

V&V Reference Report

L2 ASCDS Version : 7.6.9

Observation 61092 - L2 Version 001
Chandra X-Ray Center

L2 Processing Date : Sep 30 2006

Contents

1	Front	2
2	OBI	3
2.1	OBI	3
2.1.1	Images	3
2.1.2	Bias	3
2.1.3	Parameters	4
2.1.4	Events	4
2.2	Compared Parameters	5
2.3	Aspect	6
2.4	Star Slots	8
2.5	FID Slots	8
A	Summary	9
A.1	Status	9
A.2	Comments	9

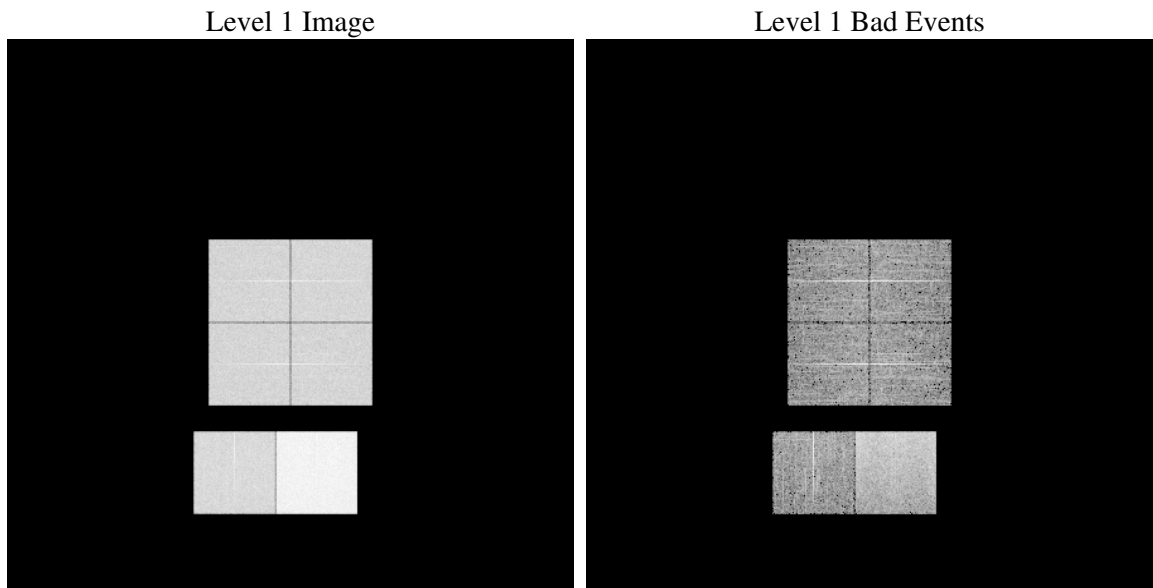
1 Front

seq_num	
obs_id	61092
title	ACIS-012367 diagnostics
observer	CHANDRA engineering request/realtime commanding
object	
dtcycle	0
cycle	P
ra_targ	0.0
dec_targ	0.0
ra_nom	349.87390030684
dec_nom	2.5118146813231
roll_nom	122.76719868766
revision	2
ontime	8387.1999687552
livetime	8280.9961925854
ontime0	3944.1649658978
ontime1	4018.3643821478
ontime2	3843.349578023
ontime3	3840.3704127371
ontime6	4187.3642329574
ontime7	8387.1999687552
l2events	1293592

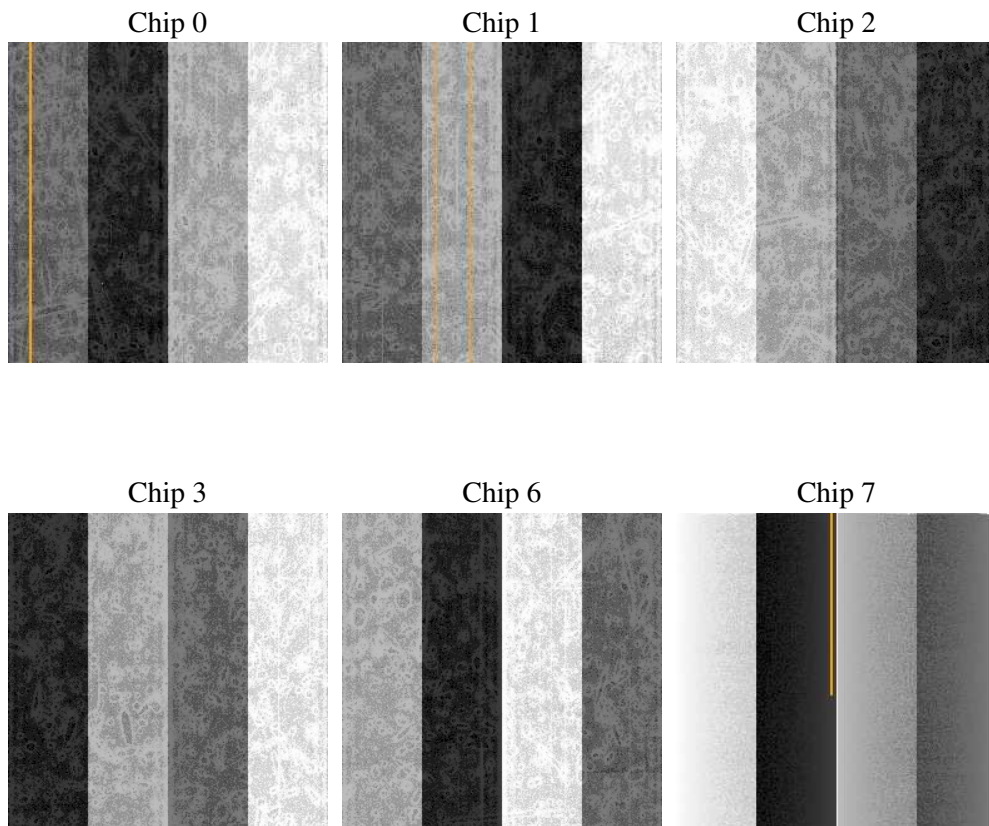
2 OBI

2.1 OBI

2.1.1 Images



2.1.2 Bias



2.1.3 Parameters

obi_num	0
ascdsver	7.6.9
caldbver	3.2.3
date	2006-09-30T16:30:43
revision	2

sched_exp_time	0.0
ontime	8465.4988383353
ontime0	3976.7454888225
ontime1	4054.5305286348
ontime2	3879.5157643855
ontime3	3873.0330455601
ontime6	4229.5446662307
ontime7	8465.4988383353
l1events	1555708

2.1.4 Events

	ccd 0	ccd 1	ccd 2	ccd 3	ccd 6	ccd 7
level 1 events	213836	218687	212968	212657	237966	459594
rejected events	27418	28143	27889	28388	30493	62200
rejected %	12%	12%	13%	13%	12%	13%

	ccd 0	ccd 1	ccd 2	ccd 3	ccd 6	ccd 7
grade 0 events	104606	105262	106134	105542	114177	70092
	48%	48%	49%	49%	47%	15%
grade 1 events	536	497	573	577	516	150
	0%	0%	0%	0%	0%	0%
grade 2 events	32289	34342	31039	31049	36286	124181
	15%	15%	14%	14%	15%	27%
grade 3 events	12006	12128	11920	11842	12824	28727
	5%	5%	5%	5%	5%	6%
grade 4 events	11879	12318	11940	12080	12869	28150
	5%	5%	5%	5%	5%	6%
grade 5 events	1853	1915	1696	1858	2114	7424
	0%	0%	0%	0%	0%	1%
grade 6 events	27218	28148	25765	25285	33401	149928
	12%	12%	12%	11%	14%	32%
grade 7 events	23449	24077	23901	24424	25779	50942
	10%	11%	11%	11%	10%	11%

2.2 Compared Parameters

Parameter	Planned	Actual	Parameter	Planned	Actual
Instrument	ACIS	ACIS	Obspar format version number	6	6
Detector	ACIS-012367	ACIS-012367	Obspar file type	PREDICTED	ACTUAL
Grating	NONE	NONE	Obspar update status	NONE	UPDATED
Data mode	FAINT	FAINT	On-chip summing requested	N	N
Observation mode	SECONDARY	SECONDARY	Subarray requested	NONE	NONE
Pointing RA	0	349.8739003068367	Alternating exposures requested	N	N
Pointing Dec	0	2.511814681323078	Primary exposure time	0.000000	3.2
Pointing Roll	0.0	122.7671986876569			
SIM focus pos (mm)	-0.782348	-0.6828225247311905			
SIM defocus (mm)	0	0.8505141146731063			
SIM translation stage pos (mm)	-233.592463	250.466033080201			
SIM translation stage offset (mm)	0	-0.01005468664627074			
Observation start time	145100195.816	145100194.79174			
Observation start date	2002-08-07T09:36:36	2002-08-07T09:36:34			
Observation end time	145122860.617	145122859.59267			
Observation end date	2002-08-07T15:54:21	2002-08-07T15:54:19			
Read mode	TIMED	TIMED			

2.3 Aspect

2.4 Star Slots

2.5 FID Slots

A Summary

A.1 Status

V&V Scientist	Jen Lauer
V&V Date (YYYY-MM-DD)	2006.10.02
V&V Edition	1
V&V Disposition and Status	OK
V&V Charge Time	8.38719996

A.2 Comments

The ACIS focal plane temperature was above calibration limits for the entire observation.