

# V&V Reference Report

## L2 ASCDS Version : 7.6.7.1

Observation 6102 - L2 Version 001  
Chandra X-Ray Center

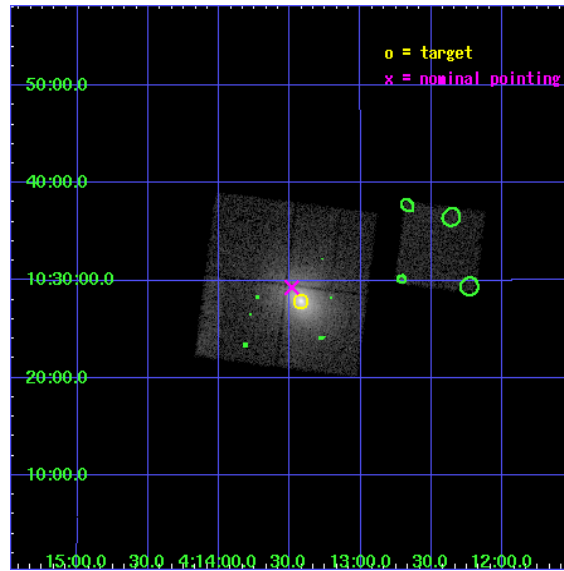
L2 Processing Date : Apr 18 2006

## Contents

<b>1</b>	<b>Front</b>	<b>2</b>
<b>2</b>	<b>OBI</b>	<b>3</b>
2.1	OBI . . . . .	3
2.1.1	Images . . . . .	3
2.1.2	Bias . . . . .	3
2.1.3	Parameters . . . . .	4
2.1.4	Events . . . . .	4
2.2	Compared Parameters . . . . .	5
2.3	Aspect . . . . .	6
2.4	Star Slots . . . . .	9
2.4.1	Slot 3 . . . . .	9
2.4.2	Slot 4 . . . . .	10
2.4.3	Slot 5 . . . . .	11
2.4.4	Slot 6 . . . . .	12
2.4.5	Slot 7 . . . . .	13
2.5	FID Slots . . . . .	14
2.5.1	Slot 0 . . . . .	14
2.5.2	Slot 1 . . . . .	15
2.5.3	Slot 2 . . . . .	16
<b>3</b>	<b>Point Sources</b>	<b>17</b>
<b>A</b>	<b>Summary</b>	<b>18</b>
A.1	Status . . . . .	18
A.2	Comments . . . . .	18

# 1 Front

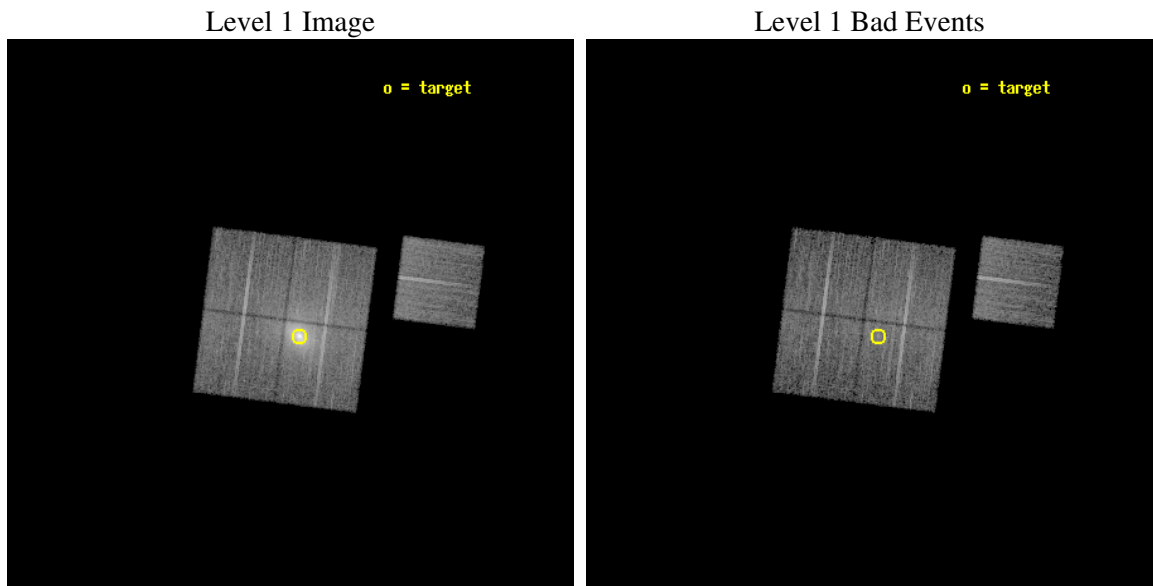
seq_num	800550
obs_id	6102
title	Probing dark energy using the X-ray gas mass fraction in dynamically relaxed galaxy clusters
observer	Dr Steven Allen
object	Abell 478
dtcycle	0
cycle	P
ra_targ	63.355417
dec_targ	10.465194
ra_nom	63.371390158097
dec_nom	10.488206343622
roll_nom	97.256606028187
revision	2
ontime	10127.699980527
livetime	9995.3741243773
ontime0	10127.699980527
ontime1	10127.699980527
ontime2	10127.699980527
ontime3	10127.699980527
ontime6	10124.559020281
l2events	106417



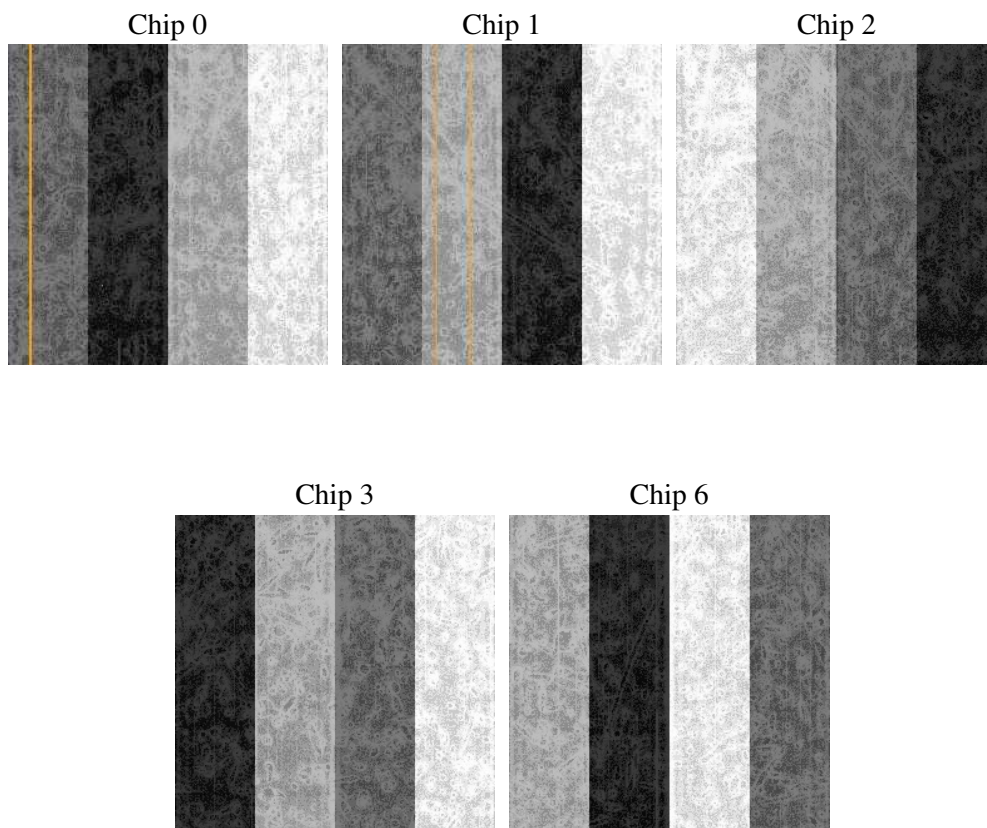
## 2 OBI

### 2.1 OBI

#### 2.1.1 Images



#### 2.1.2 Bias



### 2.1.3 Parameters

obi_num	0
ascdsver	7.6.7.1
caldbver	3.2.1
date	2006-04-18T16:55:20
revision	2

sched_exp_time	10000.000000
ontime	10506.654729277
ontime0	10506.654729277
ontime1	10506.654729277
ontime2	10506.654729277
ontime3	10506.654729277
ontime6	10503.513769031
l1events	480633

### 2.1.4 Events

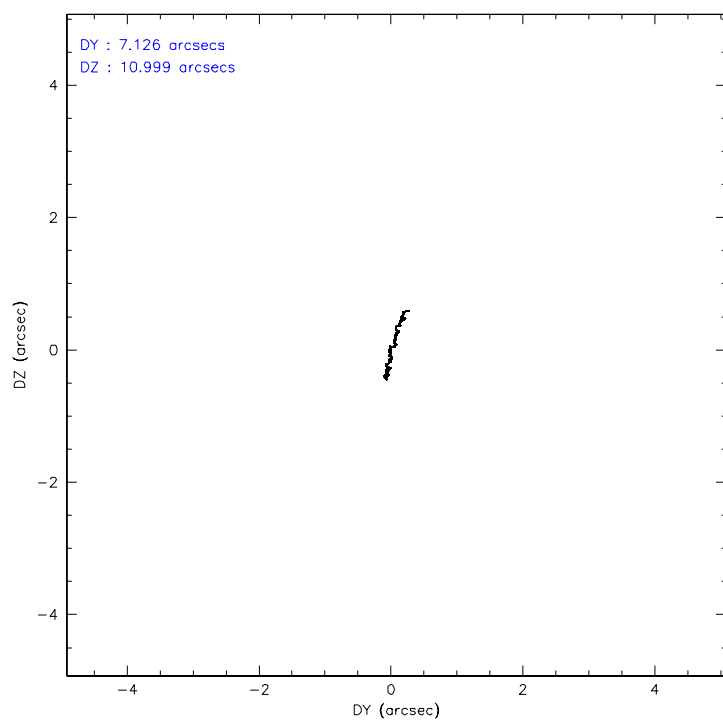
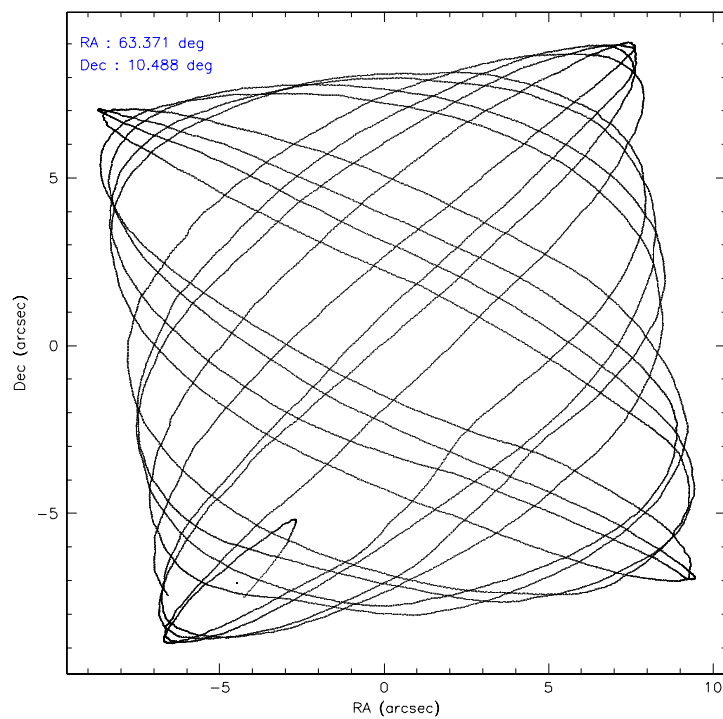
	ccd 0	ccd 1	ccd 2	ccd 3	ccd 6
level 1 events	78355	81050	96090	140273	84865
rejected events	66299	65523	78260	75654	75512
rejected %	84%	80%	81%	53%	88%

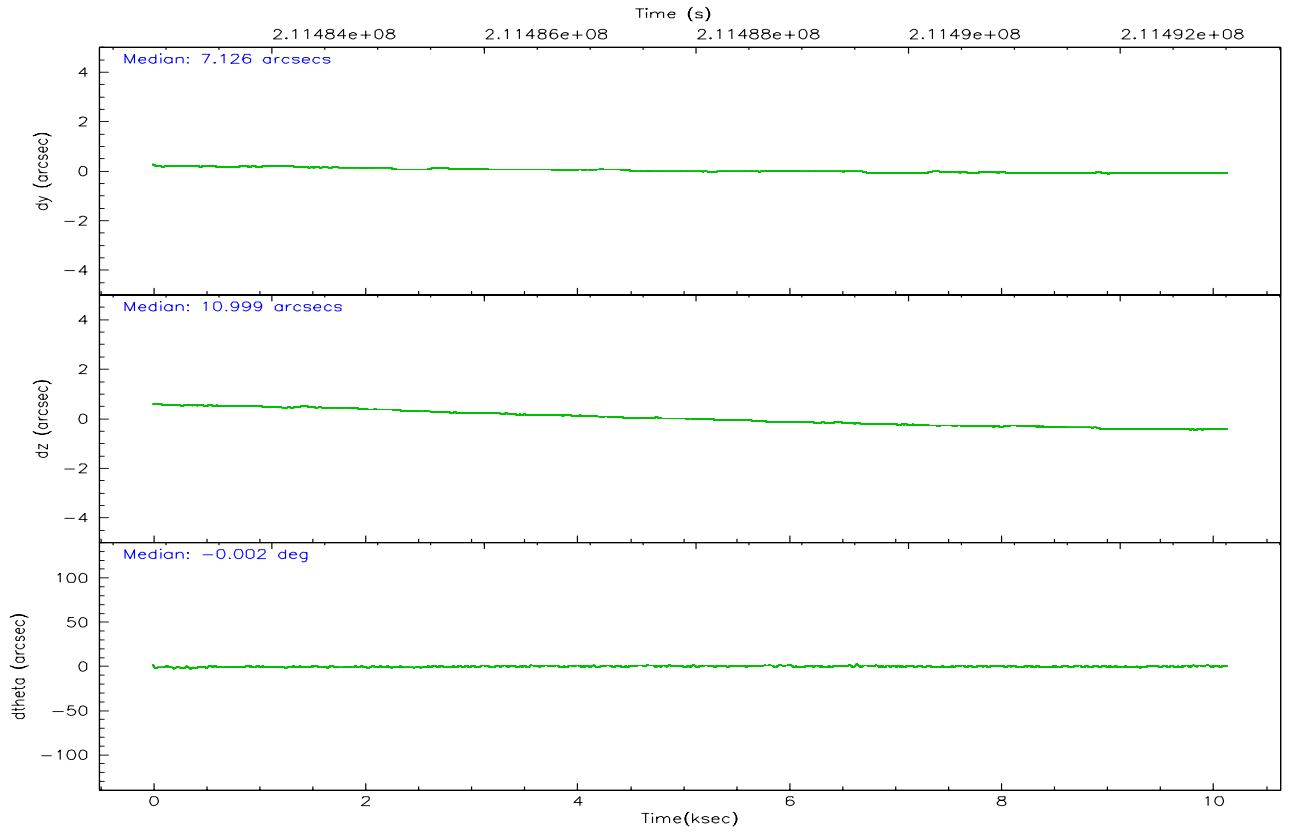
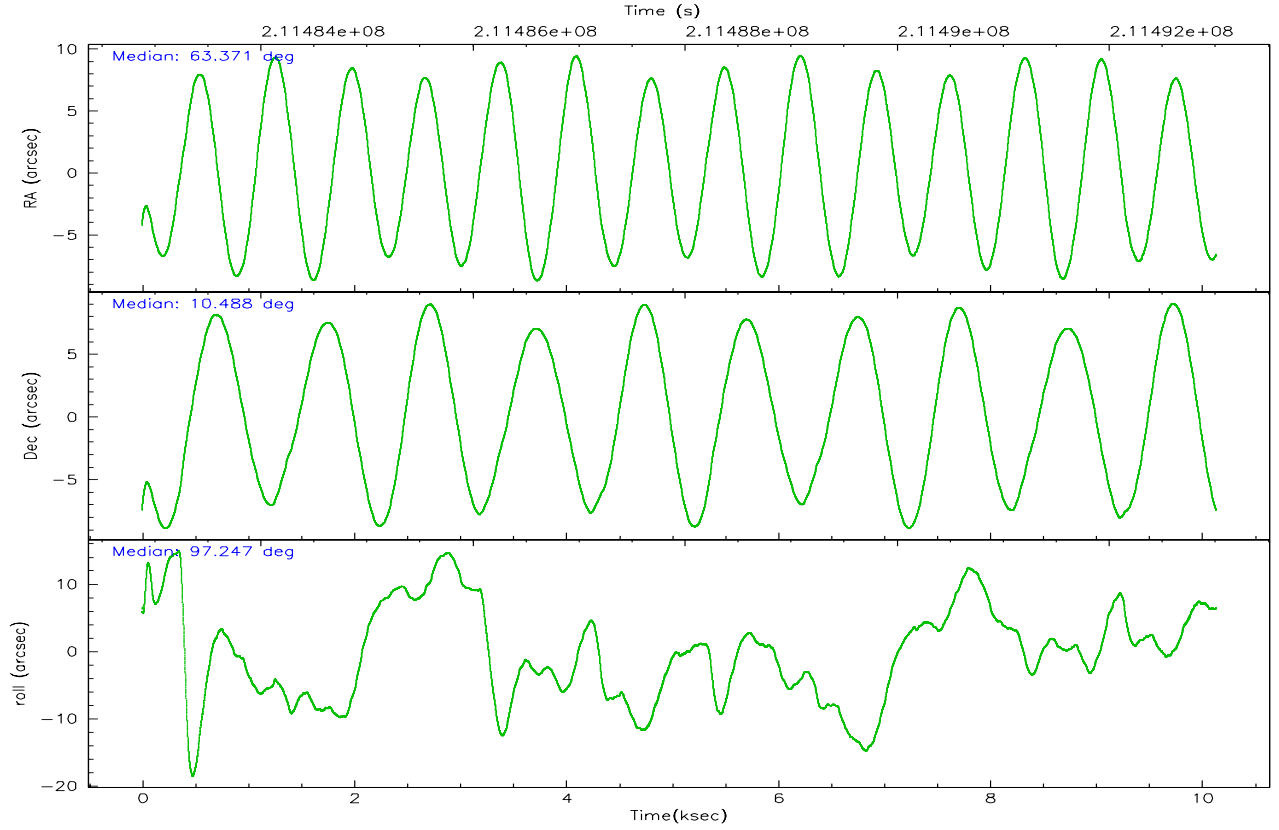
	ccd 0	ccd 1	ccd 2	ccd 3	ccd 6
grade 0 events	6599	8644	11188	49961	4376
	8%	10%	11%	35%	5%
grade 1 events	82	62	96	403	34
	0%	0%	0%	0%	0%
grade 2 events	2492	3062	3039	7702	2177
	3%	3%	3%	5%	2%
grade 3 events	969	1171	1081	2709	826
	1%	1%	1%	1%	0%
grade 4 events	895	1063	1443	2667	798
	1%	1%	1%	1%	0%
grade 5 events	2447	2673	2322	2895	2707
	3%	3%	2%	2%	3%
grade 6 events	1469	2058	1581	2967	1494
	1%	2%	1%	2%	1%
grade 7 events	63402	62317	75340	70969	72453
	80%	76%	78%	50%	85%

## 2.2 Compared Parameters

Parameter	Planned	Actual	Parameter	Planned	Actual
Instrument	ACIS	ACIS	Obspar format version number	6	6
Detector	ACIS-01236	ACIS-01236	Obspar file type	PREDICTED	ACTUAL
Grating	NONE	NONE	Obspar update status	NONE	UPDATED
Data mode	VFAINT	VFAINT	On-chip summing requested	N	N
Observation mode	POINTING	POINTING	Subarray requested	NONE	NONE
Pointing RA	63.388379	63.37139015809664	Alternating exposures requested	N	N
Pointing Dec	10.466520	10.48820634362152	Primary exposure time	0.000000	3.1
Pointing Roll	97.044840	97.25660602818678			
SIM focus pos (mm)	-0.782348	-0.7809083437167272			
SIM defocus (mm)	0	0.001439871863259334			
SIM translation stage pos (mm)	-233.592463	-233.5874344608287			
SIM translation stage offset (mm)	0	-0.005018542100998502			
Observation start time	211483008.184000	211481851.87601			
Observation start date	2004-09-13T17:15:44	2004-09-13T16:57:31			
Observation end time	211493008.184000	211493998.12656			
Observation end date	2004-09-13T20:02:24	2004-09-13T20:19:58			
Read mode	TIMED	TIMED			

## 2.3 Aspect





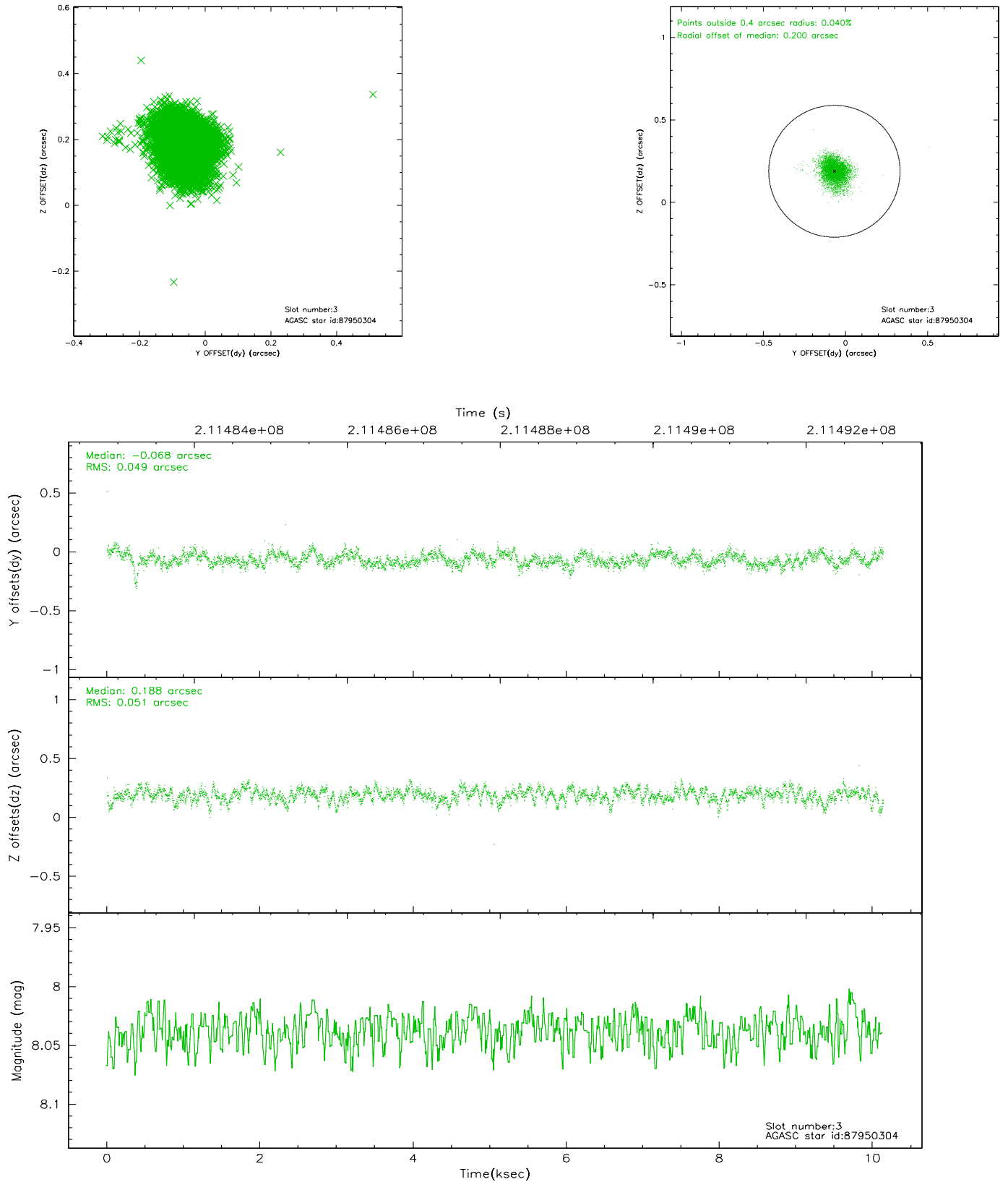
### Slot Statistics

slot	status	id	mag	n_pts	med_dy	med_dz	dr1	dr2	ra	dec	mean_y	mean_z
0	FID	ACIS-I-2	7.14	2473	-0.061	-0.070	0.014	0.023	0.000000	0.000000	-761.71	-840.96
1	FID	ACIS-I-4	7.18	2473	0.088	0.059	0.009	0.015	0.000000	0.000000	2152.26	1065.08
2	FID	ACIS-I-5	7.22	2473	-0.128	0.080	0.010	0.016	0.000000	0.000000	-1814.94	1063.55
3	GUIDE	87950304	8.04	4946	-0.068	0.188	0.074	0.123	63.753878	10.748130	848.69	-1407.13
4	GUIDE	87953912	6.67	4946	0.086	-0.107	0.095	0.156	63.394036	10.212467	-909.79	91.53
5	GUIDE	87954016	9.26	4945	0.157	-0.064	0.087	0.141	63.197646	10.607026	584.83	607.61
6	GUIDE	87955152	7.69	4868	-0.214	0.035	0.070	0.116	63.504124	11.027236	1953.46	-653.13
7	BAD	87955344	10.62	4704	0.022	-0.047	0.175	0.295	63.321713	10.049181	-1461.51	418.33

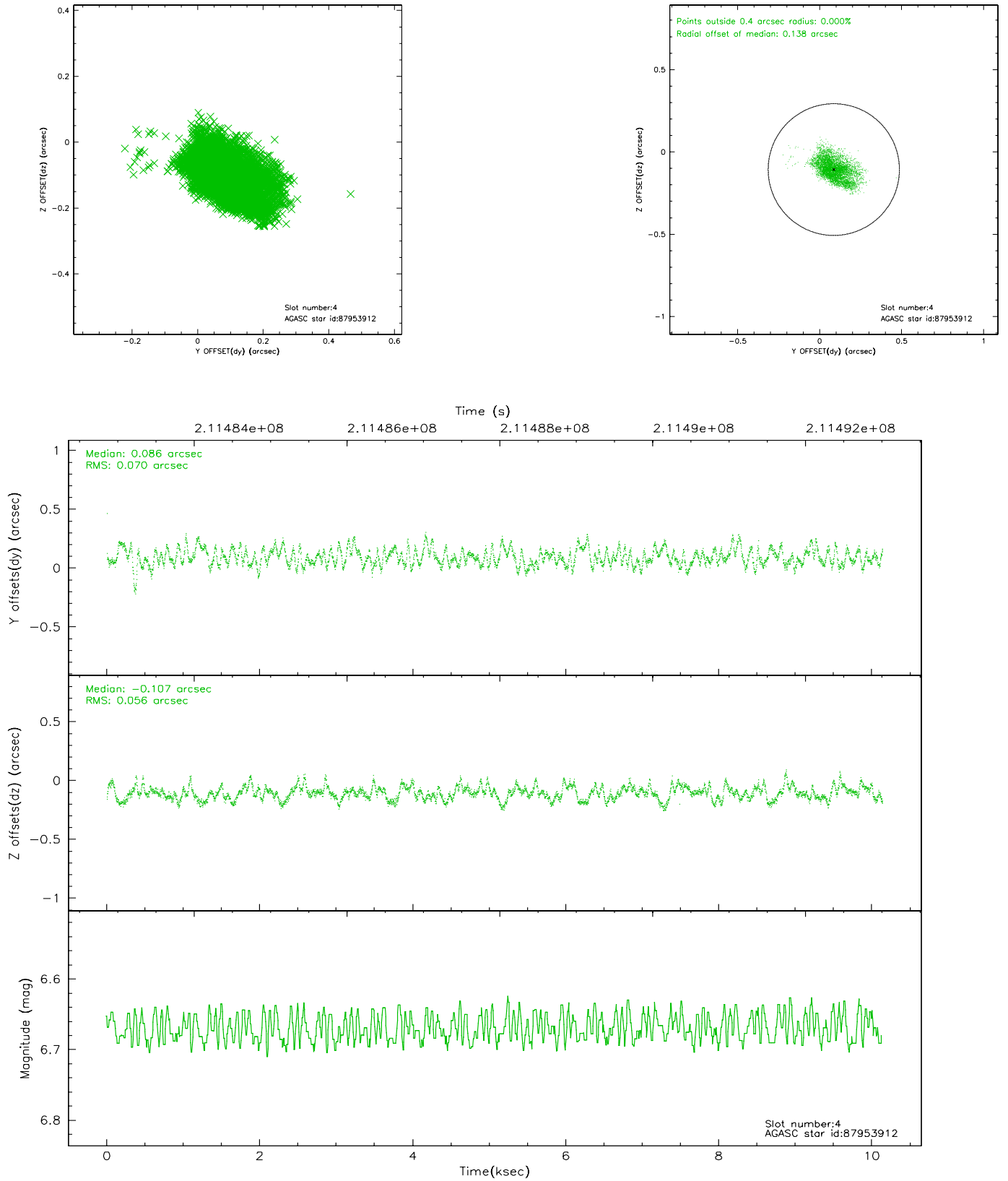


## 2.4 Star Slots

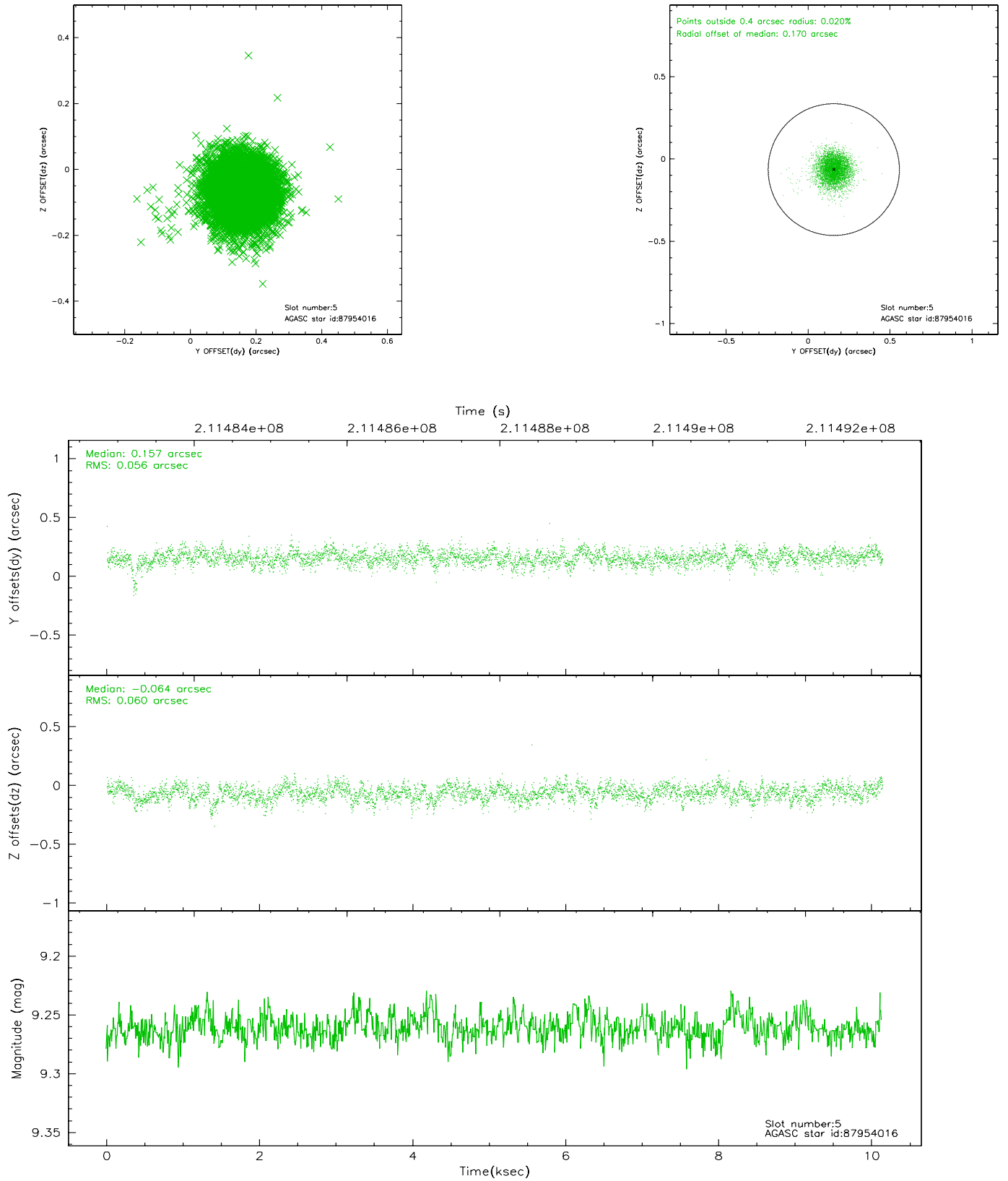
### 2.4.1 Slot 3



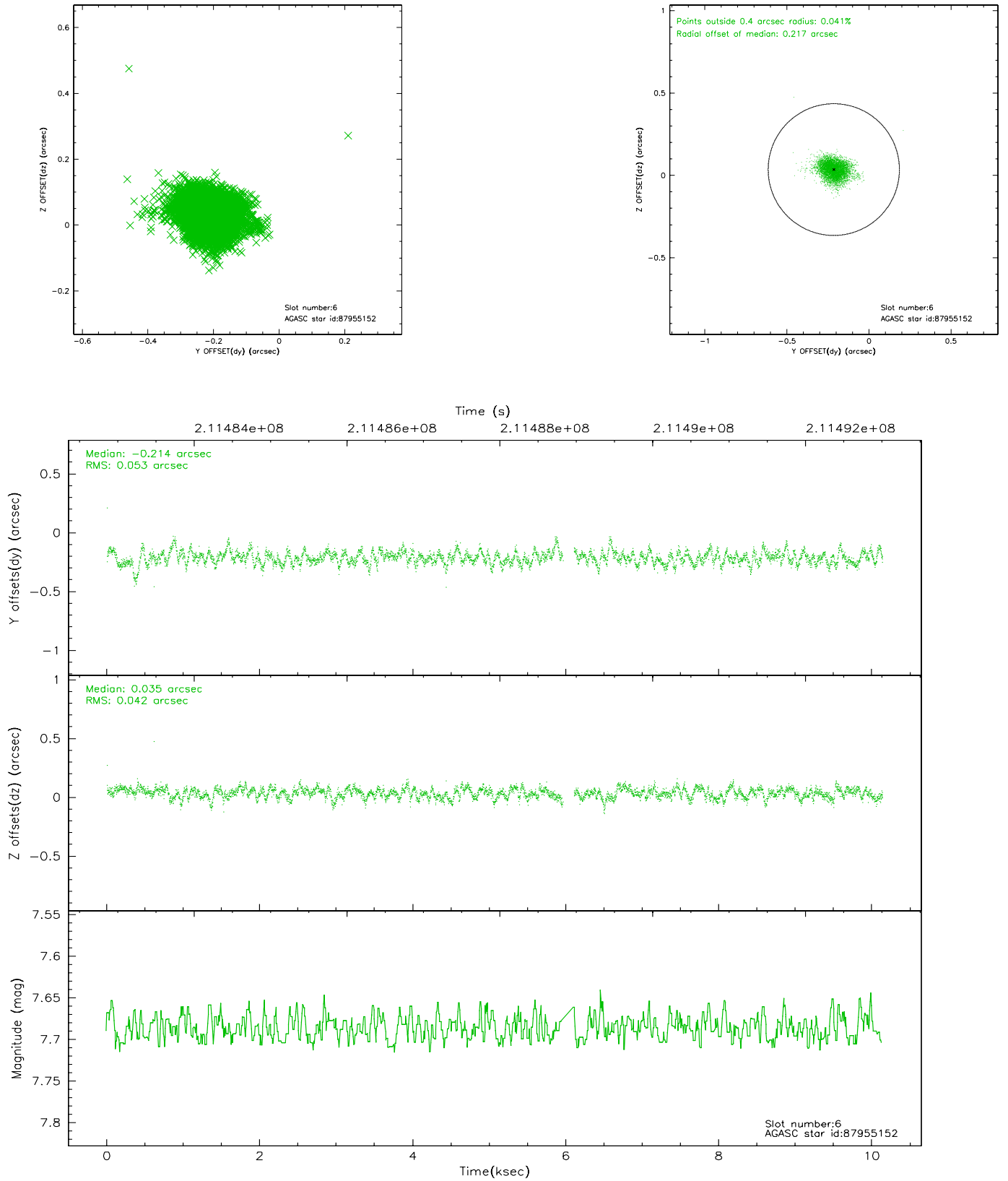
## 2.4.2 Slot 4



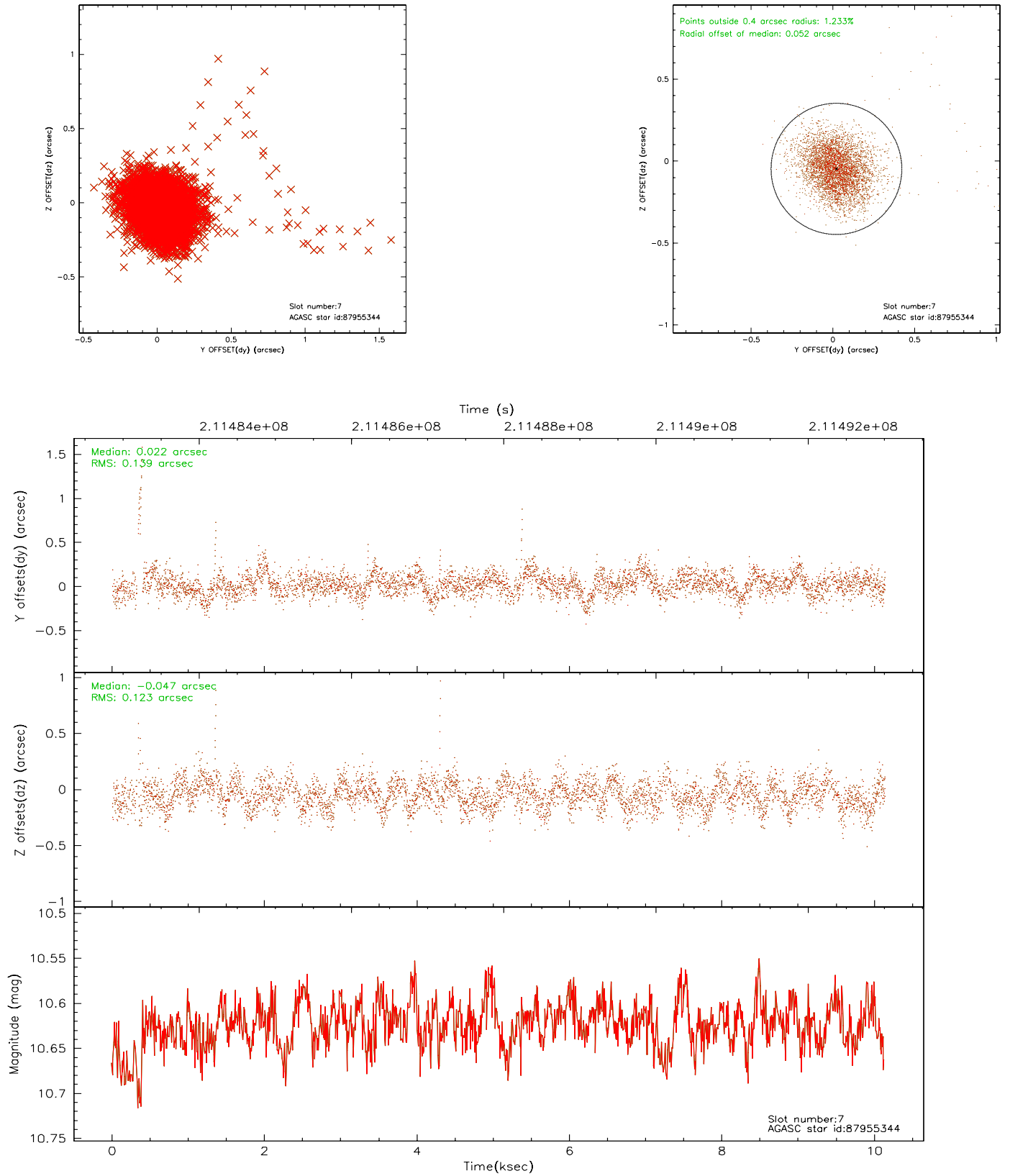
### 2.4.3 Slot 5



## 2.4.4 Slot 6

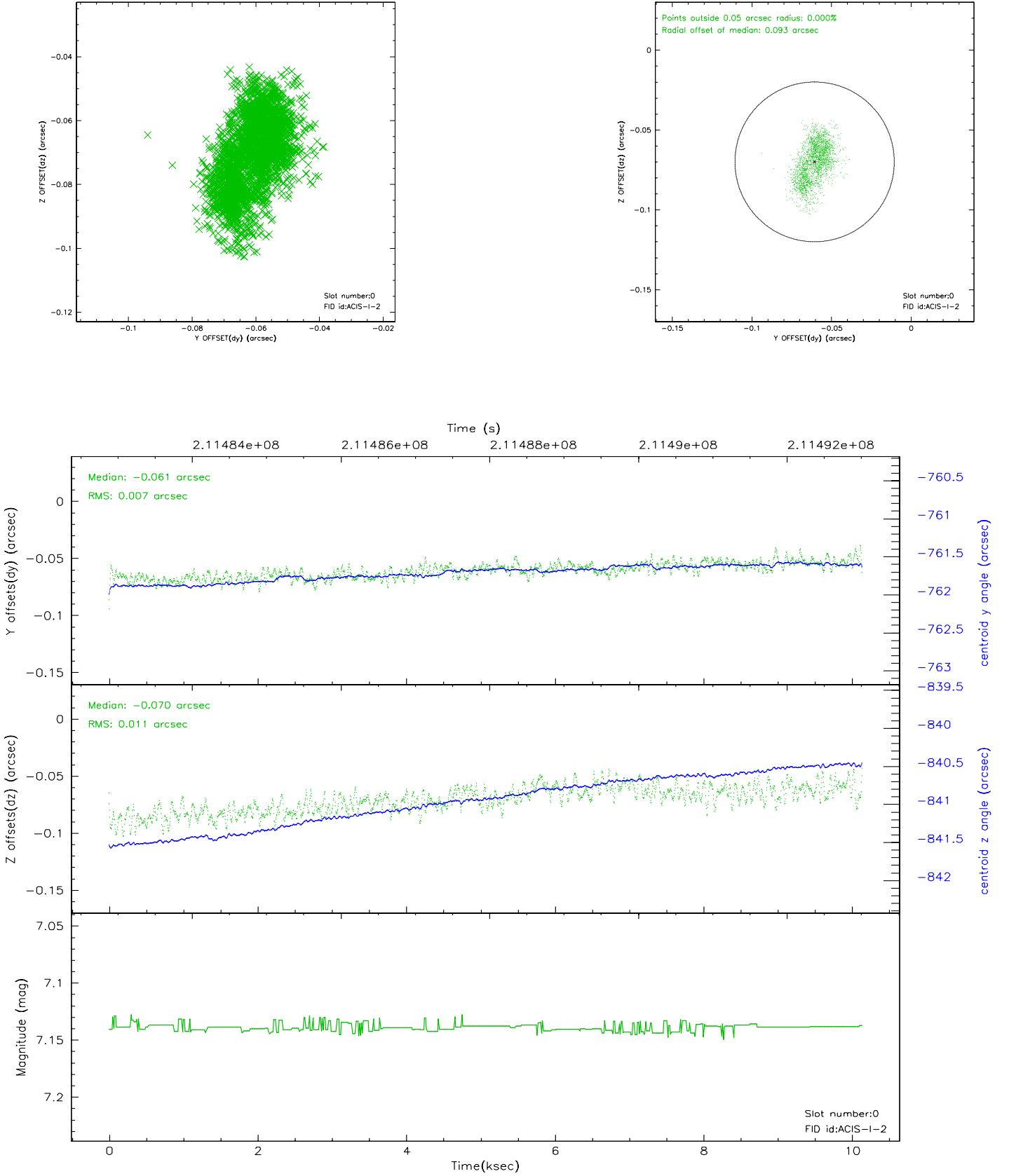


## 2.4.5 Slot 7

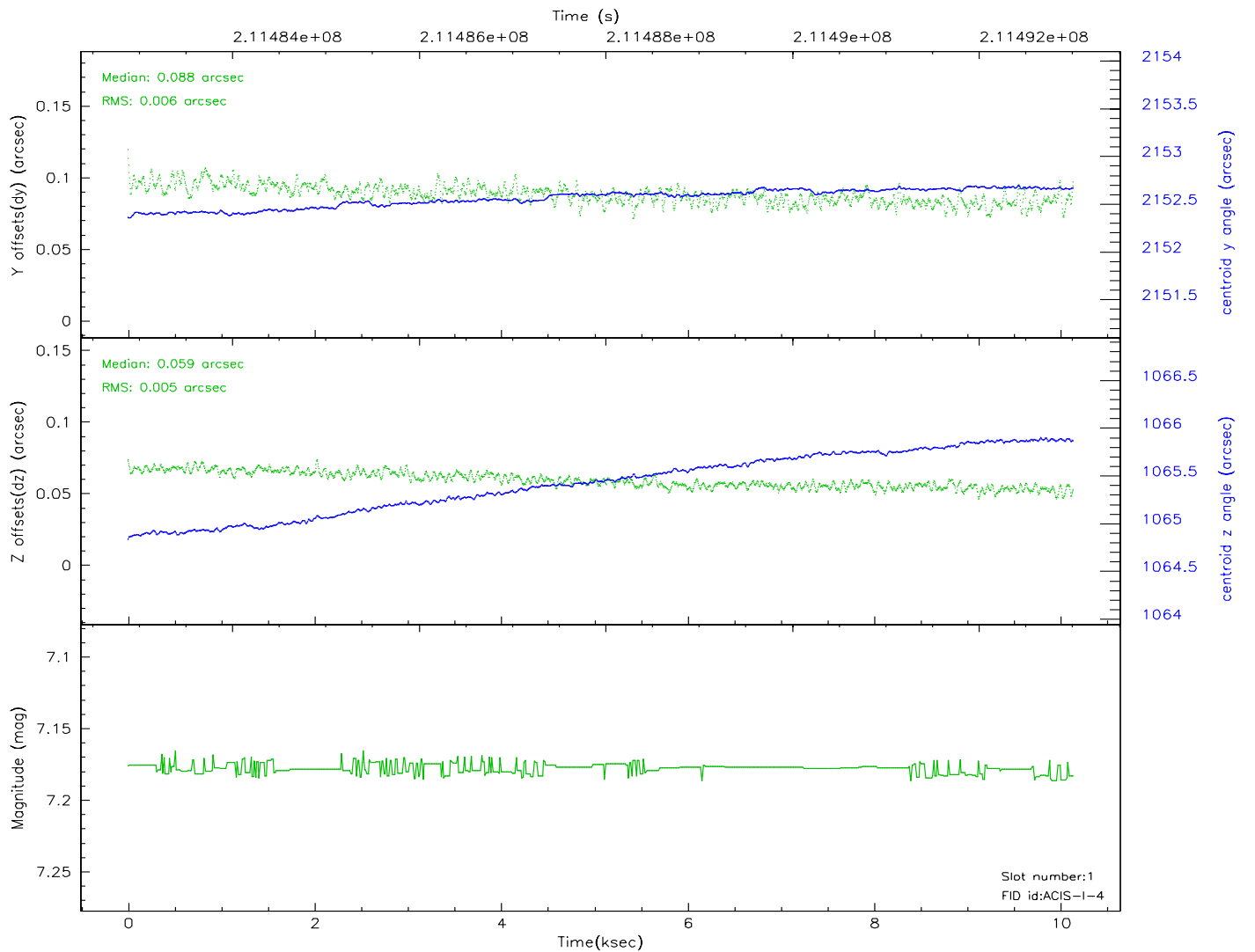
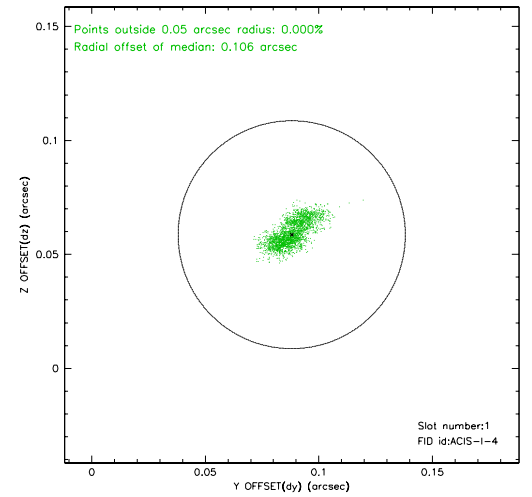
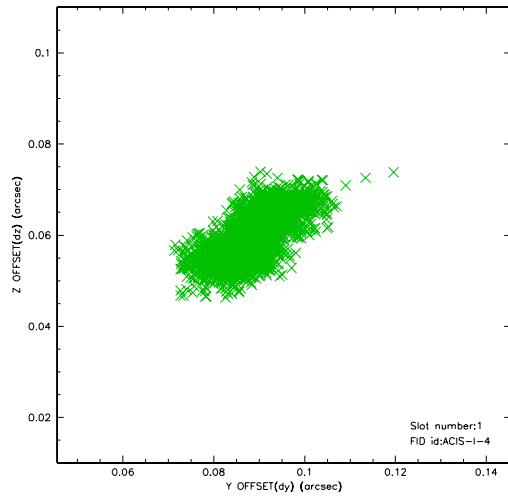


## 2.5 FID Slots

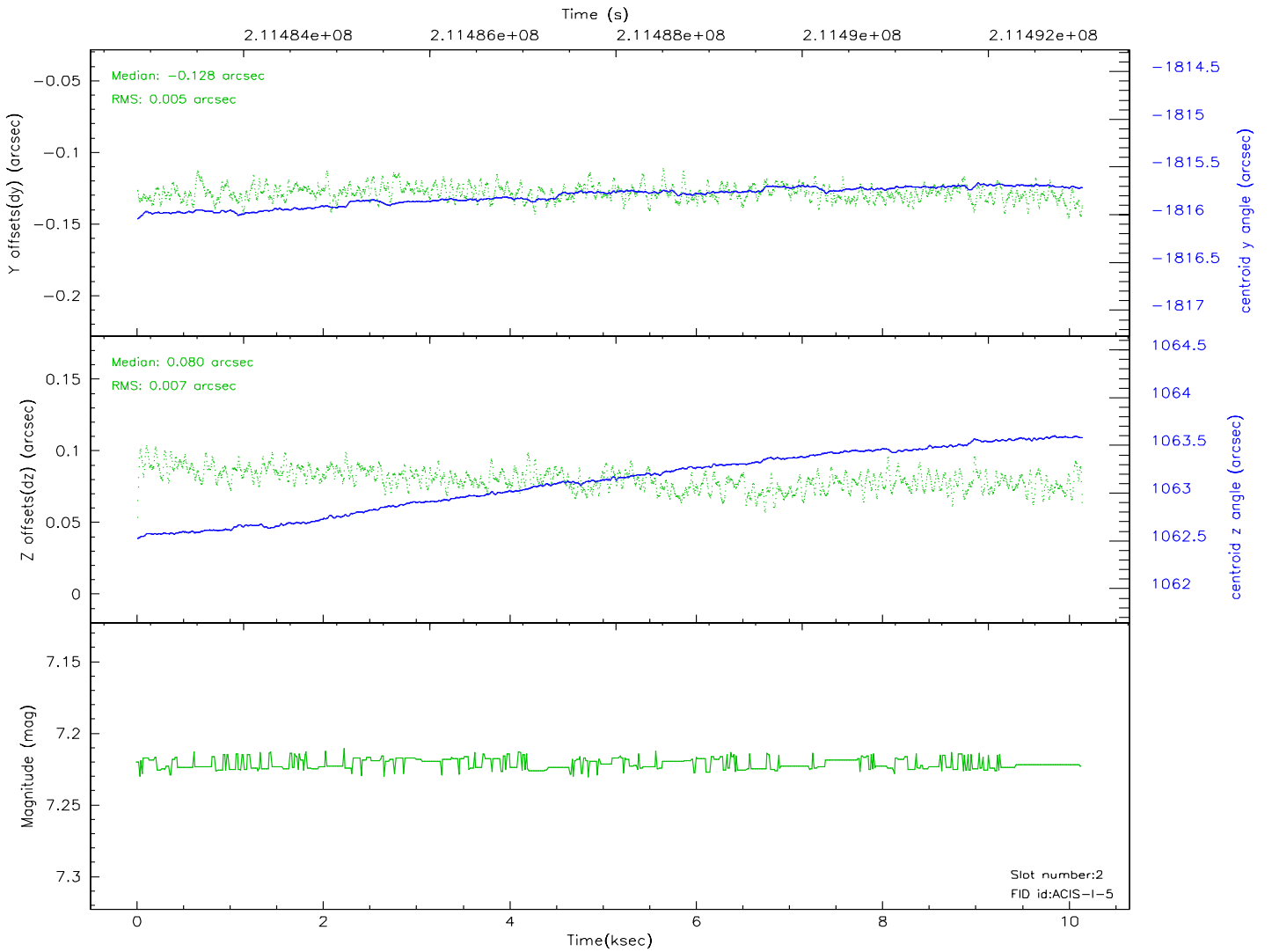
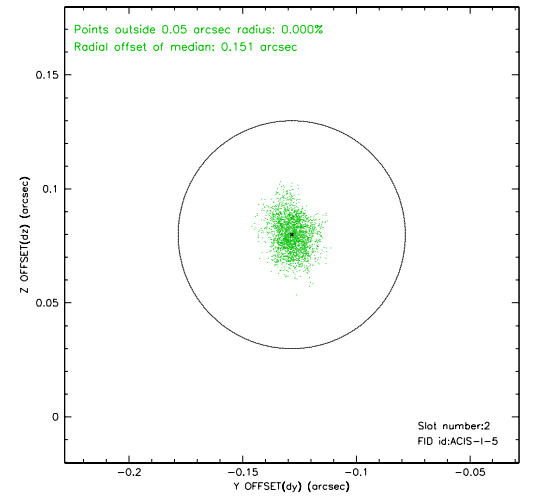
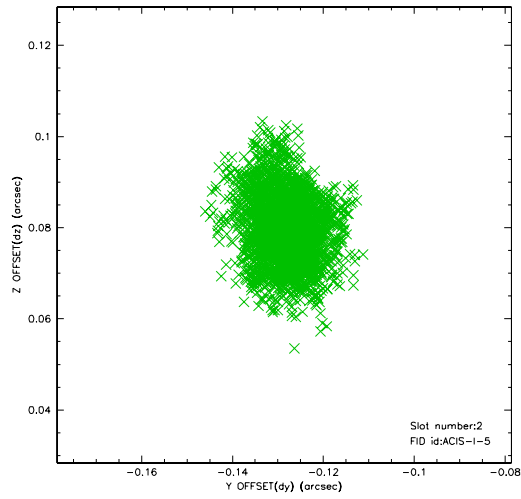
### 2.5.1 Slot 0



## 2.5.2 Slot 1

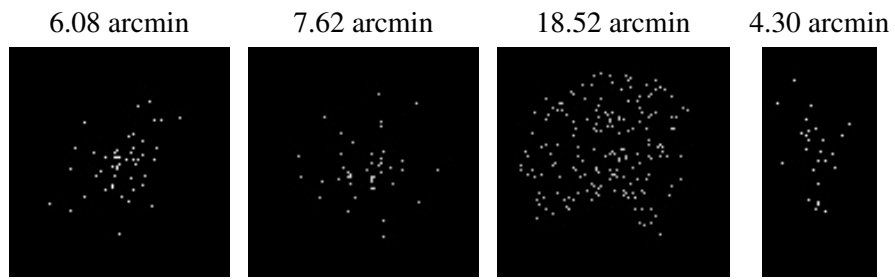


### 2.5.3 Slot 2





### 3 Point Sources



## A Summary

### A.1 Status

V&V Scientist	Jen Lauer
V&V Date (YYYY-MM-DD)	2006.04.18
V&V Edition	1
V&V Disposition and Status	OK
V&V Charge Time	10.127

### A.2 Comments