

# V&V Reference Report

## L2 ASCDS Version : 7.6.8

Observation 60852 - L2 Version 001  
Chandra X-Ray Center

L2 Processing Date : Jul 21 2006

## Contents

<b>1</b>	<b>Front</b>	<b>2</b>
<b>2</b>	<b>OBI</b>	<b>3</b>
2.1	OBI . . . . .	3
2.1.1	Images . . . . .	3
2.1.2	Bias . . . . .	3
2.1.3	Parameters . . . . .	4
2.1.4	Events . . . . .	4
2.2	Compared Parameters . . . . .	5
2.3	Aspect . . . . .	6
2.4	Star Slots . . . . .	8
2.5	FID Slots . . . . .	8
<b>A</b>	<b>Summary</b>	<b>9</b>
A.1	Status . . . . .	9
A.2	Comments . . . . .	9

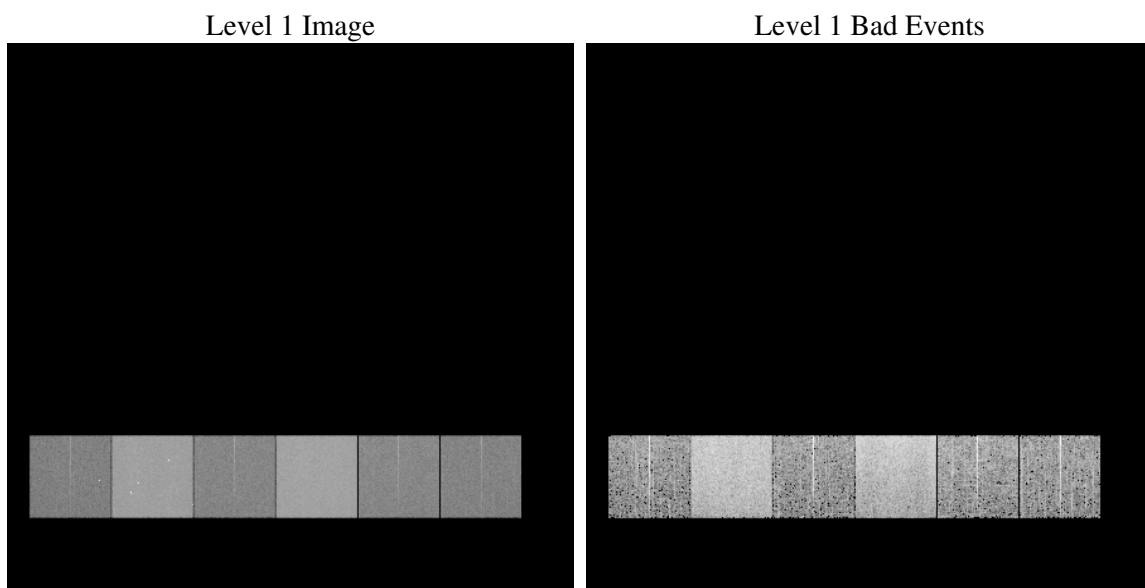
# 1 Front

seq_num	&#160
obs_id	60852
title	ACIS-456789 diagnostics
observer	CHANDRA engineering request/realtime commanding
object	&#160
dtcycle	0
cycle	P
ra_targ	0.0
dec_targ	0.0
ra_nom	120.69765342818
dec_nom	33.571477222673
roll_nom	233.18513362267
revision	2
ontime	7788.1992725432
livetime	7689.5804038637
ontime4	3179.6365506351
ontime5	7788.2403125465
ontime6	3468.0465173423
ontime7	7788.1992725432
ontime8	3578.3231802881
ontime9	3331.8009715676
l2events	1150027

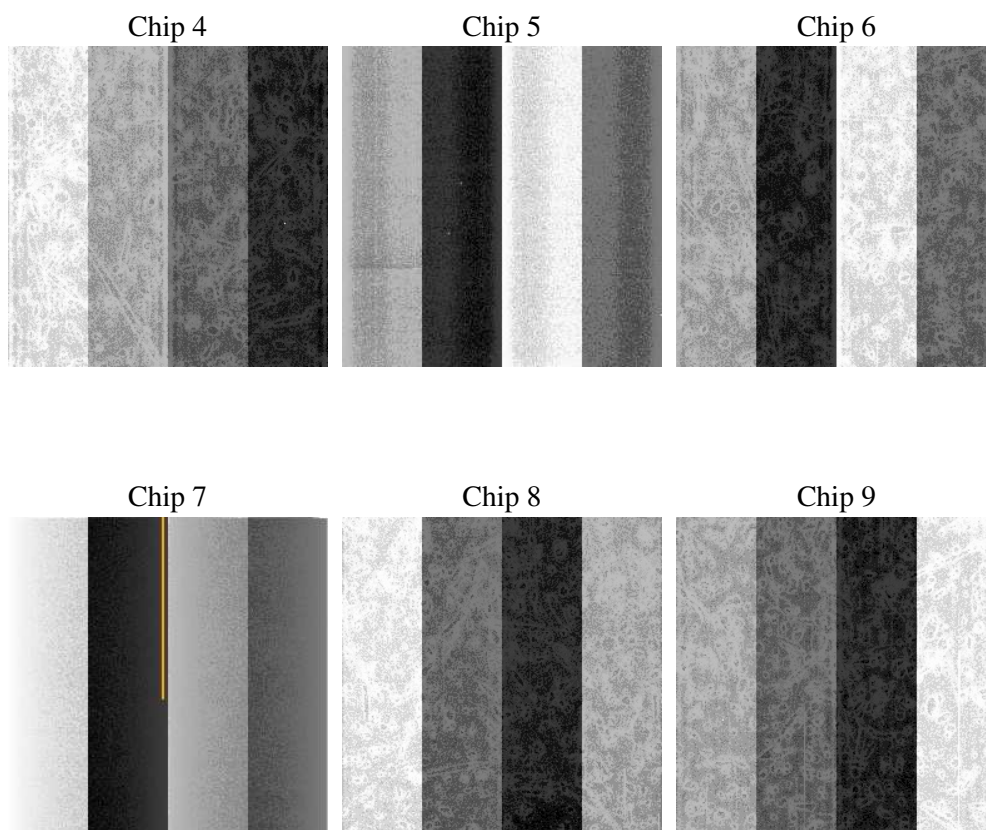
## 2 OBI

### 2.1 OBI

#### 2.1.1 Images



#### 2.1.2 Bias



### 2.1.3 Parameters

obi_num	0
ascdsver	7.6.8
caldsver	3.2.2
date	2006-07-21T04:25:12
revision	2

sched_exp_time	0.0
ontime	7791.3817170858
ontime4	3182.6958751678
ontime5	7791.3817170858
ontime6	3471.1468818784
ontime7	7791.3817170858
ontime8	3581.3414648473
ontime9	3335.0244561136
l1events	1422624

### 2.1.4 Events

	ccd 4	ccd 5	ccd 6	ccd 7	ccd 8	ccd 9
level 1 events	152857	355839	176978	386192	185713	165045
rejected events	23792	60790	25070	54409	28004	25387
rejected %	15%	17%	14%	14%	15%	15%

	ccd 4	ccd 5	ccd 6	ccd 7	ccd 8	ccd 9
grade 0 events	75807	37014	83350	60487	87643	77443
	49%	10%	47%	15%	47%	46%
grade 1 events	544	119	403	131	460	463
	0%	0%	0%	0%	0%	0%
grade 2 events	20296	139719	26320	100485	27339	24027
	13%	39%	14%	26%	14%	14%
grade 3 events	8517	9841	9471	24543	10069	8919
	5%	2%	5%	6%	5%	5%
grade 4 events	8429	9866	9248	24488	10014	8779
	5%	2%	5%	6%	5%	5%
grade 5 events	1534	6581	1827	7097	2045	1782
	1%	1%	1%	1%	1%	1%
grade 6 events	16134	98720	23673	121935	22778	20616
	10%	27%	13%	31%	12%	12%
grade 7 events	21596	53979	22686	47026	25365	23016
	14%	15%	12%	12%	13%	13%

## 2.2 Compared Parameters

Parameter	Planned	Actual	Parameter	Planned	Actual
Instrument	ACIS	ACIS	Obspar format version number	6	6
Detector	ACIS-456789	ACIS-456789	Obspar file type	PREDICTED	ACTUAL
Grating	NONE	NONE	Obspar update status	NONE	UPDATED
Data mode	FAINT	FAINT	On-chip summing requested	N	N
Observation mode	SECONDARY	SECONDARY	Subarray requested	NONE	NONE
Pointing RA	0	120.6976534281752	Alternating exposures requested	N	N
Pointing Dec	0	33.57147722267295	Primary exposure time	0.000000	3.2
Pointing Roll	0.0	233.1851336226679			
SIM focus pos (mm)	-0.684267	-0.6828225247311905			
SIM defocus (mm)	0	0.8505141146731063			
SIM translation stage pos (mm)	-190.132523	250.4635187648994			
SIM translation stage offset (mm)	0	-0.007540371344731511			
Observation start time	161285253.989418	161285252.96468			
Observation start date	2003-02-10T17:27:34	2003-02-10T17:27:32			
Observation end time	161314081.09063	161314080.0659			
Observation end date	2003-02-11T01:28:01	2003-02-11T01:28:00			
Read mode	TIMED	TIMED			

## 2.3 Aspect



## **2.4 Star Slots**

## **2.5 FID Slots**



## A Summary

### A.1 Status

V&V Scientist	Jen Lauer
V&V Date (YYYY-MM-DD)	2006.07.21
V&V Edition	1
V&V Disposition and Status	OK
V&V Charge Time	7.78819927

### A.2 Comments