

# V&V Reference Report

## L2 ASCDS Version : 8.5.1

Observation 6072 - L2 Version 4  
Chandra X-Ray Center

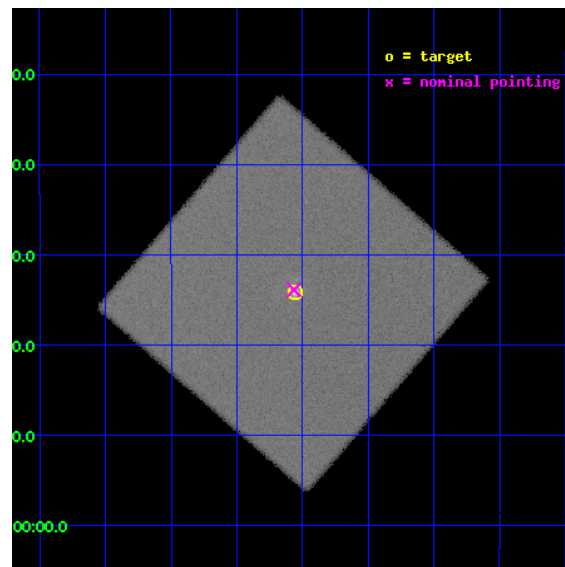
L2 Processing Date : Dec 18 2012

## Contents

<b>1</b>	<b>Front</b>	<b>2</b>
<b>2</b>	<b>OBI</b>	<b>3</b>
2.1	OBI . . . . .	3
2.1.1	Images . . . . .	3
2.1.2	Parameters . . . . .	4
2.1.3	Events . . . . .	4
2.2	Compared Parameters . . . . .	5
2.3	Aspect . . . . .	6
2.4	Star Slots . . . . .	9
2.4.1	Slot 3 . . . . .	9
2.4.2	Slot 4 . . . . .	10
2.4.3	Slot 5 . . . . .	11
2.4.4	Slot 6 . . . . .	12
2.4.5	Slot 7 . . . . .	13
2.5	FID Slots . . . . .	14
2.5.1	Slot 0 . . . . .	14
2.5.2	Slot 1 . . . . .	15
2.5.3	Slot 2 . . . . .	16
<b>A</b>	<b>Summary</b>	<b>17</b>
A.1	Status . . . . .	17
A.2	Comments . . . . .	17

# 1 Front

seq_num	590399	Sequence number
obs_id	6072	Observation id
title	AO6A Observations of the Standard Candles Cas A and G21.5-09	Propo
observer	Dr. CXC Calibration	Principal investigator
object	G21.5-09	Source name
ra_targ	278.389583	Observer's specified target RA [deg]
dec_targ	-10.568528	Observer's specified target Dec [deg]
ra_nom	278.3914748527	Nominal RA [deg]
dec_nom	-10.564890016219	Nominal Dec [deg]
roll_nom	85.947672978015	Nominal Roll [deg]
revision	4	Processing version of data
ontime	19150.075867206	[s]
livetime	19020.067820252	Ontime multiplied by DTCOR
l2events	691606	Number of level 2 events

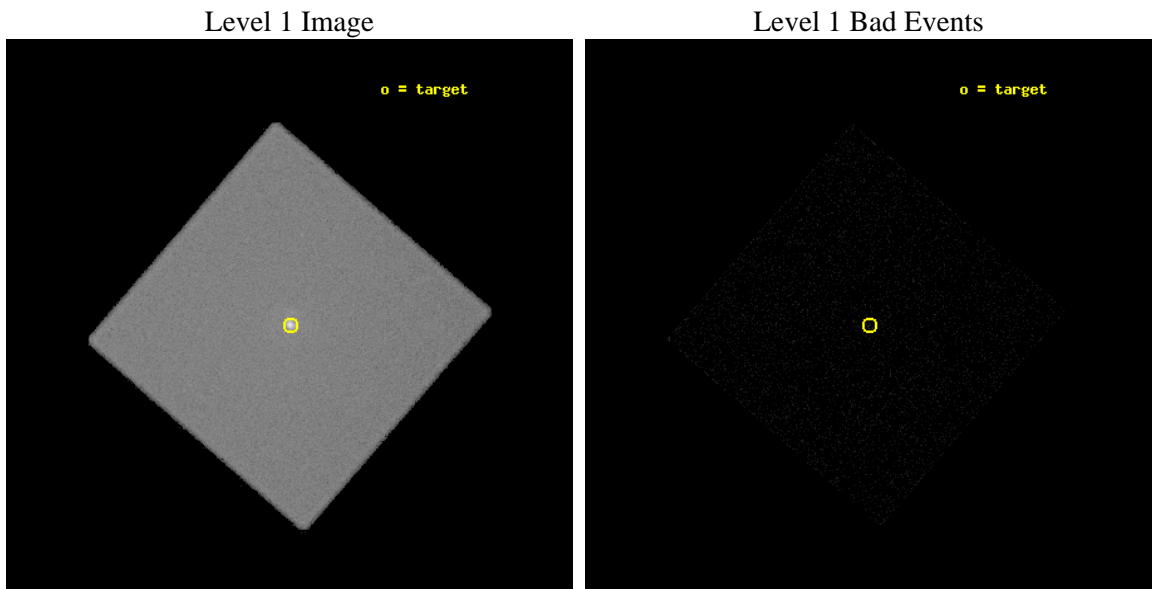




## 2 OBI

### 2.1 OBI

#### 2.1.1 Images



### 2.1.2 Parameters

obi_num	0	Obi number	sched_exp_time	19000.000000	[s] Scheduled observation exposure time
ascdsver	8.5.1	Processing system revision	ontime	19150.075867206	[s]
caldbver	4.5.5	&#160	l1events	1058473	Number of level 1 events
date	2012-12-17T19:28:15	Date and time of file creation			
revision	4	Processing version of data			

### 2.1.3 Events

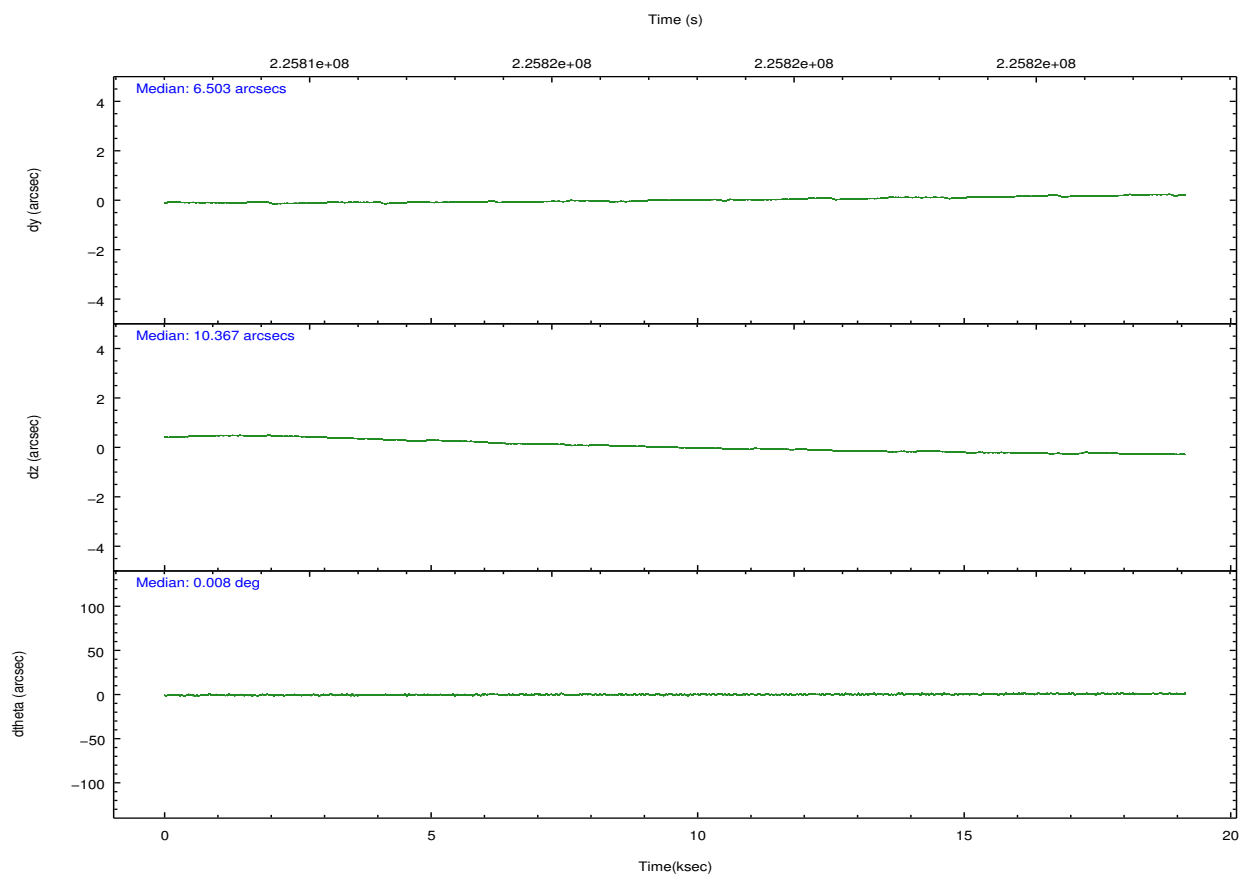
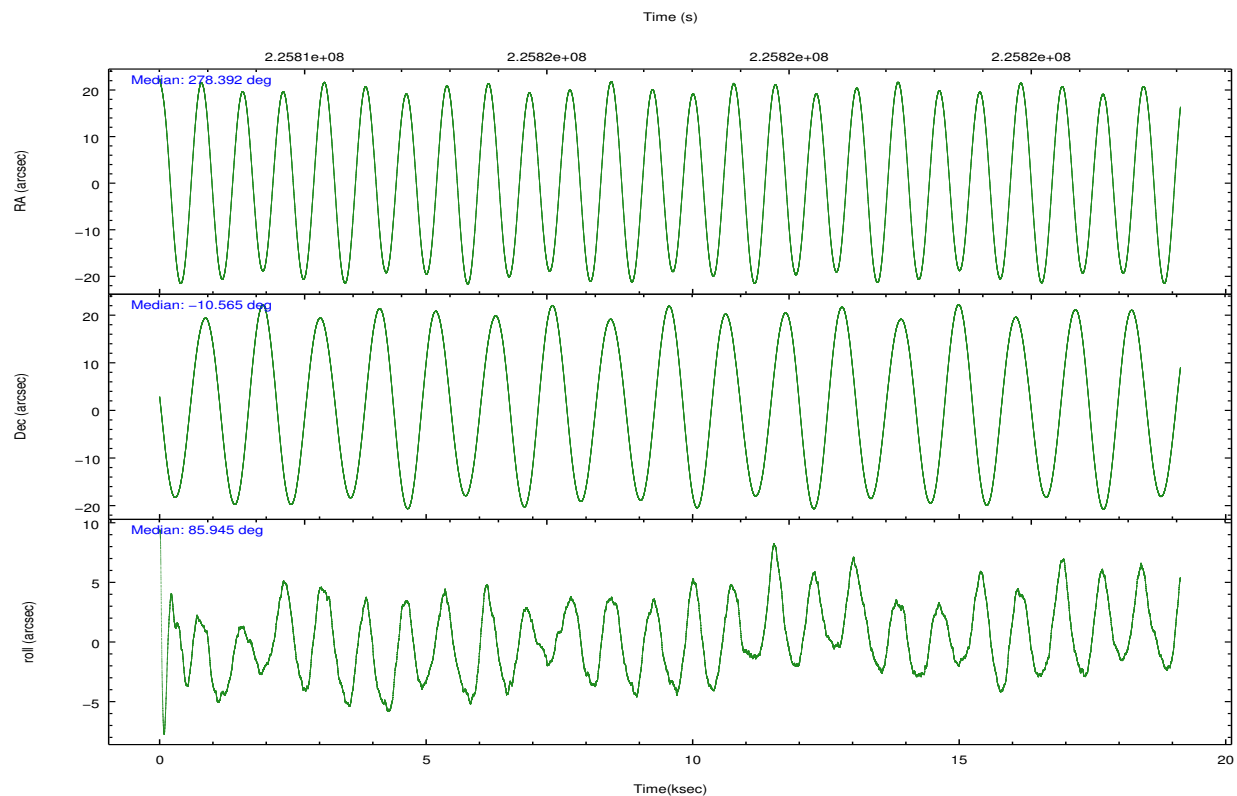
#### Level 1 Events

	<b>segment 0</b>
level 1 events	1058473
rejected events	28564
rejected %	2%

## 2.2 Compared Parameters

Parameter	Planned	Actual	Parameter	Planned	Actual
Instrument	HRC	HRC	Obspar format version number	7	7
Detector	HRC-I	HRC-I	Obspar file type	PREDICTED	ACTUAL
Grating	NONE	NONE	Obspar update status	NONE	UPDATED
Data mode	OBSERVING	OBSERVING			
Observation mode	POINTING	POINTING			
[deg] Pointing RA	278.404125	278.3914748526987			
[deg] Pointing Dec	-10.588897	-10.56489001621875			
[deg] Pointing Roll	86.045488	85.94767297801502			
[s] Window start time (MET)	225331264.184000	225331264.184000			
[s] Window stop time (MET)	228614464.184000	228614464.184000			
[mm] SIM focus pos	-1.040293	-1.038866356238299			
[mm] SIM defocus	0	0.001426264420575141			
[mm] SIM translation stage pos	126.985494	126.9829799899862			
[mm] SIM translation stage offset	0	0.002508901615314585			
[s] Observation start time (MET)	225808119.184000	225807718.38259			
Observation start date	2005-02-26T12:27:35	2005-02-26T12:21:58			
[s] Observation end time (MET)	225827119.184000	225827614.65849			
Observation end date	2005-02-26T17:44:15	2005-02-26T17:53:34			

## 2.3 Aspect

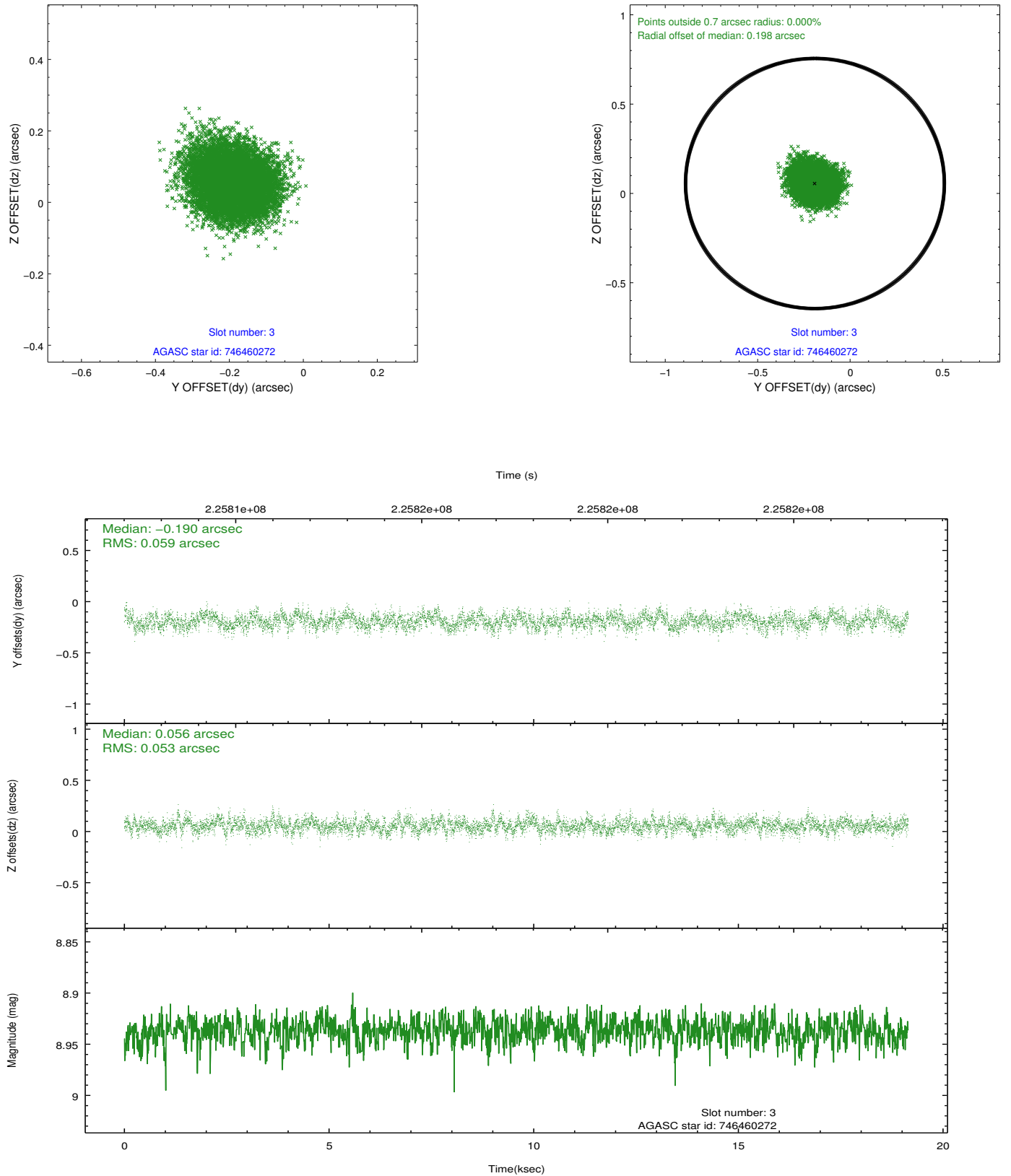


### Slot Statistics

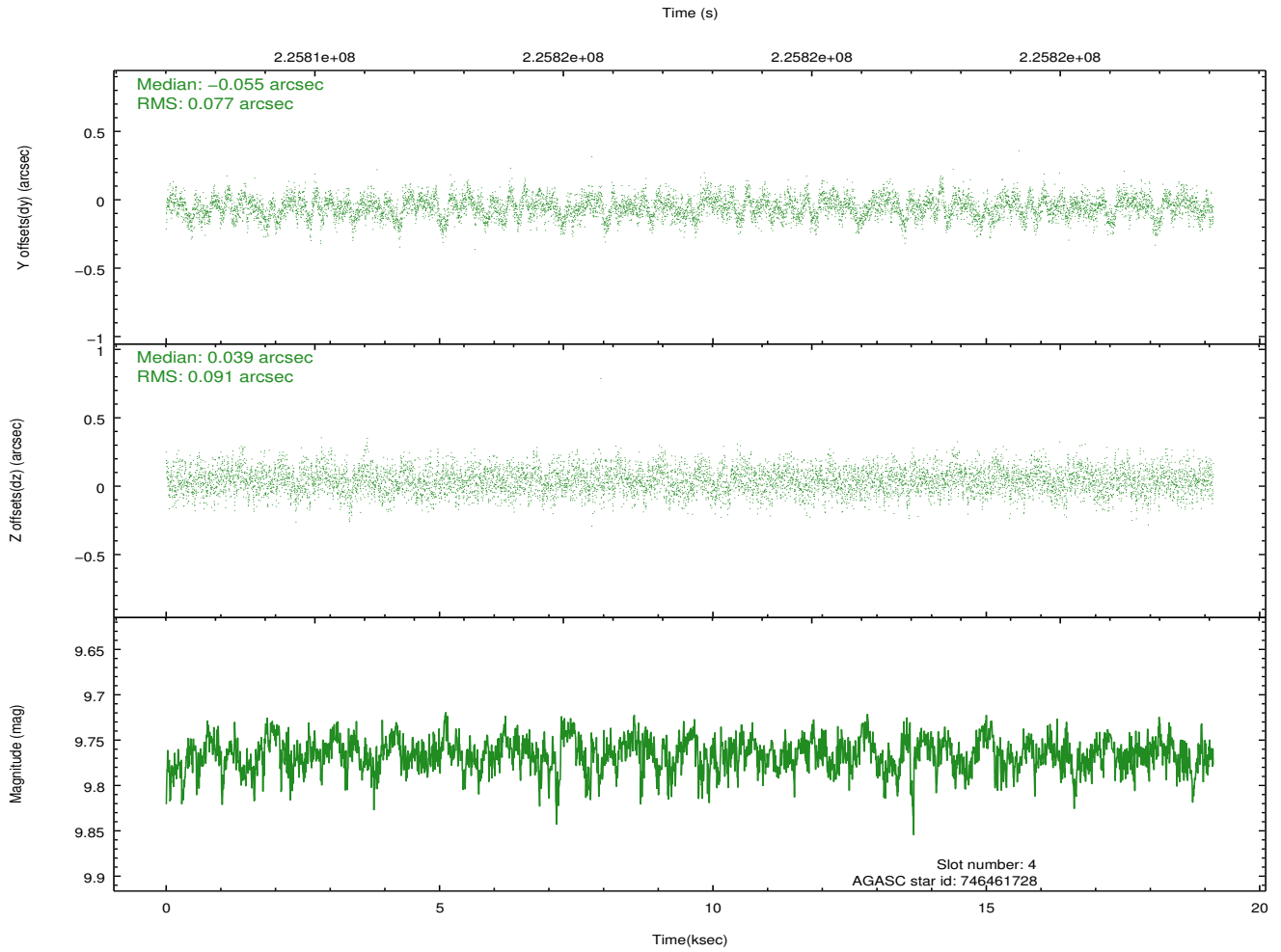
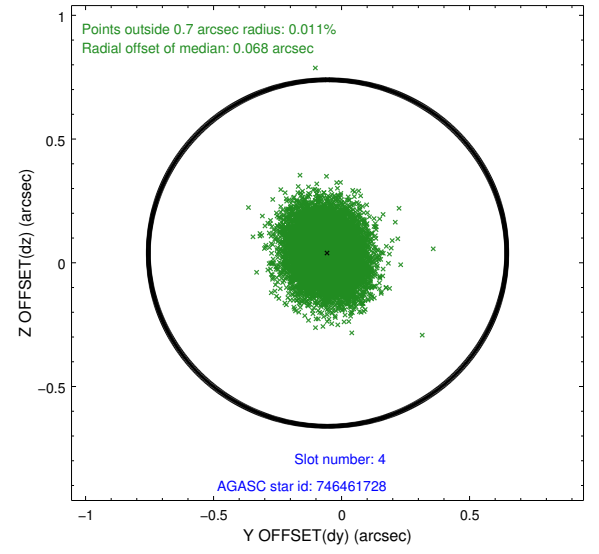
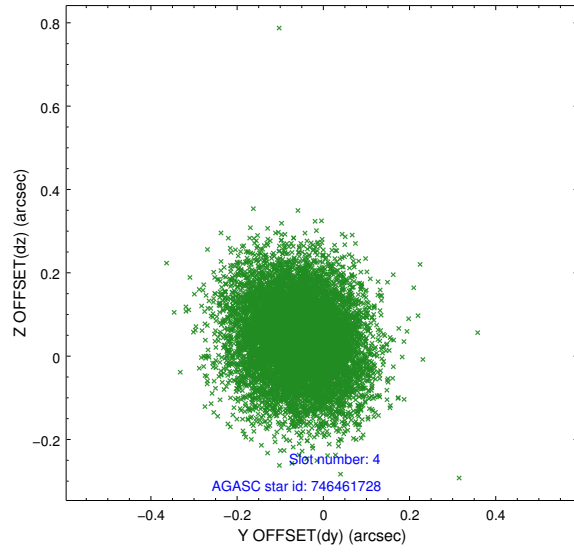
slot	status	id	mag	n_pts	med_dy	med_dz	dr1	dr2	ra	dec	mean_y	mean_z
0	FID	HRC-I-1	7.02	4671	-0.009	0.005	0.012	0.021	0.000000	0.000000	-762.07	-1298.37
1	FID	HRC-I-2	7.06	4671	0.101	-0.052	0.007	0.011	0.000000	0.000000	850.50	-1300.25
2	FID	HRC-I-3	7.10	4671	0.027	-0.043	0.010	0.020	0.000000	0.000000	-1190.38	1005.86
3	GUIDE	746460272	8.94	9336	-0.190	0.056	0.085	0.135	278.847488	-10.152127	1676.68	-1458.72
4	GUIDE	746461728	9.77	9306	-0.055	0.039	0.127	0.206	278.986921	-10.530755	350.33	-2043.38
5	GUIDE	746462392	8.54	9339	0.085	0.042	0.092	0.144	279.038421	-10.890715	-931.48	-2312.86
6	GUIDE	746462456	8.38	9341	0.019	-0.119	0.070	0.113	278.652171	-10.530173	271.27	-861.63
7	GUIDE	746462680	9.02	9315	0.145	-0.015	0.081	0.134	278.660755	-10.782756	-632.91	-953.50

## 2.4 Star Slots

### 2.4.1 Slot 3

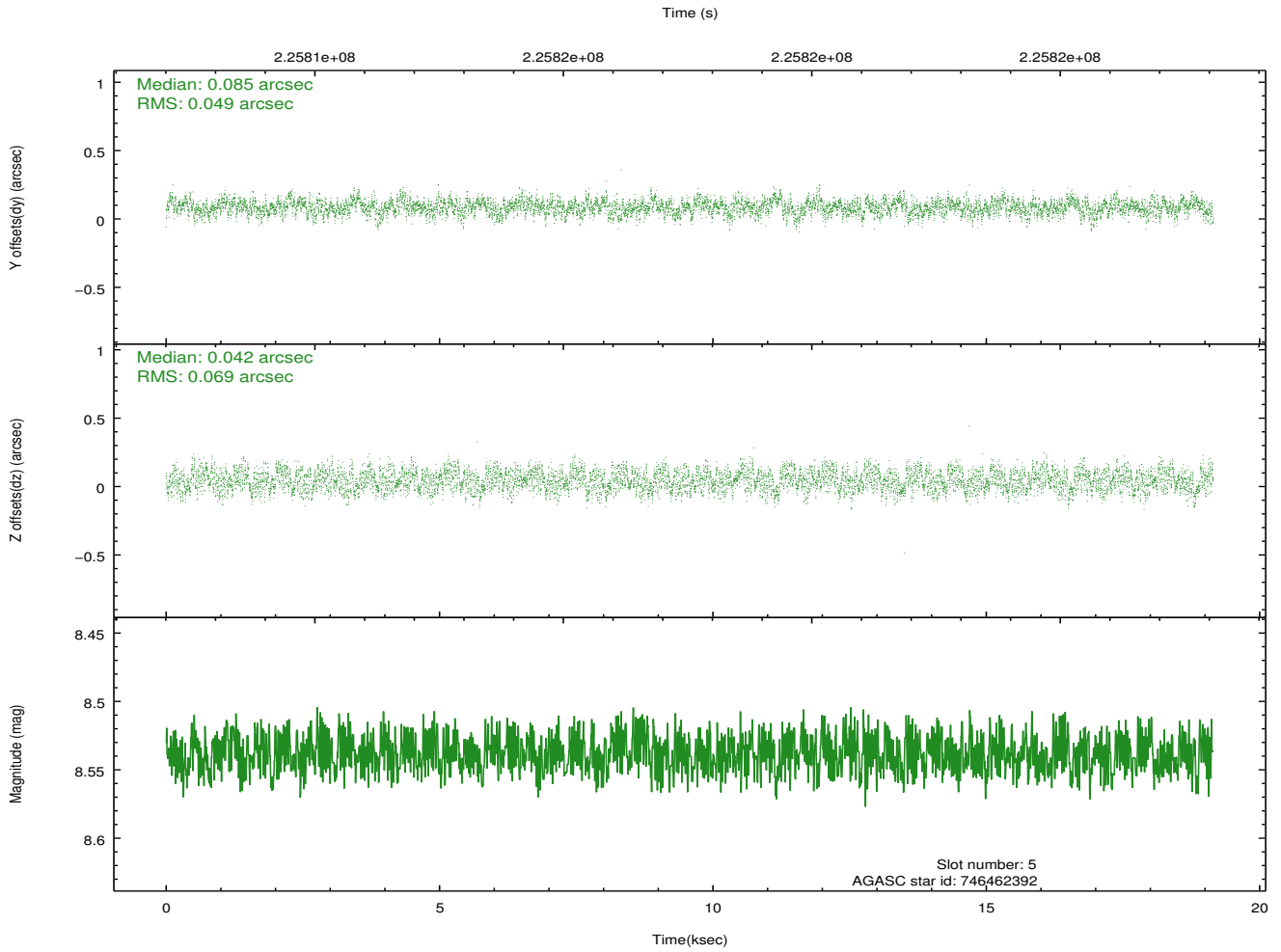
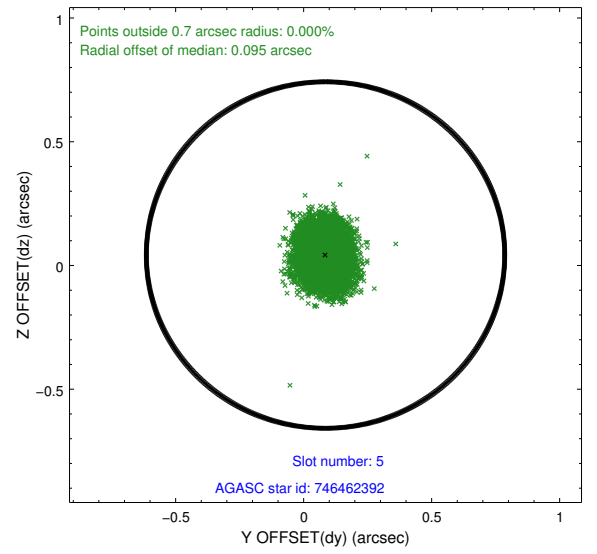
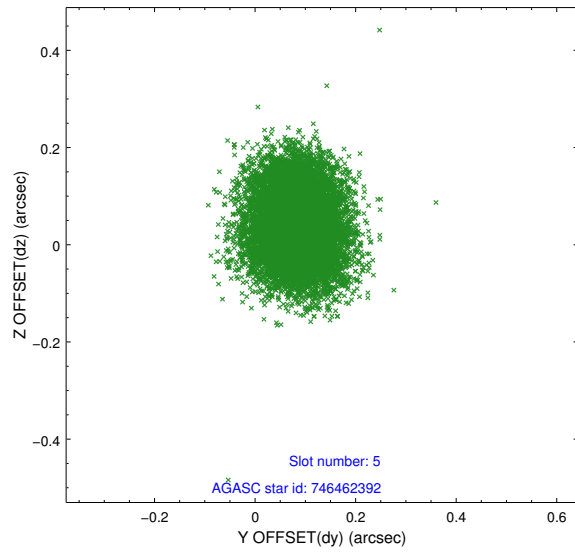


## 2.4.2 Slot 4

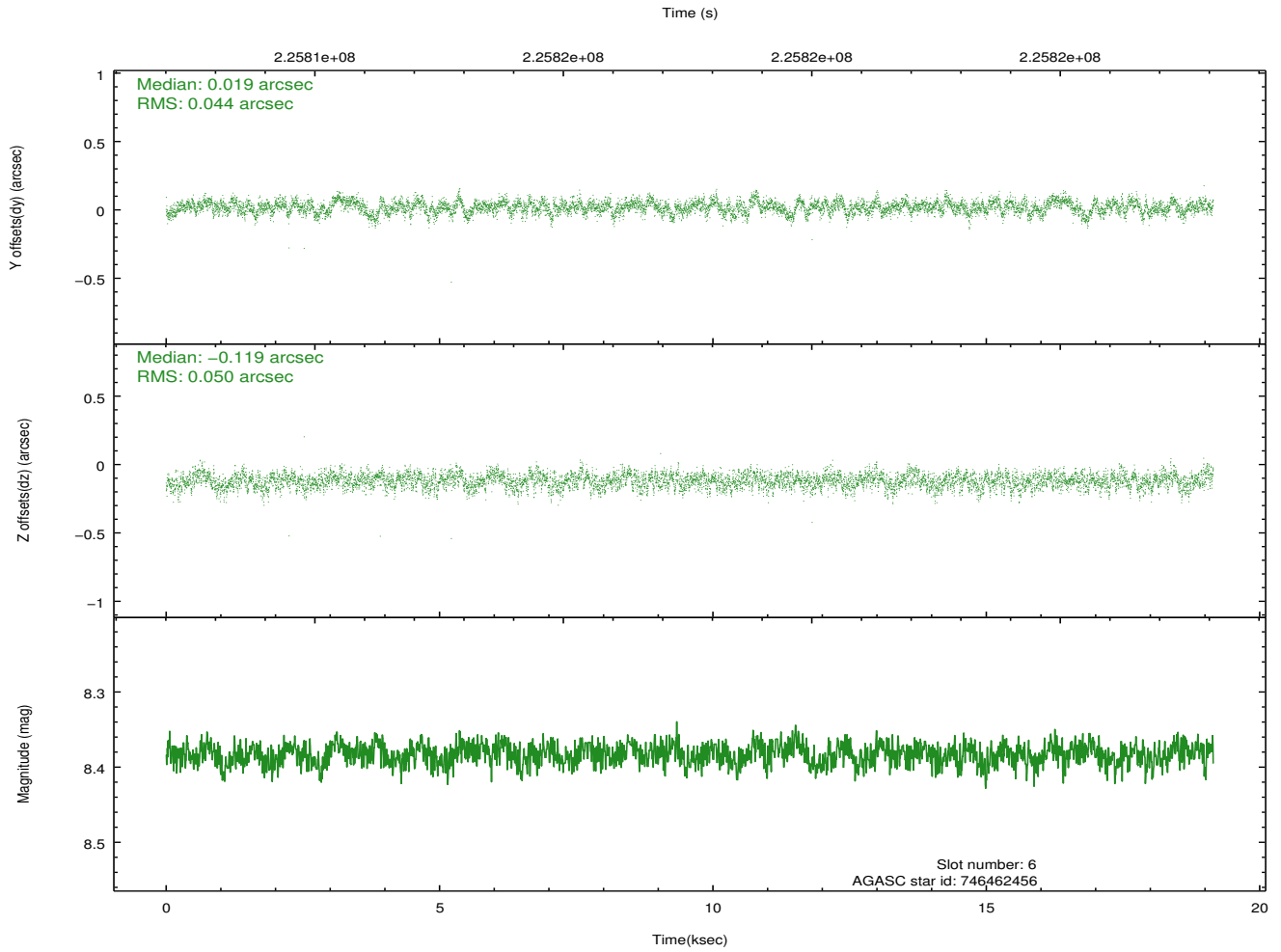
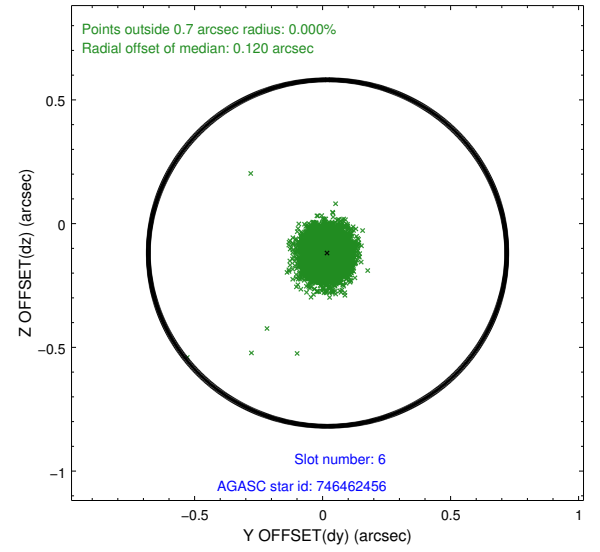
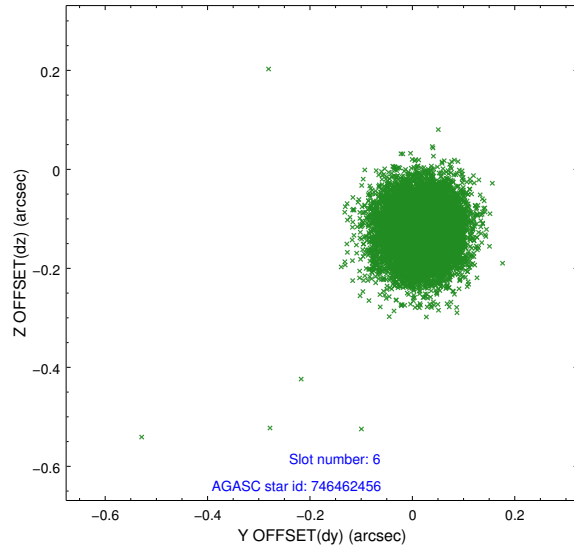




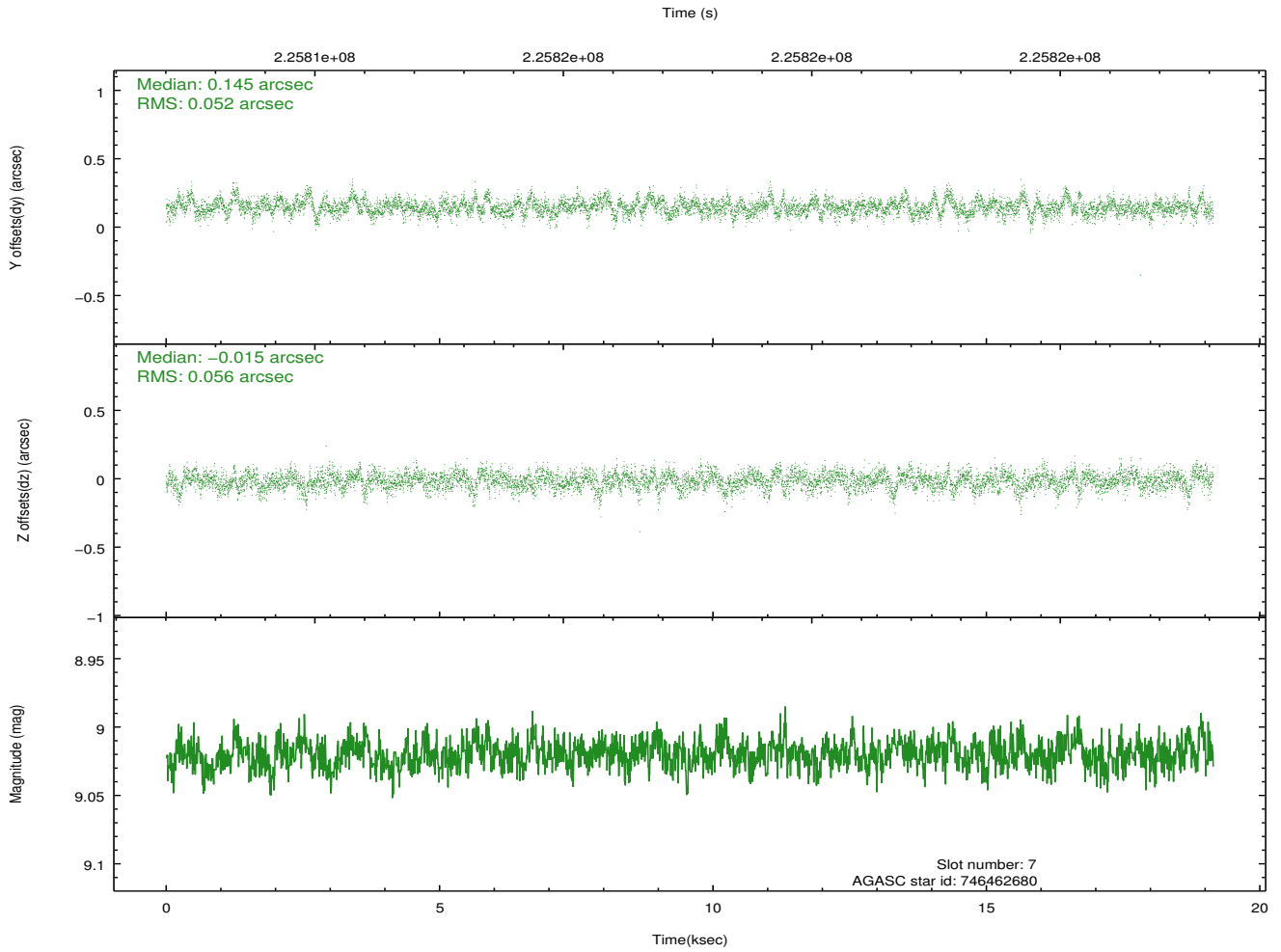
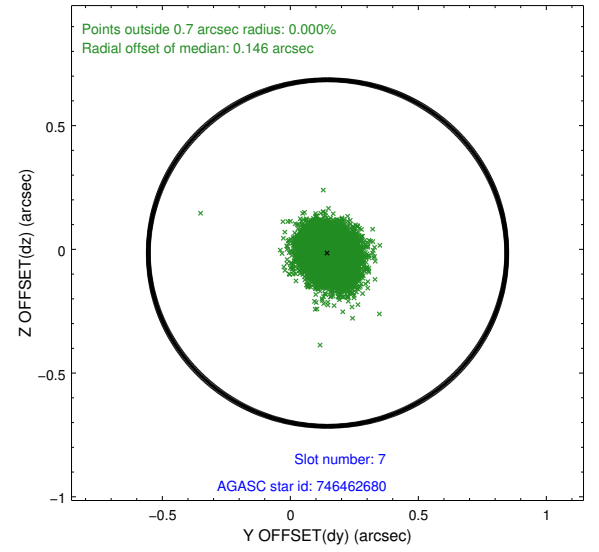
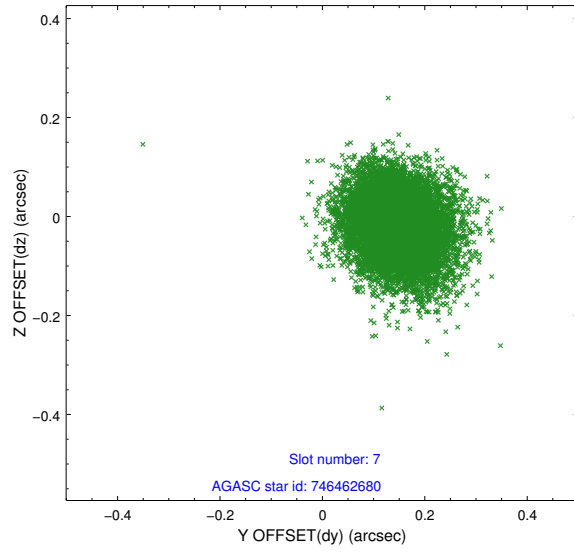
### 2.4.3 Slot 5



## 2.4.4 Slot 6

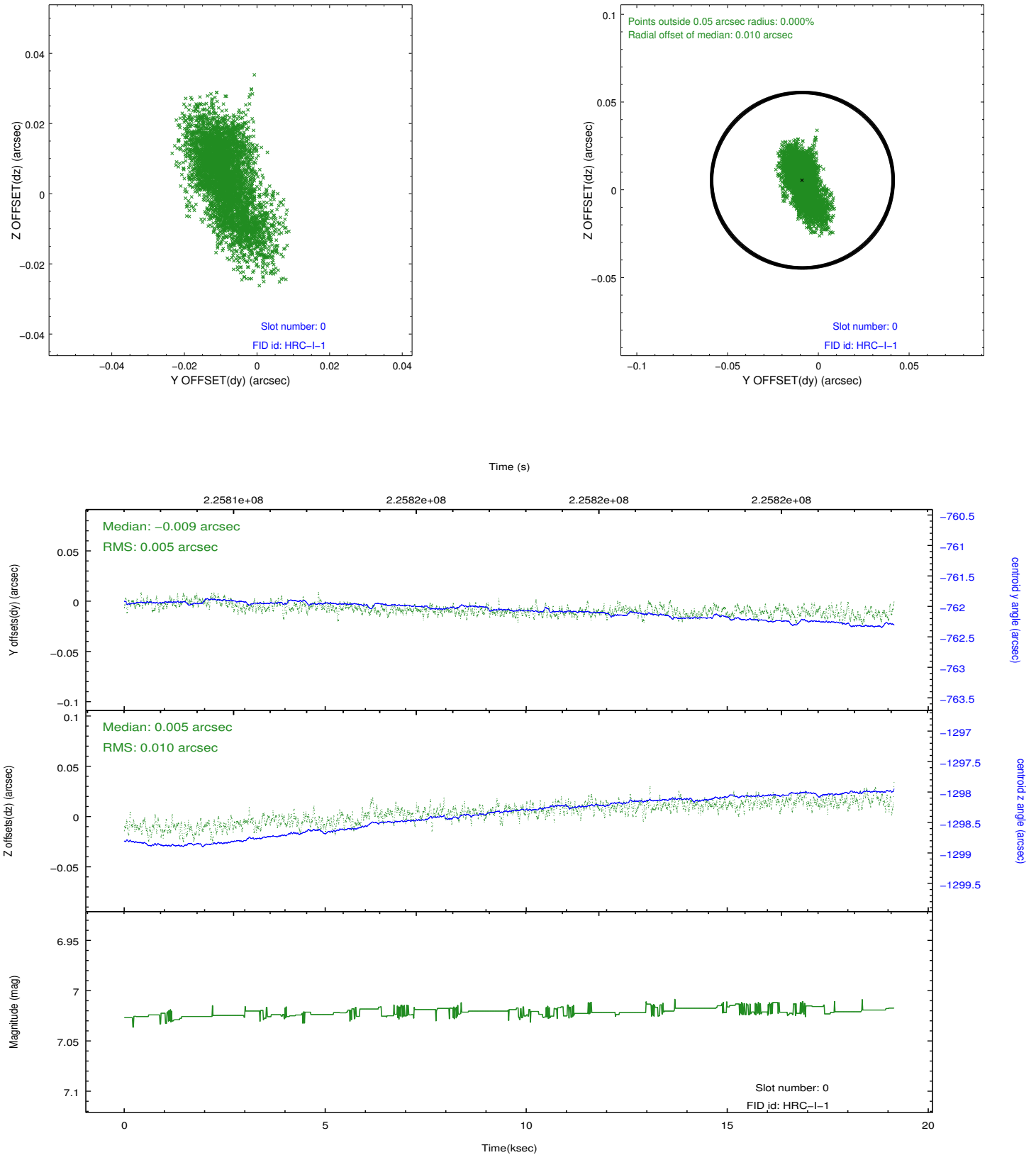


## 2.4.5 Slot 7

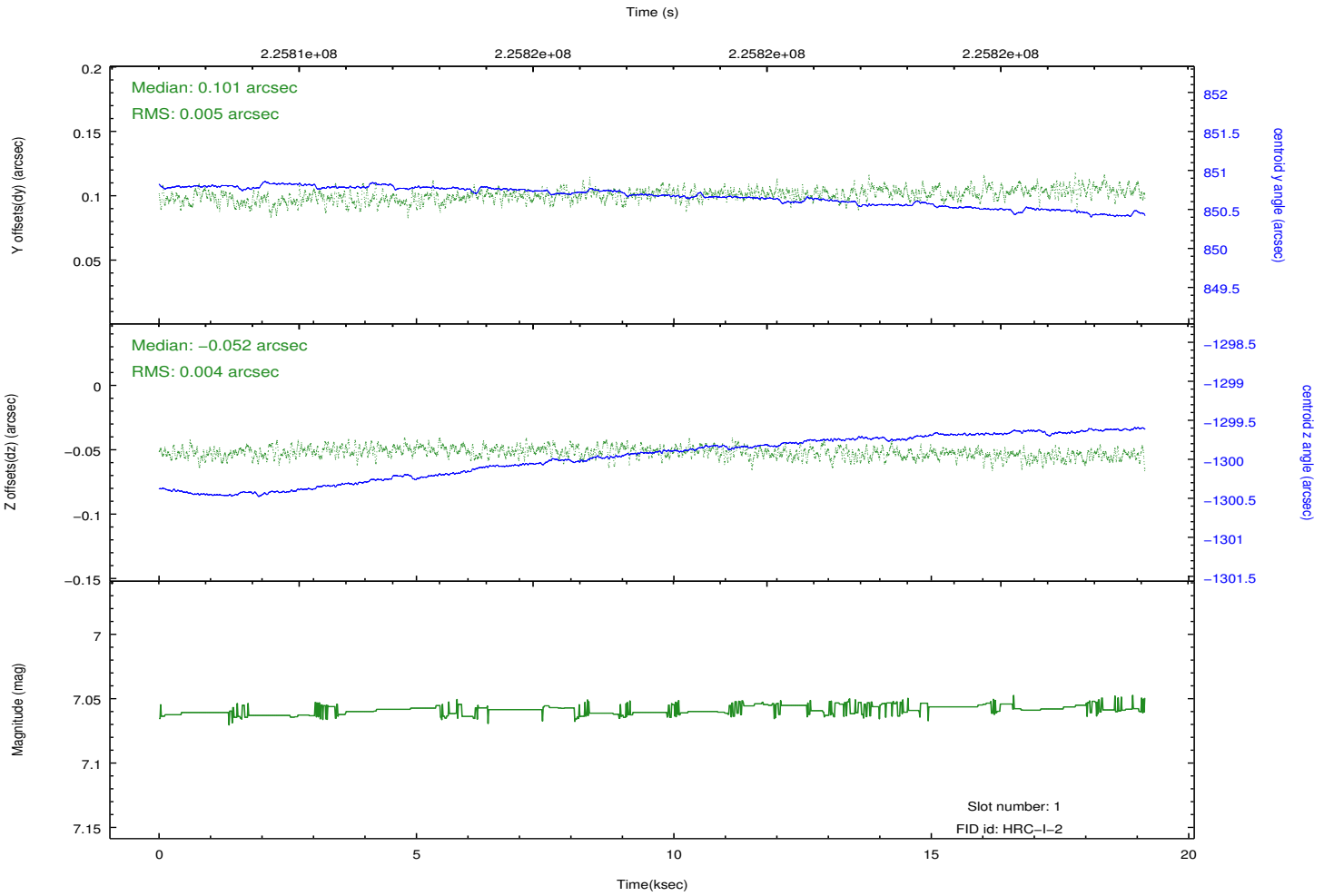
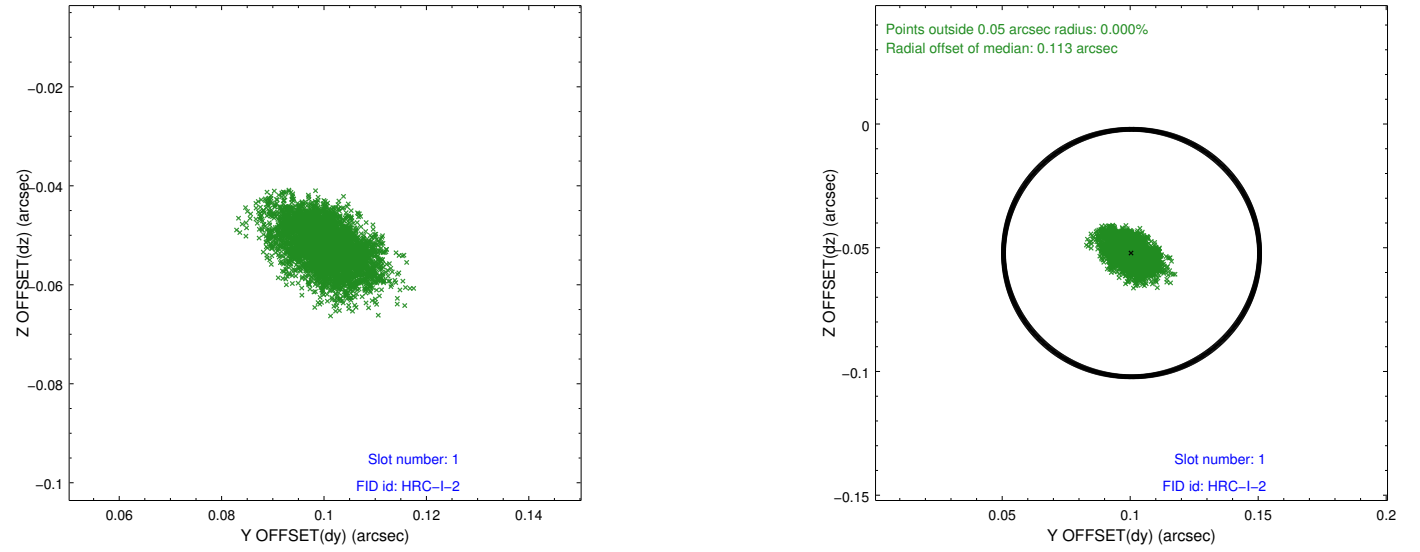


## 2.5 FID Slots

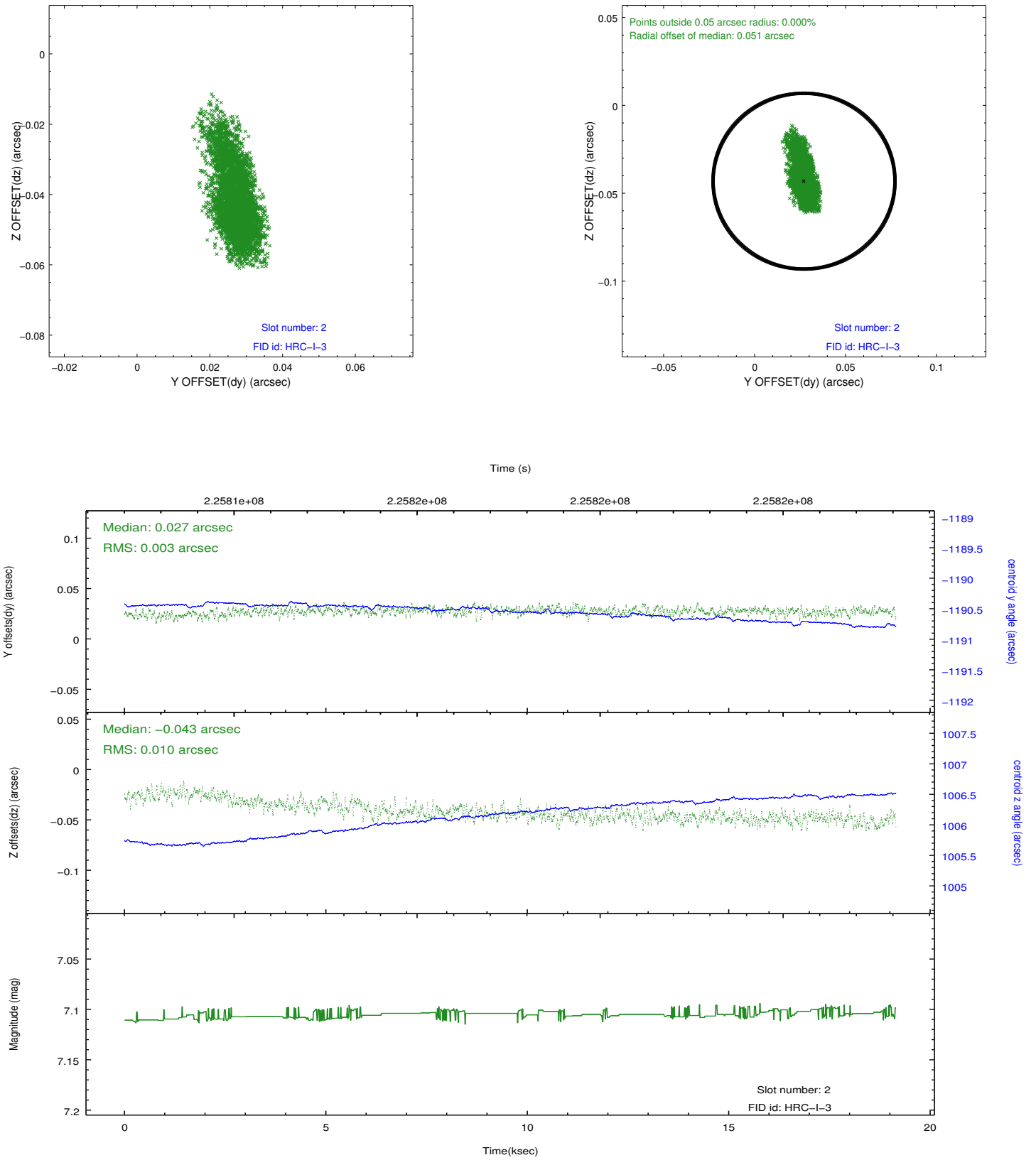
### 2.5.1 Slot 0



## 2.5.2 Slot 1



### 2.5.3 Slot 2



## A Summary

### A.1 Status

V&V Scientist	Jen Lauer
V&V Date (YYYY-MM-DD)	2013.01.11
V&V Edition	1
V&V Disposition and Status	OK
V&V Charge Time	19.15007

### A.2 Comments

Window constraint satisfied.