

V&V Reference Report

L2 ASCDS Version : 7.6.8

Observation 60642 - L2 Version 001
Chandra X-Ray Center

L2 Processing Date : Jul 14 2006

Contents

1	Front	2
2	OBI	3
2.1	OBI	3
2.1.1	Images	3
2.1.2	Bias	3
2.1.3	Parameters	4
2.1.4	Events	4
2.2	Compared Parameters	5
2.3	Aspect	6
2.4	Star Slots	8
2.5	FID Slots	8
A	Summary	9
A.1	Status	9
A.2	Comments	9

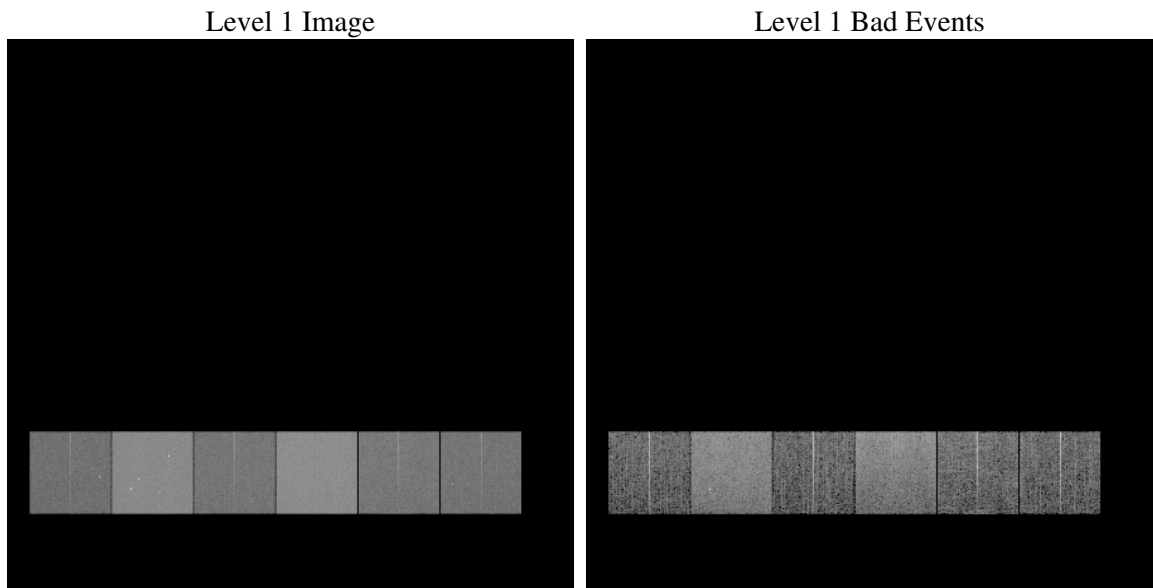
1 Front

seq_num	
obs_id	60642
title	ACIS-456789 diagnostics
observer	CHANDRA engineering request/realtime commanding
object	
dtcycle	0
cycle	P
ra_targ	0.0
dec_targ	0.0
ra_nom	300.02580599322
dec_nom	-32.981315754353
roll_nom	7.9864056352792
revision	2
ontime	9731.1999637485
livetime	9607.9776503823
ontime4	4575.2384781539
ontime5	9731.1999637485
ontime6	5045.1435485482
ontime7	9731.1999637485
ontime8	5184.5887650549
ontime9	4944.549742341
l2events	1414031

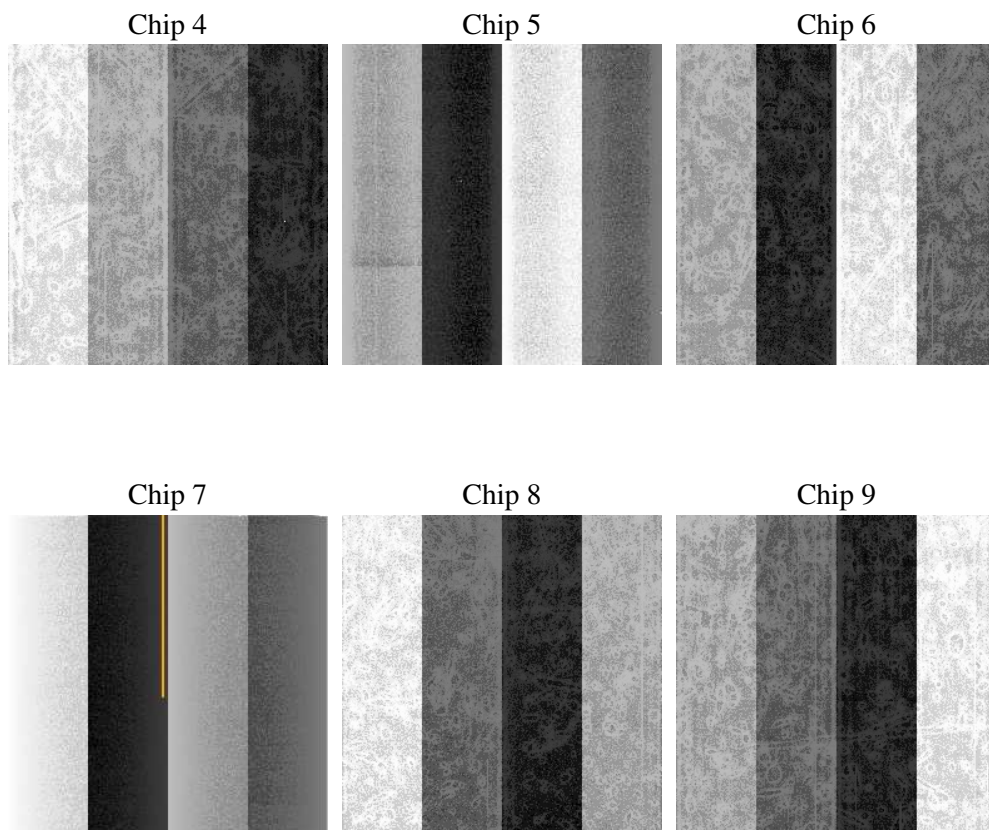
2 OBI

2.1 OBI

2.1.1 Images



2.1.2 Bias



2.1.3 Parameters

obi_num	0
ascdsver	7.6.8
caldbver	3.2.2
date	2006-07-14T18:48:30
revision	2

sched_exp_time	0.0
ontime	9732.7452847362
ontime4	4576.3364720345
ontime5	9732.7452847362
ontime6	5046.282582432
ontime7	9732.7452847362
ontime8	5185.645718962
ontime9	4945.8118962348
l1events	1765969

2.1.4 Events

	ccd 4	ccd 5	ccd 6	ccd 7	ccd 8	ccd 9
level 1 events	204150	410099	235111	442825	248859	224925
rejected events	33971	71440	34570	64259	39093	34484
rejected %	16%	17%	14%	14%	15%	15%

	ccd 4	ccd 5	ccd 6	ccd 7	ccd 8	ccd 9
grade 0 events	99104	45151	109215	69647	115010	105052
	48%	11%	46%	15%	46%	46%
grade 1 events	706	576	544	157	530	582
	0%	0%	0%	0%	0%	0%
grade 2 events	26963	157901	34924	112689	36474	32805
	13%	38%	14%	25%	14%	14%
grade 3 events	11175	11841	12474	28563	13515	12053
	5%	2%	5%	6%	5%	5%
grade 4 events	11207	11642	12454	28474	13565	12235
	5%	2%	5%	6%	5%	5%
grade 5 events	2169	7807	2418	8354	2895	2551
	1%	1%	1%	1%	1%	1%
grade 6 events	21730	112124	31474	139193	31202	28296
	10%	27%	13%	31%	12%	12%
grade 7 events	31096	63057	31608	55748	35668	31351
	15%	15%	13%	12%	14%	13%

2.2 Compared Parameters

Parameter	Planned	Actual	Parameter	Planned	Actual
Instrument	ACIS	ACIS	Obspar format version number	6	6
Detector	ACIS-456789	ACIS-456789	Obspar file type	PREDICTED	ACTUAL
Grating	NONE	NONE	Obspar update status	NONE	UPDATED
Data mode	FAINT	FAINT	On-chip summing requested	N	N
Observation mode	SECONDARY	SECONDARY	Subarray requested	NONE	NONE
Pointing RA	0	300.0258059932162	Alternating exposures requested	N	N
Pointing Dec	0	-32.98131575435296	Primary exposure time	0.000000	3.2
Pointing Roll	0.0	7.986405635279205			
SIM focus pos (mm)	-0.684267	-0.6828225247311905			
SIM defocus (mm)	0	0.8505141146731063			
SIM translation stage pos (mm)	-190.132523	250.466033080201			
SIM translation stage offset (mm)	0	-0.01005468664627074			
Observation start time	174988397.568999	174988396.5443			
Observation start date	2003-07-19T07:53:18	2003-07-19T07:53:16			
Observation end time	174999978.019492	174999976.9948			
Observation end date	2003-07-19T11:06:18	2003-07-19T11:06:16			
Read mode	TIMED	TIMED			

2.3 Aspect

2.4 Star Slots

2.5 FID Slots

A Summary

A.1 Status

V&V Scientist	Beth Sundheim
V&V Date (YYYY-MM-DD)	2006.07.14
V&V Edition	1
V&V Disposition and Status	OK
V&V Charge Time	9.73119996

A.2 Comments