

# V&V Reference Report

## L2 ASCDS Version : 8.4.5

Observation 60532 - L2 Version 3  
Chandra X-Ray Center

L2 Processing Date : Nov 5 2012

## Contents

<b>1</b>	<b>Front</b>	<b>2</b>
<b>2</b>	<b>OBI</b>	<b>3</b>
2.1	OBI . . . . .	3
2.1.1	Images . . . . .	3
2.1.2	Bias . . . . .	3
2.1.3	Parameters . . . . .	4
2.1.4	Events . . . . .	4
2.2	Compared Parameters . . . . .	5
2.3	Star Slots . . . . .	6
2.4	FID Slots . . . . .	6
<b>A</b>	<b>Summary</b>	<b>7</b>
A.1	Status . . . . .	7
A.2	Comments . . . . .	7

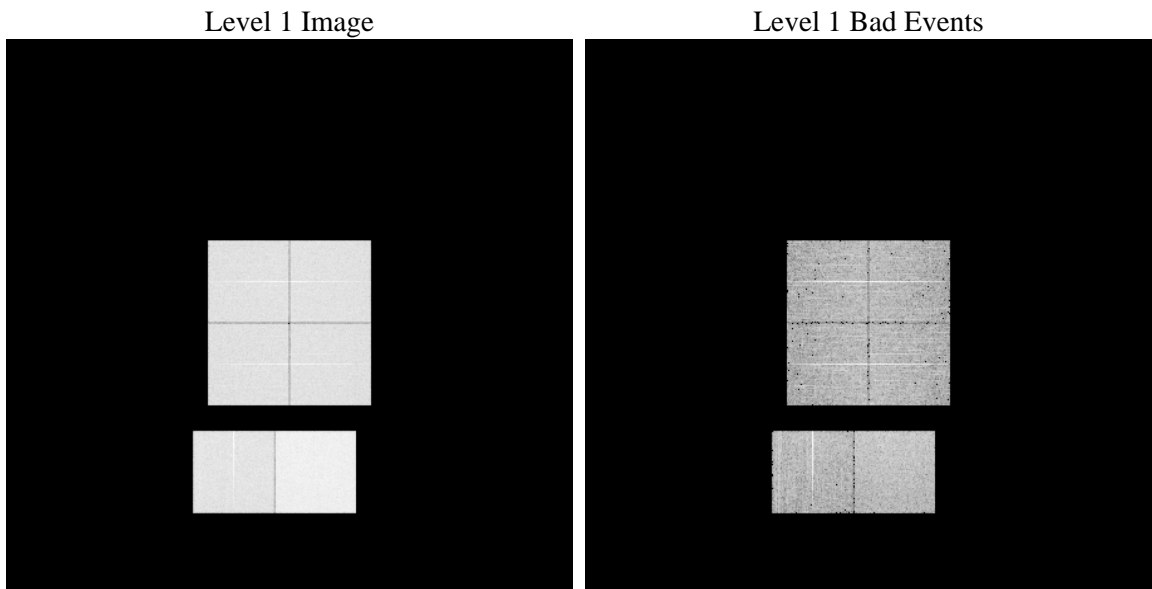
# 1 Front

seq_num	&#160	Sequence number
obs_id	60532	Observation id
title	ACIS-012367 diagnostics	Proposal title
observer	CHANDRA engineering request/realtime commanding	Principal investig
object	&#160	Source name
dtcycle	0	&#160
cycle	P	events from which exps? Prim/Second/Both
ra_targ	0.0	Observer's specified target RA [deg]
dec_targ	0.0	Observer's specified target Dec [deg]
ra_nom	319.04107482714	Nominal RA [deg]
dec_nom	-50.011056593778	Nominal Dec [deg]
roll_nom	304.47037275791	Nominal Roll [deg]
revision	3	Processing version of data
ontime	8425.5999686122	Sum of GTIs [s]
livetime	8318.9099485224	Livetime [s]
ontime0	5379.0886970758	Sum of GTIs [s]
ontime1	5450.389633894	Sum of GTIs [s]
ontime2	5174.9062447846	Sum of GTIs [s]
ontime3	5175.5218572319	Sum of GTIs [s]
ontime6	5651.3305177391	Sum of GTIs [s]
ontime7	8425.5999686122	Sum of GTIs [s]
l2events	1244613	Number of level 2 events

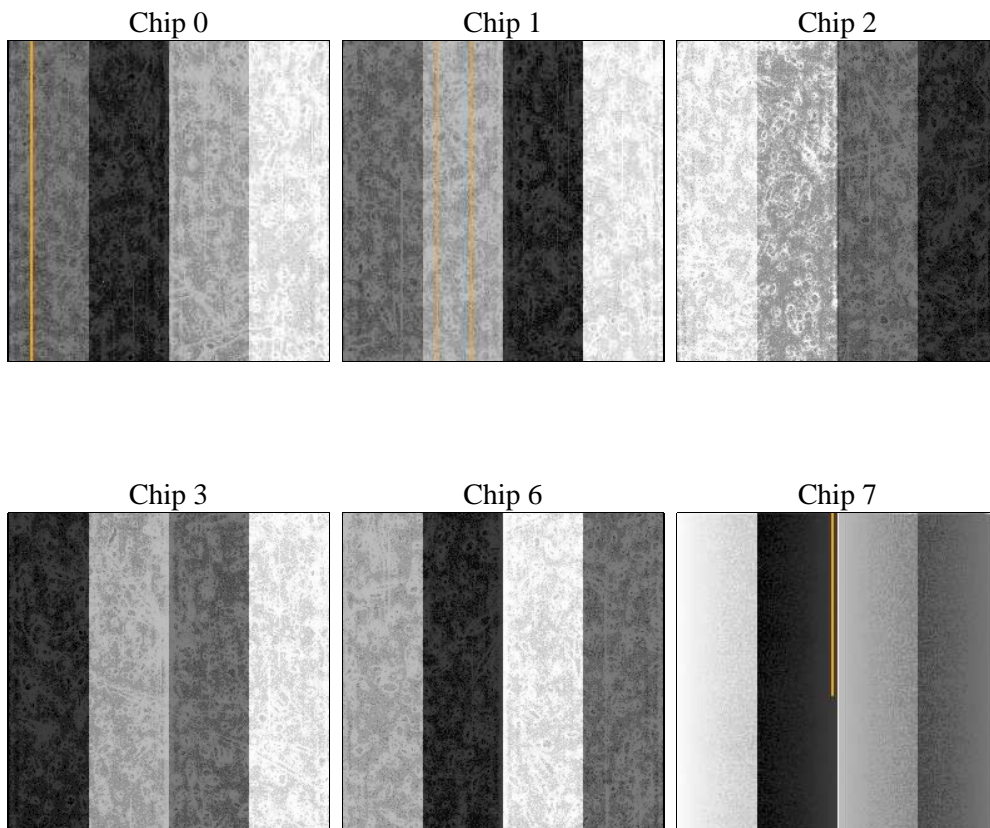
## 2 OBI

### 2.1 OBI

#### 2.1.1 Images



#### 2.1.2 Bias



### 2.1.3 Parameters

obi_num	0	Obi number	sched_exp_time	0.0	[s] Scheduled observation exposure time
ascdsver	8.4.5	Processing system revision	ontime	8425.5999686122	Sum of GTIs [s]
caldbver	4.5.2	&#160	ontime0	5379.0886970758	Sum of GTIs [s]
date	2012-11-05T06:11:50	Date and time of file creation	ontime1	5450.389633894	Sum of GTIs [s]
revision	3	Processing version of data	ontime2	5174.9062447846	Sum of GTIs [s]
			ontime3	5175.5218572319	Sum of GTIs [s]
			ontime6	5651.3305177391	Sum of GTIs [s]
			ontime7	8425.5999686122	Sum of GTIs [s]
			l1events	1537988	Number of level 1 events

### 2.1.4 Events

	ccd 0	ccd 1	ccd 2	ccd 3	ccd 6	ccd 7		ccd 0	ccd 1	ccd 2	ccd 3	ccd 6	ccd 7
level 1 events	230575	232538	223976	226597	252944	371358	grade 0 events	107399	108133	105473	106340	116709	80489
rejected events	36706	36115	35807	37922	39778	47800		46%	46%	47%	46%	46%	21%
rejected %	15%	15%	15%	16%	15%	12%	grade 1 events	593	539	639	641	574	232
								0%	0%	0%	0%	0%	0%
							grade 2 events	33793	34817	32323	32286	36399	71136
								14%	14%	14%	14%	14%	19%
							grade 3 events	12551	12486	12238	12210	13152	32546
								5%	5%	5%	5%	5%	8%
							grade 4 events	12461	12518	12426	12252	13371	32500
								5%	5%	5%	5%	5%	8%
							grade 5 events	2396	2420	2263	2517	2724	8638
								1%	1%	1%	1%	1%	2%
							grade 6 events	28446	29053	26440	26395	34462	108401
								12%	12%	11%	11%	13%	29%
							grade 7 events	32936	32572	32174	33956	35553	37416
								14%	14%	14%	14%	14%	10%

## 2.2 Compared Parameters

Parameter	Planned	Actual	Parameter	Planned	Actual
Instrument	ACIS	ACIS	Obspar format version number	7	7
Detector	ACIS-012367	ACIS-012367	Obspar file type	PREDICTED	ACTUAL
Grating	NONE	NONE	Obspar update status	NONE	UPDATED
Data mode	FAINT	FAINT	On-chip summing requested	N	N
Observation mode	SECONDARY	SECONDARY	Subarray requested	NONE	NONE
[deg] Pointing RA	0	319.0410748271411	Alternating exposures requested	N	N
[deg] Pointing Dec	0	-50.01105659377779	[s] Primary exposure time	0.000000	3.2
[deg] Pointing Roll	0.0	304.4703727579057			
[mm] SIM focus pos	-0.782348	-0.6828225247311905			
[mm] SIM defocus	0	0.8505141146731063			
[mm] SIM translation stage pos	-233.592463	250.466033080201			
[mm] SIM translation stage offset	0	-0.01005468664627074			
[s] Observation start time (MET)	181651287.354137	181651286.32941			
Observation start date	2003-10-04T10:41:27	2003-10-04T10:41:26			
[s] Observation end time (MET)	181677219.855251	181677218.83053			
Observation end date	2003-10-04T17:53:40	2003-10-04T17:53:38			
Read mode	TIMED	TIMED			

## 2.3 Star Slots

## 2.4 FID Slots

## **A Summary**

### **A.1 Status**

V&V Scientist	Beth Sundheim
V&V Date (YYYY-MM-DD)	2012.12.07
V&V Edition	1
V&V Disposition and Status	OK
V&V Charge Time	8.4255999686122

### **A.2 Comments**