

V&V Reference Report

L2 ASCDS Version : 8.4.5

Observation 60382 - L2 Version 3
Chandra X-Ray Center

L2 Processing Date : Nov 11 2012

Contents

| | | |
|----------|-------------------------------|----------|
| 1 | Front | 2 |
| 2 | OBI | 3 |
| 2.1 | OBI | 3 |
| 2.1.1 | Images | 3 |
| 2.1.2 | Bias | 3 |
| 2.1.3 | Parameters | 4 |
| 2.1.4 | Events | 4 |
| 2.2 | Compared Parameters | 5 |
| 2.3 | Star Slots | 6 |
| 2.4 | FID Slots | 6 |
| A | Summary | 7 |
| A.1 | Status | 7 |
| A.2 | Comments | 7 |

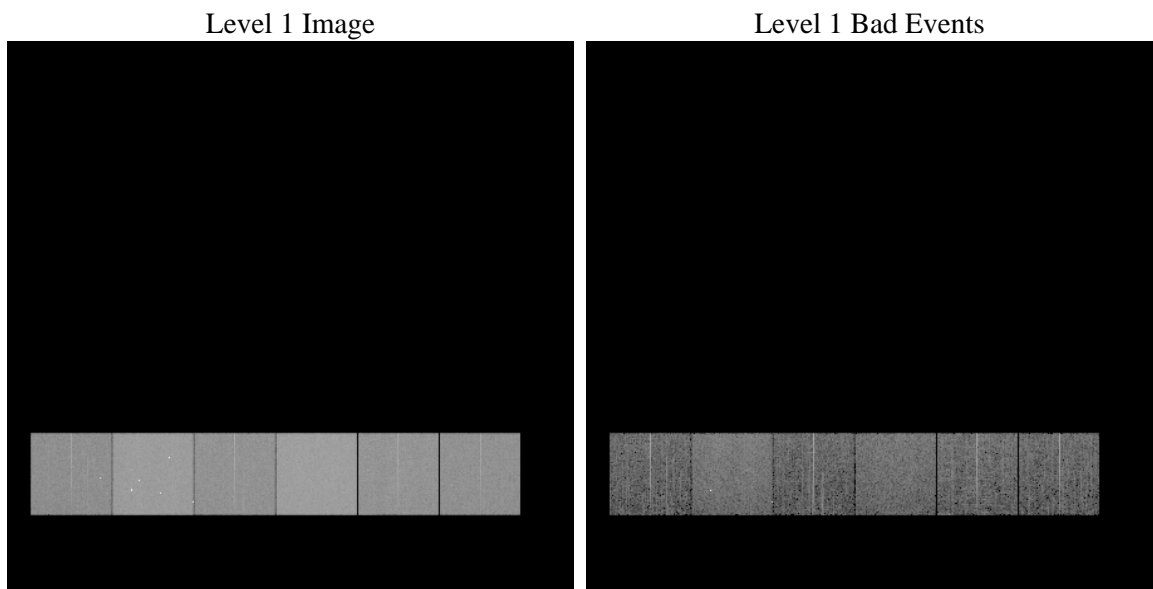
1 Front

| | | |
|----------|---|---|
| seq_num | | Sequence number |
| obs_id | 60382 | Observation id |
| title | ACIS-456789 diagnostics | Proposal title |
| observer | CHANDRA engineering request/realtime commanding | Principal investig |
| object | | Source name |
| dtcycle | 0 | |
| cycle | P | events from which exps? Prim/Second/Both |
| ra_targ | 0.0 | Observer's specified target RA [deg] |
| dec_targ | 0.0 | Observer's specified target Dec [deg] |
| ra_nom | 158.01466581145 | Nominal RA [deg] |
| dec_nom | -17.975016121085 | Nominal Dec [deg] |
| roll_nom | 27.878323031955 | Nominal Roll [deg] |
| revision | 3 | Processing version of data |
| ontime | 7801.5999709368 | Sum of GTIs [s] |
| livetime | 7702.8114145452 | Livetime [s] |
| ontime4 | 4638.4100461304 | Sum of GTIs [s] |
| ontime5 | 7801.5999709368 | Sum of GTIs [s] |
| ontime6 | 5085.6665038764 | Sum of GTIs [s] |
| ontime7 | 7801.5999709368 | Sum of GTIs [s] |
| ontime8 | 5176.4133223295 | Sum of GTIs [s] |
| ontime9 | 4897.6886828542 | Sum of GTIs [s] |
| l2events | 1119836 | Number of level 2 events |

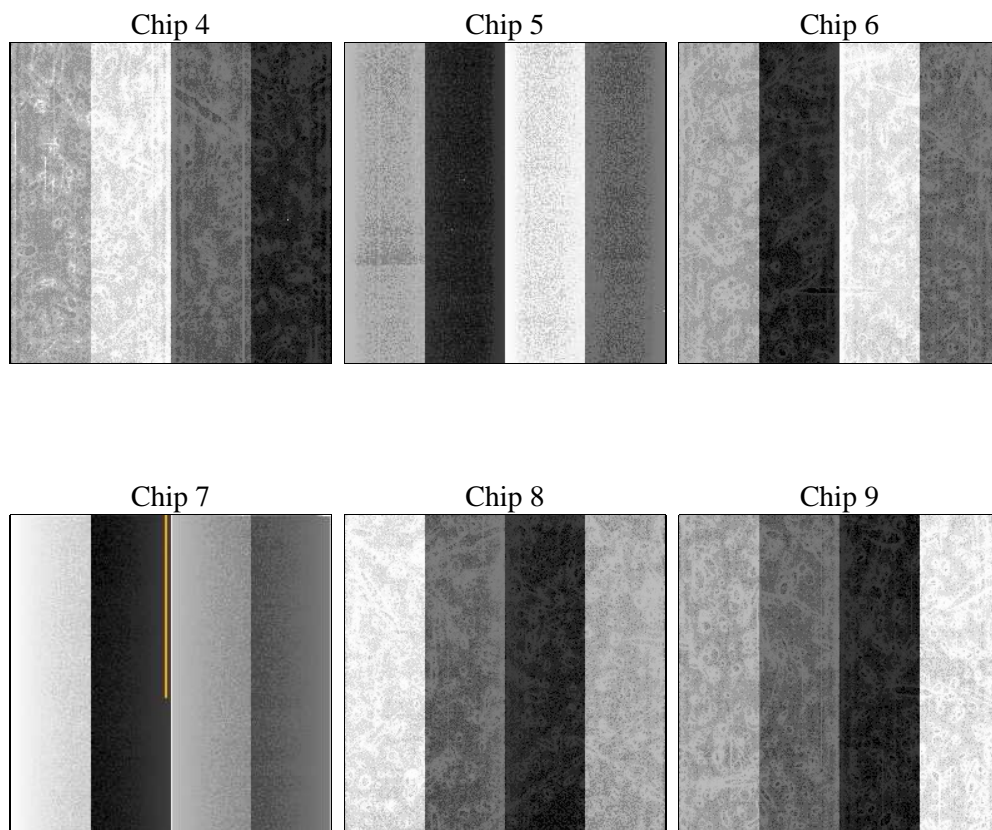
2 OBI

2.1 OBI

2.1.1 Images



2.1.2 Bias



2.1.3 Parameters

| | | | | | |
|----------|---------------------|--------------------------------|----------------|-----------------|---|
| obi_num | 0 | Obi number | sched_exp_time | 0.0 | [s] Scheduled observation exposure time |
| ascdsver | 8.4.5 | Processing system revision | ontime | 7801.5999709368 | Sum of GTIs [s] |
| caldsver | 4.5.2 | | ontime4 | 4638.4100461304 | Sum of GTIs [s] |
| date | 2012-11-11T14:07:07 | Date and time of file creation | ontime5 | 7801.5999709368 | Sum of GTIs [s] |
| revision | 3 | Processing version of data | ontime6 | 5085.6665038764 | Sum of GTIs [s] |
| | | | ontime7 | 7801.5999709368 | Sum of GTIs [s] |
| | | | ontime8 | 5176.4133223295 | Sum of GTIs [s] |
| | | | ontime9 | 4897.6886828542 | Sum of GTIs [s] |
| | | | l1events | 1416377 | Number of level 1 events |

2.1.4 Events

| | ccd 4 | ccd 5 | ccd 6 | ccd 7 | ccd 8 | ccd 9 | | ccd 4 | ccd 5 | ccd 6 | ccd 7 | ccd 8 | ccd 9 |
|-----------------|--------|--------|--------|--------|--------|--------|----------------|-------|-------|-------|-------|-------|-------|
| level 1 events | 181670 | 299194 | 207593 | 315834 | 218257 | 193829 | grade 0 events | 86866 | 56037 | 95977 | 68432 | 99275 | 89250 |
| rejected events | 33309 | 52416 | 32330 | 40733 | 37546 | 32352 | | 47% | 18% | 46% | 21% | 45% | 46% |
| rejected % | 18% | 17% | 15% | 12% | 17% | 16% | grade 1 events | 614 | 332 | 393 | 182 | 464 | 474 |
| | | | | | | | | 0% | 0% | 0% | 0% | 0% | 0% |
| | | | | | | | grade 2 events | 23192 | 91179 | 30155 | 61150 | 31461 | 27554 |
| | | | | | | | | 12% | 30% | 14% | 19% | 14% | 14% |
| | | | | | | | grade 3 events | 9836 | 13701 | 10918 | 27769 | 11683 | 10318 |
| | | | | | | | | 5% | 4% | 5% | 8% | 5% | 5% |
| | | | | | | | grade 4 events | 9672 | 13414 | 10949 | 27385 | 11691 | 10528 |
| | | | | | | | | 5% | 4% | 5% | 8% | 5% | 5% |
| | | | | | | | grade 5 events | 2140 | 8524 | 2307 | 7606 | 2691 | 2345 |
| | | | | | | | | 1% | 2% | 1% | 2% | 1% | 1% |
| | | | | | | | grade 6 events | 18795 | 72447 | 27264 | 90365 | 26601 | 23827 |
| | | | | | | | | 10% | 24% | 13% | 28% | 12% | 12% |
| | | | | | | | grade 7 events | 30555 | 43560 | 29630 | 32945 | 34391 | 29533 |
| | | | | | | | | 16% | 14% | 14% | 10% | 15% | 15% |

2.2 Compared Parameters

| Parameter | Planned | Actual | Parameter | Planned | Actual |
|-----------------------------------|---------------------|----------------------|---------------------------------|-----------|---------|
| Instrument | ACIS | ACIS | Obspar format version number | 7 | 7 |
| Detector | ACIS-456789 | ACIS-456789 | Obspar file type | PREDICTED | ACTUAL |
| Grating | NONE | NONE | Obspar update status | NONE | UPDATED |
| Data mode | FAINT | FAINT | On-chip summing requested | N | N |
| Observation mode | SECONDARY | SECONDARY | Subarray requested | NONE | NONE |
| [deg] Pointing RA | 0 | 158.0146658114502 | Alternating exposures requested | N | N |
| [deg] Pointing Dec | 0 | -17.97501612108546 | [s] Primary exposure time | 0.000000 | 3.2 |
| [deg] Pointing Roll | 0.0 | 27.8783230319549 | | | |
| [mm] SIM focus pos | -0.684267 | -0.6828225247311905 | | | |
| [mm] SIM defocus | 0 | 0.8505141146731063 | | | |
| [mm] SIM translation stage pos | -190.132523 | 250.466033080201 | | | |
| [mm] SIM translation stage offset | 0 | -0.01005468664627074 | | | |
| [s] Observation start time (MET) | 192588316.628488 | 192588315.60377 | | | |
| Observation start date | 2004-02-08T00:45:17 | 2004-02-08T00:45:15 | | | |
| [s] Observation end time (MET) | 192604013.479175 | 192604012.45445 | | | |
| Observation end date | 2004-02-08T05:06:53 | 2004-02-08T05:06:52 | | | |
| Read mode | TIMED | TIMED | | | |

2.3 Star Slots

2.4 FID Slots

A Summary

A.1 Status

| | |
|----------------------------|-----------------|
| V&V Scientist | Beth Sundheim |
| V&V Date (YYYY-MM-DD) | 2012.12.19 |
| V&V Edition | 1 |
| V&V Disposition and Status | OK |
| V&V Charge Time | 7.8015999709368 |

A.2 Comments