

V&V Reference Report

L2 ASCDS Version : 8.4.5

Observation 60232 - L2 Version 3
Chandra X-Ray Center

L2 Processing Date : Dec 1 2012

Contents

1	Front	2
2	OBI	3
2.1	OBI	3
2.1.1	Images	3
2.1.2	Bias	3
2.1.3	Parameters	4
2.1.4	Events	4
2.2	Compared Parameters	5
2.3	Star Slots	6
2.4	FID Slots	6
A	Summary	7
A.1	Status	7
A.2	Comments	7

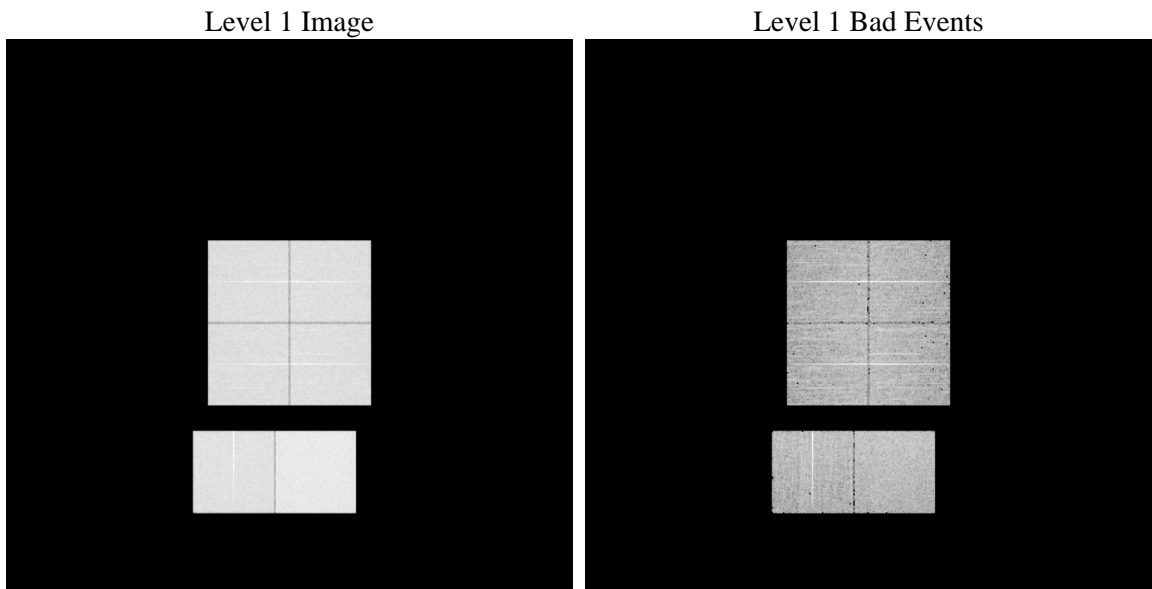
1 Front

seq_num	 	Sequence number
obs_id	60232	Observation id
title	ACIS-012367 diagnostics	Proposal title
observer	CHANDRA engineering request/realtime commanding	Principal investig
object	 	Source name
dtcycle	0	
cycle	P	events from which exps? Prim/Second/Both
ra_targ	0.0	Observer's specified target RA [deg]
dec_targ	0.0	Observer's specified target Dec [deg]
ra_nom	144.00943391717	Nominal RA [deg]
dec_nom	-32.027454570035	Nominal Dec [deg]
roll_nom	253.22951928253	Nominal Roll [deg]
revision	3	Processing version of data
ontime	8386.862393558	Sum of GTIs [s]
livetime	8280.6628919685	Livetime [s]
ontime0	6189.4455849826	Sum of GTIs [s]
ontime1	6325.5254251361	Sum of GTIs [s]
ontime2	5943.0498048663	Sum of GTIs [s]
ontime3	6102.0215266347	Sum of GTIs [s]
ontime6	6591.2026178837	Sum of GTIs [s]
ontime7	8386.862393558	Sum of GTIs [s]
l2events	1185991	Number of level 2 events

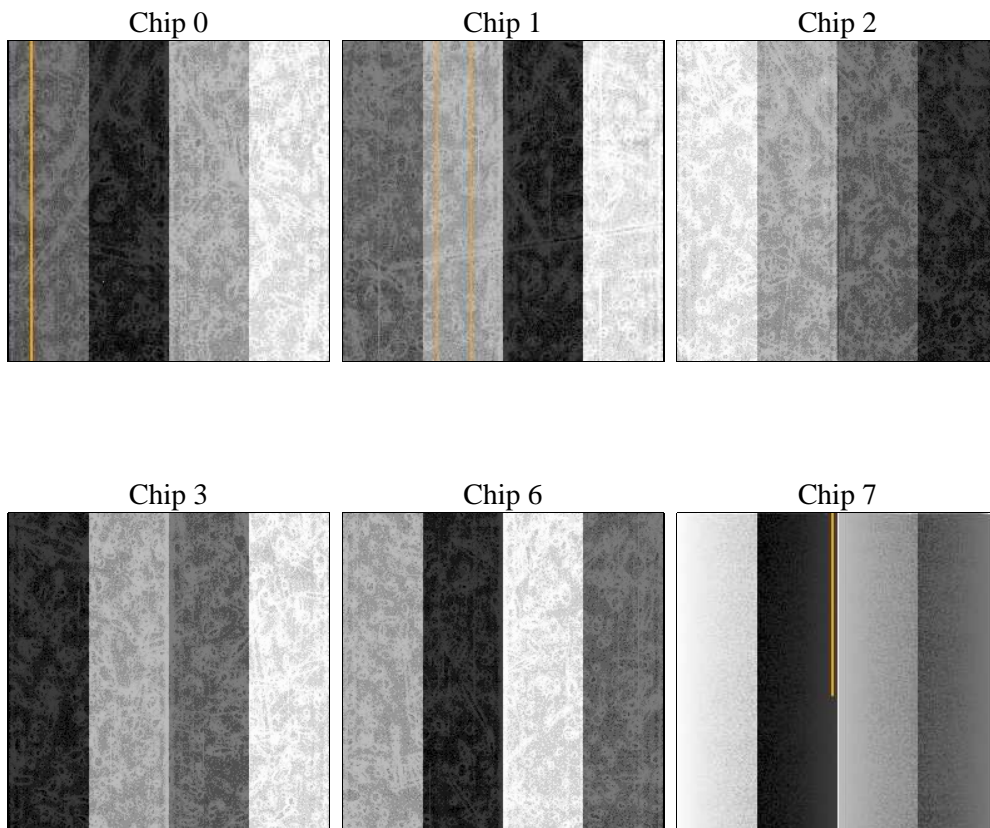
2 OBI

2.1 OBI

2.1.1 Images



2.1.2 Bias



2.1.3 Parameters

obi_num	0	Obi number	sched_exp_time	0.0	[s] Scheduled observation exposure time
ascdsver	8.4.5	Processing system revision	ontime	8386.862393558	Sum of GTIs [s]
caldsver	4.5.2	 	ontime0	6189.4455849826	Sum of GTIs [s]
date	2012-12-01T11:32:43	Date and time of file creation	ontime1	6325.5254251361	Sum of GTIs [s]
revision	3	Processing version of data	ontime2	5943.0498048663	Sum of GTIs [s]
			ontime3	6102.0215266347	Sum of GTIs [s]
			ontime6	6591.2026178837	Sum of GTIs [s]
			ontime7	8386.862393558	Sum of GTIs [s]
			l1events	1532747	Number of level 1 events

2.1.4 Events

	ccd 0	ccd 1	ccd 2	ccd 3	ccd 6	ccd 7		ccd 0	ccd 1	ccd 2	ccd 3	ccd 6	ccd 7
level 1 events	234026	236689	230864	236635	261110	333423	grade 0 events	105410	105940	103871	106687	115045	68014
rejected events	44597	44784	47245	47905	50600	53546		45%	44%	44%	45%	44%	20%
rejected %	19%	18%	20%	20%	19%	16%	grade 1 events	610	520	663	651	586	227
								0%	0%	0%	0%	0%	0%
							grade 2 events	33402	34285	30893	32206	36733	62179
								14%	14%	13%	13%	14%	18%
							grade 3 events	12256	12307	12192	12481	13151	28115
								5%	5%	5%	5%	5%	8%
							grade 4 events	12248	12447	12232	12533	13346	28071
								5%	5%	5%	5%	5%	8%
							grade 5 events	2844	2884	2551	2950	3216	9261
								1%	1%	1%	1%	1%	2%
							grade 6 events	27669	28556	25961	26259	34065	95990
								11%	12%	11%	11%	13%	28%
							grade 7 events	39587	39750	42501	42868	44968	41566
								16%	16%	18%	18%	17%	12%

2.2 Compared Parameters

Parameter	Planned	Actual	Parameter	Planned	Actual
Instrument	ACIS	ACIS	Obspar format version number	7	7
Detector	ACIS-012367	ACIS-012367	Obspar file type	PREDICTED	ACTUAL
Grating	NONE	NONE	Obspar update status	NONE	UPDATED
Data mode	FAINT	FAINT	On-chip summing requested	N	N
Observation mode	SECONDARY	SECONDARY	Subarray requested	NONE	NONE
[deg] Pointing RA	0	144.0094339171689	Alternating exposures requested	N	N
[deg] Pointing Dec	0	-32.02745457003486	[s] Primary exposure time	0.000000	3.2
[deg] Pointing Roll	0.0	253.2295192825303			
[mm] SIM focus pos	-0.782348	-0.7809083437167272			
[mm] SIM defocus	0	0.7524282956875696			
[mm] SIM translation stage pos	-233.592463	250.466033080201			
[mm] SIM translation stage offset	0	-0.01005468664627074			
[s] Observation start time (MET)	201079337.051835	201079336.02685			
Observation start date	2004-05-16T07:22:17	2004-05-16T07:22:16			
[s] Observation end time (MET)	201101659.50282	201101658.47784			
Observation end date	2004-05-16T13:34:20	2004-05-16T13:34:18			
Read mode	TIMED	TIMED			

2.3 Star Slots

2.4 FID Slots

A Summary

A.1 Status

V&V Scientist	Beth Sundheim
V&V Date (YYYY-MM-DD)	2012.12.14
V&V Edition	1
V&V Disposition and Status	OK
V&V Charge Time	8.386862393558

A.2 Comments