

V&V Reference Report

L2 ASCDS Version : 8.5.1.1

Observation 59542 - L2 Version 3
Chandra X-Ray Center

L2 Processing Date : Dec 26 2012

Contents

1	Front	2
2	OBI	3
2.1	OBI	3
2.1.1	Images	3
2.1.2	Bias	3
2.1.3	Parameters	4
2.1.4	Events	4
2.2	Compared Parameters	5
2.3	Star Slots	6
2.4	FID Slots	6
A	Summary	7
A.1	Status	7
A.2	Comments	7

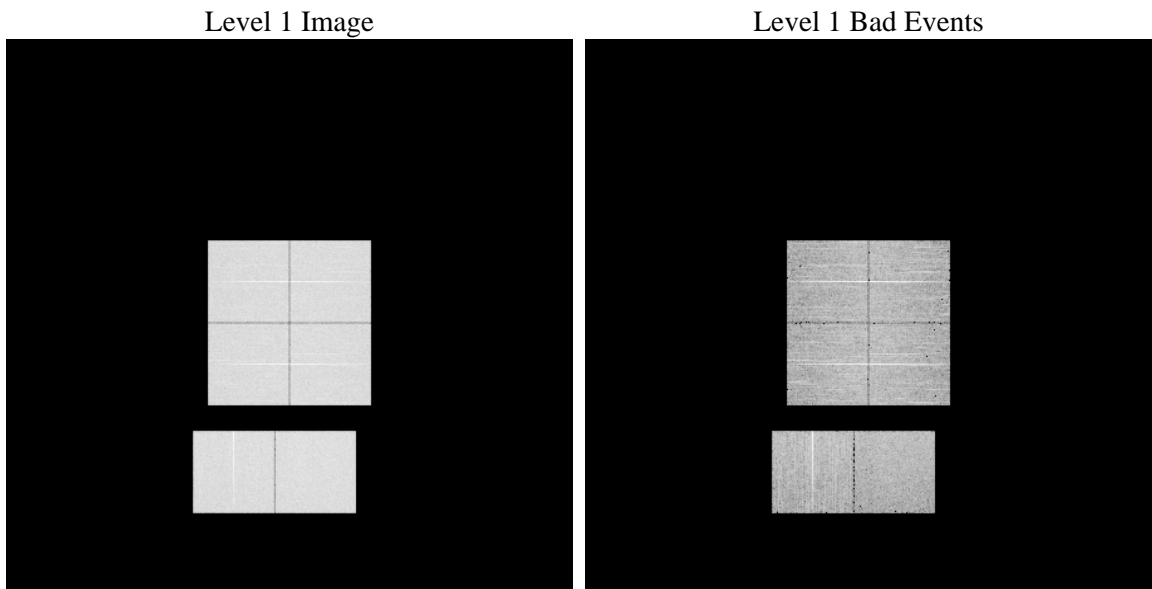
1 Front

seq_num	 	Sequence number
obs_id	59542	Observation id
title	ACIS-012367 diagnostics	Proposal title
observer	CHANDRA engineering request/realtime commanding	Principal investig
object	 	Source name
dtcycle	0	
cycle	P	events from which exps? Prim/Second/Both
ra_targ	0.0	Observer's specified target RA [deg]
dec_targ	0.0	Observer's specified target Dec [deg]
ra_nom	346.97866477538	Nominal RA [deg]
dec_nom	-22.976511765645	Nominal Dec [deg]
roll_nom	97.301190130837	Nominal Roll [deg]
revision	3	Processing version of data
ontime	8249.5999692678	Sum of GTIs [s]
livetime	8145.1385671442	Livetime [s]
ontime0	8181.5394129157	Sum of GTIs [s]
ontime1	8249.5999692678	Sum of GTIs [s]
ontime2	8094.0330049098	Sum of GTIs [s]
ontime3	8239.8770284653	Sum of GTIs [s]
ontime6	8249.5999692678	Sum of GTIs [s]
ontime7	8249.5999692678	Sum of GTIs [s]
l2events	1102475	Number of level 2 events

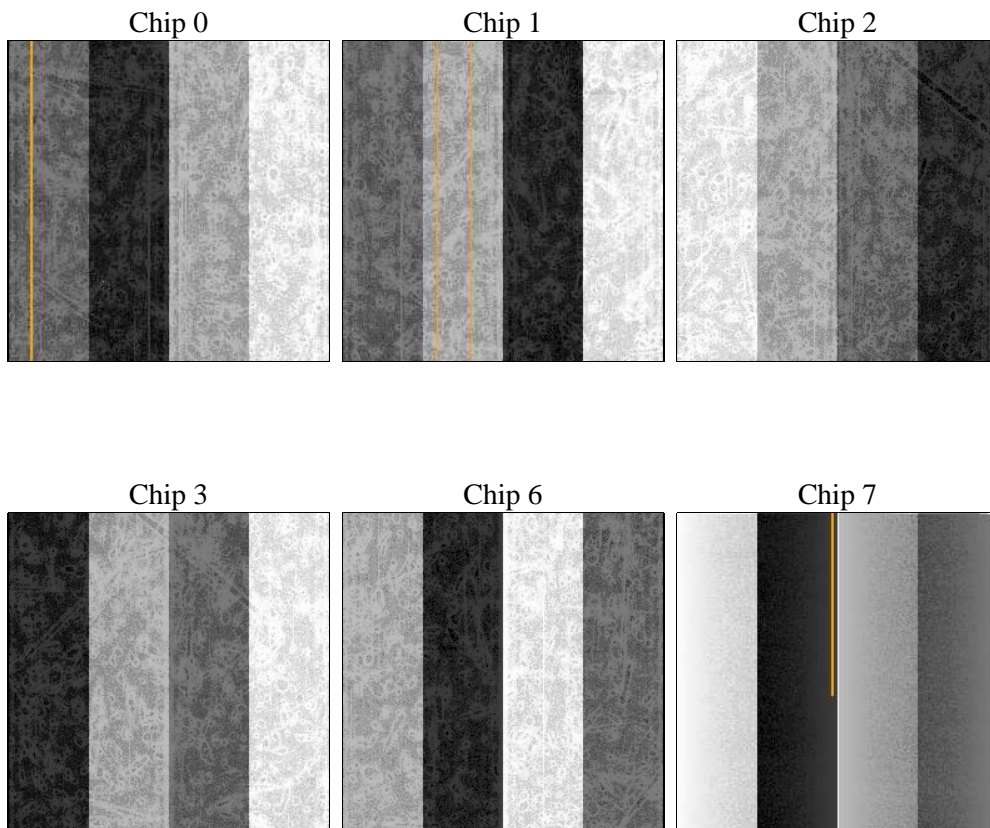
2 OBI

2.1 OBI

2.1.1 Images



2.1.2 Bias



2.1.3 Parameters

obi_num	0	Obi number	sched_exp_time	0.0	[s] Scheduled observation exposure time
ascdsver	8.5.1.1	Processing system revision	ontime	8249.5999692678	Sum of GTIs [s]
caldbver	4.5.5	 	ontime0	8181.5394129157	Sum of GTIs [s]
date	2012-12-26T14:38:09	Date and time of file creation	ontime1	8249.5999692678	Sum of GTIs [s]
revision	3	Processing version of data	ontime2	8094.0330049098	Sum of GTIs [s]
			ontime3	8239.8770284653	Sum of GTIs [s]
			ontime6	8249.5999692678	Sum of GTIs [s]
			ontime7	8249.5999692678	Sum of GTIs [s]
			l1events	1481554	Number of level 1 events

2.1.4 Events

	ccd 0	ccd 1	ccd 2	ccd 3	ccd 6	ccd 7		ccd 0	ccd 1	ccd 2	ccd 3	ccd 6	ccd 7
level 1 events	239314	243565	241626	245802	253385	257862	grade 0 events	104485	103048	105532	108168	105850	48956
rejected events	51831	53851	55802	55105	57490	48075		43%	42%	43%	44%	41%	18%
rejected %	21%	22%	23%	22%	22%	18%	grade 1 events	524	475	663	635	474	145
								0%	0%	0%	0%	0%	0%
							grade 2 events	32182	34790	30194	31713	34934	46639
								13%	14%	12%	12%	13%	18%
							grade 3 events	12192	12046	12183	12671	11802	20389
								5%	4%	5%	5%	4%	7%
							grade 4 events	11920	11958	12066	12406	11787	20178
								4%	4%	4%	5%	4%	7%
							grade 5 events	3218	3277	2983	3533	3427	7855
								1%	1%	1%	1%	1%	3%
							grade 6 events	27444	28563	26547	26366	32219	74355
								11%	11%	10%	10%	12%	28%
							grade 7 events	47349	49408	51458	50310	52892	39345
								19%	20%	21%	20%	20%	15%

2.2 Compared Parameters

Parameter	Planned	Actual
Instrument	ACIS	ACIS
Detector	ACIS-012367	ACIS-012367
Grating	NONE	NONE
Data mode	FAINT	FAINT
Observation mode	SECONDARY	SECONDARY
[deg] Pointing RA	0	346.9786647753809
[deg] Pointing Dec	0	-22.97651176564498
[deg] Pointing Roll	0.0	97.30119013083664
[mm] SIM focus pos	-0.782348	-0.7809083437167272
[mm] SIM defocus	0	0.7524282956875696
[mm] SIM translation stage pos	-233.592463	250.466033080201
[mm] SIM translation stage offset	0	-0.01005468664627074
[s] Observation start time (MET)	238087615.61668	238087614.59171
Observation start date	2005-07-18T15:26:56	2005-07-18T15:26:54
[s] Observation end time (MET)	238110212.767713	238110211.74274
Observation end date	2005-07-18T21:43:33	2005-07-18T21:43:31
Read mode	TIMED	TIMED

Parameter	Planned	Actual
Obspar format version number	7	7
Obspar file type	PREDICTED	ACTUAL
Obspar update status	NONE	UPDATED
On-chip summing requested	N	N
Subarray requested	NONE	NONE
Alternating exposures requested	N	N
[s] Primary exposure time	3.2	3.2

2.3 Star Slots

2.4 FID Slots

A Summary

A.1 Status

V&V Scientist	Jen Lauer
V&V Date (YYYY-MM-DD)	2013.01.23
V&V Edition	1
V&V Disposition and Status	OK
V&V Charge Time	8.2495999692678

A.2 Comments