

V&V Reference Report

L2 ASCDS Version : 7.6.7.1

Observation 59542 - L2 Version 002
Chandra X-Ray Center

L2 Processing Date : Mar 14 2006

Contents

1	Front	2
2	OBI	3
2.1	OBI	3
2.1.1	Images	3
2.1.2	Bias	3
2.1.3	Parameters	4
2.1.4	Events	4
2.2	Compared Parameters	5
2.3	Aspect	6
2.4	Star Slots	8
2.5	FID Slots	8
A	Summary	9
A.1	Status	9
A.2	Comments	9

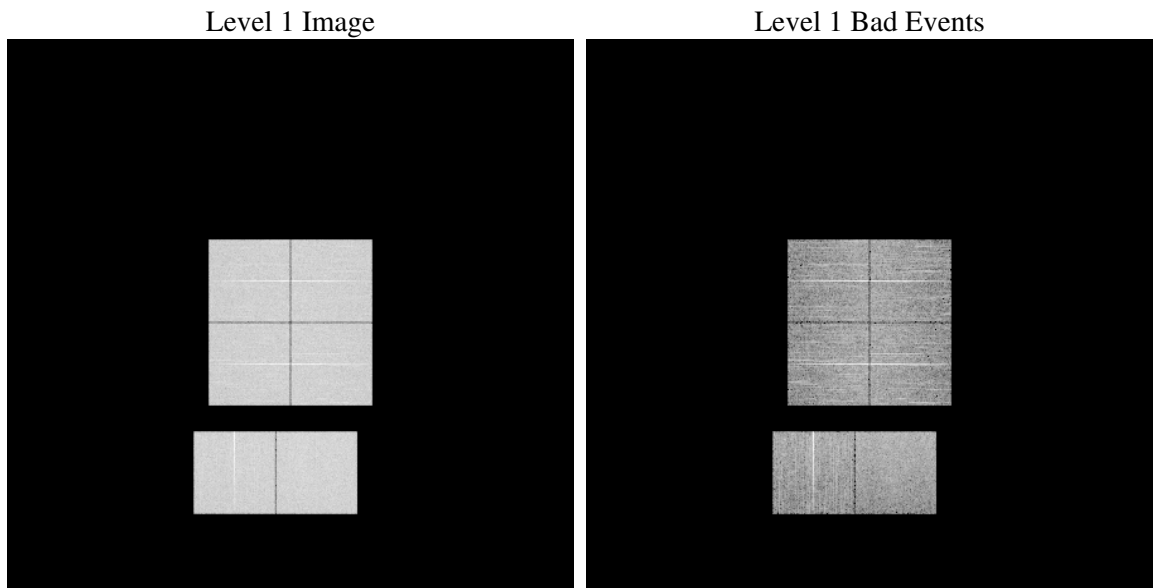
1 Front

seq_num	
obs_id	59542
title	ACIS-012367 diagnostics
observer	CHANDRA engineering request/realtime commanding
object	
dtcycle	0
cycle	P
ra_targ	0.0
dec_targ	0.0
ra_nom	346.97866870296
dec_nom	-22.976539471185
roll_nom	97.301191369606
revision	2
ontime	8249.5999692678
livetime	8145.1385671442
ontime0	8181.5394129157
ontime1	8249.5999692678
ontime2	8094.0330049098
ontime3	8239.8770284653
ontime6	8249.5999692678
ontime7	8249.5999692678
l2events	1091806

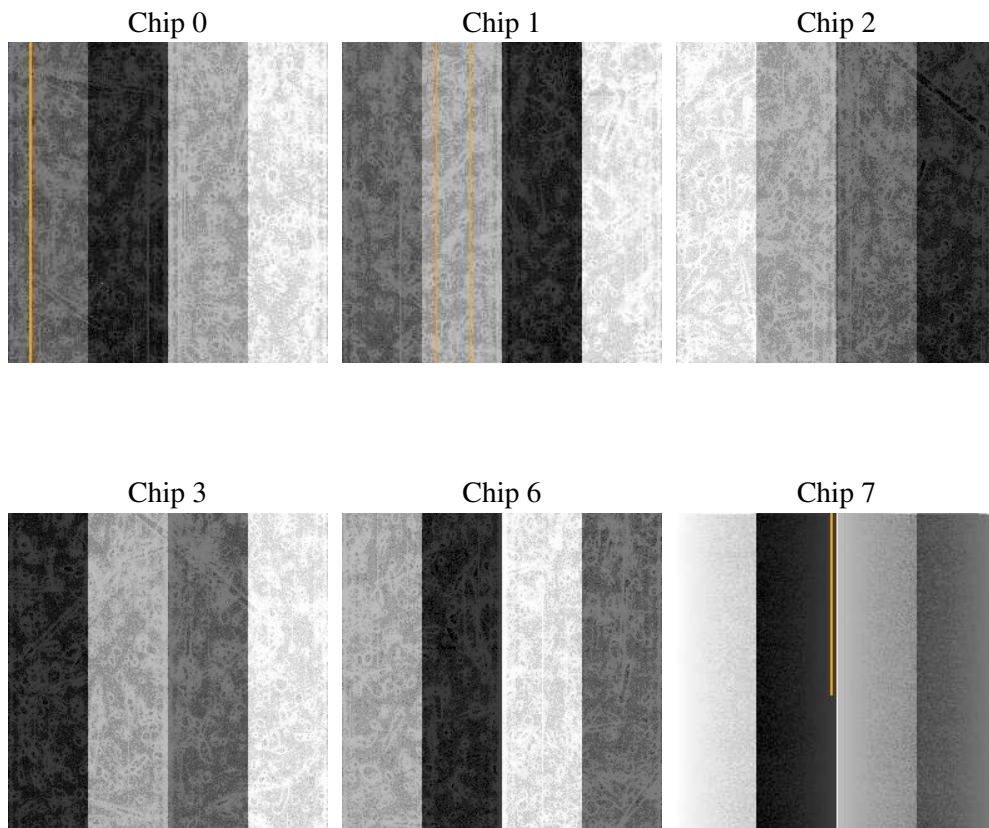
2 OBI

2.1 OBI

2.1.1 Images



2.1.2 Bias



2.1.3 Parameters

obi_num	0
ascdsver	7.6.7.1
caldbver	3.2.1
date	2006-03-14T23:45:42
revision	2

sched_exp_time	0.0
ontime	8280.7754590511
ontime0	8212.714902699
ontime1	8280.7754590511
ontime2	8125.208494693
ontime3	8271.0525182486
ontime6	8280.7754590511
ontime7	8280.7754590511
l1events	1481554

2.1.4 Events

	ccd 0	ccd 1	ccd 2	ccd 3	ccd 6	ccd 7
level 1 events	239314	243565	241626	245802	253385	257862
rejected events	51942	53985	55927	55222	57710	58293
rejected %	21%	22%	23%	22%	22%	22%

	ccd 0	ccd 1	ccd 2	ccd 3	ccd 6	ccd 7
grade 0 events	104091	102391	105219	107872	104596	30890
	43%	42%	43%	43%	41%	11%
grade 1 events	505	463	631	614	448	90
	0%	0%	0%	0%	0%	0%
grade 2 events	32578	35449	30514	32009	36199	63114
	13%	14%	12%	13%	14%	24%
grade 3 events	12118	11943	12090	12584	11649	13247
	5%	4%	5%	5%	4%	5%
grade 4 events	11841	11874	11991	12329	11620	12885
	4%	4%	4%	5%	4%	4%
grade 5 events	3197	3247	2956	3508	3412	6023
	1%	1%	1%	1%	1%	2%
grade 6 events	27555	28696	26668	26489	32378	80174
	11%	11%	11%	10%	12%	31%
grade 7 events	47429	49502	51557	50397	53083	51439
	19%	20%	21%	20%	20%	19%

2.2 Compared Parameters

Parameter	Planned	Actual	Parameter	Planned	Actual
Instrument	ACIS	ACIS	Obspar format version number	6	6
Detector	ACIS-012367	ACIS-012367	Obspar file type	PREDICTED	ACTUAL
Grating	NONE	NONE	Obspar update status	NONE	UPDATED
Data mode	FAINT	FAINT	On-chip summing requested	N	N
Observation mode	SECONDARY	SECONDARY	Subarray requested	NONE	NONE
Pointing RA	0	346.9786687029643	Alternating exposures requested	N	N
Pointing Dec	0	-22.97653947118487	Primary exposure time	3.2	3.2
Pointing Roll	0.0	97.30119136960622			
SIM focus pos (mm)	-0.782348	-0.7809083437167272			
SIM defocus (mm)	0	0.7524282956875696			
SIM translation stage pos (mm)	-233.592463	250.466033080201			
SIM translation stage offset (mm)	0	-0.01005468664627074			
Observation start time	238087615.61668	238087614.59171			
Observation start date	2005-07-18T15:26:56	2005-07-18T15:26:54			
Observation end time	238110212.767713	238110211.74274			
Observation end date	2005-07-18T21:43:33	2005-07-18T21:43:31			
Read mode	TIMED	TIMED			

2.3 Aspect

2.4 Star Slots

2.5 FID Slots

A Summary

A.1 Status

V&V Scientist	Jen Lauer
V&V Date (YYYY-MM-DD)	2006.03.15
V&V Edition	1
V&V Disposition and Status	OK
V&V Charge Time	8.24959996

A.2 Comments

ACIS focal plane temperature is above calibration limits for the entire observation.