

V&V Reference Report

L2 ASCDS Version : 8.5.1.1

Observation 59502 - L2 Version 3
Chandra X-Ray Center

L2 Processing Date : Dec 27 2012

Contents

| | | |
|----------|-------------------------------|----------|
| 1 | Front | 2 |
| 2 | OBI | 3 |
| 2.1 | OBI | 3 |
| 2.1.1 | Images | 3 |
| 2.1.2 | Bias | 3 |
| 2.1.3 | Parameters | 4 |
| 2.1.4 | Events | 4 |
| 2.2 | Compared Parameters | 5 |
| 2.3 | Star Slots | 6 |
| 2.4 | FID Slots | 6 |
| A | Summary | 7 |
| A.1 | Status | 7 |
| A.2 | Comments | 7 |

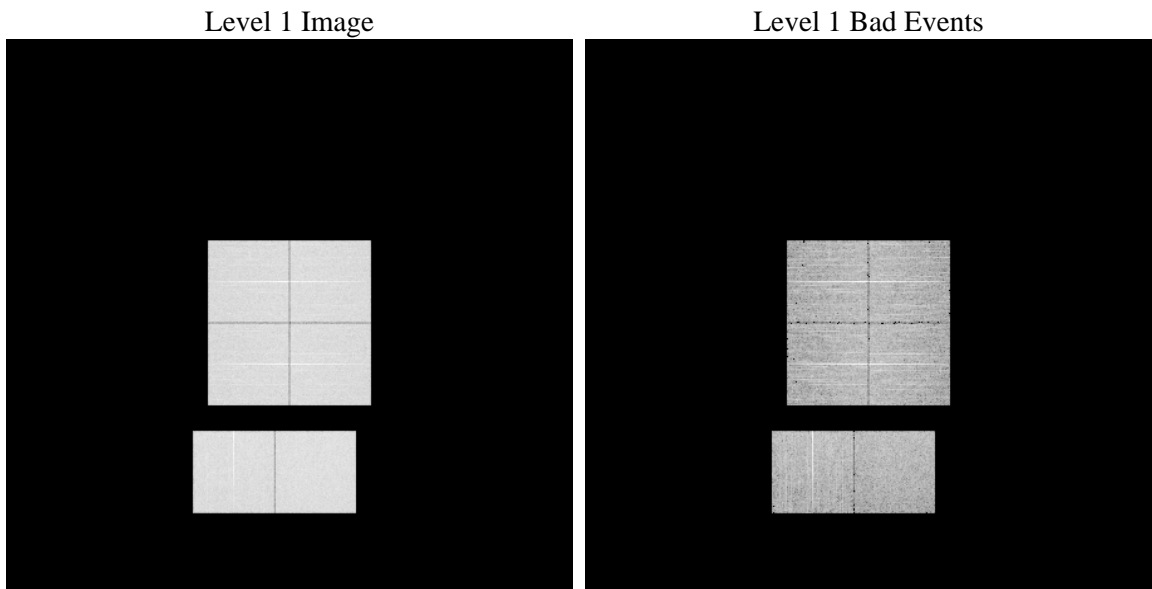
1 Front

| | | |
|----------|---|---|
| seq_num | | Sequence number |
| obs_id | 59502 | Observation id |
| title | ACIS-012367 diagnostics | Proposal title |
| observer | CHANDRA engineering request/realtime commanding | Principal investig |
| object | | Source name |
| dtcycle | 0 | |
| cycle | P | events from which exps? Prim/Second/Both |
| ra_targ | 0.0 | Observer's specified target RA [deg] |
| dec_targ | 0.0 | Observer's specified target Dec [deg] |
| ra_nom | 2.9780023535699 | Nominal RA [deg] |
| dec_nom | -3.9816420801689 | Nominal Dec [deg] |
| roll_nom | 107.28636386302 | Nominal Roll [deg] |
| revision | 3 | Processing version of data |
| ontime | 7804.1883122921 | Sum of GTIs [s] |
| livetime | 7705.3669807638 | Livetime [s] |
| ontime0 | 7570.7962309718 | Sum of GTIs [s] |
| ontime1 | 7758.7322988212 | Sum of GTIs [s] |
| ontime2 | 7405.4238365591 | Sum of GTIs [s] |
| ontime3 | 7600.1762996912 | Sum of GTIs [s] |
| ontime6 | 7804.0241523087 | Sum of GTIs [s] |
| ontime7 | 7804.1883122921 | Sum of GTIs [s] |
| l2events | 1028075 | Number of level 2 events |

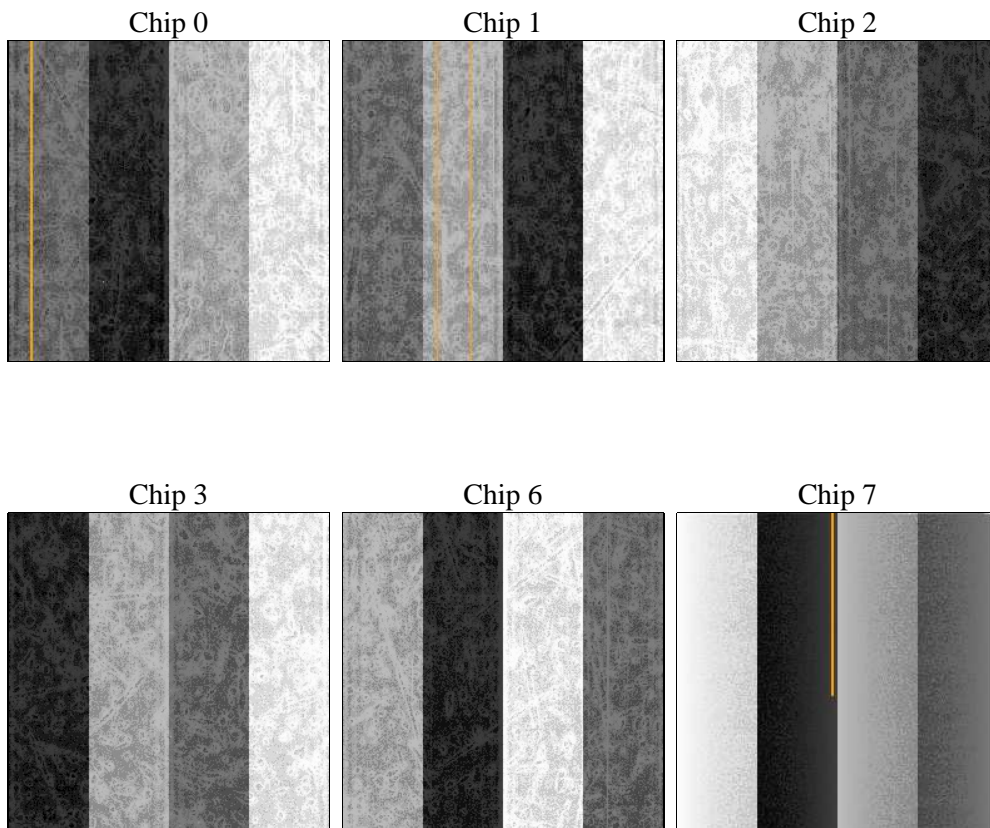
2 OBI

2.1 OBI

2.1.1 Images



2.1.2 Bias



2.1.3 Parameters

| | | | | | |
|----------|---------------------|--------------------------------|----------------|-----------------|---|
| obi_num | 0 | Obi number | sched_exp_time | 0.0 | [s] Scheduled observation exposure time |
| ascdsver | 8.5.1.1 | Processing system revision | ontime | 7804.1883122921 | Sum of GTIs [s] |
| caldsver | 4.5.5 | | ontime0 | 7570.7962309718 | Sum of GTIs [s] |
| date | 2012-12-27T22:05:23 | Date and time of file creation | ontime1 | 7758.7322988212 | Sum of GTIs [s] |
| revision | 3 | Processing version of data | ontime2 | 7405.4238365591 | Sum of GTIs [s] |
| | | | ontime3 | 7600.1762996912 | Sum of GTIs [s] |
| | | | ontime6 | 7804.0241523087 | Sum of GTIs [s] |
| | | | ontime7 | 7804.1883122921 | Sum of GTIs [s] |
| | | | l1events | 1398873 | Number of level 1 events |

2.1.4 Events

| | ccd 0 | ccd 1 | ccd 2 | ccd 3 | ccd 6 | ccd 7 | | ccd 0 | ccd 1 | ccd 2 | ccd 3 | ccd 6 | ccd 7 |
|-----------------|--------|--------|--------|--------|--------|--------|----------------|-------|-------|-------|-------|--------|-------|
| level 1 events | 223880 | 229188 | 224373 | 229539 | 242555 | 249338 | grade 0 events | 93667 | 96198 | 94827 | 98066 | 100546 | 47650 |
| rejected events | 52465 | 52171 | 54459 | 54420 | 56384 | 47633 | | 41% | 41% | 42% | 42% | 41% | 19% |
| rejected % | 23% | 22% | 24% | 23% | 23% | 19% | grade 1 events | 526 | 490 | 606 | 616 | 495 | 151 |
| | | | | | | | | 0% | 0% | 0% | 0% | 0% | 0% |
| | | | | | | | grade 2 events | 29783 | 31773 | 28537 | 29739 | 32323 | 44512 |
| | | | | | | | | 13% | 13% | 12% | 12% | 13% | 17% |
| | | | | | | | grade 3 events | 11330 | 11400 | 11105 | 11609 | 11463 | 20113 |
| | | | | | | | | 5% | 4% | 4% | 5% | 4% | 8% |
| | | | | | | | grade 4 events | 11122 | 11349 | 11133 | 11481 | 11802 | 20122 |
| | | | | | | | | 4% | 4% | 4% | 5% | 4% | 8% |
| | | | | | | | grade 5 events | 3093 | 3247 | 2923 | 3373 | 3577 | 8443 |
| | | | | | | | | 1% | 1% | 1% | 1% | 1% | 3% |
| | | | | | | | grade 6 events | 25513 | 26297 | 24312 | 24224 | 30037 | 69308 |
| | | | | | | | | 11% | 11% | 10% | 10% | 12% | 27% |
| | | | | | | | grade 7 events | 48846 | 48434 | 50930 | 50431 | 52312 | 39039 |
| | | | | | | | | 21% | 21% | 22% | 21% | 21% | 15% |

2.2 Compared Parameters

| Parameter | Planned | Actual |
|-----------------------------------|---------------------|----------------------|
| Instrument | ACIS | ACIS |
| Detector | ACIS-012367 | ACIS-012367 |
| Grating | NONE | NONE |
| Data mode | FAINT | FAINT |
| Observation mode | SECONDARY | SECONDARY |
| [deg] Pointing RA | 0 | 2.978002353569877 |
| [deg] Pointing Dec | 0 | -3.981642080168877 |
| [deg] Pointing Roll | 0.0 | 107.2863638630179 |
| [mm] SIM focus pos | -0.782348 | -0.6828225247311905 |
| [mm] SIM defocus | 0 | 0.8505141146731063 |
| [mm] SIM translation stage pos | -233.592463 | 250.466033080201 |
| [mm] SIM translation stage offset | 0 | -0.01005468664627074 |
| [s] Observation start time (MET) | 240564649.180172 | 240564648.15517 |
| Observation start date | 2005-08-16T07:30:49 | 2005-08-16T07:30:48 |
| [s] Observation end time (MET) | 240580403.430894 | 240580402.4059 |
| Observation end date | 2005-08-16T11:53:23 | 2005-08-16T11:53:22 |
| Read mode | TIMED | TIMED |

| Parameter | Planned | Actual |
|---------------------------------|-----------|---------|
| Obspar format version number | 7 | 7 |
| Obspar file type | PREDICTED | ACTUAL |
| Obspar update status | NONE | UPDATED |
| On-chip summing requested | N | N |
| Subarray requested | NONE | NONE |
| Alternating exposures requested | N | N |
| [s] Primary exposure time | 3.2 | 3.2 |

2.3 Star Slots

2.4 FID Slots

A Summary

A.1 Status

| | |
|----------------------------|-----------------|
| V&V Scientist | Jen Lauer |
| V&V Date (YYYY-MM-DD) | 2013.01.24 |
| V&V Edition | 1 |
| V&V Disposition and Status | OK |
| V&V Charge Time | 7.8041883122921 |

A.2 Comments