

V&V Reference Report

L2 ASCDS Version : 7.6.7.1

Observation 5942 - L2 Version 002
Chandra X-Ray Center

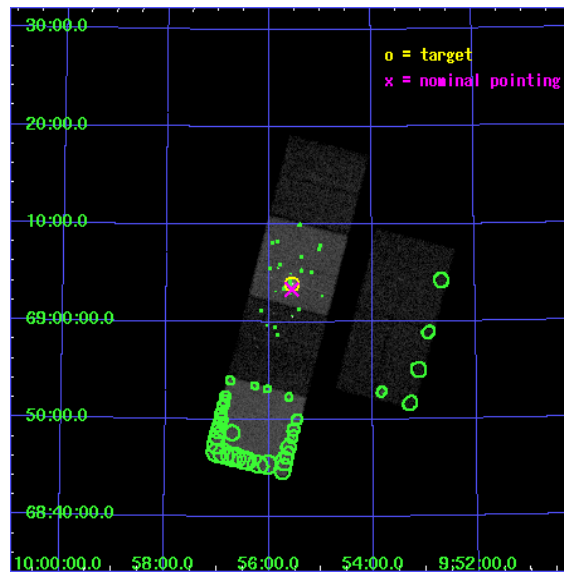
L2 Processing Date : Mar 10 2006

Contents

1	Front	2
2	OBI	3
2.1	OBI	3
2.1.1	Images	3
2.1.2	Bias	3
2.1.3	Parameters	4
2.1.4	Events	4
2.2	Compared Parameters	5
2.3	Aspect	6
2.4	Star Slots	9
2.4.1	Slot 3	9
2.4.2	Slot 4	10
2.4.3	Slot 5	11
2.4.4	Slot 6	12
2.4.5	Slot 7	13
2.5	FID Slots	14
2.5.1	Slot 0	14
2.5.2	Slot 1	15
2.5.3	Slot 2	16
3	Point Sources	17
A	Summary	18
A.1	Status	18
A.2	Comments	18

1 Front

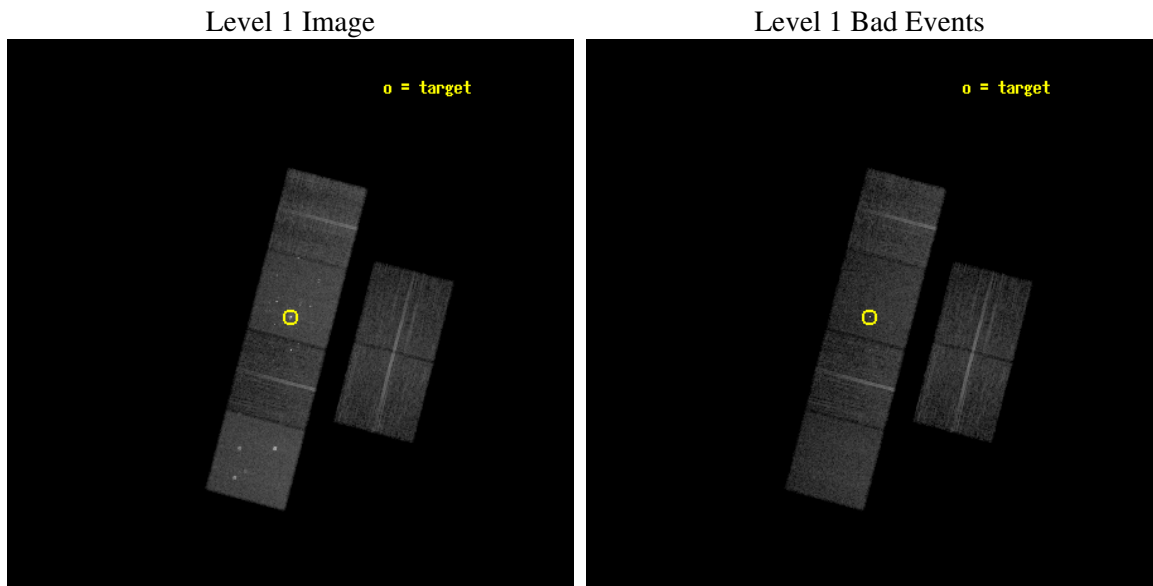
seq_num	600461
obs_id	5942
title	An Unprecedented View of a Galaxy's Dynamic X-ray Source Population
observer	Dr. David Pooley
object	M81
dtcycle	0
cycle	P
ra_targ	148.888333
dec_targ	69.065306
ra_nom	148.89047779429
dec_nom	69.055709839513
roll_nom	284.60351076821
revision	2
ontime	12105.599954903
livetime	11952.311559157
ontime2	12105.599954903
ontime3	12105.599954903
ontime5	12105.599954903
ontime6	12105.599954903
ontime7	12105.599954903
ontime8	12105.599954903
l2events	152609



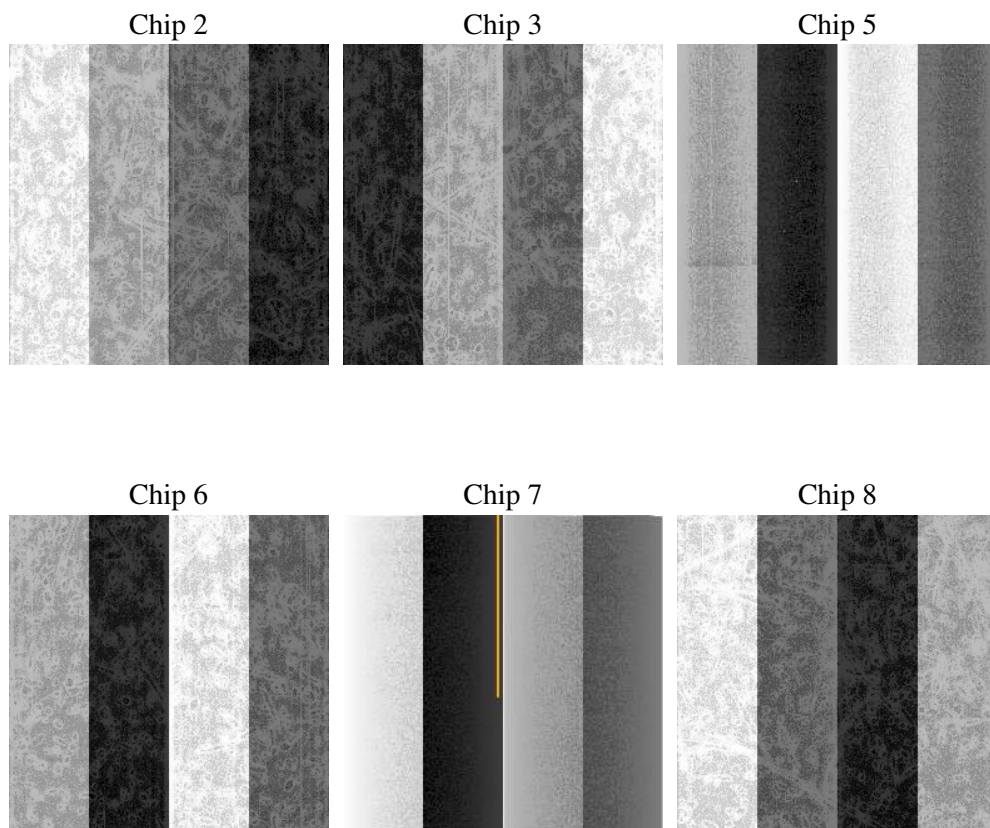
2 OBI

2.1 OBI

2.1.1 Images



2.1.2 Bias



2.1.3 Parameters

obi_num	0
ascdsver	7.6.7.1
caldsver	3.2.1
date	2006-03-10T12:54:38
revision	2

sched_exp_time	12000.000000
ontime	12111.622182906
ontime2	12111.622162998
ontime3	12111.622182906
ontime5	12111.622182906
ontime6	12111.622182906
ontime7	12111.622182906
ontime8	12111.622162998
l1events	657236

2.1.4 Events

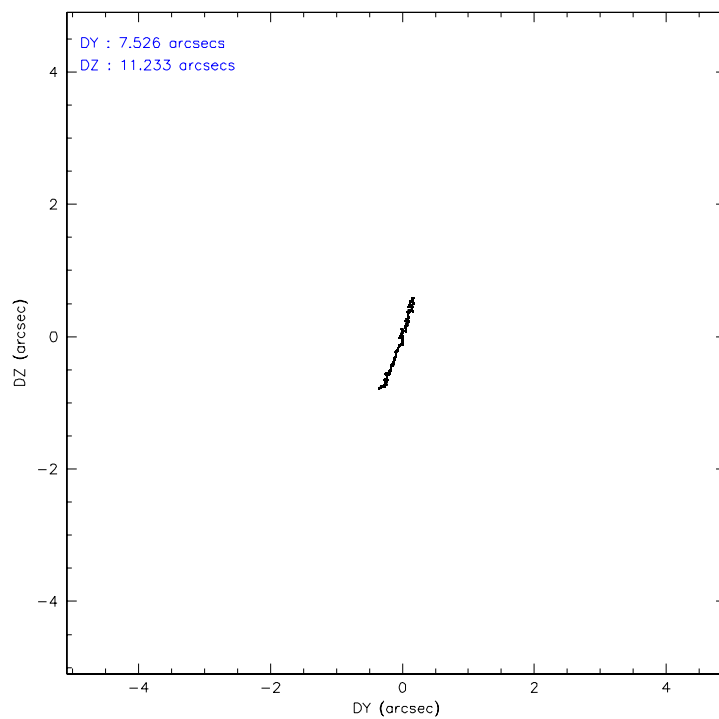
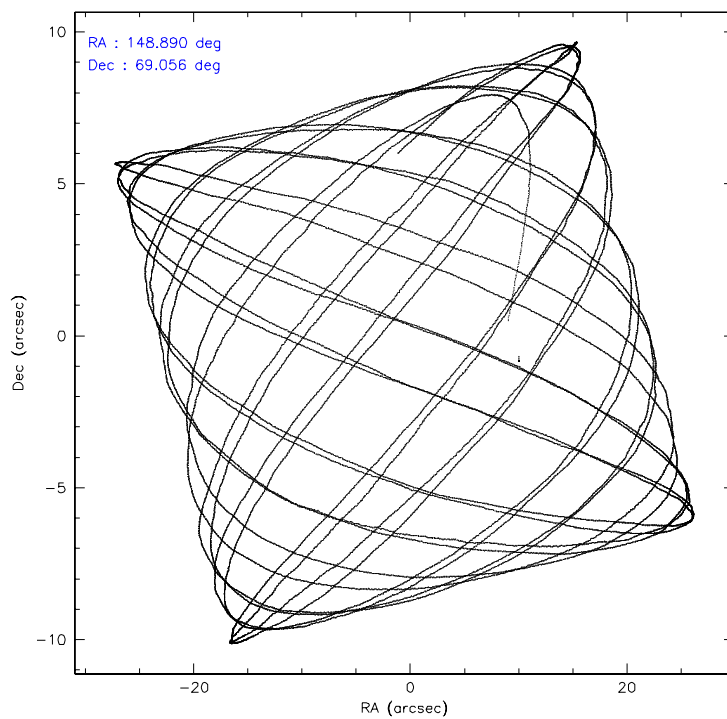
	ccd 2	ccd 3	ccd 5	ccd 6	ccd 7	ccd 8
level 1 events	92158	84676	137604	91676	134559	116563
rejected events	81025	74058	74794	78825	78861	89716
rejected %	87%	87%	54%	85%	58%	76%

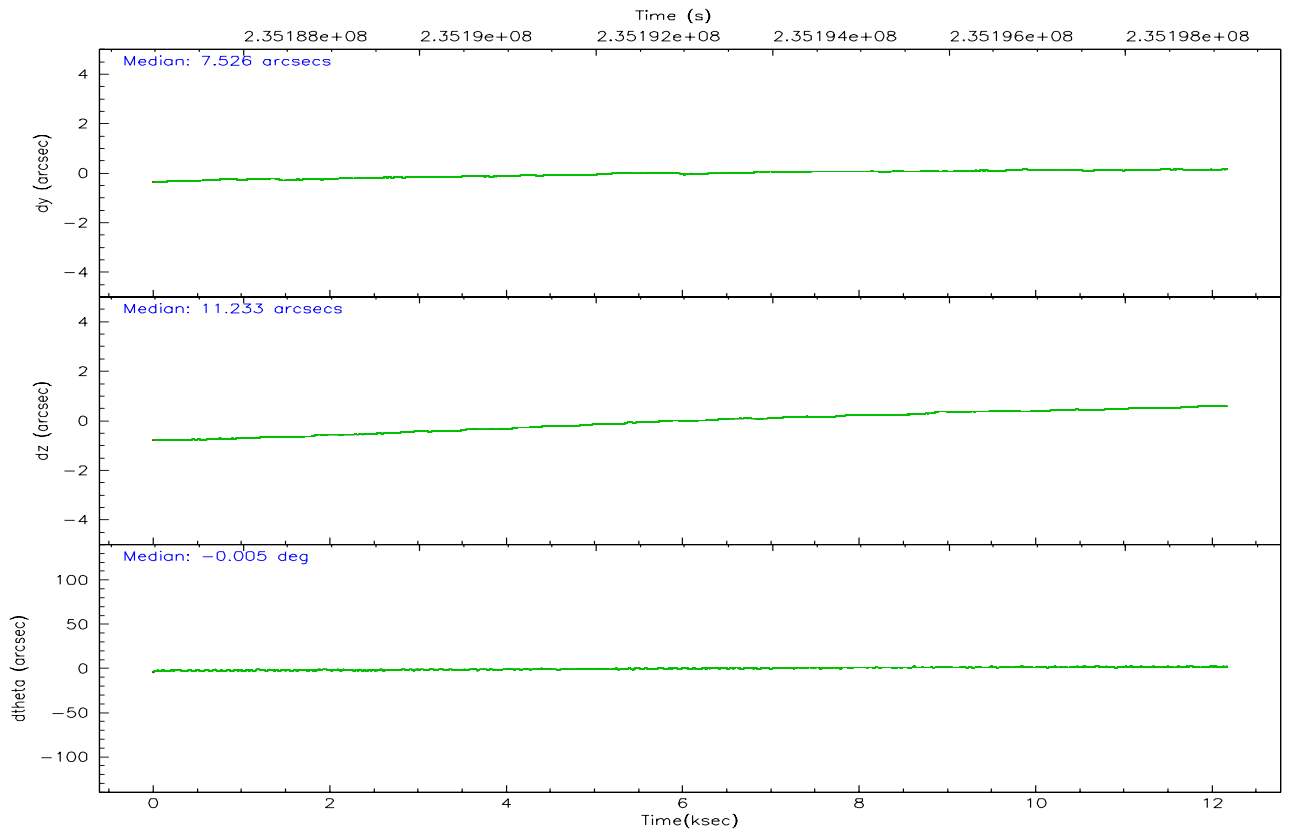
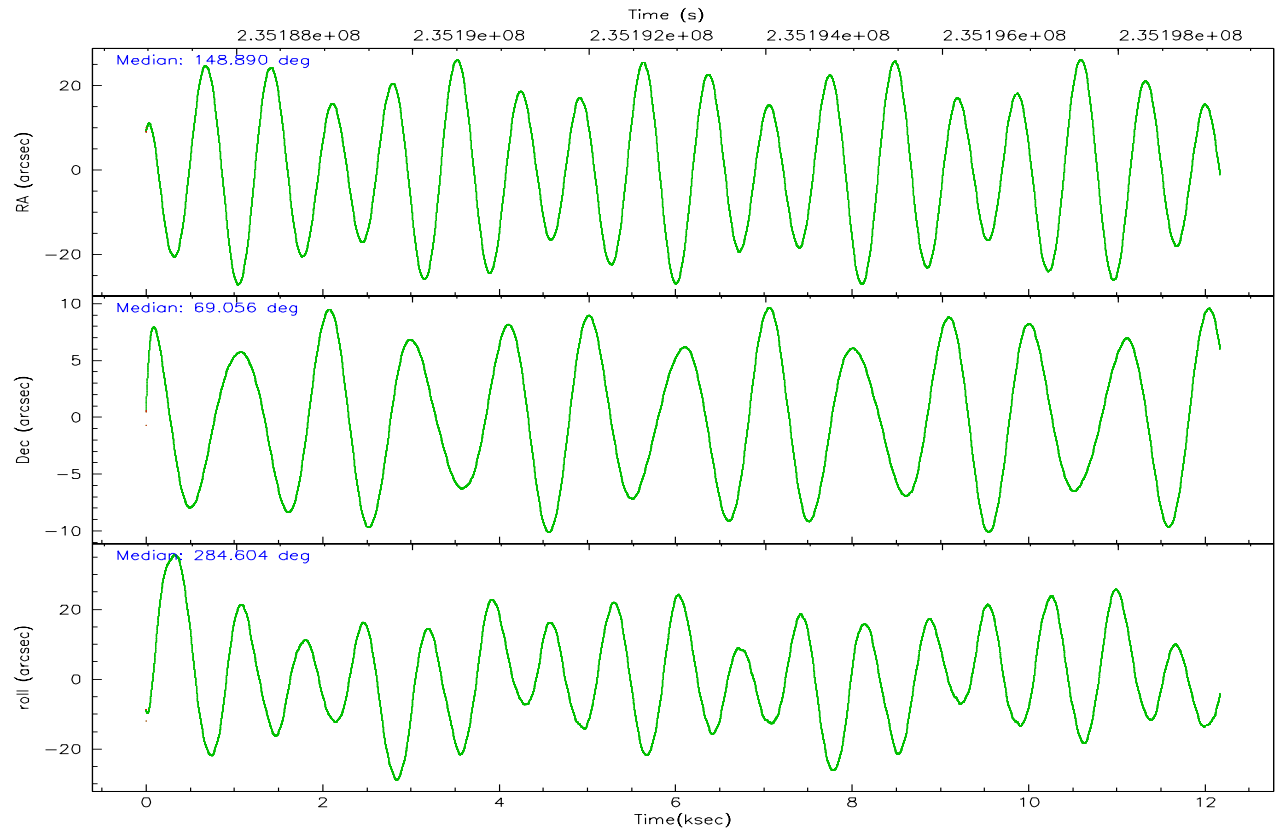
	ccd 2	ccd 3	ccd 5	ccd 6	ccd 7	ccd 8
grade 0 events	5023	4593	6864	5808	4971	8663
	5%	5%	4%	6%	3%	7%
grade 1 events	59	57	187	65	158	83
	0%	0%	0%	0%	0%	0%
grade 2 events	2237	2065	19387	2601	13920	5777
	2%	2%	14%	2%	10%	4%
grade 3 events	1031	1074	1277	1120	3363	2962
	1%	1%	0%	1%	2%	2%
grade 4 events	1063	1022	1244	1091	3146	2878
	1%	1%	0%	1%	2%	2%
grade 5 events	3632	4031	6529	4233	8470	5598
	3%	4%	4%	4%	6%	4%
grade 6 events	1783	1871	34066	2239	30329	6570
	1%	2%	24%	2%	22%	5%
grade 7 events	77330	69963	68050	74519	70202	84032
	83%	82%	49%	81%	52%	72%

2.2 Compared Parameters

Parameter	Planned	Actual	Parameter	Planned	Actual
Instrument	ACIS	ACIS	Obspar format version number	6	6
Detector	ACIS-235678	ACIS-235678	Obspar file type	PREDICTED	ACTUAL
Grating	NONE	NONE	Obspar update status	NONE	UPDATED
Data mode	FAINT	FAINT	On-chip summing requested	N	N
Observation mode	POINTING	POINTING	Subarray requested	NONE	NONE
Pointing RA	148.836175	148.890477794285	Alternating exposures requested	N	N
Pointing Dec	69.074779	69.05570983951274	Primary exposure time	0.000000	3.2
Pointing Roll	284.497608	284.6035107682139			
SIM focus pos (mm)	-0.684267	-0.6828225247311905			
SIM defocus (mm)	0	0.001444936568705701			
SIM translation stage pos (mm)	-190.132523	-190.1400660498719			
SIM translation stage offset (mm)	0	0.00754346686406393			
Observation start time	235187148.184000	235186113.64656			
Observation start date	2005-06-15T01:44:44	2005-06-15T01:28:33			
Observation end time	235199148.184000	235200020.3347			
Observation end date	2005-06-15T05:04:44	2005-06-15T05:20:20			
Read mode	TIMED	TIMED			

2.3 Aspect



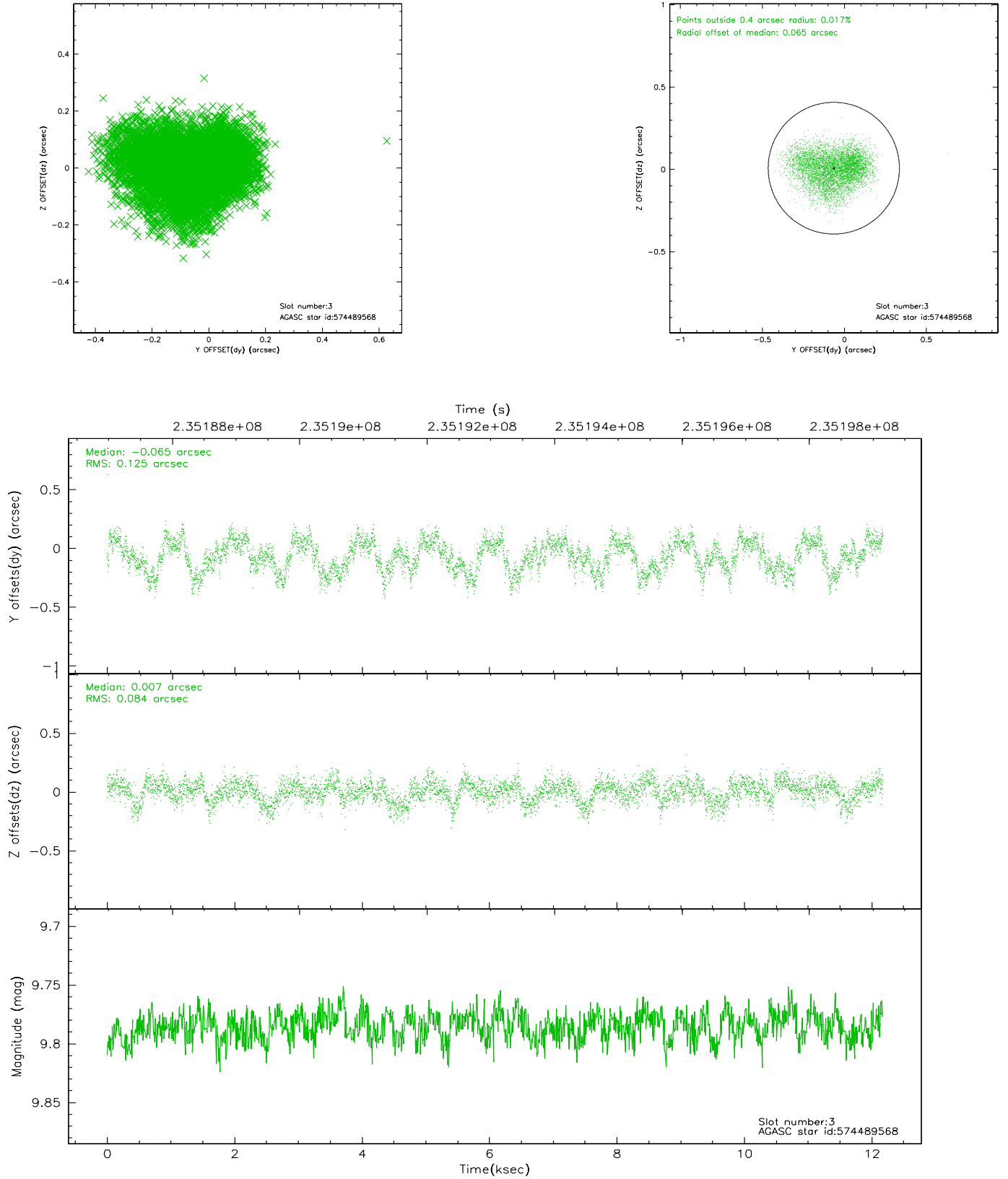


Slot Statistics

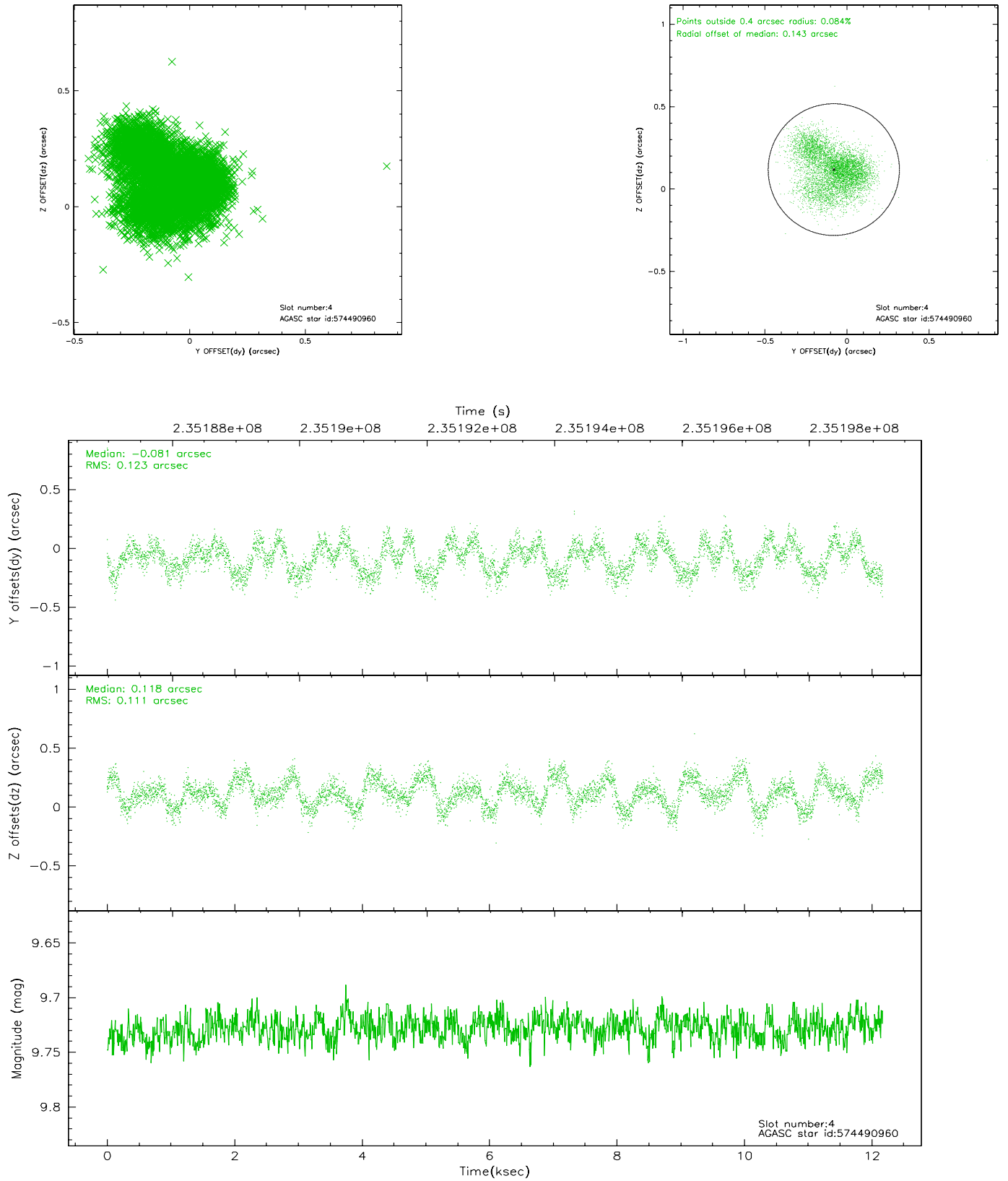
slot	status	id	mag	n_pts	med_dy	med_dz	dr1	dr2	ra	dec	mean_y	mean_z
0	FID	ACIS-S-1	7.18	2970	0.039	-0.062	0.015	0.028	0.000000	0.000000	935.81	-1728.15
1	FID	ACIS-S-5	7.23	2969	-0.046	0.027	0.013	0.018	0.000000	0.000000	-1813.03	169.09
2	FID	ACIS-S-6	7.35	2970	-0.010	0.048	0.017	0.025	0.000000	0.000000	400.89	813.51
3	GUIDE	574489568	9.79	5935	-0.065	0.007	0.165	0.250	147.223974	69.438157	-1802.34	-1638.88
4	GUIDE	574490960	9.73	5931	-0.081	0.118	0.182	0.272	148.185918	69.658768	-2243.08	-260.46
5	GUIDE	574491280	9.34	5936	-0.119	-0.125	0.111	0.177	148.611567	69.450135	-1379.45	62.94
6	GUIDE	574497600	10.47	5874	0.107	0.128	0.271	0.446	147.824120	68.451903	1825.82	-1853.98
7	GUIDE	574496312	10.25	5918	0.174	-0.106	0.251	0.419	149.547505	68.718299	1470.87	579.77

2.4 Star Slots

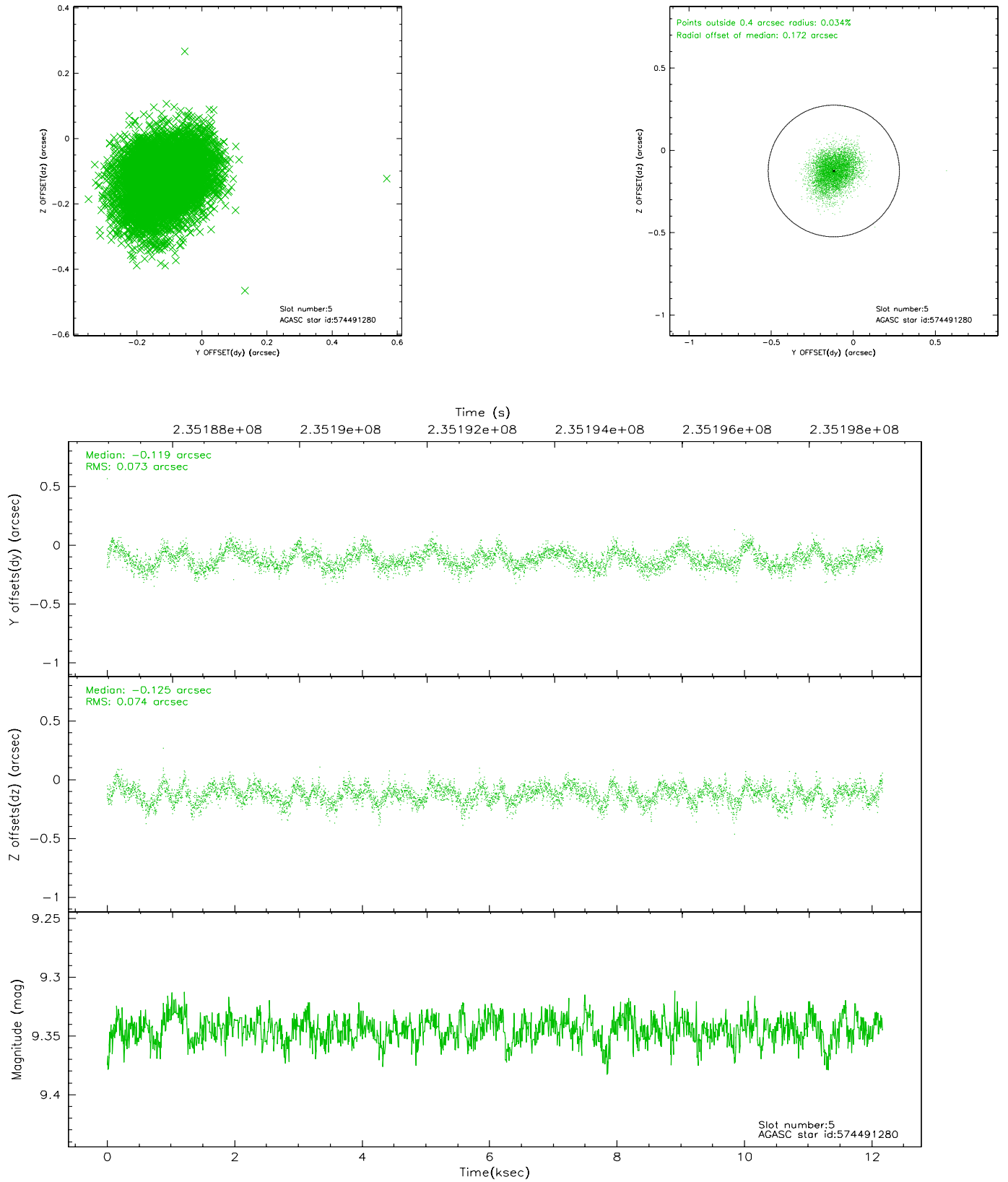
2.4.1 Slot 3



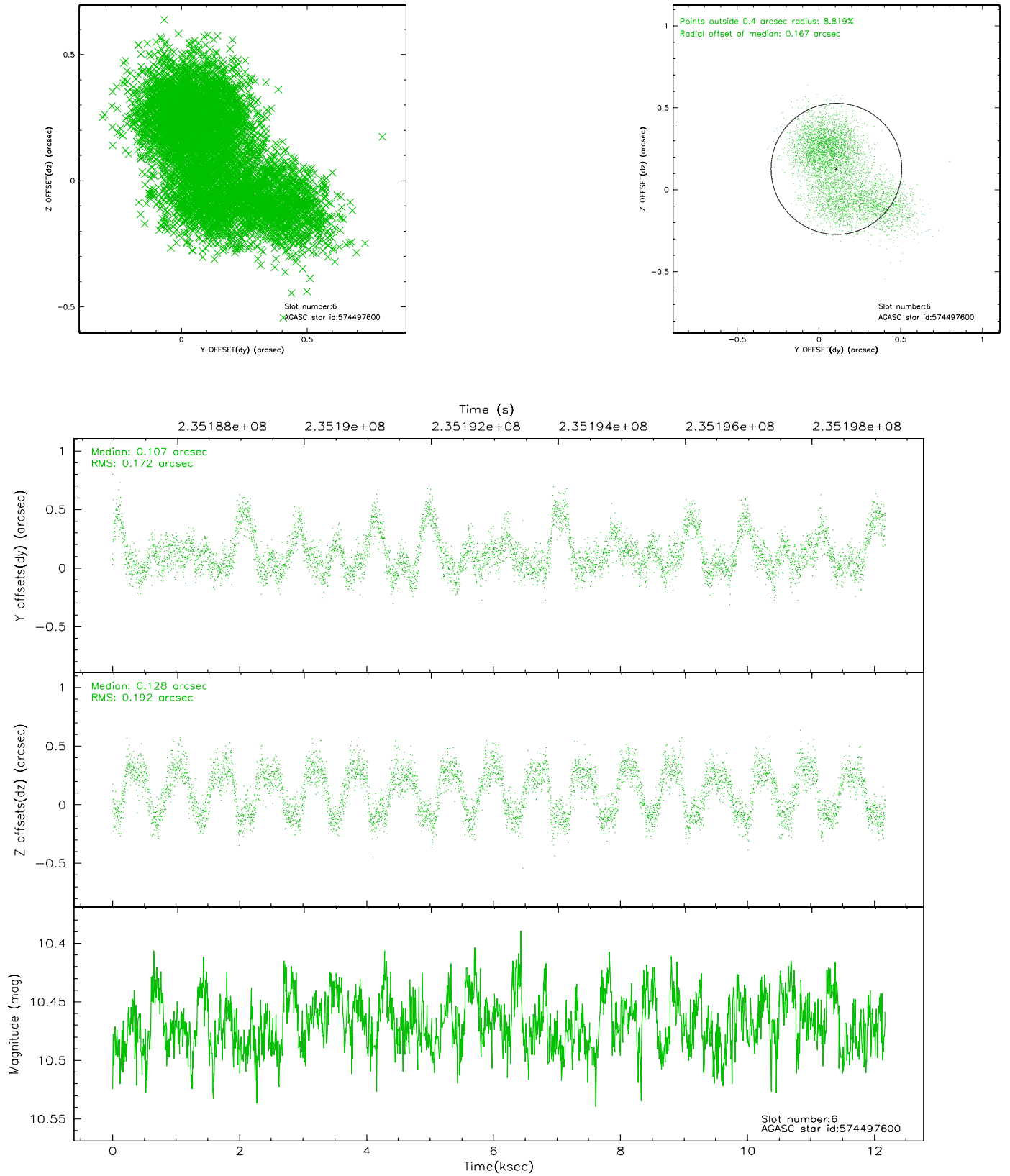
2.4.2 Slot 4



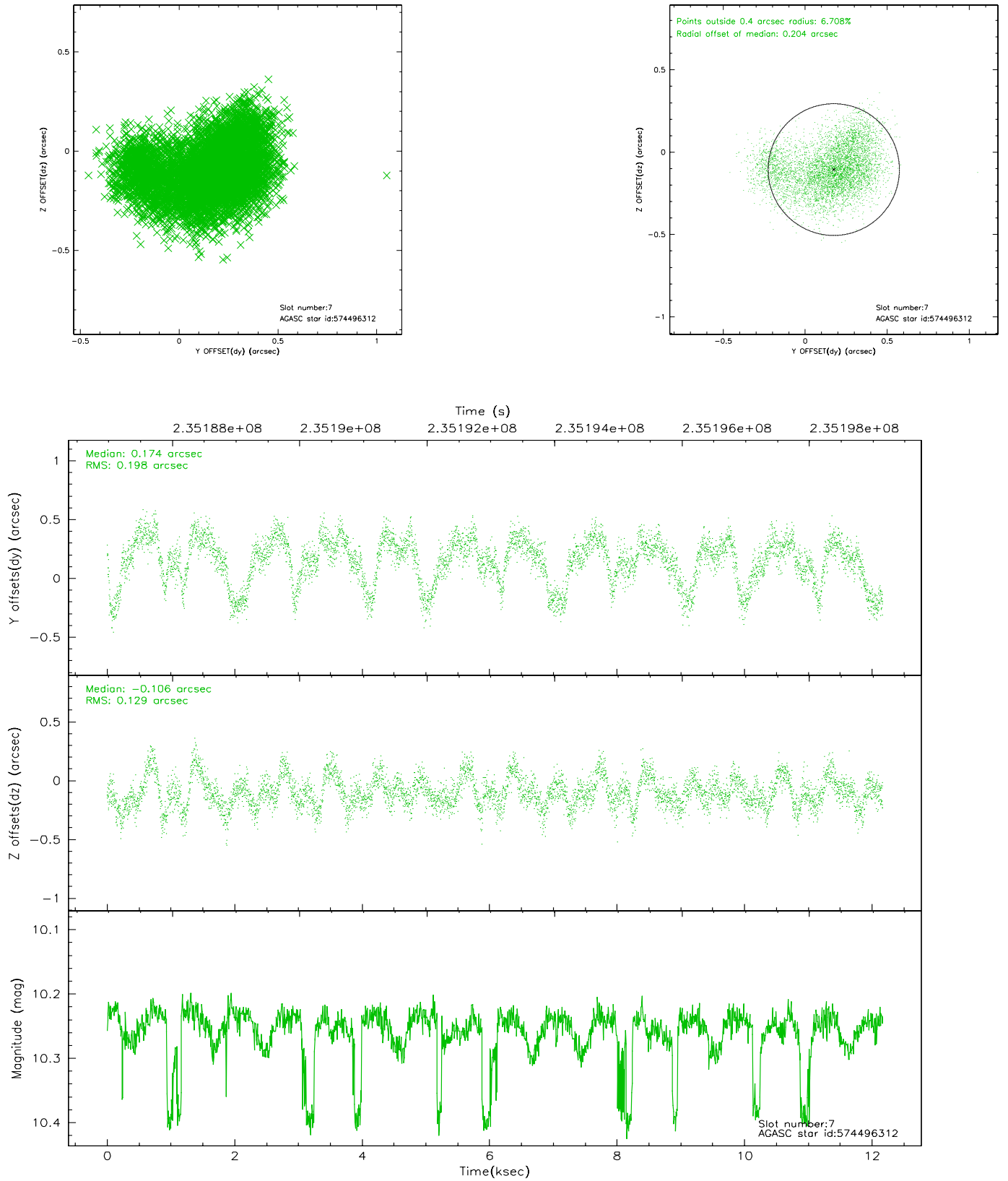
2.4.3 Slot 5



2.4.4 Slot 6

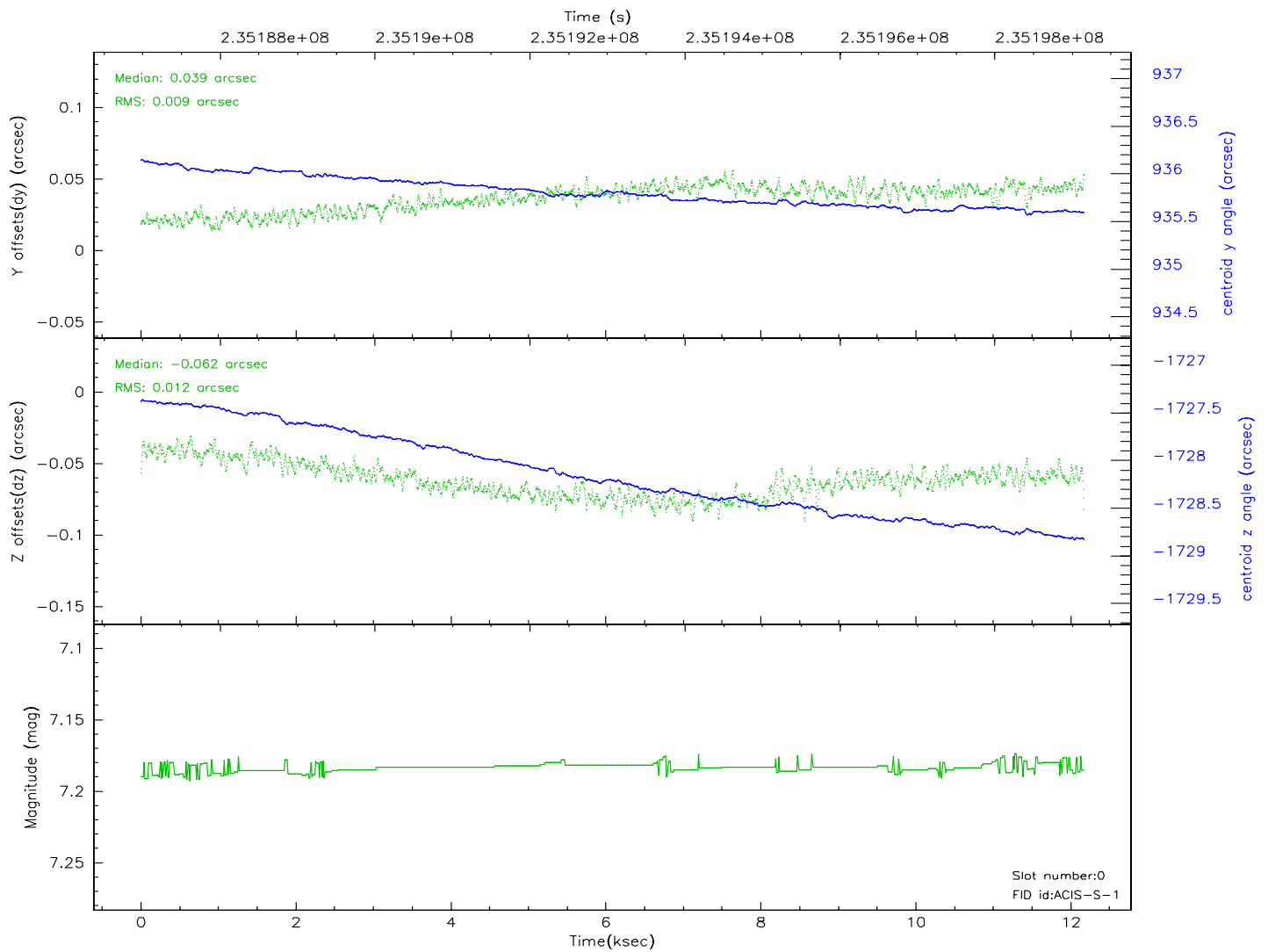
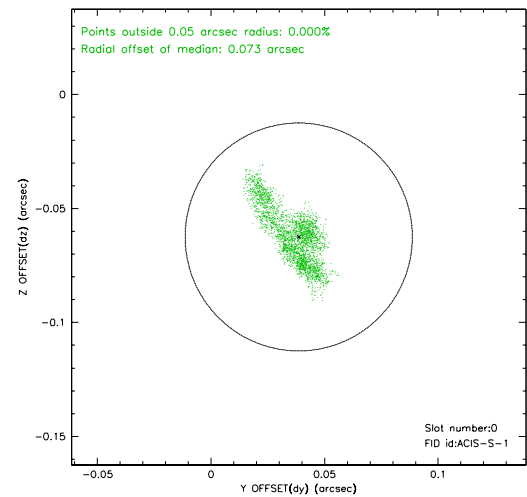
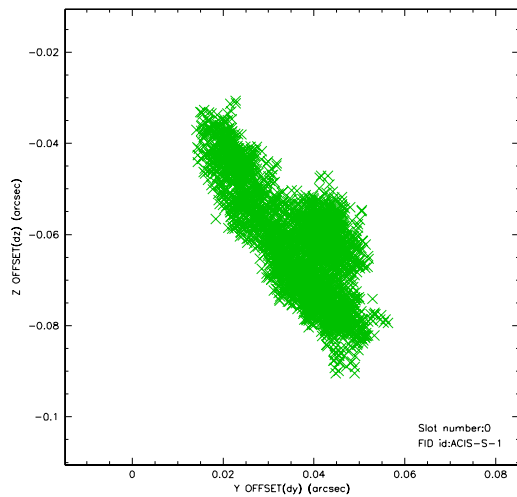


2.4.5 Slot 7

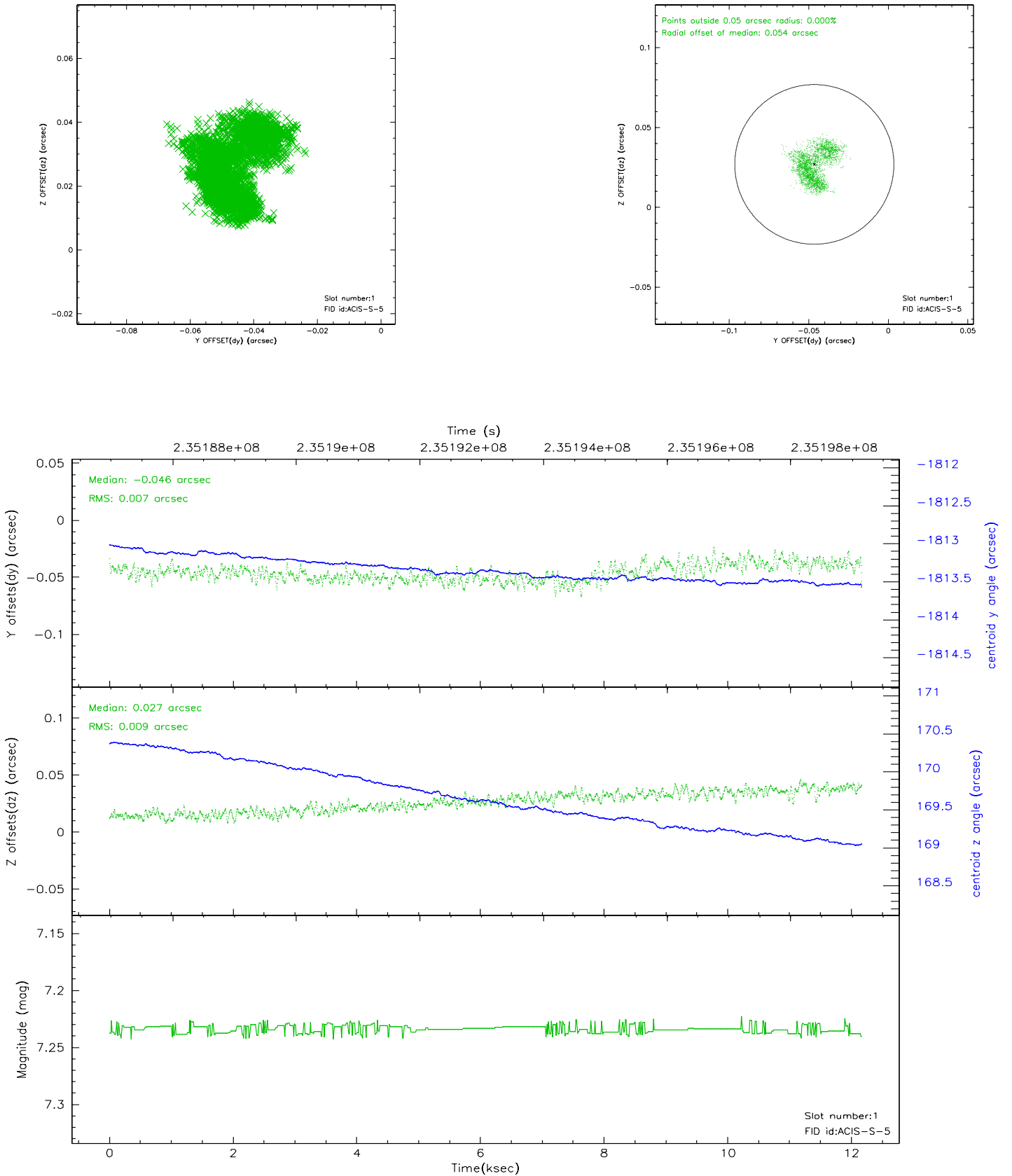


2.5 FID Slots

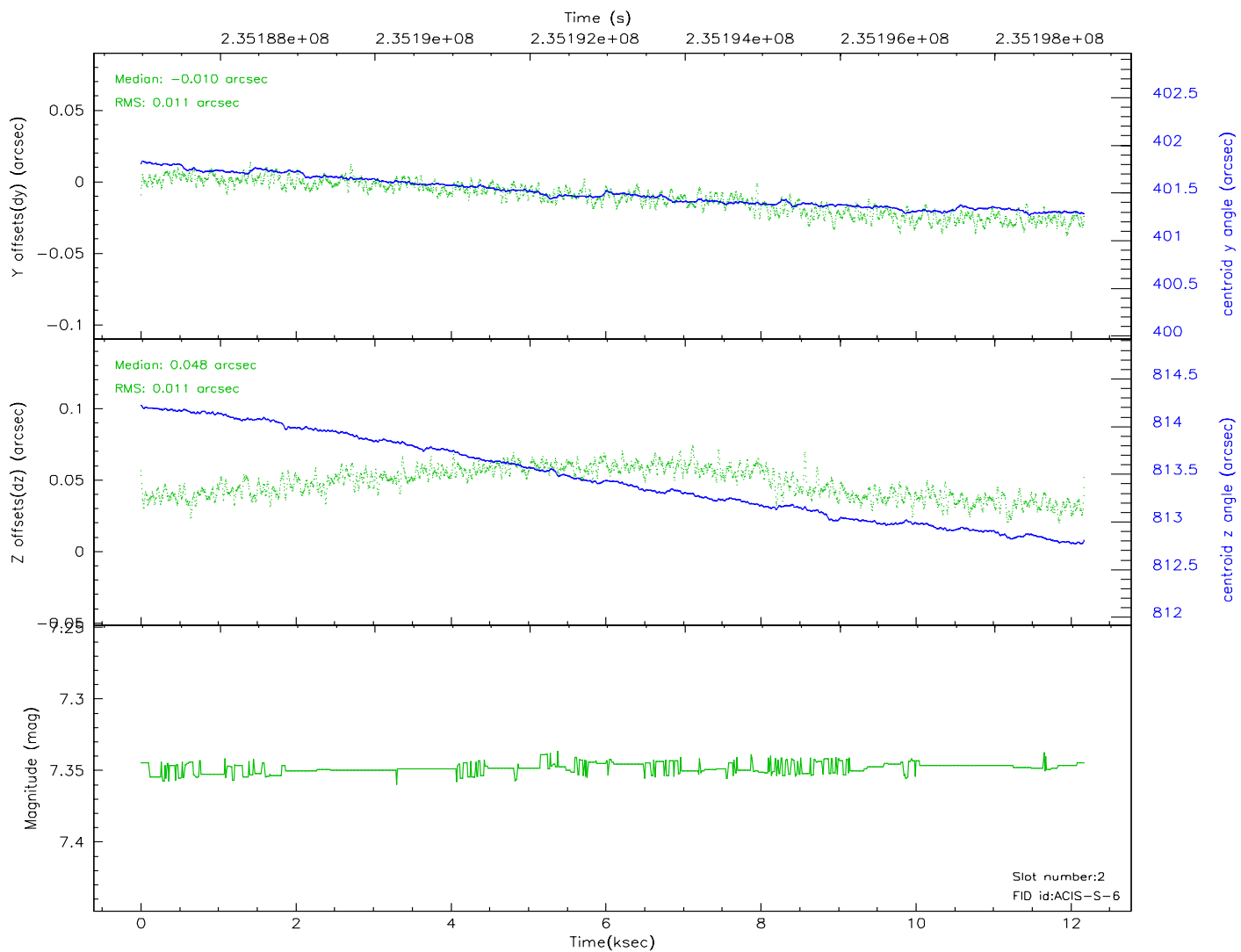
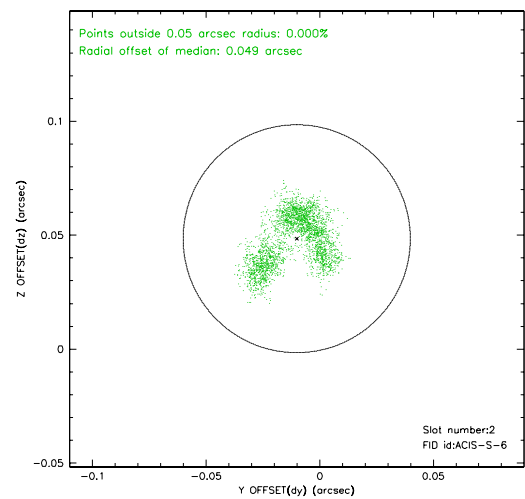
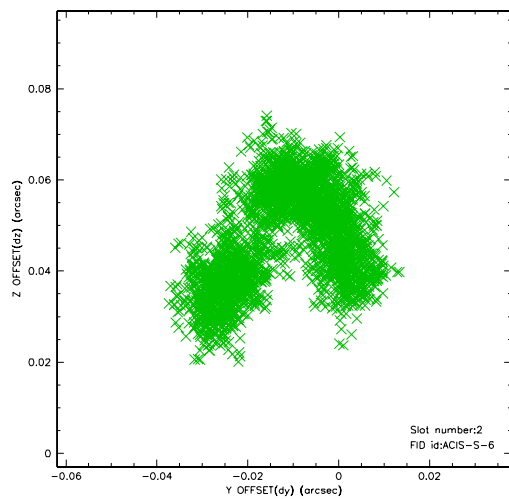
2.5.1 Slot 0



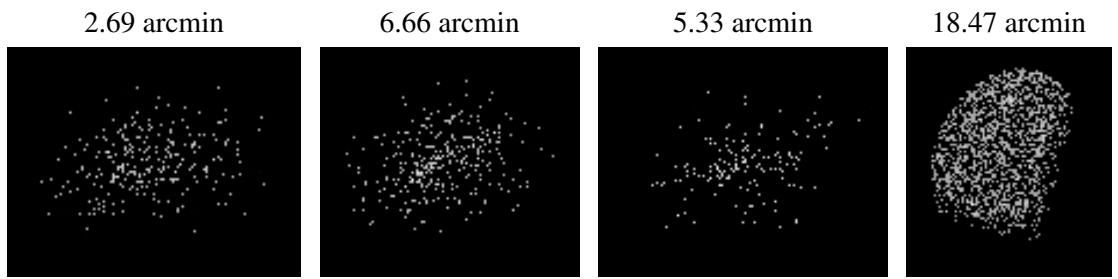
2.5.2 Slot 1



2.5.3 Slot 2



3 Point Sources



A Summary

A.1 Status

V&V Scientist	Jen Lauer
V&V Date (YYYY-MM-DD)	2006.03.10
V&V Edition	1
V&V Disposition and Status	OK
V&V Charge Time	12.10559

A.2 Comments

Roll preference met. Monitor constraint met.