

V&V Reference Report

L2 ASCDS Version : 8.5.1.1

Observation 5892 - L2 Version 3
Chandra X-Ray Center

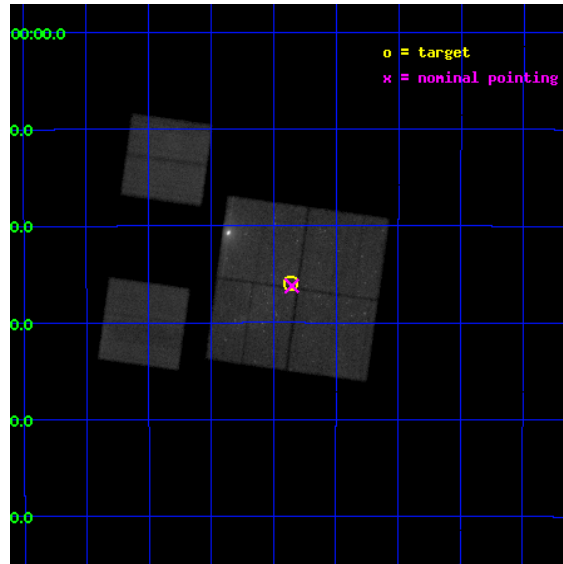
L2 Processing Date : Dec 26 2012

Contents

1	Front	2
2	OBI	3
2.1	OBI	3
2.1.1	Images	3
2.1.2	Bias	3
2.1.3	Parameters	4
2.1.4	Events	4
2.2	Compared Parameters	5
2.3	Aspect	6
2.4	Star Slots	9
2.4.1	Slot 3	9
2.4.2	Slot 4	10
2.4.3	Slot 5	11
2.4.4	Slot 6	12
2.4.5	Slot 7	13
2.5	FID Slots	14
2.5.1	Slot 0	14
2.5.2	Slot 1	15
2.5.3	Slot 2	16
A	Summary	17
A.1	Status	17
A.2	Comments	17

1 Front

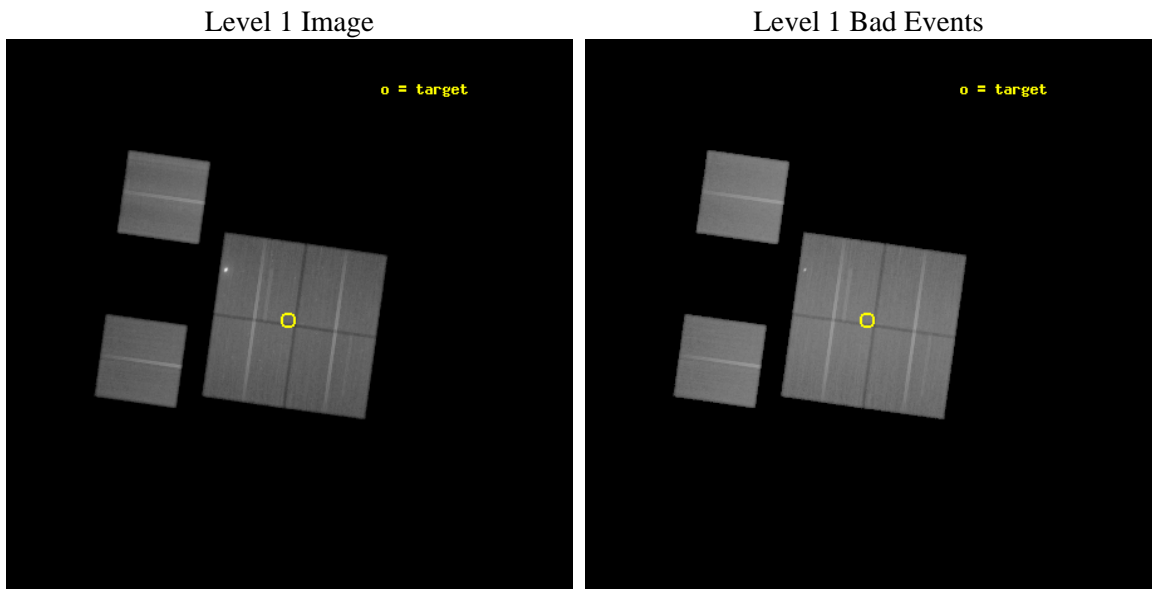
seq_num	900392	Sequence number
obs_id	5892	Observation id
title	Sgr C: A New X-Ray Reflection Nebula?	Proposal title
observer	Dr. Hiroshi Murakami	Principal investigator
object	Sgr C	Source name
dtcycle	0	
cycle	P	events from which exps? Prim/Second/Both
ra_targ	266.08957	Observer's specified target RA [deg]
dec_targ	-29.43218	Observer's specified target Dec [deg]
ra_nom	266.08819817896	Nominal RA [deg]
dec_nom	-29.436673609748	Nominal Dec [deg]
roll_nom	277.98785201721	Nominal Roll [deg]
revision	3	Processing version of data
ontime	99164.799630582	Sum of GTIs [s]
livetime	97909.115227786	Livetime [s]
ontime0	99164.799630582	Sum of GTIs [s]
ontime1	99164.799630582	Sum of GTIs [s]
ontime2	99155.076639771	Sum of GTIs [s]
ontime3	99164.799630582	Sum of GTIs [s]
ontime6	99161.558600456	Sum of GTIs [s]
ontime8	99155.07675916	Sum of GTIs [s]
l2events	777141	Number of level 2 events



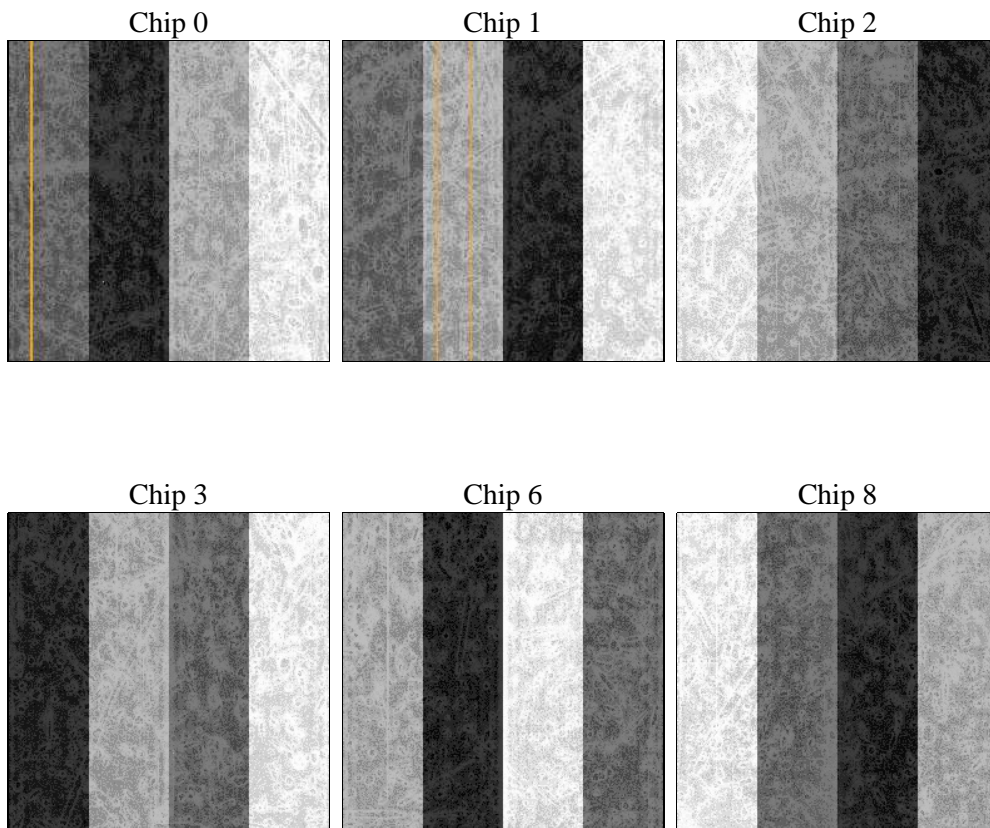
2 OBI

2.1 OBI

2.1.1 Images



2.1.2 Bias



2.1.3 Parameters

obi_num	0	Obi number	sched_exp_time	99000.000000	[s] Scheduled observation exposure time
ascdsver	8.5.1.1	Processing system revision	ontime	99164.799630582	Sum of GTIs [s]
caldsver	4.5.5	 	ontime0	99164.799630582	Sum of GTIs [s]
date	2012-12-26T20:16:00	Date and time of file creation	ontime1	99164.799630582	Sum of GTIs [s]
revision	3	Processing version of data	ontime2	99155.076639771	Sum of GTIs [s]
			ontime3	99164.799630582	Sum of GTIs [s]
			ontime6	99161.558600456	Sum of GTIs [s]
			ontime8	99155.07675916	Sum of GTIs [s]
			l1events	5075829	Number of level 1 events

2.1.4 Events

	ccd 0	ccd 1	ccd 2	ccd 3	ccd 6	ccd 8		ccd 0	ccd 1	ccd 2	ccd 3	ccd 6	ccd 8
level 1 events	739928	740990	810106	940731	787555	1056519	grade 0 events	55224	52029	61093	138136	54139	92425
rejected events	623240	622313	688151	683774	671445	806921		7%	7%	7%	14%	6%	8%
rejected %	84%	83%	84%	72%	85%	76%	grade 1 events	532	410	605	2867	490	849
								0%	0%	0%	0%	0%	0%
							grade 2 events	23367	24628	22957	44562	22340	52465
								3%	3%	2%	4%	2%	4%
							grade 3 events	10356	10680	10260	18995	10093	23841
								1%	1%	1%	2%	1%	2%
							grade 4 events	9721	10601	10119	18843	9751	22523
								1%	1%	1%	2%	1%	2%
							grade 5 events	32315	33920	30767	37870	35527	48368
								4%	4%	3%	4%	4%	4%
							grade 6 events	18040	20766	17551	36478	19815	58368
								2%	2%	2%	3%	2%	5%
							grade 7 events	590373	587956	656754	642980	635400	757680
								79%	79%	81%	68%	80%	71%

2.2 Compared Parameters

Parameter	Planned	Actual	Parameter	Planned	Actual
Instrument	ACIS	ACIS	Obspar format version number	7	7
Detector	ACIS-012368	ACIS-012368	Obspar file type	PREDICTED	ACTUAL
Grating	NONE	NONE	Obspar update status	NONE	UPDATED
Data mode	FAINT	FAINT	Number of optional ACIS chips dropped	0	0
Observation mode	POINTING	POINTING	On-chip summing requested	N	N
[deg] Pointing RA	266.068745	266.0881981789582	Subarray requested	NONE	NONE
[deg] Pointing Dec	-29.415141	-29.43667360974807	Alternating exposures requested	N	N
[deg] Pointing Roll	277.769605	277.9878520172075	[s] Primary exposure time	0.000000	3.2
[mm] SIM focus pos	-0.782348	-0.7809083437167272			
[mm] SIM defocus	0	0.001439871863259334			
[mm] SIM translation stage pos	-233.592463	-233.5874344608287			
[mm] SIM translation stage offset	0	-0.005018542100998502			
[s] Observation start time (MET)	238385761.184000	238384692.40531			
Observation start date	2005-07-22T02:14:57	2005-07-22T01:58:12			
[s] Observation end time (MET)	238484761.184000	238485587.25993			
Observation end date	2005-07-23T05:44:57	2005-07-23T05:59:47			
Read mode	TIMED	TIMED			

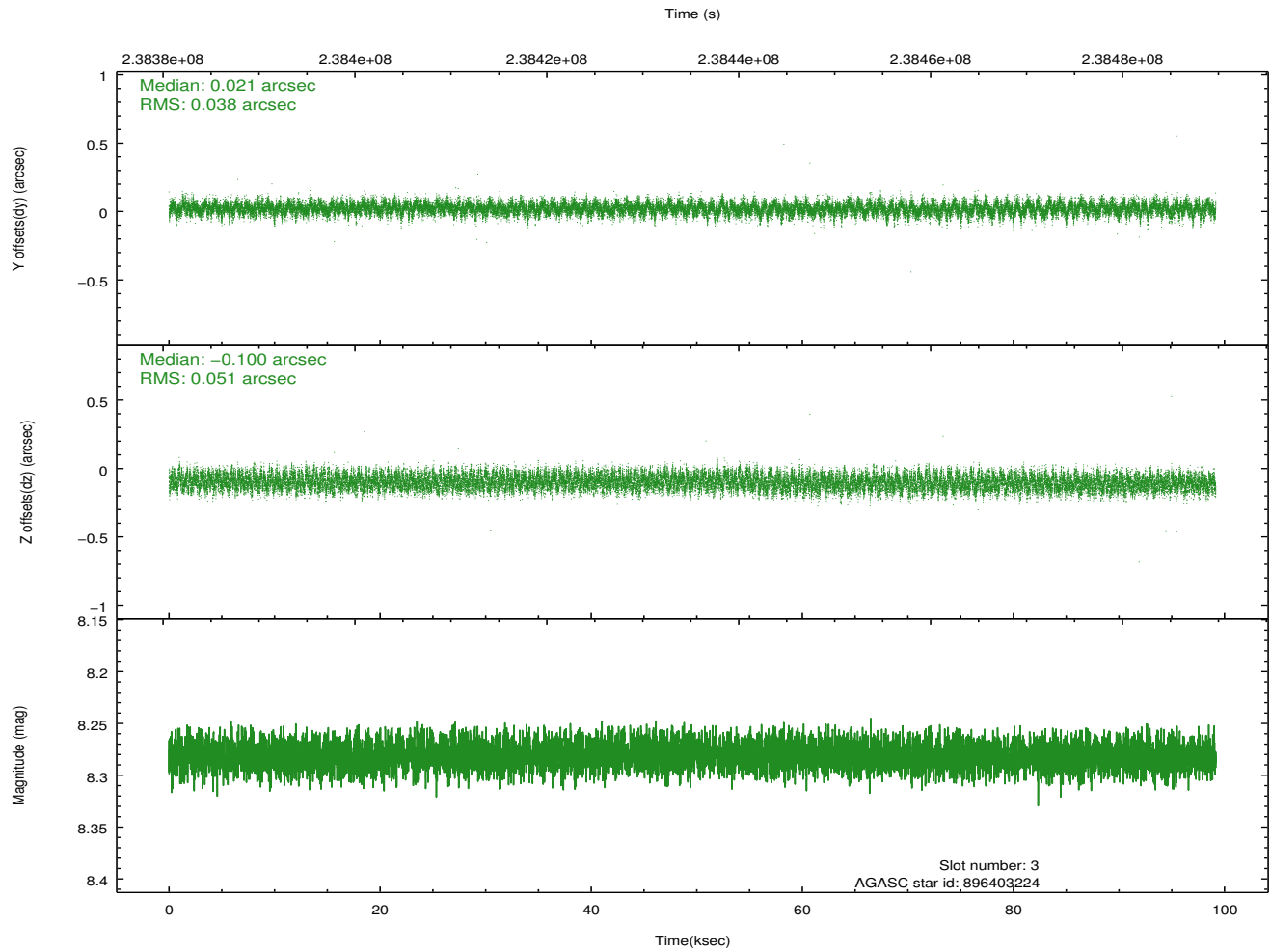
2.3 Aspect

Slot Statistics

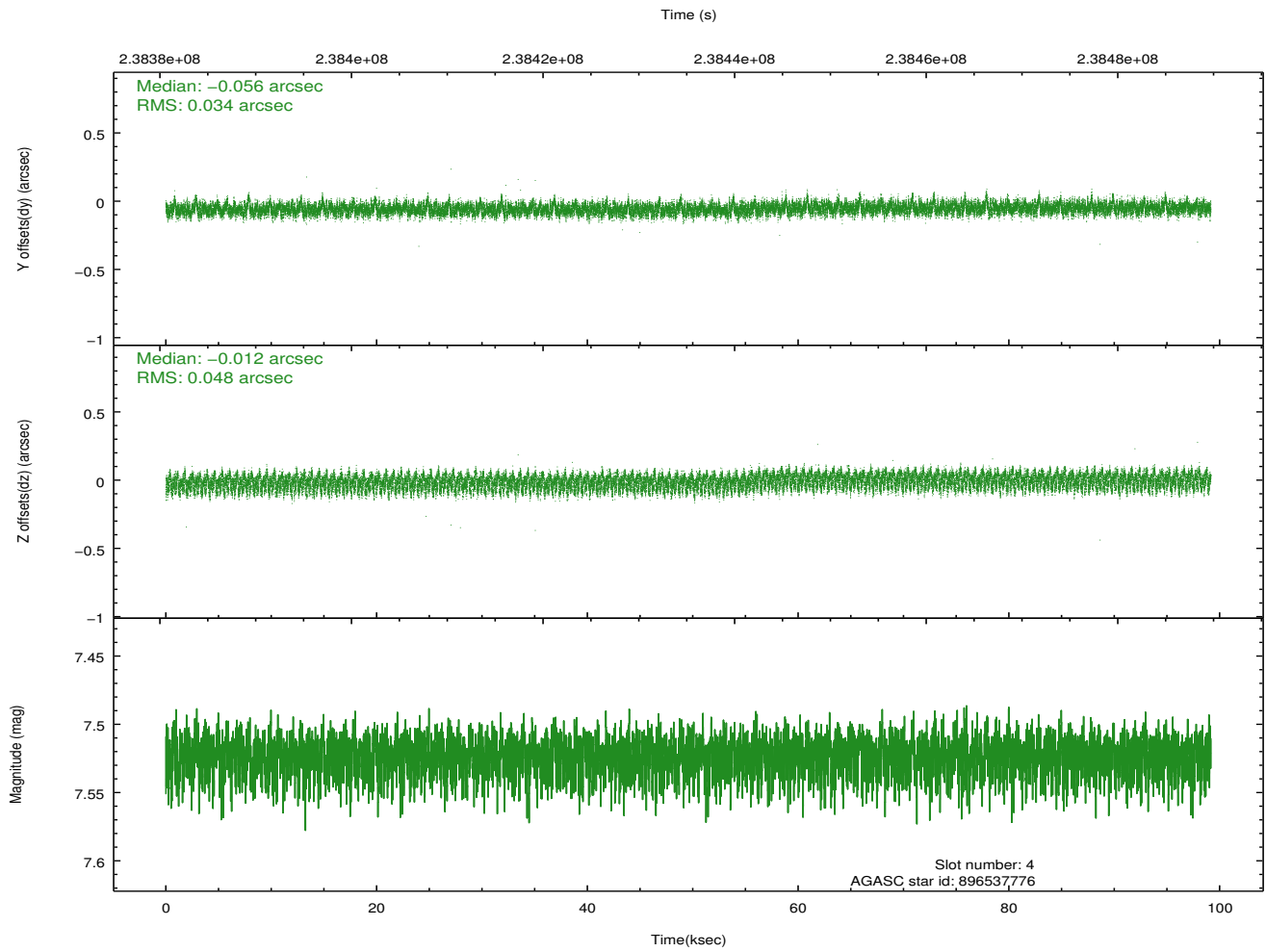
slot	status	id	mag	n_pts	med_dy	med_dz	dr1	dr2	ra	dec	mean_y	mean_z
0	FID	ACIS-I-1	7.25	24187	-0.021	0.032	0.013	0.063	0.000000	0.000000	932.67	-833.45
1	FID	ACIS-I-4	7.18	24188	0.133	0.013	0.017	0.041	0.000000	0.000000	2152.83	1066.38
2	FID	ACIS-I-5	7.23	24189	-0.210	0.027	0.015	0.027	0.000000	0.000000	-1815.62	1064.17
3	GUIDE	896403224	8.28	48367	0.021	-0.100	0.068	0.107	265.612825	-29.438915	-105.02	-1428.14
4	GUIDE	896537776	7.52	48371	-0.056	-0.012	0.064	0.099	266.655684	-29.665673	1146.40	1696.94
5	GUIDE	966791536	9.35	48341	0.225	-0.161	0.103	0.166	265.423122	-30.013043	1867.12	-2285.61
6	GUIDE	896540808	7.46	48369	-0.097	0.087	0.048	0.077	265.985401	-29.308604	-415.04	-207.26
7	GUIDE	896532952	9.02	48341	-0.092	0.185	0.076	0.124	266.383644	-28.787617	-2102.71	1289.75

2.4 Star Slots

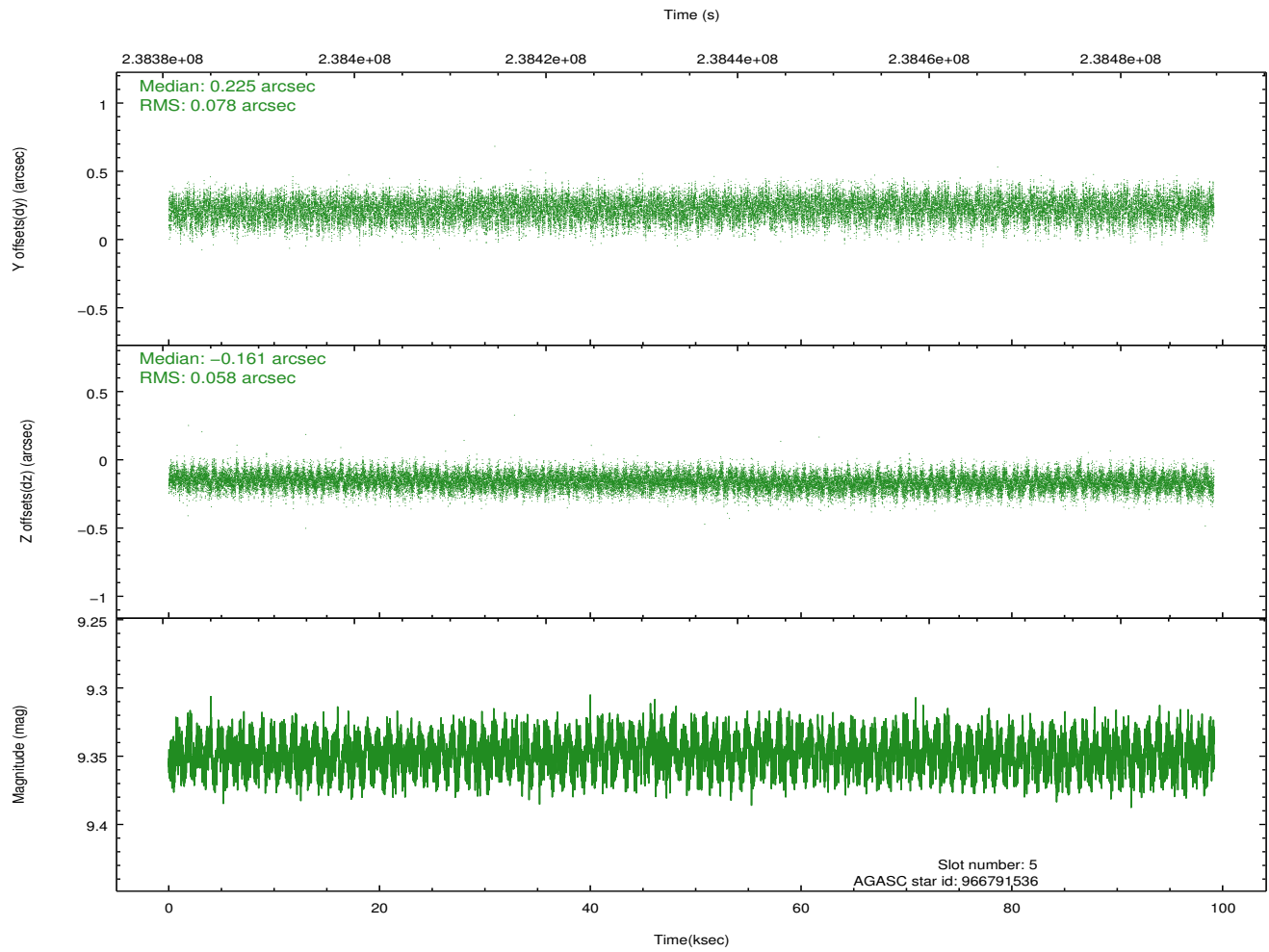
2.4.1 Slot 3



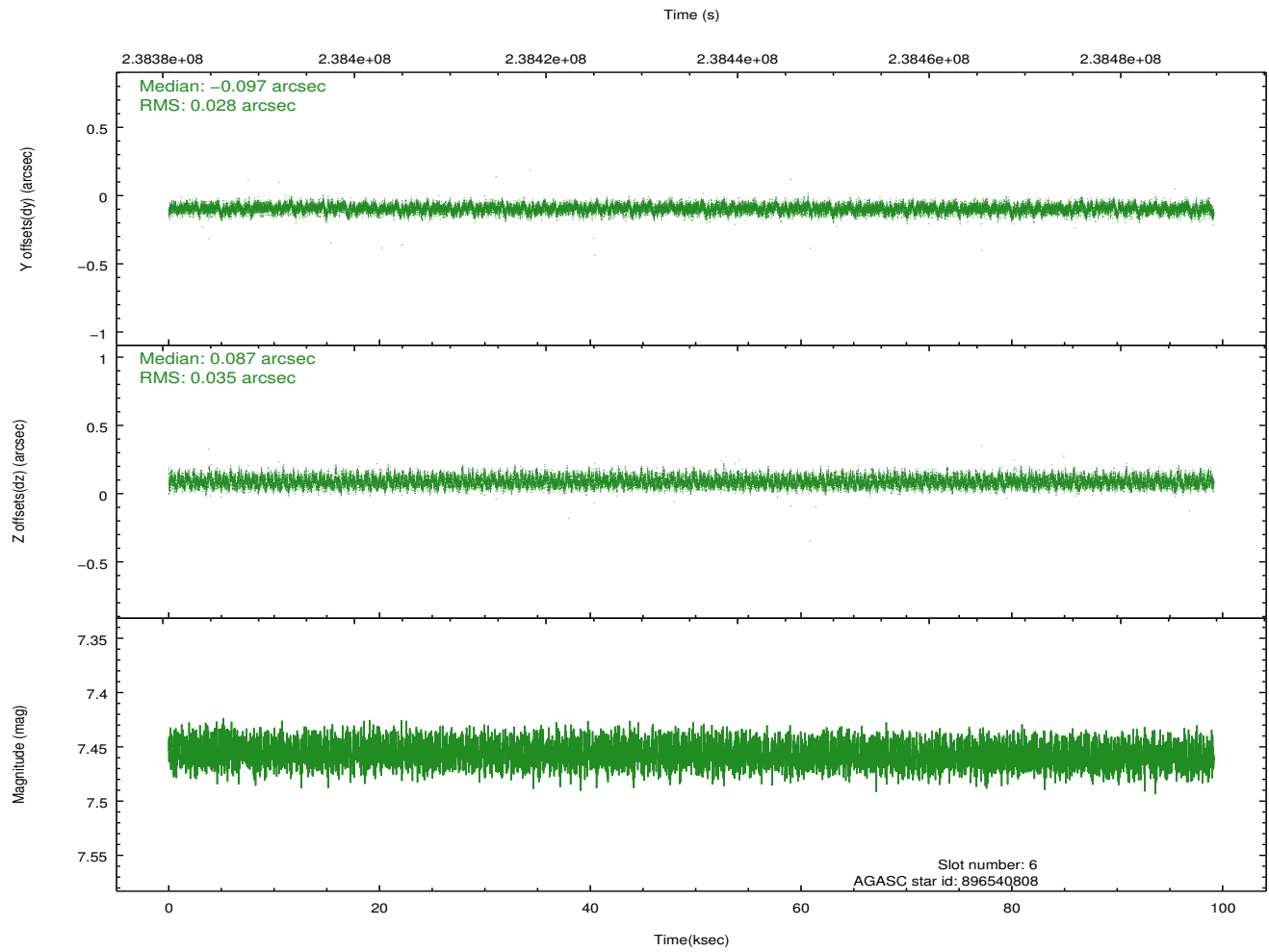
2.4.2 Slot 4



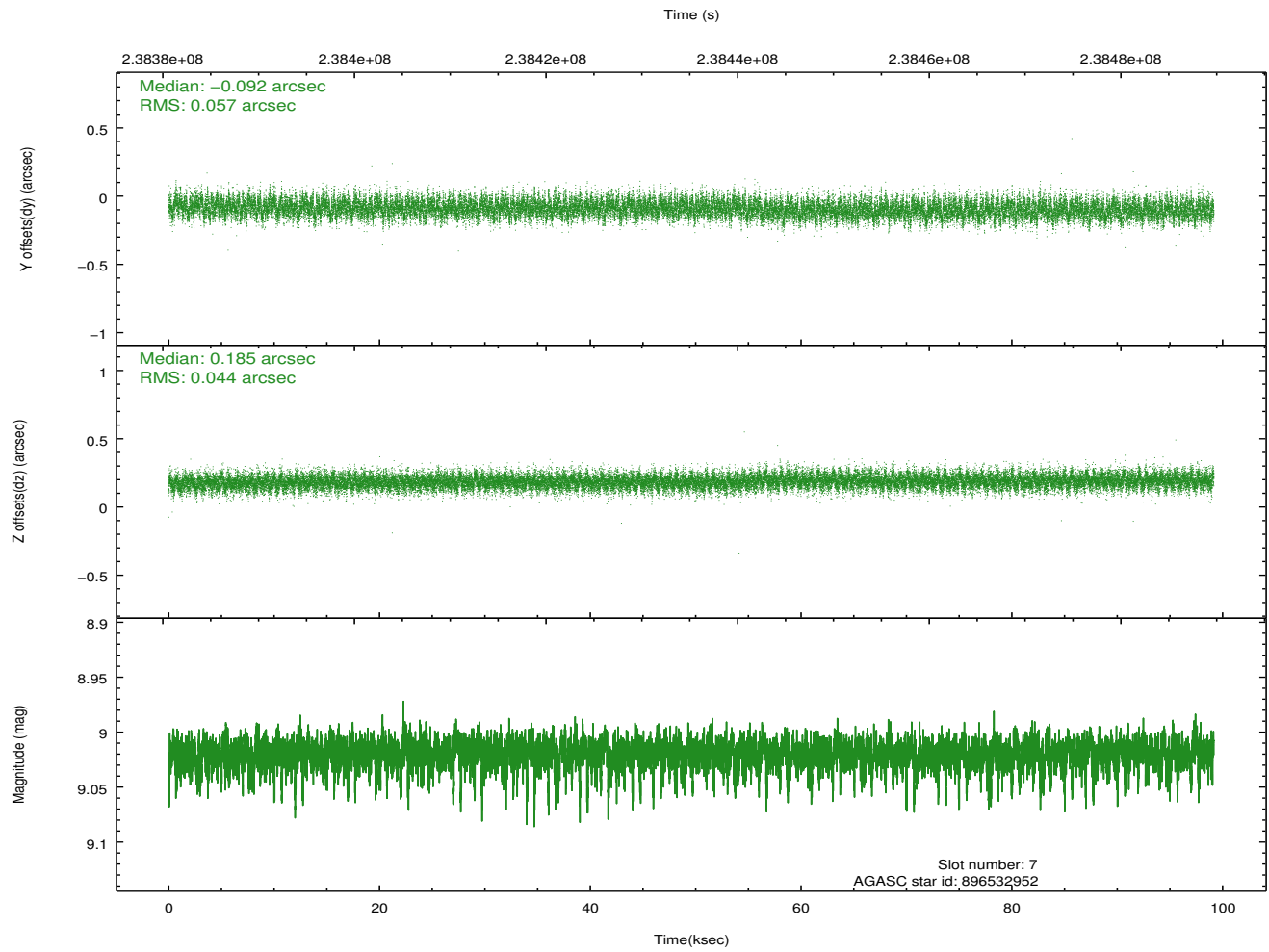
2.4.3 Slot 5



2.4.4 Slot 6

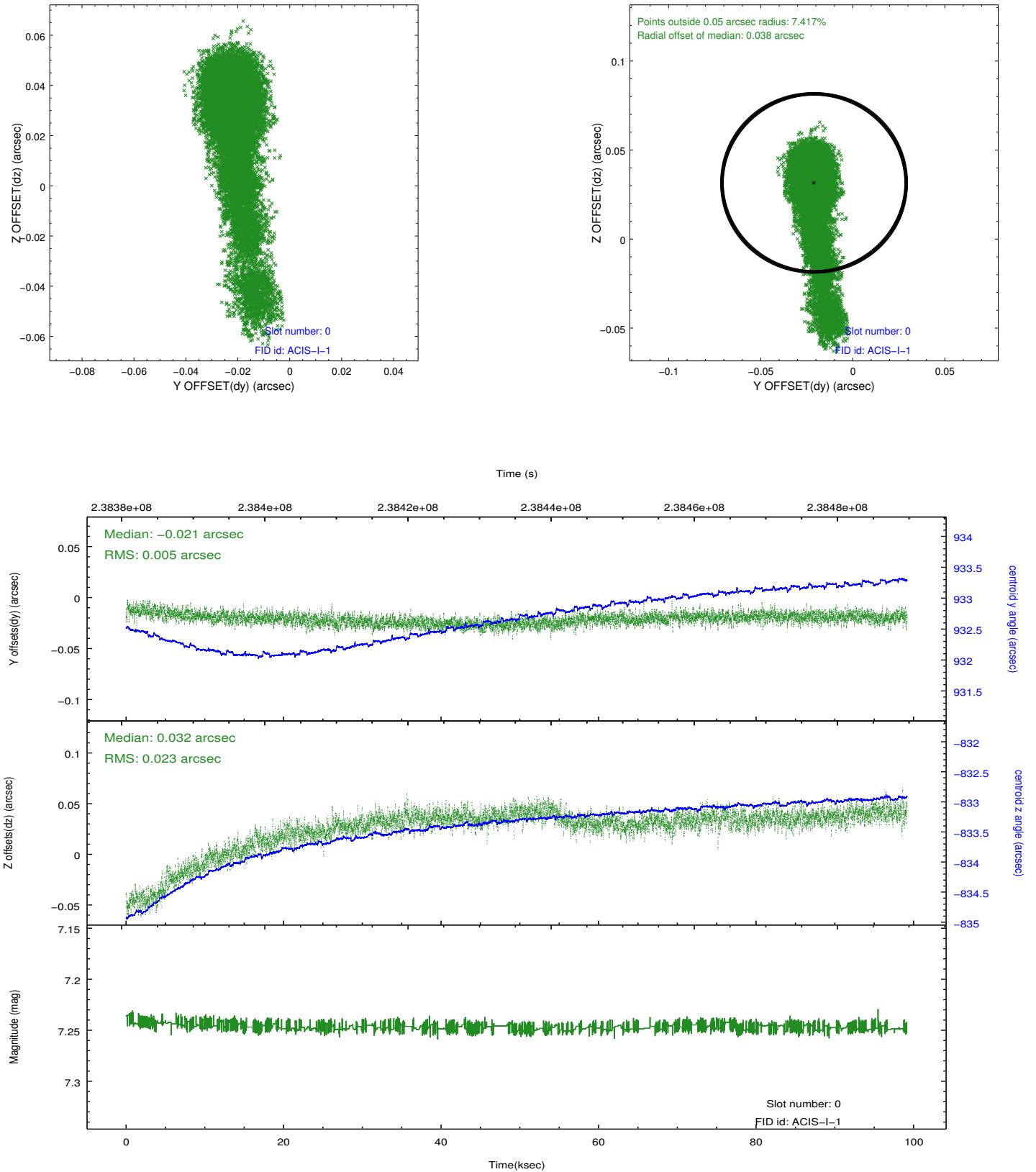


2.4.5 Slot 7

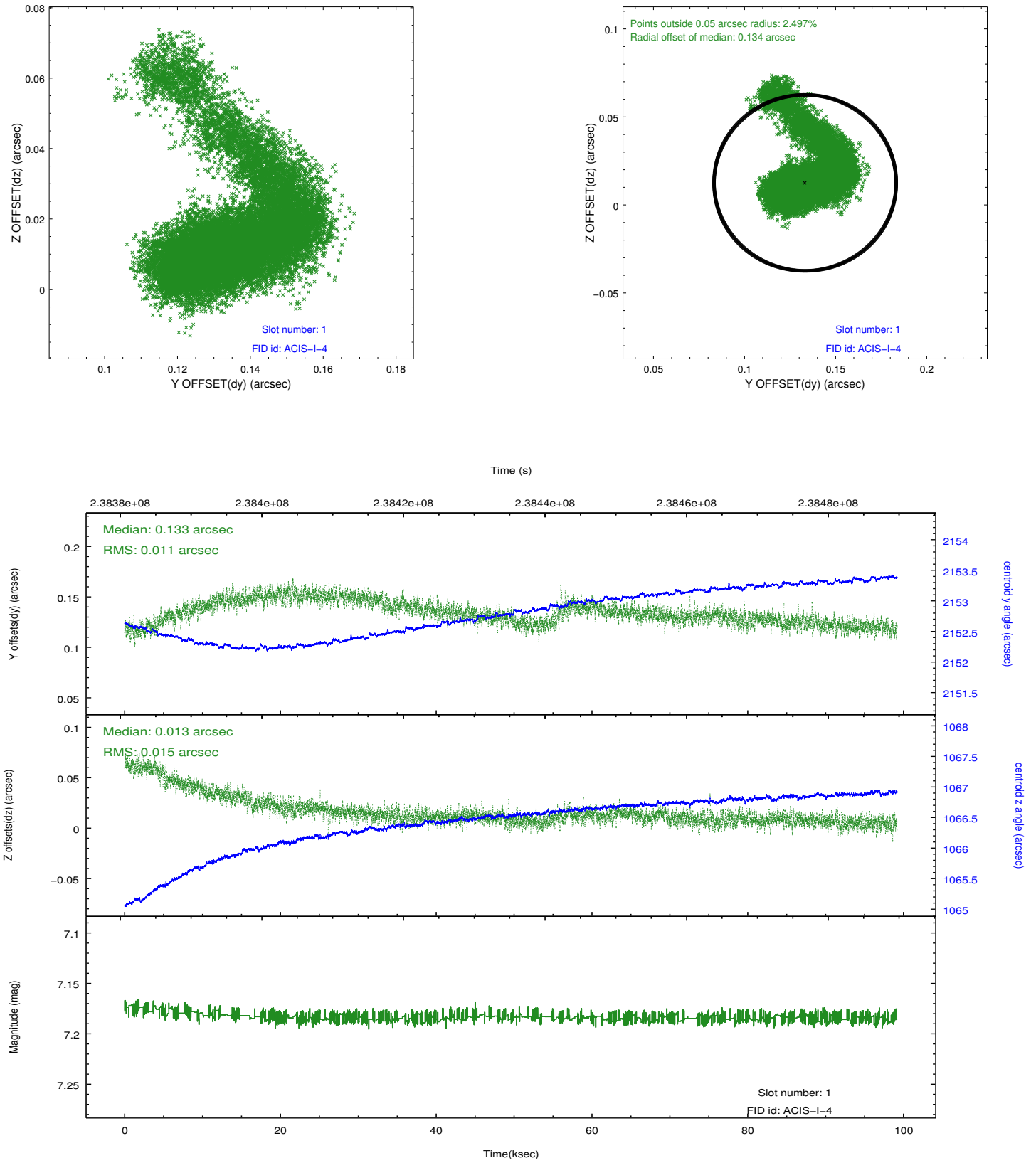


2.5 FID Slots

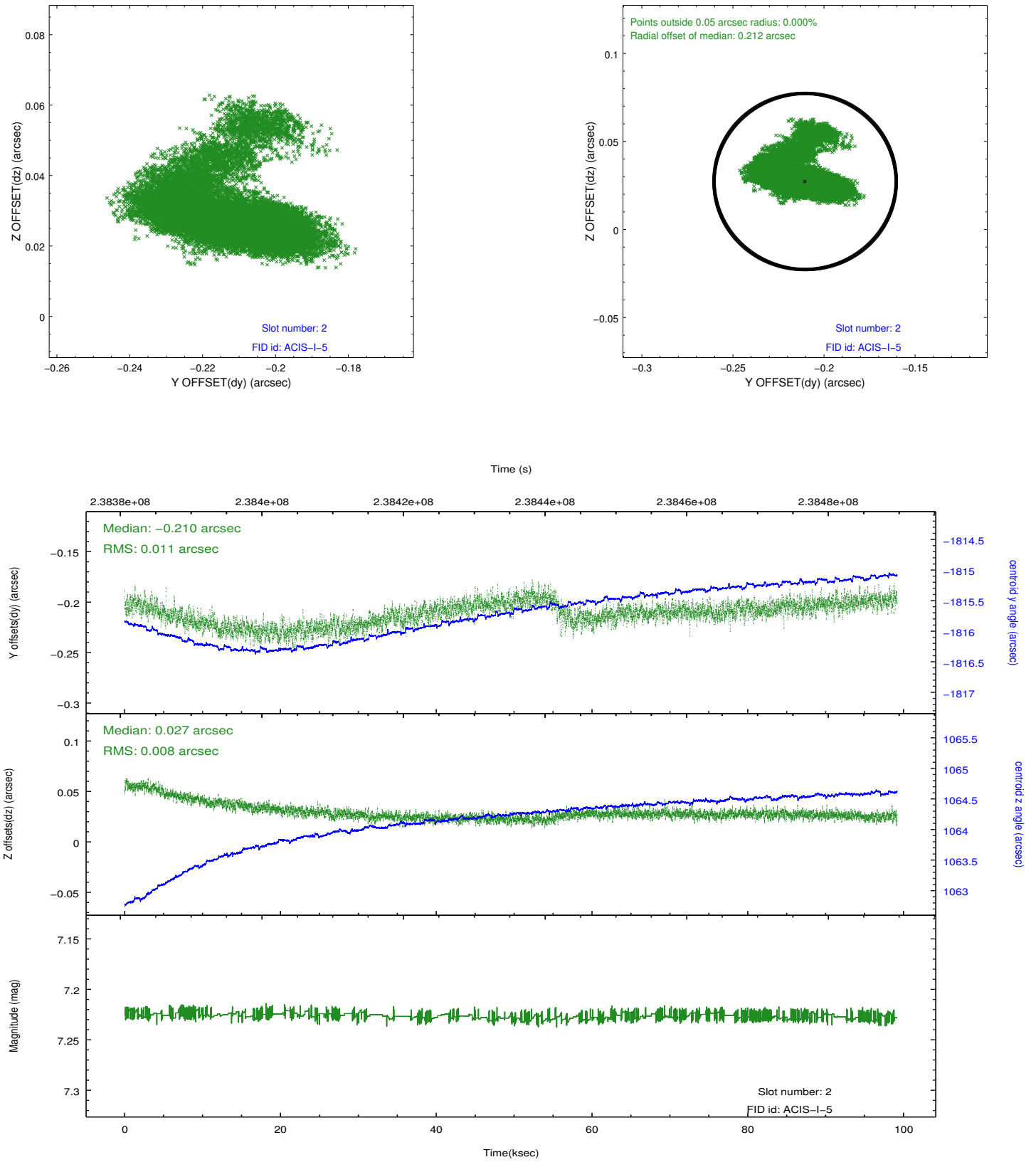
2.5.1 Slot 0



2.5.2 Slot 1



2.5.3 Slot 2



A Summary

A.1 Status

V&V Scientist	Jen Lauer
V&V Date (YYYY-MM-DD)	2013.01.23
V&V Edition	1
V&V Disposition and Status	OK
V&V Charge Time	99.16479

A.2 Comments