

V&V Reference Report

L2 ASCDS Version : 8.5.1.1

Observation 5762 - L2 Version 3
Chandra X-Ray Center

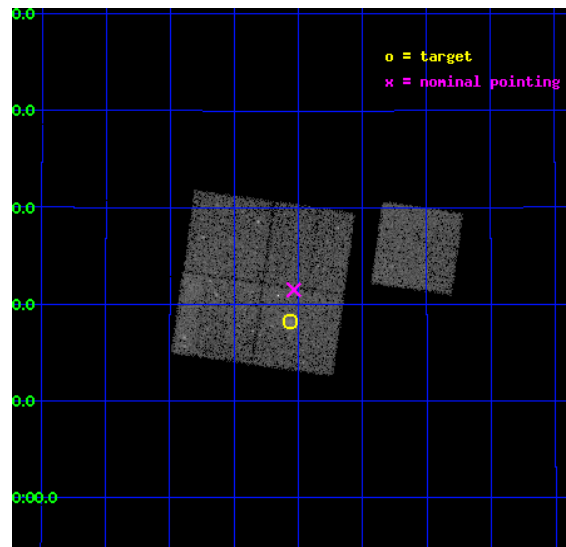
L2 Processing Date : Dec 23 2012

Contents

1	Front	2
2	OBI	3
2.1	OBI	3
2.1.1	Images	3
2.1.2	Bias	3
2.1.3	Parameters	4
2.1.4	Events	4
2.2	Compared Parameters	5
2.3	Aspect	6
2.4	Star Slots	9
2.4.1	Slot 3	9
2.4.2	Slot 4	10
2.4.3	Slot 5	11
2.4.4	Slot 6	12
2.4.5	Slot 7	13
2.5	FID Slots	14
2.5.1	Slot 0	14
2.5.2	Slot 1	15
2.5.3	Slot 2	16
A	Summary	17
A.1	Status	17
A.2	Comments	17

1 Front

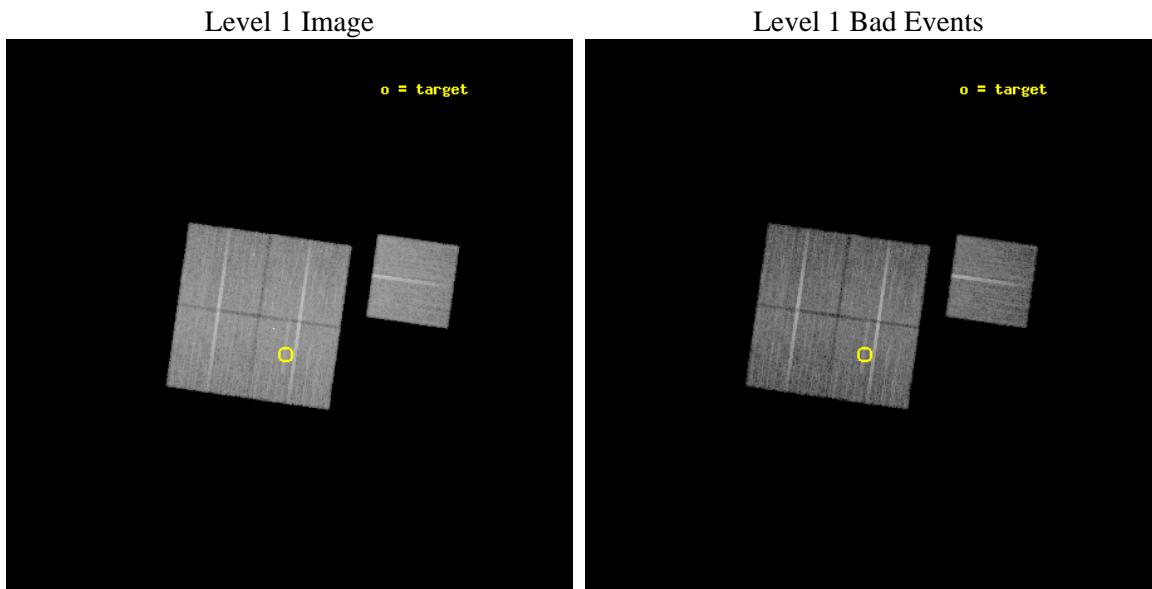
seq_num	800475	Sequence number
obs_id	5762	Observation id
title	DARK ENERGY WITH X-RAY CLUSTERS: CHANDRA OBSERVATIONS OF 41 HIGH-REDSHIFT CLUSTERS FROM THE 400 deg^2 ROSAT PSPC SURVEY	Proposal titl
observer	Dr. Alexey Vikhlinin	Principal investigator
object	cl0030+2618	Source name
dtcycle	0	
cycle	P	events from which exps? Prim/Second/Both
ra_targ	7.64	Observer's specified target RA [deg]
dec_targ	26.304444	Observer's specified target Dec [deg]
ra_nom	7.6337019973444	Nominal RA [deg]
dec_nom	26.358483002213	Nominal Dec [deg]
roll_nom	98.057738000427	Nominal Roll [deg]
revision	3	Processing version of data
ontime	18125.699965119	Sum of GTIs [s]
livetime	17888.874351129	Livetime [s]
ontime0	18122.559004873	Sum of GTIs [s]
ontime1	18125.699965119	Sum of GTIs [s]
ontime2	18122.559004873	Sum of GTIs [s]
ontime3	18125.699965119	Sum of GTIs [s]
ontime6	18119.418024629	Sum of GTIs [s]
l2events	56180	Number of level 2 events



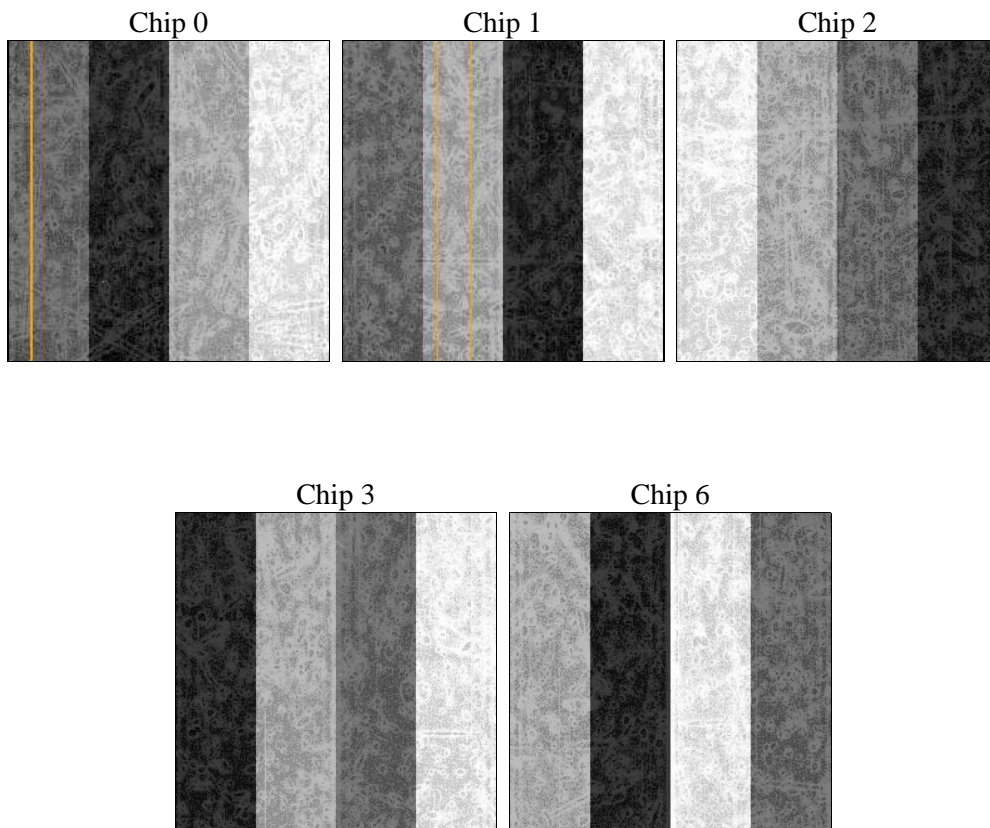
2 OBI

2.1 OBI

2.1.1 Images



2.1.2 Bias



2.1.3 Parameters

obi_num	0	Obi number	sched_exp_time	18000.000000	[s] Scheduled observation exposure time
ascdsver	8.5.1.1	Processing system revision	ontime	18125.699965119	Sum of GTIs [s]
caldbver	4.5.5	 	ontime0	18122.559004873	Sum of GTIs [s]
date	2012-12-23T18:40:34	Date and time of file creation	ontime1	18125.699965119	Sum of GTIs [s]
revision	3	Processing version of data	ontime2	18122.559004873	Sum of GTIs [s]
			ontime3	18125.699965119	Sum of GTIs [s]
			ontime6	18119.418024629	Sum of GTIs [s]
			l1events	591921	Number of level 1 events

2.1.4 Events

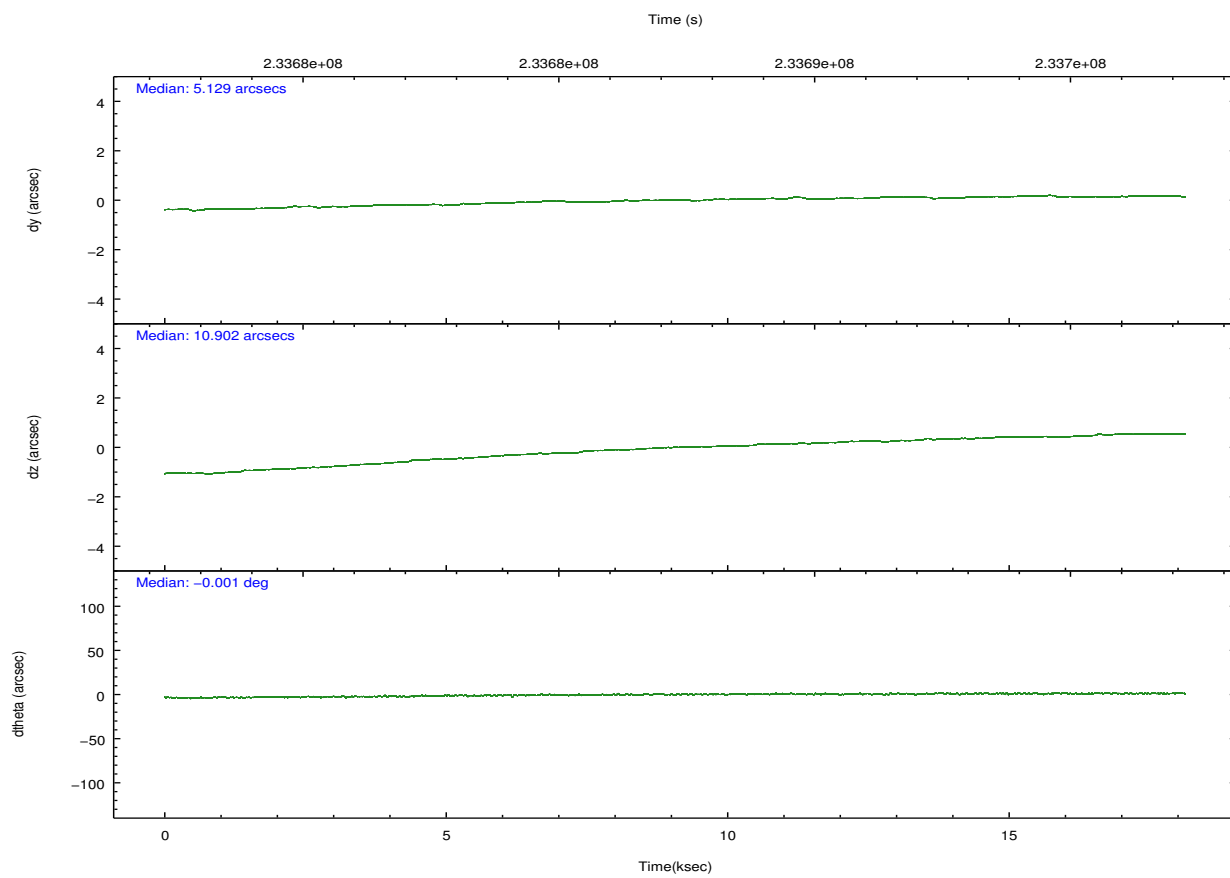
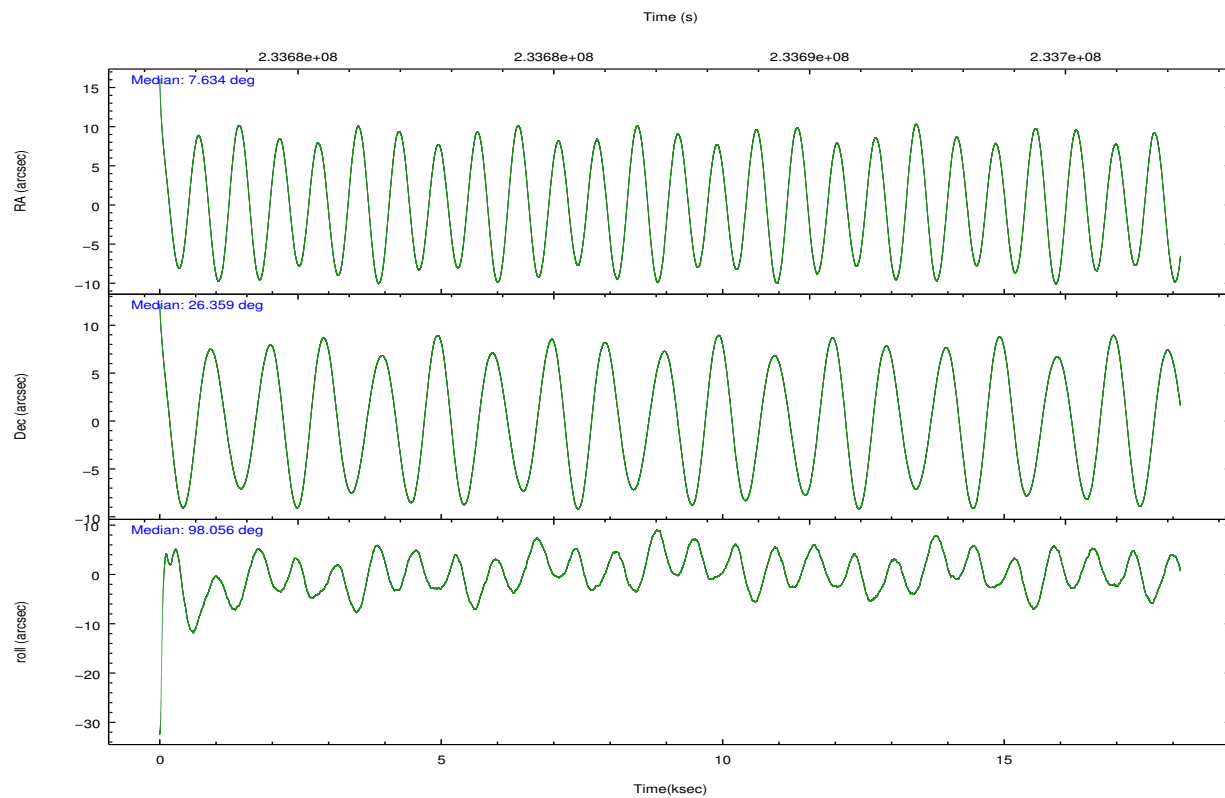
	ccd 0	ccd 1	ccd 2	ccd 3	ccd 6
level 1 events	111079	114316	121566	124720	120240
rejected events	98383	99745	109459	110788	107173
rejected %	88%	87%	90%	88%	89%

	ccd 0	ccd 1	ccd 2	ccd 3	ccd 6
grade 0 events	5154	5962	4833	6559	5202
	4%	5%	3%	5%	4%
grade 1 events	56	75	50	77	66
	0%	0%	0%	0%	0%
grade 2 events	2943	3194	2808	2669	2812
	2%	2%	2%	2%	2%
grade 3 events	1426	1500	1335	1418	1420
	1%	1%	1%	1%	1%
grade 4 events	1352	1468	1326	1306	1432
	1%	1%	1%	1%	1%
grade 5 events	4258	4551	3882	4919	4846
	3%	3%	3%	3%	4%
grade 6 events	2207	2860	2144	2357	2619
	1%	2%	1%	1%	2%
grade 7 events	93683	94706	105188	105415	101843
	84%	82%	86%	84%	84%

2.2 Compared Parameters

Parameter	Planned	Actual	Parameter	Planned	Actual
Instrument	ACIS	ACIS	Obspar format version number	7	7
Detector	ACIS-01236	ACIS-01236	Obspar file type	PREDICTED	ACTUAL
Grating	NONE	NONE	Obspar update status	NONE	UPDATED
Data mode	VFAINT	VFAINT	Number of optional ACIS chips dropped	0	0
Observation mode	POINTING	POINTING	On-chip summing requested	N	N
[deg] Pointing RA	7.652646	7.63370199734436	Subarray requested	NONE	NONE
[deg] Pointing Dec	26.336957	26.35848300221333	Alternating exposures requested	N	N
[deg] Pointing Roll	97.840669	98.05773800042735	[s] Primary exposure time	0.000000	3.1
[mm] SIM focus pos	-0.782348	-0.7809083437167272			
[mm] SIM defocus	0	0.001439871863259334			
[mm] SIM translation stage pos	-225.840463	-225.8433433320239			
[mm] SIM translation stage offset	-7.752	-7.749109670905796			
[s] Observation start time (MET)	233678341.184000	233677093.20271			
Observation start date	2005-05-28T14:37:57	2005-05-28T14:18:13			
[s] Observation end time (MET)	233696341.184000	233697324.65363			
Observation end date	2005-05-28T19:37:57	2005-05-28T19:55:24			
Read mode	TIMED	TIMED			

2.3 Aspect

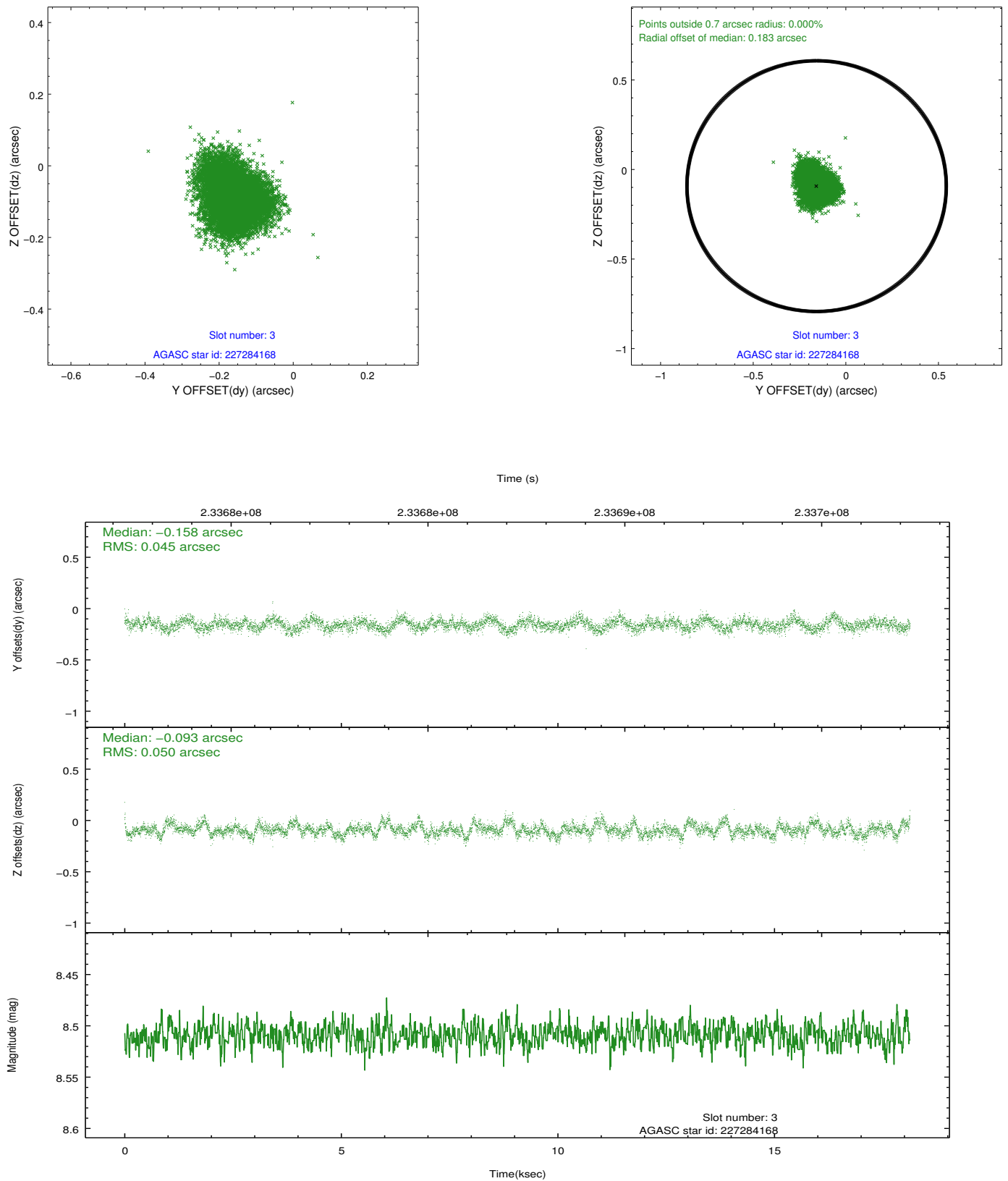


Slot Statistics

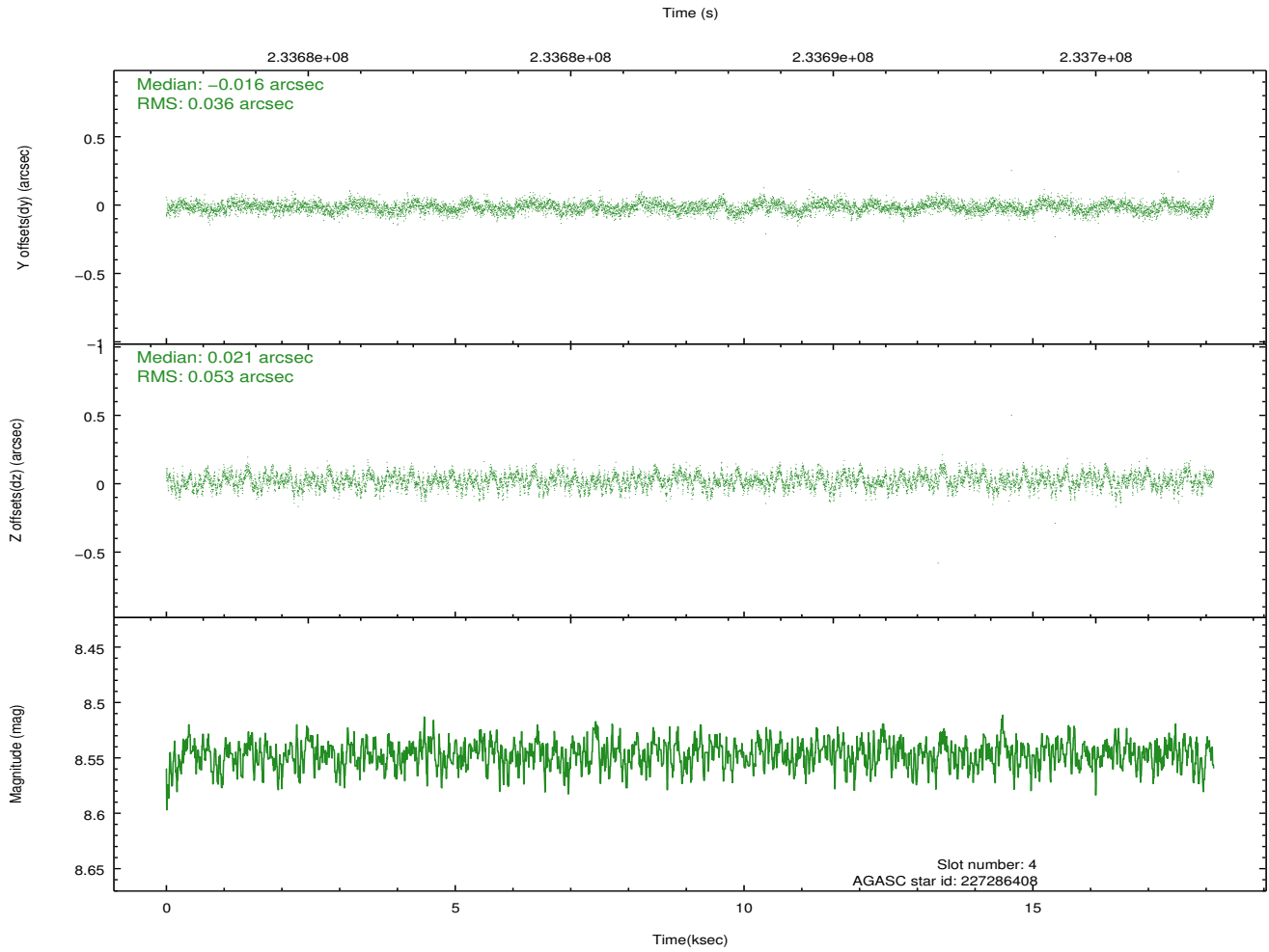
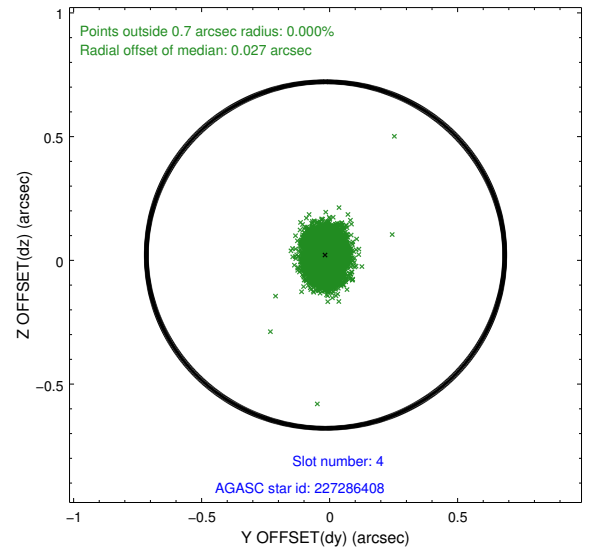
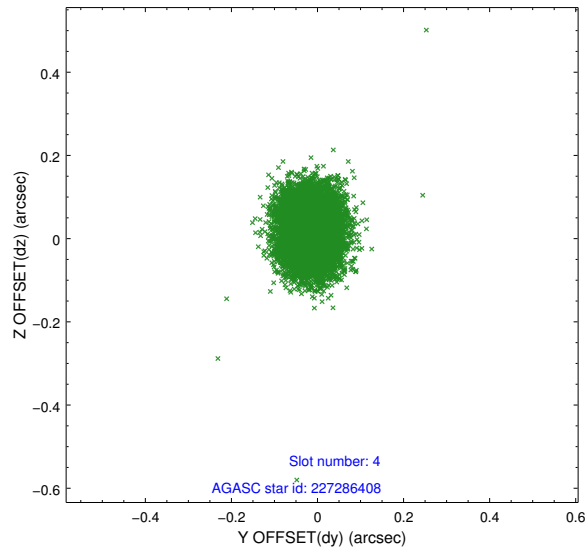
slot	status	id	mag	n_pts	med_dy	med_dz	dr1	dr2	ra	dec	mean_y	mean_z
0	FID	ACIS-I-1	7.23	4423	0.131	-0.116	0.019	0.044	0.000000	0.000000	934.61	-993.48
1	FID	ACIS-I-5	7.22	4423	-0.272	0.105	0.016	0.031	0.000000	0.000000	-1813.74	904.13
2	FID	ACIS-I-6	7.25	4423	0.051	0.082	0.017	0.030	0.000000	0.000000	399.89	1548.83
3	GUIDE	227284168	8.51	8839	-0.158	-0.093	0.071	0.117	7.338725	26.871683	2045.57	735.95
4	GUIDE	227286408	8.55	8847	-0.016	0.021	0.067	0.111	7.352499	26.495316	697.97	880.27
5	GUIDE	227287208	9.29	8840	-0.045	0.197	0.099	0.163	7.827867	26.478041	426.49	-628.40
6	GUIDE	227288248	8.91	8841	-0.012	-0.052	0.079	0.126	7.112560	26.515036	875.98	1635.67
7	GUIDE	227285648	10.01	8837	0.230	-0.065	0.158	0.242	7.584220	25.909782	-1492.88	429.44

2.4 Star Slots

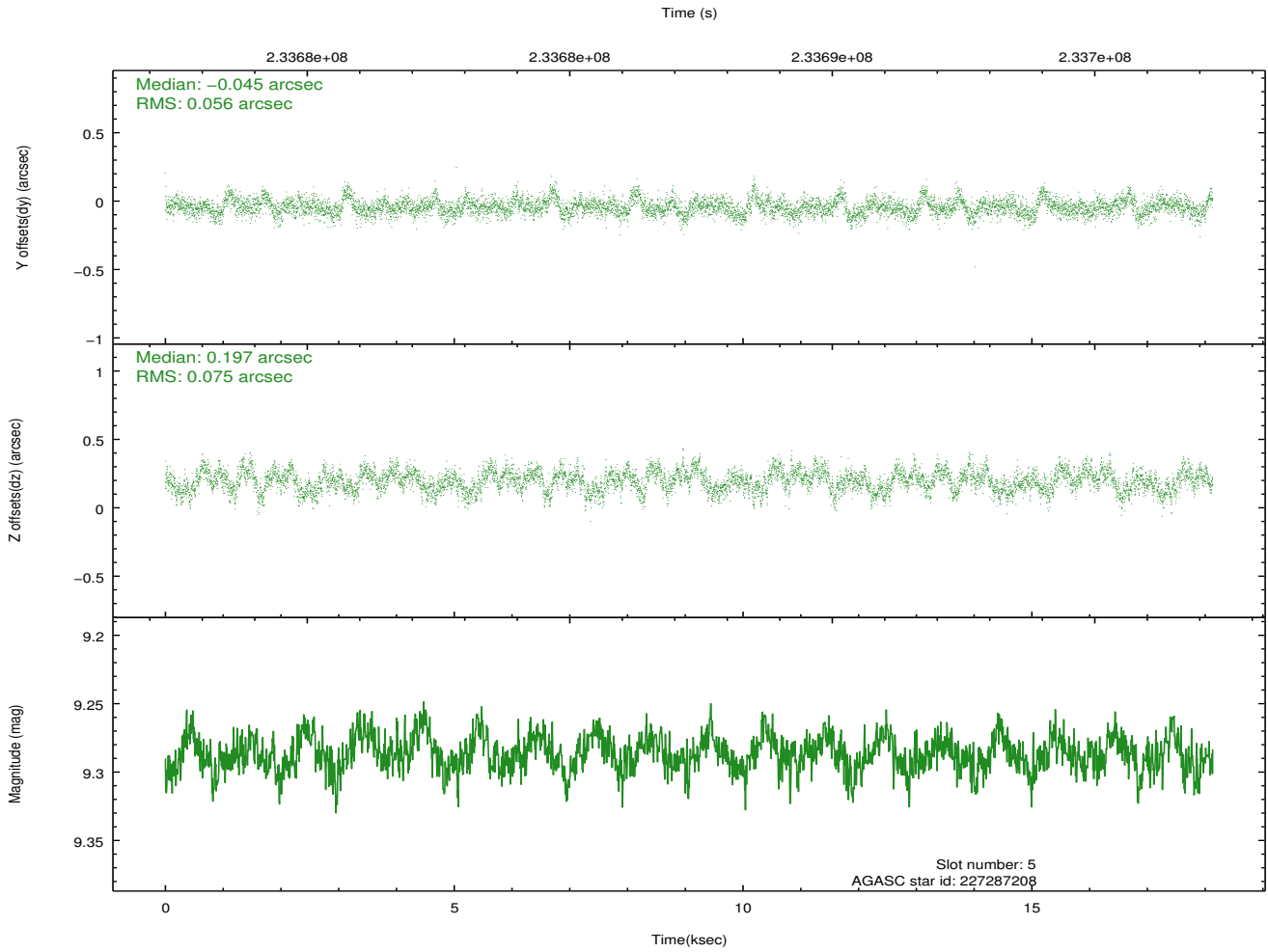
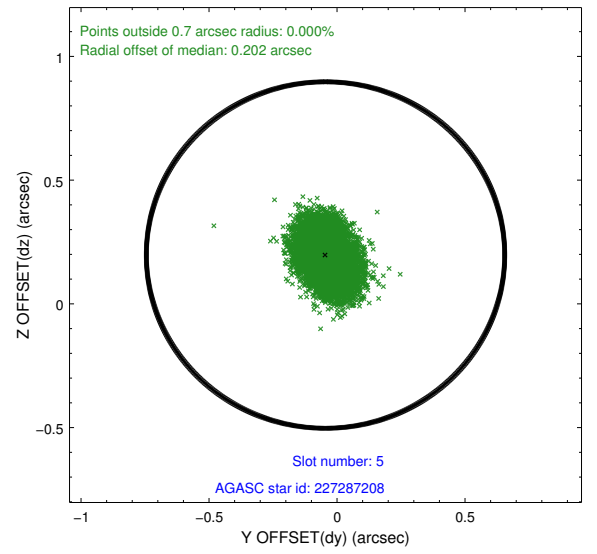
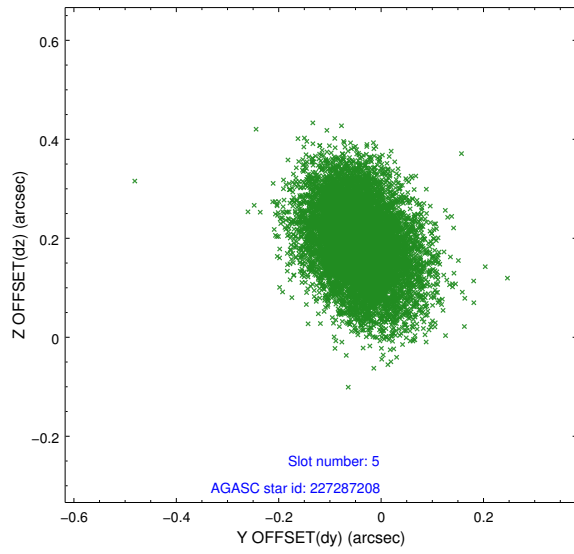
2.4.1 Slot 3



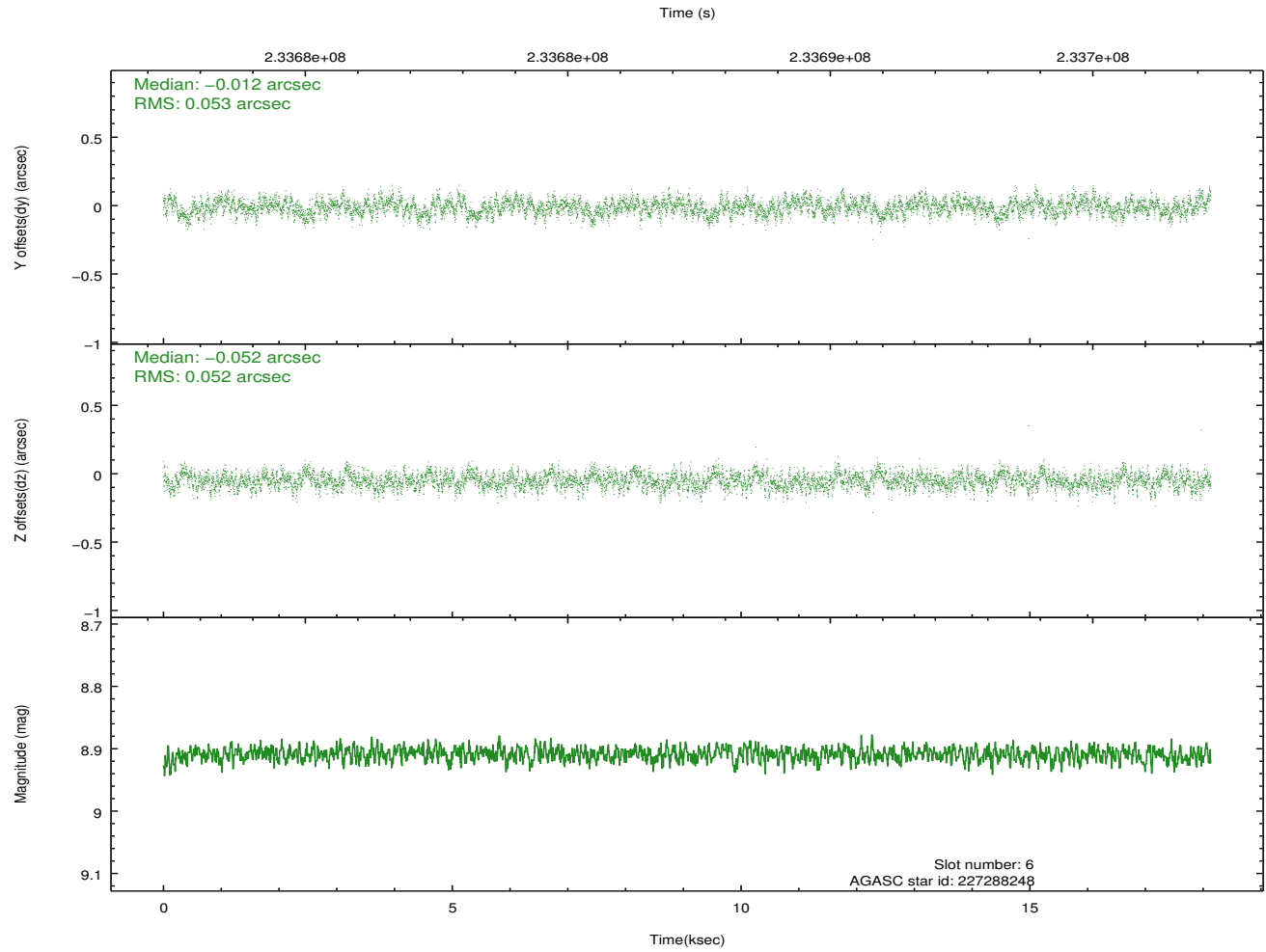
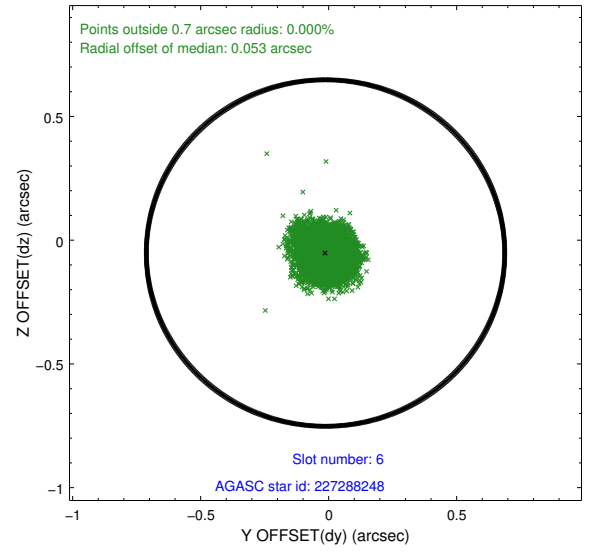
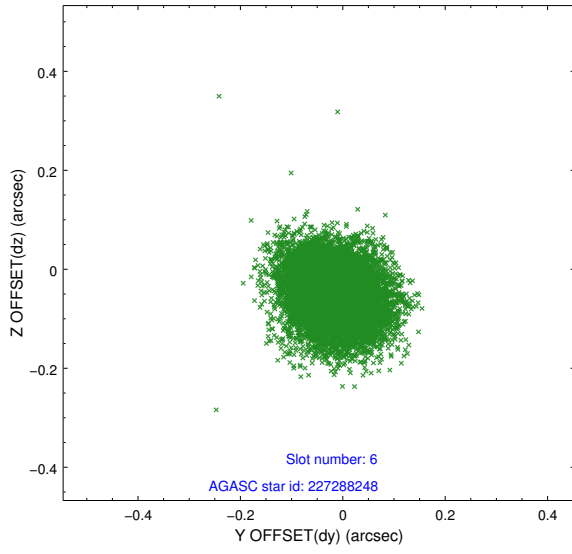
2.4.2 Slot 4



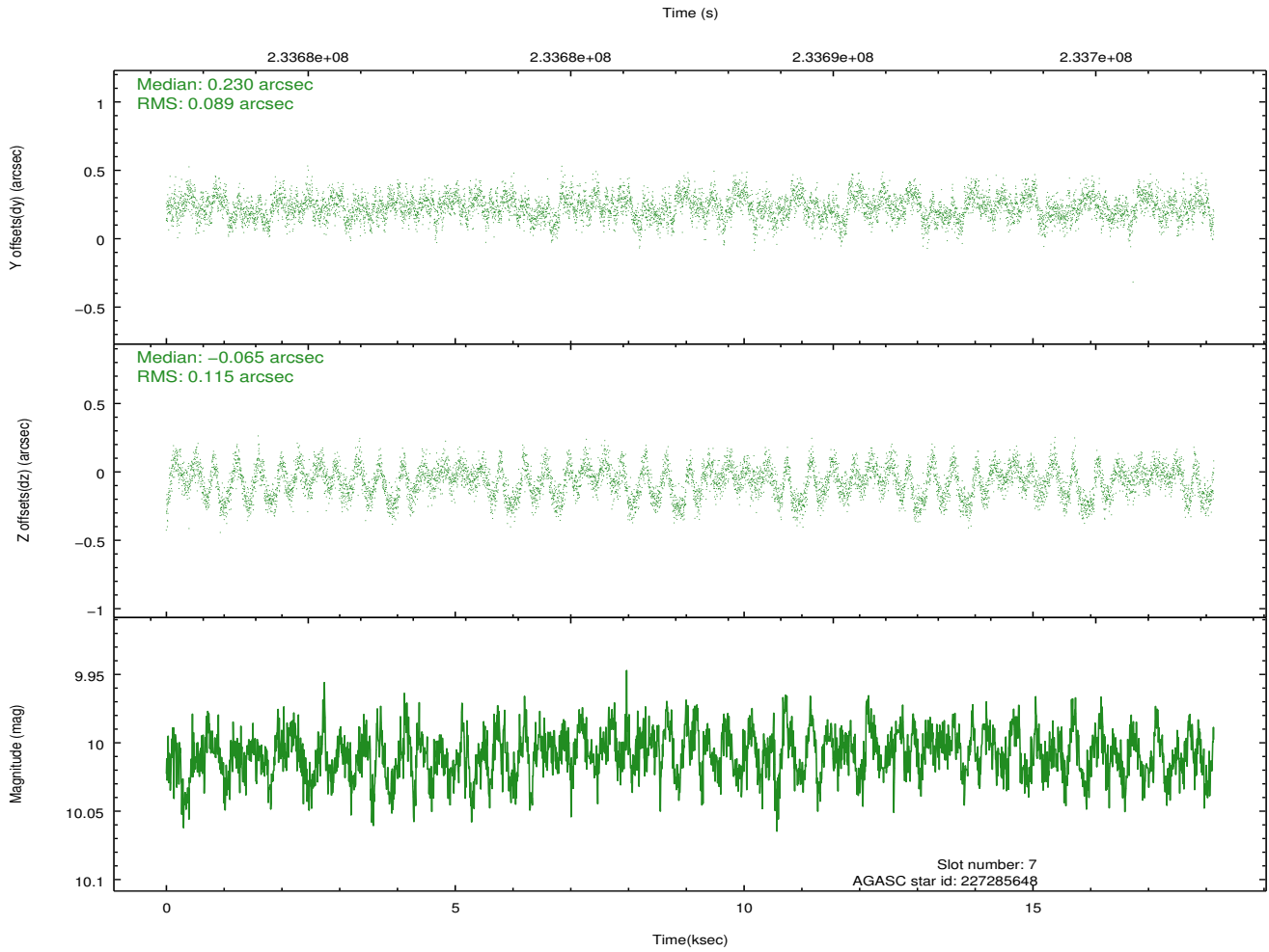
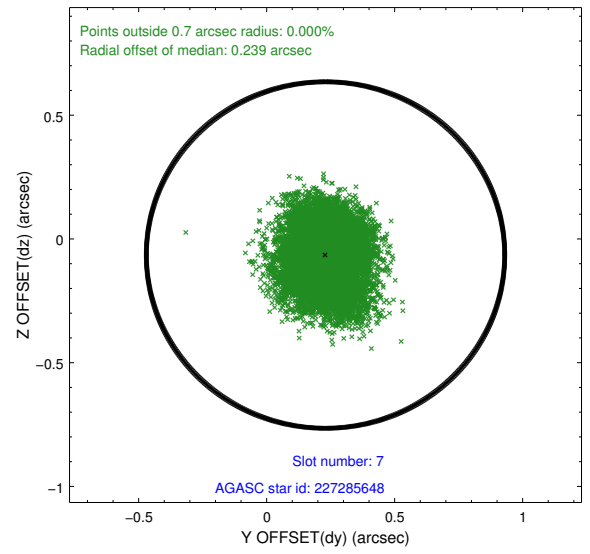
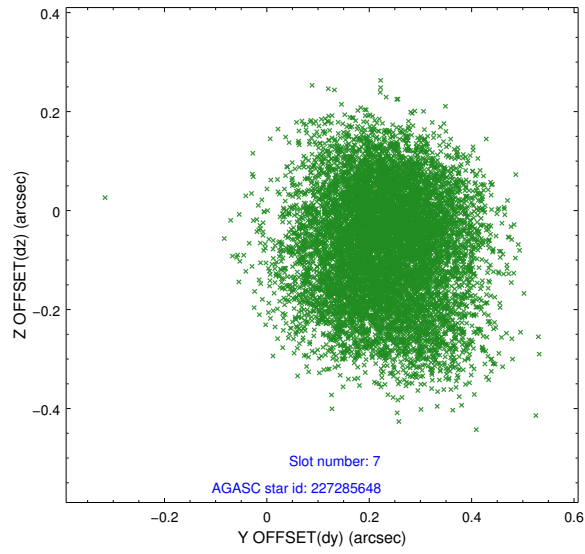
2.4.3 Slot 5



2.4.4 Slot 6

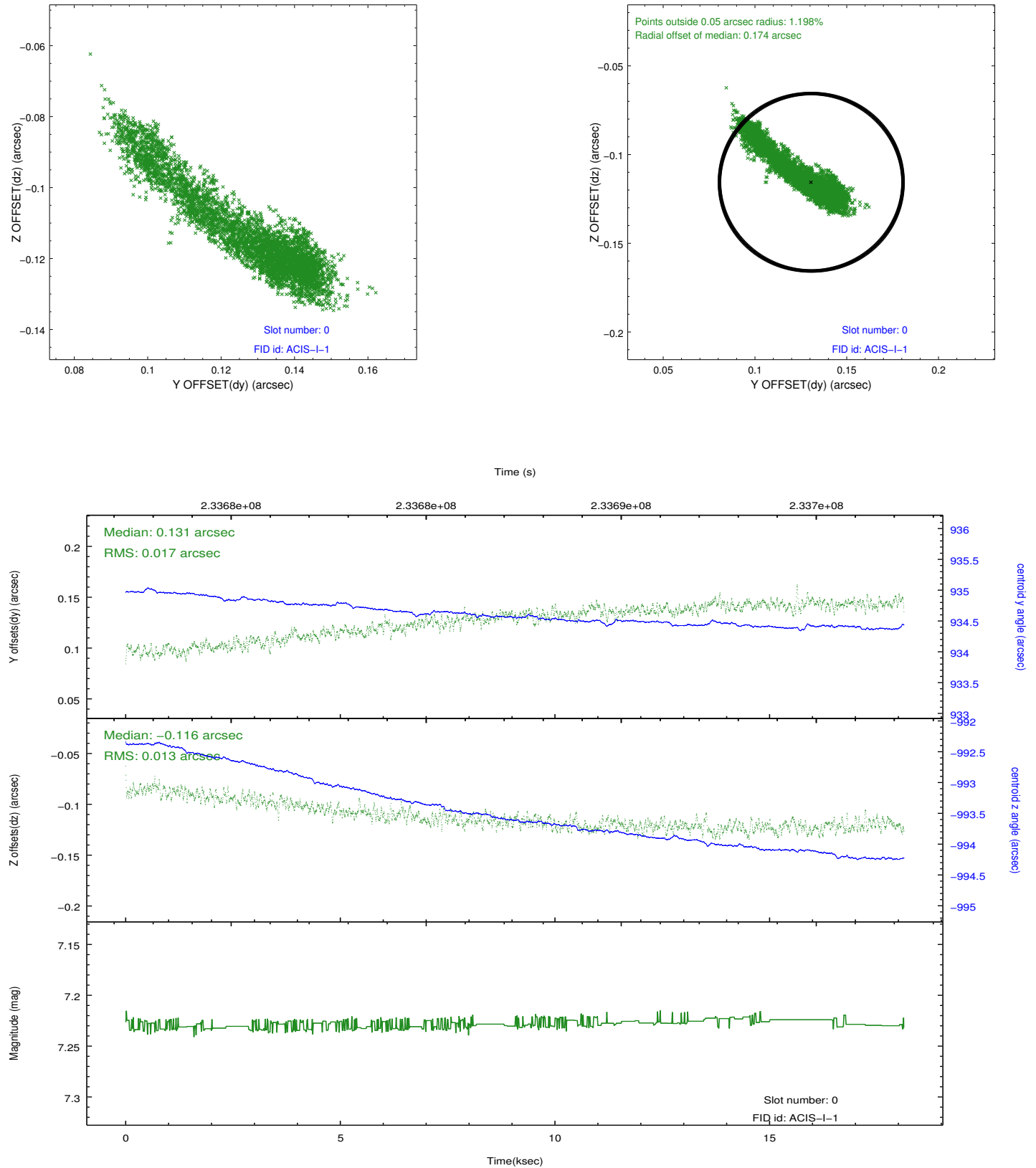


2.4.5 Slot 7

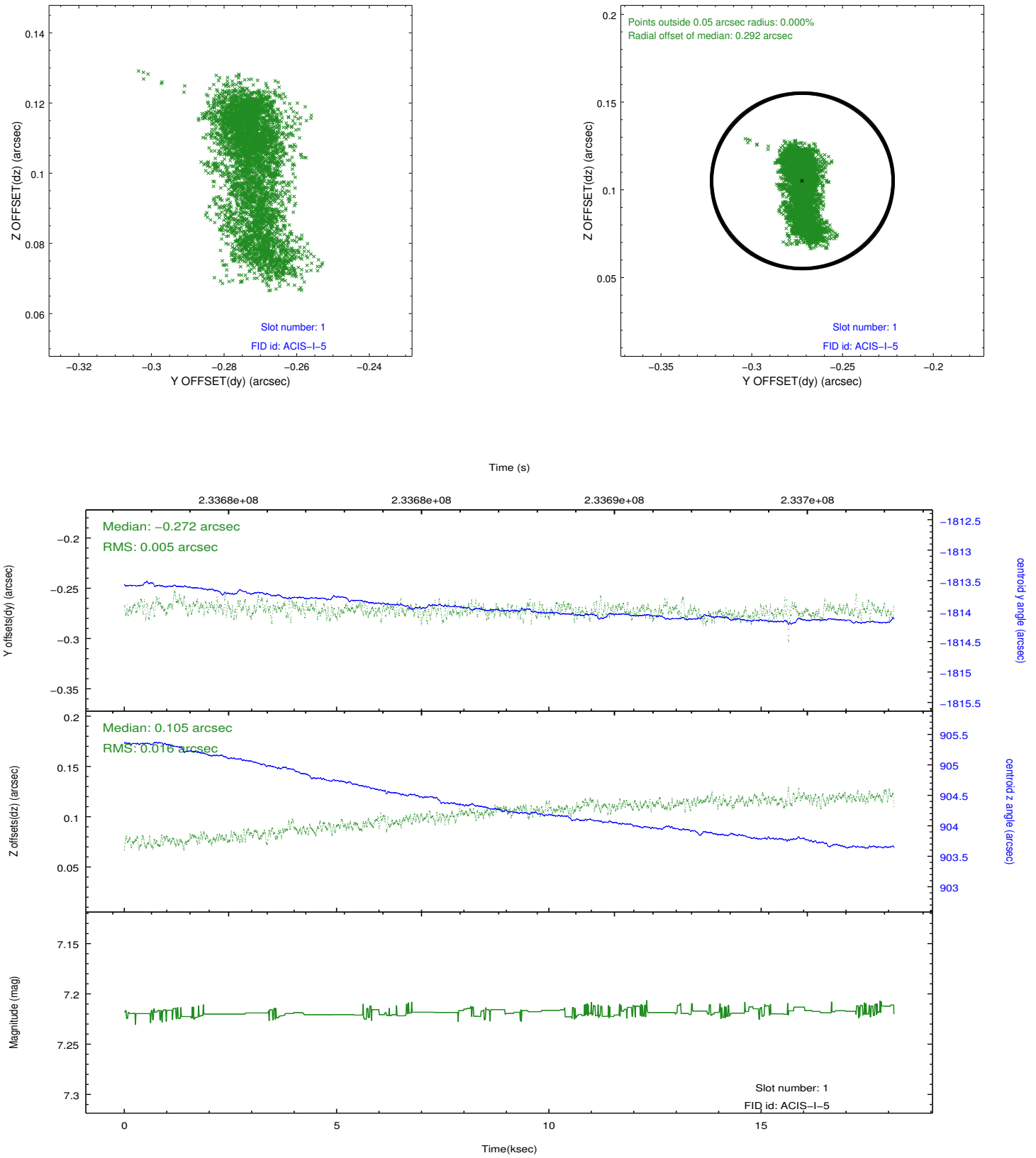


2.5 FID Slots

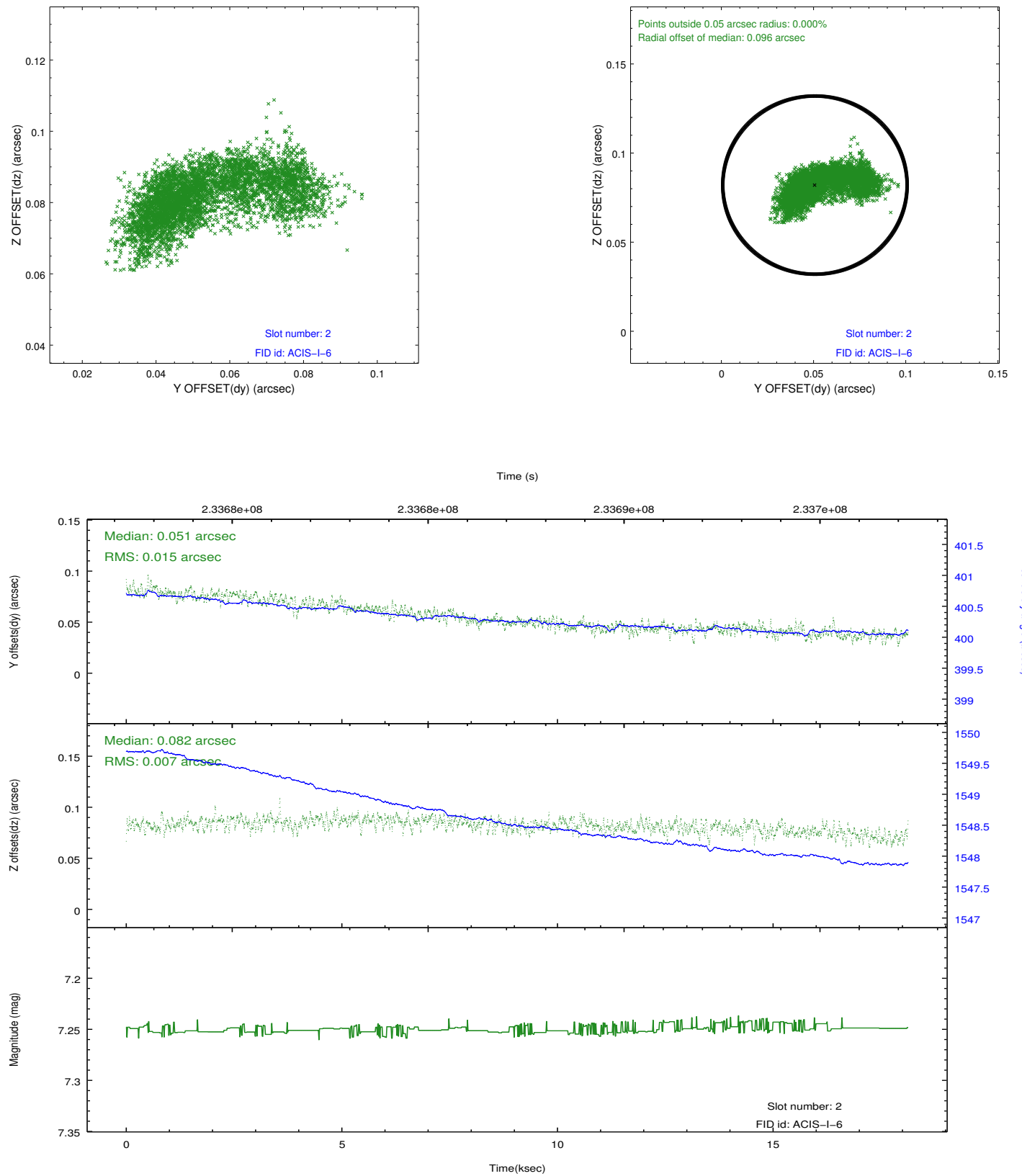
2.5.1 Slot 0



2.5.2 Slot 1



2.5.3 Slot 2



A Summary

A.1 Status

V&V Scientist	Jen Lauer
V&V Date (YYYY-MM-DD)	2013.01.16
V&V Edition	1
V&V Disposition and Status	OK
V&V Charge Time	18.12569

A.2 Comments