

V&V Reference Report

L2 ASCDS Version : 8.4.3

Observation 5732 - L2 Version 2
Chandra X-Ray Center

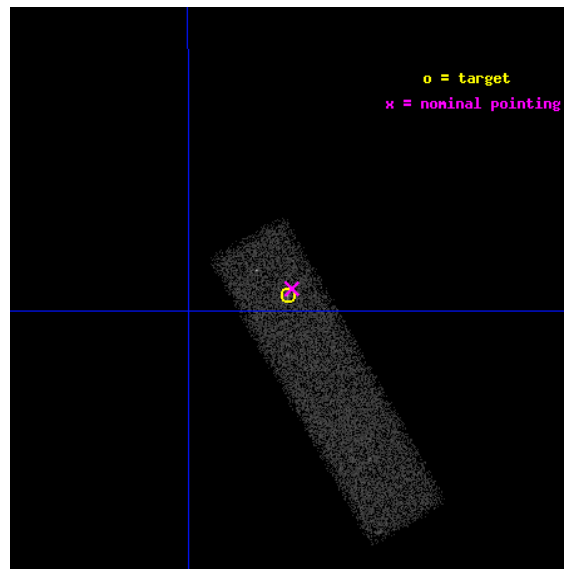
L2 Processing Date : Mar 18 2012

Contents

1	Front	2
2	OBI	3
2.1	OBI	3
2.1.1	Images	3
2.1.2	Bias	3
2.1.3	Parameters	4
2.1.4	Events	4
2.2	Compared Parameters	5
2.3	Aspect	6
2.4	Star Slots	9
2.4.1	Slot 3	9
2.4.2	Slot 4	10
2.4.3	Slot 5	11
2.4.4	Slot 6	12
2.4.5	Slot 7	13
2.5	FID Slots	14
2.5.1	Slot 0	14
2.5.2	Slot 1	15
2.5.3	Slot 2	16
A	Summary	17
A.1	Status	17
A.2	Comments	17

1 Front

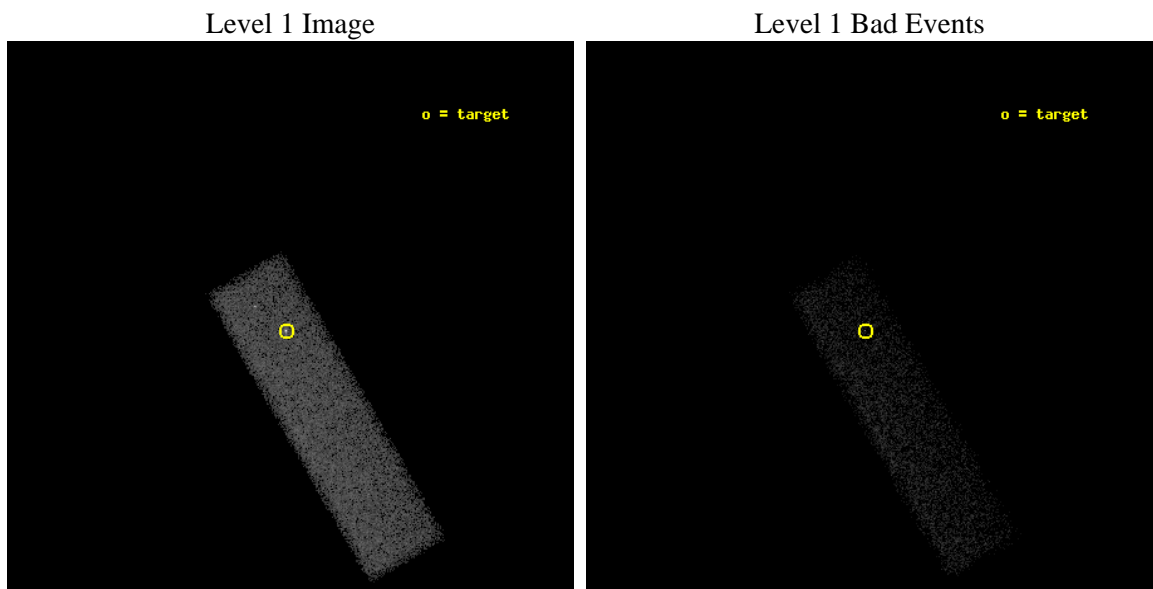
seq_num	701154	Sequence number
obs_id	5732	Observation id
title	A Study of the Physics of Extended Relativistic X-ray Jets, Discovered in our Chandra Survey	Proposal title
observer	Dr. Jonathan Gelbord	Principal investigator
object	PKS 0920-397	Source name
dtcycle	0	
cycle	P	events from which exps? Prim/Second/Both
ra_targ	140.693333	Observer's specified target RA [deg]
dec_targ	-39.993083	Observer's specified target Dec [deg]
ra_nom	140.6909952276	Nominal RA [deg]
dec_nom	-39.990629145577	Nominal Dec [deg]
roll_nom	60.048566977712	Nominal Roll [deg]
revision	2	Processing version of data
ontime	17642.400262892	Sum of GTIs [s]
livetime	16781.508858454	Livetime [s]
ontime7	17642.400262892	Sum of GTIs [s]
l2events	22816	Number of level 2 events



2 OBI

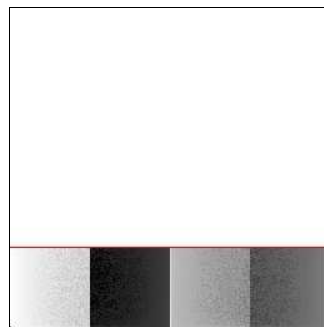
2.1 OBI

2.1.1 Images



2.1.2 Bias

Chip 7



2.1.3 Parameters

obi_num	1	Obi number	sched_exp_time	17500.000000	[s] Scheduled observation exposure time
ascdsver	8.4.3.1	Processing system revision	ontime	17642.400262892	Sum of GTIs [s]
caldsver	4.4.8	 	ontime7	17642.400262892	Sum of GTIs [s]
date	2012-03-18T09:29:47	Date and time of file creation	l1events	52781	Number of level 1 events
revision	2	Processing version of data			

2.1.4 Events

	ccd 7
level 1 events	52781
rejected events	29407
rejected %	55%

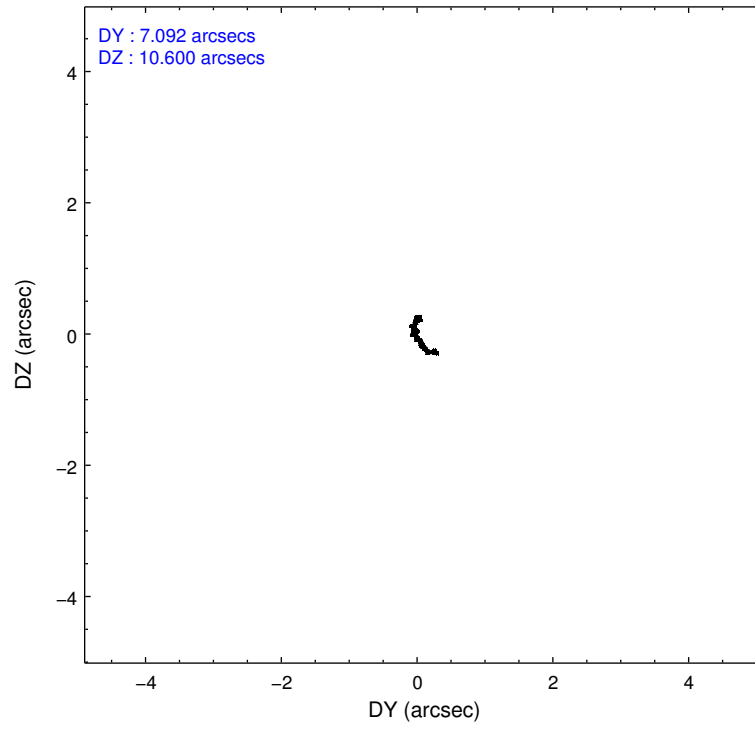
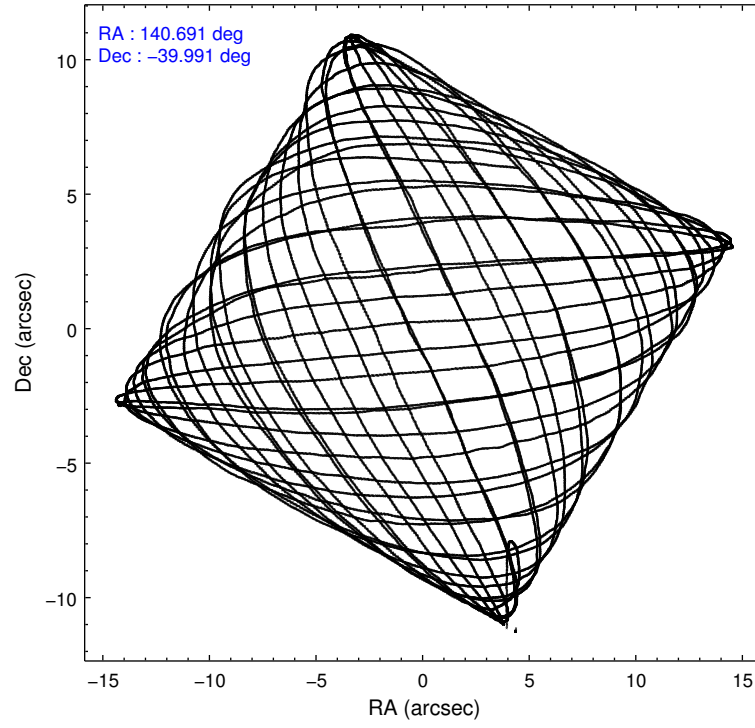
	ccd 7
grade 0 events	2468
	4%
grade 1 events	54
	0%
grade 2 events	4923
	9%
grade 3 events	2608
	4%
grade 4 events	2544
	4%
grade 5 events	4685
	8%
grade 6 events	11959
	22%
grade 7 events	23540
	44%

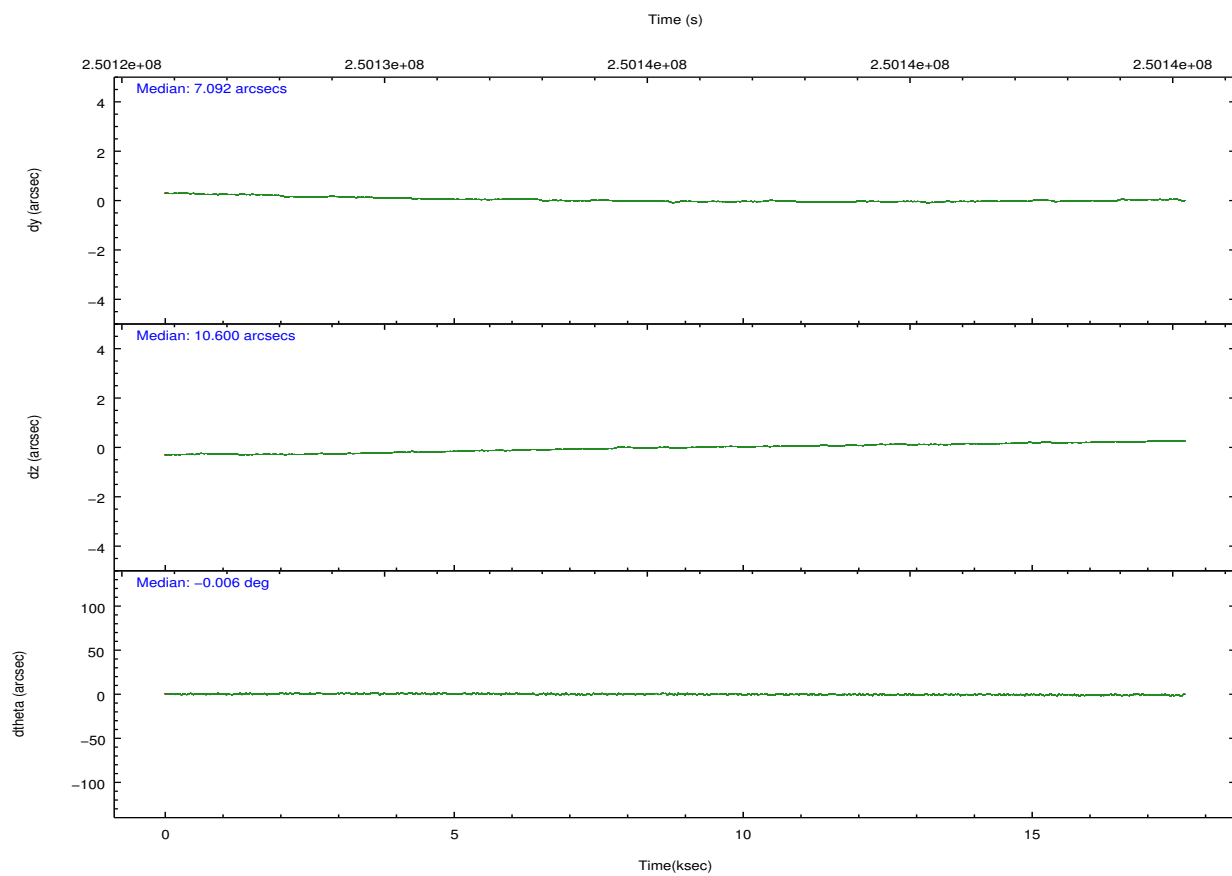
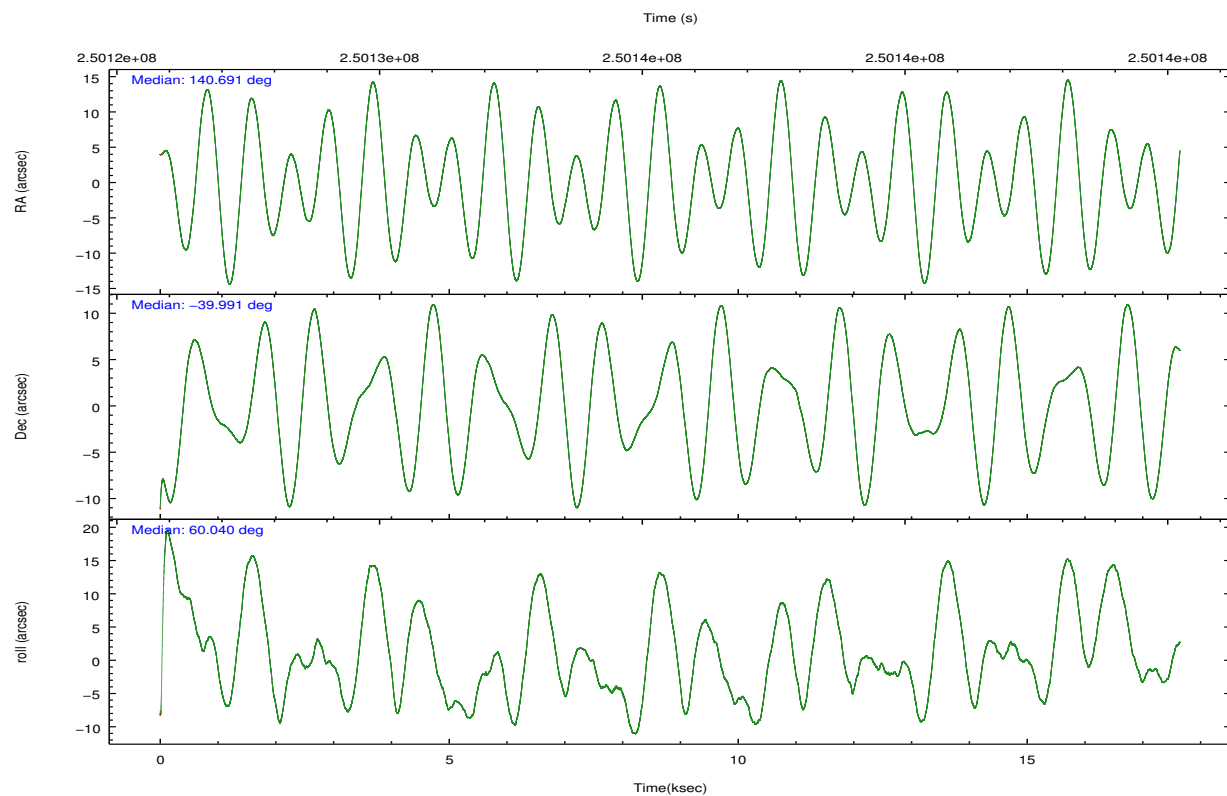
2.2 Compared Parameters

Parameter	Planned	Actual
Instrument	ACIS	ACIS
Detector	ACIS-7	ACIS-7
Grating	NONE	NONE
Data mode	FAINT	FAINT
Observation mode	POINTING	POINTING
[deg] Pointing RA	140.691538	140.6909952276031
[deg] Pointing Dec	-40.017842	-39.99062914557708
[deg] Pointing Roll	59.892307	60.04856697771244
[mm] SIM focus pos	-0.684267	-0.6828225247311905
[mm] SIM defocus	0	0.001444936568705701
[mm] SIM translation stage pos	-179.932523	-179.9244029796336
[mm] SIM translation stage offset	-10.2	-10.2081196033742
[s] Observation start time (MET)	250126847.184000	250125761.4704
Observation start date	2005-12-04T23:39:43	2005-12-04T23:22:41
[s] Observation end time (MET)	250144347.184000	250145440.44631
Observation end date	2005-12-05T04:31:23	2005-12-05T04:50:40
Read mode	TIMED	TIMED

Parameter	Planned	Actual
Obspar format version number	7	7
Obspar file type	PREDICTED	ACTUAL
Obspar update status	NONE	UPDATED
Number of optional ACIS chips dropped	0	0
On-chip summing requested	N	N
Subarray requested	CUSTOM	1/4
Subarray start row	1	1
Subarray row count	256	256
Alternating exposures requested	N	N
[s] Primary exposure time	0.000000	0.8

2.3 Aspect



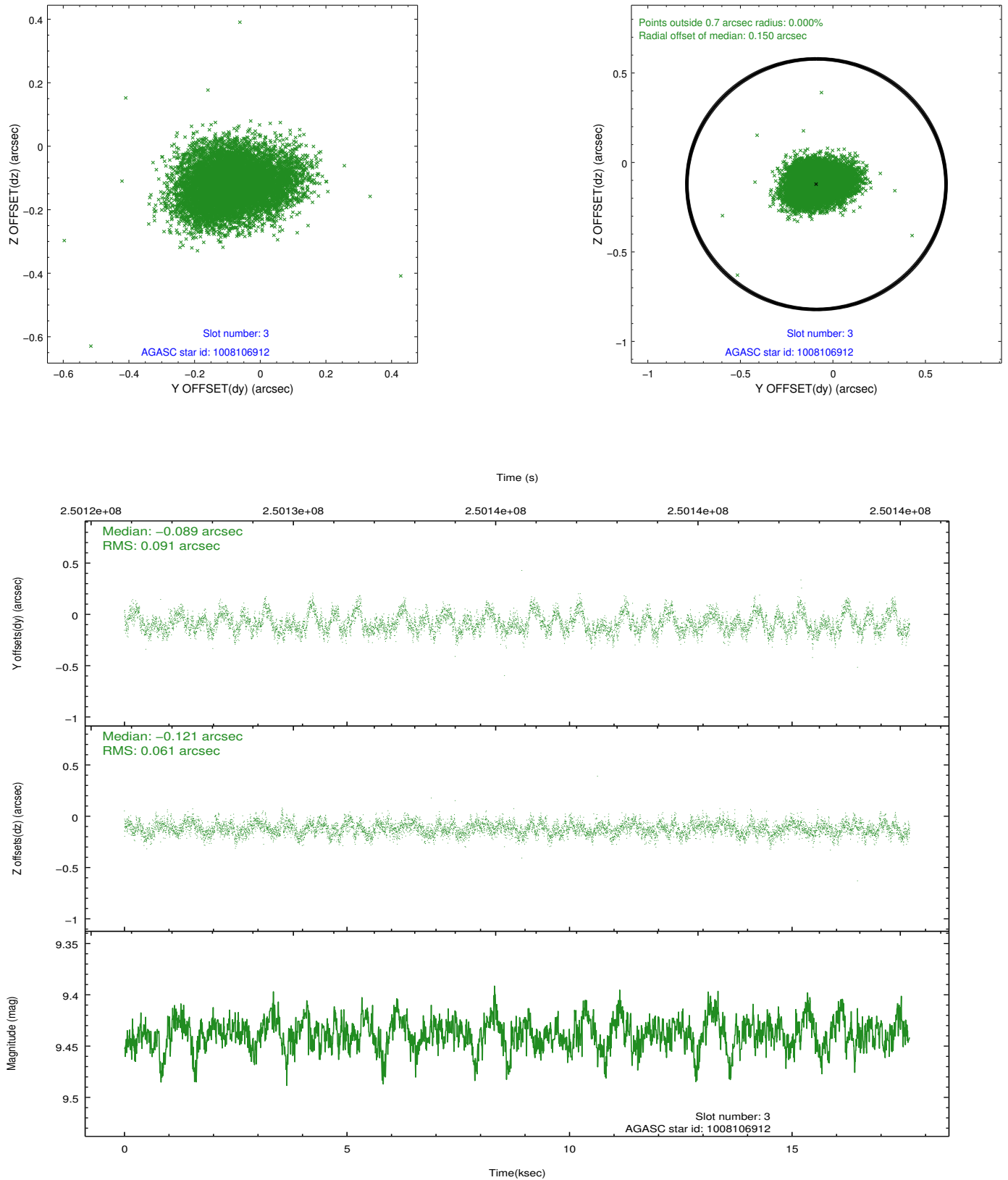


Slot Statistics

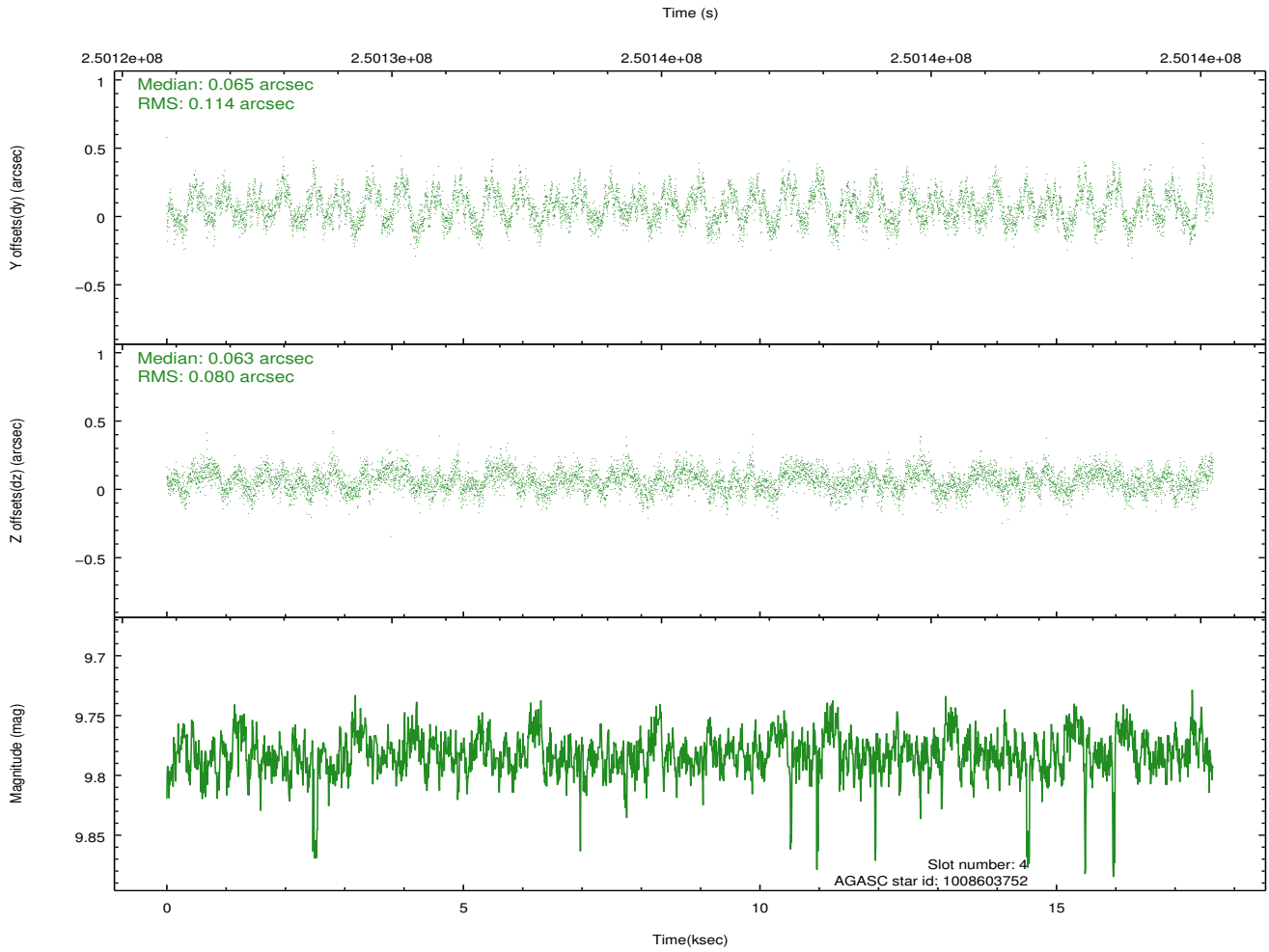
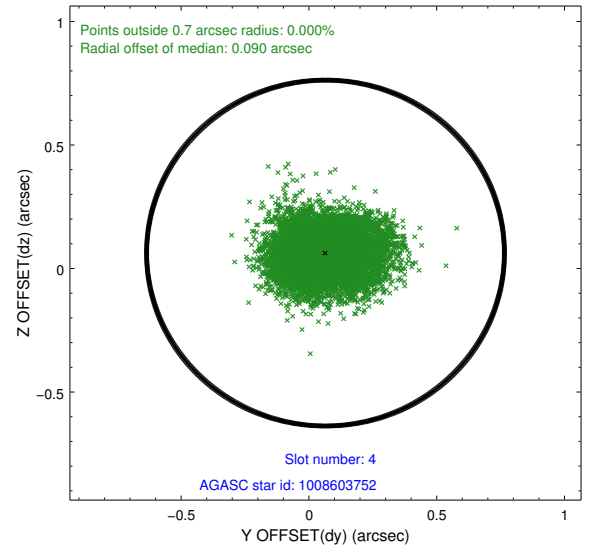
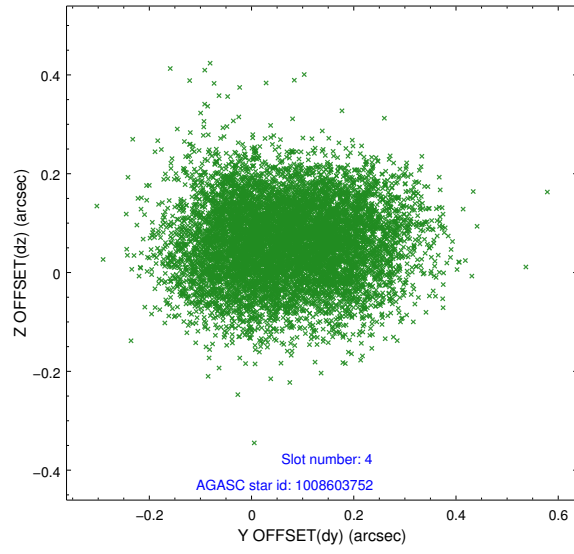
slot	status	id	mag	n_pts	med_dy	med_dz	dr1	dr2	ra	dec	mean_y	mean_z
0	FID	ACIS-S-1	7.19	4303	0.031	0.204	0.012	0.020	0.000000	0.000000	936.97	-1937.44
1	FID	ACIS-S-2	7.08	4303	-0.184	-0.217	0.013	0.026	0.000000	0.000000	-759.02	-1942.73
2	FID	ACIS-S-6	7.42	4304	0.134	0.016	0.010	0.016	0.000000	0.000000	402.58	603.40
3	GUIDE	1008106912	9.44	8599	-0.089	-0.121	0.116	0.189	140.582590	-39.253540	2227.98	1643.29
4	GUIDE	1008603752	9.78	8482	0.065	0.063	0.149	0.237	141.728820	-39.898451	1795.71	-2270.34
5	GUIDE	1008610064	8.91	8602	-0.024	0.141	0.083	0.137	141.362695	-40.226184	271.48	-1975.31
6	GUIDE	1008631096	7.54	8607	-0.071	-0.184	0.073	0.119	140.384695	-39.696088	574.70	1315.55
7	GUIDE	1008618944	8.81	8604	0.107	0.111	0.070	0.116	140.708087	-40.765098	-2303.80	-1389.02

2.4 Star Slots

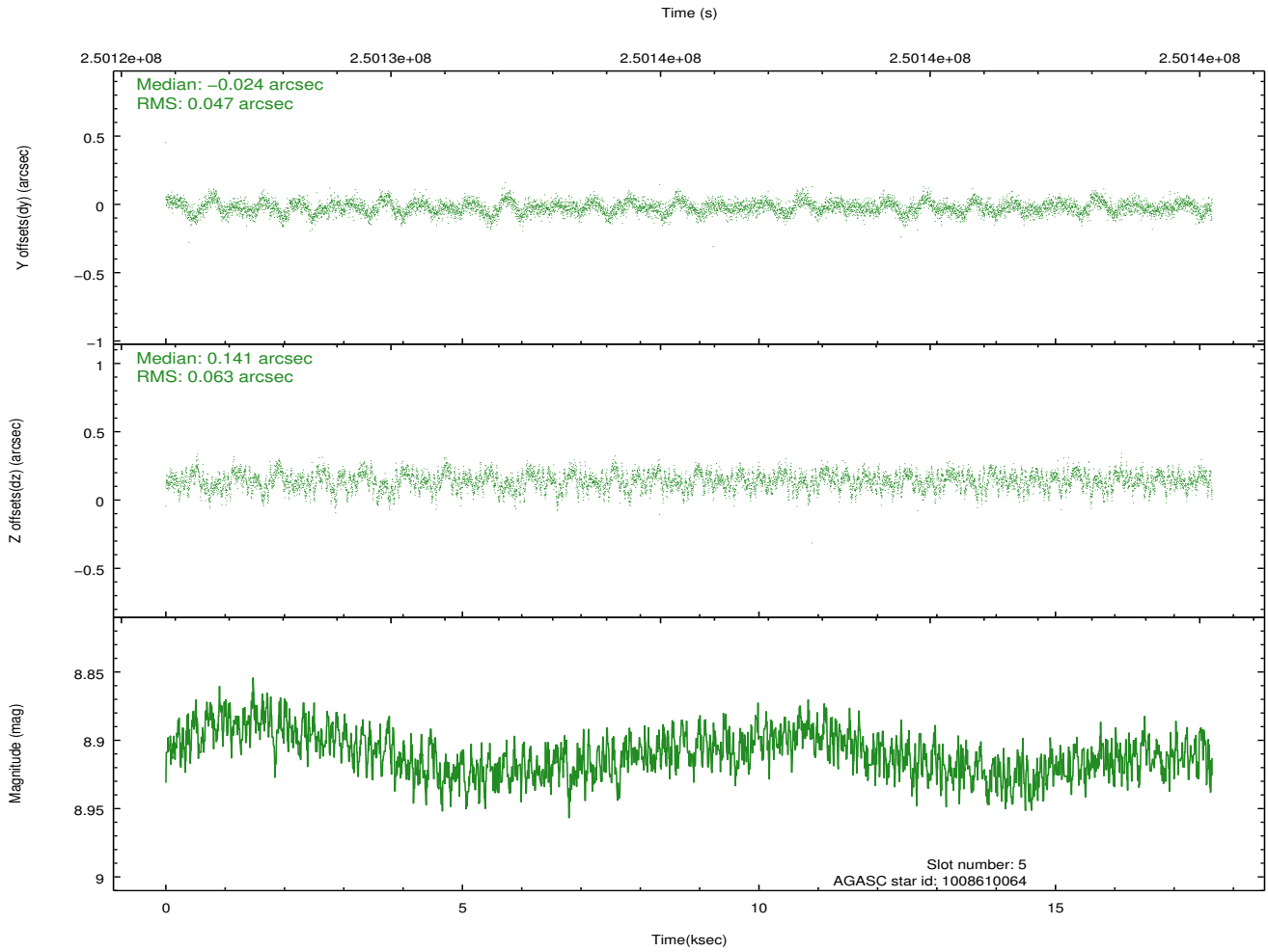
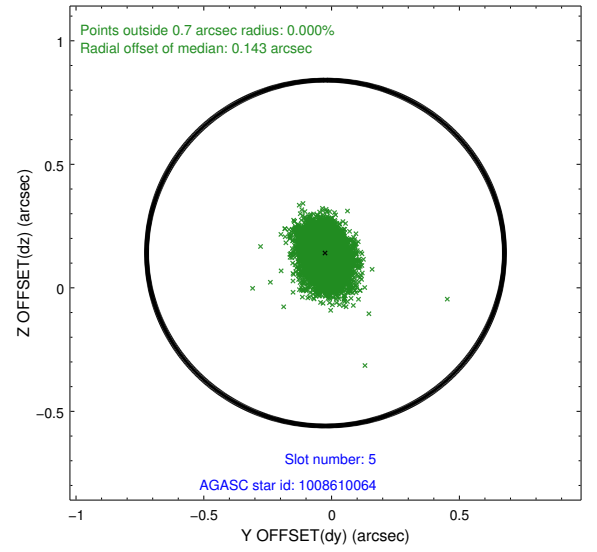
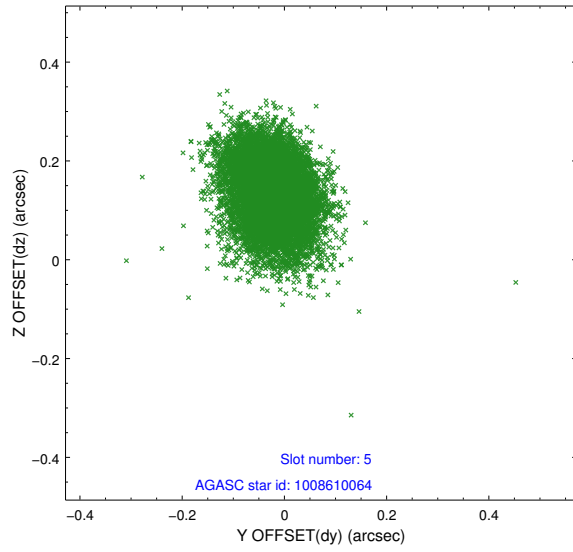
2.4.1 Slot 3



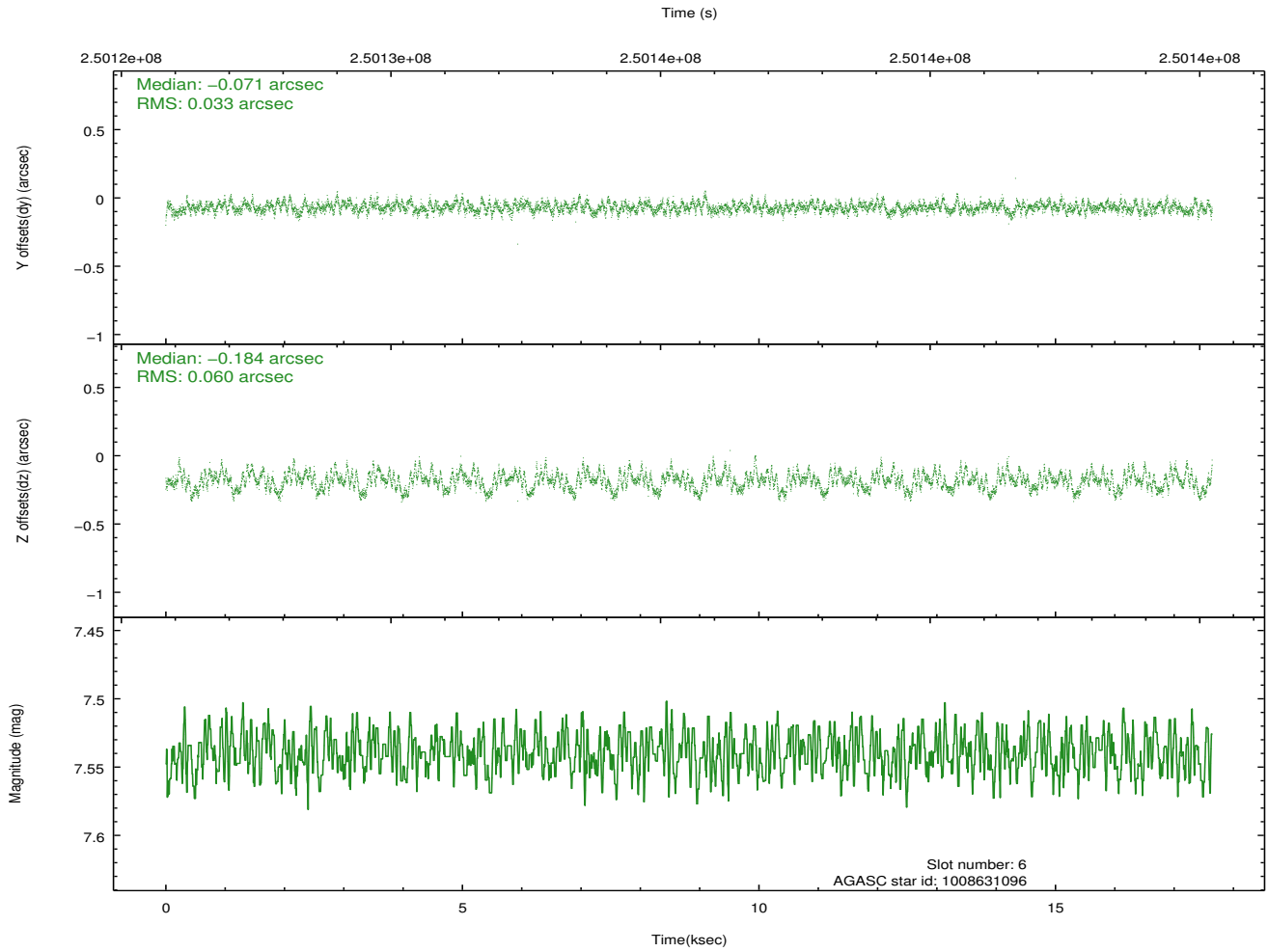
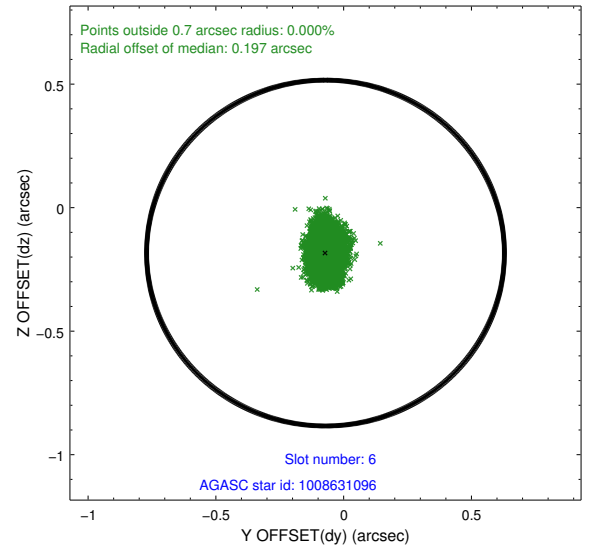
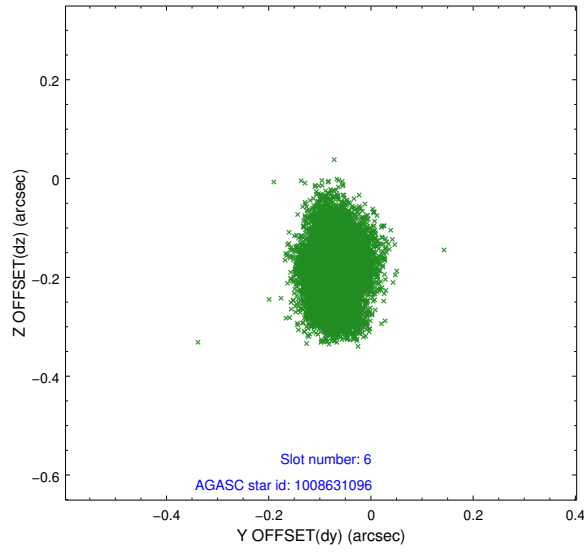
2.4.2 Slot 4



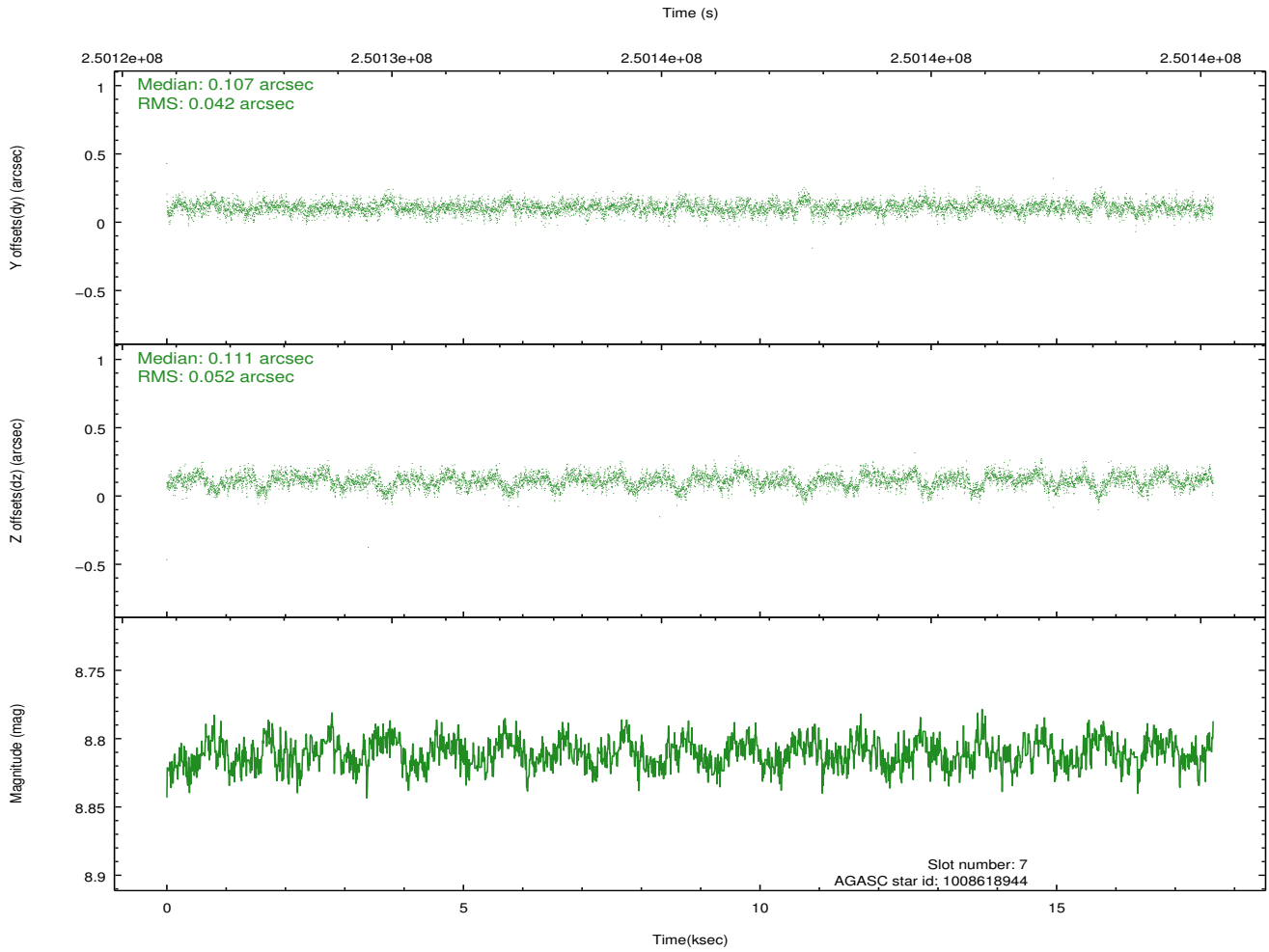
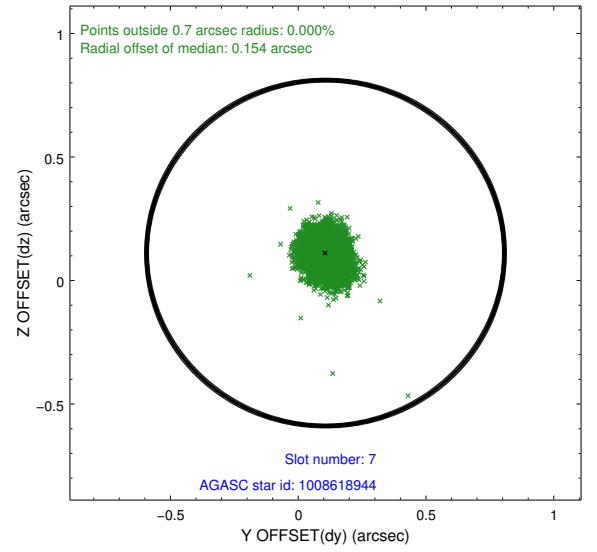
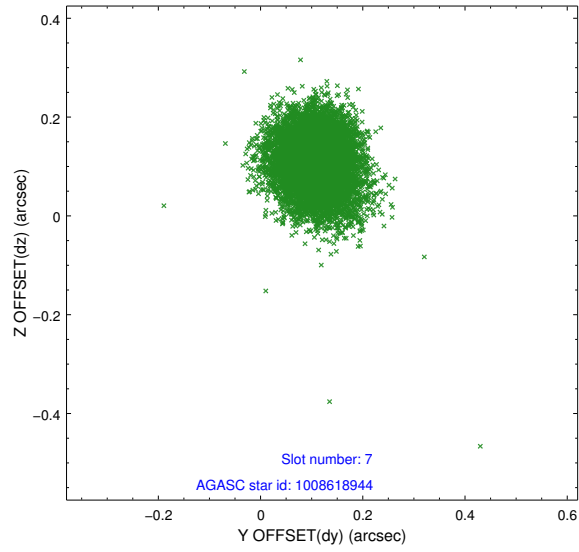
2.4.3 Slot 5



2.4.4 Slot 6

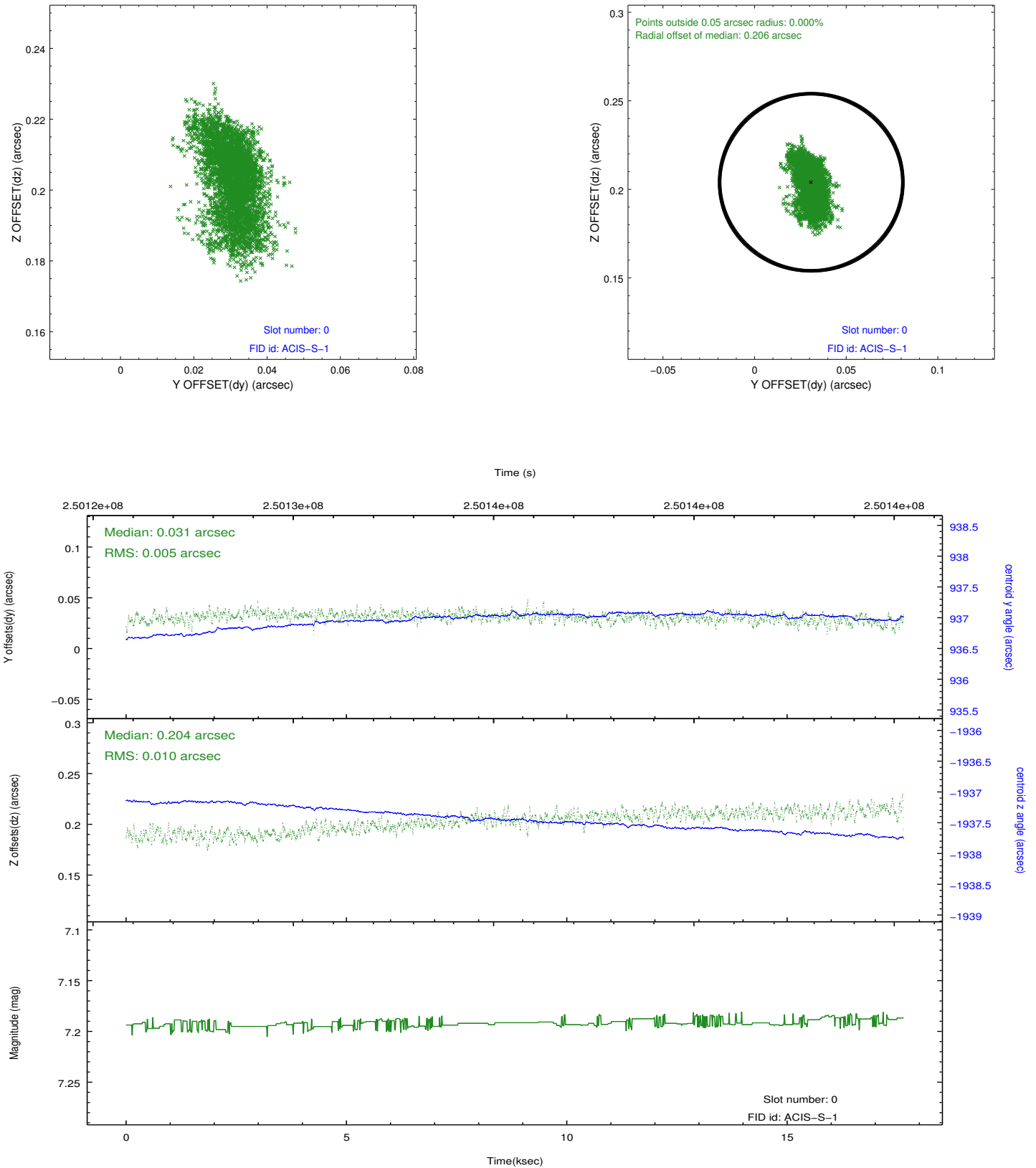


2.4.5 Slot 7

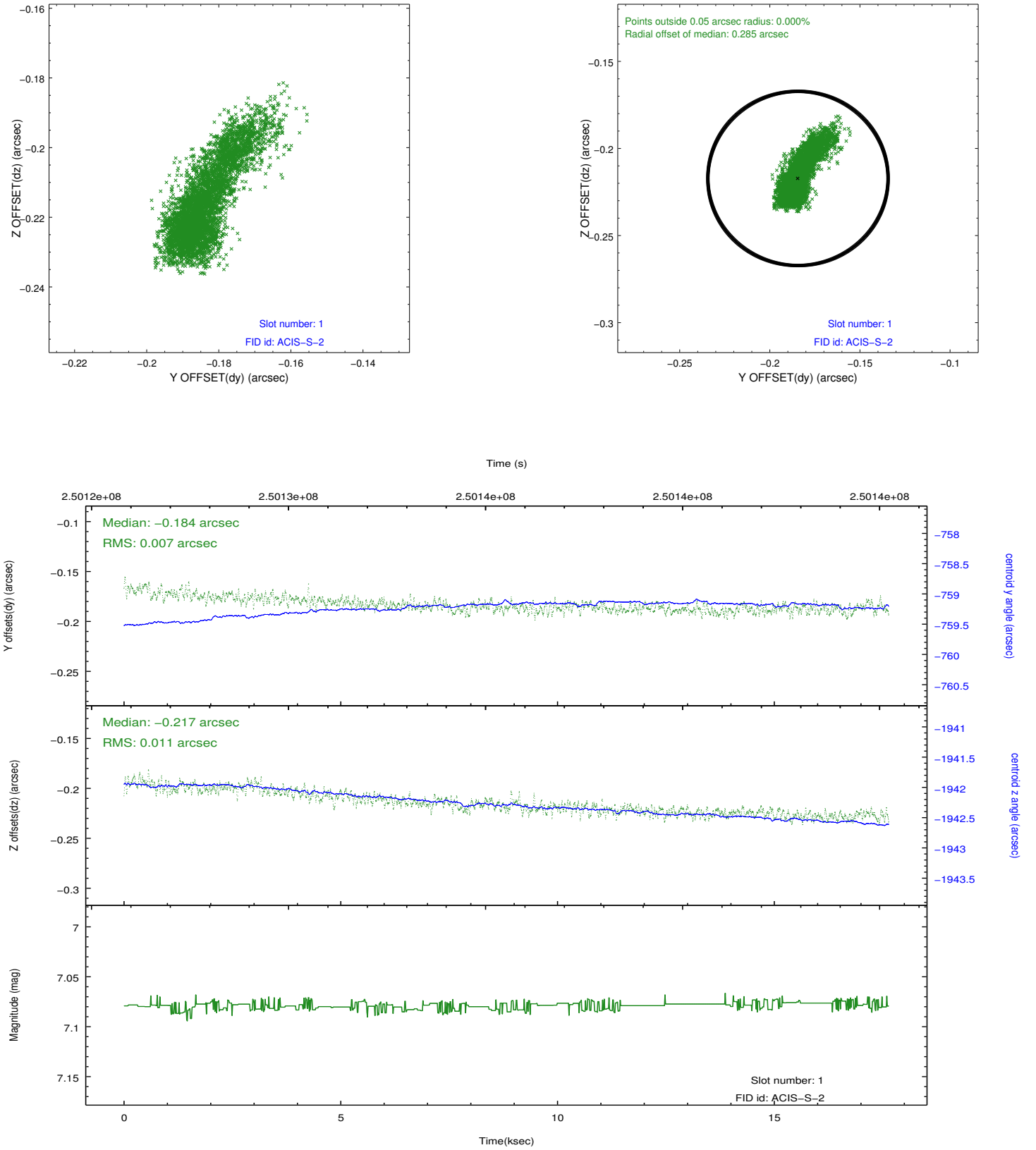


2.5 FID Slots

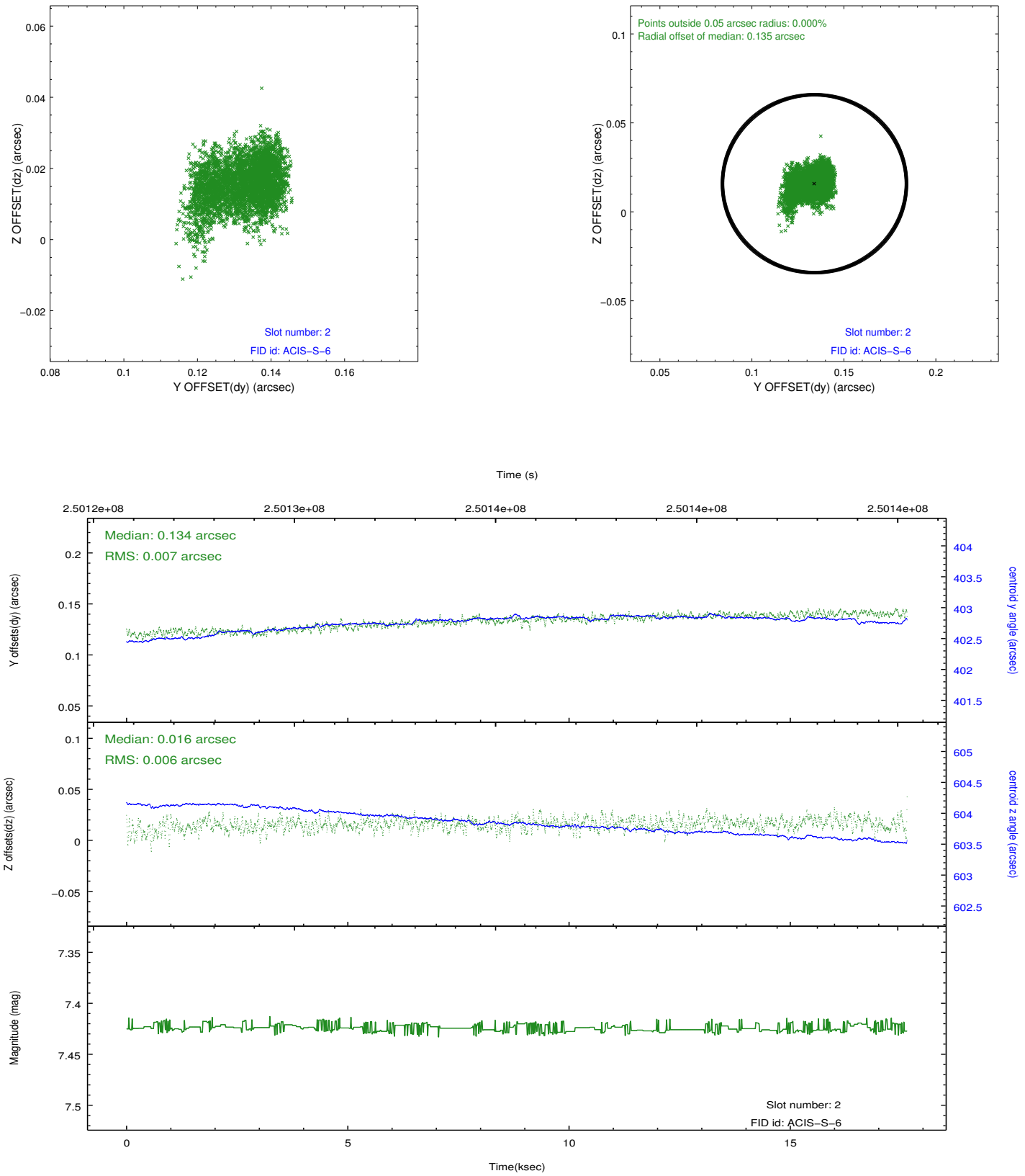
2.5.1 Slot 0



2.5.2 Slot 1



2.5.3 Slot 2



A Summary

A.1 Status

V&V Scientist	Jen Lauer
V&V Date (YYYY-MM-DD)	2012.03.19
V&V Edition	1
V&V Disposition and Status	OK
V&V Charge Time	17.6424

A.2 Comments

Meets preferred roll angle requested by PI.