

# V&V Reference Report

## L2 ASCDS Version : 8.4.5

Observation 56902 - L2 Version 2  
Chandra X-Ray Center

L2 Processing Date : Jun 11 2012

## Contents

<b>1</b>	<b>Front</b>	<b>2</b>
<b>2</b>	<b>OBI</b>	<b>3</b>
2.1	OBI . . . . .	3
2.1.1	Images . . . . .	3
2.1.2	Bias . . . . .	3
2.1.3	Parameters . . . . .	4
2.1.4	Events . . . . .	4
2.2	Compared Parameters . . . . .	5
2.3	Star Slots . . . . .	6
2.4	FID Slots . . . . .	6
<b>A</b>	<b>Summary</b>	<b>7</b>
A.1	Status . . . . .	7
A.2	Comments . . . . .	7

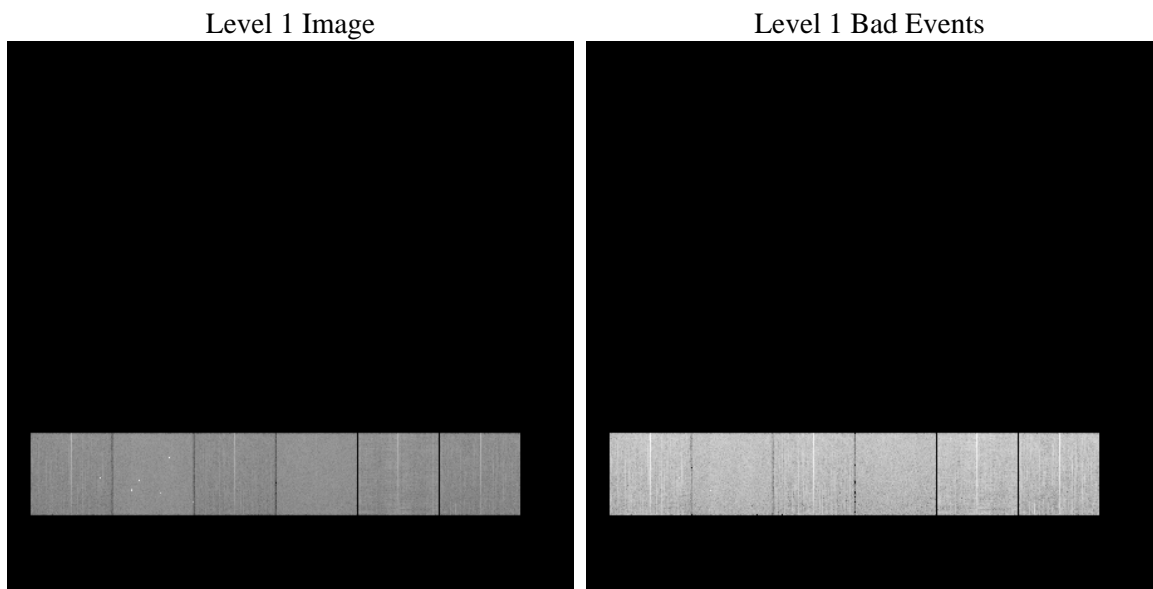
# 1 Front

seq_num	&#160	Sequence number
obs_id	56902	Observation id
title	ACIS-456789 diagnostics	Proposal title
observer	CHANDRA engineering request/realtime commanding	Principal investig
object	&#160	Source name
dtcycle	0	&#160
cycle	P	events from which exps? Prim/Second/Both
ra_targ	0.0	Observer's specified target RA [deg]
dec_targ	0.0	Observer's specified target Dec [deg]
ra_nom	280.03358716447	Nominal RA [deg]
dec_nom	-40.017496612715	Nominal Dec [deg]
roll_nom	293.87666940274	Nominal Roll [deg]
revision	2	Processing version of data
ontime	8271.3579503894	Sum of GTIs [s]
livetime	8166.6210356077	Livetime [s]
ontime4	8271.2348303795	Sum of GTIs [s]
ontime5	8271.3169103861	Sum of GTIs [s]
ontime6	8271.2758703828	Sum of GTIs [s]
ontime7	8271.3579503894	Sum of GTIs [s]
ontime8	8271.1937903762	Sum of GTIs [s]
ontime9	8271.3989903927	Sum of GTIs [s]
l2events	502574	Number of level 2 events

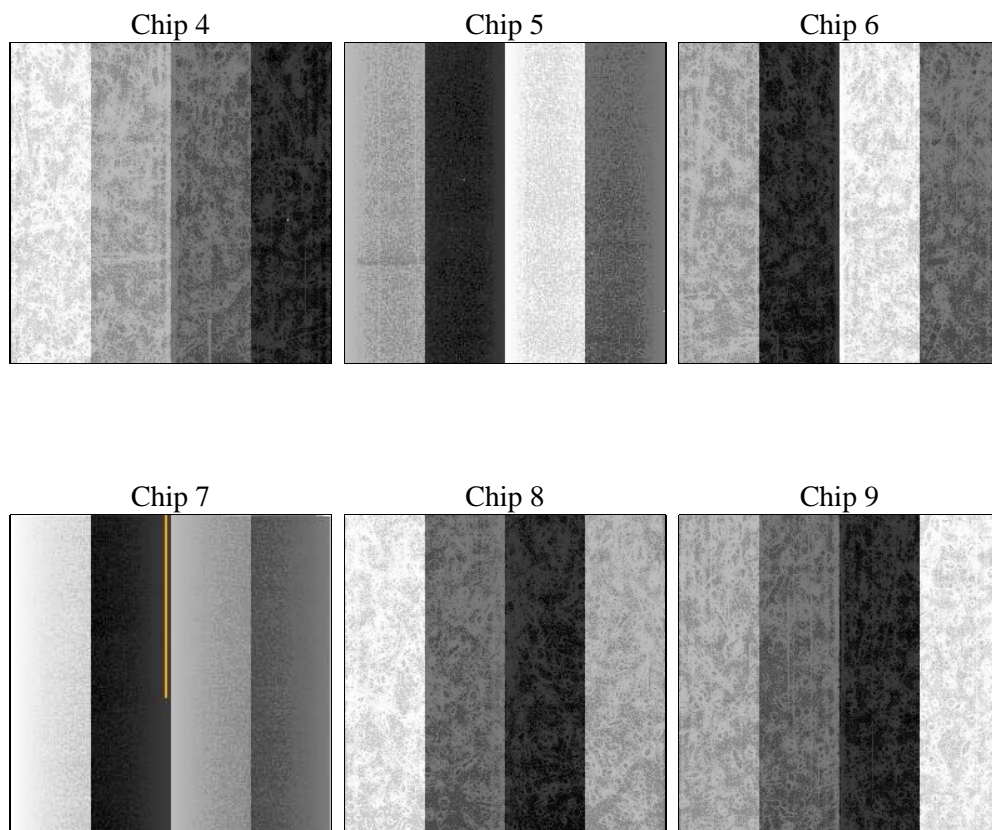
## 2 OBI

### 2.1 OBI

#### 2.1.1 Images



#### 2.1.2 Bias



### 2.1.3 Parameters

obi_num	2	Obi number	sched_exp_time	0.0	[s] Scheduled observation exposure time
ascdsver	8.4.5	Processing system revision	ontime	8271.3579503894	Sum of GTIs [s]
caldsver	4.4.10	&#160	ontime4	8271.2348303795	Sum of GTIs [s]
date	2012-06-11T16:16:02	Date and time of file creation	ontime5	8271.3169103861	Sum of GTIs [s]
revision	2	Processing version of data	ontime6	8271.2758703828	Sum of GTIs [s]
			ontime7	8271.3579503894	Sum of GTIs [s]
			ontime8	8271.1937903762	Sum of GTIs [s]
			ontime9	8271.3989903927	Sum of GTIs [s]
			l1events	1032395	Number of level 1 events

### 2.1.4 Events

	ccd 4	ccd 5	ccd 6	ccd 7	ccd 8	ccd 9		ccd 4	ccd 5	ccd 6	ccd 7	ccd 8	ccd 9
level 1 events	159774	193830	157299	183826	180419	157247	grade 0 events	43537	21075	41002	21158	45143	40272
rejected events	84581	74539	79341	70393	87622	81923		27%	10%	26%	11%	25%	25%
rejected %	52%	38%	50%	38%	48%	52%	grade 1 events	456	355	299	151	296	304
								0%	0%	0%	0%	0%	0%
							grade 2 events	11736	40740	13970	24799	17438	12993
								7%	21%	8%	13%	9%	8%
							grade 3 events	5176	5284	5151	10360	7053	5133
								3%	2%	3%	5%	3%	3%
							grade 4 events	5081	5229	5153	10455	6731	5121
								3%	2%	3%	5%	3%	3%
							grade 5 events	4358	9892	4583	11317	5954	4915
								2%	5%	2%	6%	3%	3%
							grade 6 events	9691	47009	12716	46699	16464	11841
								6%	24%	8%	25%	9%	7%
							grade 7 events	79739	64246	74425	58887	81340	76668
								49%	33%	47%	32%	45%	48%

## 2.2 Compared Parameters

Parameter	Planned	Actual	Parameter	Planned	Actual
Instrument	ACIS	ACIS	Obspar format version number	7	7
Detector	ACIS-456789	ACIS-456789	Obspar file type	PREDICTED	ACTUAL
Grating	NONE	NONE	Obspar update status	NONE	UPDATED
Data mode	FAINT	FAINT	Number of optional ACIS chips dropped	0	0
Observation mode	SECONDARY	SECONDARY	On-chip summing requested	N	N
[deg] Pointing RA	0	280.0335871644729	Subarray requested	NONE	NONE
[deg] Pointing Dec	0	-40.01749661271525	Alternating exposures requested	N	N
[deg] Pointing Roll	0.0	293.8766694027378	[s] Primary exposure time	3.2	3.2
[mm] SIM focus pos	-1.429586	-0.6828225247311905			
[mm] SIM defocus	0.1037507710433287	0.8505141146731063			
[mm] SIM translation stage pos	250.455976	250.466033080201			
[mm] SIM translation stage offset	0	-0.01005468664627074			
[s] Observation start time (MET)	366225251.071916	366225250.04691			
Observation start date	2009-08-09T17:14:11	2009-08-09T17:14:10			
[s] Observation end time (MET)	366235267.372417	366235266.34741			
Observation end date	2009-08-09T20:01:07	2009-08-09T20:01:06			
Read mode	TIMED	TIMED			

## **2.3 Star Slots**

## **2.4 FID Slots**

## A Summary

### A.1 Status

V&V Scientist	Beth Sundheim
V&V Date (YYYY-MM-DD)	2012.06.14
V&V Edition	1
V&V Disposition and Status	OK
V&V Charge Time	8.2713579503894

### A.2 Comments