

V&V Reference Report

L2 ASCDS Version : 8.4.5

Observation 562 - L2 Version 6
Chandra X-Ray Center

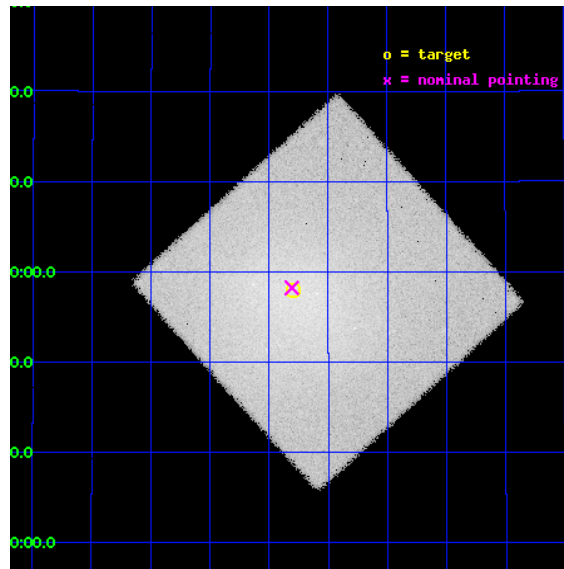
L2 Processing Date : Aug 22 2012

Contents

1	Front	2
2	OBI	3
2.1	OBI	3
2.1.1	Images	3
2.1.2	Parameters	4
2.1.3	Events	4
2.2	Compared Parameters	5
2.3	Aspect	6
2.4	Star Slots	9
2.4.1	Slot 3	9
2.4.2	Slot 4	10
2.4.3	Slot 5	11
2.4.4	Slot 6	12
2.4.5	Slot 7	13
2.5	FID Slots	14
2.5.1	Slot 0	14
2.5.2	Slot 1	15
2.5.3	Slot 2	16
A	Summary	17
A.1	Status	17
A.2	Comments	17

1 Front

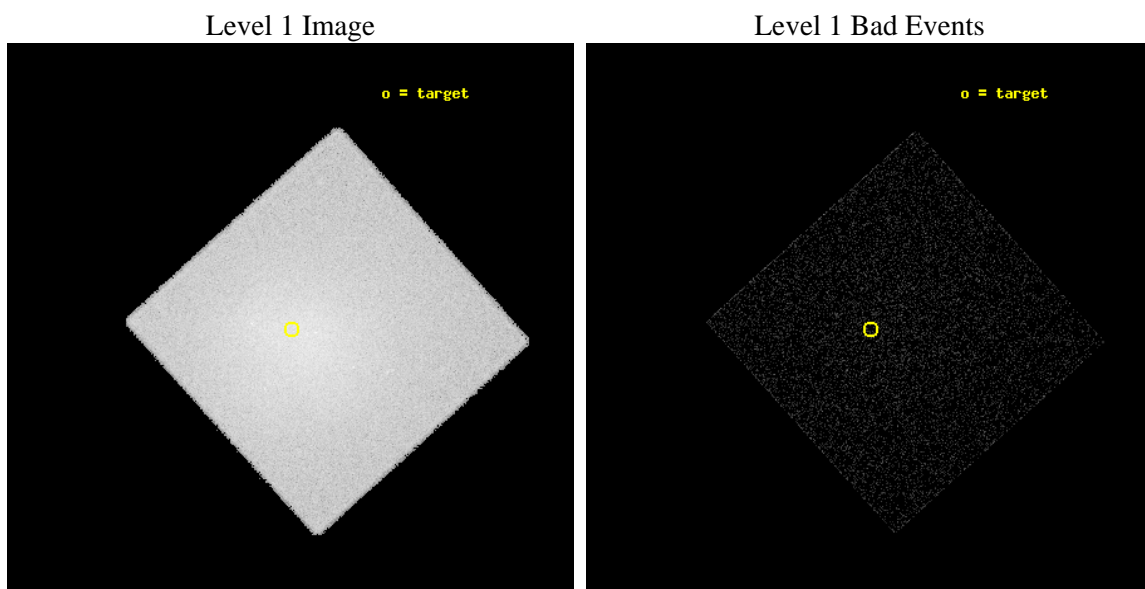
seq_num	890007	Sequence number
obs_id	562	Observation id
title	CALIBRATION OBSERVATION OF AN EXTENDED HARD SOURCE: THE COMA CLUSTER	
observer	Dr. CXC Calibration	Principal investigator
object	COMA CLUSTER	Source name
ra_targ	194.95	Observer's specified target RA [deg]
dec_targ	27.966667	Observer's specified target Dec [deg]
ra_nom	194.95189546093	Nominal RA [deg]
dec_nom	27.970834420932	Nominal Dec [deg]
roll_nom	92.903694634703	Nominal Roll [deg]
revision	6	Processing version of data
ontime	10216.431622557	[s]
livetime	10117.306336306	Ontime multiplied by DTCOR
l2events	473132	Number of level 2 events



2 OBI

2.1 OBI

2.1.1 Images



2.1.2 Parameters

obi_num	0	Obi number	sched_exp_time	9750.000000	[s] Scheduled observation exposure time
ascdsver	8.4.5	Processing system revision	ontime	10216.431622557	[s]
caldbver	4.5.1.1	 	l1events	695325	Number of level 1 events
date	2012-08-22T13:37:35	Date and time of file creation			
revision	6	Processing version of data			

2.1.3 Events

Level 1 Events

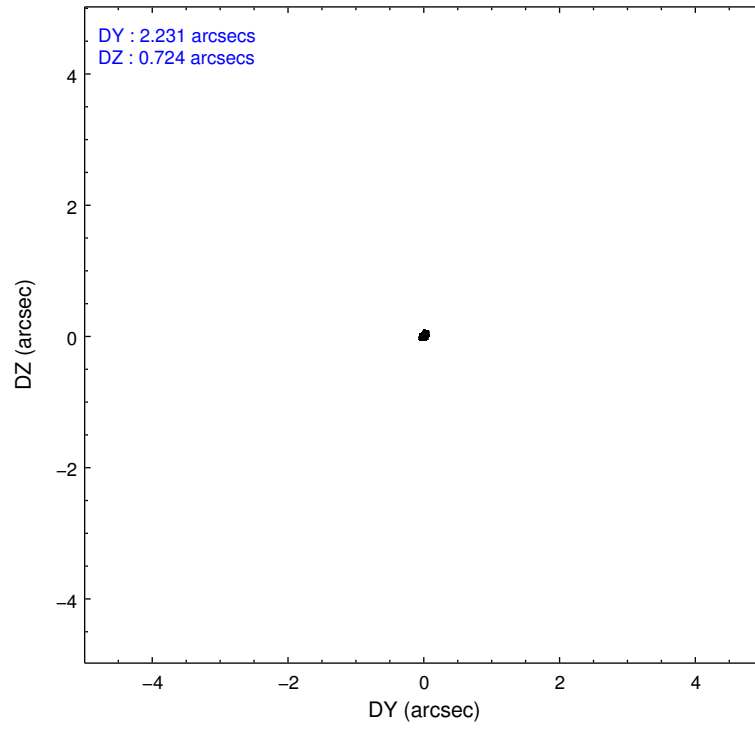
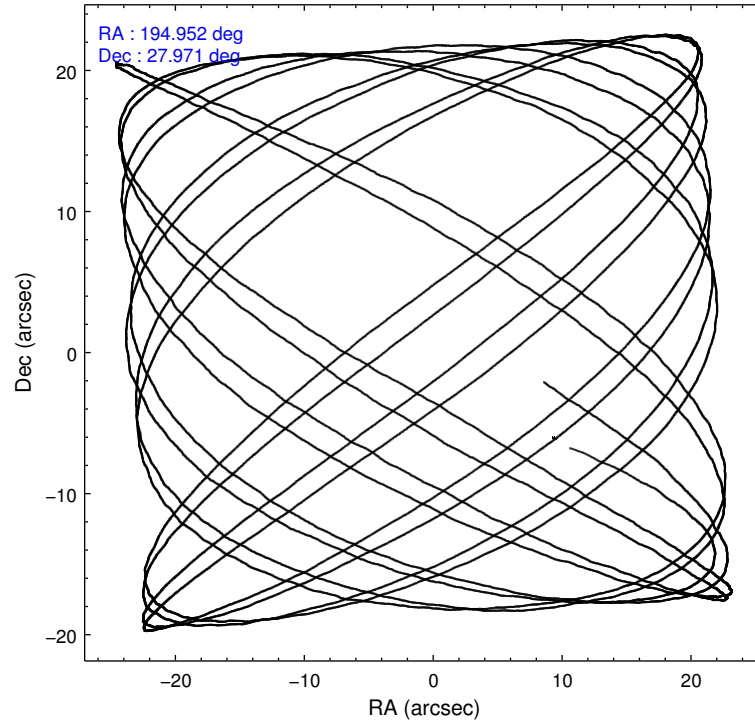
	segment 0
level 1 events	695325
rejected events	57737
rejected %	8%

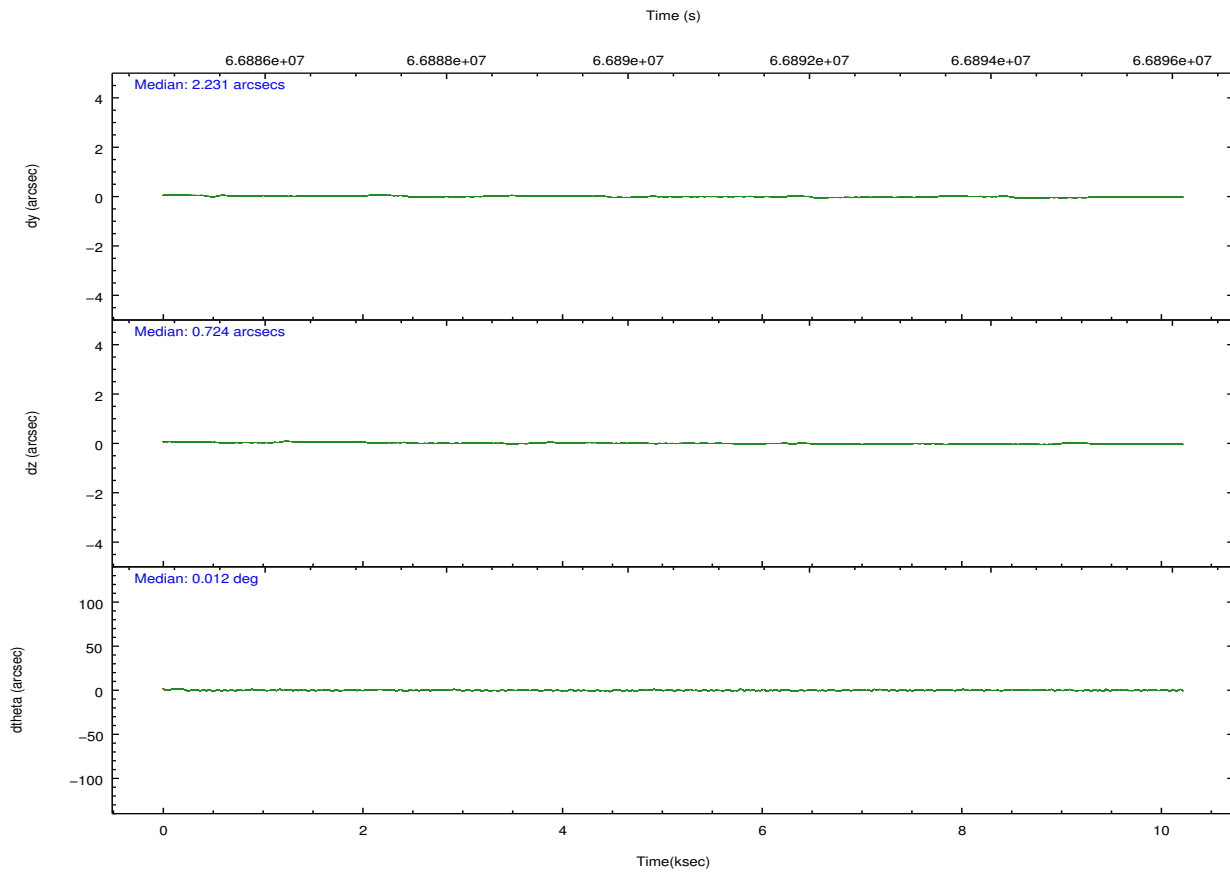
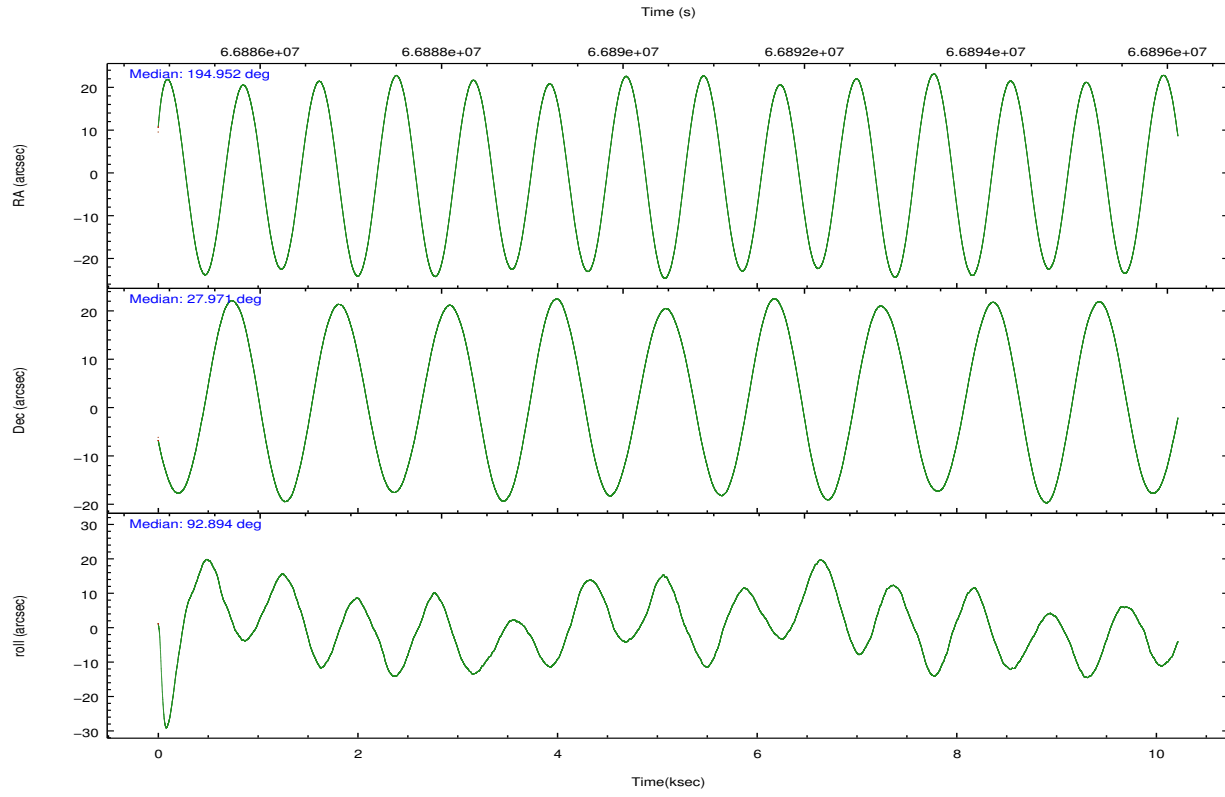
2.2 Compared Parameters

Parameter	Planned	Actual
Instrument	HRC	HRC
Detector	HRC-I	HRC-I
Grating	NONE	NONE
Data mode	OBSERVING	OBSERVING
Observation mode	POINTING	POINTING
[deg] Pointing RA	194.968855	194.9518954609308
[deg] Pointing Dec	27.948182	27.97083442093198
[deg] Pointing Roll	92.991164	92.90369463470282
[s] Window start time (MET)	65750464.184000	65750464.184000
[s] Window stop time (MET)	68256064.184000	68256064.184000
[mm] SIM focus pos	-1.040293	-1.038866356238299
[mm] SIM defocus	0	0.001426264420575141
[mm] SIM translation stage pos	115.265494	115.2788422612244
[mm] SIM translation stage offset	11.72	11.70664663037712
[s] Observation start time (MET)	66885855.184000	66885199.974016
Observation start date	2000-02-14T03:23:11	2000-02-14T03:13:19
[s] Observation end time (MET)	66895605.184000	66896653.836934
Observation end date	2000-02-14T06:05:41	2000-02-14T06:24:13

Parameter	Planned	Actual
Obspar format version number	7	7
Obspar file type	PREDICTED	ACTUAL
Obspar update status	NONE	UPDATED

2.3 Aspect



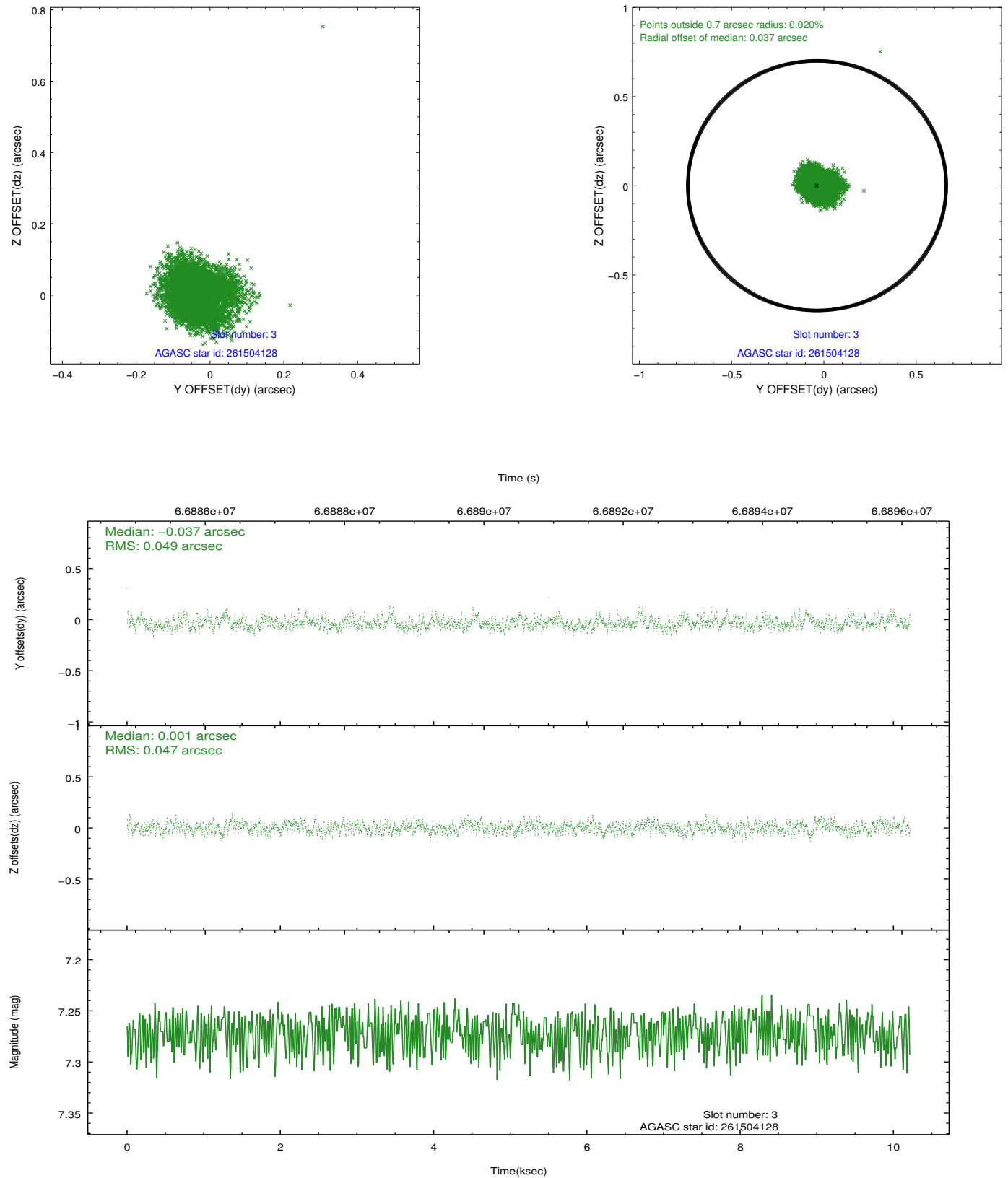


Slot Statistics

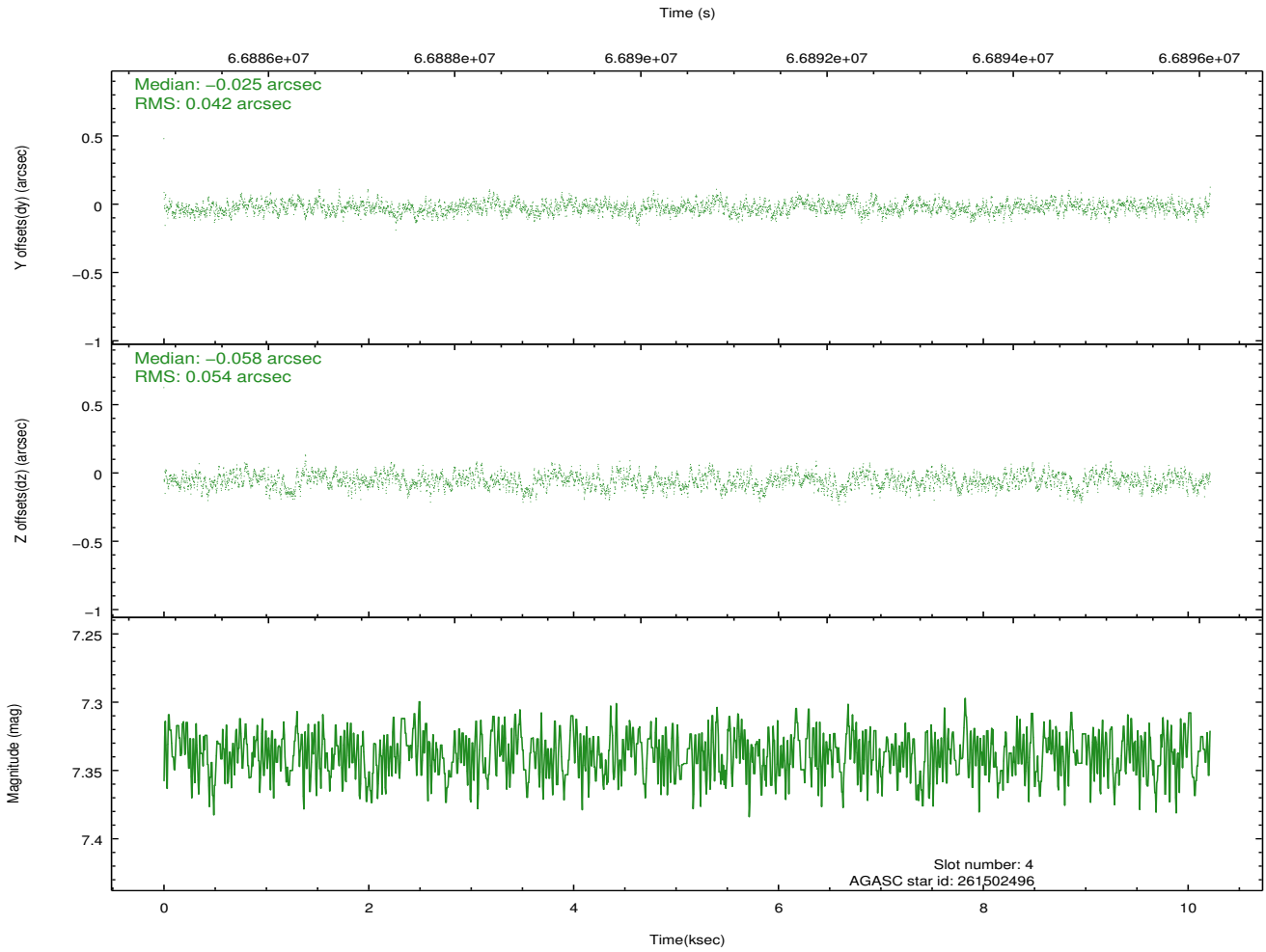
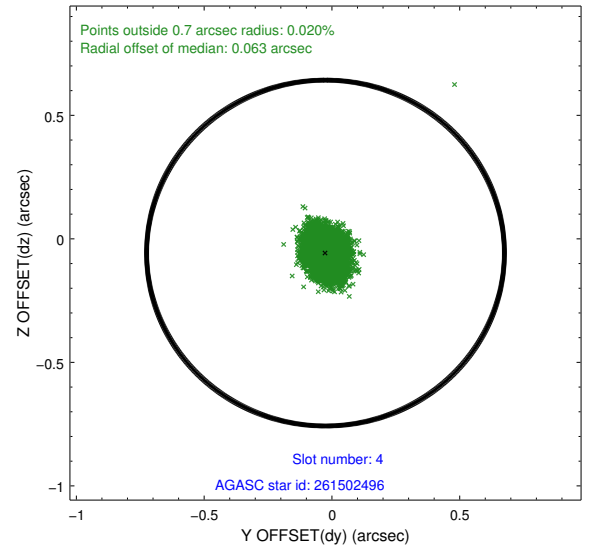
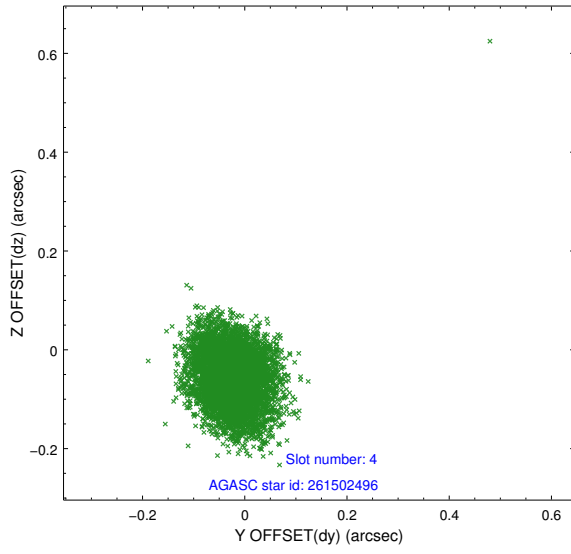
slot	status	id	mag	n_pts	med_dy	med_dz	dr1	dr2	ra	dec	mean_y	mean_z
0	FID	HRC-I-1	6.92	2493	-0.042	0.322	0.006	0.012	0.000000	0.000000	-757.34	-1048.67
1	FID	HRC-I-3	7.01	2493	0.052	-0.393	0.007	0.012	0.000000	0.000000	-1186.58	1256.06
2	FID	HRC-I-4	6.92	2493	0.105	-0.018	0.005	0.008	0.000000	0.000000	1284.58	1254.83
3	GUIDE	261504128	7.27	4984	-0.037	0.001	0.072	0.114	194.640935	28.319570	1391.35	969.00
4	GUIDE	261502496	7.34	4985	-0.025	-0.058	0.073	0.115	194.887297	28.065668	436.92	237.63
5	GUIDE	261498392	8.31	4982	0.021	-0.039	0.059	0.095	194.888587	28.238913	1059.38	200.55
6	GUIDE	261494640	9.93	4978	-0.086	0.184	0.124	0.199	195.174515	28.510071	1987.63	-753.99
7	GUIDE	261505232	9.82	4981	0.118	-0.086	0.125	0.205	194.216553	27.802521	-390.50	2419.80

2.4 Star Slots

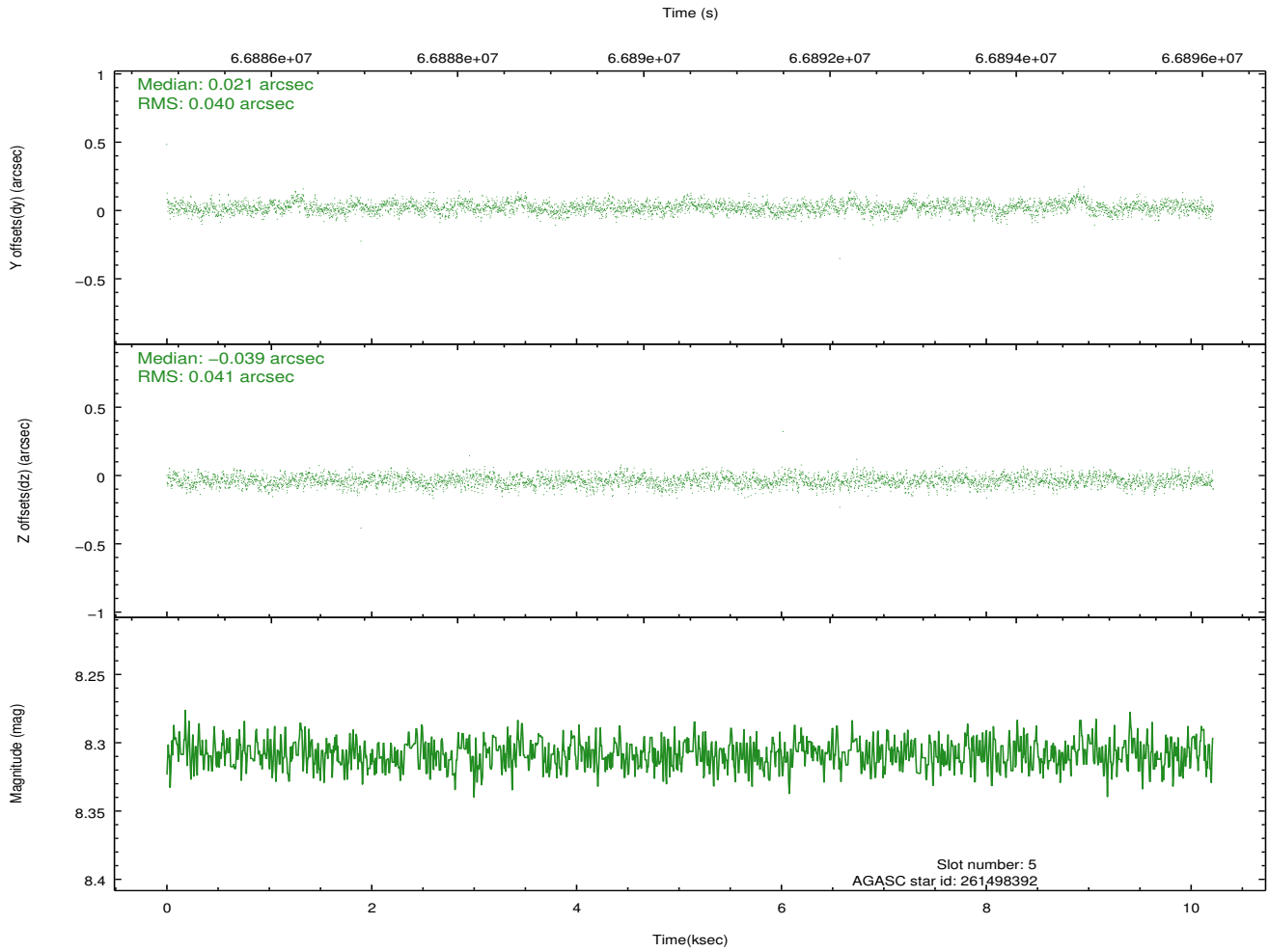
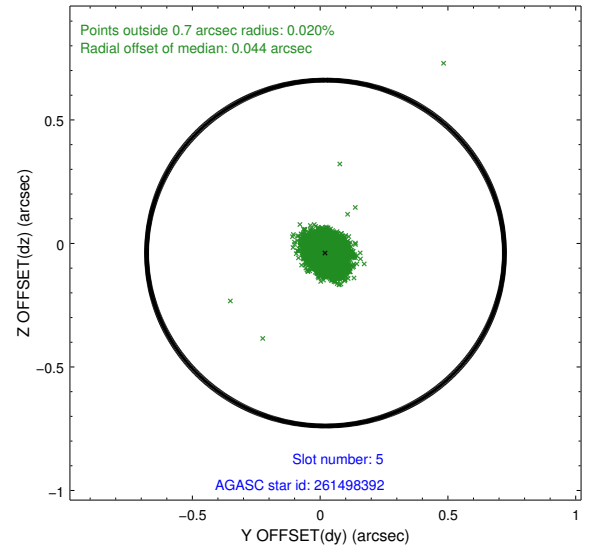
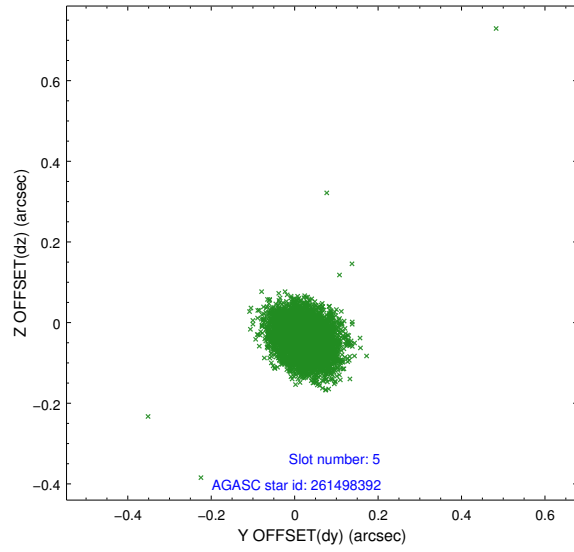
2.4.1 Slot 3



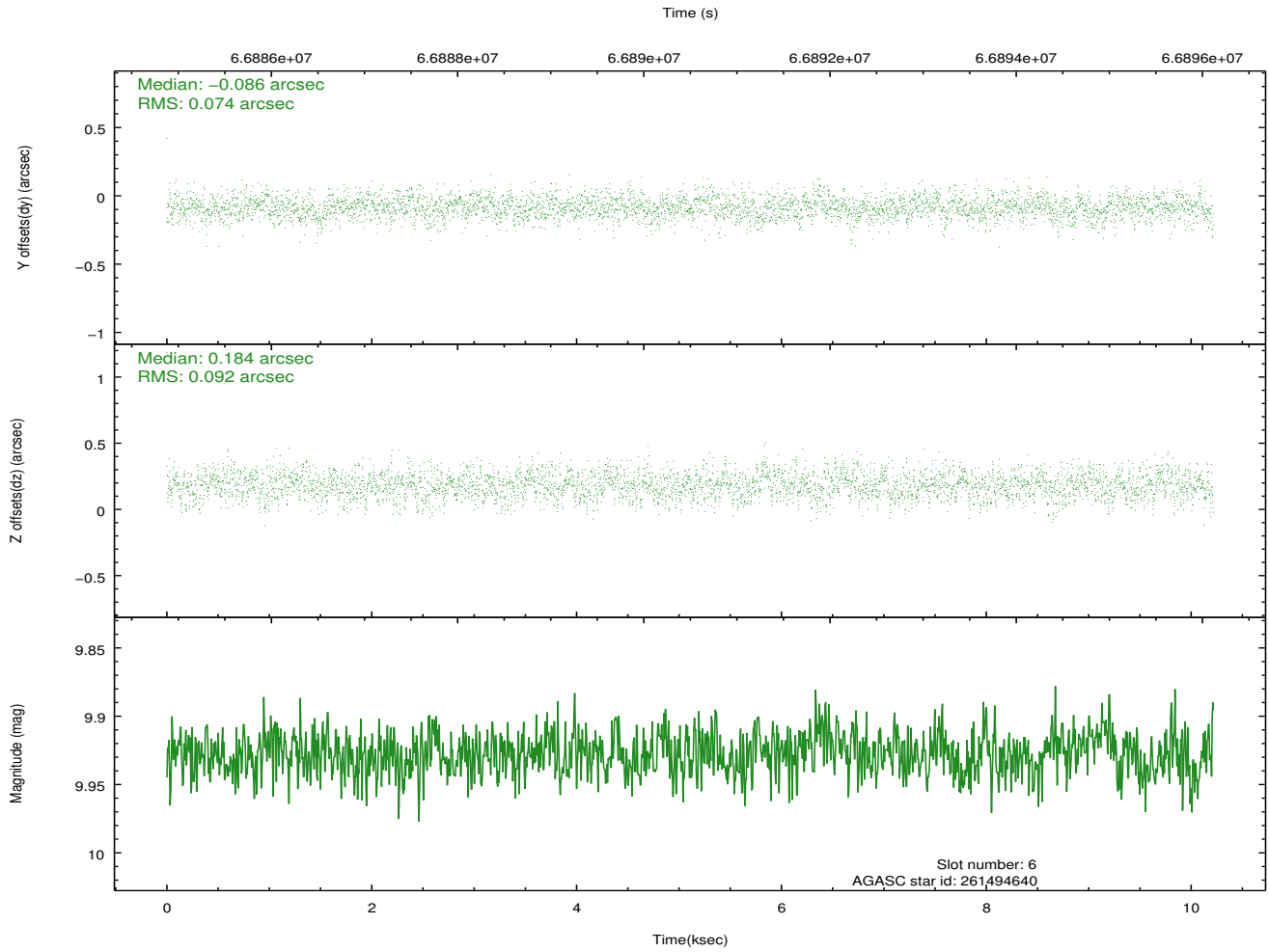
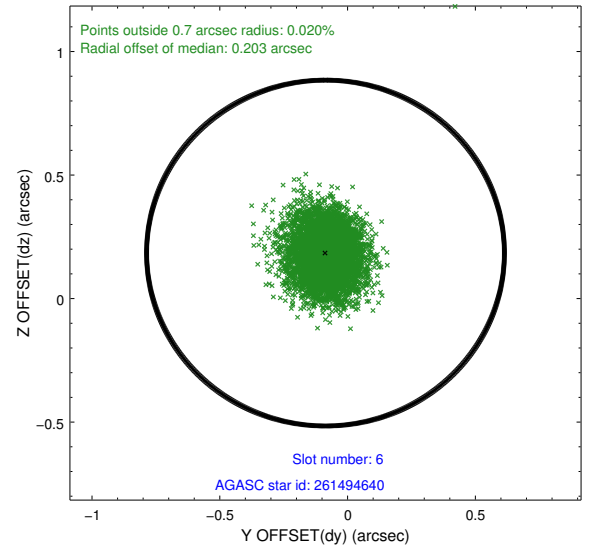
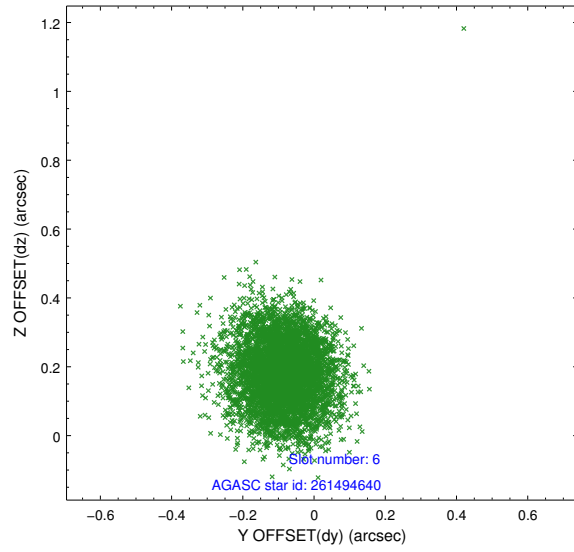
2.4.2 Slot 4



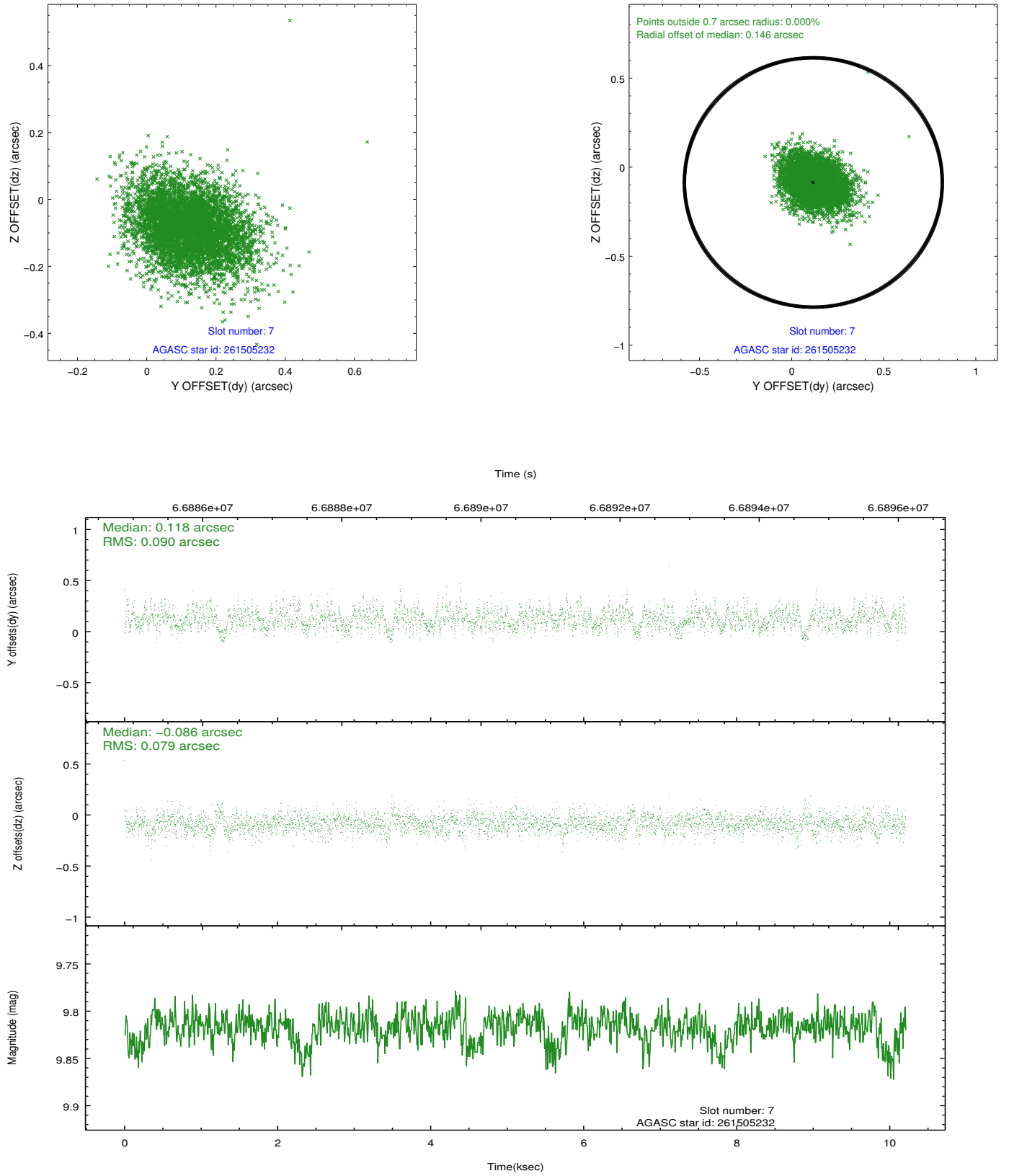
2.4.3 Slot 5



2.4.4 Slot 6

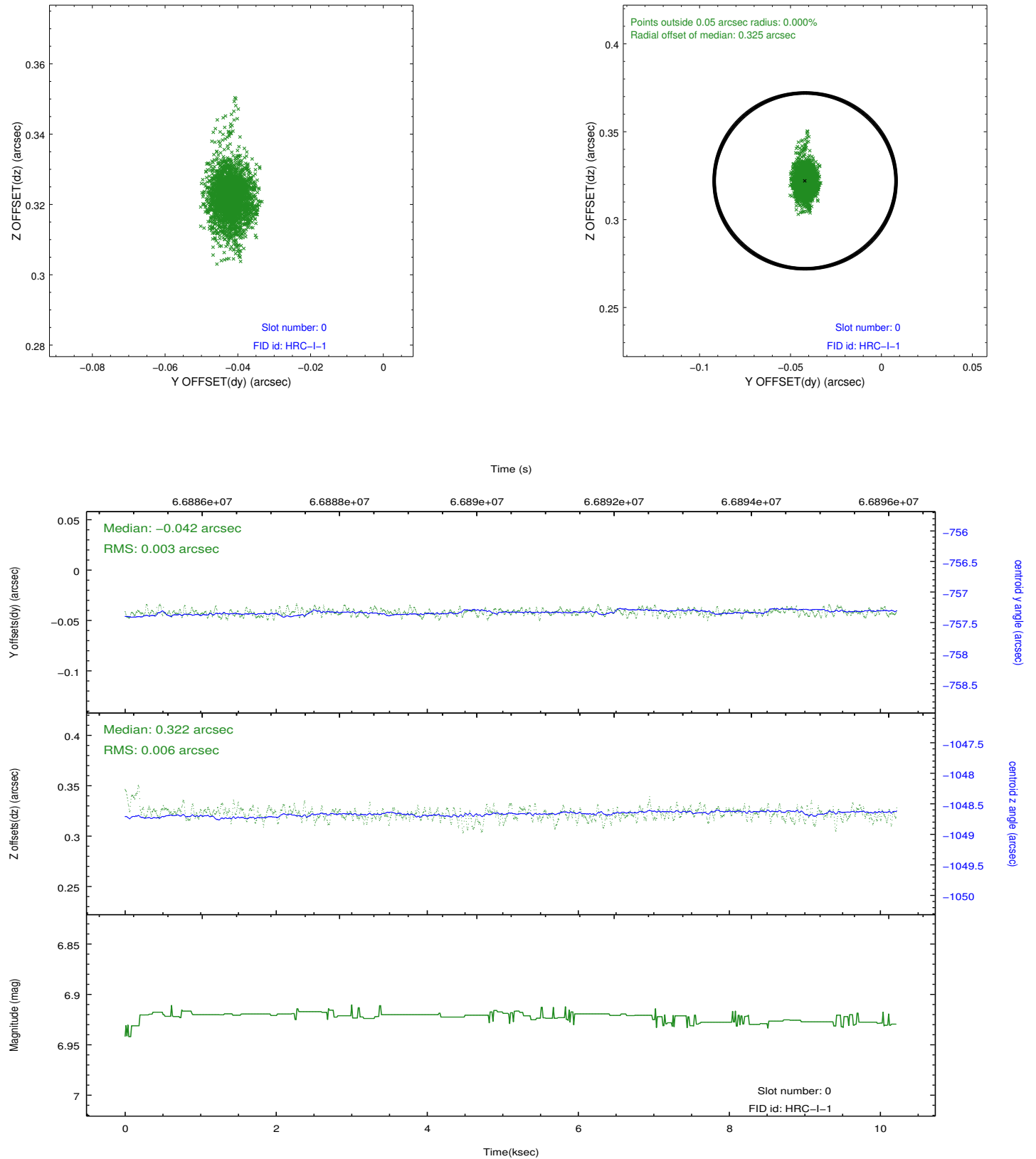


2.4.5 Slot 7

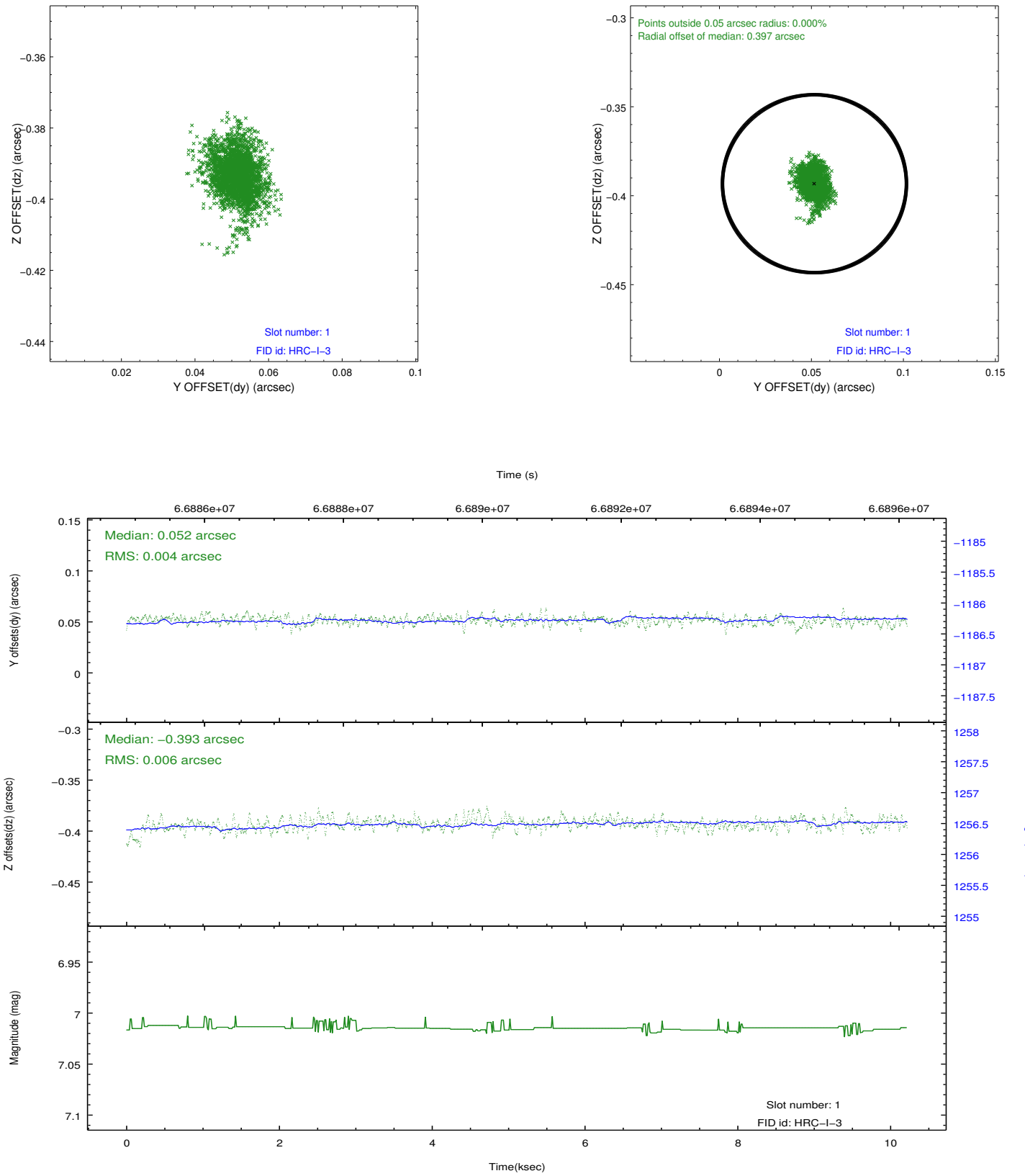


2.5 FID Slots

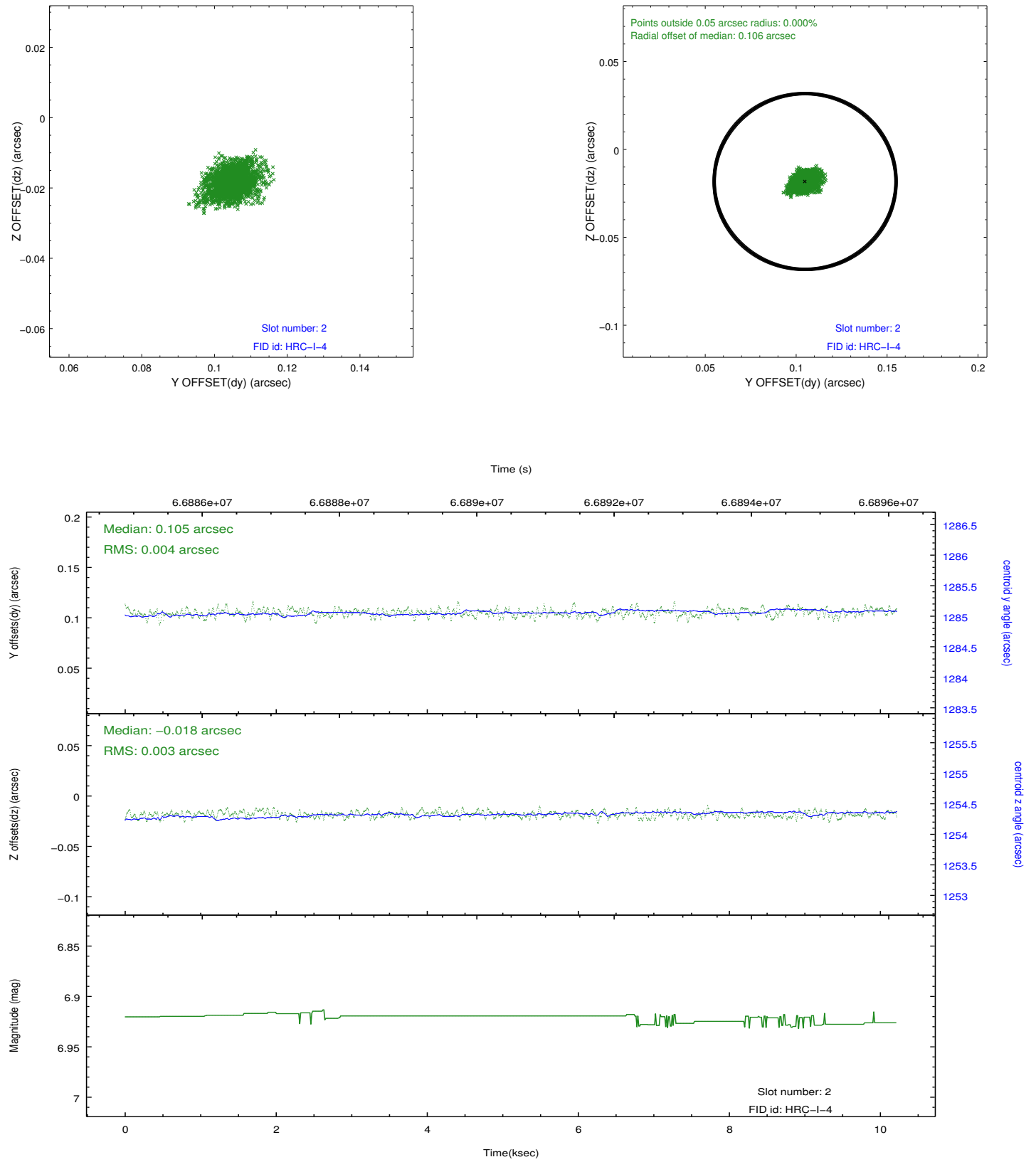
2.5.1 Slot 0



2.5.2 Slot 1



2.5.3 Slot 2



A Summary

A.1 Status

V&V Scientist	Jen Lauer
V&V Date (YYYY-MM-DD)	2012.08.23
V&V Edition	1
V&V Disposition and Status	OK
V&V Charge Time	10.212

A.2 Comments

Window constraint met.