

V&V Reference Report

L2 ASCDS Version : 8.4.5

Observation 56062 - L2 Version 2
Chandra X-Ray Center

L2 Processing Date : Jul 2 2012

Contents

1	Front	2
2	OBI	3
2.1	OBI	3
2.1.1	Images	3
2.1.2	Bias	3
2.1.3	Parameters	4
2.1.4	Events	4
2.2	Compared Parameters	5
2.3	Star Slots	6
2.4	FID Slots	6
A	Summary	7
A.1	Status	7
A.2	Comments	7

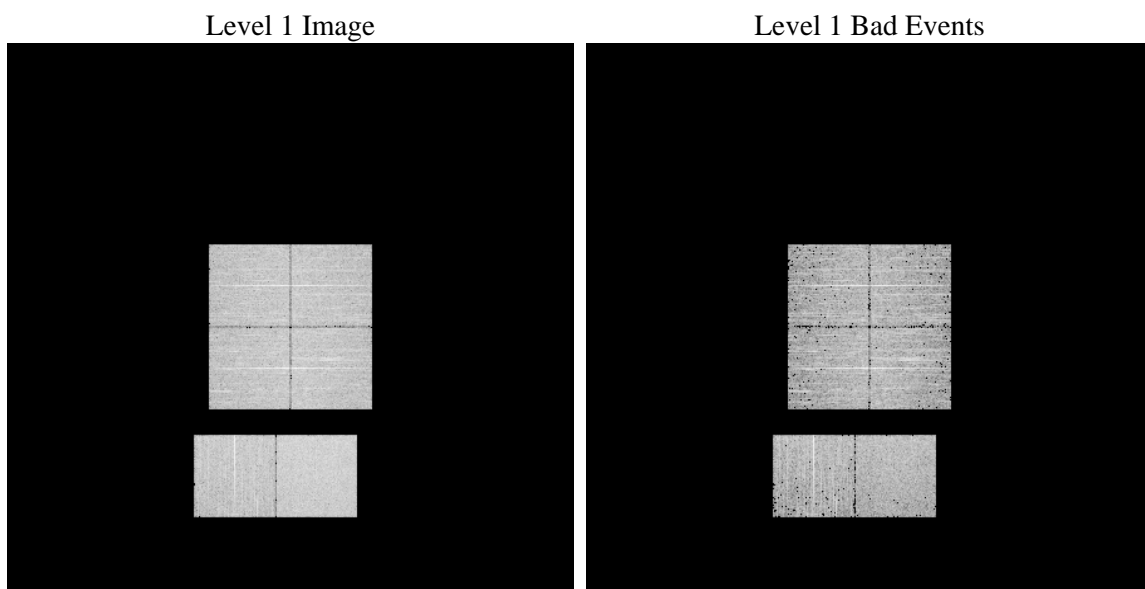
1 Front

seq_num	 	Sequence number
obs_id	56062	Observation id
title	ACIS-012367 diagnostics	Proposal title
observer	CHANDRA engineering request/realtime commanding	Principal investig
object	 	Source name
dtcycle	0	
cycle	P	events from which exps? Prim/Second/Both
ra_targ	0.0	Observer's specified target RA [deg]
dec_targ	0.0	Observer's specified target Dec [deg]
ra_nom	329.97652152376	Nominal RA [deg]
dec_nom	12.982490564332	Nominal Dec [deg]
roll_nom	184.68836384335	Nominal Roll [deg]
revision	2	Processing version of data
ontime	4008.1318181157	Sum of GTIs [s]
livetime	3957.3784396275	Livetime [s]
ontime0	4009.5999851227	Sum of GTIs [s]
ontime1	4009.5999851227	Sum of GTIs [s]
ontime2	4009.5999851227	Sum of GTIs [s]
ontime3	4008.0907781124	Sum of GTIs [s]
ontime6	4009.5999851227	Sum of GTIs [s]
ontime7	4008.1318181157	Sum of GTIs [s]
l2events	178494	Number of level 2 events

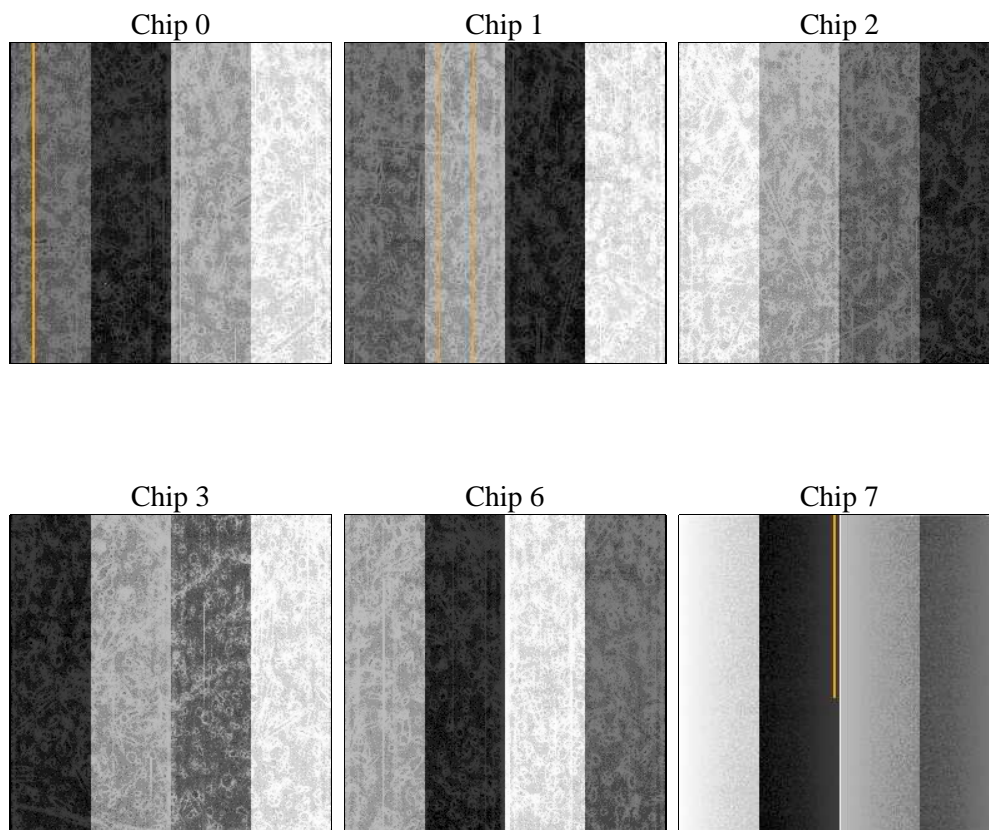
2 OBI

2.1 OBI

2.1.1 Images



2.1.2 Bias



2.1.3 Parameters

obi_num	0	Obi number	sched_exp_time	0.0	[s] Scheduled observation exposure time
ascdsver	8.4.5	Processing system revision	ontime	4008.1318181157	Sum of GTIs [s]
caldbver	4.5.0	 	ontime0	4009.5999851227	Sum of GTIs [s]
date	2012-07-02T06:44:21	Date and time of file creation	ontime1	4009.5999851227	Sum of GTIs [s]
revision	2	Processing version of data	ontime2	4009.5999851227	Sum of GTIs [s]
			ontime3	4008.0907781124	Sum of GTIs [s]
			ontime6	4009.5999851227	Sum of GTIs [s]
			ontime7	4008.1318181157	Sum of GTIs [s]
			l1events	380910	Number of level 1 events

2.1.4 Events

	ccd 0	ccd 1	ccd 2	ccd 3	ccd 6	ccd 7		ccd 0	ccd 1	ccd 2	ccd 3	ccd 6	ccd 7
level 1 events	59471	59176	59760	62490	62604	77409	grade 0 events	15355	14851	15261	15552	14888	7575
rejected events	30538	30461	31487	33552	33605	32263		25%	25%	25%	24%	23%	9%
rejected %	51%	51%	52%	53%	53%	41%	grade 1 events	100	91	113	106	84	67
								0%	0%	0%	0%	0%	0%
							grade 2 events	5240	5547	4961	4976	5401	9720
								8%	9%	8%	7%	8%	12%
							grade 3 events	1974	1841	1942	2051	1938	3963
								3%	3%	3%	3%	3%	5%
							grade 4 events	1892	1897	1914	2036	1872	4011
								3%	3%	3%	3%	2%	5%
							grade 5 events	1756	1850	1760	2052	1919	5045
								2%	3%	2%	3%	3%	6%
							grade 6 events	4503	4606	4216	4323	4932	19877
								7%	7%	7%	6%	7%	25%
							grade 7 events	28651	28493	29593	31394	31570	27151
								48%	48%	49%	50%	50%	35%

2.2 Compared Parameters

Parameter	Planned	Actual	Parameter	Planned	Actual
Instrument	ACIS	ACIS	Obspar format version number	7	7
Detector	ACIS-012367	ACIS-012367	Obspar file type	PREDICTED	ACTUAL
Grating	NONE	NONE	Obspar update status	NONE	UPDATED
Data mode	FAINT	FAINT	Number of optional ACIS chips dropped	0	0
Observation mode	SECONDARY	SECONDARY	On-chip summing requested	N	N
[deg] Pointing RA	0	329.9765215237647	Subarray requested	NONE	NONE
[deg] Pointing Dec	0	12.98249056433168	Alternating exposures requested	N	N
[deg] Pointing Roll	0.0	184.6883638433526	[s] Primary exposure time	3.2	3.2
[mm] SIM focus pos	-1.429586	-1.428180813131781			
[mm] SIM defocus	0.1037507710433287	0.1051558262725154			
[mm] SIM translation stage pos	250.455976	250.466033080201			
[mm] SIM translation stage offset	0	-0.01005468664627074			
[s] Observation start time (MET)	398935962.929146	398935961.90415			
Observation start date	2010-08-23T07:32:43	2010-08-23T07:32:41			
[s] Observation end time (MET)	398941871.029449	398941870.00445			
Observation end date	2010-08-23T09:11:11	2010-08-23T09:11:10			
Read mode	TIMED	TIMED			

2.3 Star Slots

2.4 FID Slots

A Summary

A.1 Status

V&V Scientist	Jen Lauer
V&V Date (YYYY-MM-DD)	2012.07.10
V&V Edition	1
V&V Disposition and Status	OK
V&V Charge Time	4.0081318181157

A.2 Comments