

V&V Reference Report

L2 ASCDS Version : 8.5.1

Observation 5592 - L2 Version 3
Chandra X-Ray Center

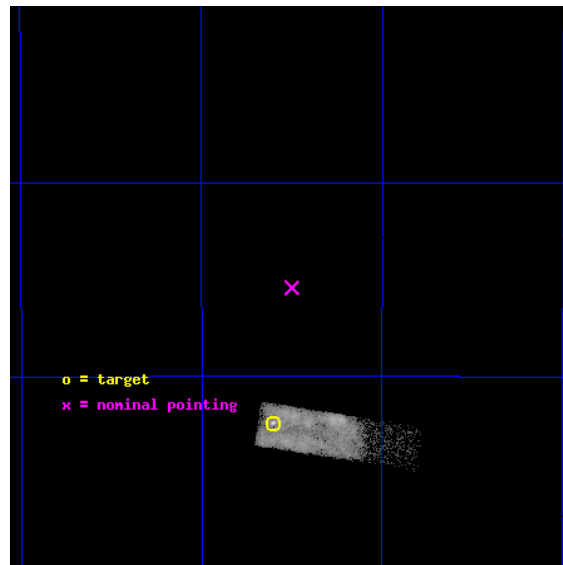
L2 Processing Date : Dec 16 2012

Contents

1	Front	2
2	OBI	3
2.1	OBI	3
2.1.1	Images	3
2.1.2	Bias	3
2.1.3	Parameters	4
2.1.4	Events	4
2.2	Compared Parameters	5
2.3	Aspect	6
2.4	Star Slots	9
2.4.1	Slot 3	9
2.4.2	Slot 4	10
2.4.3	Slot 5	11
2.4.4	Slot 6	12
2.4.5	Slot 7	13
2.5	FID Slots	14
2.5.1	Slot 0	14
2.5.2	Slot 1	15
2.5.3	Slot 2	16
A	Summary	17
A.1	Status	17
A.2	Comments	17

1 Front

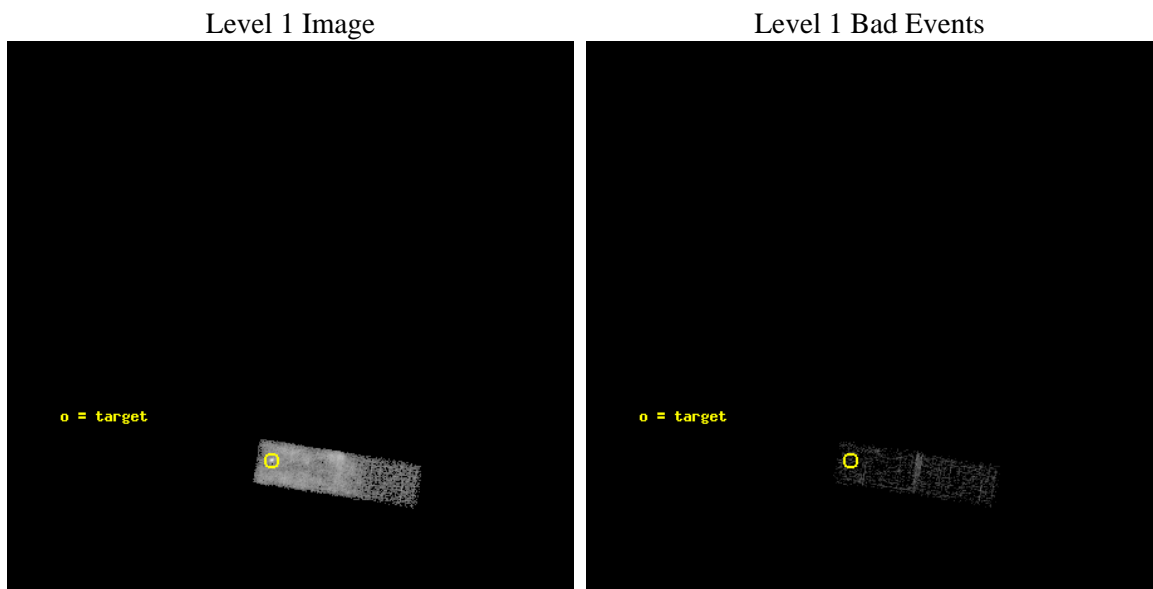
seq_num	500581	Sequence number
obs_id	5592	Observation id
title	Monitoring of the Central Object in RCW103	Proposal title
observer	Professor Gordon Garmire	Principal investigator
object	RCW103	Source name
dtcycle	0	
cycle	P	events from which exps? Prim/Second/Both
ra_targ	244.40125	Observer's specified target RA [deg]
dec_targ	-51.040278	Observer's specified target Dec [deg]
ra_nom	244.37513652834	Nominal RA [deg]
dec_nom	-50.923879794891	Nominal Dec [deg]
roll_nom	99.111514896486	Nominal Roll [deg]
revision	3	Processing version of data
ontime	5676.000084579	Sum of GTIs [s]
livetime	5399.0298531143	Livetime [s]
ontime3	5676.000084579	Sum of GTIs [s]
l2events	22168	Number of level 2 events



2 OBI

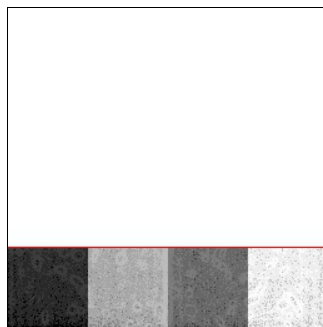
2.1 OBI

2.1.1 Images



2.1.2 Bias

Chip 3



2.1.3 Parameters

obi_num	1	Obi number	sched_exp_time	5497.297000	[s] Scheduled observation exposure time
ascdsver	8.5.1	Processing system revision	ontime	5676.000084579	Sum of GTIs [s]
caldsver	4.5.5	 	ontime3	5676.000084579	Sum of GTIs [s]
date	2012-12-16T11:52:51	Date and time of file creation	l1events	34540	Number of level 1 events
revision	3	Processing version of data			

2.1.4 Events

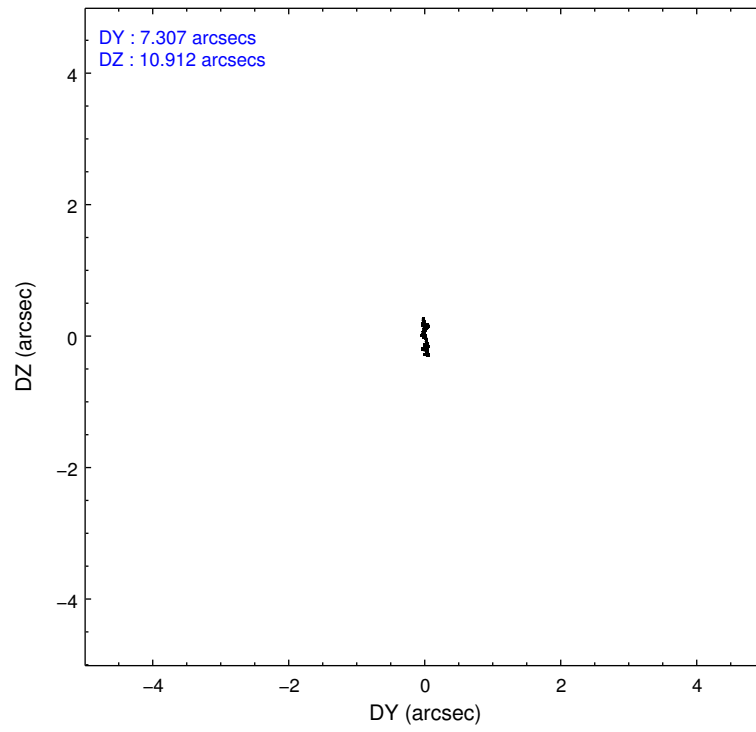
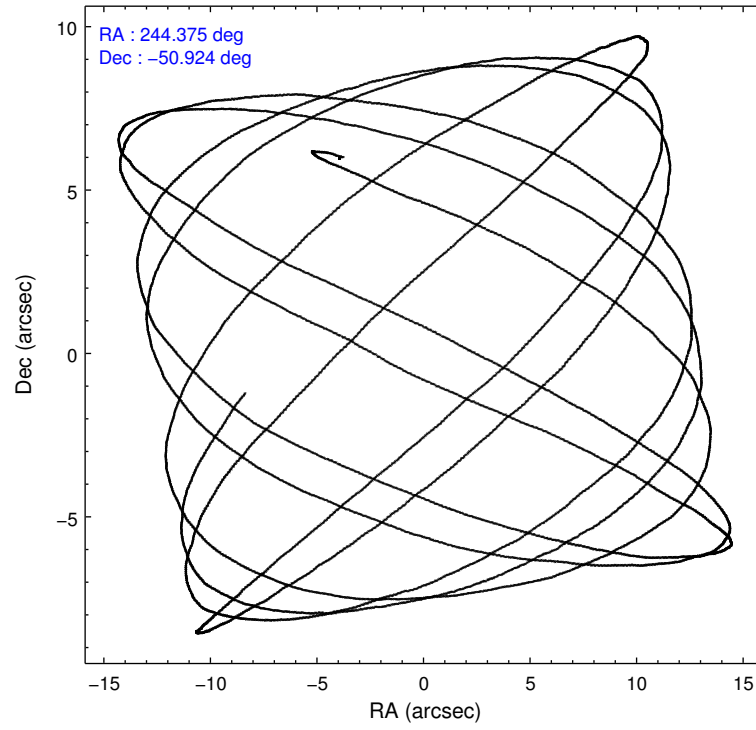
	ccd 3
level 1 events	34540
rejected events	11697
rejected %	33%

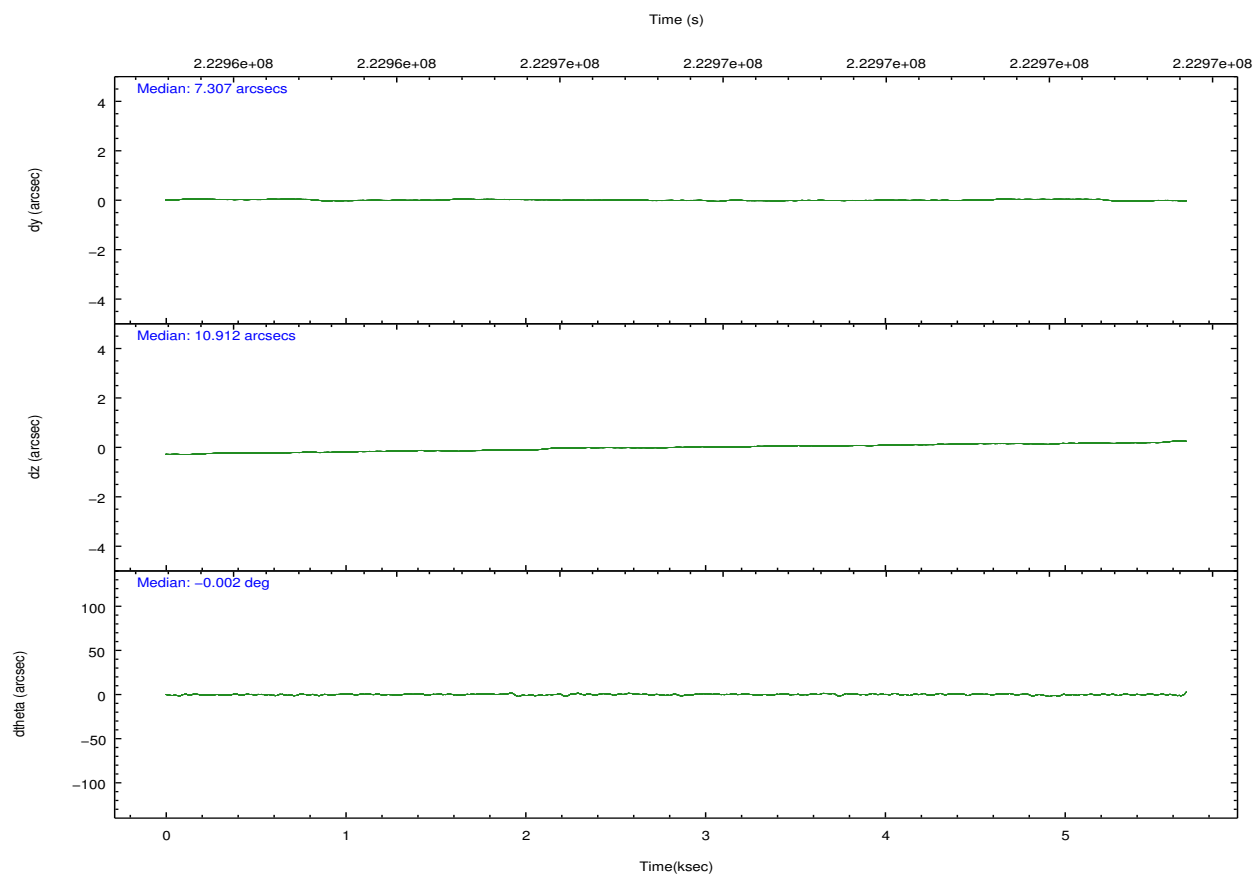
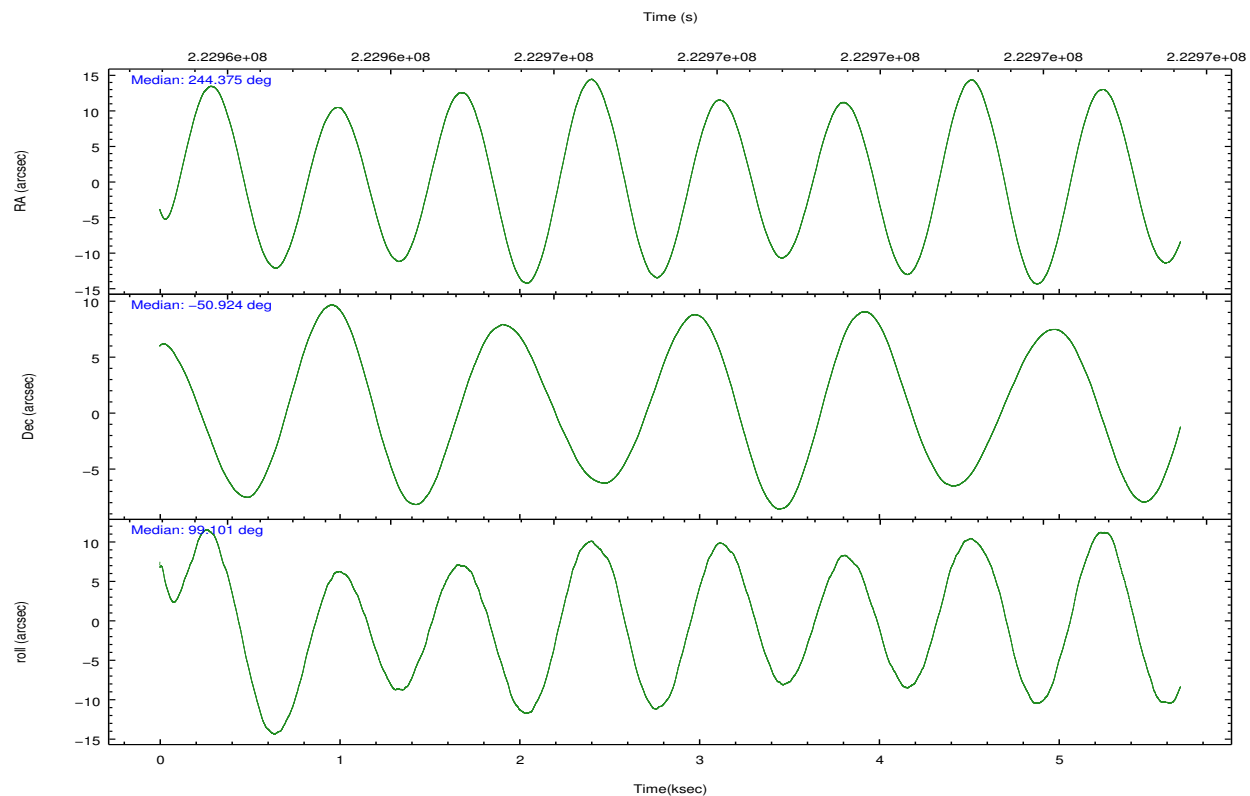
	ccd 3
grade 0 events	19739
	57%
grade 1 events	37
	0%
grade 2 events	2055
	5%
grade 3 events	748
	2%
grade 4 events	711
	2%
grade 5 events	203
	0%
grade 6 events	406
	1%
grade 7 events	10641
	30%

2.2 Compared Parameters

Parameter	Planned	Actual	Parameter	Planned	Actual
Instrument	ACIS	ACIS	Obspar format version number	7	7
Detector	ACIS-3	ACIS-3	Obspar file type	PREDICTED	ACTUAL
Grating	NONE	NONE	Obspar update status	NONE	UPDATED
Data mode	VFAINT	VFAINT	Number of optional ACIS chips dropped	0	0
Observation mode	POINTING	POINTING	On-chip summing requested	N	N
[deg] Pointing RA	244.402672	244.3751365283414	Subarray requested	CUSTOM	1/4
[deg] Pointing Dec	-50.944979	-50.9238797948911	Subarray start row	1	1
[deg] Pointing Roll	98.924203	99.11151489648591	Subarray row count	256	256
[mm] SIM focus pos	-0.782348	-0.7809083437167272	Alternating exposures requested	N	N
[mm] SIM defocus	0	0.001439871863259334	[s] Primary exposure time	0.000000	0.8
[mm] SIM translation stage pos	-233.592463	-233.5874344608287			
[mm] SIM translation stage offset	0	-0.005018542100998502			
[s] Observation start time (MET)	222964048.184000	222962313.64137			
Observation start date	2005-01-24T14:26:24	2005-01-24T13:58:33			
[s] Observation end time (MET)	222969546.184000	222969781.7917			
Observation end date	2005-01-24T15:58:02	2005-01-24T16:03:01			
Read mode	TIMED	TIMED			

2.3 Aspect



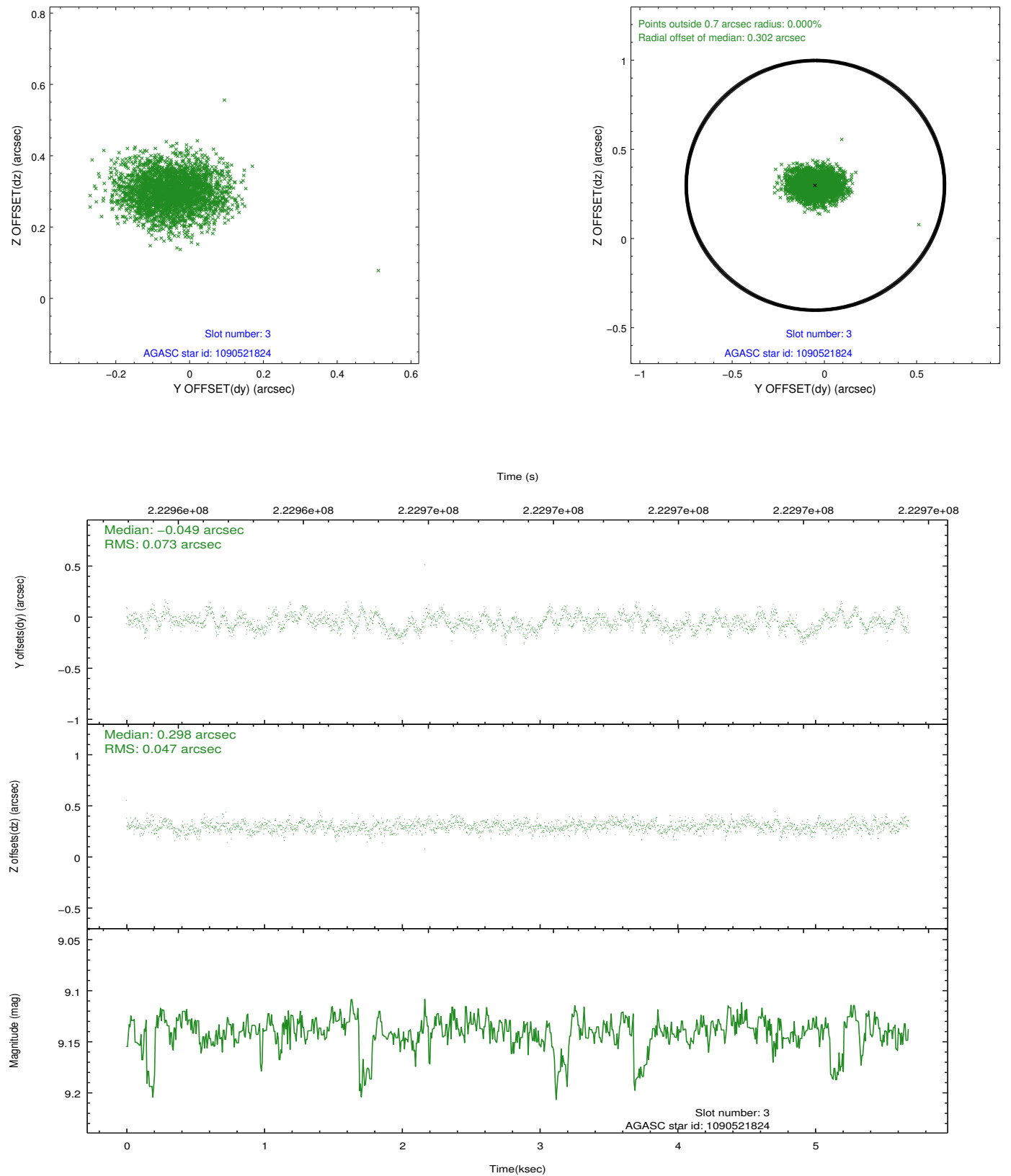


Slot Statistics

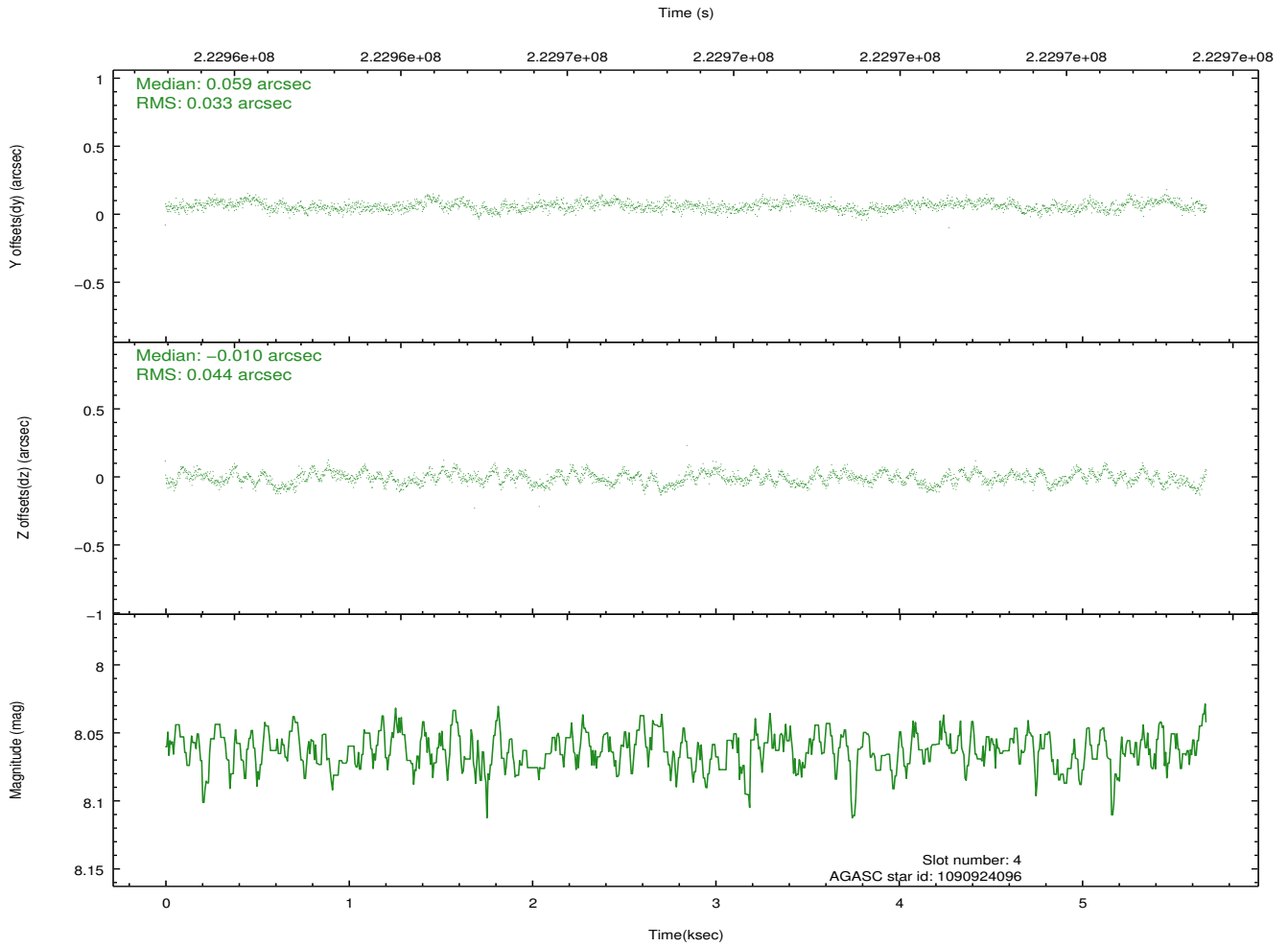
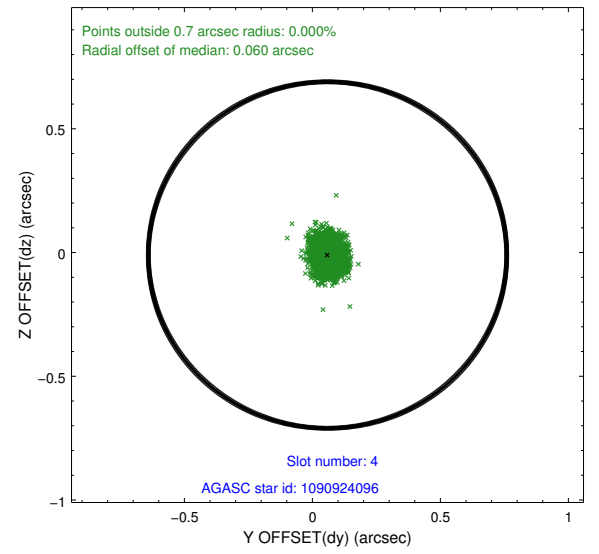
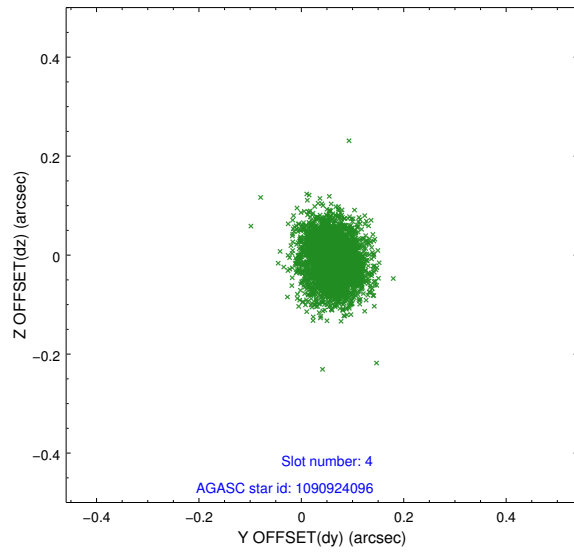
slot	status	id	mag	n_pts	med_dy	med_dz	dr1	dr2	ra	dec	mean_y	mean_z
0	FID	ACIS-I-1	7.24	1384	-0.014	-0.051	0.013	0.025	0.000000	0.000000	932.34	-834.44
1	FID	ACIS-I-4	7.18	1385	0.129	0.065	0.010	0.017	0.000000	0.000000	2153.13	1064.94
2	FID	ACIS-I-5	7.22	1386	-0.214	0.056	0.008	0.012	0.000000	0.000000	-1814.49	1064.01
3	GUIDE	1090521824	9.14	2765	-0.049	0.298	0.091	0.149	244.711253	-50.470098	1578.41	-963.04
4	GUIDE	1090924096	8.06	2771	0.059	-0.010	0.059	0.093	243.849549	-51.016855	-65.03	1277.86
5	GUIDE	1091059112	9.05	2768	-0.020	0.249	0.106	0.164	245.180420	-50.736664	457.58	-1864.69
6	GUIDE	1090921440	8.94	2770	0.021	-0.247	0.091	0.147	243.292741	-50.752608	1057.78	2392.07
7	GUIDE	1090924384	8.06	2770	0.002	-0.287	0.071	0.111	243.330505	-50.934017	399.29	2400.32

2.4 Star Slots

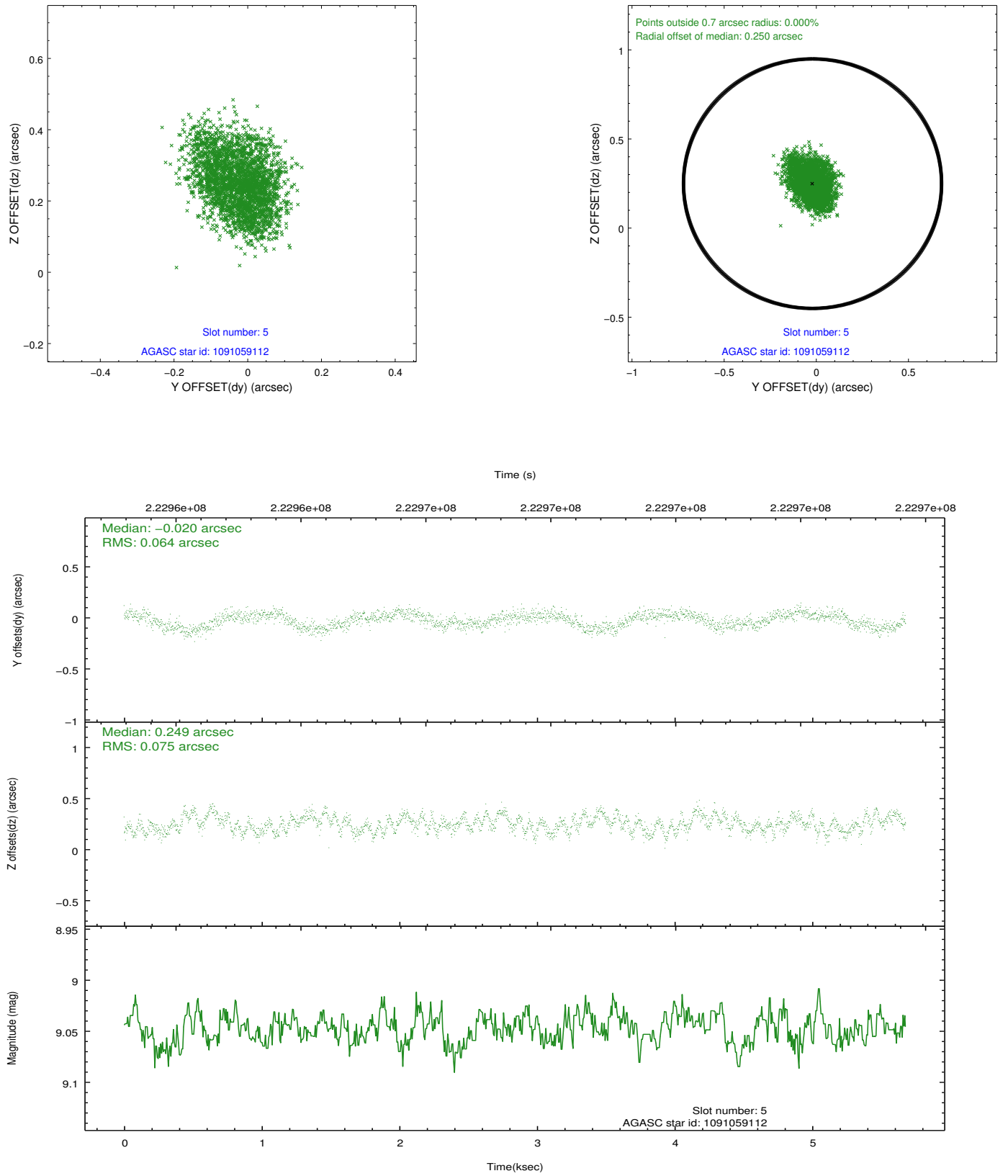
2.4.1 Slot 3



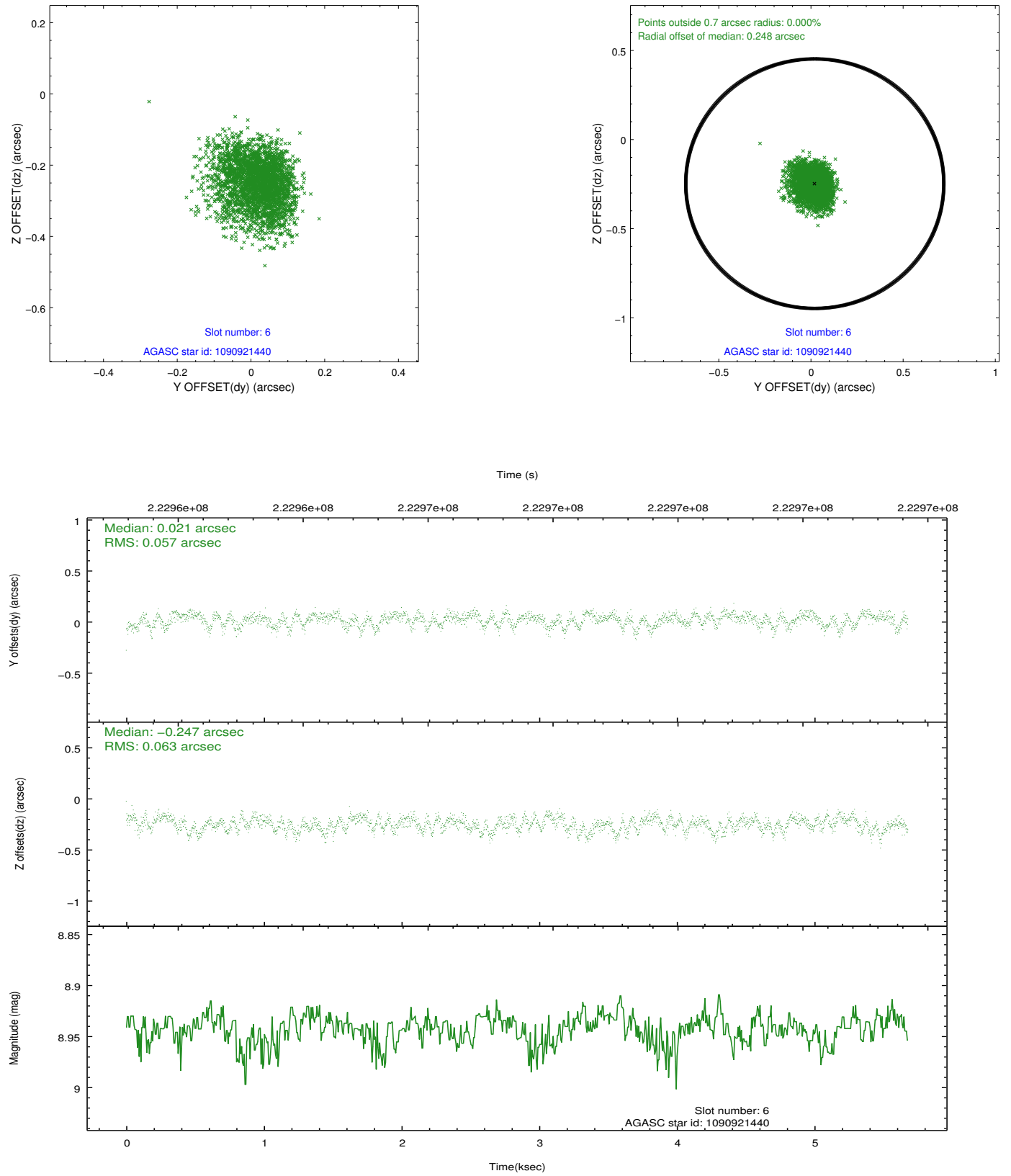
2.4.2 Slot 4



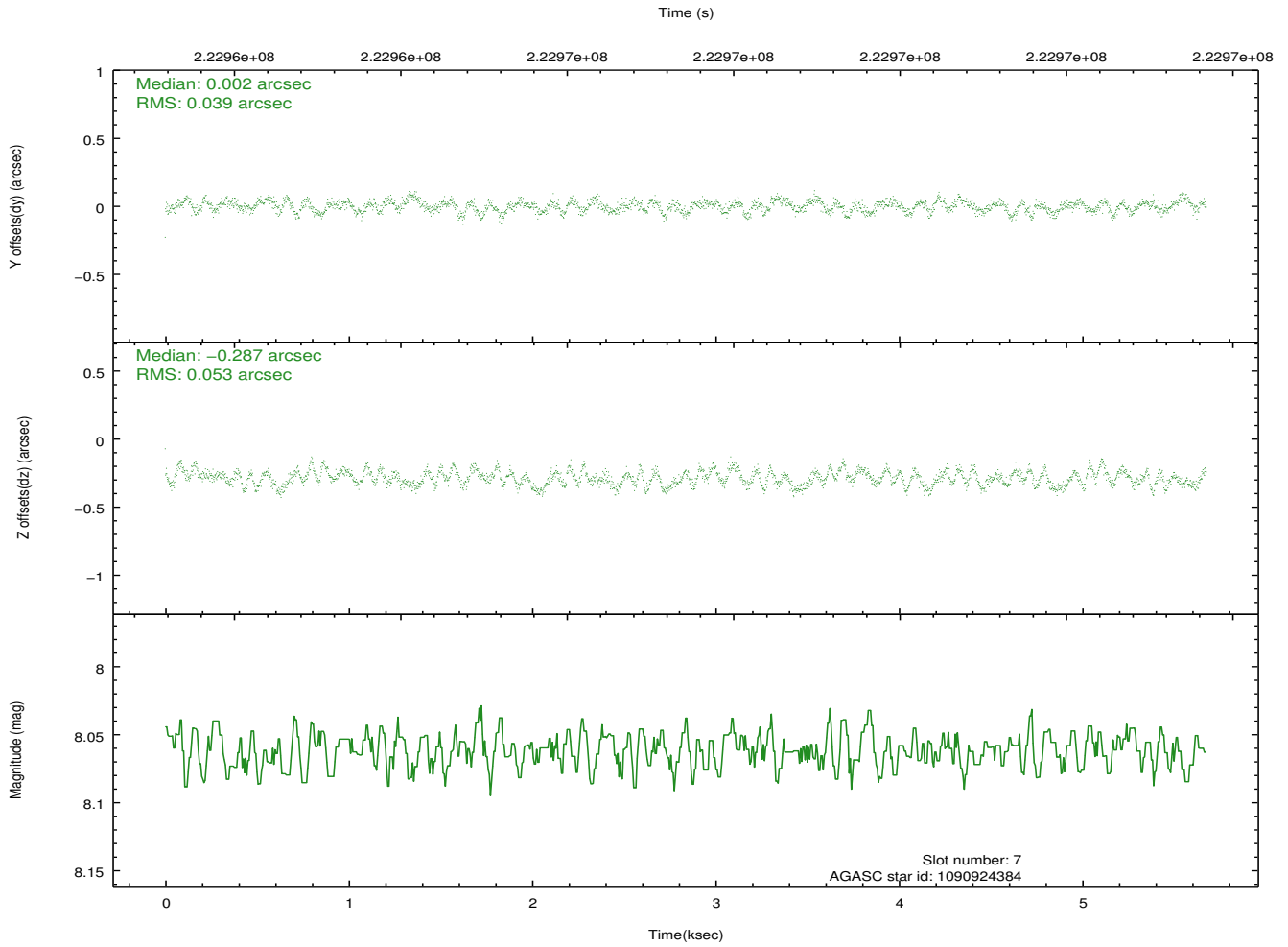
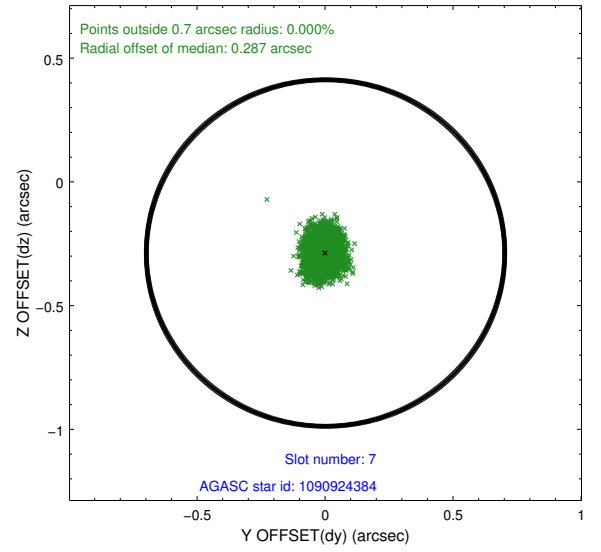
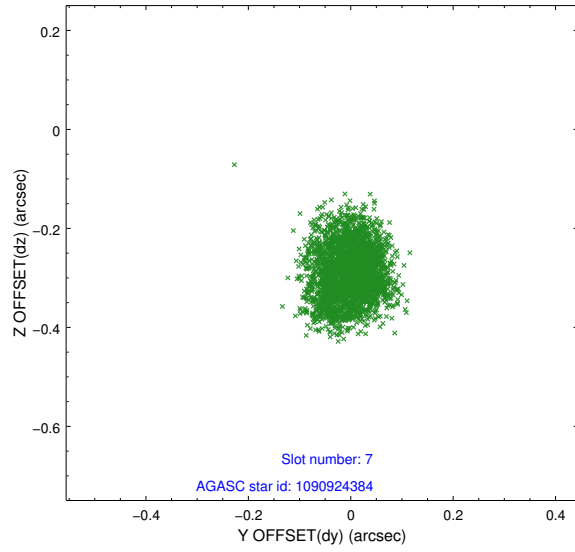
2.4.3 Slot 5



2.4.4 Slot 6

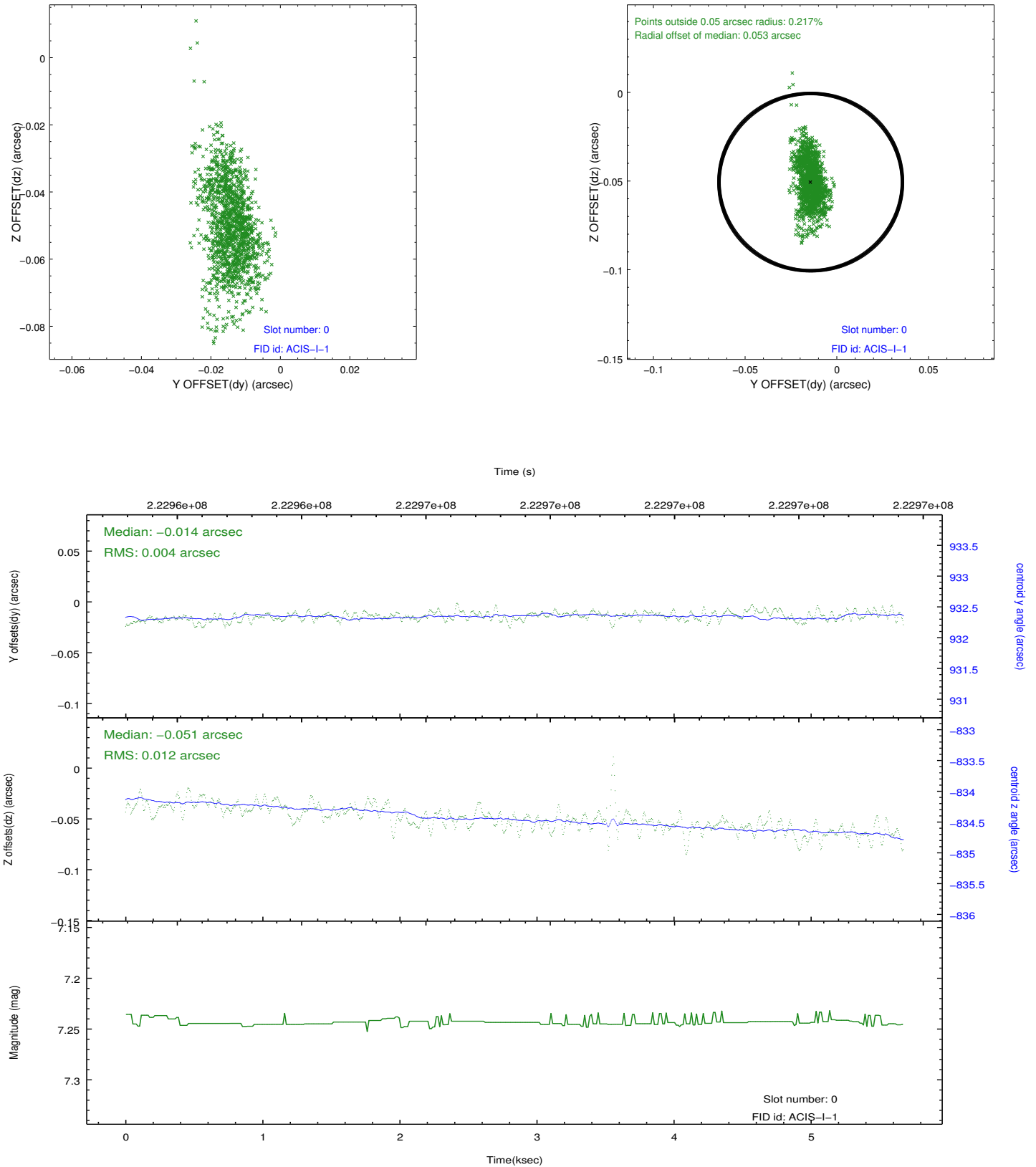


2.4.5 Slot 7

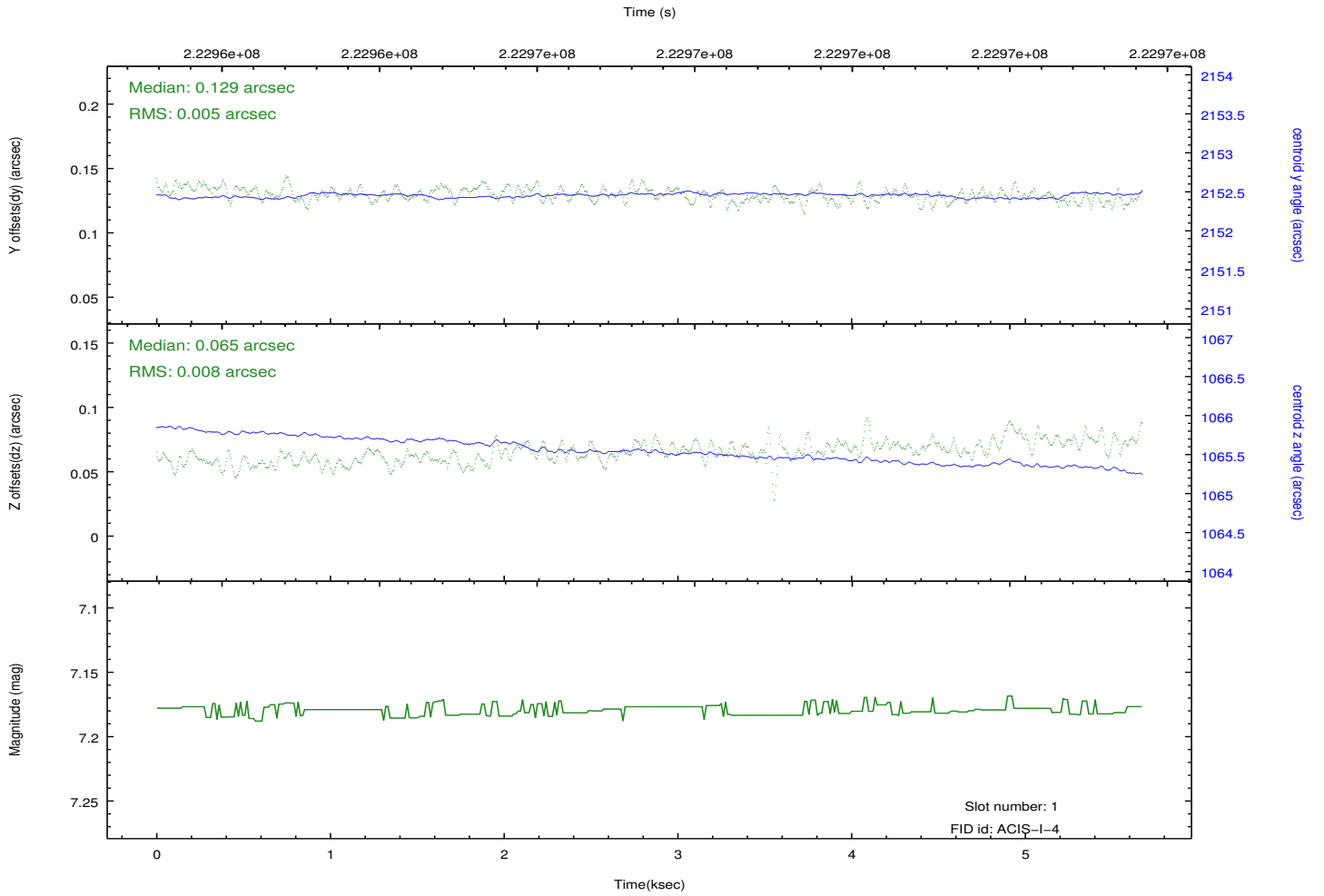
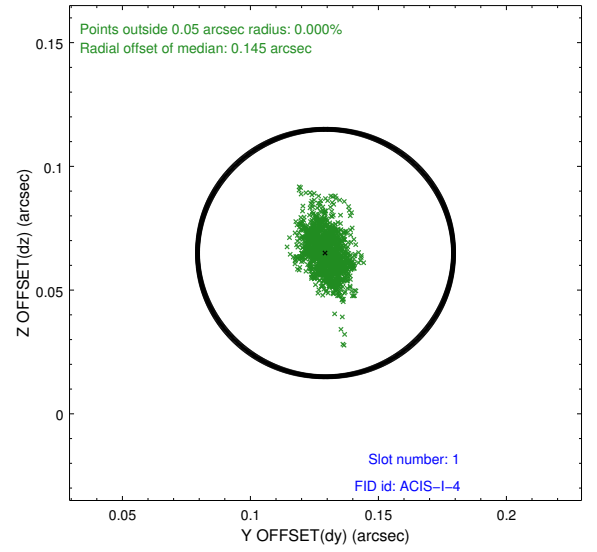
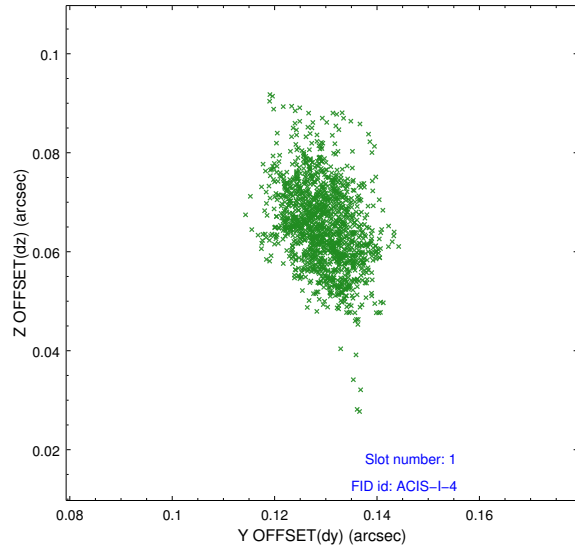


2.5 FID Slots

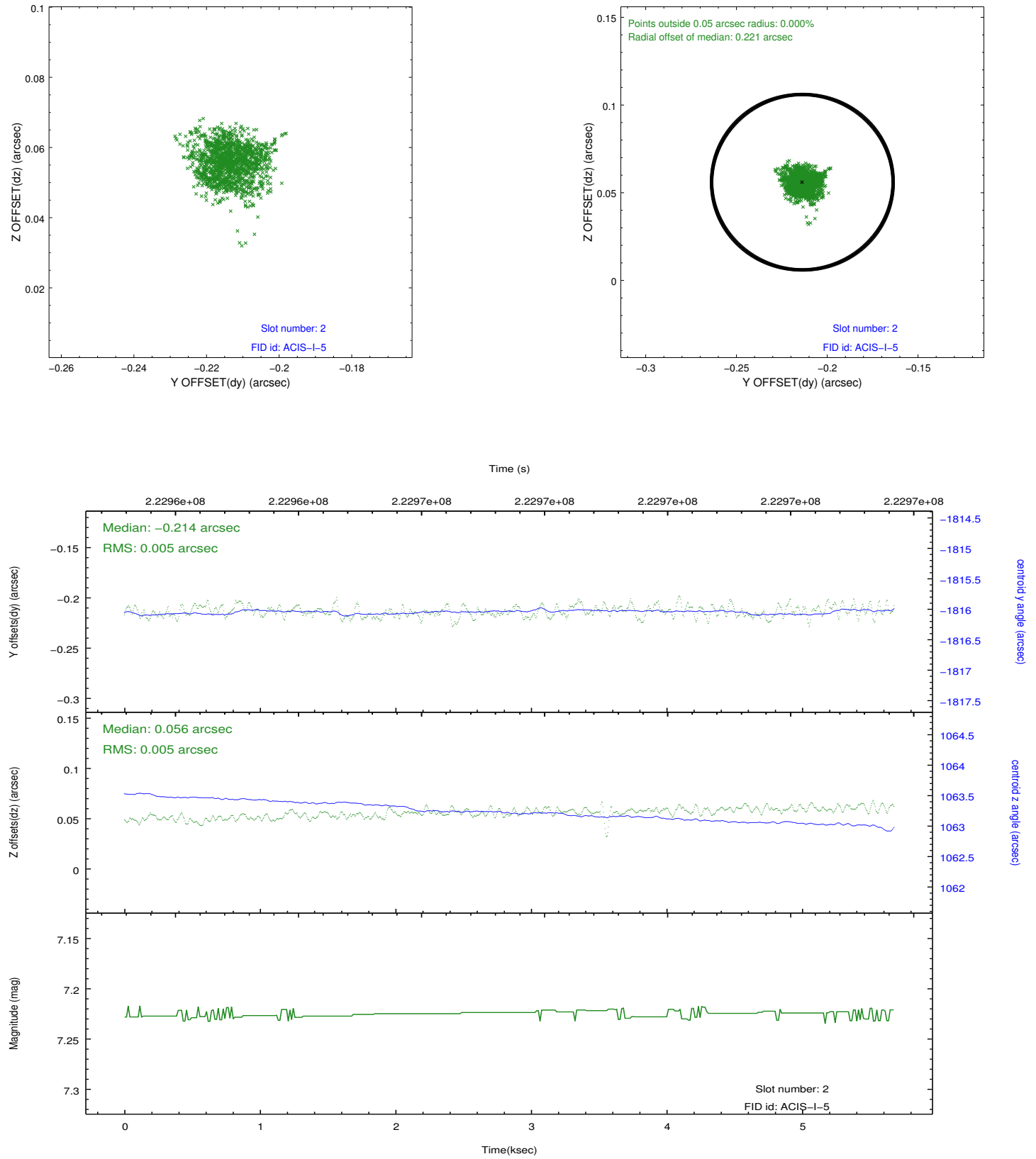
2.5.1 Slot 0



2.5.2 Slot 1



2.5.3 Slot 2



A Summary

A.1 Status

V&V Scientist	Jen Lauer
V&V Date (YYYY-MM-DD)	2013.01.08
V&V Edition	1
V&V Disposition and Status	OK
V&V Charge Time	5.676

A.2 Comments