

V&V Reference Report

L2 ASCDS Version : 8.4.3

Observation 55642 - L2 Version 2
Chandra X-Ray Center

L2 Processing Date : Feb 4 2012

Contents

1	Front	2
2	OBI	3
2.1	OBI	3
2.1.1	Images	3
2.1.2	Bias	3
2.1.3	Parameters	4
2.1.4	Events	4
2.2	Compared Parameters	5
2.3	Star Slots	6
2.4	FID Slots	6
A	Summary	7
A.1	Status	7
A.2	Comments	7

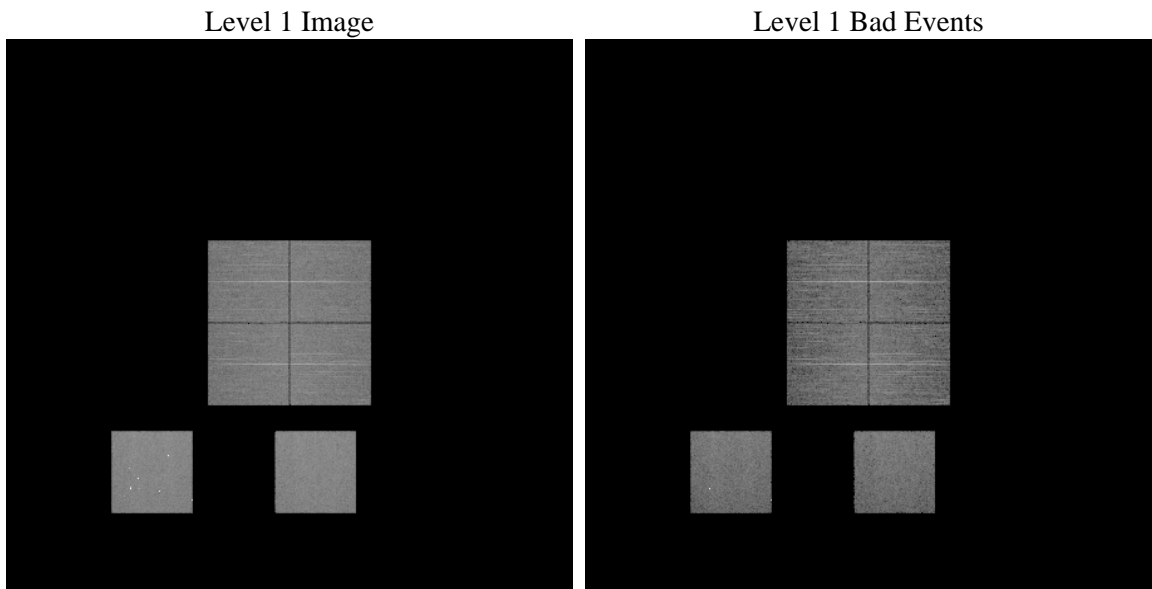
1 Front

seq_num	 	Sequence number
obs_id	55642	Observation id
title	ACIS-012357 diagnostics	Proposal title
observer	CHANDRA engineering request/realtime commanding	Principal investig
object	 	Source name
dtcycle	0	
cycle	P	events from which exps? Prim/Second/Both
ra_targ	0.0	Observer's specified target RA [deg]
dec_targ	0.0	Observer's specified target Dec [deg]
ra_nom	132.99419649535	Nominal RA [deg]
dec_nom	33.969365213546	Nominal Dec [deg]
roll_nom	218.79969095366	Nominal Roll [deg]
revision	2	Processing version of data
ontime	8283.3714875579	Sum of GTIs [s]
livetime	8178.4824501349	Livetime [s]
ontime0	8283.4125276804	Sum of GTIs [s]
ontime1	8283.4535675645	Sum of GTIs [s]
ontime2	8283.494607687	Sum of GTIs [s]
ontime3	8283.3304476738	Sum of GTIs [s]
ontime5	8284.7999691963	Sum of GTIs [s]
ontime7	8283.3714875579	Sum of GTIs [s]
l2events	370083	Number of level 2 events

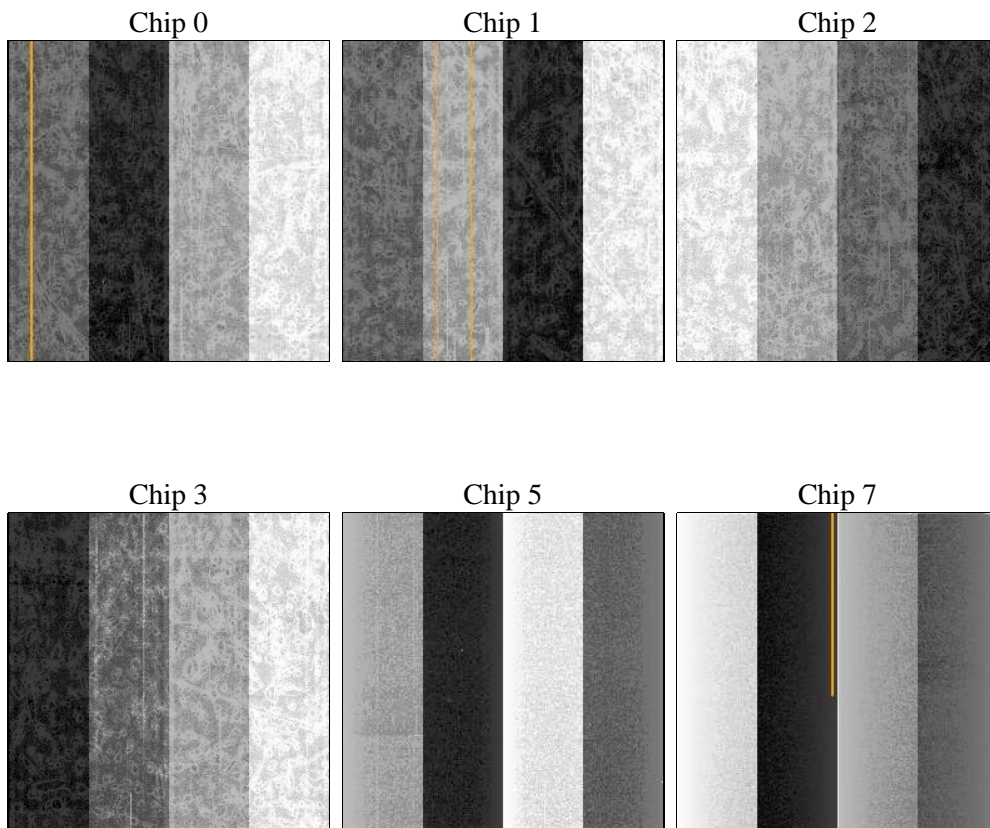
2 OBI

2.1 OBI

2.1.1 Images



2.1.2 Bias



2.1.3 Parameters

obi_num	0	Obi number	sched_exp_time	0.0	[s] Scheduled observation exposure time
ascdsver	8.4.3	Processing system revision	ontime	8283.3714875579	Sum of GTIs [s]
caldsver	4.4.7	 	ontime0	8283.4125276804	Sum of GTIs [s]
date	2012-02-04T07:48:02	Date and time of file creation	ontime1	8283.4535675645	Sum of GTIs [s]
revision	2	Processing version of data	ontime2	8283.494607687	Sum of GTIs [s]
			ontime3	8283.3304476738	Sum of GTIs [s]
			ontime5	8284.7999691963	Sum of GTIs [s]
			ontime7	8283.3714875579	Sum of GTIs [s]
			l1events	782209	Number of level 1 events

2.1.4 Events

	ccd 0	ccd 1	ccd 2	ccd 3	ccd 5	ccd 7		ccd 0	ccd 1	ccd 2	ccd 3	ccd 5	ccd 7
level 1 events	114658	113813	114287	119146	168129	152176	grade 0 events	28105	27493	28501	28808	17296	14138
rejected events	61165	60053	61296	65751	70292	65335		24%	24%	24%	24%	10%	9%
rejected %	53%	52%	53%	55%	41%	42%	grade 1 events	190	156	204	188	302	112
								0%	0%	0%	0%	0%	0%
							grade 2 events	9944	10565	9350	9212	32734	19051
								8%	9%	8%	7%	19%	12%
							grade 3 events	3615	3655	3678	3722	3532	7622
								3%	3%	3%	3%	2%	5%
							grade 4 events	3612	3552	3611	3827	3366	7465
								3%	3%	3%	3%	2%	4%
							grade 5 events	3922	3871	3582	4120	9246	10075
								3%	3%	3%	3%	5%	6%
							grade 6 events	8217	8495	7851	7826	40946	38565
								7%	7%	6%	6%	24%	25%
							grade 7 events	57053	56026	57510	61443	60707	55148
								49%	49%	50%	51%	36%	36%

2.2 Compared Parameters

Parameter	Planned	Actual	Parameter	Planned	Actual
Instrument	ACIS	ACIS	Obspar format version number	7	7
Detector	ACIS-012357	ACIS-012357	Obspar file type	PREDICTED	ACTUAL
Grating	NONE	NONE	Obspar update status	NONE	UPDATED
Data mode	FAINT	FAINT	Number of optional ACIS chips dropped	0	0
Observation mode	SECONDARY	SECONDARY	On-chip summing requested	N	N
[deg] Pointing RA	0	132.9941964953519	Subarray requested	NONE	NONE
[deg] Pointing Dec	0	33.96936521354564	Alternating exposures requested	N	N
[deg] Pointing Roll	0.0	218.7996909536567	[s] Primary exposure time	3.2	3.2
[mm] SIM focus pos	-1.429586	-1.428180813131781			
[mm] SIM defocus	0.1037507710433287	0.1051558262725154			
[mm] SIM translation stage pos	250.455976	250.466033080201			
[mm] SIM translation stage offset	0	-0.01005468664627074			
[s] Observation start time (MET)	414241300.617668	414241299.59266			
Observation start date	2011-02-16T11:01:41	2011-02-16T11:01:39			
[s] Observation end time (MET)	414254217.668337	414254216.64333			
Observation end date	2011-02-16T14:36:58	2011-02-16T14:36:56			
Read mode	TIMED	TIMED			

2.3 Star Slots

2.4 FID Slots

A Summary

A.1 Status

V&V Scientist	Jen Lauer
V&V Date (YYYY-MM-DD)	2012.02.07
V&V Edition	1
V&V Disposition and Status	OK
V&V Charge Time	8.2833714875579

A.2 Comments