

V&V Reference Report

L2 ASCDS Version : 8.4.3

Observation 5542 - L2 Version 5
Chandra X-Ray Center

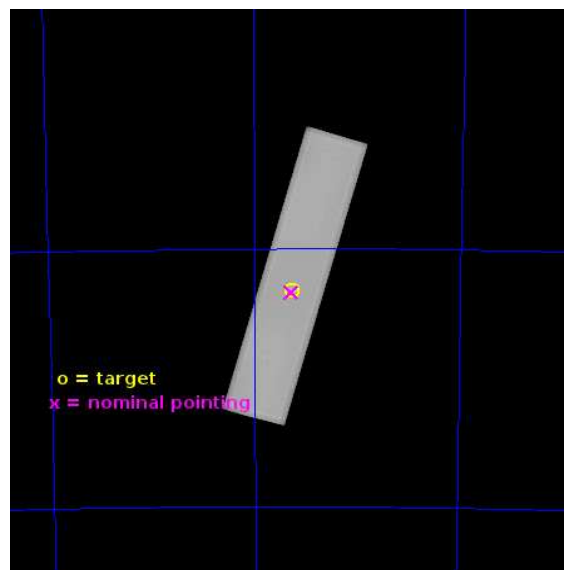
L2 Processing Date : Jul 1 2013

Contents

1	Front	2
2	OBI	3
2.1	OBI	3
2.1.1	Images	3
2.1.2	Parameters	4
2.1.3	Events	4
2.2	Compared Parameters	5
2.3	Aspect	6
2.4	Star Slots	9
2.4.1	Slot 3	9
2.4.2	Slot 4	10
2.4.3	Slot 6	11
2.4.4	Slot 7	12
2.5	FID Slots	13
2.5.1	Slot 0	13
2.5.2	Slot 1	14
2.5.3	Slot 2	15
A	Summary	16
A.1	Status	16
A.2	Comments	16

1 Front

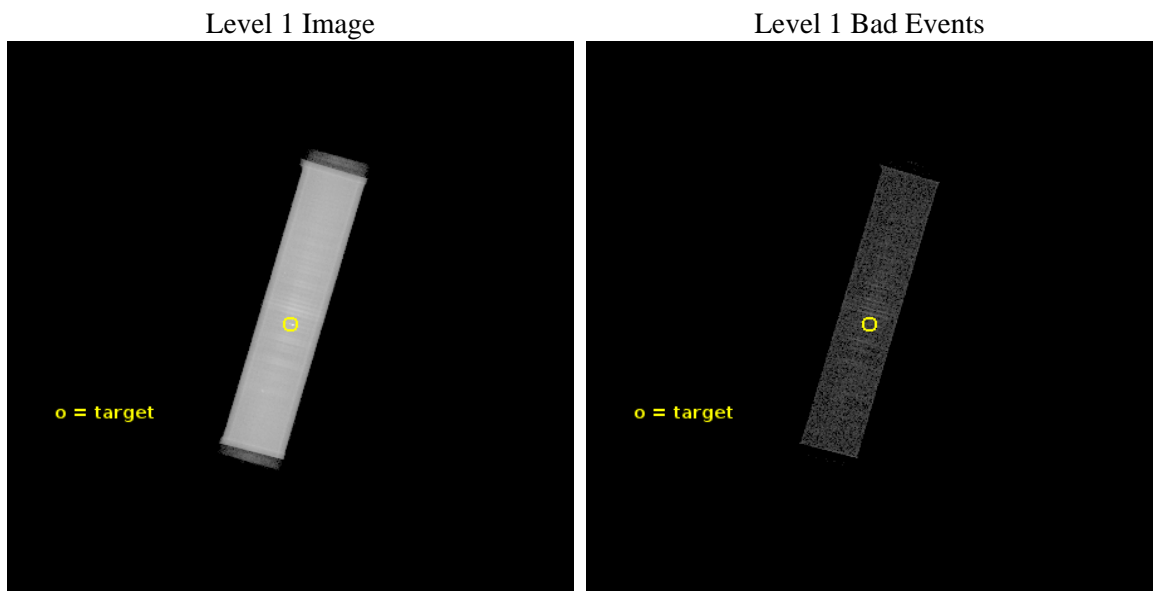
seq_num	500535	Sequence number
obs_id	5542	Observation id
title	Search for Sub-Millisecond Pulsars in 47 Tuc	Proposal title
observer	Prof. Robert Rutledge	Principal investigator
object	47 Tuc	Source name
ra_targ	6.021667	Observer's specified target RA [deg]
dec_targ	-72.080528	Observer's specified target Dec [deg]
ra_nom	6.025477868103	Nominal RA [deg]
dec_nom	-72.085076797975	Nominal Dec [deg]
roll_nom	285.88440579737	Nominal Roll [deg]
revision	5	Processing version of data
ontime	50162.7335715	[s]
livetime	49758.25001101	Ontime multiplied by DTCOR
l2events	2539588	Number of level 2 events



2 OBI

2.1 OBI

2.1.1 Images



2.1.2 Parameters

obi_num	0	Obi number	sched_exp_time	50000.000000	[s] Scheduled observation exposure time
ascdsver	10	Processing system revision	ontime	50162.7335715	[s]
caldsver	4.5.7	 	l1events	3568851	Number of level 1 events
date	2013-07-01T21:13:38	Date and time of file creation			
revision	5	Processing version of data			

2.1.3 Events

Level 1 Events

	segment 1	segment 2	segment 3
level 1 events	3771	3565072	8
rejected events	121	110251	0
rejected %	3%	3%	0%

2.2 Compared Parameters

Parameter	Planned	Actual
Instrument	HRC	HRC
Detector	HRC-S	HRC-S
Grating	NONE	NONE
Data mode	OBSERVING	OBSERVING
Observation mode	POINTING	POINTING
[deg] Pointing RA	5.955598	6.025477868103017
[deg] Pointing Dec	-72.066175	-72.08507679797535
[deg] Pointing Roll	285.750585	285.8844057973722
[mm] SIM focus pos	-1.533336	-1.526339935833849
[mm] SIM defocus	7.710433287538843e-07	0.006996703570447904
[mm] SIM translation stage pos	250.455976	250.466033080201
[mm] SIM translation stage offset	0	-0.01005468664627074
[s] Observation start time (MET)	251364179.184000	251363050.30263
Observation start date	2005-12-19T07:21:55	2005-12-19T07:04:10
[s] Observation end time (MET)	251414179.184000	251415068.54253
Observation end date	2005-12-19T21:15:15	2005-12-19T21:31:08

Parameter	Planned	Actual
Obspar format version number	7	7
Obspar file type	PREDICTED	ACTUAL
Obspar update status	NONE	UPDATED

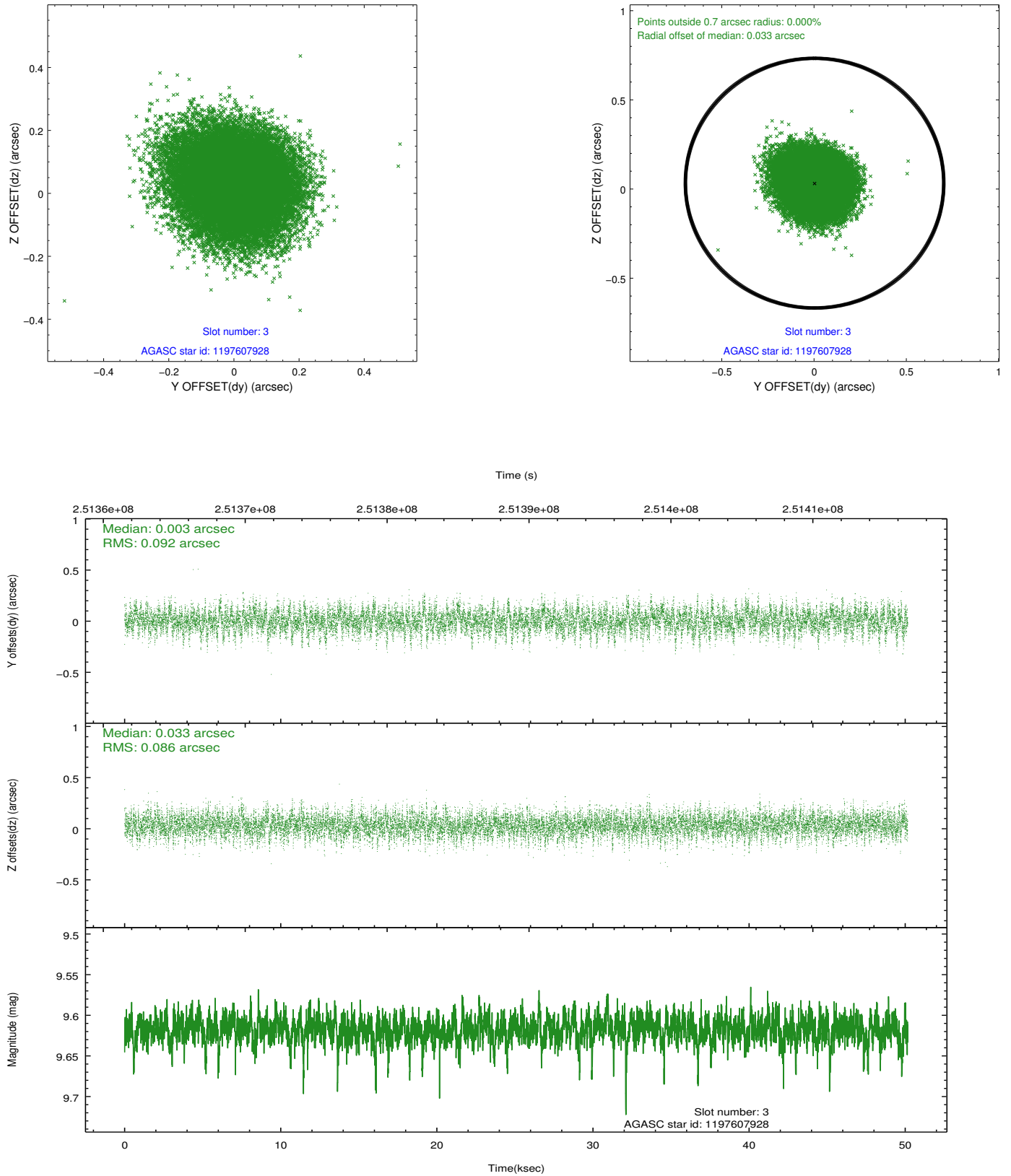
2.3 Aspect

Slot Statistics

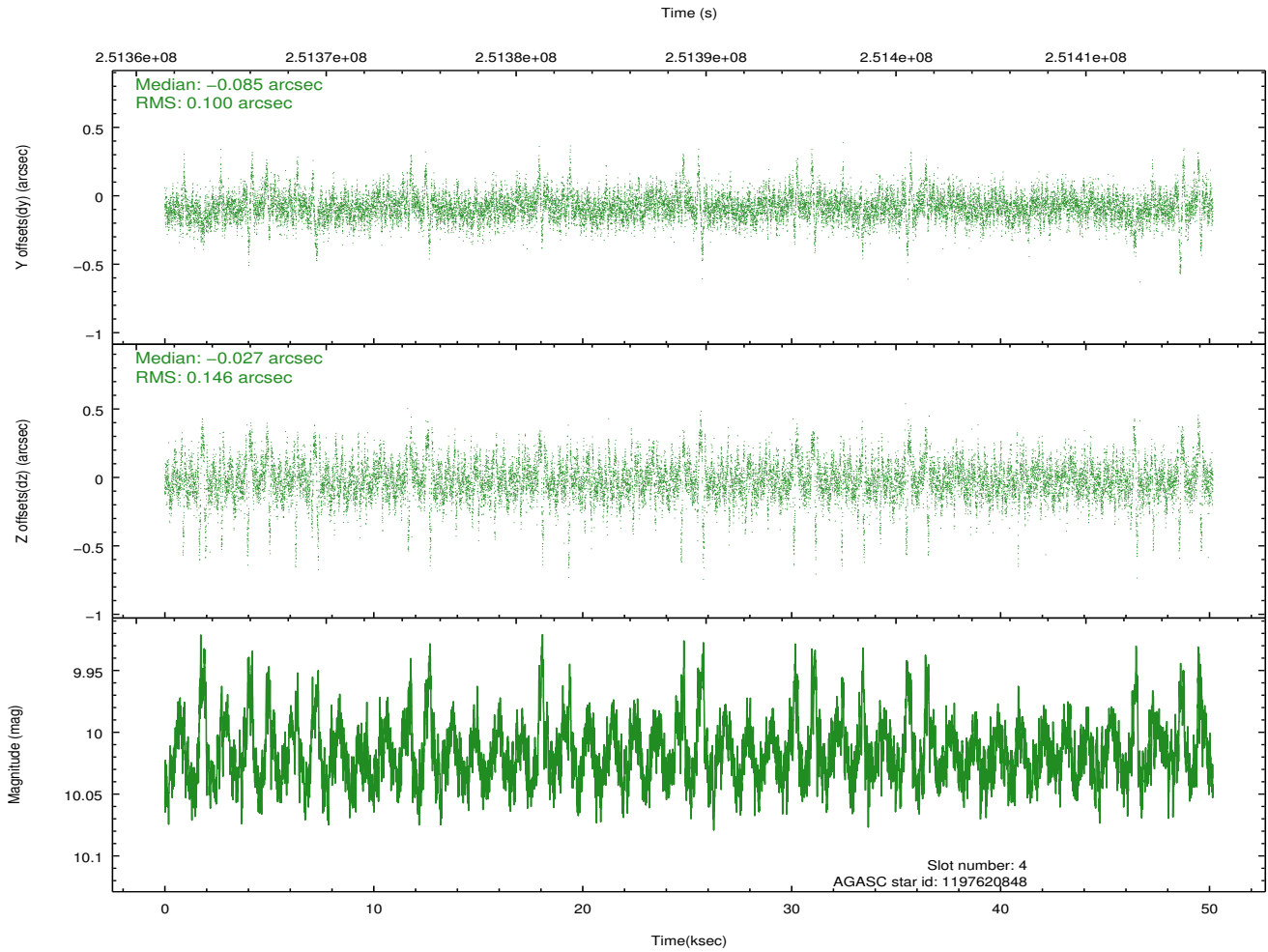
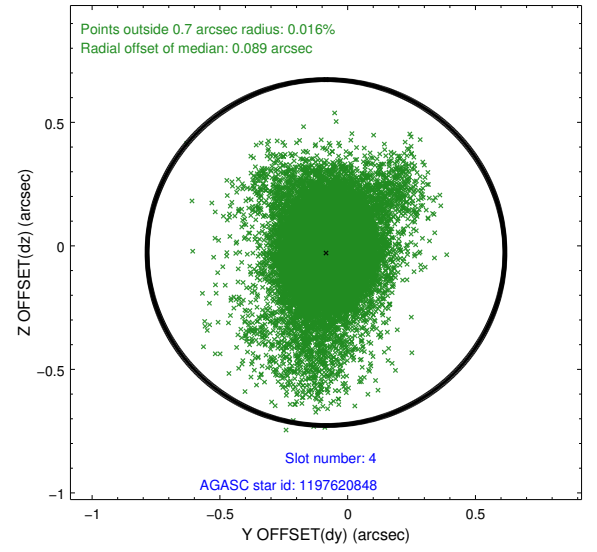
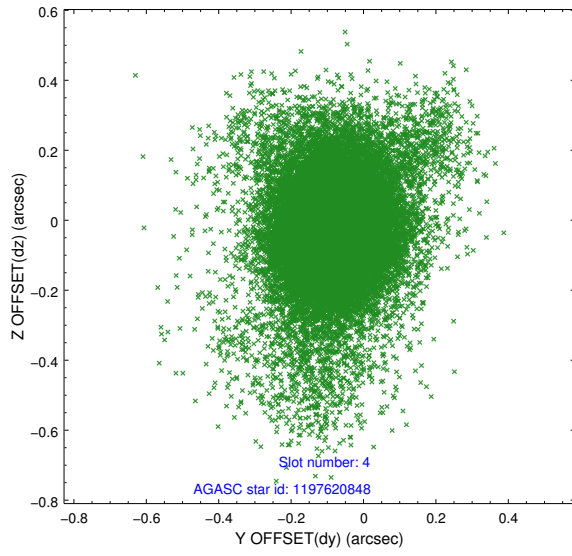
slot	status	id	mag	n_pts	med_dy	med_dz	dr1	dr2	ra	dec	mean_y	mean_z
0	FID	HRC-S-1	7.04	12235	0.153	-0.188	0.018	0.027	0.000000	0.000000	-1162.79	-459.24
1	FID	HRC-S-2	7.03	12234	0.139	-0.114	0.006	0.011	0.000000	0.000000	1236.76	-451.87
2	FID	HRC-S-3	7.04	12234	0.097	0.000	0.022	0.031	0.000000	0.000000	-1165.45	570.43
3	GUIDE	1197607928	9.62	24444	0.003	0.033	0.133	0.218	7.837743	-72.165759	939.61	1891.12
4	GUIDE	1197620848	10.02	24427	-0.085	-0.027	0.167	0.352	3.913465	-71.739620	-1718.85	-1908.35
5	OMITTED		0.00	0	0.000	0.000	0.000	0.000	0.000000	0.000000	0.00	0.00
6	GUIDE	1198000776	9.88	24442	0.176	0.001	0.174	0.292	4.972441	-72.805451	2286.30	-1731.67
7	GUIDE	1197621088	9.94	24357	-0.091	-0.006	0.159	0.257	3.823480	-72.180366	-201.01	-2382.07

2.4 Star Slots

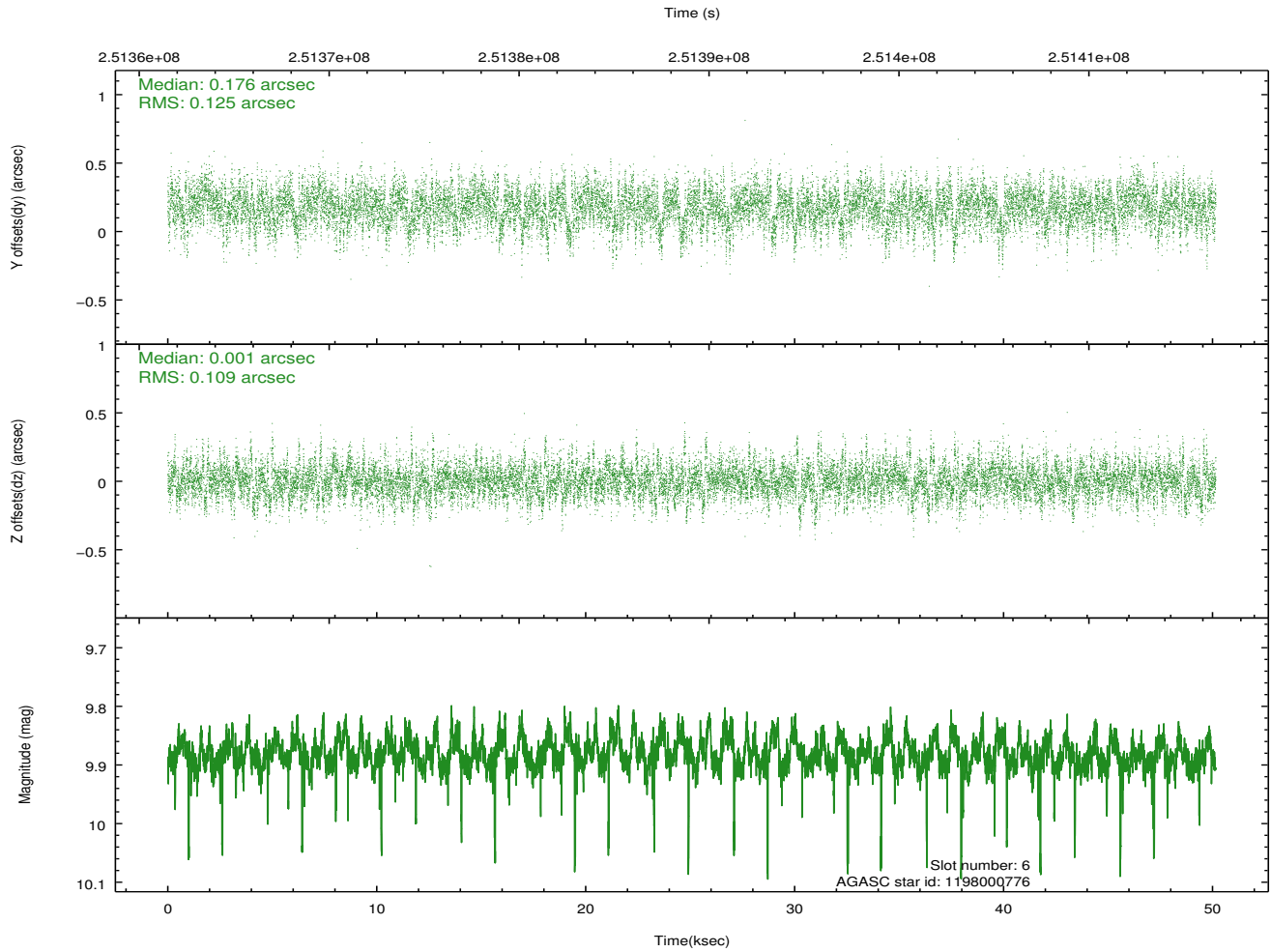
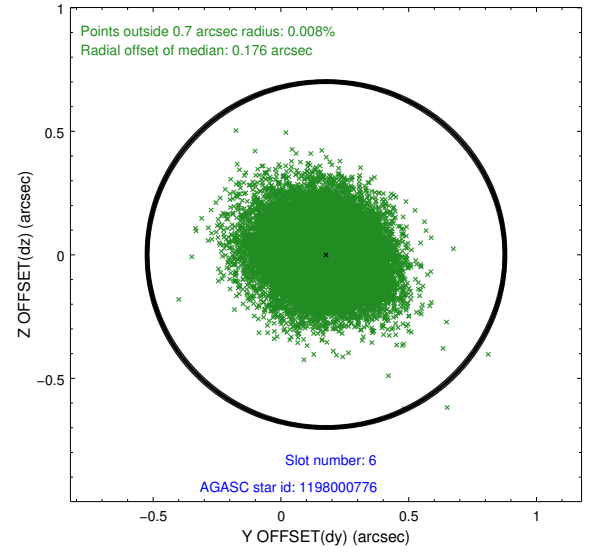
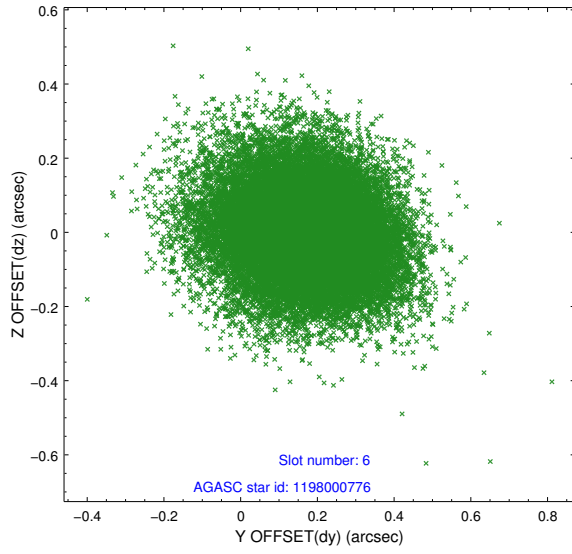
2.4.1 Slot 3



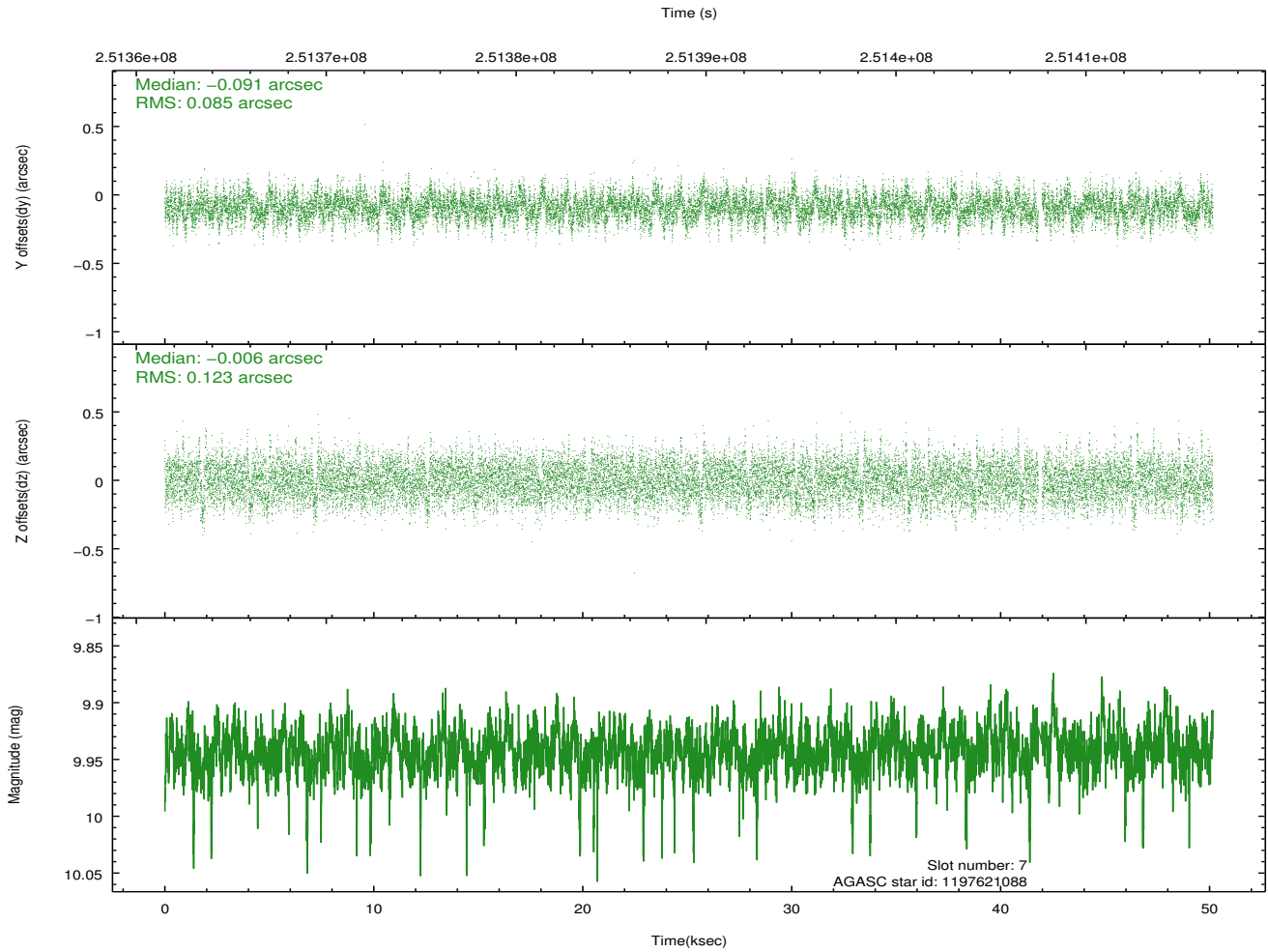
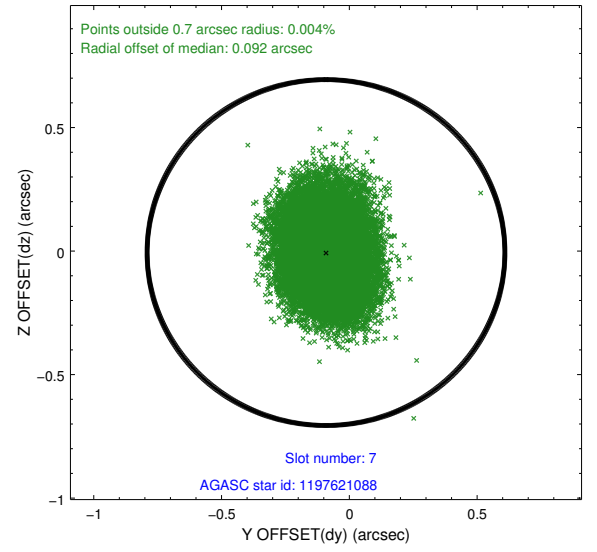
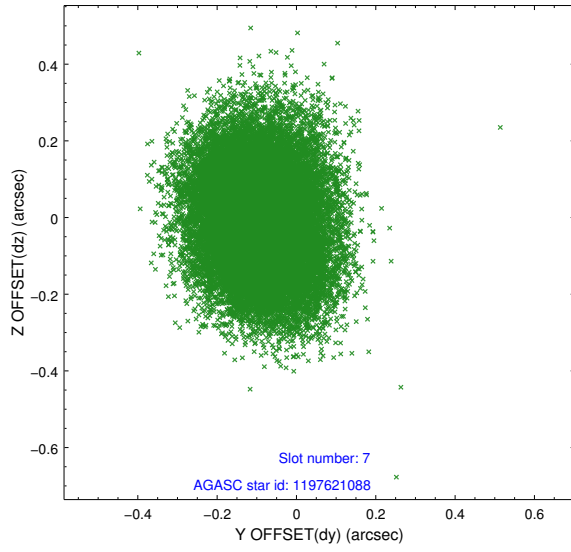
2.4.2 Slot 4



2.4.3 Slot 6

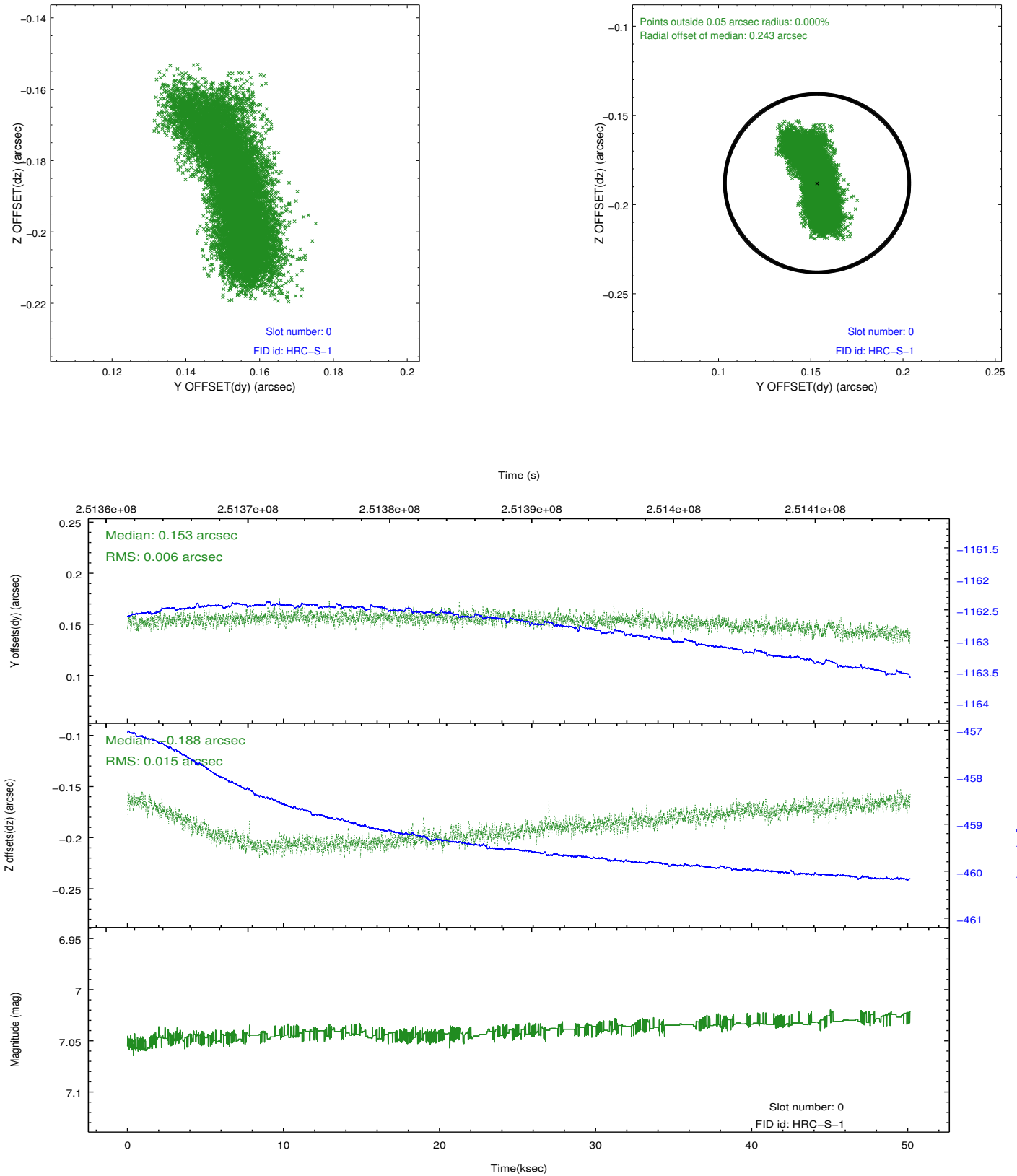


2.4.4 Slot 7

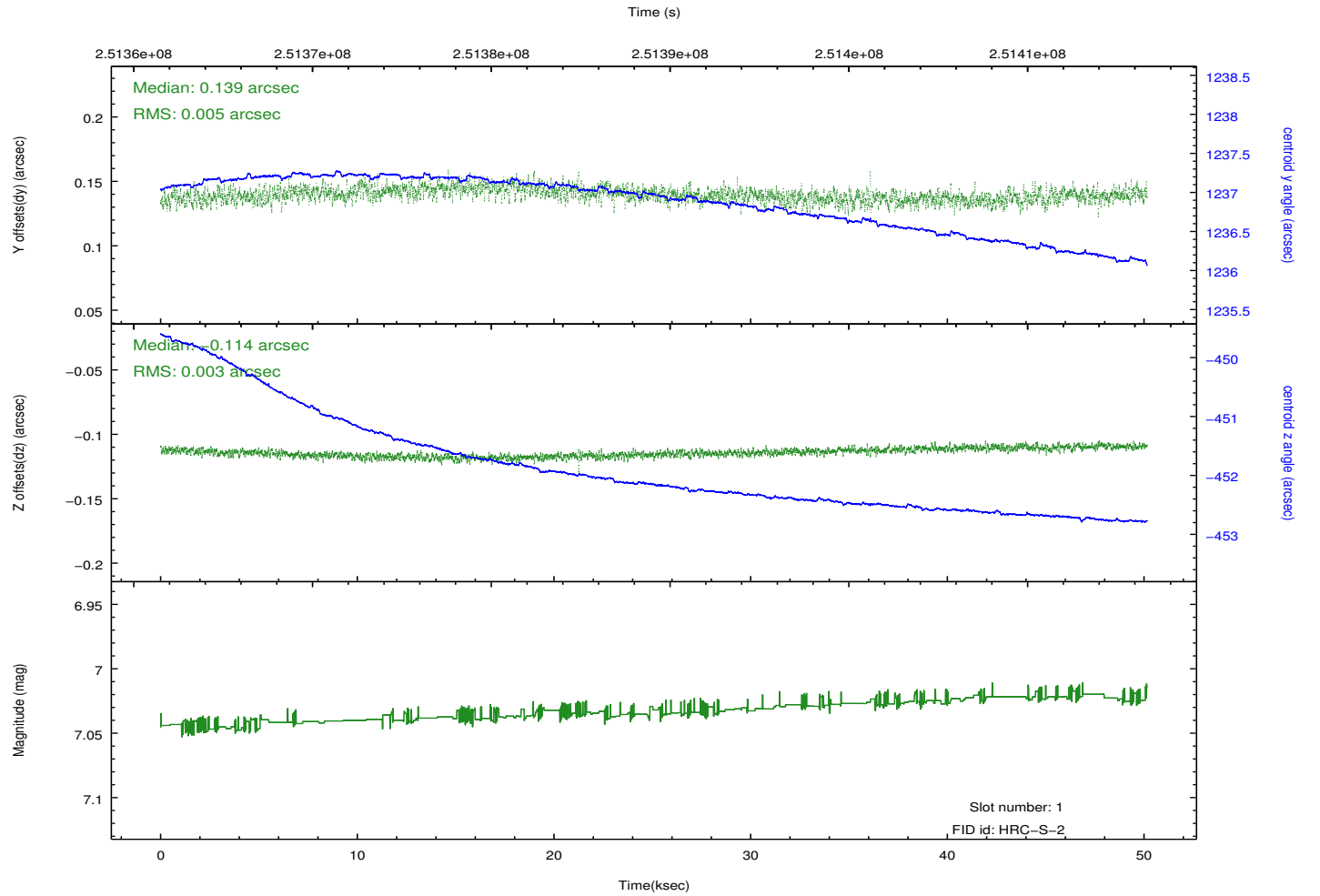
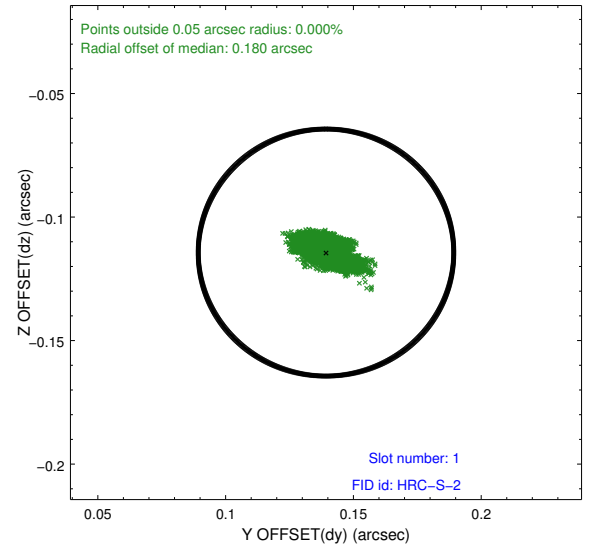
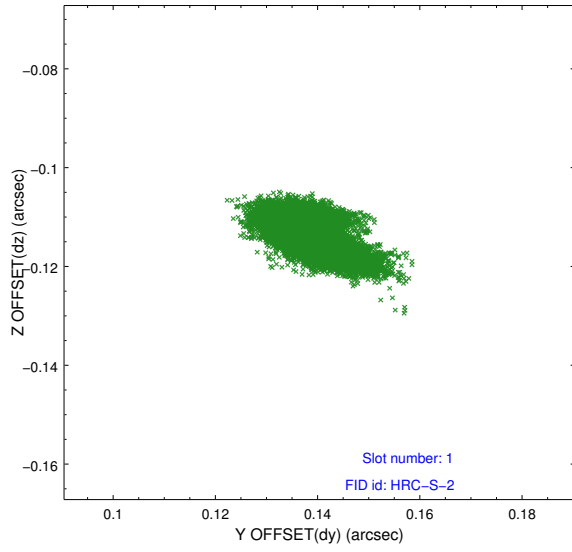


2.5 FID Slots

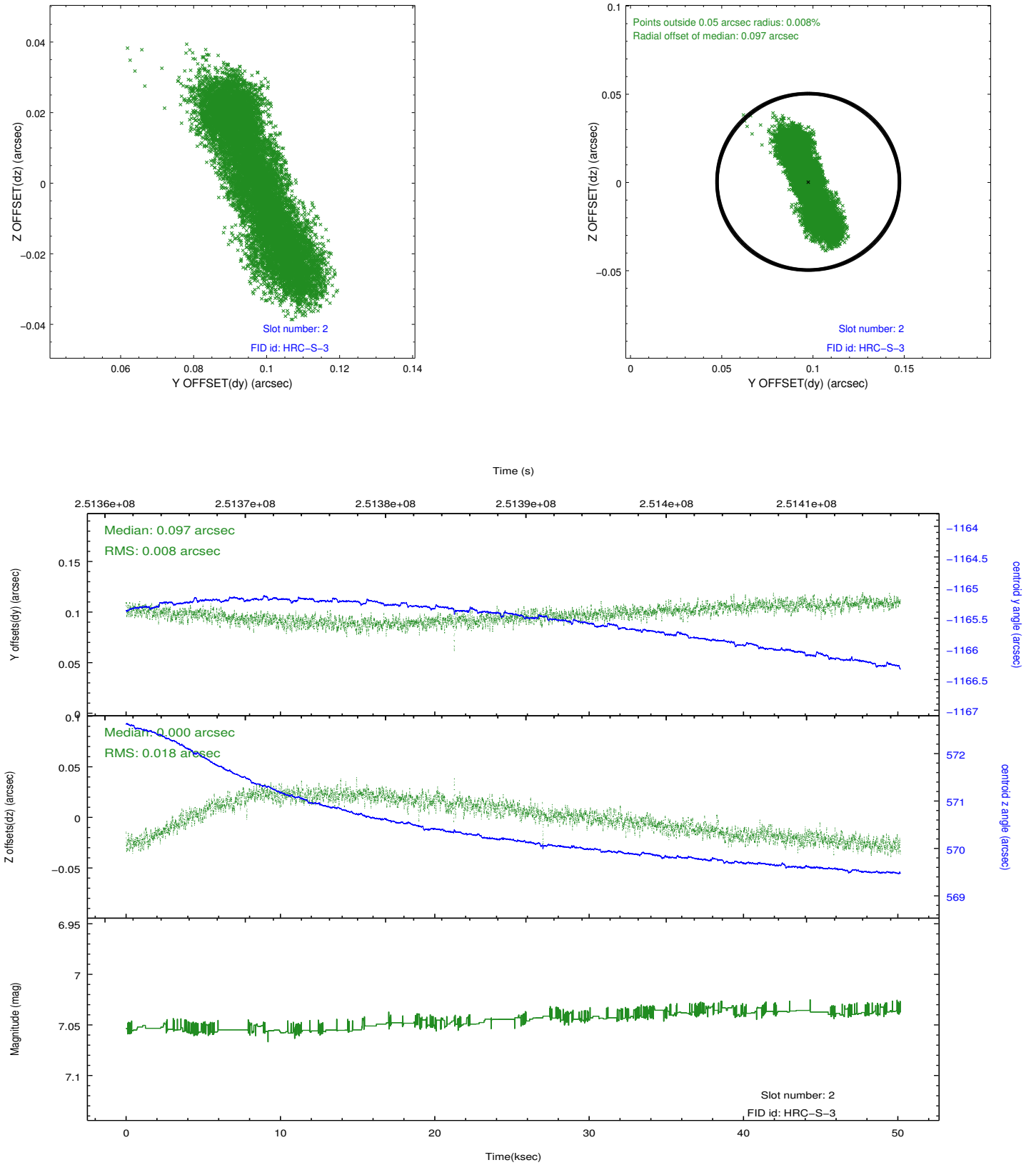
2.5.1 Slot 0



2.5.2 Slot 1



2.5.3 Slot 2



A Summary

A.1 Status

V&V Scientist	Beth Sundheim
V&V Date (YYYY-MM-DD)	2013.07.02
V&V Edition	1
V&V Disposition and Status	OK
V&V Charge Time	50.16247

A.2 Comments

The guide star in slot 5 was removed from the aspect solution due to poor data quality. The aspect solution is improved by the removal of this star from the solution.