

# V&V Reference Report

## L2 ASCDS Version : 8.4.3

Observation 55082 - L2 Version 2  
Chandra X-Ray Center

L2 Processing Date : Feb 26 2012

## Contents

<b>1</b>	<b>Front</b>	<b>2</b>
<b>2</b>	<b>OBI</b>	<b>3</b>
2.1	OBI . . . . .	3
2.1.1	Images . . . . .	3
2.1.2	Bias . . . . .	3
2.1.3	Parameters . . . . .	4
2.1.4	Events . . . . .	4
2.2	Compared Parameters . . . . .	5
2.3	Star Slots . . . . .	6
2.4	FID Slots . . . . .	6
<b>A</b>	<b>Summary</b>	<b>7</b>
A.1	Status . . . . .	7
A.2	Comments . . . . .	7

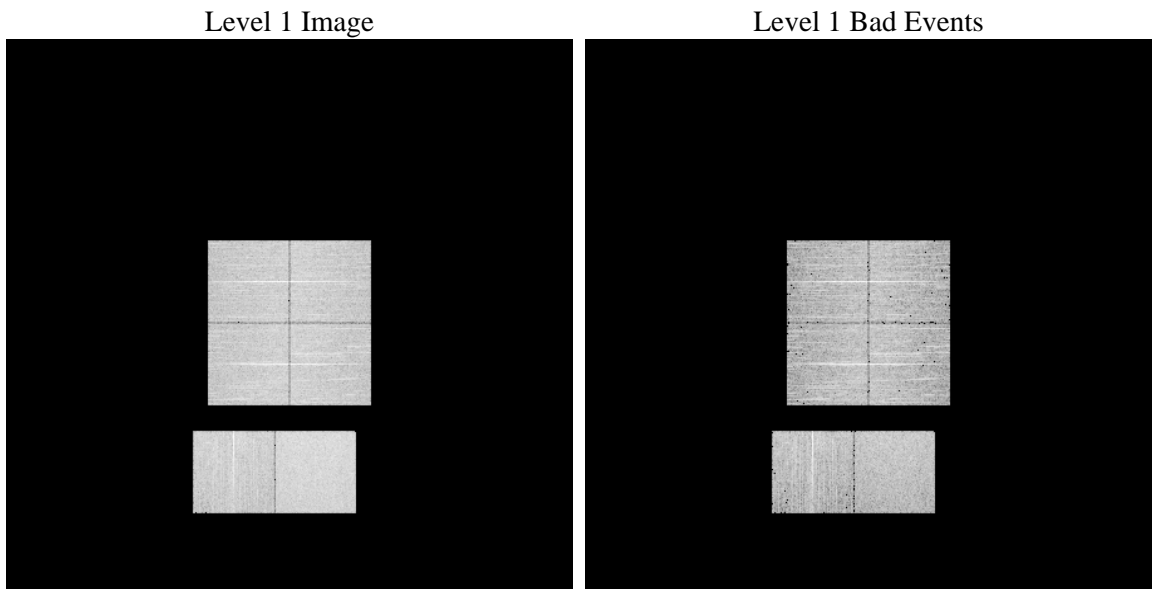
# 1 Front

seq_num	&#160	Sequence number
obs_id	55082	Observation id
title	ACIS-012367 diagnostics	Proposal title
observer	CHANDRA engineering request/realtime commanding	Principal investig
object	&#160	Source name
dtcycle	0	&#160
cycle	P	events from which exps? Prim/Second/Both
ra_targ	0.0	Observer's specified target RA [deg]
dec_targ	0.0	Observer's specified target Dec [deg]
ra_nom	26.090986611409	Nominal RA [deg]
dec_nom	-1.1071770750558	Nominal Dec [deg]
roll_nom	232.2901949438	Nominal Roll [deg]
revision	2	Processing version of data
ontime	6950.3999741673	Sum of GTIs [s]
livetime	6862.389824666	Livetime [s]
ontime0	6950.3999741673	Sum of GTIs [s]
ontime1	6950.3999741673	Sum of GTIs [s]
ontime2	6950.3999741673	Sum of GTIs [s]
ontime3	6950.3999741673	Sum of GTIs [s]
ontime6	6950.3999741673	Sum of GTIs [s]
ontime7	6950.3999741673	Sum of GTIs [s]
l2events	237720	Number of level 2 events

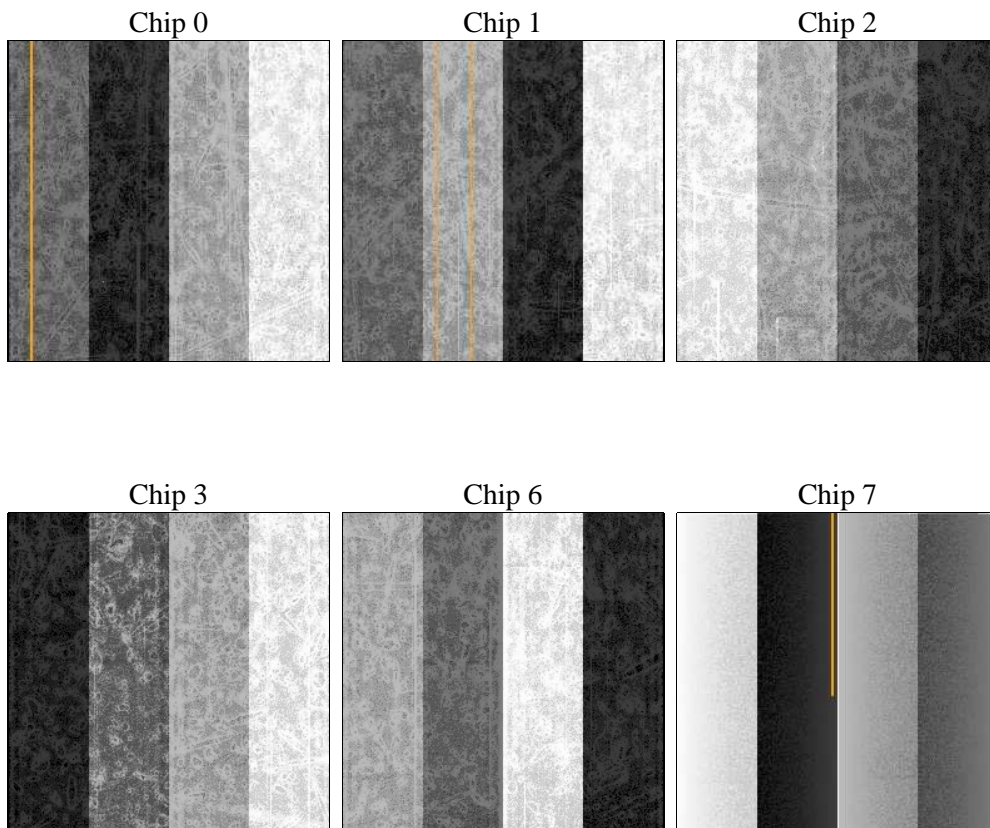
## 2 OBI

### 2.1 OBI

#### 2.1.1 Images



#### 2.1.2 Bias



### 2.1.3 Parameters

obi_num	0	Obi number	sched_exp_time	0.0	[s] Scheduled observation exposure time
ascdsver	8.4.3	Processing system revision	ontime	6950.3999741673	Sum of GTIs [s]
caldbver	4.4.8	&#160	ontime0	6950.3999741673	Sum of GTIs [s]
date	2012-02-26T05:21:56	Date and time of file creation	ontime1	6950.3999741673	Sum of GTIs [s]
revision	2	Processing version of data	ontime2	6950.3999741673	Sum of GTIs [s]
			ontime3	6950.3999741673	Sum of GTIs [s]
			ontime6	6950.3999741673	Sum of GTIs [s]
			ontime7	6950.3999741673	Sum of GTIs [s]
			l1events	534197	Number of level 1 events

### 2.1.4 Events

	ccd 0	ccd 1	ccd 2	ccd 3	ccd 6	ccd 7		ccd 0	ccd 1	ccd 2	ccd 3	ccd 6	ccd 7
level 1 events	81690	83449	84555	85545	87752	111206	grade 0 events	20380	19856	21120	21133	20553	10208
rejected events	44036	45415	46445	47793	48594	50306		24%	23%	24%	24%	23%	9%
rejected %	53%	54%	54%	55%	55%	45%	grade 1 events	101	99	125	126	100	63
								0%	0%	0%	0%	0%	0%
							grade 2 events	7105	7866	6898	6741	7673	13681
								8%	9%	8%	7%	8%	12%
							grade 3 events	2615	2583	2758	2659	2563	5400
								3%	3%	3%	3%	2%	4%
							grade 4 events	2570	2549	2621	2674	2563	5380
								3%	3%	3%	3%	2%	4%
							grade 5 events	2785	2797	2733	3055	2882	7546
								3%	3%	3%	3%	3%	6%
							grade 6 events	6068	6261	5779	5661	6888	27951
								7%	7%	6%	6%	7%	25%
							grade 7 events	40066	41438	42521	43496	44530	40977
								49%	49%	50%	50%	50%	36%

## 2.2 Compared Parameters

Parameter	Planned	Actual
Instrument	ACIS	ACIS
Detector	ACIS-012367	ACIS-012367
Grating	NONE	NONE
Data mode	FAINT	FAINT
Observation mode	SECONDARY	SECONDARY
[deg] Pointing RA	0	26.09098661140925
[deg] Pointing Dec	0	-1.107177075055812
[deg] Pointing Roll	0.0	232.2901949437983
SIM focus pos (mm)	-1.4281808131	-1.4281808131
[mm] SIM defocus	0.1051557500557434	0.1051557500557434
SIM translation stage pos (mm)	250.4660330802	250.4660330802
[mm] SIM translation stage offset	-0.01005726120527584	-0.01005726120527584
[s] Observation start time (MET)	436632606.600262	436632606.600262
Observation start date	2011-11-02T14:50:07	2011-11-02T14:50:06
[s] Observation end time (MET)	436642098.84971	436642098.84971
Observation end date	2011-11-02T17:28:19	2011-11-02T17:28:18
Read mode	TIMED	TIMED

Parameter	Planned	Actual
Obspar format version number	7	7
Obspar file type	PREDICTED	ACTUAL
Obspar update status	OVERRIDE	OVERRIDE
Number of optional ACIS chips dropped	0	0
On-chip summing requested	N	N
Subarray requested	NONE	NONE
Alternating exposures requested	N	N
[s] Primary exposure time	3.2	3.2

## **2.3 Star Slots**

## **2.4 FID Slots**

## A Summary

### A.1 Status

V&V Scientist	Jen Lauer
V&V Date (YYYY-MM-DD)	2012.02.28
V&V Edition	1
V&V Disposition and Status	OK
V&V Charge Time	6.9503999741673

### A.2 Comments