

V&V Reference Report

L2 ASCDS Version : 8.4.3

Observation 55002 - L2 Version 2
Chandra X-Ray Center

L2 Processing Date : Feb 28 2012

Contents

1	Front	2
2	OBI	3
2.1	OBI	3
2.1.1	Images	3
2.1.2	Bias	3
2.1.3	Parameters	4
2.1.4	Events	4
2.2	Compared Parameters	5
2.3	Star Slots	6
2.4	FID Slots	6
A	Summary	7
A.1	Status	7
A.2	Comments	7

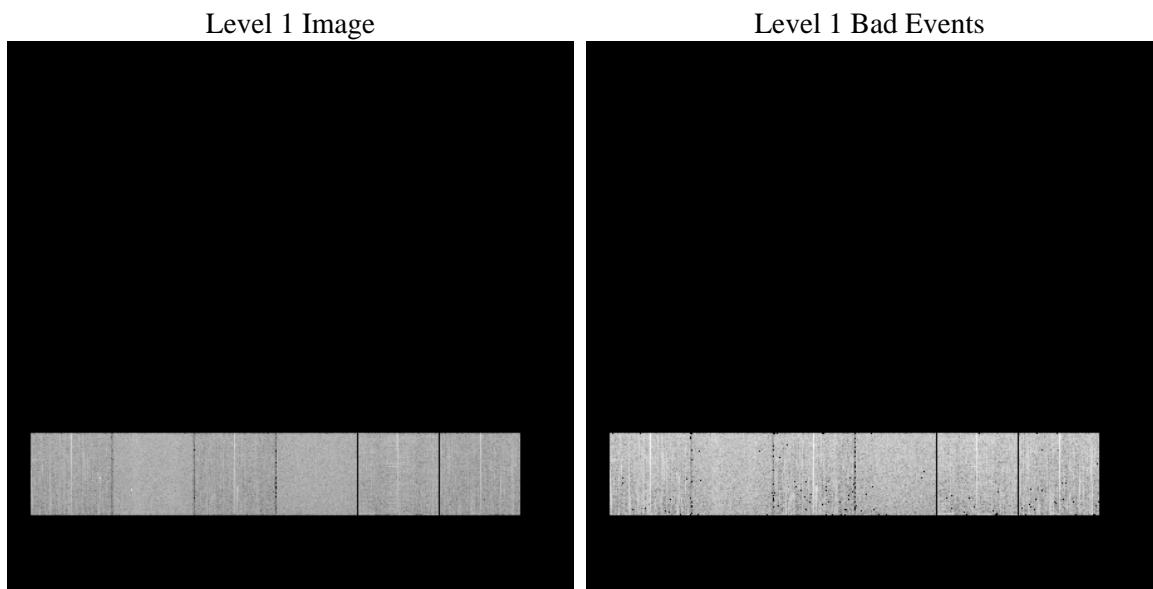
1 Front

seq_num	 	Sequence number
obs_id	55002	Observation id
title	ACIS-456789 diagnostics	Proposal title
observer	CHANDRA engineering request/realtime commanding	Principal investig
object	 	Source name
dtcycle	0	
cycle	P	events from which exps? Prim/Second/Both
ra_targ	0.0	Observer's specified target RA [deg]
dec_targ	0.0	Observer's specified target Dec [deg]
ra_nom	72.030270271206	Nominal RA [deg]
dec_nom	-1.982506162651	Nominal Dec [deg]
roll_nom	355.02495641943	Nominal Roll [deg]
revision	2	Processing version of data
ontime	5149.4042741656	Sum of GTIs [s]
livetime	5084.1994166471	Livetime [s]
ontime4	5151.9999808669	Sum of GTIs [s]
ontime5	5149.4453141689	Sum of GTIs [s]
ontime6	5149.4863541722	Sum of GTIs [s]
ontime7	5149.4042741656	Sum of GTIs [s]
ontime8	5151.9999808669	Sum of GTIs [s]
ontime9	5149.3632341623	Sum of GTIs [s]
l2events	193319	Number of level 2 events

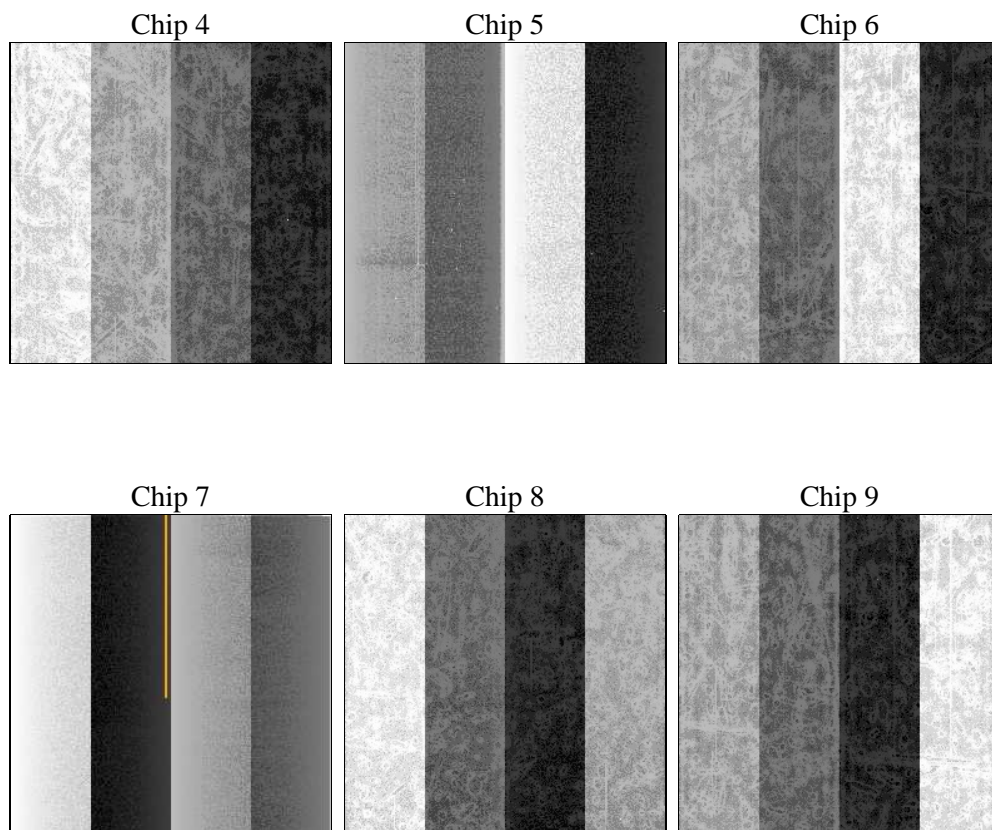
2 OBI

2.1 OBI

2.1.1 Images



2.1.2 Bias



2.1.3 Parameters

obi_num	0	Obi number	sched_exp_time	0.0	[s] Scheduled observation exposure time
ascdsver	8.4.3	Processing system revision	ontime	5149.4042741656	Sum of GTIs [s]
caldbver	4.4.8	 	ontime4	5151.9999808669	Sum of GTIs [s]
date	2012-02-28T04:39:08	Date and time of file creation	ontime5	5149.4453141689	Sum of GTIs [s]
revision	2	Processing version of data	ontime6	5149.4863541722	Sum of GTIs [s]
			ontime7	5149.4042741656	Sum of GTIs [s]
			ontime8	5151.9999808669	Sum of GTIs [s]
			ontime9	5149.3632341623	Sum of GTIs [s]
			l1events	453090	Number of level 1 events

2.1.4 Events

	ccd 4	ccd 5	ccd 6	ccd 7	ccd 8	ccd 9		ccd 4	ccd 5	ccd 6	ccd 7	ccd 8	ccd 9
level 1 events	70398	86513	67278	83286	77809	67806	grade 0 events	15394	4453	14060	7188	16288	14228
rejected events	43411	39192	38706	37626	42654	40508		21%	5%	20%	8%	20%	20%
rejected %	61%	45%	57%	45%	54%	59%	grade 1 events	131	106	65	78	86	91
								0%	0%	0%	0%	0%	0%
							grade 2 events	4145	17471	5956	10182	6933	4914
								5%	20%	8%	12%	8%	7%
							grade 3 events	1947	1578	1759	3745	2713	1900
								2%	1%	2%	4%	3%	2%
							grade 4 events	1969	1489	1730	3885	2619	1870
								2%	1%	2%	4%	3%	2%
							grade 5 events	2154	4413	2153	5391	2973	2525
								3%	5%	3%	6%	3%	3%
							grade 6 events	3532	22330	5067	20660	6602	4386
								5%	25%	7%	24%	8%	6%
							grade 7 events	41126	34673	36488	32157	39595	37892
								58%	40%	54%	38%	50%	55%

2.2 Compared Parameters

Parameter	Planned	Actual	Parameter	Planned	Actual
Instrument	ACIS	ACIS	Obspar format version number	7	7
Detector	ACIS-456789	ACIS-456789	Obspar file type	PREDICTED	ACTUAL
Grating	NONE	NONE	Obspar update status	NONE	UPDATED
Data mode	FAINT	FAINT	Number of optional ACIS chips dropped	0	0
Observation mode	SECONDARY	SECONDARY	On-chip summing requested	N	N
[deg] Pointing RA	0	72.03027027120555	Subarray requested	NONE	NONE
[deg] Pointing Dec	0	-1.982506162651029	Alternating exposures requested	N	N
[deg] Pointing Roll	0.0	355.0249564194307	[s] Primary exposure time	3.2	3.2
[mm] SIM focus pos	-1.429586	-1.428180813131781			
[mm] SIM defocus	0.1037507710433287	0.1051558262725154			
[mm] SIM translation stage pos	250.455976	250.466033080201			
[mm] SIM translation stage offset	0	-0.01005468664627074			
[s] Observation start time (MET)	439829684.268728	439829683.24373			
Observation start date	2011-12-09T14:54:44	2011-12-09T14:54:43			
[s] Observation end time (MET)	439838925.669215	439838924.64422			
Observation end date	2011-12-09T17:28:46	2011-12-09T17:28:44			
Read mode	TIMED	TIMED			

2.3 Star Slots

2.4 FID Slots

A Summary

A.1 Status

V&V Scientist	Beth Sundheim
V&V Date (YYYY-MM-DD)	2012.02.29
V&V Edition	1
V&V Disposition and Status	OK
V&V Charge Time	5.1494042741656

A.2 Comments