

V&V Reference Report

L2 ASCDS Version : 8.5.1.1

Observation 5382 - L2 Version 3
Chandra X-Ray Center

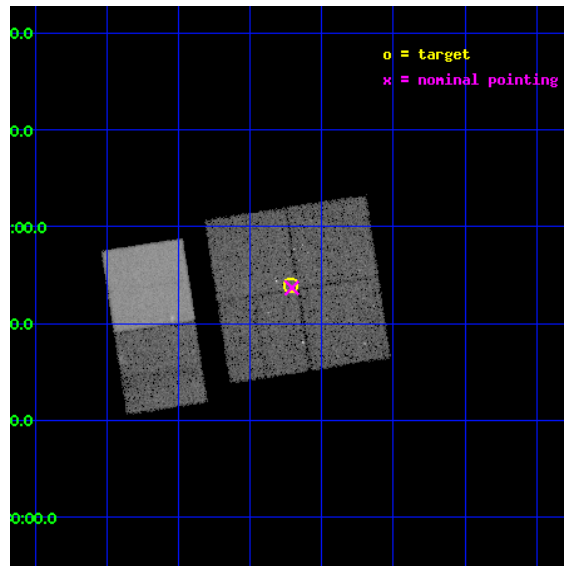
L2 Processing Date : Dec 21 2012

Contents

1	Front	2
2	OBI	3
2.1	OBI	3
2.1.1	Images	3
2.1.2	Bias	3
2.1.3	Parameters	4
2.1.4	Events	4
2.2	Compared Parameters	5
2.3	Aspect	6
2.4	Star Slots	9
2.4.1	Slot 3	9
2.4.2	Slot 4	10
2.4.3	Slot 5	11
2.4.4	Slot 6	12
2.4.5	Slot 7	13
2.5	FID Slots	14
2.5.1	Slot 0	14
2.5.2	Slot 1	15
2.5.3	Slot 2	16
A	Summary	17
A.1	Status	17
A.2	Comments	17

1 Front

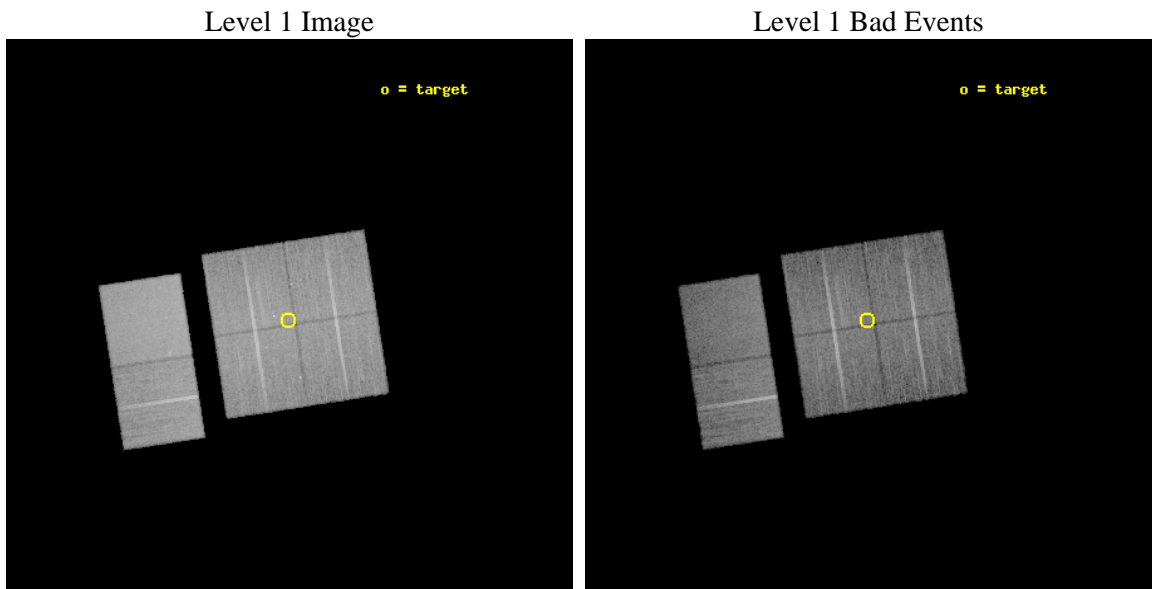
seq_num	200317	Sequence number
obs_id	5382	Observation id
title	X-ray Imaging of McNeil's Star: Witnessing the Onset of an Accretion Burst	Proposal title
observer	Dr. Joel Kastner	Principal investigator
object	IRAS05436-0007	Source name
dtcycle	0	
cycle	P	events from which exps? Prim/Second/Both
ra_targ	86.554583	Observer's specified target RA [deg]
dec_targ	-0.101389	Observer's specified target Dec [deg]
ra_nom	86.55214878206	Nominal RA [deg]
dec_nom	-0.1053277303979	Nominal Dec [deg]
roll_nom	261.2214139865	Nominal Roll [deg]
revision	3	Processing version of data
ontime	18441.5999313	Sum of GTIs [s]
livetime	18208.081288771	Livetime [s]
ontime0	18438.358951002	Sum of GTIs [s]
ontime1	18441.5999313	Sum of GTIs [s]
ontime2	18441.5999313	Sum of GTIs [s]
ontime3	18441.5999313	Sum of GTIs [s]
ontime6	18441.5999313	Sum of GTIs [s]
ontime7	18441.5999313	Sum of GTIs [s]
l2events	154187	Number of level 2 events



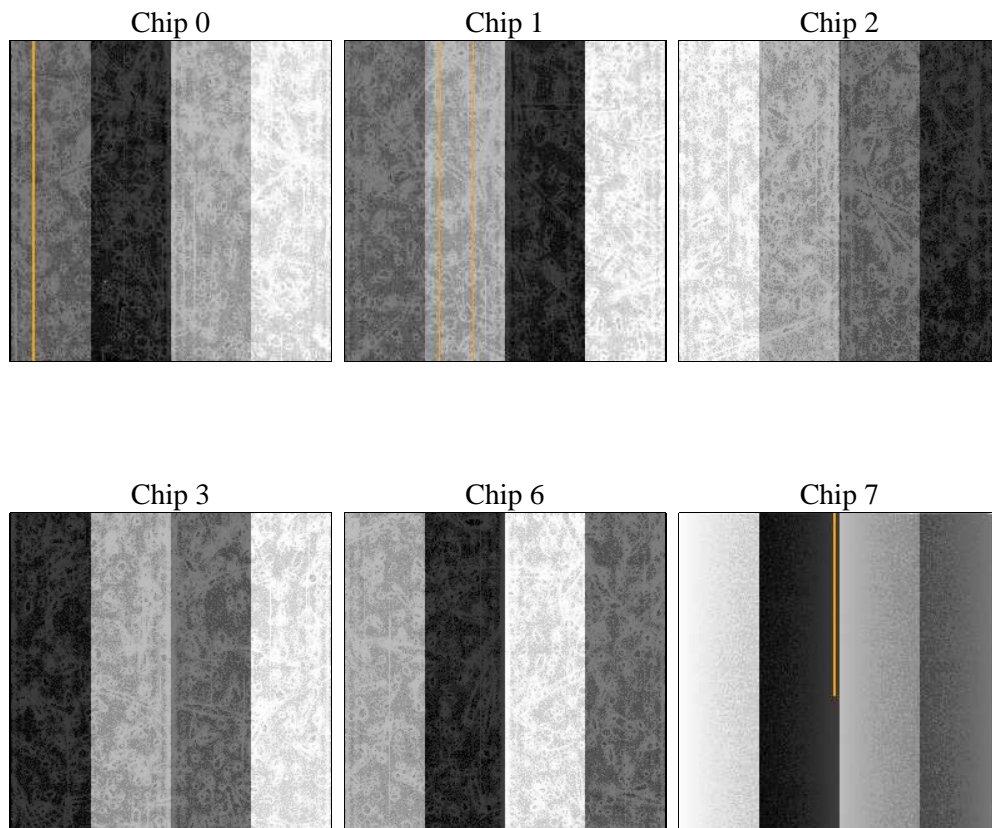
2 OBI

2.1 OBI

2.1.1 Images



2.1.2 Bias



2.1.3 Parameters

obi_num	0	Obi number	sched_exp_time	18304.407000	[s] Scheduled observation exposure time
ascdsver	8.5.1.1	Processing system revision	ontime	18441.5999313	Sum of GTIs [s]
caldsver	4.5.5	 	ontime0	18438.358951002	Sum of GTIs [s]
date	2012-12-22T01:35:23	Date and time of file creation	ontime1	18441.5999313	Sum of GTIs [s]
revision	3	Processing version of data	ontime2	18441.5999313	Sum of GTIs [s]
			ontime3	18441.5999313	Sum of GTIs [s]
			ontime6	18441.5999313	Sum of GTIs [s]
			ontime7	18441.5999313	Sum of GTIs [s]
			l1events	894502	Number of level 1 events

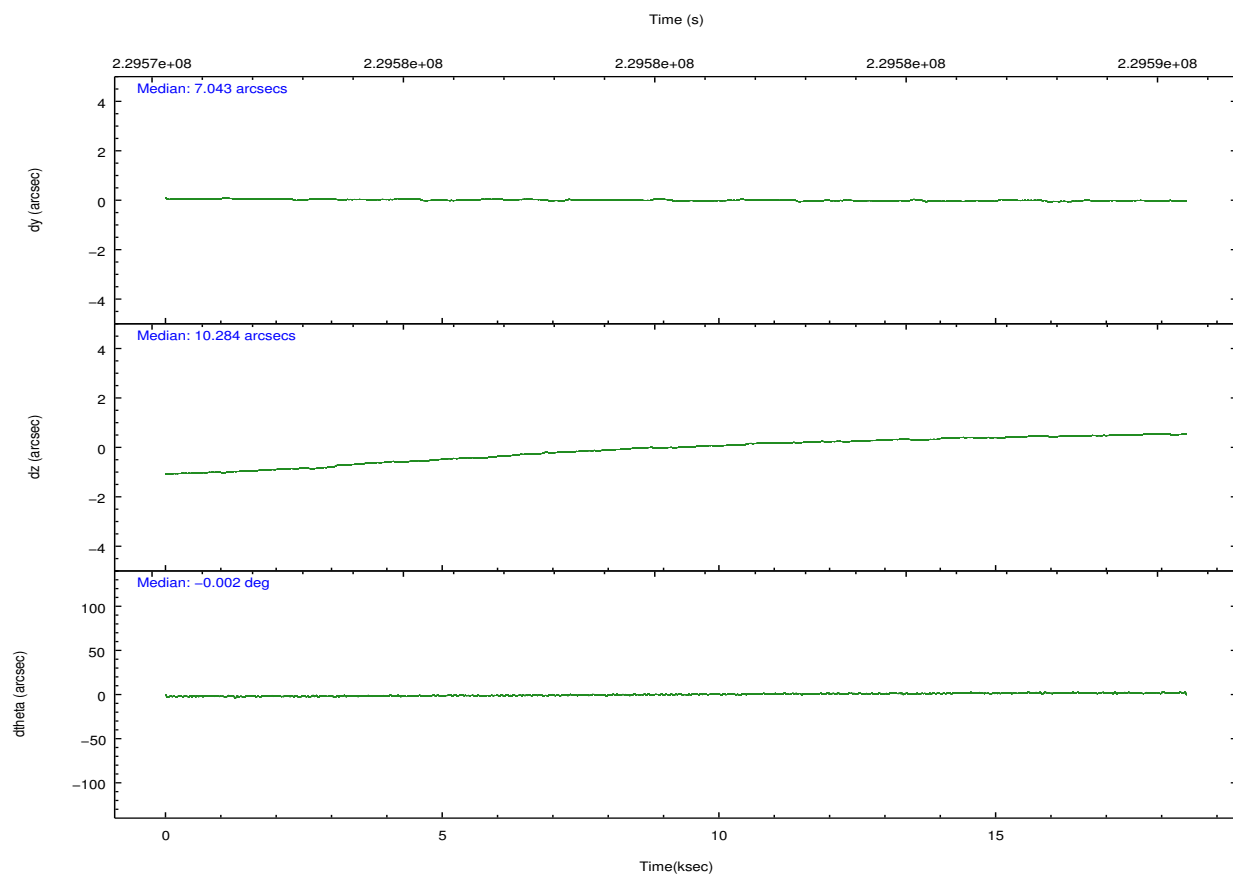
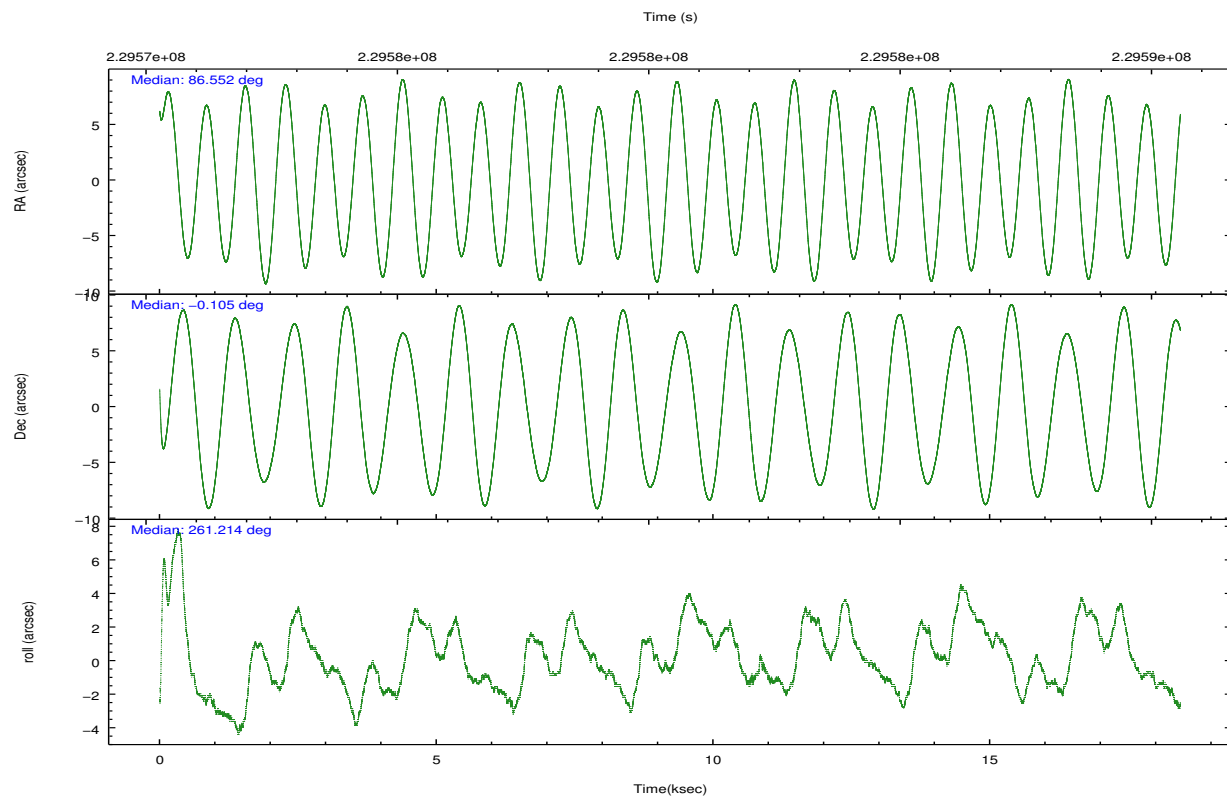
2.1.4 Events

	ccd 0	ccd 1	ccd 2	ccd 3	ccd 6	ccd 7		ccd 0	ccd 1	ccd 2	ccd 3	ccd 6	ccd 7
level 1 events	129359	134940	141003	144524	149378	195298	grade 0 events	7481	7426	8133	8333	7029	7243
rejected events	112222	116567	123603	126618	131944	115426		5%	5%	5%	5%	4%	3%
rejected %	86%	86%	87%	87%	88%	59%	grade 1 events	85	78	82	120	87	173
								0%	0%	0%	0%	0%	0%
							grade 2 events	3735	4065	3533	3478	3701	16287
								2%	3%	2%	2%	2%	8%
							grade 3 events	1673	1812	1562	1701	1746	7067
								1%	1%	1%	1%	1%	3%
							grade 4 events	1579	1743	1599	1692	1696	7041
								1%	1%	1%	1%	1%	3%
							grade 5 events	5679	6085	5537	6714	6787	18368
								4%	4%	3%	4%	4%	9%
							grade 6 events	2975	3630	2840	2986	3550	43540
								2%	2%	2%	2%	2%	22%
							grade 7 events	106152	110101	117717	119500	124782	95579
								82%	81%	83%	82%	83%	48%

2.2 Compared Parameters

Parameter	Planned	Actual	Parameter	Planned	Actual
Instrument	ACIS	ACIS	Obspar format version number	7	7
Detector	ACIS-012367	ACIS-012367	Obspar file type	PREDICTED	ACTUAL
Grating	NONE	NONE	Obspar update status	NONE	UPDATED
Data mode	FAINT	FAINT	Number of optional ACIS chips dropped	0	0
Observation mode	POINTING	POINTING	On-chip summing requested	N	N
[deg] Pointing RA	86.542126	86.55214878206007	Subarray requested	NONE	NONE
[deg] Pointing Dec	-0.079842	-0.1053277303979004	Alternating exposures requested	N	N
[deg] Pointing Roll	261.012724	261.2214139864998	[s] Primary exposure time	0.000000	3.2
[mm] SIM focus pos	-0.782348	-0.7809083437167272			
[mm] SIM defocus	0	0.001439871863259334			
[mm] SIM translation stage pos	-233.592463	-233.5874344608287			
[mm] SIM translation stage offset	0	-0.005018542100998502			
[s] Observation start time (MET)	229571346.184000	229570140.44078			
Observation start date	2005-04-11T01:48:02	2005-04-11T01:29:00			
[s] Observation end time (MET)	229589650.184000	229589883.47917			
Observation end date	2005-04-11T06:53:06	2005-04-11T06:58:03			
Read mode	TIMED	TIMED			

2.3 Aspect

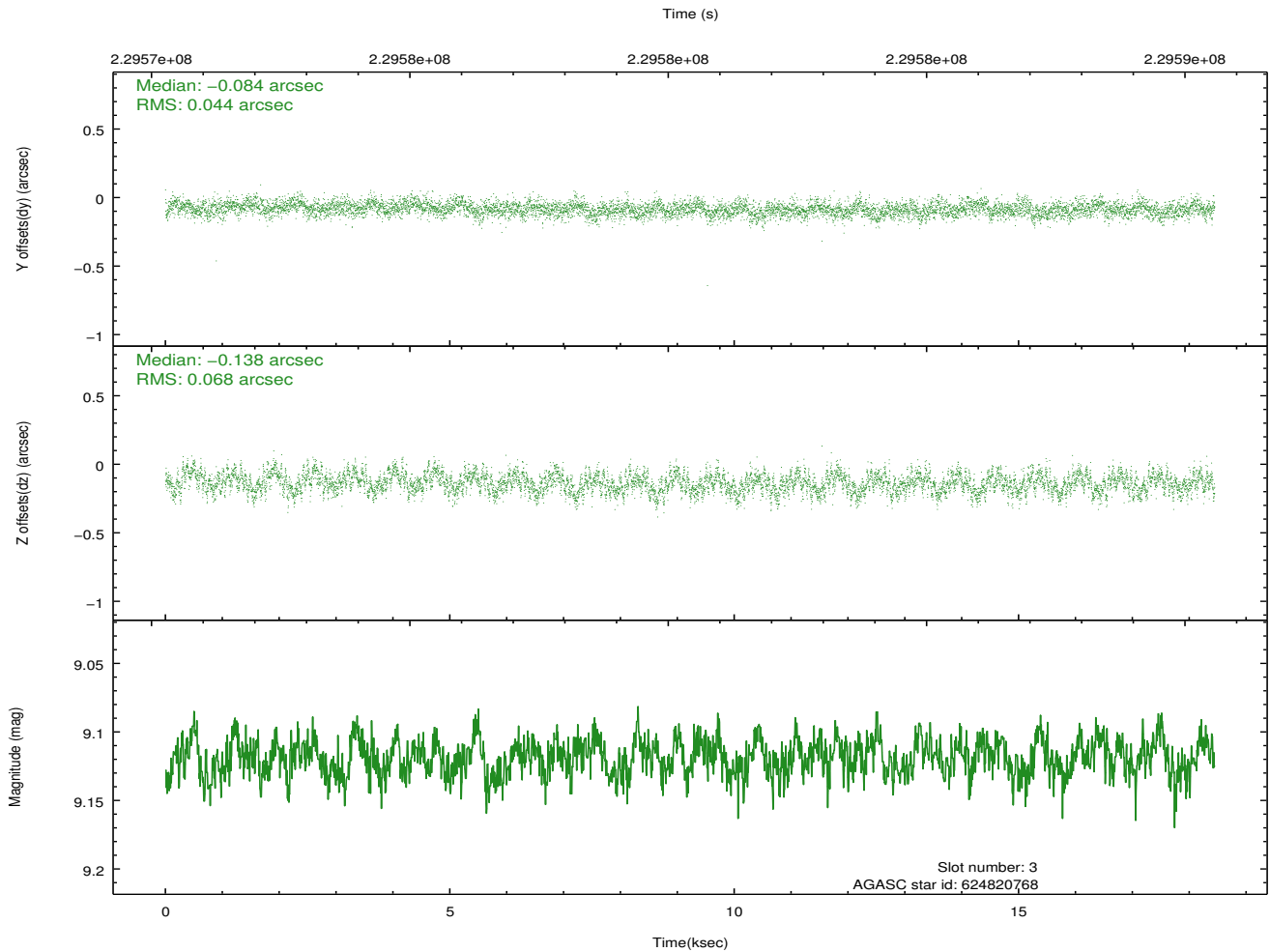
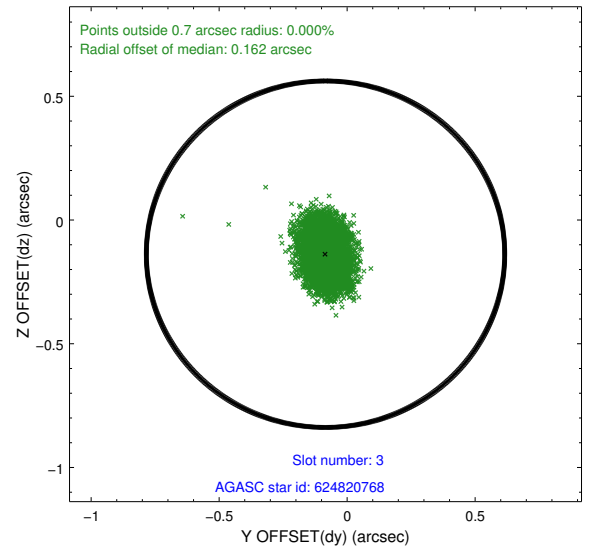
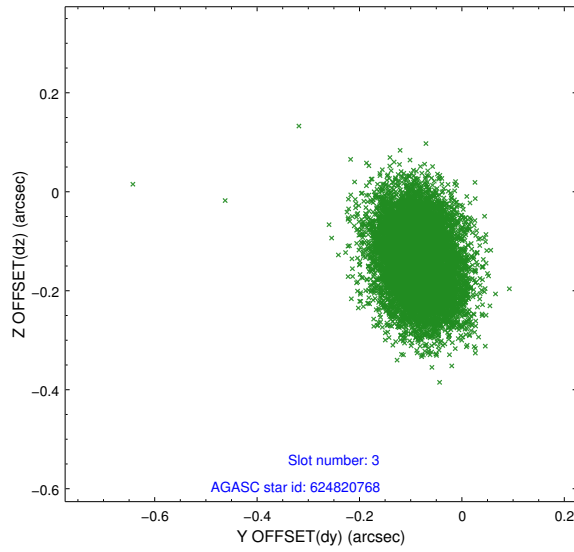


Slot Statistics

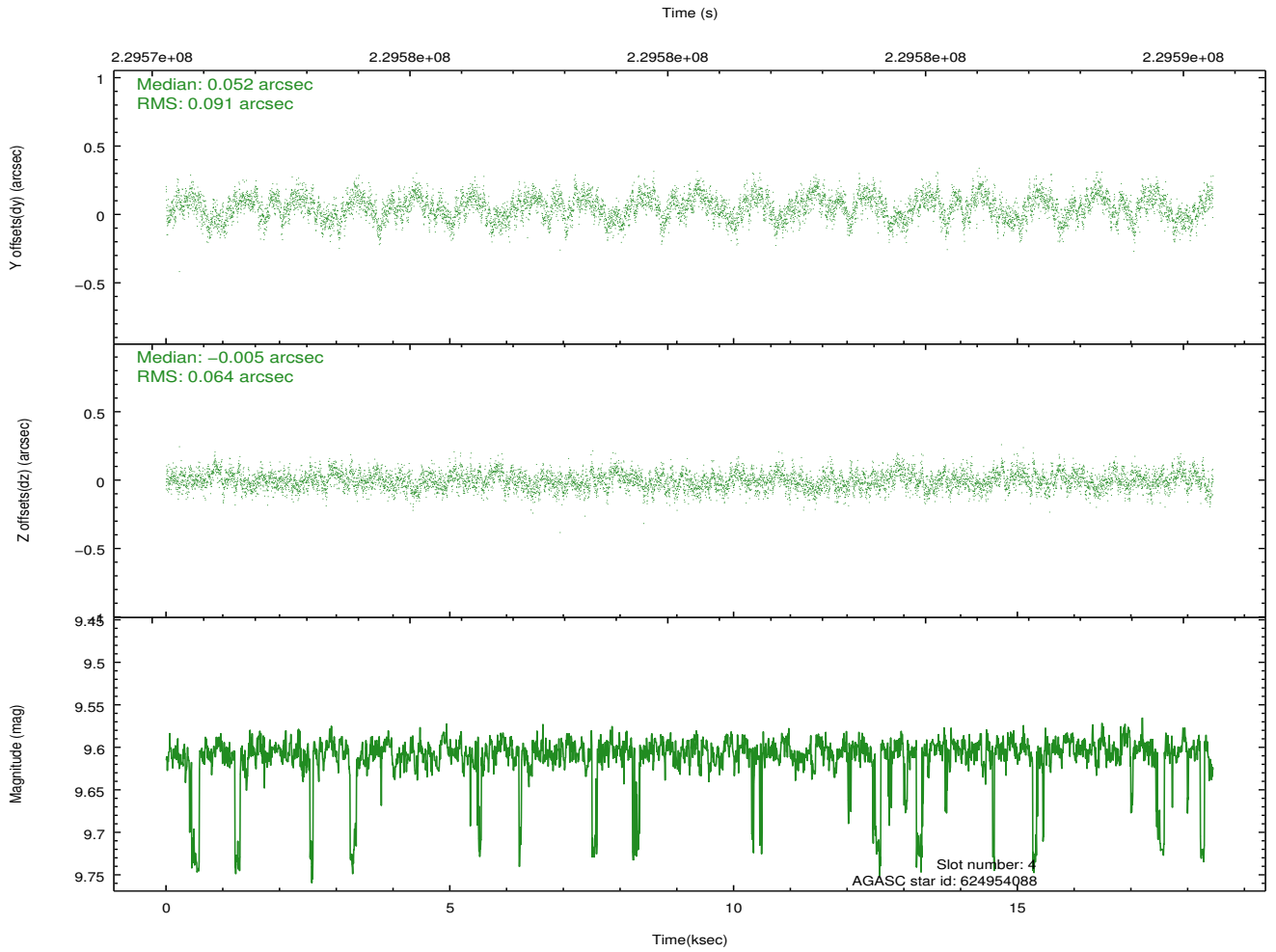
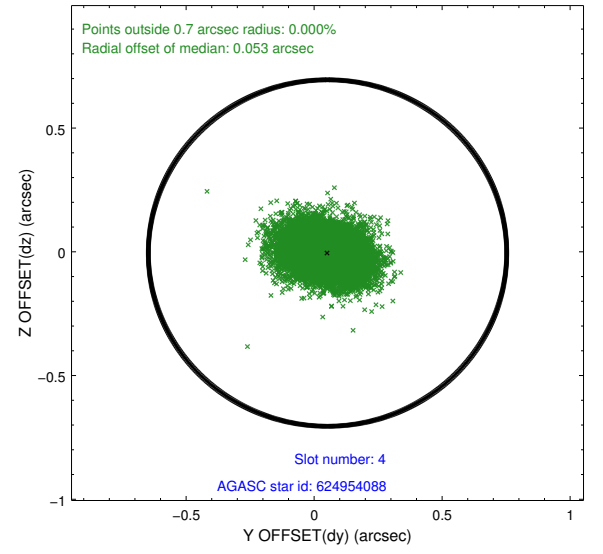
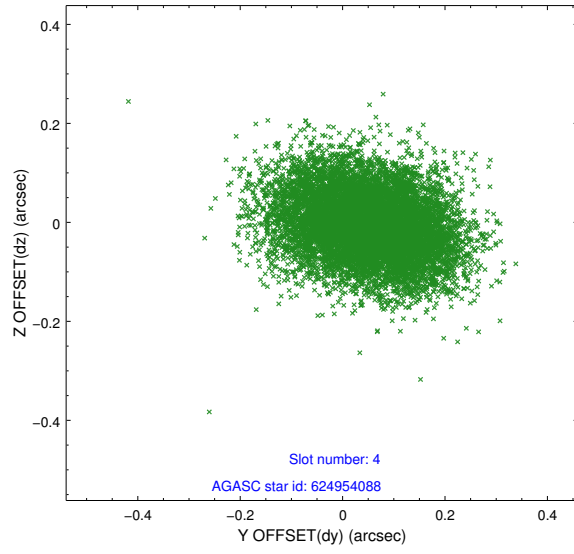
slot	status	id	mag	n_pts	med_dy	med_dz	dr1	dr2	ra	dec	mean_y	mean_z
0	FID	ACIS-I-1	7.24	4499	0.019	-0.010	0.030	0.064	0.000000	0.000000	932.64	-833.65
1	FID	ACIS-I-5	7.23	4499	-0.164	0.033	0.015	0.026	0.000000	0.000000	-1815.51	1063.78
2	FID	ACIS-I-6	7.26	4499	0.056	0.046	0.019	0.047	0.000000	0.000000	398.01	1708.52
3	GUIDE	624820768	9.12	8992	-0.084	-0.138	0.086	0.141	86.202480	-0.061953	127.73	-1218.05
4	GUIDE	624954088	9.61	8952	0.052	-0.005	0.119	0.193	86.606399	-0.671650	2068.45	561.34
5	GUIDE	624956456	8.03	8998	-0.007	0.171	0.070	0.112	87.042614	-0.748935	2098.03	2156.24
6	GUIDE	624954400	9.18	8993	-0.014	-0.136	0.092	0.157	86.607838	-0.762568	2391.09	617.88
7	GUIDE	624952480	7.69	8998	0.048	0.107	0.058	0.096	87.106269	-0.759614	2100.30	2388.52

2.4 Star Slots

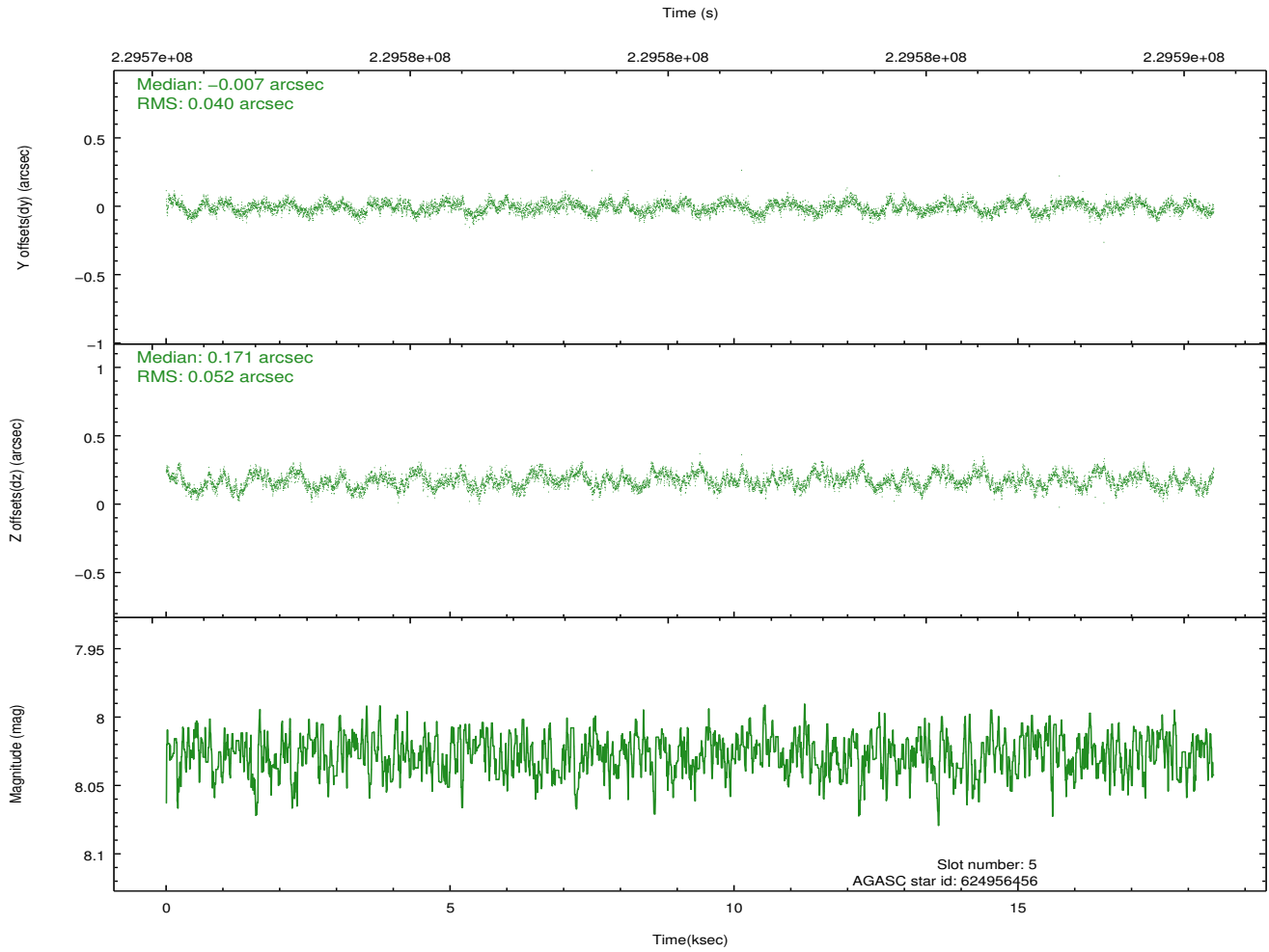
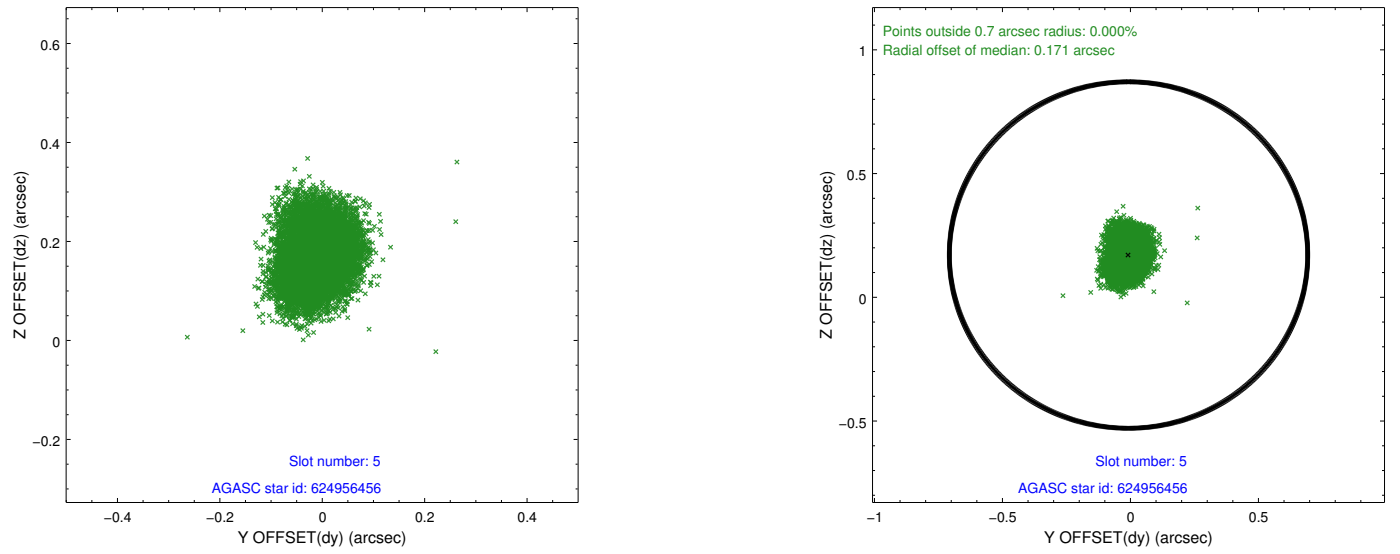
2.4.1 Slot 3



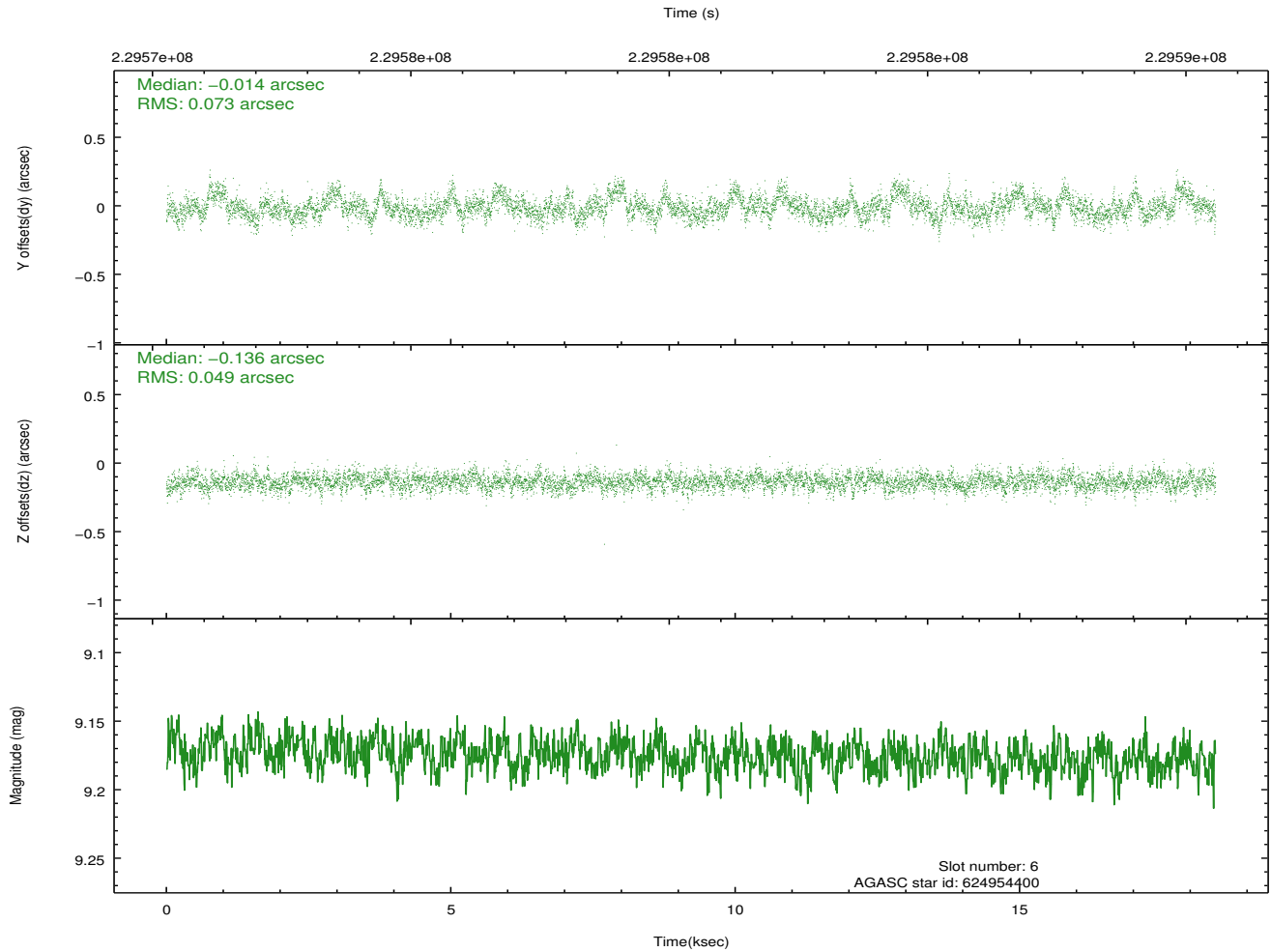
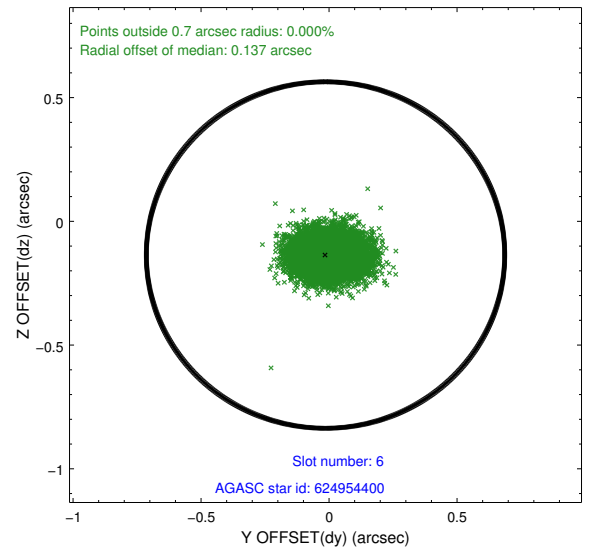
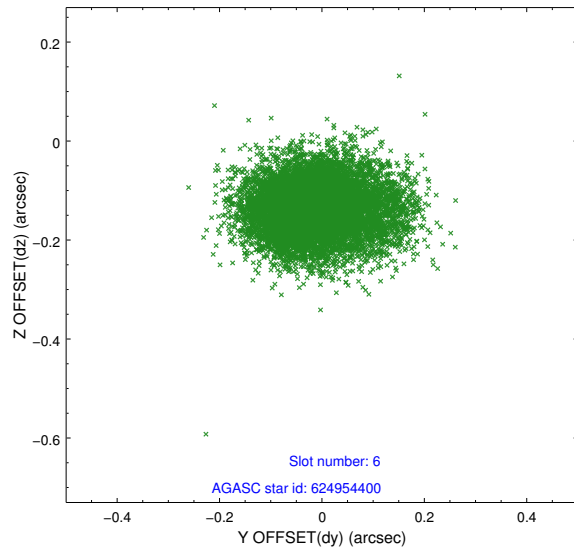
2.4.2 Slot 4



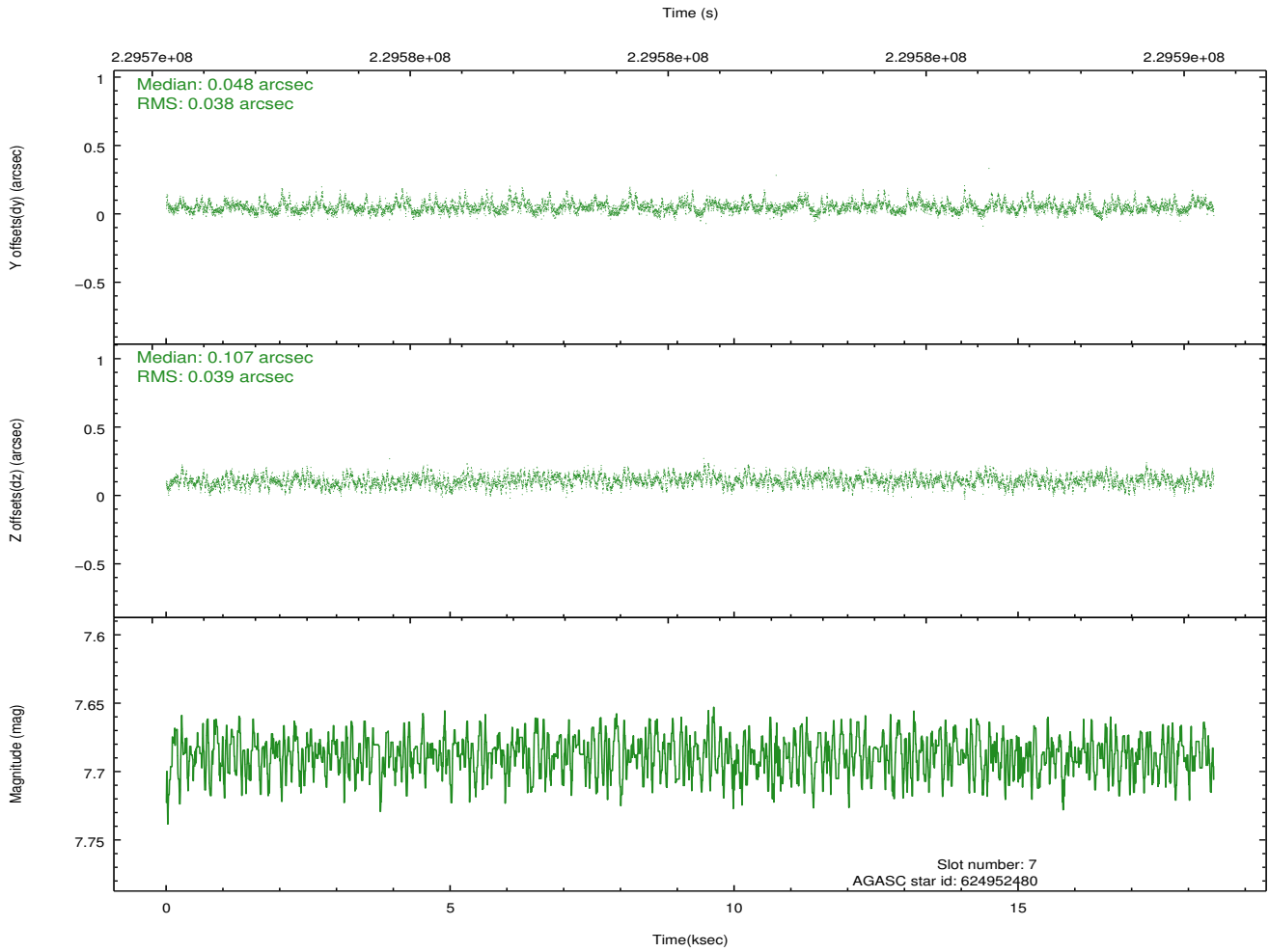
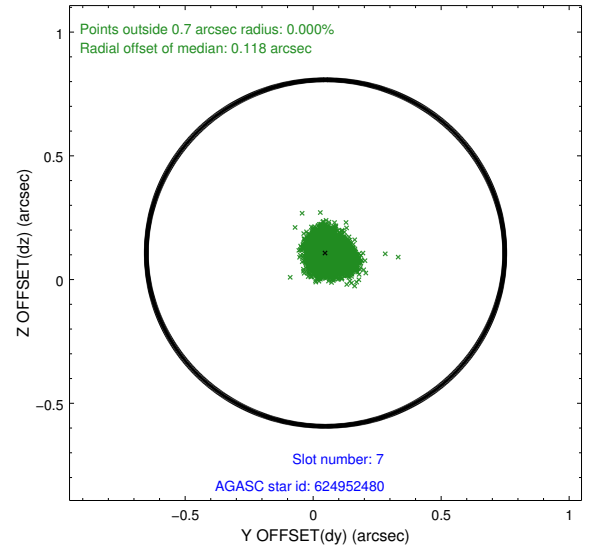
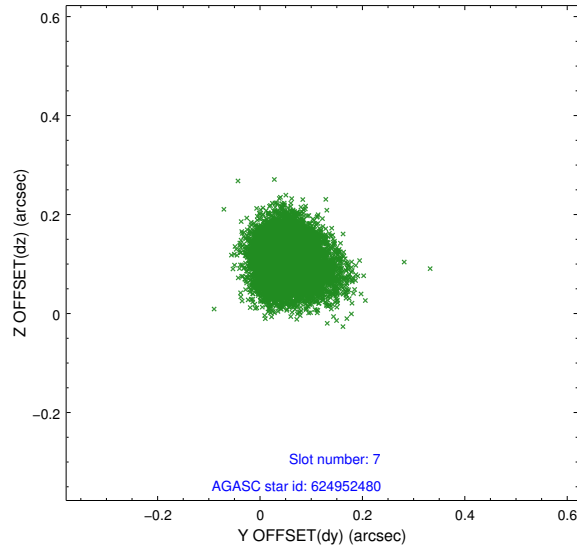
2.4.3 Slot 5



2.4.4 Slot 6

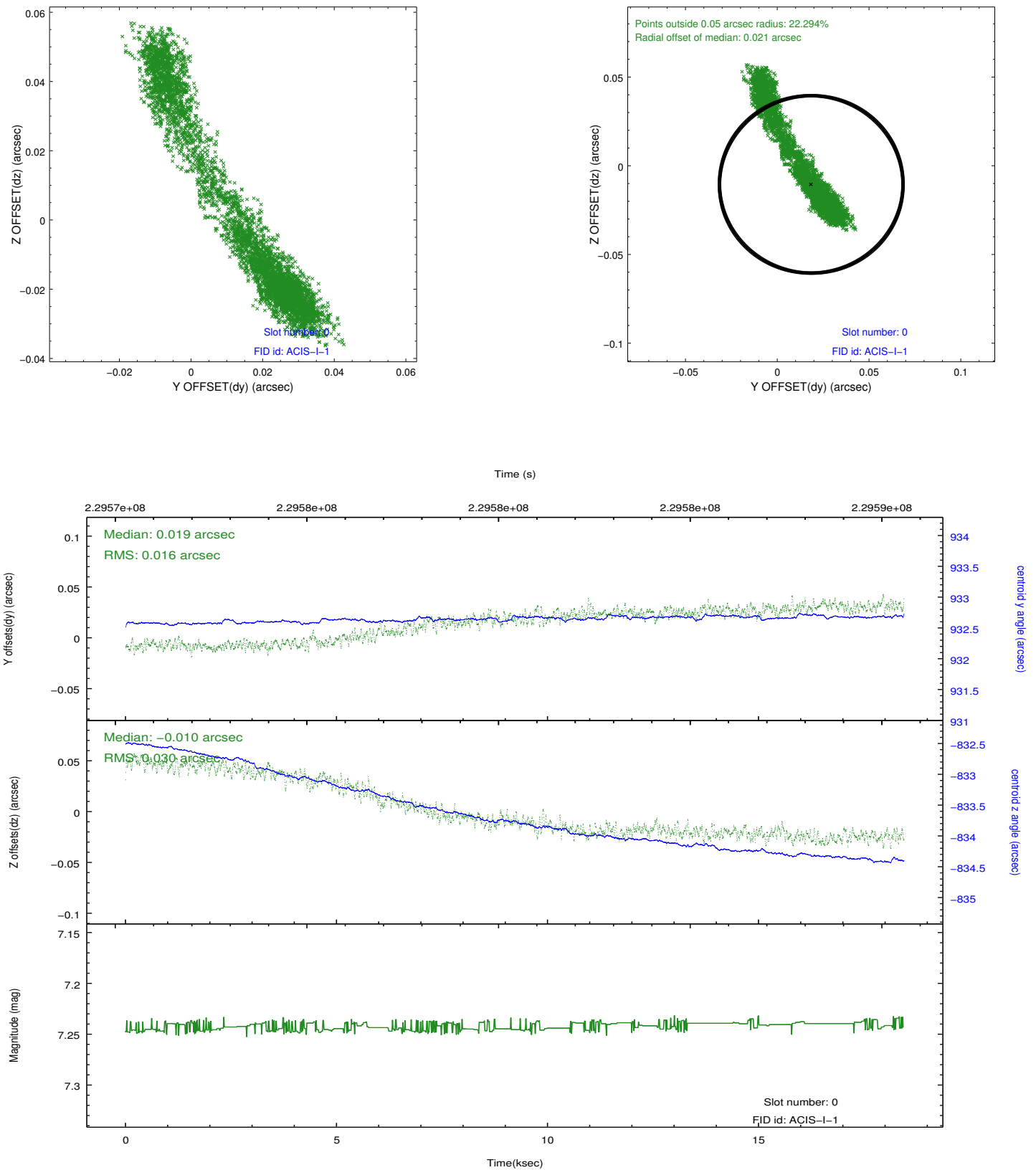


2.4.5 Slot 7

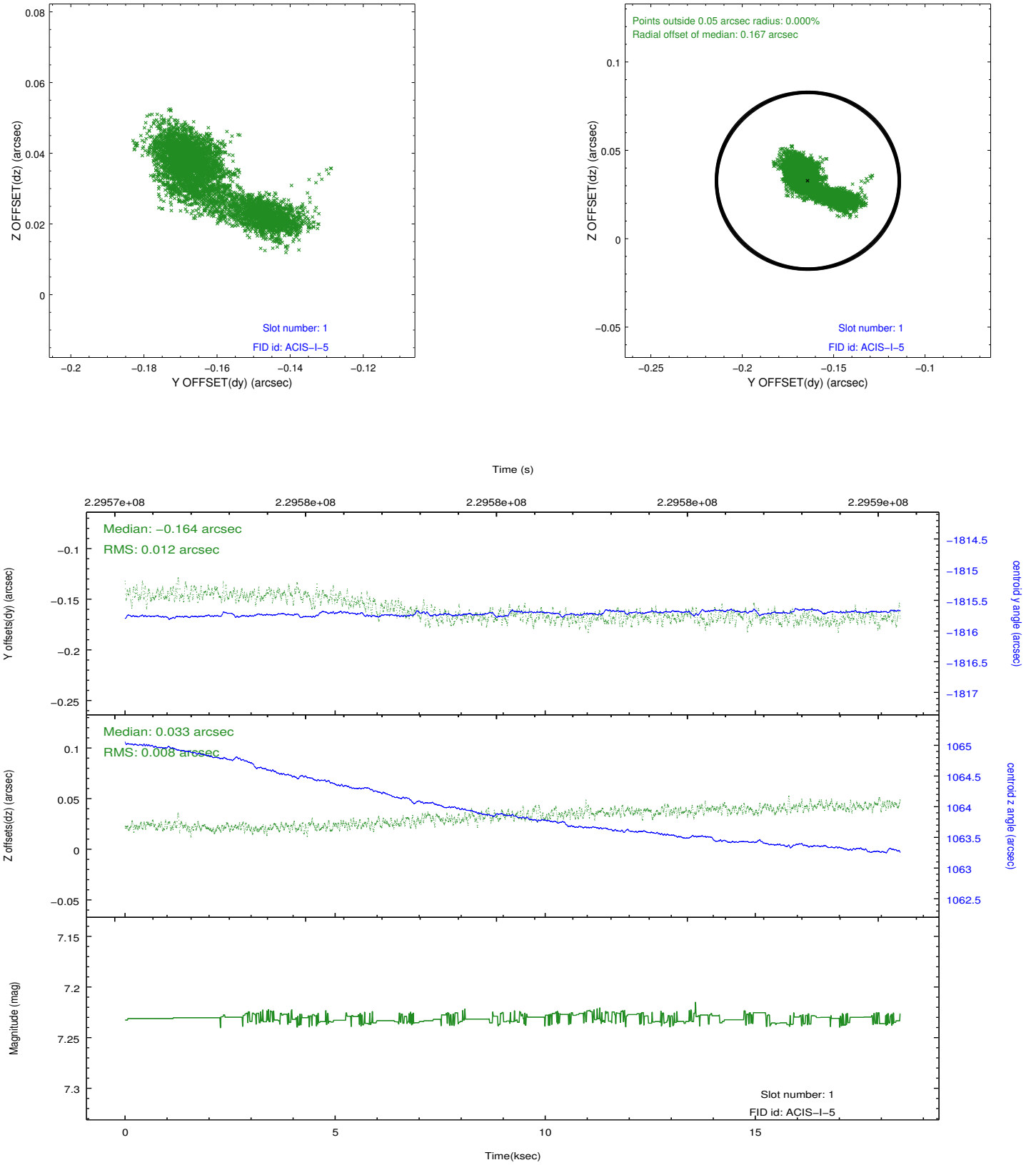


2.5 FID Slots

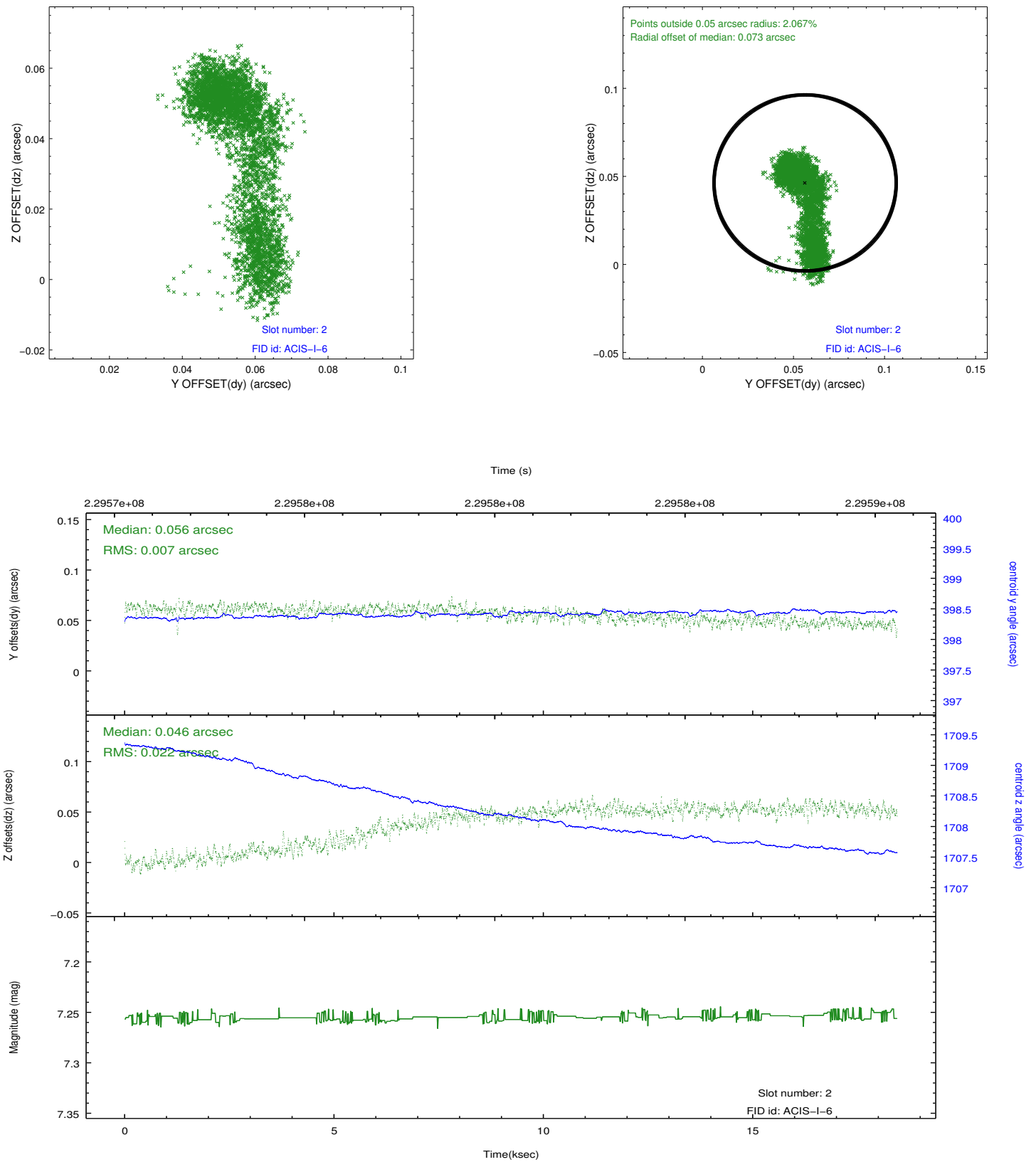
2.5.1 Slot 0



2.5.2 Slot 1



2.5.3 Slot 2



A Summary

A.1 Status

V&V Scientist	Jen Lauer
V&V Date (YYYY-MM-DD)	2013.01.15
V&V Edition	1
V&V Disposition and Status	OK
V&V Charge Time	18.44159

A.2 Comments