

V&V Reference Report

L2 ASCDS Version : 8.4.5

Observation 5292 - L2 Version 5
Chandra X-Ray Center

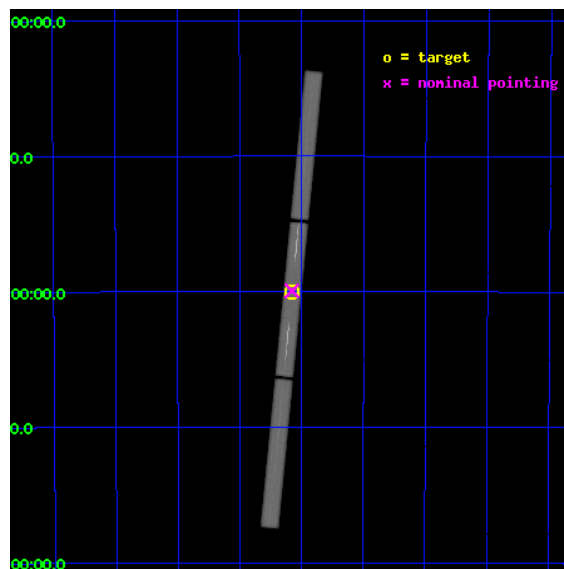
L2 Processing Date : Nov 13 2012

Contents

1	Front	2
2	OBI	3
2.1	OBI	3
2.1.1	Images	3
2.1.2	Parameters	4
2.1.3	Events	4
2.2	Compared Parameters	5
2.3	Aspect	6
2.4	Star Slots	9
2.4.1	Slot 3	9
2.4.2	Slot 4	10
2.4.3	Slot 5	11
2.4.4	Slot 6	12
2.4.5	Slot 7	13
2.5	FID Slots	14
2.5.1	Slot 0	14
2.5.2	Slot 1	15
2.5.3	Slot 2	16
3	Gratings	17
3.1	LETG Arm	17
A	Summary	19
A.1	Status	19
A.2	Comments	19

1 Front

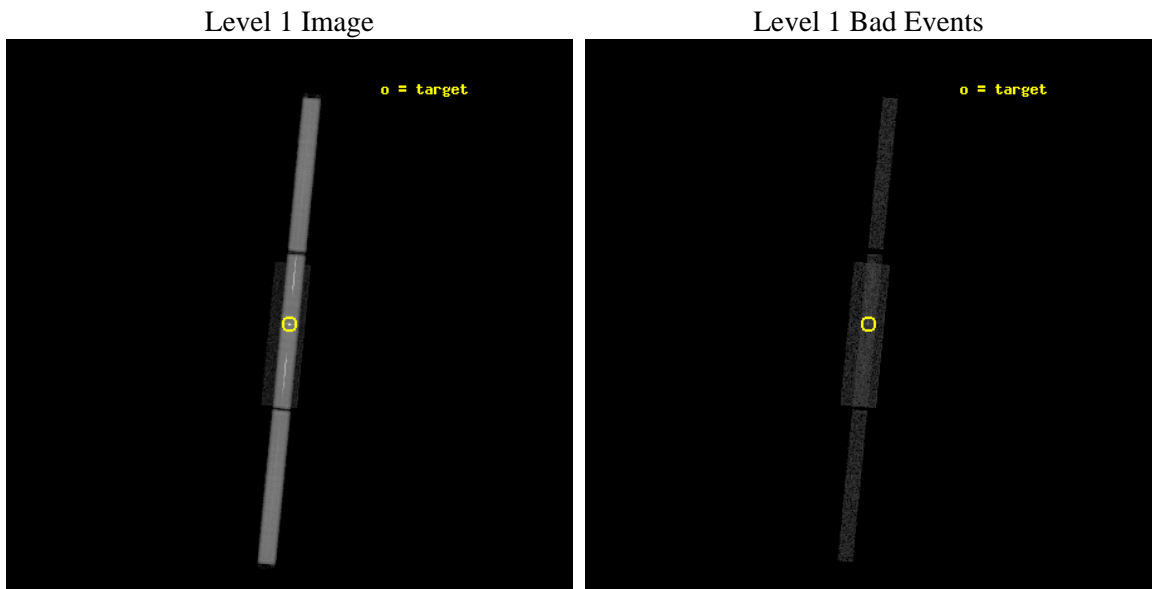
seq_num	300144	Sequence number
obs_id	5292	Observation id
title	A HRC-S LETG Observation of V4743 Sgr	Proposal title
observer	Regents' Professor Sumner Starrfield	Principal investigator
object	V4743 Sgr	Source name
ra_targ	285.289167	Observer's specified target RA [deg]
dec_targ	-22.001639	Observer's specified target Dec [deg]
ra_nom	285.28893177425	Nominal RA [deg]
dec_nom	-21.996891351338	Nominal Dec [deg]
roll_nom	95.558591680199	Nominal Roll [deg]
revision	5	Processing version of data
ontime	10308.425451458	[s]
liveltime	10236.361092964	Ontime multiplied by DTCOR
l2events	627589	Number of level 2 events



2 OBI

2.1 OBI

2.1.1 Images



2.1.2 Parameters

obi_num	0	Obi number	sched_exp_time	10193.682000	[s] Scheduled observation exposure time
ascdsver	8.4.5	Processing system revision	ontime	10308.425451458	[s]
caldsver	4.5.2	 	l1events	931277	Number of level 1 events
date	2012-11-13T20:17:08	Date and time of file creation			
revision	5	Processing version of data			

2.1.3 Events

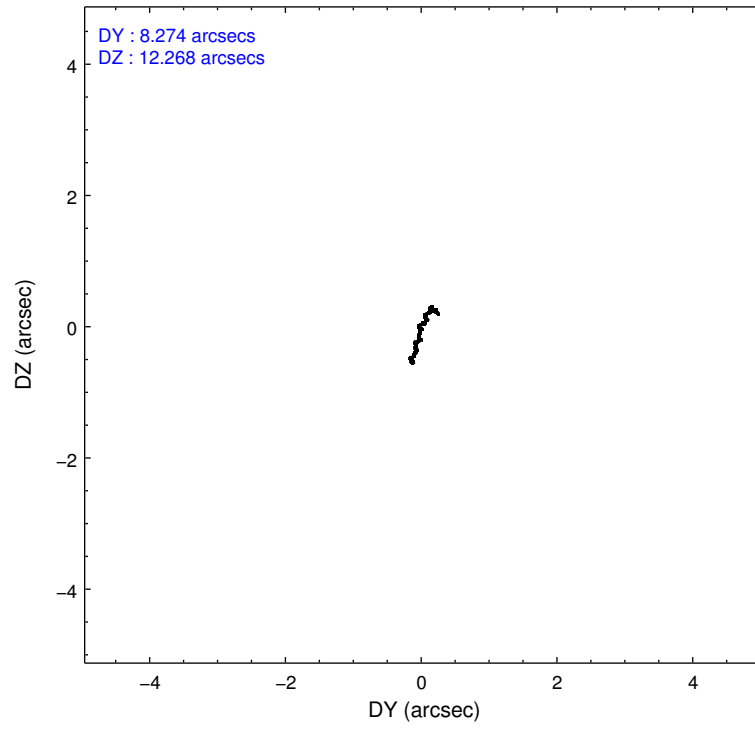
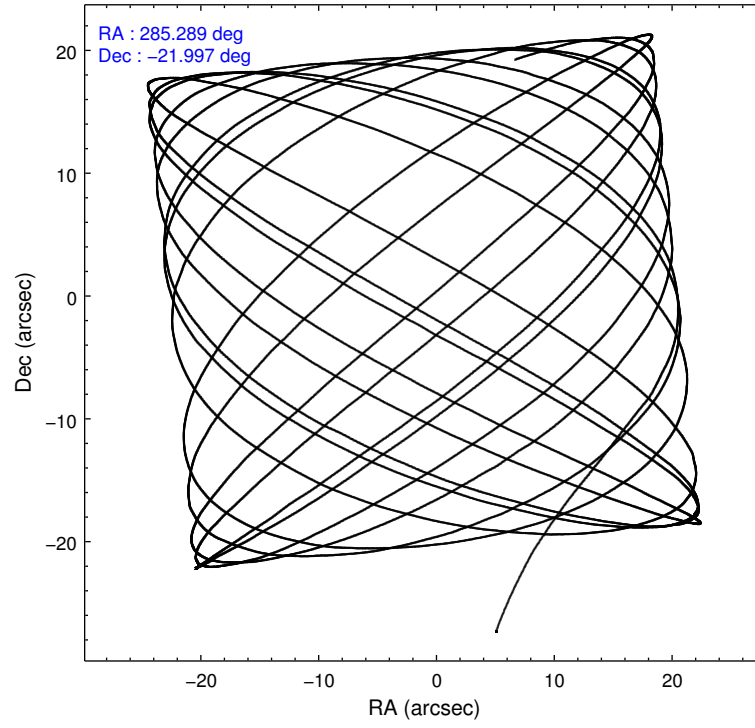
Level 1 Events

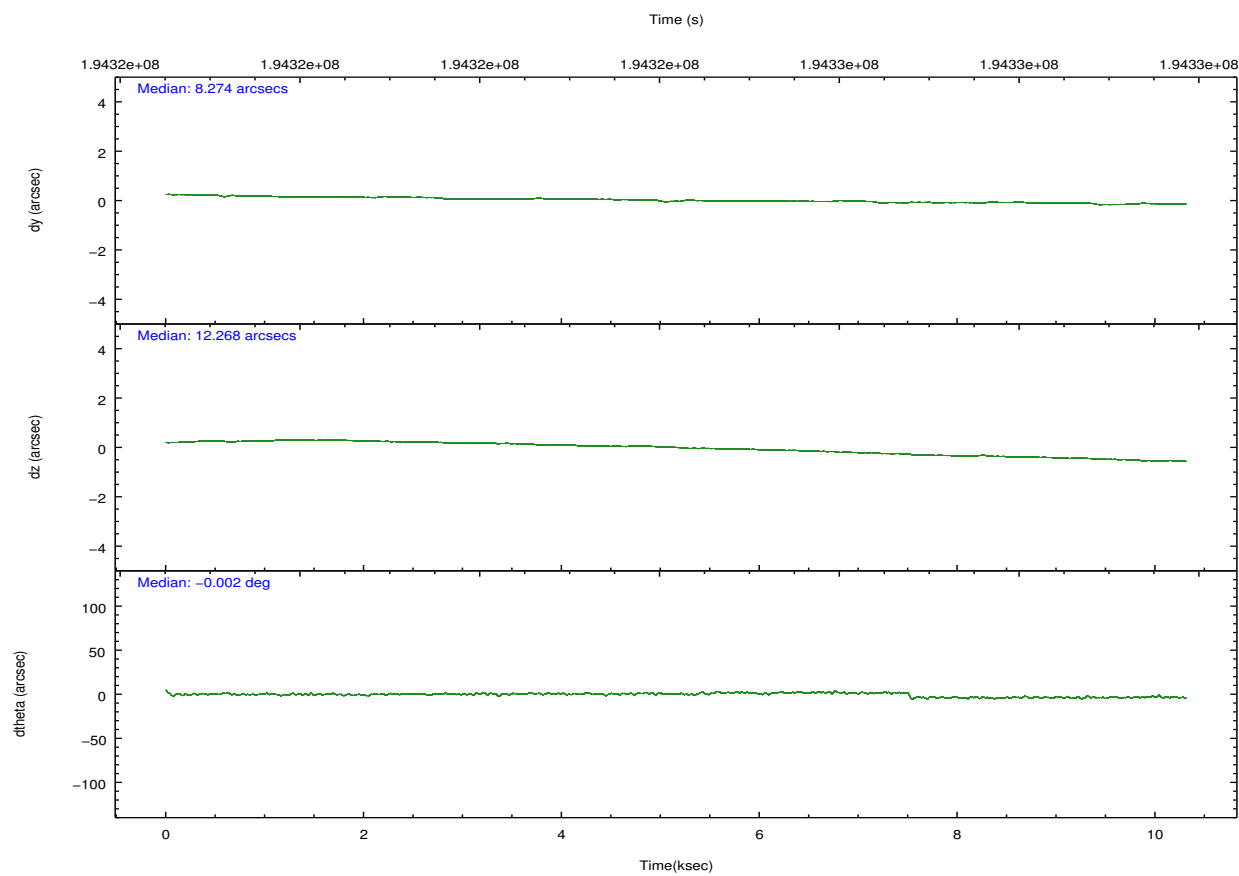
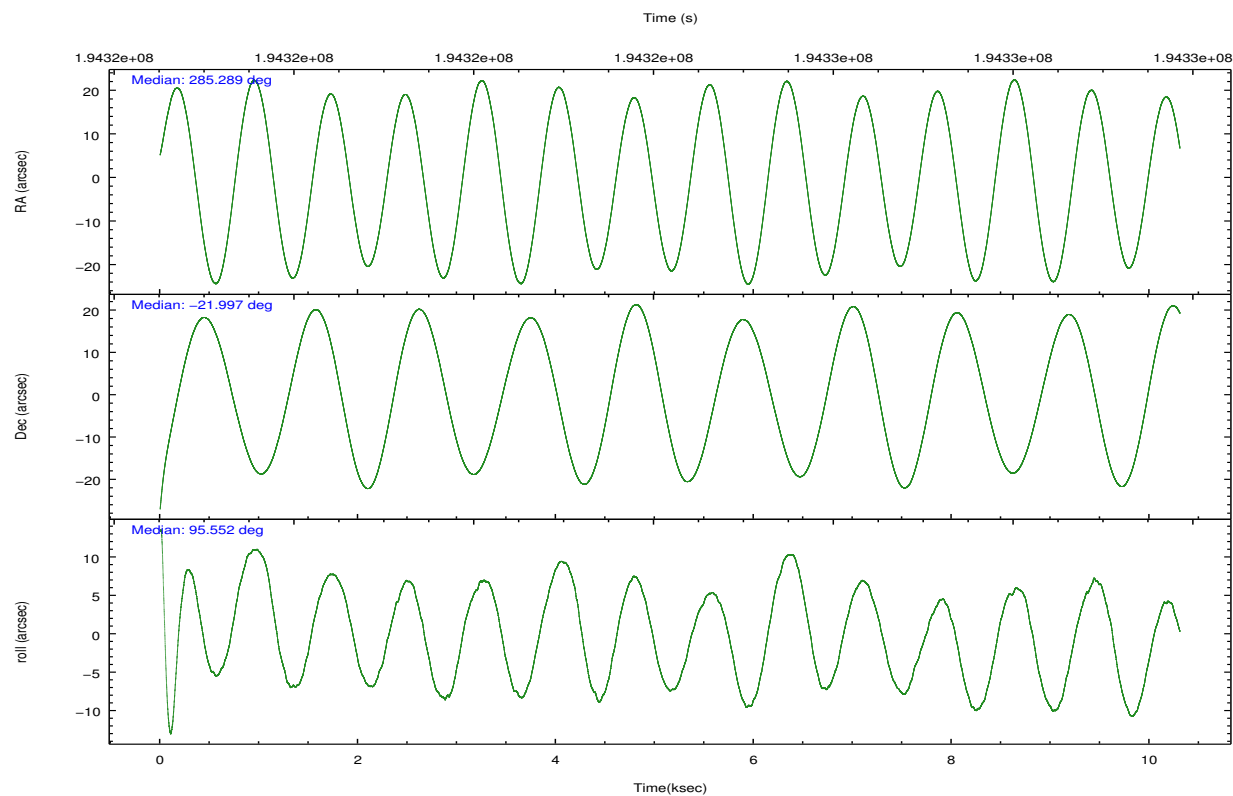
	segment 1	segment 2	segment 3
level 1 events	276322	379031	275924
rejected events	32345	47995	32447
rejected %	11%	12%	11%

2.2 Compared Parameters

Parameter	Planned	Actual	Parameter	Planned	Actual
Instrument	HRC	HRC	Obspar format version number	7	7
Detector	HRC-S	HRC-S	Obspar file type	PREDICTED	ACTUAL
Grating	LETG	LETG	Obspar update status	NONE	UPDATED
Data mode	OBSERVING	OBSERVING			
Observation mode	POINTING	POINTING			
[deg] Pointing RA	285.307985	285.2889317742473			
[deg] Pointing Dec	-22.019383	-21.99689135133824			
[deg] Pointing Roll	95.498364	95.55859168019882			
[mm] SIM focus pos	-1.429586	-1.428180813131781			
[mm] SIM defocus	0.1037507710433287	0.1051558262725154			
[mm] SIM translation stage pos	250.455976	250.466033080201			
[mm] SIM translation stage offset	0	-0.01005468664627074			
[s] Observation start time (MET)	194319144.184000	194317662.36693			
Observation start date	2004-02-28T01:31:20	2004-02-28T01:07:42			
[s] Observation end time (MET)	194329338.184000	194331191.85502			
Observation end date	2004-02-28T04:21:14	2004-02-28T04:53:11			

2.3 Aspect



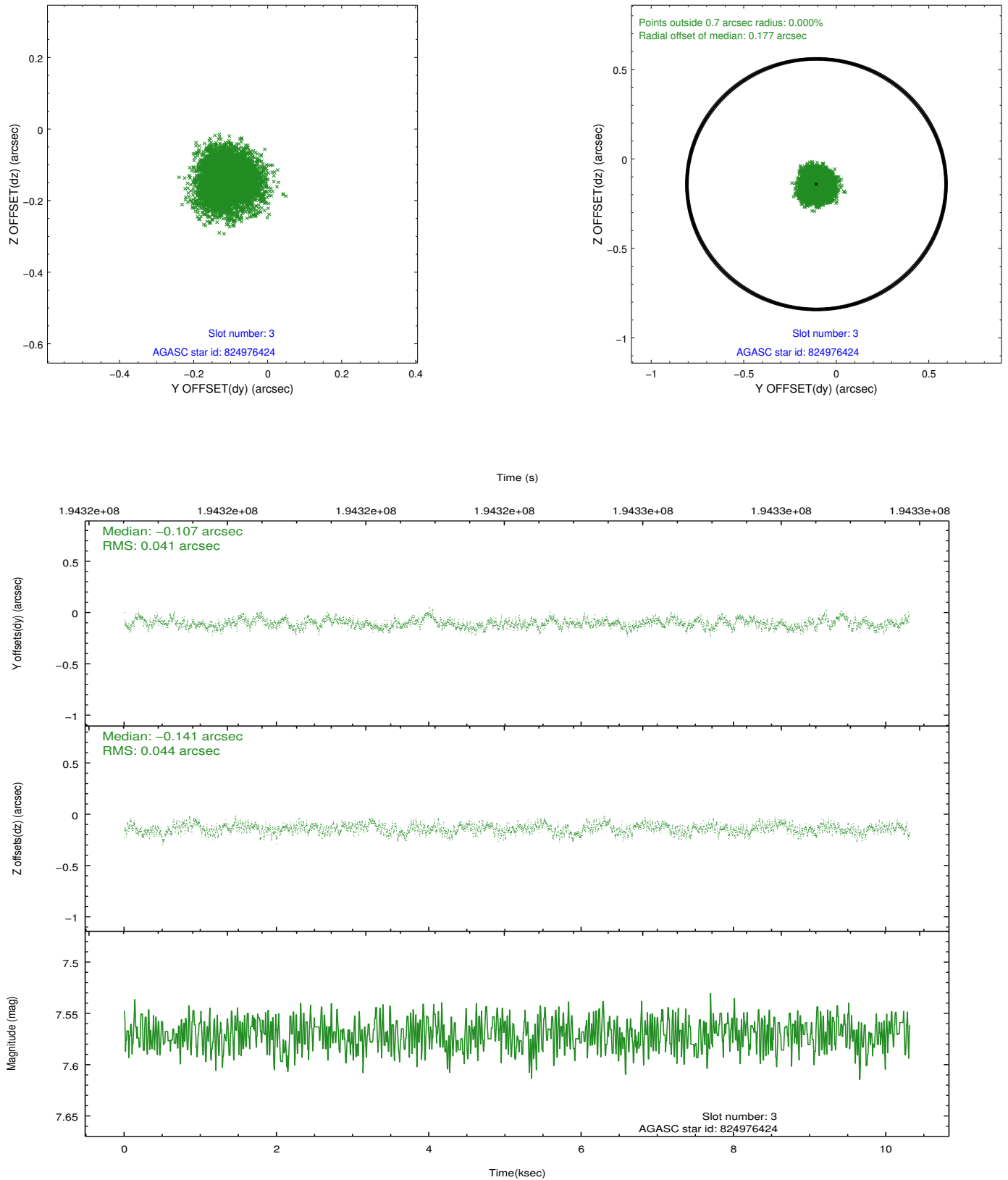


Slot Statistics

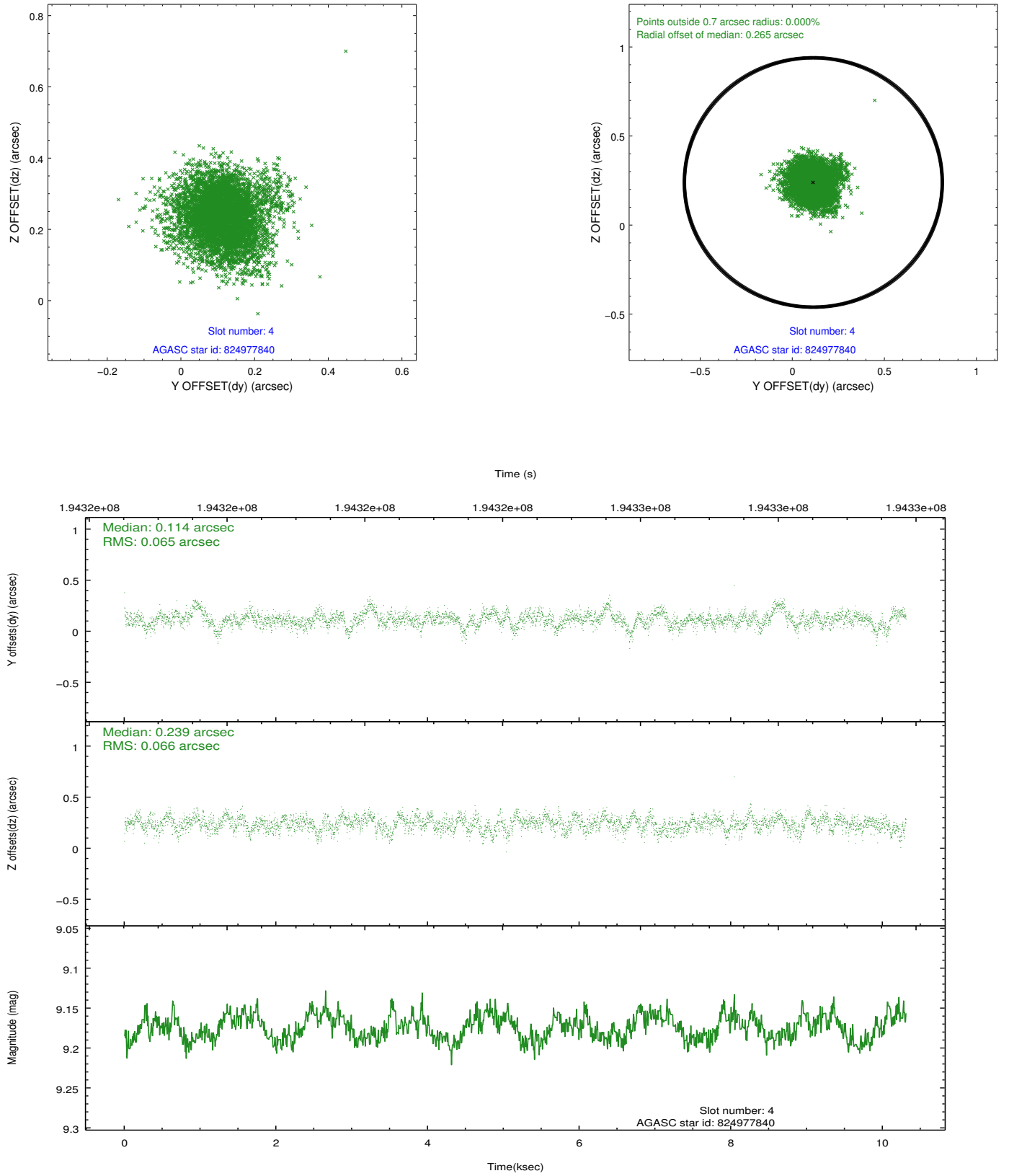
slot	status	id	mag	n_pts	med_dy	med_dz	dr1	dr2	ra	dec	mean_y	mean_z
0	FID	HRC-S-2	7.02	2515	0.092	-0.065	0.018	0.077	0.000000	0.000000	1237.17	-453.54
1	FID	HRC-S-3	7.04	2515	0.082	-0.117	0.012	0.021	0.000000	0.000000	-1164.74	568.44
2	FID	HRC-S-4	7.01	2514	0.234	-0.113	0.018	0.078	0.000000	0.000000	1235.43	571.40
3	GUIDE	824976424	7.57	5030	-0.107	-0.141	0.065	0.104	284.900091	-21.828249	813.42	1291.56
4	GUIDE	824977840	9.17	5028	0.114	0.239	0.097	0.164	285.448876	-22.329632	-1156.69	-359.12
5	GUIDE	824979304	8.98	5029	0.136	0.182	0.090	0.147	285.497931	-22.093264	-325.95	-604.59
6	GUIDE	824979864	9.40	5028	-0.116	-0.245	0.133	0.222	284.670947	-21.972498	366.91	2101.39
7	GUIDE	824984488	9.62	2510	-0.053	-0.059	0.131	0.213	284.803811	-21.903683	573.07	1637.93

2.4 Star Slots

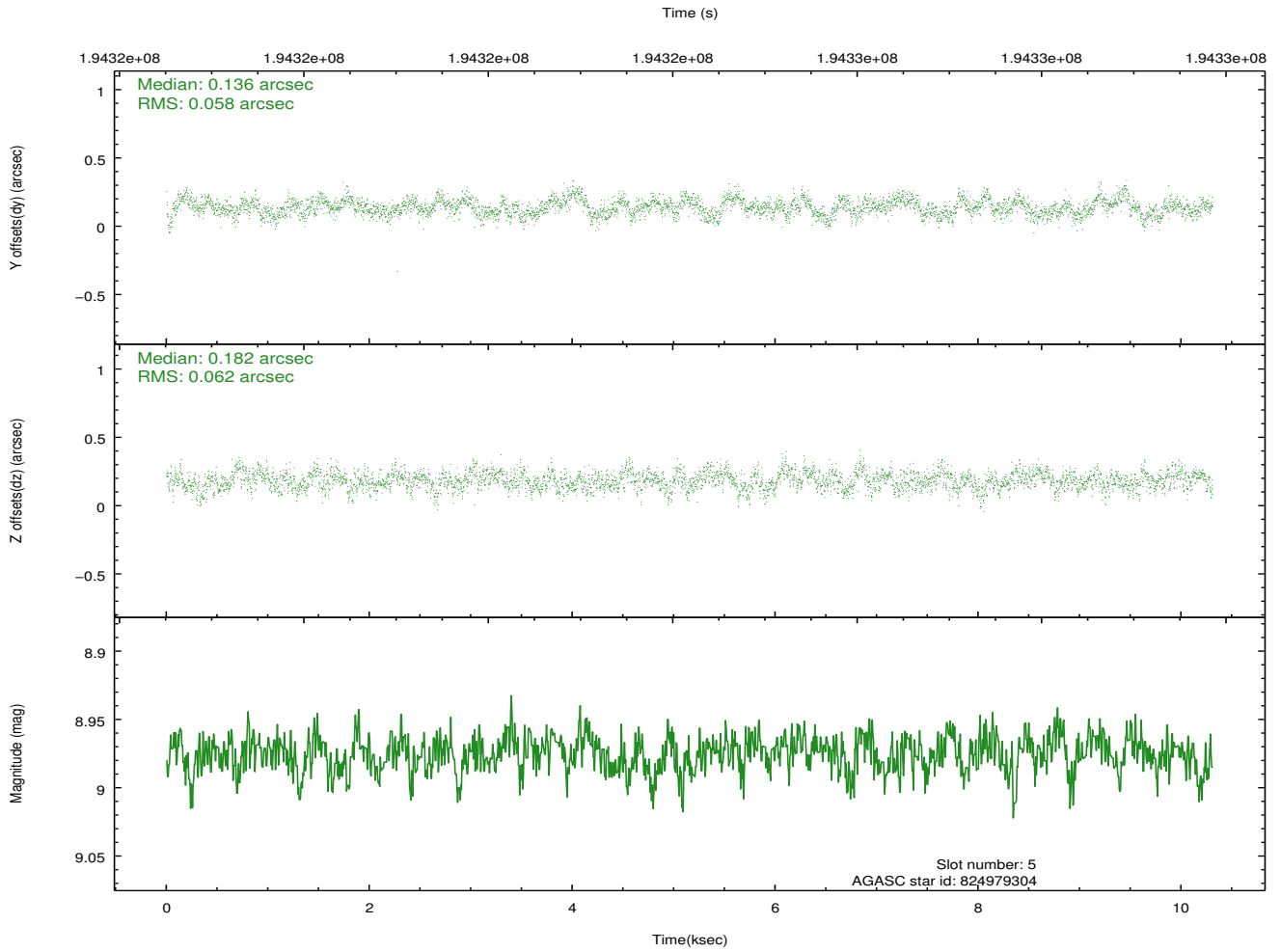
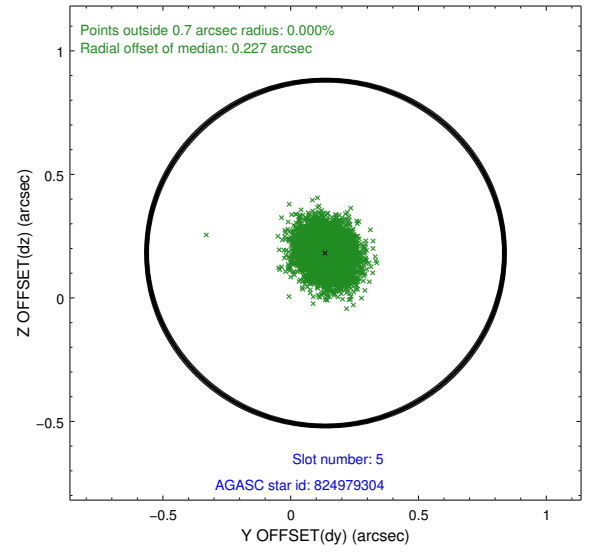
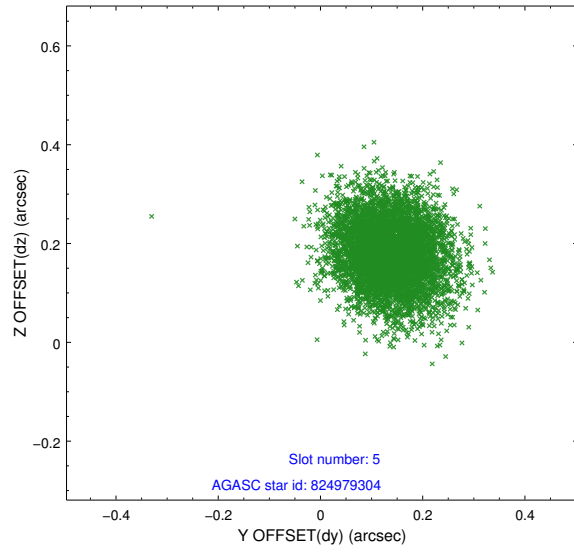
2.4.1 Slot 3



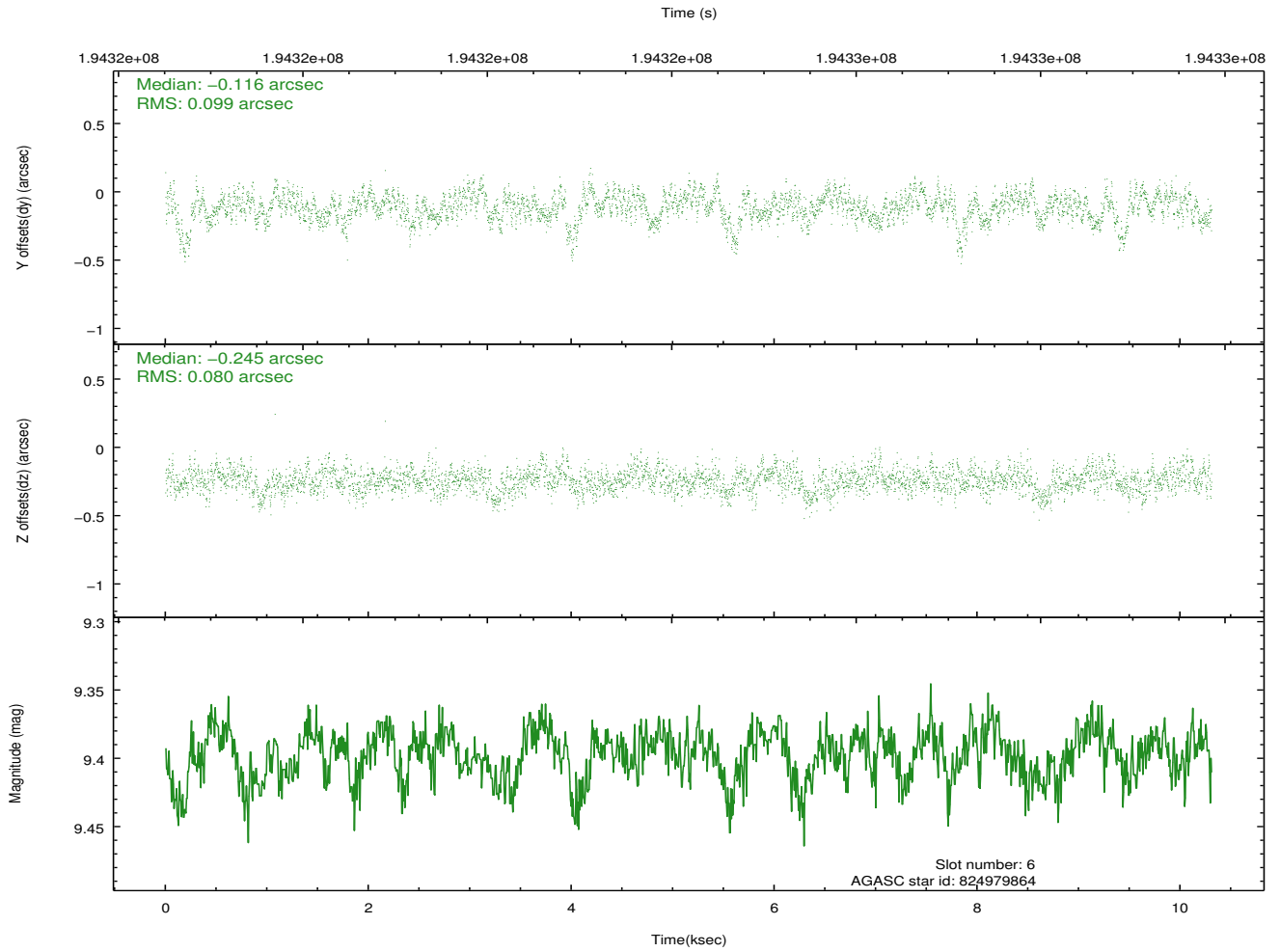
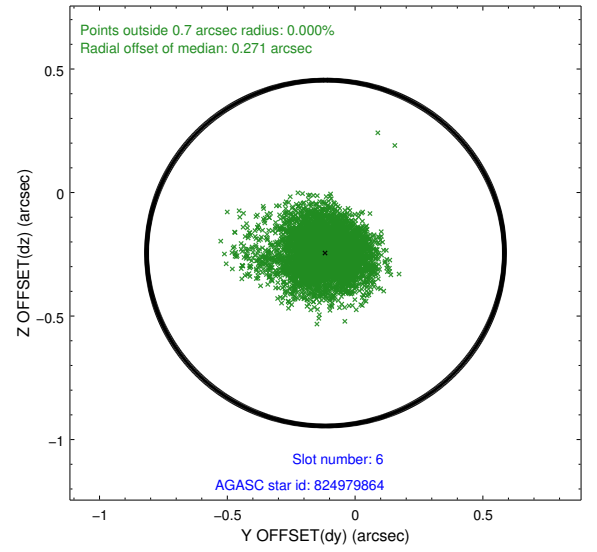
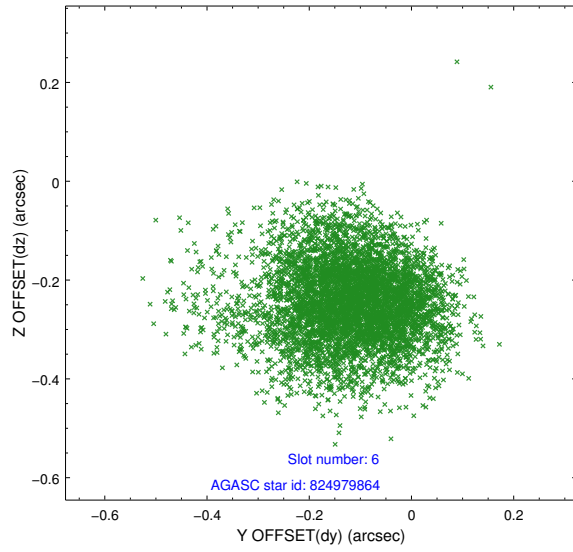
2.4.2 Slot 4



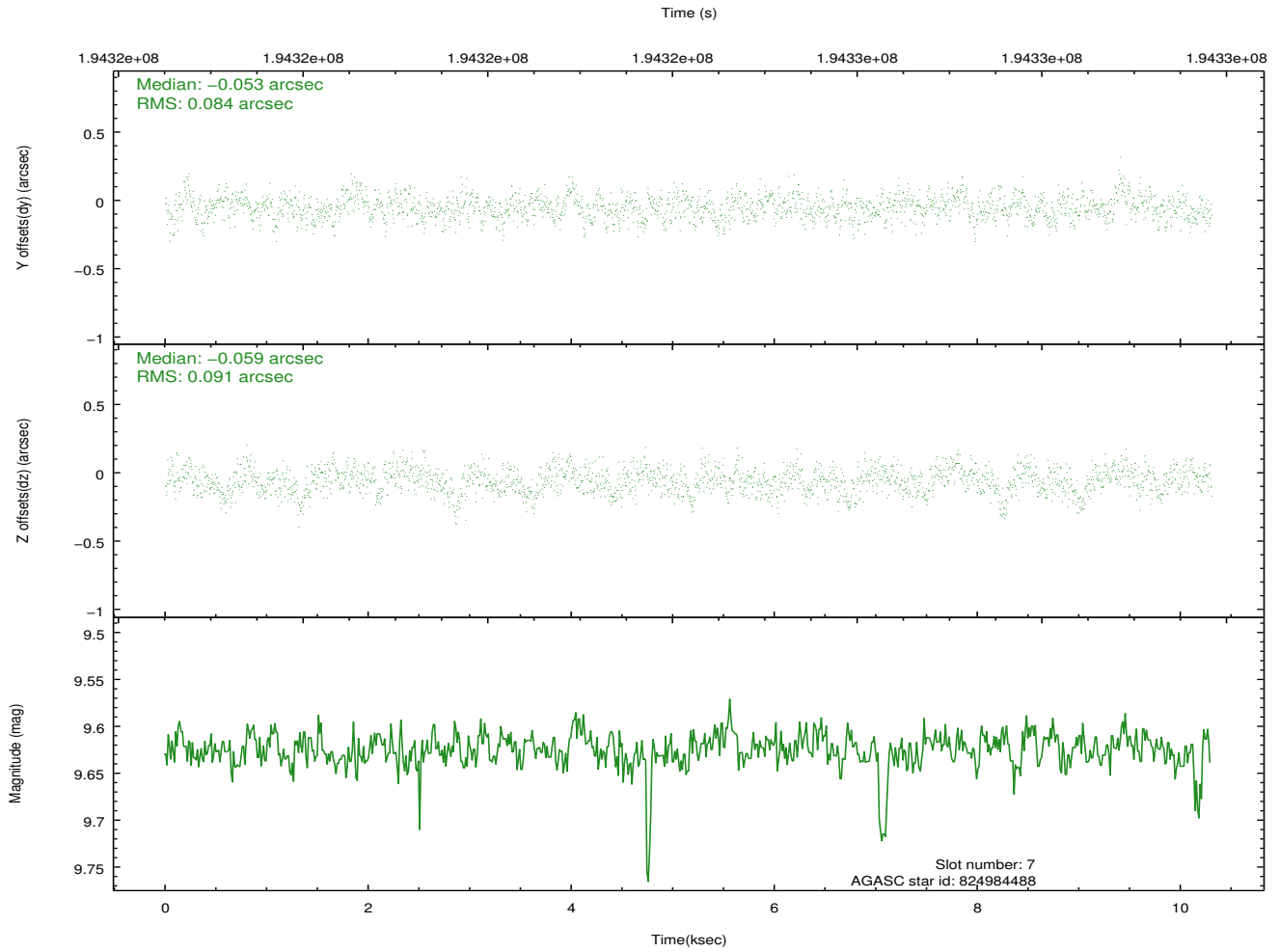
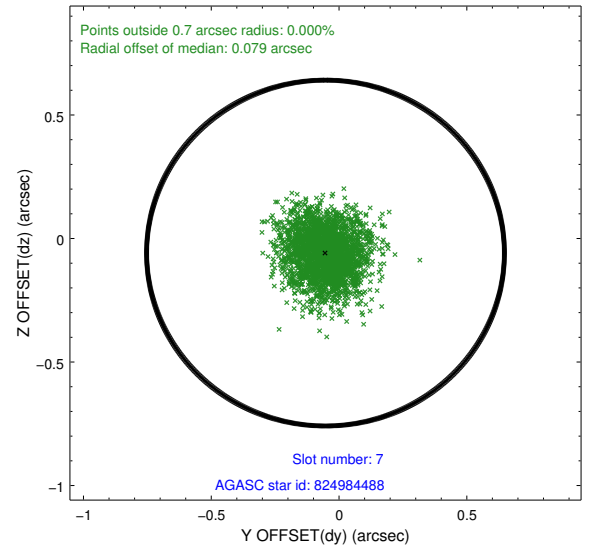
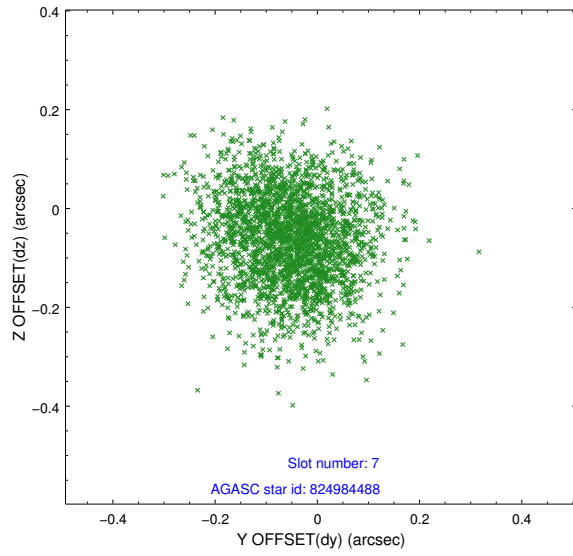
2.4.3 Slot 5



2.4.4 Slot 6

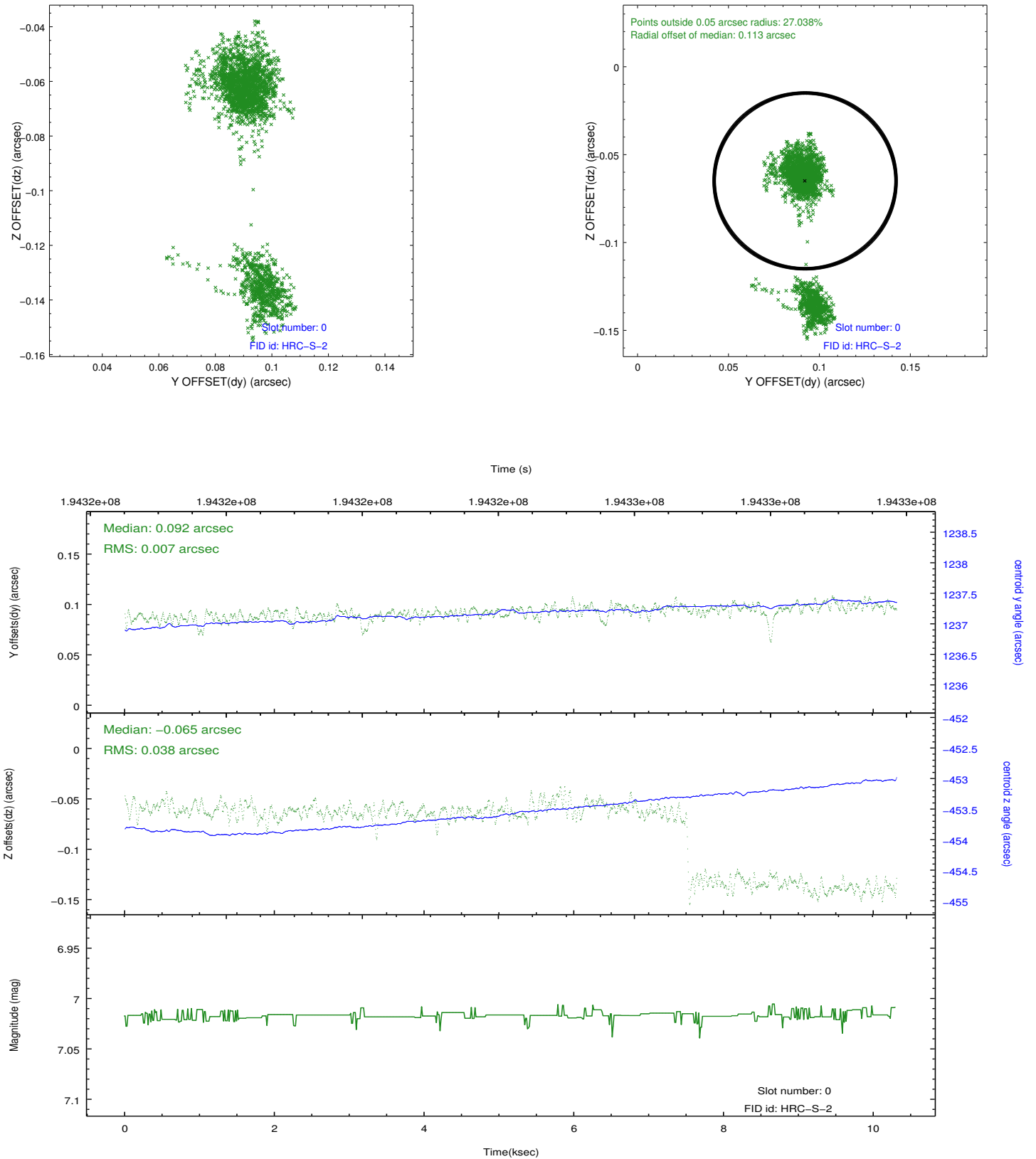


2.4.5 Slot 7

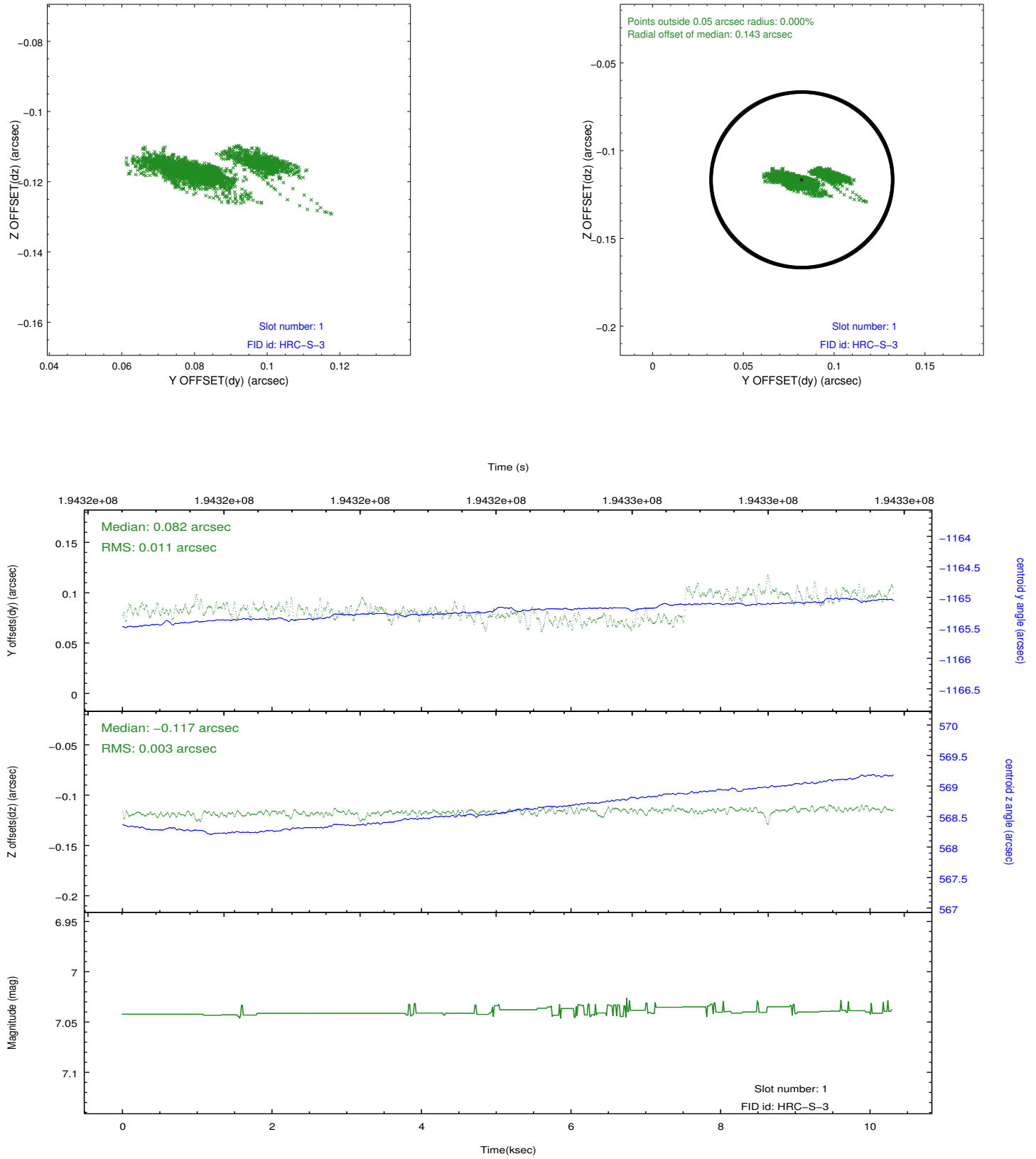


2.5 FID Slots

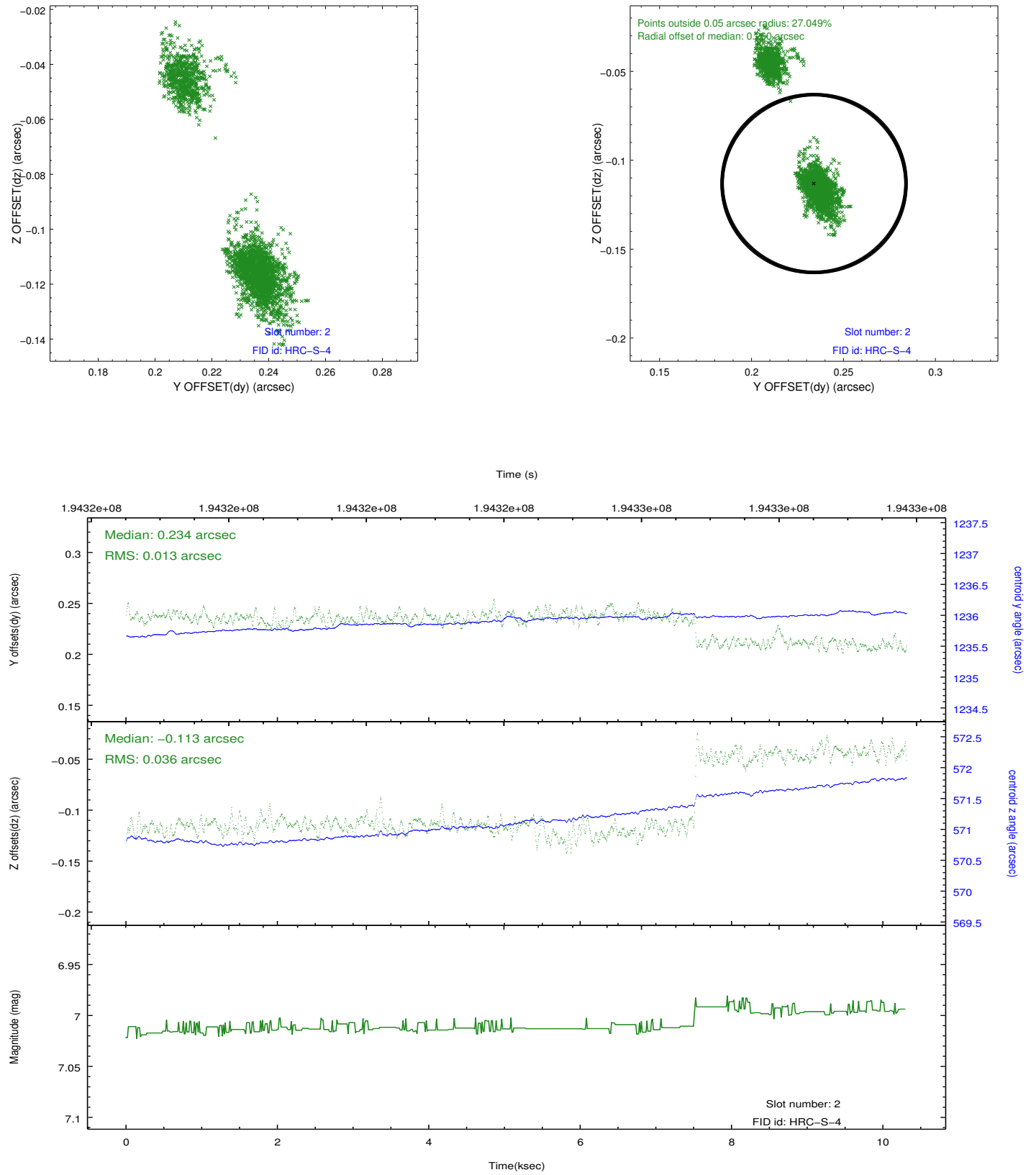
2.5.1 Slot 0



2.5.2 Slot 1

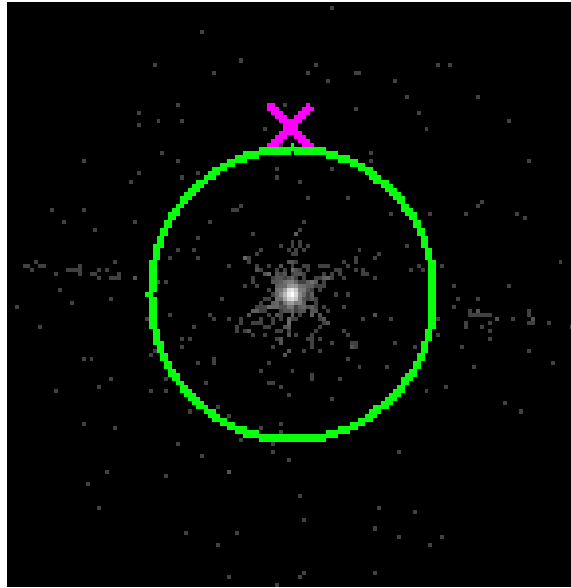


2.5.3 Slot 2

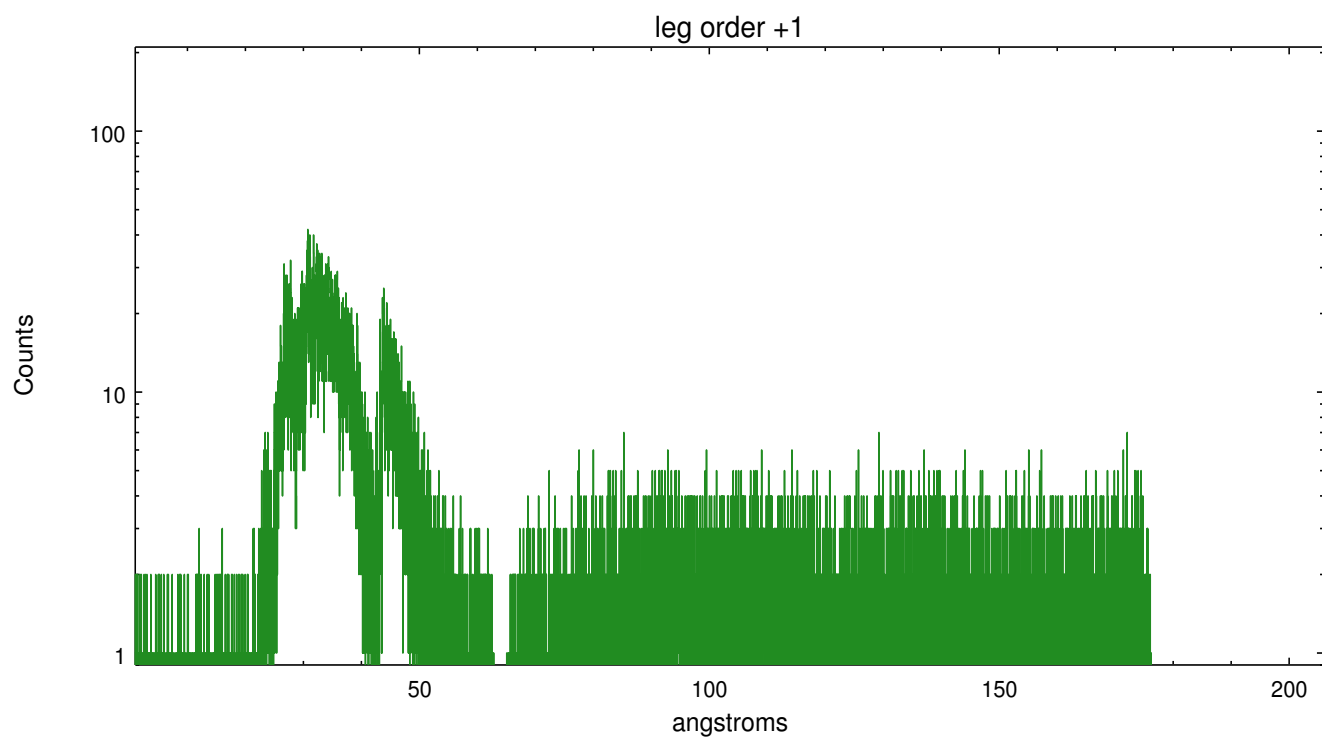
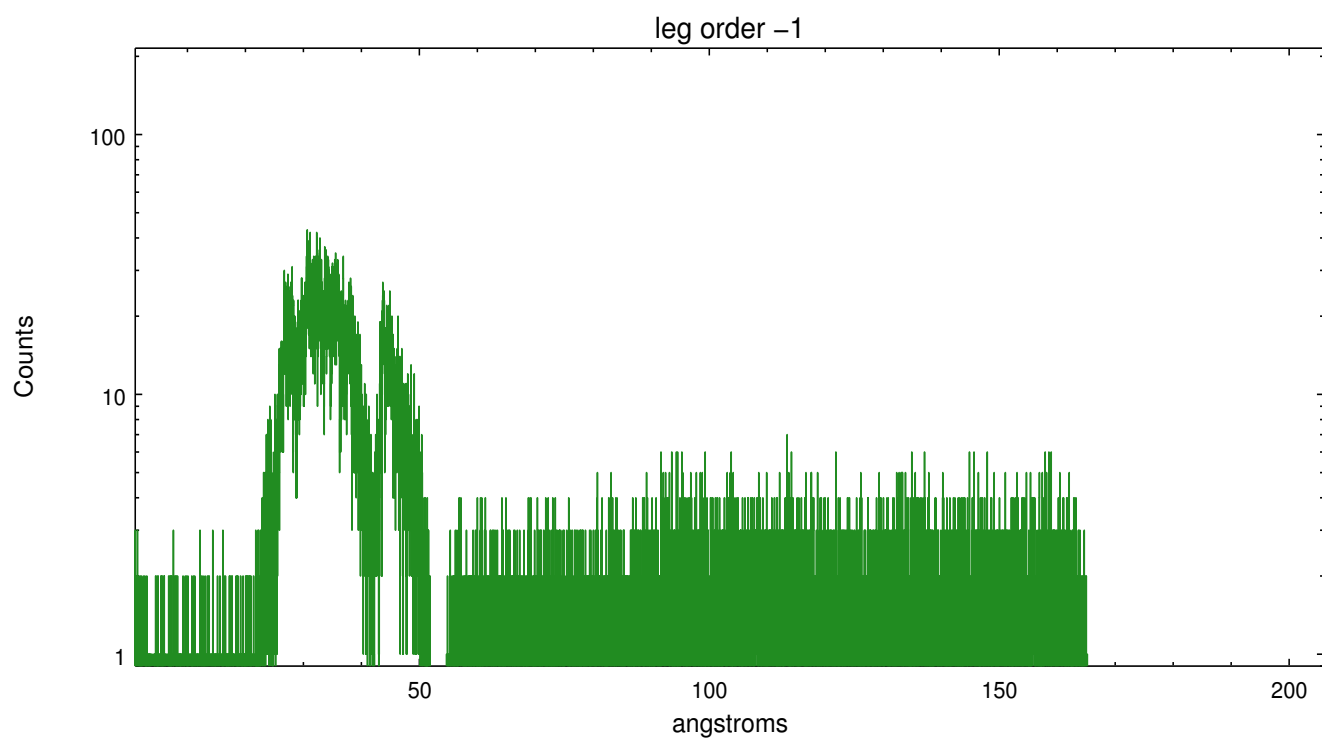


3 Gratings

3.1 LETG Arm



LETG Zero Order



A Summary

A.1 Status

V&V Scientist	Joy Nichols
V&V Date (YYYY-MM-DD)	2012.12.18
V&V Edition	1
V&V Disposition and Status	OK
V&V Charge Time	10.308

A.2 Comments