

V&V Reference Report

L2 ASCDS Version : 7.6.10

Observation 522 - L2 Version 001
Chandra X-Ray Center

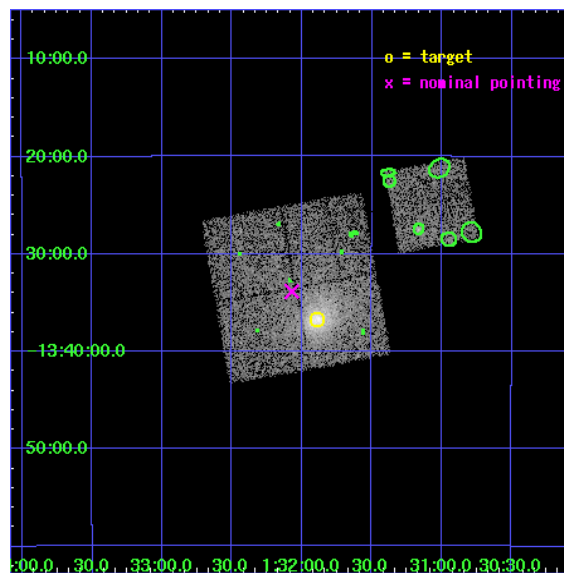
L2 Processing Date : Jun 6 2007

Contents

| | | |
|----------|-------------------------------|-----------|
| 1 | Front | 2 |
| 2 | OBI | 3 |
| 2.1 | OBI | 3 |
| 2.1.1 | Images | 3 |
| 2.1.2 | Bias | 3 |
| 2.1.3 | Parameters | 4 |
| 2.1.4 | Events | 4 |
| 2.2 | Compared Parameters | 5 |
| 2.3 | Aspect | 6 |
| 2.4 | Star Slots | 9 |
| 2.4.1 | Slot 3 | 9 |
| 2.4.2 | Slot 4 | 10 |
| 2.4.3 | Slot 5 | 11 |
| 2.4.4 | Slot 6 | 12 |
| 2.4.5 | Slot 7 | 13 |
| 2.5 | FID Slots | 14 |
| 2.5.1 | Slot 0 | 14 |
| 2.5.2 | Slot 1 | 15 |
| 2.5.3 | Slot 2 | 16 |
| 3 | Point Sources | 17 |
| A | Summary | 18 |
| A.1 | Status | 18 |
| A.2 | Comments | 18 |

1 Front

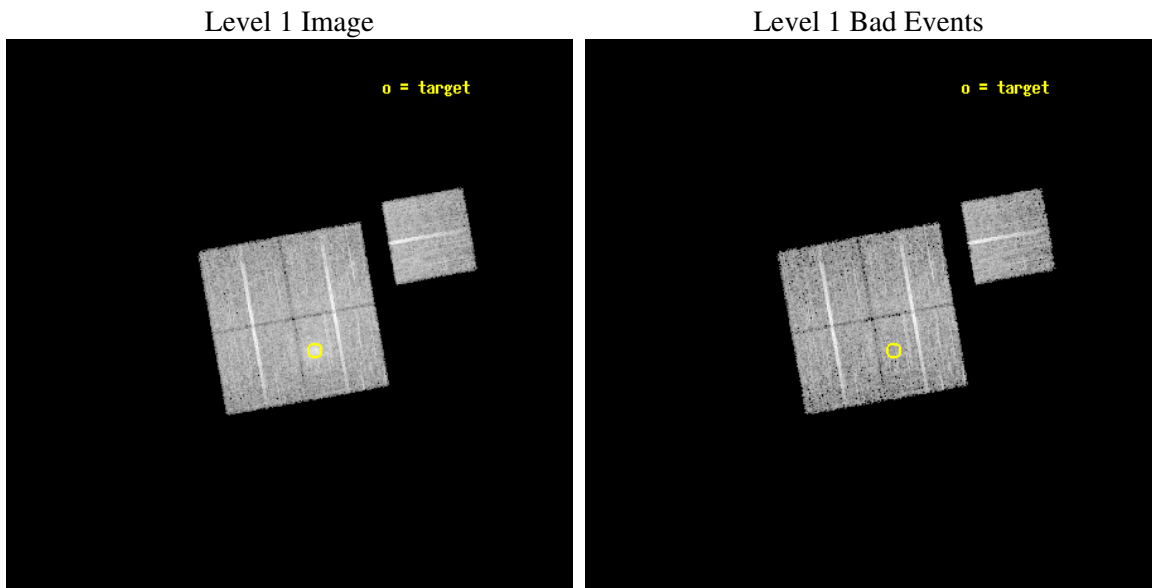
| | |
|----------|------------------------|
| seq_num | 800030 |
| obs_id | 522 |
| title | DETERMINATION OF H0/Q0 |
| observer | DR. LEON VANSPEYBROECK |
| object | A209 |
| dtcycle | 0 |
| cycle | P |
| ra_targ | 22.972117 |
| dec_targ | -13.611458 |
| ra_nom | 23.0178729459 |
| dec_nom | -13.564236983756 |
| roll_nom | 79.771714739322 |
| revision | 2 |
| ontime | 10089.600009397 |
| livetime | 9961.8394188499 |
| ontime0 | 10089.600009397 |
| ontime1 | 10089.600009397 |
| ontime2 | 10089.600009397 |
| ontime3 | 10089.600009397 |
| ontime6 | 10089.600009397 |
| l2events | 39196 |



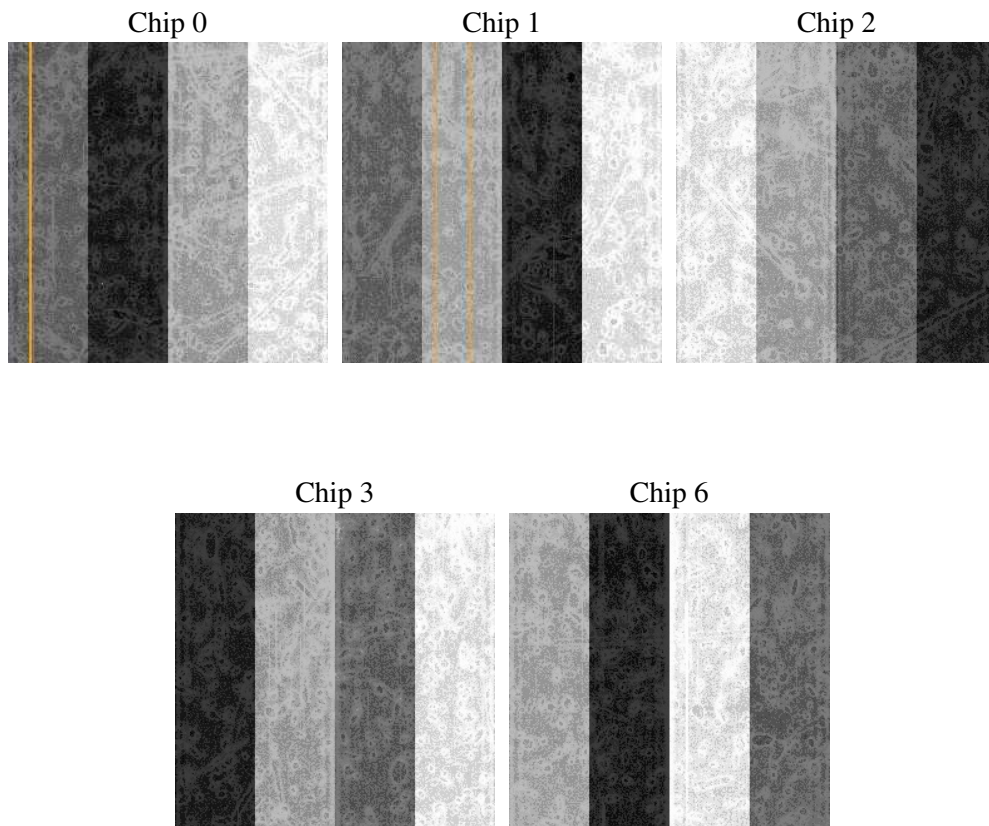
2 OBI

2.1 OBI

2.1.1 Images



2.1.2 Bias



2.1.3 Parameters

| | |
|----------|---------------------|
| obi_num | 0 |
| ascdsver | 7.6.10 |
| caldsver | 3.4.0 |
| date | 2007-06-06T21:19:58 |
| revision | 2 |

| | |
|----------------|-----------------|
| sched_exp_time | 10000.000000 |
| ontime | 10089.600009397 |
| ontime0 | 10089.600009397 |
| ontime1 | 10089.600009397 |
| ontime2 | 10089.600009397 |
| ontime3 | 10089.600009397 |
| ontime6 | 10089.600009397 |
| l1events | 296890 |

2.1.4 Events

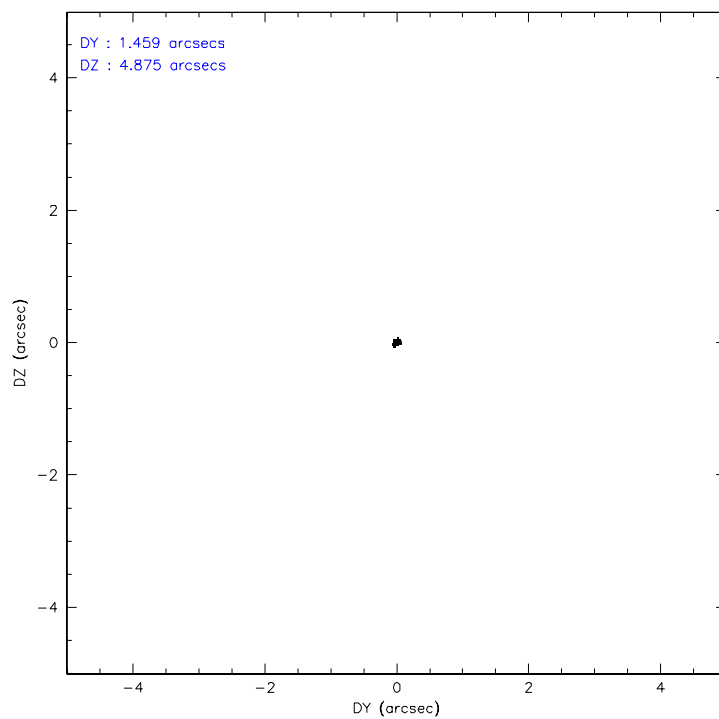
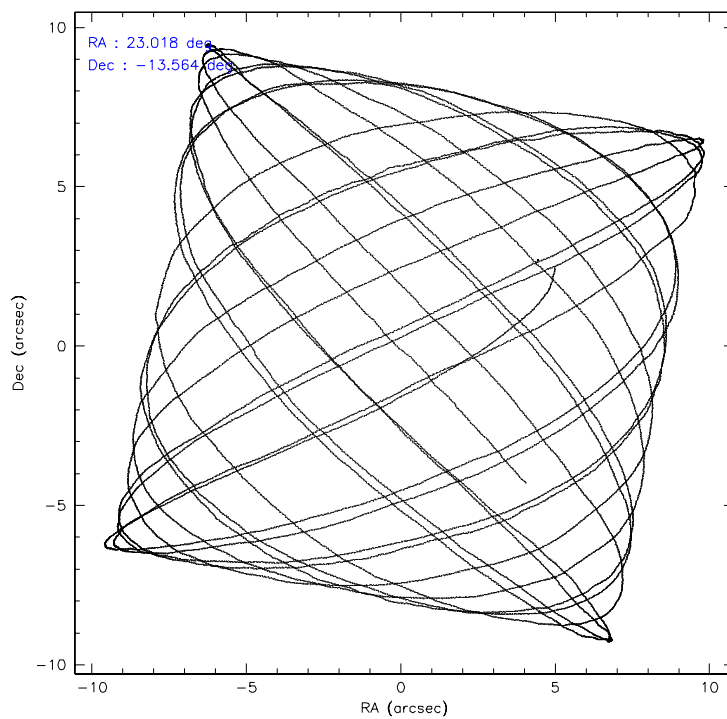
| | ccd 0 | ccd 1 | ccd 2 | ccd 3 | ccd 6 |
|-----------------|-------|-------|-------|-------|-------|
| level 1 events | 54569 | 56071 | 59619 | 68005 | 58626 |
| rejected events | 47670 | 47898 | 52698 | 52231 | 52150 |
| rejected % | 87% | 85% | 88% | 76% | 88% |

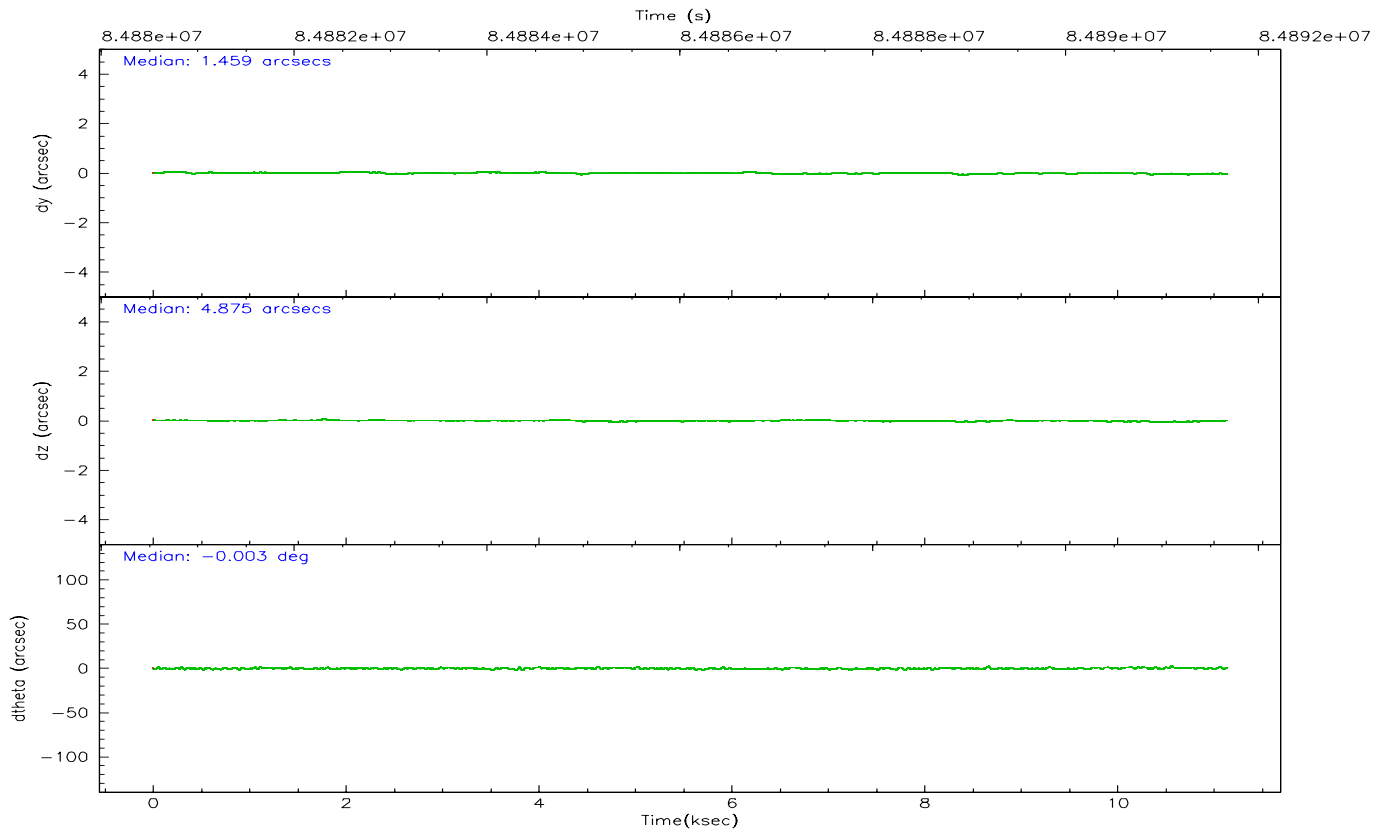
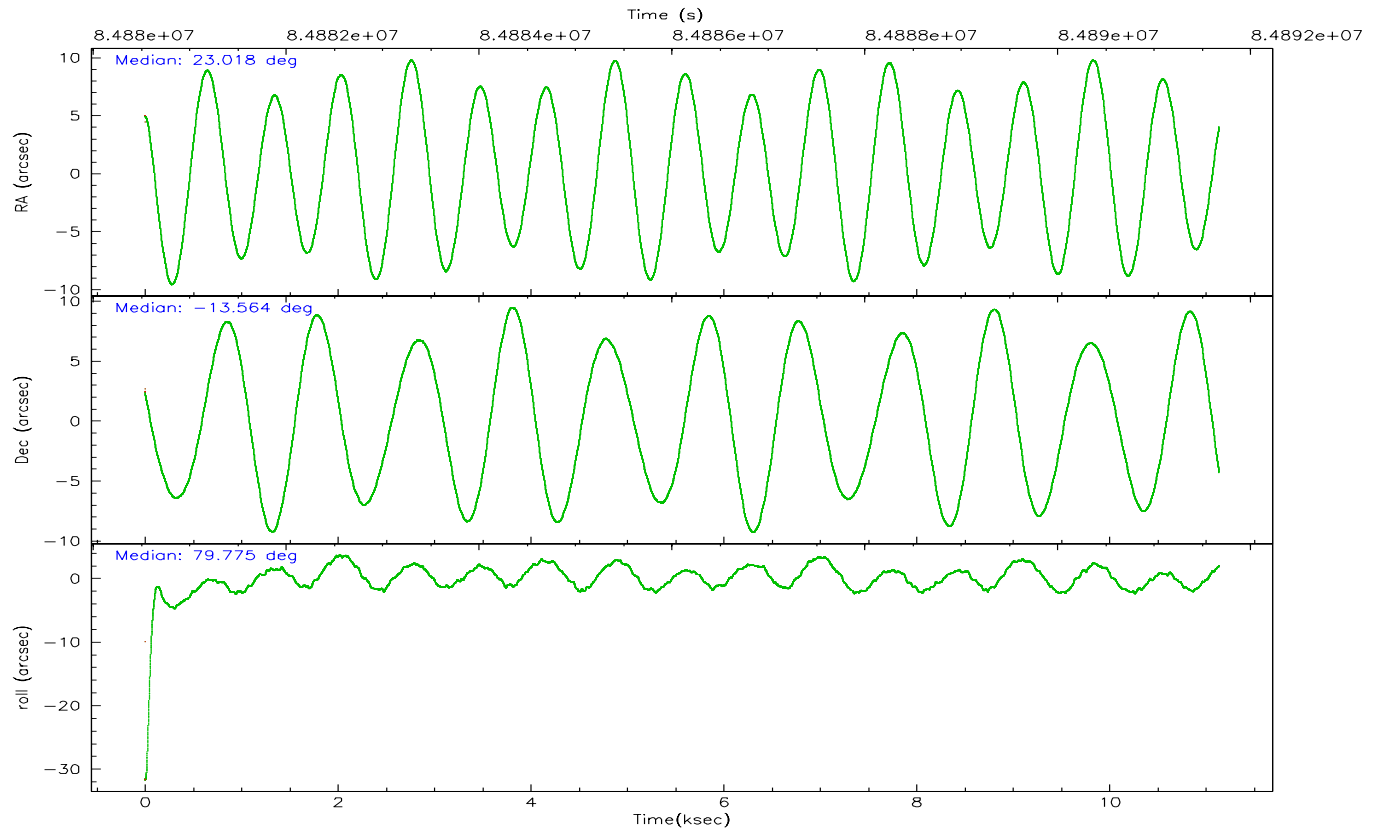
| | ccd 0 | ccd 1 | ccd 2 | ccd 3 | ccd 6 |
|----------------|-------|-------|-------|-------|-------|
| grade 0 events | 2992 | 3938 | 3057 | 10383 | 2728 |
| | 5% | 7% | 5% | 15% | 4% |
| grade 1 events | 25 | 30 | 25 | 43 | 23 |
| | 0% | 0% | 0% | 0% | 0% |
| grade 2 events | 1390 | 1476 | 1453 | 2204 | 1308 |
| | 2% | 2% | 2% | 3% | 2% |
| grade 3 events | 671 | 737 | 644 | 886 | 583 |
| | 1% | 1% | 1% | 1% | 0% |
| grade 4 events | 640 | 684 | 611 | 914 | 645 |
| | 1% | 1% | 1% | 1% | 1% |
| grade 5 events | 2085 | 2171 | 1965 | 2239 | 2261 |
| | 3% | 3% | 3% | 3% | 3% |
| grade 6 events | 1210 | 1342 | 1160 | 1399 | 1217 |
| | 2% | 2% | 1% | 2% | 2% |
| grade 7 events | 45556 | 45693 | 50704 | 49937 | 49861 |
| | 83% | 81% | 85% | 73% | 85% |

2.2 Compared Parameters

| Parameter | Planned | Actual | Parameter | Planned | Actual |
|-----------------------------------|---------------------|----------------------|---------------------------------------|-----------|---------|
| Instrument | ACIS | ACIS | Obspar format version number | 6 | 6 |
| Detector | ACIS-01236 | ACIS-01236 | Obspar file type | PREDICTED | ACTUAL |
| Grating | NONE | NONE | Obspar update status | NONE | UPDATED |
| Data mode | VFAINT | VFAINT | Number of optional ACIS chips dropped | 0 | 0 |
| Observation mode | POINTING | POINTING | On-chip summing requested | N | N |
| Pointing RA | 23.027416 | 23.01787294590022 | Subarray requested | NONE | NONE |
| Pointing Dec | -13.590181 | -13.56423698375625 | Alternating exposures requested | N | N |
| Pointing Roll | 79.565304 | 79.77171473932199 | Primary exposure time | 3.200000 | 3.2 |
| SIM focus pos (mm) | -0.782348 | -0.7809083437167272 | | | |
| SIM defocus (mm) | 0 | 0.001439871863259334 | | | |
| SIM translation stage pos (mm) | -236.532463 | -236.5241547330508 | | | |
| SIM translation stage offset (mm) | 2.94 | 2.931701730121091 | | | |
| Observation start time | 84881672.184000 | 84880241.116384 | | | |
| Observation start date | 2000-09-09T10:13:28 | 2000-09-09T09:50:41 | | | |
| Observation end time | 84891672.184000 | 84892760.97935501 | | | |
| Observation end date | 2000-09-09T13:00:08 | 2000-09-09T13:19:20 | | | |
| Read mode | TIMED | TIMED | | | |

2.3 Aspect



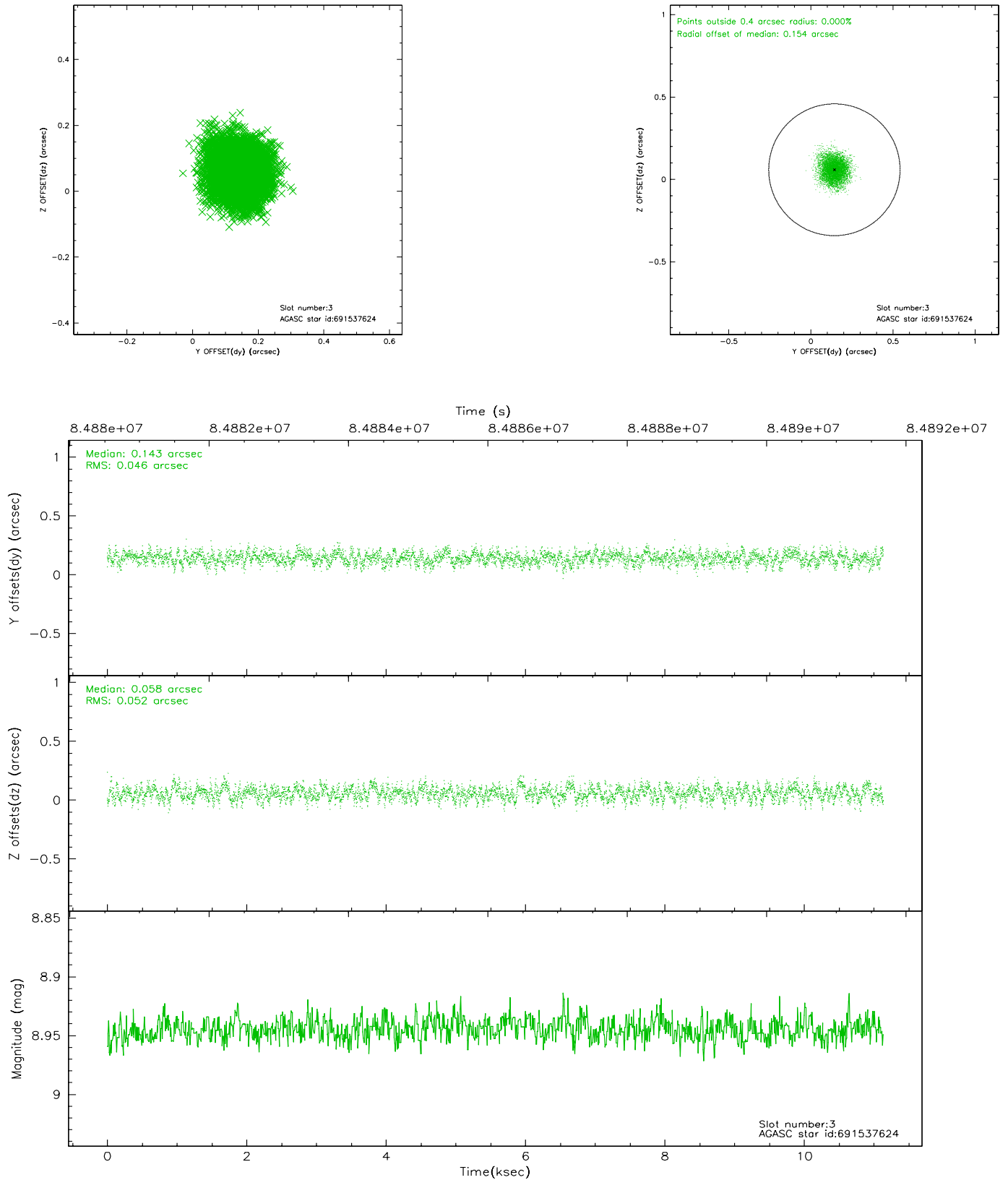


Slot Statistics

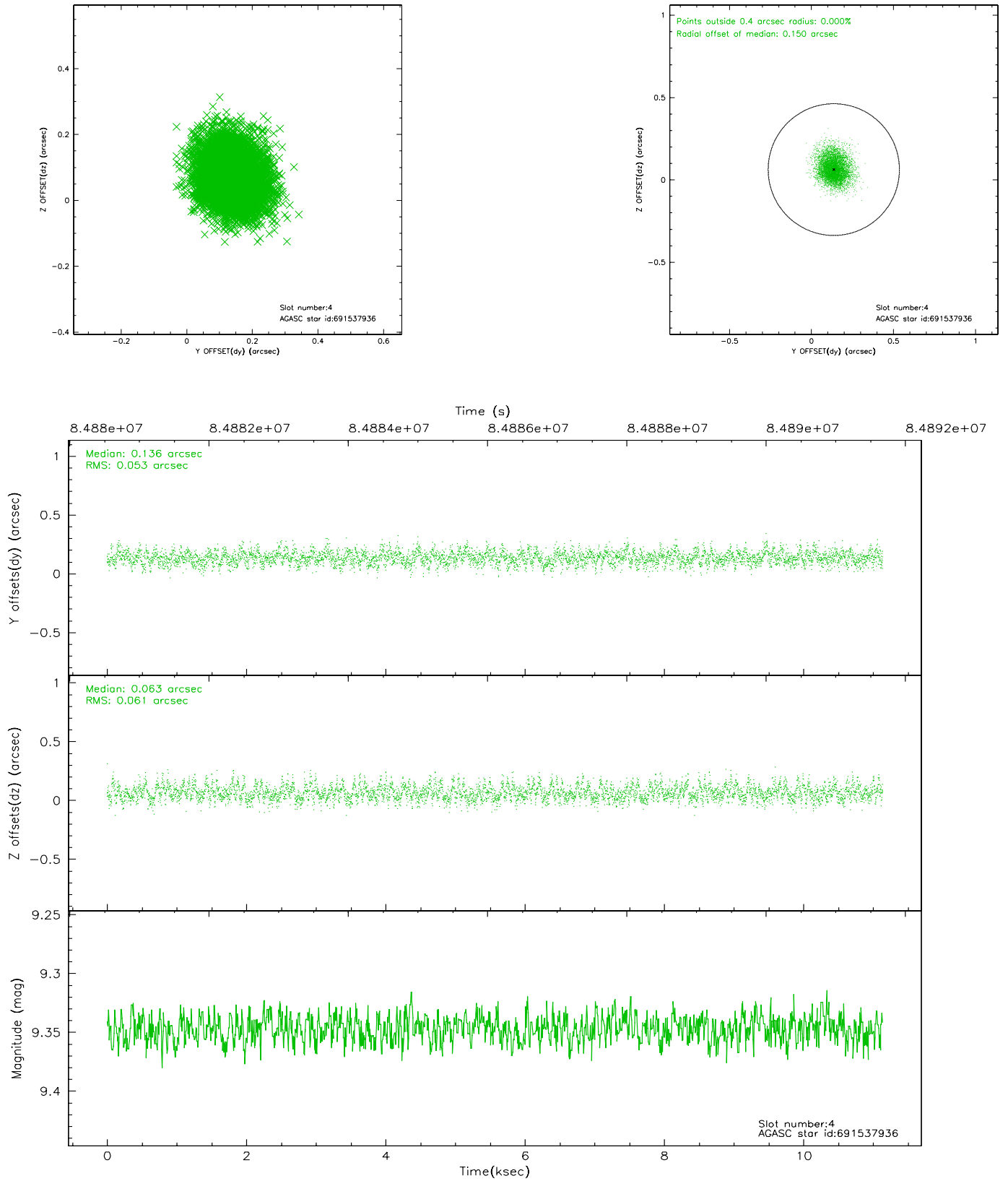
| slot | status | id | mag | n_pts | med_dy | med_dz | dr1 | dr2 | ra | dec | mean_y | mean_z |
|------|--------|-----------|------|-------|--------|--------|-------|-------|-----------|------------|----------|---------|
| 0 | FID | ACIS-I-2 | 7.14 | 2716 | -0.016 | 0.031 | 0.006 | 0.010 | 0.000000 | 0.000000 | -755.59 | -774.62 |
| 1 | FID | ACIS-I-4 | 7.21 | 2715 | -0.043 | 0.005 | 0.007 | 0.012 | 0.000000 | 0.000000 | 2158.22 | 1131.37 |
| 2 | FID | ACIS-I-6 | 7.26 | 2716 | -0.040 | 0.028 | 0.009 | 0.015 | 0.000000 | 0.000000 | 404.88 | 1774.45 |
| 3 | GUIDE | 691537624 | 8.94 | 5432 | 0.143 | 0.058 | 0.074 | 0.117 | 22.627219 | -14.073325 | -1964.82 | 1059.46 |
| 4 | GUIDE | 691537936 | 9.35 | 5433 | 0.136 | 0.063 | 0.086 | 0.141 | 22.686545 | -14.169763 | -2268.74 | 792.64 |
| 5 | GUIDE | 691537408 | 8.94 | 5431 | 0.080 | 0.030 | 0.063 | 0.106 | 22.895794 | -13.690101 | -437.93 | 387.90 |
| 6 | GUIDE | 691537616 | 8.12 | 5433 | -0.207 | 0.004 | 0.044 | 0.072 | 22.649107 | -12.975933 | 1932.97 | 1705.68 |
| 7 | GUIDE | 691552152 | 7.43 | 5432 | -0.149 | -0.159 | 0.070 | 0.105 | 22.421034 | -13.223829 | 909.73 | 2328.62 |

2.4 Star Slots

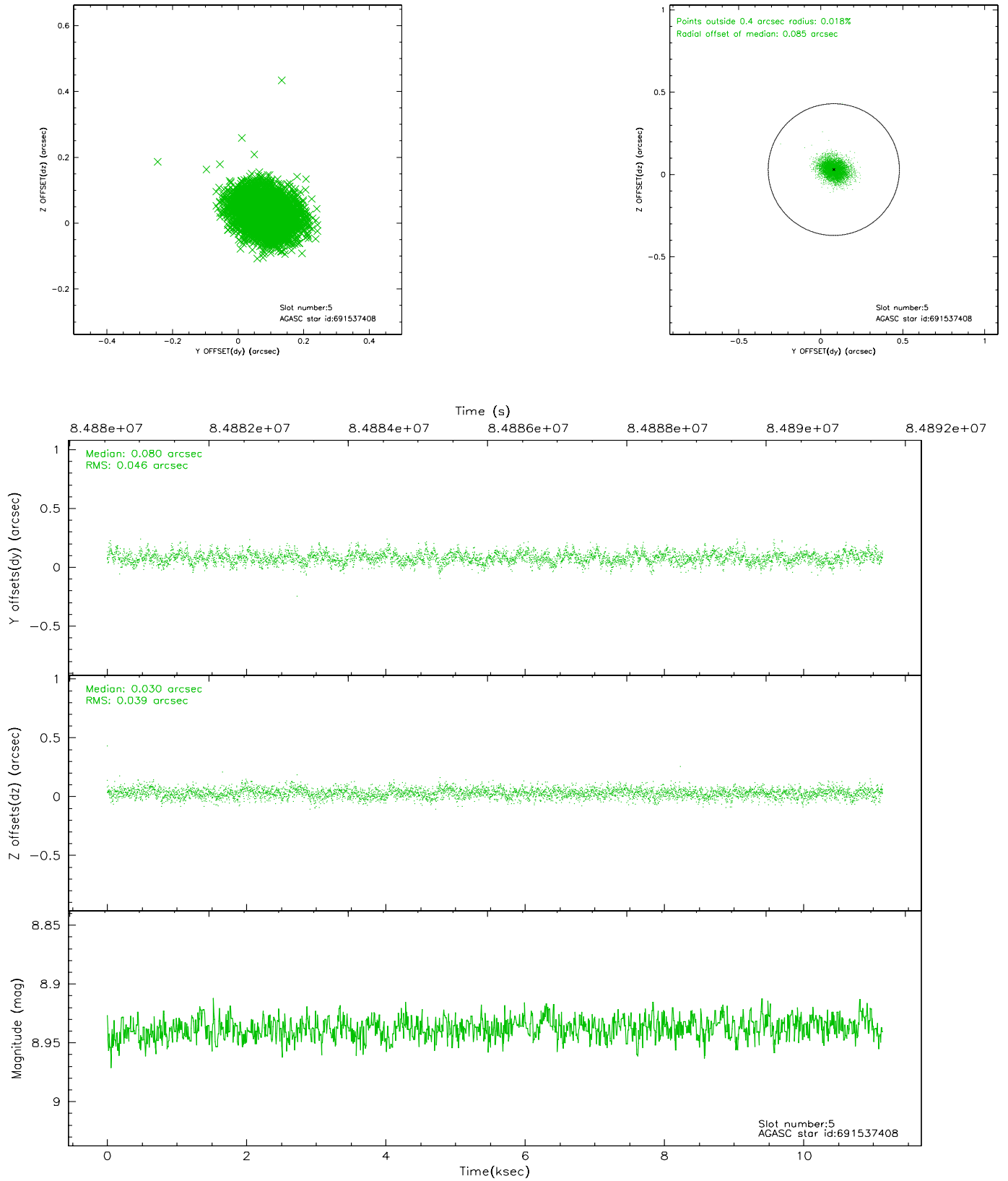
2.4.1 Slot 3



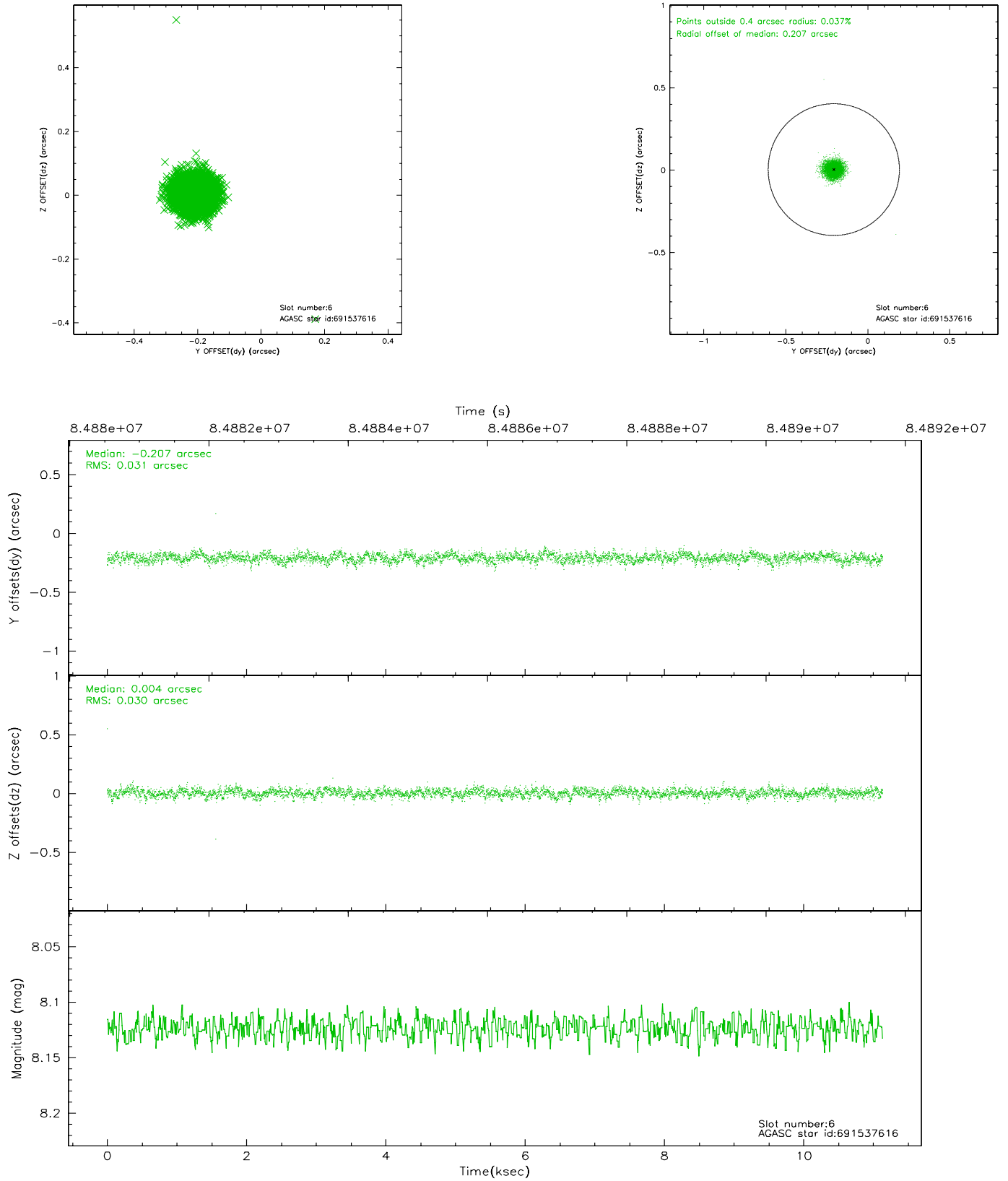
2.4.2 Slot 4



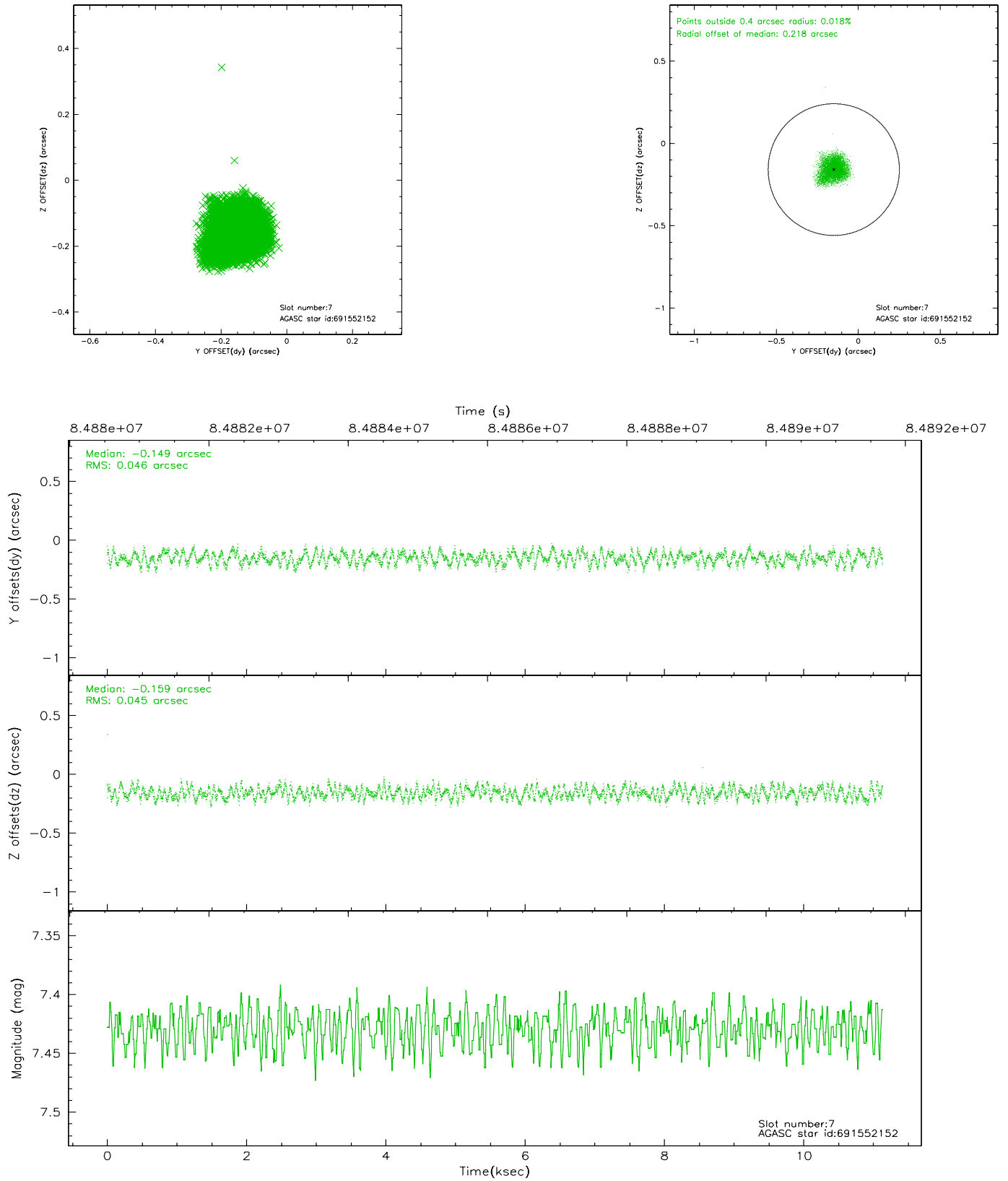
2.4.3 Slot 5



2.4.4 Slot 6

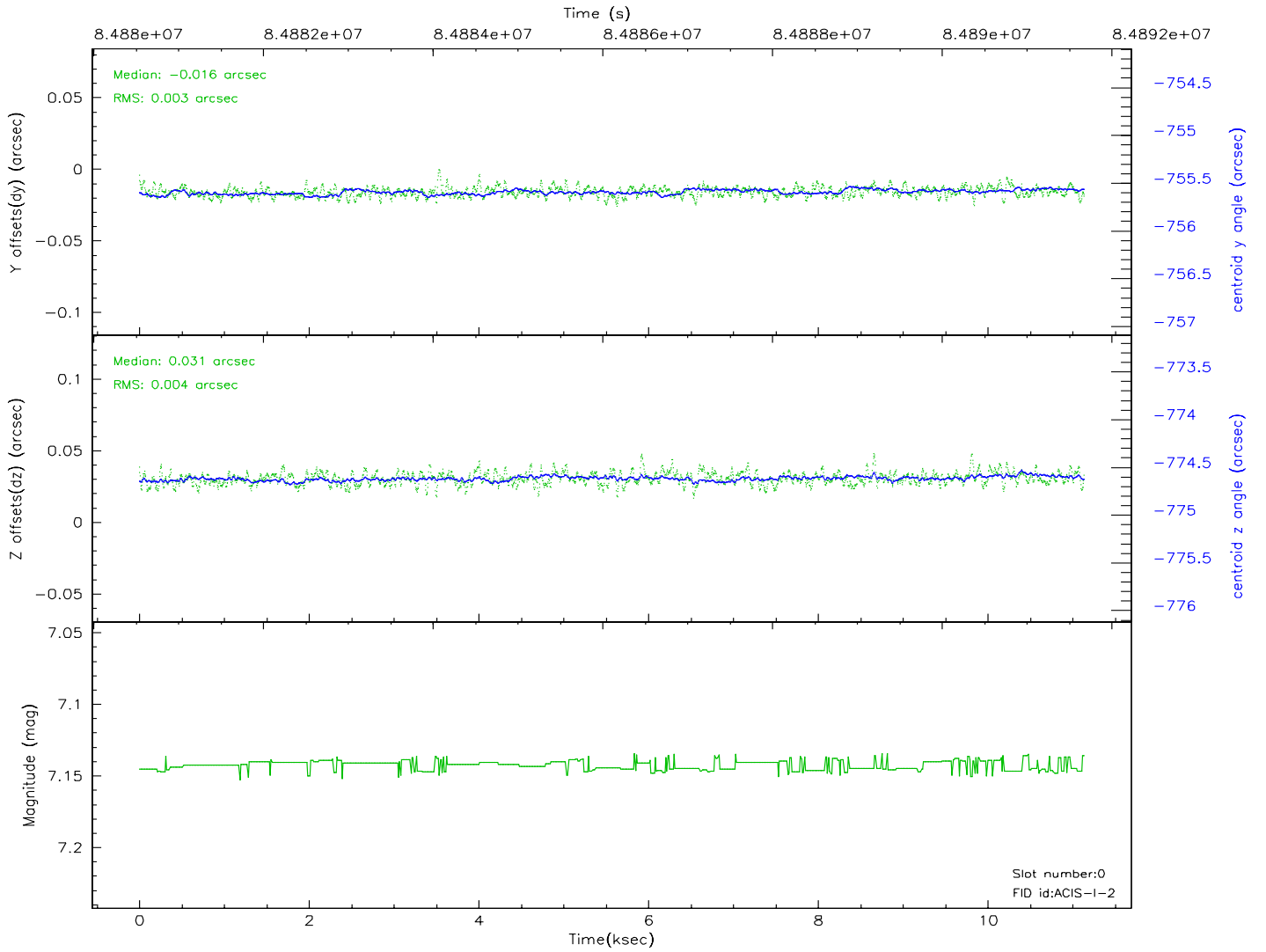
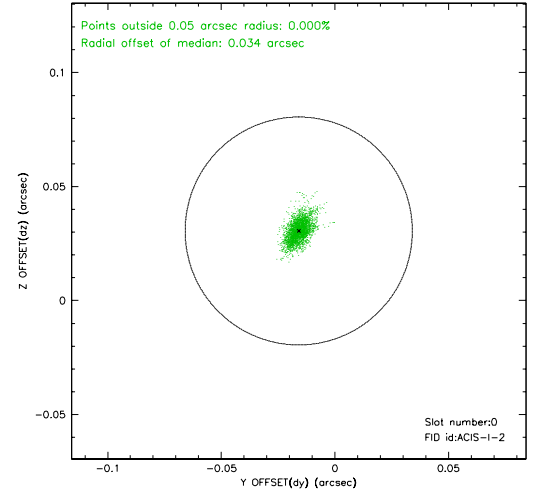
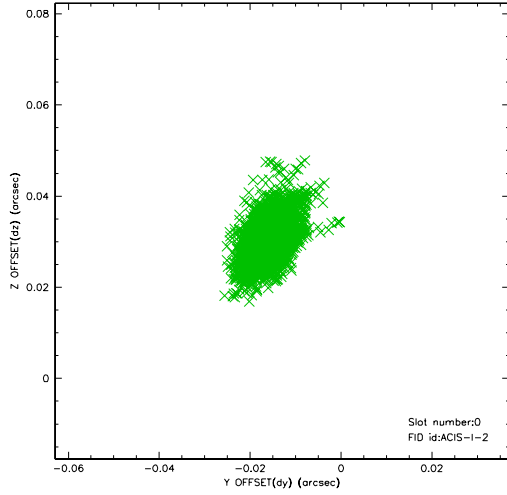


2.4.5 Slot 7

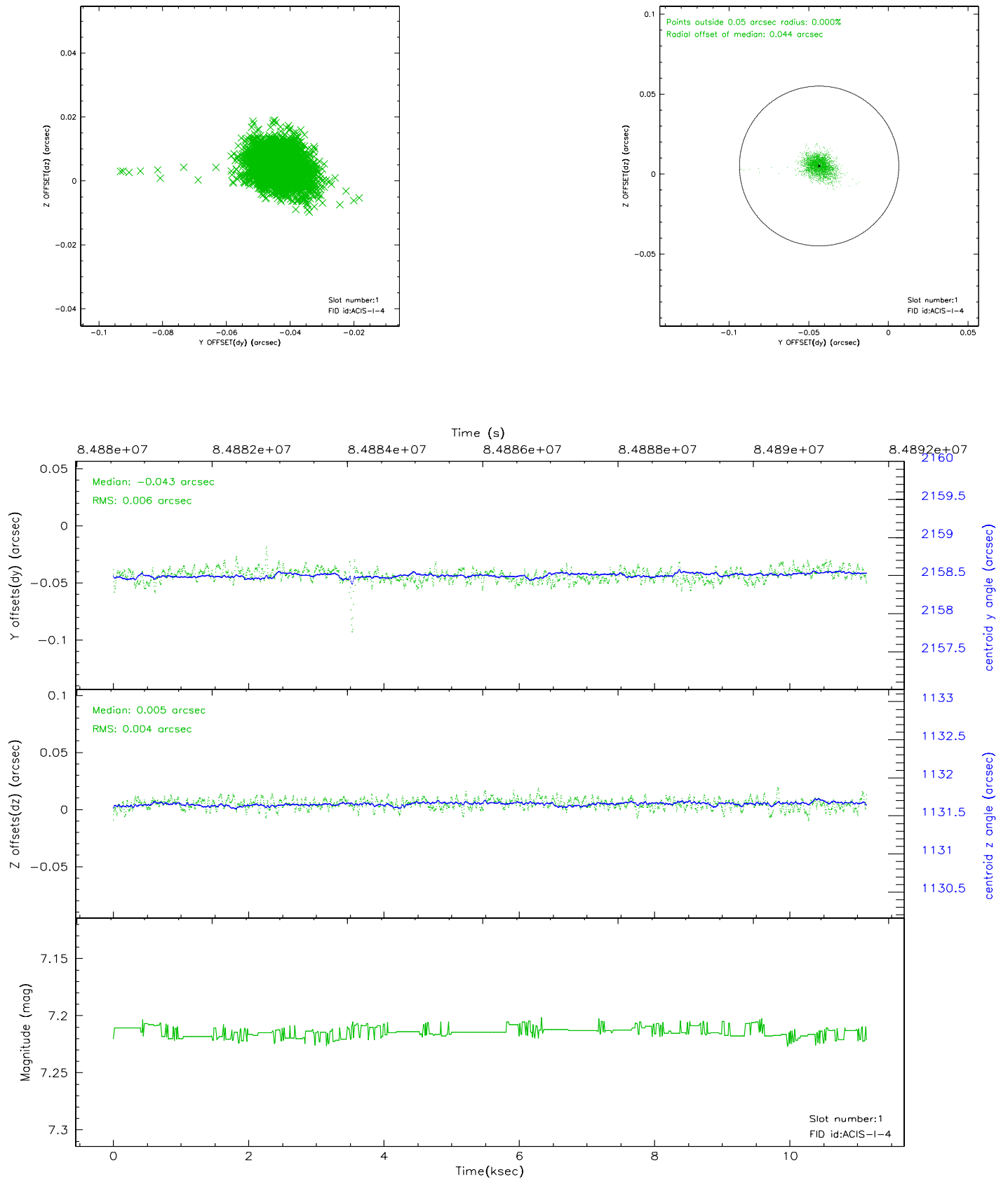


2.5 FID Slots

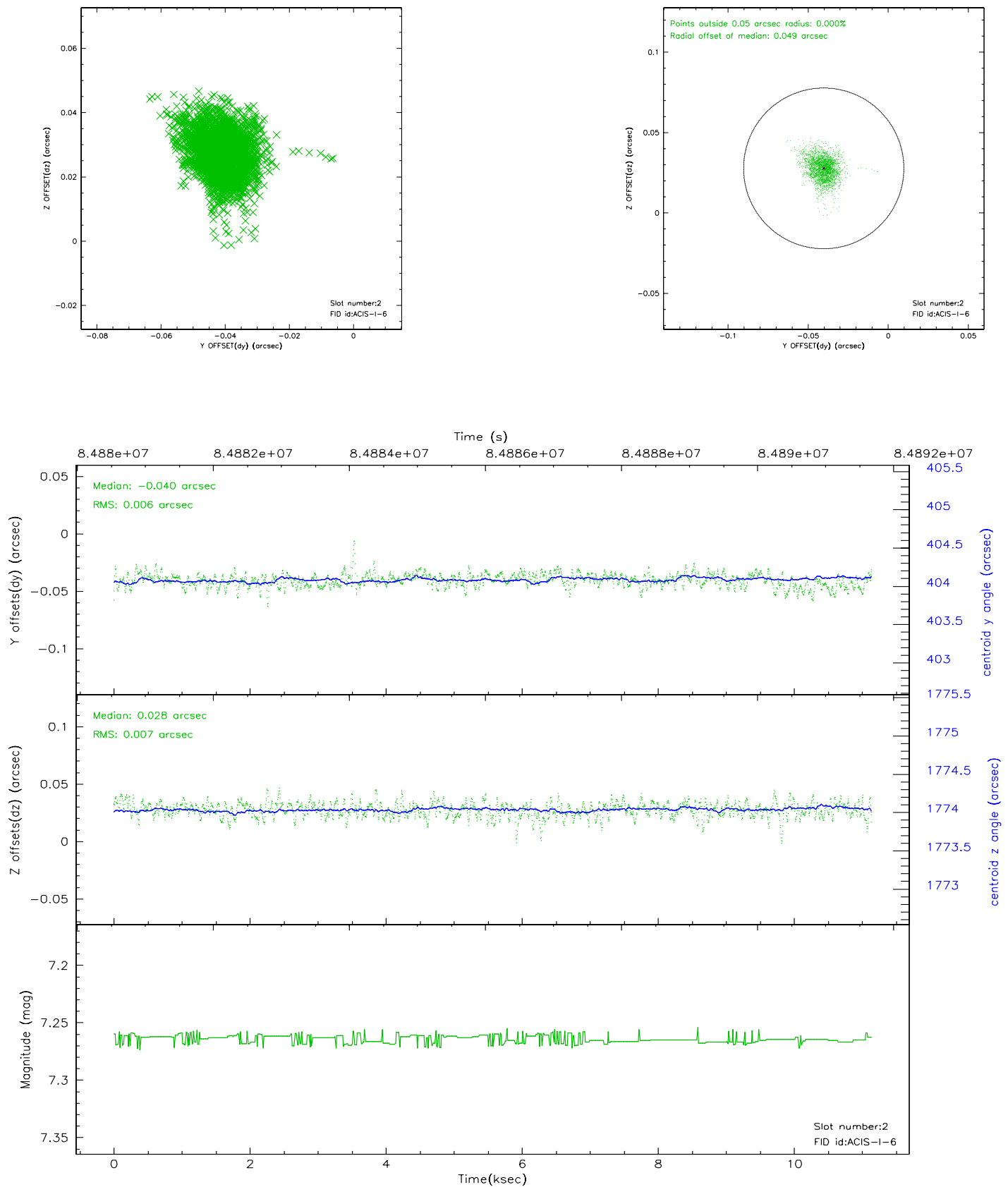
2.5.1 Slot 0



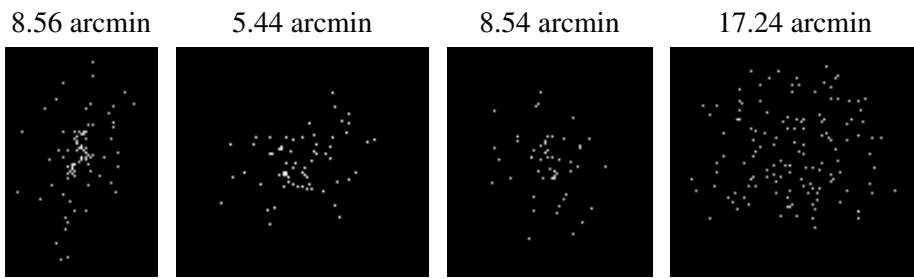
2.5.2 Slot 1



2.5.3 Slot 2



3 Point Sources



A Summary

A.1 Status

| | |
|----------------------------|------------|
| V&V Scientist | Jen Lauer |
| V&V Date (YYYY-MM-DD) | 2007.06.07 |
| V&V Edition | 1 |
| V&V Disposition and Status | OK |
| V&V Charge Time | 10.092 |

A.2 Comments