

# V&V Reference Report

## L2 ASCDS Version : 8.4.5

Observation 5032 - L2 Version 4  
Chandra X-Ray Center

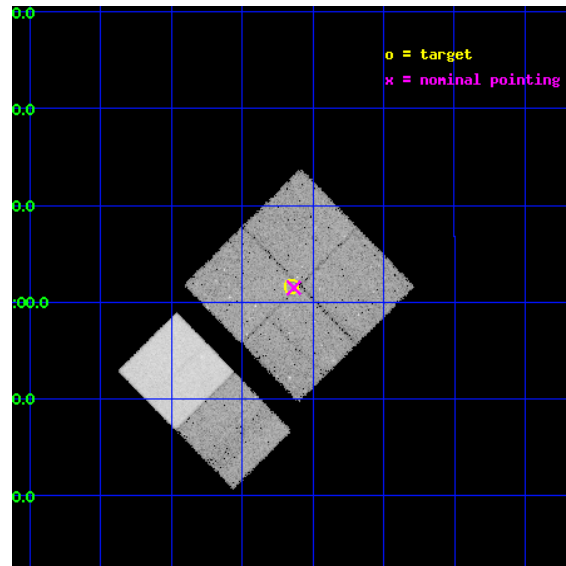
L2 Processing Date : Dec 3 2012

## Contents

<b>1</b>	<b>Front</b>	<b>2</b>
<b>2</b>	<b>OBI</b>	<b>3</b>
2.1	OBI . . . . .	3
2.1.1	Images . . . . .	3
2.1.2	Bias . . . . .	3
2.1.3	Parameters . . . . .	4
2.1.4	Events . . . . .	4
2.2	Compared Parameters . . . . .	5
2.3	Aspect . . . . .	6
2.4	Star Slots . . . . .	9
2.4.1	Slot 3 . . . . .	9
2.4.2	Slot 4 . . . . .	10
2.4.3	Slot 5 . . . . .	11
2.4.4	Slot 6 . . . . .	12
2.4.5	Slot 7 . . . . .	13
2.5	FID Slots . . . . .	14
2.5.1	Slot 0 . . . . .	14
2.5.2	Slot 1 . . . . .	15
2.5.3	Slot 2 . . . . .	16
<b>A</b>	<b>Summary</b>	<b>17</b>
A.1	Status . . . . .	17
A.2	Comments . . . . .	17

# 1 Front

seq_num	900339	Sequence number
obs_id	5032	Observation id
title	A Chandra survey of Extremely Red Objects	Proposal title
observer	Dr. Marcella Brusa	Principal investigator
object	Daddi field - 1	Source name
dtcycle	0	&#160
cycle	P	events from which exps? Prim/Second/Both
ra_targ	222.287917	Observer's specified target RA [deg]
dec_targ	9.026667	Observer's specified target Dec [deg]
ra_nom	222.2835693432	Nominal RA [deg]
dec_nom	9.0248674954123	Nominal Dec [deg]
roll_nom	225.45928604835	Nominal Roll [deg]
revision	4	Processing version of data
ontime	29123.158911228	Sum of GTIs [s]
livetime	28754.383937233	Livetime [s]
ontime0	29126.399891496	Sum of GTIs [s]
ontime1	29126.399891496	Sum of GTIs [s]
ontime2	29126.399891496	Sum of GTIs [s]
ontime3	29123.158911228	Sum of GTIs [s]
ontime6	29126.399891496	Sum of GTIs [s]
ontime7	29126.399891496	Sum of GTIs [s]
l2events	225714	Number of level 2 events

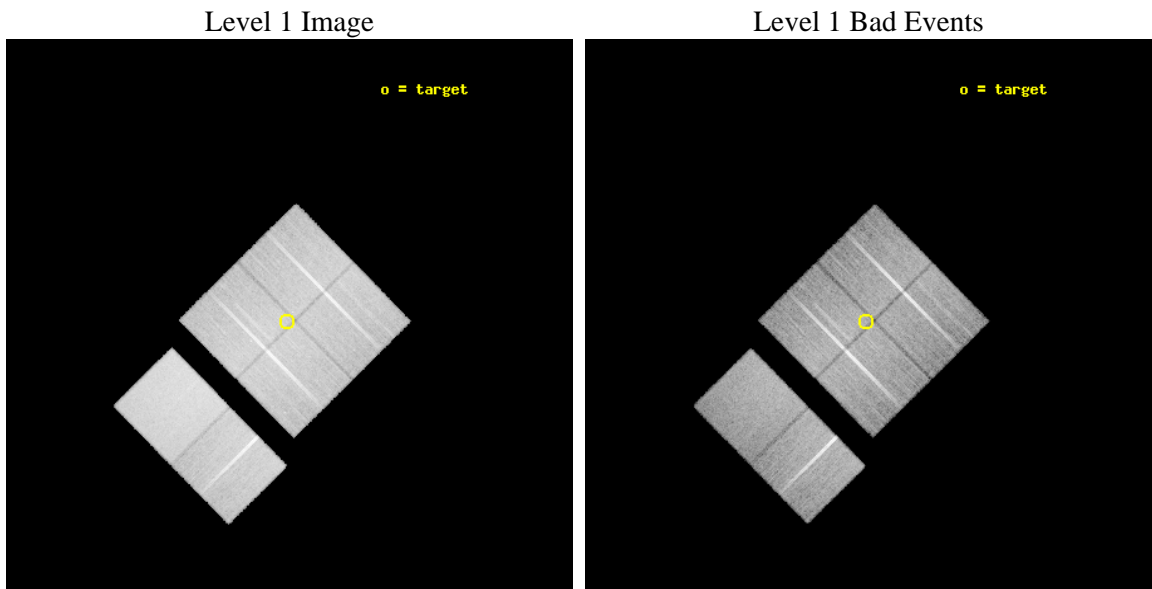




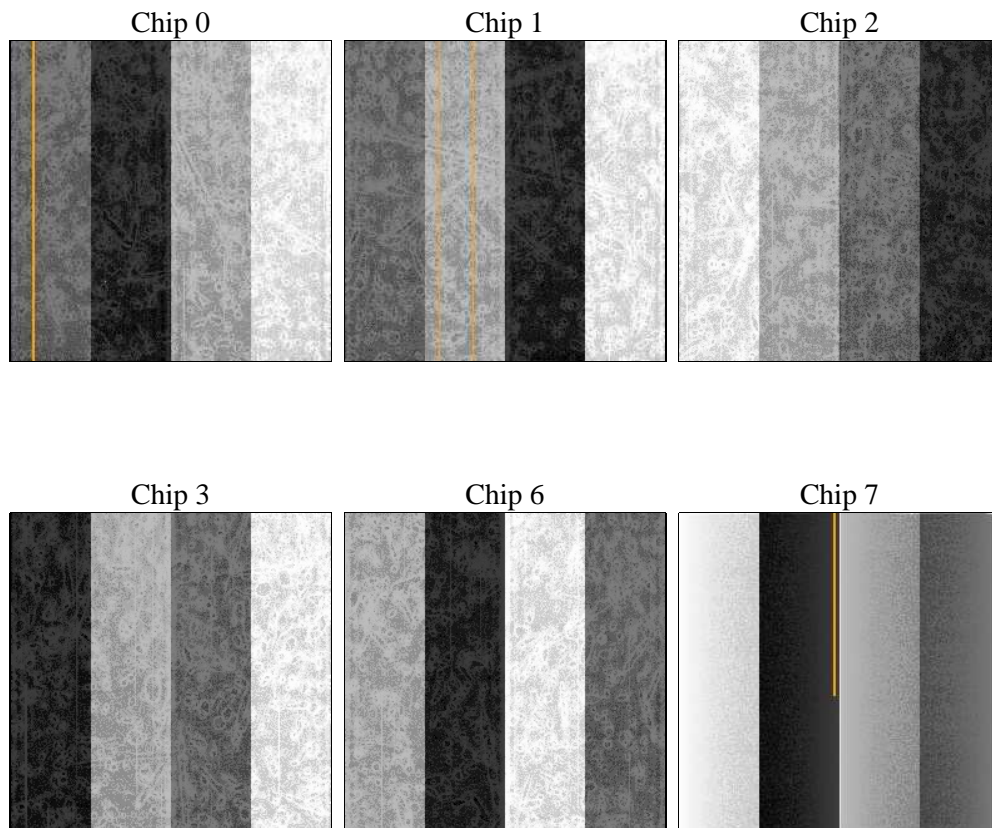
## 2 OBI

### 2.1 OBI

#### 2.1.1 Images



#### 2.1.2 Bias



### 2.1.3 Parameters

obi_num	0	Obi number	sched_exp_time	28971.000000	[s] Scheduled observation exposure time
ascdsver	8.4.5	Processing system revision	ontime	29123.158911228	Sum of GTIs [s]
caldsver	4.5.2	&#160	ontime0	29126.399891496	Sum of GTIs [s]
date	2012-12-03T00:58:21	Date and time of file creation	ontime1	29126.399891496	Sum of GTIs [s]
revision	4	Processing version of data	ontime2	29126.399891496	Sum of GTIs [s]
			ontime3	29123.158911228	Sum of GTIs [s]
			ontime6	29126.399891496	Sum of GTIs [s]
			ontime7	29126.399891496	Sum of GTIs [s]
			l1events	1315112	Number of level 1 events

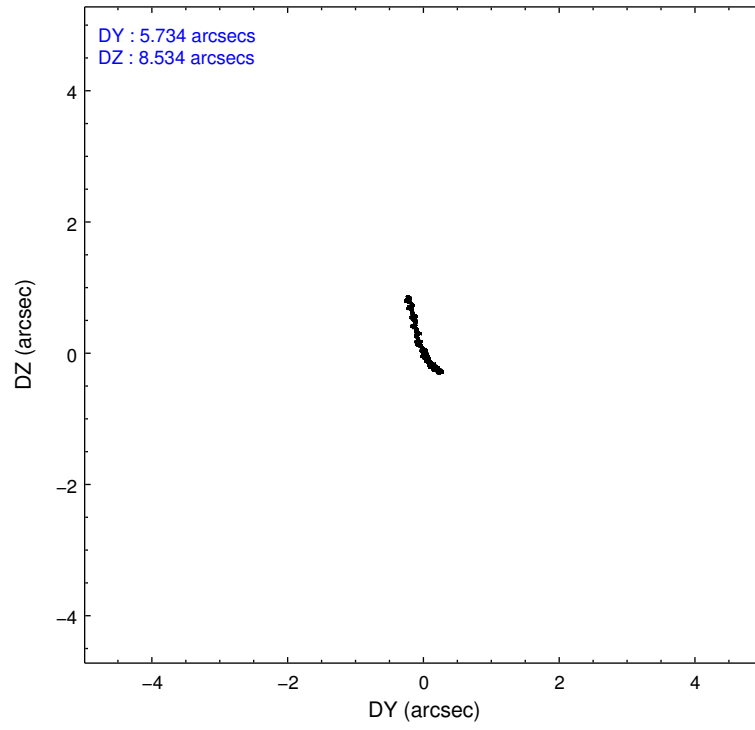
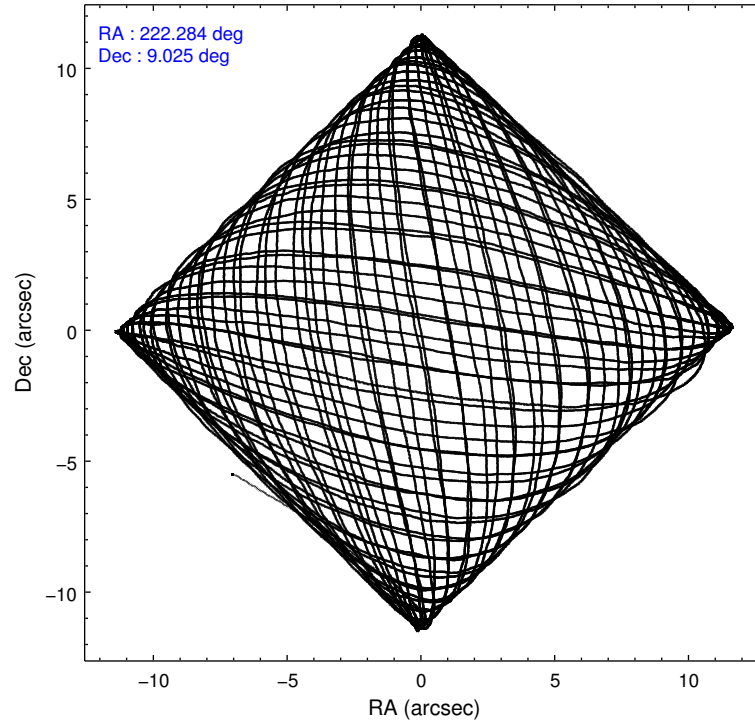
### 2.1.4 Events

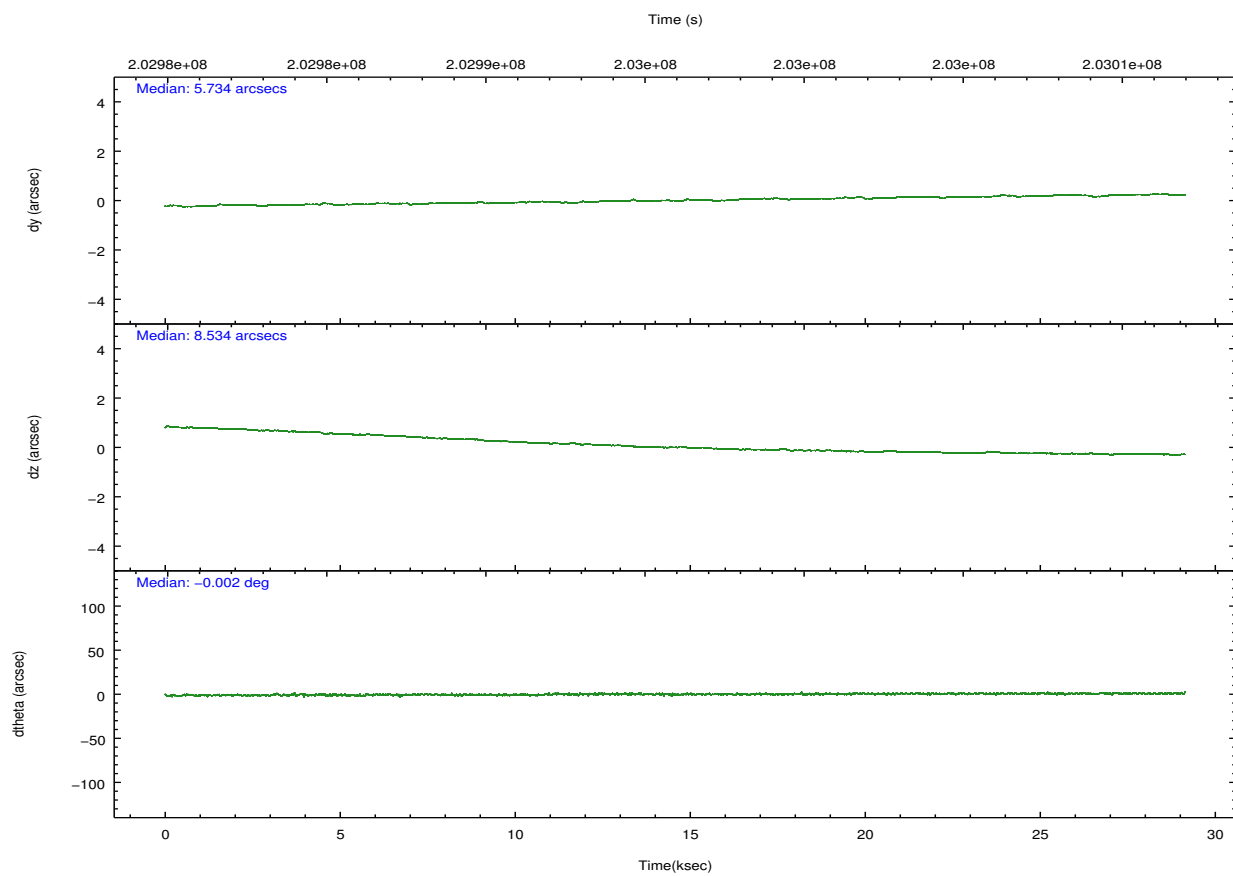
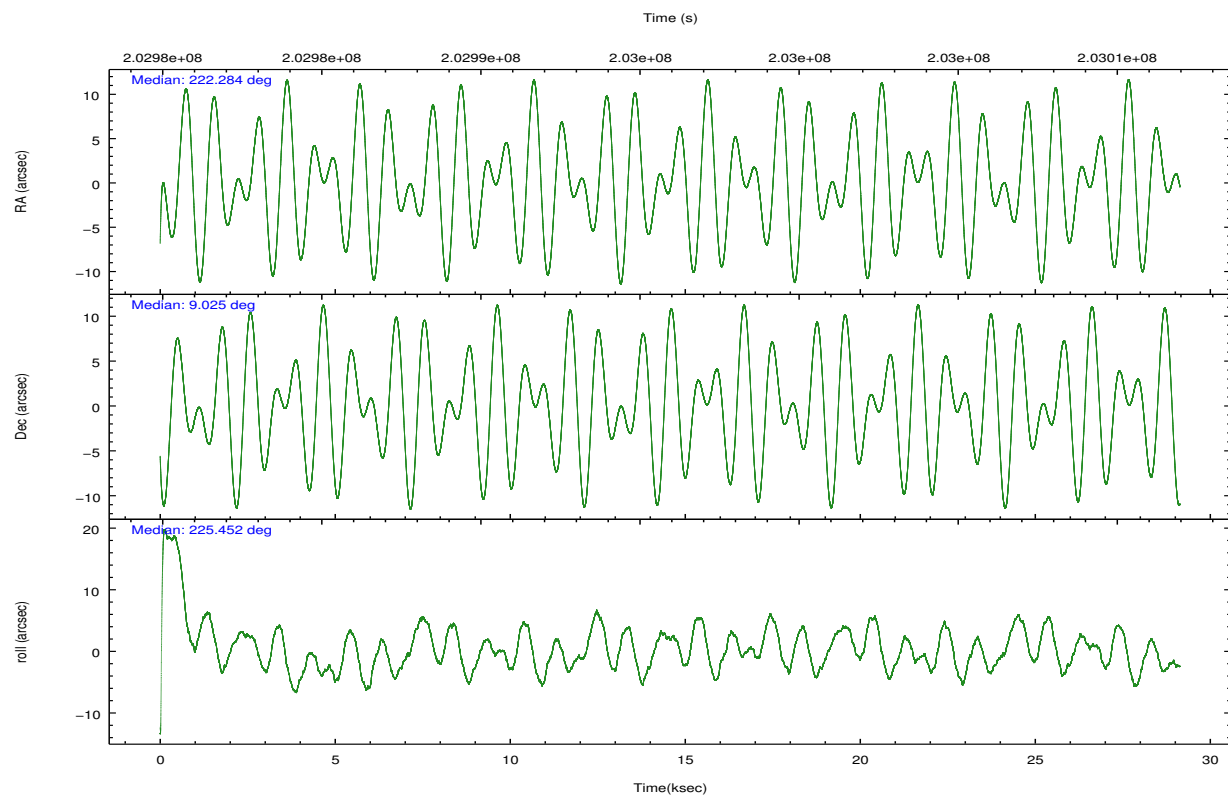
	ccd 0	ccd 1	ccd 2	ccd 3	ccd 6	ccd 7		ccd 0	ccd 1	ccd 2	ccd 3	ccd 6	ccd 7
level 1 events	194049	195580	211166	210296	215918	288103	grade 0 events	11334	10629	11337	11226	9909	10845
rejected events	168484	169260	185907	185251	190671	169517		5%	5%	5%	5%	4%	3%
rejected %	86%	86%	88%	88%	88%	58%	grade 1 events	119	101	107	136	105	307
								0%	0%	0%	0%	0%	0%
							grade 2 events	5254	5661	5119	4751	5338	23699
								2%	2%	2%	2%	2%	8%
							grade 3 events	2432	2598	2454	2403	2488	10541
								1%	1%	1%	1%	1%	3%
							grade 4 events	2324	2571	2356	2373	2461	10562
								1%	1%	1%	1%	1%	3%
							grade 5 events	8702	9149	8332	9456	10004	27658
								4%	4%	3%	4%	4%	9%
							grade 6 events	4275	4916	4035	4355	5104	63228
								2%	2%	1%	2%	2%	21%
							grade 7 events	159609	159955	177426	175596	180509	141263
								82%	81%	84%	83%	83%	49%

## 2.2 Compared Parameters

Parameter	Planned	Actual	Parameter	Planned	Actual
Instrument	ACIS	ACIS	Obspar format version number	7	7
Detector	ACIS-012367	ACIS-012367	Obspar file type	PREDICTED	ACTUAL
Grating	NONE	NONE	Obspar update status	NONE	UPDATED
Data mode	VFAINT	VFAINT	Number of optional ACIS chips dropped	0	0
Observation mode	POINTING	POINTING	On-chip summing requested	N	N
[deg] Pointing RA	222.290437	222.2835693431957	Subarray requested	NONE	NONE
[deg] Pointing Dec	9.051429	9.024867495412261	Alternating exposures requested	N	N
[deg] Pointing Roll	225.249541	225.459286048352	[s] Primary exposure time	0.000000	3.2
[mm] SIM focus pos	-0.782348	-0.7809083437167272			
[mm] SIM defocus	0	0.001439871863259334			
[mm] SIM translation stage pos	-233.592463	-233.5874344608287			
[mm] SIM translation stage offset	0	-0.005018542100998502			
[s] Observation start time (MET)	202981536.184000	202980448.71082			
Observation start date	2004-06-07T07:44:32	2004-06-07T07:27:28			
[s] Observation end time (MET)	203010507.184000	203011320.68719			
Observation end date	2004-06-07T15:47:23	2004-06-07T16:02:00			
Read mode	TIMED	TIMED			

## 2.3 Aspect



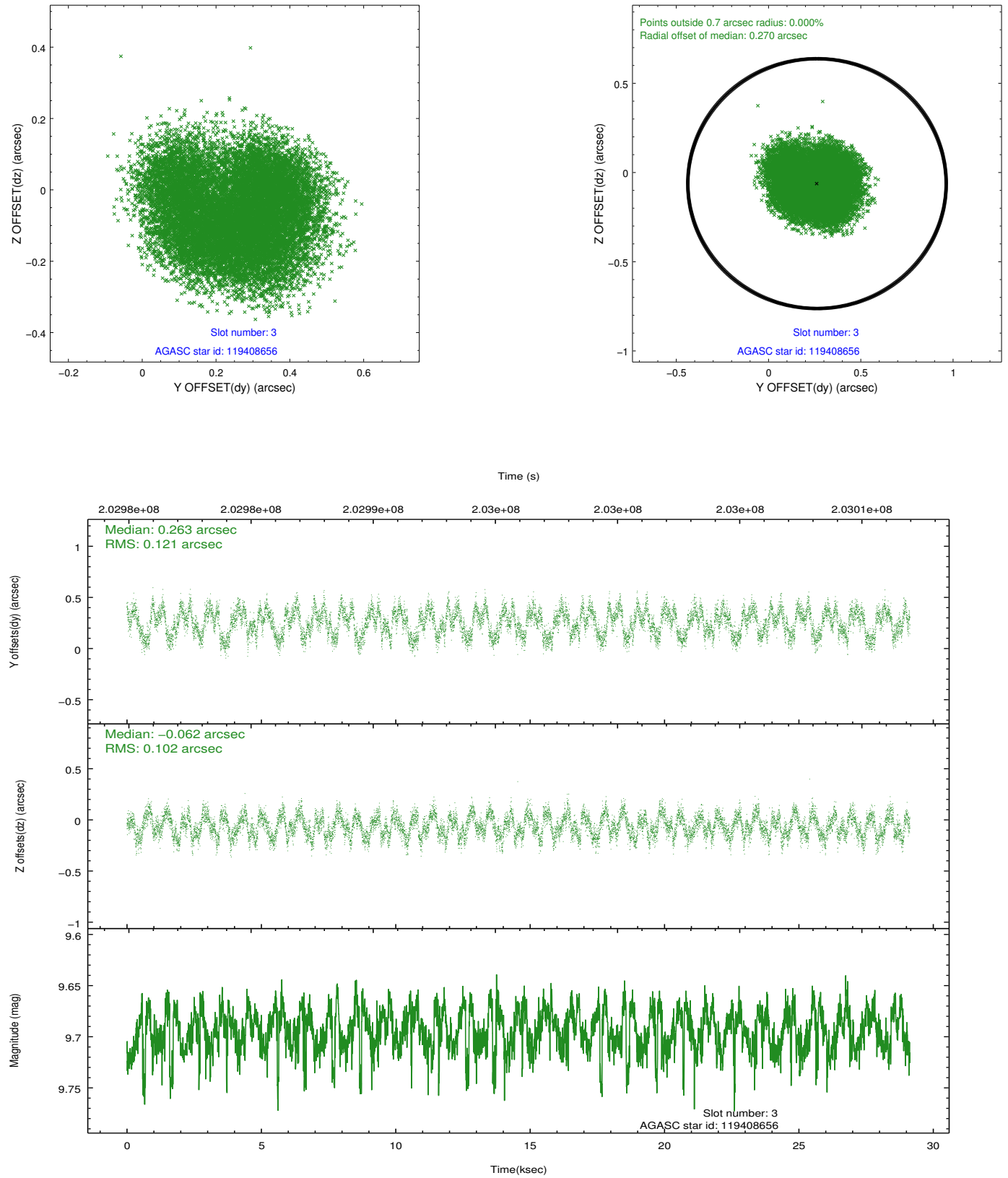


### Slot Statistics

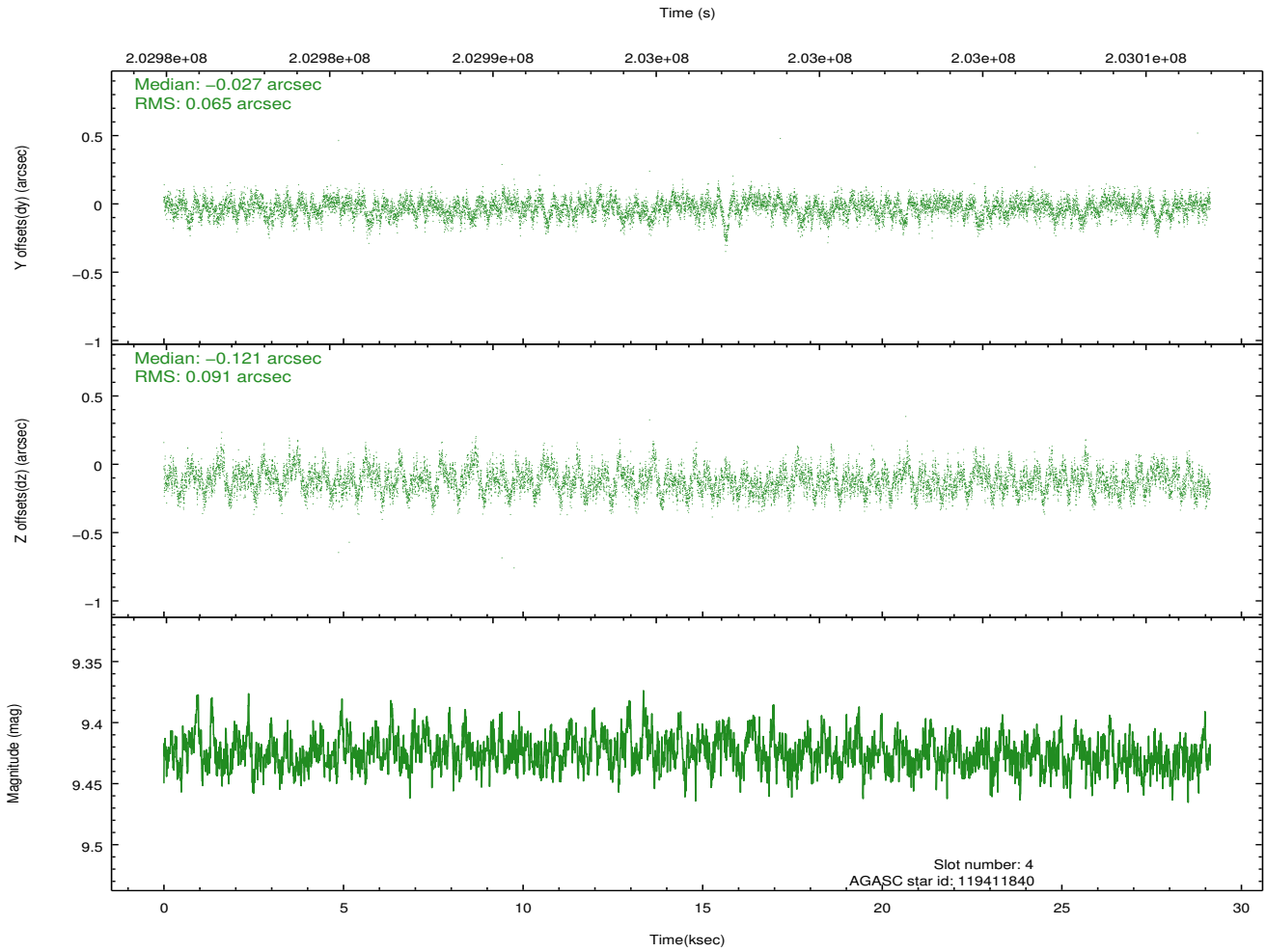
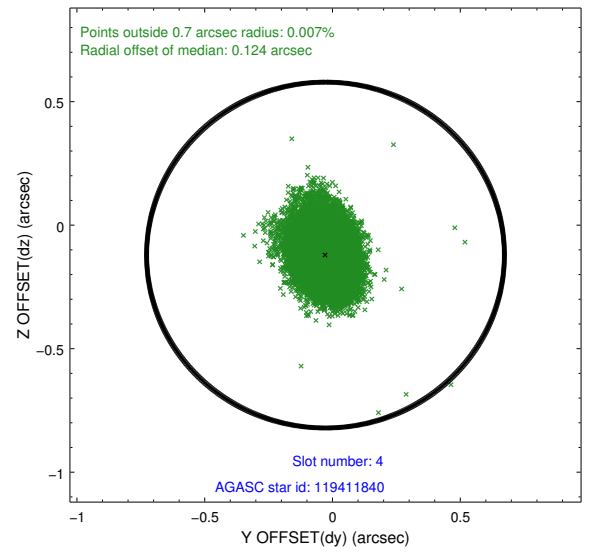
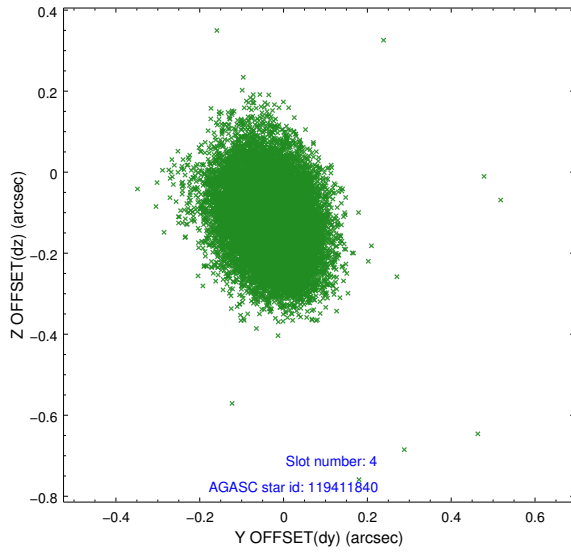
slot	status	id	mag	n_pts	med_dy	med_dz	dr1	dr2	ra	dec	mean_y	mean_z
0	FID	ACIS-I-2	7.14	7105	-0.049	-0.069	0.011	0.019	0.000000	0.000000	-760.25	-838.51
1	FID	ACIS-I-4	7.19	7104	0.119	0.053	0.012	0.021	0.000000	0.000000	2153.95	1067.72
2	FID	ACIS-I-5	7.23	7106	-0.171	0.084	0.013	0.021	0.000000	0.000000	-1814.09	1065.72
3	GUIDE	119408656	9.69	14183	0.263	-0.062	0.175	0.255	222.086631	8.778551	1208.42	176.86
4	GUIDE	119411840	9.43	14207	-0.027	-0.121	0.118	0.191	222.041386	9.490009	-498.46	-1739.86
5	GUIDE	120325072	9.27	14210	-0.134	0.146	0.087	0.141	222.613060	9.408510	-1719.94	-91.57
6	GUIDE	120333112	7.51	14213	-0.129	-0.034	0.074	0.116	222.982560	8.825335	-1156.94	2319.80
7	GUIDE	120327320	9.67	14193	0.026	0.079	0.210	0.375	222.306742	8.399268	1626.45	1694.93

## 2.4 Star Slots

### 2.4.1 Slot 3

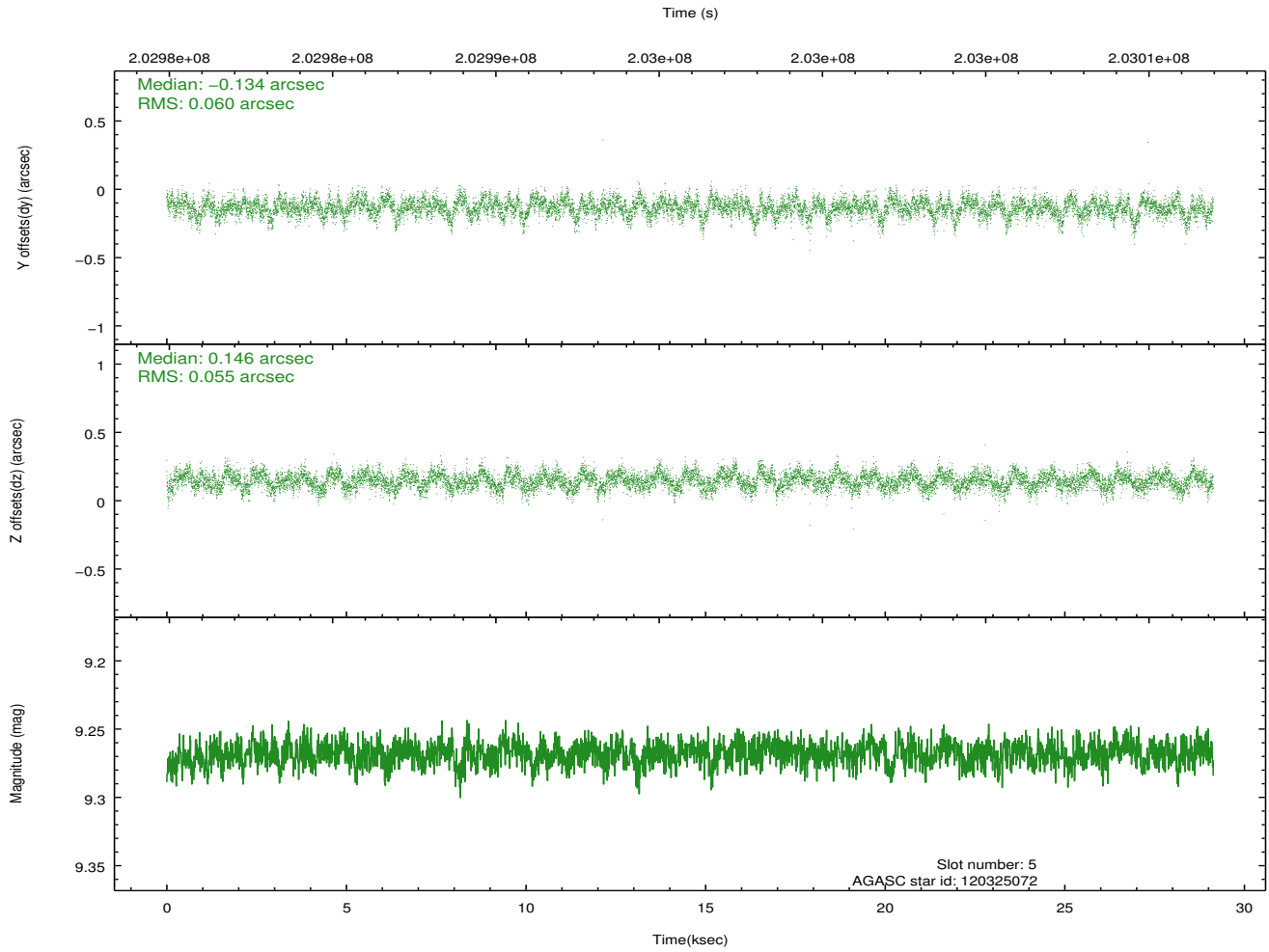
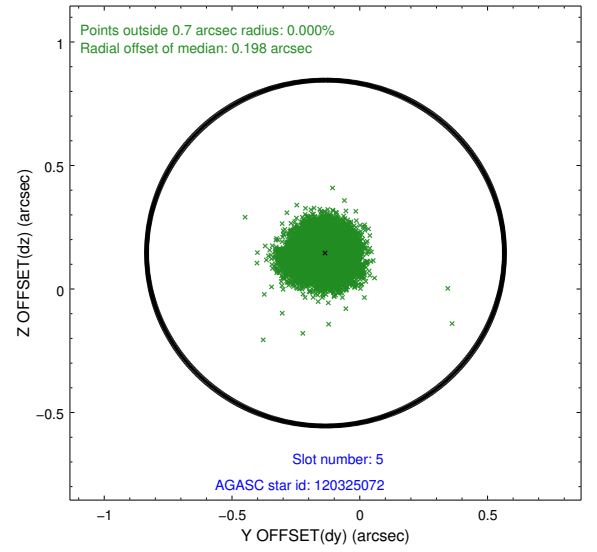
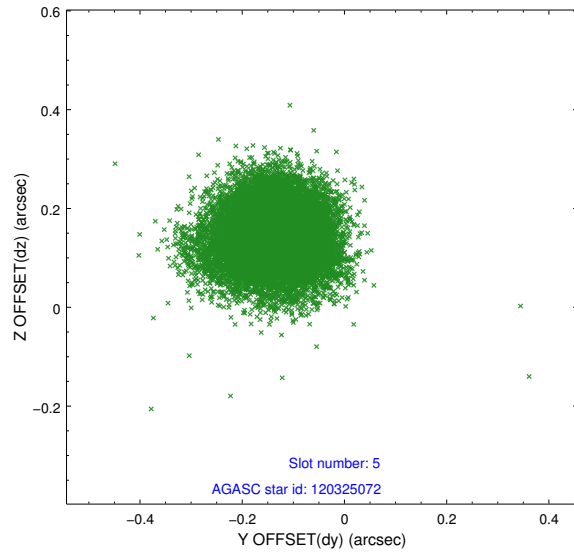


## 2.4.2 Slot 4

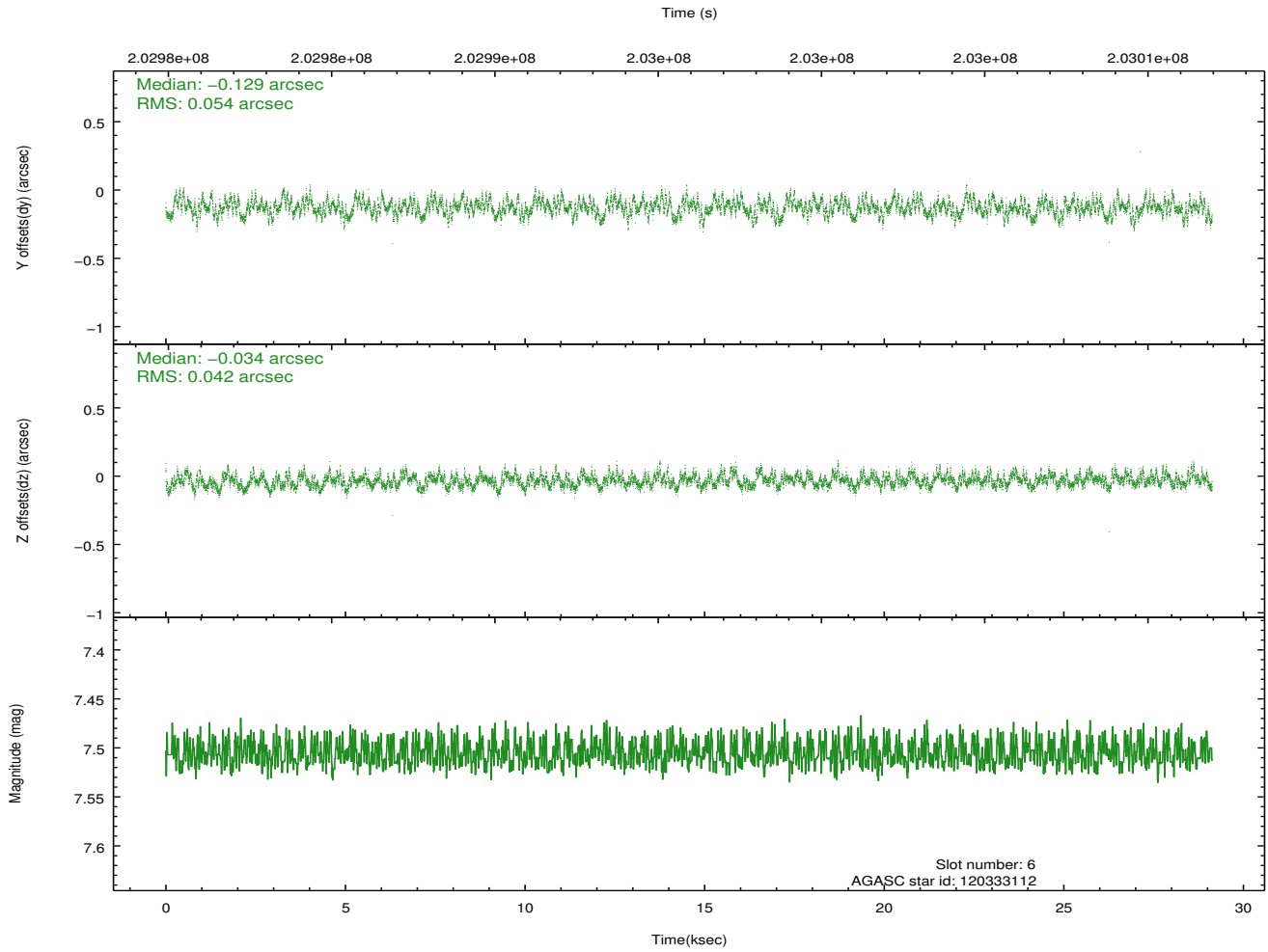
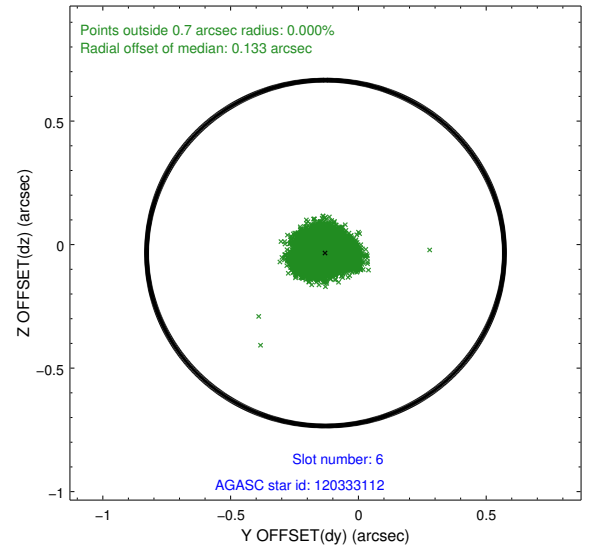
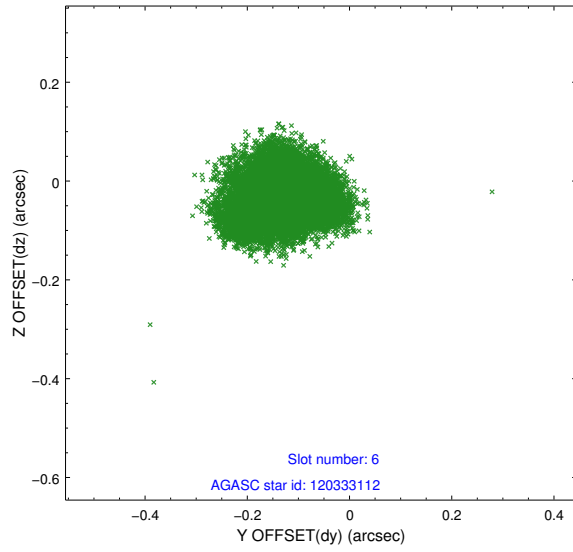




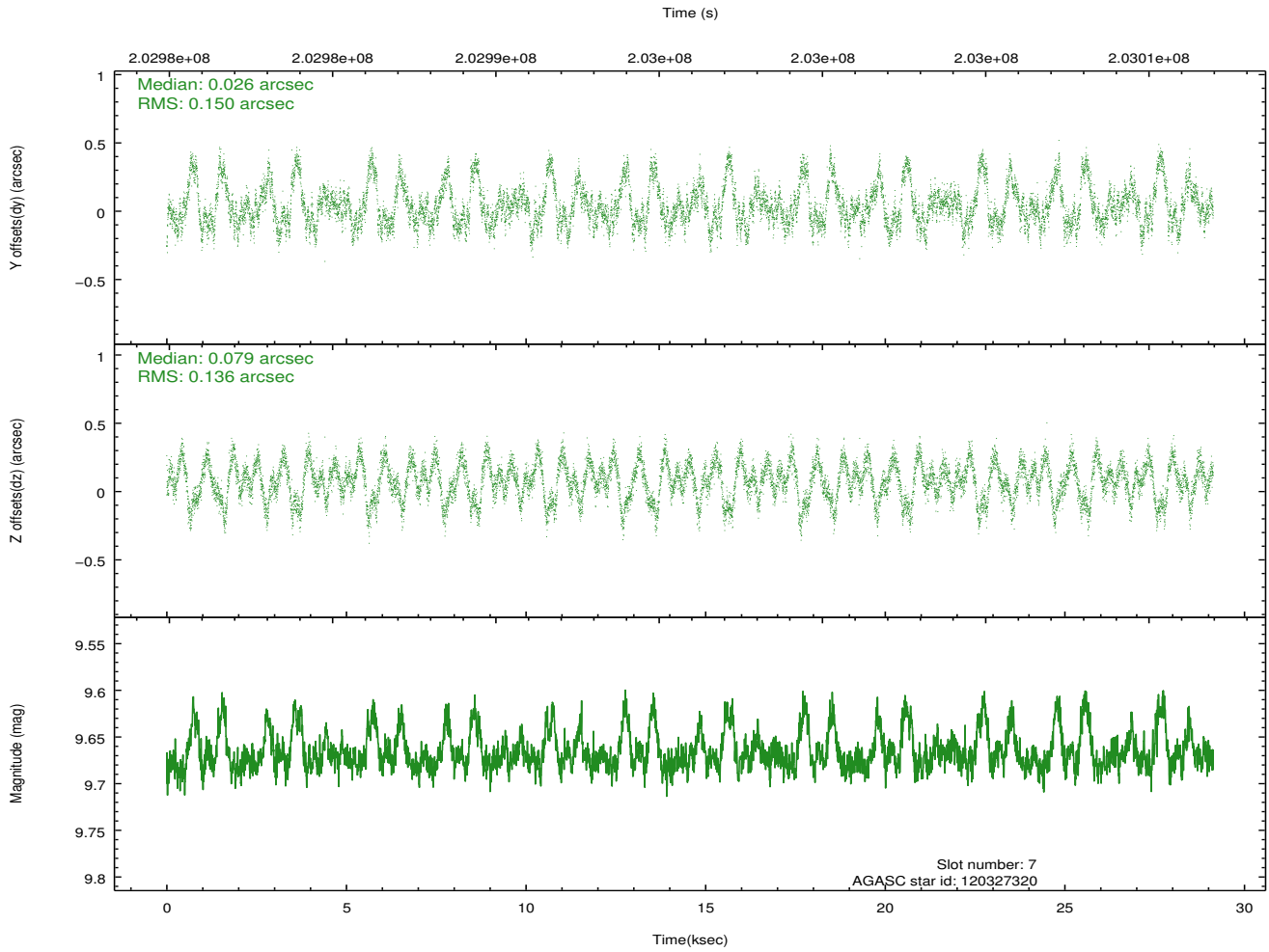
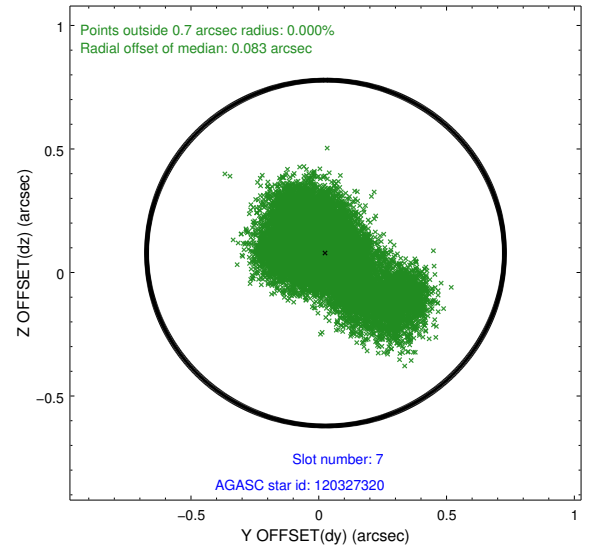
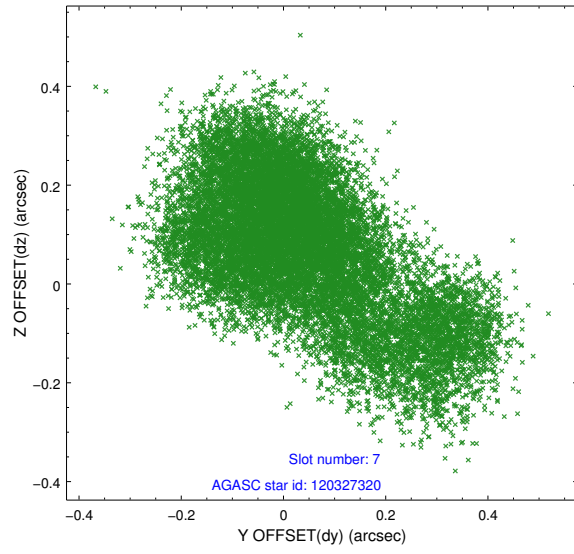
### 2.4.3 Slot 5



## 2.4.4 Slot 6

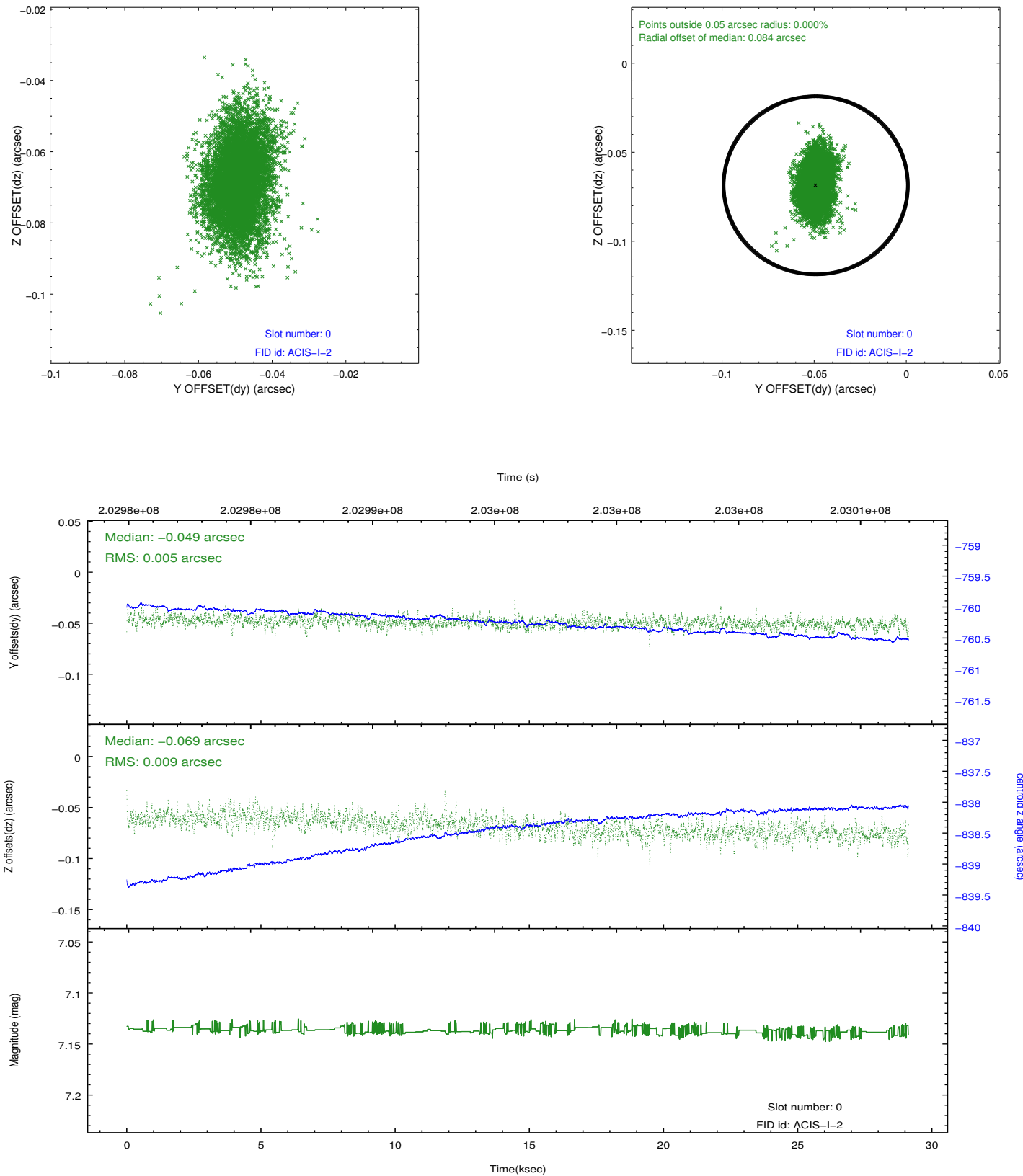


## 2.4.5 Slot 7

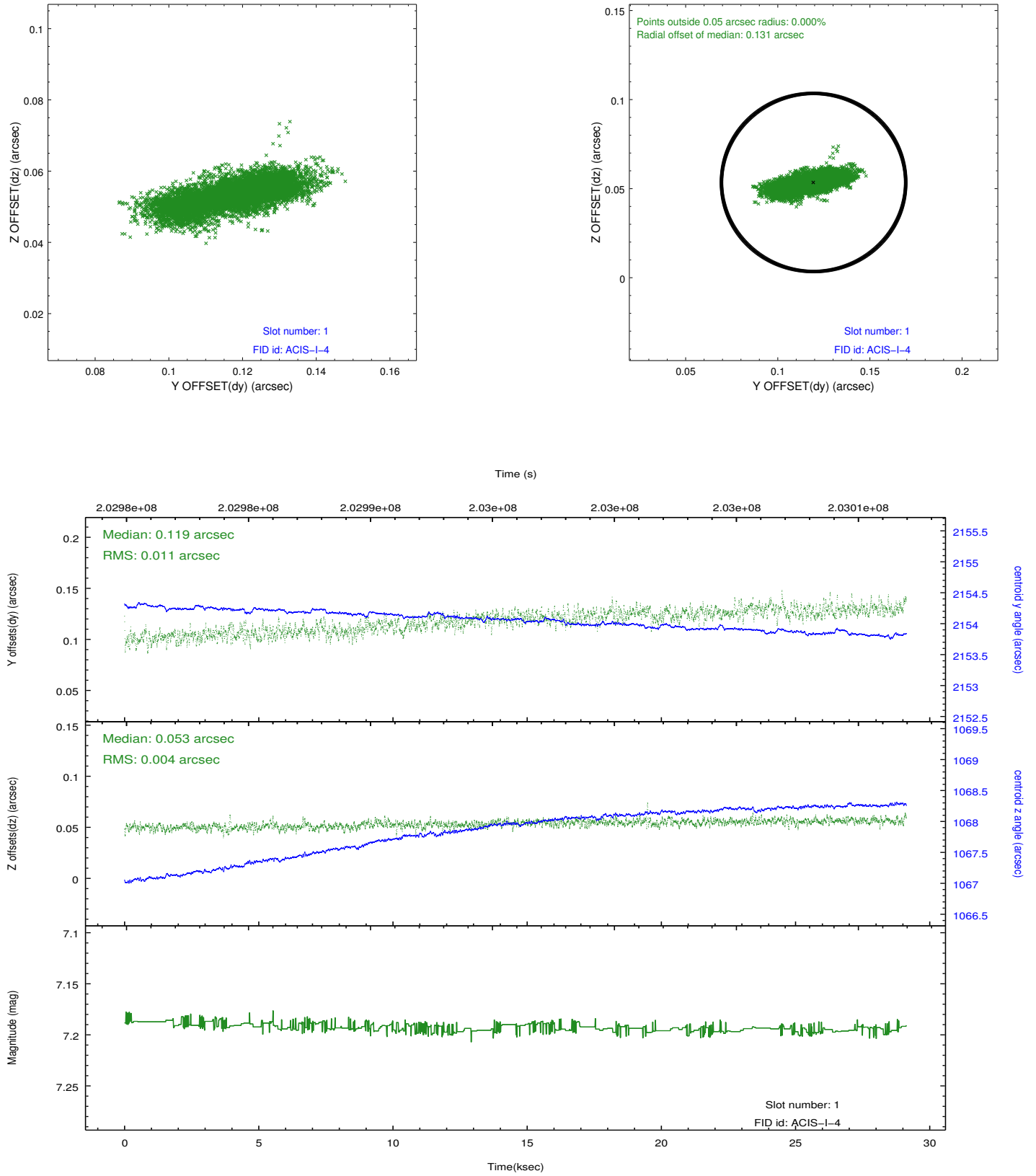


## 2.5 FID Slots

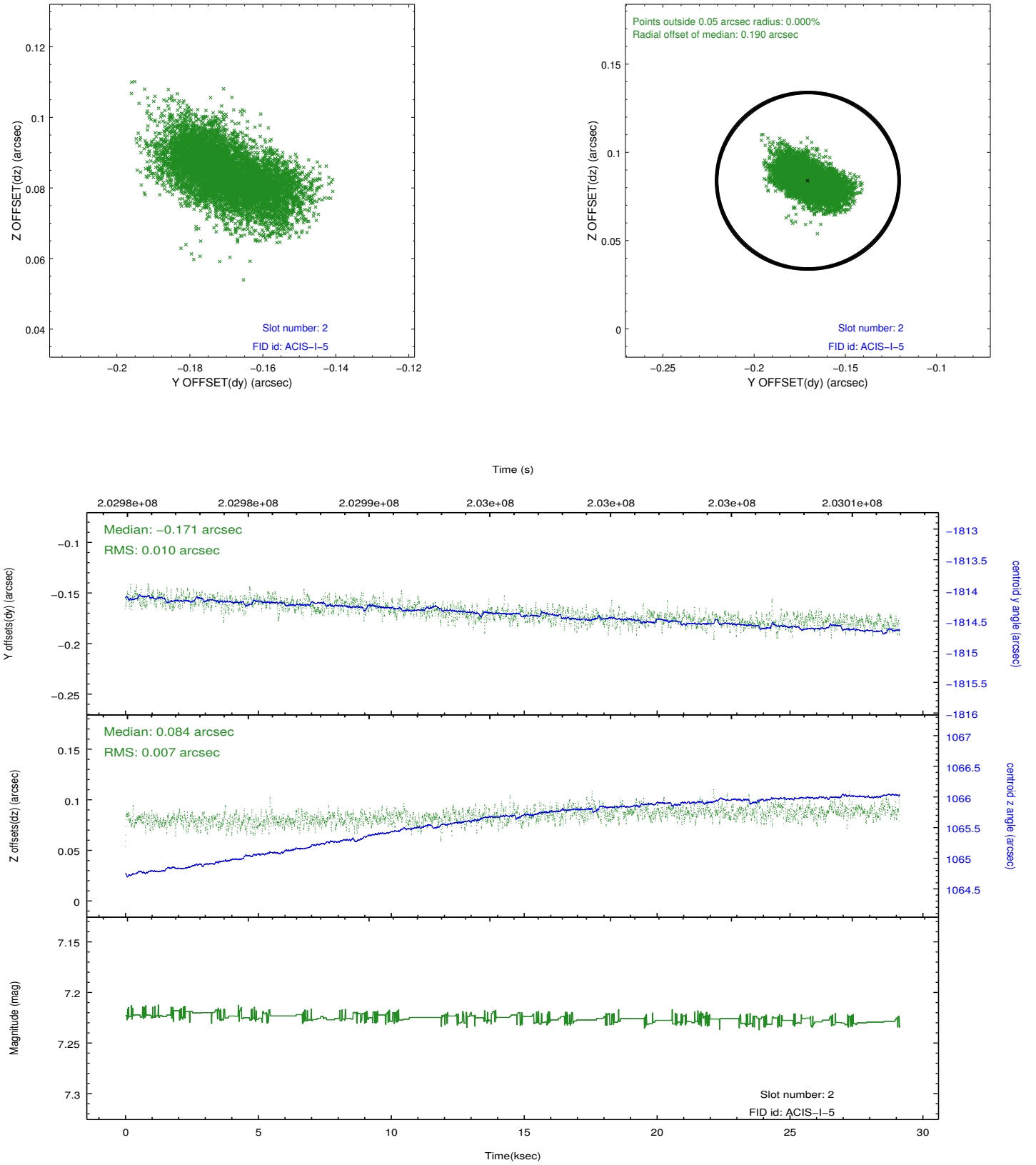
### 2.5.1 Slot 0



## 2.5.2 Slot 1



### 2.5.3 Slot 2



## **A Summary**

### **A.1 Status**

V&V Scientist	Jen Lauer
V&V Date (YYYY-MM-DD)	2012.12.18
V&V Edition	1
V&V Disposition and Status	OK
V&V Charge Time	29.123

### **A.2 Comments**