

V&V Reference Report

L2 ASCDS Version : 7.6.7

Observation 4942 - L2 Version 002
Chandra X-Ray Center

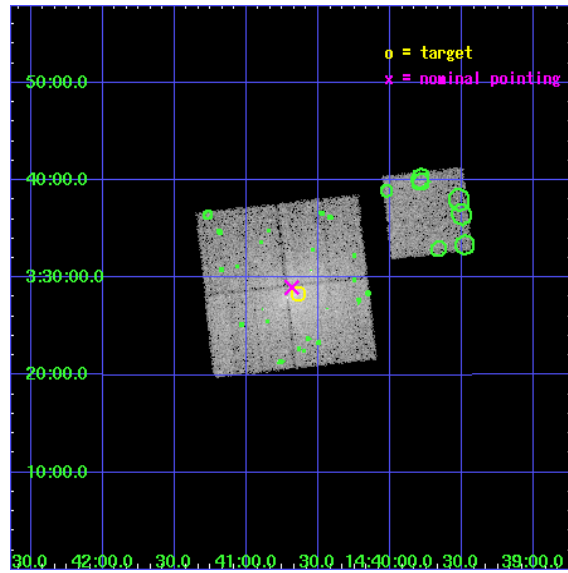
L2 Processing Date: Feb 25 2006

Contents

1	Front	2
2	OBI	3
2.1	OBI	3
2.1.1	Images	3
2.1.2	Bias	3
2.1.3	Parameters	4
2.1.4	Events	4
2.2	Compared Parameters	5
2.3	Aspect	6
2.4	Star Slots	9
2.4.1	Slot 3	9
2.4.2	Slot 4	10
2.4.3	Slot 5	11
2.4.4	Slot 6	12
2.4.5	Slot 7	13
2.5	FID Slots	14
2.5.1	Slot 0	14
2.5.2	Slot 1	15
2.5.3	Slot 2	16
3	Point Sources	17
A	Summary	18
A.1	Status	18
A.2	Comments	18

1 Front

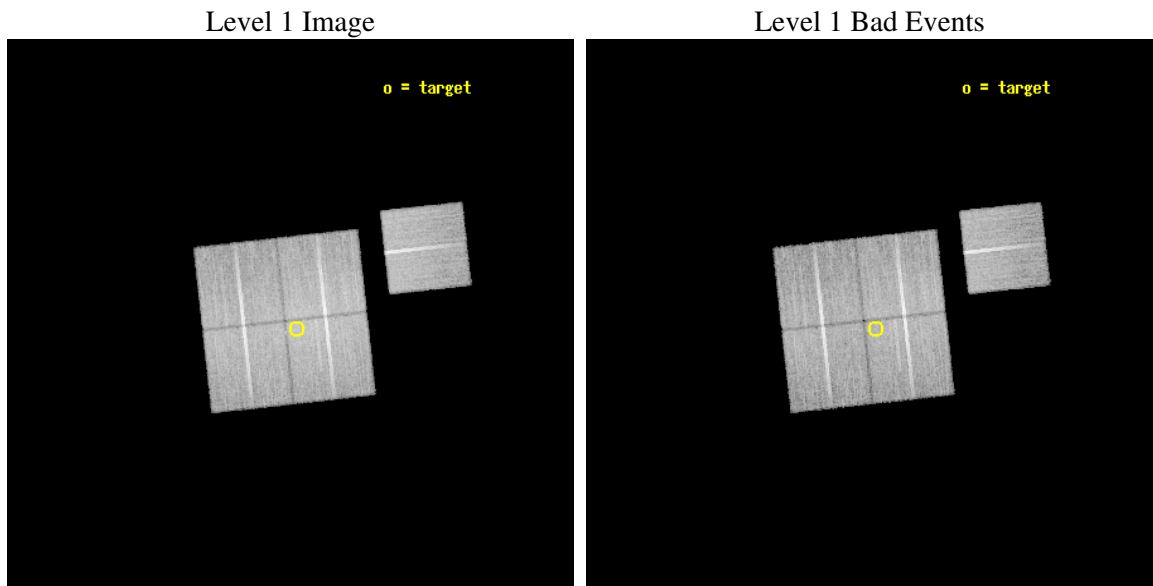
seq_num	800393
obs_id	4942
title	THE HIFLUGCS CLUSTER SURVEY: A CORNERSTONE FOR COSMOLOGY
observer	Dr. Thomas Reiprich
object	MKW8
dtcycle	0
cycle	P
ra_targ	220.159583
dec_targ	3.471722
ra_nom	220.17109354827
dec_nom	3.4830905065823
roll_nom	83.681834821507
revision	2
ontime	23448.317974418
livedtime	23141.948437682
ontime0	23454.599954903
ontime1	23451.458974659
ontime2	23451.458974659
ontime3	23448.317974418
ontime6	23454.599954903
l2events	95852



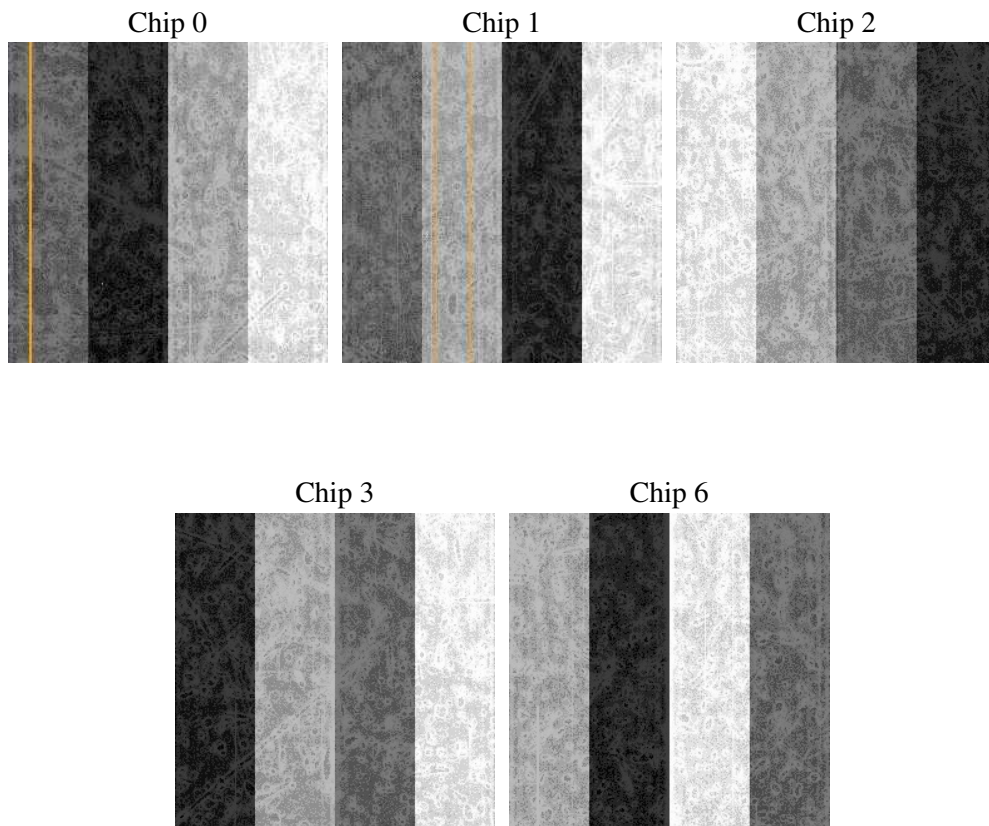
2 OBI

2.1 OBI

2.1.1 Images



2.1.2 Bias



2.1.3 Parameters

obi_num	1
ascdsver	7.6.7
caldbver	3.2.1
date	2006-02-25T11:58:12
revision	2

sched_exp_time	23400.000000
ontime	23450.800972044
ontime0	23457.082952529
ontime1	23453.941972286
ontime2	23453.941972286
ontime3	23450.800972044
ontime6	23457.082952529
l1events	752186

2.1.4 Events

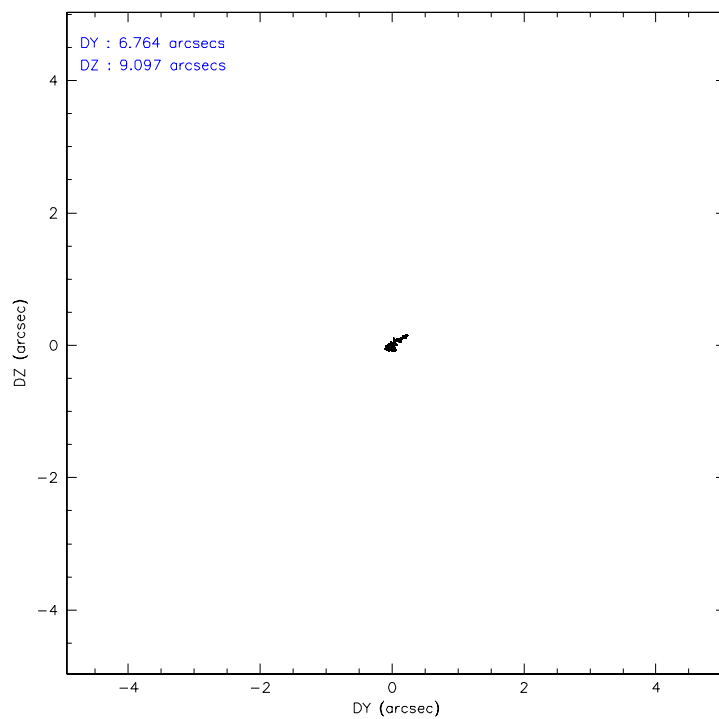
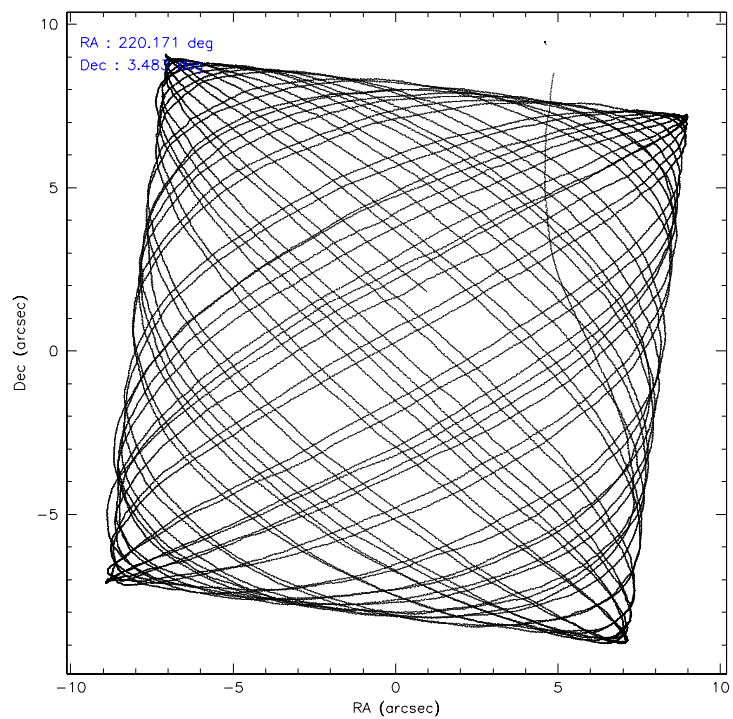
	ccd 0	ccd 1	ccd 2	ccd 3	ccd 6
level 1 events	138579	145725	161923	158381	147578
rejected events	119266	120163	139898	131383	131639
rejected %	86%	82%	86%	82%	89%

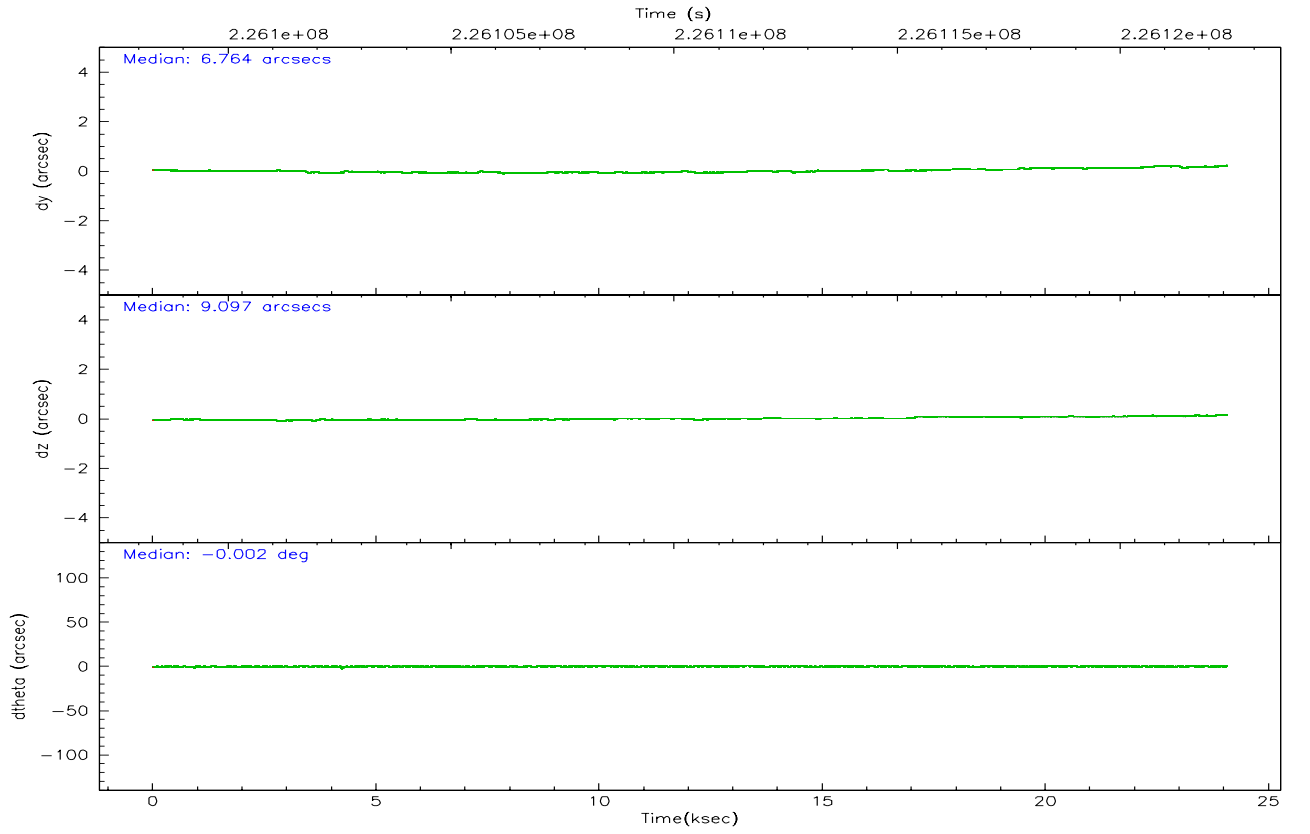
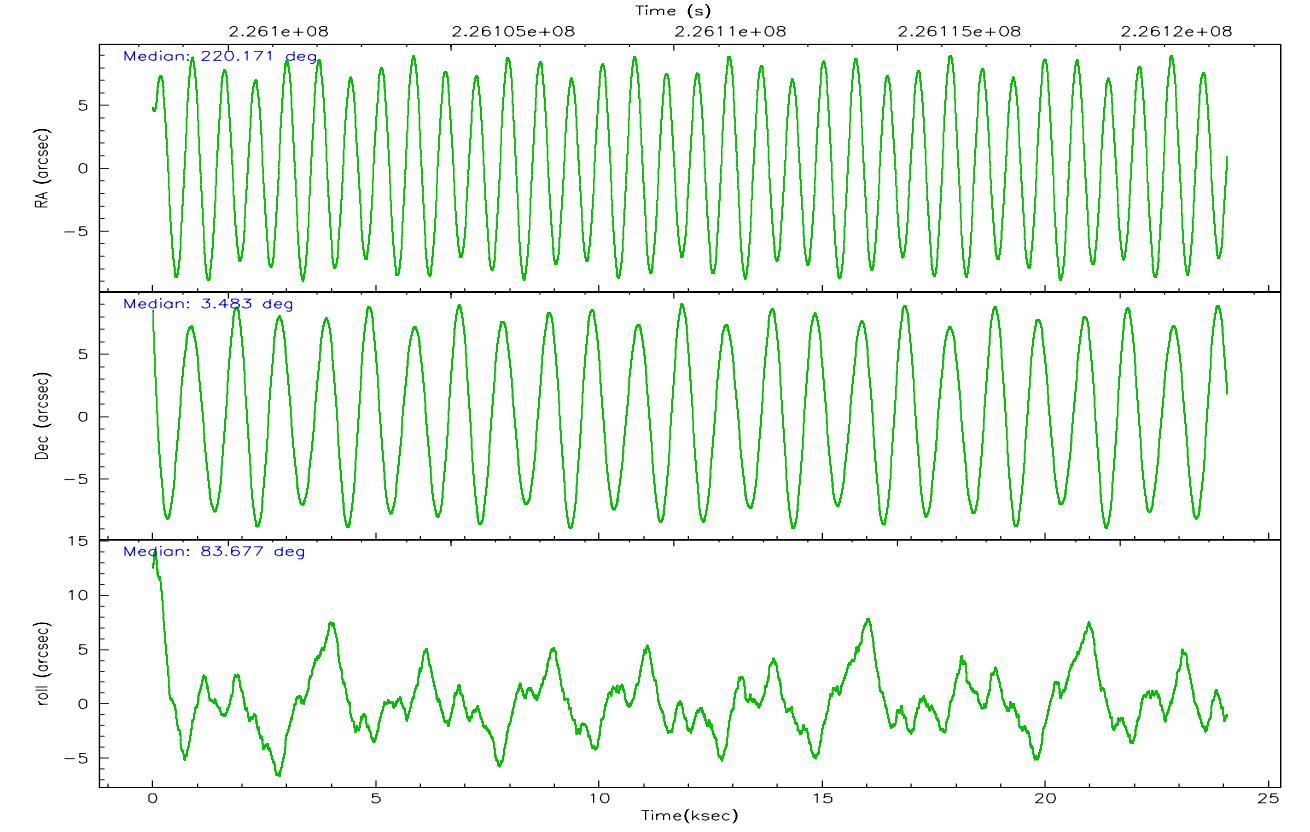
	ccd 0	ccd 1	ccd 2	ccd 3	ccd 6
grade 0 events	9149	13606	11586	15920	5967
	6%	9%	7%	10%	4%
grade 1 events	100	112	101	146	66
	0%	0%	0%	0%	0%
grade 2 events	3753	4337	3938	4223	3319
	2%	2%	2%	2%	2%
grade 3 events	1821	2059	1790	2010	1727
	1%	1%	1%	1%	1%
grade 4 events	1699	2015	1849	1904	1725
	1%	1%	1%	1%	1%
grade 5 events	5265	5548	4953	5848	5825
	3%	3%	3%	3%	3%
grade 6 events	2893	3553	2866	2945	3201
	2%	2%	1%	1%	2%
grade 7 events	113899	114495	134840	125385	125748
	82%	78%	83%	79%	85%

2.2 Compared Parameters

Parameter	Planned	Actual	Parameter	Planned	Actual
Instrument	ACIS	ACIS	Obspar format version number	6	6
Detector	ACIS-01236	ACIS-01236	Obspar file type	PREDICTED	ACTUAL
Grating	NONE	NONE	Obspar update status	NONE	UPDATED
Data mode	VFAINT	VFAINT	On-chip summing requested	N	N
Observation mode	POINTING	POINTING	Subarray requested	NONE	NONE
Pointing RA	220.182220	220.1710935482728	Alternating exposures requested	N	N
Pointing Dec	3.458061	3.483090506582318	Primary exposure time	0.000000	3.1
Pointing Roll	83.472476	83.68183482150695			
SIM focus pos (mm)	-0.782348	-0.7809083437167272			
SIM defocus (mm)	0	0.001439871863259334			
SIM translation stage pos (mm)	-233.592463	-233.5874344608287			
SIM translation stage offset (mm)	0	-0.005018542100998502			
Observation start time	226098998.184000	226097828.24573			
Observation start date	2005-03-01T21:15:34	2005-03-01T20:57:08			
Observation end time	226122398.184000	226122700.89686			
Observation end date	2005-03-02T03:45:34	2005-03-02T03:51:40			
Read mode	TIMED	TIMED			

2.3 Aspect



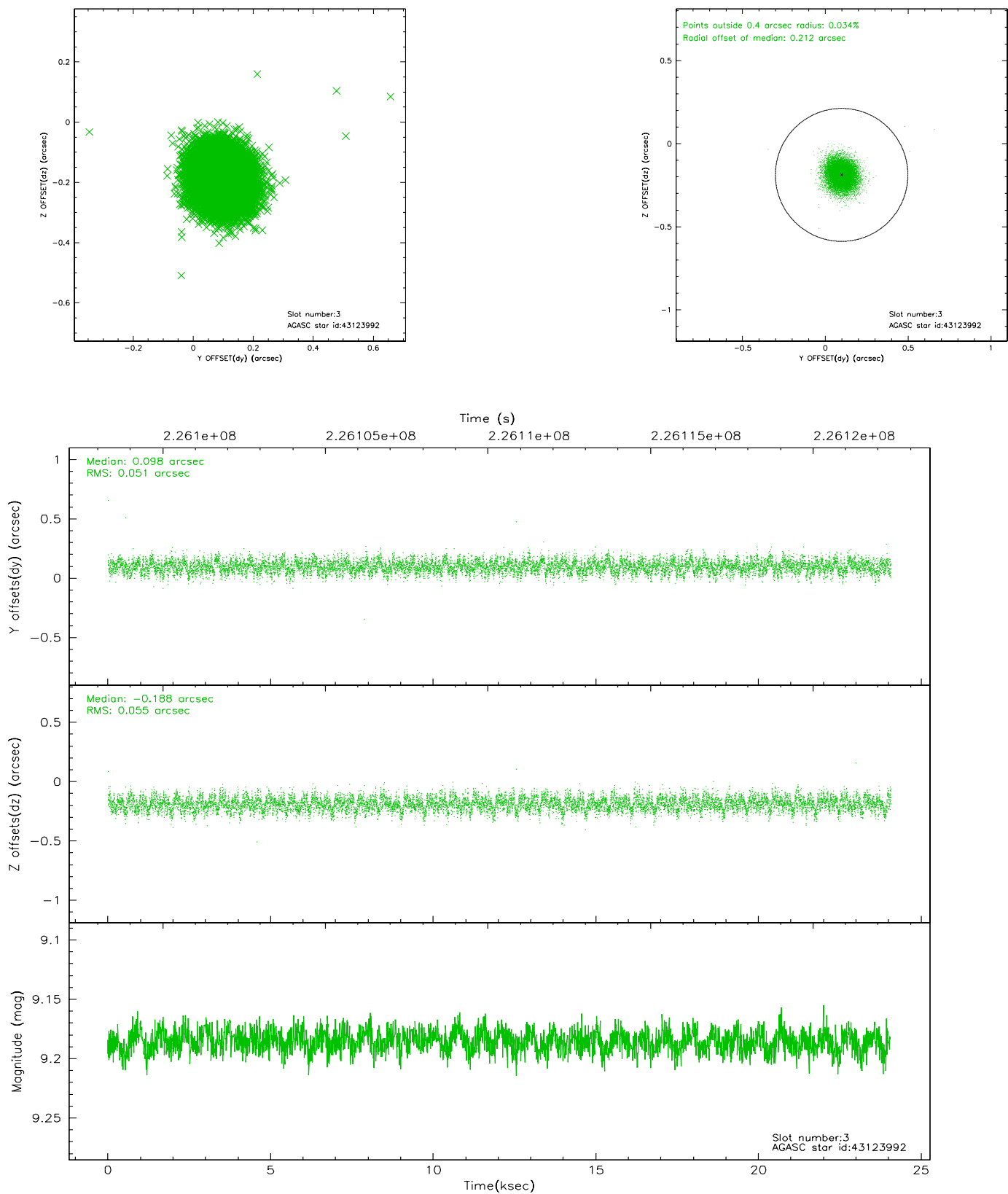


Slot Statistics

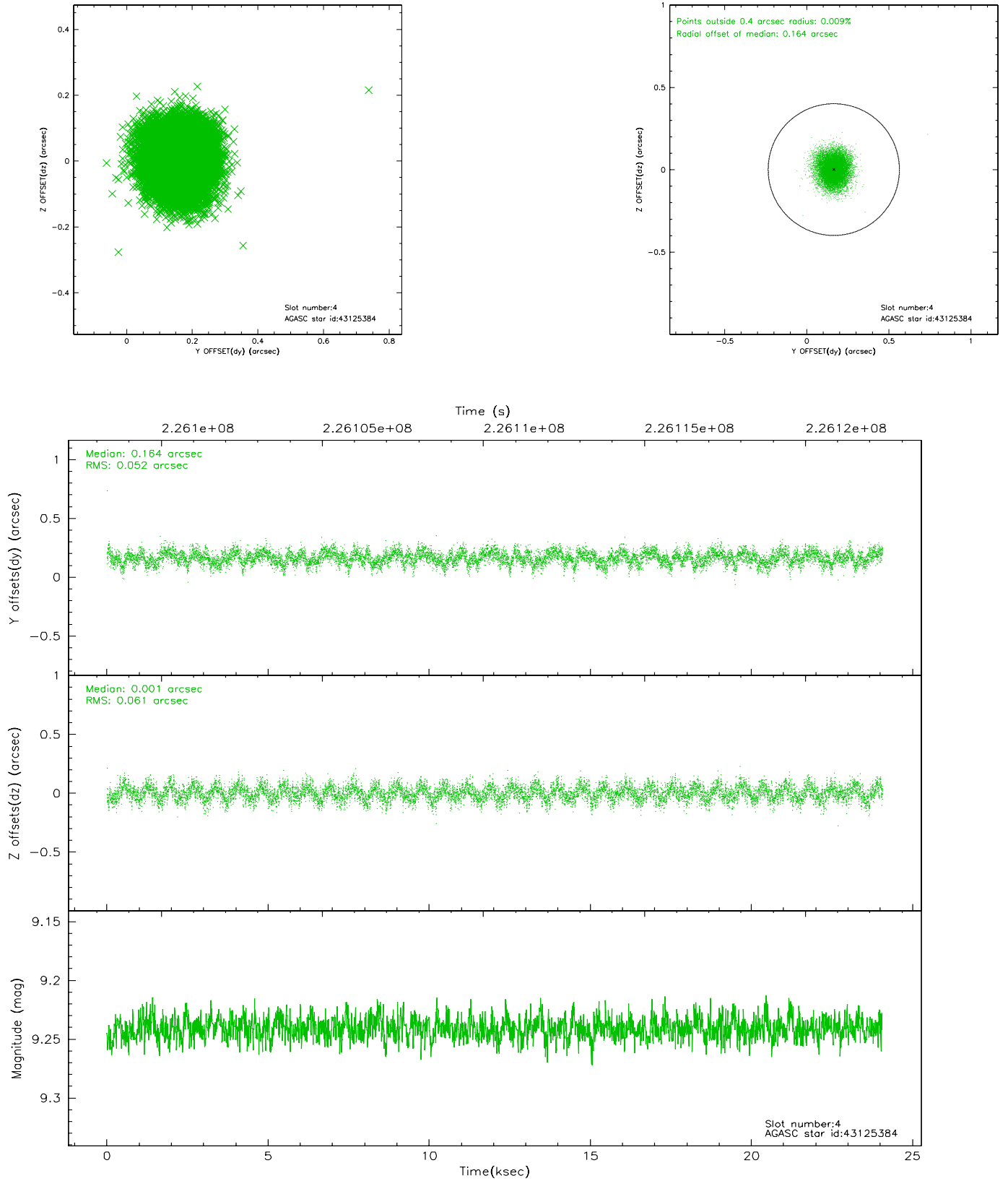
slot	status	id	mag	n_pts	med_dy	med_dz	dr1	dr2	ra	dec	mean_y	mean_z
0	FID	ACIS-I-1	7.25	5872	-0.017	0.062	0.006	0.011	0.000000	0.000000	932.89	-832.49
1	FID	ACIS-I-5	7.23	5872	-0.127	0.021	0.006	0.011	0.000000	0.000000	-1815.26	1064.88
2	FID	ACIS-I-6	7.26	5872	0.053	-0.012	0.007	0.012	0.000000	0.000000	398.36	1709.51
3	GUIDE	43123992	9.19	11734	0.098	-0.188	0.080	0.127	220.073183	3.041813	-1532.82	218.91
4	GUIDE	43125384	9.24	11736	0.164	0.001	0.086	0.136	220.495715	3.039281	-1368.99	-1291.05
5	GUIDE	43126952	9.10	11737	-0.181	0.018	0.099	0.165	220.546654	3.938620	1867.97	-1103.37
6	GUIDE	43128056	8.96	11735	-0.093	0.042	0.088	0.138	220.702521	4.045739	2315.80	-1615.73
7	GUIDE	43125480	9.77	11723	0.017	0.126	0.109	0.181	220.758854	2.752621	-2286.07	-2348.91

2.4 Star Slots

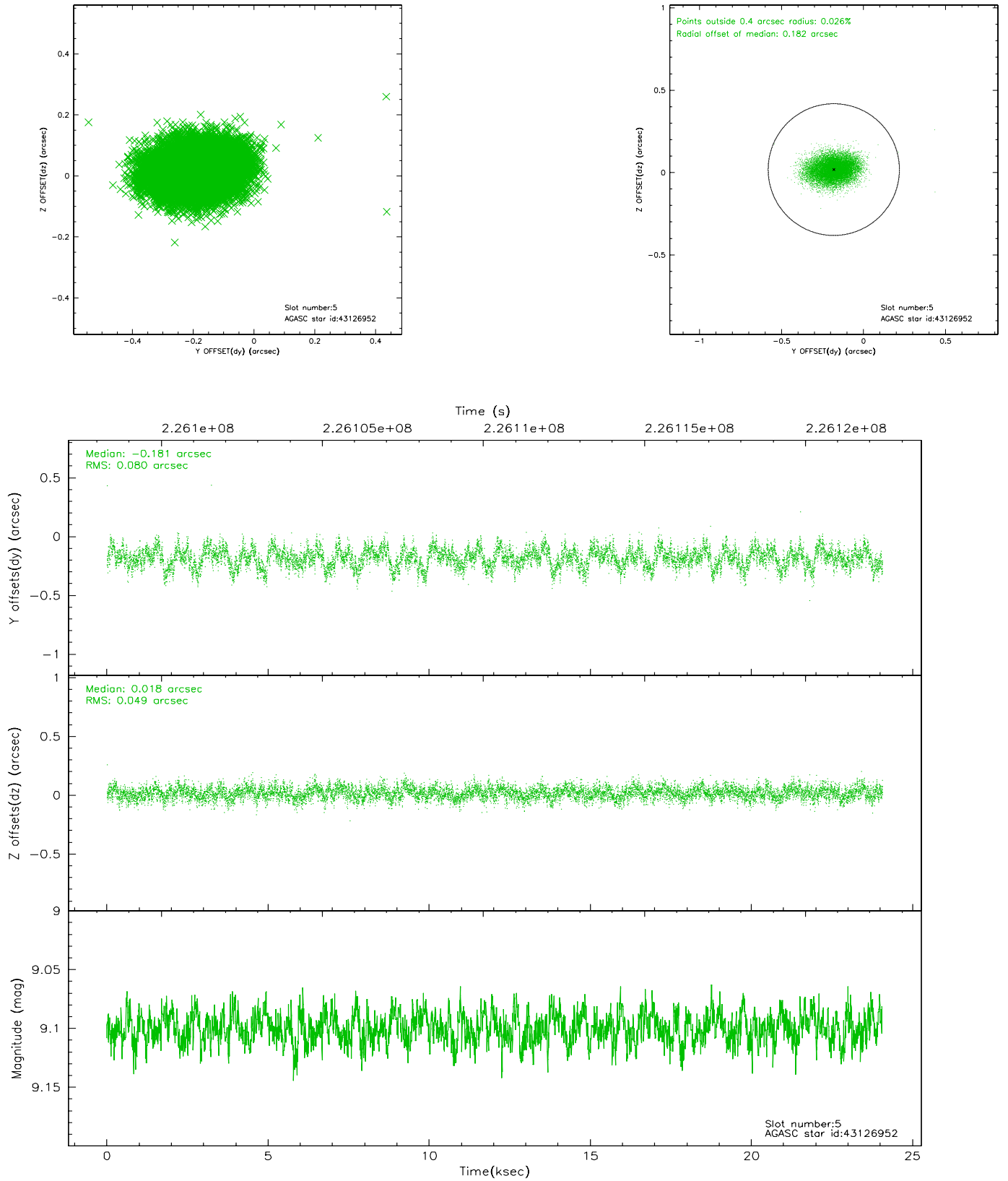
2.4.1 Slot 3



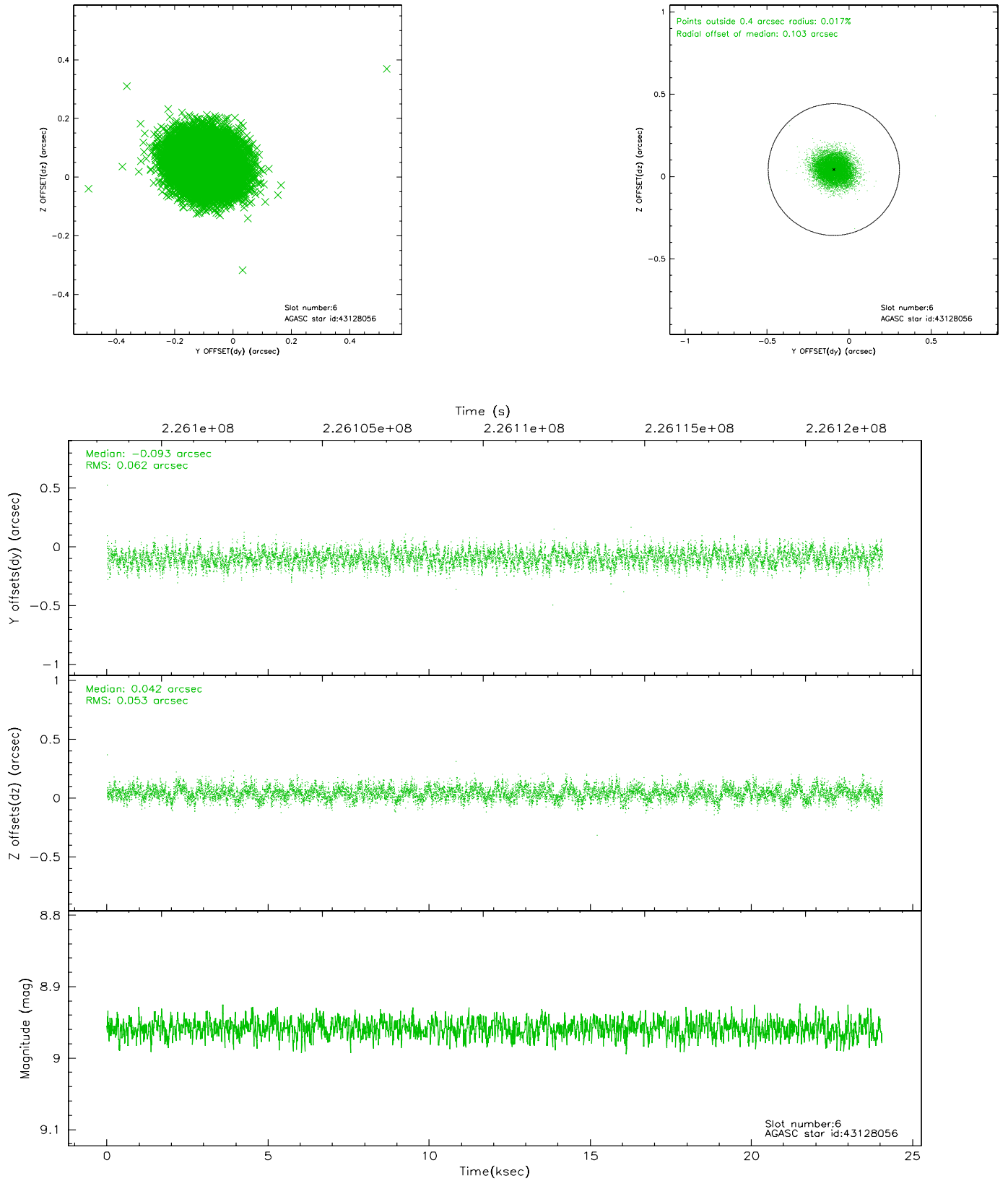
2.4.2 Slot 4



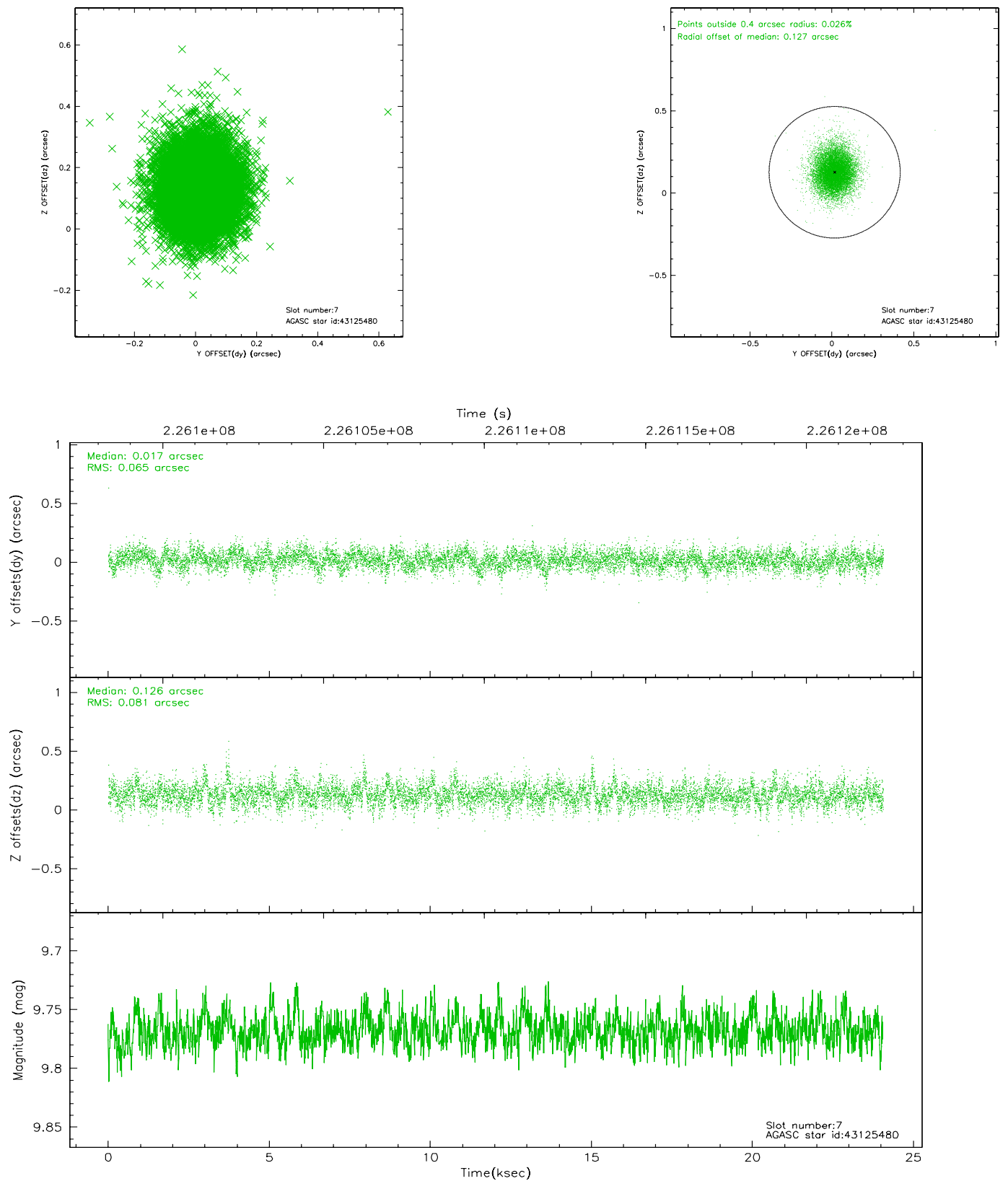
2.4.3 Slot 5



2.4.4 Slot 6

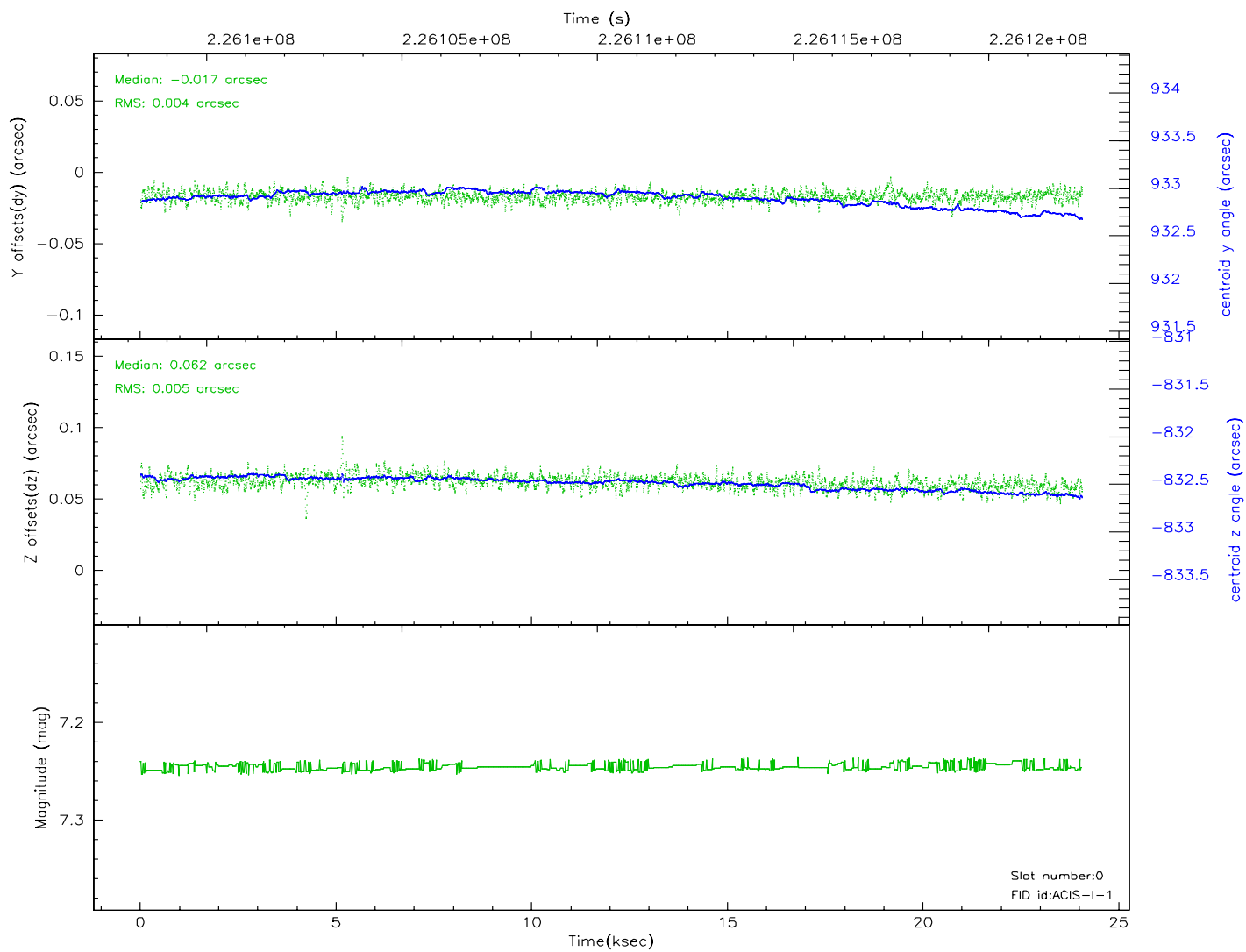
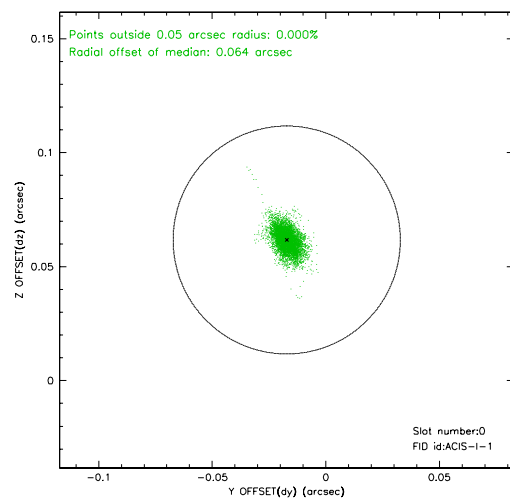
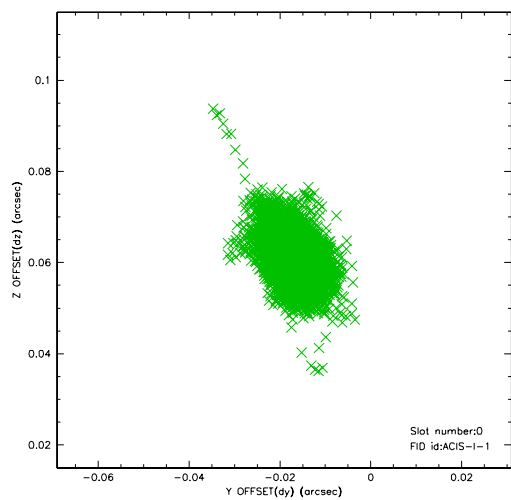


2.4.5 Slot 7

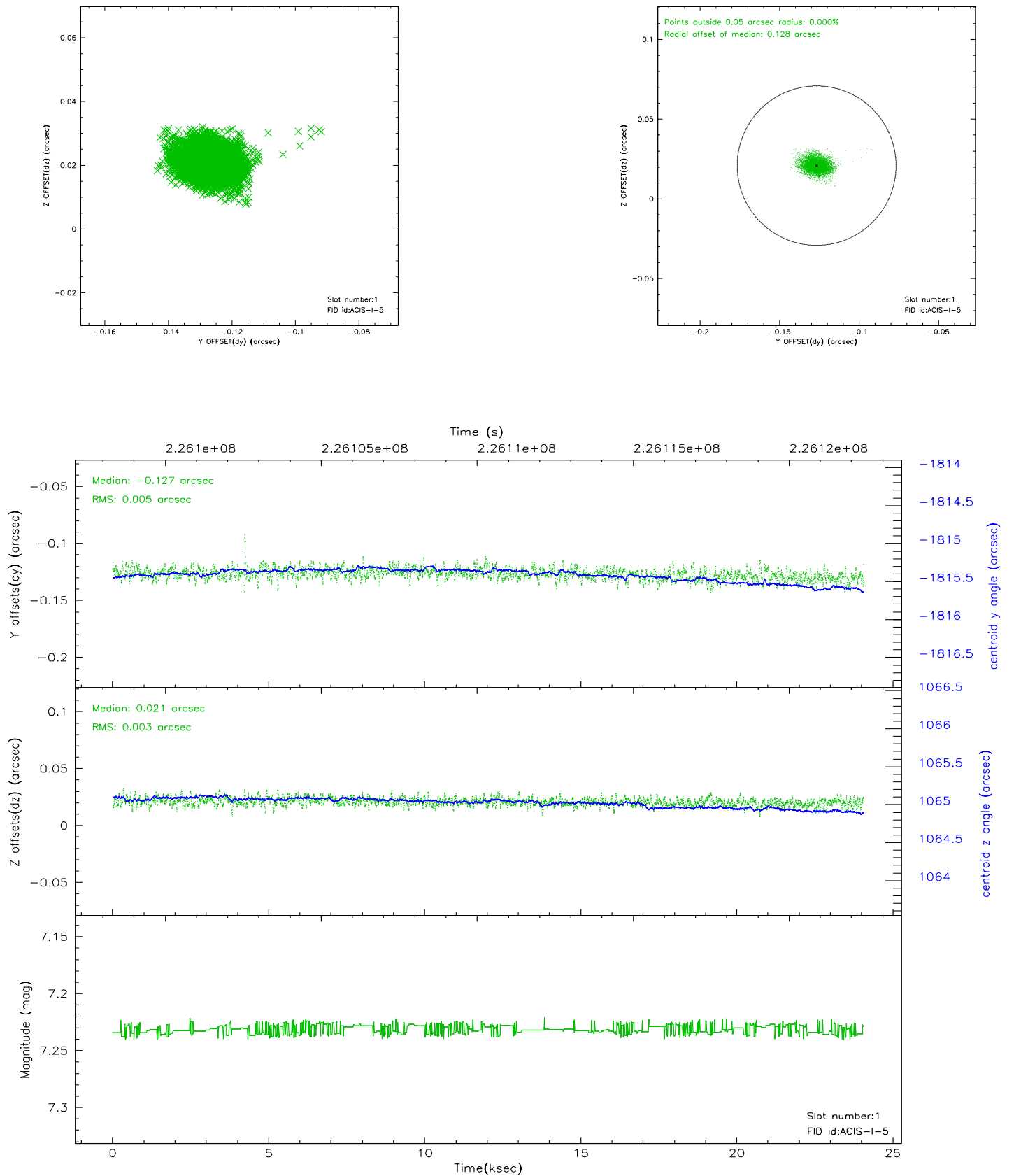


2.5 FID Slots

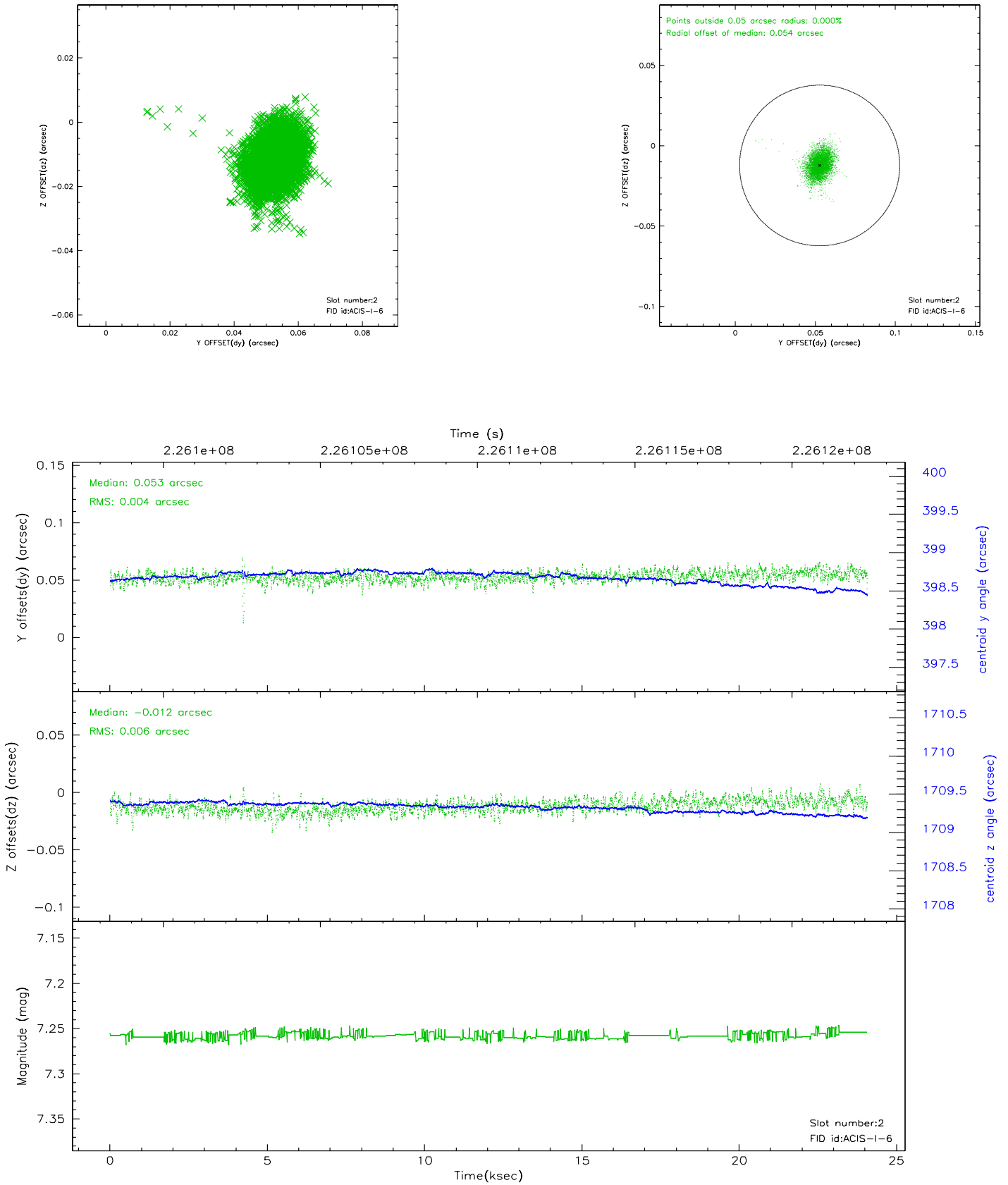
2.5.1 Slot 0



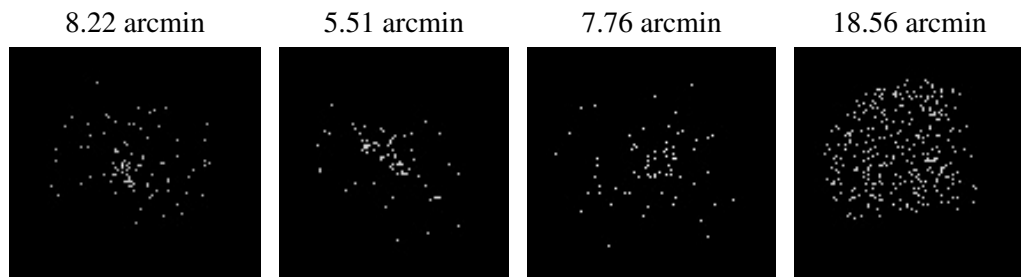
2.5.2 Slot 1



2.5.3 Slot 2



3 Point Sources



A Summary

A.1 Status

V&V Scientist	Doug Morgan
V&V Date (YYYY-MM-DD)	2006.02.26
V&V Edition	1
V&V Disposition and Status	OK
V&V Charge Time	23.44831

A.2 Comments