

V&V Reference Report

L2 ASCDS Version : 10.9.1

Observation 4892 - L2 Version 4
Chandra X-Ray Center

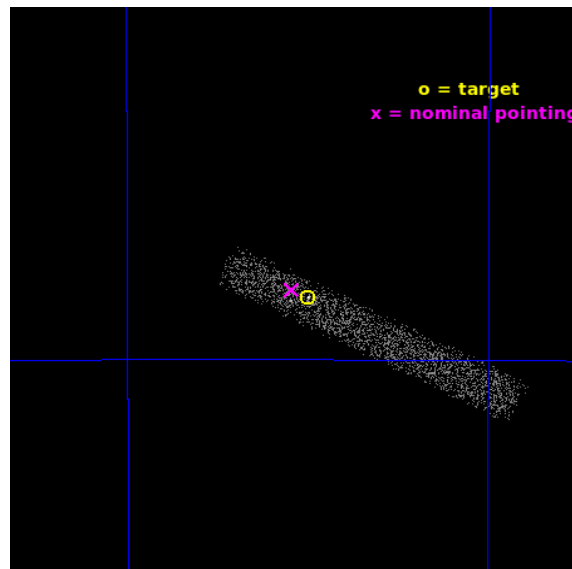
L2 Processing Date : Sep 24 2020

Contents

1	Front	2
2	OBI	3
2.1	OBI	3
2.1.1	Images	3
2.1.2	Bias	3
2.1.3	Parameters	4
2.1.4	Events	4
2.2	Compared Parameters	5
2.3	Aspect	6
2.4	Star Slots	9
2.4.1	Slot 3	9
2.4.2	Slot 4	10
2.4.3	Slot 5	11
2.4.4	Slot 6	12
2.4.5	Slot 7	13
2.5	FID Slots	14
2.5.1	Slot 0	14
2.5.2	Slot 1	15
2.5.3	Slot 2	16
A	Summary	17
A.1	Status	17
A.2	Comments	17

1 Front

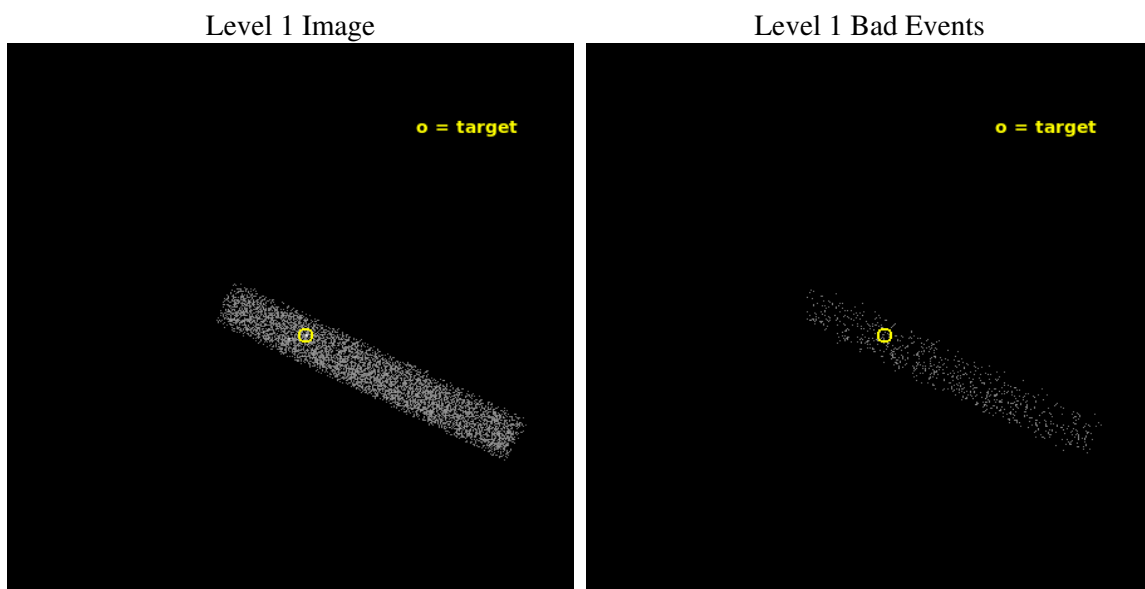
seq_num	700974	Sequence number
obs_id	4892	Observation id
title	Continuing a Flux-limited Survey for X-ray Emission from Radio Jets	
observer	Herman Marshall	Principal investigator
object	QSO B1251-713	Source name
dtcycle	0	
cycle	P	events from which exps? Prim/Second/Both
ra_targ	193.749583	Observer's specified target RA [deg]
dec_targ	-71.638444	Observer's specified target Dec [deg]
ra_nom	193.77197208257	Nominal RA [deg]
dec_nom	-71.635131806966	Nominal Dec [deg]
roll_nom	26.399814135744	Nominal Roll [deg]
revision	4	Processing version of data
ontime	6587.6000981331	Sum of GTIs [s]
livetime	5974.6055669627	Livetime [s]
ontime7	6587.6000981331	Sum of GTIs [s]
l2events	3451	Number of level 2 events



2 OBI

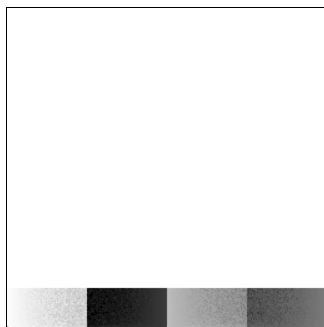
2.1 OBI

2.1.1 Images



2.1.2 Bias

Chip 7



2.1.3 Parameters

obi_num	0	Obi number	sched_exp_time	6406.000000	[s] Scheduled observation exposure time
ascdsver	10.9.1	Processing system revision	ontime	6587.6000981331	Sum of GTIs [s]
caldsver	4.9.2	 	ontime7	6587.6000981331	Sum of GTIs [s]
date	2020-09-24T18:27:37	Date and time of file creation	l1events	8749	Number of level 1 events
revision	4	Processing version of data			

2.1.4 Events

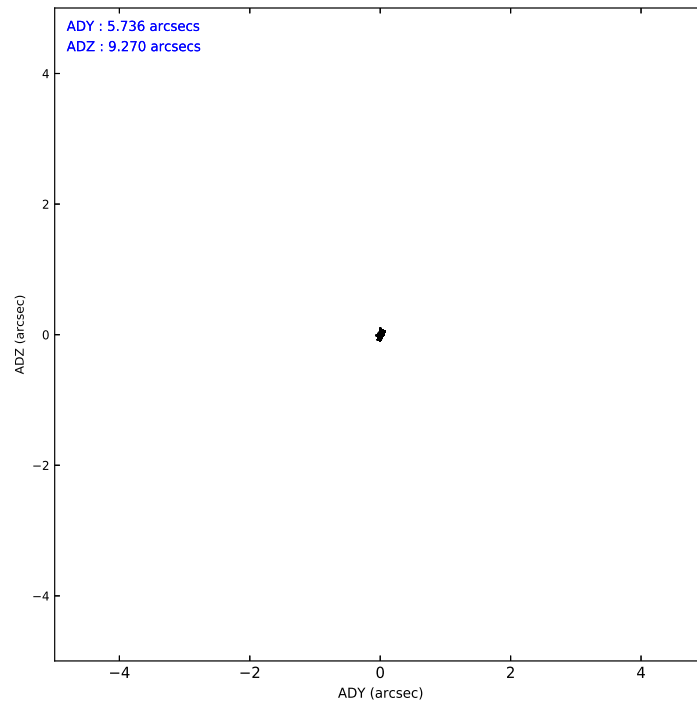
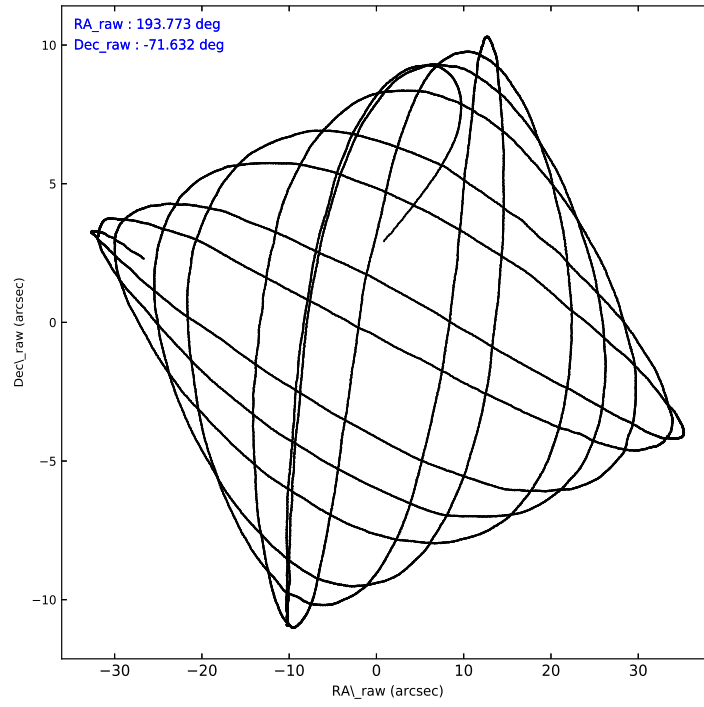
	ccd 7
level 1 events	8749
rejected events	5023
rejected %	57%

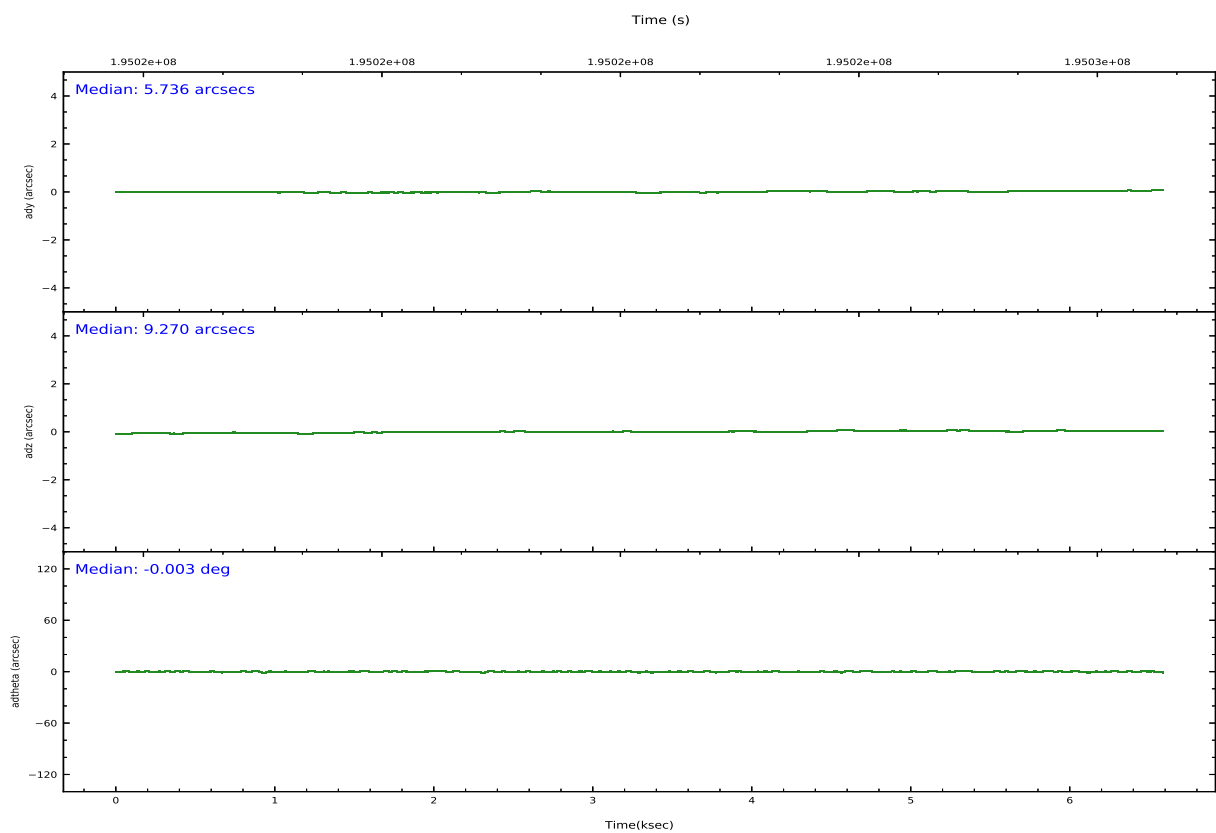
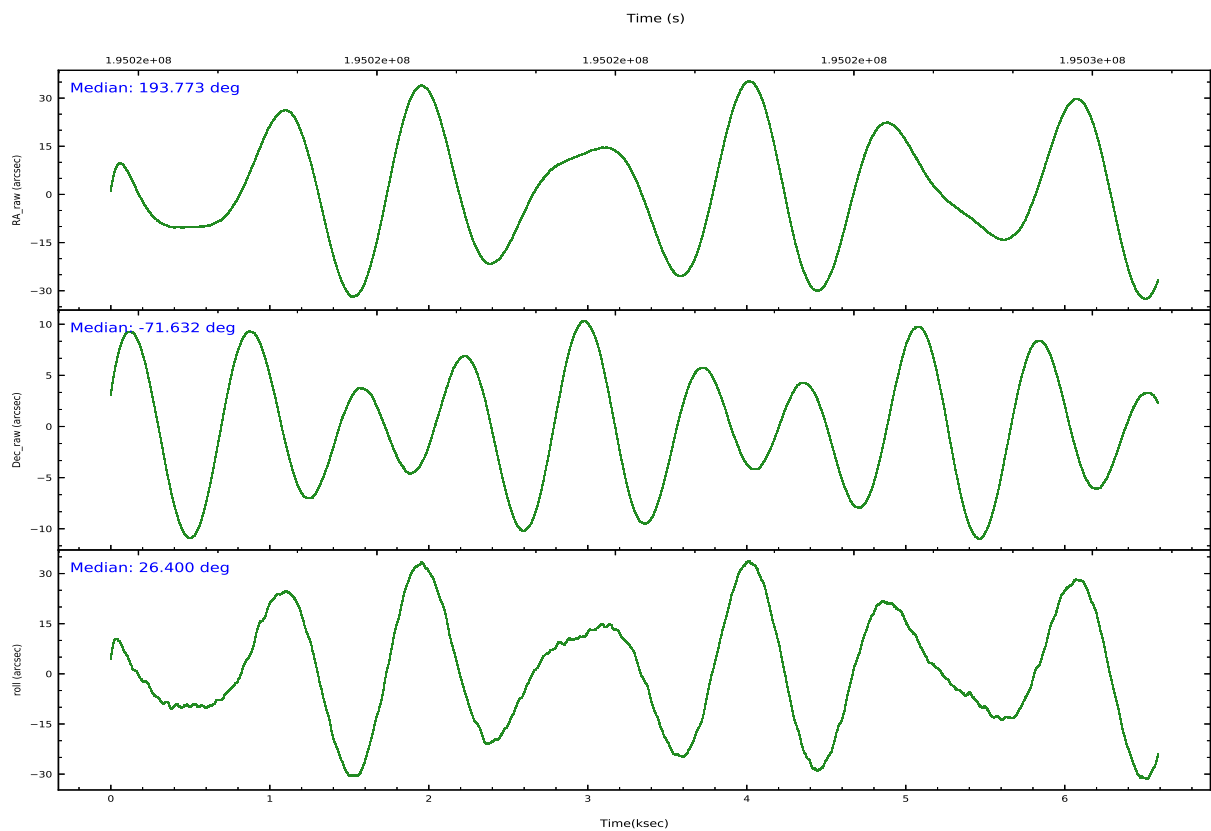
	ccd 7
grade 0 events	401
	4%
grade 1 events	6
	0%
grade 2 events	776
	8%
grade 3 events	502
	5%
grade 4 events	488
	5%
grade 5 events	753
	8%
grade 6 events	1958
	22%
grade 7 events	3865
	44%

2.2 Compared Parameters

Parameter	Planned	Actual	Parameter	Planned	Actual
Instrument	ACIS	ACIS	Obspar version number	8	8
Detector	ACIS-7	ACIS-7	Obspar file type	PREDICTED	ACTUAL
Grating	NONE	NONE	Obspar update status	NONE	UPDATED
Data mode	FAINT	FAINT	Number of optional ACIS chips dropped	0	0
Observation mode	POINTING	POINTING	On-chip summing requested	N	N
[deg] Pointing RA	193.726302	193.77197208257	Subarray requested	CUSTOM	1/8
[deg] Pointing Dec	-71.654869	-71.635131806966	Subarray start row	1	1
[deg] Pointing Roll	26.202889	26.399814135744	Subarray row count	128	128
[mm] SIM focus pos	-0.684267	-0.6828225247311905	Alternating exposures requested	N	N
[mm] SIM defocus	0	0.001444936568705701	[s] Primary exposure time	0.000000	0.4
[mm] SIM translation stage pos	-178.632523	-178.6345592299333			
[mm] SIM translation stage offset	-11.5	-11.49796335307448			
[s] Observation start time (MET)	195020507.184000	195018311.91014			
Observation start date	2004-03-07T04:20:43	2004-03-07T03:45:11			
[s] Observation end time (MET)	195026913.184000	195027495.39805			
Observation end date	2004-03-07T06:07:29	2004-03-07T06:18:15			
Read mode	TIMED	TIMED			

2.3 Aspect



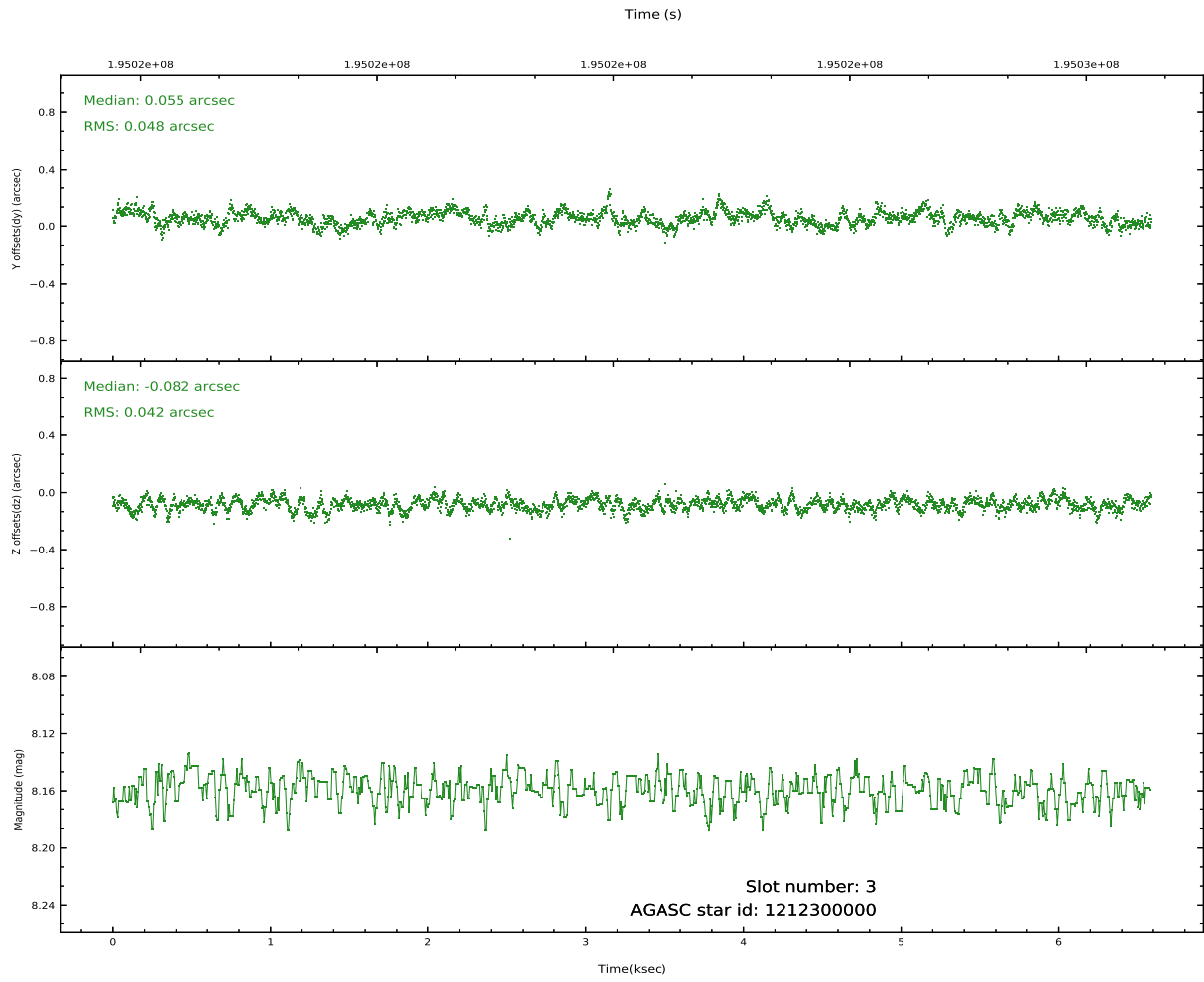
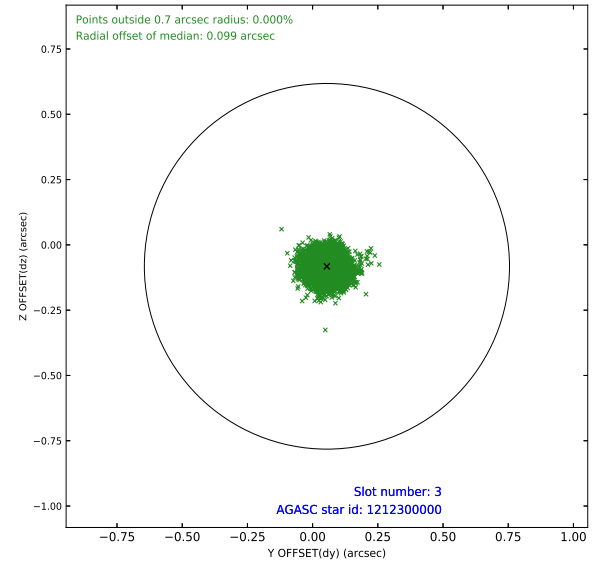
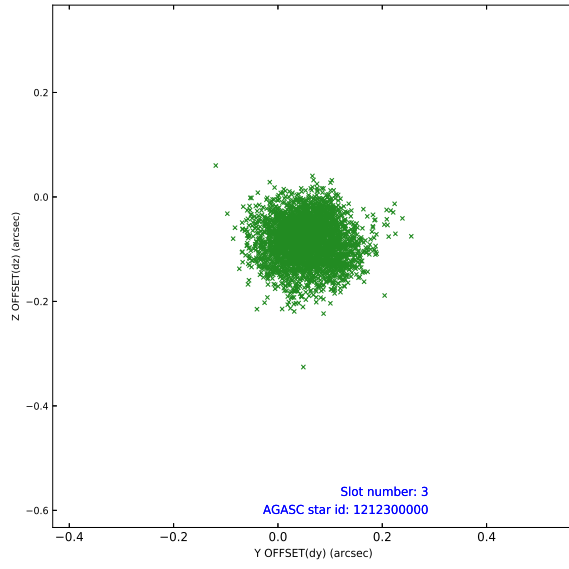


Slot Statistics

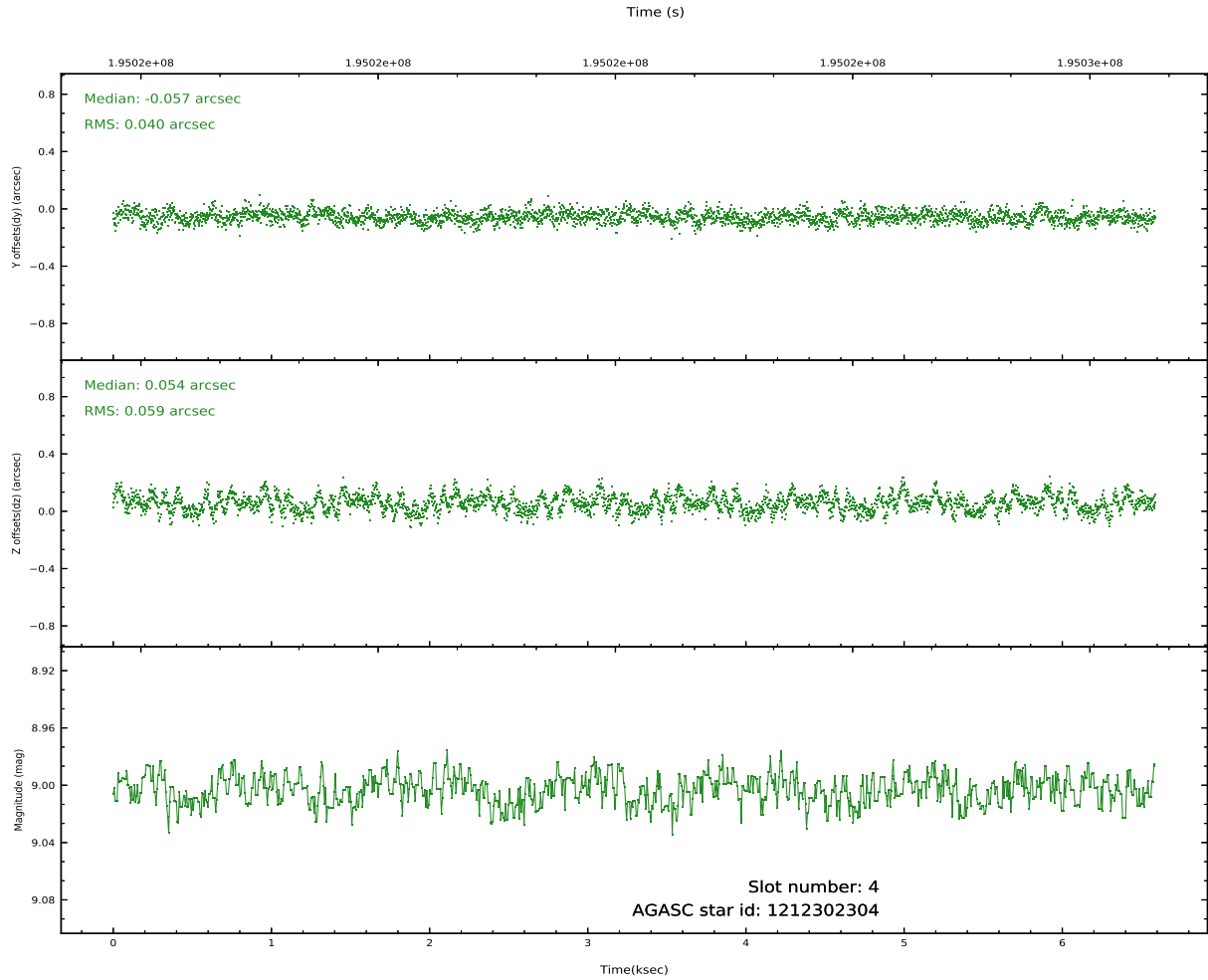
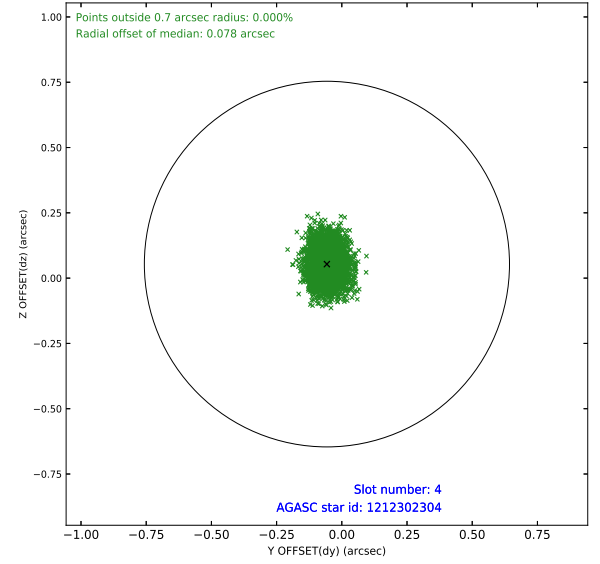
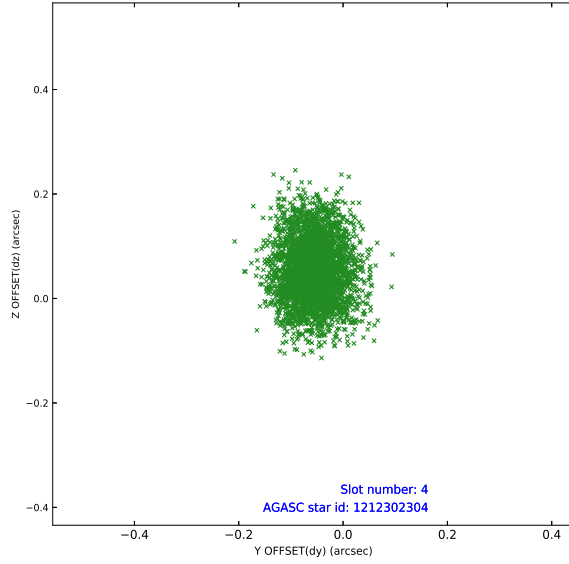
pt	status	used	id	mag	n_pts	frac_pts	med_dy	med_dz	dr1	dr2	ra	dec	mean_y	mea
0	FID		ACIS-S-1	7.19	1607	1.000	0.145	0.065	0.006	0.010	0.000000	0.000000	938.50	-1962
1	FID		ACIS-S-5	7.23	1608	1.000	-0.170	0.145	0.006	0.010	0.000000	0.000000	-1810.23	-66
2	FID		ACIS-S-6	7.43	1607	1.000	0.004	-0.199	0.007	0.011	0.000000	0.000000	403.07	578
3	GUIDE	used	1212300000	8.16	3214	1.000	0.055	-0.082	0.068	0.108	192.377853	-71.731473	-1494.06	408
4	GUIDE	used	1212302304	9.00	3213	1.000	-0.057	0.054	0.077	0.124	194.558777	-72.021174	245.01	-1597
5	GUIDE	used	1212302584	7.57	3215	1.000	-0.005	-0.007	0.059	0.092	193.415639	-71.273508	283.81	1389
6	GUIDE	used	1212303784	8.53	3211	1.000	-0.057	-0.114	0.057	0.092	194.832846	-71.359799	1606.67	380
7	GUIDE	used	1212288568	9.37	3213	1.000	0.065	0.150	0.107	0.173	194.588403	-72.199074	-15.61	-2182

2.4 Star Slots

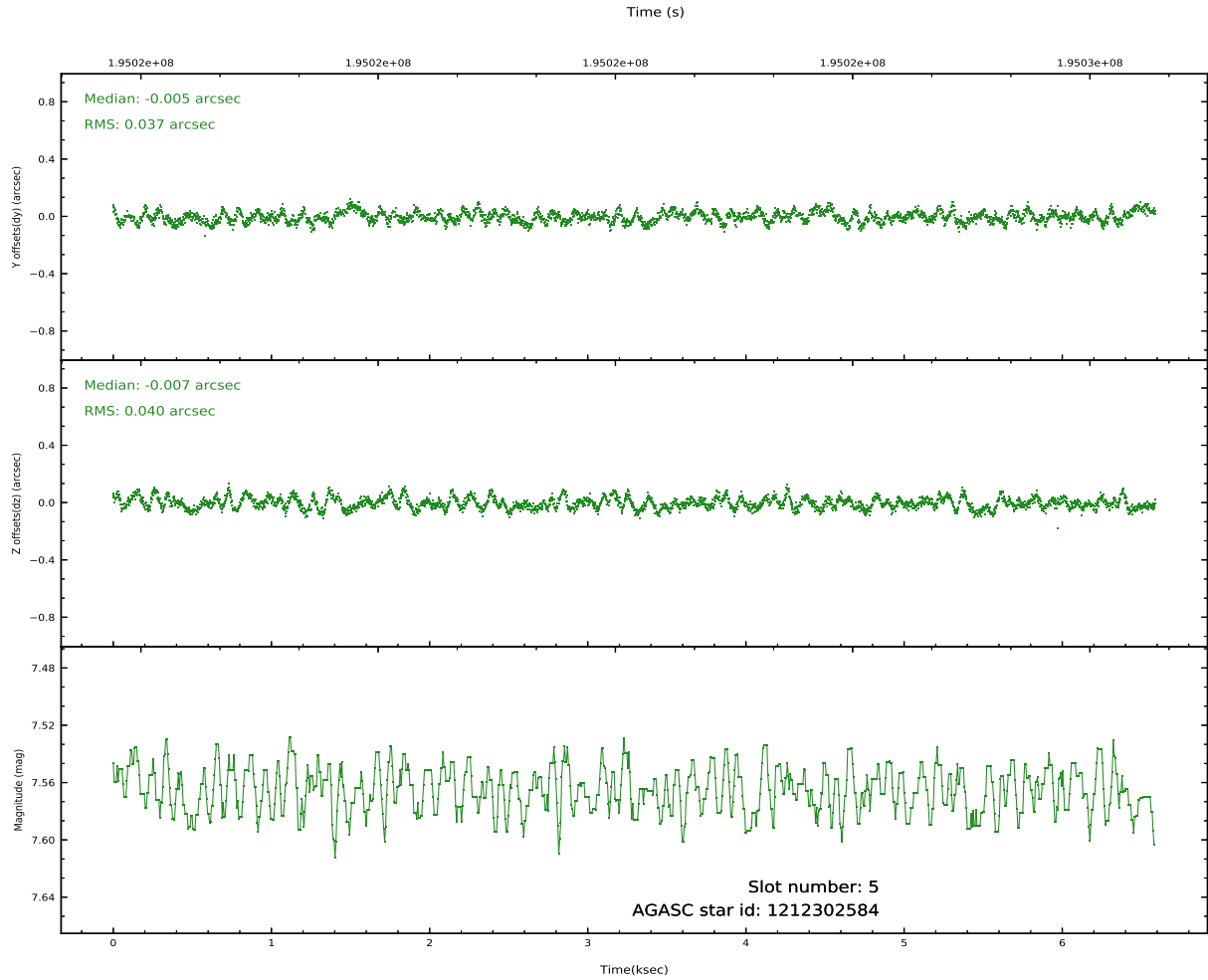
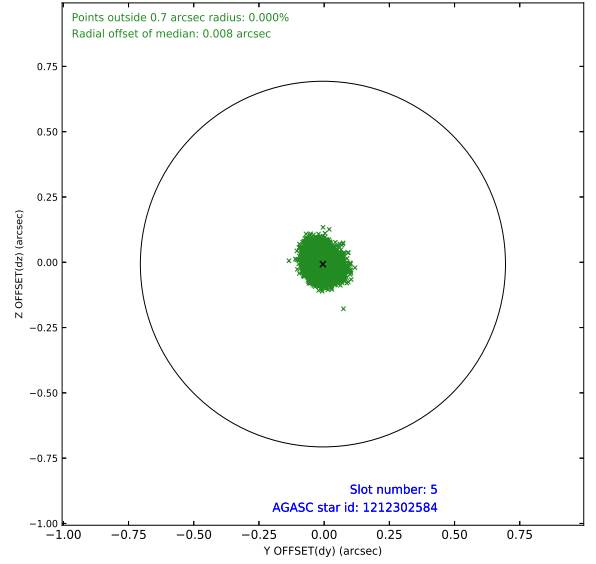
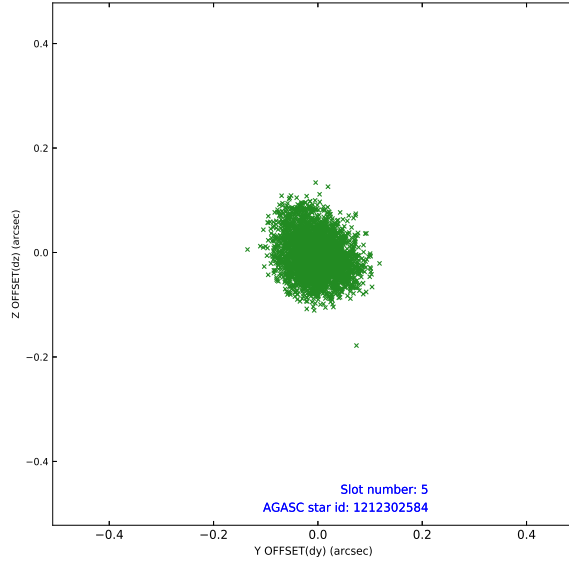
2.4.1 Slot 3



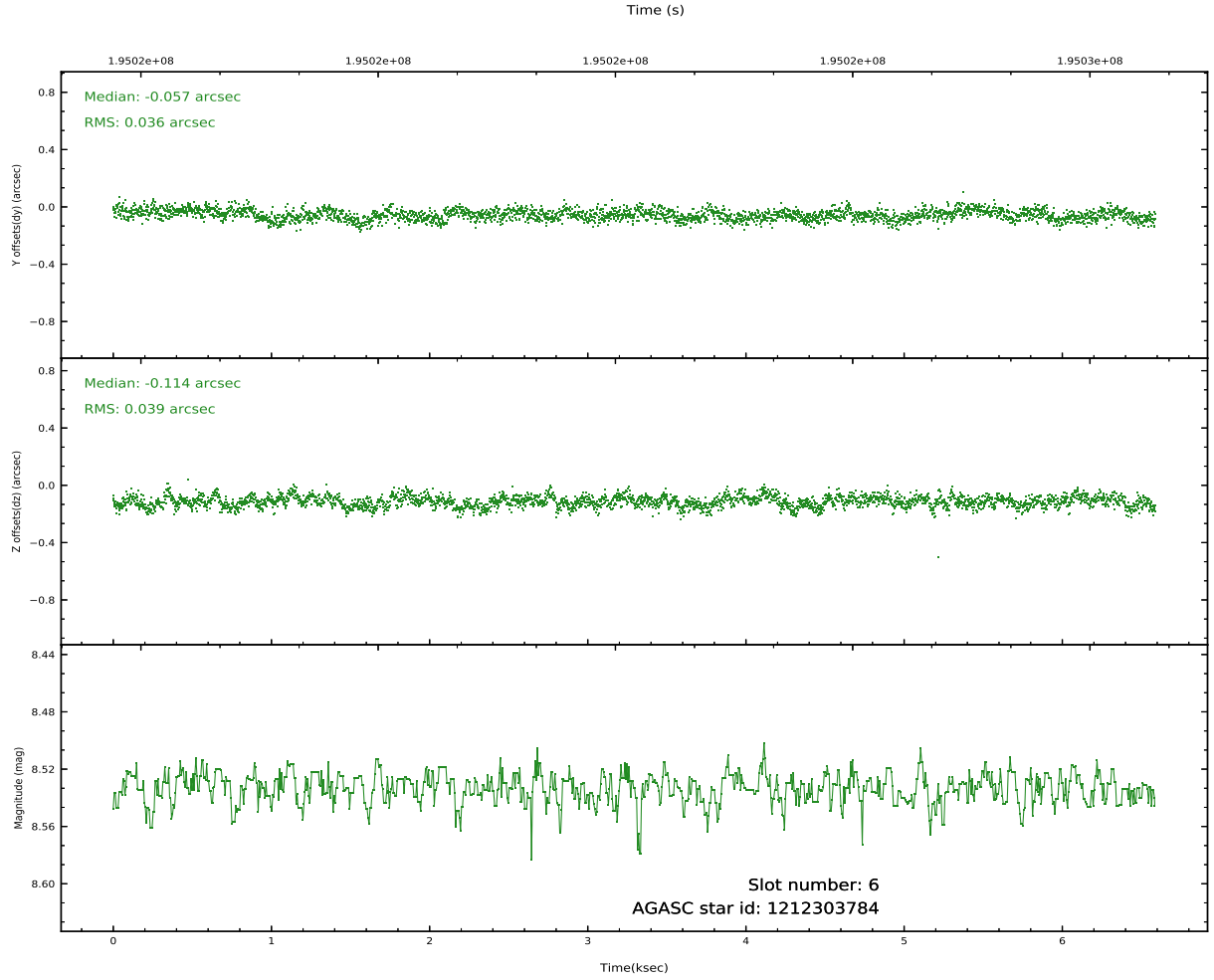
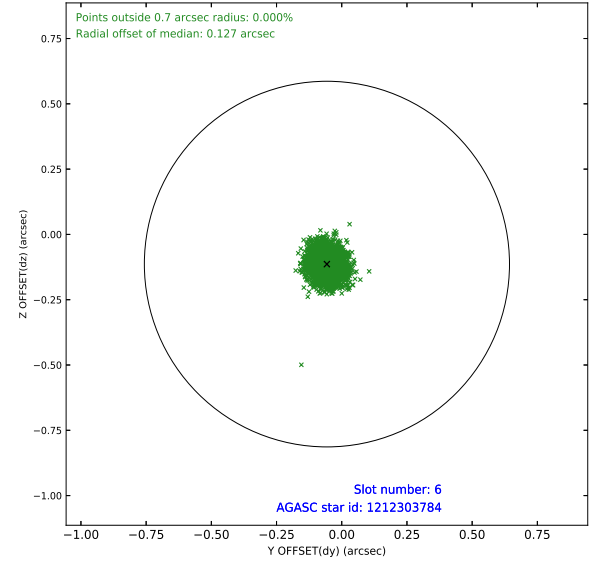
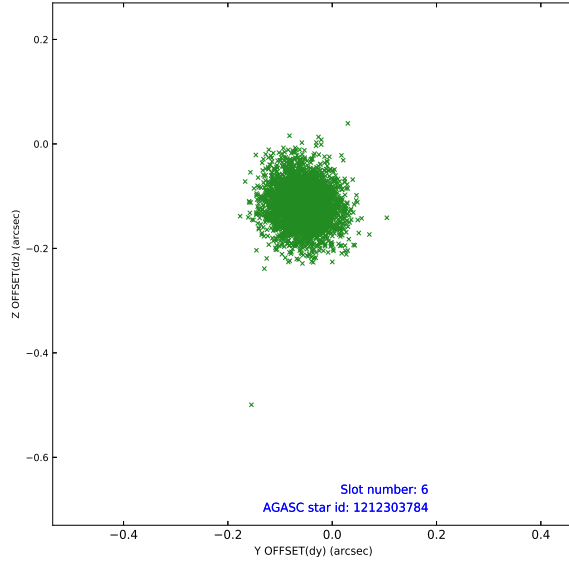
2.4.2 Slot 4



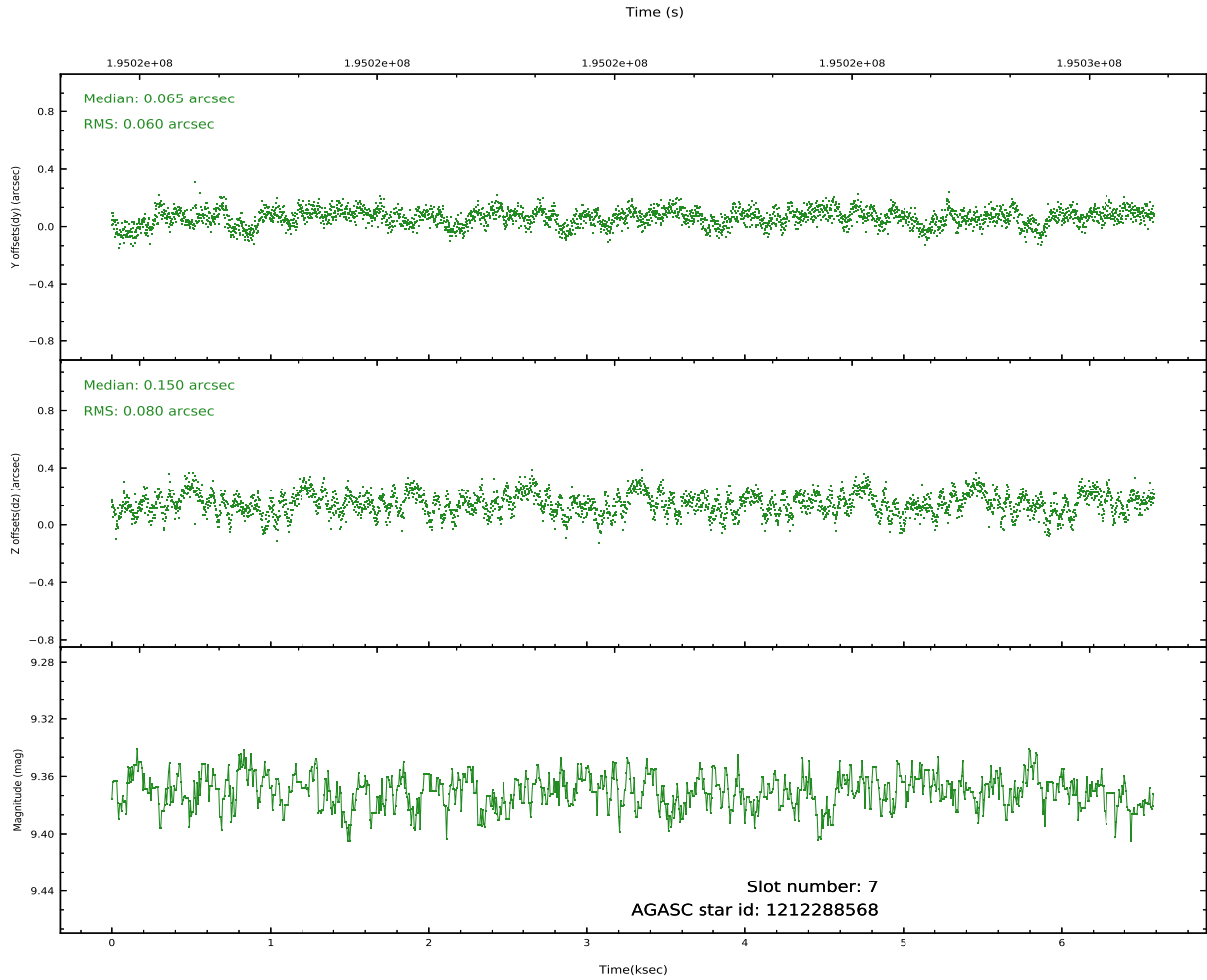
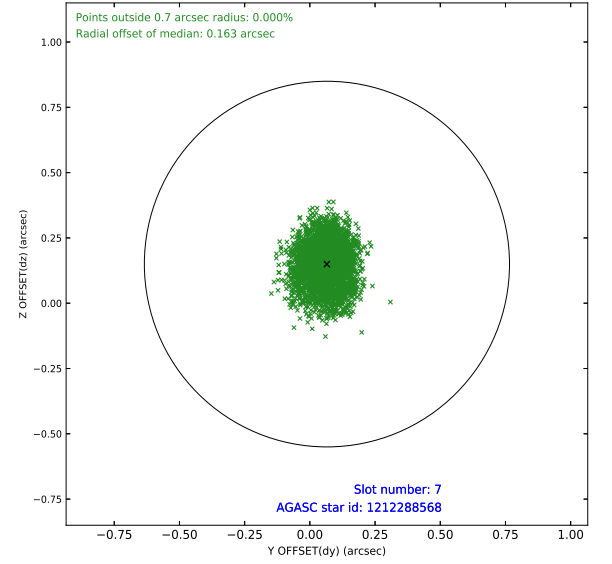
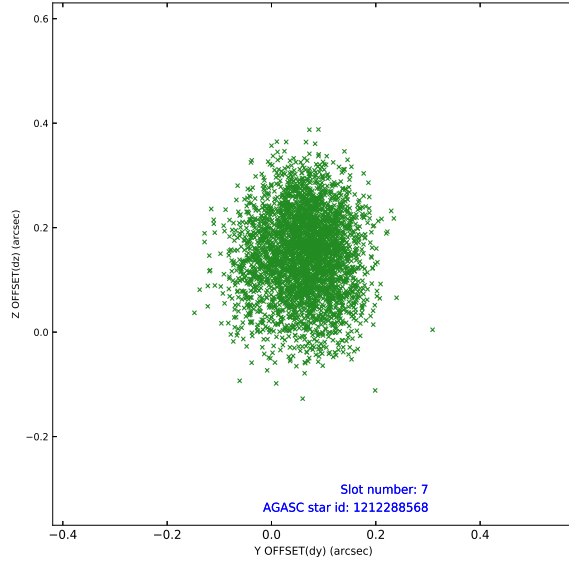
2.4.3 Slot 5



2.4.4 Slot 6

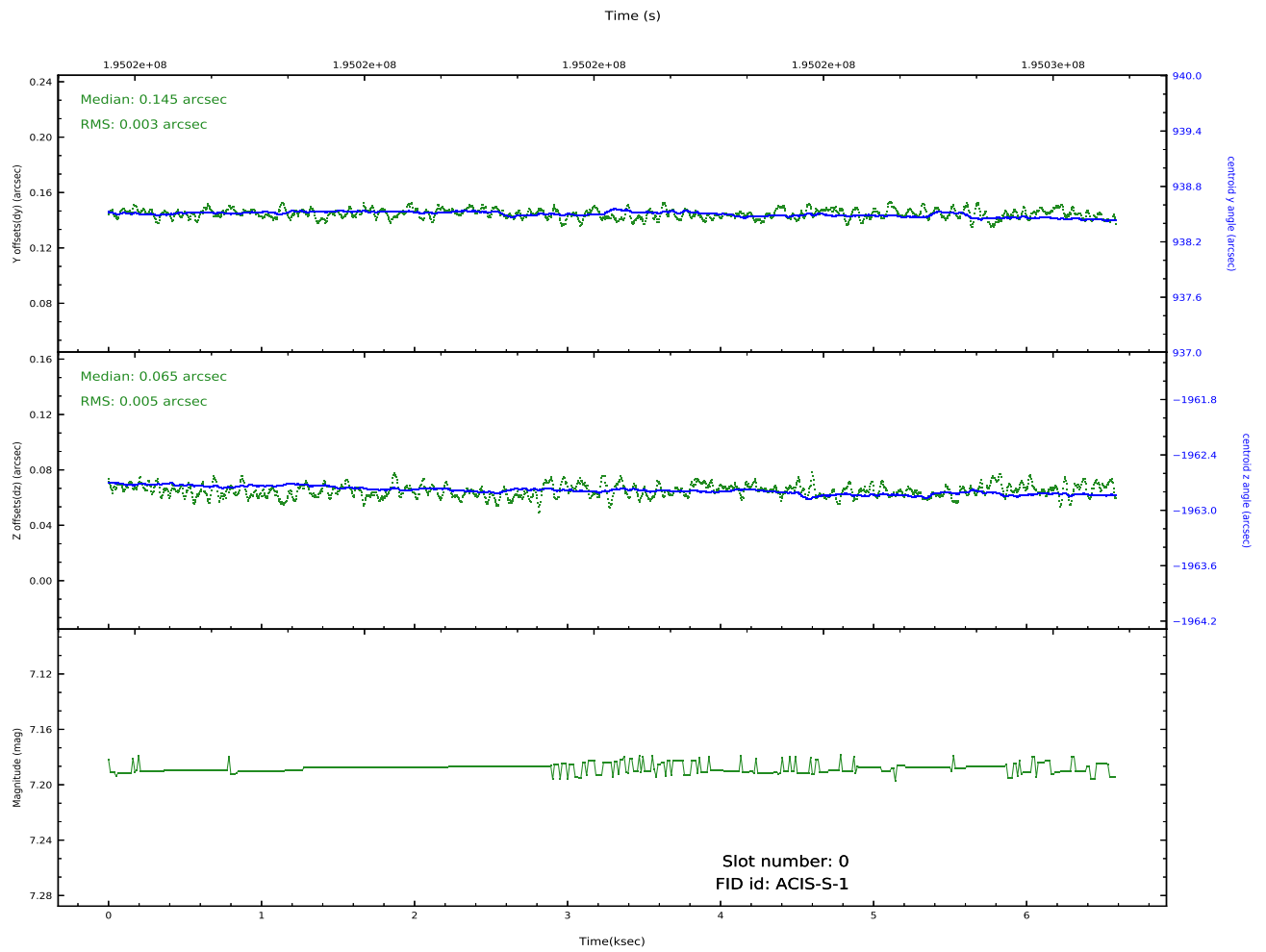
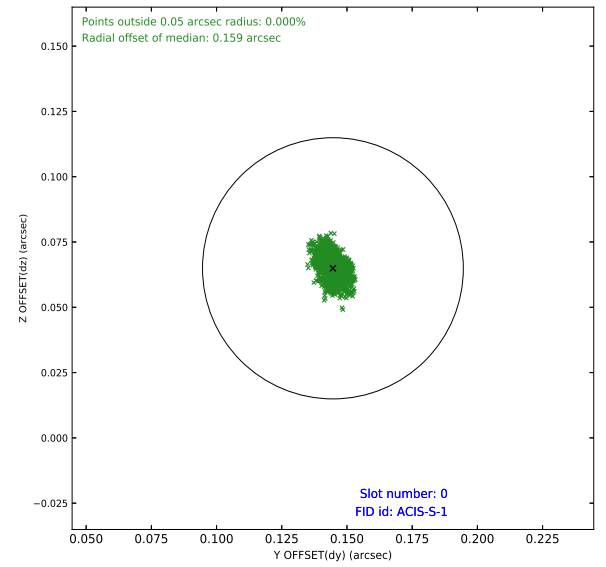
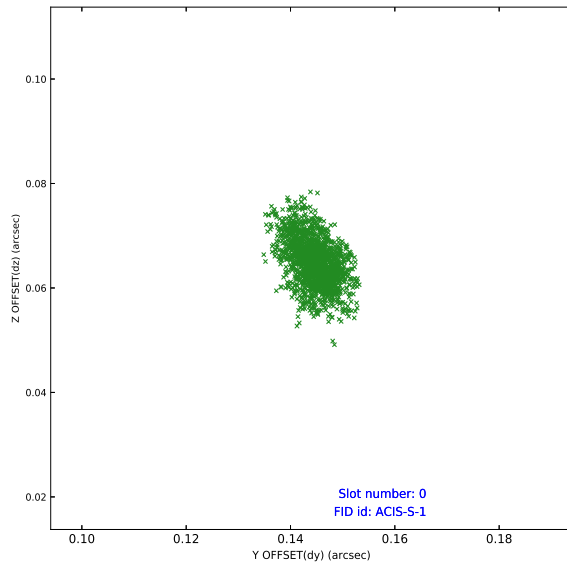


2.4.5 Slot 7

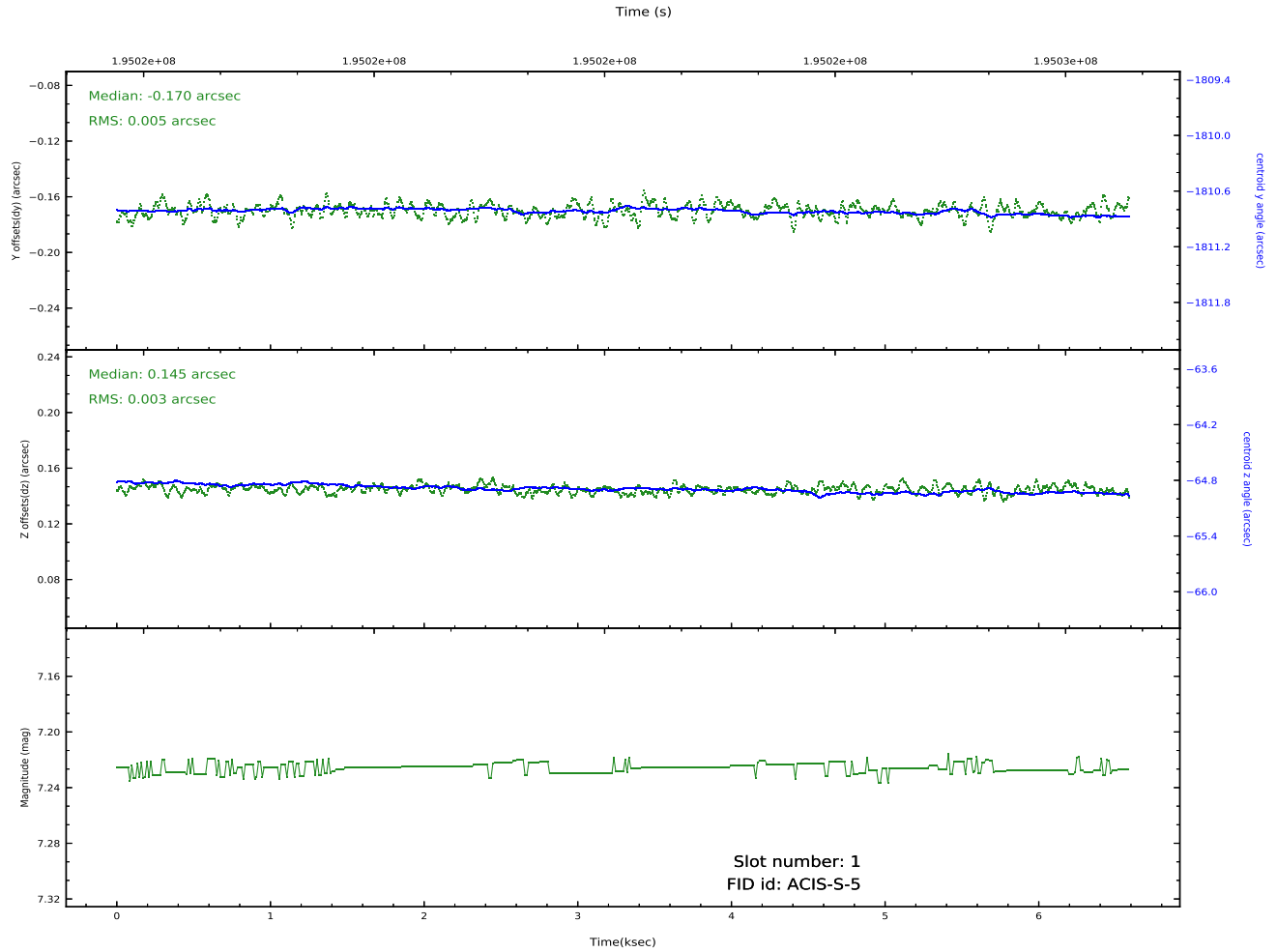
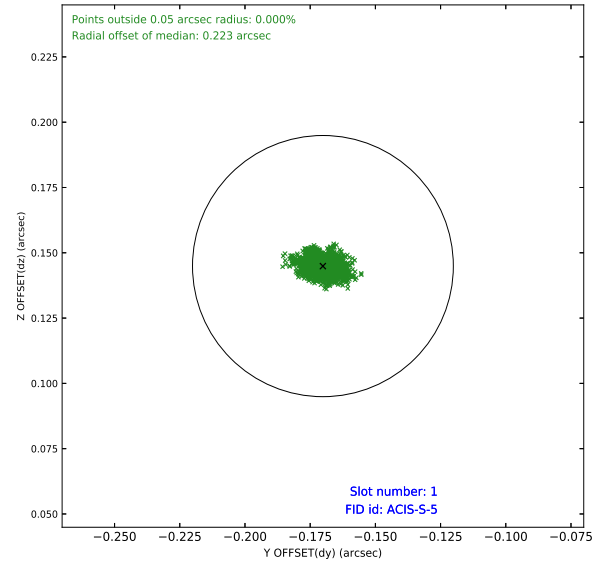
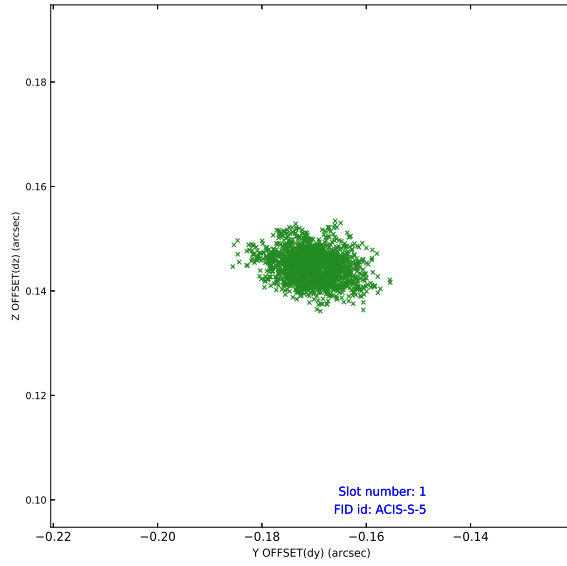


2.5 FID Slots

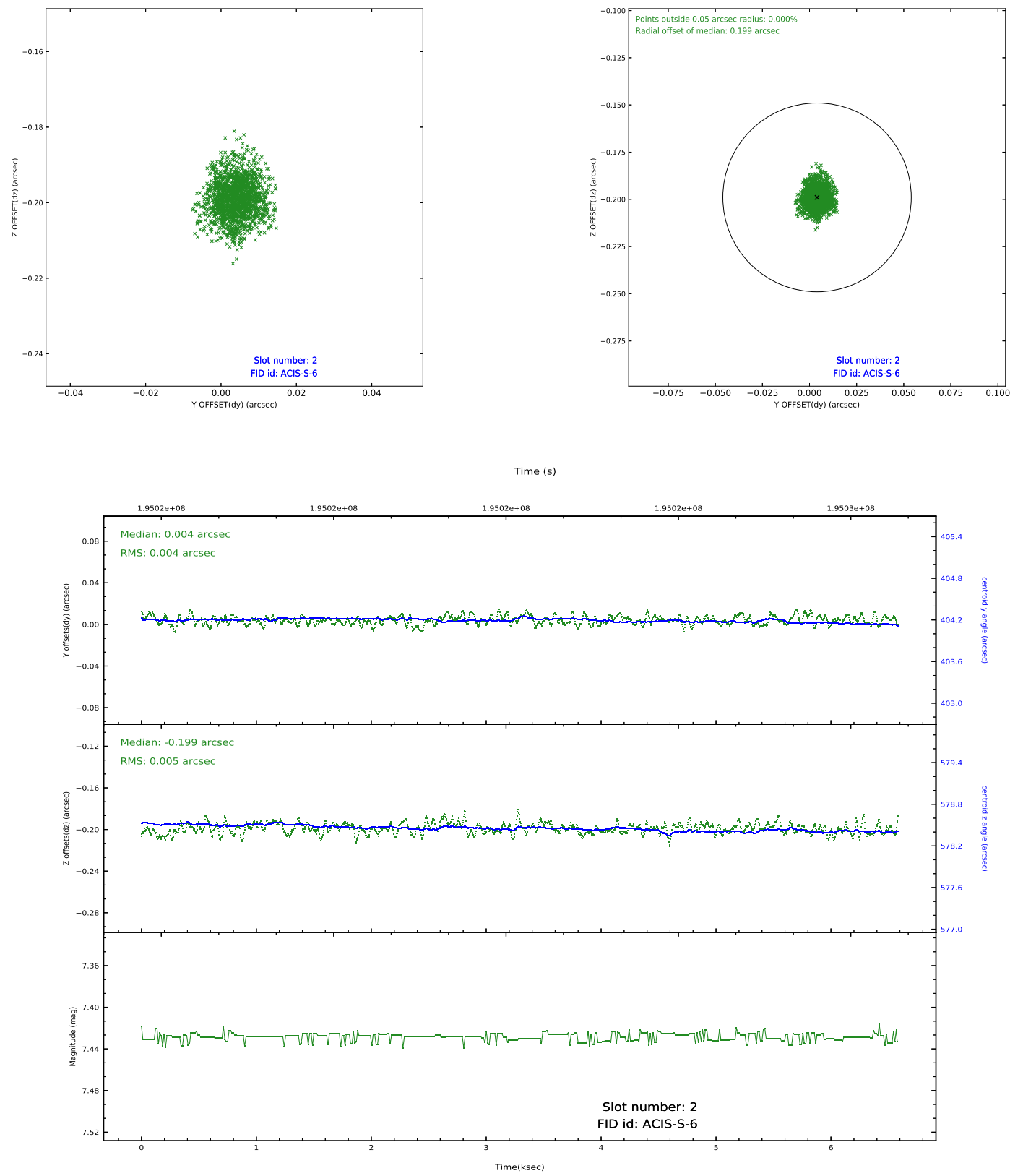
2.5.1 Slot 0



2.5.2 Slot 1



2.5.3 Slot 2



A Summary

A.1 Status

V&V Scientist	Beth Sundheim
V&V Date (YYYY-MM-DD)	2020.09.24
V&V Edition	1
V&V Disposition and Status	OK
V&V Charge Time	6.587

A.2 Comments