

V&V Reference Report

L2 ASCDS Version : 7.6.7.2

Observation 4862 - L2 Version 001
Chandra X-Ray Center

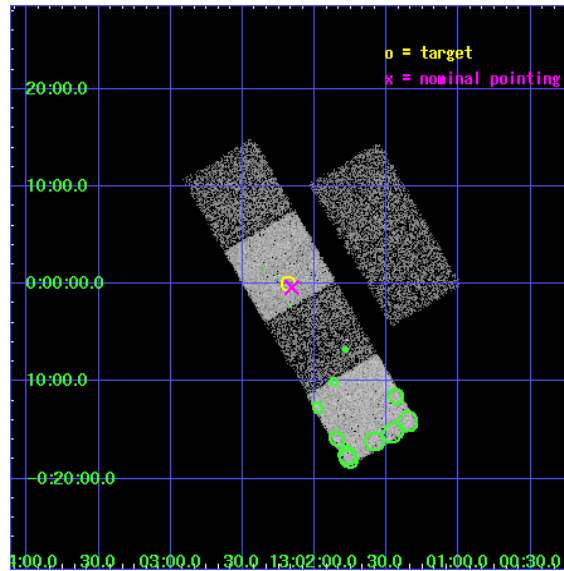
L2 Processing Date : May 19 2006

Contents

1	Front	2
2	OBI	3
2.1	OBI	3
2.1.1	Images	3
2.1.2	Bias	3
2.1.3	Parameters	4
2.1.4	Events	4
2.2	Compared Parameters	5
2.3	Aspect	6
2.4	Star Slots	9
2.4.1	Slot 3	9
2.4.2	Slot 4	10
2.4.3	Slot 5	11
2.4.4	Slot 6	12
2.5	FID Slots	13
2.5.1	Slot 0	13
2.5.2	Slot 1	14
2.5.3	Slot 2	15
3	Point Sources	16
A	Summary	17
A.1	Status	17
A.2	Comments	17

1 Front

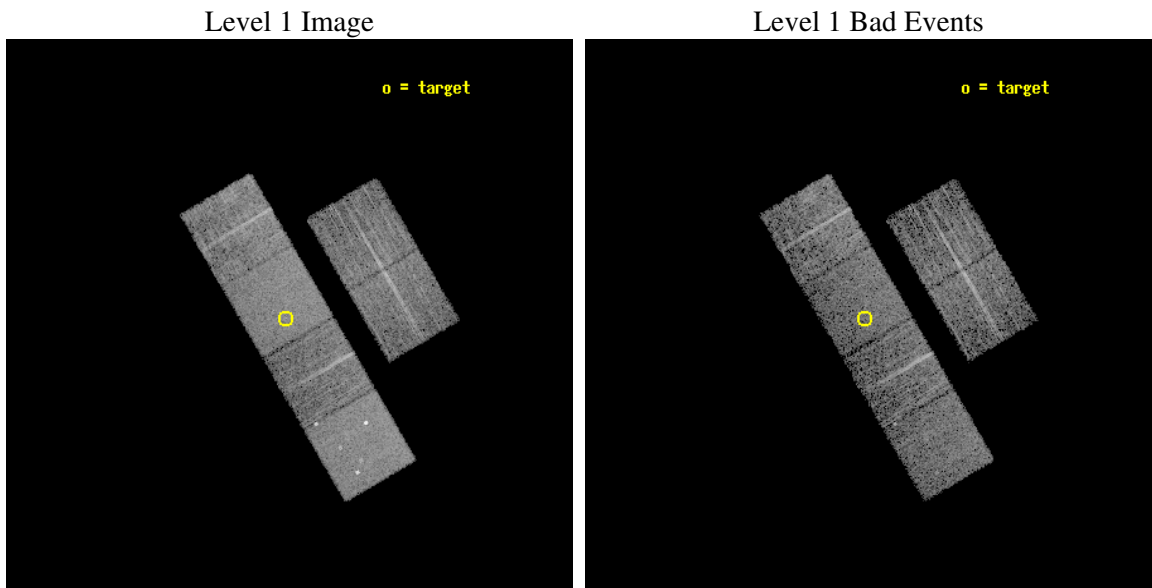
seq_num	700944
obs_id	4862
title	X-ray Properties of Dust Reddened Quasars from the Sloan Digital Sky Survey
observer	Gordon Richards
object	SDSS J130211.04+000004.5
dtcycle	0
cycle	P
ra_targ	195.545833
dec_targ	0.00125
ra_nom	195.53964185153
dec_nom	-0.0060908105293623
roll_nom	239.7291526727
revision	3
ontime	4959.9999815226
liveltime	4897.1934752031
ontime2	4959.9999815226
ontime3	4959.9999815226
ontime5	4959.9999815226
ontime6	4959.9999815226
ontime7	4959.9999815226
ontime8	4959.9999815226
l2events	54630



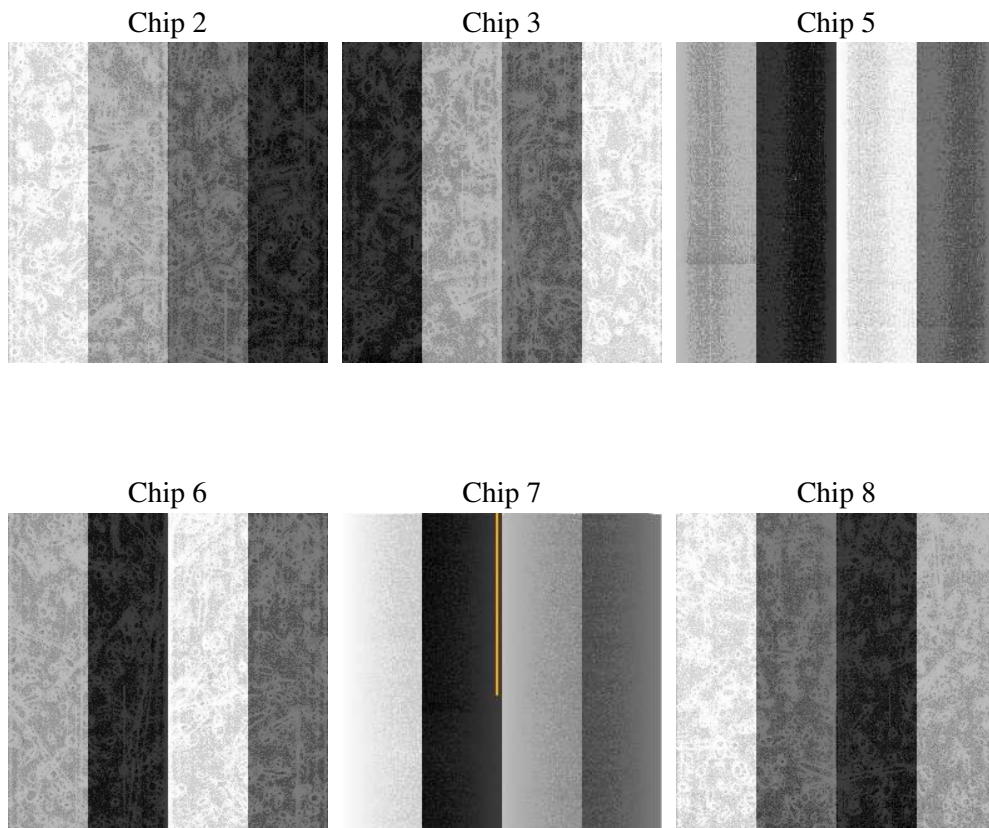
2 OBI

2.1 OBI

2.1.1 Images



2.1.2 Bias



2.1.3 Parameters

obi_num	0
ascdsver	7.6.7.2
caldbver	3.2.2
date	2006-05-19T12:44:01
revision	3

sched_exp_time	5000.000000
ontime	4965.2253793478
ontime2	4965.22535941
ontime3	4965.22535941
ontime5	4965.2253793478
ontime6	4965.22535941
ontime7	4965.2253793478
ontime8	4965.22535941
l1events	253959

2.1.4 Events

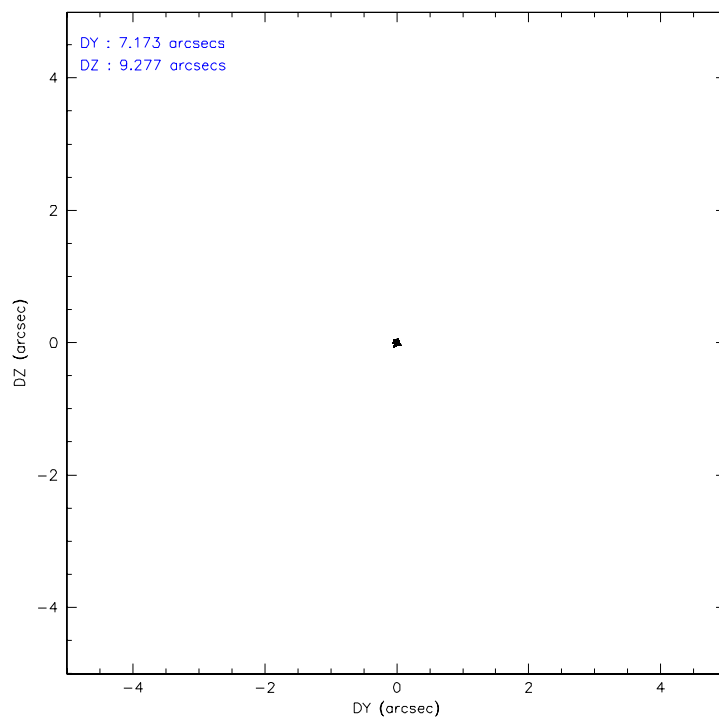
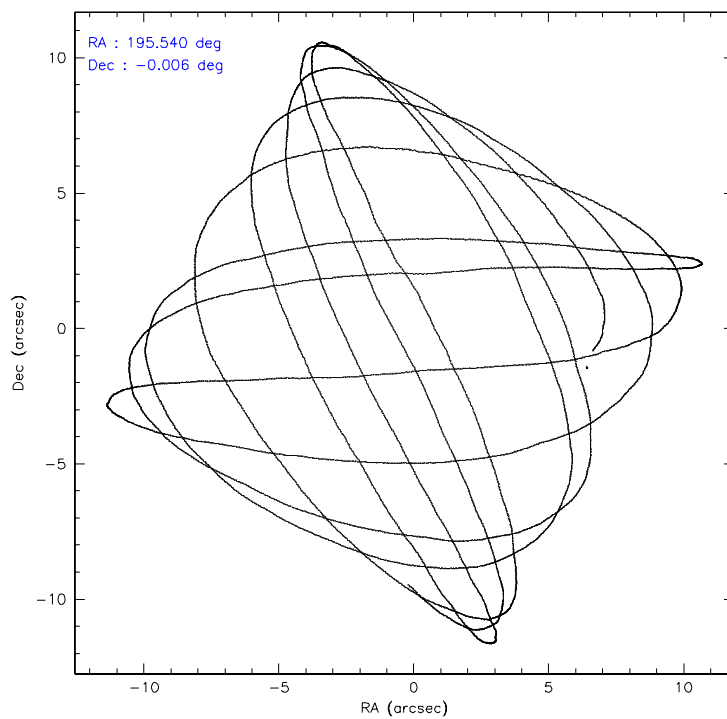
	ccd 2	ccd 3	ccd 5	ccd 6	ccd 7	ccd 8
level 1 events	35578	35209	54433	34746	47870	46123
rejected events	31478	31166	29409	30564	29633	36483
rejected %	88%	88%	54%	87%	61%	79%

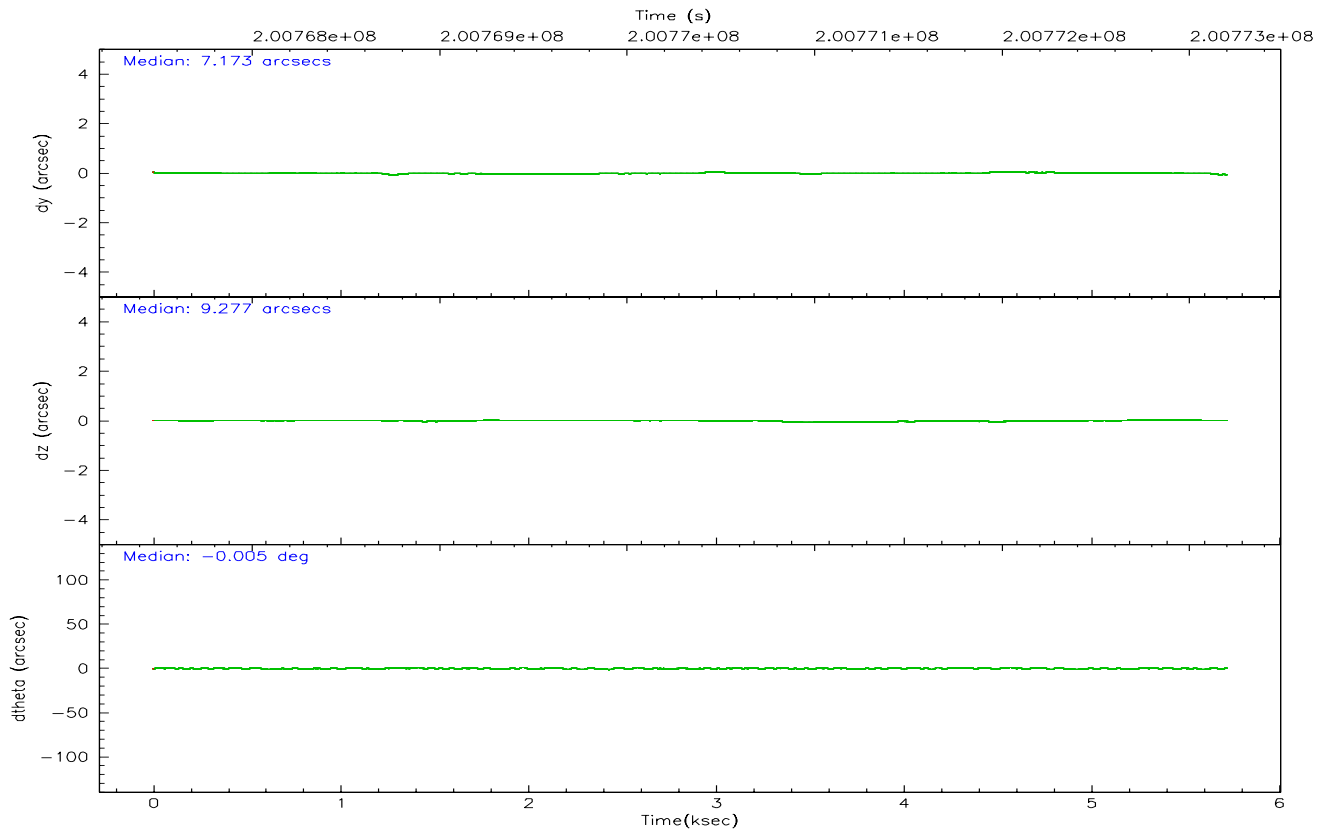
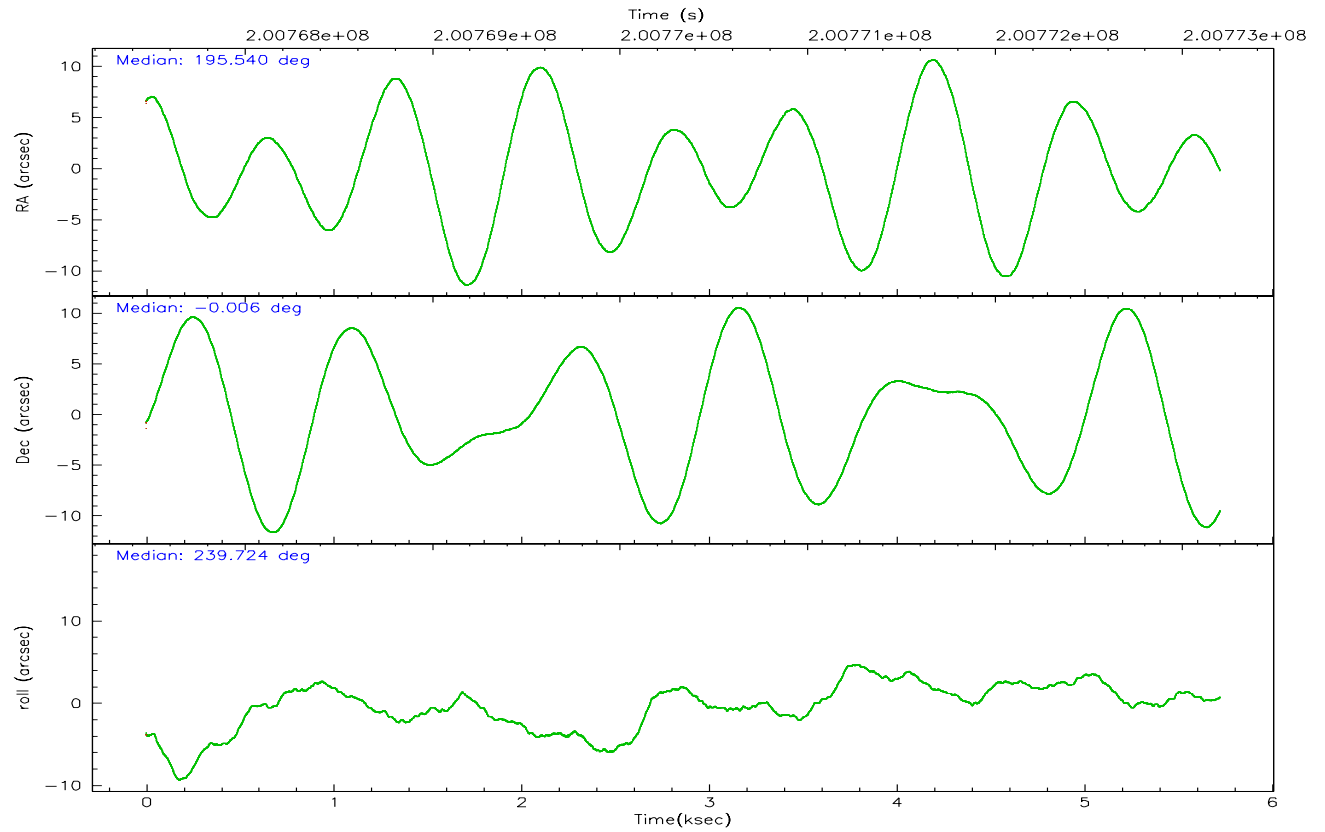
	ccd 2	ccd 3	ccd 5	ccd 6	ccd 7	ccd 8
grade 0 events	1790	1775	3613	1660	1082	2954
	5%	5%	6%	4%	2%	6%
grade 1 events	17	21	219	11	32	24
	0%	0%	0%	0%	0%	0%
grade 2 events	855	761	7186	873	4401	2169
	2%	2%	13%	2%	9%	4%
grade 3 events	360	369	530	425	901	1010
	1%	1%	0%	1%	1%	2%
grade 4 events	389	392	525	418	875	931
	1%	1%	0%	1%	1%	2%
grade 5 events	1379	1579	2613	1649	3124	2157
	3%	4%	4%	4%	6%	4%
grade 6 events	710	748	13199	814	11004	2586
	1%	2%	24%	2%	22%	5%
grade 7 events	30078	29564	26548	28896	26451	34292
	84%	83%	48%	83%	55%	74%

2.2 Compared Parameters

Parameter	Planned	Actual	Parameter	Planned	Actual
Instrument	ACIS	ACIS	Obspar format version number	6	6
Detector	ACIS-235678	ACIS-235678	Obspar file type	PREDICTED	ACTUAL
Grating	NONE	NONE	Obspar update status	NONE	UPDATED
Data mode	FAINT	FAINT	On-chip summing requested	N	N
Observation mode	POINTING	POINTING	Subarray requested	NONE	NONE
Pointing RA	195.539330	195.5396418515339	Alternating exposures requested	N	N
Pointing Dec	0.021117	-0.006090810529362311	Primary exposure time	0.000000	3.2
Pointing Roll	239.572514	239.7291526726969			
SIM focus pos (mm)	-0.684267	-0.6828225247311905			
SIM defocus (mm)	0	0.001444936568705701			
SIM translation stage pos (mm)	-190.132523	-190.1400660498719			
SIM translation stage offset (mm)	0	0.00754346686406393			
Observation start time	200768194.184000	200766960.08805			
Observation start date	2004-05-12T16:55:30	2004-05-12T16:36:00			
Observation end time	200773194.184000	200774015.16336			
Observation end date	2004-05-12T18:18:50	2004-05-12T18:33:35			
Read mode	TIMED	TIMED			

2.3 Aspect



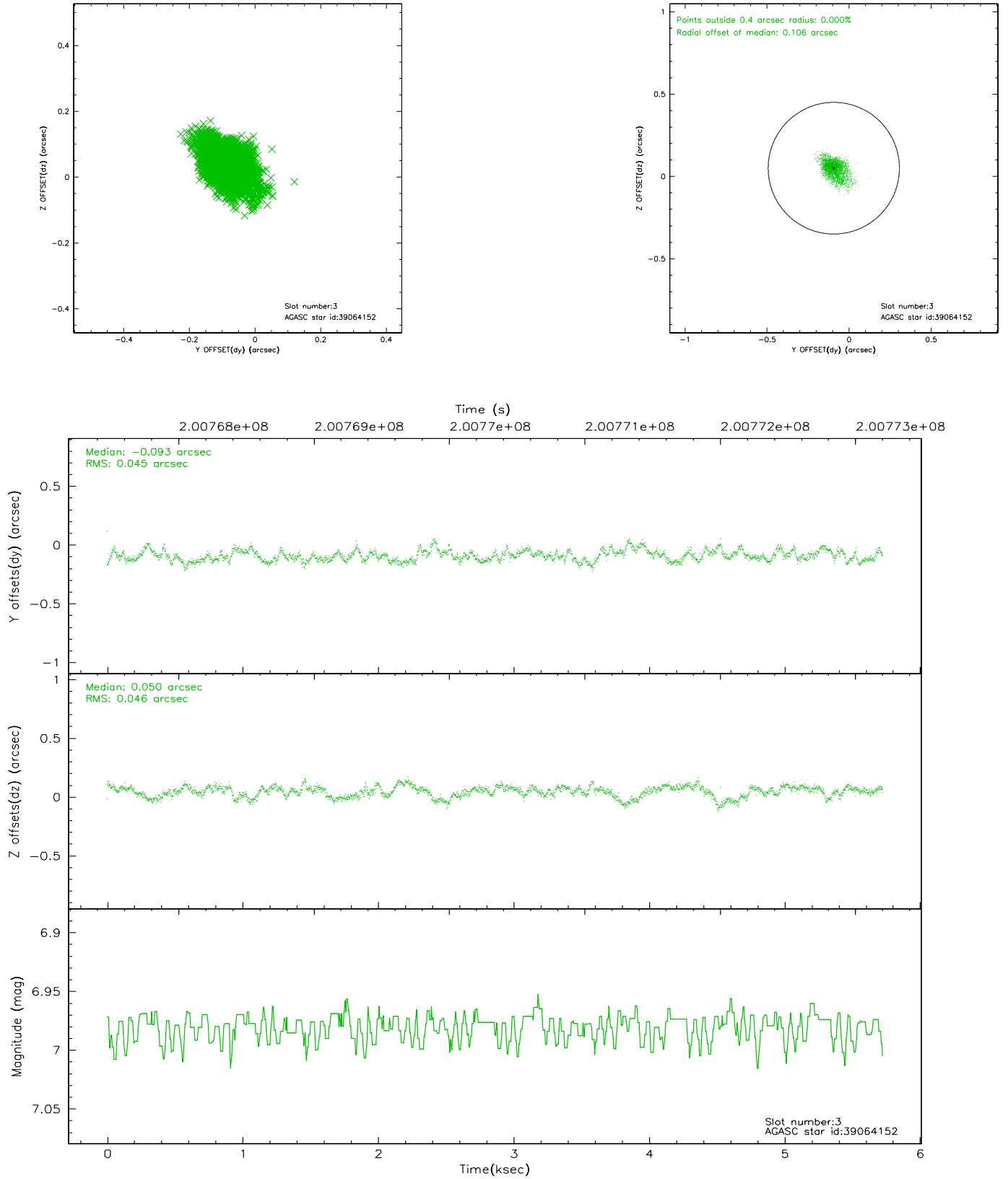


Slot Statistics

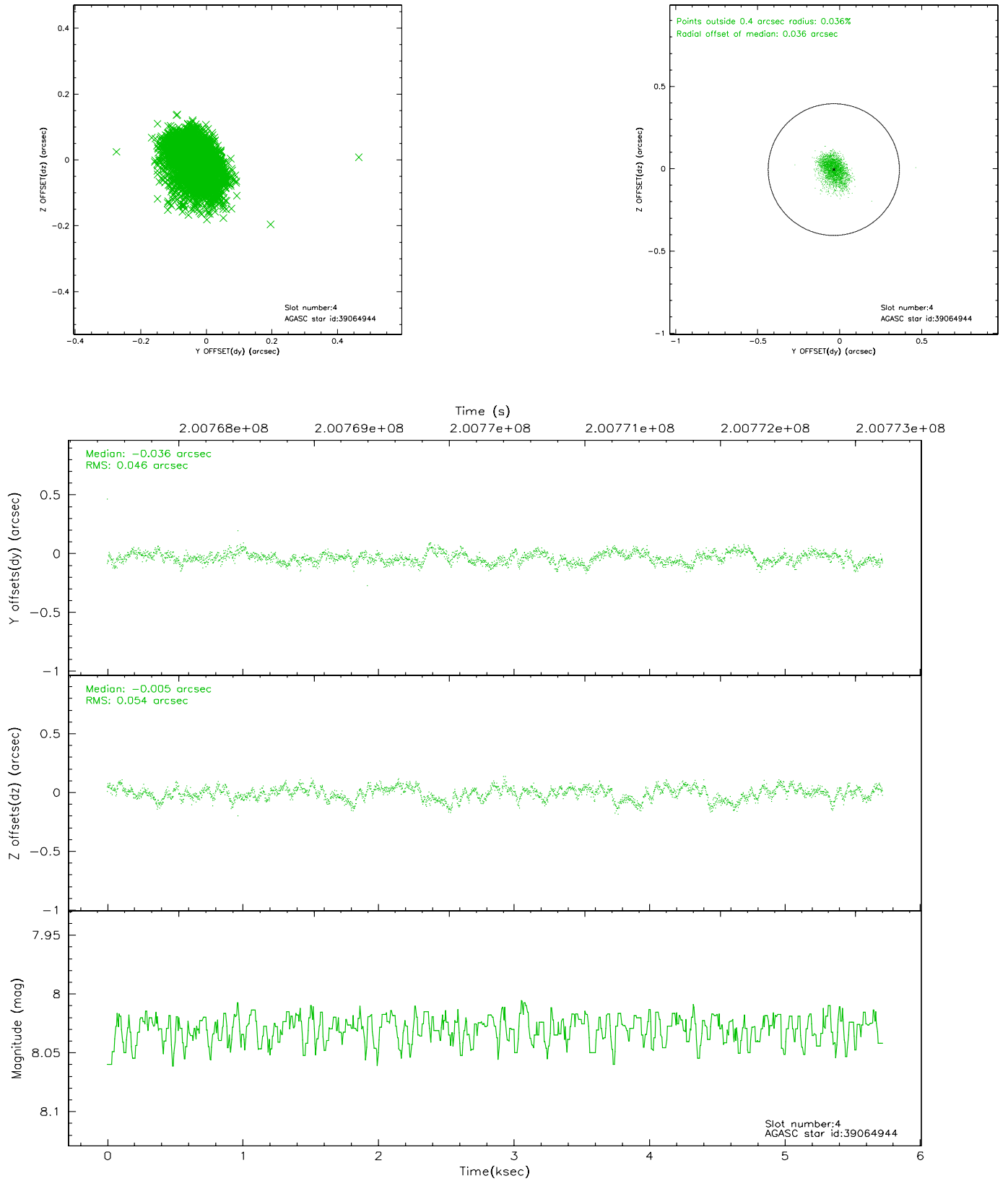
slot	status	id	mag	n_pts	med_dy	med_dz	dr1	dr2	ra	dec	mean_y	mean_z
0	FID	ACIS-S-2	7.10	1397	-0.024	-0.007	0.007	0.010	0.000000	0.000000	-759.93	-1730.52
1	FID	ACIS-S-4	7.20	1397	0.030	0.014	0.005	0.008	0.000000	0.000000	2152.91	176.94
2	FID	ACIS-S-5	7.23	1397	-0.037	0.002	0.006	0.009	0.000000	0.000000	-1811.47	171.75
3	GUIDE	39064152	6.98	2794	-0.093	0.050	0.065	0.114	196.185427	0.295130	-2027.96	1505.91
4	GUIDE	39064944	8.03	2793	-0.036	-0.005	0.074	0.119	195.513486	0.405733	-1147.26	-780.92
5	GUIDE	649726696	10.78	2786	0.105	0.023	0.221	0.383	195.485285	-0.658399	2207.85	1071.23
6	GUIDE	649727328	9.55	2791	0.027	-0.072	0.097	0.159	196.126364	-0.100666	-691.36	2044.68
7	OMITTED		0.00	0	0.000	0.000	0.000	0.000	0.000000	0.000000	0.00	0.00

2.4 Star Slots

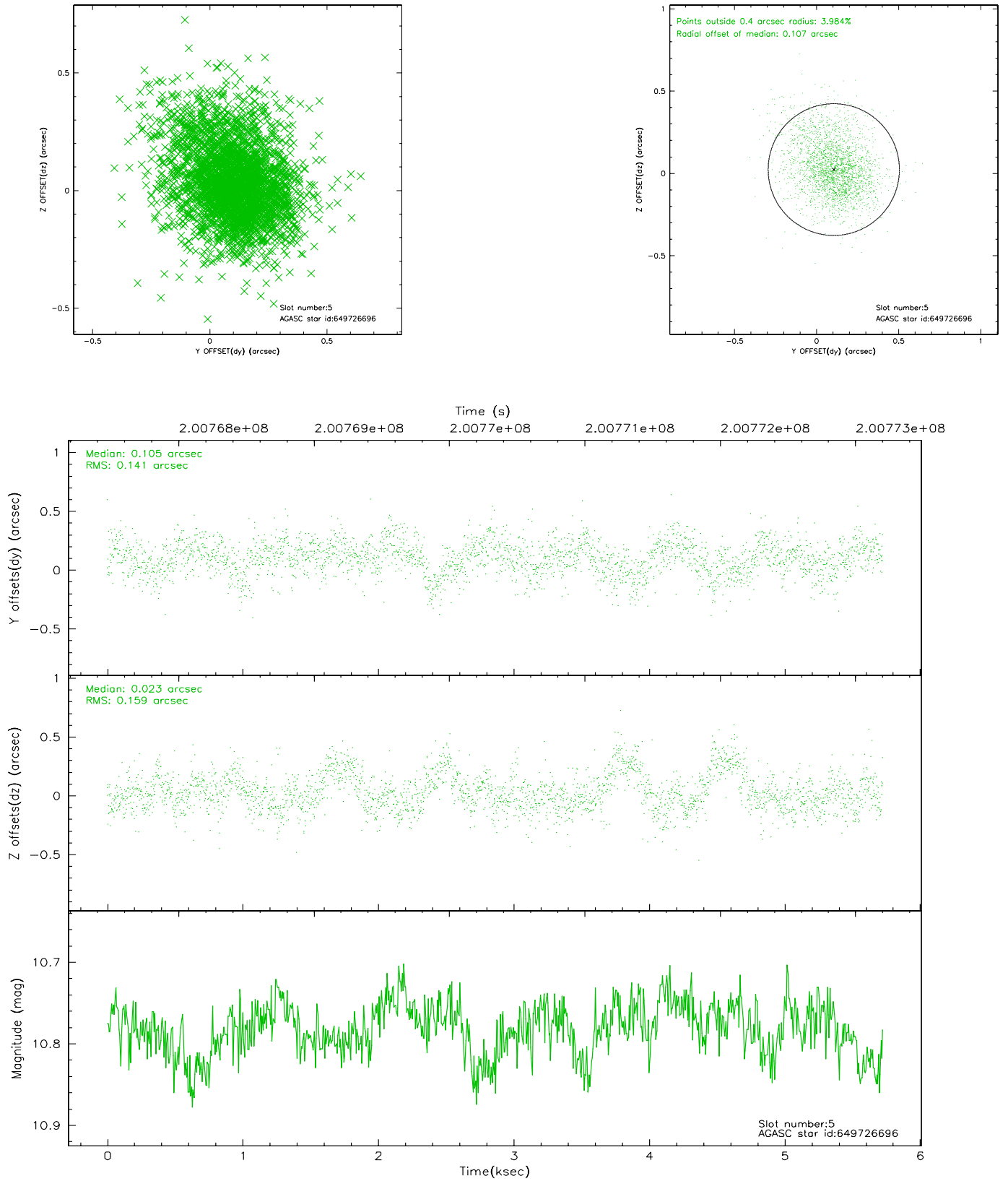
2.4.1 Slot 3



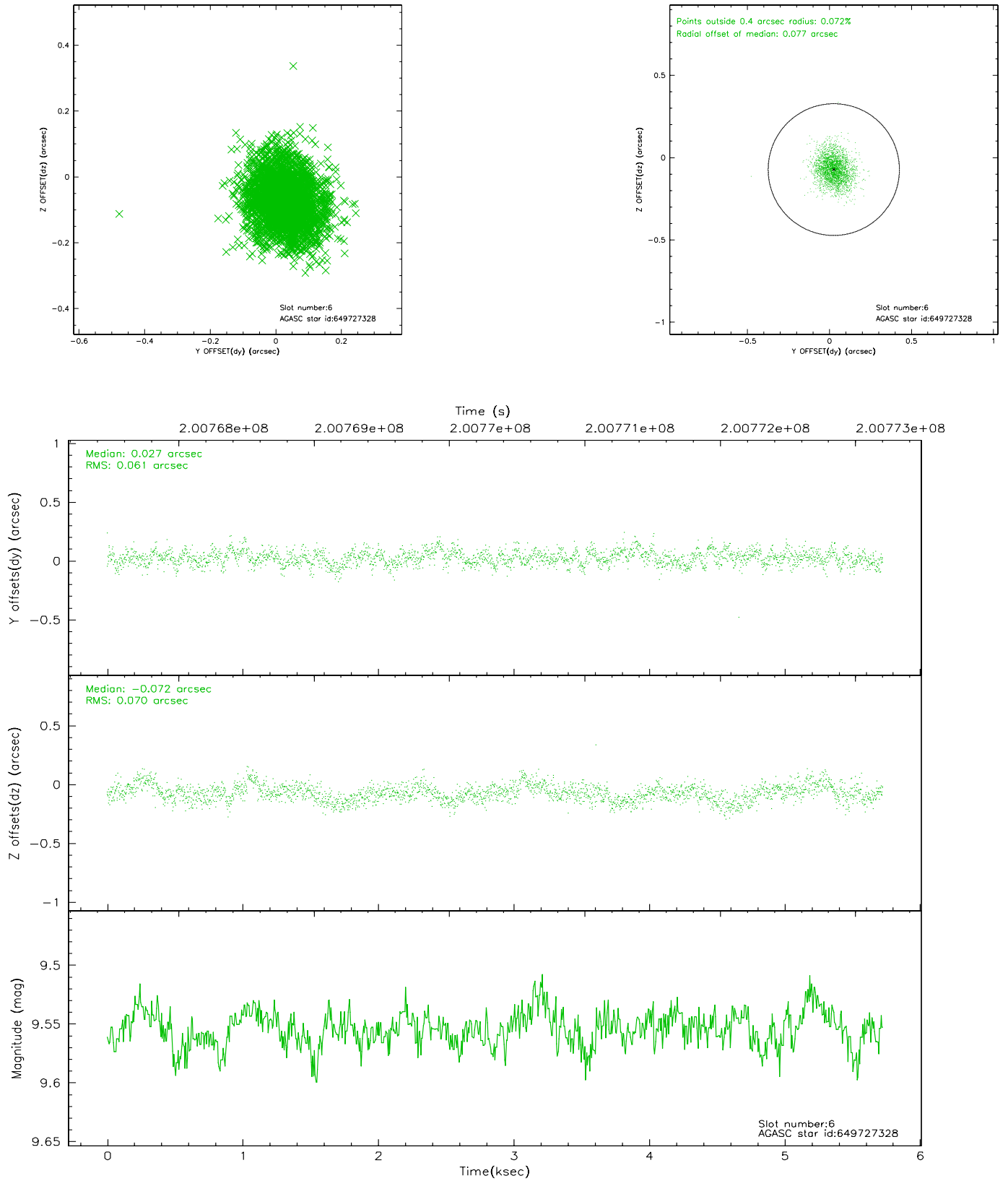
2.4.2 Slot 4



2.4.3 Slot 5

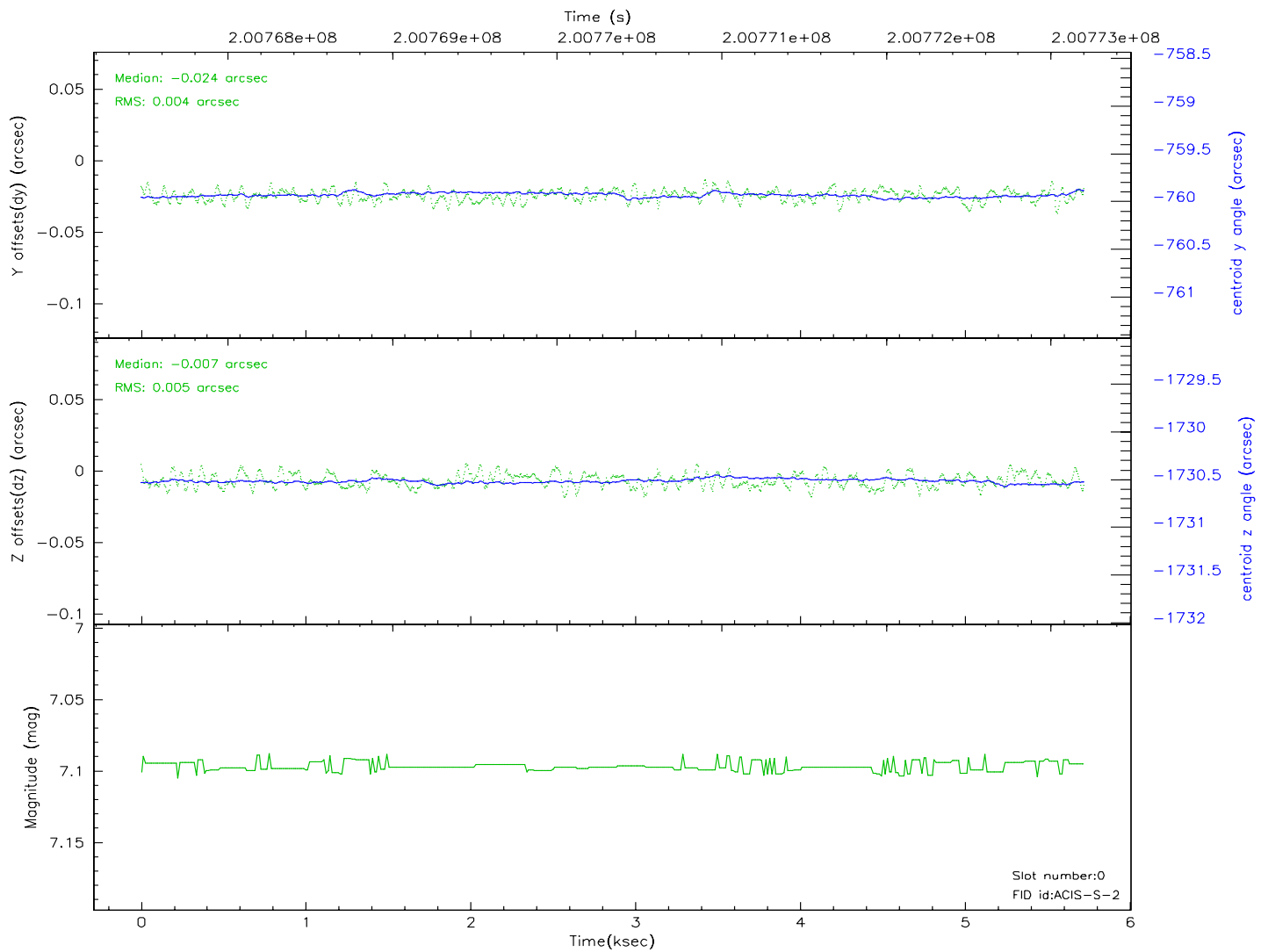
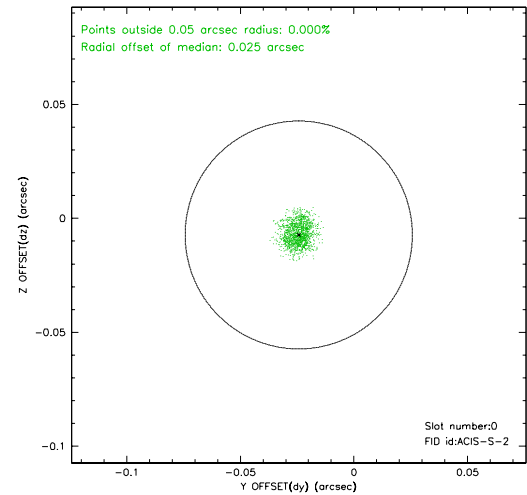
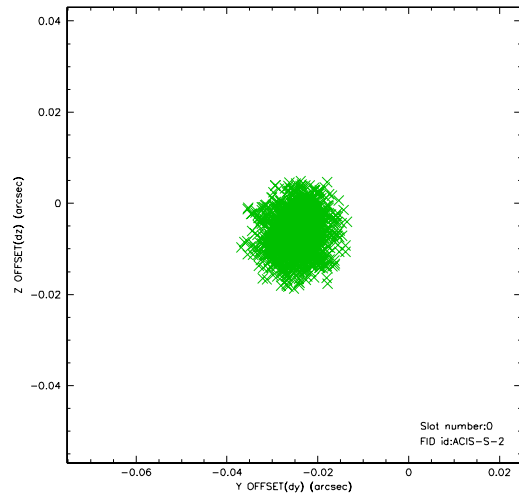


2.4.4 Slot 6

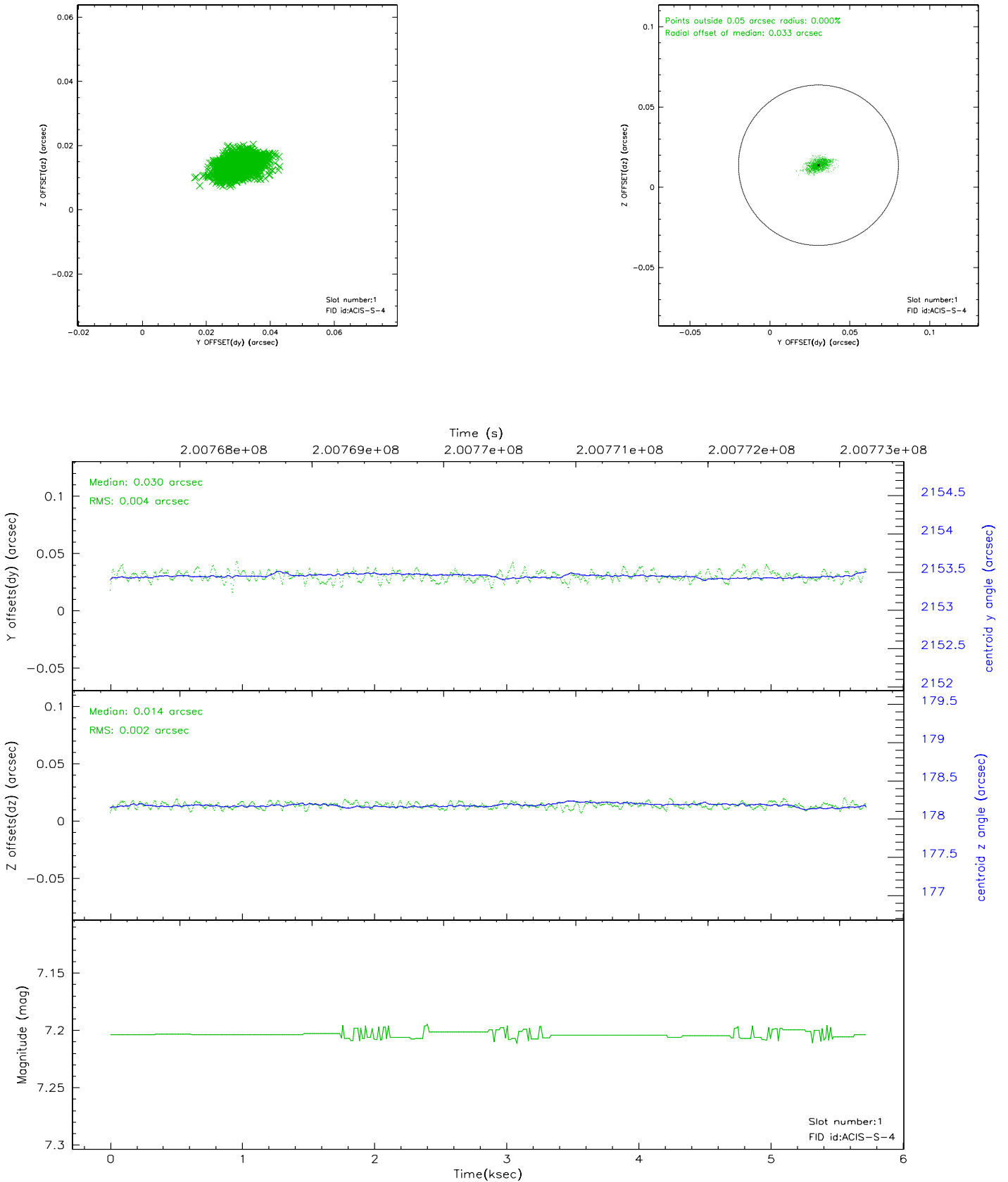


2.5 FID Slots

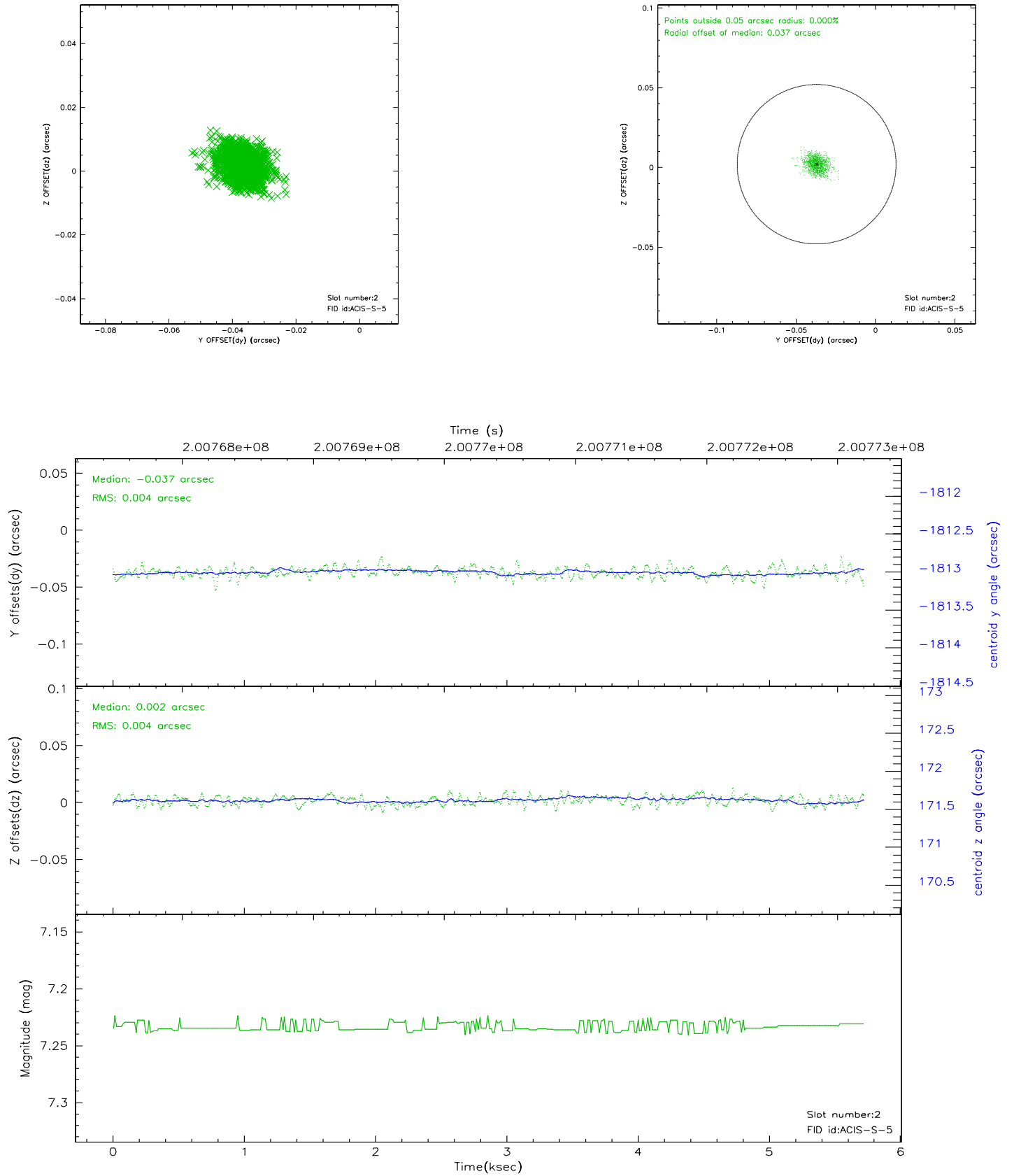
2.5.1 Slot 0



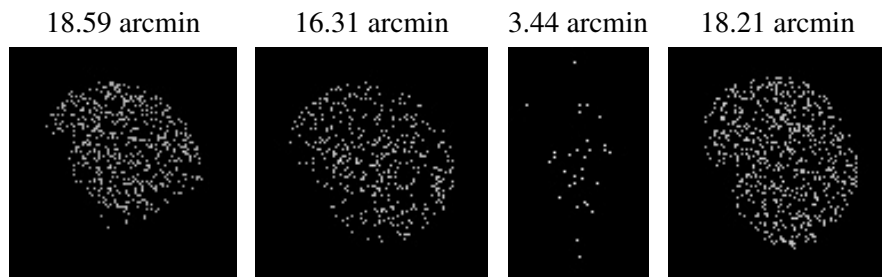
2.5.2 Slot 1



2.5.3 Slot 2



3 Point Sources



A Summary

A.1 Status

V&V Scientist	Beth Sundheim
V&V Date (YYYY-MM-DD)	2010.10.04
V&V Edition	2
V&V Disposition and Status	OK
V&V Charge Time	4.963

A.2 Comments

The guide star in slot 7 was manually excluded from the processing due to poor data quality.