

# V&V Reference Report

## L2 ASCDS Version : 8.5

Observation 4832 - L2 Version 3  
Chandra X-Ray Center

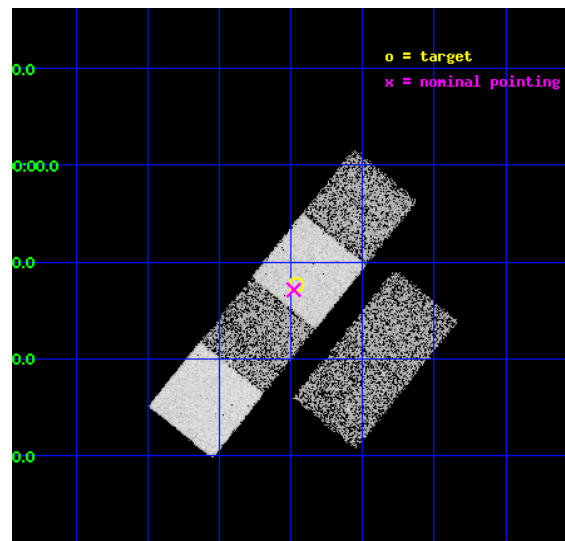
L2 Processing Date : Dec 10 2012

## Contents

<b>1</b>	<b>Front</b>	<b>2</b>
<b>2</b>	<b>OBI</b>	<b>3</b>
2.1	OBI . . . . .	3
2.1.1	Images . . . . .	3
2.1.2	Bias . . . . .	3
2.1.3	Parameters . . . . .	4
2.1.4	Events . . . . .	4
2.2	Compared Parameters . . . . .	5
2.3	Aspect . . . . .	6
2.4	Star Slots . . . . .	9
2.4.1	Slot 3 . . . . .	9
2.4.2	Slot 4 . . . . .	10
2.4.3	Slot 5 . . . . .	11
2.4.4	Slot 6 . . . . .	12
2.4.5	Slot 7 . . . . .	13
2.5	FID Slots . . . . .	14
2.5.1	Slot 0 . . . . .	14
2.5.2	Slot 1 . . . . .	15
2.5.3	Slot 2 . . . . .	16
<b>A</b>	<b>Summary</b>	<b>17</b>
A.1	Status . . . . .	17
A.2	Comments . . . . .	17

# 1 Front

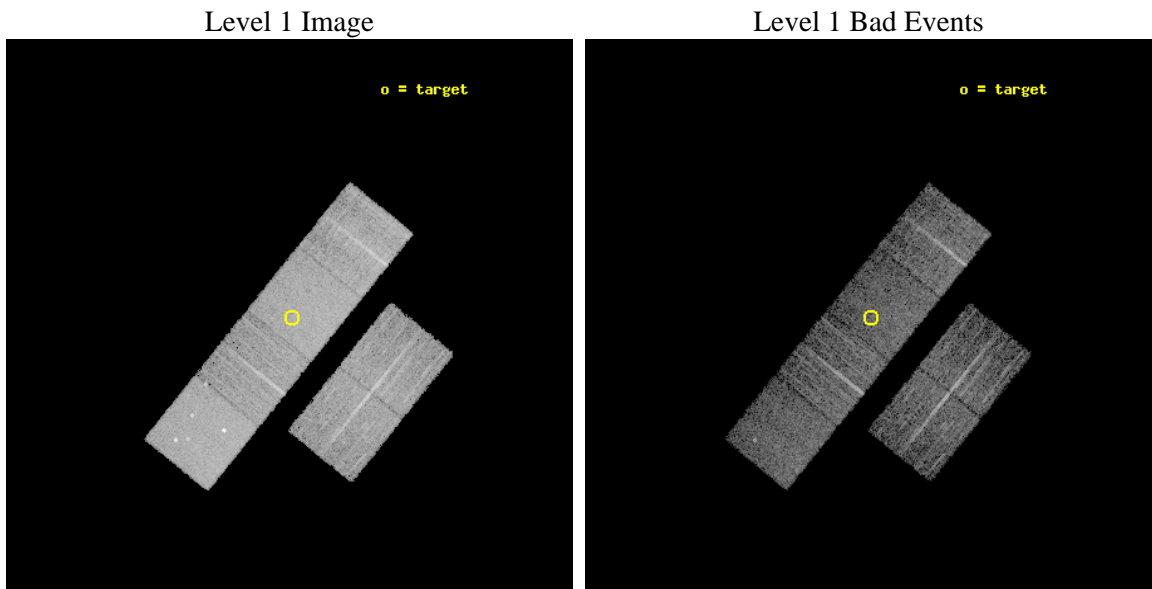
seq_num	700914	Sequence number
obs_id	4832	Observation id
title	Constraining the Hard-X-ray Through Submm SEDs of a Complete Sample of Broad Absorption Line Quasars	Proposal title
observer	Dr. Sarah Gallagher	Principal investigator
object	LBQS 0109-0128	Source name
dtcycle	0	&#160
cycle	P	events from which exps? Prim/Second/Both
ra_targ	18.115	Observer's specified target RA [deg]
dec_targ	-1.206083	Observer's specified target Dec [deg]
ra_nom	18.119768816584	Nominal RA [deg]
dec_nom	-1.2145404147505	Nominal Dec [deg]
roll_nom	308.91733020868	Nominal Roll [deg]
revision	3	Processing version of data
ontime	5955.1999778152	Sum of GTIs [s]
livetime	5879.7916499051	Livetime [s]
ontime2	5955.1999778152	Sum of GTIs [s]
ontime3	5951.9590174556	Sum of GTIs [s]
ontime5	5955.1999778152	Sum of GTIs [s]
ontime6	5955.1999778152	Sum of GTIs [s]
ontime7	5955.1999778152	Sum of GTIs [s]
ontime8	5955.1999778152	Sum of GTIs [s]
l2events	75823	Number of level 2 events



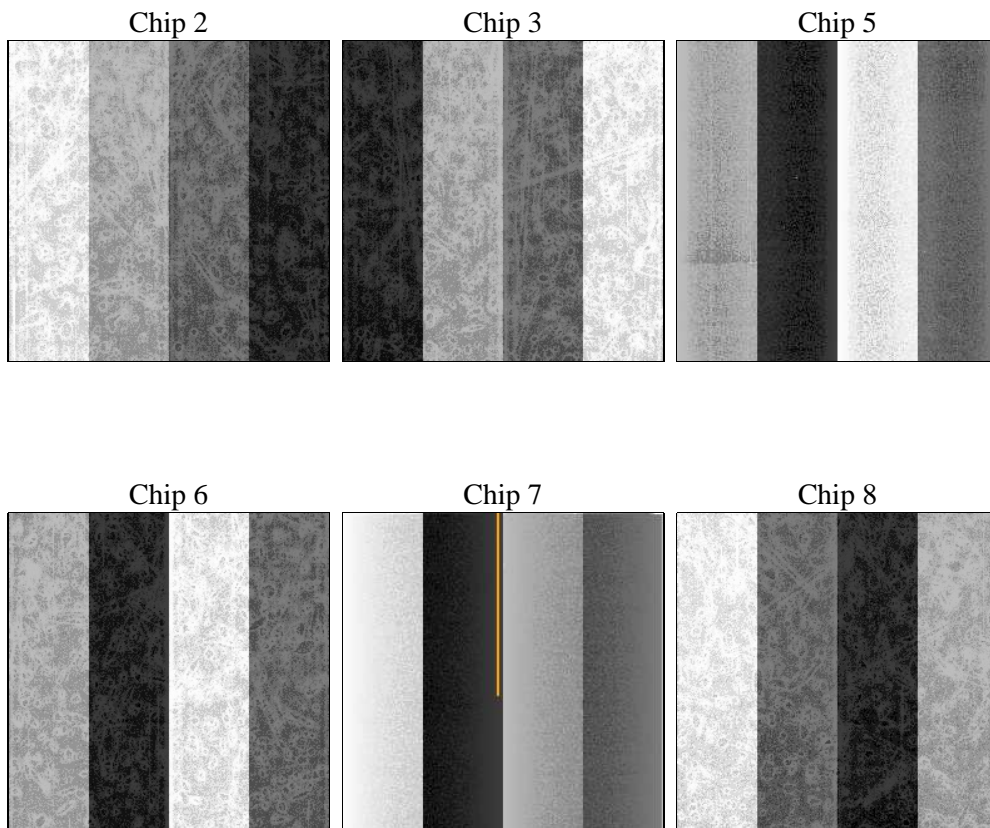
## 2 OBI

### 2.1 OBI

#### 2.1.1 Images



#### 2.1.2 Bias



### 2.1.3 Parameters

obi_num	0	Obi number	sched_exp_time	6000.000000	[s] Scheduled observation exposure time
ascdsver	8.5	Processing system revision	ontime	5955.1999778152	Sum of GTIs [s]
caldsver	4.5.4	&#160	ontime2	5955.1999778152	Sum of GTIs [s]
date	2012-12-10T23:26:03	Date and time of file creation	ontime3	5951.9590174556	Sum of GTIs [s]
revision	3	Processing version of data	ontime5	5955.1999778152	Sum of GTIs [s]
			ontime6	5955.1999778152	Sum of GTIs [s]
			ontime7	5955.1999778152	Sum of GTIs [s]
			ontime8	5955.1999778152	Sum of GTIs [s]
			l1events	334094	Number of level 1 events

### 2.1.4 Events

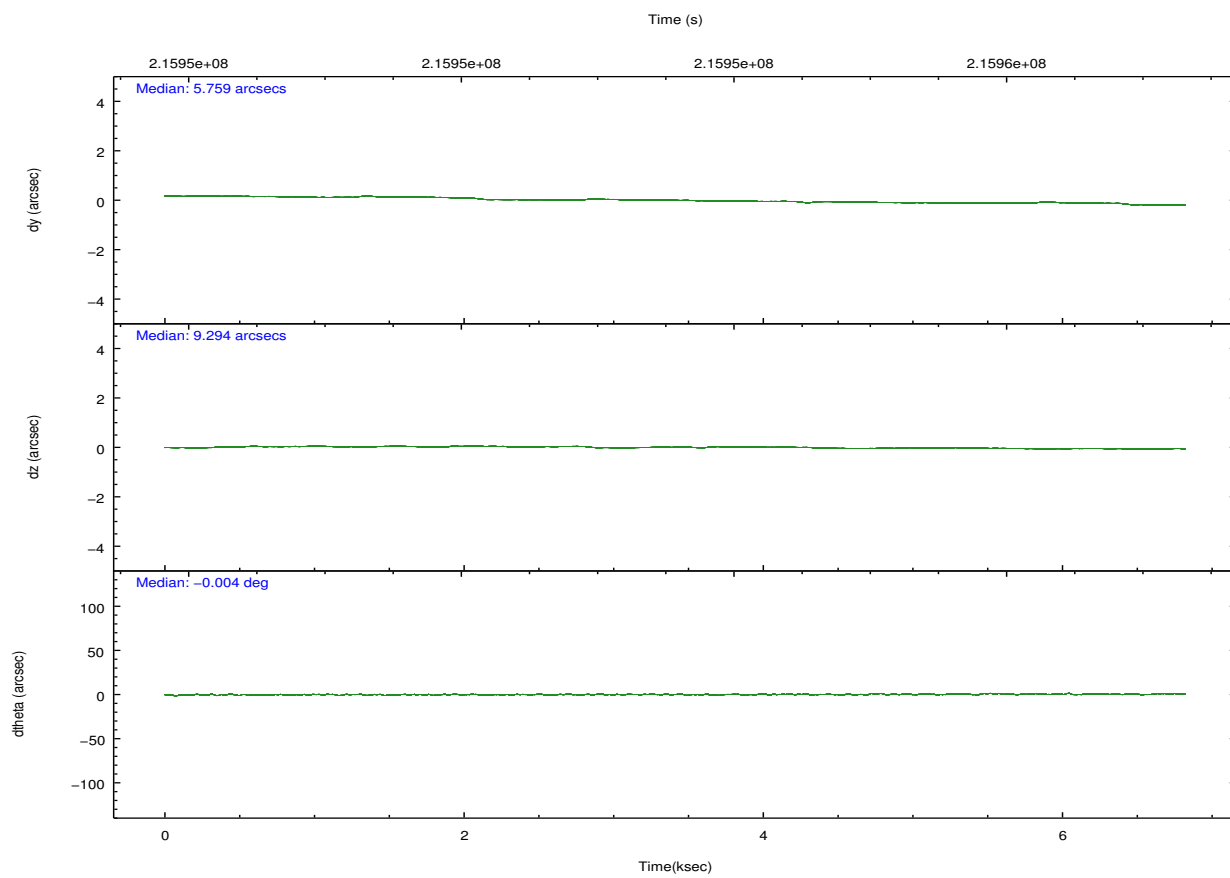
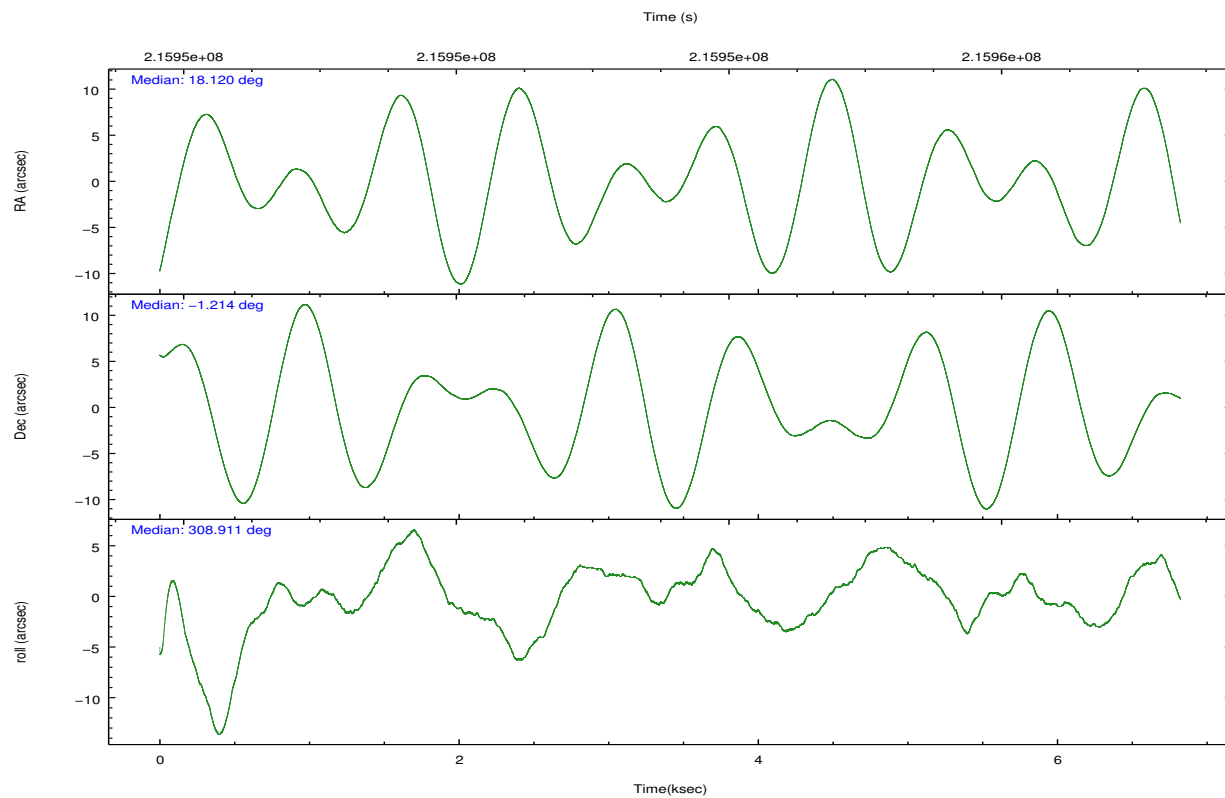
	ccd 2	ccd 3	ccd 5	ccd 6	ccd 7	ccd 8		ccd 2	ccd 3	ccd 5	ccd 6	ccd 7	ccd 8
level 1 events	45528	45139	71072	48658	63681	60016	grade 0 events	2422	2358	4187	2369	2320	4252
rejected events	40081	39823	37512	42968	37355	46641		5%	5%	5%	4%	3%	7%
rejected %	88%	88%	52%	88%	58%	77%	grade 1 events	34	21	112	22	54	37
								0%	0%	0%	0%	0%	0%
							grade 2 events	1123	978	9886	1162	5152	2834
								2%	2%	13%	2%	8%	4%
							grade 3 events	470	515	1344	538	2254	1385
								1%	1%	1%	1%	3%	2%
							grade 4 events	532	567	1248	518	2463	1319
								1%	1%	1%	1%	3%	2%
							grade 5 events	1808	2022	5217	2113	6025	2800
								3%	4%	7%	4%	9%	4%
							grade 6 events	906	900	16911	1104	14155	3598
								1%	1%	23%	2%	22%	5%
							grade 7 events	38233	37778	32167	40832	31258	43791
								83%	83%	45%	83%	49%	72%



## 2.2 Compared Parameters

Parameter	Planned	Actual	Parameter	Planned	Actual
Instrument	ACIS	ACIS	Obspar format version number	7	7
Detector	ACIS-235678	ACIS-235678	Obspar file type	PREDICTED	ACTUAL
Grating	NONE	NONE	Obspar update status	NONE	UPDATED
Data mode	FAINT	FAINT	Number of optional ACIS chips dropped	0	0
Observation mode	POINTING	POINTING	On-chip summing requested	N	N
[deg] Pointing RA	18.094113	18.11976881658414	Subarray requested	NONE	NONE
[deg] Pointing Dec	-1.205105	-1.214540414750545	Alternating exposures requested	N	N
[deg] Pointing Roll	308.760155	308.9173302086787	[s] Primary exposure time	0.000000	3.2
[mm] SIM focus pos	-0.684267	-0.6828225247311905			
[mm] SIM defocus	0	0.001444936568705701			
[mm] SIM translation stage pos	-190.132523	-190.1400660498719			
[mm] SIM translation stage offset	0	0.00754346686406393			
[s] Observation start time (MET)	215950983.184000	215949647.70085			
Observation start date	2004-11-04T10:21:59	2004-11-04T10:00:47			
[s] Observation end time (MET)	215956983.184000	215957945.58872			
Observation end date	2004-11-04T12:01:59	2004-11-04T12:19:05			
Read mode	TIMED	TIMED			

## 2.3 Aspect

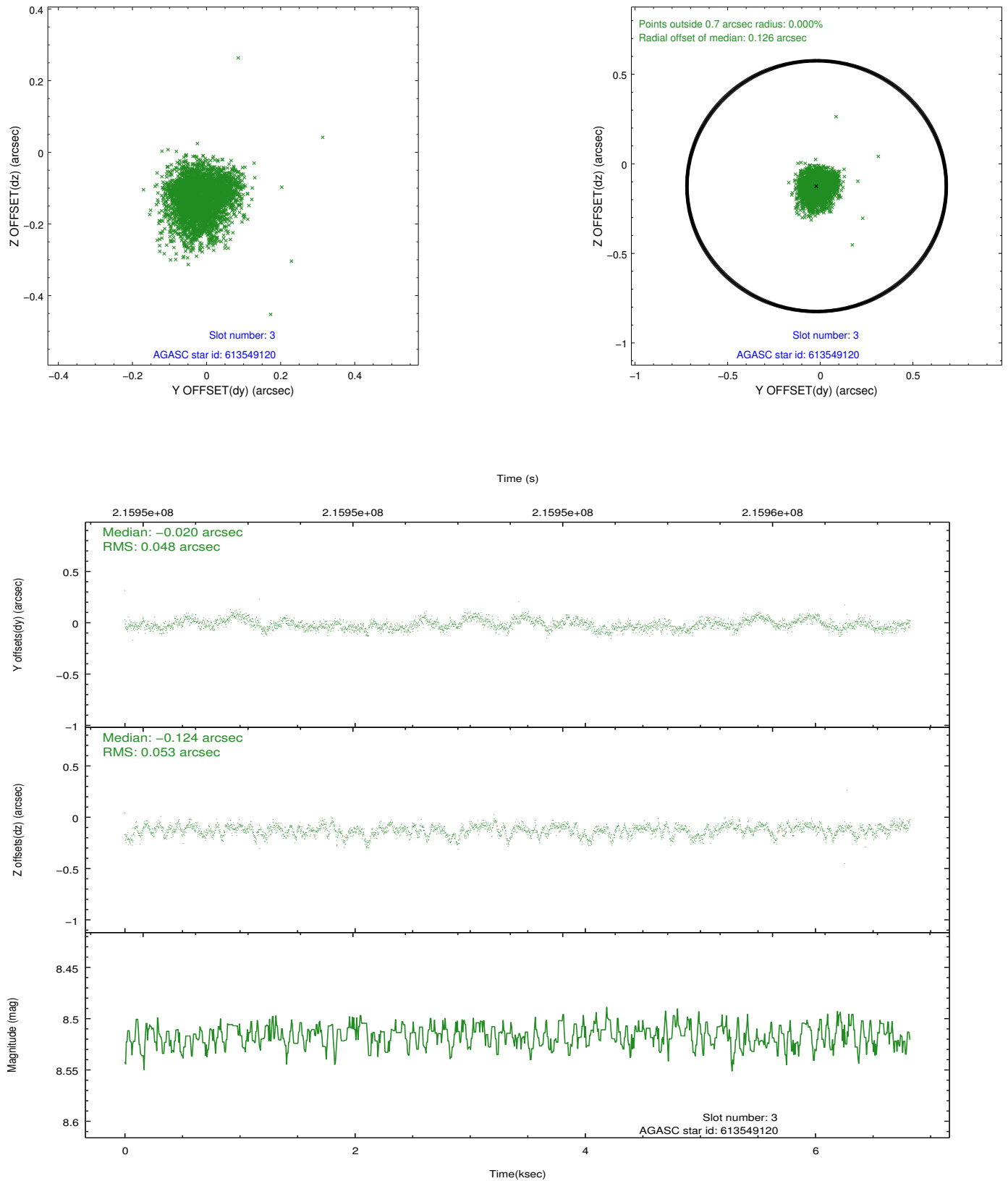


### Slot Statistics

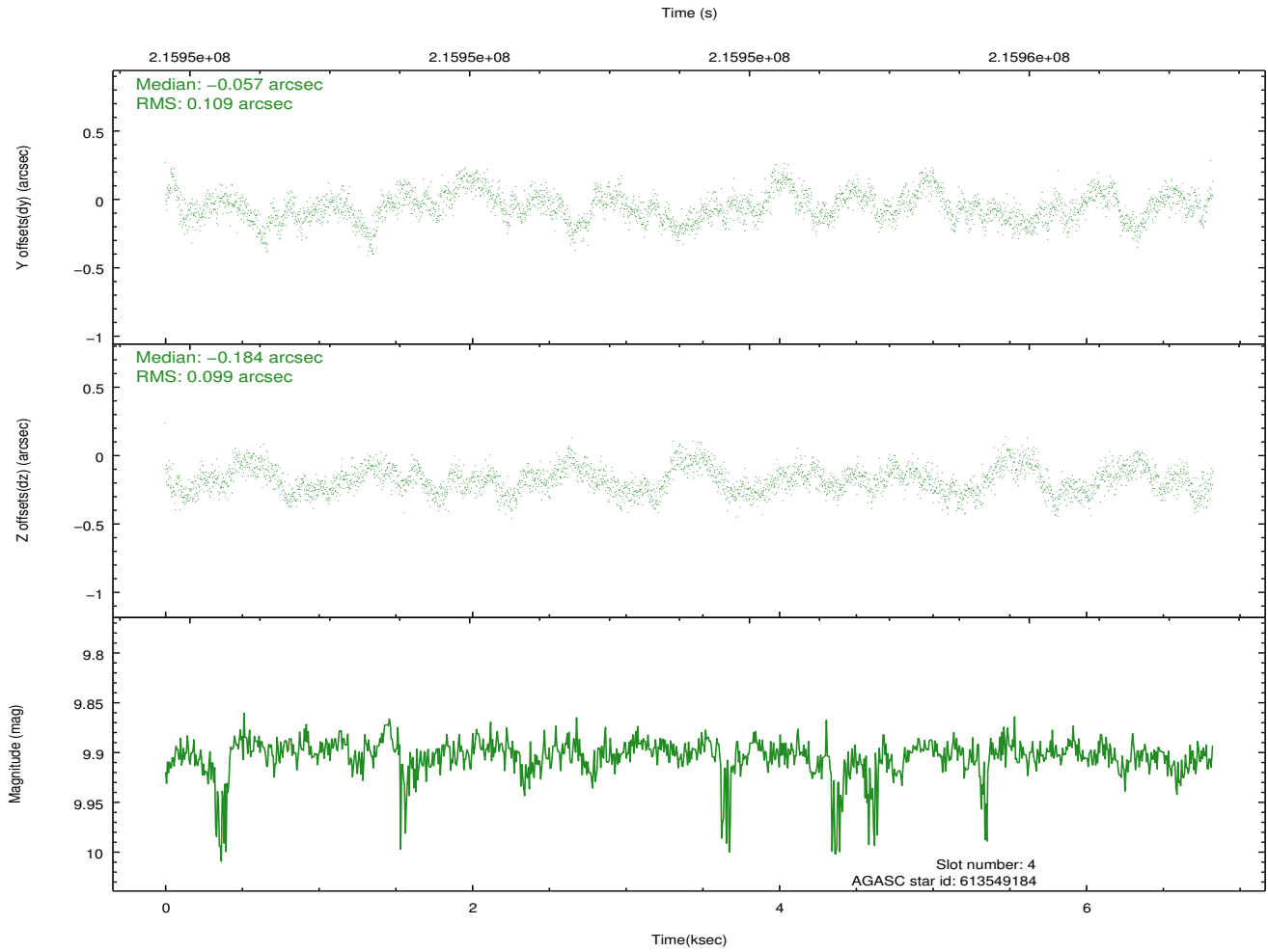
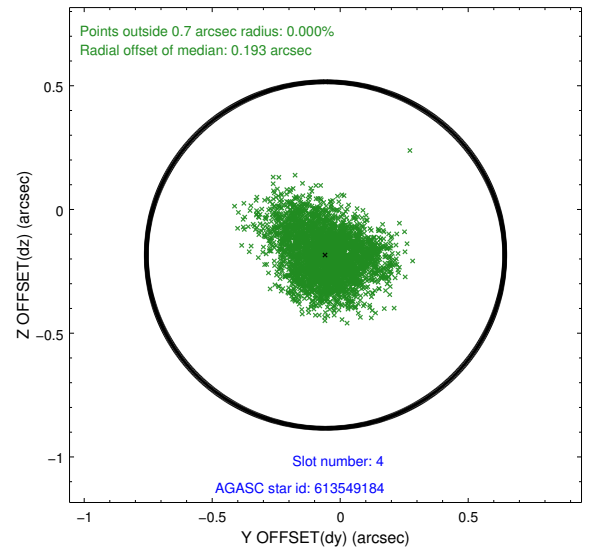
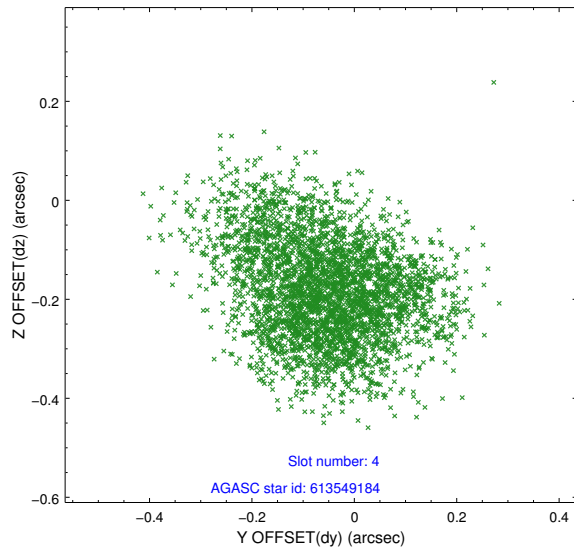
slot	status	id	mag	n_pts	med_dy	med_dz	dr1	dr2	ra	dec	mean_y	mean_z
0	FID	ACIS-S-2	7.10	1665	-0.065	-0.046	0.007	0.011	0.000000	0.000000	-758.53	-1730.57
1	FID	ACIS-S-4	7.20	1665	0.112	0.044	0.006	0.010	0.000000	0.000000	2154.53	177.15
2	FID	ACIS-S-5	7.23	1665	-0.078	0.011	0.007	0.011	0.000000	0.000000	-1810.30	171.73
3	GUIDE	613549120	8.52	3328	-0.020	-0.124	0.075	0.120	17.803287	-1.274359	-460.54	-972.78
4	GUIDE	613549184	9.90	3326	-0.057	-0.184	0.157	0.251	18.424548	-1.246000	859.28	834.63
5	GUIDE	613549704	10.04	3328	-0.052	0.103	0.126	0.204	17.734307	-0.994159	-1402.44	-534.72
6	GUIDE	613552008	8.97	3330	0.027	0.065	0.173	0.235	18.328422	-1.862158	2371.90	-824.53
7	GUIDE	613686640	10.64	3325	0.106	0.150	0.170	0.272	18.866209	-1.278950	1948.12	2000.23

## 2.4 Star Slots

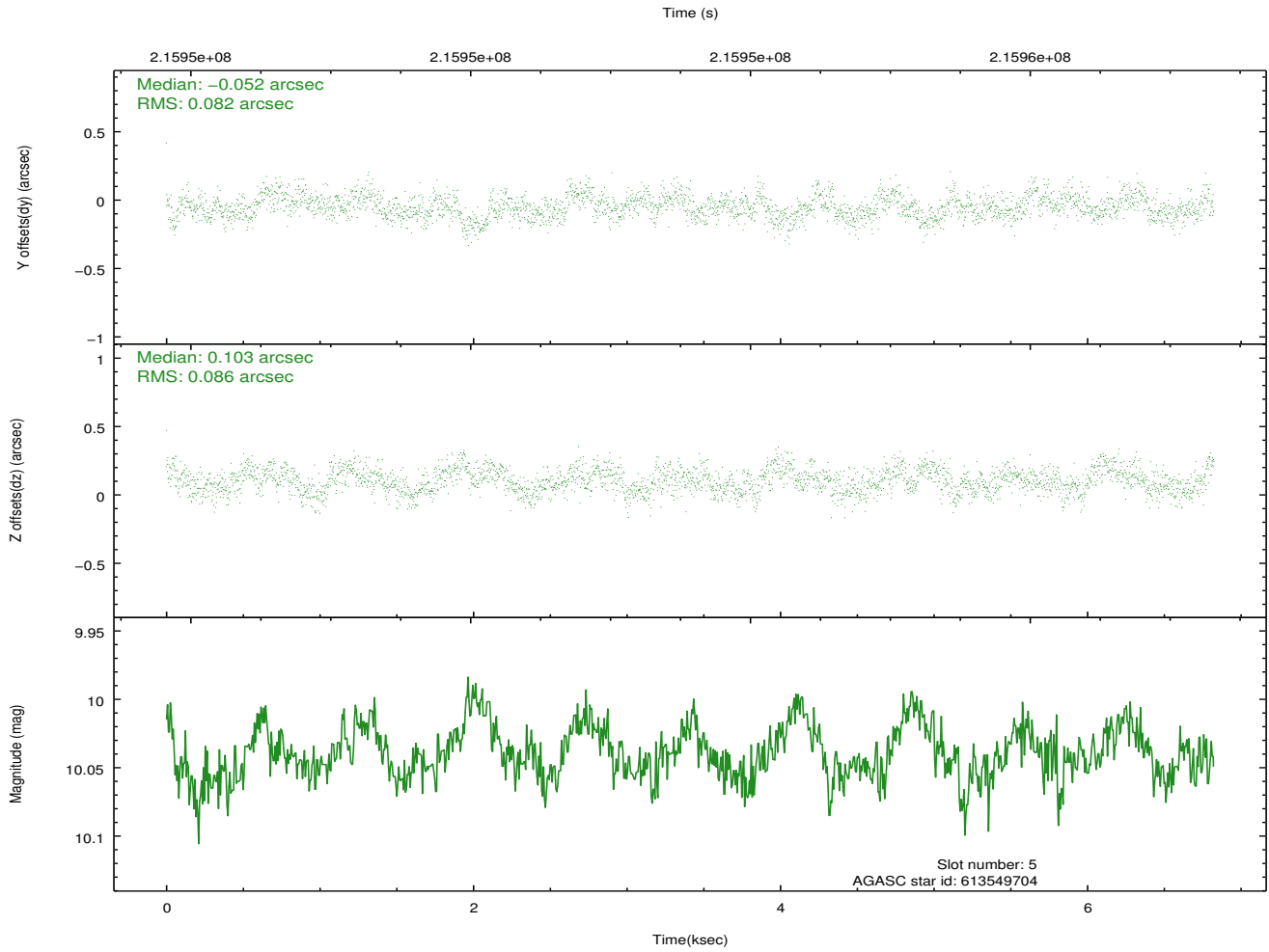
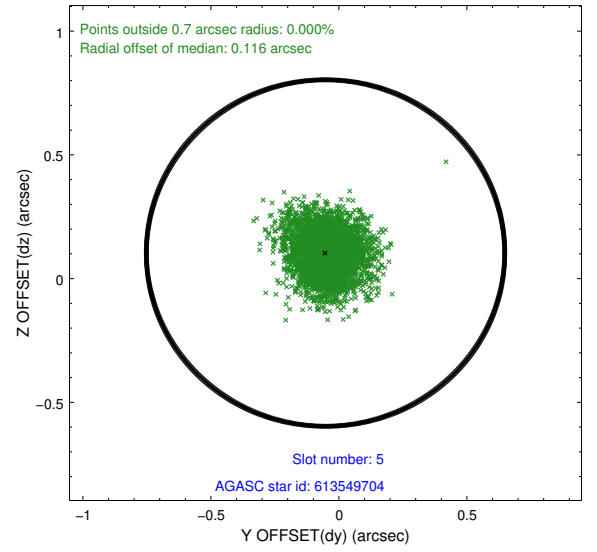
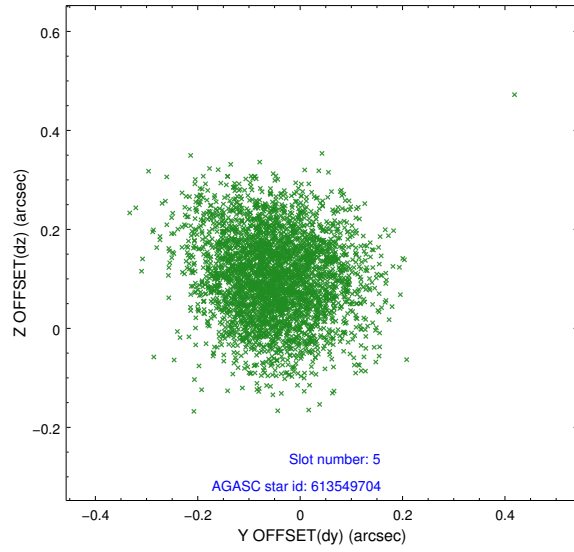
### 2.4.1 Slot 3



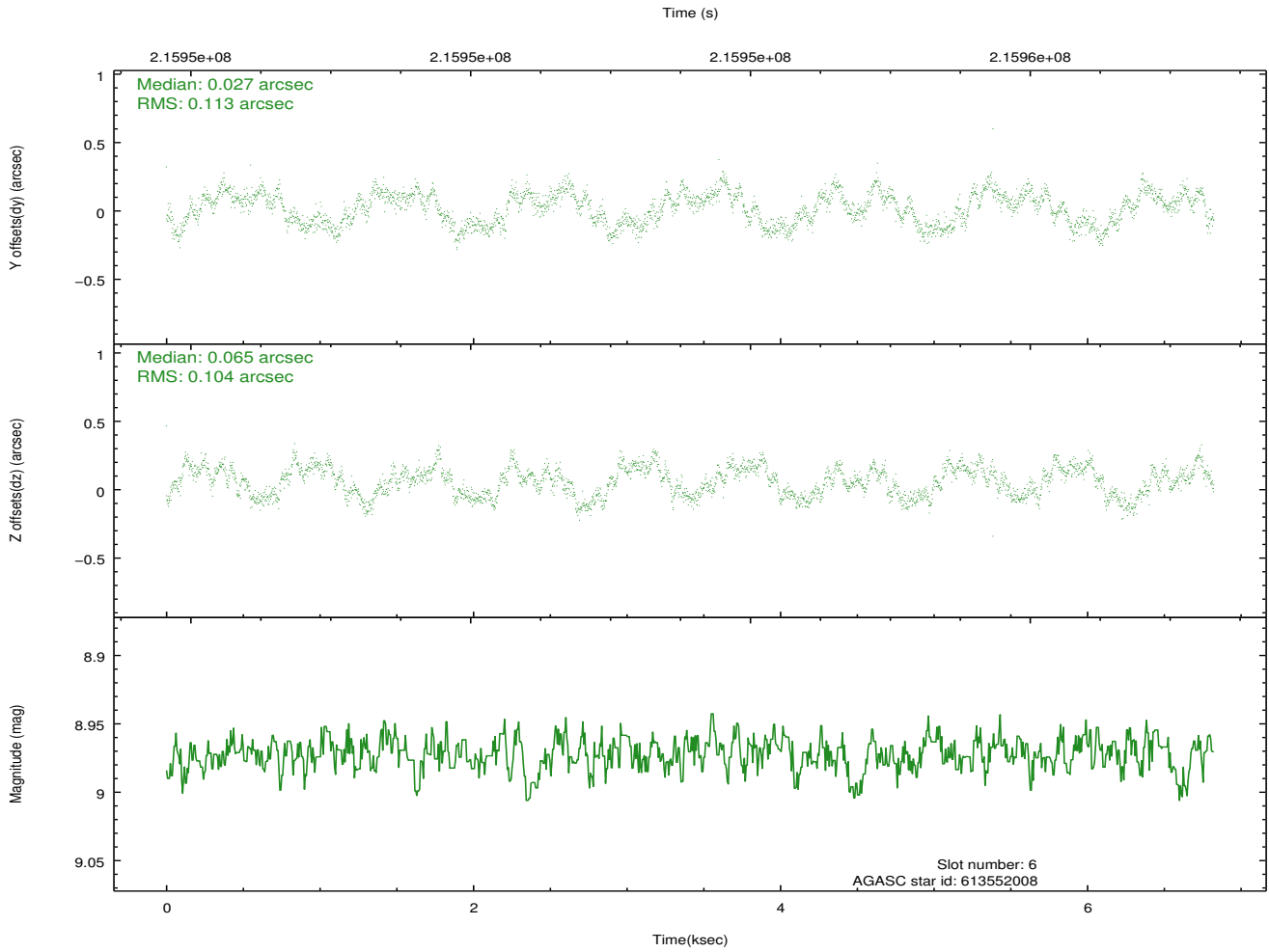
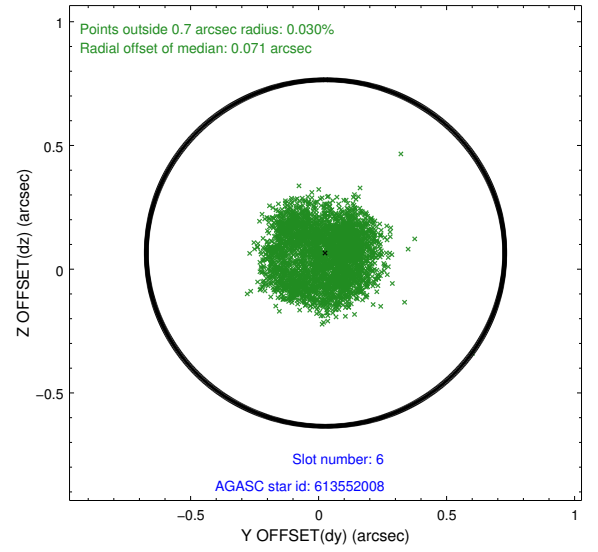
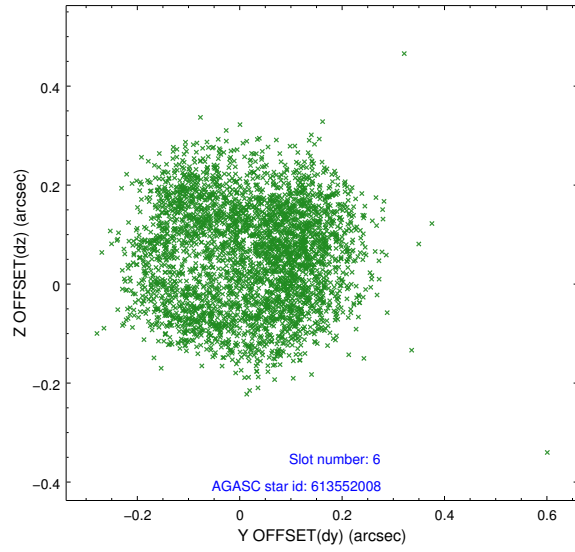
## 2.4.2 Slot 4



### 2.4.3 Slot 5

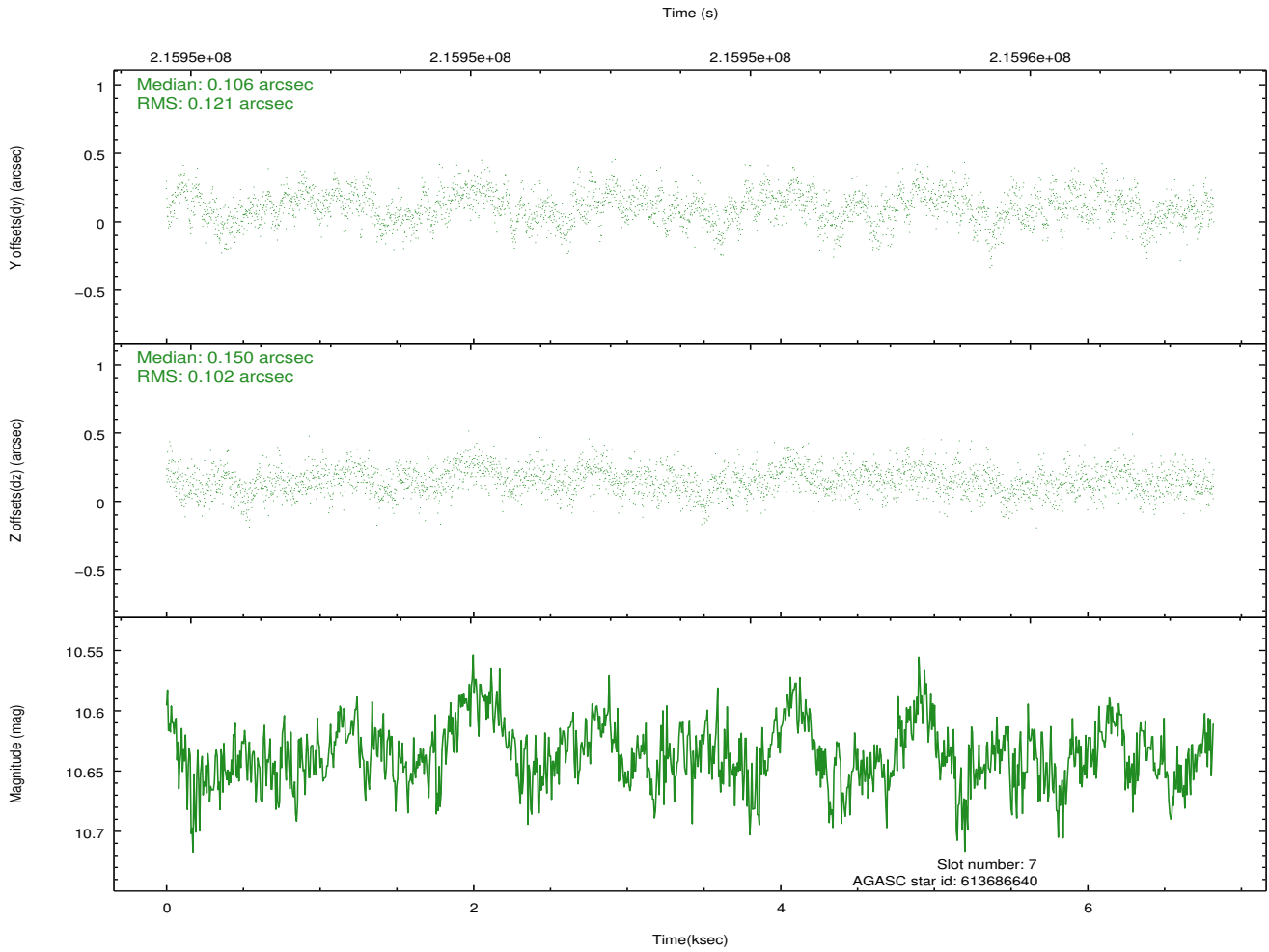
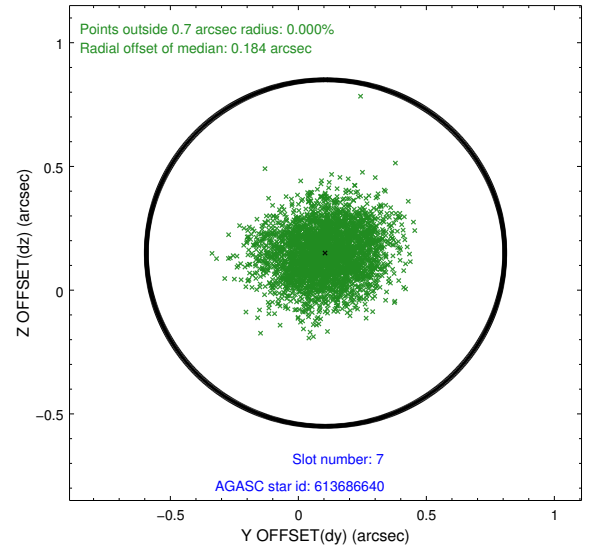
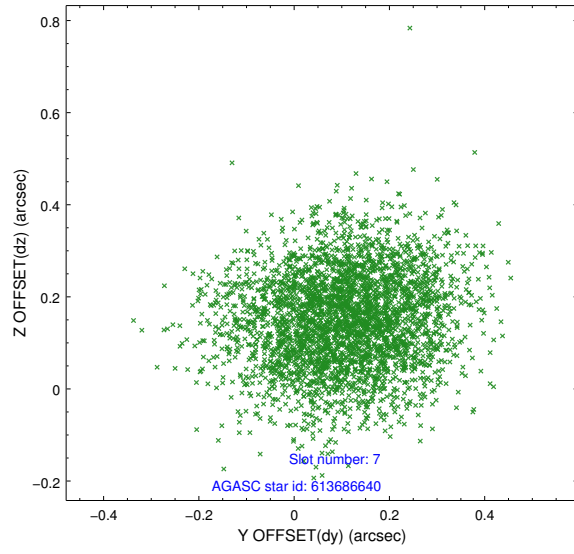


## 2.4.4 Slot 6



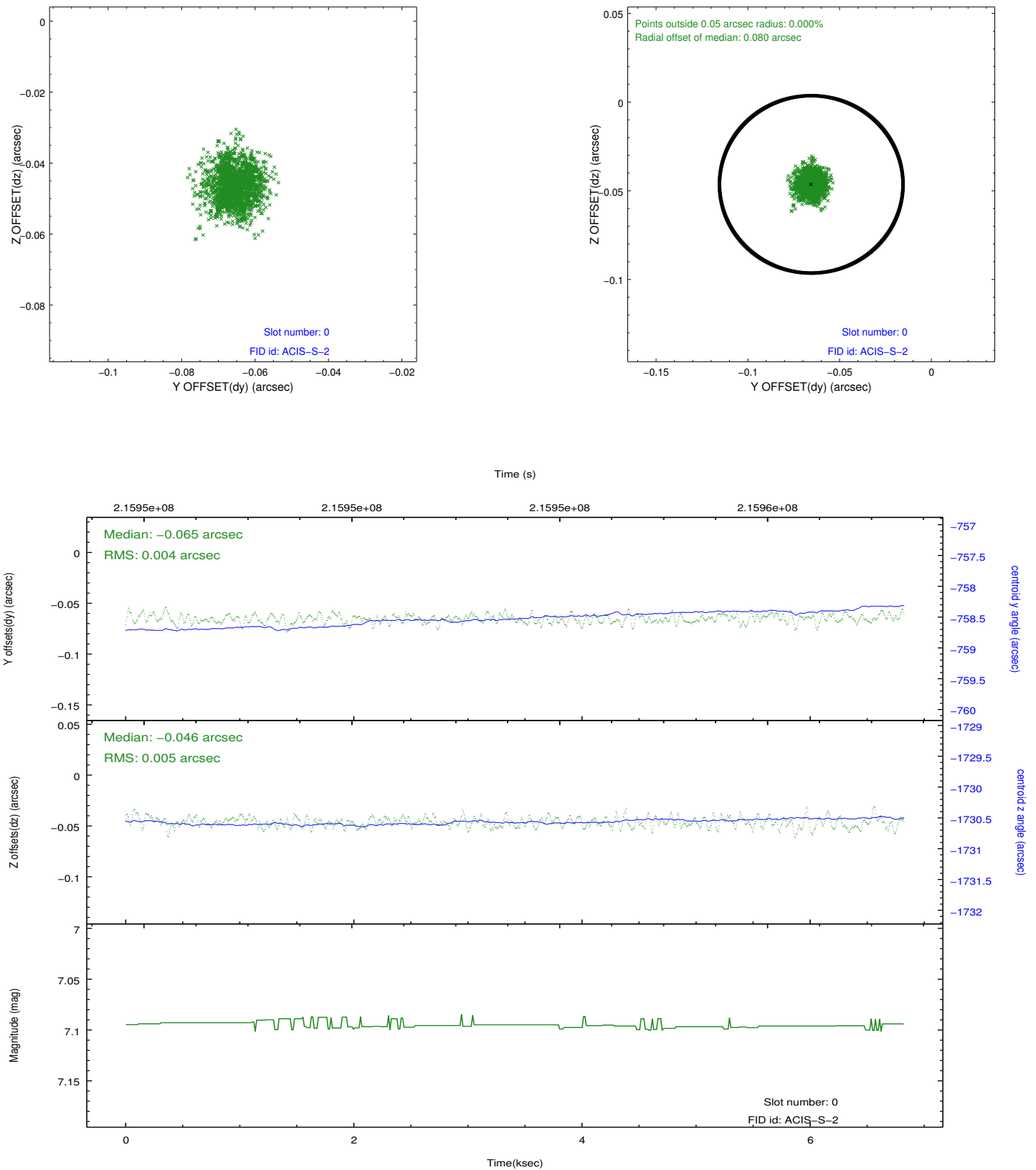


## 2.4.5 Slot 7

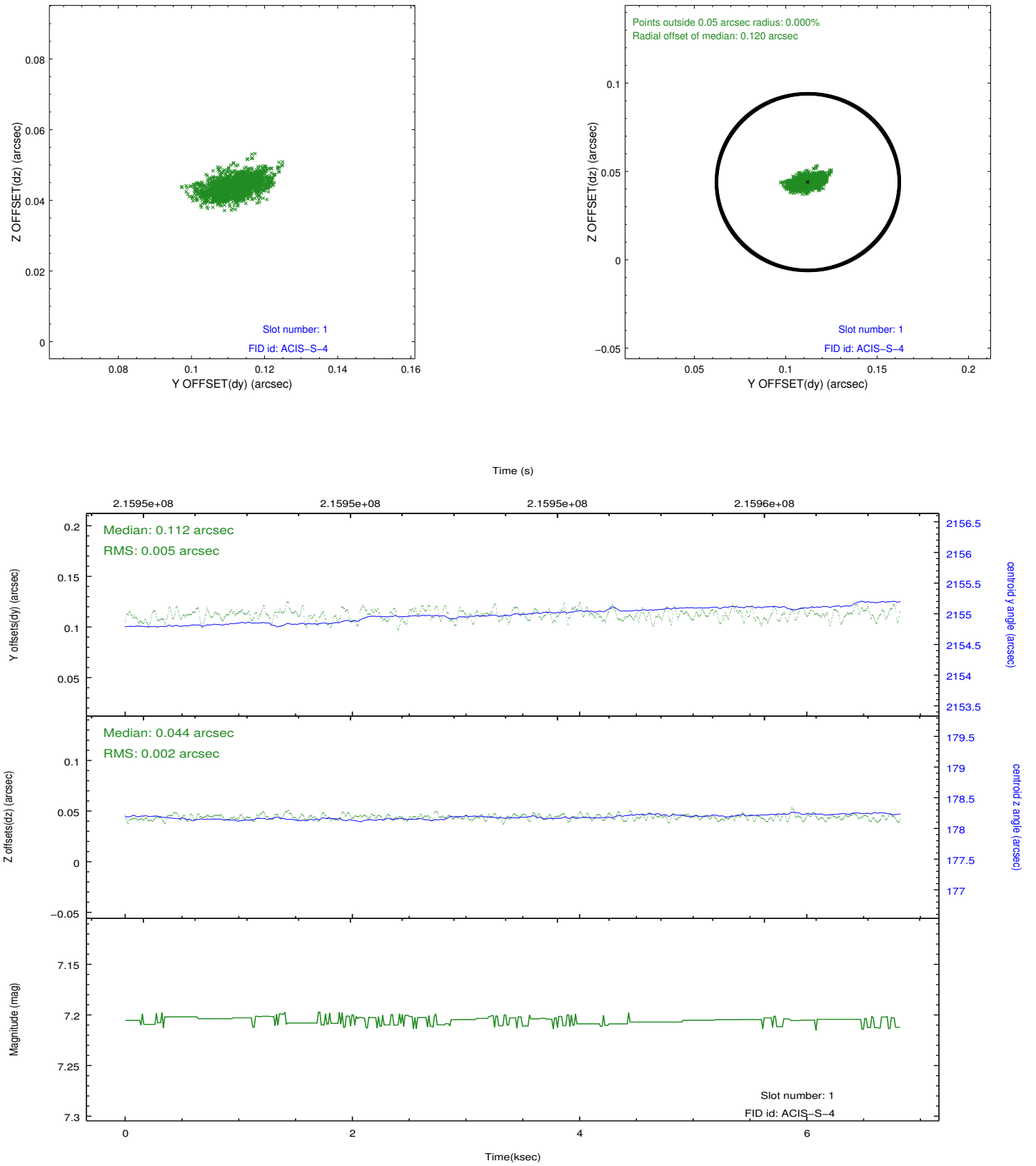


## 2.5 FID Slots

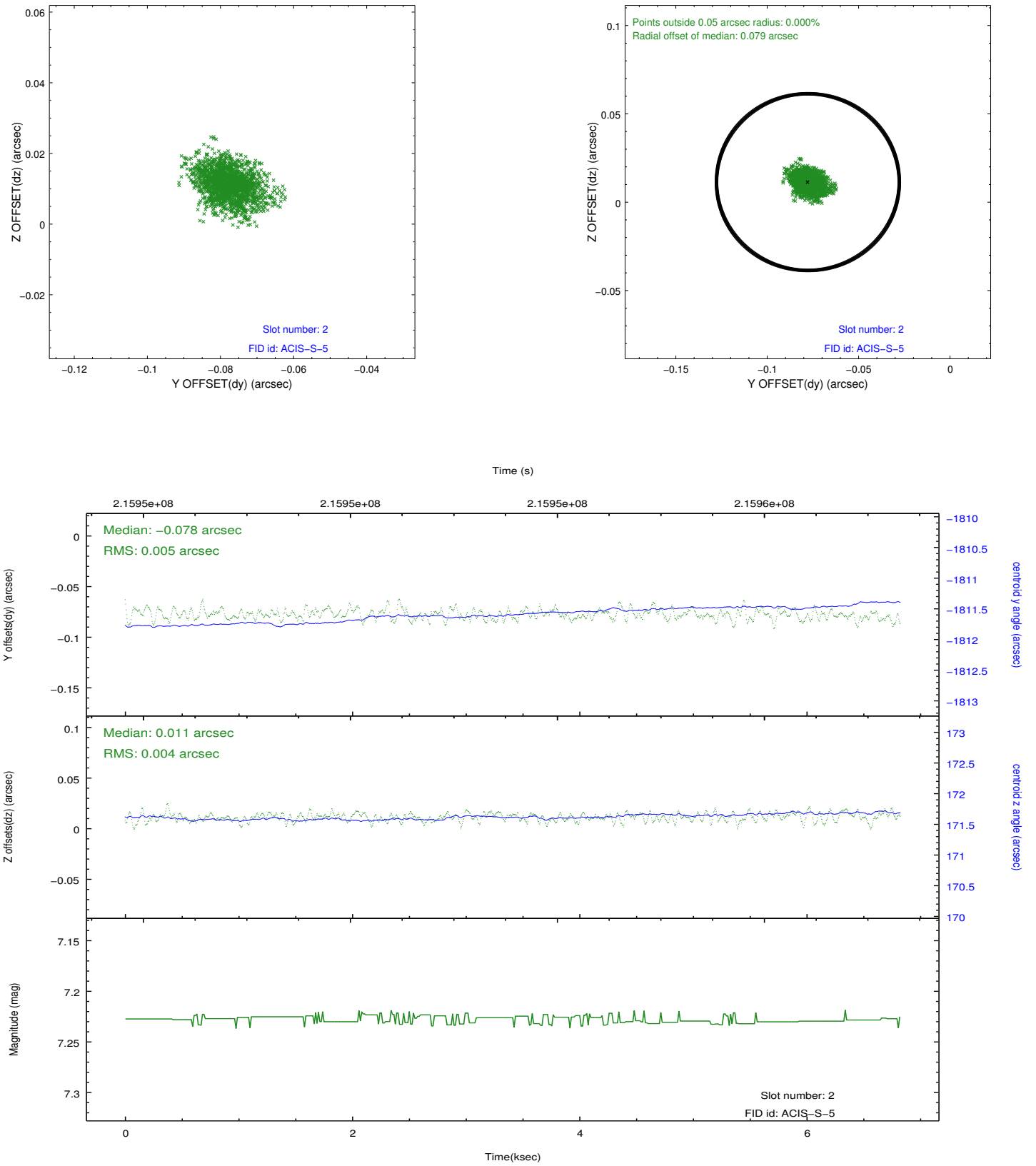
### 2.5.1 Slot 0



## 2.5.2 Slot 1



### 2.5.3 Slot 2



## A Summary

### A.1 Status

V&V Scientist	Jen Lauer
V&V Date (YYYY-MM-DD)	2013.01.03
V&V Edition	1
V&V Disposition and Status	OK
V&V Charge Time	5.955199

### A.2 Comments