

V&V Reference Report

L2 ASCDS Version : 7.6.7.1

Observation 4812 - L2 Version 002
Chandra X-Ray Center

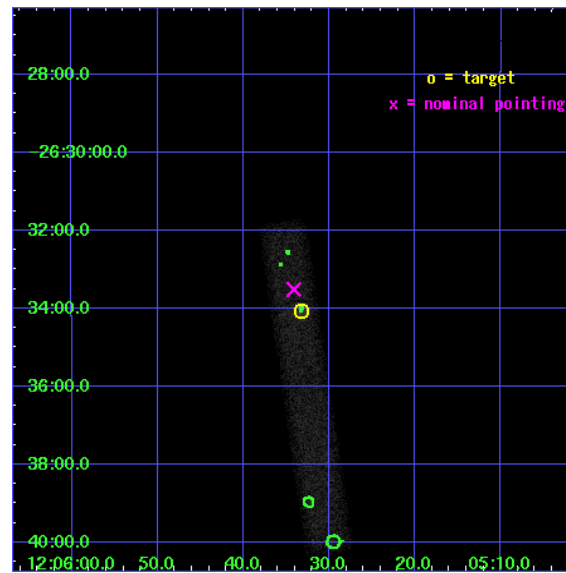
L2 Processing Date : Apr 10 2006

Contents

1	Front	2
2	OBI	3
2.1	OBI	3
2.1.1	Images	3
2.1.2	Bias	3
2.1.3	Parameters	4
2.1.4	Events	4
2.2	Compared Parameters	5
2.3	Aspect	6
2.4	Star Slots	9
2.4.1	Slot 3	9
2.4.2	Slot 4	10
2.4.3	Slot 5	11
2.4.4	Slot 6	12
2.4.5	Slot 7	13
2.5	FID Slots	14
2.5.1	Slot 0	14
2.5.2	Slot 1	15
2.5.3	Slot 2	16
3	Point Sources	17
A	Summary	18
A.1	Status	18
A.2	Comments	18

1 Front

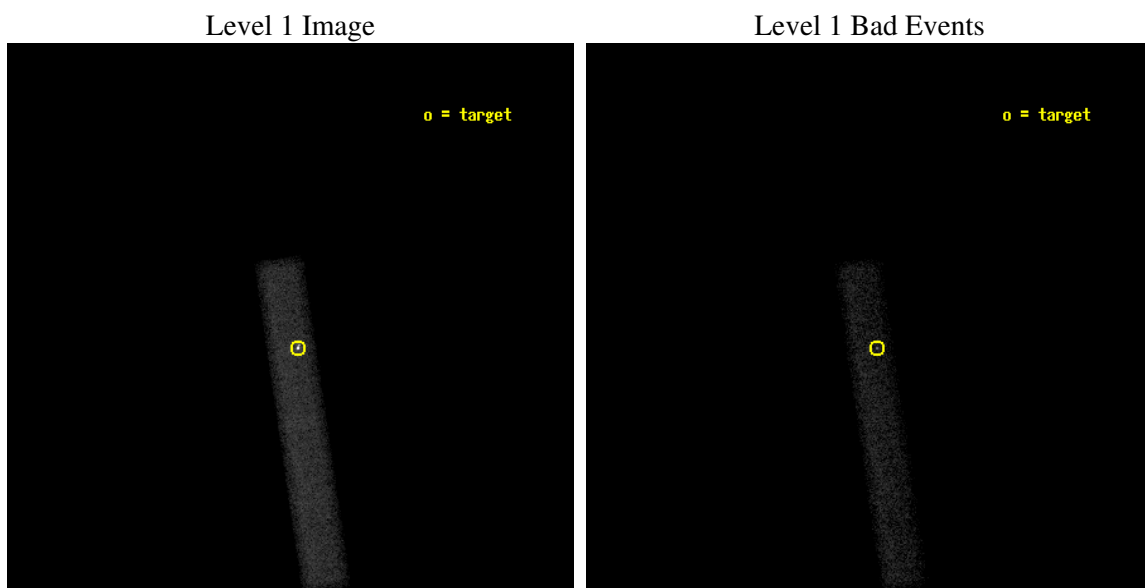
seq_num	700895
obs_id	4812
title	Detailed Study of X-ray Jets from a Complete Survey
observer	Dr. Eric Perlman
object	PKS 1202-262
dtcycle	0
cycle	P
ra_targ	181.38875
dec_targ	-26.567833
ra_nom	181.39219463967
dec_nom	-26.55869285208
roll_nom	81.550988715048
revision	2
ontime	39168.154363513
livetime	35523.448543001
ontime7	39168.154363513
l2events	31392



2 OBI

2.1 OBI

2.1.1 Images



2.1.2 Bias

Chip 7



2.1.3 Parameters

obi_num	0
ascdsver	7.6.7.1
caldbver	3.2.1
date	2006-04-10T19:40:17
revision	2

sched_exp_time	39000.000000
ontime	39716.930765152
ontime7	39716.930765152
l1events	64041

2.1.4 Events

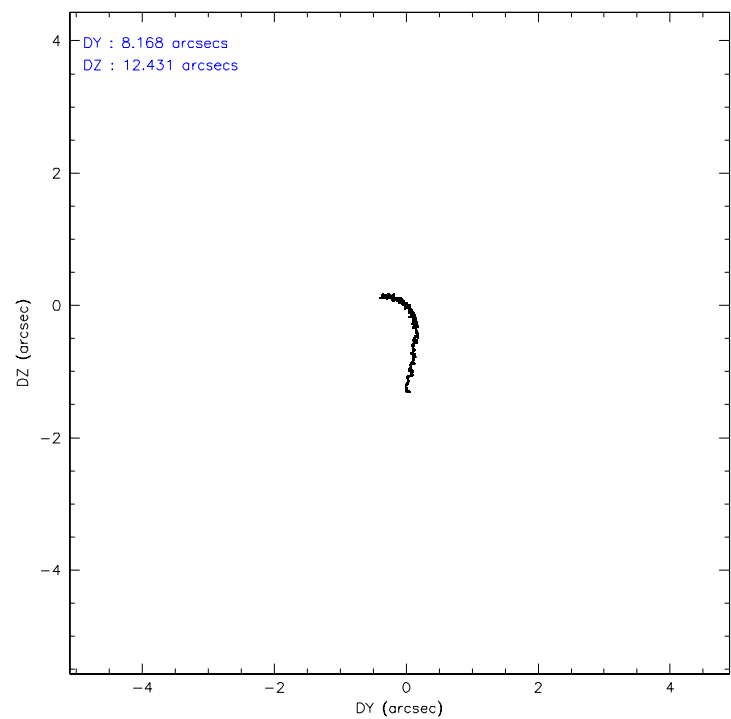
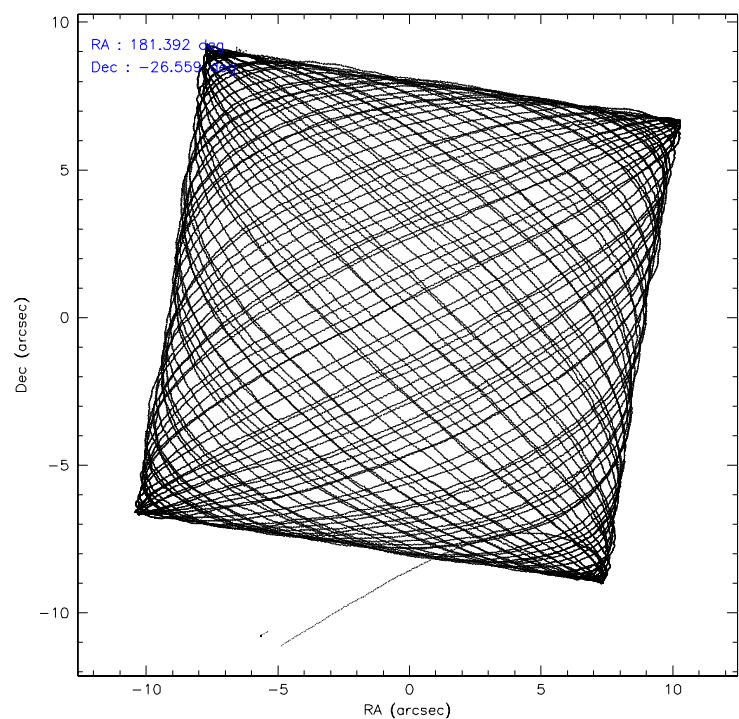
	ccd 7
level 1 events	64041
rejected events	31251
rejected %	48%

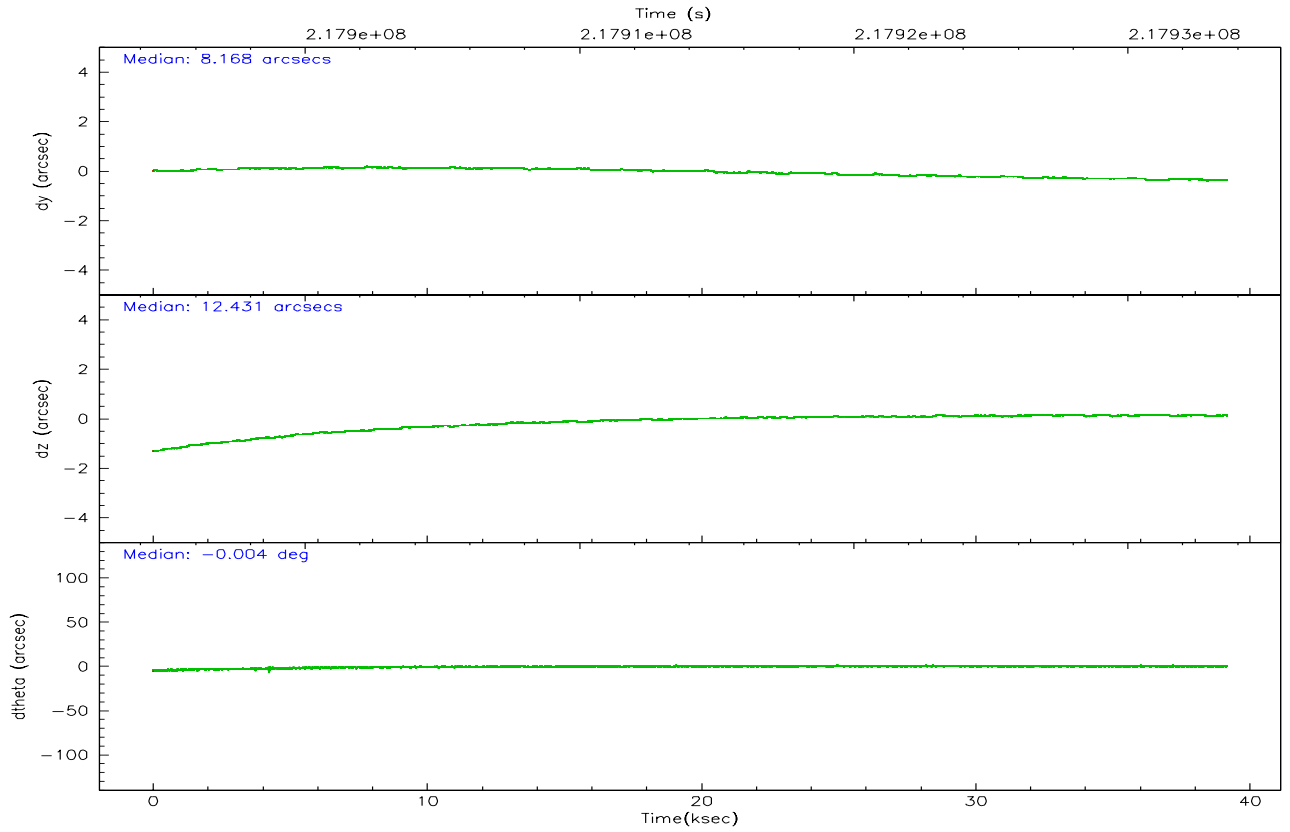
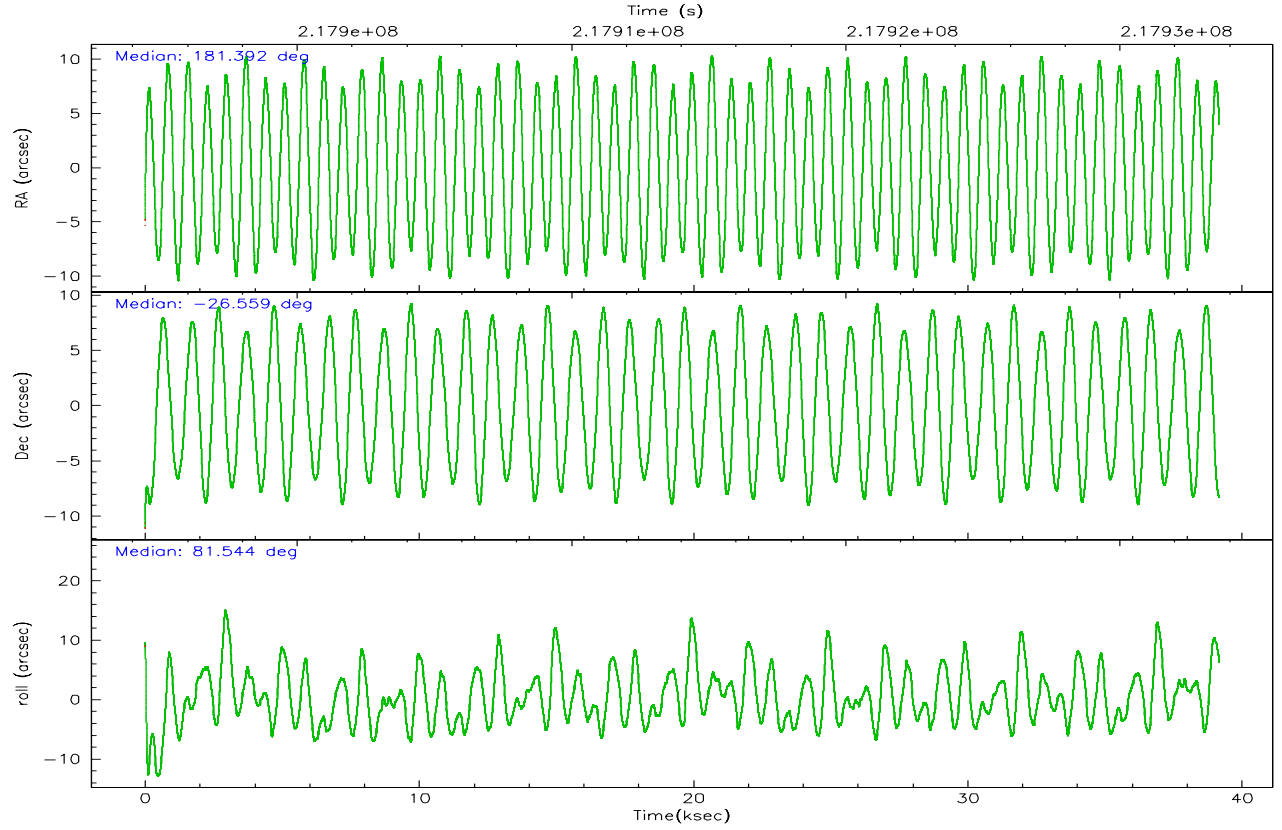
	ccd 7
grade 0 events	4542
	7%
grade 1 events	62
	0%
grade 2 events	7807
	12%
grade 3 events	3588
	5%
grade 4 events	3326
	5%
grade 5 events	4035
	6%
grade 6 events	13883
	21%
grade 7 events	26798
	41%

2.2 Compared Parameters

Parameter	Planned	Actual	Parameter	Planned	Actual
Instrument	ACIS	ACIS	Obspar format version number	6	6
Detector	ACIS-7	ACIS-7	Obspar file type	PREDICTED	ACTUAL
Grating	NONE	NONE	Obspar update status	NONE	UPDATED
Data mode	VFAINT	VFAINT	On-chip summing requested	N	N
Observation mode	POINTING	POINTING	Subarray requested	1/8	1/8
Pointing RA	181.403749	181.3921946396722	Subarray start row	0	449
Pointing Dec	-26.583855	-26.55869285207972	Subarray row count	1024	128
Pointing Roll	81.399520	81.55098871504789	Alternating exposures requested	N	N
SIM focus pos (mm)	-0.684267	-0.6828225247311905	Primary exposure time	0.000000	0.4
SIM defocus (mm)	0	0.001444936568705701			
SIM translation stage pos (mm)	-190.132523	-190.1400660498719			
SIM translation stage offset (mm)	0	0.00754346686406393			
Observation start time	217894612.184000	217893720.70058			
Observation start date	2004-11-26T22:15:48	2004-11-26T22:02:00			
Observation end time	217933612.184000	217934527.48991			
Observation end date	2004-11-27T09:05:48	2004-11-27T09:22:07			
Read mode	TIMED	TIMED			

2.3 Aspect



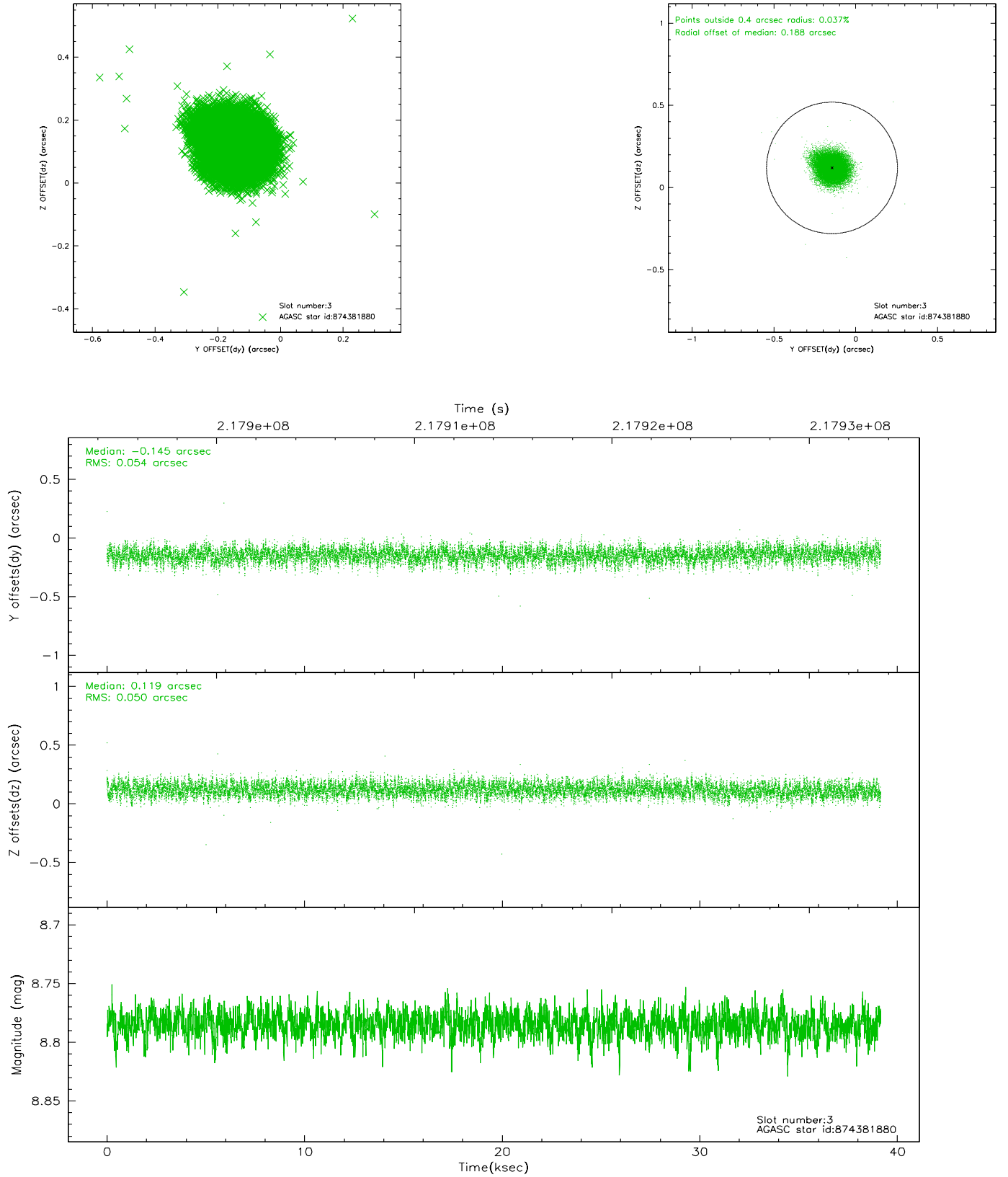


Slot Statistics

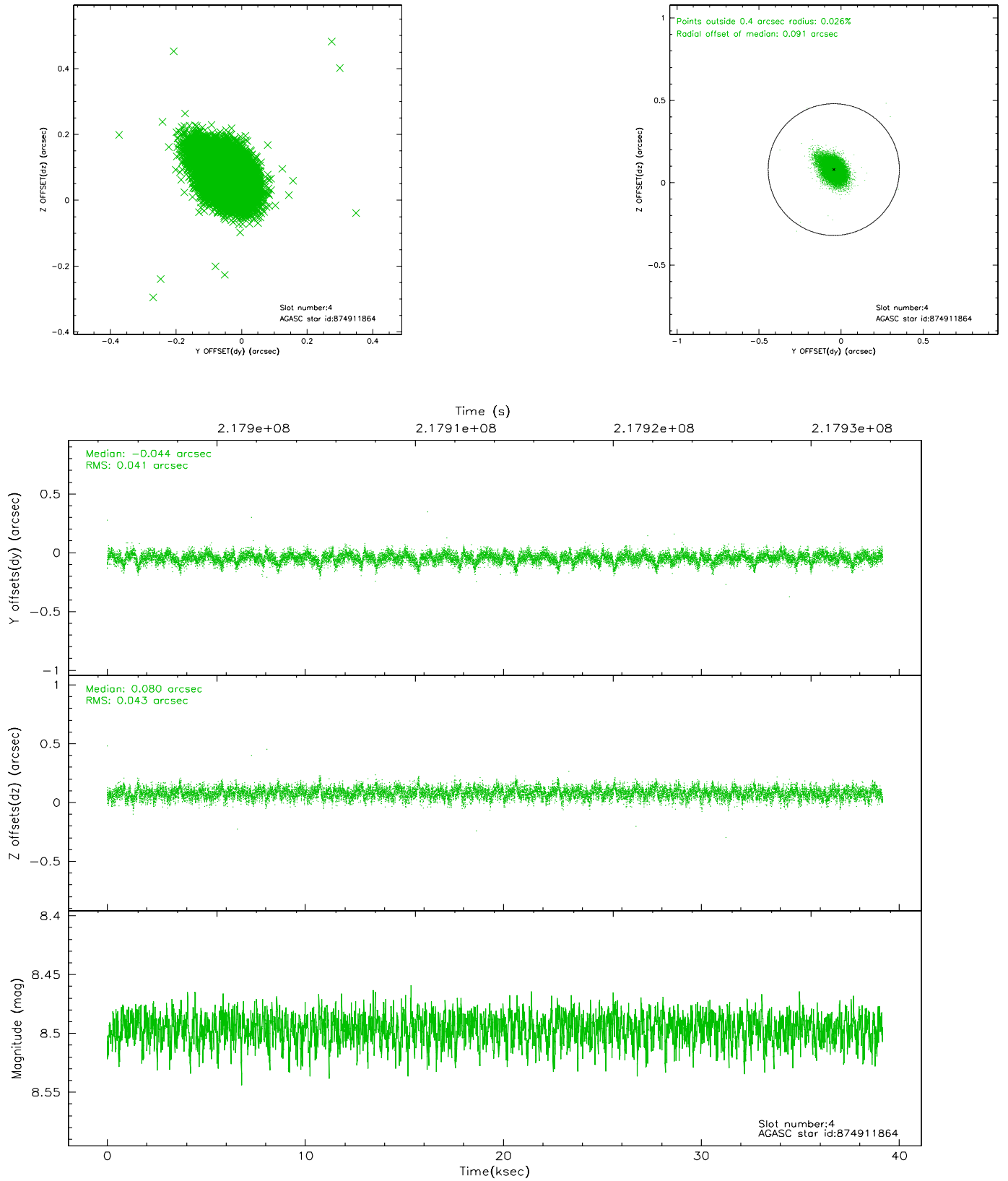
slot	status	id	mag	n_pts	med_dy	med_dz	dr1	dr2	ra	dec	mean_y	mean_z
0	FID	ACIS-S-2	7.10	9553	0.006	-0.001	0.013	0.023	0.000000	0.000000	-760.90	-1733.57
1	FID	ACIS-S-4	7.20	9553	0.039	-0.002	0.013	0.022	0.000000	0.000000	2152.41	174.88
2	FID	ACIS-S-5	7.23	9553	-0.076	0.014	0.012	0.021	0.000000	0.000000	-1813.79	168.60
3	GUIDE	874381880	8.78	19100	-0.145	0.119	0.078	0.125	181.999738	-26.203366	1638.25	-1698.19
4	GUIDE	874911864	8.50	19104	-0.044	0.080	0.061	0.106	181.589038	-26.398733	748.40	-490.71
5	GUIDE	874912296	9.40	19090	0.011	0.266	0.082	0.134	181.462305	-26.617404	-90.78	-203.81
6	GUIDE	874912992	8.68	19099	0.020	-0.149	0.066	0.108	181.349458	-26.681675	-373.92	120.17
7	GUIDE	874913272	9.93	19005	0.163	-0.314	0.138	0.221	180.758927	-26.765801	-962.46	1950.68

2.4 Star Slots

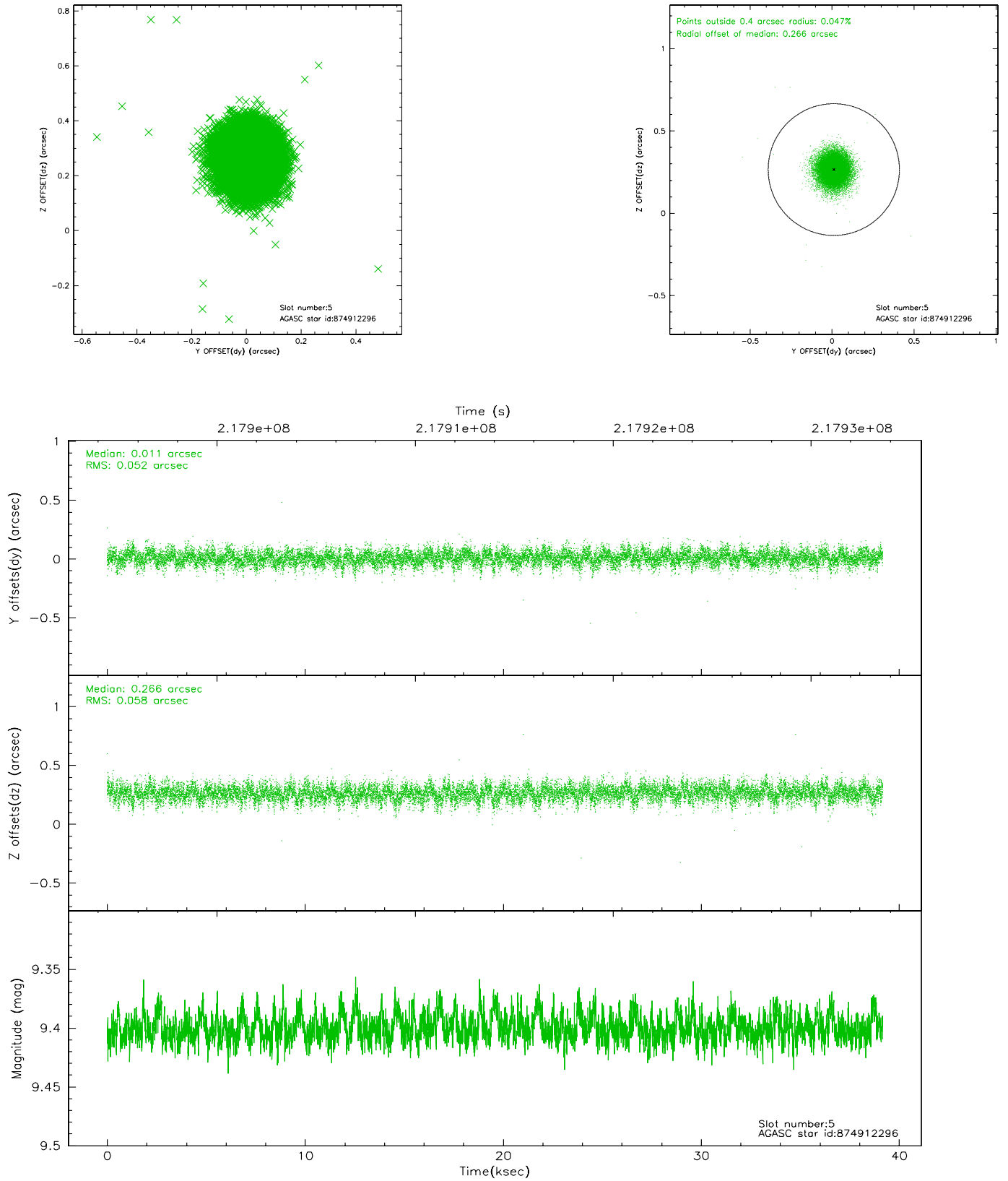
2.4.1 Slot 3



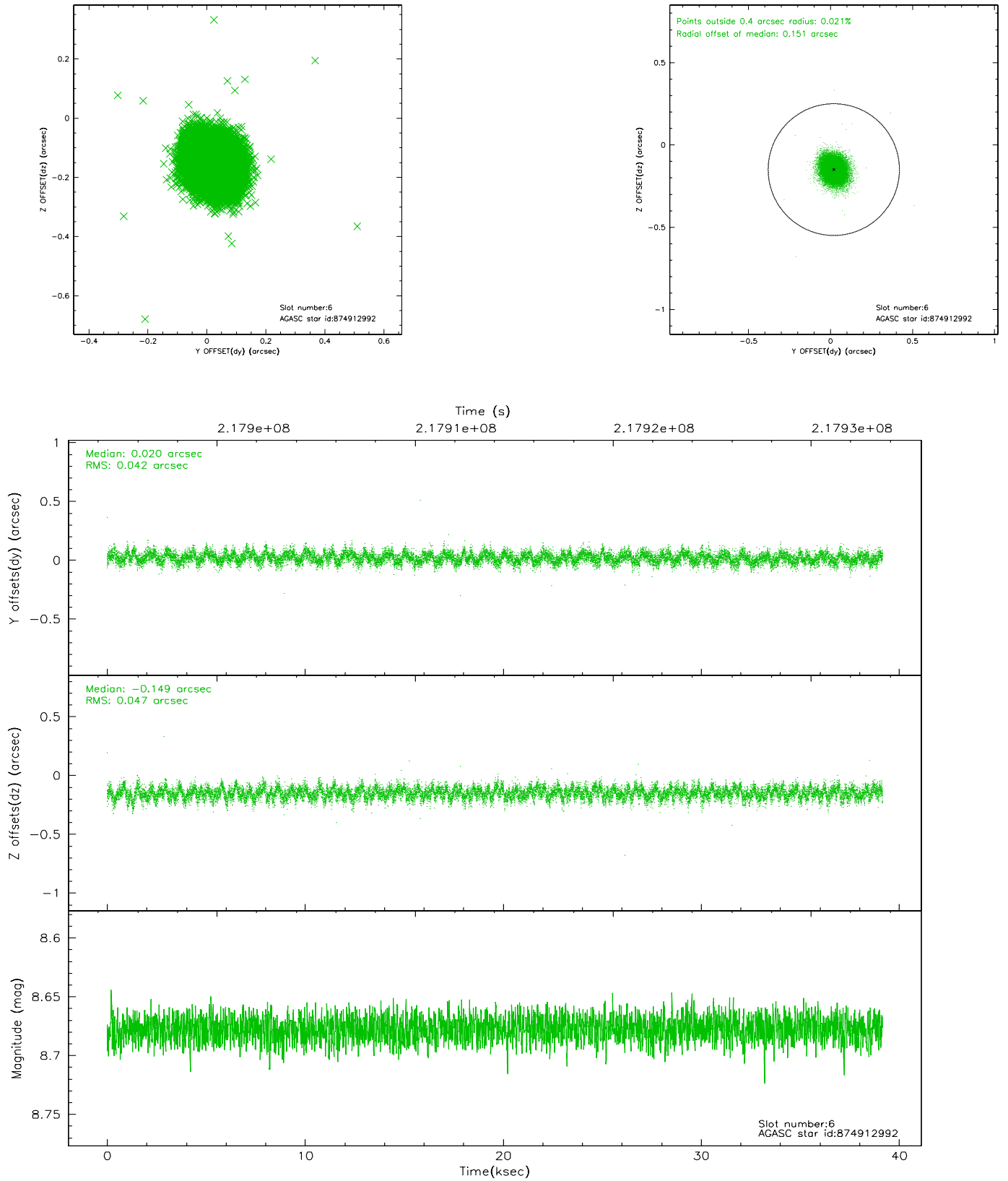
2.4.2 Slot 4



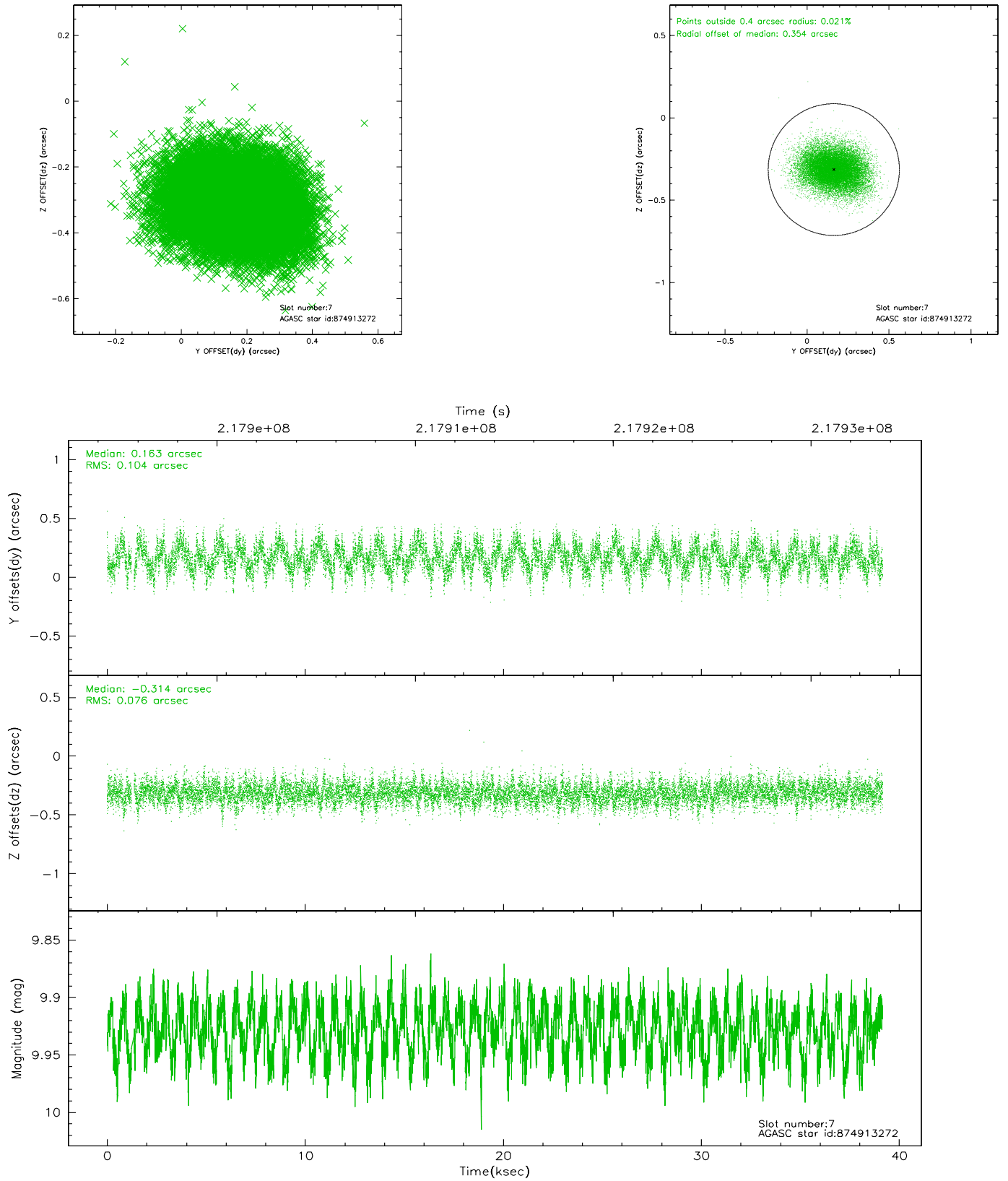
2.4.3 Slot 5



2.4.4 Slot 6

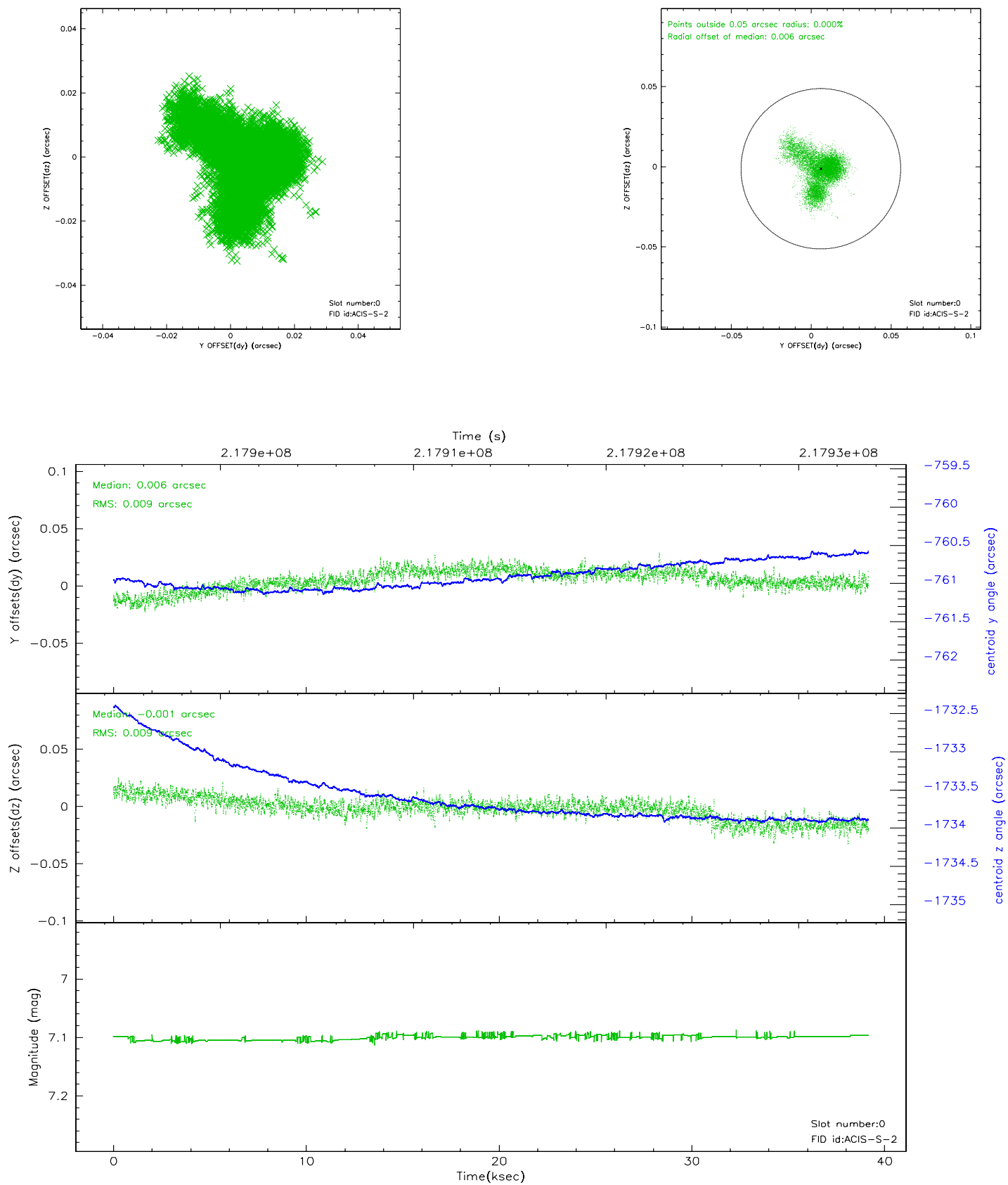


2.4.5 Slot 7

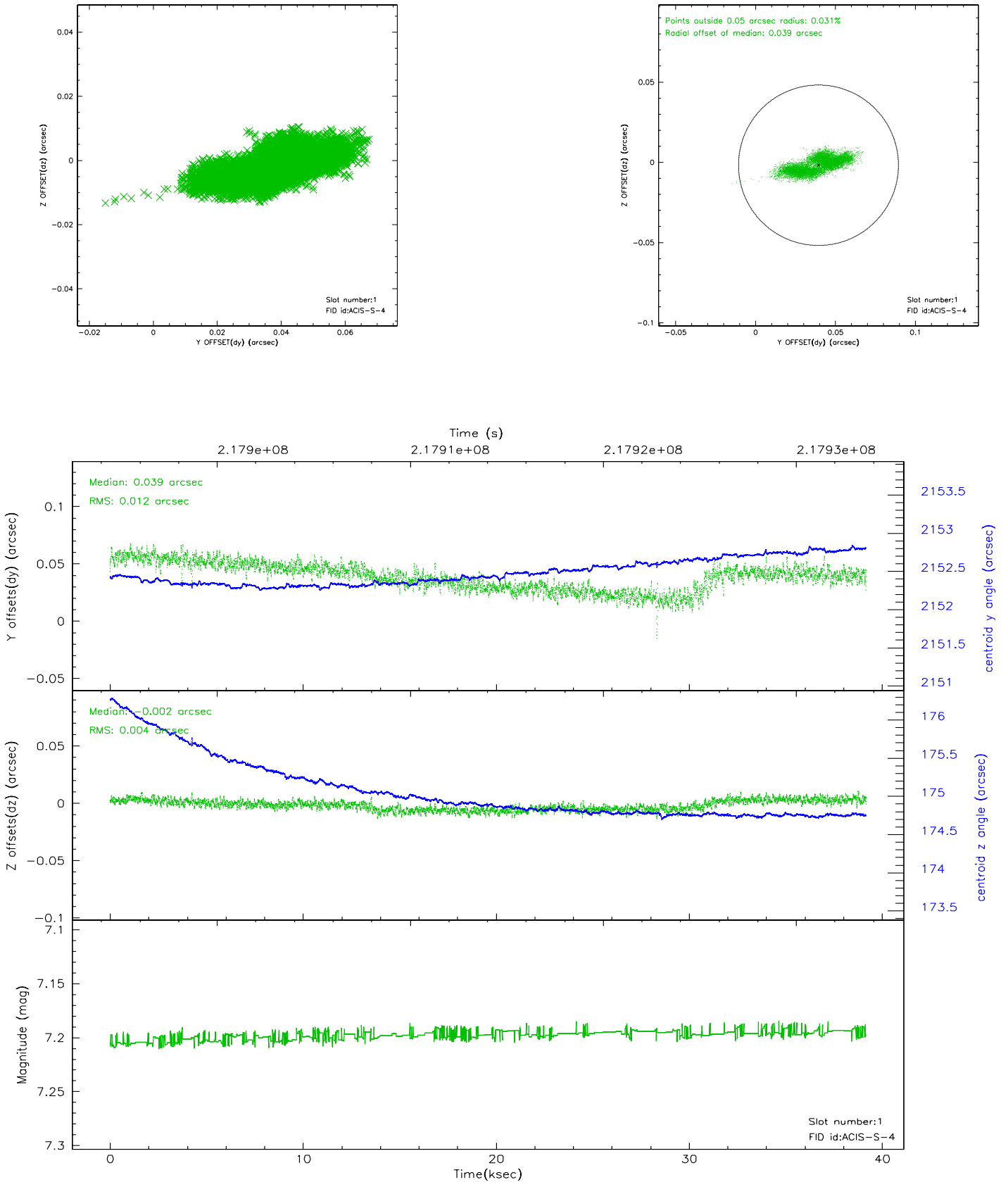


2.5 FID Slots

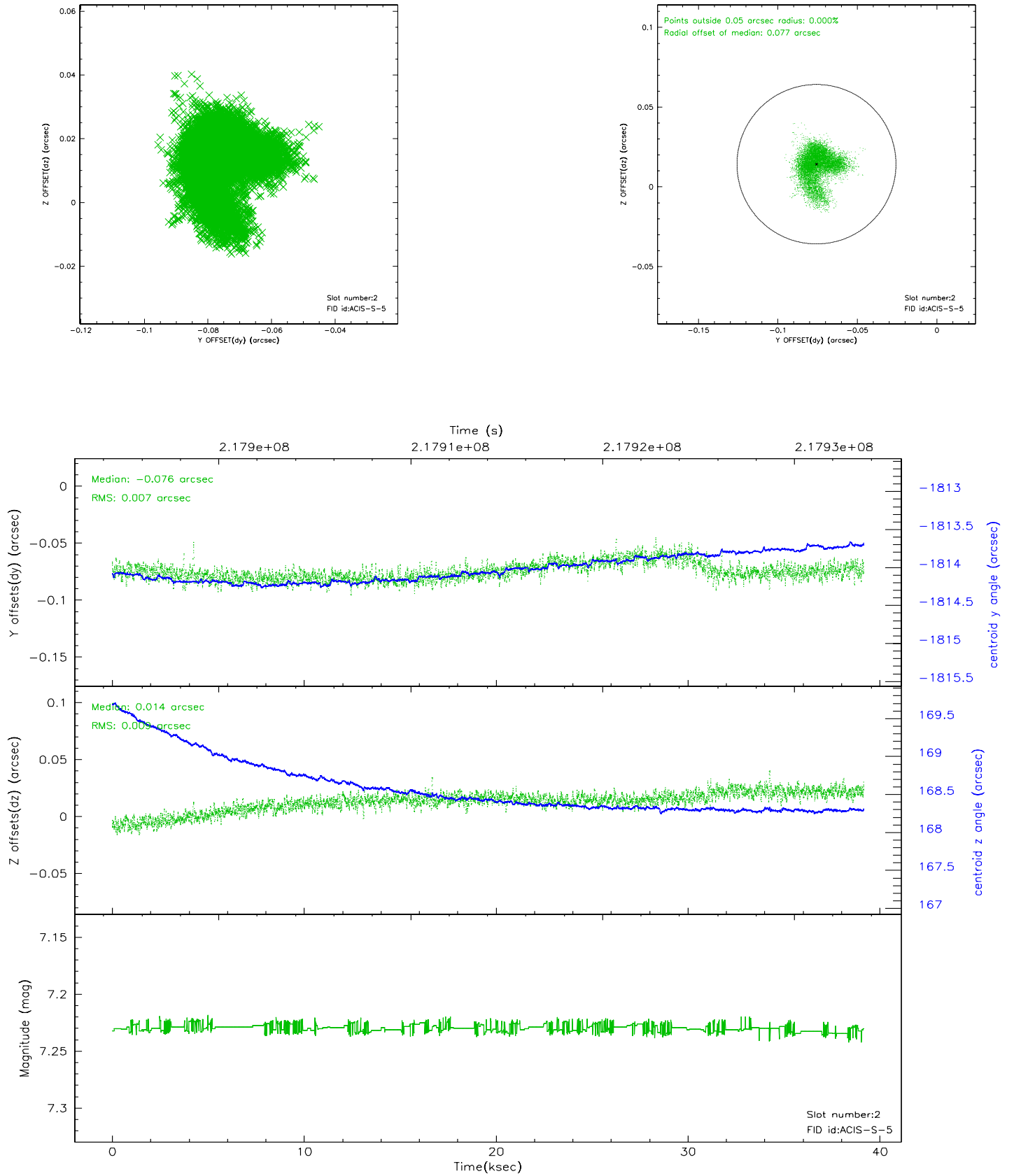
2.5.1 Slot 0



2.5.2 Slot 1



2.5.3 Slot 2



3 Point Sources

A Summary

A.1 Status

V&V Scientist	Beth Sundheim
V&V Date (YYYY-MM-DD)	2006.04.11
V&V Edition	1
V&V Disposition and Status	OK
V&V Charge Time	39.16815

A.2 Comments