

V&V Reference Report

L2 ASCDS Version : 7.6.8

Observation 4802 - L2 Version 001
Chandra X-Ray Center

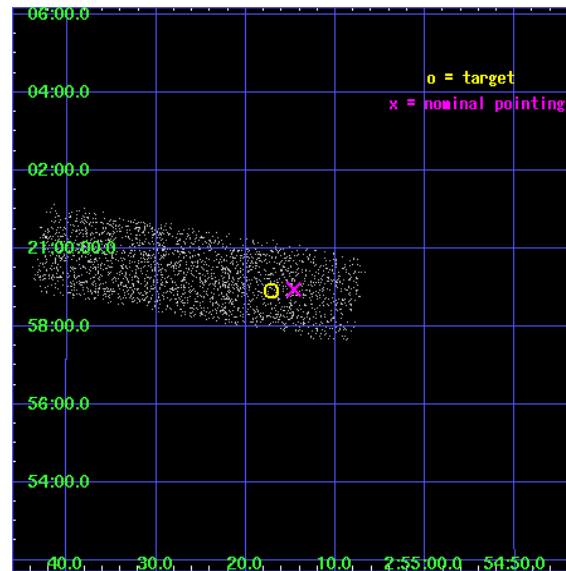
L2 Processing Date : Jun 30 2006

Contents

1	Front	2
2	OBI	3
2.1	OBI	3
2.1.1	Images	3
2.1.2	Bias	3
2.1.3	Parameters	4
2.1.4	Events	4
2.2	Compared Parameters	5
2.3	Aspect	6
2.4	Star Slots	9
2.4.1	Slot 3	9
2.4.2	Slot 4	10
2.4.3	Slot 5	11
2.4.4	Slot 6	12
2.4.5	Slot 7	13
2.5	FID Slots	14
2.5.1	Slot 0	14
2.5.2	Slot 1	15
2.5.3	Slot 2	16
3	Point Sources	17
A	Summary	18
A.1	Status	18
A.2	Comments	18

1 Front

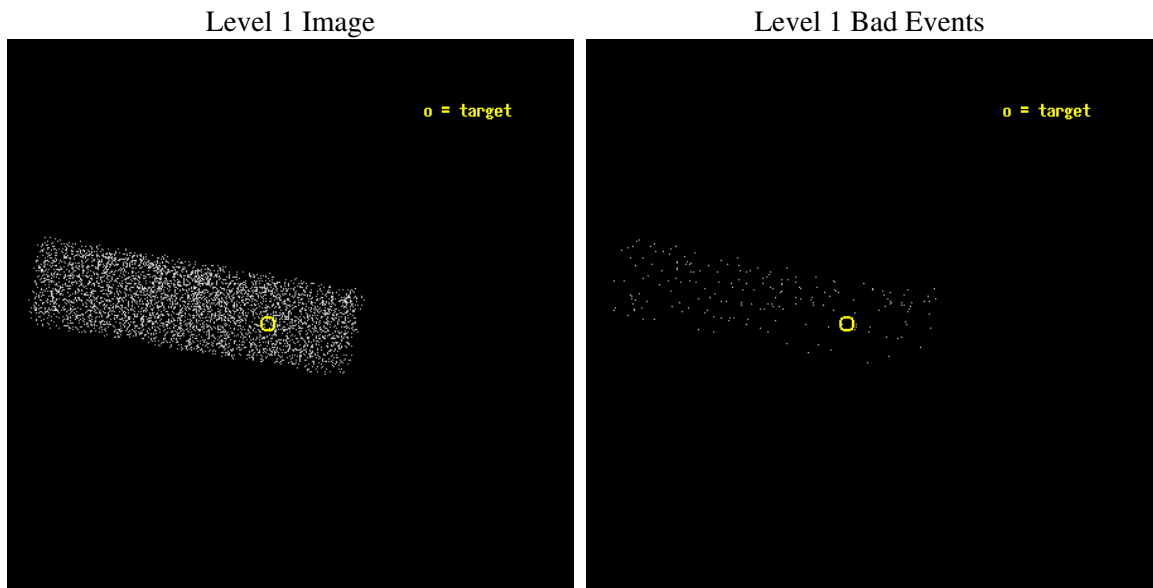
seq_num	700885
obs_id	4802
title	Unveiling the engine powering OH Gigamaser sources through X-rays. A well-defined Chandra survey
observer	Dr. Cristian Vignali
object	IRAS FSC 02524+2046
dtcycle	0
cycle	P
ra_targ	43.82125
dec_targ	20.982306
ra_nom	43.81107131219
dec_nom	20.982380686506
roll_nom	189.56028900935
revision	2
ontime	4530.4000675082
livetime	4309.3313683137
ontime7	4530.4000675082
l2events	2615



2 OBI

2.1 OBI

2.1.1 Images



2.1.2 Bias

Chip 7



2.1.3 Parameters

obi_num	1
ascdsver	7.6.8
caldbver	3.2.2
date	2006-06-30T09:50:42
revision	2

sched_exp_time	4350.000000
ontime	5378.4003431499
ontime7	5378.4003431499
l1events	6049

2.1.4 Events

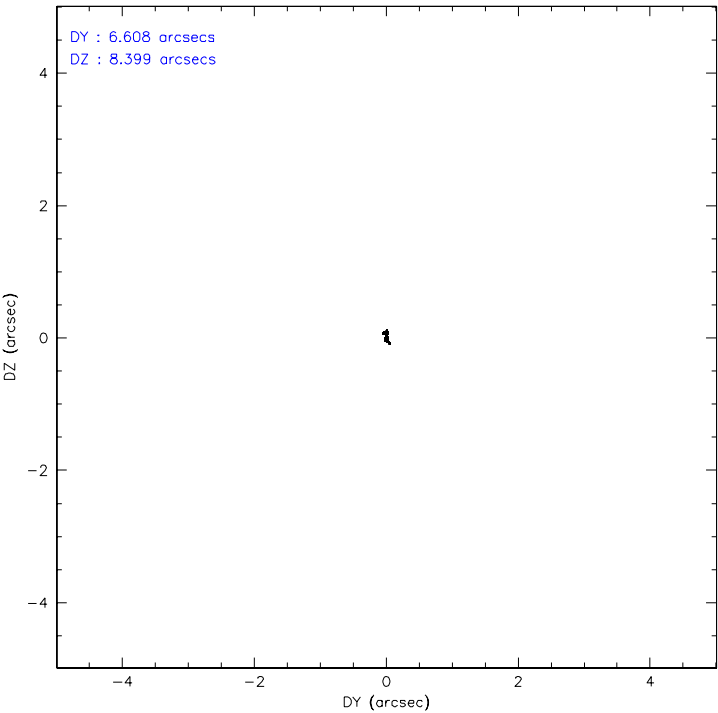
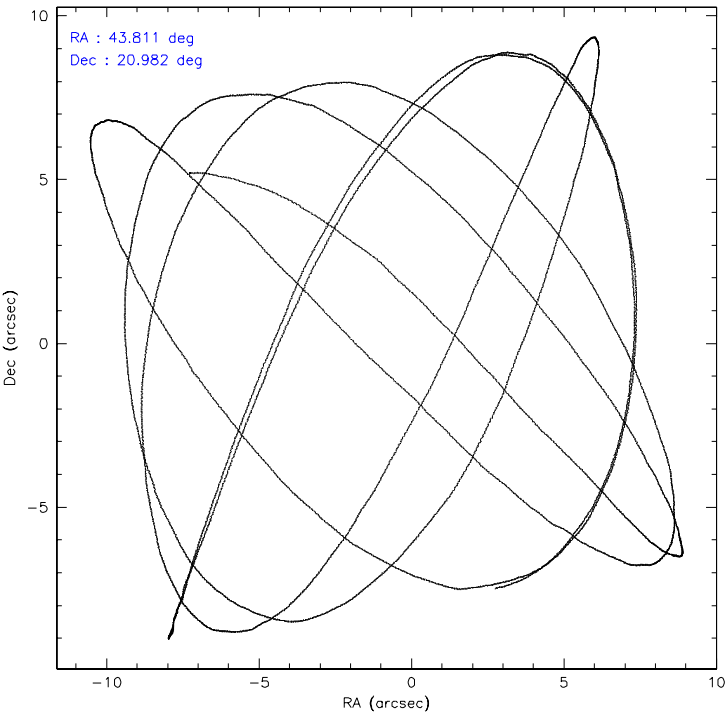
	ccd 7
level 1 events	6049
rejected events	3327
rejected %	55%

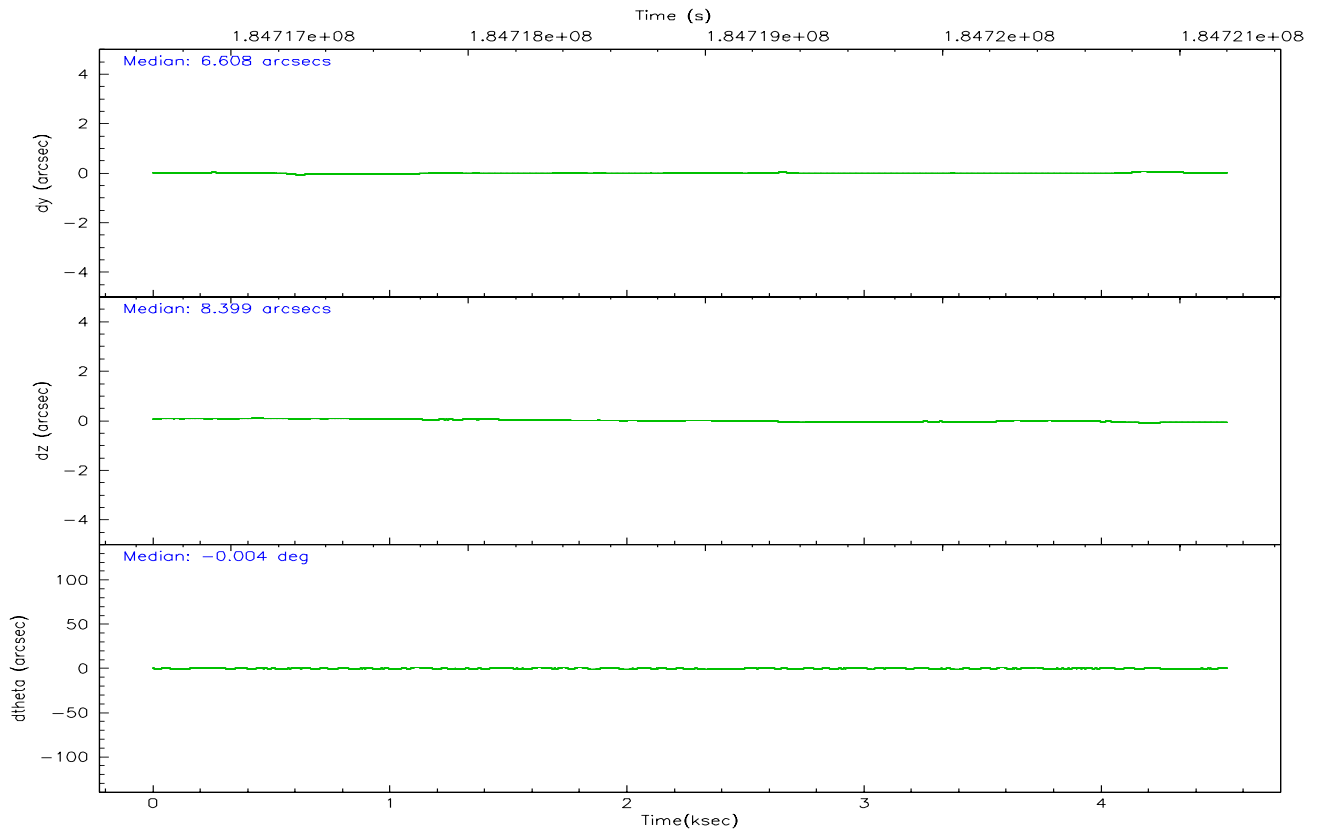
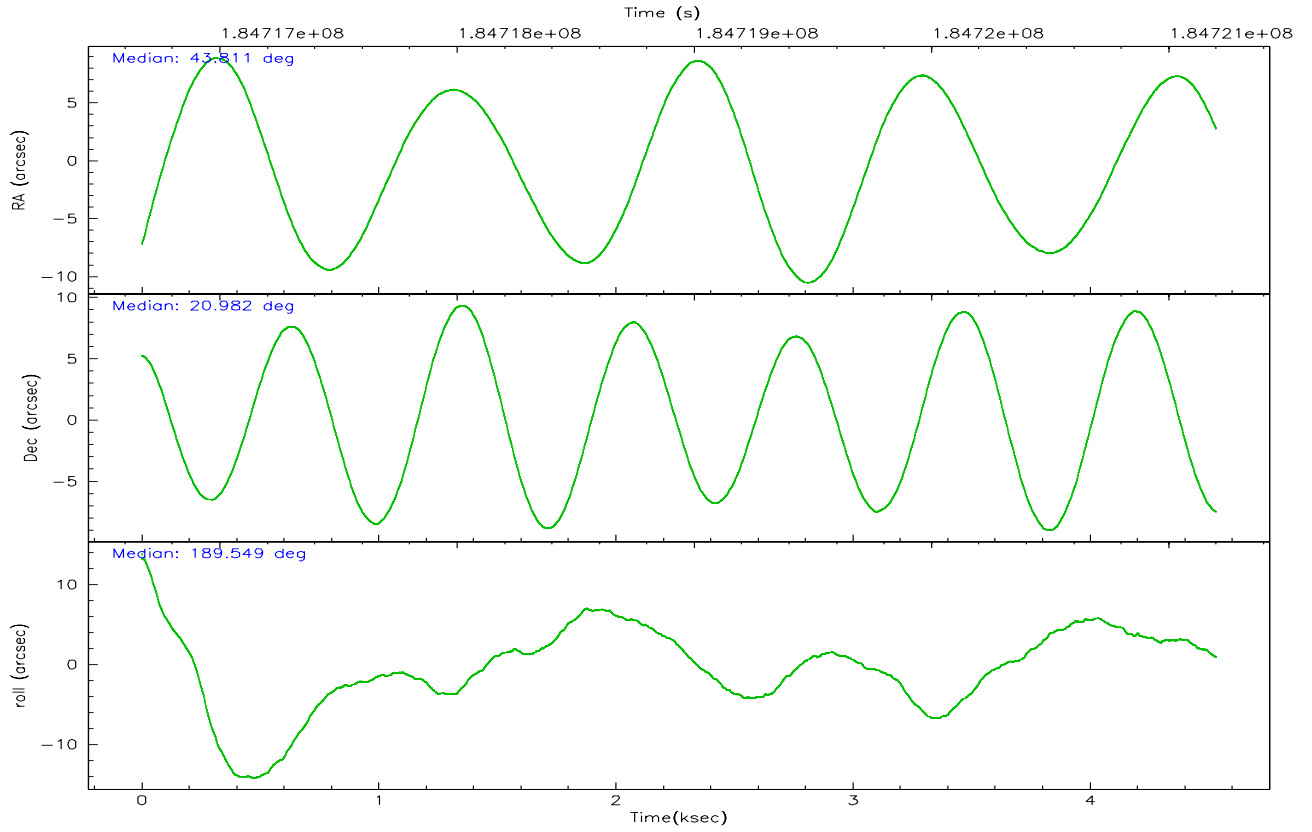
	ccd 7
grade 0 events	229
	3%
grade 1 events	4
	0%
grade 2 events	783
	12%
grade 3 events	314
	5%
grade 4 events	302
	4%
grade 5 events	483
	7%
grade 6 events	1594
	26%
grade 7 events	2340
	38%

2.2 Compared Parameters

Parameter	Planned	Actual	Parameter	Planned	Actual
Instrument	ACIS	ACIS	Obspar format version number	6	6
Detector	ACIS-7	ACIS-7	Obspar file type	PREDICTED	ACTUAL
Grating	NONE	NONE	Obspar update status	NONE	UPDATED
Data mode	FAINT	FAINT	On-chip summing requested	N	N
Observation mode	POINTING	POINTING	Subarray requested	1/4	1/4
Pointing RA	43.833130	43.81107131219014	Subarray start row	0	385
Pointing Dec	21.000015	20.98238068650636	Subarray row count	1024	256
Pointing Roll	189.395739	189.5602890093502	Alternating exposures requested	N	N
SIM focus pos (mm)	-0.684267	-0.6828225247311905	Primary exposure time	0.000000	0.8
SIM defocus (mm)	0	0.001444936568705701			
SIM translation stage pos (mm)	-190.132523	-190.1400660498719			
SIM translation stage offset (mm)	0	0.00754346686406393			
Observation start time	184716854.184000	184715794.56142			
Observation start date	2003-11-08T22:13:10	2003-11-08T21:56:34			
Observation end time	184721204.184000	184721847.69919			
Observation end date	2003-11-08T23:25:40	2003-11-08T23:37:27			
Read mode	TIMED	TIMED			

2.3 Aspect



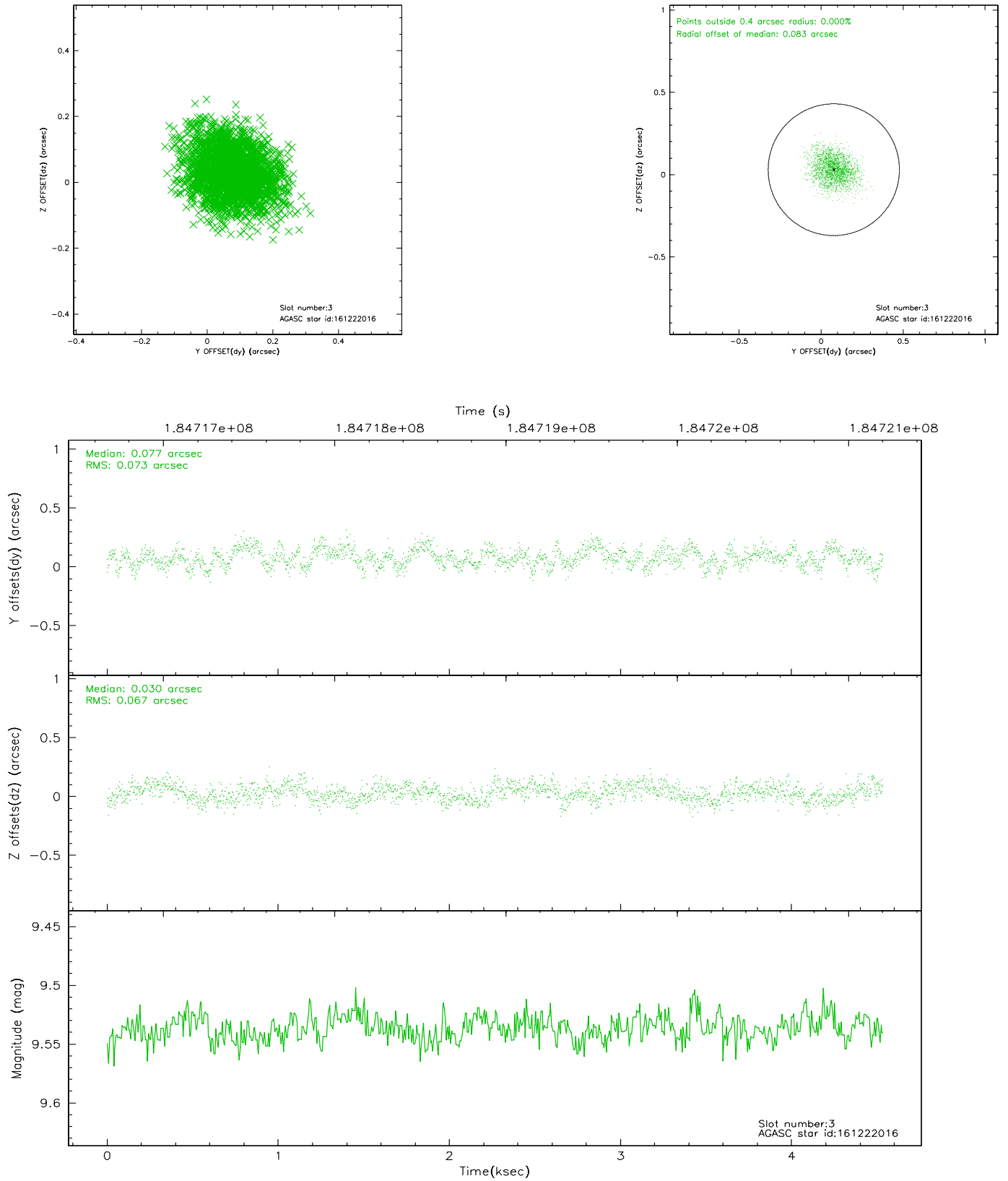


Slot Statistics

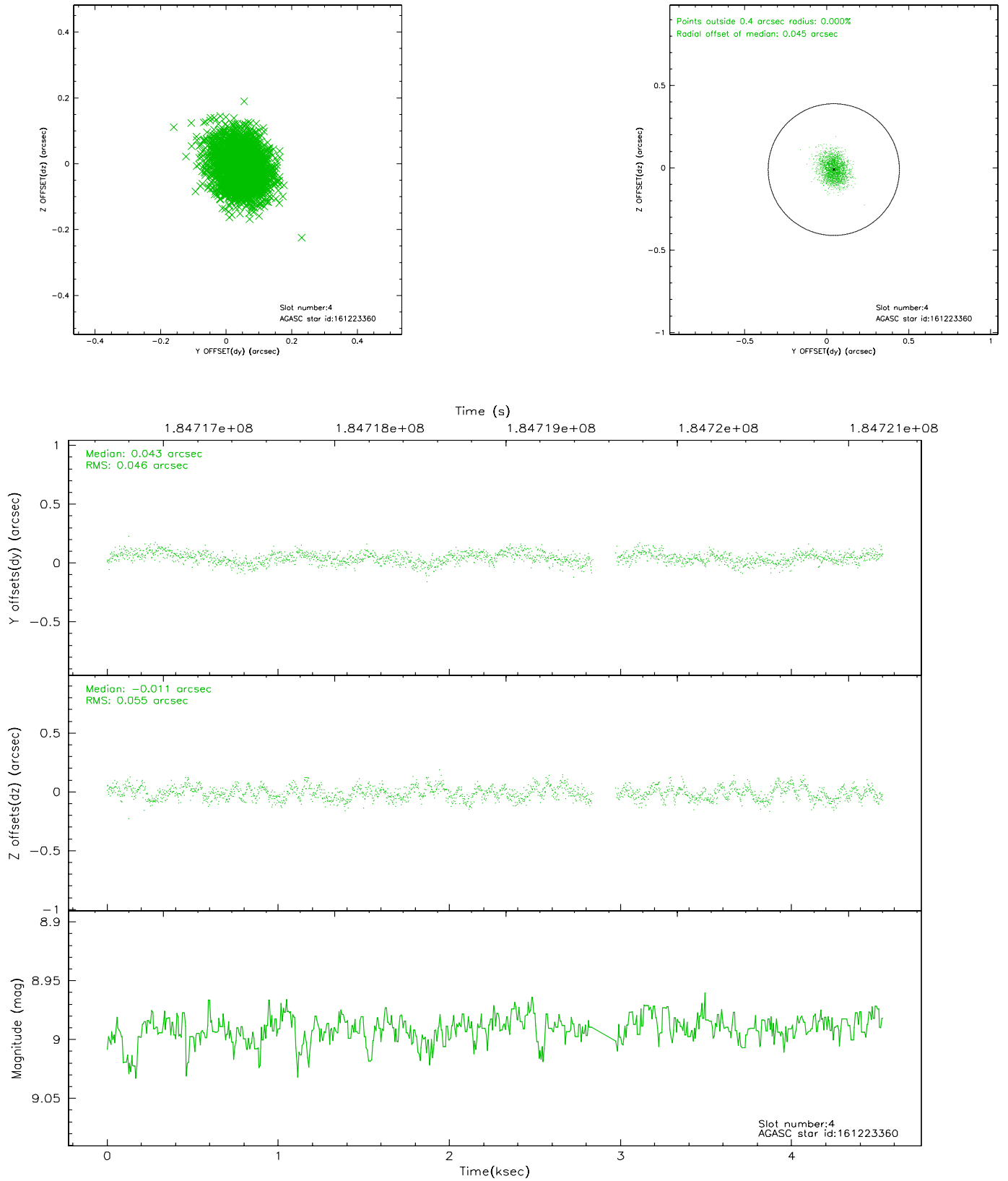
slot	status	id	mag	n_pts	med_dy	med_dz	dr1	dr2	ra	dec	mean_y	mean_z
0	FID	ACIS-S-2	7.10	1106	-0.019	-0.022	0.006	0.011	0.000000	0.000000	-759.38	-1729.63
1	FID	ACIS-S-4	7.21	1106	0.023	0.015	0.005	0.009	0.000000	0.000000	2153.34	177.47
2	FID	ACIS-S-5	7.23	1106	-0.035	0.016	0.006	0.010	0.000000	0.000000	-1810.48	172.71
3	GUIDE	161222016	9.54	2209	0.077	0.030	0.107	0.171	44.526629	20.590758	-2065.75	1829.97
4	GUIDE	161223360	8.99	2144	0.043	-0.011	0.077	0.122	43.771251	20.800226	322.65	676.54
5	GUIDE	161225088	6.68	2212	-0.142	-0.130	0.055	0.092	43.707656	20.373066	786.38	2157.95
6	GUIDE	161225128	8.74	2212	-0.010	0.070	0.076	0.117	43.770393	21.595149	-141.63	-2146.45
7	GUIDE	161226552	9.54	2211	0.030	0.043	0.106	0.176	43.612313	21.326195	539.63	-1280.50

2.4 Star Slots

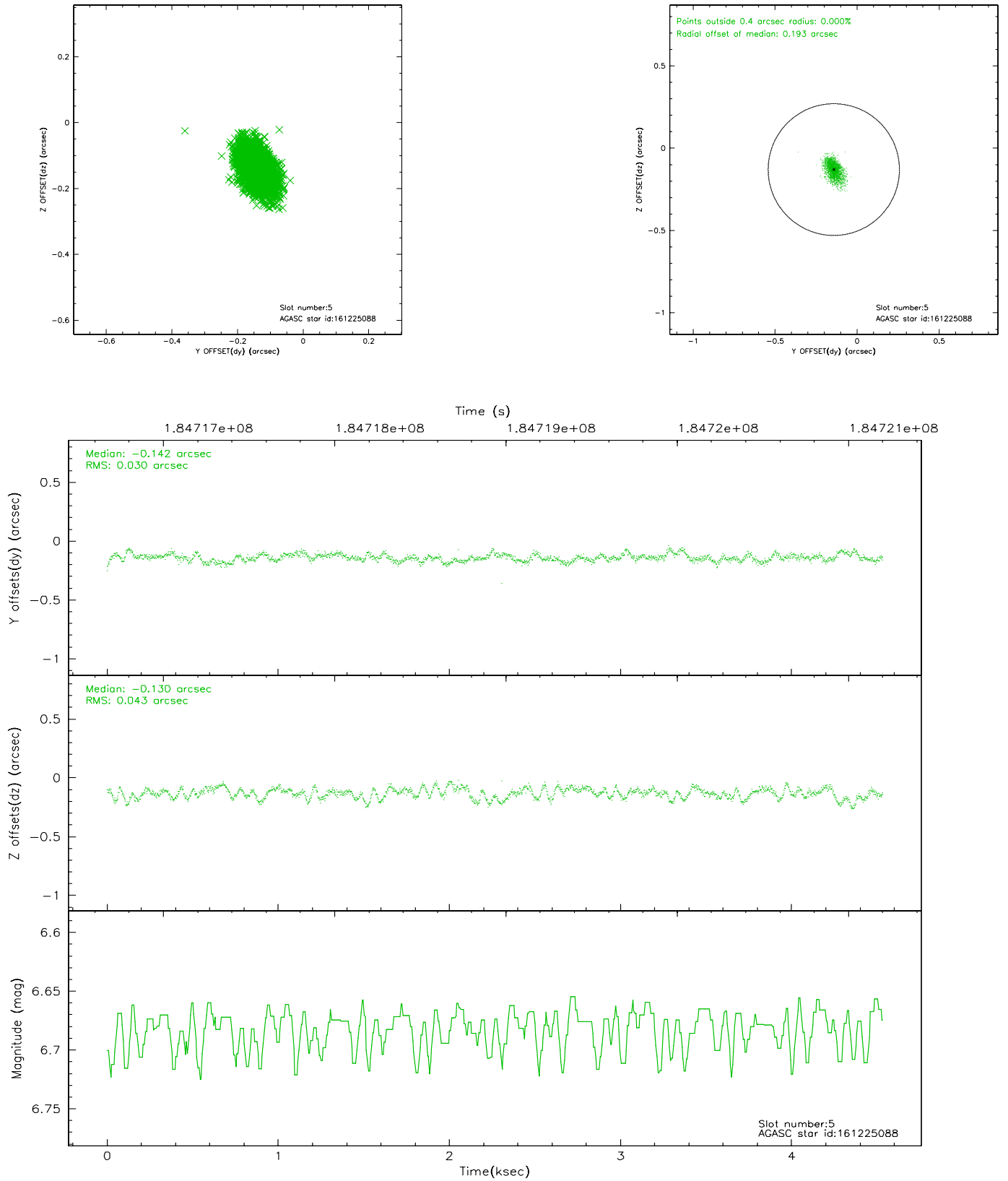
2.4.1 Slot 3



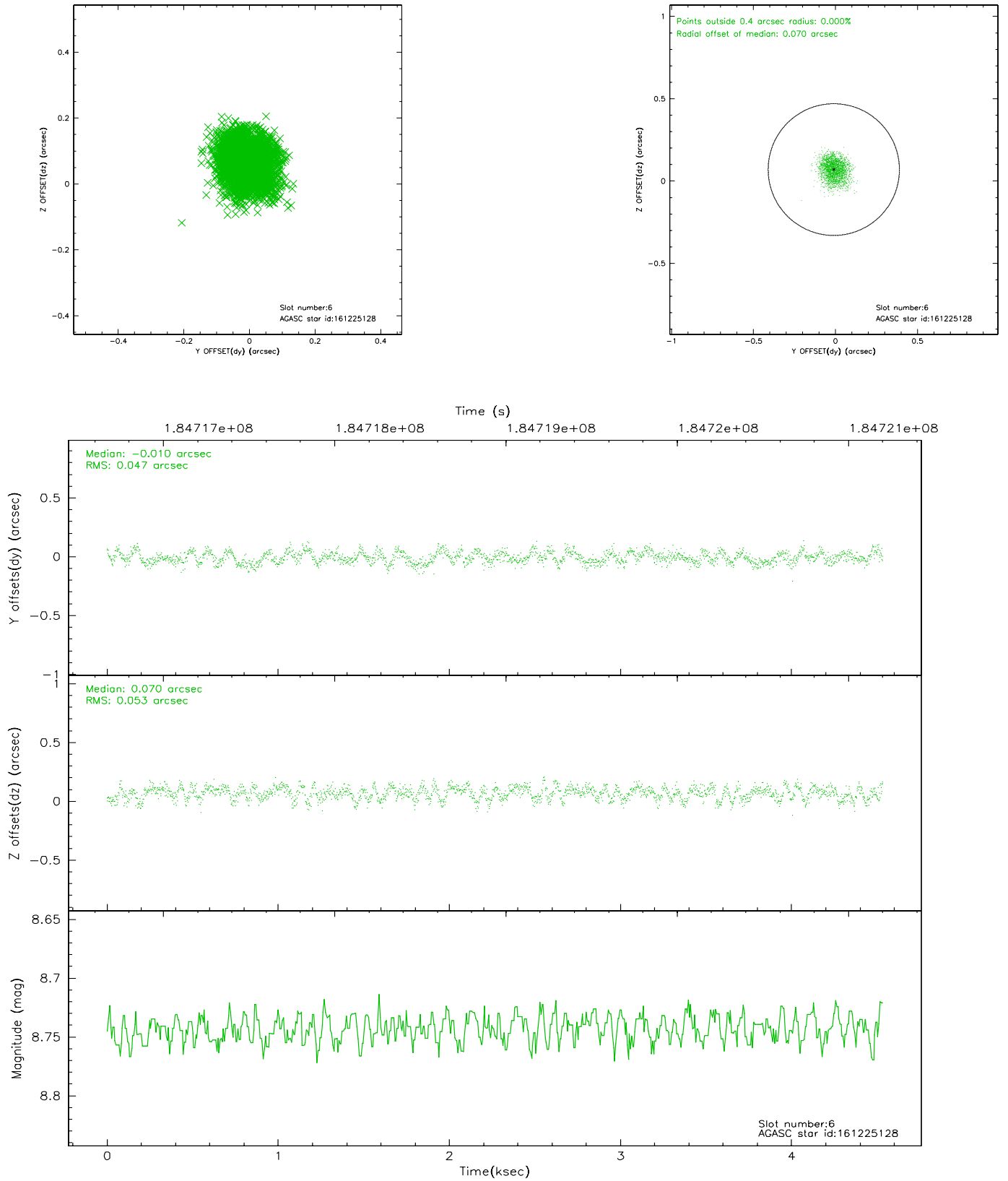
2.4.2 Slot 4



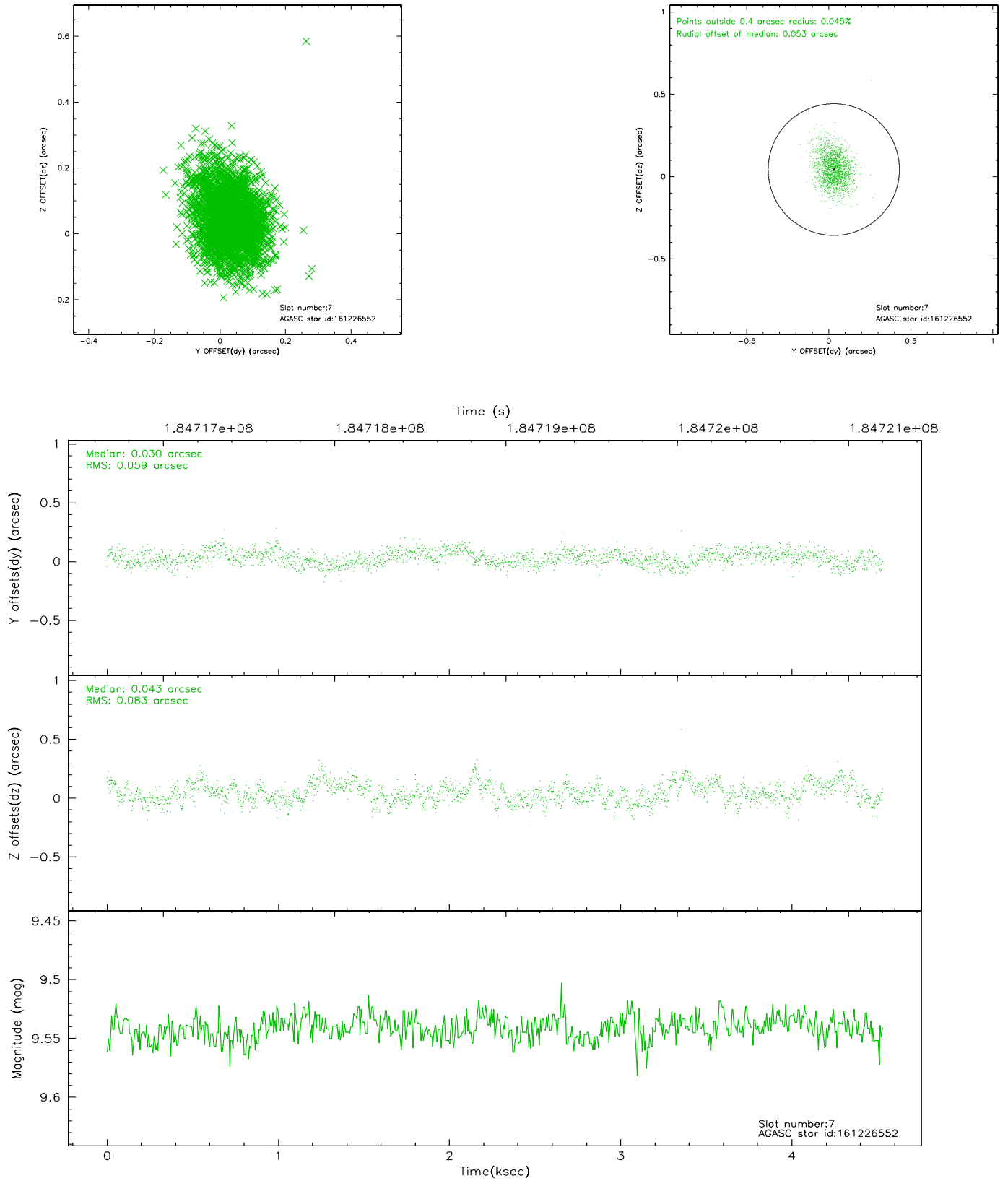
2.4.3 Slot 5



2.4.4 Slot 6

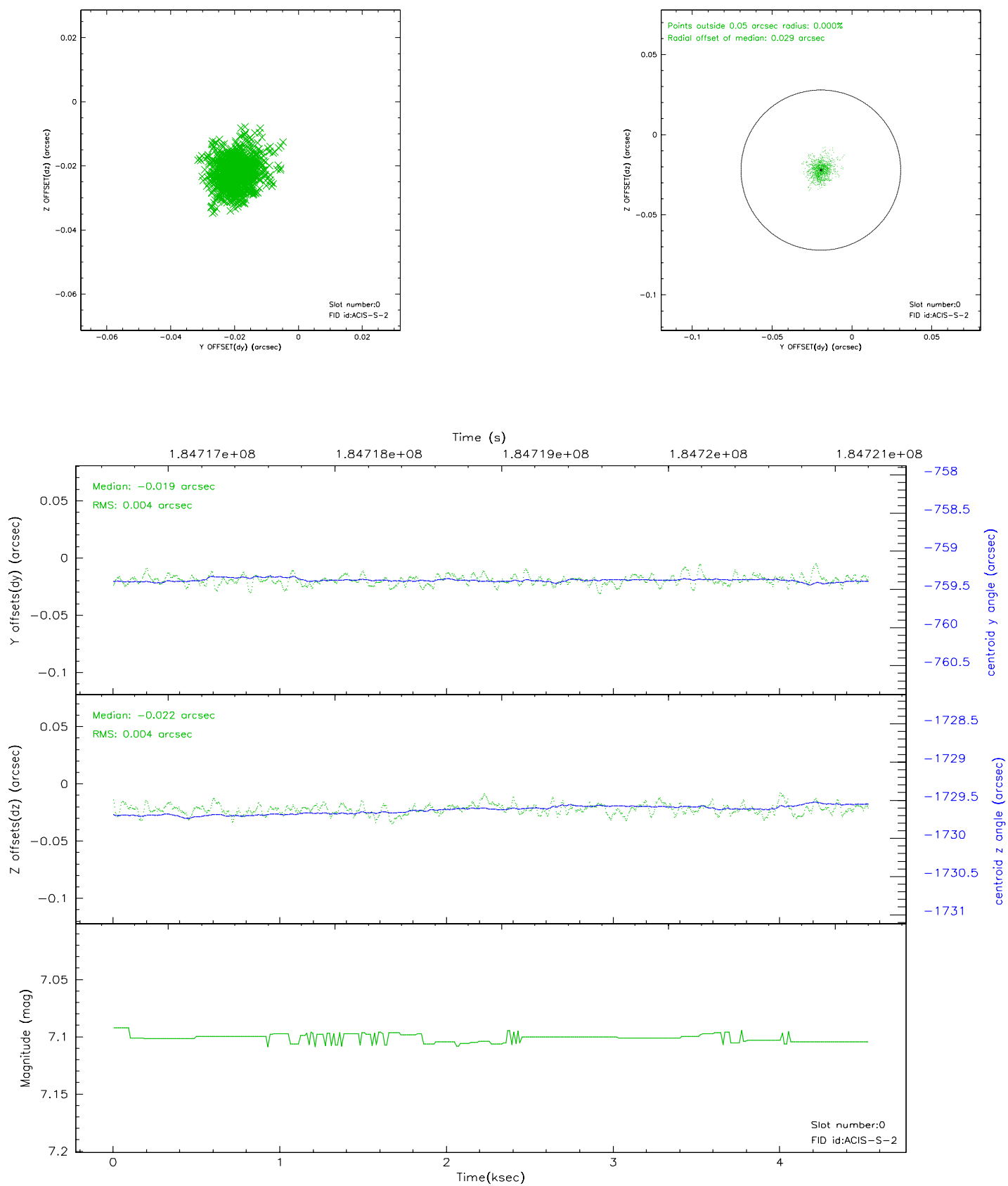


2.4.5 Slot 7

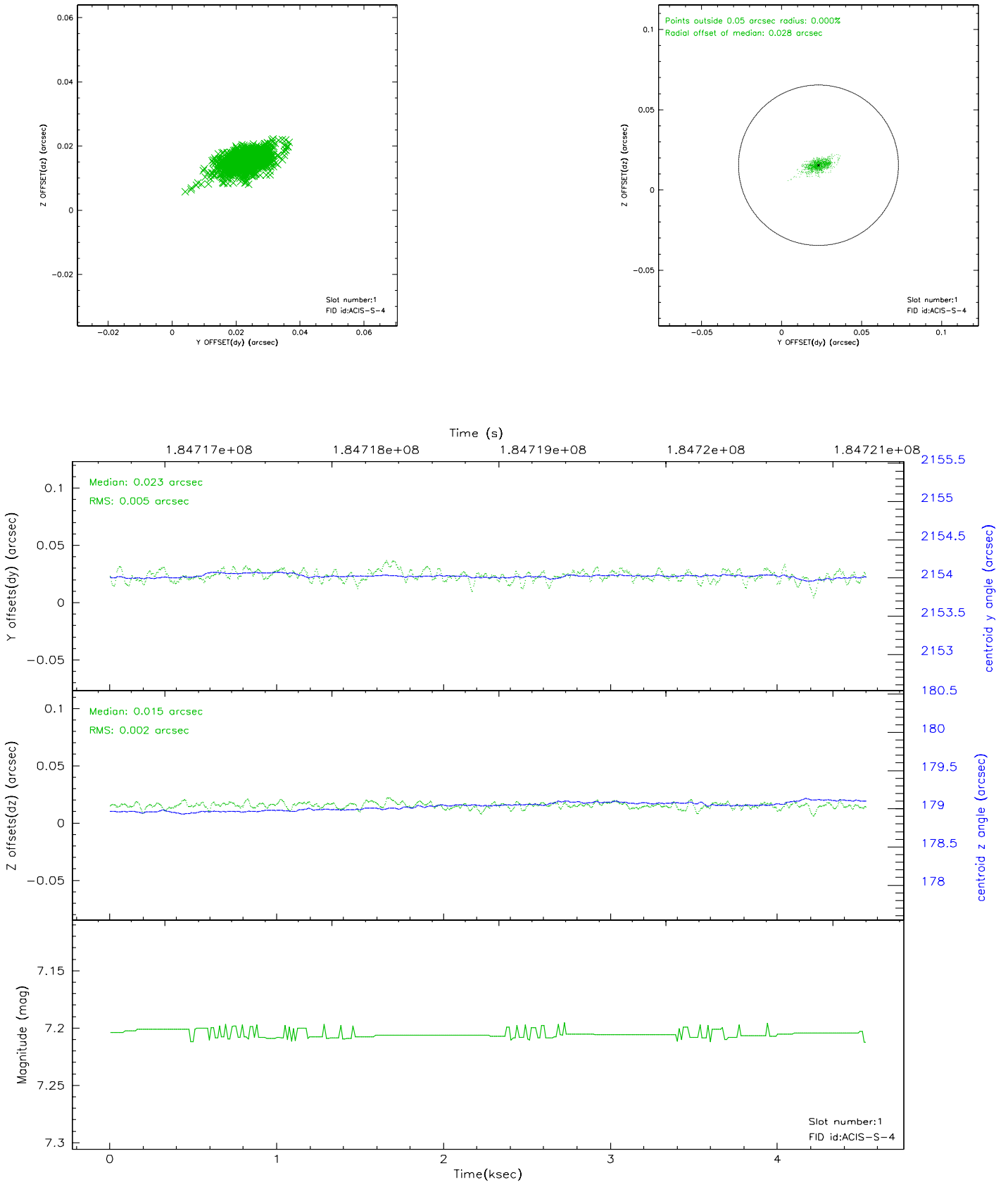


2.5 FID Slots

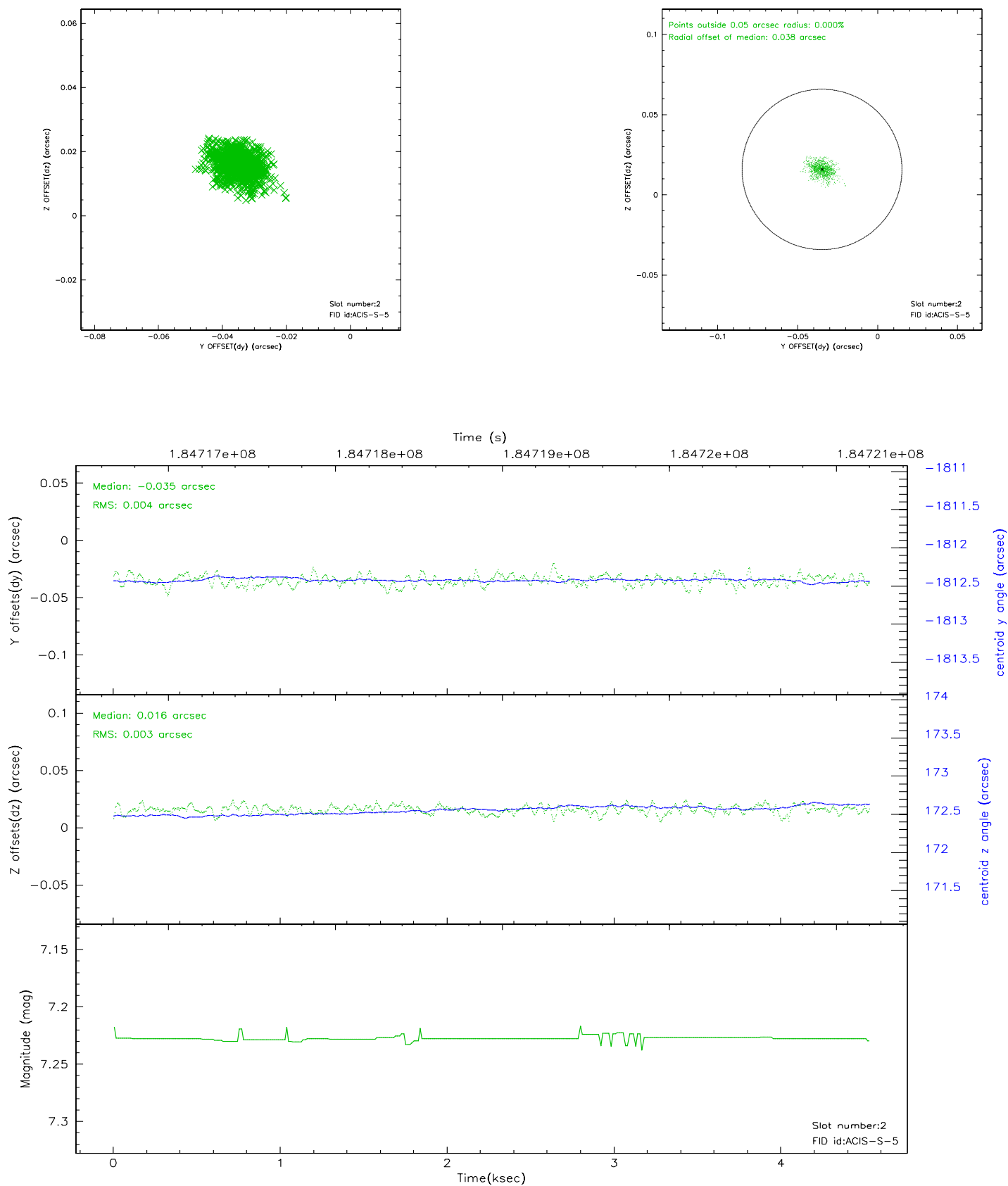
2.5.1 Slot 0



2.5.2 Slot 1



2.5.3 Slot 2



3 Point Sources

A Summary

A.1 Status

V&V Scientist	Beth Sundheim
V&V Date (YYYY-MM-DD)	2006.06.30
V&V Edition	1
V&V Disposition and Status	OK
V&V Charge Time	4.53

A.2 Comments