

V&V Reference Report

L2 ASCDS Version : 8.5

Observation 4722 - L2 Version 3
Chandra X-Ray Center

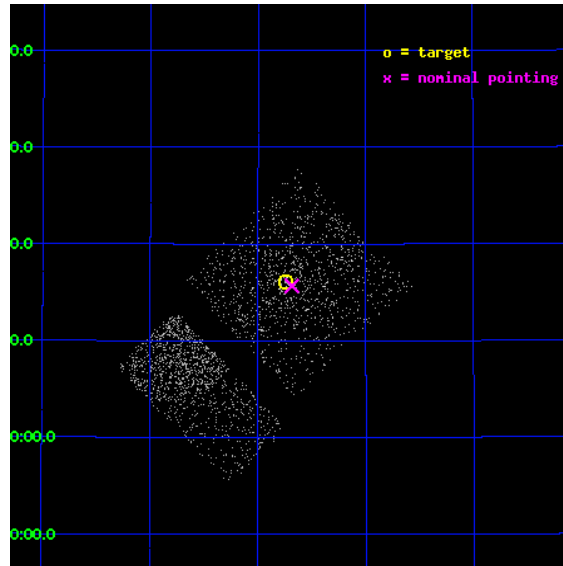
L2 Processing Date : Dec 10 2012

Contents

1	Front	2
2	OBI Primary	3
2.1	OBI	3
2.1.1	Images	3
2.1.2	Bias	3
2.1.3	Parameters	4
2.1.4	Events	4
2.2	Compared Parameters	5
2.3	Aspect	6
2.4	Star Slots	9
2.4.1	Slot 3	9
2.4.2	Slot 4	10
2.4.3	Slot 5	11
2.4.4	Slot 6	12
2.4.5	Slot 7	13
2.5	FID Slots	14
2.5.1	Slot 0	14
2.5.2	Slot 1	15
2.5.3	Slot 2	16
3	OBI Secondary	17
3.1	OBI	17
3.1.1	Images	17
3.1.2	Bias	17
3.1.3	Parameters	18
3.1.4	Events	18
A	Summary	19
A.1	Status	19
A.2	Comments	19

1 Front

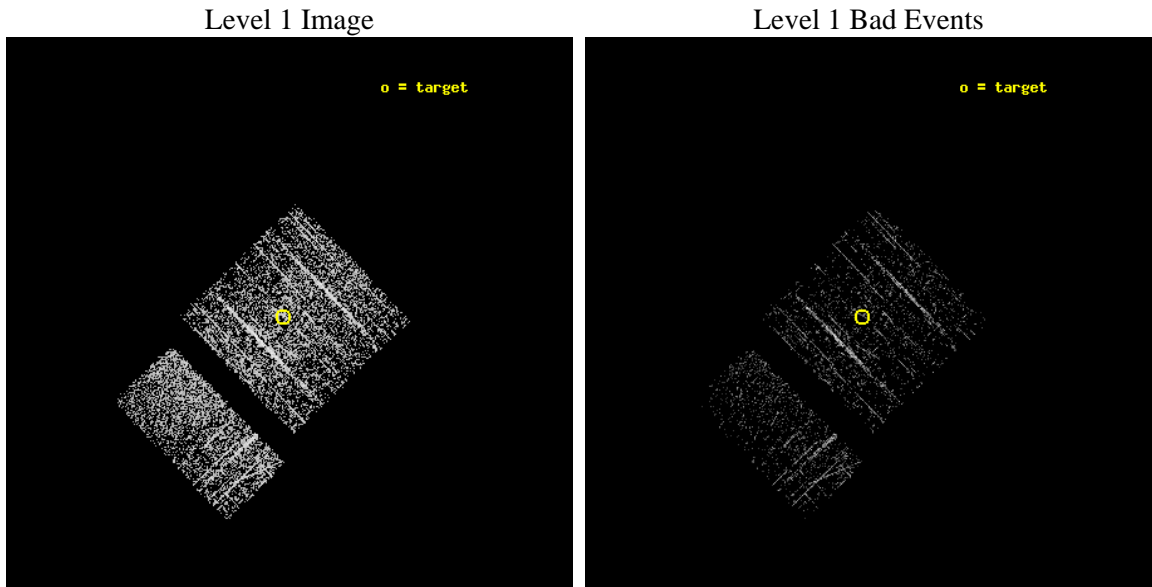
seq_num	600377	Sequence number
obs_id	4722	Observation id
title	Black Hole X-ray Novae in M31	Proposal title
observer	Dr. Michael Garcia	Principal investigator
object	M31-bulge	Source name
dtcycle	0	
cycle	P	events are from which exps? P[rimary] S[econdar
ra_targ	10.684583	Observer's specified target RA [deg]
dec_targ	41.269	Observer's specified target Dec [deg]
ra_nom	10.671238888344	Nominal RA [deg]
dec_nom	41.261276075773	Nominal Dec [deg]
roll_nom	225.99448742932	Nominal Roll [deg]
revision	3	Processing version of data
ontime	922.19764515758	Sum of GTIs [s]
livetime	145.17615420599	Livetime [s]
ontime0	922.19764515758	Sum of GTIs [s]
ontime1	922.19764515758	Sum of GTIs [s]
ontime2	922.19764515758	Sum of GTIs [s]
ontime3	922.19764515758	Sum of GTIs [s]
ontime6	922.19764515758	Sum of GTIs [s]
ontime7	922.19764515758	Sum of GTIs [s]
l2events	2617	Number of level 2 events



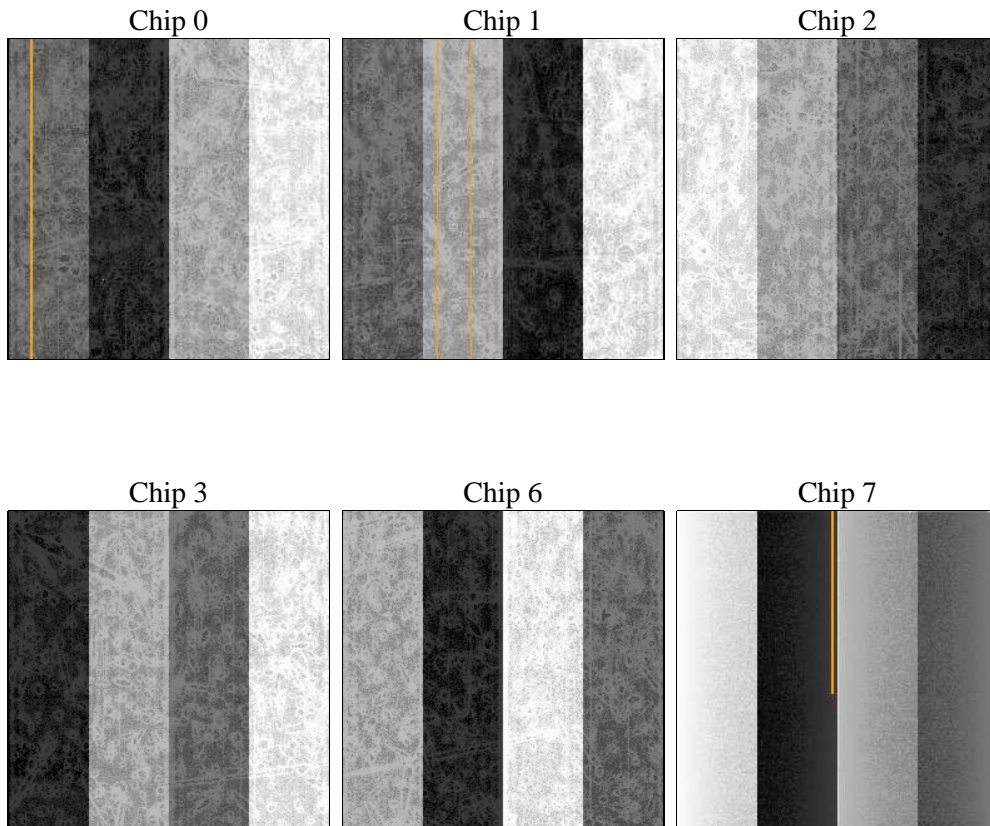
2 OBI Primary

2.1 OBI

2.1.1 Images



2.1.2 Bias



2.1.3 Parameters

obi_num	0	Obi number	sched_exp_time	5000.000000	[s] Scheduled observation exposure time
ascdsver	8.5	Processing system revision	ontime	922.19764515758	Sum of GTIs [s]
caldsver	4.5.4	 	ontime0	922.19764515758	Sum of GTIs [s]
date	2012-12-10T22:21:28	Date and time of file creation	ontime1	922.19764515758	Sum of GTIs [s]
revision	3	Processing version of data	ontime2	922.19764515758	Sum of GTIs [s]
			ontime3	922.19764515758	Sum of GTIs [s]
			ontime6	922.19764515758	Sum of GTIs [s]
			ontime7	922.19764515758	Sum of GTIs [s]
			l1events	22735	Number of level 1 events

2.1.4 Events

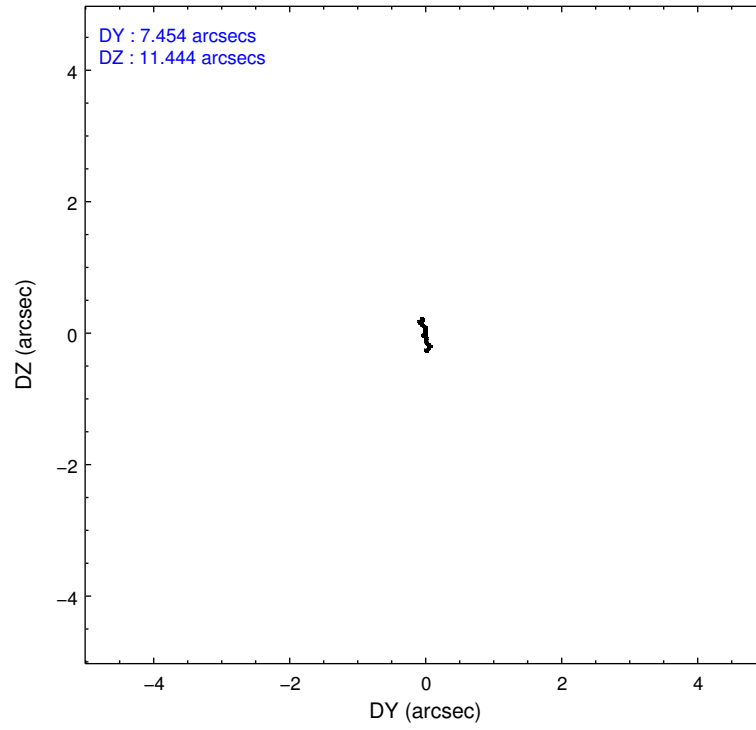
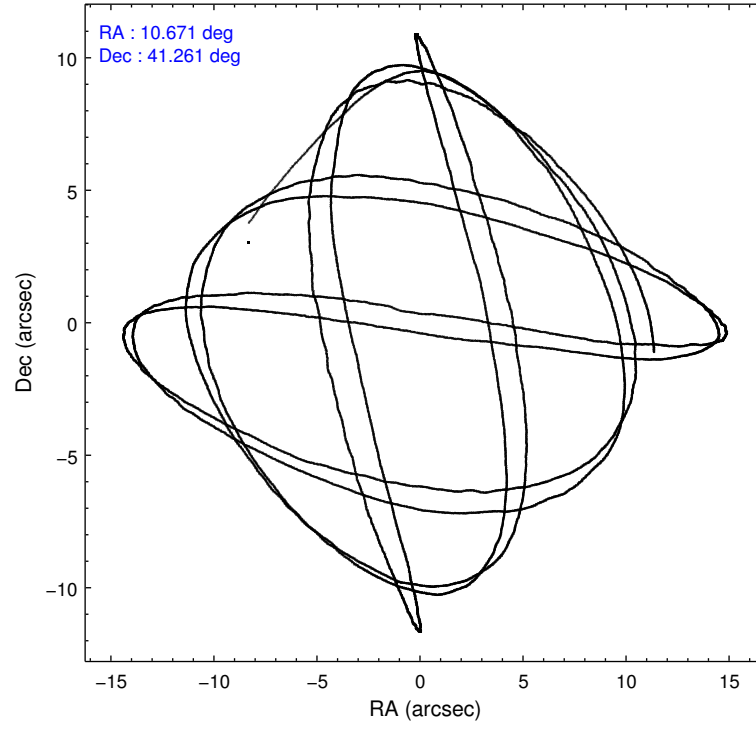
	ccd 0	ccd 1	ccd 2	ccd 3	ccd 6	ccd 7
level 1 events	3517	3637	3727	4100	4133	3621
rejected events	3102	3231	3403	3583	3801	2665
rejected %	88%	88%	91%	87%	91%	73%

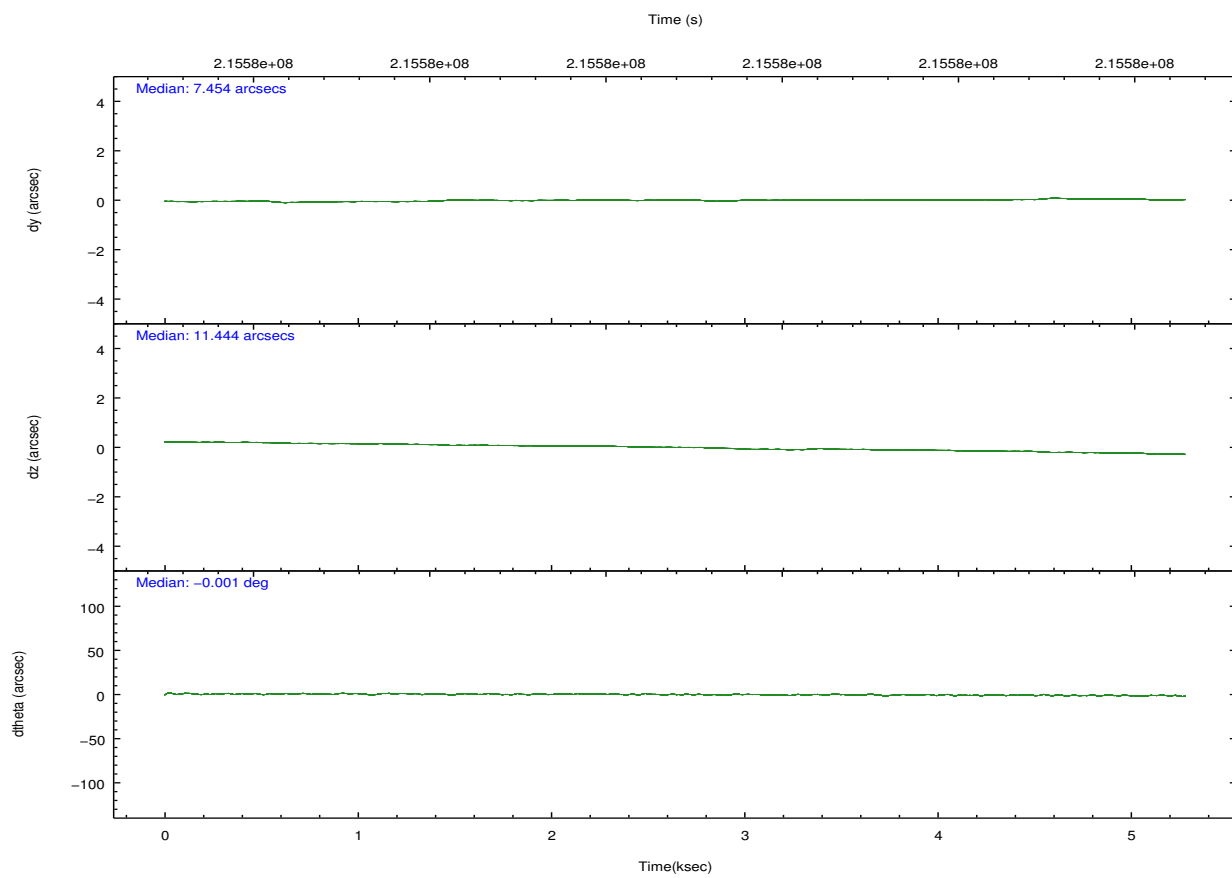
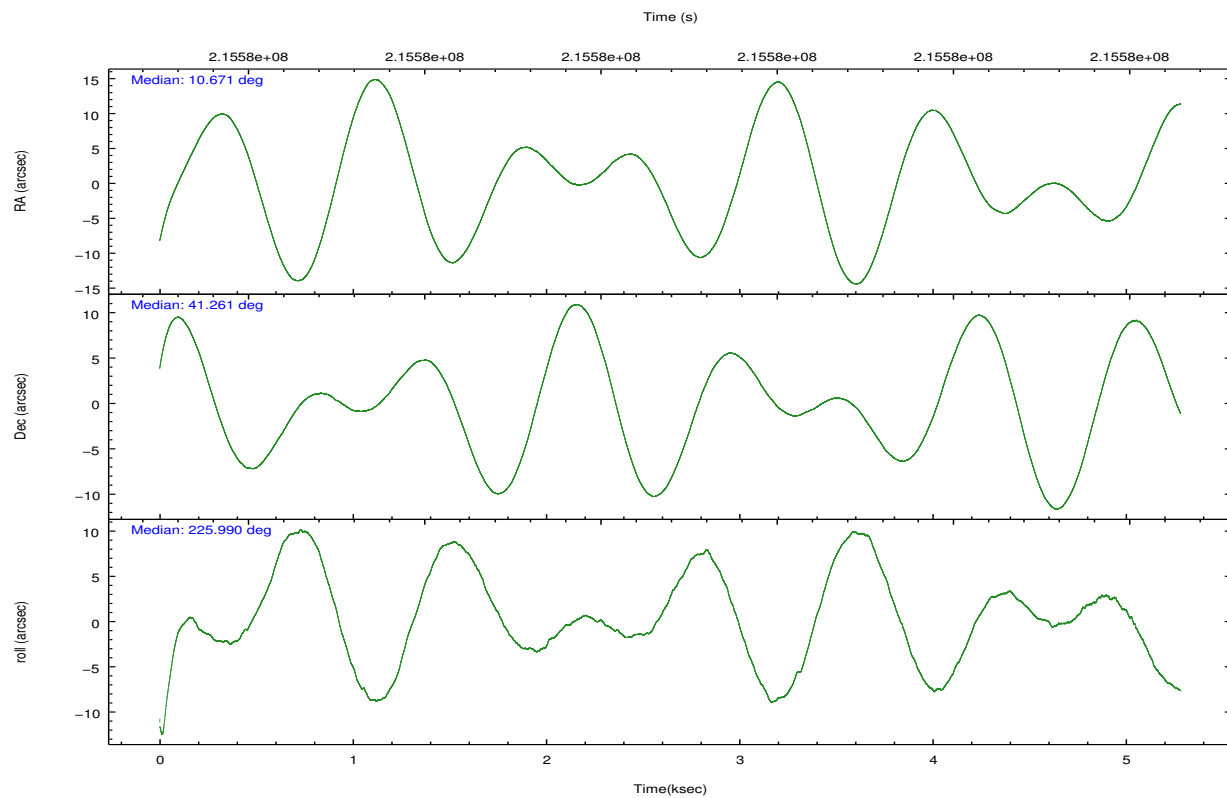
	ccd 0	ccd 1	ccd 2	ccd 3	ccd 6	ccd 7
grade 0 events	178	149	131	272	106	106
	5%	4%	3%	6%	2%	2%
grade 1 events	1	1	1	3	3	7
	0%	0%	0%	0%	0%	0%
grade 2 events	96	87	76	92	72	201
	2%	2%	2%	2%	1%	5%
grade 3 events	42	47	34	43	38	77
	1%	1%	0%	1%	0%	2%
grade 4 events	40	41	39	47	36	94
	1%	1%	1%	1%	0%	2%
grade 5 events	97	108	105	124	120	264
	2%	2%	2%	3%	2%	7%
grade 6 events	63	86	51	68	82	488
	1%	2%	1%	1%	1%	13%
grade 7 events	3000	3118	3290	3451	3676	2384
	85%	85%	88%	84%	88%	65%

2.2 Compared Parameters

Parameter	Planned	Actual	Parameter	Planned	Actual
Instrument	ACIS	ACIS	Obspar format version number	7	7
Detector	ACIS-012367	ACIS-012367	Obspar file type	PREDICTED	ACTUAL
Grating	NONE	NONE	Obspar update status	NONE	UPDATED
Data mode	FAINT	FAINT	Number of optional ACIS chips dropped	0	0
Observation mode	POINTING	POINTING	On-chip summing requested	N	N
[deg] Pointing RA	10.679850	10.67123888834436	Subarray requested	NONE	NONE
[deg] Pointing Dec	41.287807	41.26127607577303	Alternating exposures requested	Y	Y
[deg] Pointing Roll	225.780152	225.9944874293186	[s] Primary exposure time	0.600000	0.6
[s] Window start time (MET)	215654464.184000	215654464.184000	[s] Secondary exposure time	0.000000	3.2
[s] Window stop time (MET)	216259264.184000	216259264.184000	Duty cycle	5	5
[mm] SIM focus pos	-0.782348	-0.7809083437167272			
[mm] SIM defocus	0	0.001439871863259334			
[mm] SIM translation stage pos	-233.592463	-233.5874344608287			
[mm] SIM translation stage offset	0	-0.005018542100998502			
[s] Observation start time (MET)	215575033.184000	215573877.04651			
Observation start date	2004-10-31T01:56:09	2004-10-31T01:37:57			
[s] Observation end time (MET)	215580033.184000	215580557.48431			
Observation end date	2004-10-31T03:19:29	2004-10-31T03:29:17			
Read mode	TIMED	TIMED			

2.3 Aspect



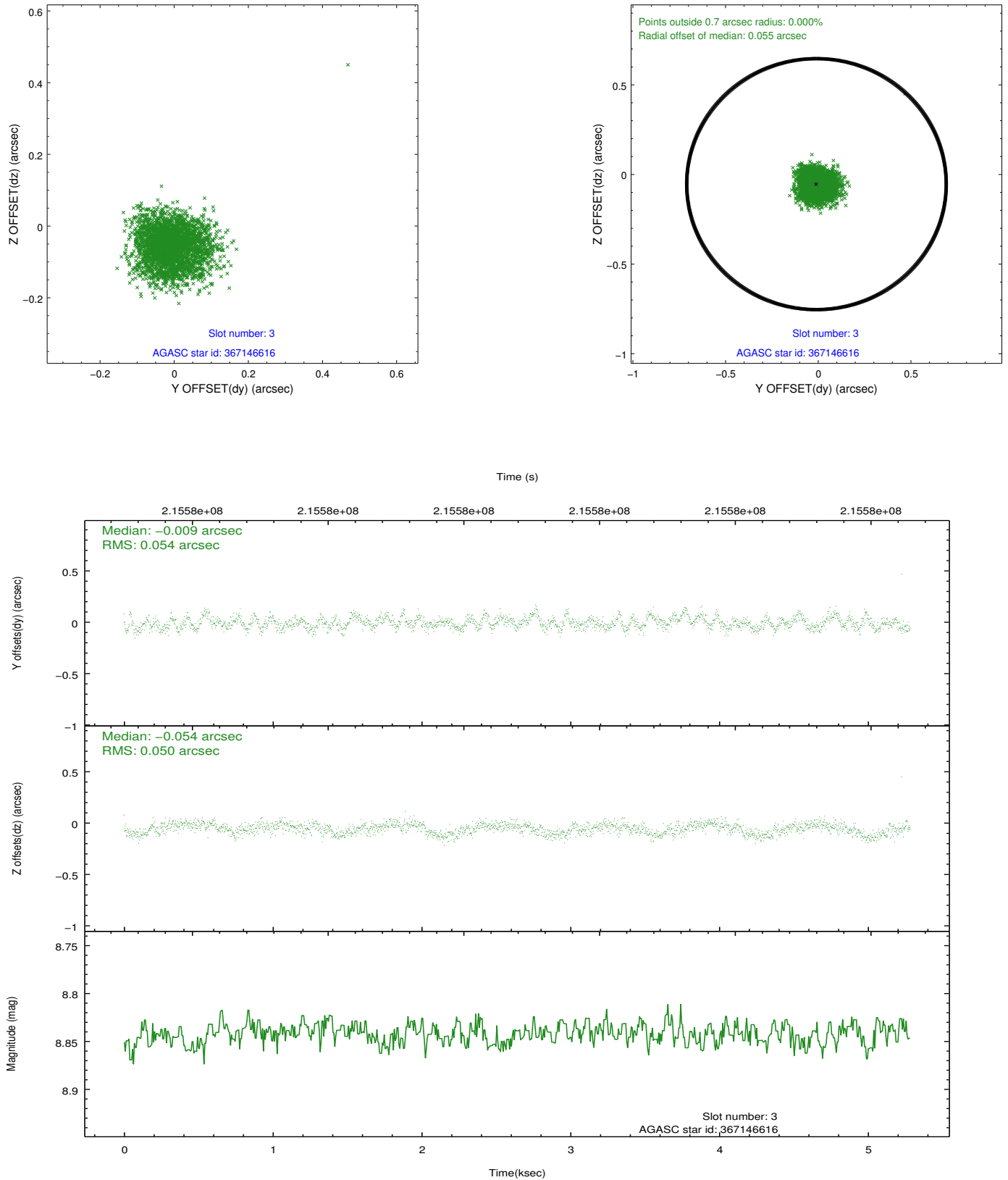


Slot Statistics

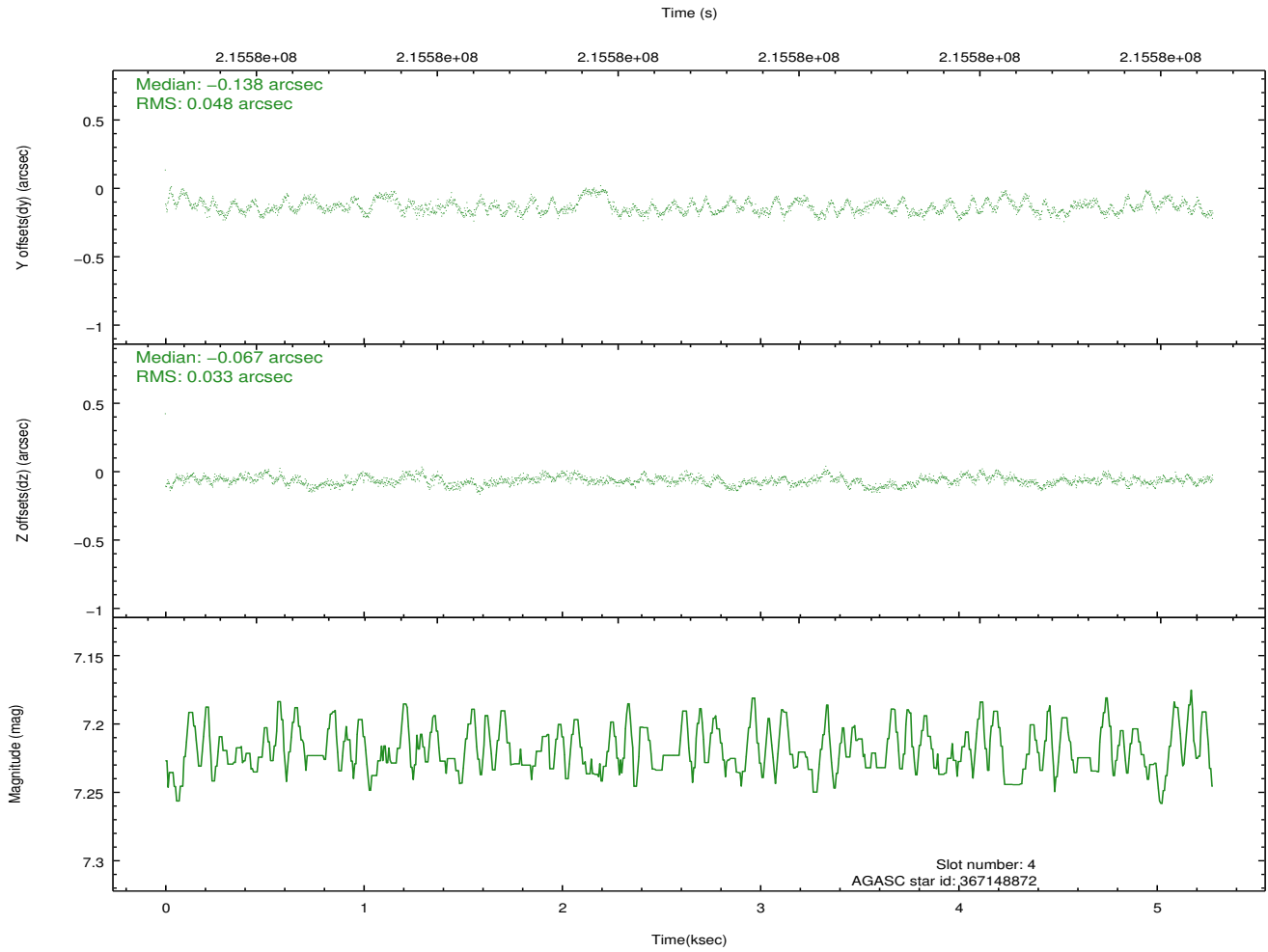
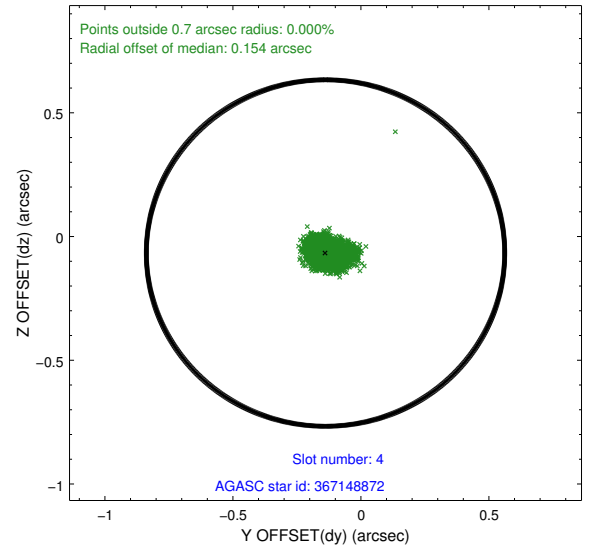
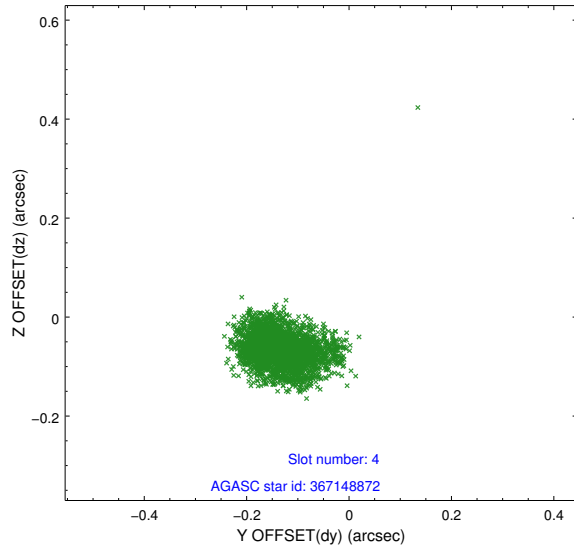
slot	status	id	mag	n_pts	med_dy	med_dz	dr1	dr2	ra	dec	mean_y	mean_z
0	FID	ACIS-I-1	7.24	1289	0.045	-0.024	0.008	0.018	0.000000	0.000000	932.26	-834.98
1	FID	ACIS-I-5	7.23	1289	-0.140	0.068	0.011	0.025	0.000000	0.000000	-1815.38	1062.07
2	FID	ACIS-I-6	7.24	1289	0.005	0.027	0.009	0.017	0.000000	0.000000	396.56	1707.79
3	GUIDE	367146616	8.84	2577	-0.009	-0.054	0.079	0.122	11.418645	41.190163	-1149.65	1673.61
4	GUIDE	367148872	7.22	2578	-0.138	-0.067	0.060	0.098	10.505940	40.688258	1877.73	1165.80
5	GUIDE	367658664	9.59	2577	0.026	-0.021	0.096	0.168	10.374070	41.369746	365.04	-798.17
6	GUIDE	367663272	9.29	2577	-0.028	0.016	0.080	0.127	10.656279	41.699429	-1016.68	-1079.24
7	GUIDE	367145856	9.29	2574	0.145	0.125	0.086	0.141	10.744946	40.402085	2160.97	2351.70

2.4 Star Slots

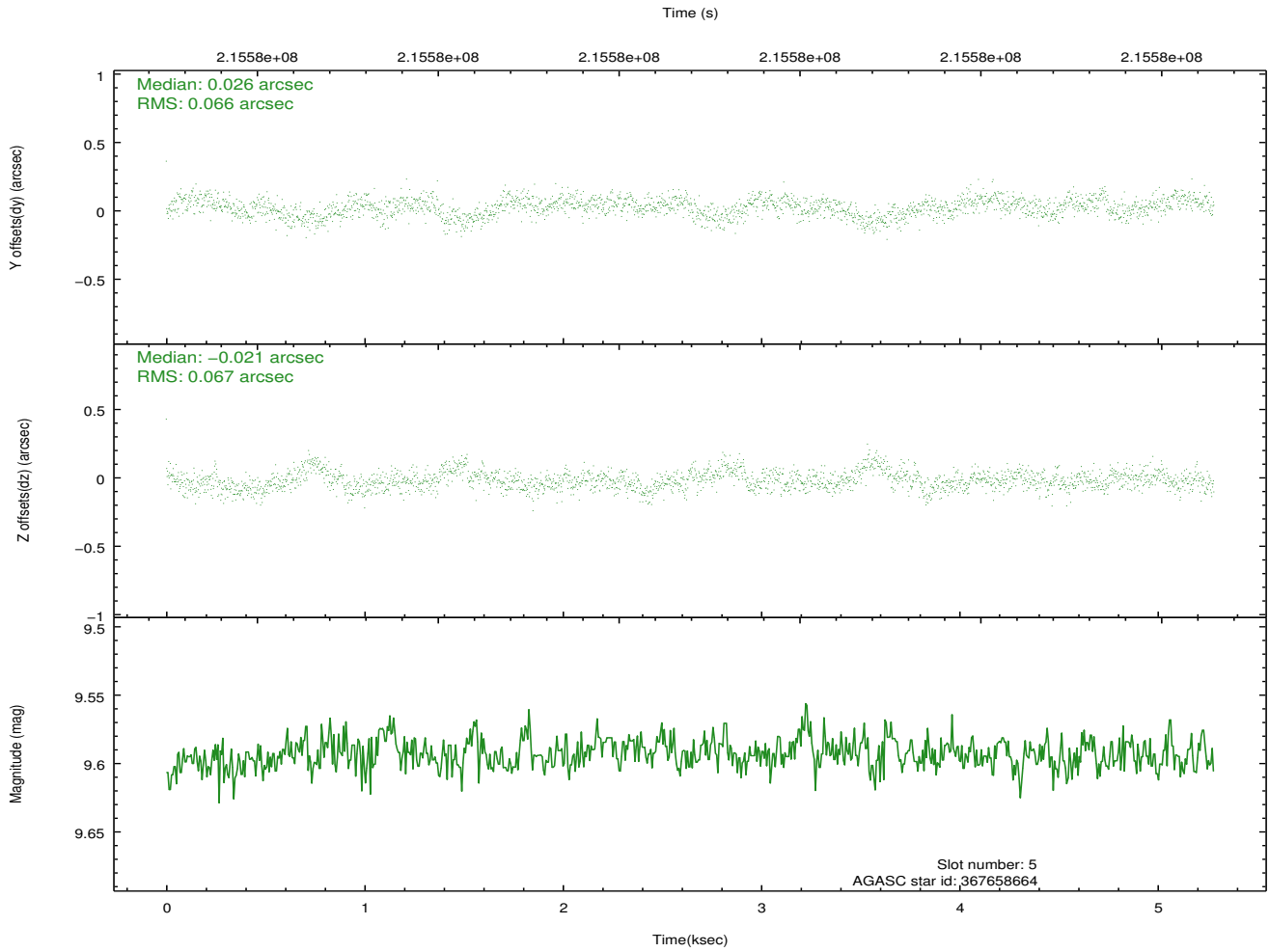
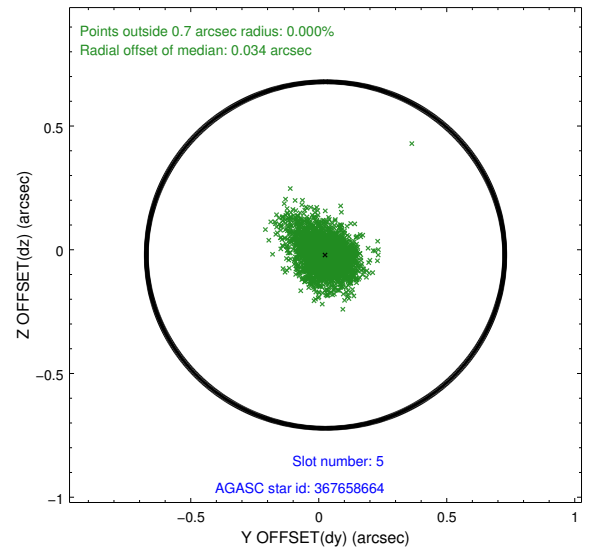
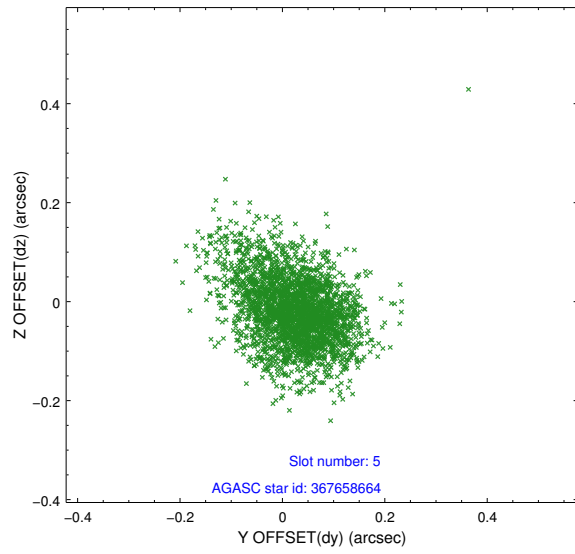
2.4.1 Slot 3



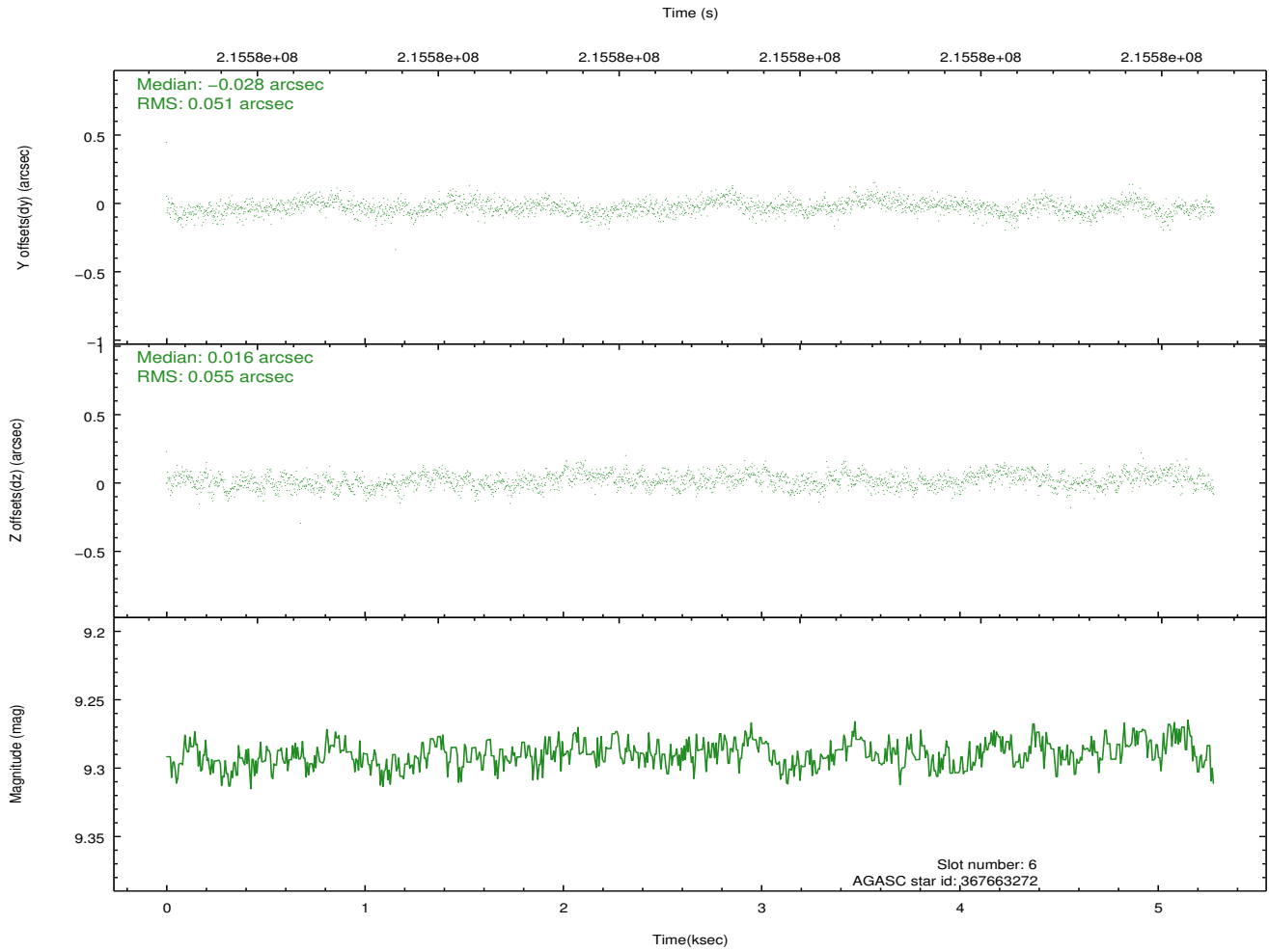
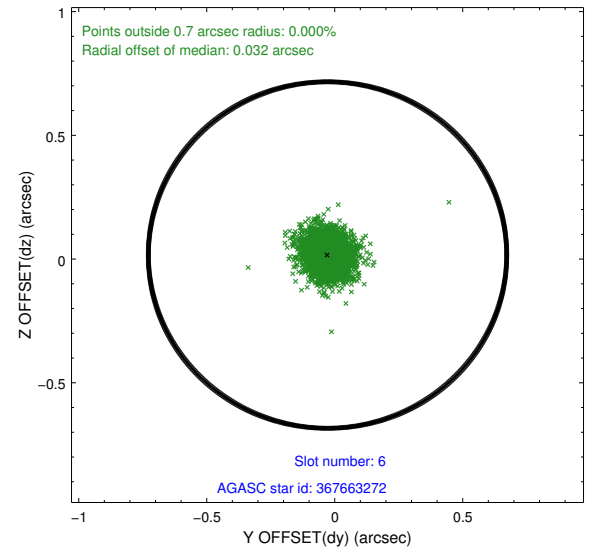
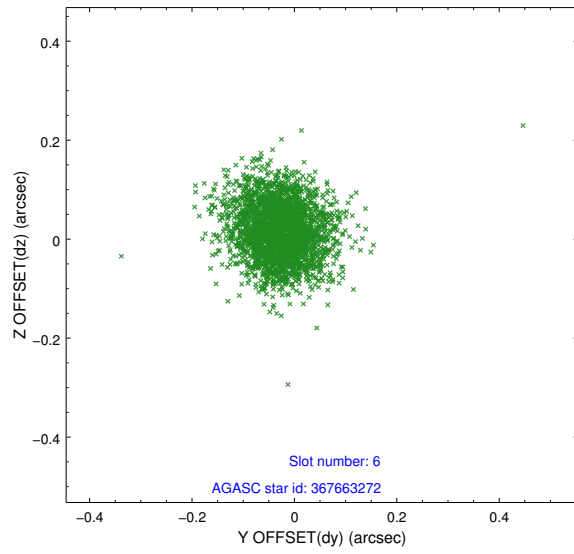
2.4.2 Slot 4



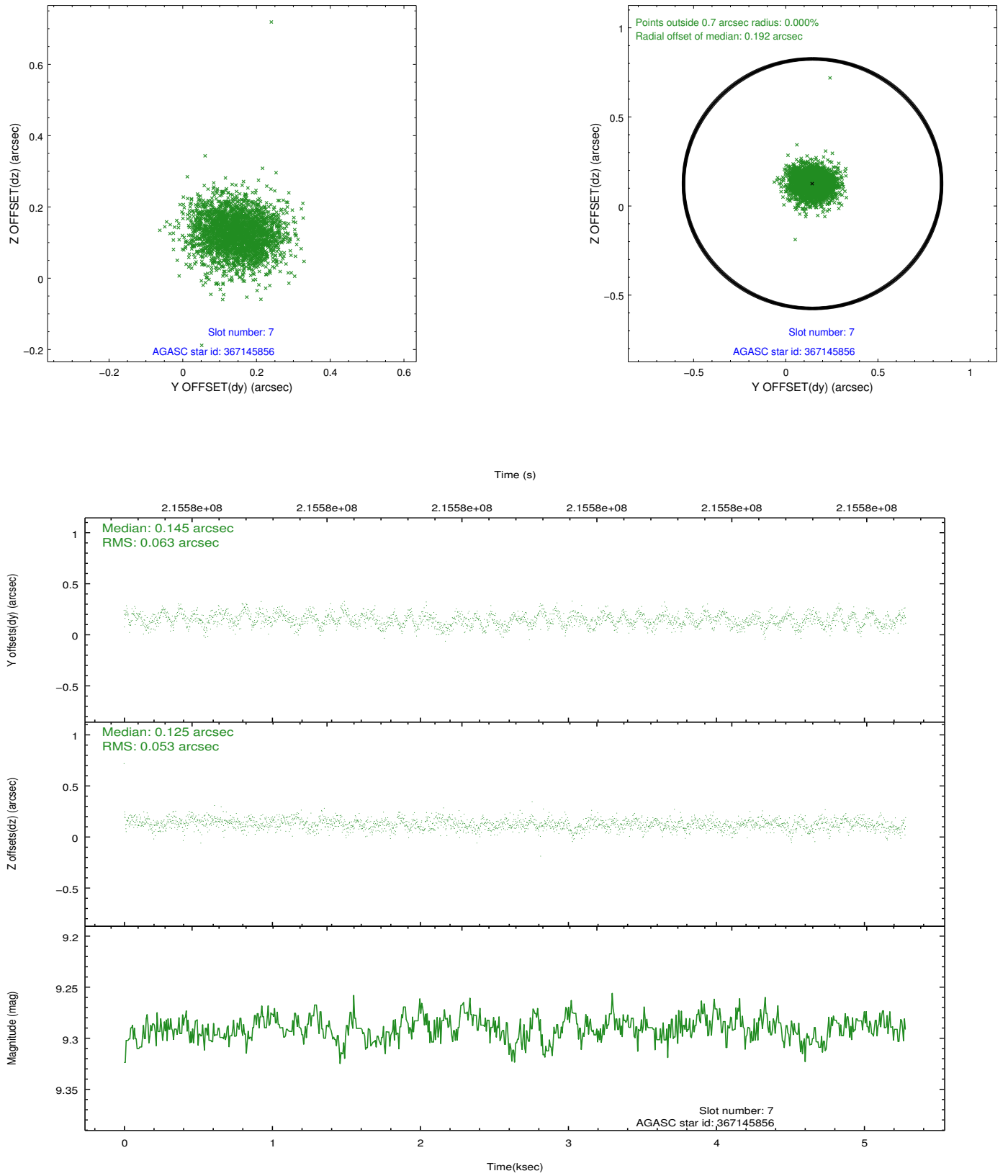
2.4.3 Slot 5



2.4.4 Slot 6

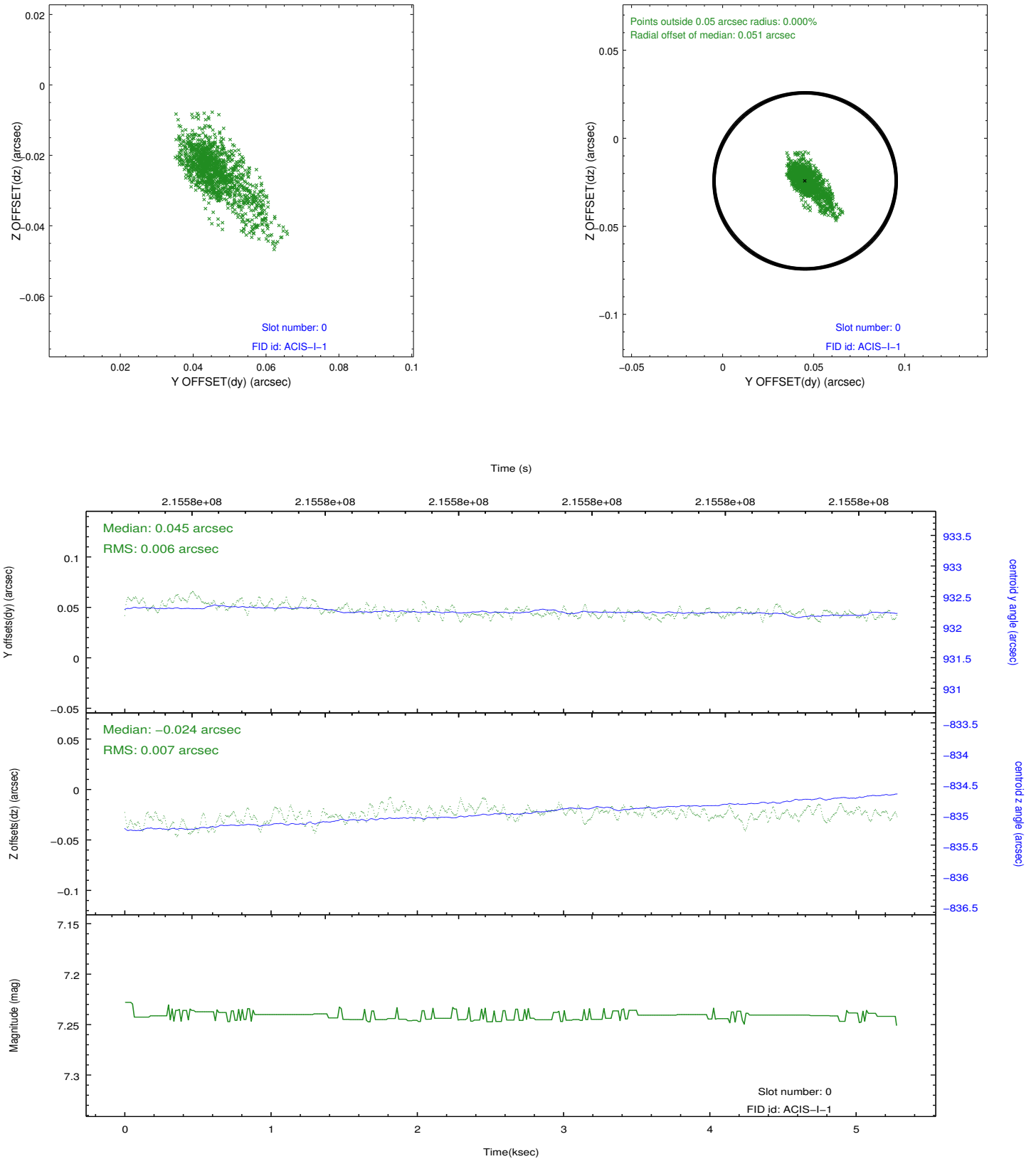


2.4.5 Slot 7

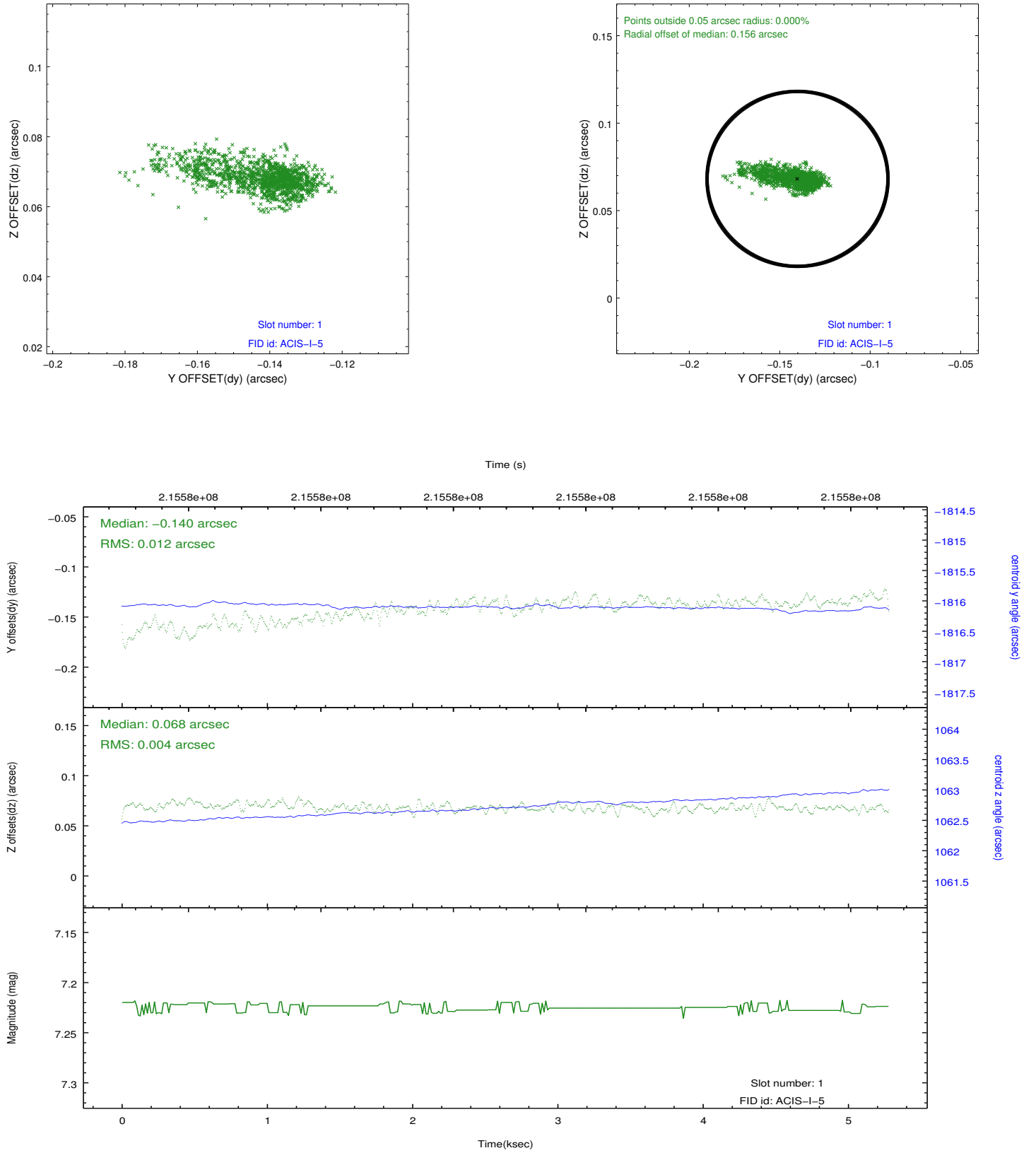


2.5 FID Slots

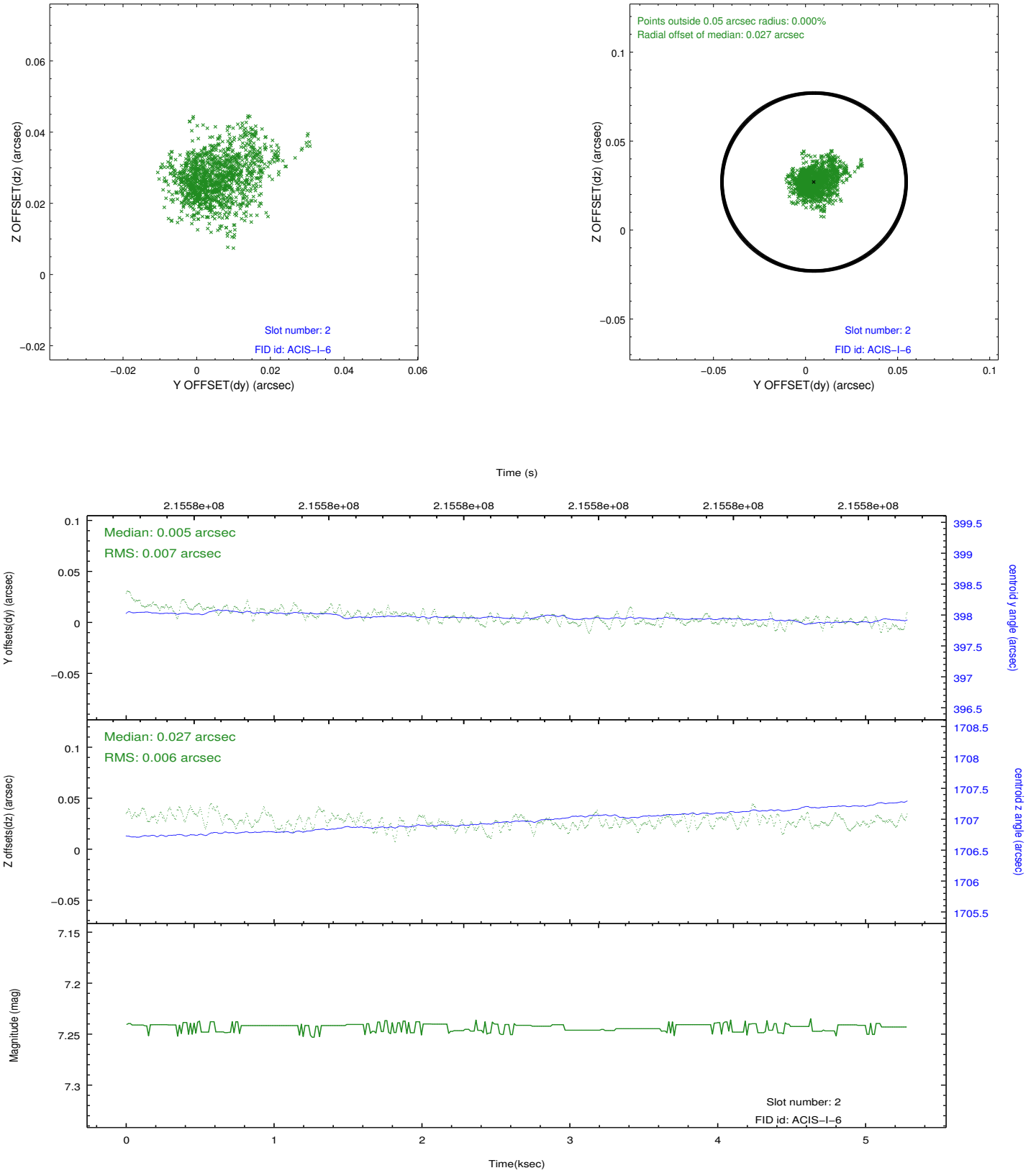
2.5.1 Slot 0



2.5.2 Slot 1



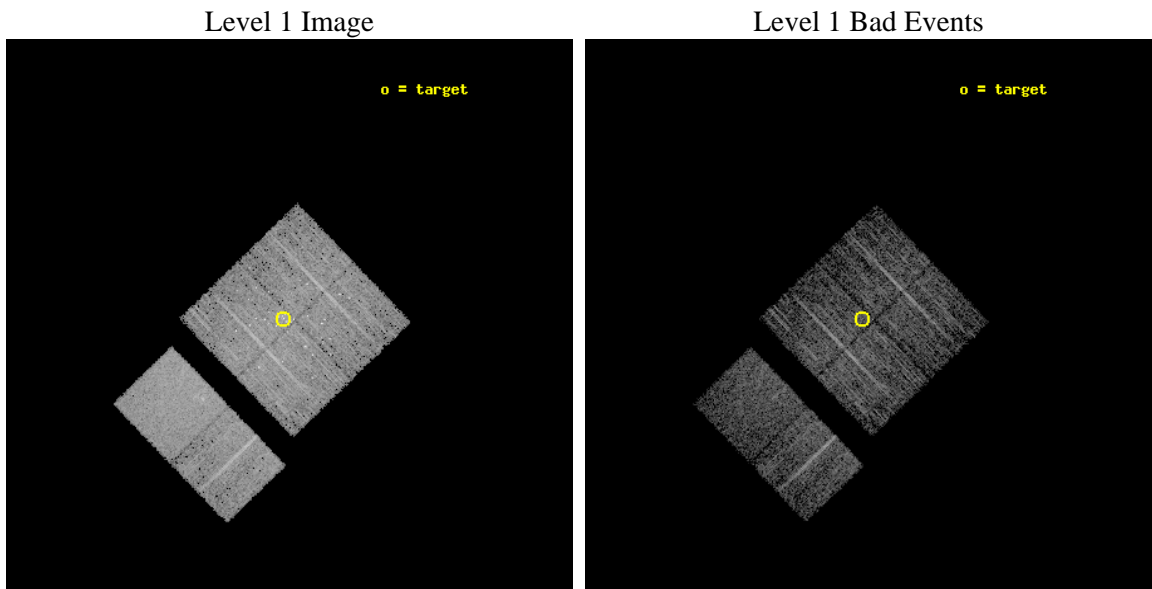
2.5.3 Slot 2



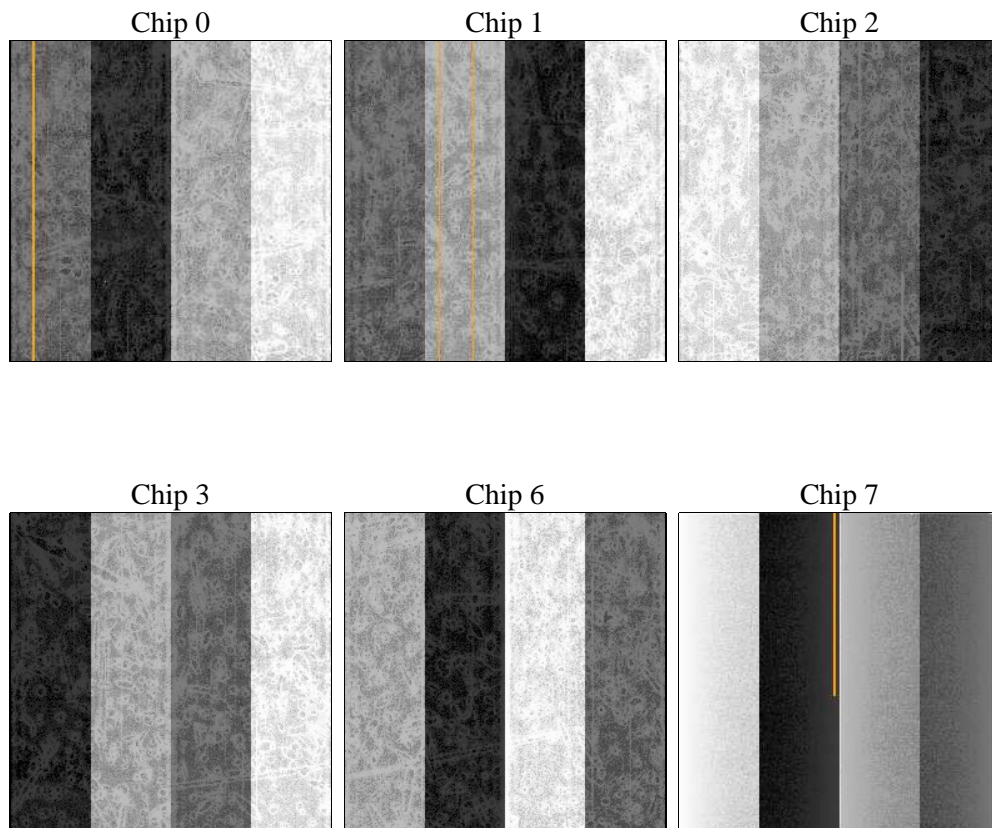
3 OBI Secondary

3.1 OBI

3.1.1 Images



3.1.2 Bias



3.1.3 Parameters

obi_num	0	Obi number	sched_exp_time	5000.000000	[s] Scheduled observation exposure time
ascdsver	8.5	Processing system revision	ontime	3944.6591528654	Sum of GTIs [s]
caldsver	4.5.4	 	ontime0	3944.6593124568	Sum of GTIs [s]
date	2012-12-10T22:22:29	Date and time of file creation	ontime1	3944.659411788	Sum of GTIs [s]
revision	3	Processing version of data	ontime2	3944.659053266	Sum of GTIs [s]
			ontime3	3944.6591528654	Sum of GTIs [s]
			ontime6	3944.6591327786	Sum of GTIs [s]
			ontime7	3944.6591729522	Sum of GTIs [s]
			l1events	206703	Number of level 1 events

3.1.4 Events

	ccd 0	ccd 1	ccd 2	ccd 3	ccd 6	ccd 7		ccd 0	ccd 1	ccd 2	ccd 3	ccd 6	ccd 7
level 1 events	30740	30565	35439	36291	31926	41742	grade 0 events	3302	2750	3071	5714	1670	1664
rejected events	24847	25115	29994	27527	27978	24085		10%	8%	8%	15%	5%	3%
rejected %	80%	82%	84%	75%	87%	57%	grade 1 events	35	34	26	89	29	46
								0%	0%	0%	0%	0%	0%
							grade 2 events	987	1033	985	1233	799	3484
								3%	3%	2%	3%	2%	8%
							grade 3 events	453	438	396	491	393	1578
								1%	1%	1%	1%	1%	3%
							grade 4 events	375	407	360	505	323	1515
								1%	1%	1%	1%	1%	3%
							grade 5 events	1229	1322	1227	1351	1550	3988
								3%	4%	3%	3%	4%	9%
							grade 6 events	788	832	639	831	764	9430
								2%	2%	1%	2%	2%	22%
							grade 7 events	23571	23749	28735	26077	26398	20037
								76%	77%	81%	71%	82%	48%

A Summary

A.1 Status

V&V Scientist	Jen Lauer
V&V Date (YYYY-MM-DD)	2013.01.03
V&V Edition	1
V&V Disposition and Status	OK
V&V Charge Time	4.866

A.2 Comments

Window constraint not satisfied. Joint Proposal: HST