

V&V Reference Report

L2 ASCDS Version : 8.5

Observation 4692 - L2 Version 3
Chandra X-Ray Center

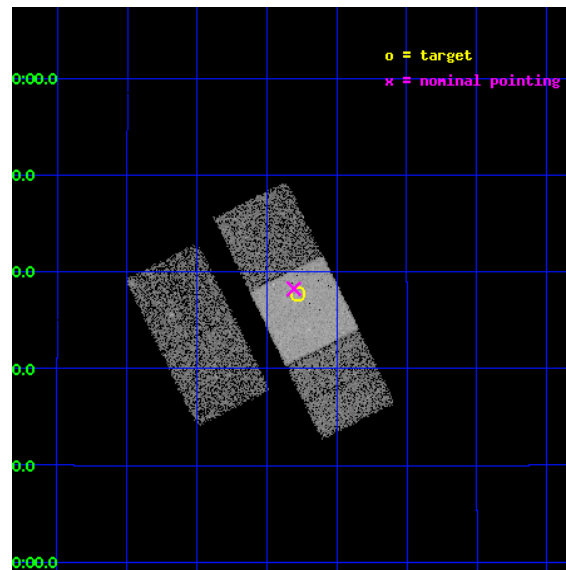
L2 Processing Date : Dec 10 2012

Contents

1	Front	2
2	OBI	3
2.1	OBI	3
2.1.1	Images	3
2.1.2	Bias	3
2.1.3	Parameters	4
2.1.4	Events	4
2.2	Compared Parameters	5
2.3	Aspect	6
2.4	Star Slots	9
2.4.1	Slot 3	9
2.4.2	Slot 4	10
2.4.3	Slot 5	11
2.4.4	Slot 6	12
2.4.5	Slot 7	13
2.5	FID Slots	14
2.5.1	Slot 0	14
2.5.2	Slot 1	15
2.5.3	Slot 2	16
A	Summary	17
A.1	Status	17
A.2	Comments	17

1 Front

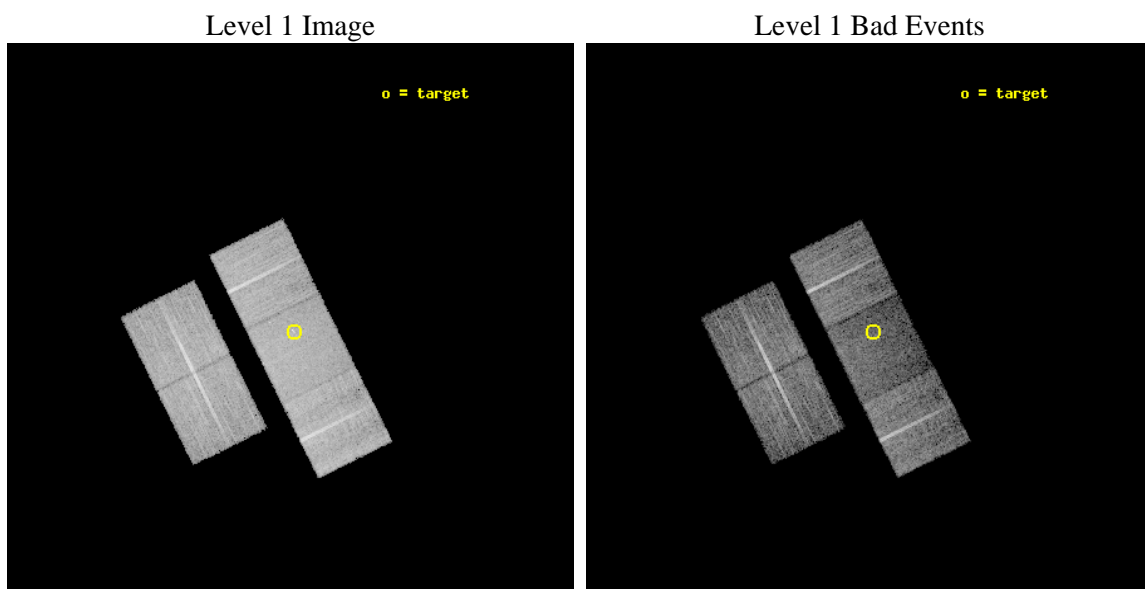
seq_num	600347	Sequence number
obs_id	4692	Observation id
title	Physics of Accretion Flows in Ultra-low Luminosity AGNs: A Mini Survey of a Distance-Limited Sample of Inactive Galaxies	Proposal tit
observer	Dr. Yuichi Terashima	Principal investigator
object	NGC 3384	Source name
dtcycle	0	
cycle	P	events from which exps? Prim/Second/Both
ra_targ	162.070833	Observer's specified target RA [deg]
dec_targ	12.629722	Observer's specified target Dec [deg]
ra_nom	162.07676926219	Nominal RA [deg]
dec_nom	12.63751292621	Nominal Dec [deg]
roll_nom	63.641005070596	Nominal Roll [deg]
revision	3	Processing version of data
ontime	10034.025877357	Sum of GTIs [s]
livetime	9902.9239423265	Livetime [s]
ontime2	10033.861717343	Sum of GTIs [s]
ontime3	10033.94379735	Sum of GTIs [s]
ontime6	10033.984837353	Sum of GTIs [s]
ontime7	10034.025877357	Sum of GTIs [s]
ontime8	10033.902757347	Sum of GTIs [s]
l2events	56425	Number of level 2 events



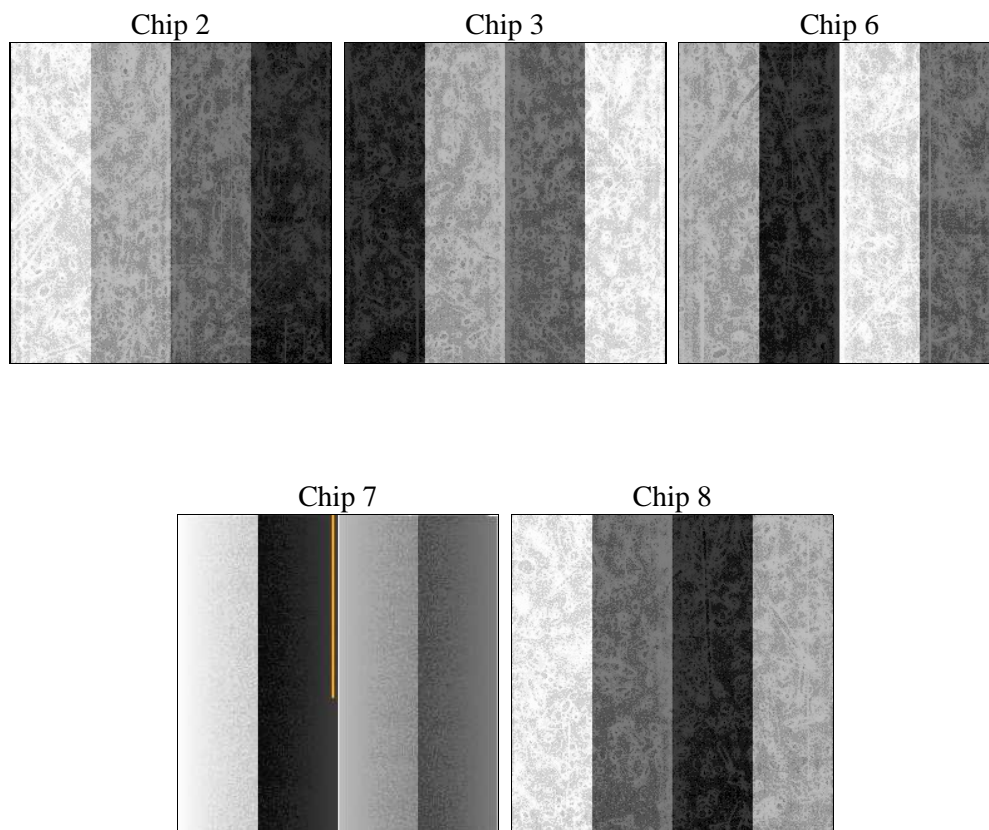
2 OBI

2.1 OBI

2.1.1 Images



2.1.2 Bias



2.1.3 Parameters

obi_num	1	Obi number	sched_exp_time	10000.000000	[s] Scheduled observation exposure time
ascdsver	8.5	Processing system revision	ontime	10034.025877357	Sum of GTIs [s]
caldsver	4.5.4	 	ontime2	10033.861717343	Sum of GTIs [s]
date	2012-12-10T09:43:12	Date and time of file creation	ontime3	10033.94379735	Sum of GTIs [s]
revision	3	Processing version of data	ontime6	10033.984837353	Sum of GTIs [s]
			ontime7	10034.025877357	Sum of GTIs [s]
			ontime8	10033.902757347	Sum of GTIs [s]
			l1events	365287	Number of level 1 events

2.1.4 Events

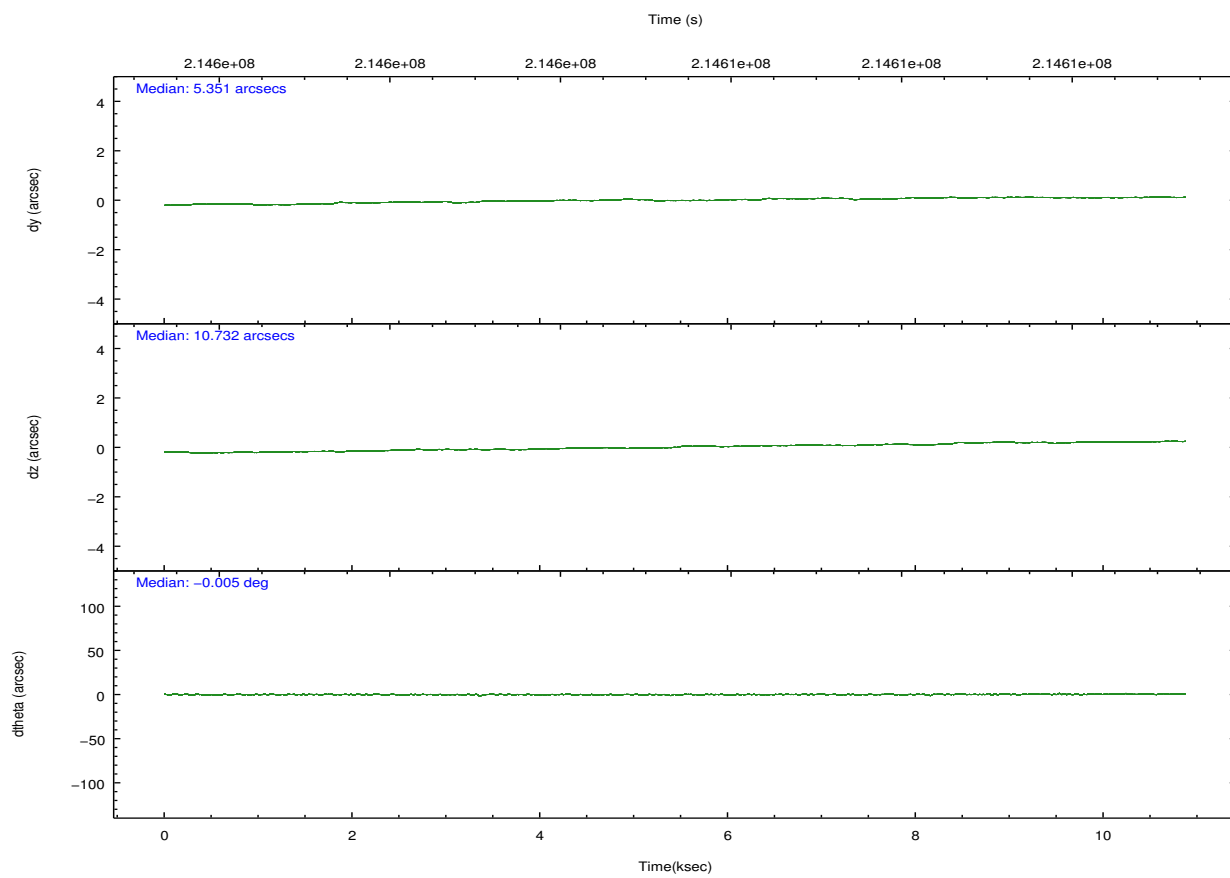
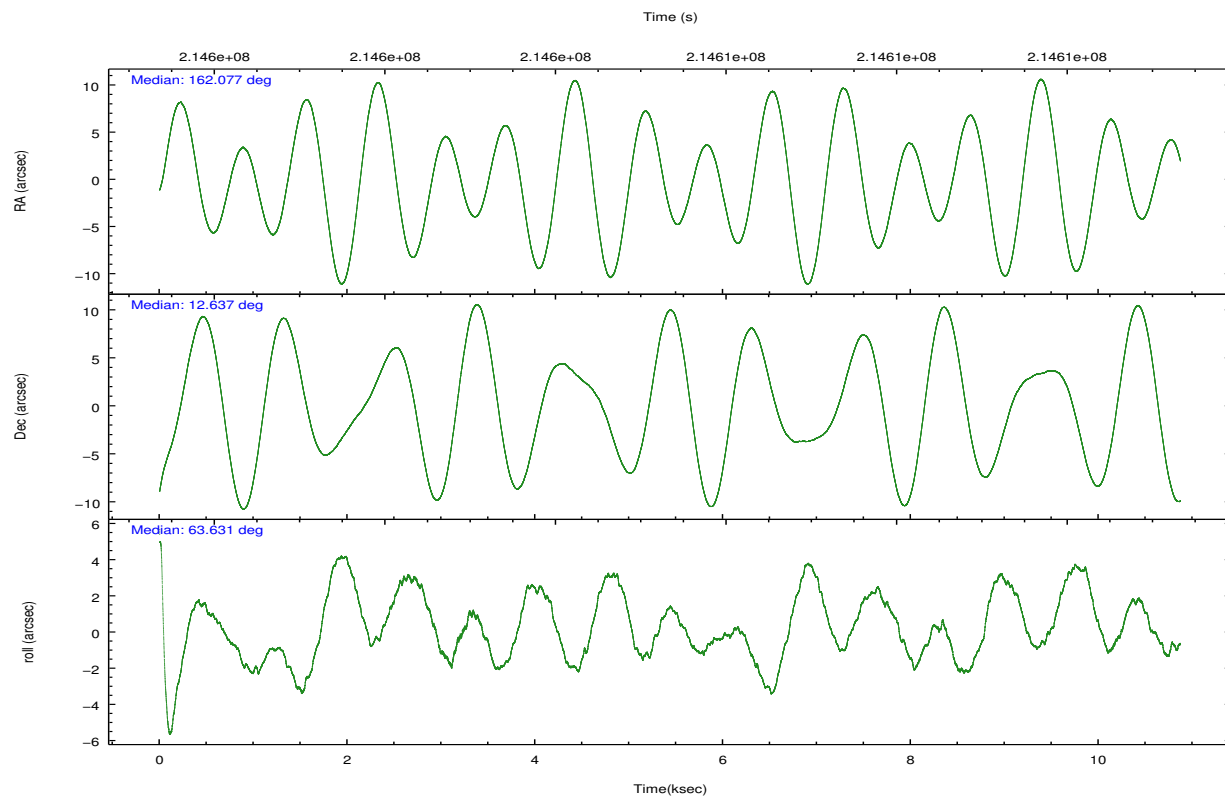
	ccd 2	ccd 3	ccd 6	ccd 7	ccd 8
level 1 events	69457	64993	73339	73923	83575
rejected events	62992	58996	66462	39873	64541
rejected %	90%	90%	90%	53%	77%

	ccd 2	ccd 3	ccd 6	ccd 7	ccd 8
grade 0 events	2322	2082	2314	3177	5762
	3%	3%	3%	4%	6%
grade 1 events	30	43	35	75	61
	0%	0%	0%	0%	0%
grade 2 events	1460	1320	1459	6912	4320
	2%	2%	1%	9%	5%
grade 3 events	738	691	853	3240	2092
	1%	1%	1%	4%	2%
grade 4 events	758	712	782	3158	1811
	1%	1%	1%	4%	2%
grade 5 events	2112	2520	2704	7699	3722
	3%	3%	3%	10%	4%
grade 6 events	1192	1193	1470	17583	5070
	1%	1%	2%	23%	6%
grade 7 events	60845	56432	63722	32079	60737
	87%	86%	86%	43%	72%

2.2 Compared Parameters

Parameter	Planned	Actual	Parameter	Planned	Actual
Instrument	ACIS	ACIS	Obspar format version number	7	7
Detector	ACIS-23678	ACIS-23678	Obspar file type	PREDICTED	ACTUAL
Grating	NONE	NONE	Obspar update status	NONE	UPDATED
Data mode	VFAINT	VFAINT	Number of optional ACIS chips dropped	0	0
Observation mode	POINTING	POINTING	On-chip summing requested	N	N
[deg] Pointing RA	162.078878	162.076769262192	Subarray requested	NONE	NONE
[deg] Pointing Dec	12.610352	12.63751292621019	Alternating exposures requested	N	N
[deg] Pointing Roll	63.483907	63.64100507059623	[s] Primary exposure time	0.000000	3.1
[mm] SIM focus pos	-0.684267	-0.6828225247311905			
[mm] SIM defocus	0	0.001444936568705701			
[mm] SIM translation stage pos	-190.132523	-190.1425803651734			
[mm] SIM translation stage offset	0	0.01005778216563158			
[s] Observation start time (MET)	214600781.184000	214599452.55285			
Observation start date	2004-10-19T19:18:37	2004-10-19T18:57:32			
[s] Observation end time (MET)	214610781.184000	214611776.1284			
Observation end date	2004-10-19T22:05:17	2004-10-19T22:22:56			
Read mode	TIMED	TIMED			

2.3 Aspect

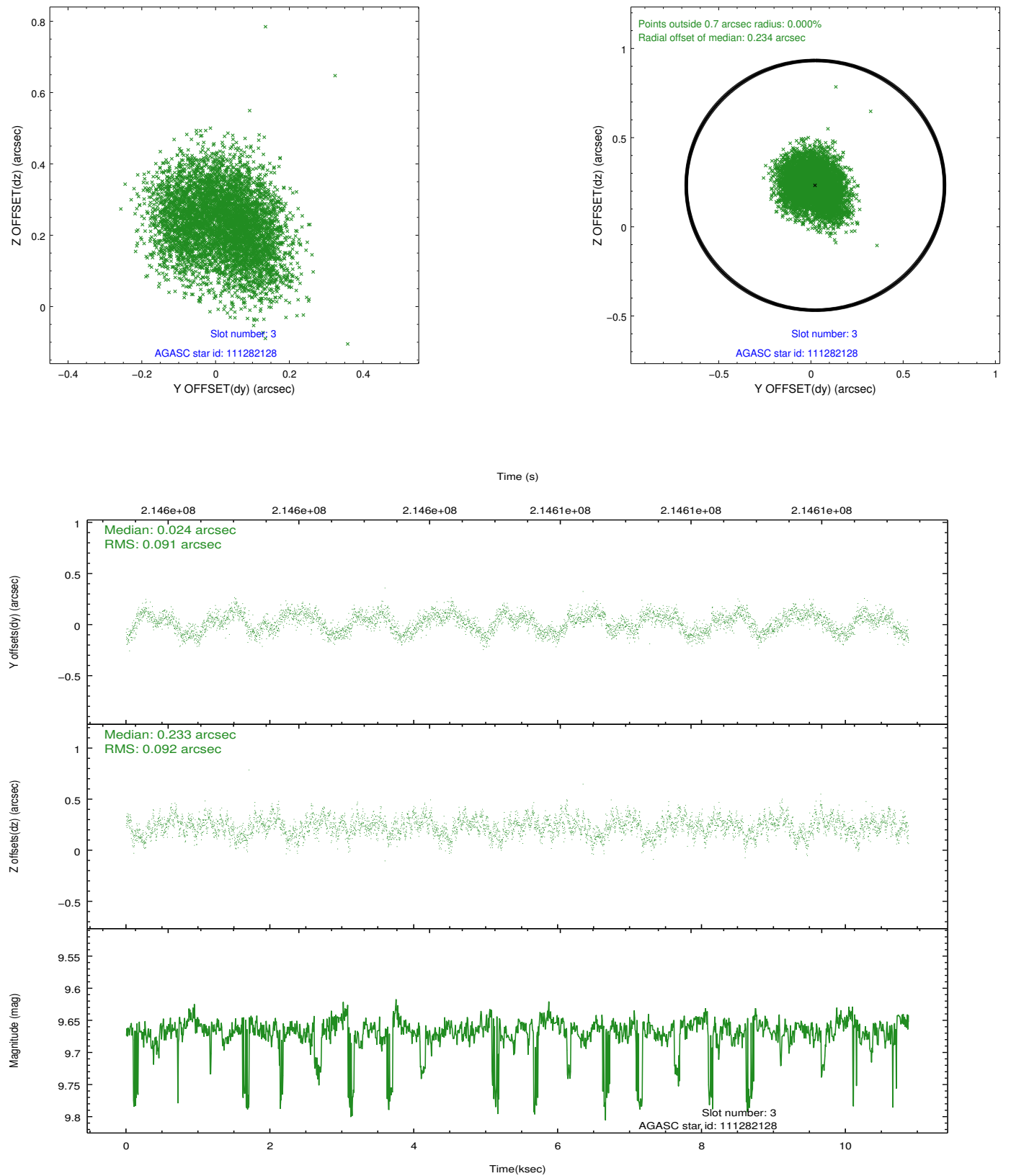


Slot Statistics

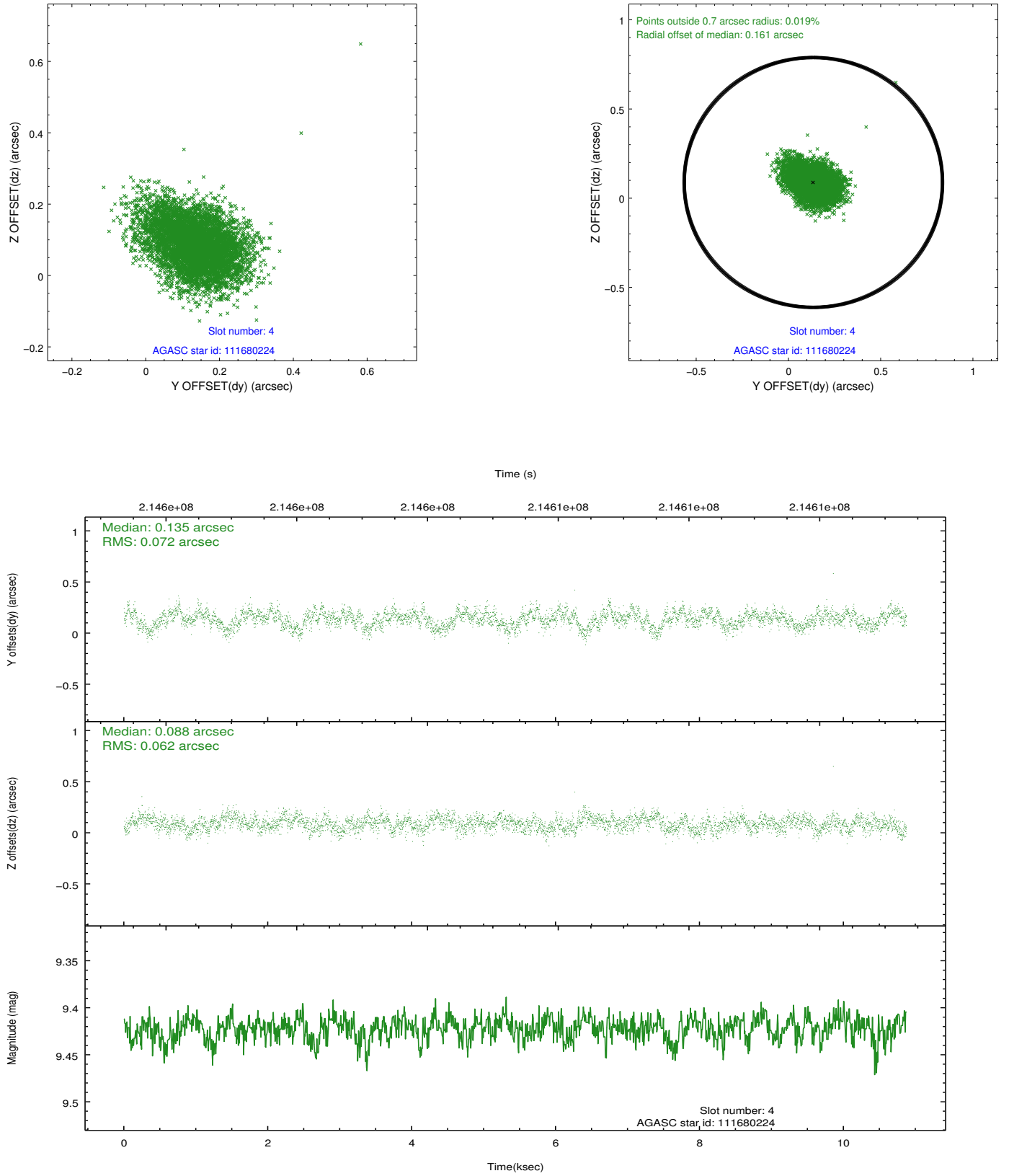
slot	status	id	mag	n_pts	med_dy	med_dz	dr1	dr2	ra	dec	mean_y	mean_z
0	FID	ACIS-S-2	7.10	2652	-0.076	-0.033	0.007	0.012	0.000000	0.000000	-758.10	-1732.00
1	FID	ACIS-S-4	7.21	2652	0.127	0.045	0.007	0.016	0.000000	0.000000	2155.13	176.11
2	FID	ACIS-S-5	7.23	2652	-0.082	-0.004	0.007	0.014	0.000000	0.000000	-1810.37	170.21
3	GUIDE	111282128	9.67	5260	0.024	0.233	0.139	0.216	162.570224	12.424897	175.71	-1842.68
4	GUIDE	111680224	9.42	5297	0.135	0.088	0.100	0.164	161.634669	12.601106	-725.28	1381.95
5	GUIDE	111682696	8.38	5302	-0.094	-0.165	0.064	0.102	161.852703	13.379057	2122.54	1945.17
6	GUIDE	111683728	7.31	5305	-0.044	-0.289	0.065	0.102	161.580479	12.747846	-336.69	1787.81
7	GUIDE	111684072	8.42	5298	-0.014	0.137	0.062	0.100	162.537547	12.809514	1361.92	-1119.21

2.4 Star Slots

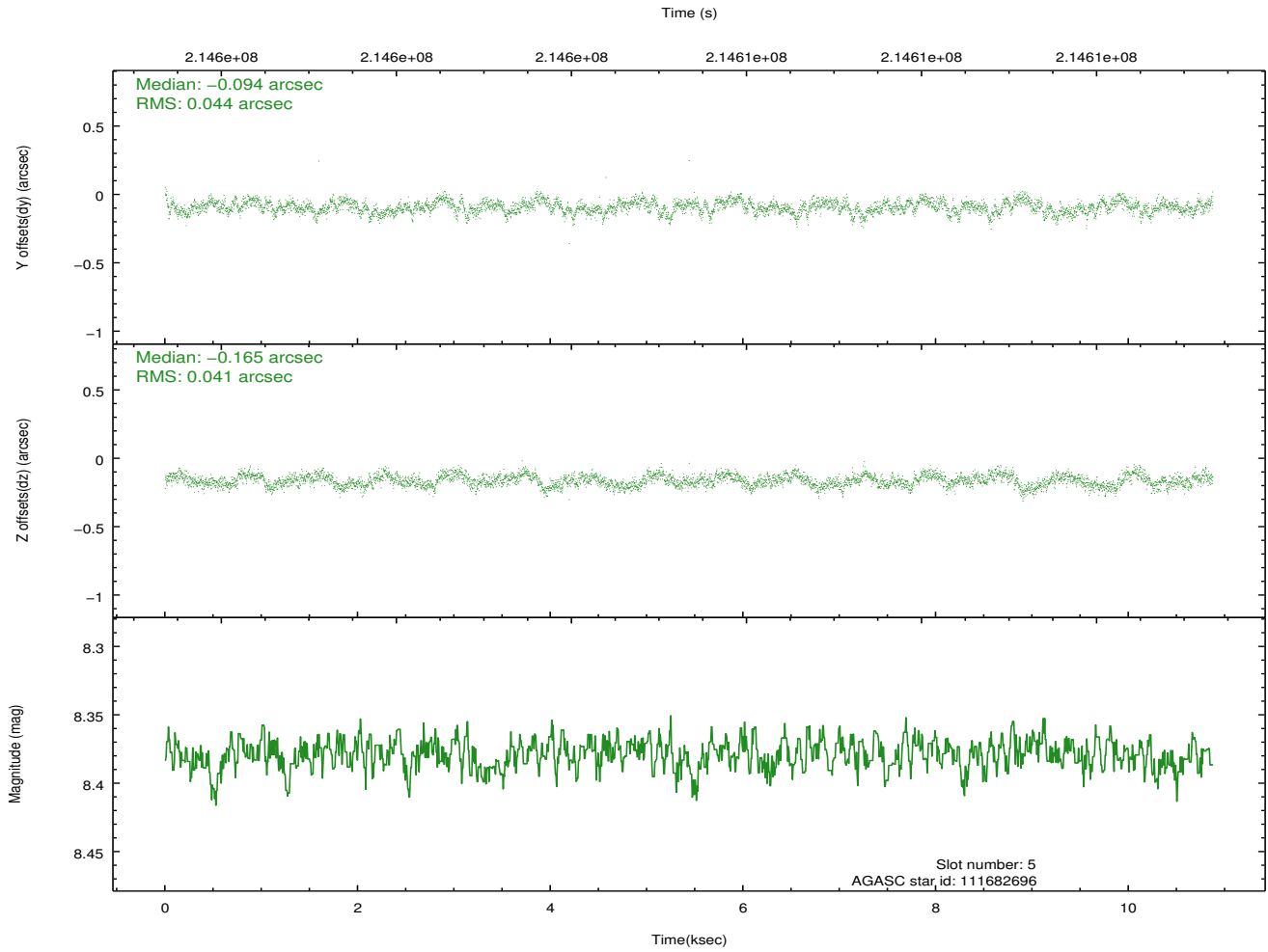
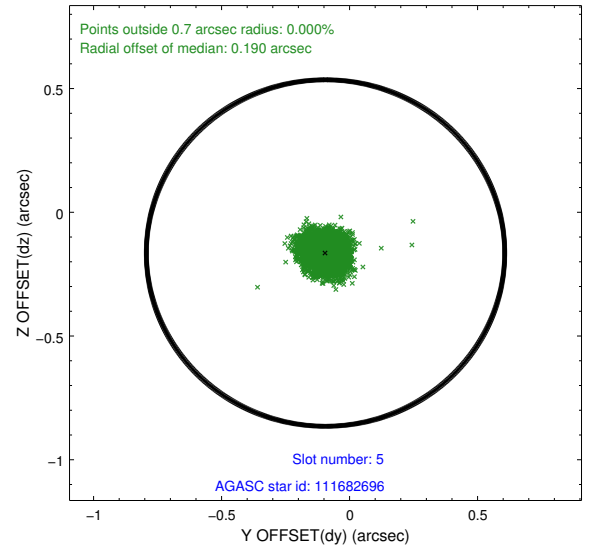
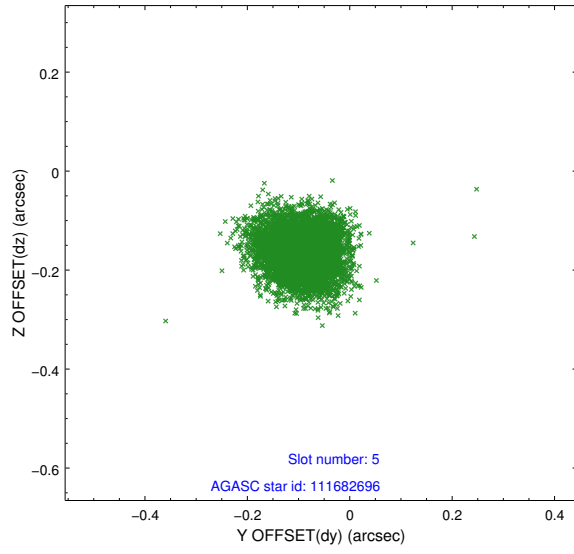
2.4.1 Slot 3



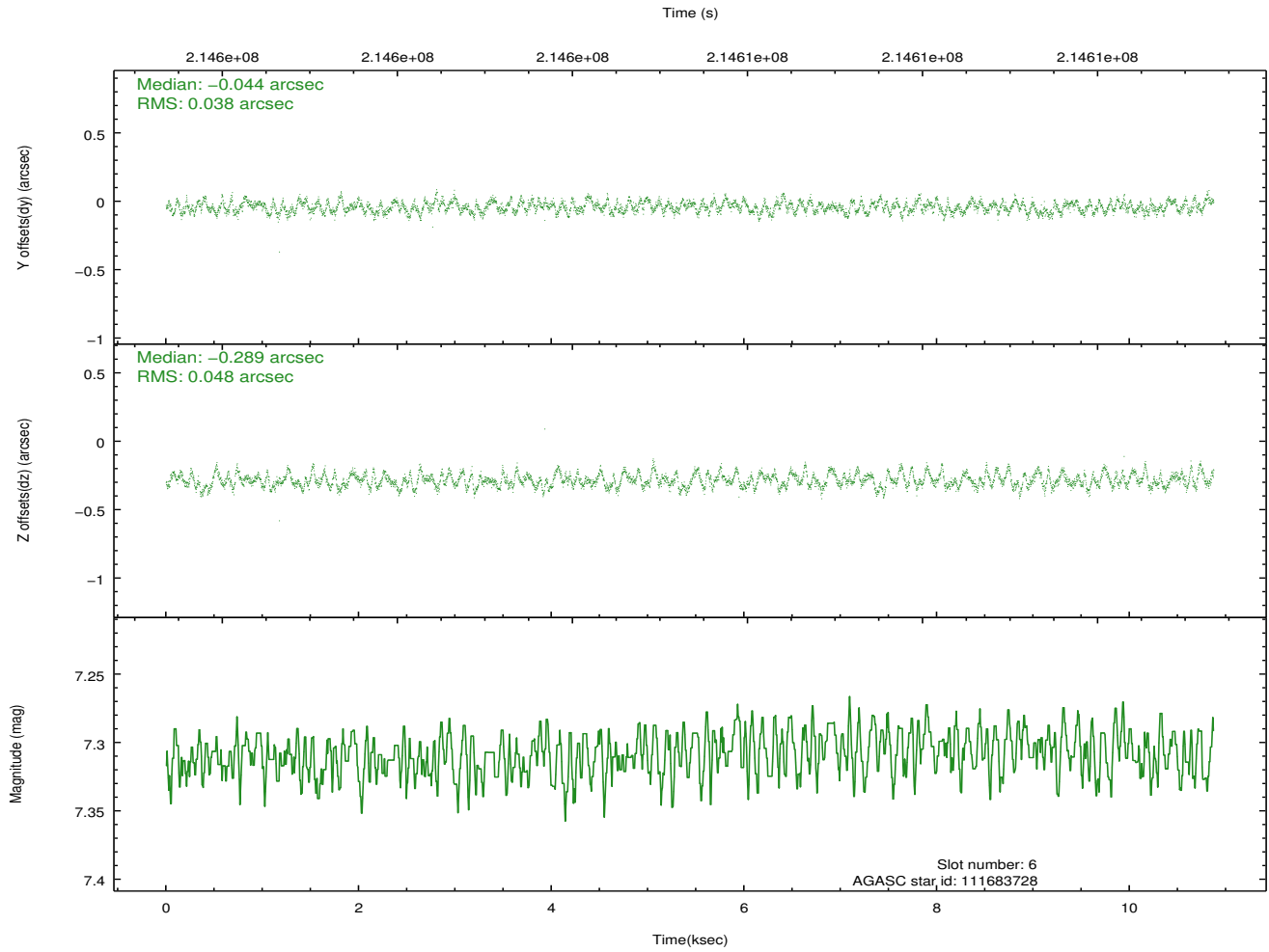
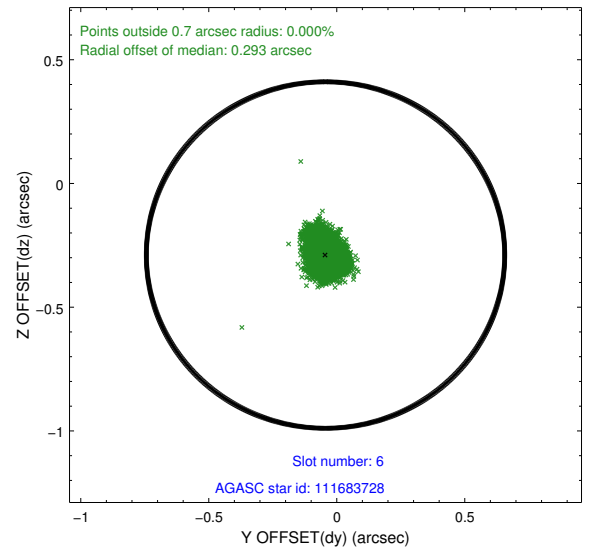
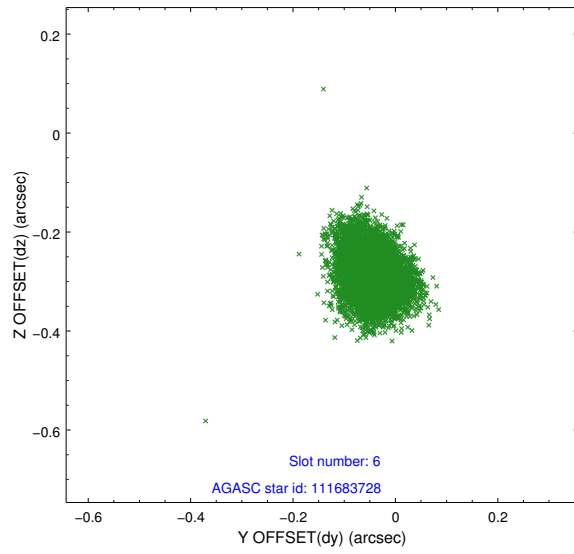
2.4.2 Slot 4



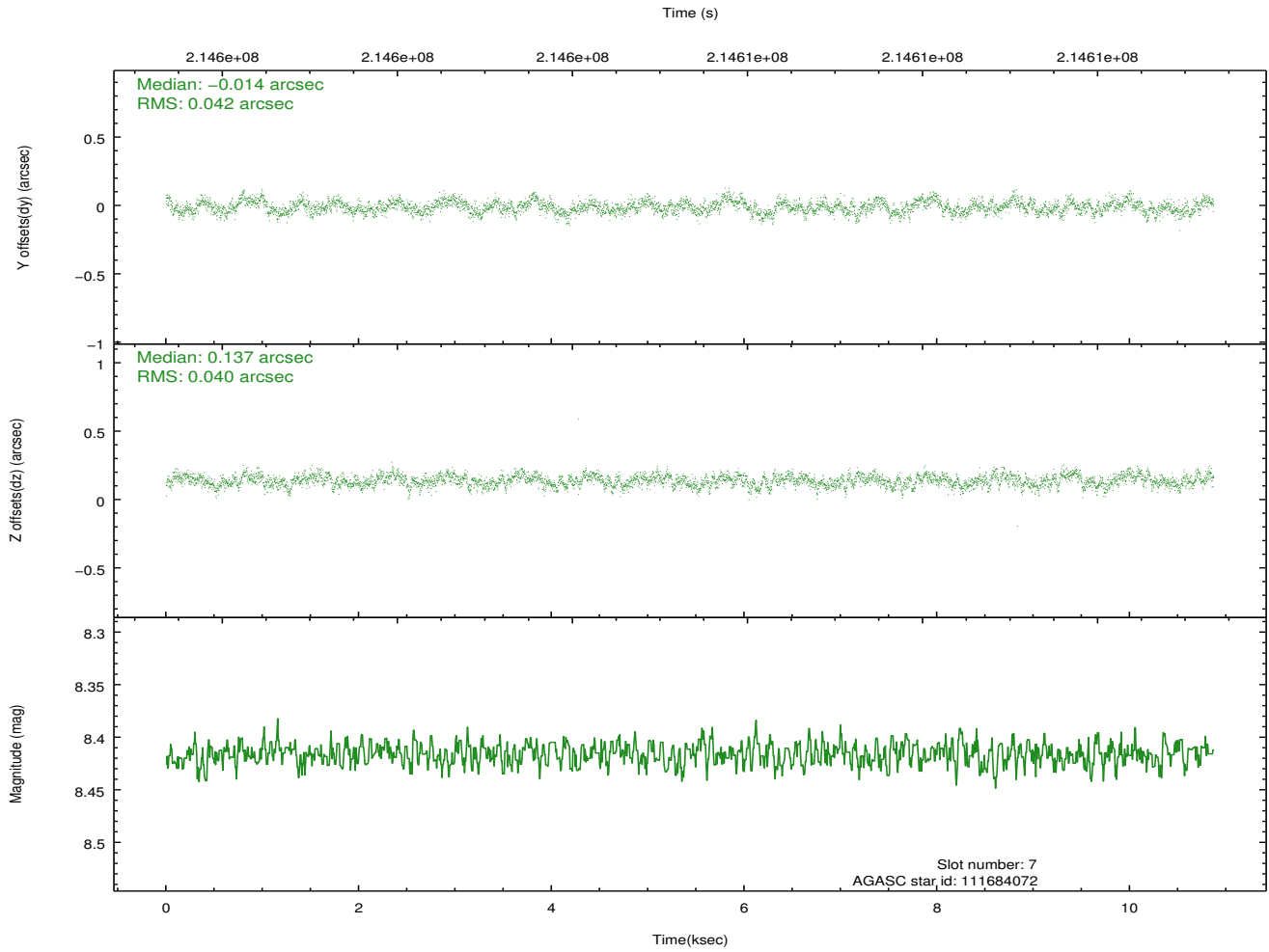
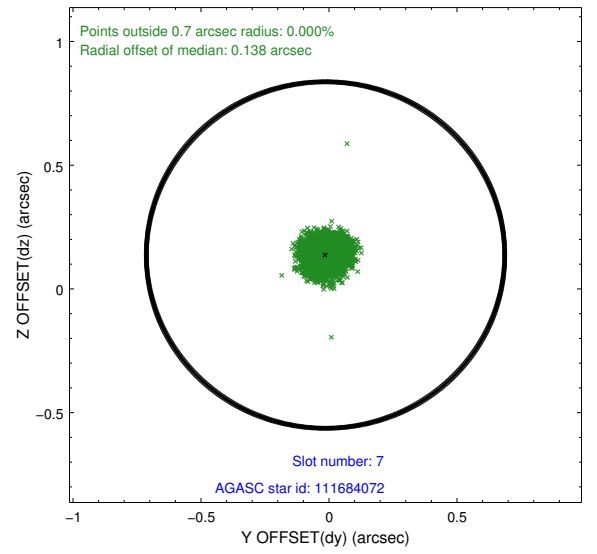
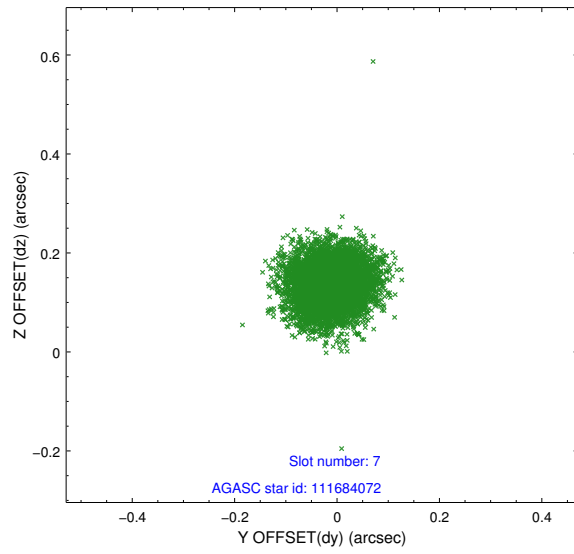
2.4.3 Slot 5



2.4.4 Slot 6

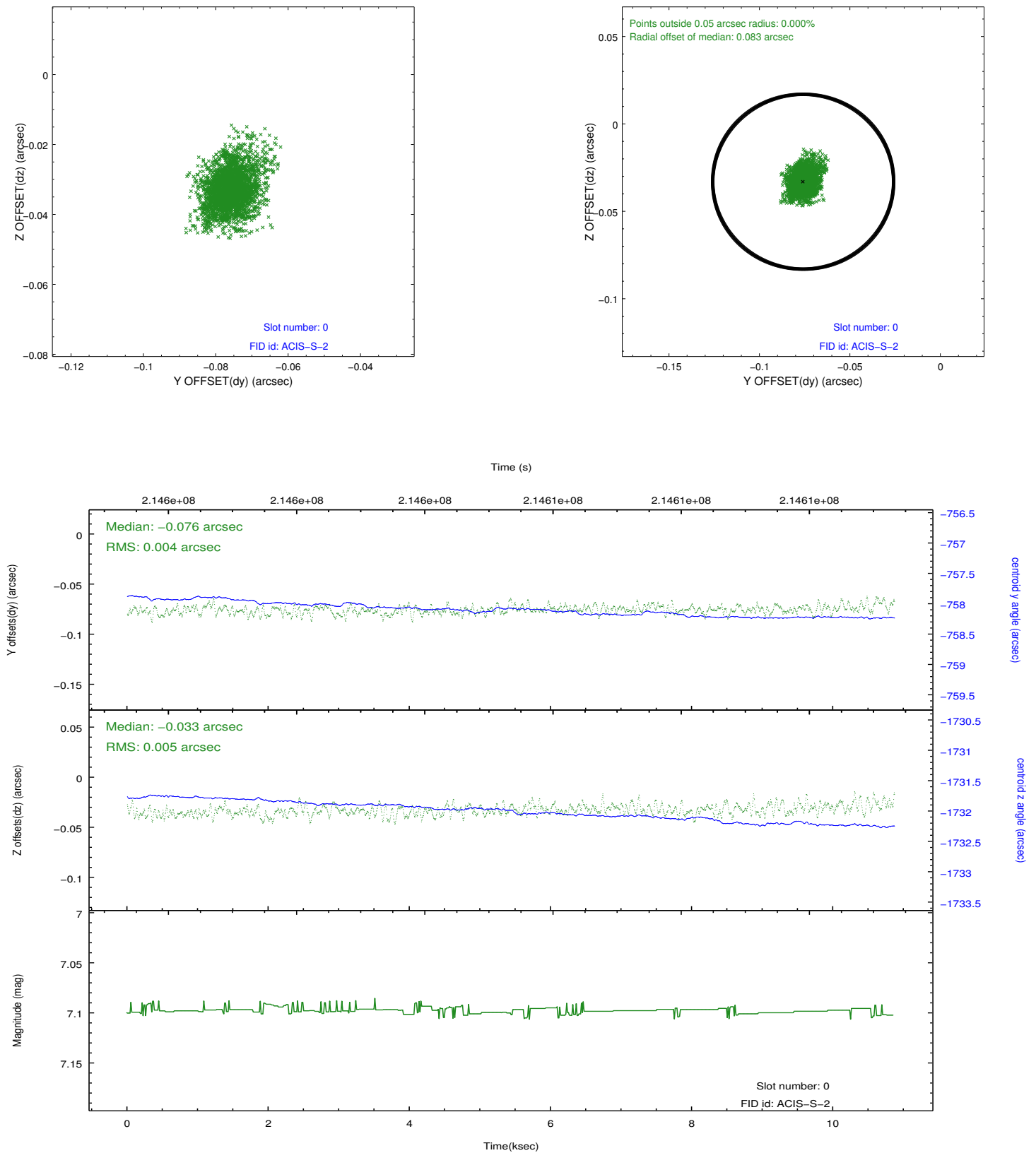


2.4.5 Slot 7

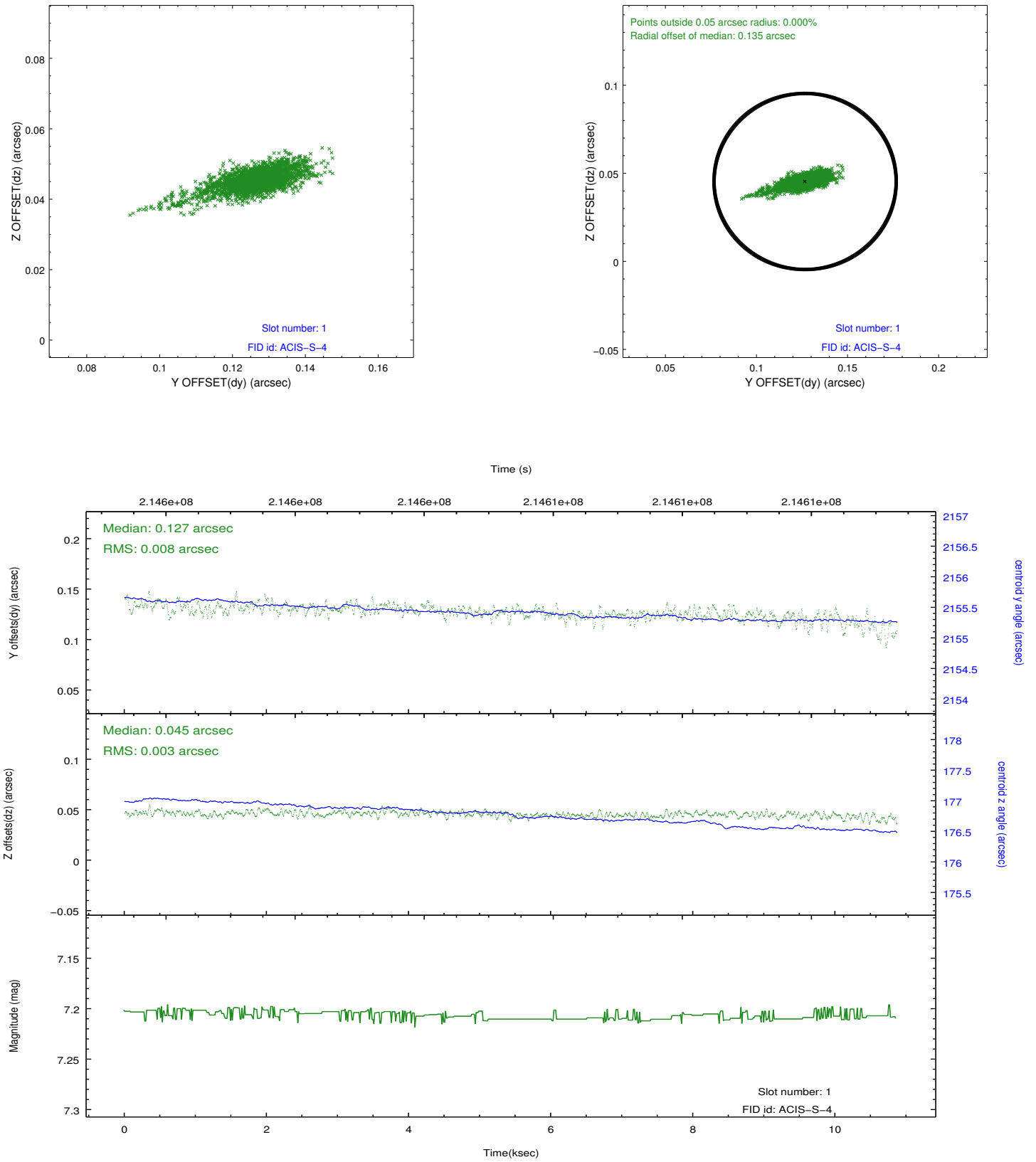


2.5 FID Slots

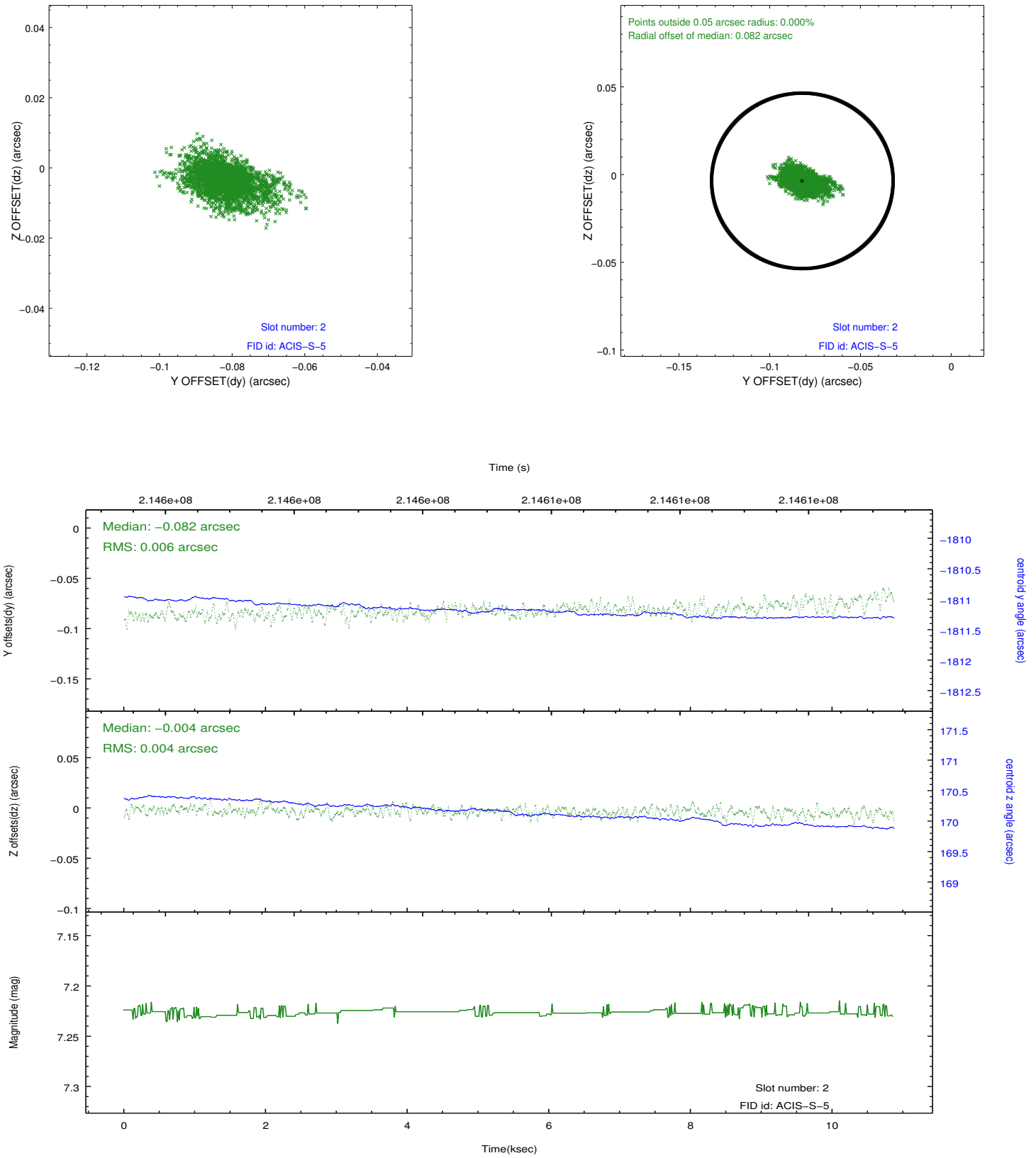
2.5.1 Slot 0



2.5.2 Slot 1



2.5.3 Slot 2



A Summary

A.1 Status

V&V Scientist	Jen Lauer
V&V Date (YYYY-MM-DD)	2013.01.03
V&V Edition	1
V&V Disposition and Status	OK
V&V Charge Time	10.034

A.2 Comments