

V&V Reference Report

L2 ASCDS Version : 8.5.1.1

Observation 4642 - L2 Version 5
Chandra X-Ray Center

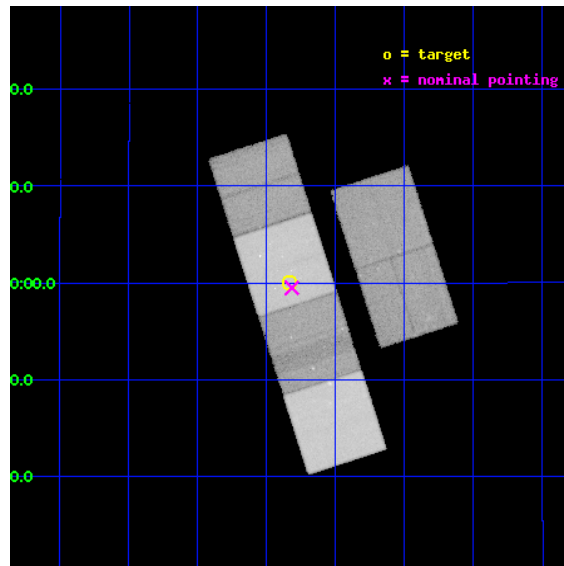
L2 Processing Date : Feb 15 2013

Contents

1	Front	2
2	OBI	3
2.1	OBI	3
2.1.1	Images	3
2.1.2	Bias	3
2.1.3	Parameters	4
2.1.4	Events	4
2.2	Compared Parameters	5
2.3	Aspect	6
2.4	Star Slots	9
2.4.1	Slot 3	9
2.4.2	Slot 4	10
2.4.3	Slot 5	11
2.4.4	Slot 6	12
2.4.5	Slot 7	13
2.5	FID Slots	14
2.5.1	Slot 0	14
2.5.2	Slot 1	15
2.5.3	Slot 2	16
A	Summary	17
A.1	Status	17
A.2	Comments	17

1 Front

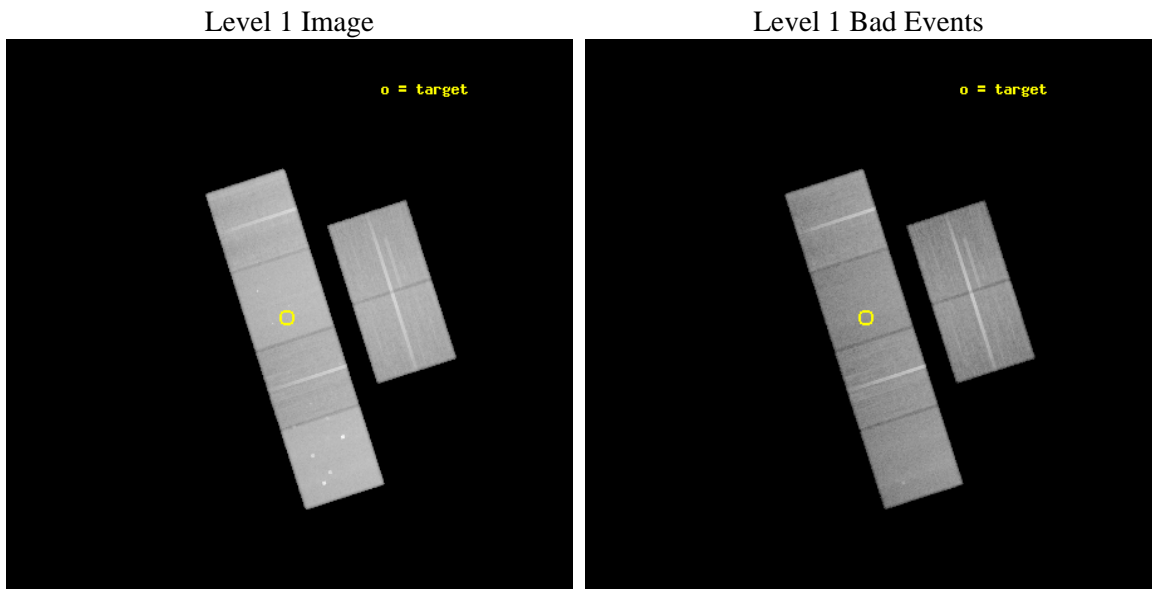
seq_num	500461	Sequence number
obs_id	4642	Observation id
title	The X-ray Emission from Old Supernovae	Proposal title
observer	Dr. Eric Schlegel	Principal investigator
object	SN1988Z	Source name
dtcycle	0	
cycle	P	events from which exps? Prim/Second/Both
ra_targ	162.95875	Observer's specified target RA [deg]
dec_targ	16.000194	Observer's specified target Dec [deg]
ra_nom	162.95404455136	Nominal RA [deg]
dec_nom	15.991647409689	Nominal Dec [deg]
roll_nom	252.18181288171	Nominal Roll [deg]
revision	5	Processing version of data
ontime	47484.676922232	Sum of GTIs [s]
livetime	46883.397351203	Livetime [s]
ontime2	47340.499776393	Sum of GTIs [s]
ontime3	47343.904737502	Sum of GTIs [s]
ontime5	47484.67694211	Sum of GTIs [s]
ontime6	47345.31519109	Sum of GTIs [s]
ontime7	47484.676922232	Sum of GTIs [s]
ontime8	47373.114619315	Sum of GTIs [s]
l2events	734648	Number of level 2 events



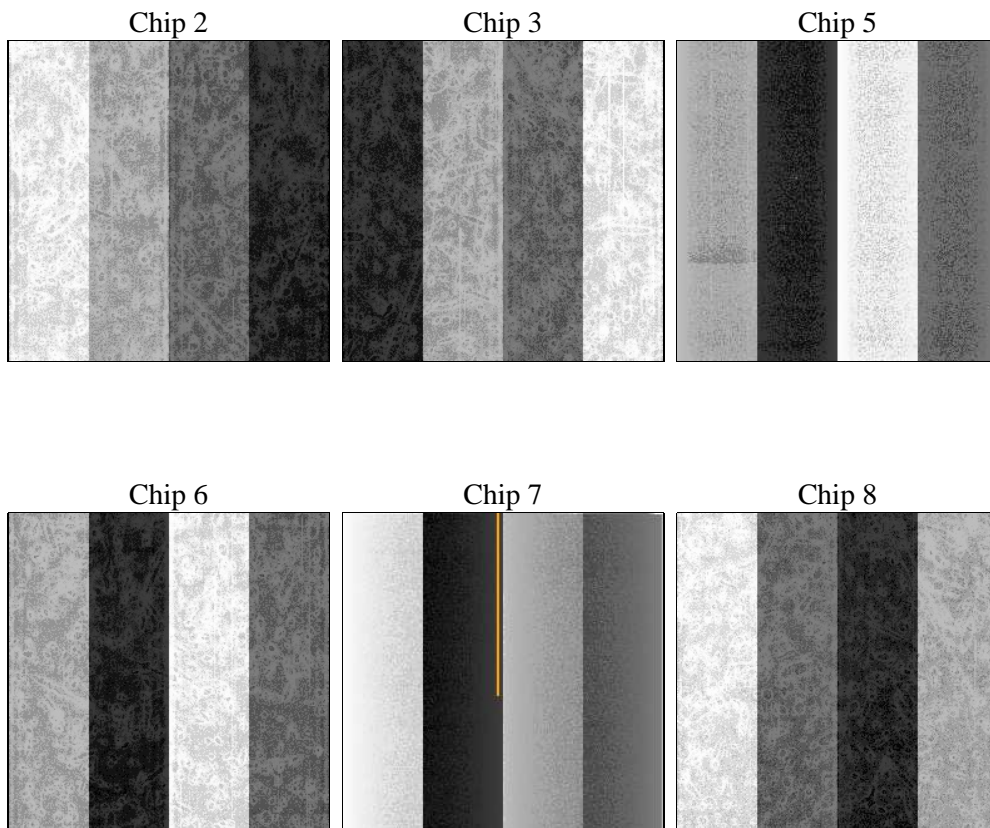
2 OBI

2.1 OBI

2.1.1 Images



2.1.2 Bias



2.1.3 Parameters

obi_num	0	Obi number	sched_exp_time	48459.373000	[s] Scheduled observation exposure time
ascdsver	8.5.1.1	Processing system revision	ontime	47484.676922232	Sum of GTIs [s]
caldsver	4.5.5	 	ontime2	47340.499776393	Sum of GTIs [s]
date	2013-02-15T21:38:14	Date and time of file creation	ontime3	47343.904737502	Sum of GTIs [s]
revision	5	Processing version of data	ontime5	47484.67694211	Sum of GTIs [s]
			ontime6	47345.31519109	Sum of GTIs [s]
			ontime7	47484.676922232	Sum of GTIs [s]
			ontime8	47373.114619315	Sum of GTIs [s]
			l1events	2707787	Number of level 1 events

2.1.4 Events

	ccd 2	ccd 3	ccd 5	ccd 6	ccd 7	ccd 8		ccd 2	ccd 3	ccd 5	ccd 6	ccd 7	ccd 8
level 1 events	395584	371175	566899	384748	513491	475890	grade 0 events	40048	38528	35578	35692	22940	51779
rejected events	324871	301808	291080	315460	282768	350168		10%	10%	6%	9%	4%	10%
rejected %	82%	81%	51%	81%	55%	73%	grade 1 events	381	393	1016	273	449	412
								0%	0%	0%	0%	0%	0%
							grade 2 events	11640	11416	80818	12696	44555	24677
								2%	3%	14%	3%	8%	5%
							grade 3 events	5135	5263	10889	5145	19502	11490
								1%	1%	1%	1%	3%	2%
							grade 4 events	5132	5279	10468	5007	19573	11154
								1%	1%	1%	1%	3%	2%
							grade 5 events	13967	15388	38556	16267	45624	20815
								3%	4%	6%	4%	8%	4%
							grade 6 events	9541	9725	139813	11628	125979	27883
								2%	2%	24%	3%	24%	5%
							grade 7 events	309740	285183	249761	298040	234869	327680
								78%	76%	44%	77%	45%	68%

2.2 Compared Parameters

Parameter	Planned	Actual
Instrument	ACIS	ACIS
Detector	ACIS-235678	ACIS-235678
Grating	NONE	NONE
Data mode	FAINT	FAINT
Observation mode	POINTING	POINTING
[deg] Pointing RA	162.947685	162.9540445513593
[deg] Pointing Dec	16.018182	15.99164740968926
[deg] Pointing Roll	252.026935	252.1818128817062
[mm] SIM focus pos	-0.6828225247311905	-0.6828225247311905
[mm] SIM defocus	0.001444942264670179	0.001444942264670179
[mm] SIM translation stage pos	-190.1425803651734	-190.1425803651734
[mm] SIM translation stage offset	0.01005726120618533	0.01005726120618533
[s] Observation start time (MET)	204875537.184000	204875537.184
Observation start date	2004-06-29T05:51:13	2004-06-29T05:52:17
[s] Observation end time (MET)	204923125.000000	204923125
Observation end date	2004-06-29T19:05:25	2004-06-29T19:05:24
Read mode	TIMED	TIMED

Parameter	Planned	Actual
Obspar format version number	7	7
Obspar file type	PREDICTED	ACTUAL
Obspar update status	OVERRIDE	OVERRIDE
Number of optional ACIS chips dropped	0	0
On-chip summing requested	N	N
Subarray requested	NONE	NONE
Alternating exposures requested	N	N
[s] Primary exposure time	3.2	3.2

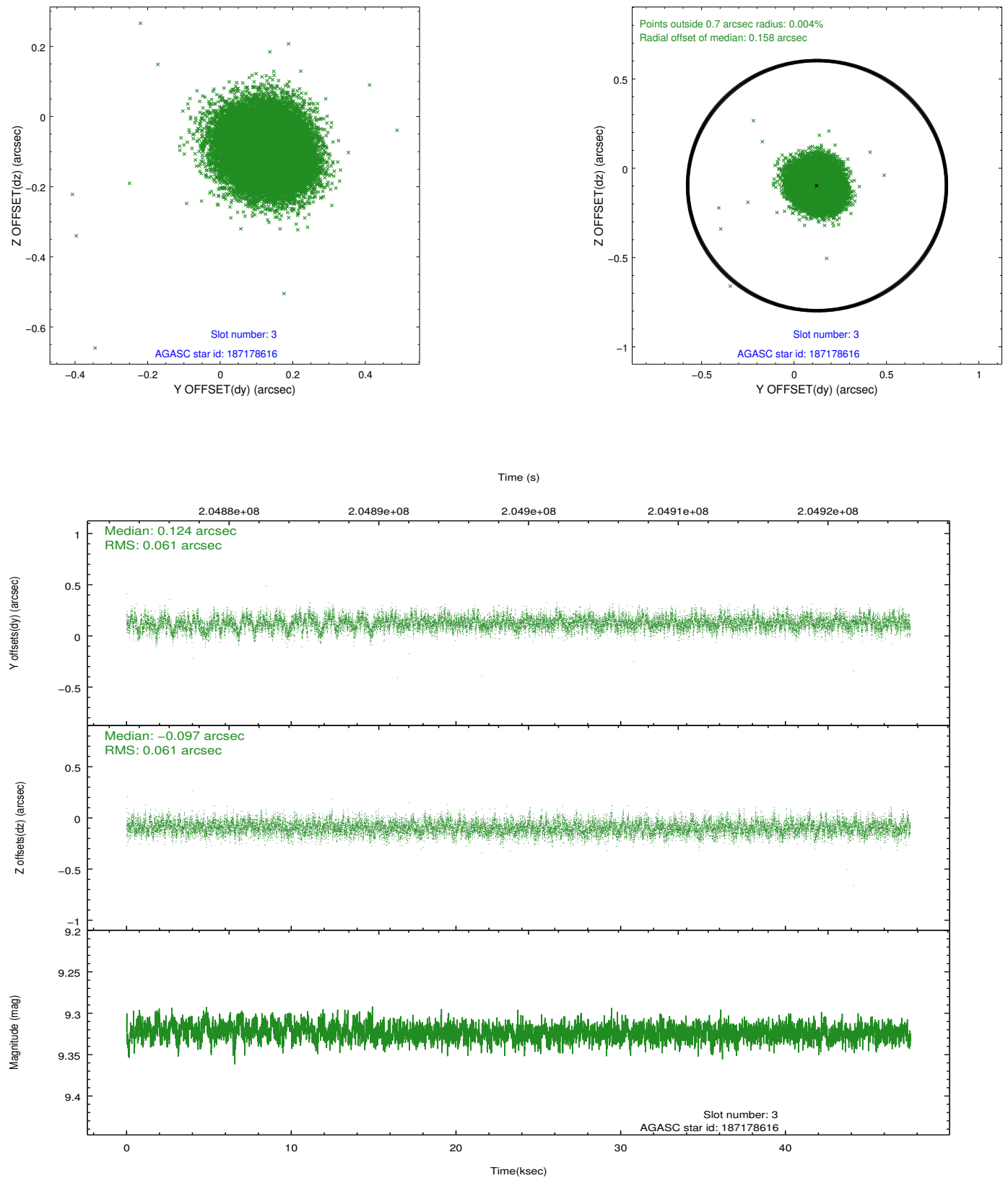
2.3 Aspect

Slot Statistics

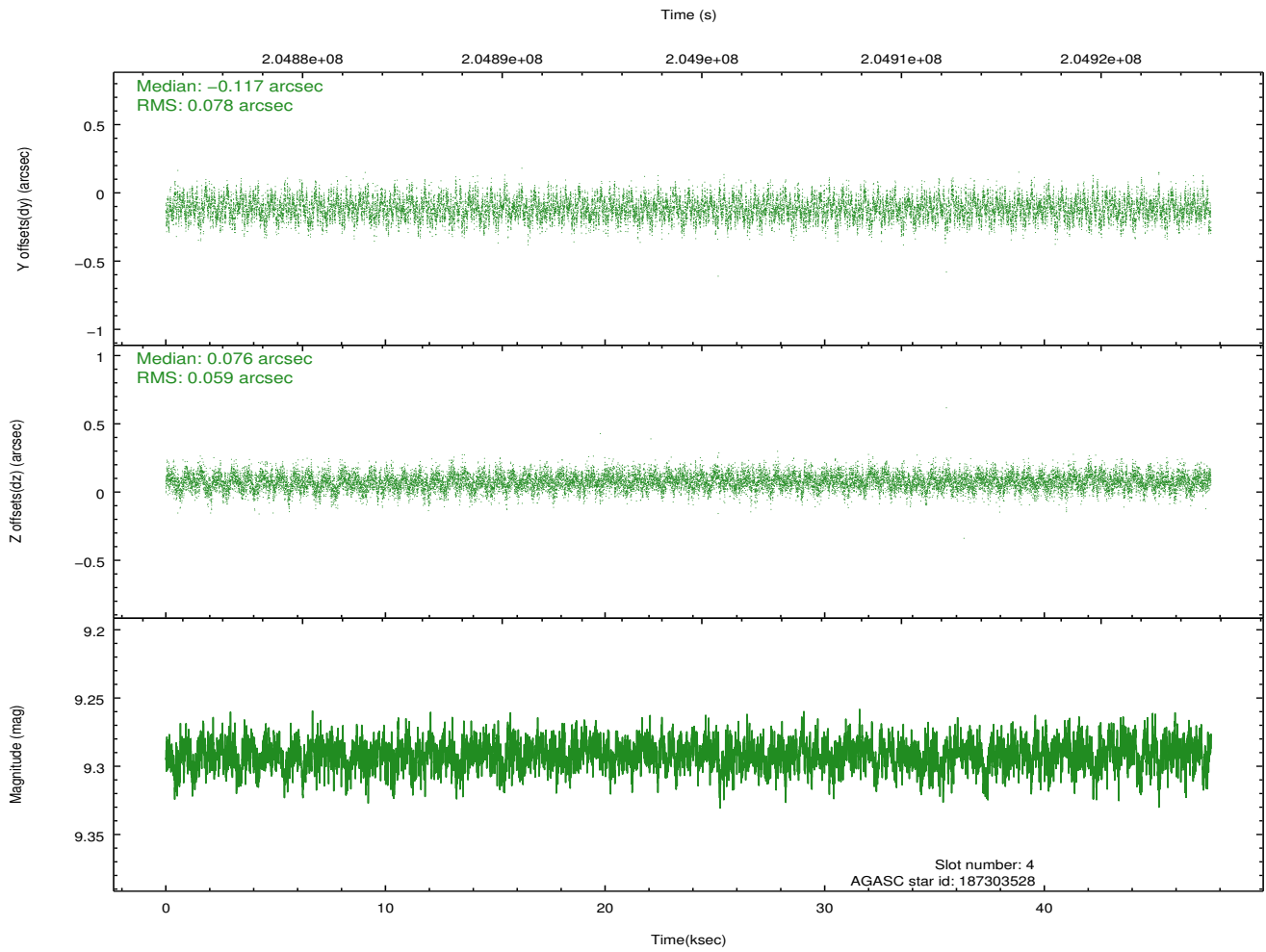
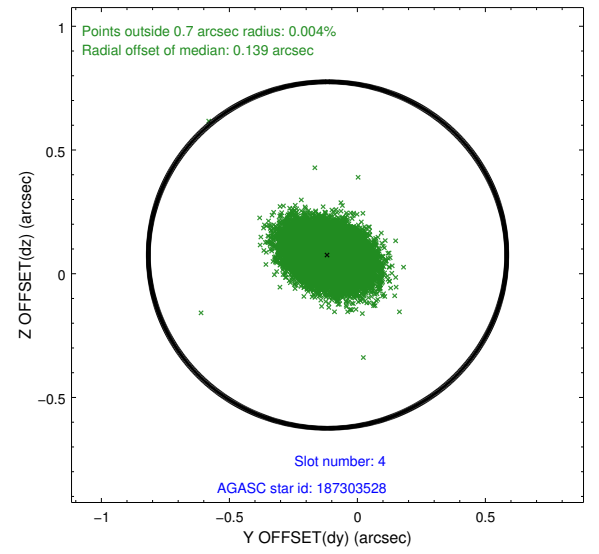
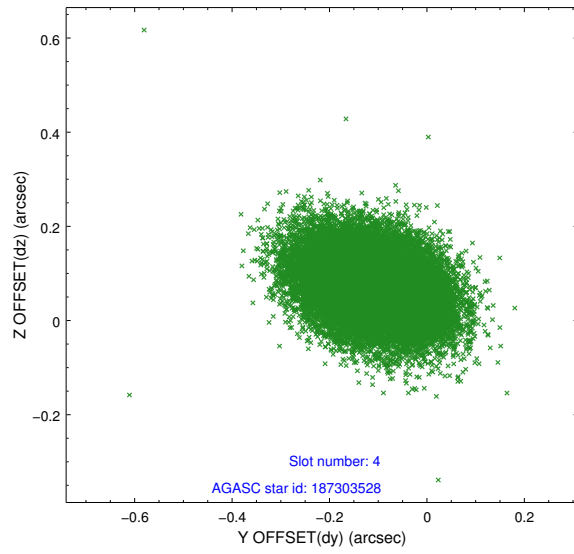
slot	status	id	mag	n_pts	med_dy	med_dz	dr1	dr2	ra	dec	mean_y	mean_z
0	FID	ACIS-S-2	7.10	11602	-0.056	-0.019	0.010	0.016	0.000000	0.000000	-759.26	-1732.22
1	FID	ACIS-S-4	7.20	11600	0.077	0.032	0.009	0.018	0.000000	0.000000	2154.13	176.37
2	FID	ACIS-S-5	7.23	11599	-0.052	-0.005	0.008	0.013	0.000000	0.000000	-1812.14	169.93
3	GUIDE	187178616	9.32	23183	0.124	-0.097	0.092	0.148	162.342515	15.877179	1127.38	-1837.17
4	GUIDE	187303528	9.29	23188	-0.117	0.076	0.104	0.169	163.727744	16.389121	-2106.56	2149.05
5	GUIDE	187303568	8.54	23200	0.096	-0.143	0.078	0.122	163.012246	16.095574	-333.69	126.60
6	GUIDE	187306752	9.28	23190	0.061	0.164	0.095	0.152	163.240541	15.817007	375.31	1188.51
7	GUIDE	187310592	9.45	23191	-0.164	-0.001	0.090	0.147	162.727803	16.639080	-1892.06	-1411.60

2.4 Star Slots

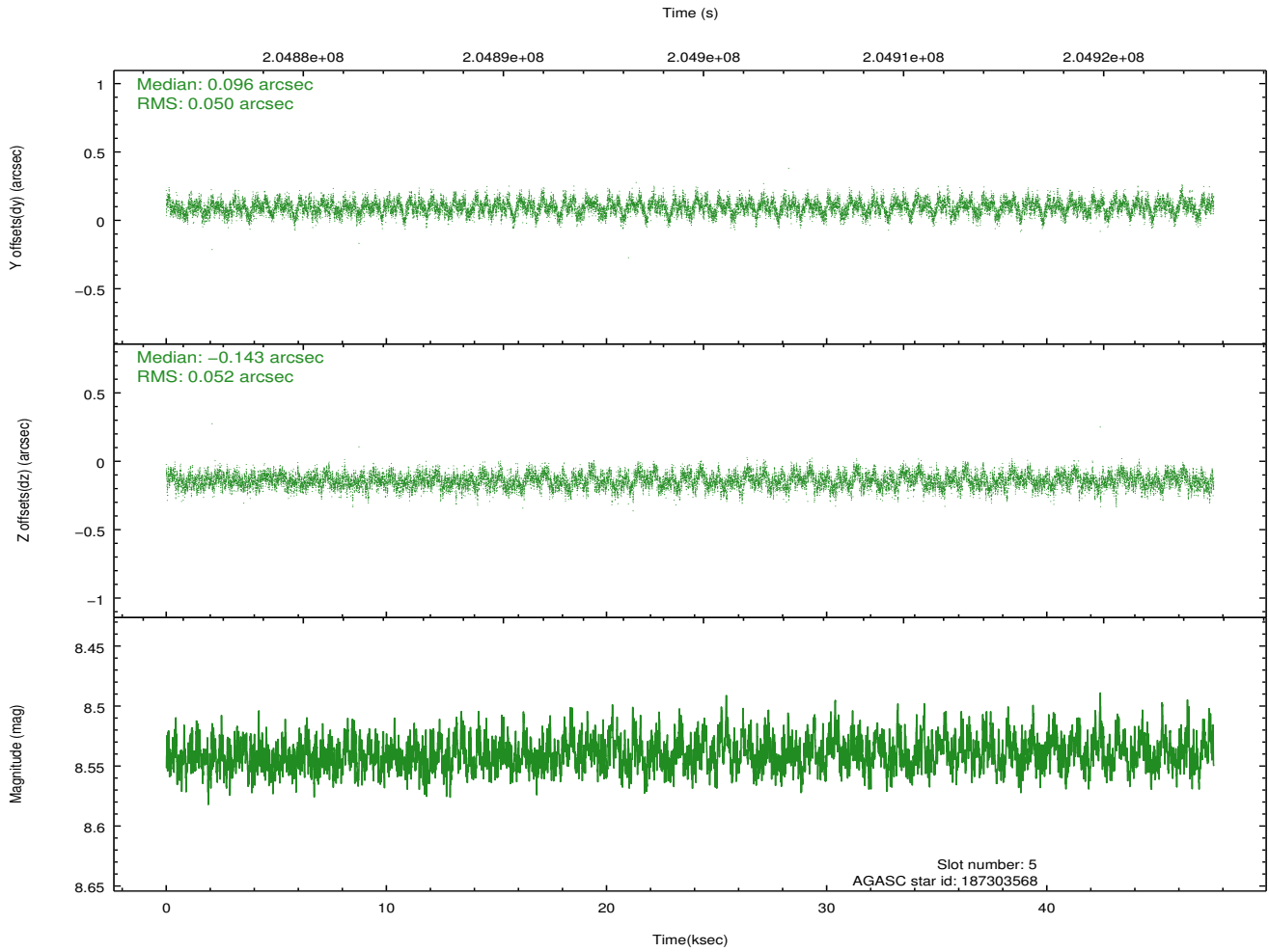
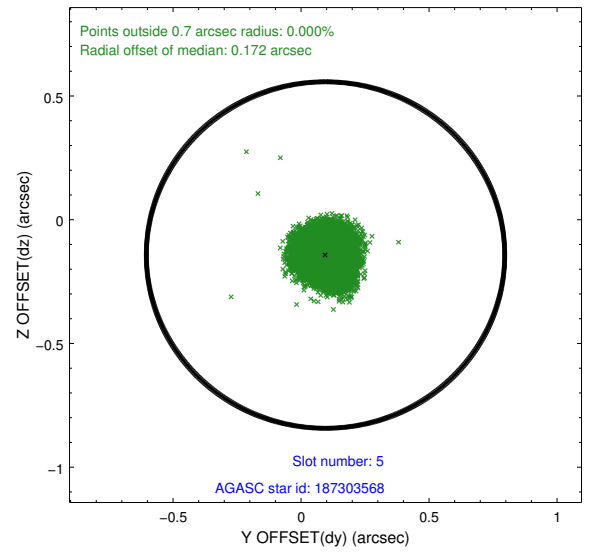
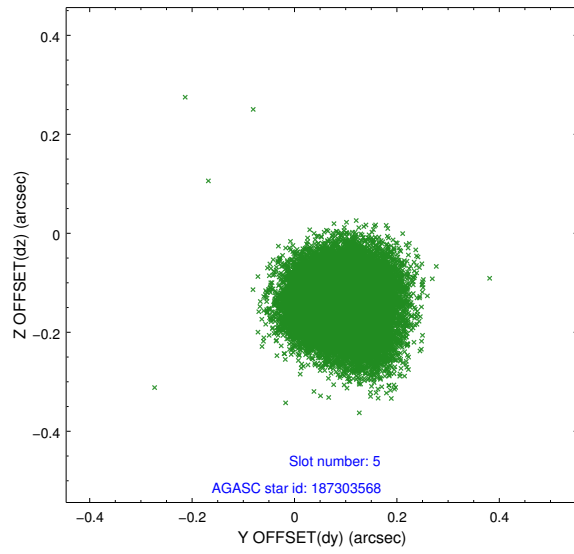
2.4.1 Slot 3



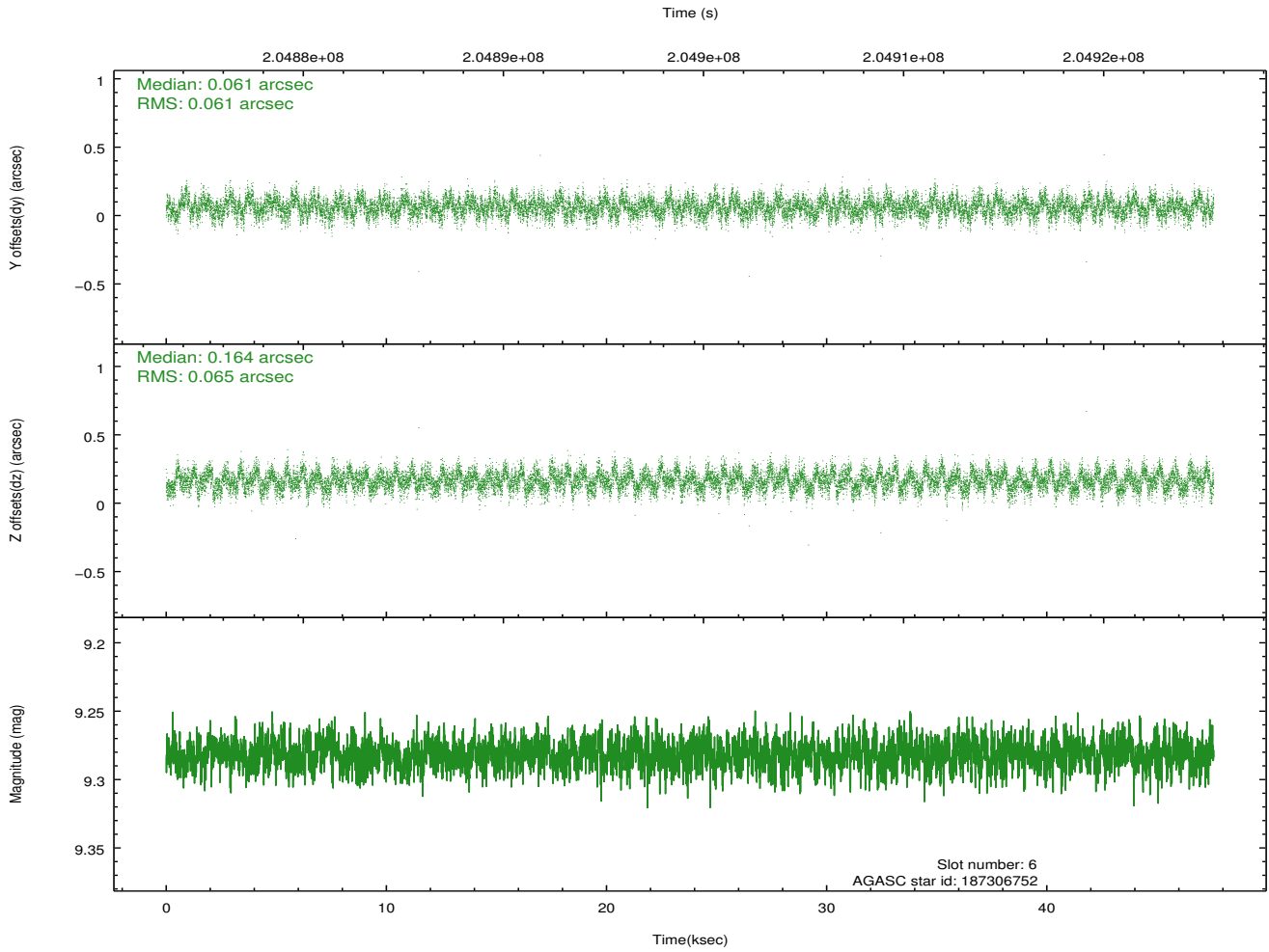
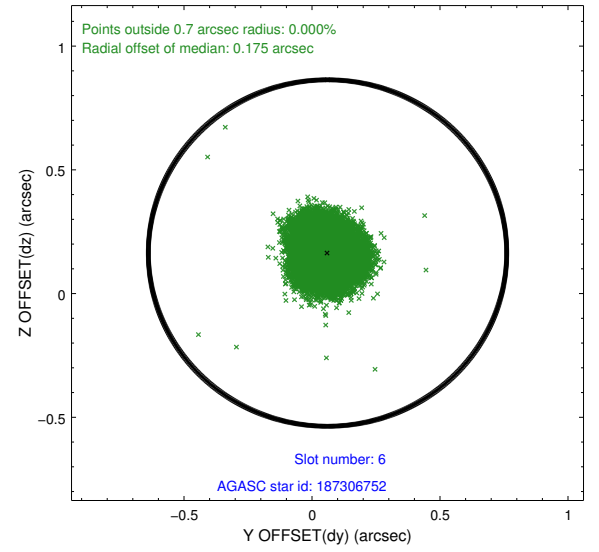
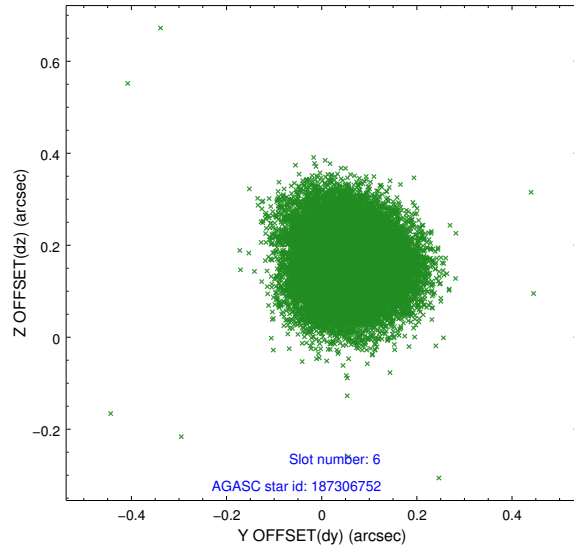
2.4.2 Slot 4



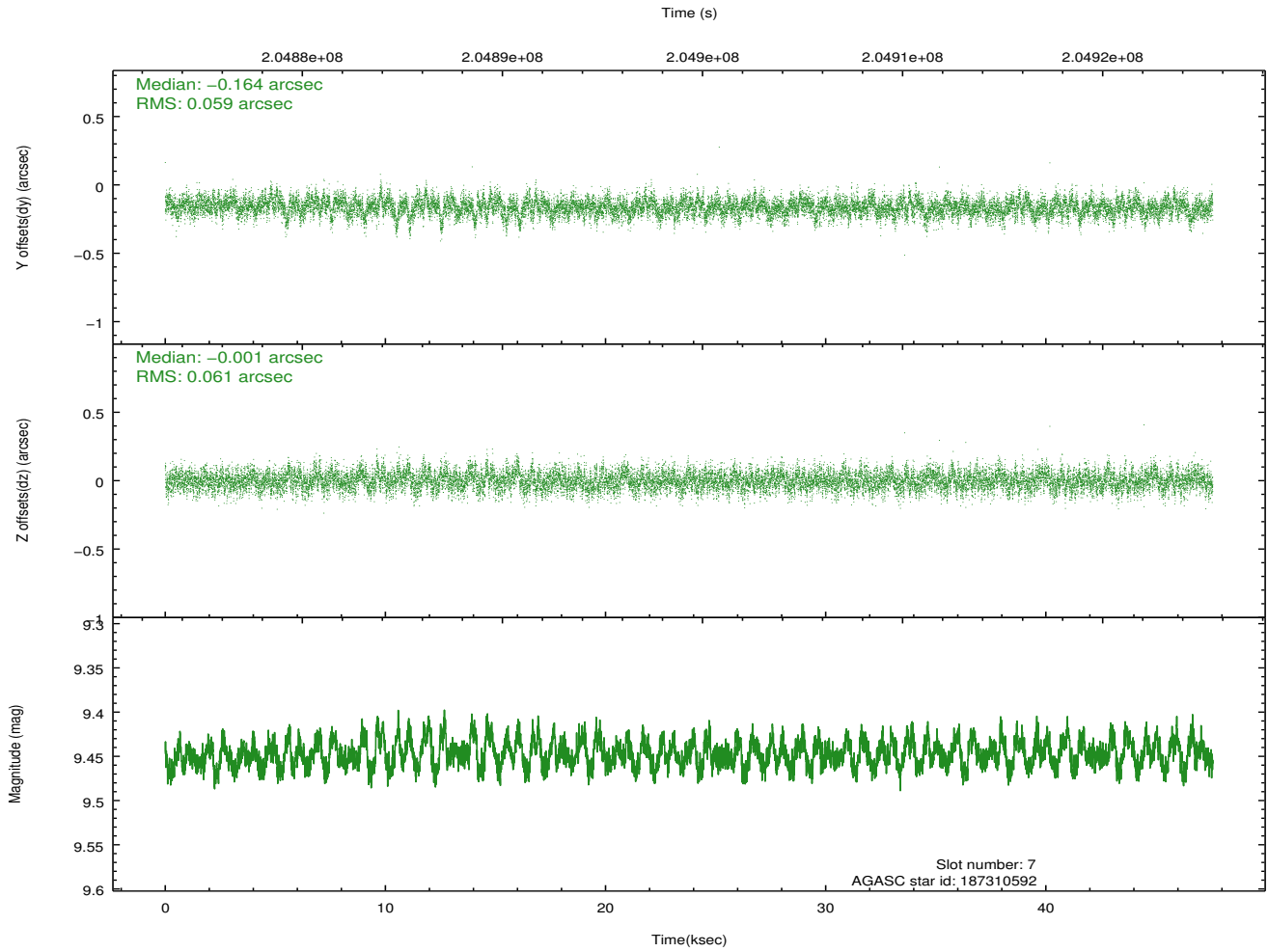
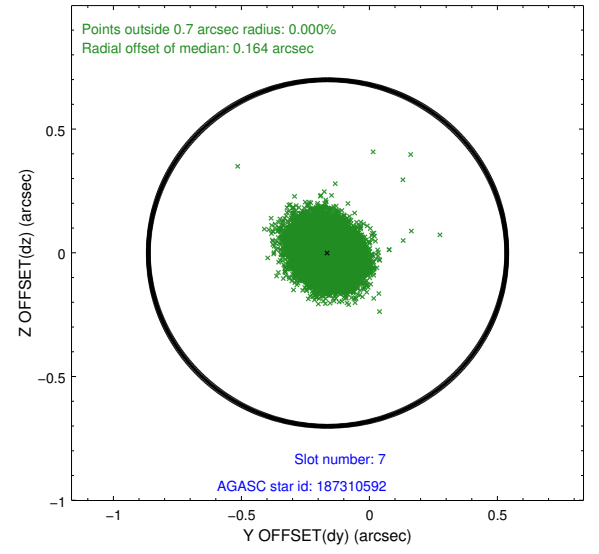
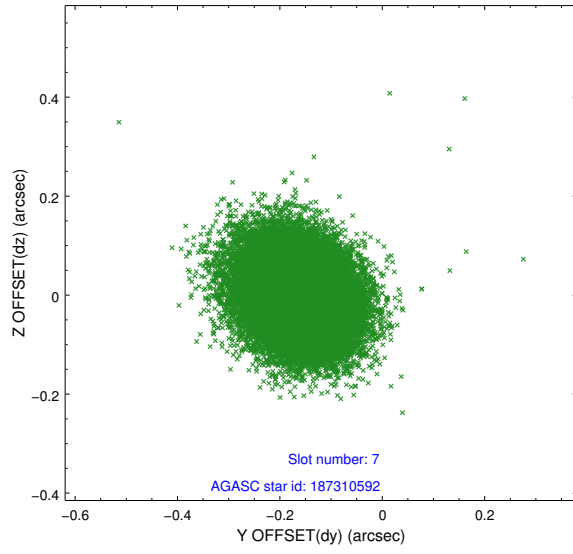
2.4.3 Slot 5



2.4.4 Slot 6

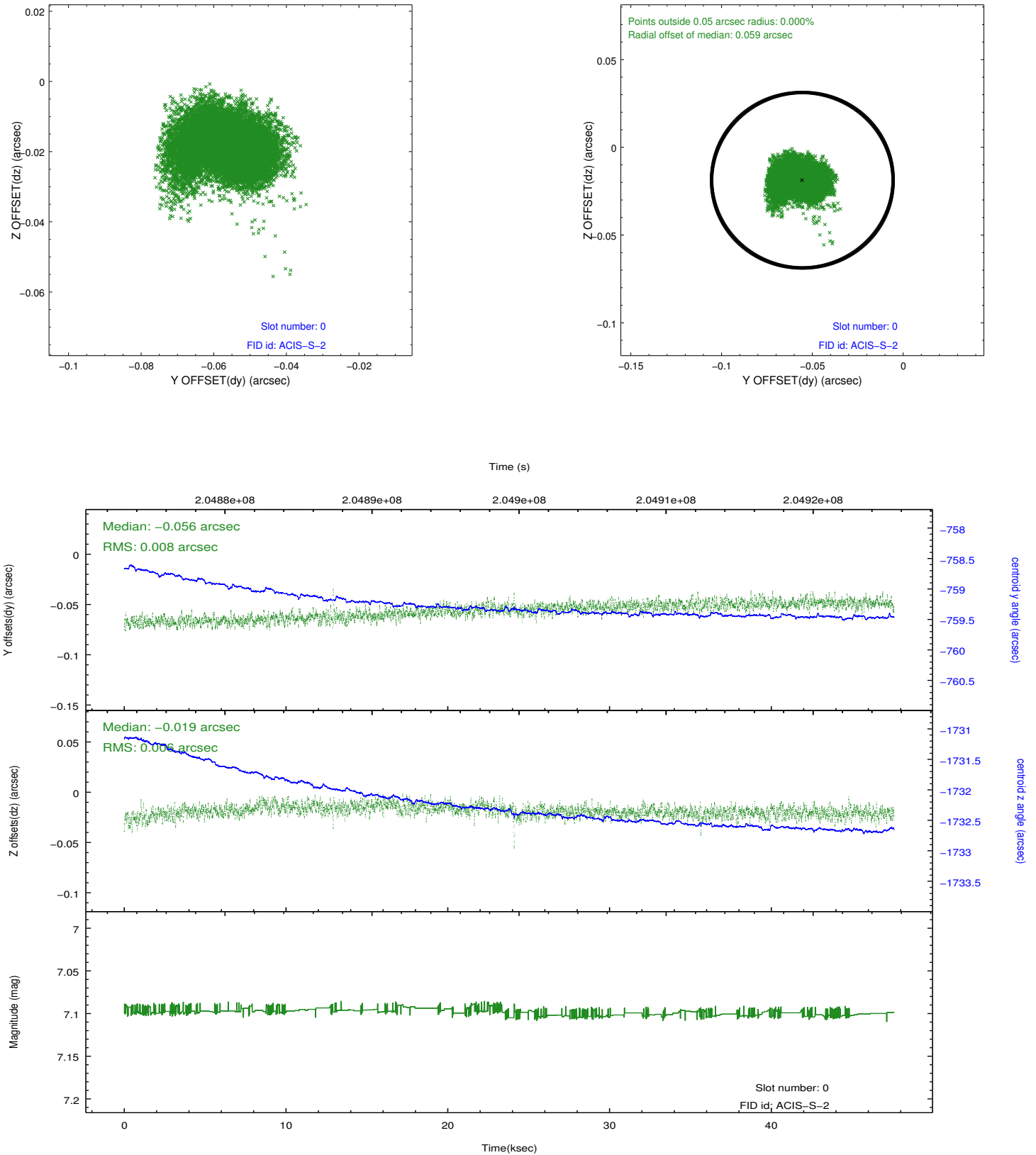


2.4.5 Slot 7

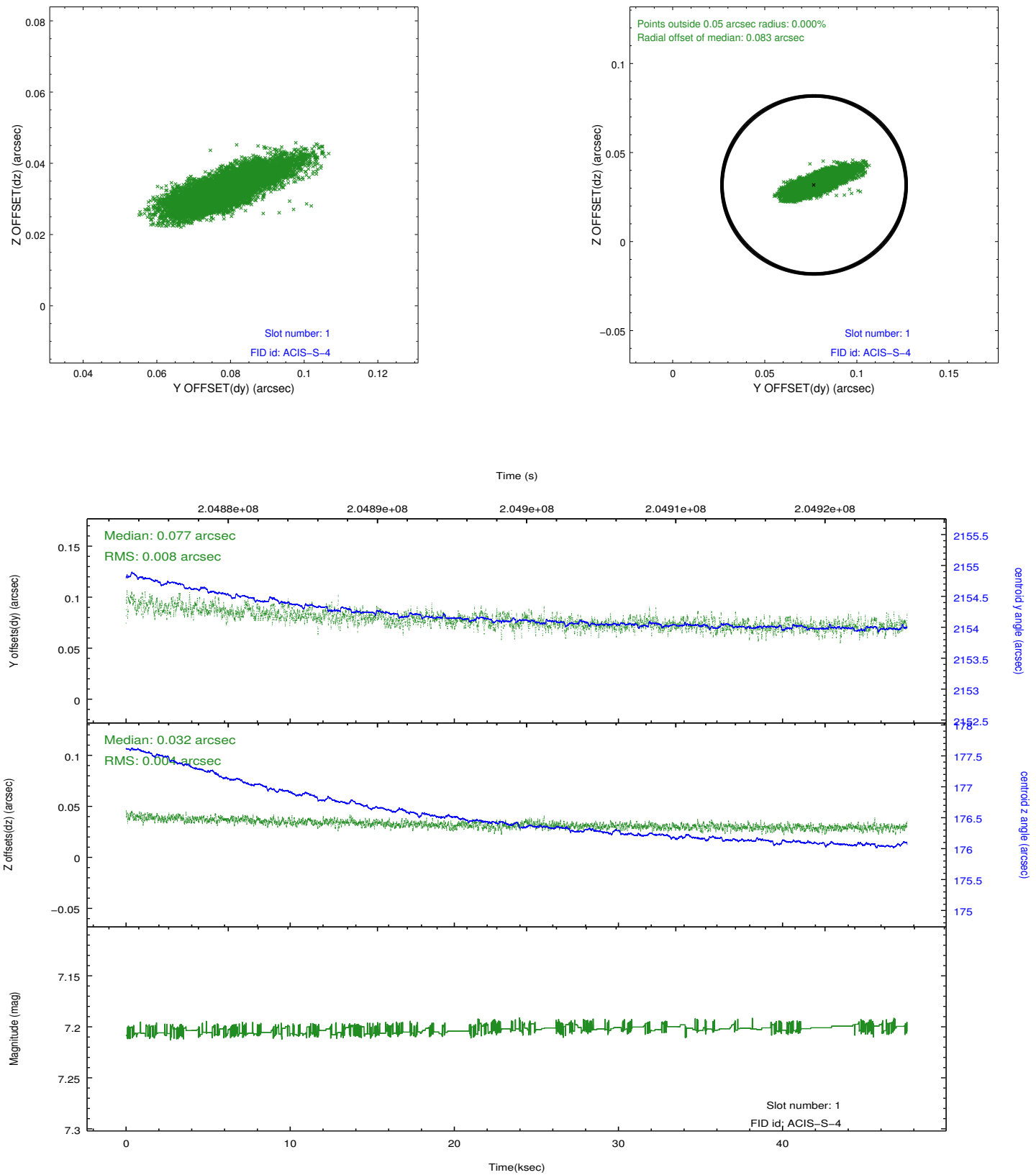


2.5 FID Slots

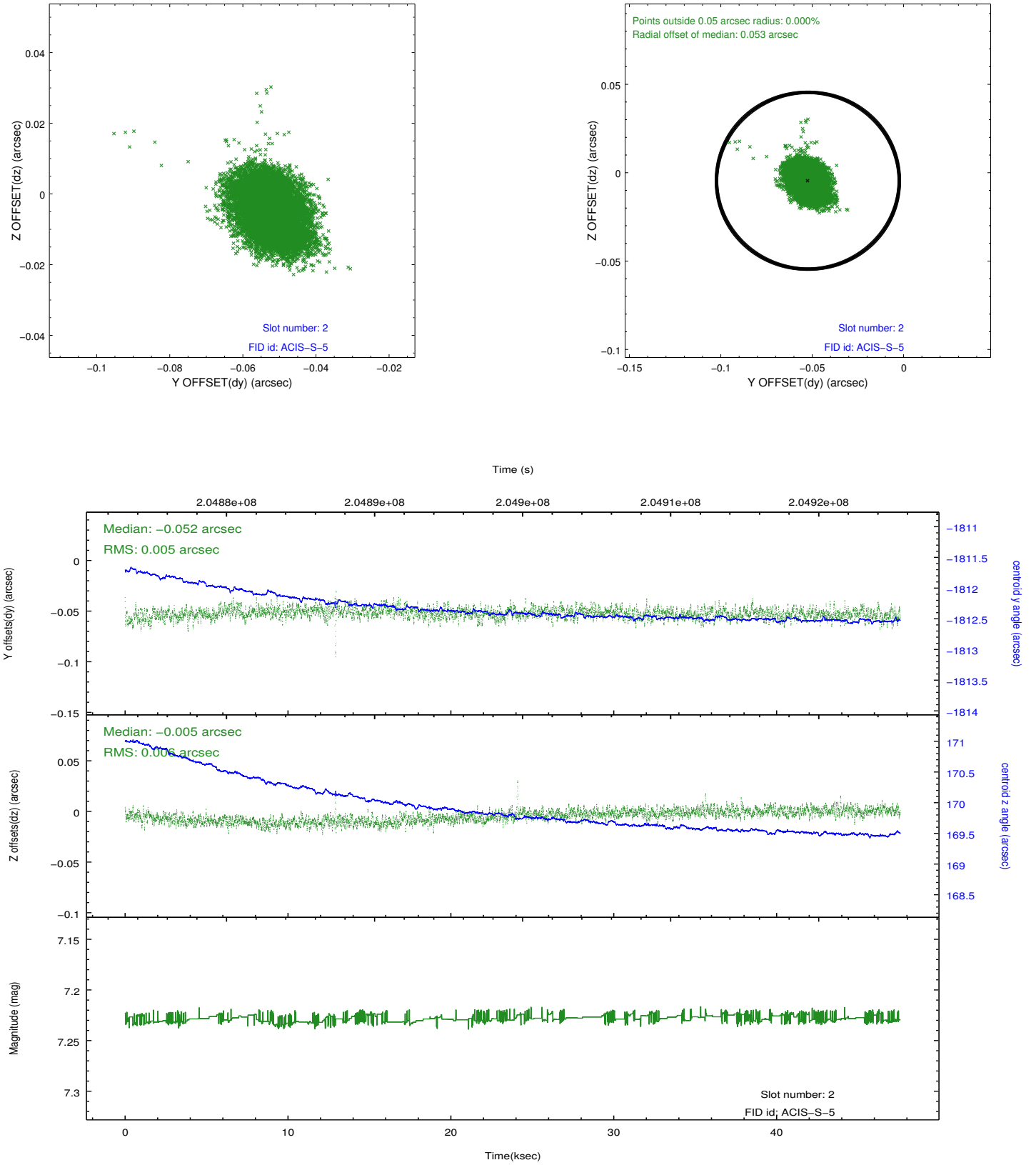
2.5.1 Slot 0



2.5.2 Slot 1



2.5.3 Slot 2



A Summary

A.1 Status

V&V Scientist	Jen Lauer
V&V Date (YYYY-MM-DD)	2013.02.19
V&V Edition	1
V&V Disposition and Status	OK
V&V Charge Time	47.833

A.2 Comments

Charge time for this ObsId remains at previous value of 47.833 ks although with the current processing the charge time would have been 47.48 ksec.

=====

This observation was interrupted by safing of the science instruments onboard Chandra due to an early entry into the rad zone. The observation was interrupted at 2004:181:19:05. Due to a high radiation environment, the instruments were safed and the observation terminated early. This observation has been reprocessed so that the aspect solution correctly handles the instrument safing and maneuver activities at the end of the observation.