

V&V Reference Report

L2 ASCDS Version : 8.5

Observation 4592 - L2 Version 3
Chandra X-Ray Center

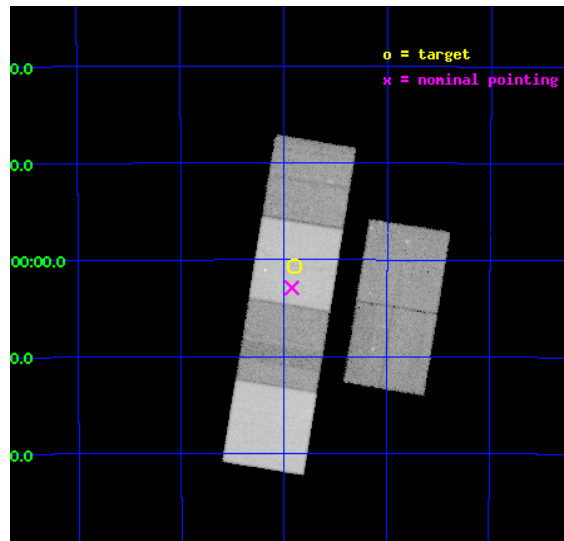
L2 Processing Date : Dec 6 2012

Contents

1	Front	2
2	OBI	3
2.1	OBI	3
2.1.1	Images	3
2.1.2	Bias	3
2.1.3	Parameters	4
2.1.4	Events	4
2.2	Compared Parameters	5
2.3	Aspect	6
2.4	Star Slots	9
2.4.1	Slot 3	9
2.4.2	Slot 4	10
2.4.3	Slot 5	11
2.4.4	Slot 6	12
2.4.5	Slot 7	13
2.5	FID Slots	14
2.5.1	Slot 0	14
2.5.2	Slot 1	15
2.5.3	Slot 2	16
A	Summary	17
A.1	Status	17
A.2	Comments	17

1 Front

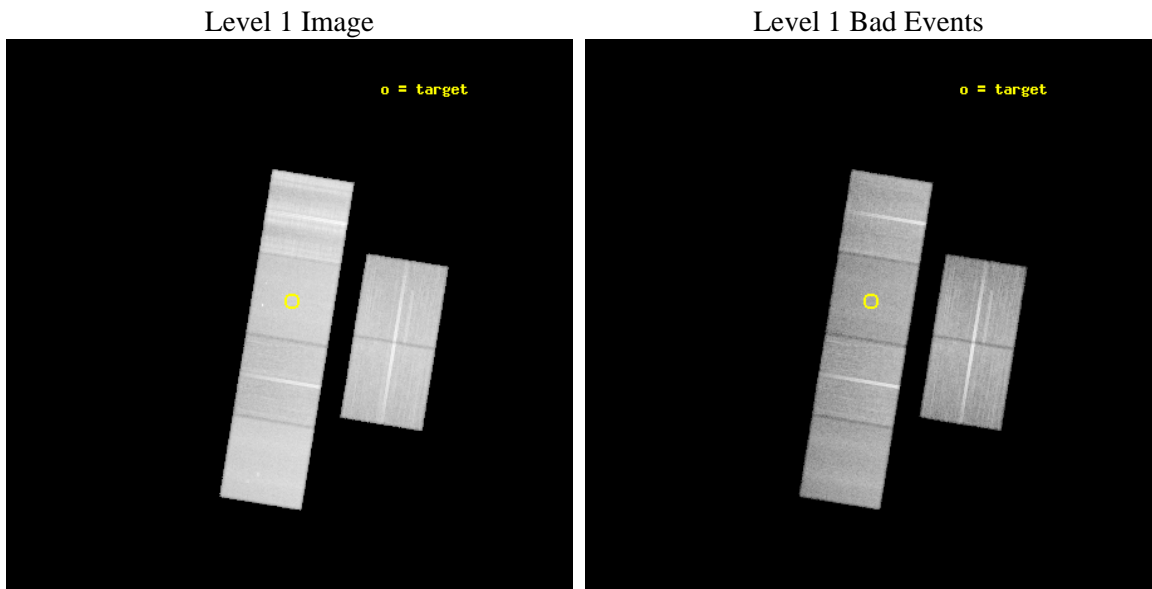
seq_num	500417	Sequence number
obs_id	4592	Observation id
title	A Chandra Search for Crab-like Supernova Remnants	Proposal title
observer	Dr. Stephen Murray	Principal investigator
object	G341.9-0.3	Source name
dtcycle	0	
cycle	P	events from which exps? Prim/Second/Both
ra_targ	253.725	Observer's specified target RA [deg]
dec_targ	-44.011111	Observer's specified target Dec [deg]
ra_nom	253.73095154349	Nominal RA [deg]
dec_nom	-44.04826773449	Nominal Dec [deg]
roll_nom	279.27698744514	Nominal Roll [deg]
revision	3	Processing version of data
ontime	41145.599846721	Sum of GTIs [s]
livetime	40624.589486556	Livetime [s]
ontime2	41139.117985725	Sum of GTIs [s]
ontime3	41142.358965993	Sum of GTIs [s]
ontime5	41145.599846721	Sum of GTIs [s]
ontime6	41142.358866453	Sum of GTIs [s]
ontime7	41145.599846721	Sum of GTIs [s]
ontime8	41142.358866423	Sum of GTIs [s]
l2events	520034	Number of level 2 events



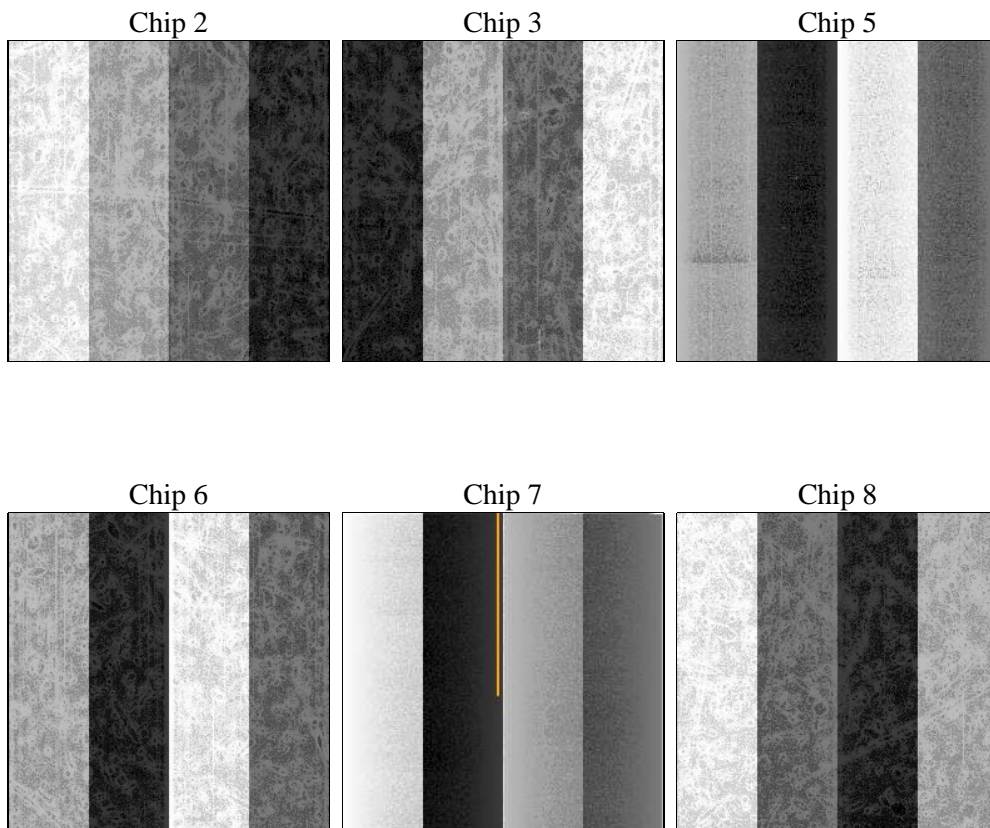
2 OBI

2.1 OBI

2.1.1 Images



2.1.2 Bias



2.1.3 Parameters

obi_num	4	Obi number	sched_exp_time	41000.000000	[s] Scheduled observation exposure time
ascdsver	8.5	Processing system revision	ontime	41145.599846721	Sum of GTIs [s]
caldsver	4.5.4	 	ontime2	41139.117985725	Sum of GTIs [s]
date	2012-12-06T23:17:43	Date and time of file creation	ontime3	41142.358965993	Sum of GTIs [s]
revision	3	Processing version of data	ontime5	41145.599846721	Sum of GTIs [s]
			ontime6	41142.358866453	Sum of GTIs [s]
			ontime7	41145.599846721	Sum of GTIs [s]
			ontime8	41142.358866423	Sum of GTIs [s]
			l1events	2376424	Number of level 1 events

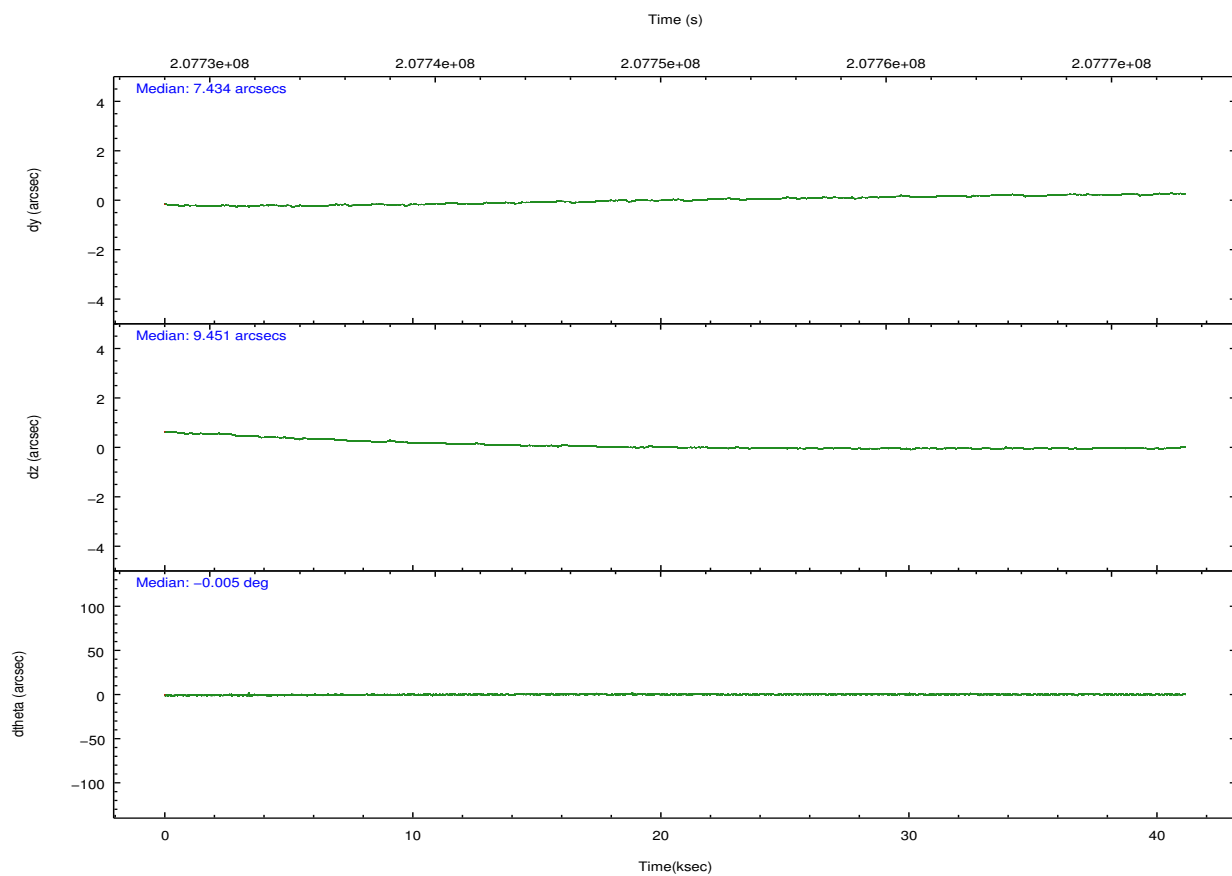
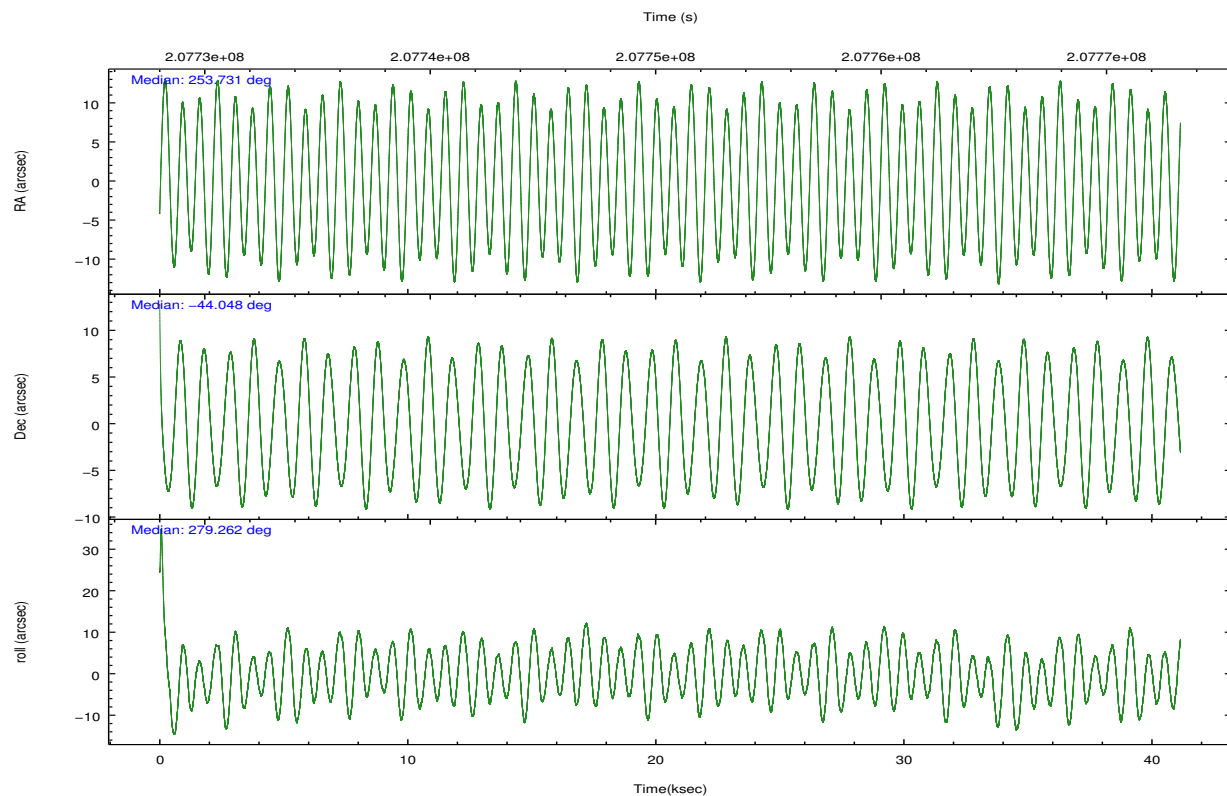
2.1.4 Events

	ccd 2	ccd 3	ccd 5	ccd 6	ccd 7	ccd 8		ccd 2	ccd 3	ccd 5	ccd 6	ccd 7	ccd 8
level 1 events	334335	315057	443174	331675	406529	545654	grade 0 events	23101	19918	14571	20692	16995	83015
rejected events	285576	268937	251017	283085	237907	322946		6%	6%	3%	6%	4%	15%
rejected %	85%	85%	56%	85%	58%	59%	grade 1 events	232	180	666	202	436	749
								0%	0%	0%	0%	0%	0%
							grade 2 events	10809	11238	60380	12530	35470	31962
								3%	3%	13%	3%	8%	5%
							grade 3 events	3387	3518	8983	3706	15608	38378
								1%	1%	2%	1%	3%	7%
							grade 4 events	4091	3496	8710	3449	15508	35275
								1%	1%	1%	1%	3%	6%
							grade 5 events	11583	12805	32485	13362	38313	19185
								3%	4%	7%	4%	9%	3%
							grade 6 events	8710	9262	105159	9489	89604	39905
								2%	2%	23%	2%	22%	7%
							grade 7 events	272422	254640	212220	268245	194595	297185
								81%	80%	47%	80%	47%	54%

2.2 Compared Parameters

Parameter	Planned	Actual	Parameter	Planned	Actual
Instrument	ACIS	ACIS	Obspar format version number	7	7
Detector	ACIS-235678	ACIS-235678	Obspar file type	PREDICTED	ACTUAL
Grating	NONE	NONE	Obspar update status	NONE	UPDATED
Data mode	VFAINT	VFAINT	Number of optional ACIS chips dropped	0	0
Observation mode	POINTING	POINTING	On-chip summing requested	N	N
[deg] Pointing RA	253.706577	253.7309515434938	Subarray requested	NONE	NONE
[deg] Pointing Dec	-44.027415	-44.0482677344902	Alternating exposures requested	N	N
[deg] Pointing Roll	279.103415	279.2769874451391	[s] Primary exposure time	0.000000	3.2
[mm] SIM focus pos	-0.684267	-0.6828225247311905			
[mm] SIM defocus	0	0.001444936568705701			
[mm] SIM translation stage pos	-190.132523	-190.1400660498719			
[mm] SIM translation stage offset	0	0.00754346686406393			
[s] Observation start time (MET)	207730215.184000	207728604.59639			
Observation start date	2004-08-01T06:49:11	2004-08-01T06:23:24			
[s] Observation end time (MET)	207771215.184000	207772716.49835			
Observation end date	2004-08-01T18:12:31	2004-08-01T18:38:36			
Read mode	TIMED	TIMED			

2.3 Aspect

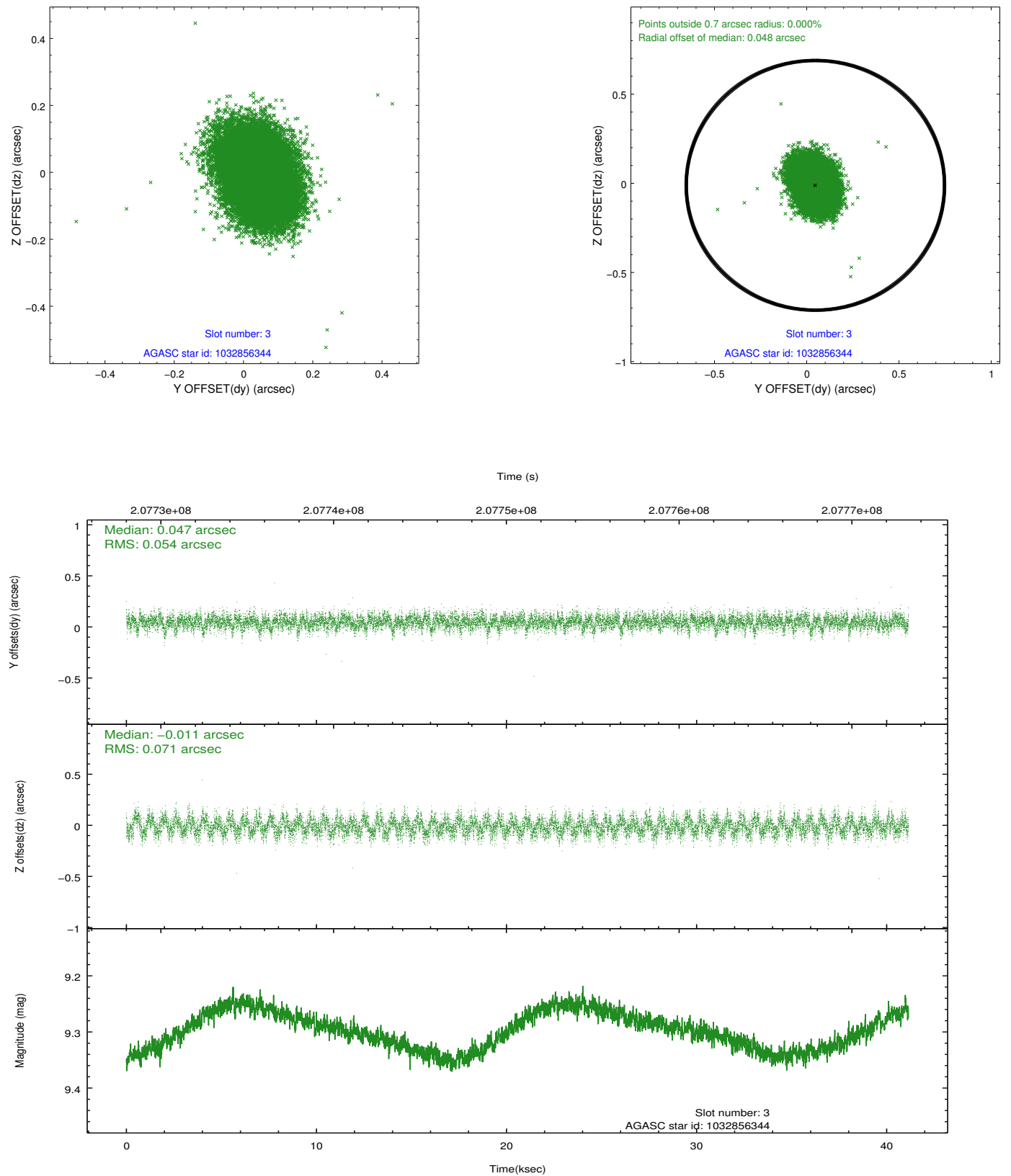


Slot Statistics

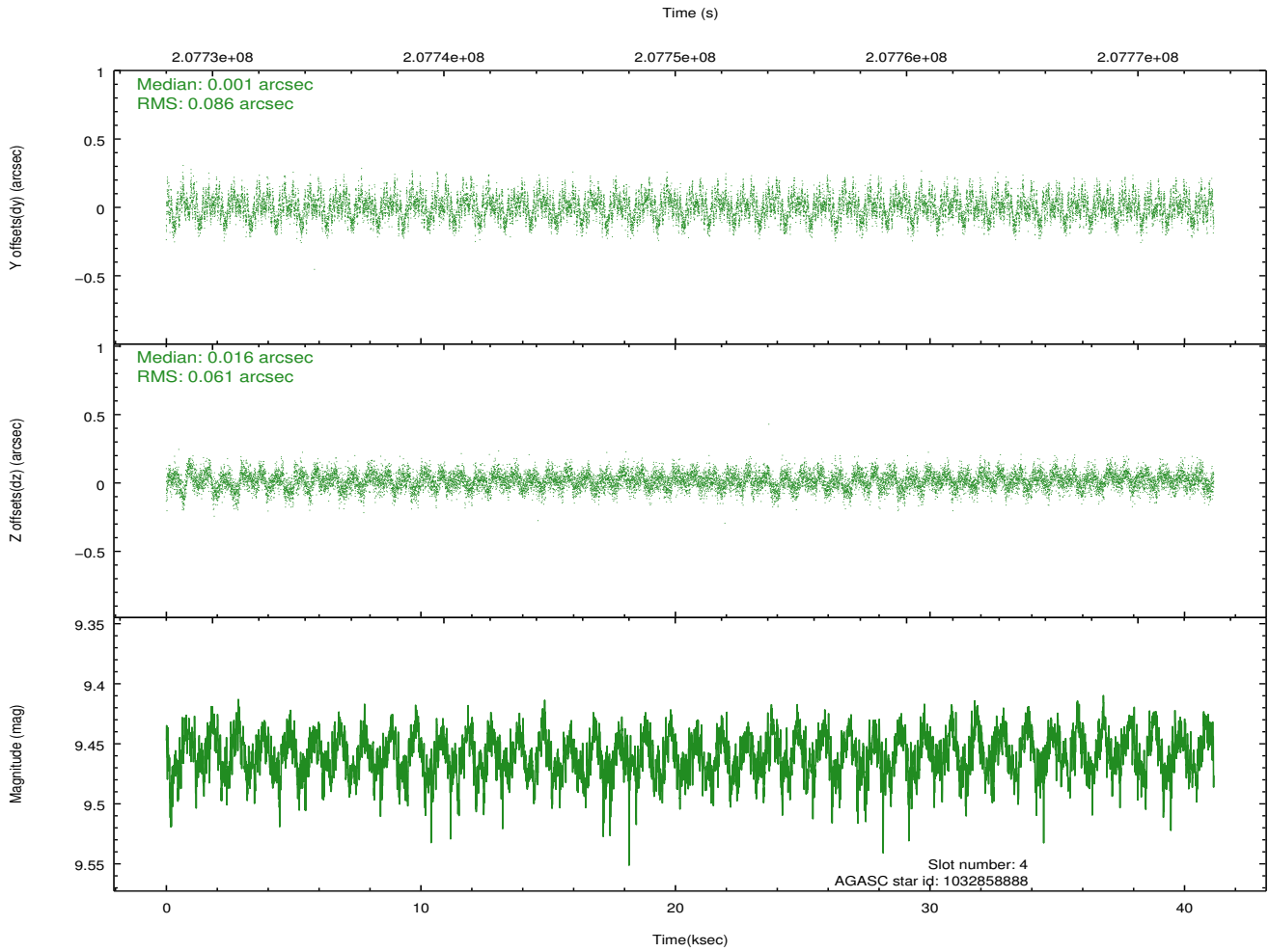
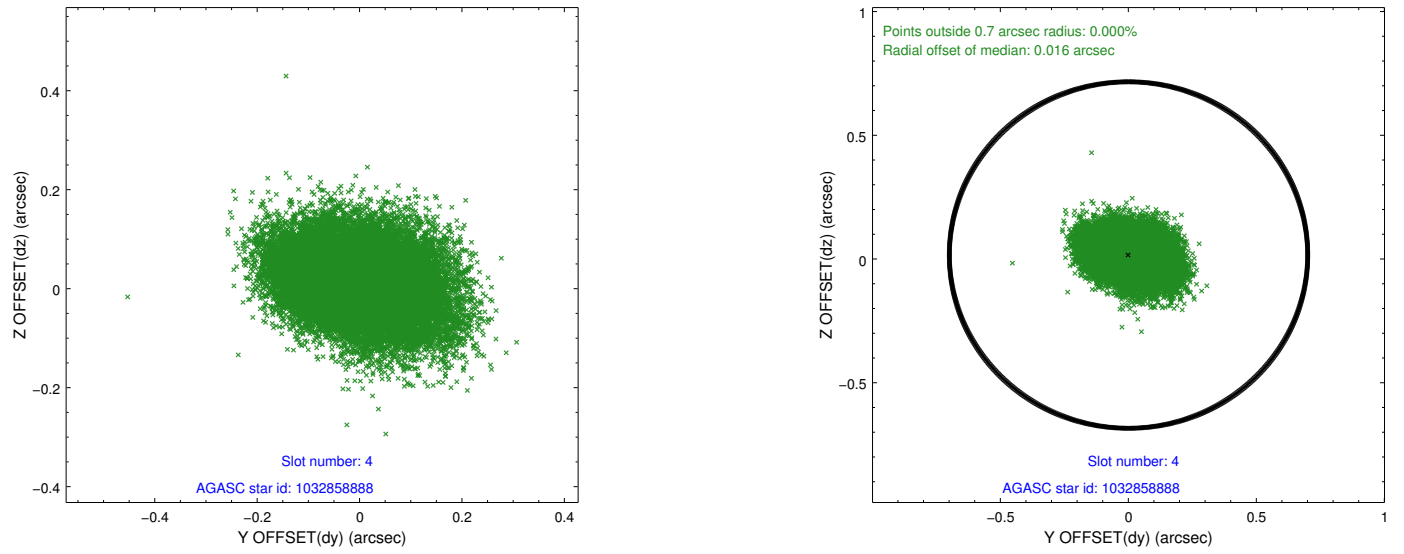
slot	status	id	mag	n_pts	med_dy	med_dz	dr1	dr2	ra	dec	mean_y	mean_z
0	FID	ACIS-S-1	7.19	10037	0.023	-0.021	0.013	0.022	0.000000	0.000000	935.86	-1726.43
1	FID	ACIS-S-4	7.20	10035	0.064	0.008	0.010	0.017	0.000000	0.000000	2153.30	177.75
2	FID	ACIS-S-5	7.23	10038	-0.114	0.026	0.014	0.023	0.000000	0.000000	-1813.14	171.35
3	GUIDE	1032856344	9.30	20065	0.047	-0.011	0.095	0.154	253.308302	-43.749430	-1149.10	-864.53
4	GUIDE	1032858888	9.46	20058	0.001	0.016	0.114	0.183	254.468617	-43.462180	-1685.57	2286.68
5	GUIDE	1032860872	9.40	20064	0.011	0.082	0.086	0.138	253.486994	-43.583026	-1669.30	-312.13
6	GUIDE	1032862008	9.01	20069	0.019	0.035	0.086	0.138	253.528180	-43.764940	-1005.69	-308.26
7	GUIDE	1032867928	8.34	20072	-0.074	-0.120	0.064	0.105	253.057857	-43.542782	-1983.56	-1396.79

2.4 Star Slots

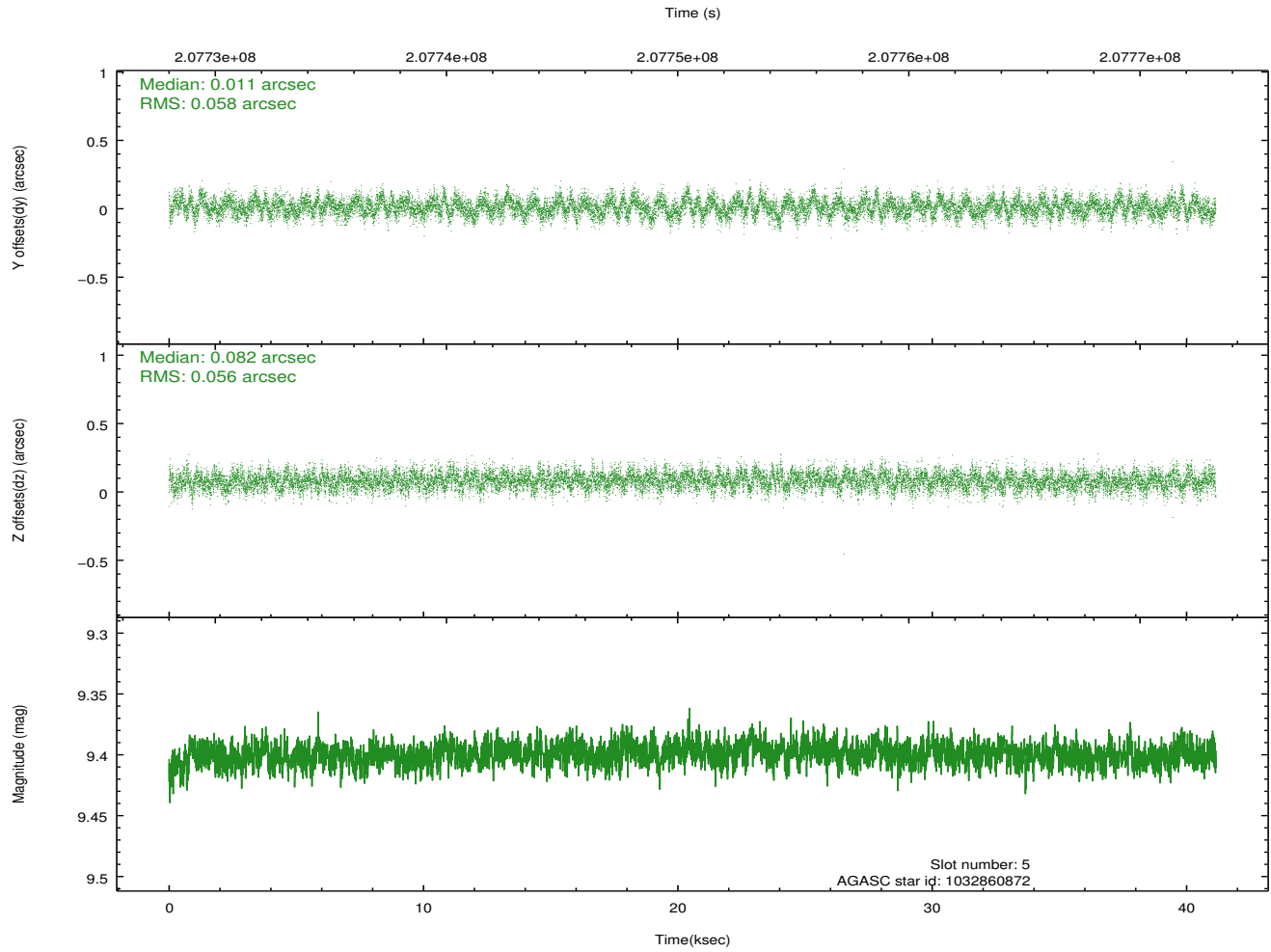
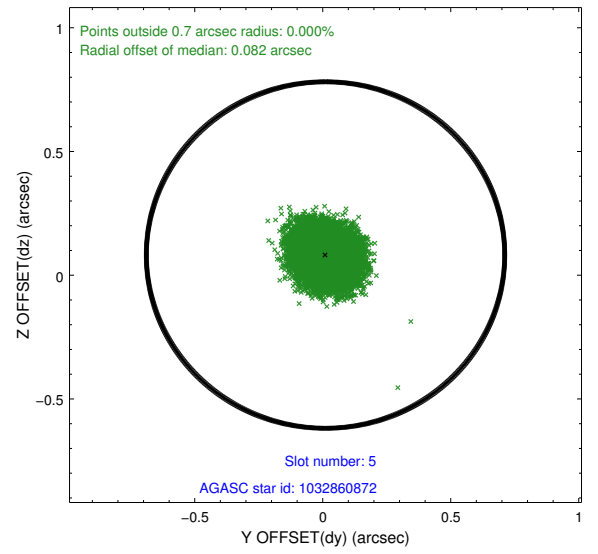
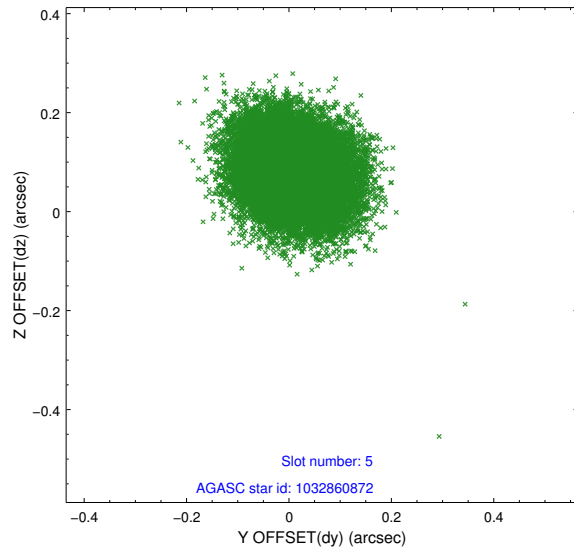
2.4.1 Slot 3



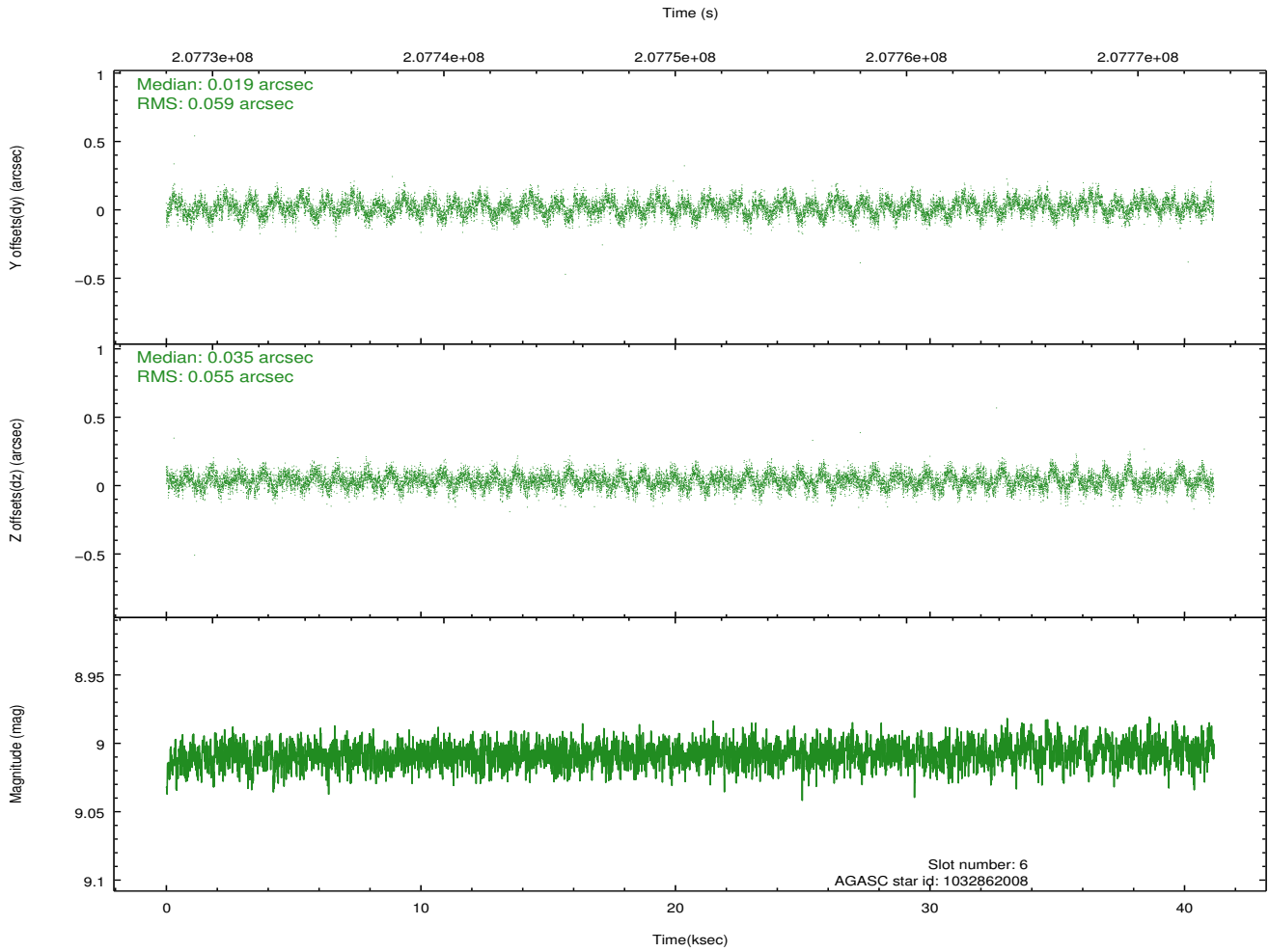
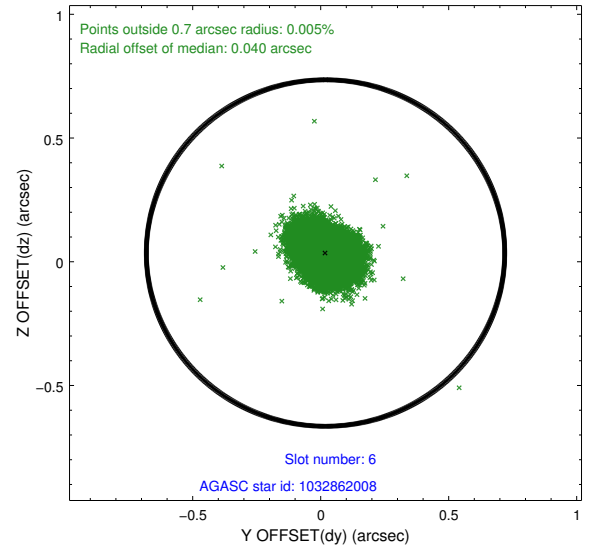
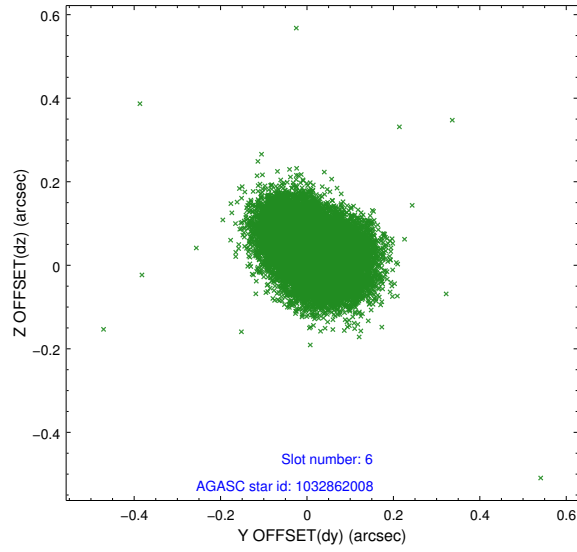
2.4.2 Slot 4



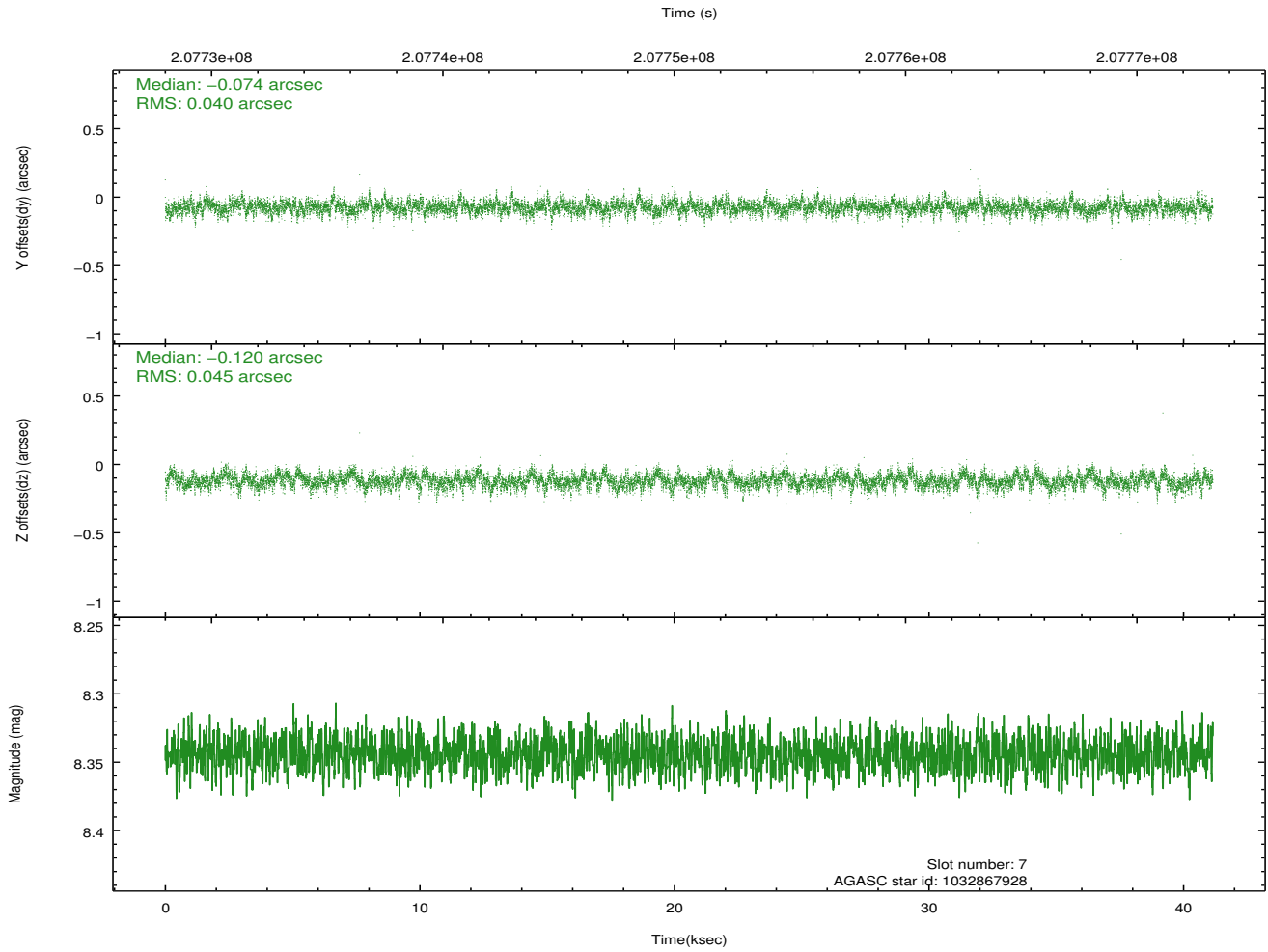
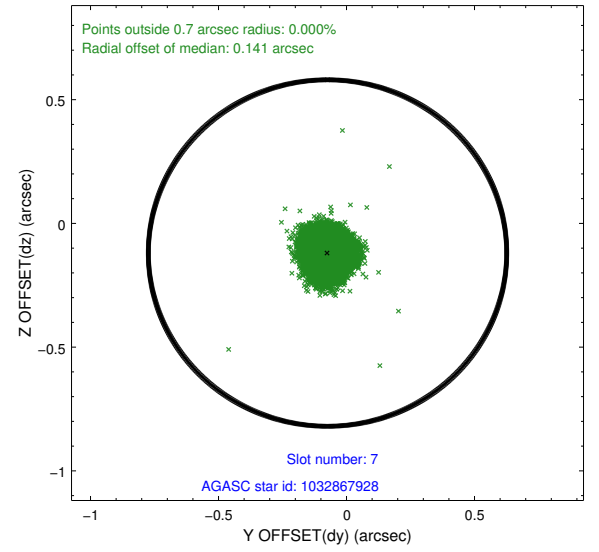
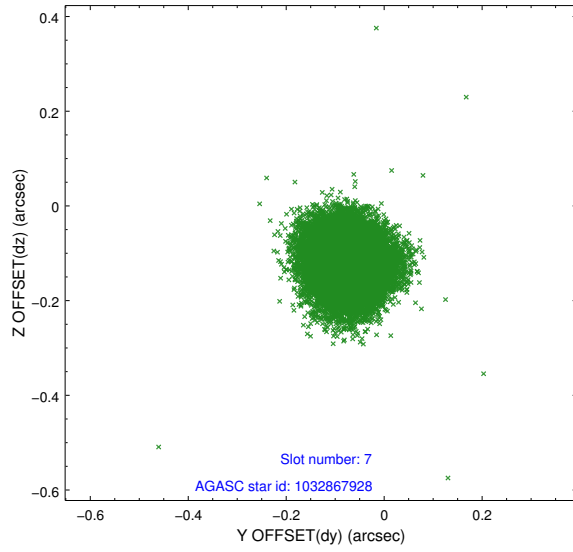
2.4.3 Slot 5



2.4.4 Slot 6

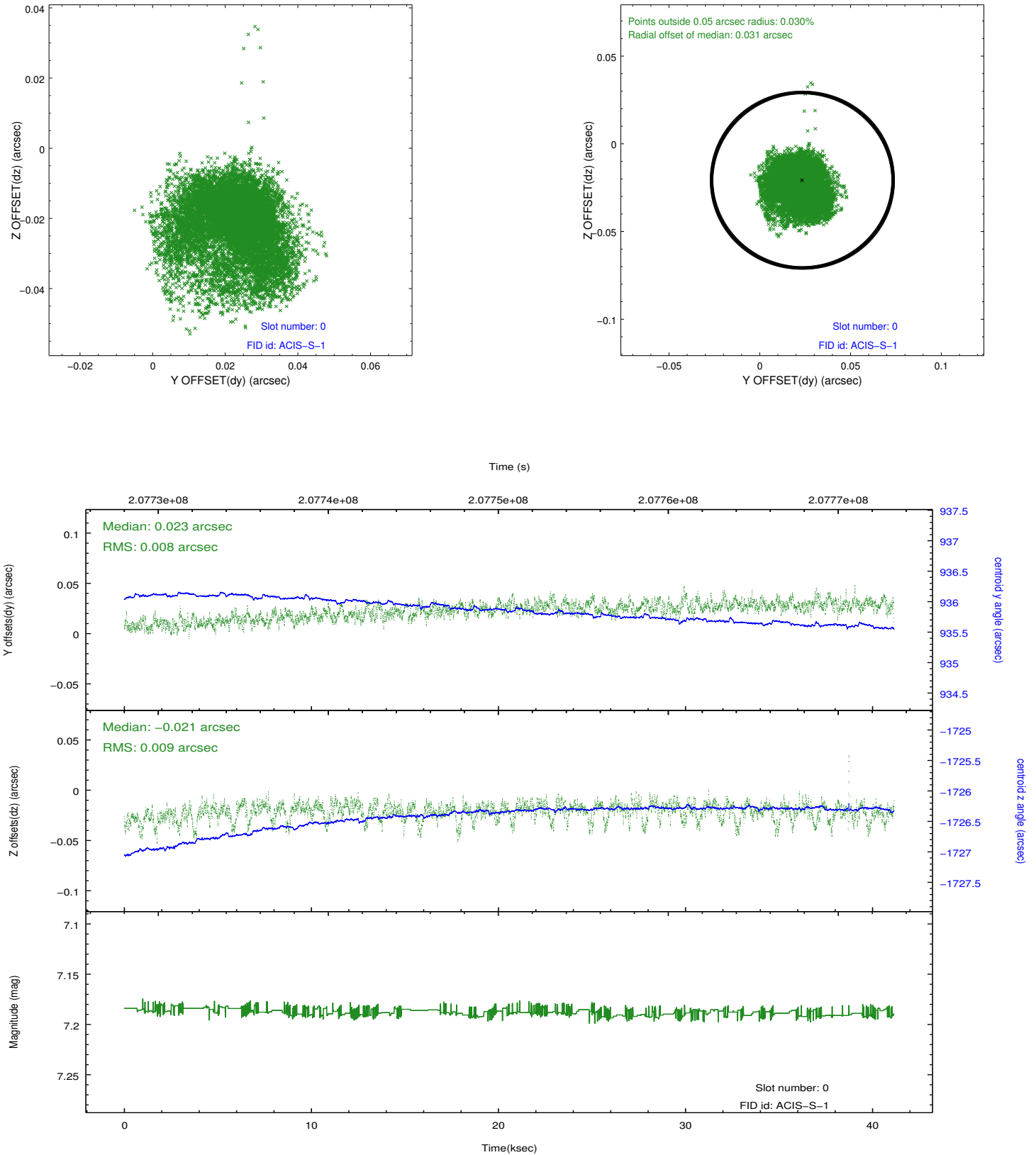


2.4.5 Slot 7

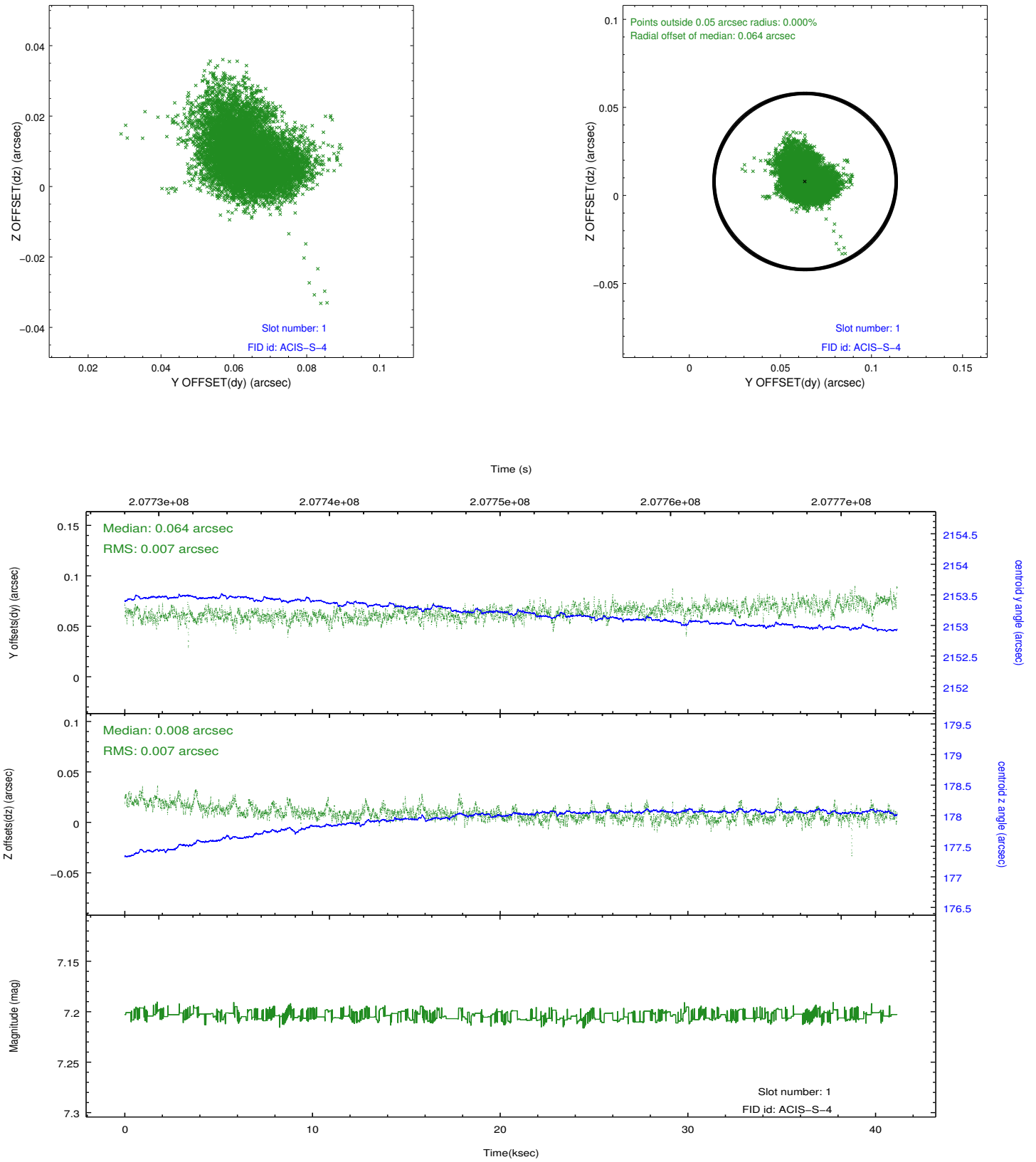


2.5 FID Slots

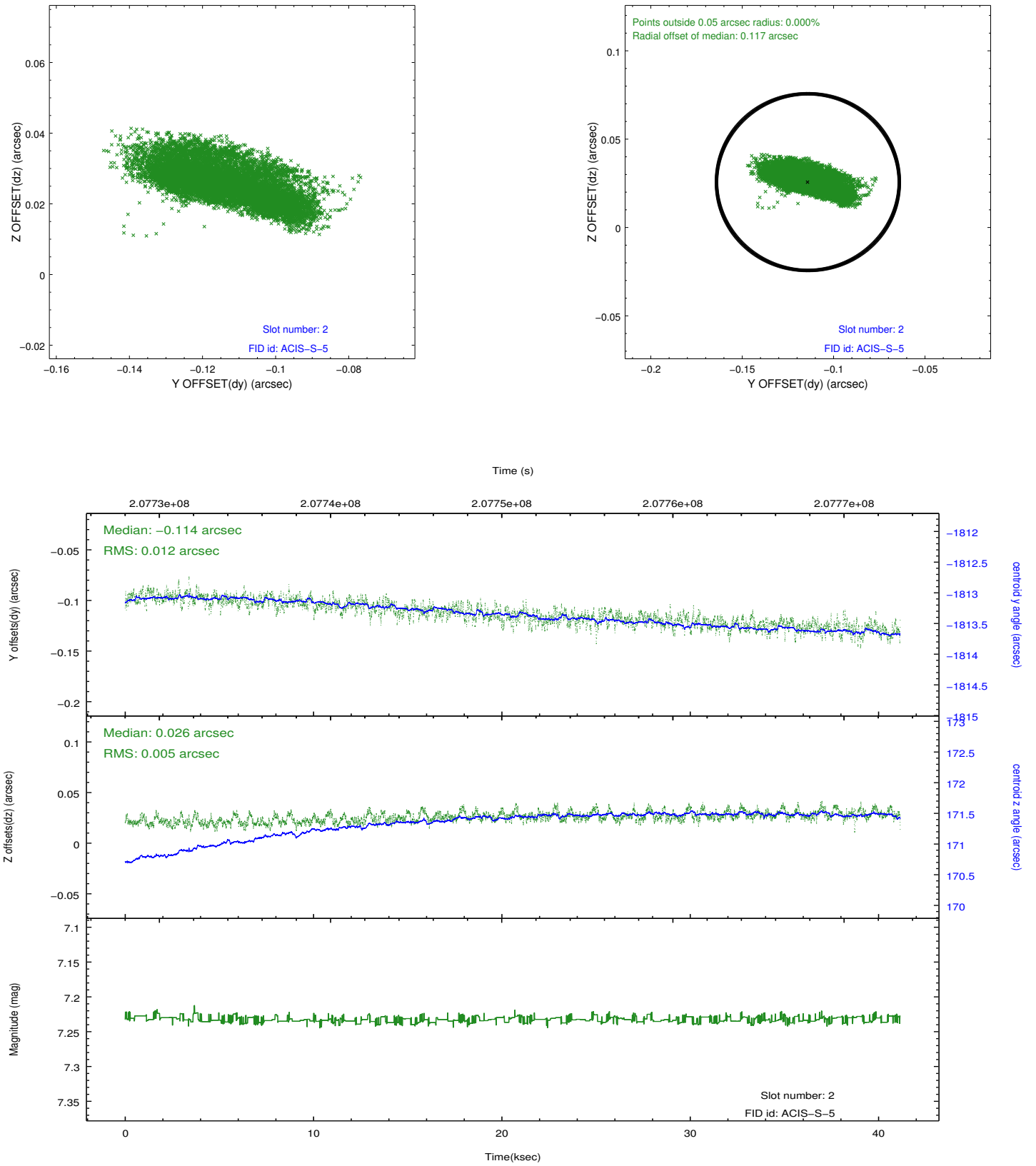
2.5.1 Slot 0



2.5.2 Slot 1



2.5.3 Slot 2



A Summary

A.1 Status

V&V Scientist	Beth Sundheim
V&V Date (YYYY-MM-DD)	2012.12.20
V&V Edition	1
V&V Disposition and Status	OK
V&V Charge Time	41.145

A.2 Comments