

V&V Reference Report

L2 ASCDS Version : 8.4.5

Observation 4542 - L2 Version 3
Chandra X-Ray Center

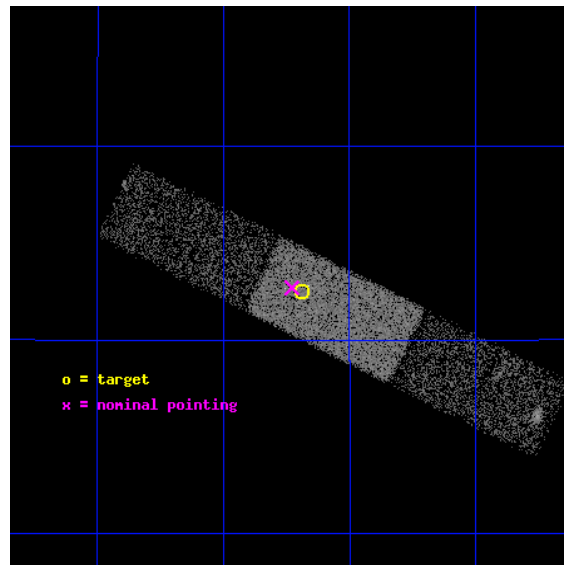
L2 Processing Date : Nov 7 2012

Contents

1	Front	2
2	OBI	3
2.1	OBI	3
2.1.1	Images	3
2.1.2	Bias	3
2.1.3	Parameters	4
2.1.4	Events	4
2.2	Compared Parameters	5
2.3	Aspect	6
2.4	Star Slots	9
2.4.1	Slot 3	9
2.4.2	Slot 4	10
2.4.3	Slot 5	11
2.4.4	Slot 6	12
2.4.5	Slot 7	13
2.5	FID Slots	14
2.5.1	Slot 0	14
2.5.2	Slot 1	15
2.5.3	Slot 2	16
A	Summary	17
A.1	Status	17
A.2	Comments	17

1 Front

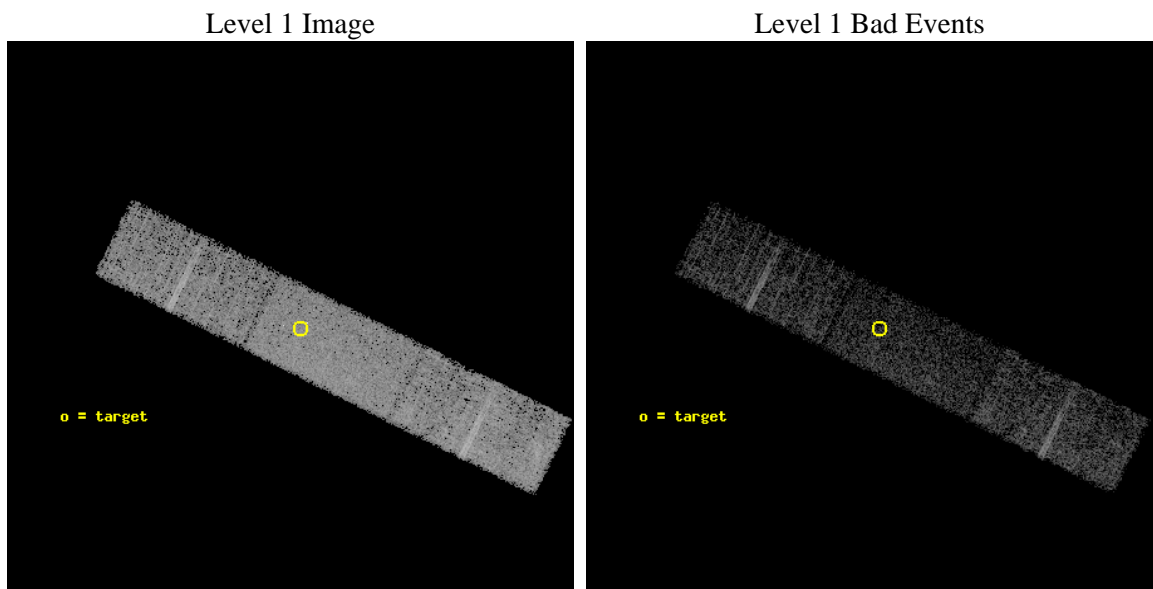
seq_num	300136	Sequence number
obs_id	4542	Observation id
title	The Supersoft Source 1E1339.8+2837 and Globular Cluster M3	Proposa
observer	Professor Johnathan Grindlay	Principal investigator
object	M3	Source name
dtcycle	0	
cycle	P	events from which exps? Prim/Second/Both
ra_targ	205.546667	Observer's specified target RA [deg]
dec_targ	28.375556	Observer's specified target Dec [deg]
ra_nom	205.55718039204	Nominal RA [deg]
dec_nom	28.378273262169	Nominal Dec [deg]
roll_nom	26.37325551969	Nominal Roll [deg]
revision	3	Processing version of data
ontime	10187.19996202	Sum of GTIs [s]
livetime	9932.4330541802	Livetime [s]
ontime6	10187.19996202	Sum of GTIs [s]
ontime7	10187.19996202	Sum of GTIs [s]
ontime8	10187.19996202	Sum of GTIs [s]
l2events	25736	Number of level 2 events



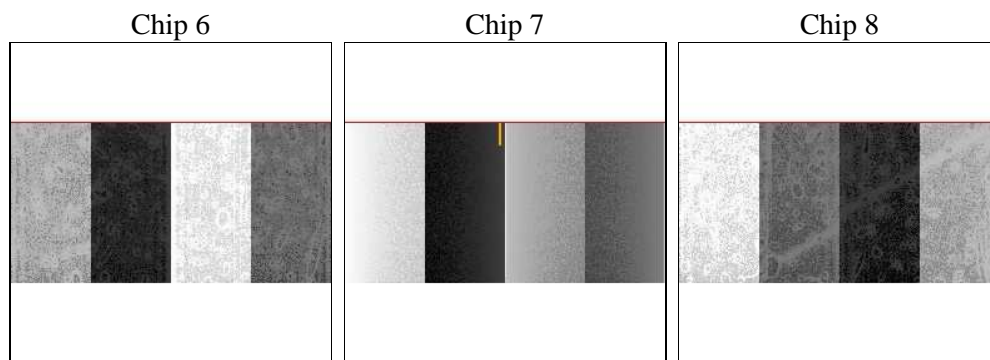
2 OBI

2.1 OBI

2.1.1 Images



2.1.2 Bias



2.1.3 Parameters

obi_num	0	Obi number	sched_exp_time	10000.000000	[s] Scheduled observation exposure time
ascdsver	8.4.5	Processing system revision	ontime	10187.19996202	Sum of GTIs [s]
caldsver	4.5.2	 	ontime6	10187.19996202	Sum of GTIs [s]
date	2012-11-07T12:47:48	Date and time of file creation	ontime7	10187.19996202	Sum of GTIs [s]
revision	3	Processing version of data	ontime8	10187.19996202	Sum of GTIs [s]
			l1events	121775	Number of level 1 events

2.1.4 Events

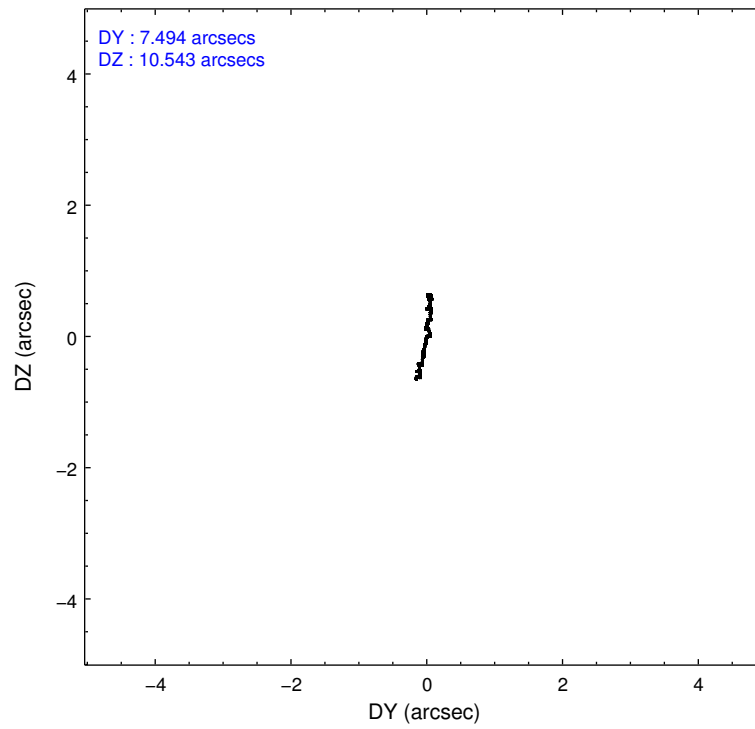
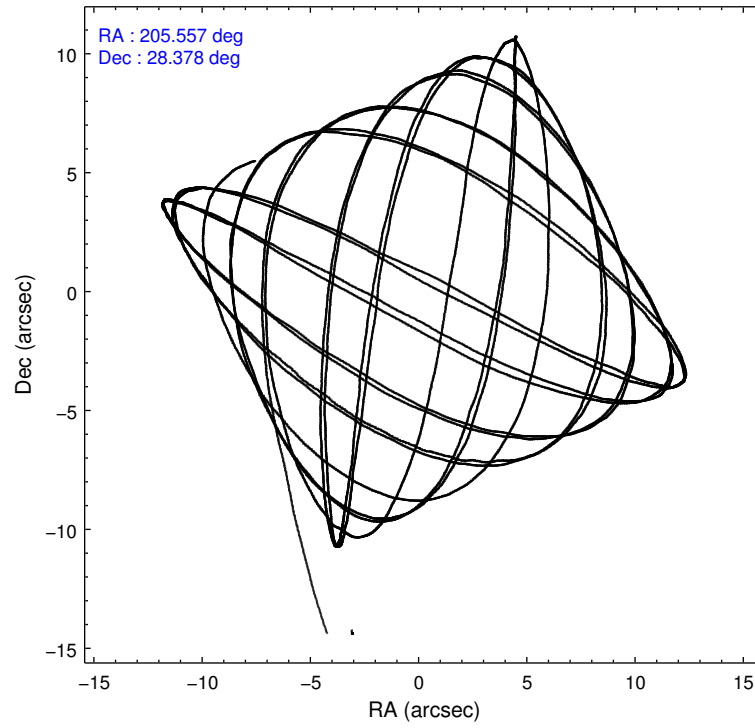
	ccd 6	ccd 7	ccd 8
level 1 events	33589	43569	44617
rejected events	29373	25179	35177
rejected %	87%	57%	78%

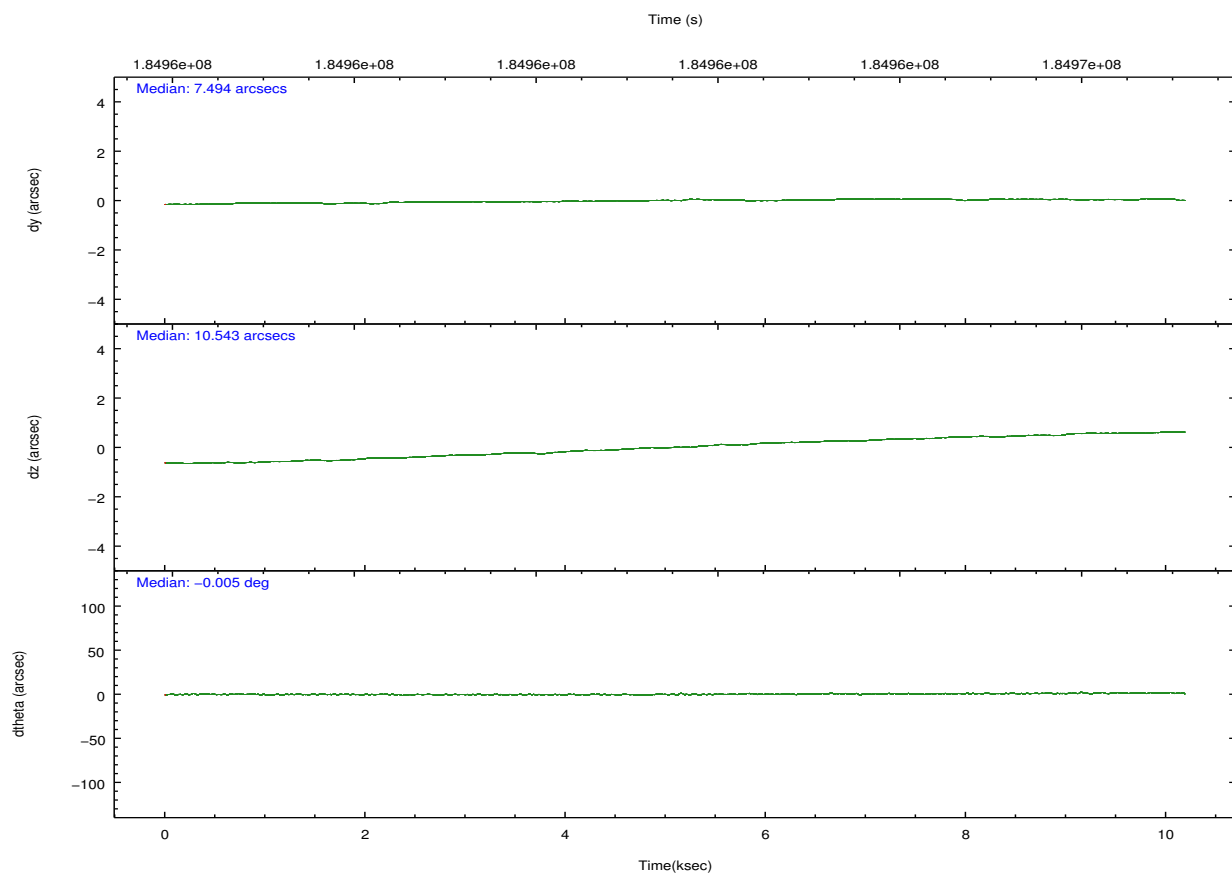
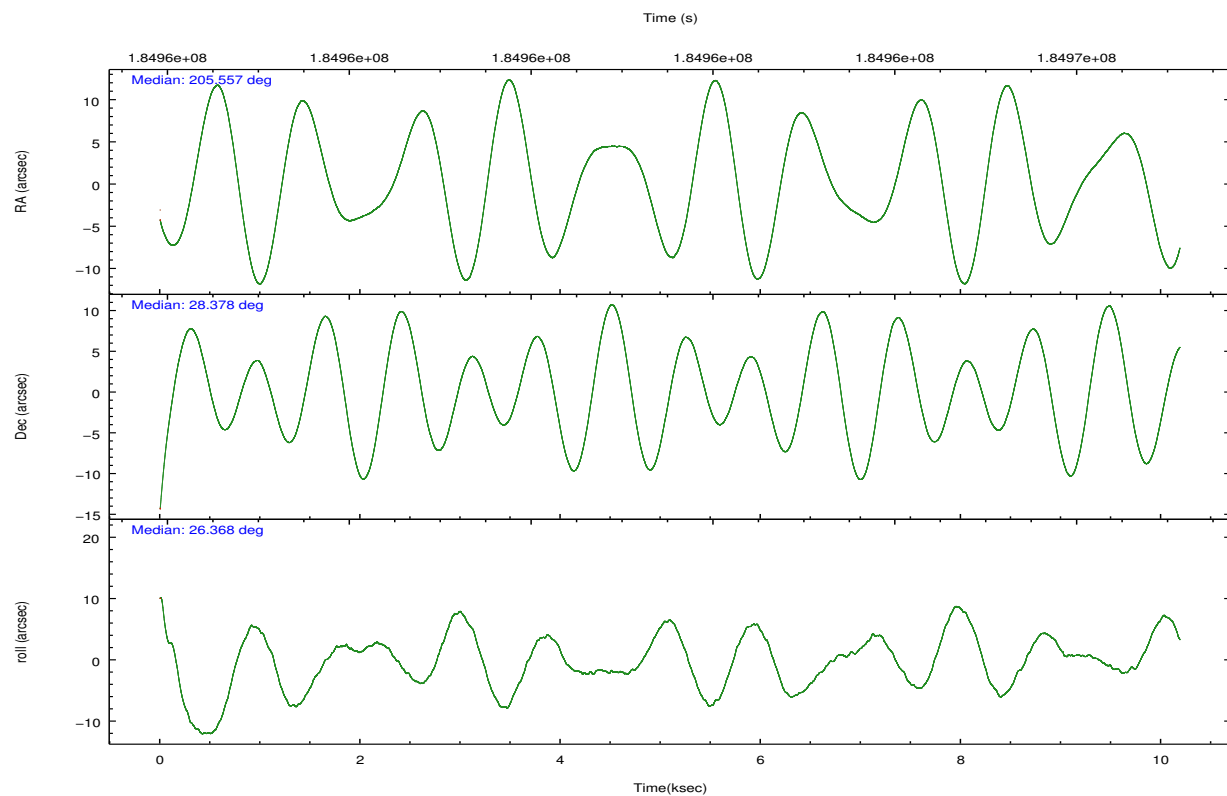
	ccd 6	ccd 7	ccd 8
grade 0 events	1735	1994	3270
	5%	4%	7%
grade 1 events	15	52	15
	0%	0%	0%
grade 2 events	809	3875	1960
	2%	8%	4%
grade 3 events	514	1836	1047
	1%	4%	2%
grade 4 events	477	1897	1069
	1%	4%	2%
grade 5 events	1391	4001	1869
	4%	9%	4%
grade 6 events	859	9589	2406
	2%	22%	5%
grade 7 events	27789	20325	32981
	82%	46%	73%

2.2 Compared Parameters

Parameter	Planned	Actual	Parameter	Planned	Actual
Instrument	ACIS	ACIS	Obspar format version number	7	7
Detector	ACIS-678	ACIS-678	Obspar file type	PREDICTED	ACTUAL
Grating	NONE	NONE	Obspar update status	NONE	UPDATED
Data mode	VFAINT	VFAINT	Number of optional ACIS chips dropped	0	0
Observation mode	POINTING	POINTING	On-chip summing requested	N	N
[deg] Pointing RA	205.540431	205.5571803920404	Subarray requested	CUSTOM	1/2
[deg] Pointing Dec	28.355385	28.37827326216872	Subarray start row	257	257
[deg] Pointing Roll	26.224574	26.37325551969014	Subarray row count	512	512
[mm] SIM focus pos	-0.684267	-0.6828225247311905	Alternating exposures requested	N	N
[mm] SIM defocus	0	0.001444936568705701	[s] Primary exposure time	0.000000	1.6
[mm] SIM translation stage pos	-190.132523	-190.1400660498719			
[mm] SIM translation stage offset	0	0.00754346686406393			
[s] Observation start time (MET)	184956626.184000	184955661.99682			
Observation start date	2003-11-11T16:49:22	2003-11-11T16:34:21			
[s] Observation end time (MET)	184966626.184000	184967166.08482			
Observation end date	2003-11-11T19:36:02	2003-11-11T19:46:06			
Read mode	TIMED	TIMED			

2.3 Aspect



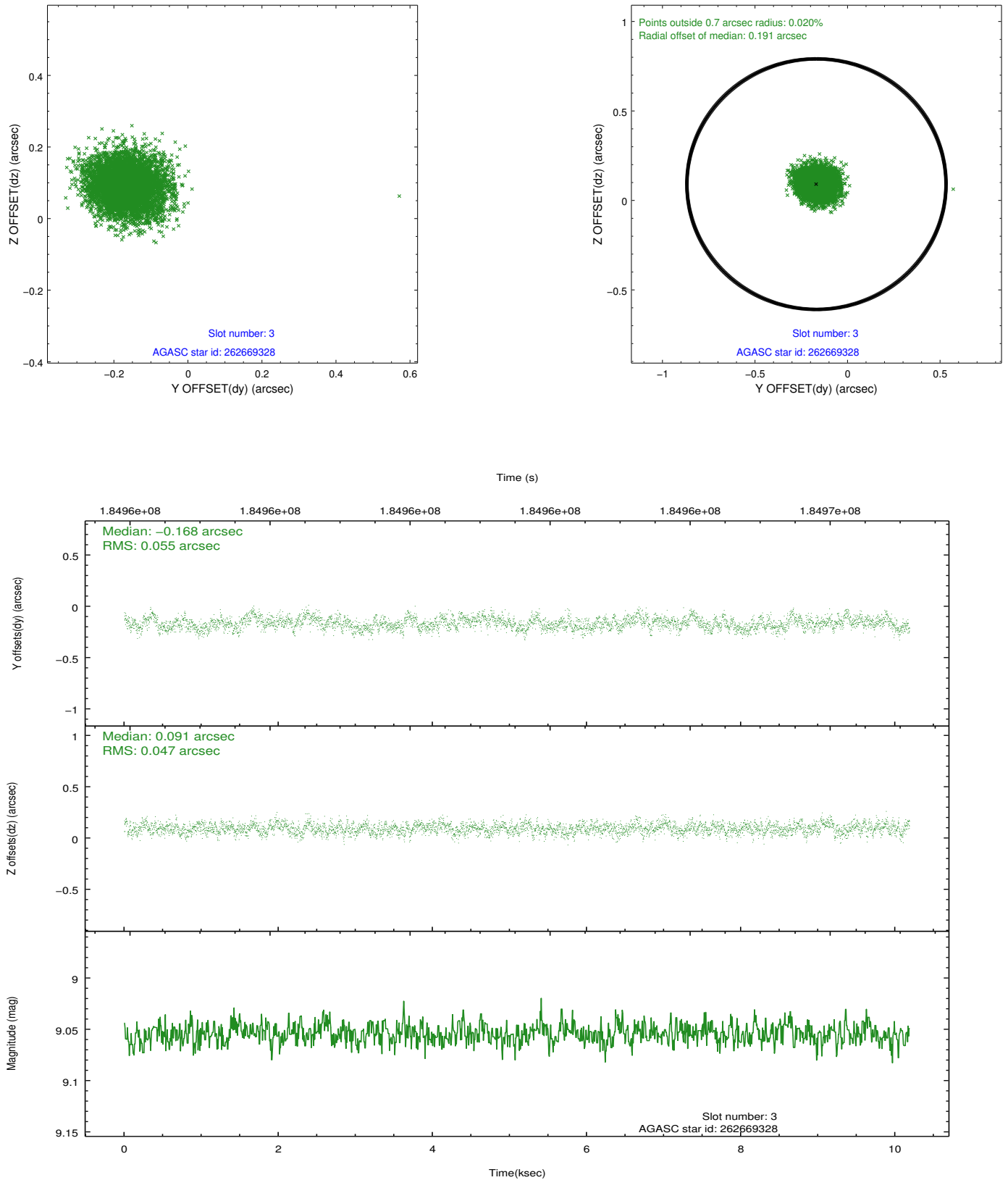


Slot Statistics

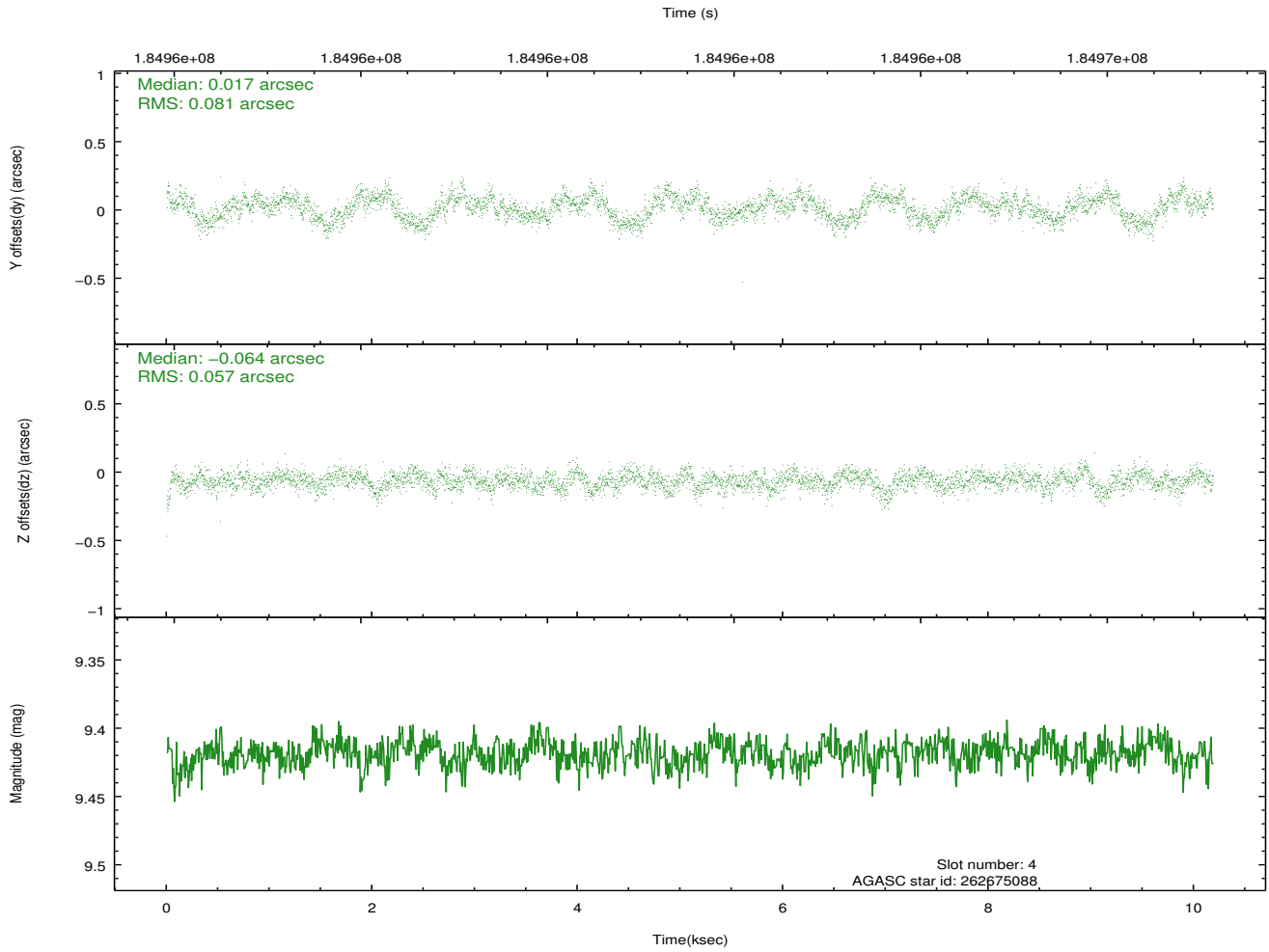
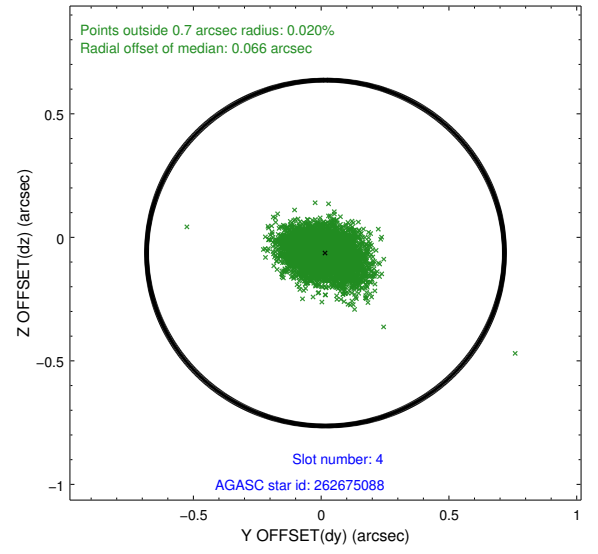
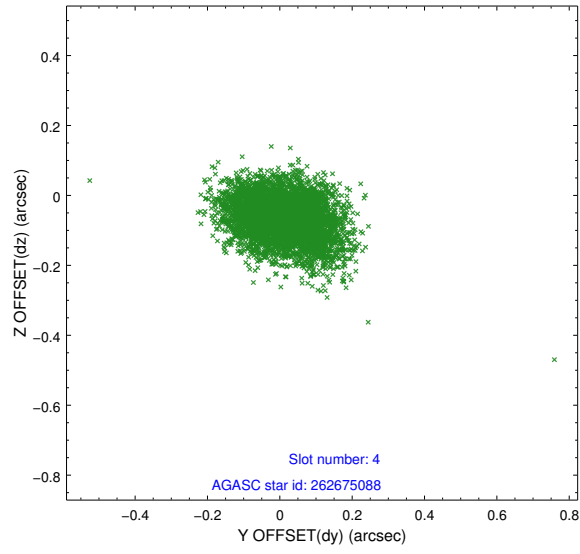
slot	status	id	mag	n_pts	med_dy	med_dz	dr1	dr2	ra	dec	mean_y	mean_z
0	FID	ACIS-S-1	7.18	2486	0.007	-0.046	0.023	0.033	0.000000	0.000000	935.80	-1727.47
1	FID	ACIS-S-4	7.20	2486	0.047	0.034	0.015	0.022	0.000000	0.000000	2153.53	176.24
2	FID	ACIS-S-5	7.23	2486	-0.080	0.025	0.010	0.014	0.000000	0.000000	-1812.50	170.39
3	GUIDE	262669328	9.05	4971	-0.168	0.091	0.077	0.123	206.280601	28.188398	1844.89	-1570.25
4	GUIDE	262675088	9.42	4969	0.017	-0.064	0.105	0.172	204.972671	28.348526	-1621.90	776.16
5	GUIDE	262676040	9.15	4971	0.015	0.061	0.090	0.142	205.599968	27.875331	-593.48	-1633.59
6	GUIDE	262679552	8.58	4969	0.058	0.053	0.062	0.101	205.617019	28.202388	-25.03	-601.57
7	GUIDE	262681752	9.58	4967	0.082	-0.140	0.096	0.153	205.441552	28.454810	-121.99	459.38

2.4 Star Slots

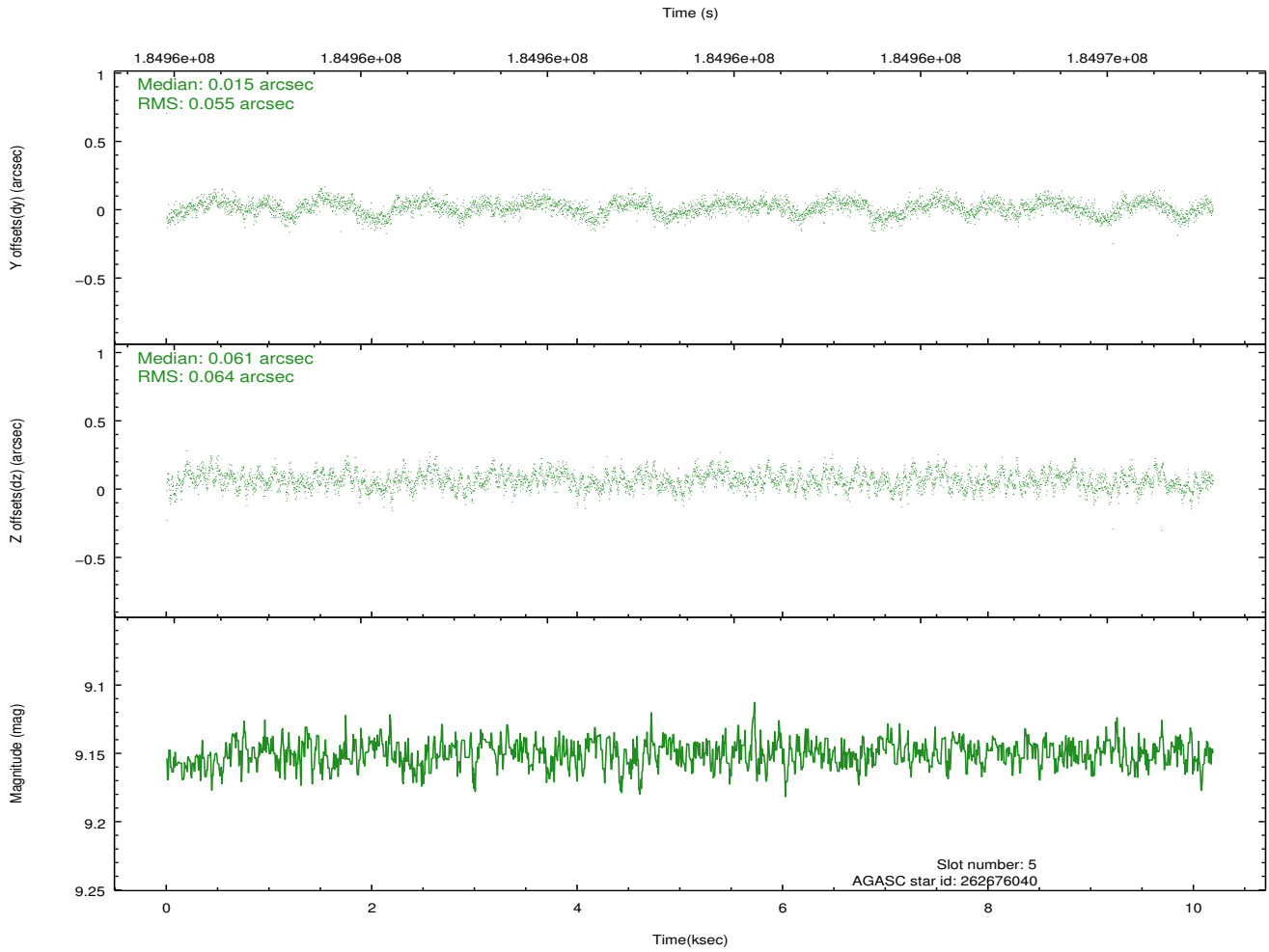
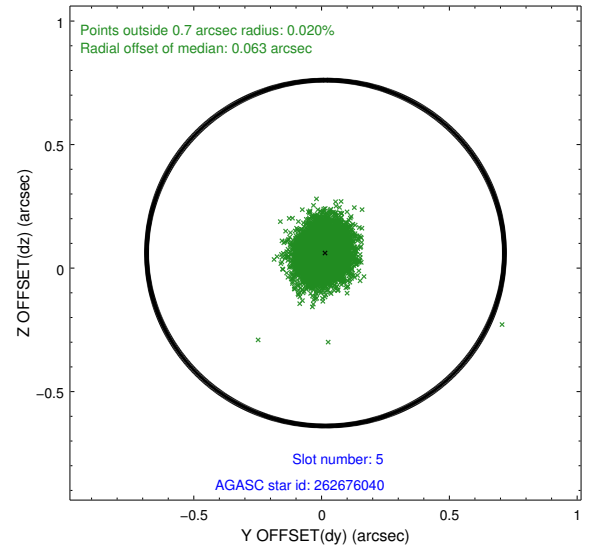
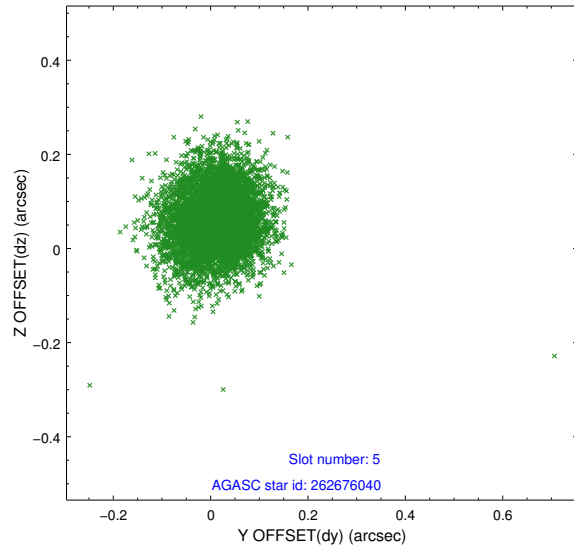
2.4.1 Slot 3



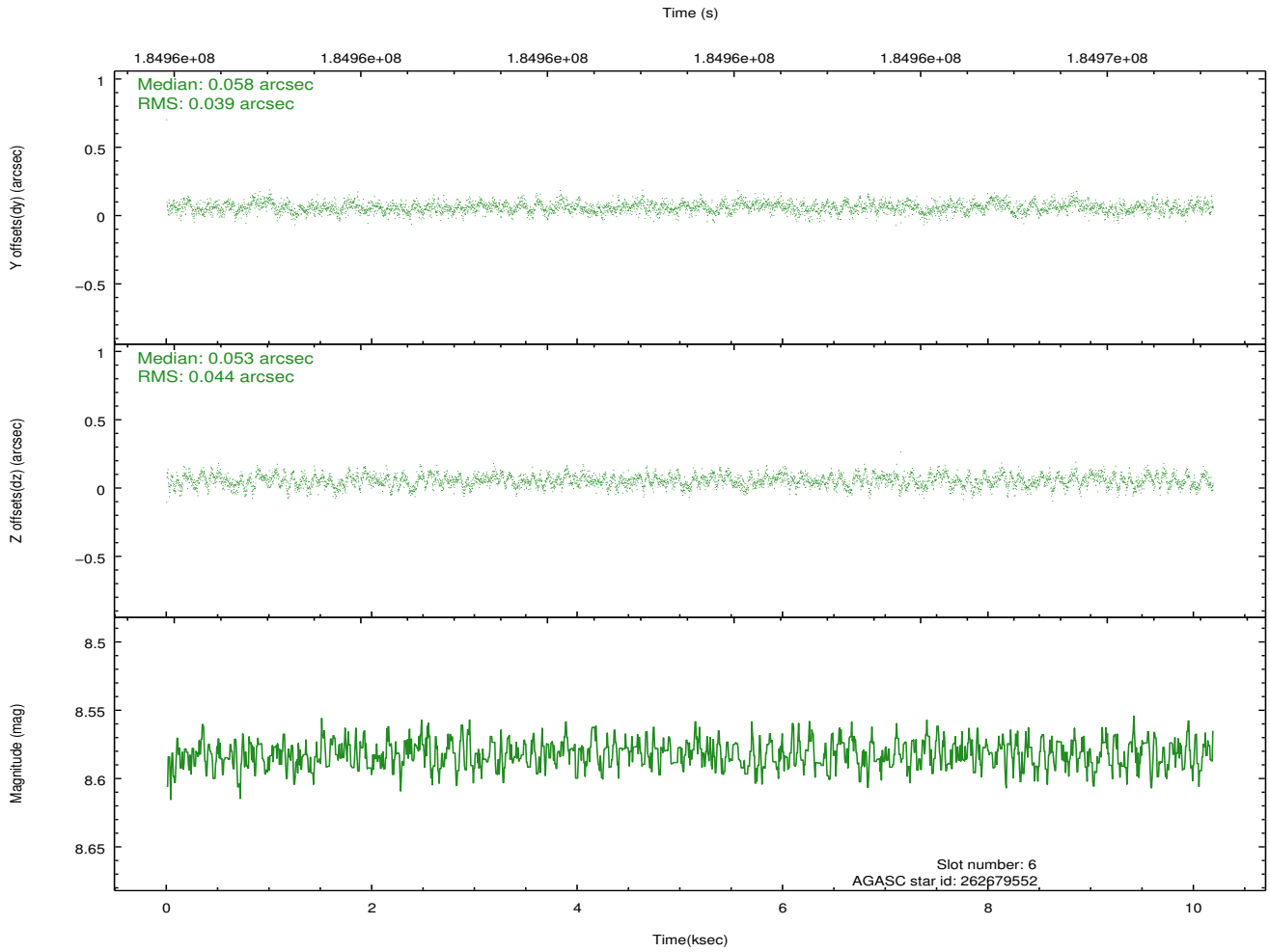
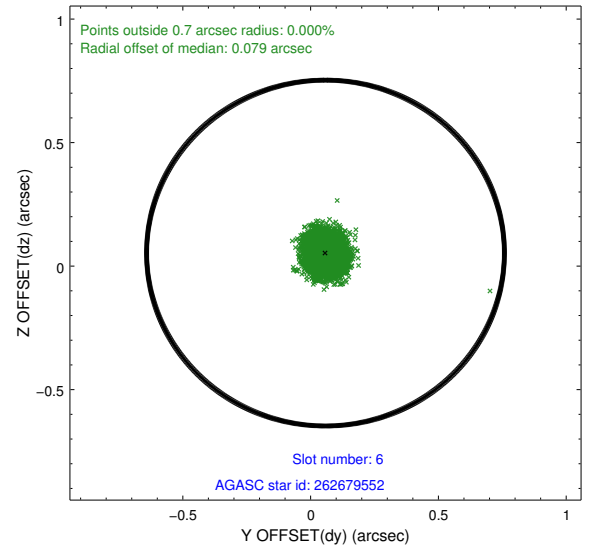
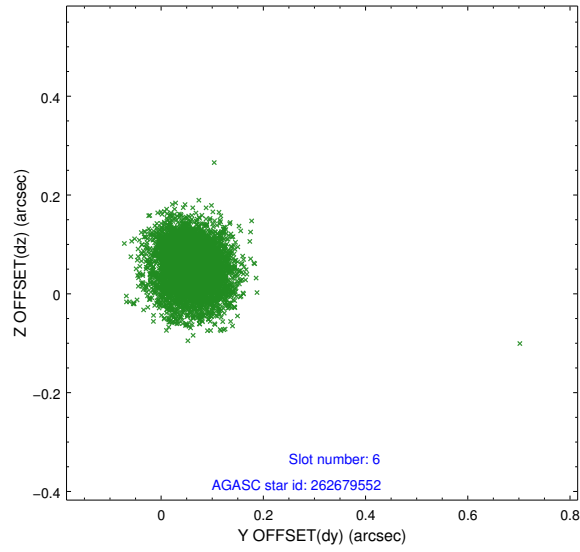
2.4.2 Slot 4



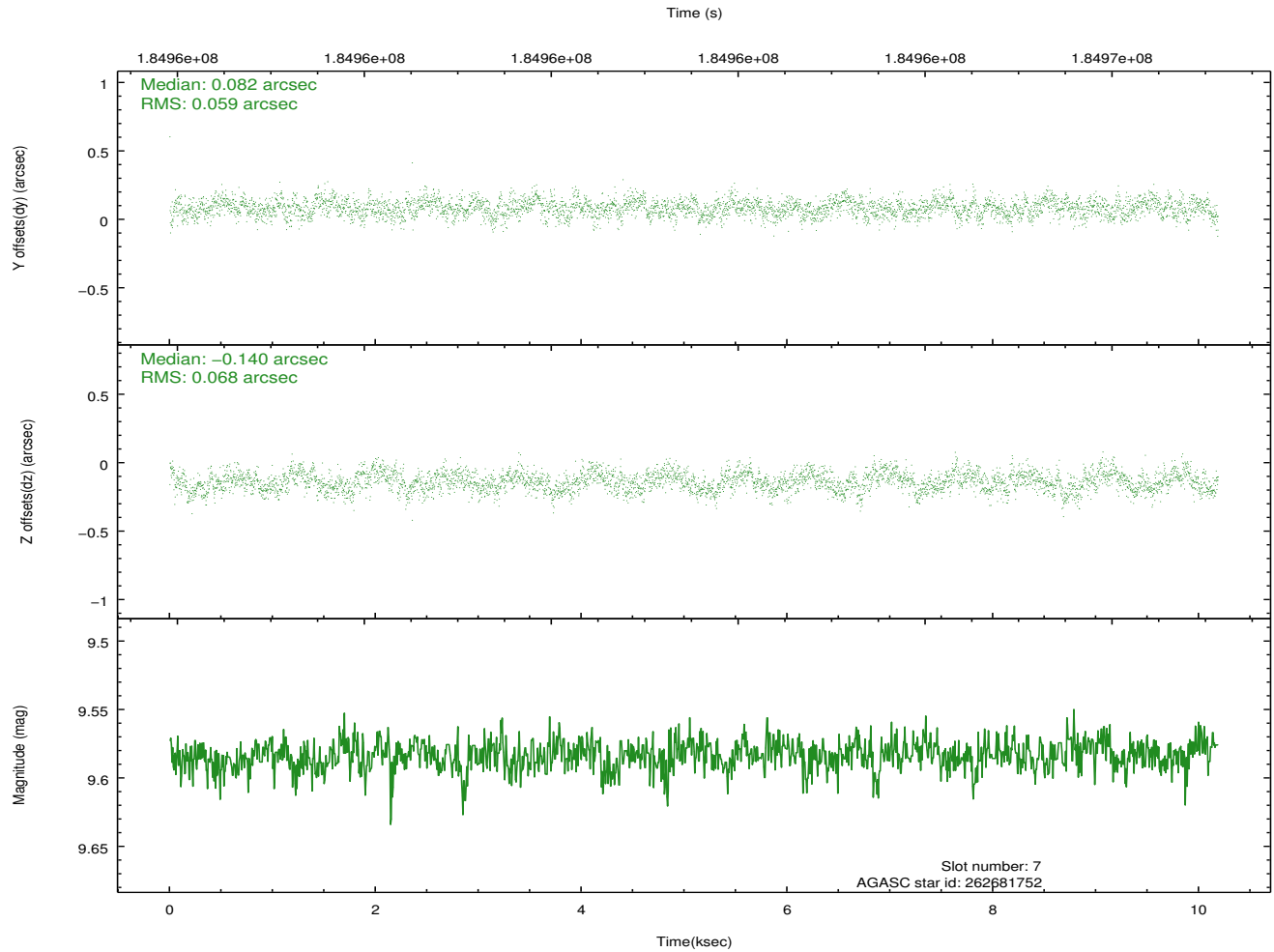
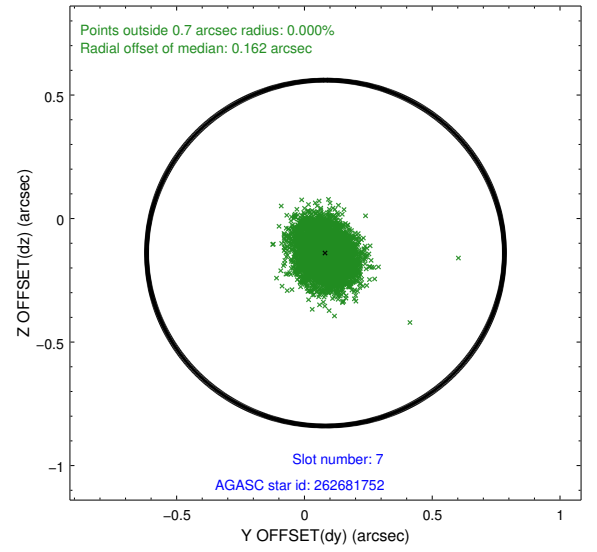
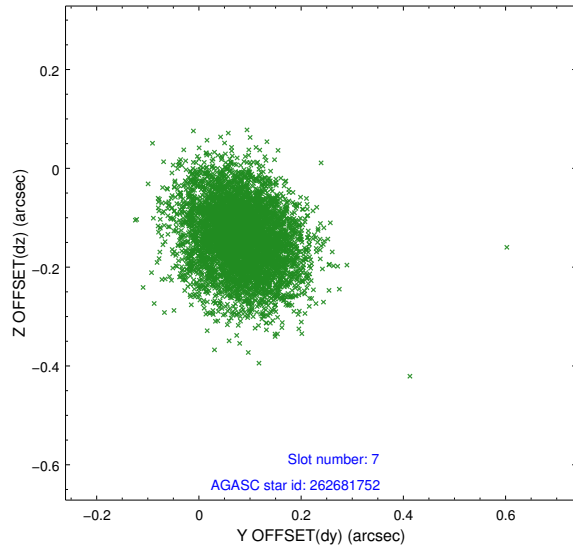
2.4.3 Slot 5



2.4.4 Slot 6

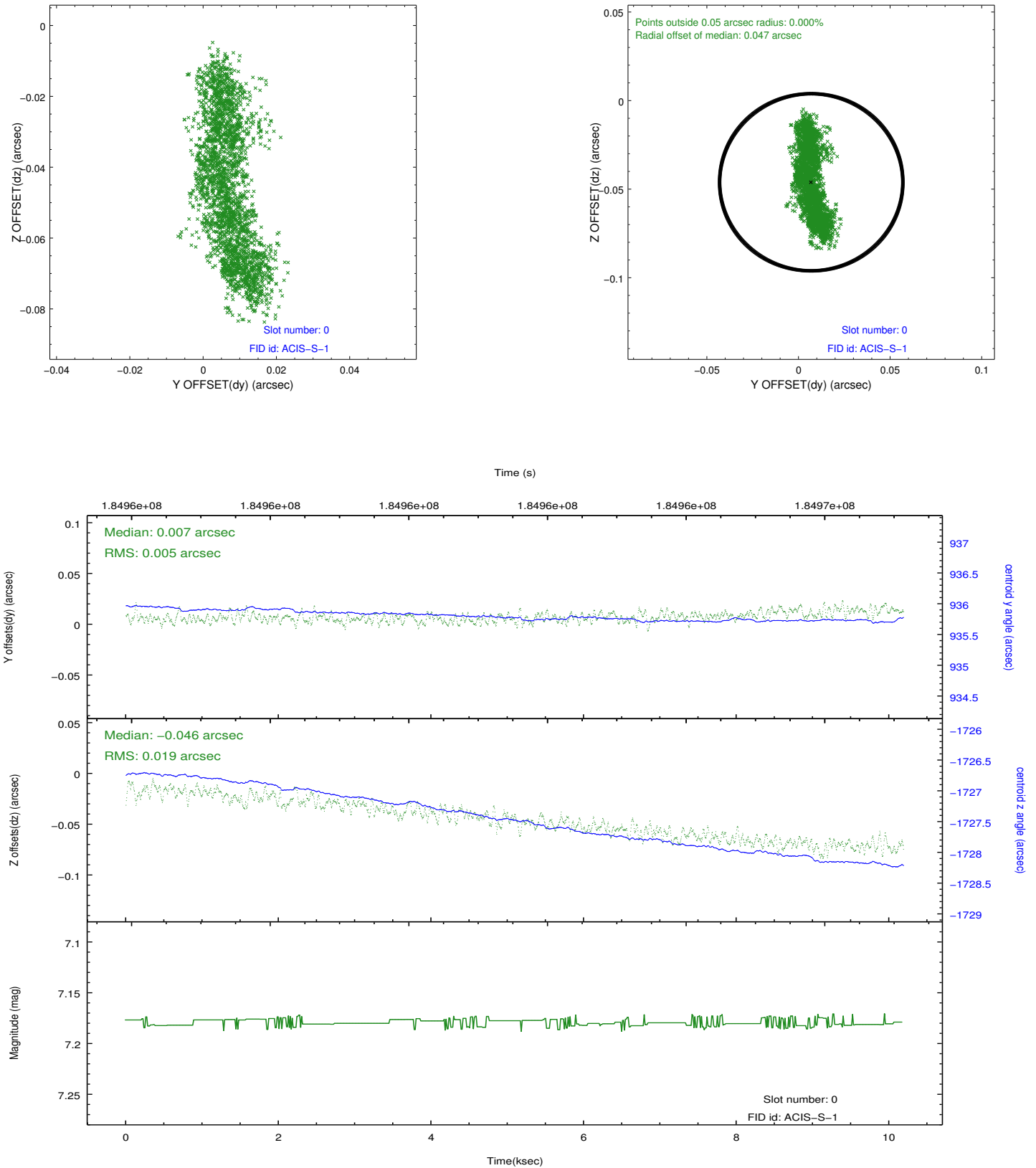


2.4.5 Slot 7

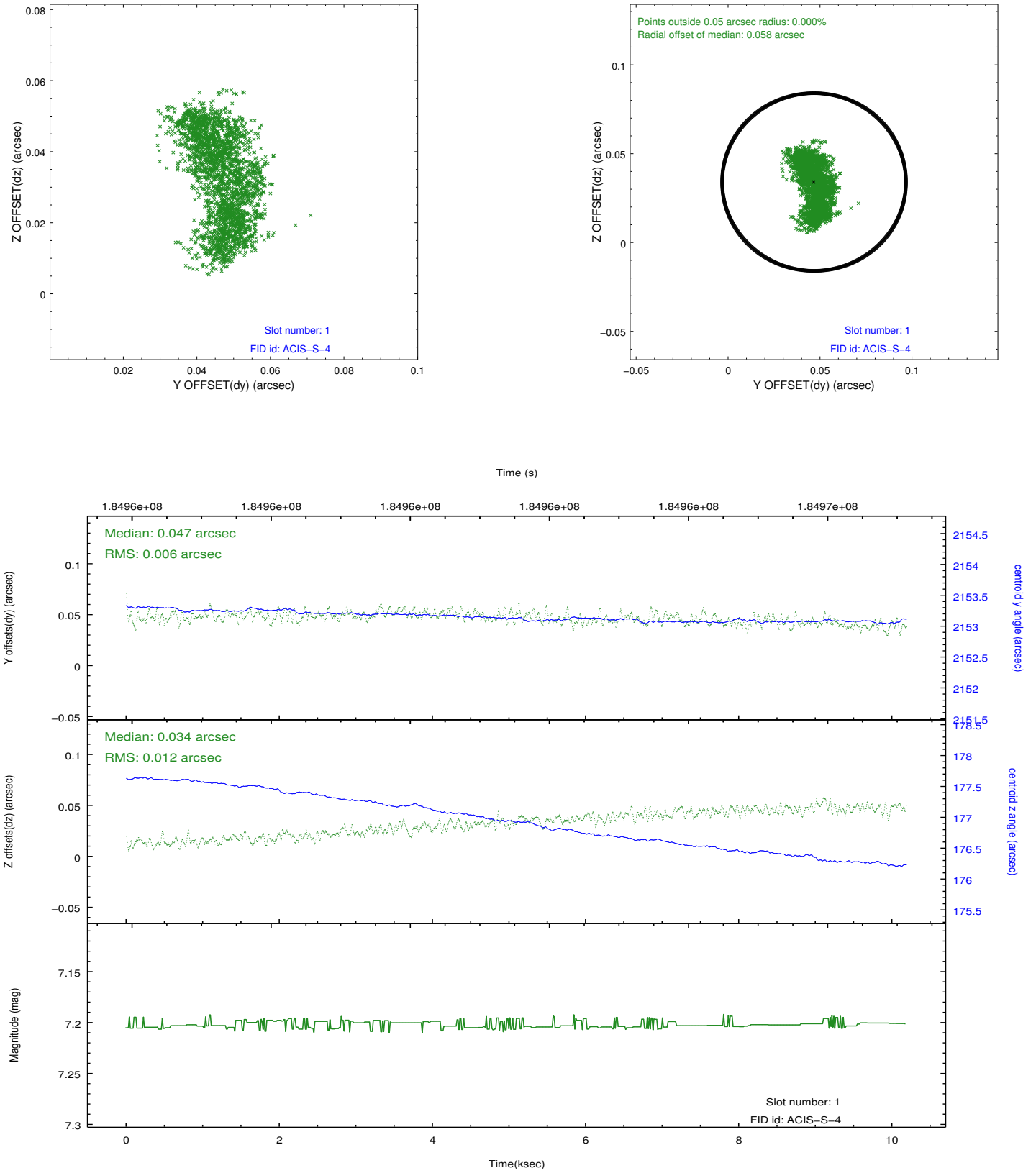


2.5 FID Slots

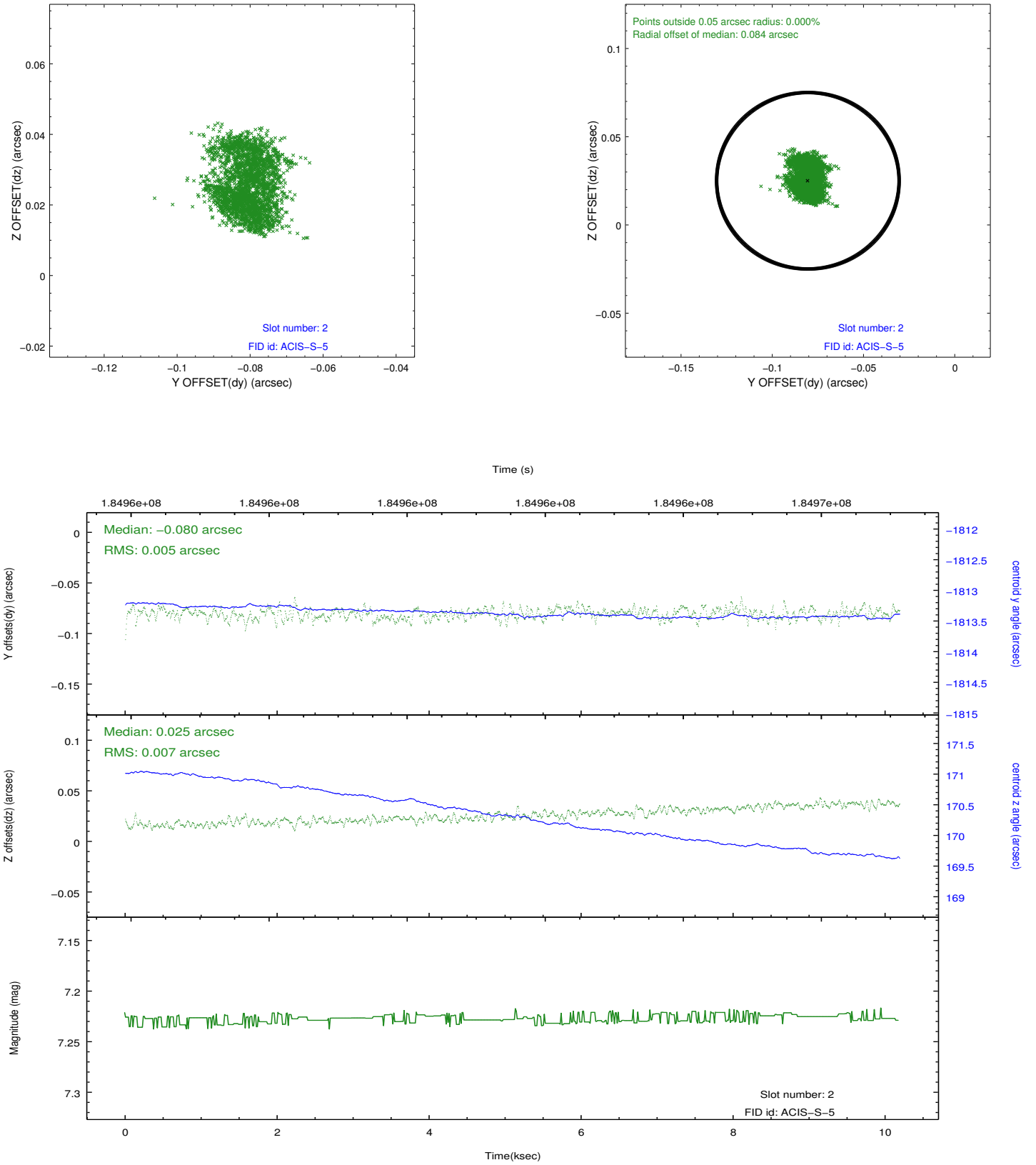
2.5.1 Slot 0



2.5.2 Slot 1



2.5.3 Slot 2



A Summary

A.1 Status

V&V Scientist	Beth Sundheim
V&V Date (YYYY-MM-DD)	2012.11.27
V&V Edition	1
V&V Disposition and Status	OK
V&V Charge Time	10.187

A.2 Comments

Joint proposal with HST.