

V&V Reference Report

L2 ASCDS Version : 8.5

Observation 4482 - L2 Version 3
Chandra X-Ray Center

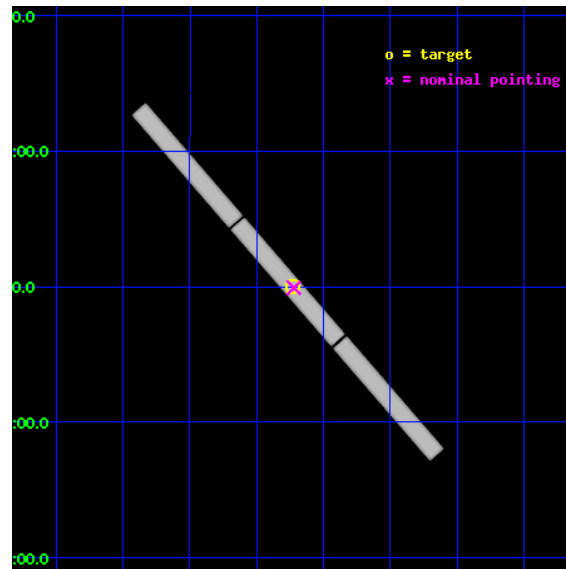
L2 Processing Date : Dec 6 2012

Contents

1	Front	2
2	OBI	3
2.1	OBI	3
2.1.1	Images	3
2.1.2	Parameters	4
2.1.3	Events	4
2.2	Compared Parameters	5
2.3	Aspect	6
2.4	Star Slots	9
2.4.1	Slot 3	9
2.4.2	Slot 4	10
2.4.3	Slot 5	11
2.4.4	Slot 6	12
2.4.5	Slot 7	13
2.5	FID Slots	14
2.5.1	Slot 0	14
2.5.2	Slot 1	15
2.5.3	Slot 2	16
3	Gratings	17
3.1	LETG Arm	17
A	Summary	19
A.1	Status	19
A.2	Comments	19

1 Front

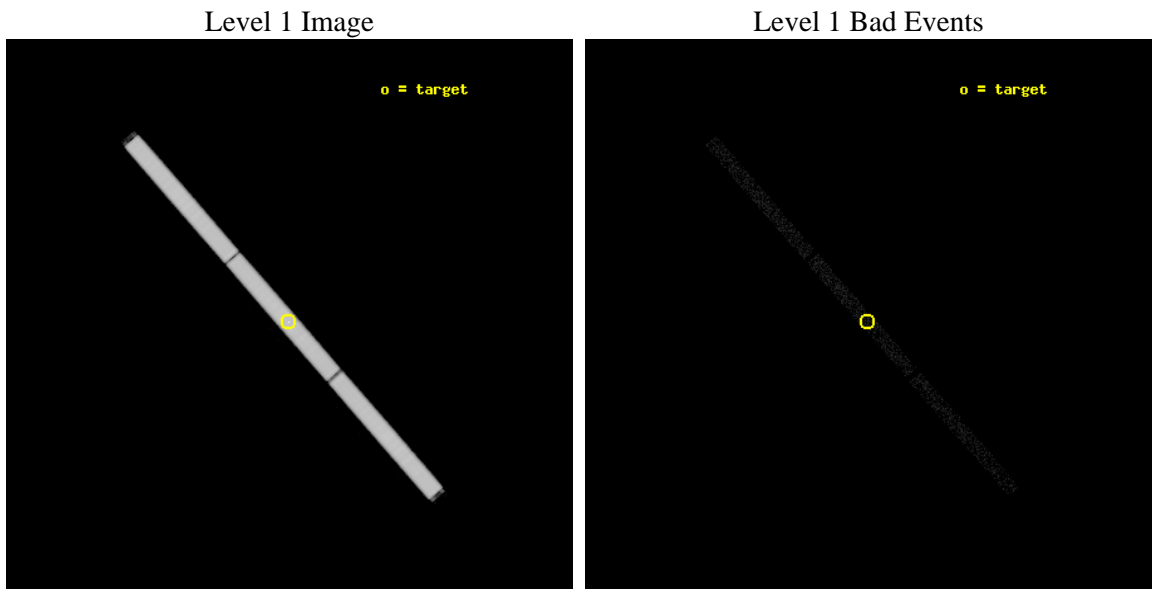
seq_num	200251	Sequence number
obs_id	4482	Observation id
title	Resolving the 36 Oph and 70 Oph Binary Systems and Correlating Their Coronal Properties with Their Winds	Proposal title
observer	Dr. Brian Wood	Principal investigator
object	70 Oph	Source name
ra_targ	271.36375	Observer's specified target RA [deg]
dec_targ	2.500111	Observer's specified target Dec [deg]
ra_nom	271.36055339871	Nominal RA [deg]
dec_nom	2.4966575374329	Nominal Dec [deg]
roll_nom	228.78774465663	Nominal Roll [deg]
revision	3	Processing version of data
ontime	78940.634755909	[s]
livetime	77921.952917739	Ontime multiplied by DTCOR
l2events	4726927	Number of level 2 events



2 OBI

2.1 OBI

2.1.1 Images



2.1.2 Parameters

obi_num	0	Obi number	sched_exp_time	78771.000000	[s] Scheduled observation exposure time
ascdsver	8.5	Processing system revision	ontime	78940.634755909	[s]
caldsver	4.5.4	 	l1events	6378783	Number of level 1 events
date	2012-12-06T13:26:12	Date and time of file creation			
revision	3	Processing version of data			

2.1.3 Events

Level 1 Events

	segment 1	segment 2	segment 3
level 1 events	2152556	2110113	2116114
rejected events	24691	24190	24319
rejected %	1%	1%	1%

2.2 Compared Parameters

Parameter	Planned	Actual	Parameter	Planned	Actual
Instrument	HRC	HRC	Obspar format version number	7	7
Detector	HRC-S	HRC-S	Obspar file type	PREDICTED	ACTUAL
Grating	LETG	LETG	Obspar update status	NONE	UPDATED
Data mode	OBSERVING	OBSERVING			
Observation mode	POINTING	POINTING			
[deg] Pointing RA	271.364728	271.3605533987093			
[deg] Pointing Dec	2.524977	2.496657537432935			
[deg] Pointing Roll	228.720221	228.7877446566294			
[deg] Roll angle	40.000000	40.000000			
[deg] Roll tolerance	25.000000	25.000000			
Roll constraint allows 180D rotation	Y	Y			
[mm] SIM focus pos	-1.429586	-1.428180813131781			
[mm] SIM defocus	0.1037507710433287	0.1051558262725154			
[mm] SIM translation stage pos	250.455976	250.4635187648994			
[mm] SIM translation stage offset	0	-0.007540371344731511			
[s] Observation start time (MET)	206666280.184000	206665204.97412			
Observation start date	2004-07-19T23:16:56	2004-07-19T23:00:04			
[s] Observation end time (MET)	206745051.184000	206745751.5277			
Observation end date	2004-07-20T21:09:47	2004-07-20T21:22:31			

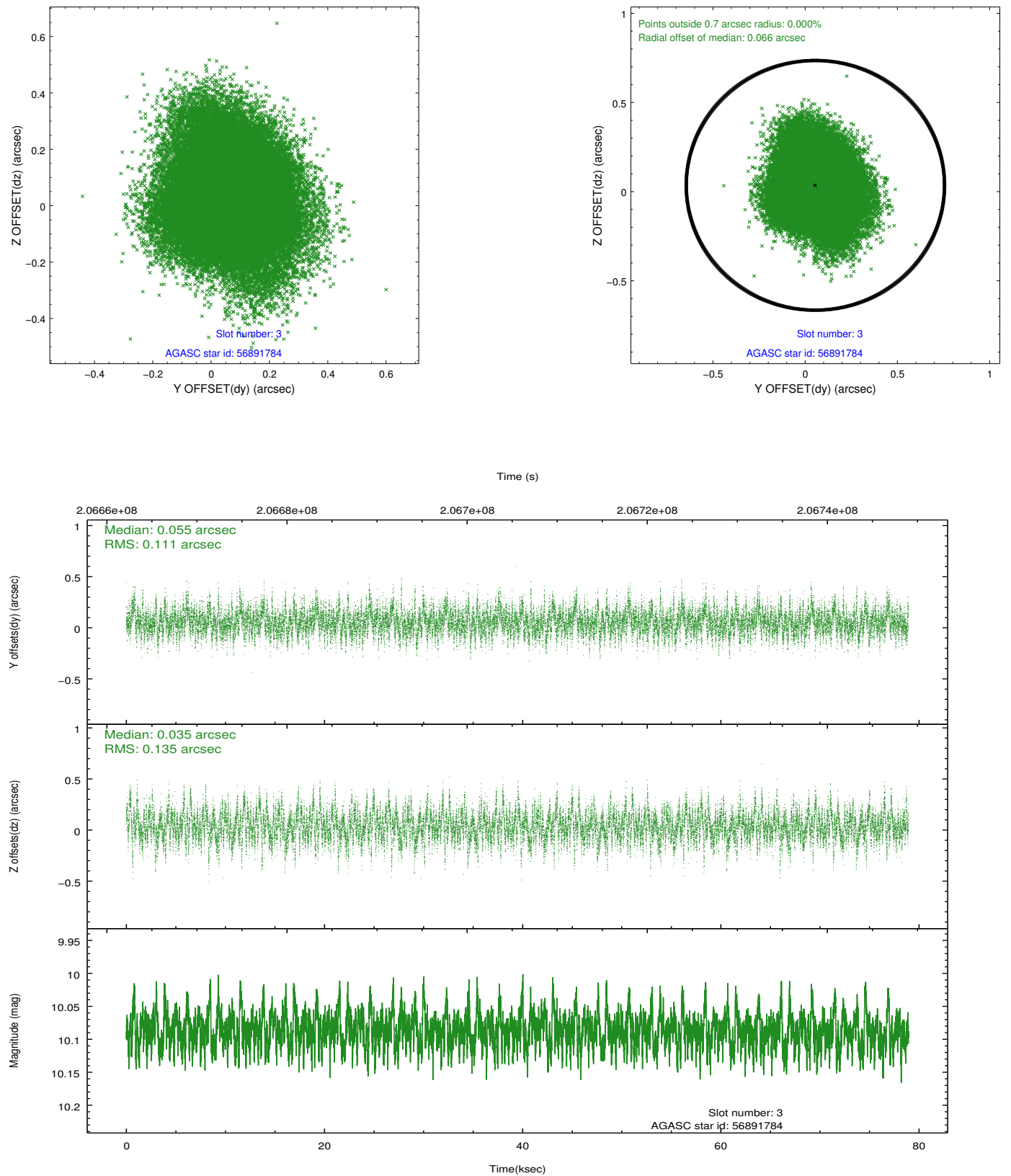
2.3 Aspect

Slot Statistics

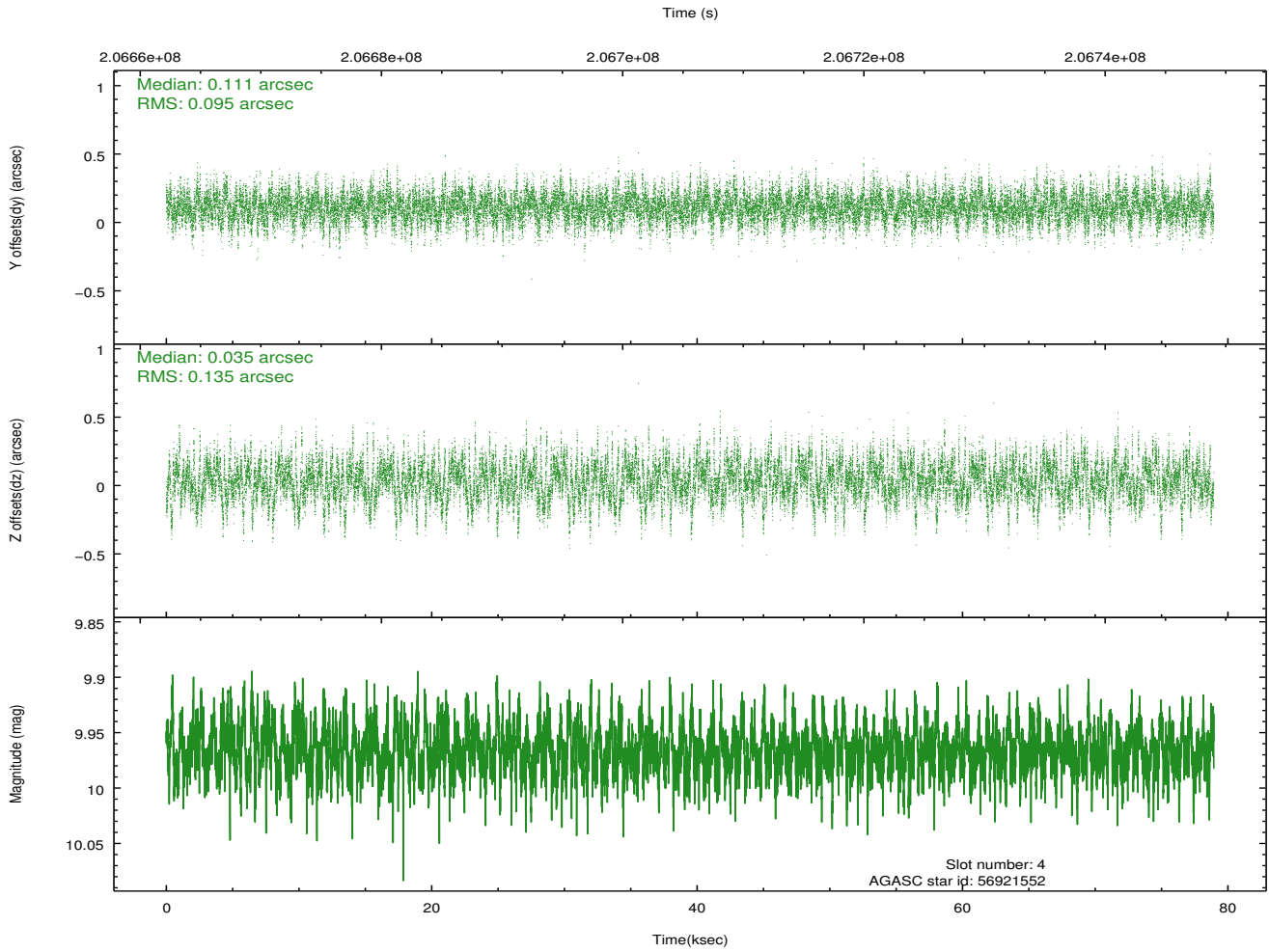
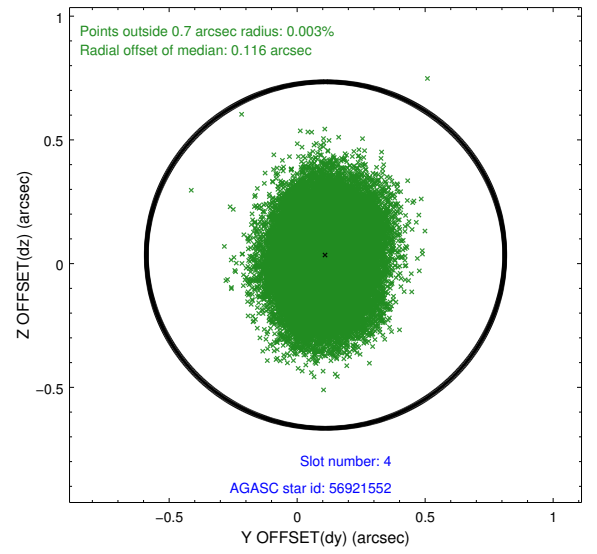
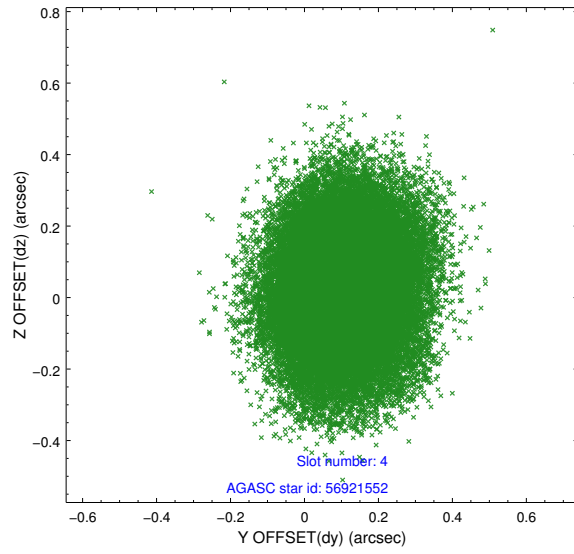
slot	status	id	mag	n_pts	med_dy	med_dz	dr1	dr2	ra	dec	mean_y	mean_z
0	FID	HRC-S-1	6.99	19254	0.098	-0.133	0.007	0.012	0.000000	0.000000	-1161.93	-458.14
1	FID	HRC-S-2	6.99	19254	0.097	-0.098	0.020	0.051	0.000000	0.000000	1237.69	-450.76
2	FID	HRC-S-4	6.96	19254	0.207	-0.072	0.019	0.050	0.000000	0.000000	1236.50	574.00
3	GUIDE	56891784	10.09	38473	0.055	0.035	0.185	0.309	271.614285	3.109858	-2173.93	-714.93
4	GUIDE	56921552	9.97	38452	0.111	0.035	0.173	0.295	271.339827	2.062406	1310.92	1031.48
5	GUIDE	56923480	6.84	38507	-0.096	-0.015	0.071	0.120	271.448186	1.985601	1261.42	1506.99
6	GUIDE	56926856	6.61	38508	0.010	0.015	0.091	0.150	271.155660	1.918993	2135.84	874.22
7	GUIDE	56891296	9.85	38398	-0.095	-0.071	0.139	0.234	271.348171	3.413170	-2363.57	-2154.26

2.4 Star Slots

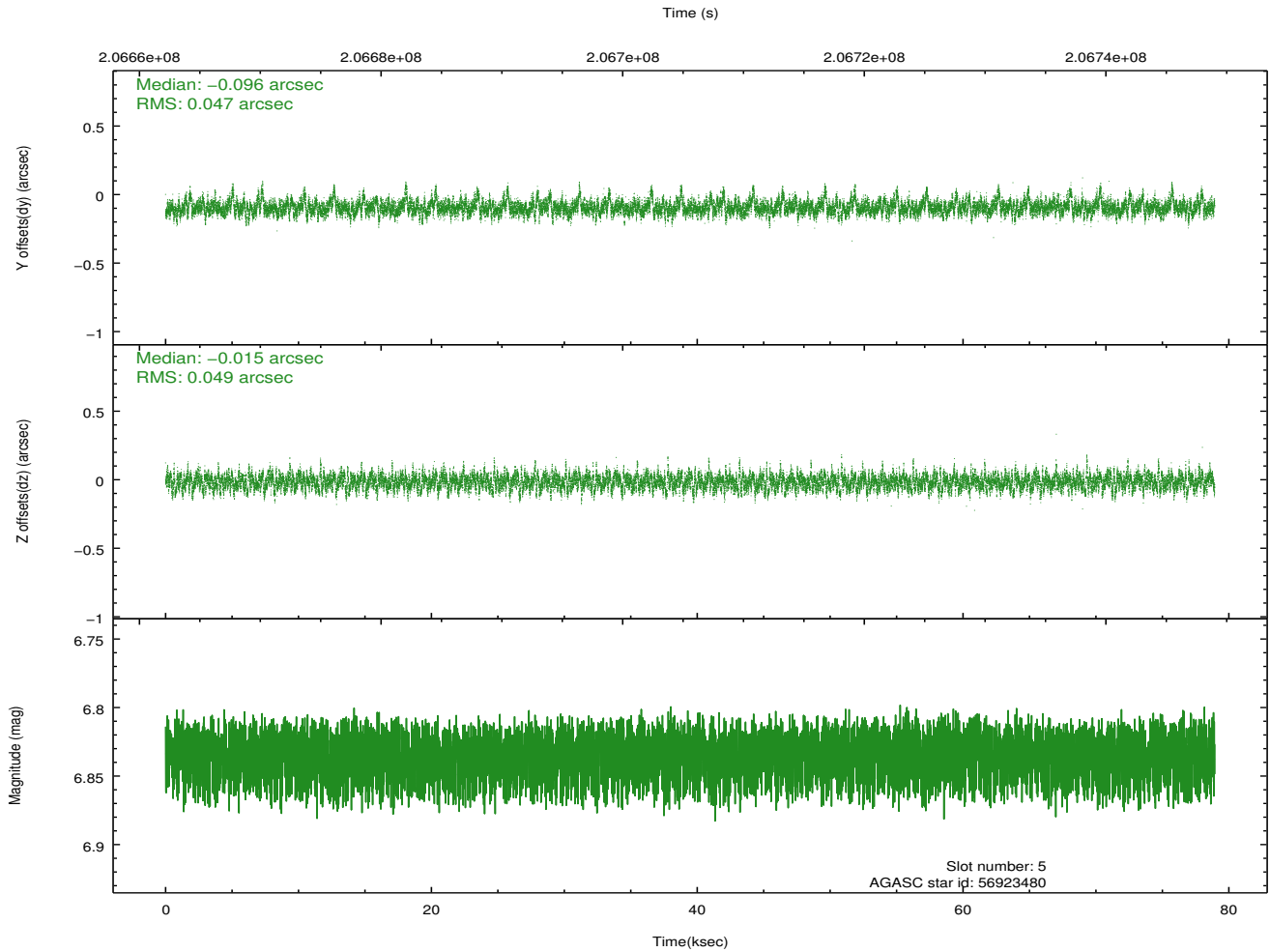
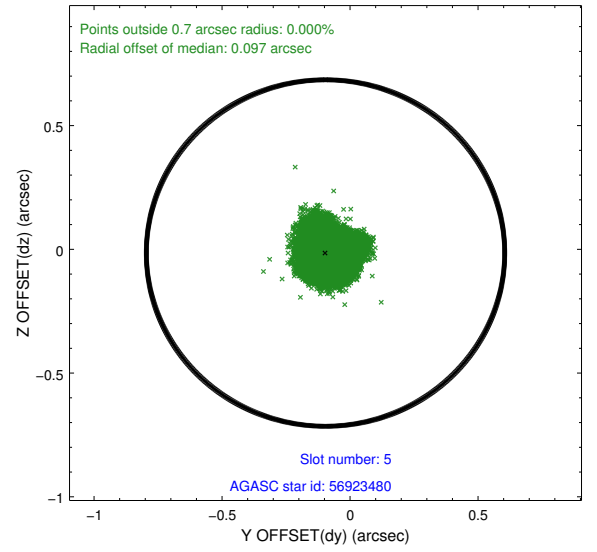
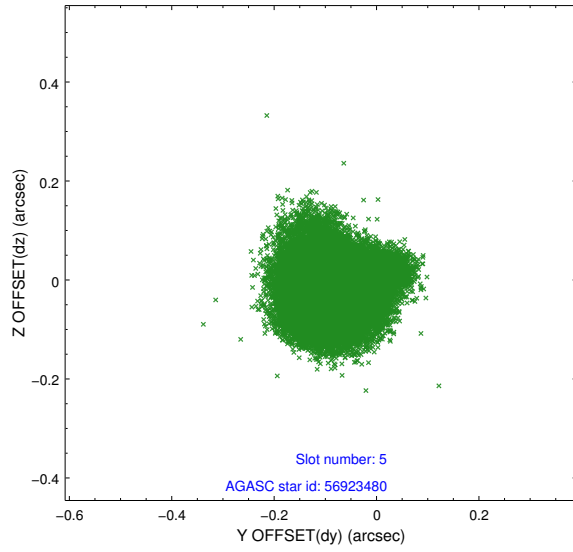
2.4.1 Slot 3



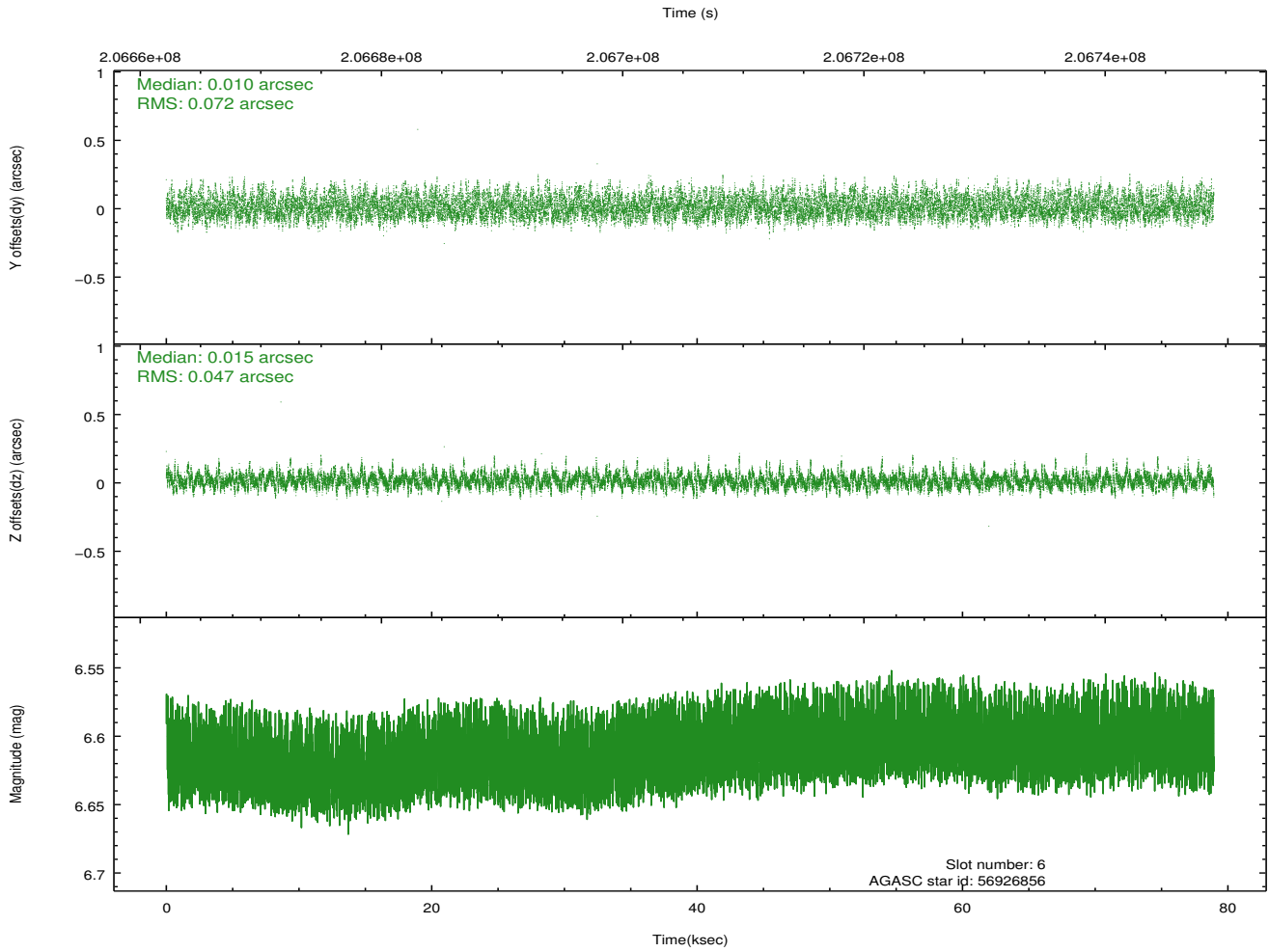
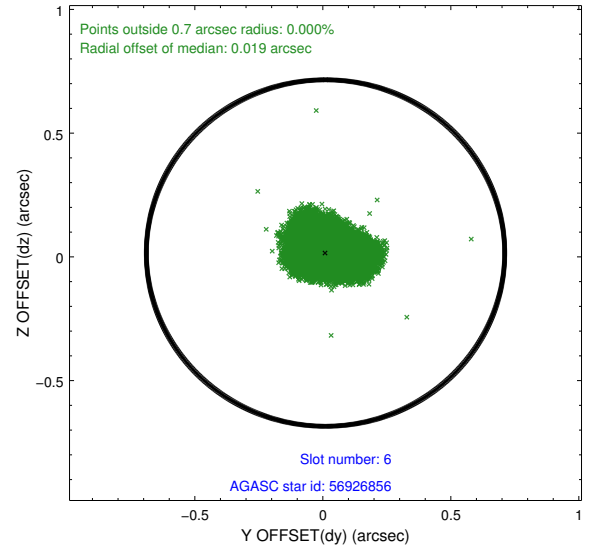
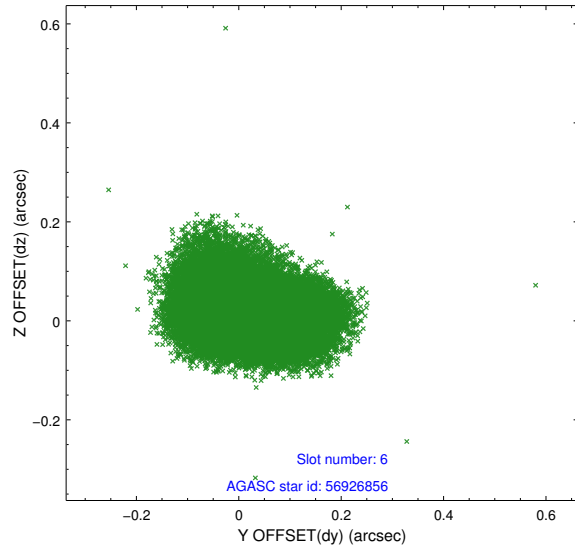
2.4.2 Slot 4



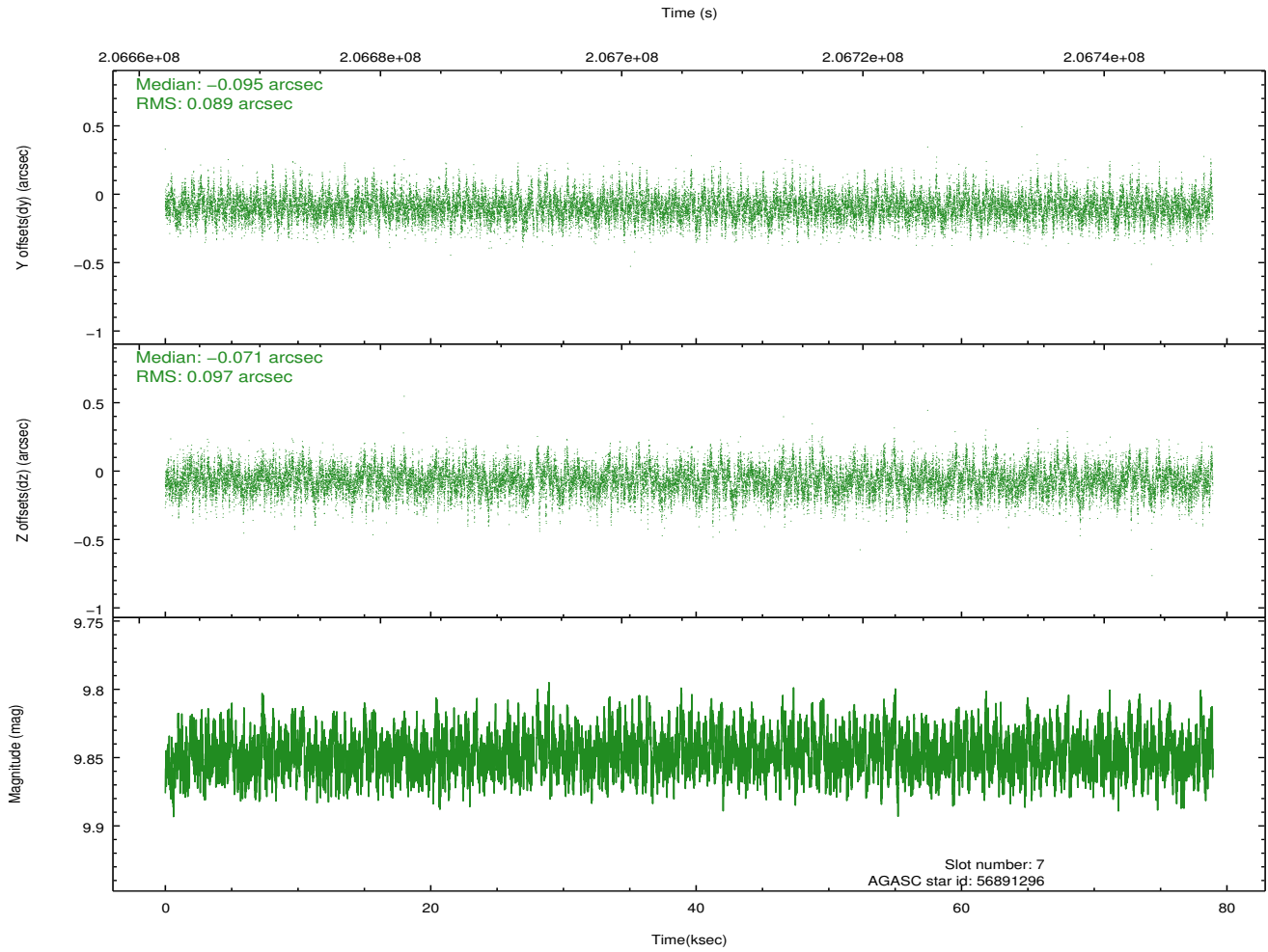
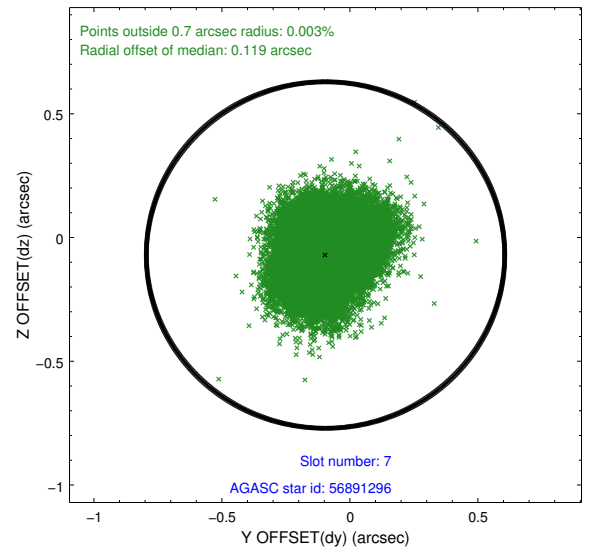
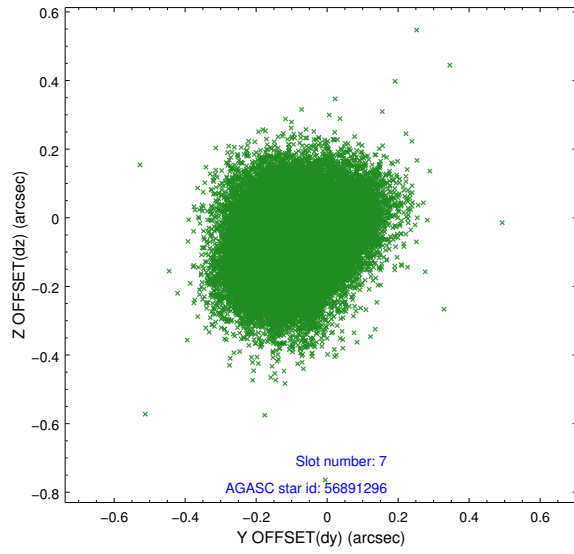
2.4.3 Slot 5



2.4.4 Slot 6

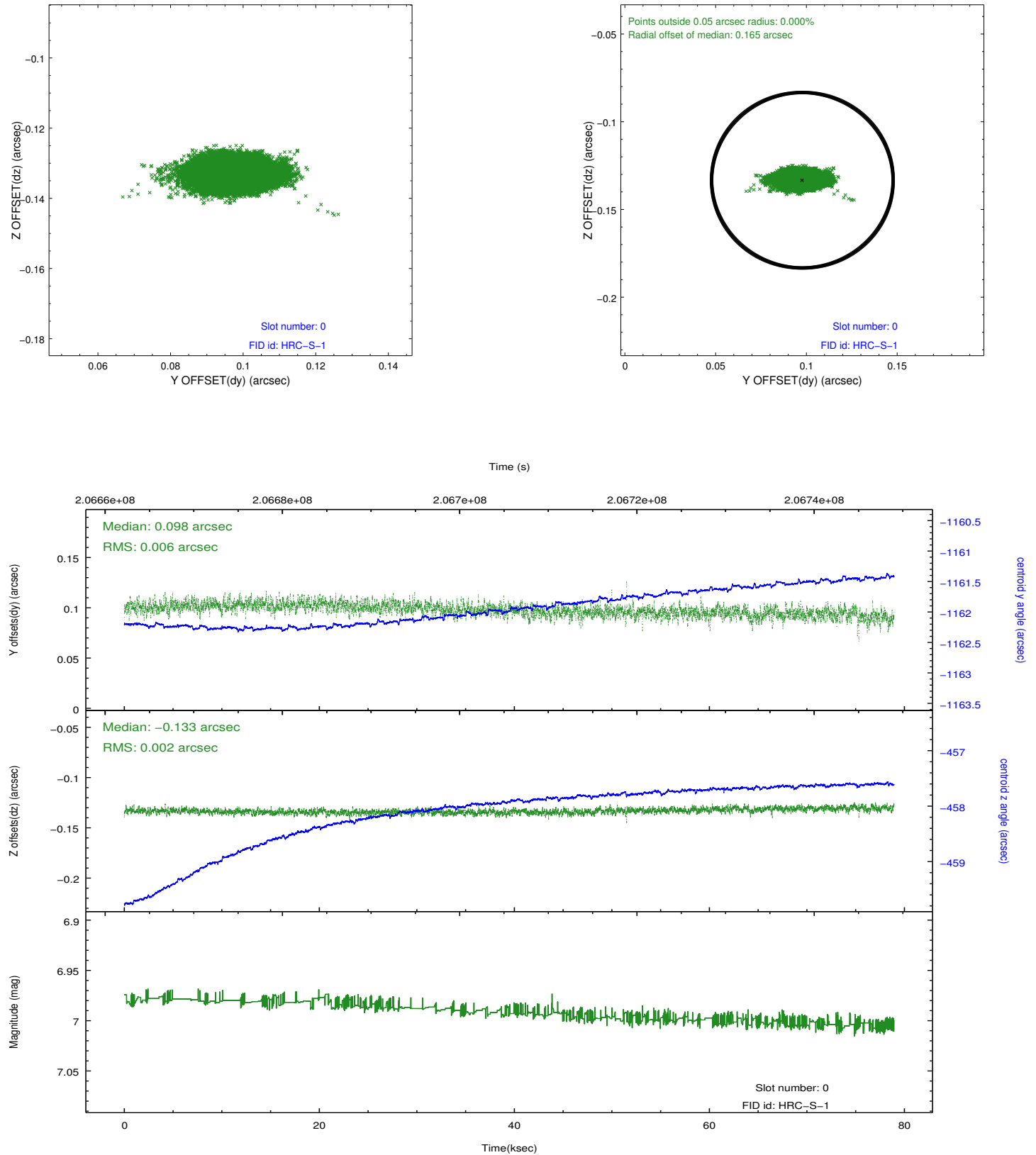


2.4.5 Slot 7

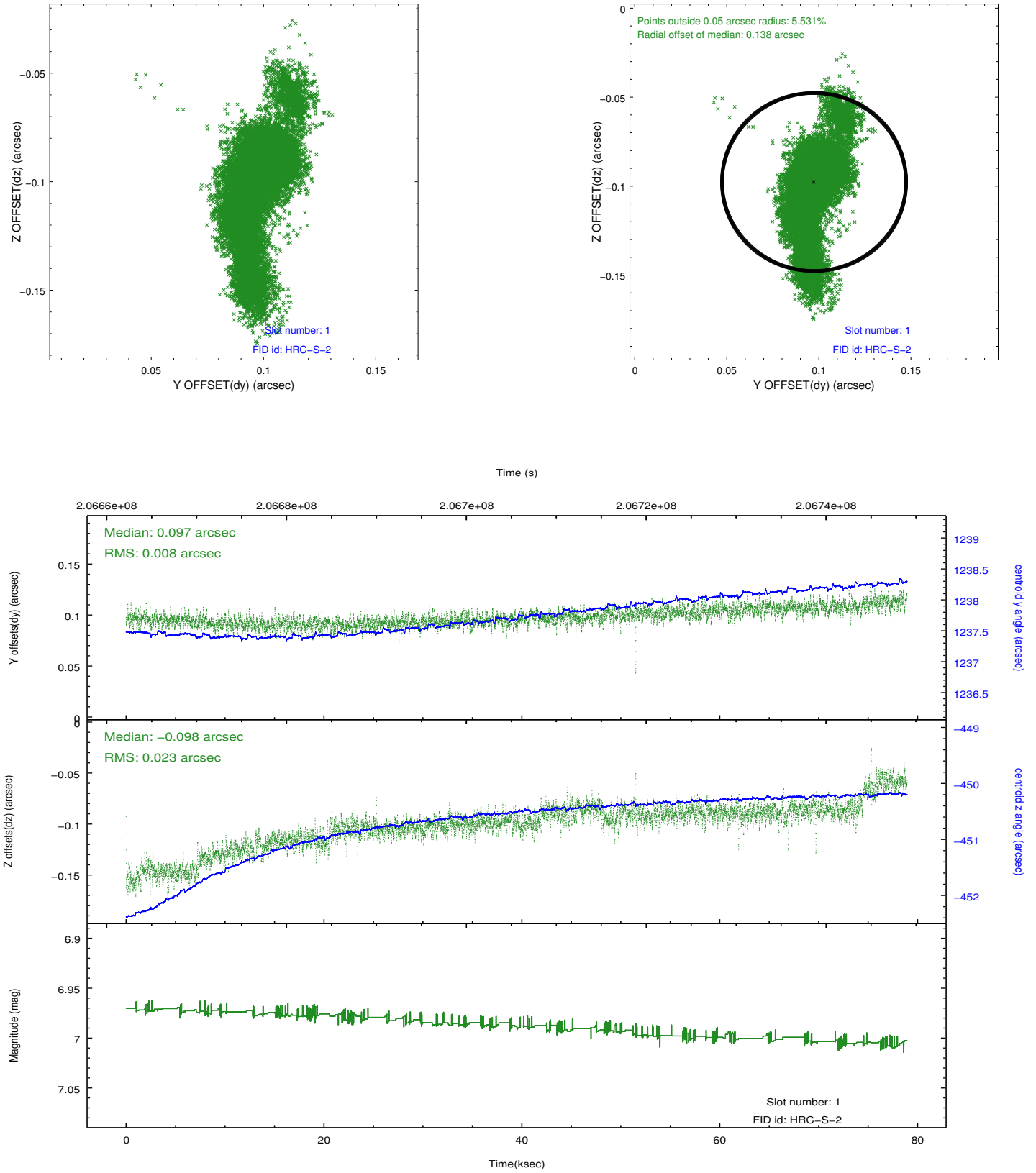


2.5 FID Slots

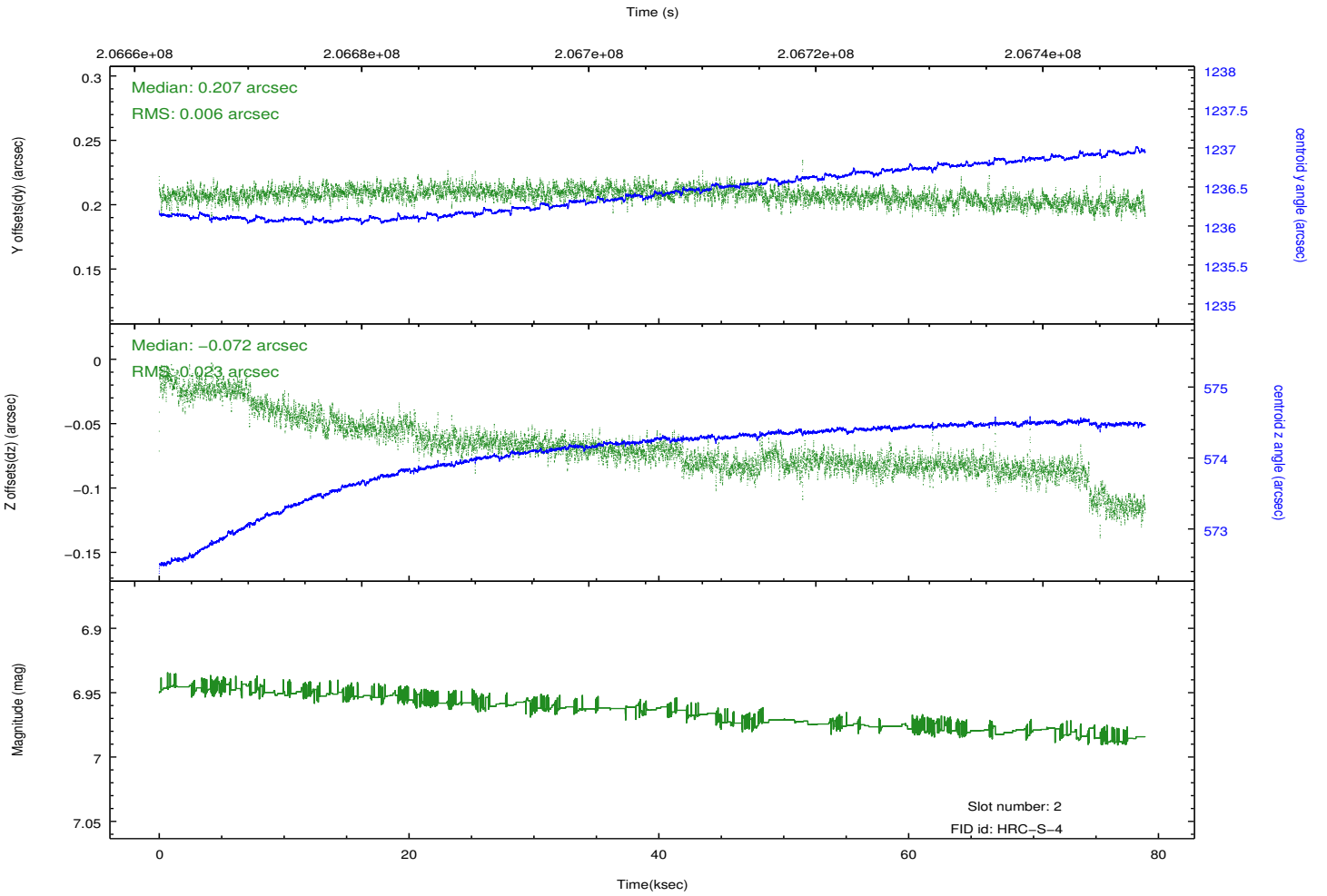
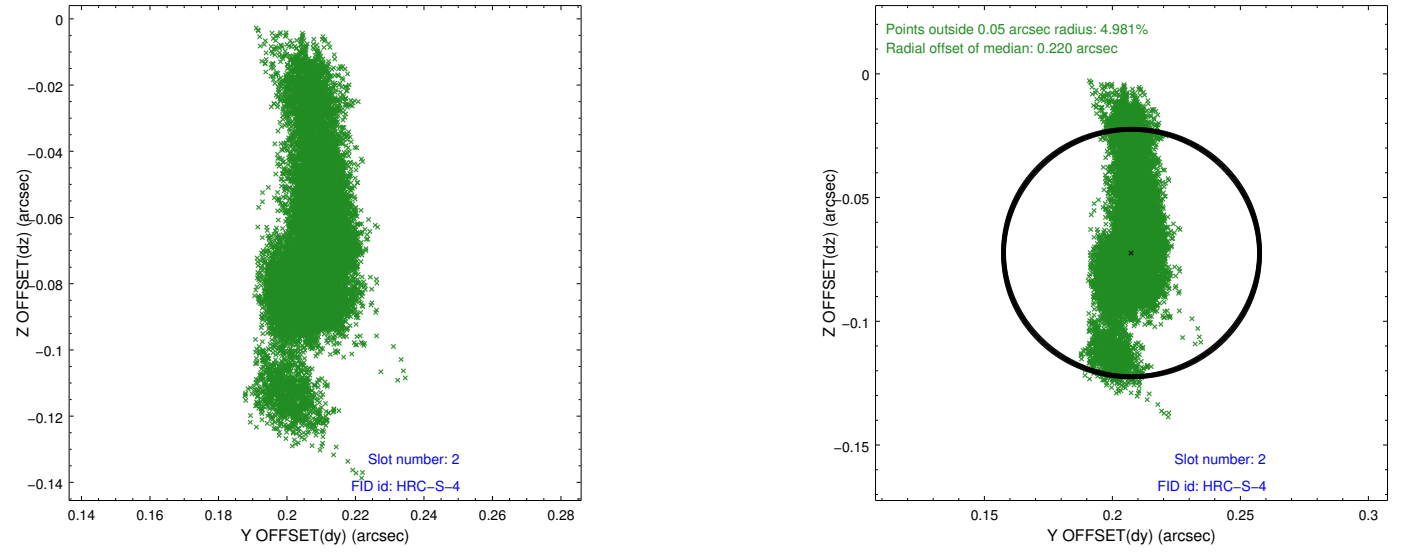
2.5.1 Slot 0



2.5.2 Slot 1

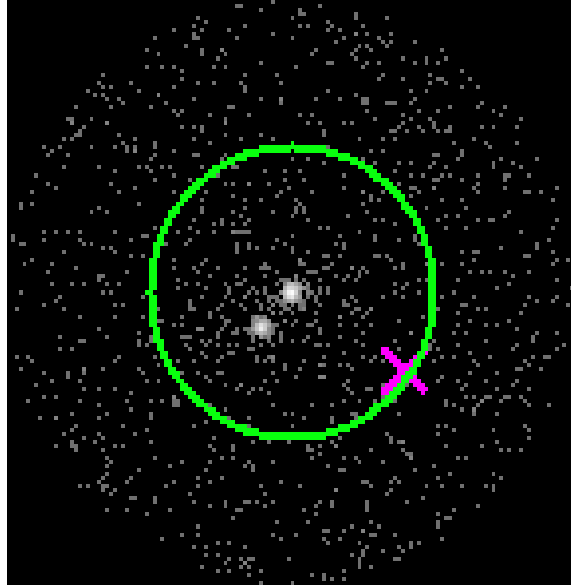


2.5.3 Slot 2

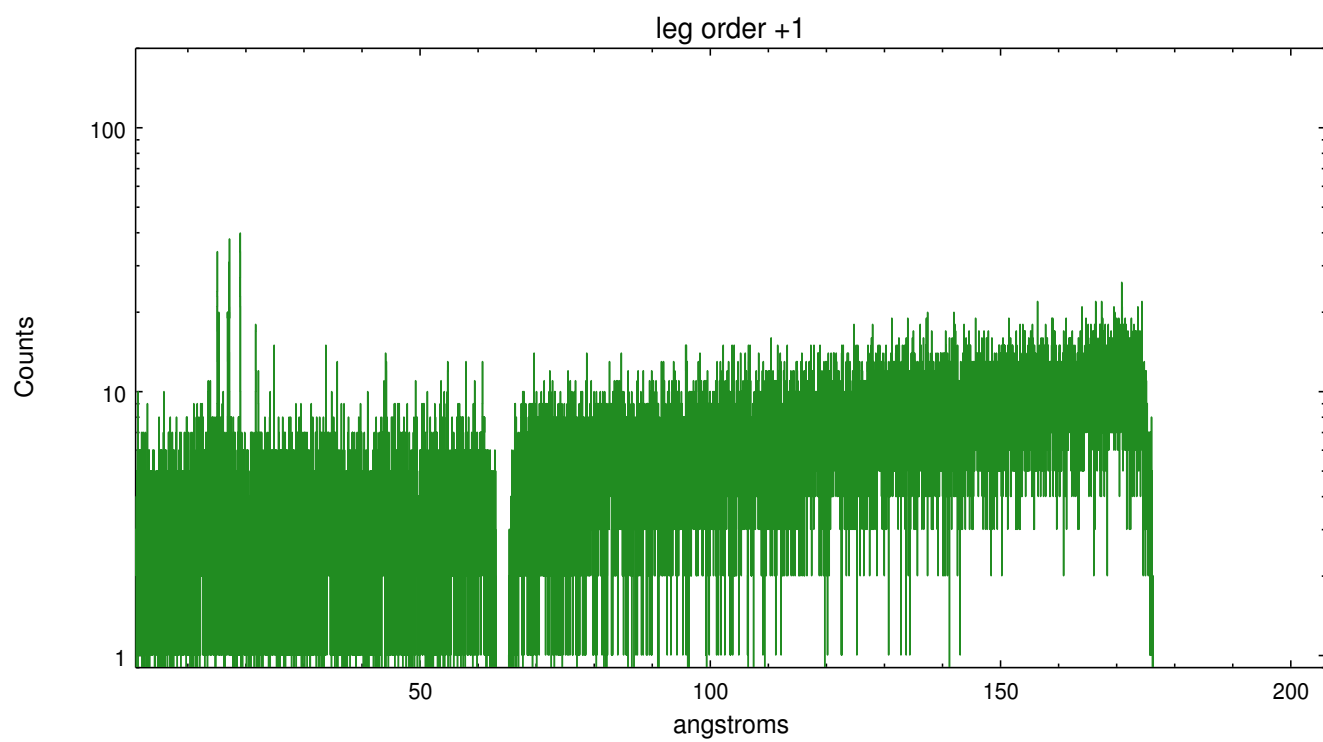
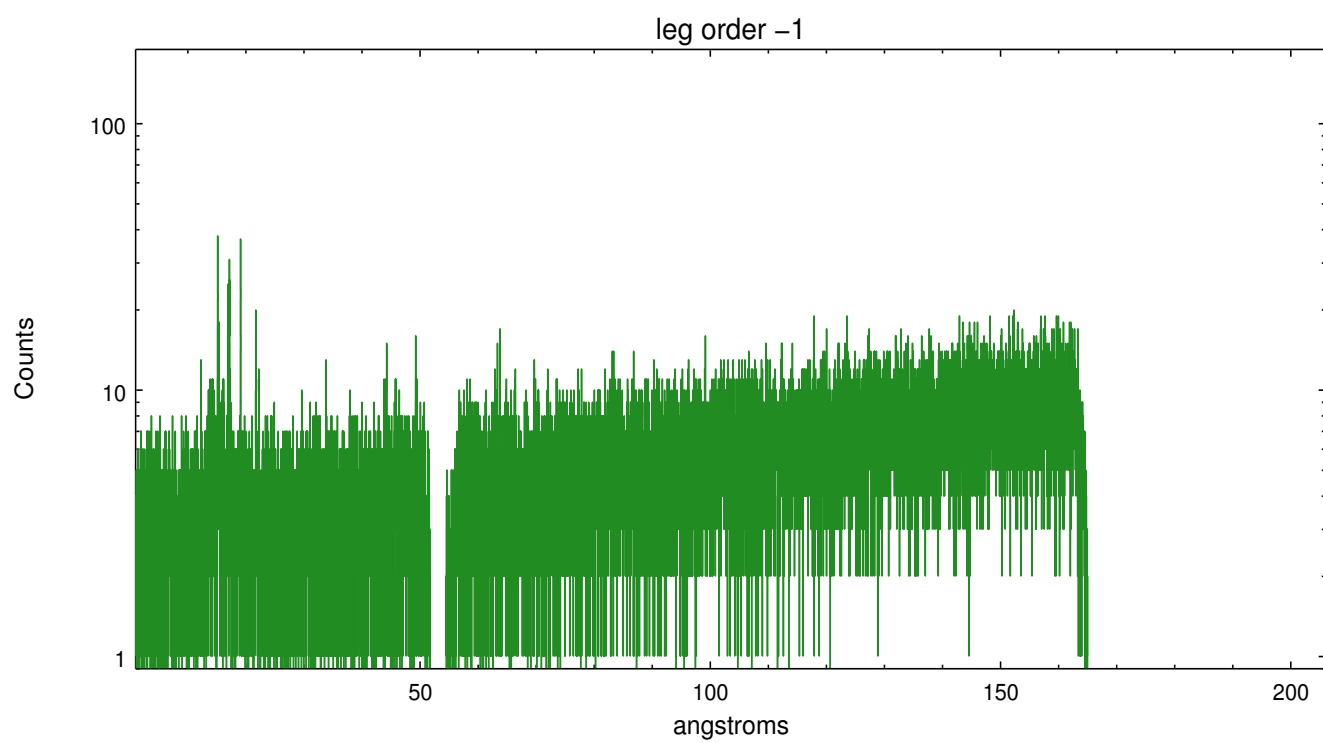


3 Gratings

3.1 LETG Arm



LETG Zero Order



A Summary

A.1 Status

V&V Scientist	Joy Nichols
V&V Date (YYYY-MM-DD)	2013.01.14
V&V Edition	1
V&V Disposition and Status	OK
V&V Charge Time	78.94

A.2 Comments

The data contain 2 spectra. The binary separation is about 5 arcsec in the cross-dispersion direction. Care should be taken to extract the sources separately. In this processing, the zeroth order position for spectral extraction is centered on the star in the northwest position, although standard processing has been used and no attempt has been made to exclude the second star from the background. Dispersed spectra of these 2 stars can be separated

using CIAO tools.

===These are high proper motion stars.