

V&V Reference Report

L2 ASCDS Version : 8.4.5

Observation 4402 - L2 Version 3
Chandra X-Ray Center

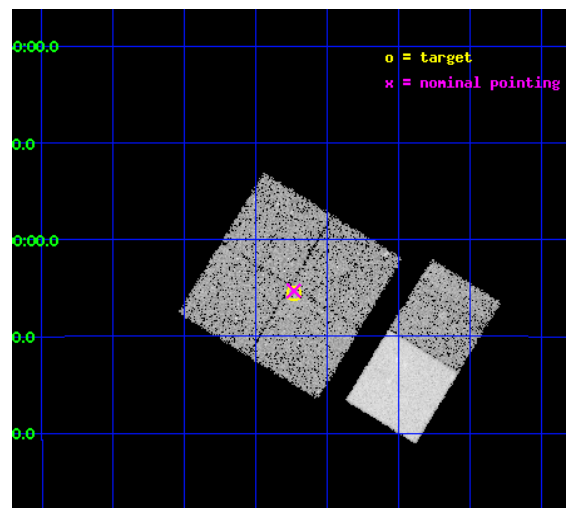
L2 Processing Date : Oct 29 2012

Contents

1	Front	2
2	OBI	3
2.1	OBI	3
2.1.1	Images	3
2.1.2	Bias	3
2.1.3	Parameters	4
2.1.4	Events	4
2.2	Compared Parameters	5
2.3	Aspect	6
2.4	Star Slots	9
2.4.1	Slot 3	9
2.4.2	Slot 4	10
2.4.3	Slot 5	11
2.4.4	Slot 6	12
2.4.5	Slot 7	13
2.5	FID Slots	14
2.5.1	Slot 0	14
2.5.2	Slot 1	15
2.5.3	Slot 2	16
A	Summary	17
A.1	Status	17
A.2	Comments	17

1 Front

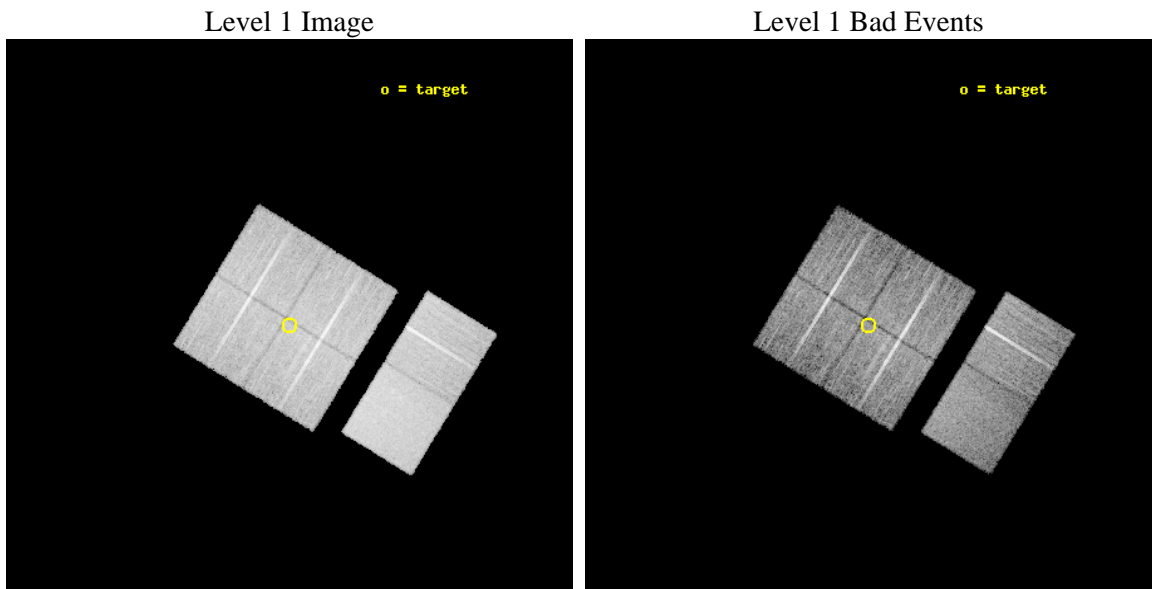
seq_num	700808	Sequence number
obs_id	4402	Observation id
title	TYPE II QUASARS AMONG Z>4 STRONG LYMAN ALPHA SOURCES	Proposal titl
observer	Professor Sangeeta Malhotra	Principal investigator
object	LALA CETUS FIELD/LALA BOOMER	Source name
dtcycle	0	
cycle	P	events from which exps? Prim/Second/Both
ra_targ	31.184362	Observer's specified target RA [deg]
dec_targ	-5.092728	Observer's specified target Dec [deg]
ra_nom	31.183657187164	Nominal RA [deg]
dec_nom	-5.0881463010091	Nominal Dec [deg]
roll_nom	121.57860231819	Nominal Roll [deg]
revision	3	Processing version of data
ontime	15113.558983415	Sum of GTIs [s]
livetime	14922.181999275	Livetime [s]
ontime0	15113.559003323	Sum of GTIs [s]
ontime1	15110.317993224	Sum of GTIs [s]
ontime2	15116.799943686	Sum of GTIs [s]
ontime3	15113.558983415	Sum of GTIs [s]
ontime6	15116.799943686	Sum of GTIs [s]
ontime7	15116.799943686	Sum of GTIs [s]
l2events	101050	Number of level 2 events



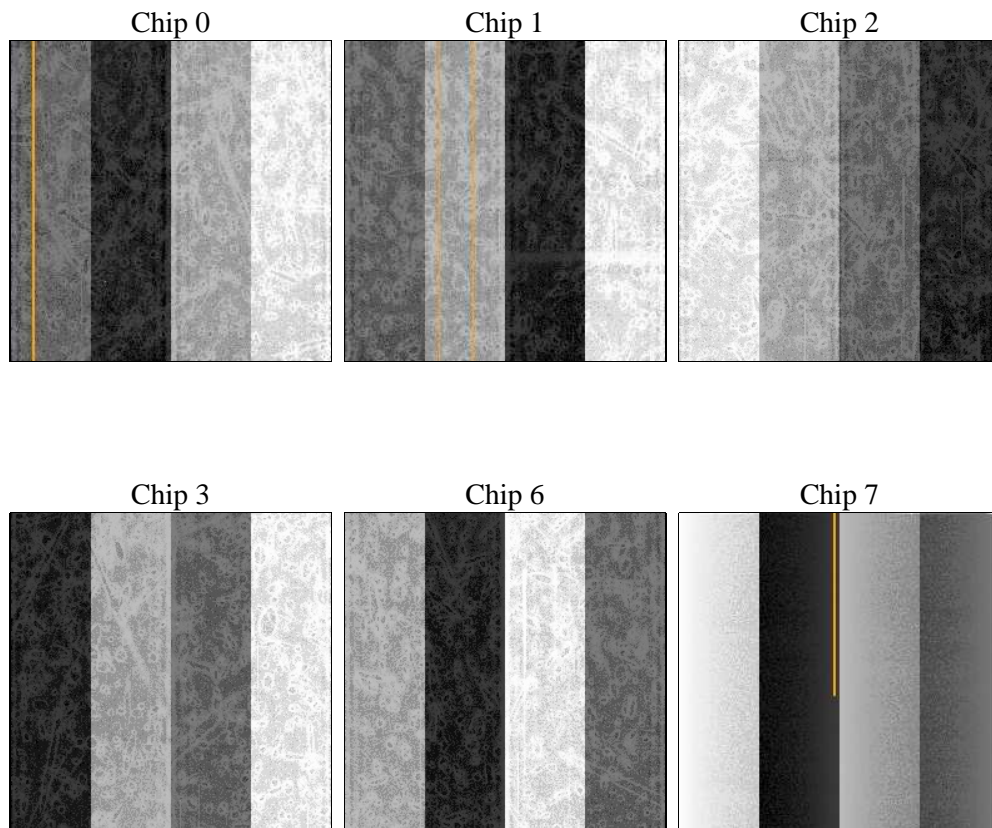
2 OBI

2.1 OBI

2.1.1 Images



2.1.2 Bias



2.1.3 Parameters

obi_num	0	Obi number	sched_exp_time	15000.000000	[s] Scheduled observation exposure time
ascdsver	8.4.5	Processing system revision	ontime	15113.558983415	Sum of GTIs [s]
caldsver	4.5.2	 	ontime0	15113.559003323	Sum of GTIs [s]
date	2012-10-29T18:10:58	Date and time of file creation	ontime1	15110.317993224	Sum of GTIs [s]
revision	3	Processing version of data	ontime2	15116.799943686	Sum of GTIs [s]
			ontime3	15113.558983415	Sum of GTIs [s]
			ontime6	15116.799943686	Sum of GTIs [s]
			ontime7	15116.799943686	Sum of GTIs [s]
			l1events	602255	Number of level 1 events

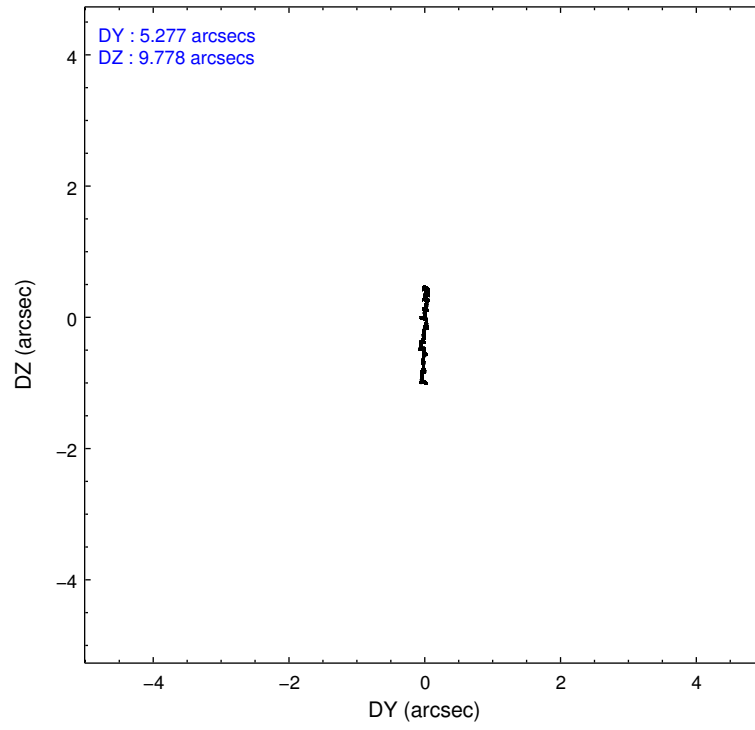
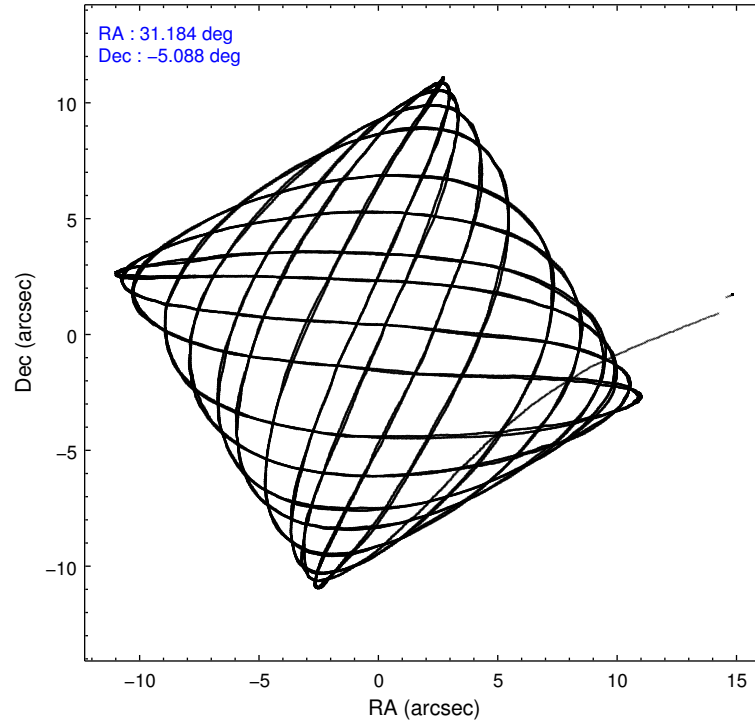
2.1.4 Events

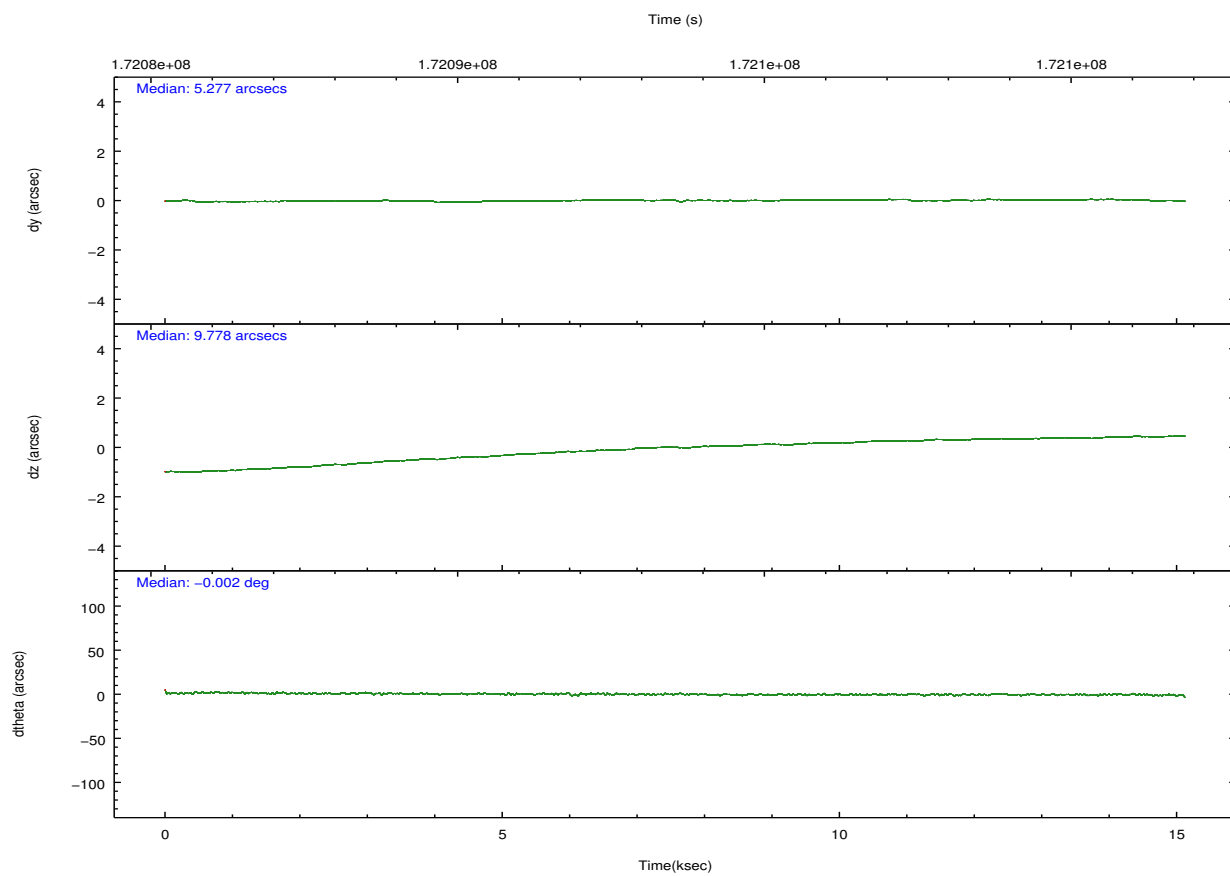
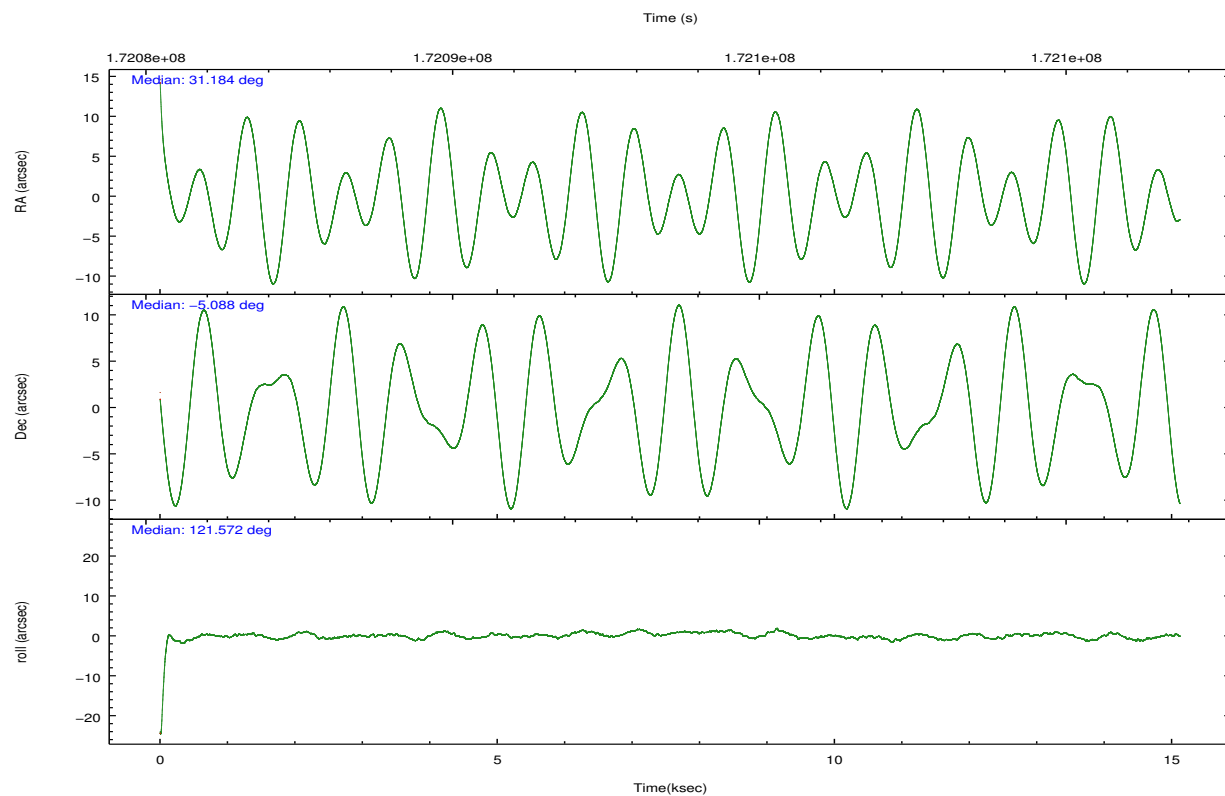
	ccd 0	ccd 1	ccd 2	ccd 3	ccd 6	ccd 7		ccd 0	ccd 1	ccd 2	ccd 3	ccd 6	ccd 7
level 1 events	88603	89279	97129	95092	101645	130507	grade 0 events	5374	5050	5623	5112	4699	5062
rejected events	76903	77233	85546	83800	90329	78068		6%	5%	5%	5%	4%	3%
rejected %	86%	86%	88%	88%	88%	59%	grade 1 events	48	42	65	61	38	138
								0%	0%	0%	0%	0%	0%
							grade 2 events	2470	2544	2250	2252	2461	10658
								2%	2%	2%	2%	2%	8%
							grade 3 events	1134	1220	1129	1095	1104	4752
								1%	1%	1%	1%	1%	3%
							grade 4 events	1118	1250	1078	1143	1120	4738
								1%	1%	1%	1%	1%	3%
							grade 5 events	3910	3918	3764	4316	4484	12625
								4%	4%	3%	4%	4%	9%
							grade 6 events	1958	2315	1823	1997	2263	28679
								2%	2%	1%	2%	2%	21%
							grade 7 events	72591	72940	81397	79116	85476	63855
								81%	81%	83%	83%	84%	48%

2.2 Compared Parameters

Parameter	Planned	Actual	Parameter	Planned	Actual
Instrument	ACIS	ACIS	Obspar format version number	7	7
Detector	ACIS-012367	ACIS-012367	Obspar file type	PREDICTED	ACTUAL
Grating	NONE	NONE	Obspar update status	NONE	UPDATED
Data mode	VFAINT	VFAINT	Number of optional ACIS chips dropped	0	0
Observation mode	POINTING	POINTING	On-chip summing requested	N	N
[deg] Pointing RA	31.207901	31.18365718716379	Subarray requested	NONE	NONE
[deg] Pointing Dec	-5.101079	-5.088146301009103	Alternating exposures requested	N	N
[deg] Pointing Roll	121.372092	121.5786023181931	[s] Primary exposure time	0.000000	3.2
[mm] SIM focus pos	-0.782348	-0.7809083437167272			
[mm] SIM defocus	0	0.001439871863259334			
[mm] SIM translation stage pos	-233.592463	-233.5874344608287			
[mm] SIM translation stage offset	0	-0.005018542100998502			
[s] Observation start time (MET)	172086108.184000	172084856.88327			
Observation start date	2003-06-15T17:40:44	2003-06-15T17:20:56			
[s] Observation end time (MET)	172101108.184000	172101865.73399			
Observation end date	2003-06-15T21:50:44	2003-06-15T22:04:25			
Read mode	TIMED	TIMED			

2.3 Aspect



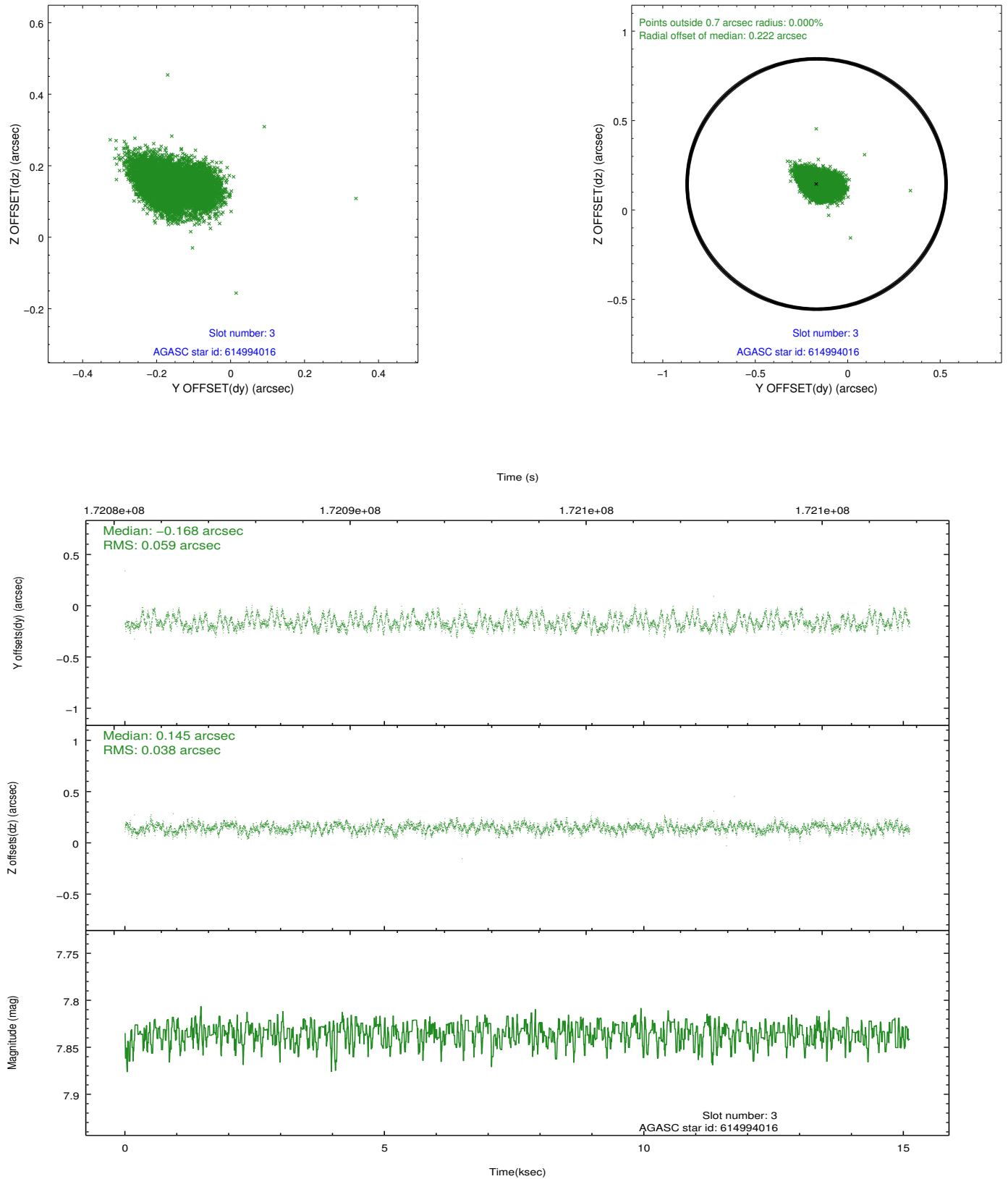


Slot Statistics

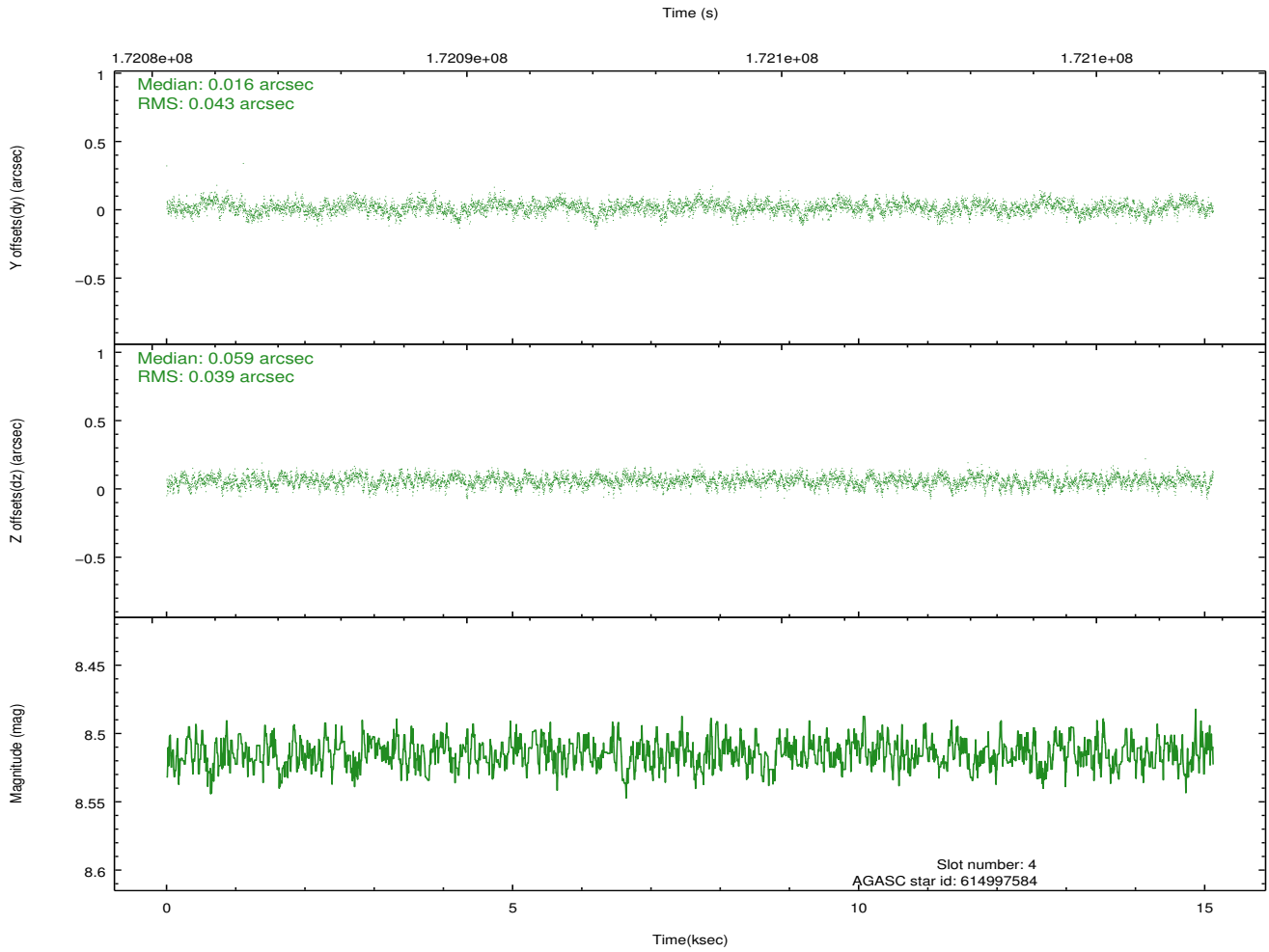
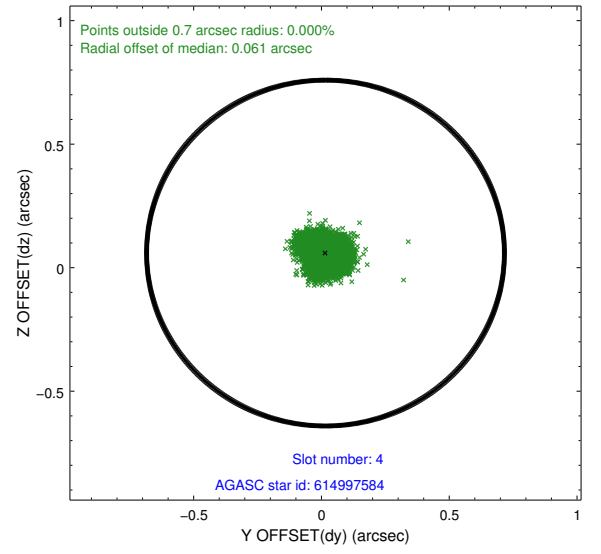
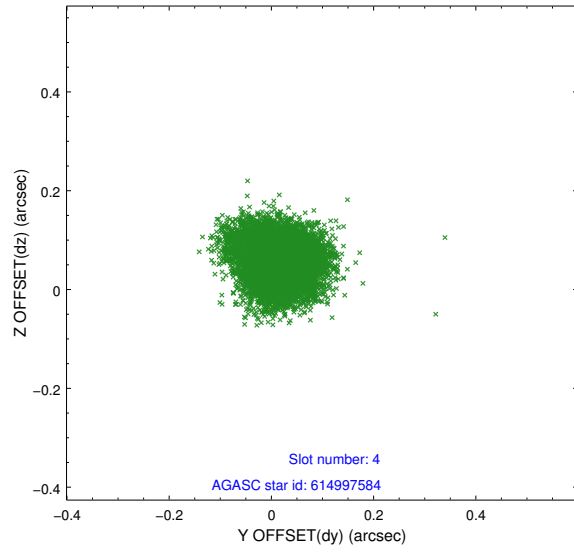
slot	status	id	mag	n_pts	med_dy	med_dz	dr1	dr2	ra	dec	mean_y	mean_z
0	FID	ACIS-I-2	7.14	3688	-0.045	-0.048	0.013	0.022	0.000000	0.000000	-759.76	-839.53
1	FID	ACIS-I-4	7.18	3687	0.061	0.046	0.012	0.022	0.000000	0.000000	2154.26	1066.60
2	FID	ACIS-I-5	7.23	3688	-0.117	0.071	0.015	0.024	0.000000	0.000000	-1813.28	1064.80
3	GUIDE	614994016	7.83	7377	-0.168	0.145	0.074	0.122	31.288878	-4.405036	1988.36	-1552.29
4	GUIDE	614997584	8.52	7377	0.016	0.059	0.062	0.101	30.952492	-4.578768	2082.83	-195.76
5	GUIDE	615390216	7.65	7374	0.249	-0.188	0.051	0.085	31.061043	-5.710942	-1600.11	1591.74
6	GUIDE	614996368	9.53	7372	-0.124	-0.163	0.104	0.168	30.800475	-4.593523	2320.73	297.69
7	GUIDE	614998344	7.61	7376	0.022	0.146	0.076	0.118	31.560945	-4.365038	1603.36	-2460.77

2.4 Star Slots

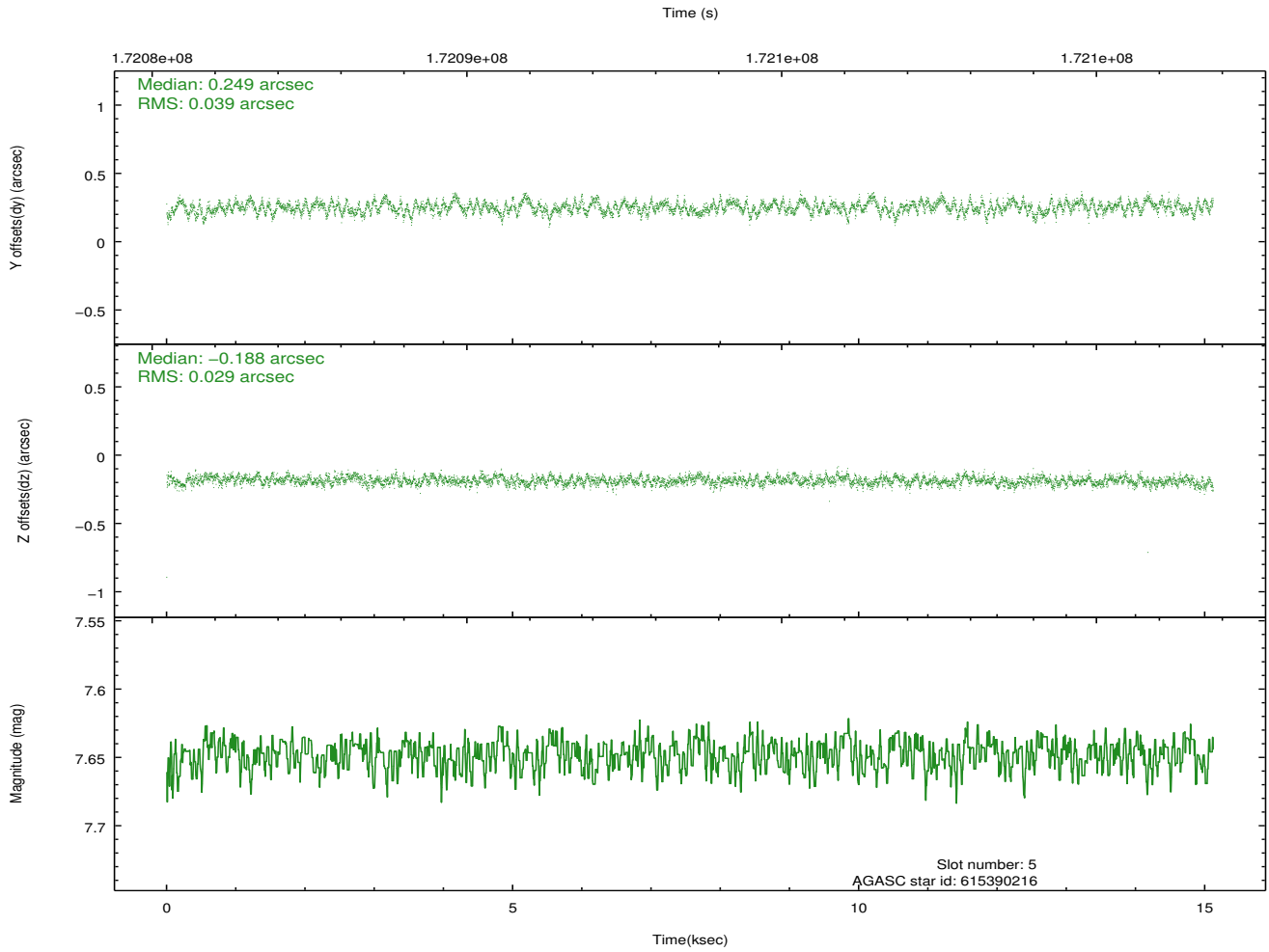
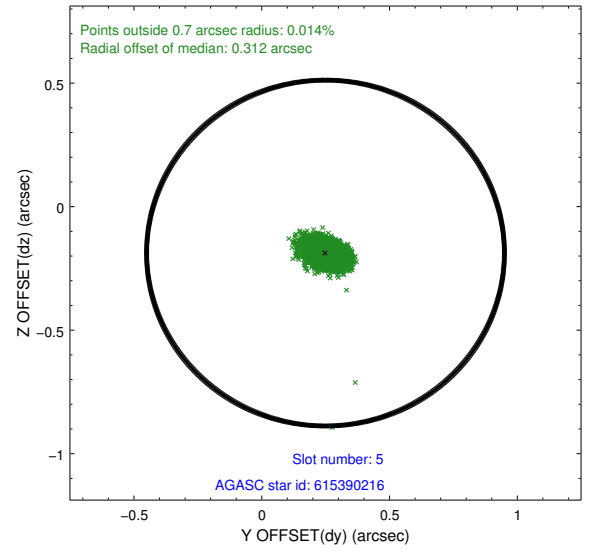
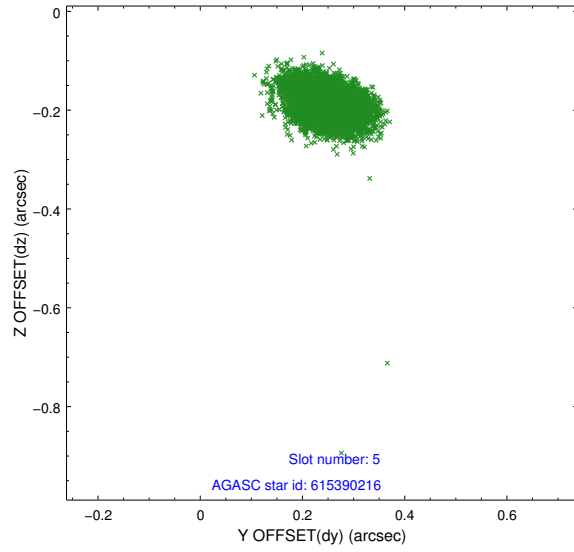
2.4.1 Slot 3



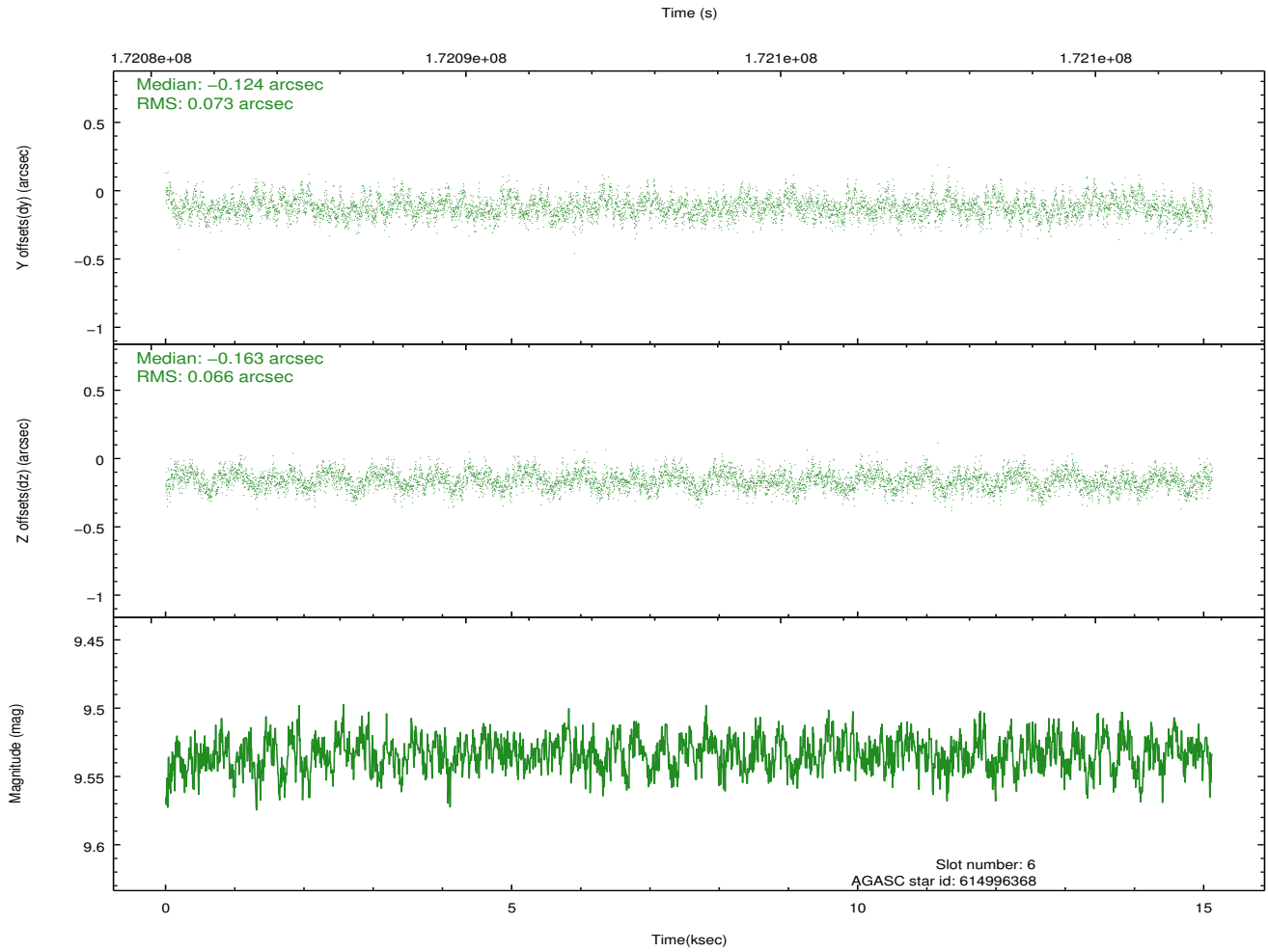
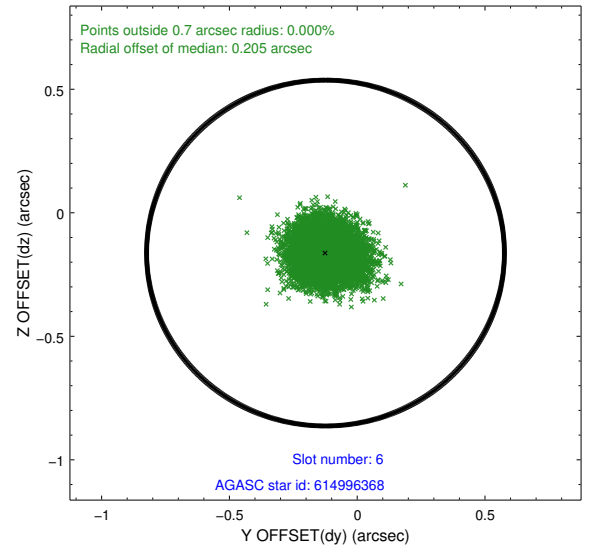
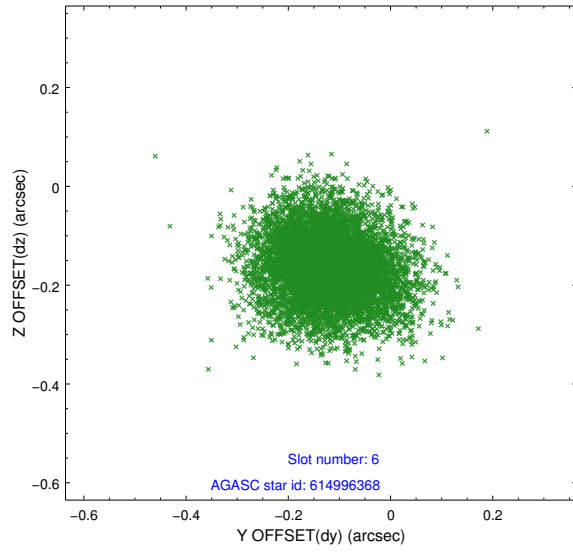
2.4.2 Slot 4



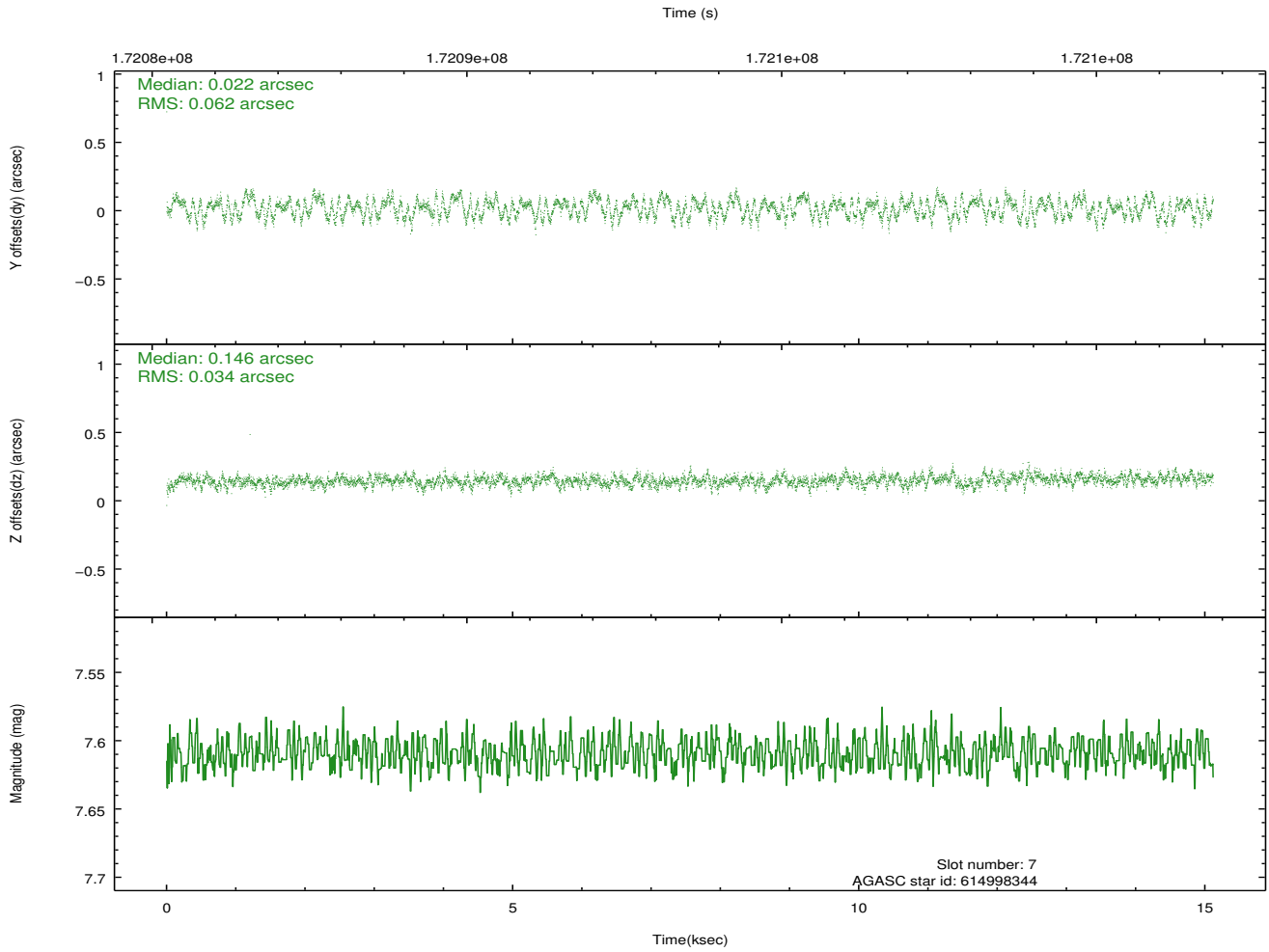
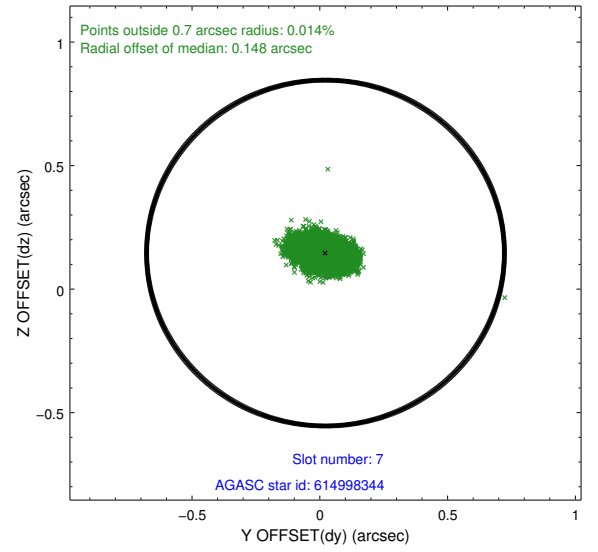
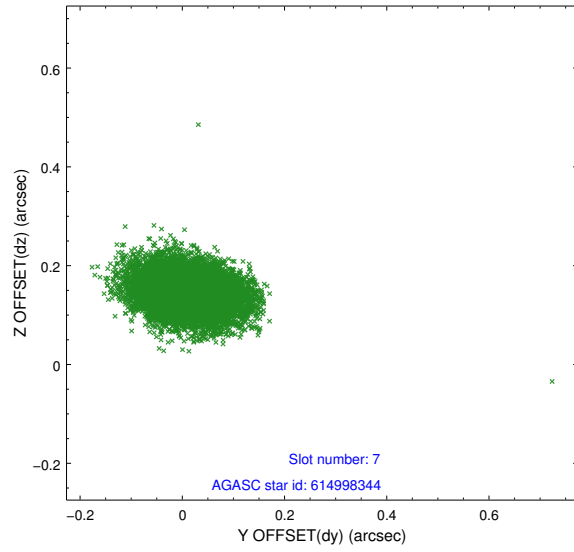
2.4.3 Slot 5



2.4.4 Slot 6

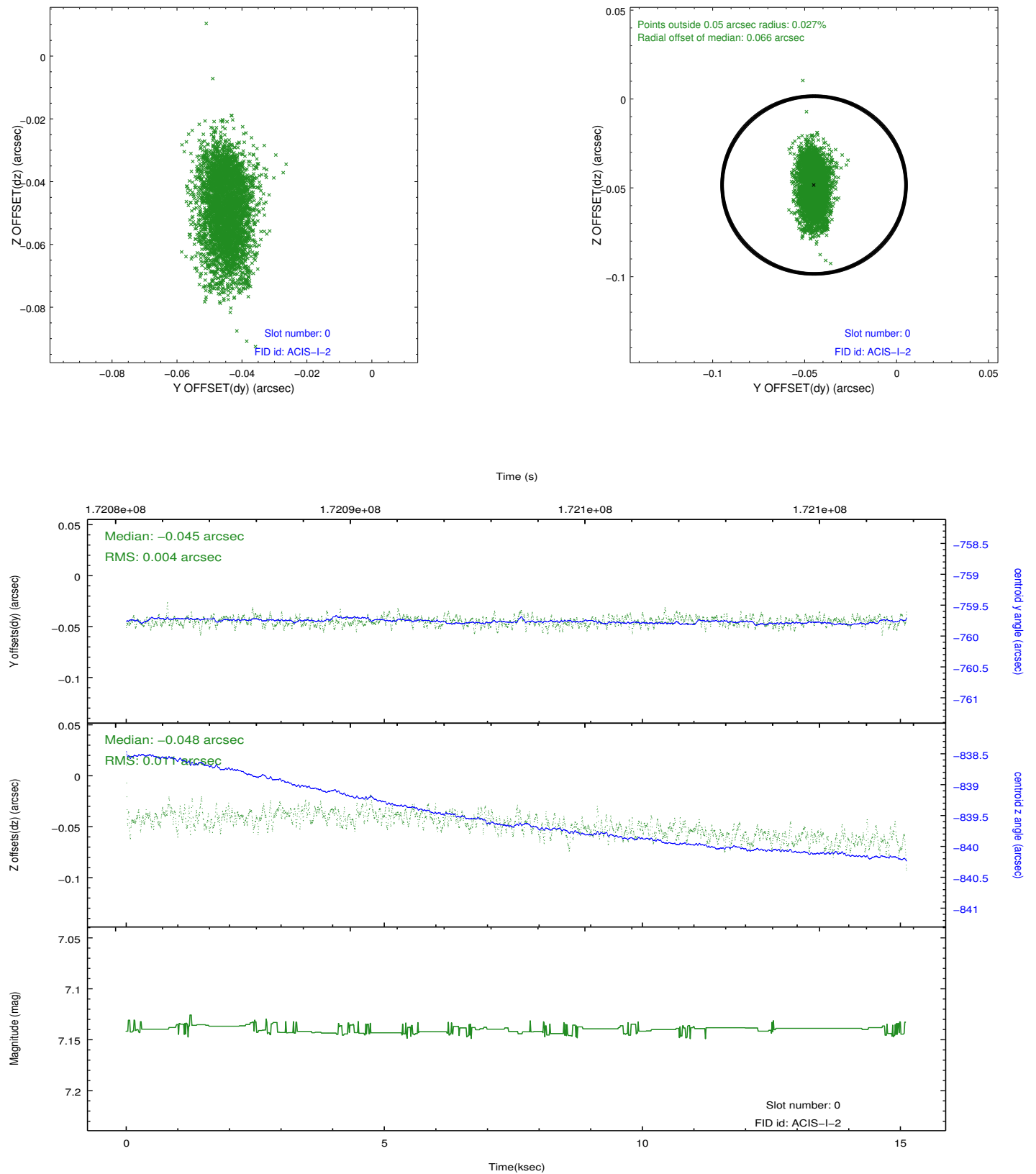


2.4.5 Slot 7

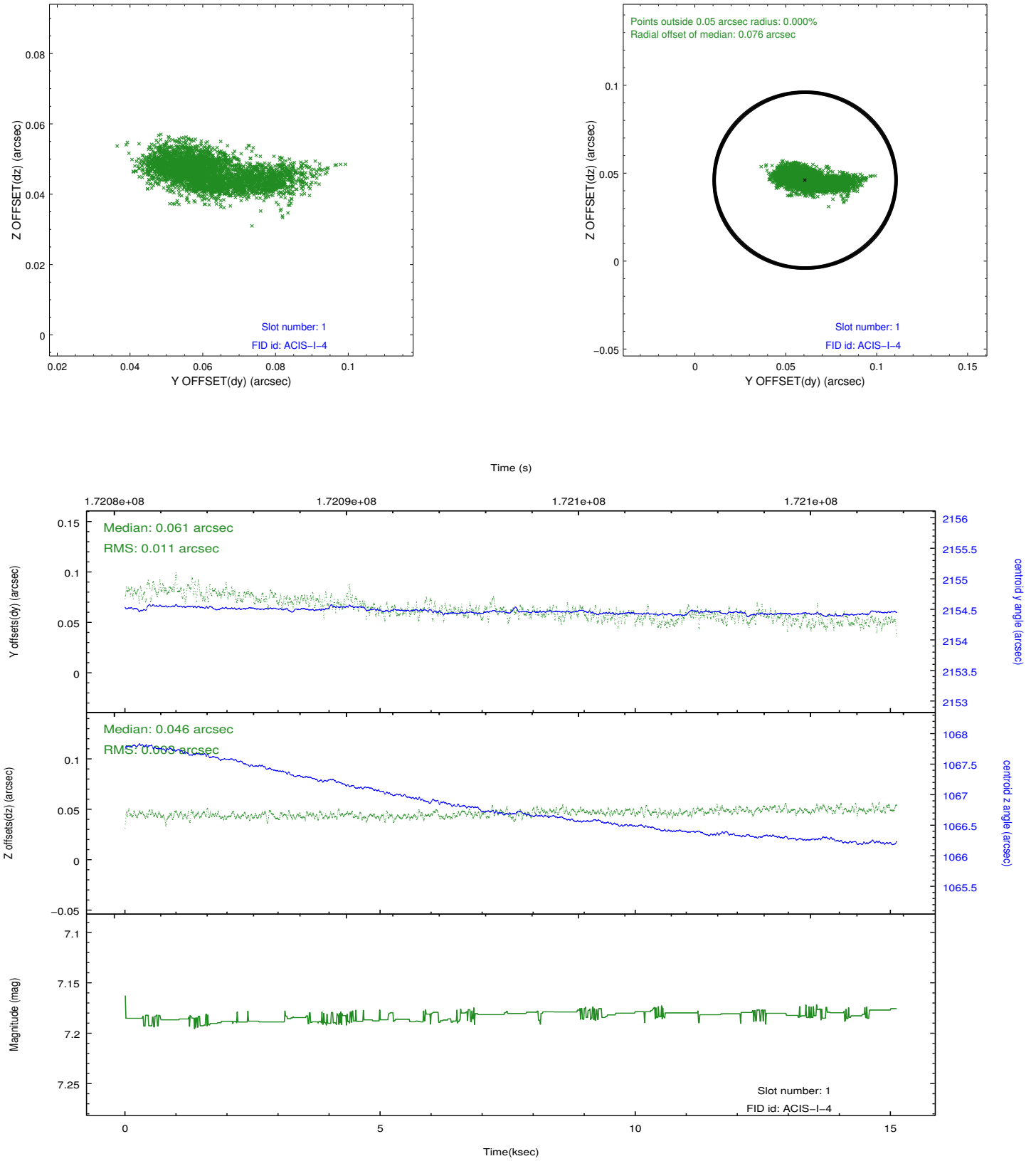


2.5 FID Slots

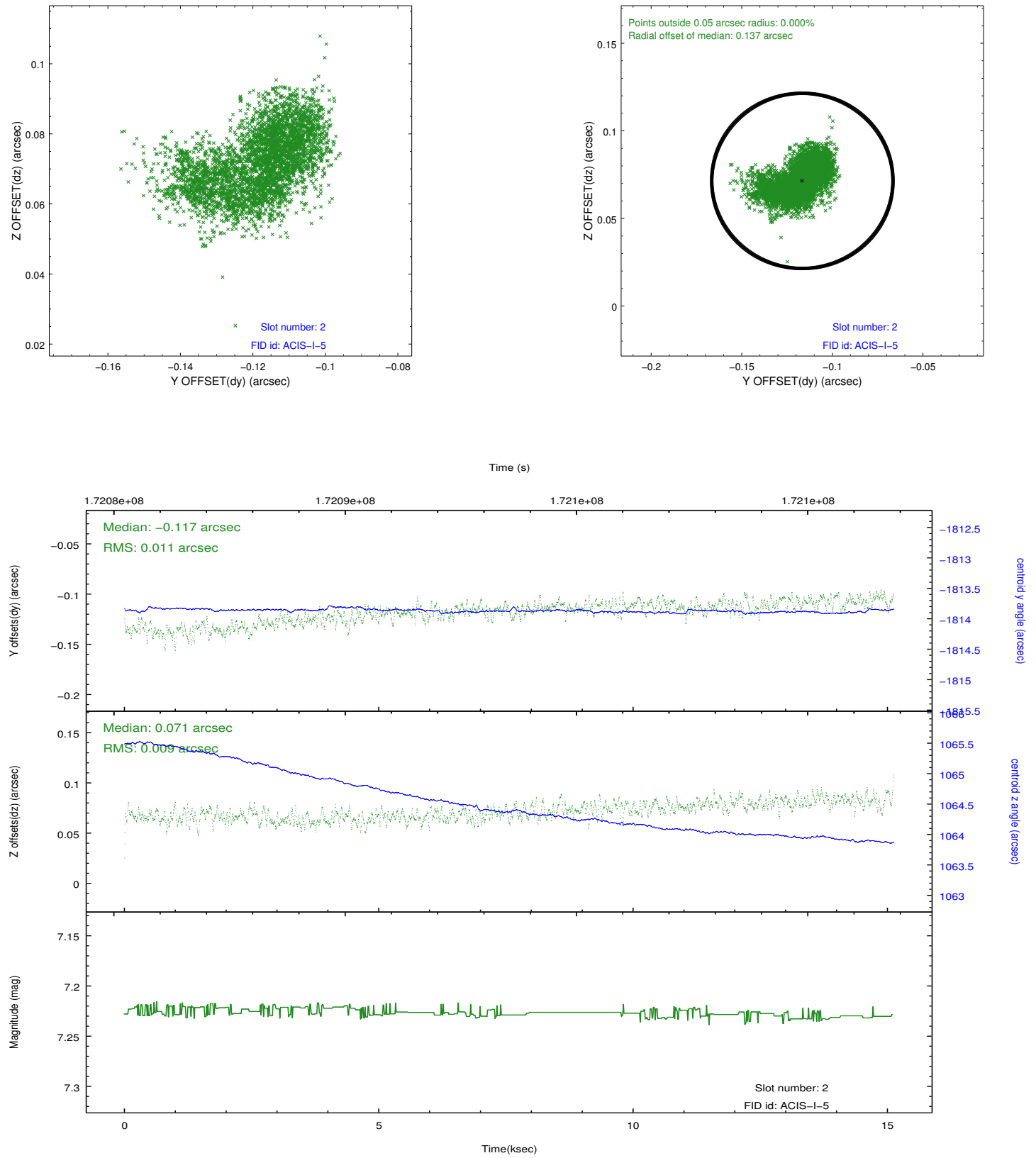
2.5.1 Slot 0



2.5.2 Slot 1



2.5.3 Slot 2



A Summary

A.1 Status

V&V Scientist	Beth Sundheim
V&V Date (YYYY-MM-DD)	2012.11.15
V&V Edition	1
V&V Disposition and Status	OK
V&V Charge Time	15.113

A.2 Comments