

V&V Reference Report

L2 ASCDS Version : 7.6.8

Observation 4172 - L2 Version 001
Chandra X-Ray Center

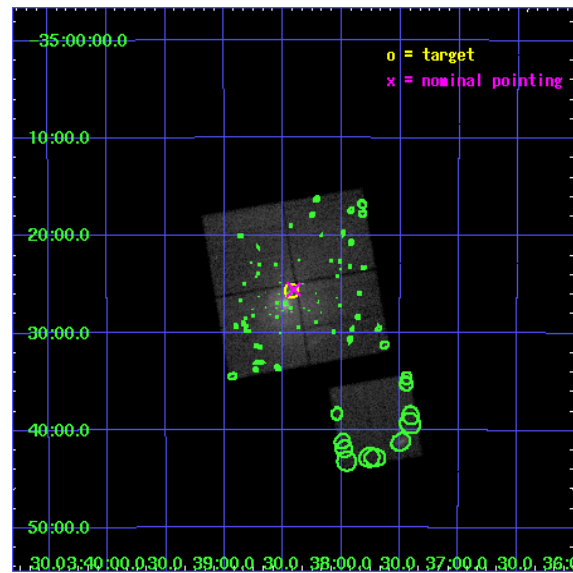
L2 Processing Date : Aug 3 2006

Contents

1	Front	2
2	OBI	3
2.1	OBI	3
2.1.1	Images	3
2.1.2	Bias	3
2.1.3	Parameters	4
2.1.4	Events	4
2.2	Compared Parameters	5
2.3	Aspect	6
2.4	Star Slots	9
2.4.1	Slot 3	9
2.4.2	Slot 4	10
2.4.3	Slot 5	11
2.4.4	Slot 6	12
2.4.5	Slot 7	13
2.5	FID Slots	14
2.5.1	Slot 0	14
2.5.2	Slot 1	15
2.5.3	Slot 2	16
3	Point Sources	17
A	Summary	18
A.1	Status	18
A.2	Comments	18

1 Front

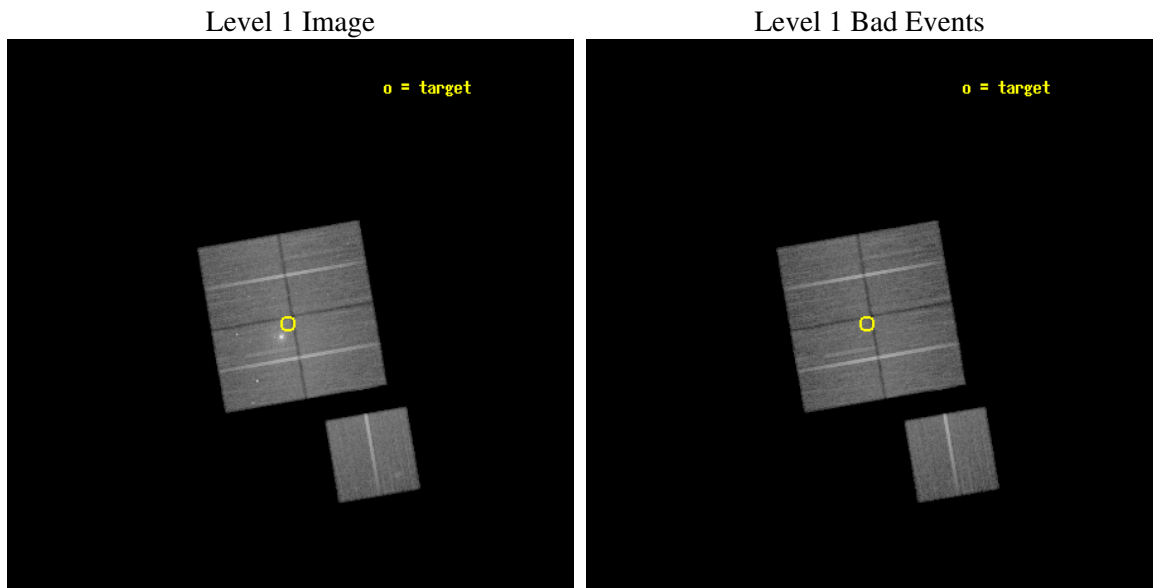
seq_num	800328
obs_id	4172
title	SURVEYING THE FORNAX CLUSTER OF GALAXIES
observer	Dr Caleb Scharf
object	FORNAX CLUSTER
dtcycle	0
cycle	P
ra_targ	54.6065
dec_targ	-35.4285
ra_nom	54.601738633276
dec_nom	-35.425986300561
roll_nom	170.20592390744
revision	2
ontime	45092.313141644
livedtime	44503.14887397
ontime0	45092.313062042
ontime1	45095.45415175
ontime2	45079.749320775
ontime3	45092.313141644
ontime6	45092.31318146
l2events	221872



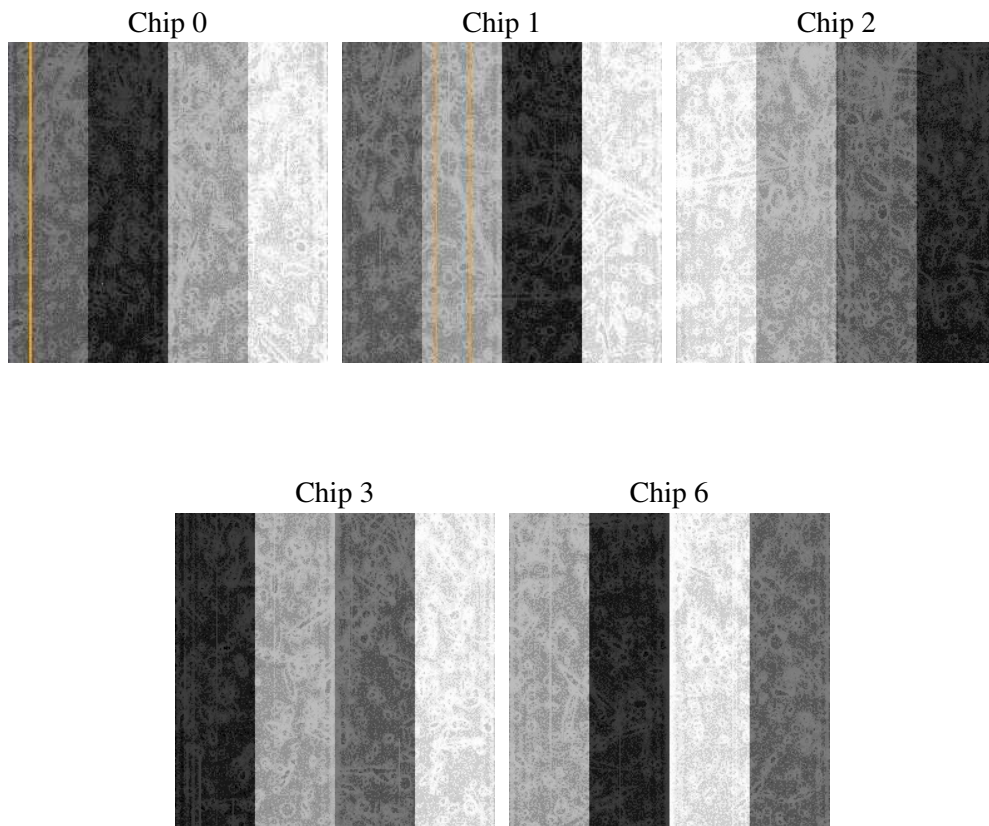
2 OBI

2.1 OBI

2.1.1 Images



2.1.2 Bias



2.1.3 Parameters

obi_num	0
ascdsver	7.6.8
caldbver	3.2.2
date	2006-08-03T03:40:32
revision	2

sched_exp_time	45000.000000
ontime	47033.349783719
ontime0	47033.349684209
ontime1	47033.349803656
ontime2	47020.785942942
ontime3	47033.349783719
ontime6	47033.349803627
l1events	1377389

2.1.4 Events

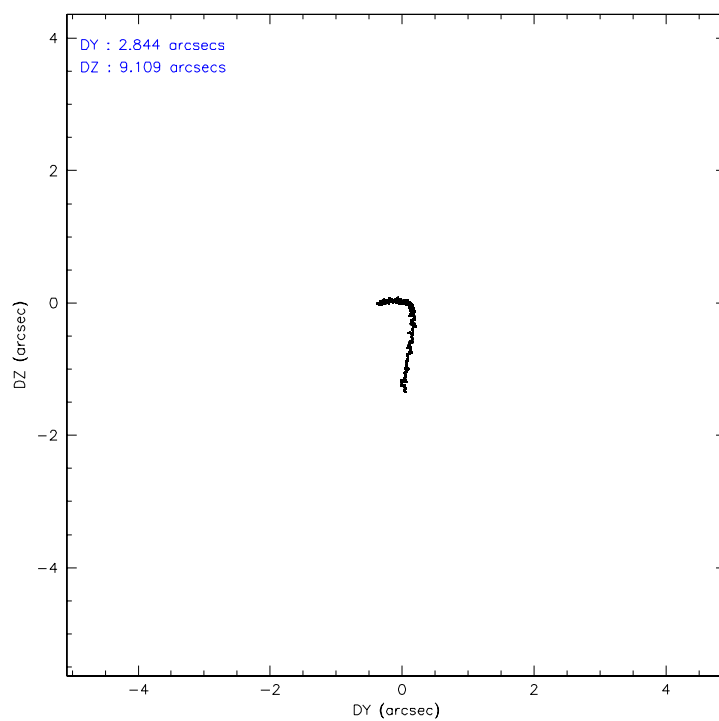
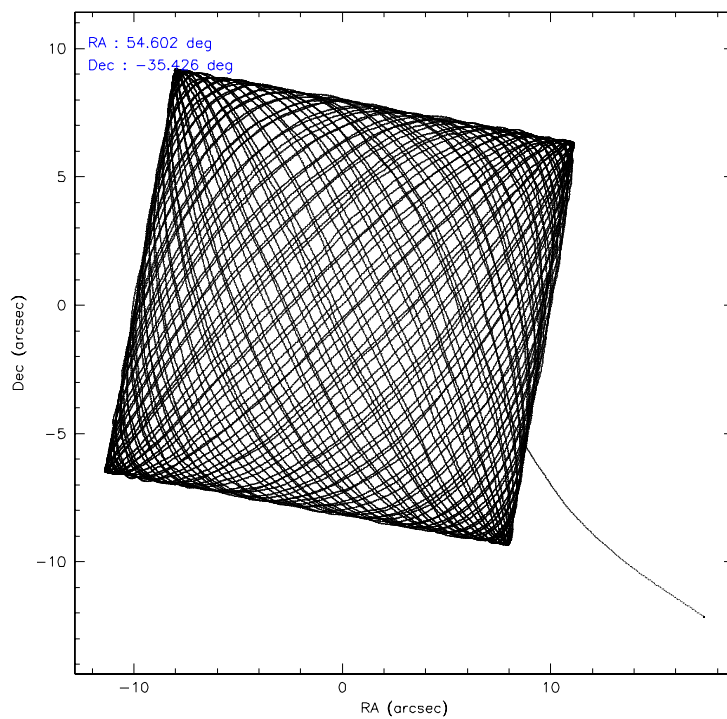
	ccd 0	ccd 1	ccd 2	ccd 3	ccd 6
level 1 events	256430	258113	288557	318179	256110
rejected events	212677	212316	241139	237707	225538
rejected %	82%	82%	83%	74%	88%

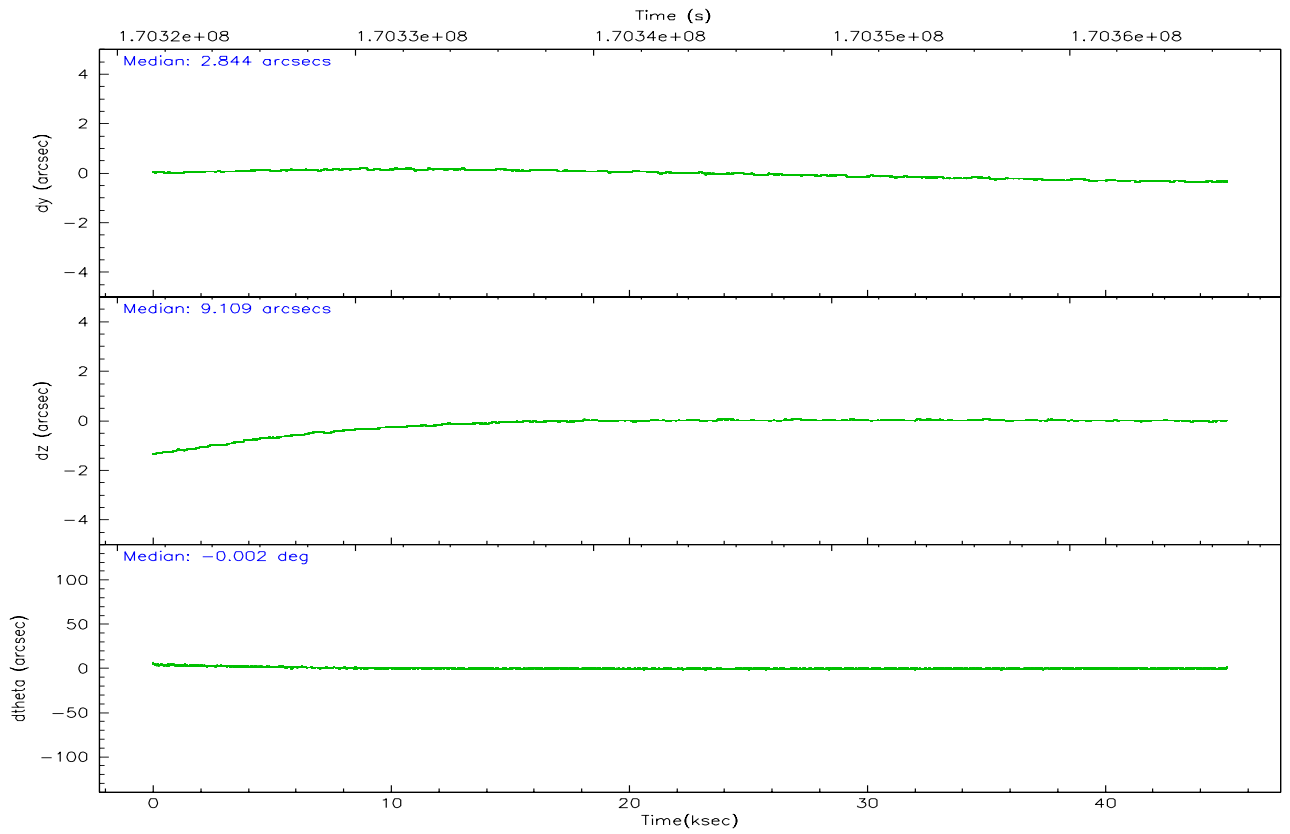
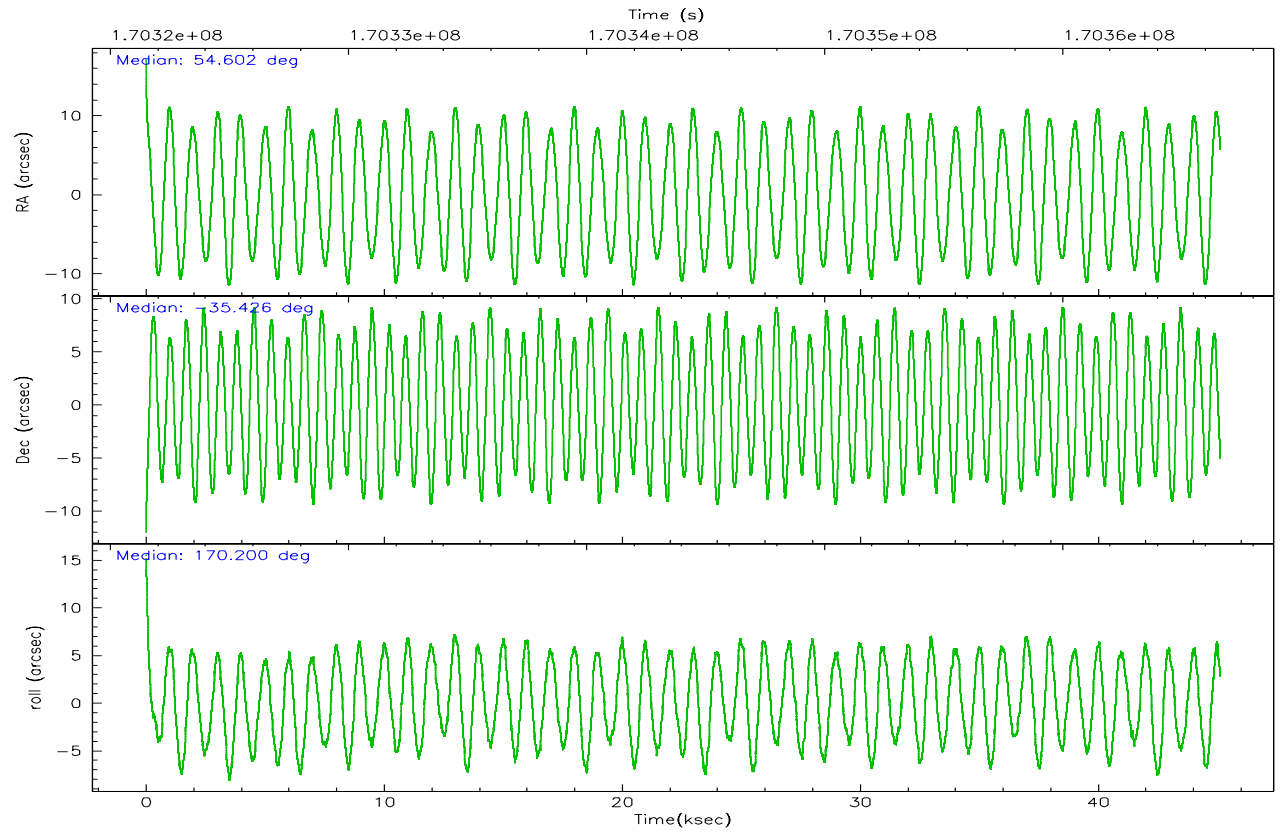
	ccd 0	ccd 1	ccd 2	ccd 3	ccd 6
grade 0 events	25736	26520	29723	58679	14194
	10%	10%	10%	18%	5%
grade 1 events	186	166	246	358	123
	0%	0%	0%	0%	0%
grade 2 events	7436	7586	7711	9561	5806
	2%	2%	2%	3%	2%
grade 3 events	3475	3660	3217	4078	3151
	1%	1%	1%	1%	1%
grade 4 events	3163	3575	3211	4064	3043
	1%	1%	1%	1%	1%
grade 5 events	8684	9482	8270	10099	9791
	3%	3%	2%	3%	3%
grade 6 events	5041	5755	4726	5339	5469
	1%	2%	1%	1%	2%
grade 7 events	202709	201369	231453	226001	214533
	79%	78%	80%	71%	83%

2.2 Compared Parameters

Parameter	Planned	Actual	Parameter	Planned	Actual
Instrument	ACIS	ACIS	Obspar format version number	6	6
Detector	ACIS-01236	ACIS-01236	Obspar file type	PREDICTED	ACTUAL
Grating	NONE	NONE	Obspar update status	NONE	UPDATED
Data mode	VFAINT	VFAINT	On-chip summing requested	N	N
Observation mode	POINTING	POINTING	Subarray requested	NONE	NONE
Pointing RA	54.633203	54.60173863327609	Alternating exposures requested	N	N
Pointing Dec	-35.416429	-35.4259863005609	Primary exposure time	0.000000	3.1
Pointing Roll	170.015475	170.205923907445			
SIM focus pos (mm)	-0.782348	-0.7809083437167272			
SIM defocus (mm)	0	0.001439871863259334			
SIM translation stage pos (mm)	-233.592463	-233.5874344608287			
SIM translation stage offset (mm)	0	-0.005018542100998502			
Observation start time	170321619.184000	170319562.34585			
Observation start date	2003-05-26T07:32:35	2003-05-26T06:59:22			
Observation end time	170366619.184000	170366753.86035			
Observation end date	2003-05-26T20:02:35	2003-05-26T20:05:53			
Read mode	TIMED	TIMED			

2.3 Aspect



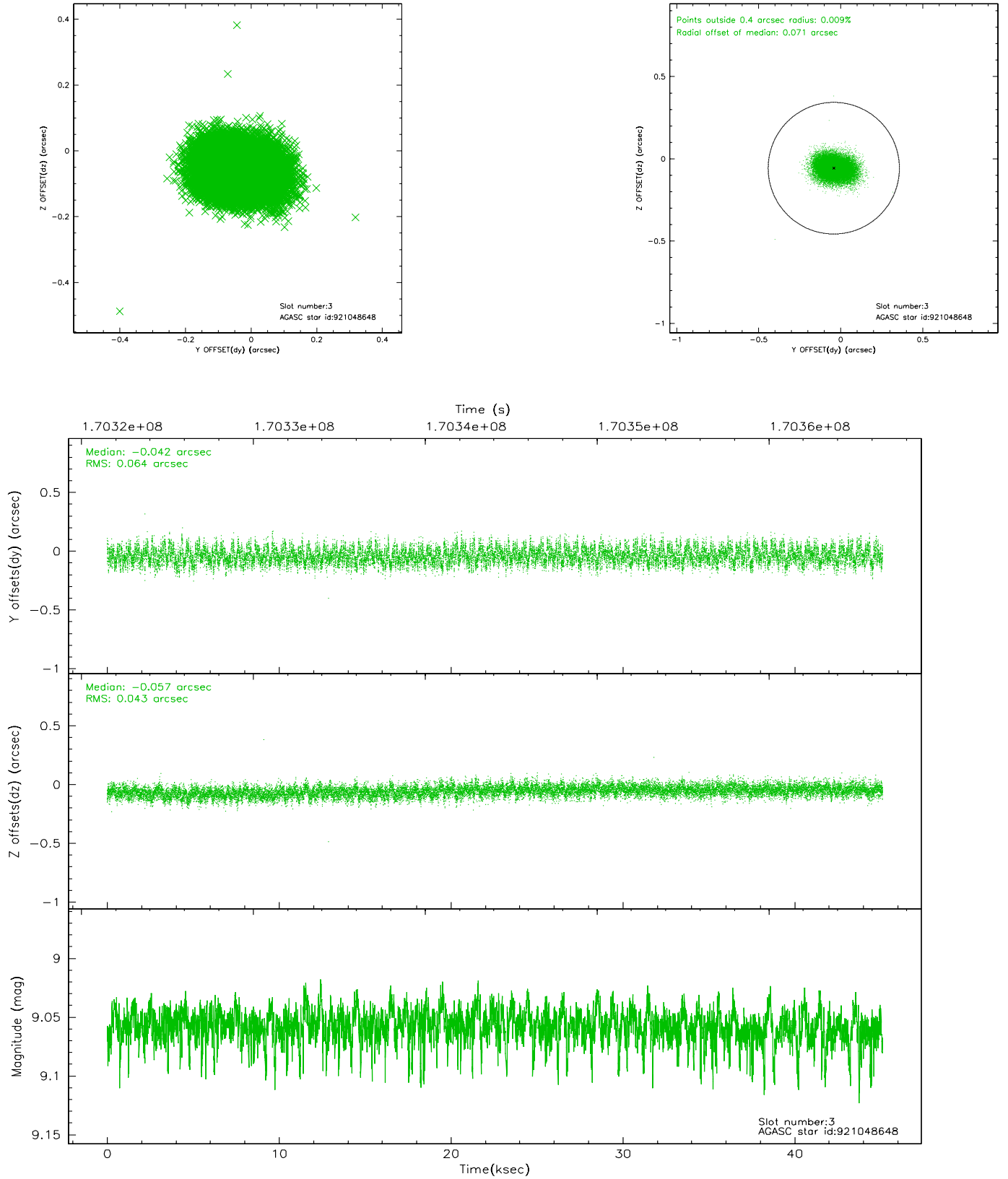


Slot Statistics

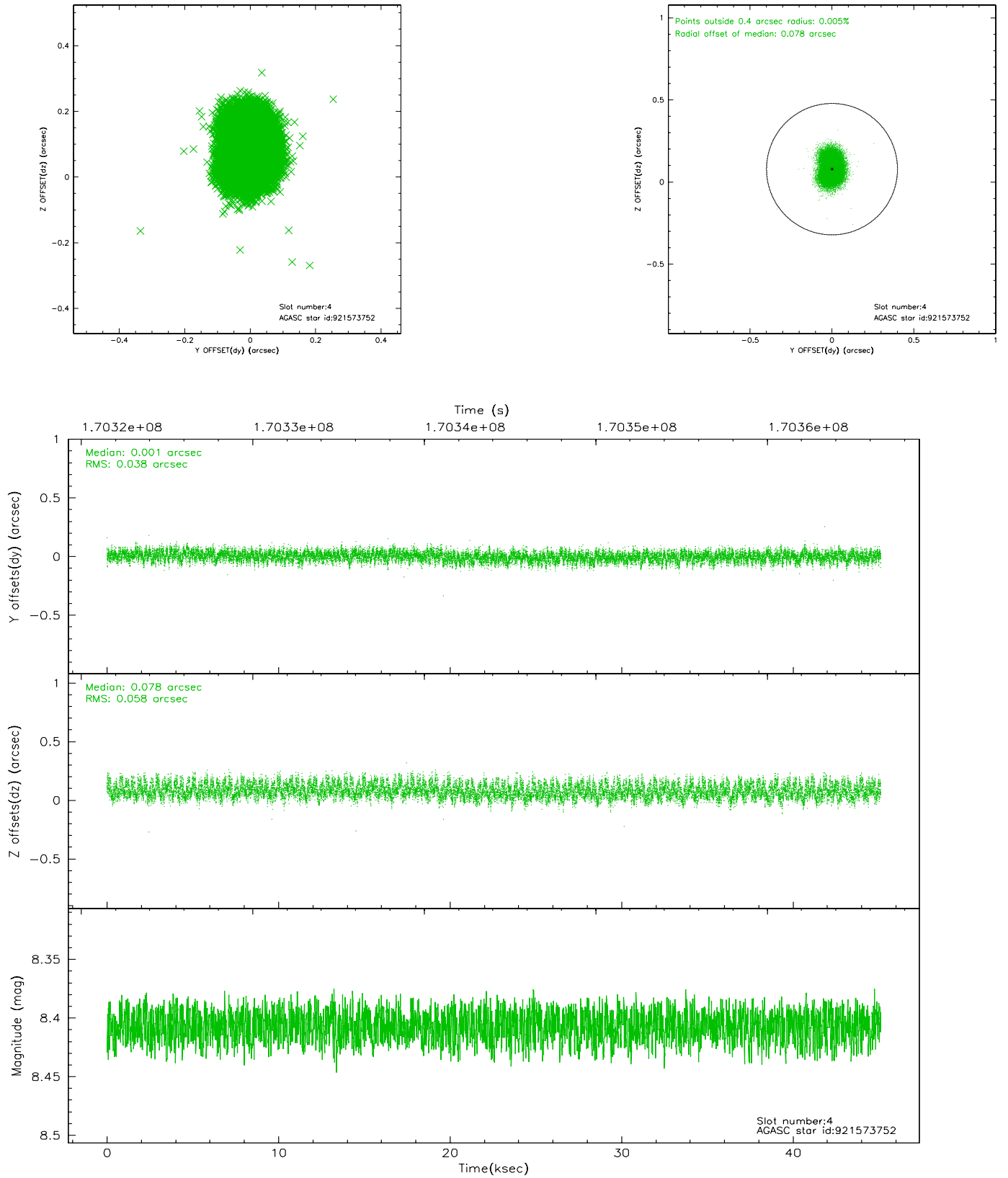
slot	status	id	mag	n_pts	med_dy	med_dz	dr1	dr2	ra	dec	mean_y	mean_z
0	FID	ACIS-I-1	7.24	10989	-0.042	0.081	0.011	0.022	0.000000	0.000000	936.96	-832.30
1	FID	ACIS-I-5	7.23	10988	-0.051	0.018	0.010	0.023	0.000000	0.000000	-1811.17	1065.11
2	FID	ACIS-I-6	7.25	10989	0.003	-0.029	0.013	0.027	0.000000	0.000000	402.53	1709.57
3	GUIDE	921048648	9.06	21982	-0.042	-0.057	0.082	0.133	53.884610	-35.870023	1866.09	1995.26
4	GUIDE	921573752	8.41	21988	0.001	0.078	0.074	0.118	55.297577	-34.906150	-1614.02	-2142.62
5	GUIDE	921965624	8.63	21979	0.054	-0.111	0.071	0.114	54.900706	-35.940077	-1095.03	1722.35
6	GUIDE	921572720	8.74	21978	-0.025	0.116	0.074	0.122	54.127171	-34.789534	1864.39	-1958.93
7	GUIDE	921970112	9.57	21962	0.013	-0.030	0.092	0.154	54.291262	-35.695592	810.13	1165.01

2.4 Star Slots

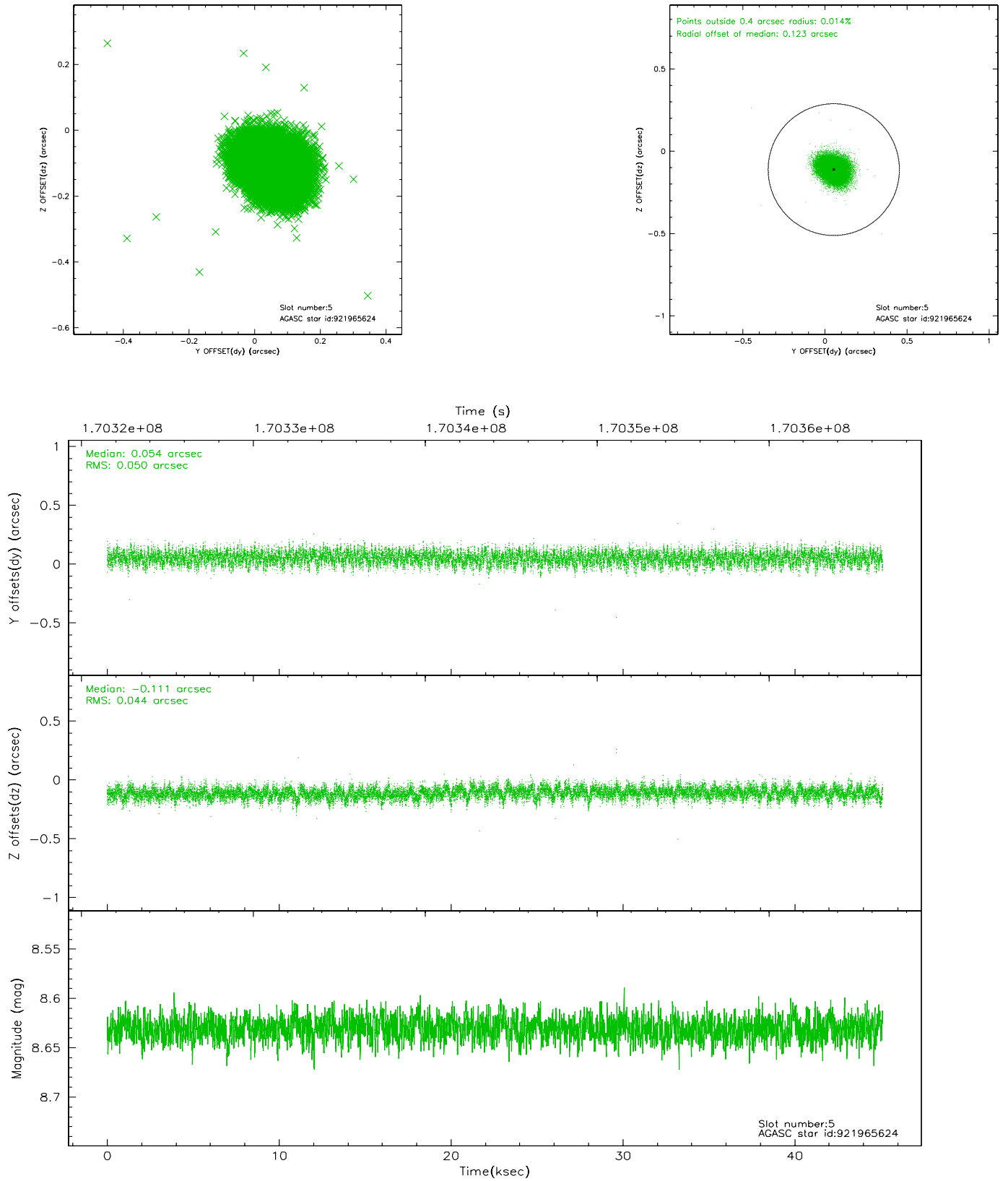
2.4.1 Slot 3



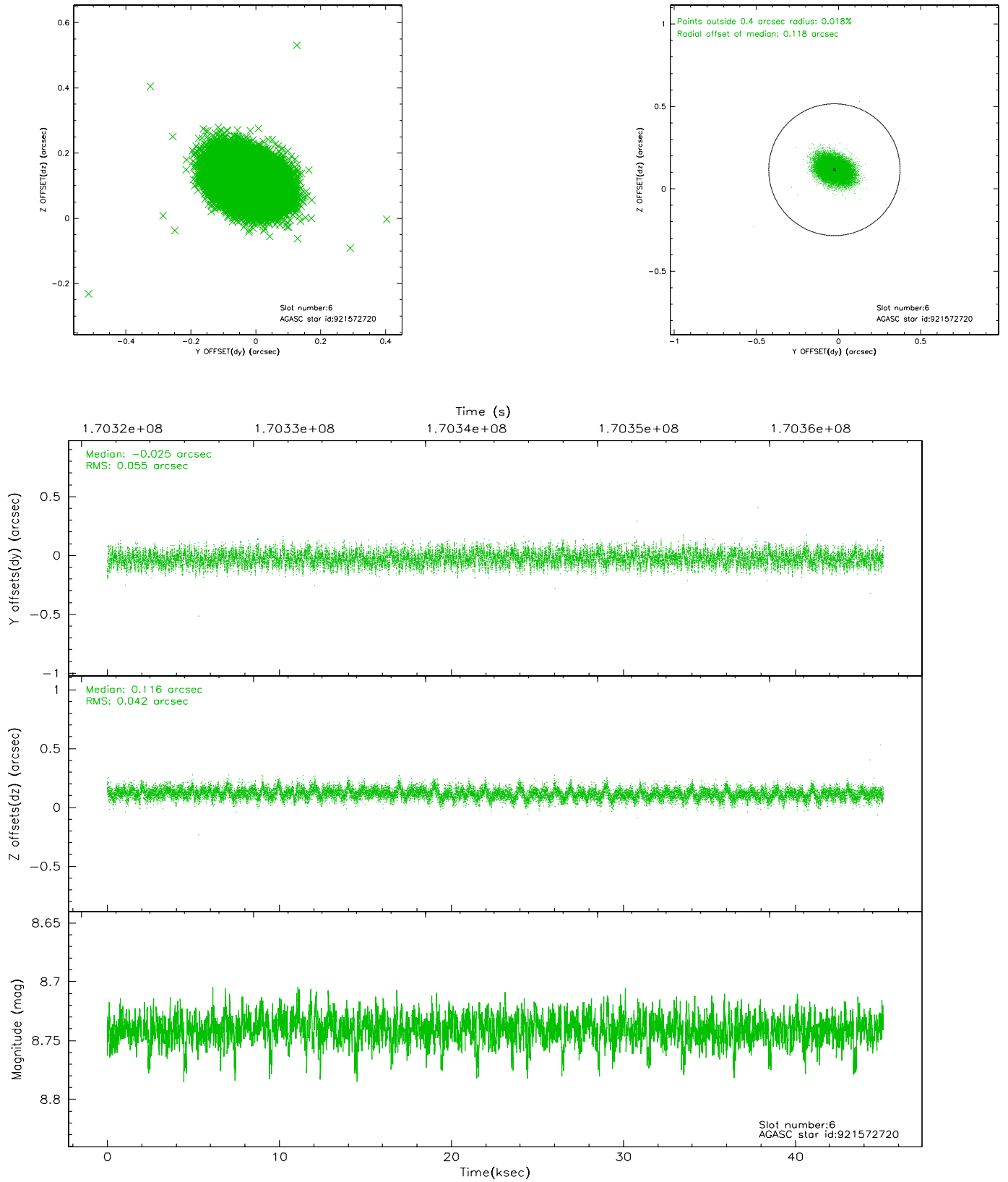
2.4.2 Slot 4



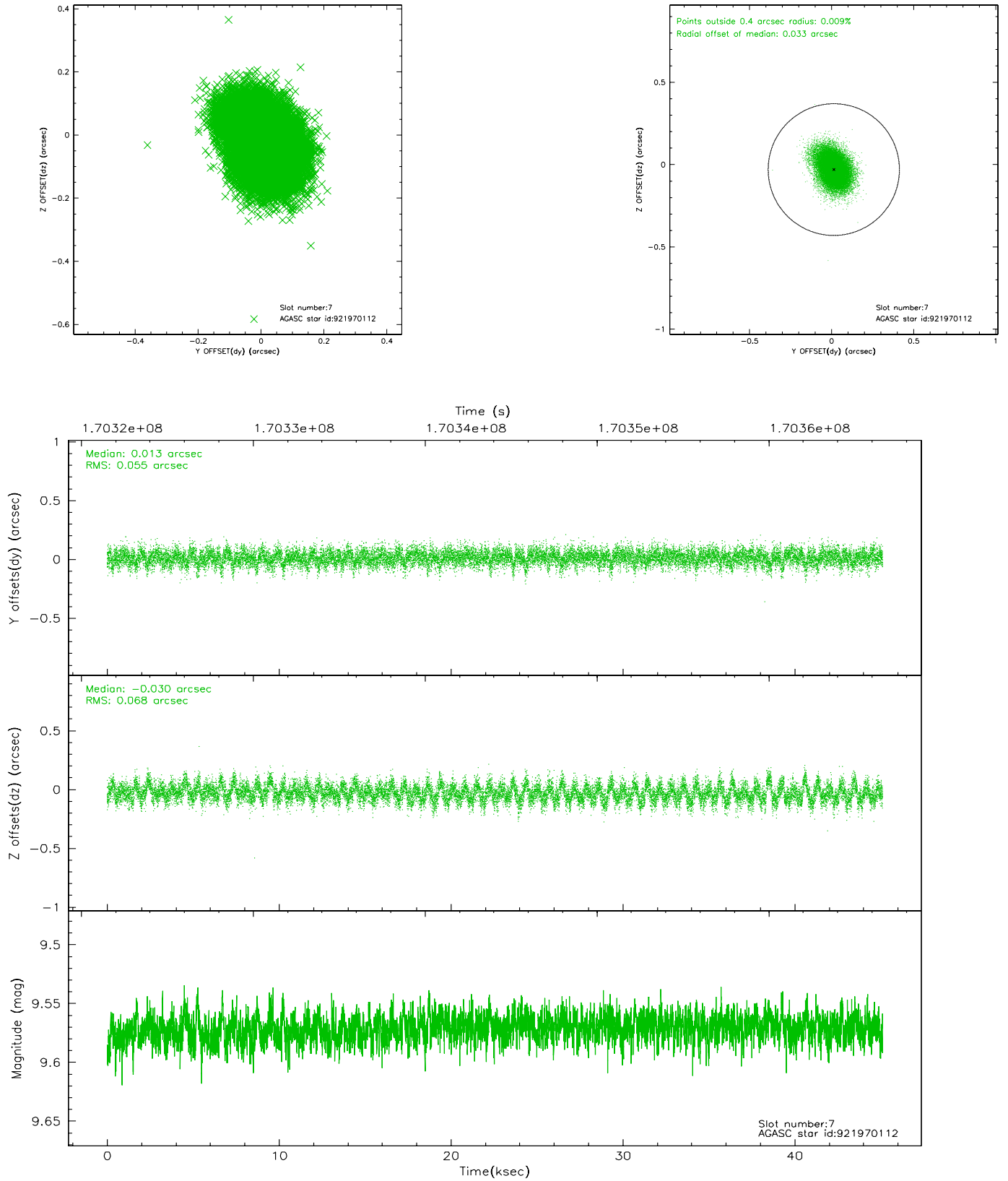
2.4.3 Slot 5



2.4.4 Slot 6

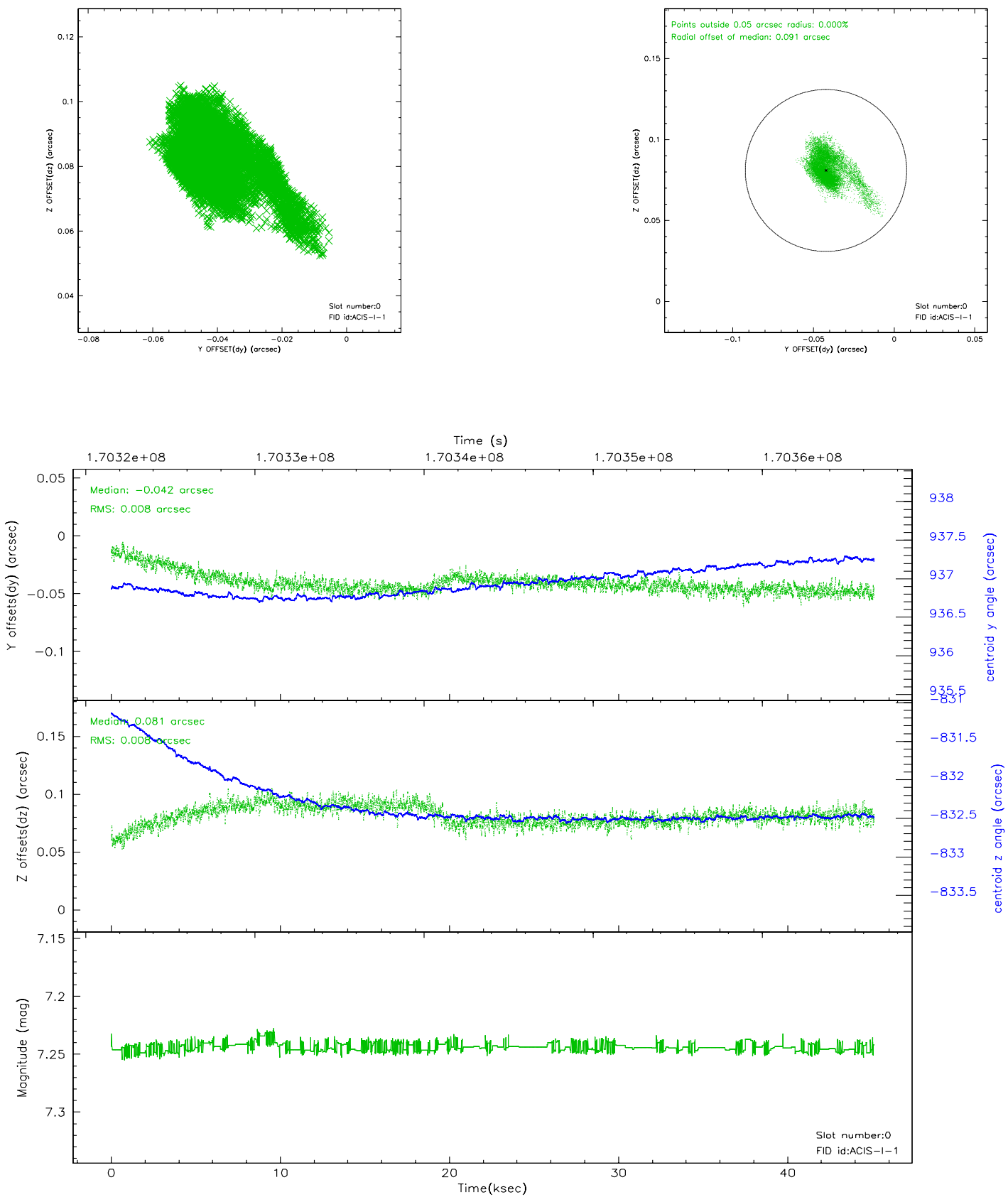


2.4.5 Slot 7

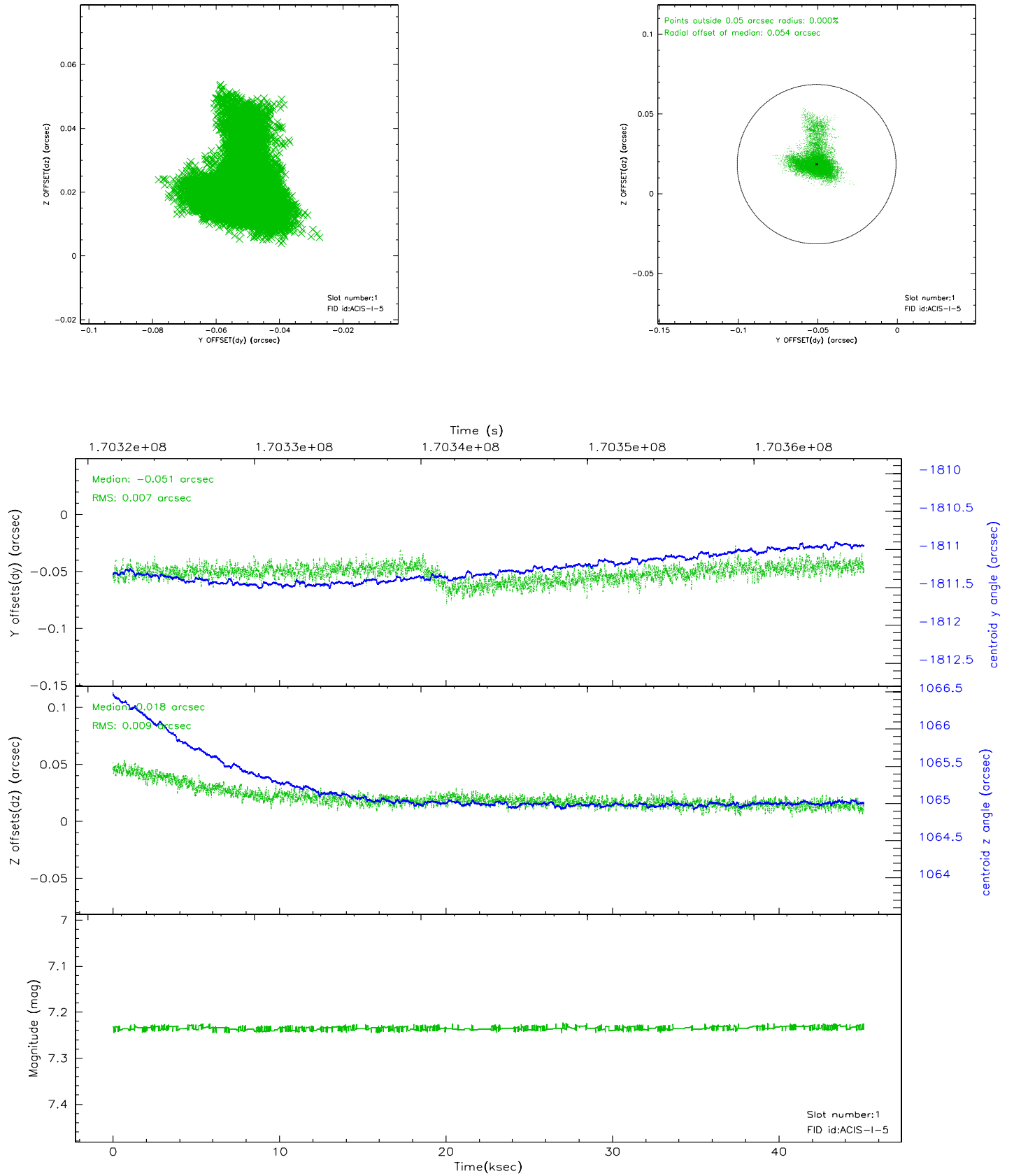


2.5 FID Slots

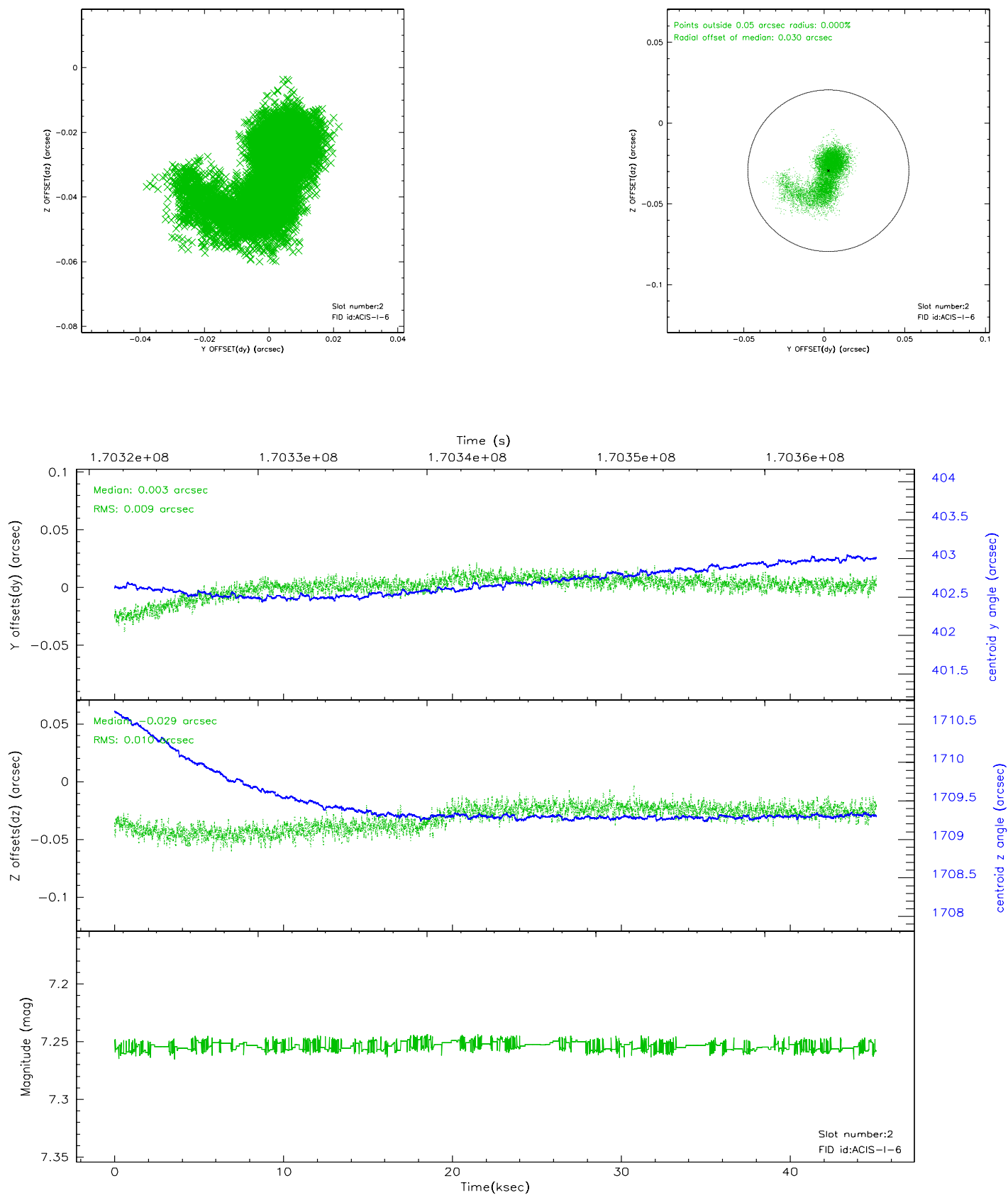
2.5.1 Slot 0



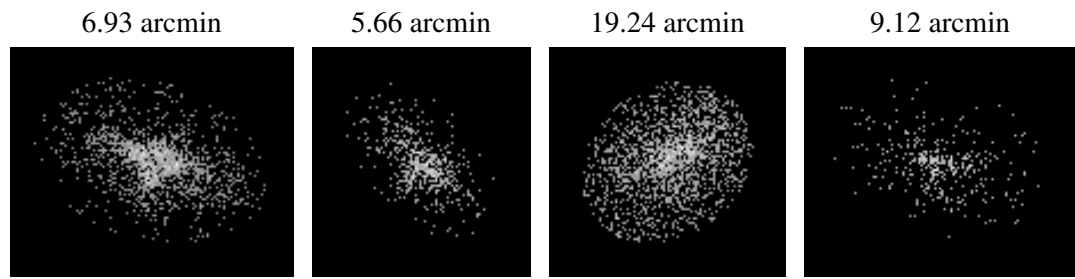
2.5.2 Slot 1



2.5.3 Slot 2



3 Point Sources



A Summary

A.1 Status

V&V Scientist	Beth Sundheim
V&V Date (YYYY-MM-DD)	2006.08.03
V&V Edition	1
V&V Disposition and Status	OK
V&V Charge Time	45.092

A.2 Comments