

V&V Reference Report

L2 ASCDS Version : 8.1.1

Observation 392 - L2 Version 4

Chandra X-Ray Center

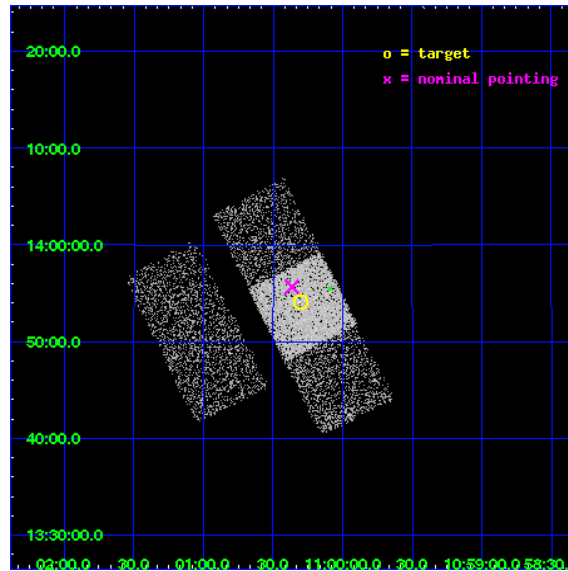
L2 Processing Date : Nov 23 2009

Contents

1	Front	2
2	OBI	3
2.1	OBI	3
2.1.1	Images	3
2.1.2	Bias	3
2.1.3	Parameters	4
2.1.4	Events	4
2.2	Compared Parameters	5
2.3	Aspect	6
2.4	Star Slots	9
2.4.1	Slot 3	9
2.4.2	Slot 4	10
2.4.3	Slot 5	11
2.5	FID Slots	12
2.5.1	Slot 0	12
2.5.2	Slot 1	13
2.5.3	Slot 2	14
3	Point Sources	15
A	Summary	16
A.1	Status	16
A.2	Comments	16

1 Front

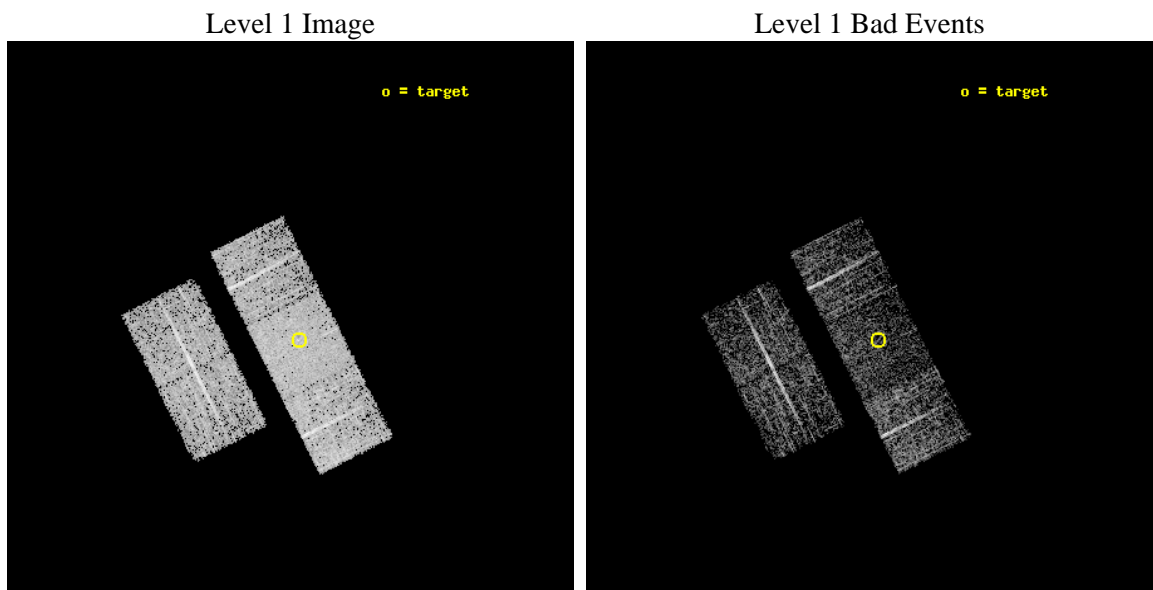
seq_num	700064	Sequence number
obs_id	392	Observation id
title	LOW-LUMINOSITY ACTIVE GALACTIC NUCLEI IN NEARBY GALAXIES	Proposal
observer	Prof Gordon Garmire	Principal investigator
object	NGC 3489	Source name
dtcycle	0	
cycle	P	events from which exps? Prim/Second/Both
ra_targ	165.075417	Observer's specified target RA
dec_targ	13.902222	Observer's specified target Dec
ra_nom	165.09127718955	Nominal RA
dec_nom	13.927911140987	Nominal Dec
roll_nom	63.27219830872	Nominal Roll
revision	4	Processing version of data
ontime	1775.4833163247	Sum of GTIs [s]
livetime	1753.0010775056	Livetime [s]
ontime2	1775.4422763214	Sum of GTIs [s]
ontime3	1775.3601963222	Sum of GTIs [s]
ontime6	1775.4012363255	Sum of GTIs [s]
ontime7	1775.4833163247	Sum of GTIs [s]
ontime8	1775.319046624	Sum of GTIs [s]
l2events	17034	Number of level 2 events



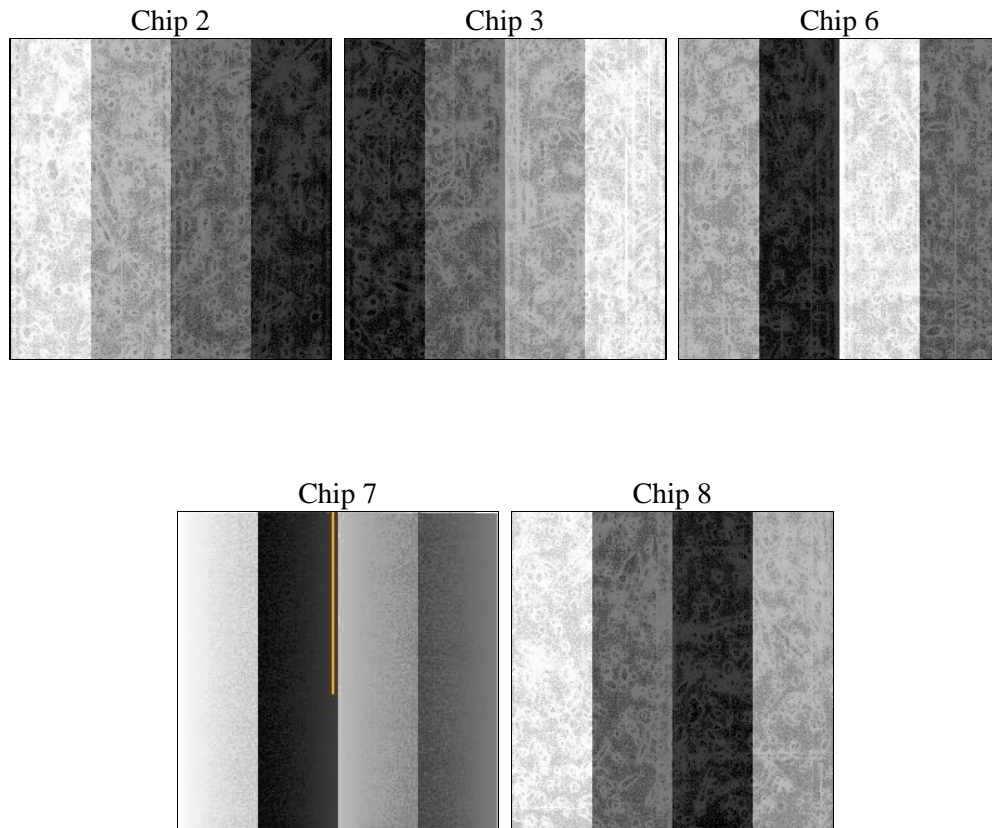
2 OBI

2.1 OBI

2.1.1 Images



2.1.2 Bias



2.1.3 Parameters

obi_num	1	Obi number	sched_exp_time	2000.000000	Scheduled observation exposure time
ascdsver	8.1.1	ASCDS version number	ontime	1775.4833163247	Sum of GTIs [s]
caldsver	4.1.4	 	ontime2	1775.4422763214	Sum of GTIs [s]
date	2009-11-23T17:45:06	Date and time of file creation	ontime3	1775.3601963222	Sum of GTIs [s]
revision	4	Processing version of data	ontime6	1775.4012363255	Sum of GTIs [s]
			ontime7	1775.4833163247	Sum of GTIs [s]
			ontime8	1775.319046624	Sum of GTIs [s]
			l1events	94834	Number of level 1 events

2.1.4 Events

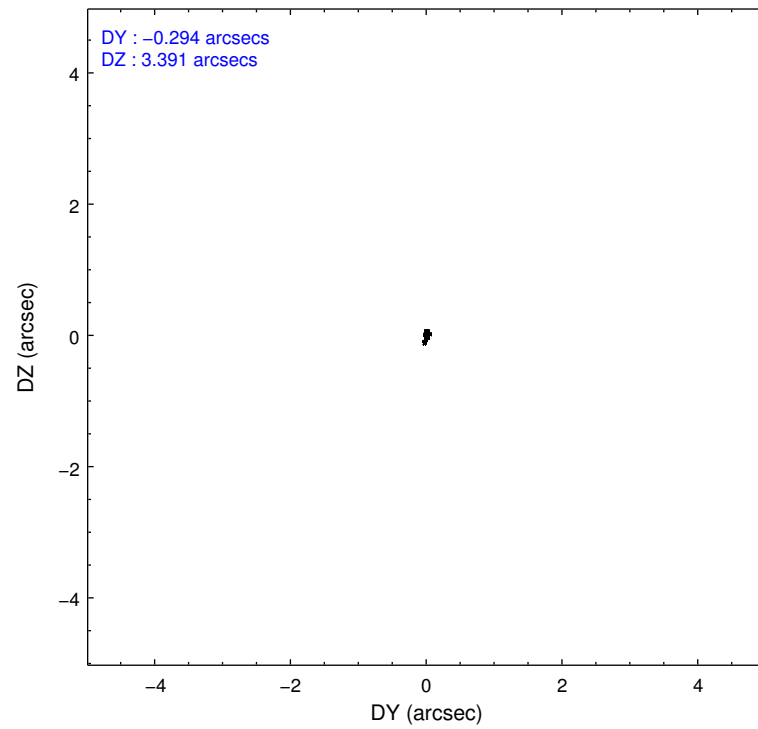
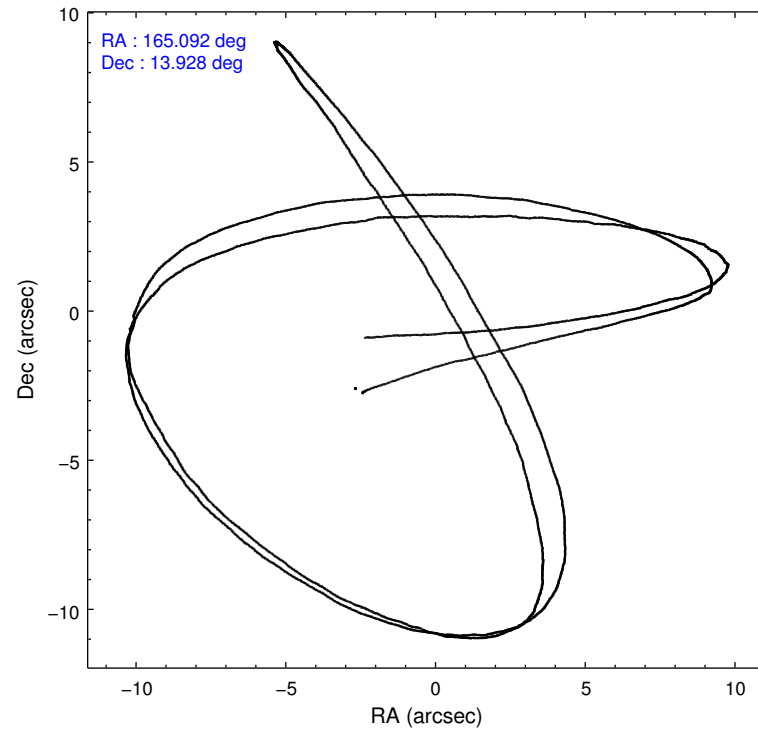
	ccd 2	ccd 3	ccd 6	ccd 7	ccd 8
level 1 events	16511	16660	16698	22536	22429
rejected events	15060	15080	15044	11226	19022
rejected %	91%	90%	90%	49%	84%

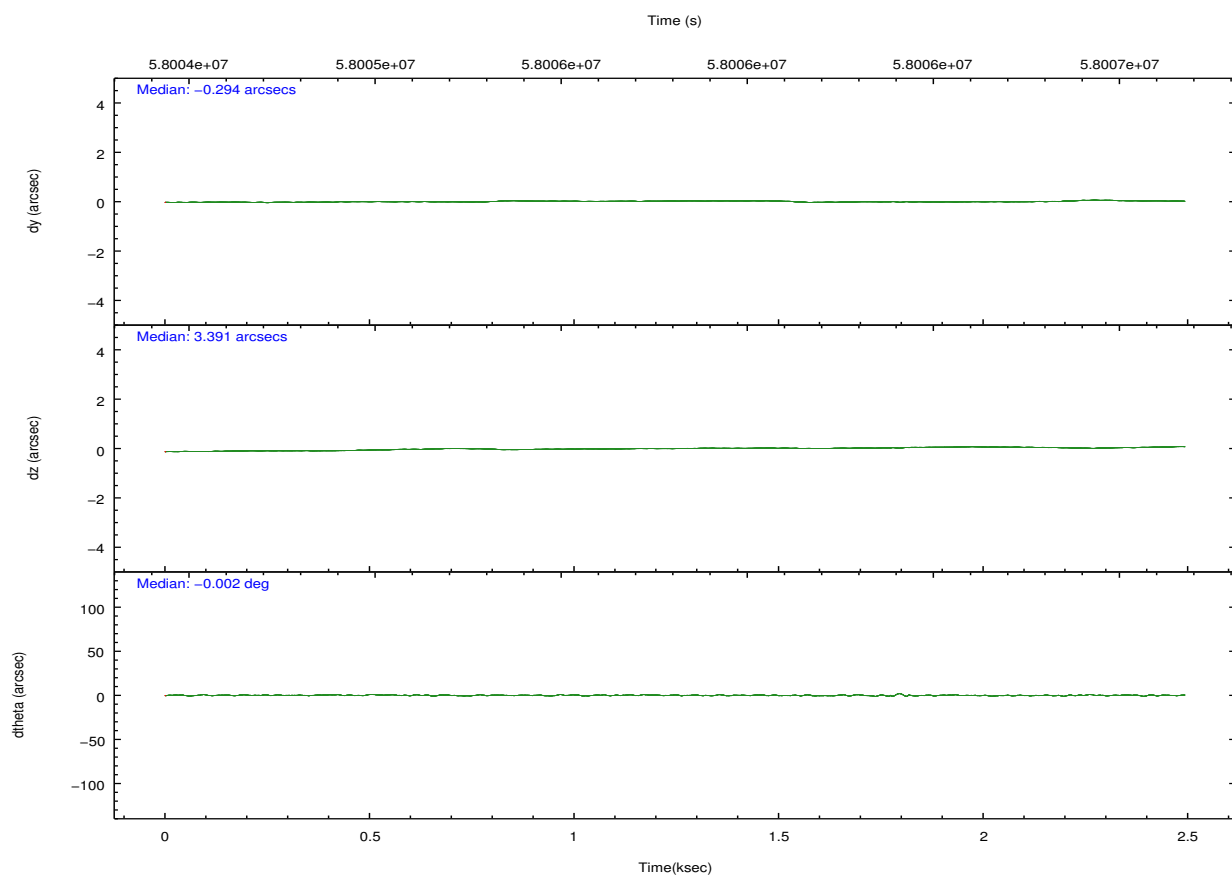
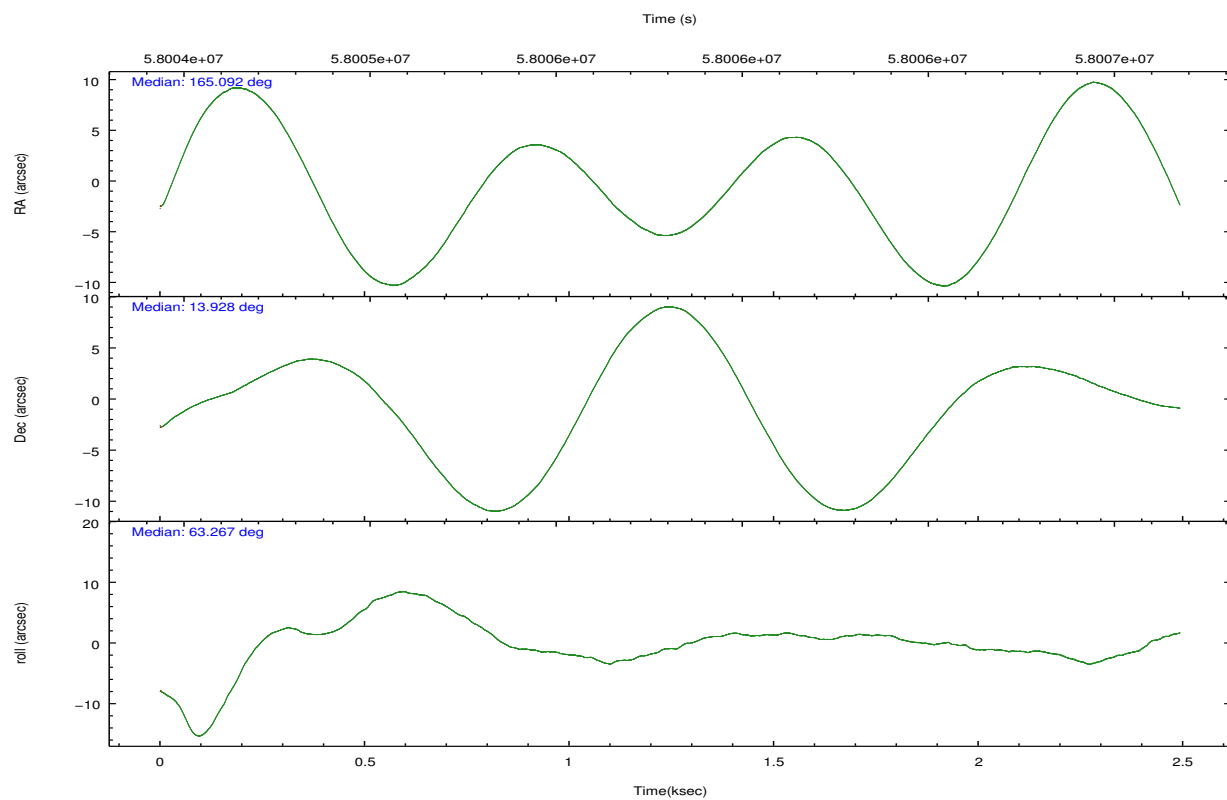
	ccd 2	ccd 3	ccd 6	ccd 7	ccd 8
grade 0 events	355	328	324	1208	801
	2%	1%	1%	5%	3%
grade 1 events	1	3	2	6	6
	0%	0%	0%	0%	0%
grade 2 events	578	620	720	2517	1118
	3%	3%	4%	11%	4%
grade 3 events	94	107	104	763	243
	0%	0%	0%	3%	1%
grade 4 events	84	95	107	698	216
	0%	0%	0%	3%	0%
grade 5 events	286	302	332	1119	430
	1%	1%	1%	4%	1%
grade 6 events	341	436	403	6176	1051
	2%	2%	2%	27%	4%
grade 7 events	14772	14769	14706	10049	18564
	89%	88%	88%	44%	82%

2.2 Compared Parameters

Parameter	Planned	Actual	Parameter	Planned	Actual
Instrument	ACIS	ACIS	Obspar format version number	6	6
Detector	ACIS-23678	ACIS-23678	Obspar file type	PREDICTED	ACTUAL
Grating	NONE	NONE	Obspar update status	NONE	UPDATED
Data mode	FAINT	FAINT	Number of optional ACIS chips dropped	0	0
Observation mode	POINTING	POINTING	On-chip summing requested	N	N
Pointing RA	165.092448	165.0912771895454	Subarray requested	NONE	NONE
Pointing Dec	13.900196	13.92791114098676	Alternating exposures requested	N	N
Pointing Roll	63.115313	63.27219830871952	Primary exposure time	0.000000	3.2
SIM focus pos (mm)	-0.684267	-0.6828225247311905			
SIM defocus (mm)	0	0.001444936568705701			
SIM translation stage pos (mm)	-190.132523	-190.1400660498719			
SIM translation stage offset (mm)	0	0.00754346686406393			
Observation start time	58005054.184000	58004275.239589			
Observation start date	1999-11-03T08:29:50	1999-11-03T08:17:55			
Observation end time	58007054.184000	58007301.039698			
Observation end date	1999-11-03T09:03:10	1999-11-03T09:08:21			
Read mode	TIMED	TIMED			

2.3 Aspect



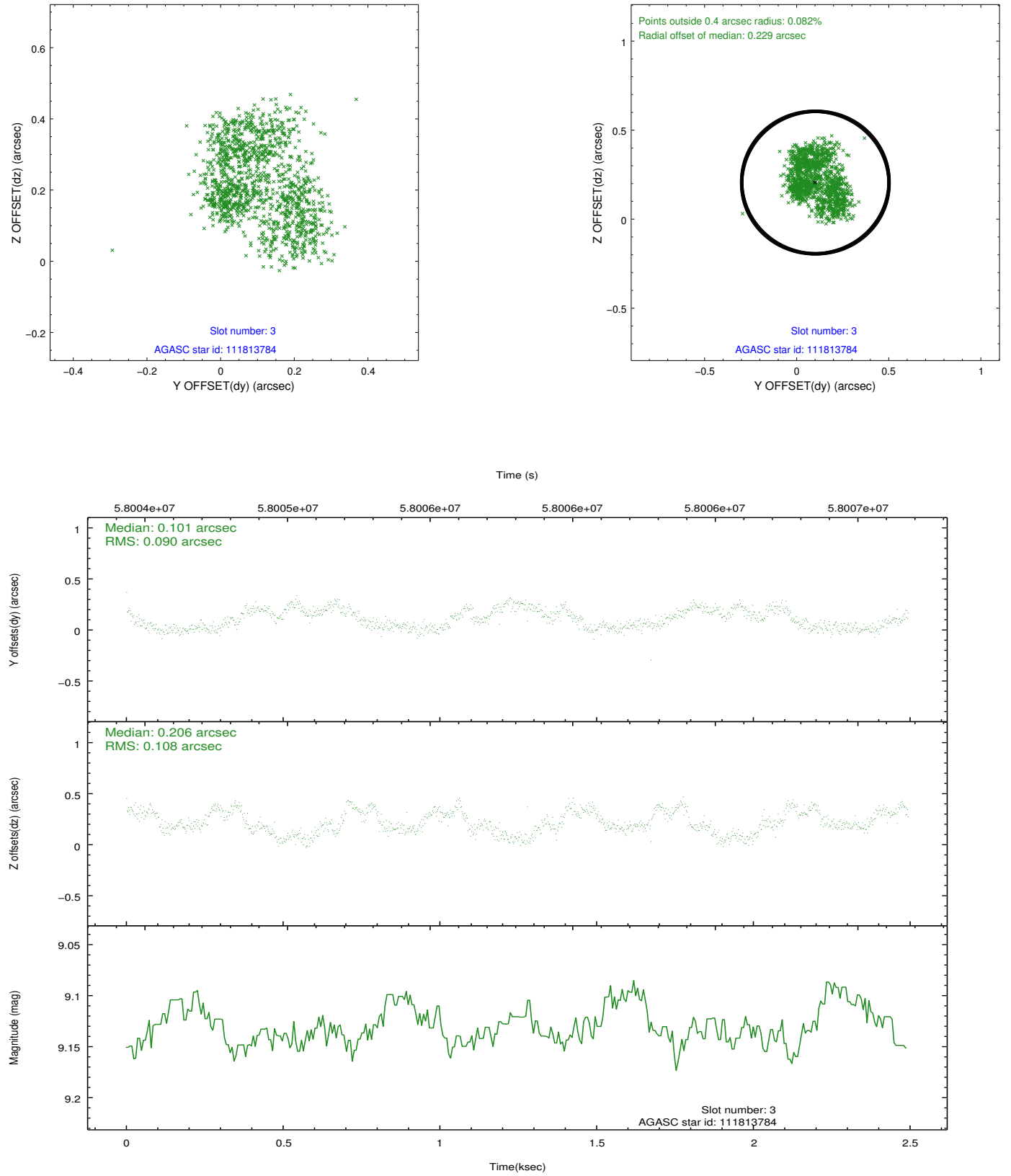


Slot Statistics

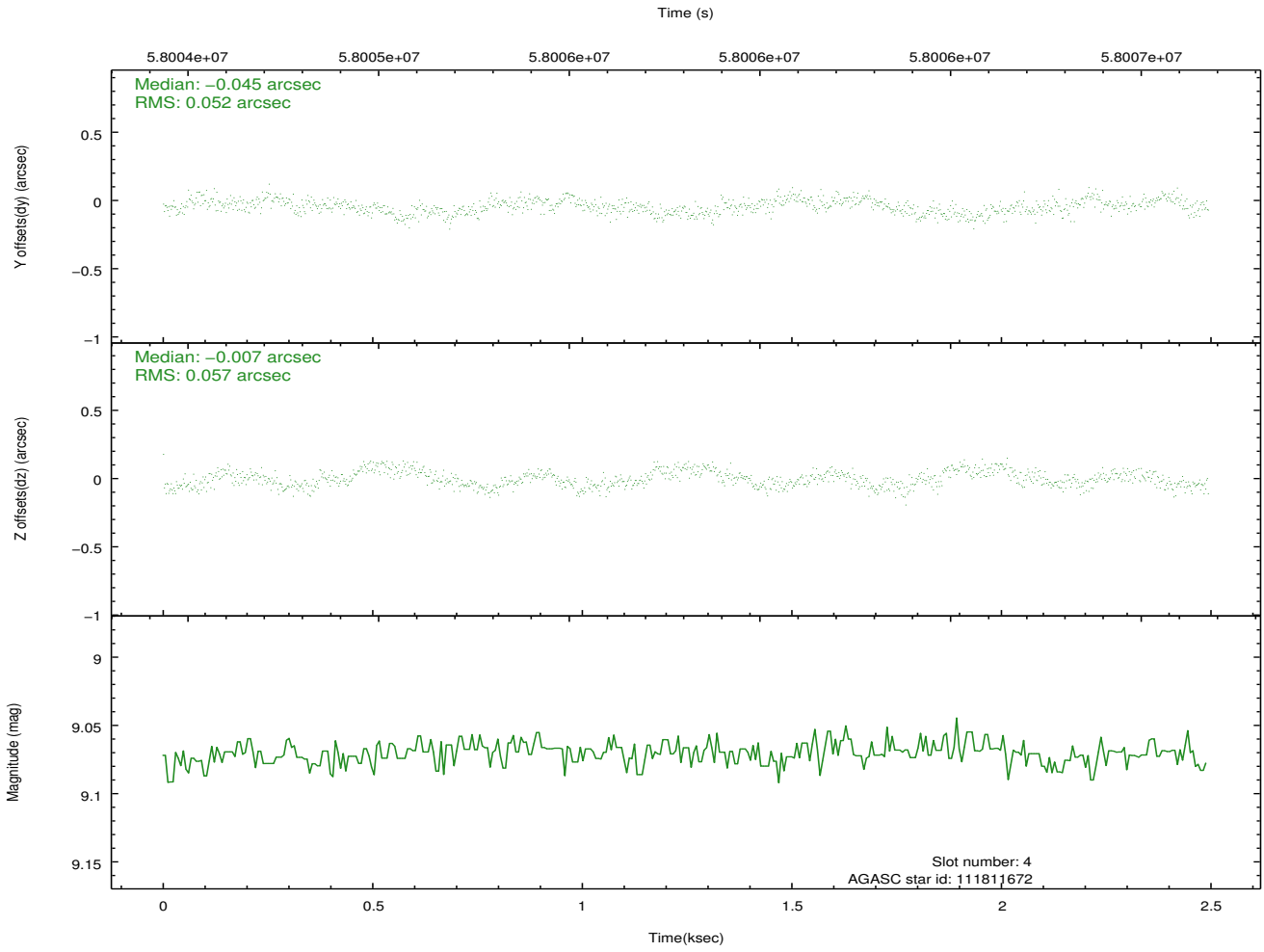
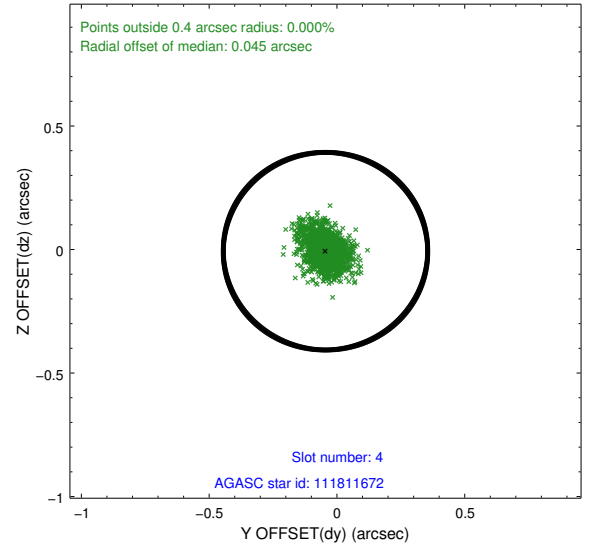
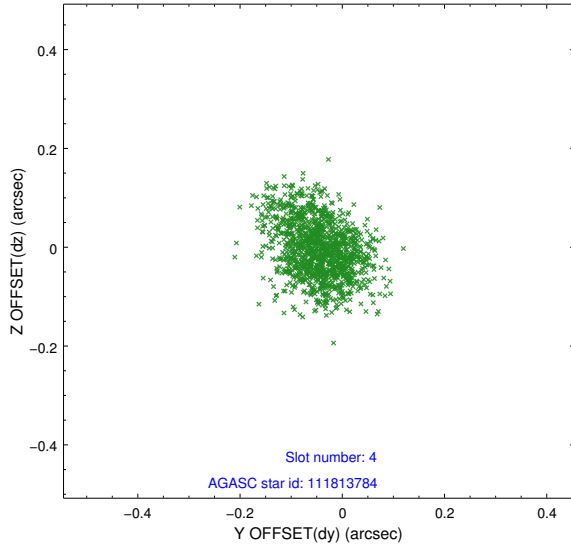
slot	status	id	mag	n_pts	med_dy	med_dz	dr1	dr2	ra	dec	mean_y	mean_z
0	FID	ACIS-S-2	7.12	1217	0.016	-0.013	0.007	0.012	0.000000	0.000000	-752.31	-1724.43
1	FID	ACIS-S-4	7.21	1217	0.039	-0.004	0.005	0.010	0.000000	0.000000	2160.51	182.70
2	FID	ACIS-S-5	7.24	1217	-0.086	0.025	0.006	0.010	0.000000	0.000000	-1803.61	177.93
3	GUIDE	111813784	9.13	1216	0.101	0.206	0.154	0.221	165.544200	13.593417	-270.45	-1906.88
4	GUIDE	111811672	9.07	1215	-0.045	-0.007	0.082	0.132	165.271137	14.035094	713.53	-336.88
5	GUIDE	111806048	9.77	1217	-0.060	-0.212	0.113	0.184	164.722476	14.443612	1161.08	2036.70
6	OMITTED		0.00	0	0.000	0.000	0.000	0.000	0.000000	0.000000	0.00	0.00
7	UNUSED		0.00	0	0.000	0.000	0.000	0.000	0.000000	0.000000	0.00	0.00

2.4 Star Slots

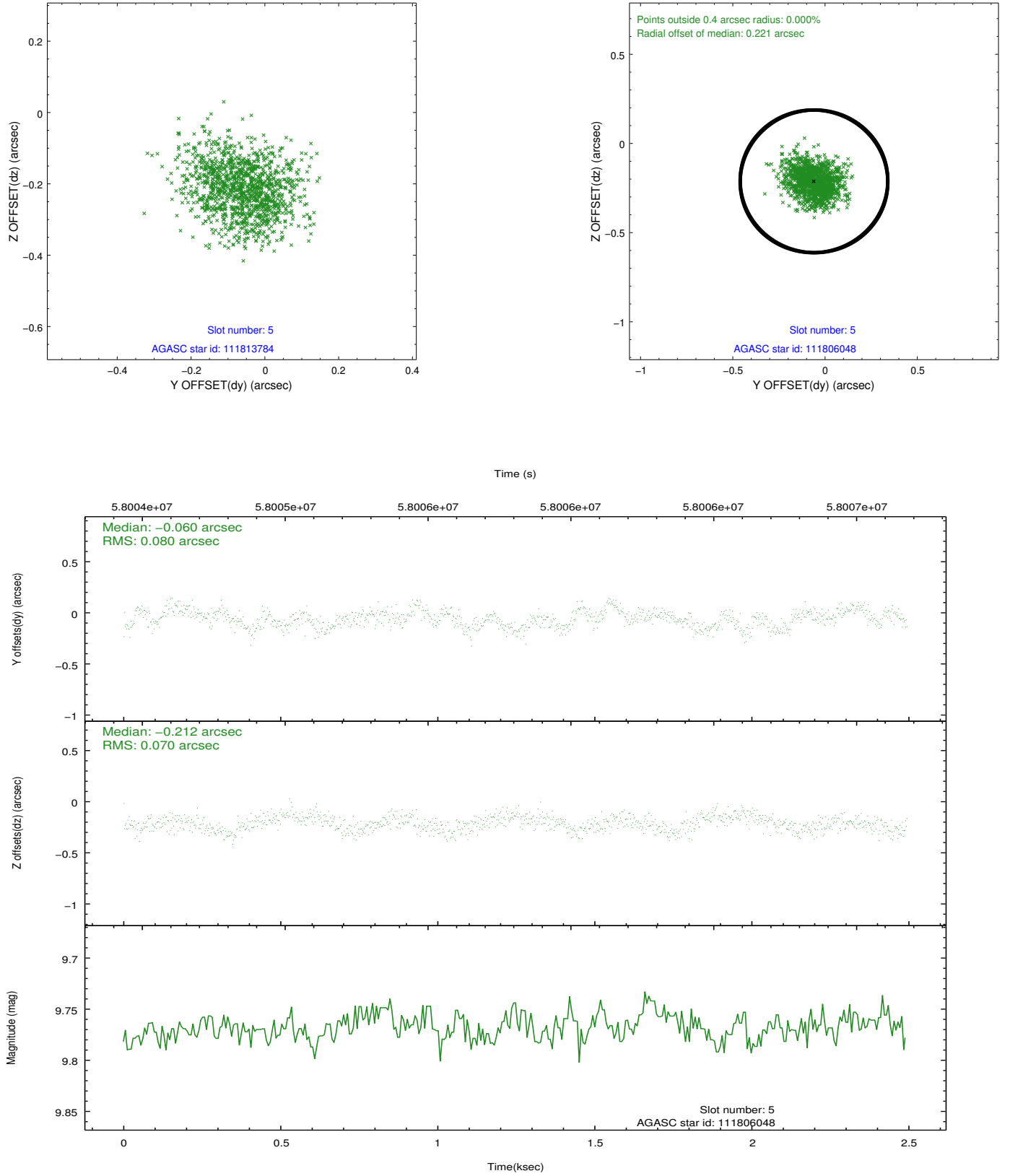
2.4.1 Slot 3



2.4.2 Slot 4

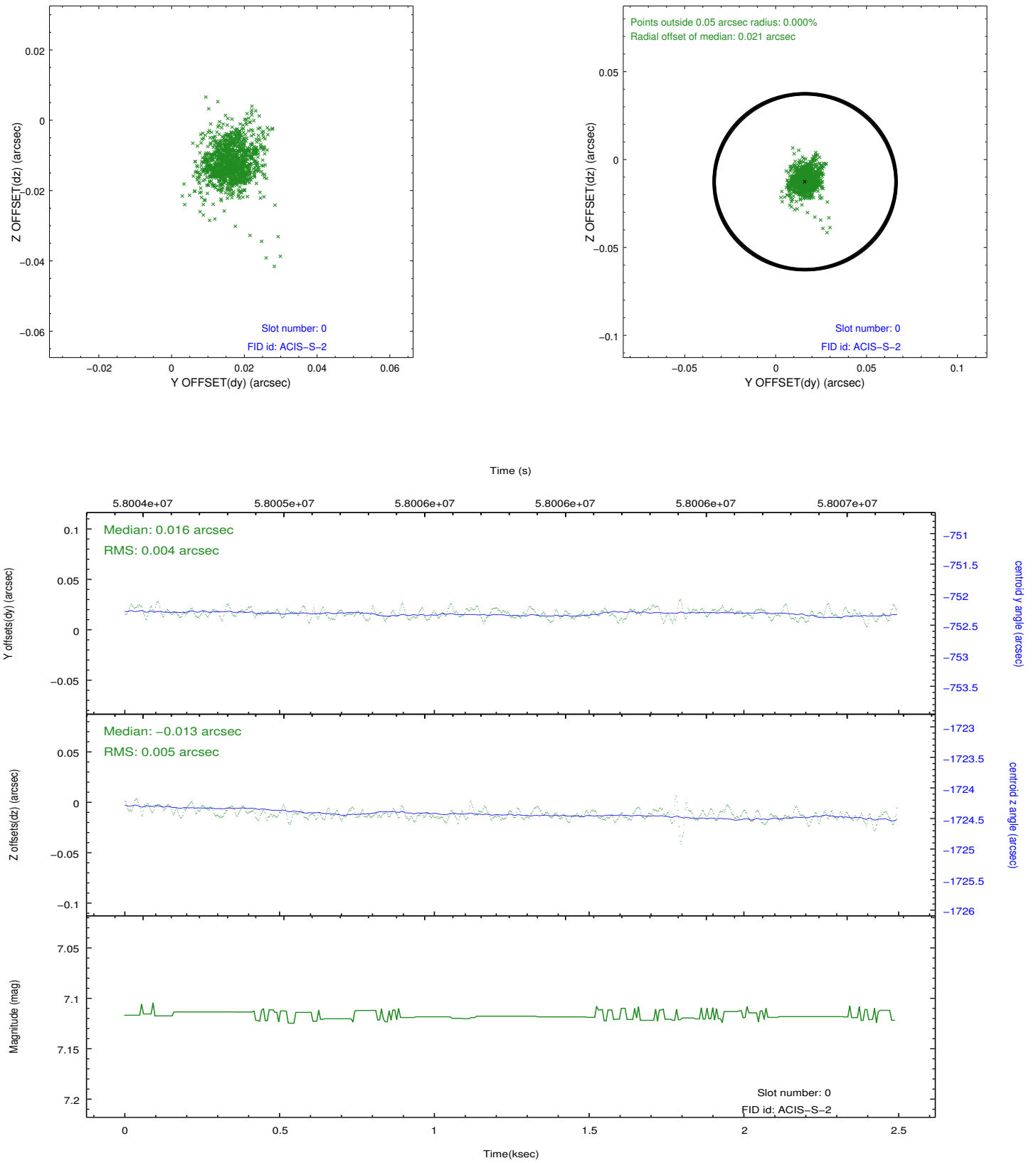


2.4.3 Slot 5

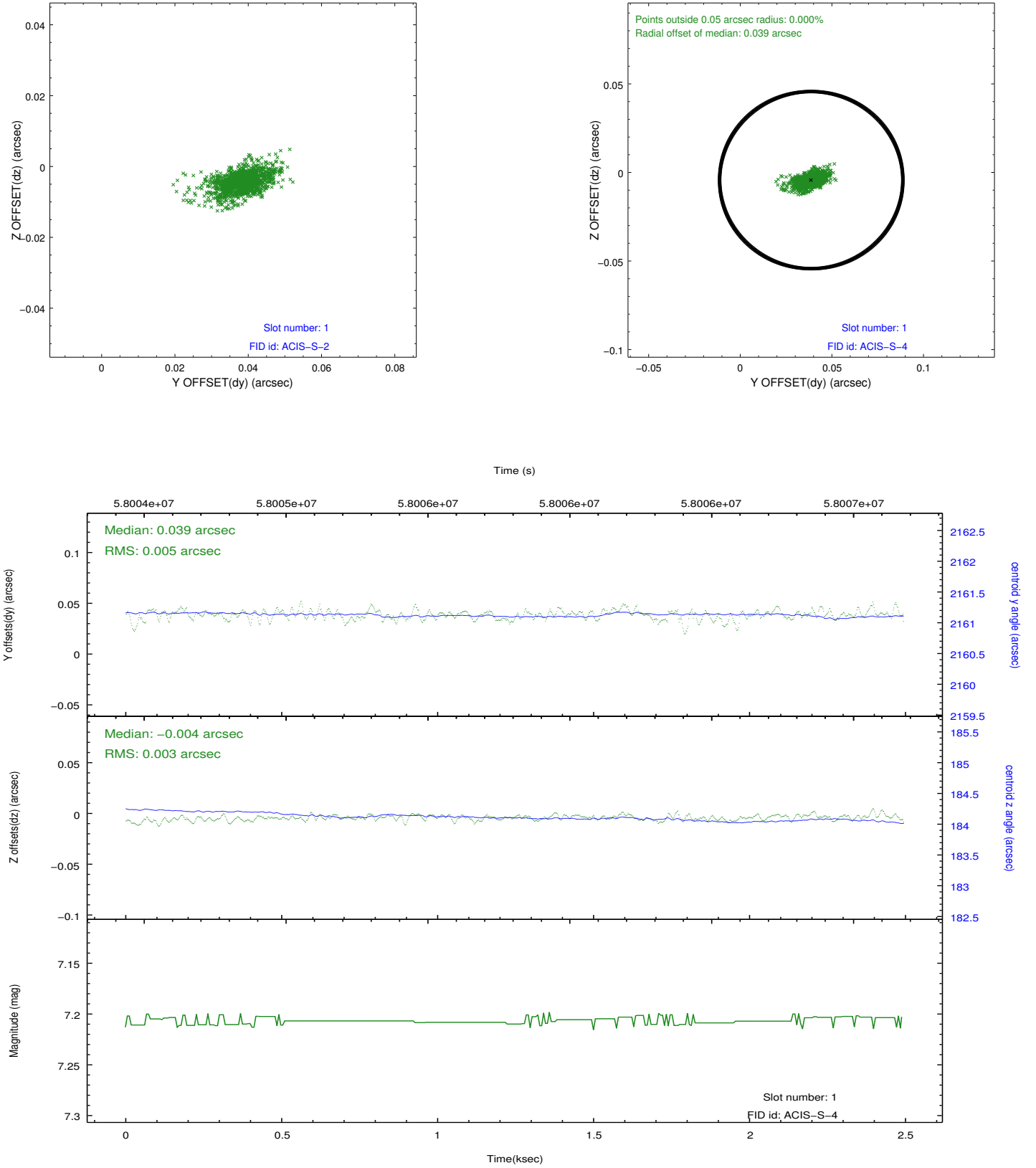


2.5 FID Slots

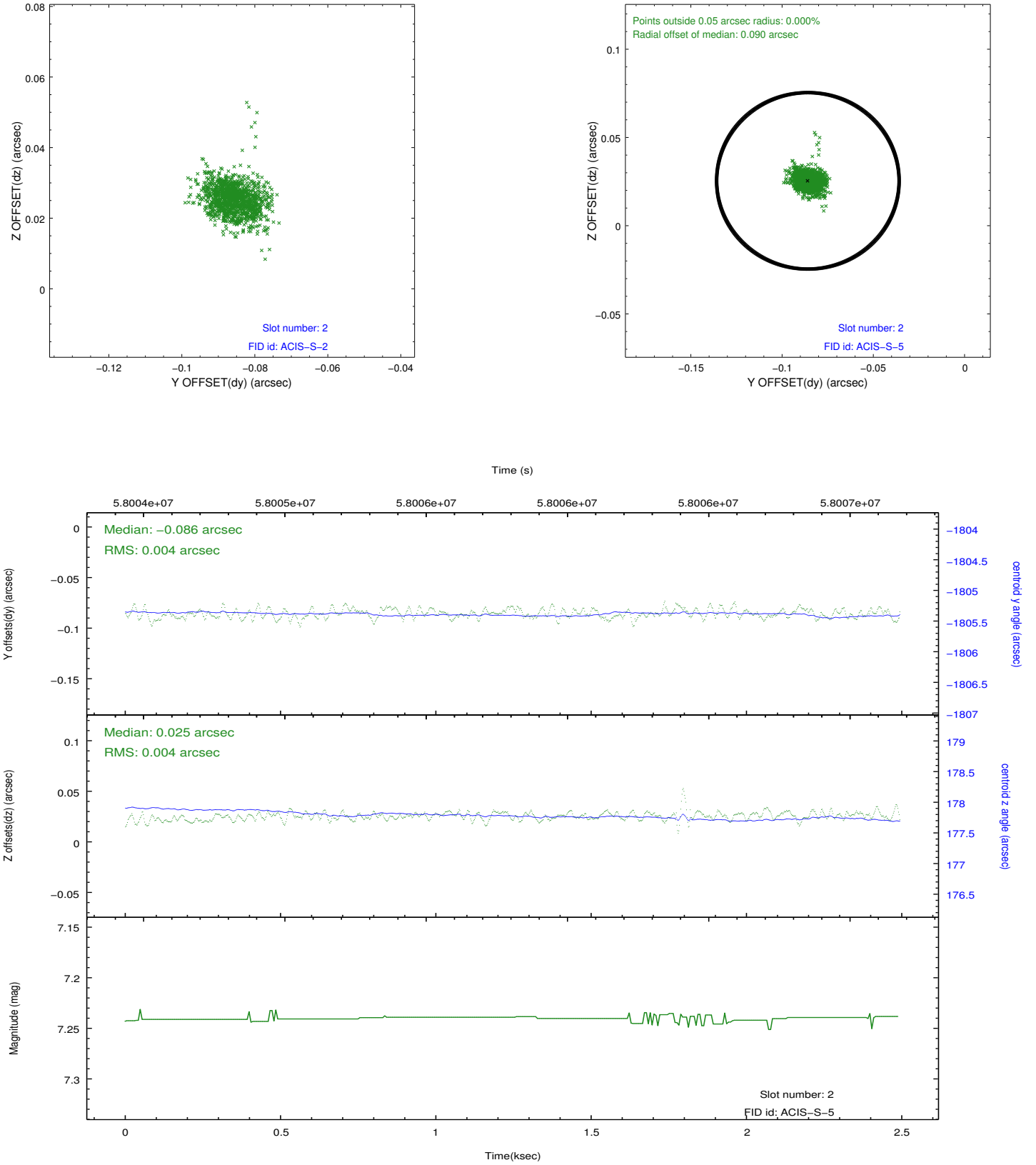
2.5.1 Slot 0



2.5.2 Slot 1



2.5.3 Slot 2



3 Point Sources

A Summary

A.1 Status

V&V Scientist	Jen Lauer
V&V Date (YYYY-MM-DD)	2010.10.01
V&V Edition	2
V&V Disposition and Status	OK
V&V Charge Time	1.776

A.2 Comments

The guide star in slot 6 was manually excluded from the processing due to poor data quality.

Slot 7 was not utilized in this observation.

=====

The focal plane temperature is approximately -110 C during this observation. This reprocessing of the data applies no CTI correction because none is available for this temperature at present.

The ACIS CTI correction has not been calibrated at this temperature, because it was early in the mission, and ACIS had not yet been lowered to the standard -119.7 C. Both front and back illuminated chips are affected. However a T_GAIN correction has been applied to the BI chips (ACIS-5 and ACIS-7) data included here.

The ACIS spectral response calibration is less accurate at these warmer temperatures than it is at -119.7 C. Users whose science objectives depend on the most accurate spectral response (ie: fitting line-rich spectra) may notice an effect. Users whose science objectives do not depend on the most accurate spectral response should not notice an effect.