

V&V Reference Report

L2 ASCDS Version : 7.6.9

Observation 3482 - L2 Version 001
Chandra X-Ray Center

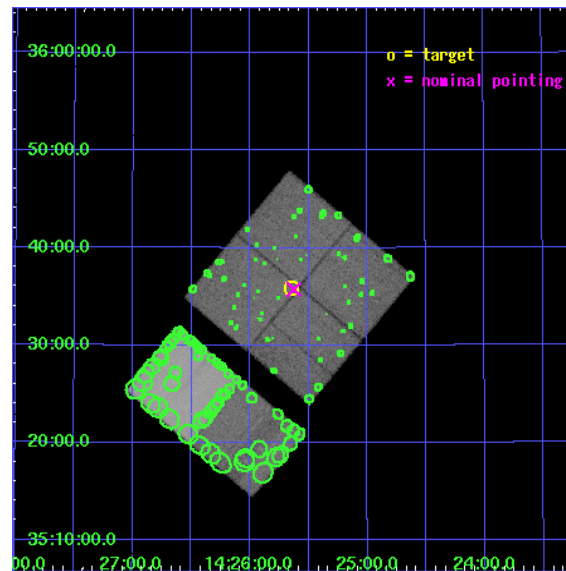
L2 Processing Date : Sep 19 2006

Contents

1	Front	2
2	OBI	3
2.1	OBI	3
2.1.1	Images	3
2.1.2	Bias	3
2.1.3	Parameters	4
2.1.4	Events	4
2.2	Compared Parameters	5
2.3	Aspect	6
2.4	Star Slots	9
2.4.1	Slot 3	9
2.4.2	Slot 4	10
2.4.3	Slot 5	11
2.4.4	Slot 6	12
2.4.5	Slot 7	13
2.5	FID Slots	14
2.5.1	Slot 0	14
2.5.2	Slot 1	15
2.5.3	Slot 2	16
3	Point Sources	17
A	Summary	18
A.1	Status	18
A.2	Comments	18

1 Front

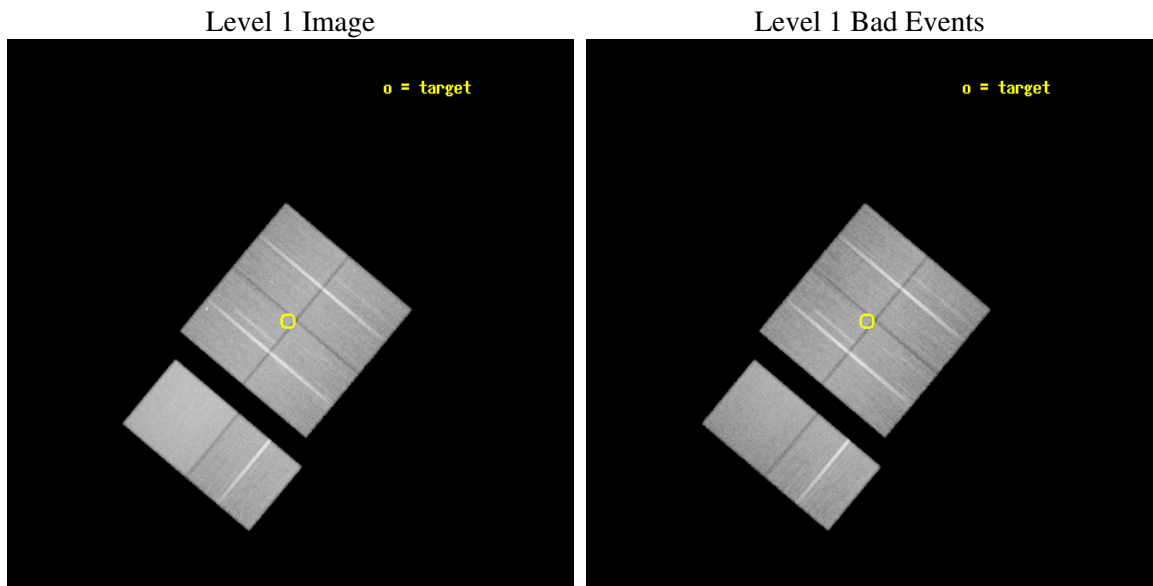
seq_num	700569
obs_id	3482
title	STRONG LYMAN ALPHA SOURCES AT REDSHIFTS $Z > 4$: GALAXIES OR QUASARS?
observer	DR. SANGEETA MALHOTRA
object	FIELD-142549+353248
dtcycle	0
cycle	P
ra_targ	216.412
dec_targ	35.597
ra_nom	216.40651630282
dec_nom	35.595643757985
roll_nom	219.94322546969
revision	3
ontime	59211.540495574
livetime	58461.76831691
ontime0	59275.124548763
ontime1	59269.960279256
ontime2	59177.895471394
ontime3	59211.540495574
ontime6	59288.088230252
ontime7	59660.799777746
l2events	545896



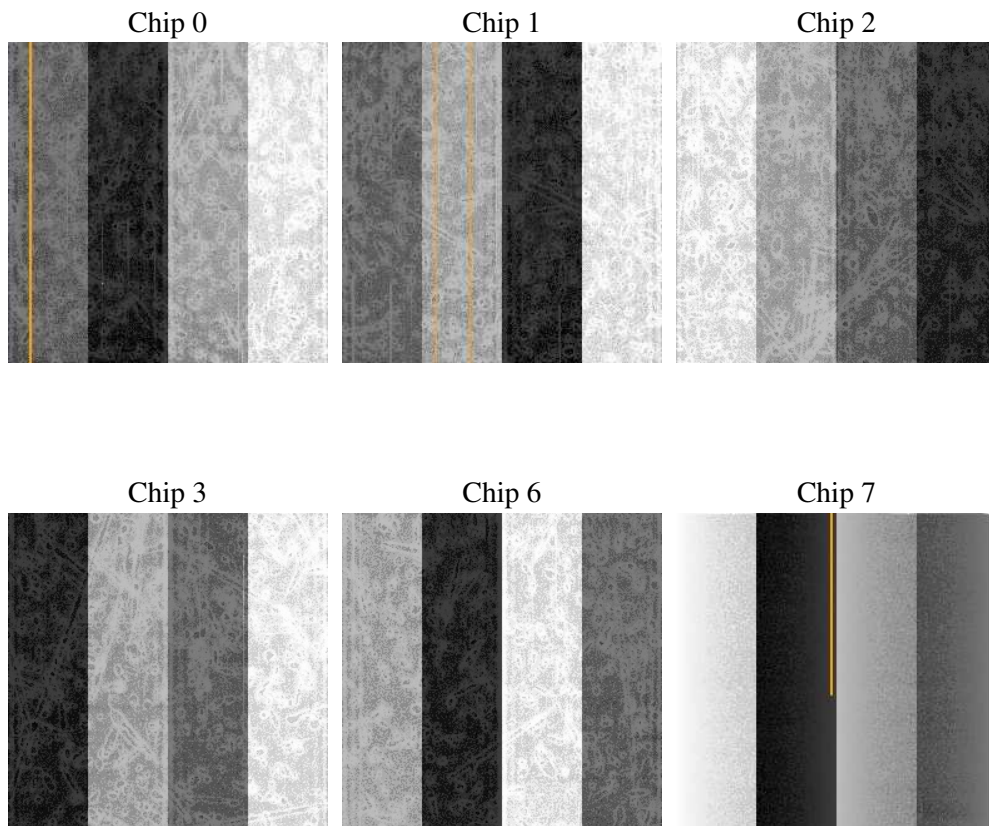
2 OBI

2.1 OBI

2.1.1 Images



2.1.2 Bias



2.1.3 Parameters

obi_num	4
ascdsver	7.6.9
caldsver	3.2.3
date	2006-09-19T10:08:08
revision	3

sched_exp_time	59700.108000
ontime	59216.323355258
ontime0	59277.90171057
ontime1	59274.661058933
ontime2	59183.913653284
ontime3	59216.323355258
ontime6	59294.106412143
ontime7	59666.817959636
l1events	2546471

2.1.4 Events

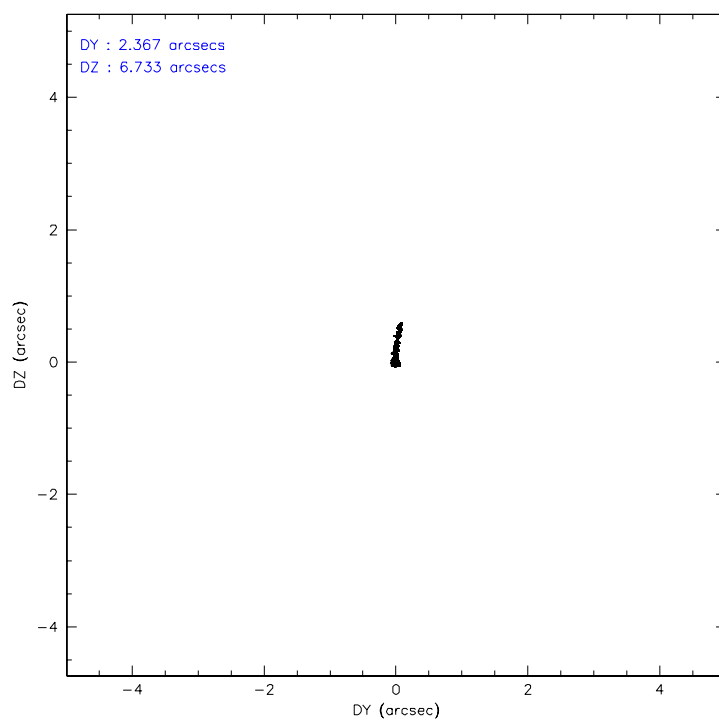
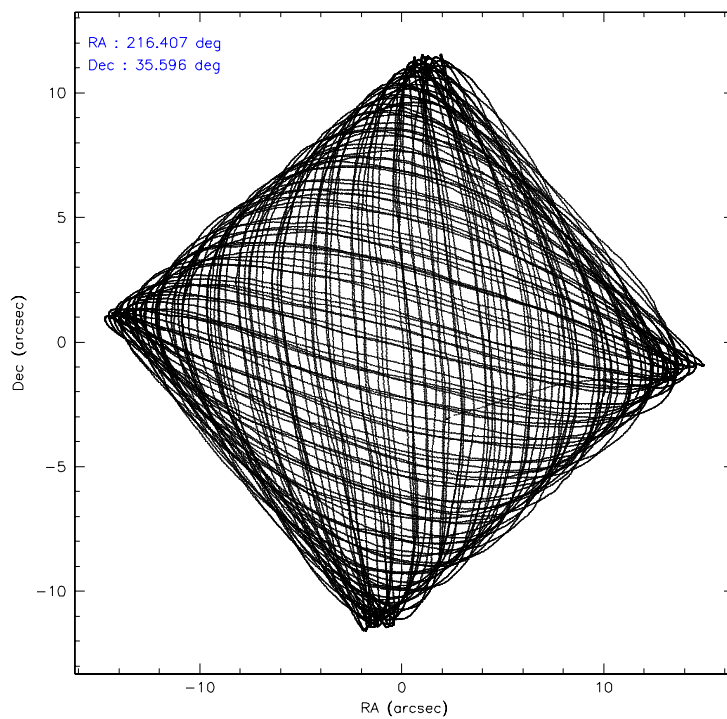
	ccd 0	ccd 1	ccd 2	ccd 3	ccd 6	ccd 7
level 1 events	371420	374211	404789	405664	423931	566456
rejected events	304110	304494	338942	337859	352792	319396
rejected %	81%	81%	83%	83%	83%	56%

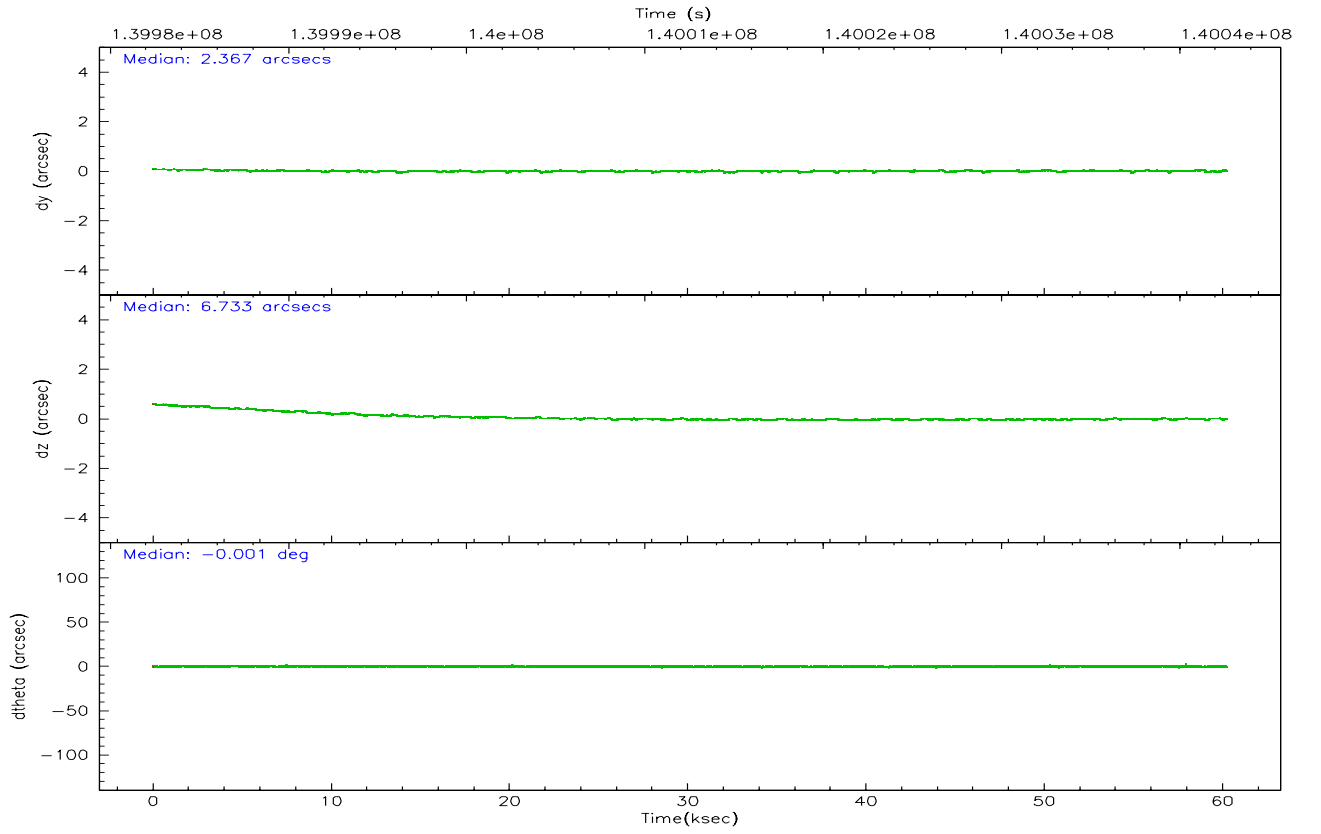
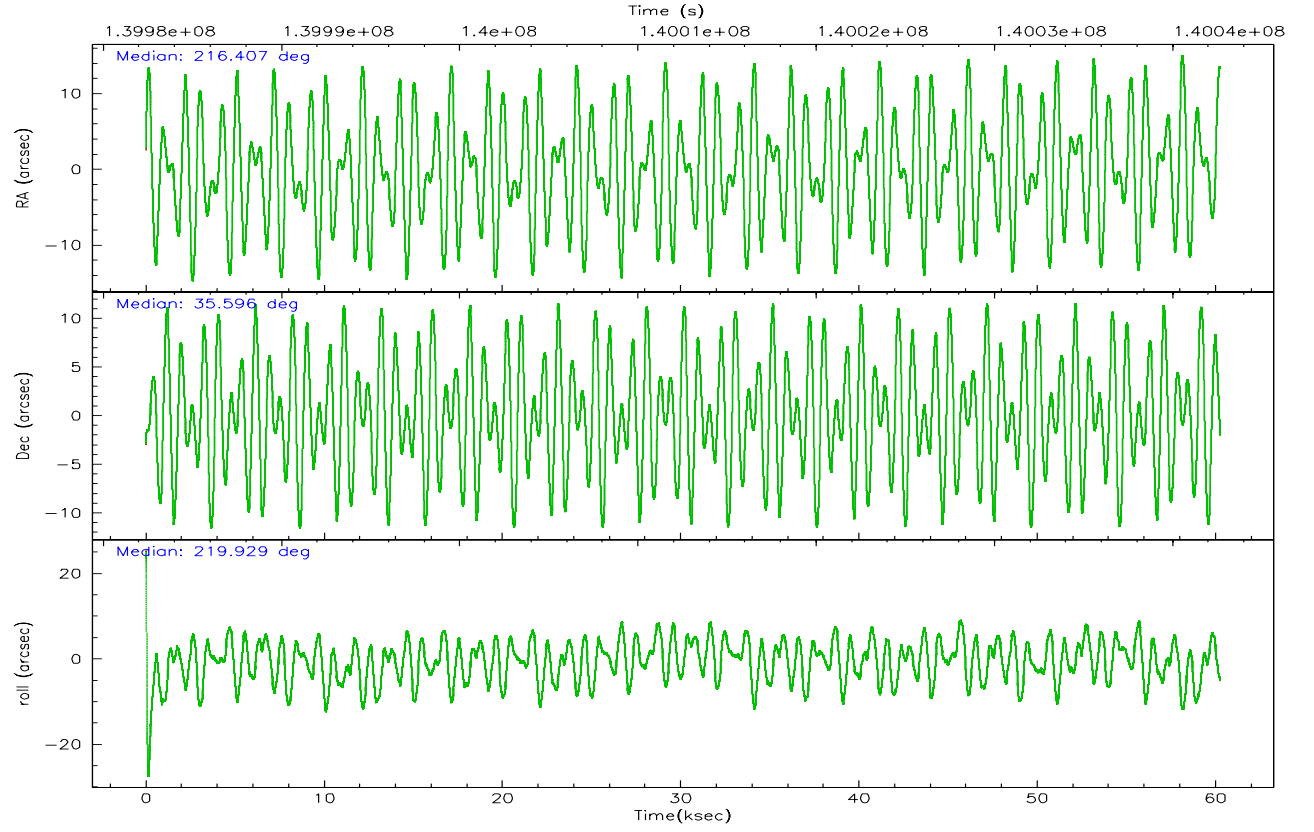
	ccd 0	ccd 1	ccd 2	ccd 3	ccd 6	ccd 7
grade 0 events	36514	36817	36437	37613	38616	17263
	9%	9%	9%	9%	9%	3%
grade 1 events	234	231	208	228	246	289
	0%	0%	0%	0%	0%	0%
grade 2 events	12150	12282	11947	11667	12123	57374
	3%	3%	2%	2%	2%	10%
grade 3 events	5009	5451	4619	4955	5246	12829
	1%	1%	1%	1%	1%	2%
grade 4 events	4776	5389	4540	4747	5090	12343
	1%	1%	1%	1%	1%	2%
grade 5 events	13953	15054	13559	15621	17248	34198
	3%	4%	3%	3%	4%	6%
grade 6 events	8861	9810	8325	8849	10090	147299
	2%	2%	2%	2%	2%	26%
grade 7 events	289923	289177	325154	321984	335272	284861
	78%	77%	80%	79%	79%	50%

2.2 Compared Parameters

Parameter	Planned	Actual	Parameter	Planned	Actual
Instrument	ACIS	ACIS	Obspar format version number	6	6
Detector	ACIS-012367	ACIS-012367	Obspar file type	PREDICTED	ACTUAL
Grating	NONE	NONE	Obspar update status	NONE	UPDATED
Data mode	VFAINT	VFAINT	Number of optional ACIS chips dropped	0	0
Observation mode	POINTING	POINTING	On-chip summing requested	N	N
Pointing RA	216.417968	216.4065163028193	Subarray requested	NONE	NONE
Pointing Dec	35.621406	35.5956437579849	Alternating exposures requested	N	N
Pointing Roll	219.727863	219.9432254696888	Primary exposure time	0.000000	3.2
SIM focus pos (mm)	-0.782348	-0.7809083437167272			
SIM defocus (mm)	0	0.001439871863259334			
SIM translation stage pos (mm)	-233.592463	-233.5874344608287			
SIM translation stage offset (mm)	0	-0.005018542100998502			
Observation start time	139982970.184000	139981819.66921			
Observation start date	2002-06-09T04:08:26	2002-06-09T03:50:19			
Observation end time	140042670.184000	140042985.00921			
Observation end date	2002-06-09T20:43:26	2002-06-09T20:49:45			
Read mode	TIMED	TIMED			

2.3 Aspect



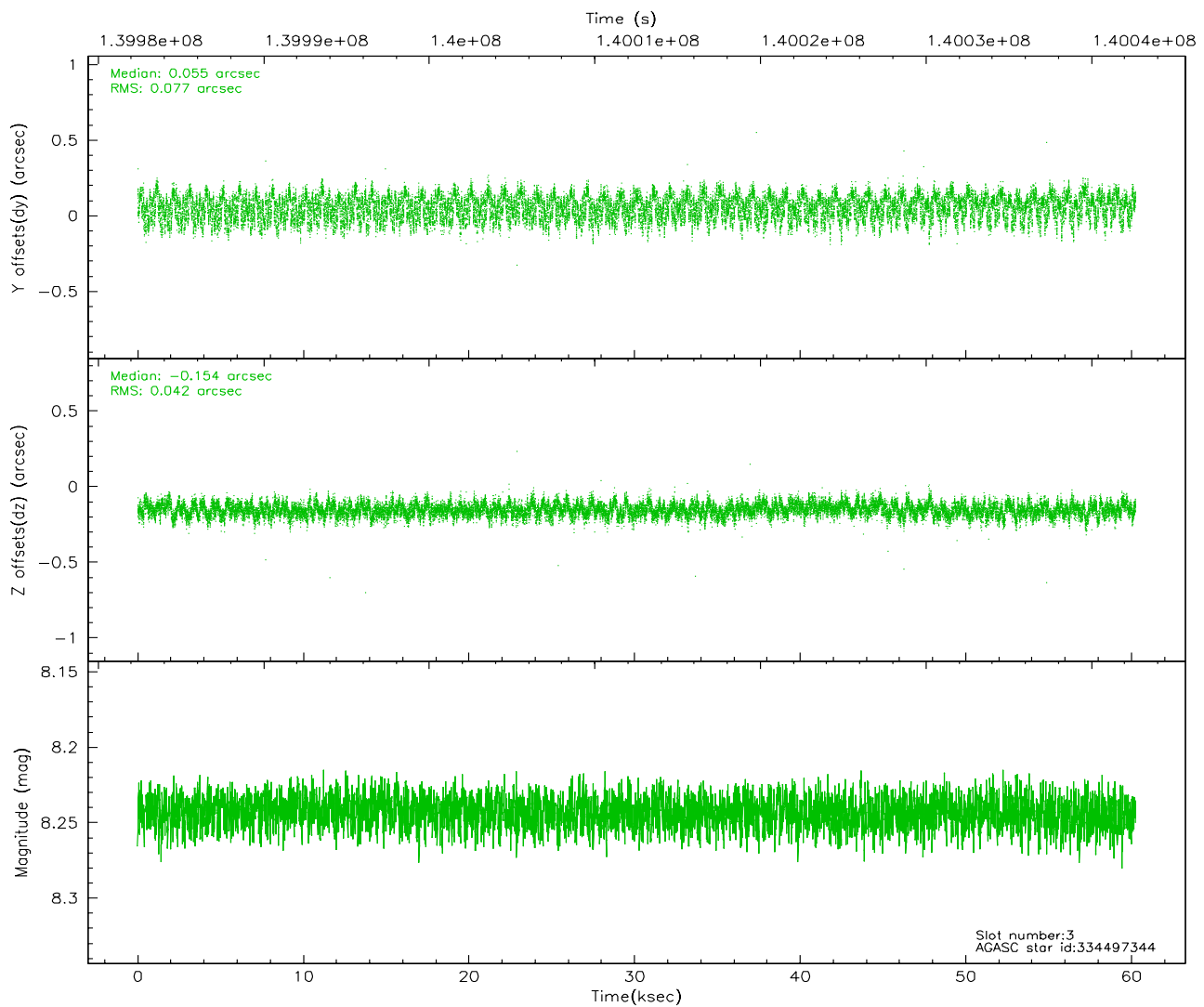
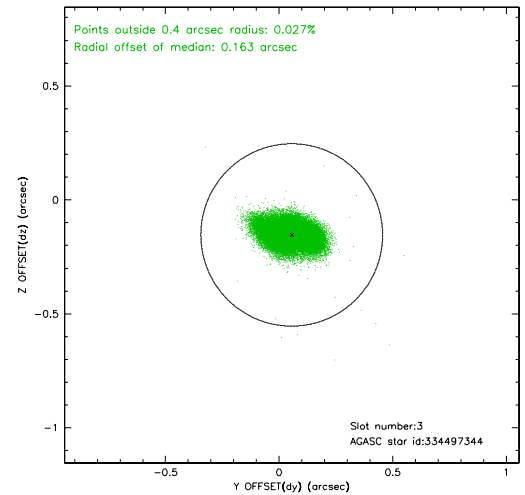
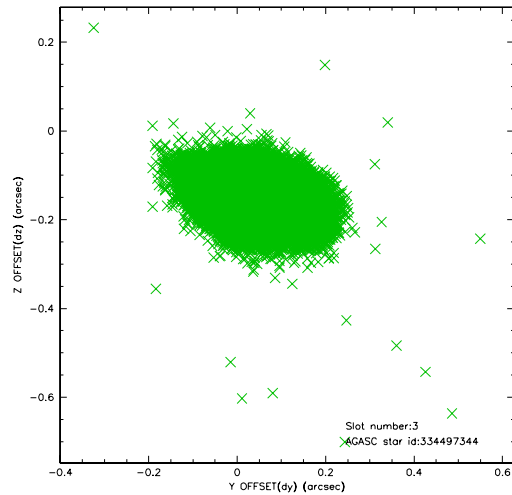


Slot Statistics

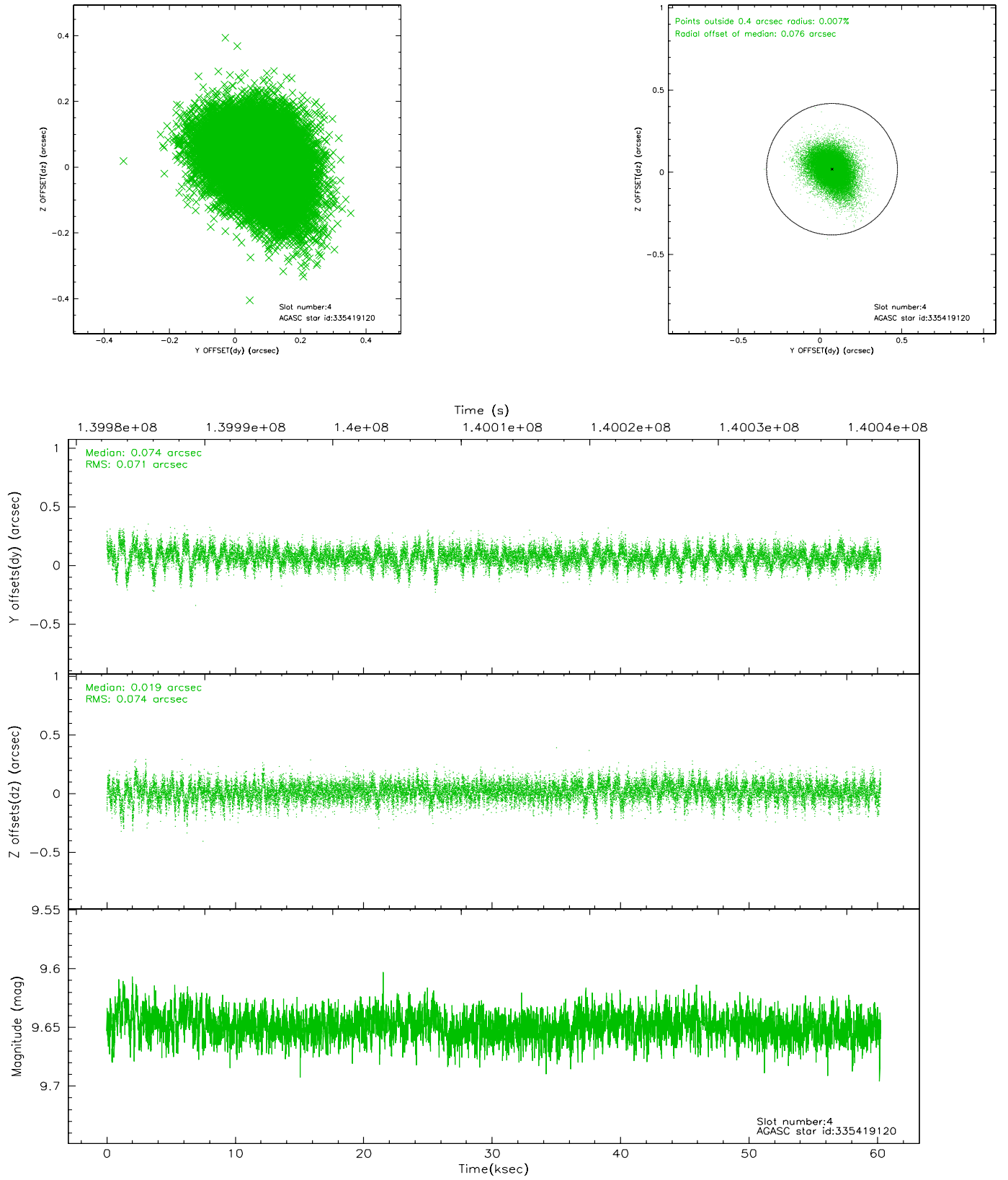
slot	status	id	mag	n_pts	med_dy	med_dz	dr1	dr2	ra	dec	mean_y	mean_z
0	FID	ACIS-I-1	7.24	14698	-0.023	0.041	0.008	0.015	0.000000	0.000000	937.40	-830.17
1	FID	ACIS-I-5	7.24	14697	-0.020	0.040	0.006	0.010	0.000000	0.000000	-1810.69	1067.39
2	FID	ACIS-I-6	7.26	14697	-0.048	-0.011	0.008	0.016	0.000000	0.000000	403.02	1711.75
3	GUIDE	334497344	8.24	29390	0.055	-0.154	0.094	0.149	215.557968	35.648808	1865.86	-1691.91
4	GUIDE	335419120	9.65	29373	0.074	0.019	0.107	0.183	216.521861	35.833546	-720.51	-393.81
5	GUIDE	335414448	7.36	29397	-0.117	0.068	0.068	0.112	216.992261	35.577204	-1194.42	1193.46
6	GUIDE	335419056	10.25	29379	-0.089	0.051	0.198	0.332	217.429800	35.467704	-1937.41	2309.79
7	GUIDE	335418800	10.00	29372	0.081	0.020	0.111	0.187	216.219343	35.536892	642.47	-138.01

2.4 Star Slots

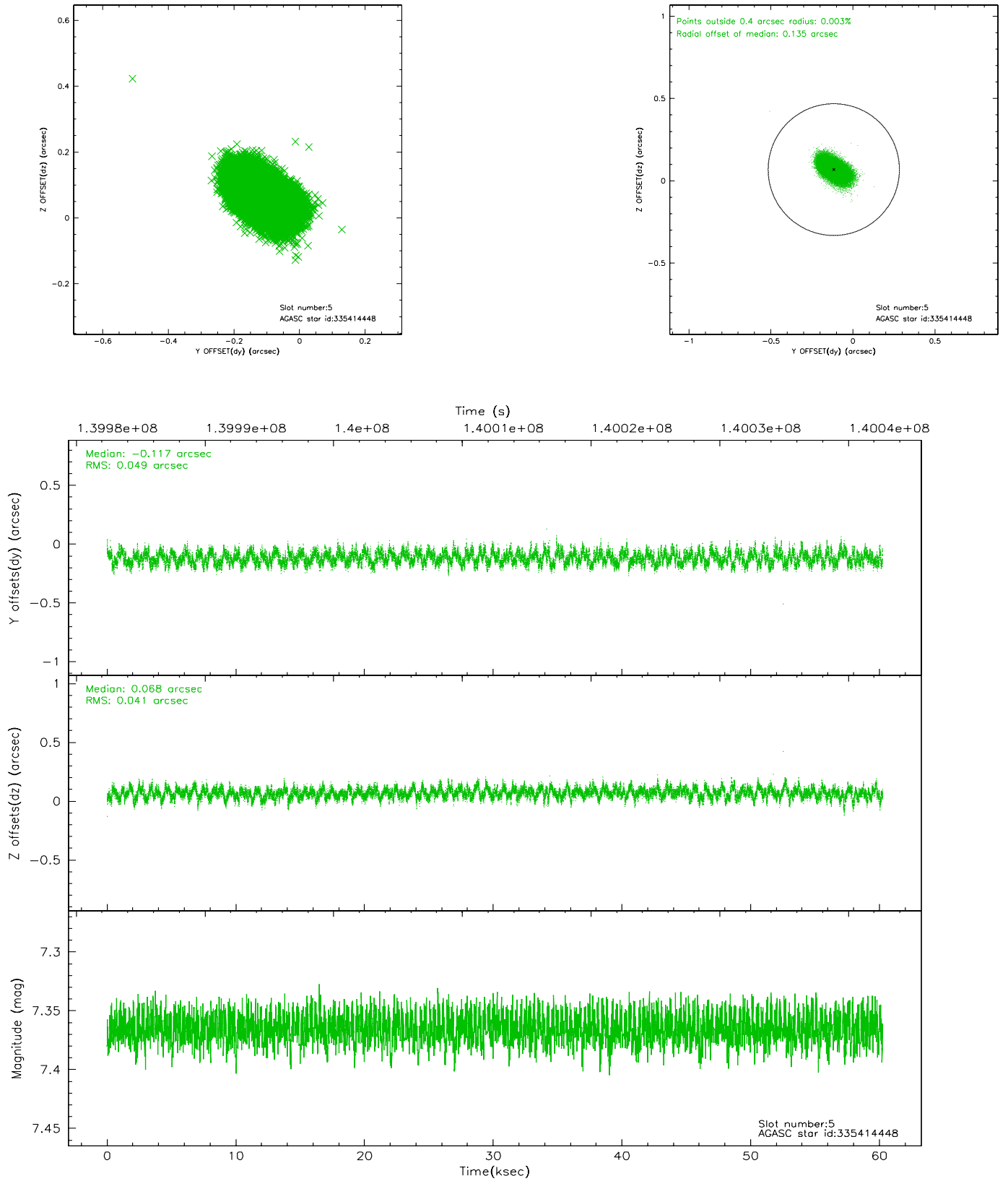
2.4.1 Slot 3



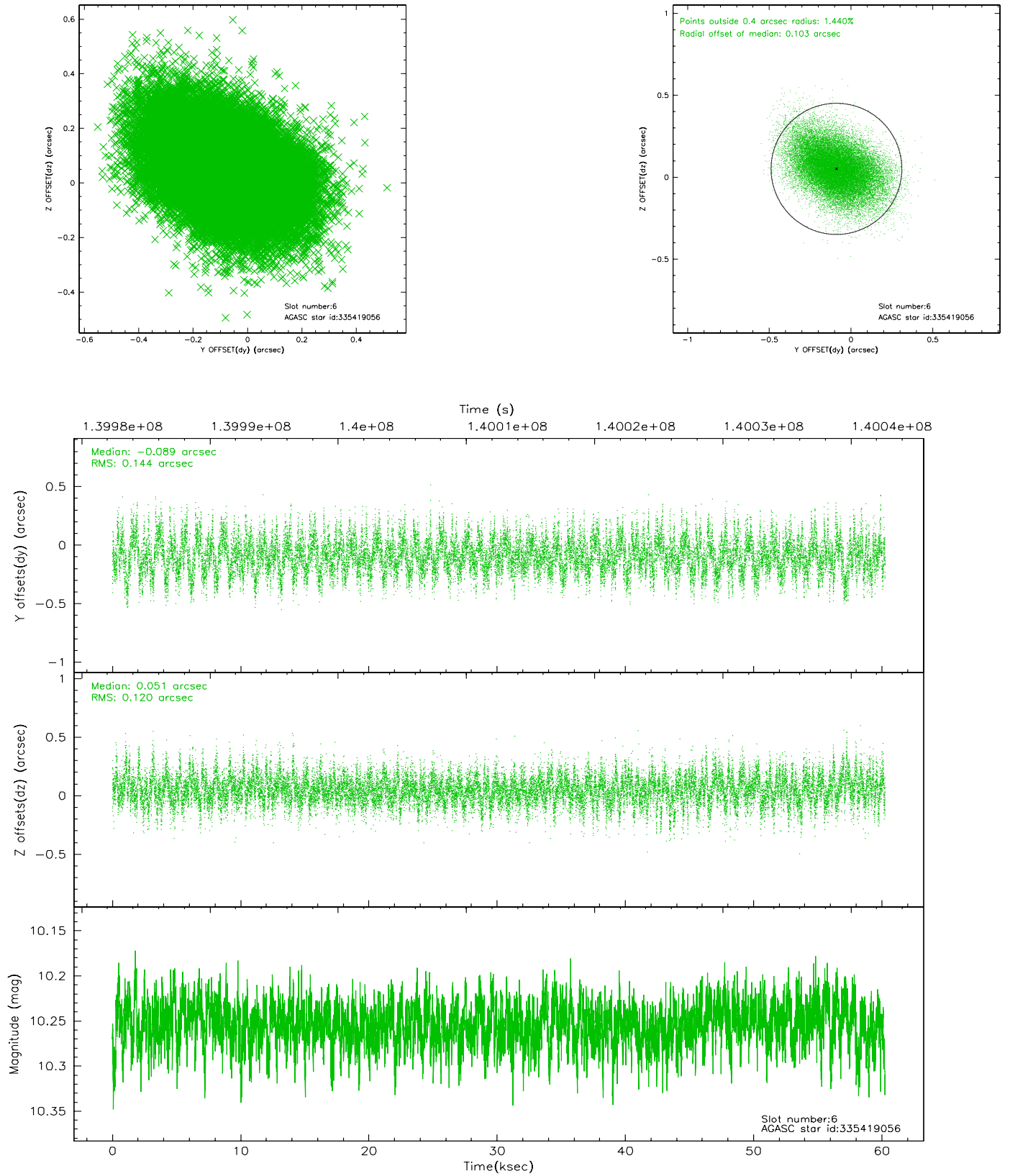
2.4.2 Slot 4



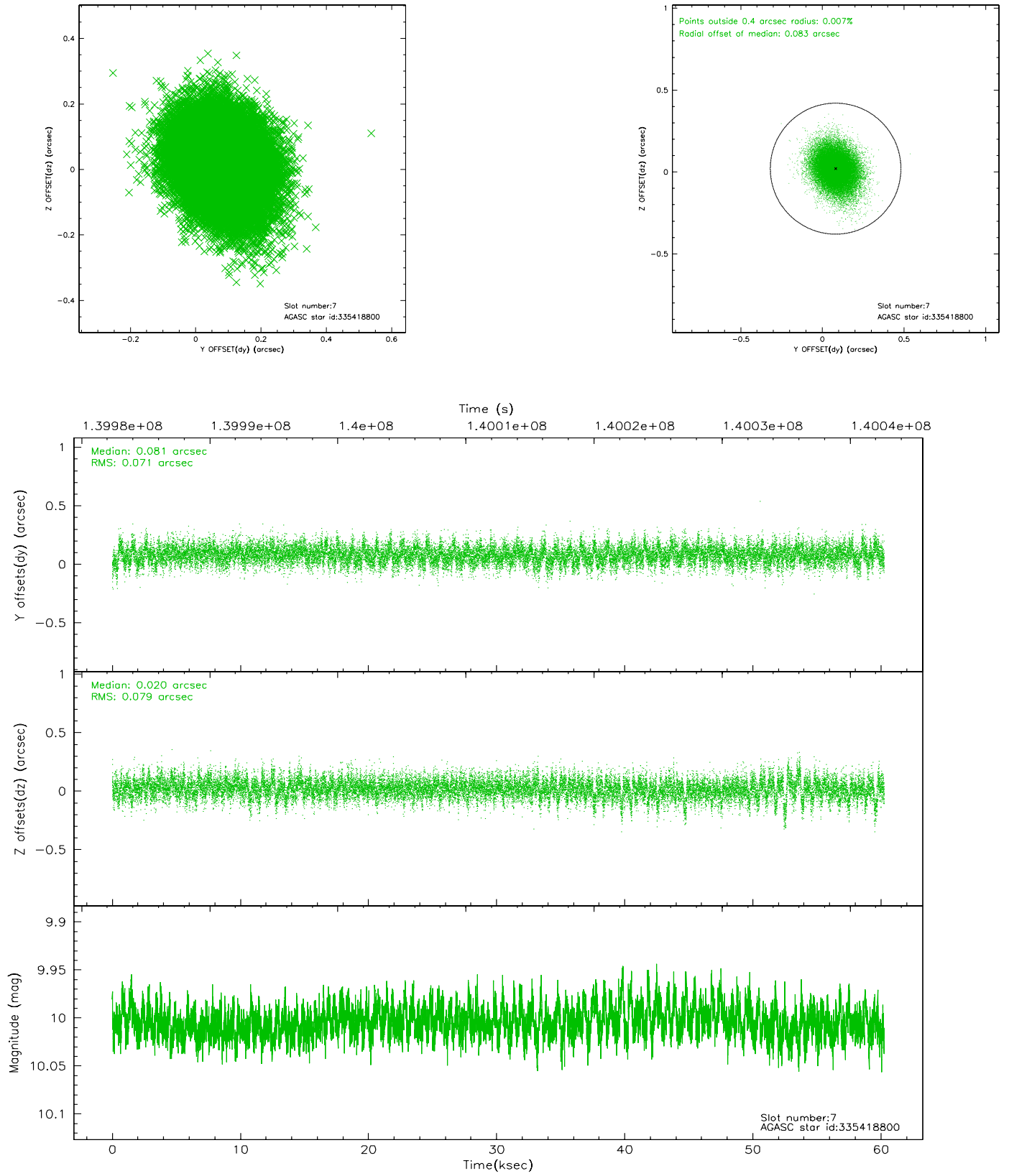
2.4.3 Slot 5



2.4.4 Slot 6

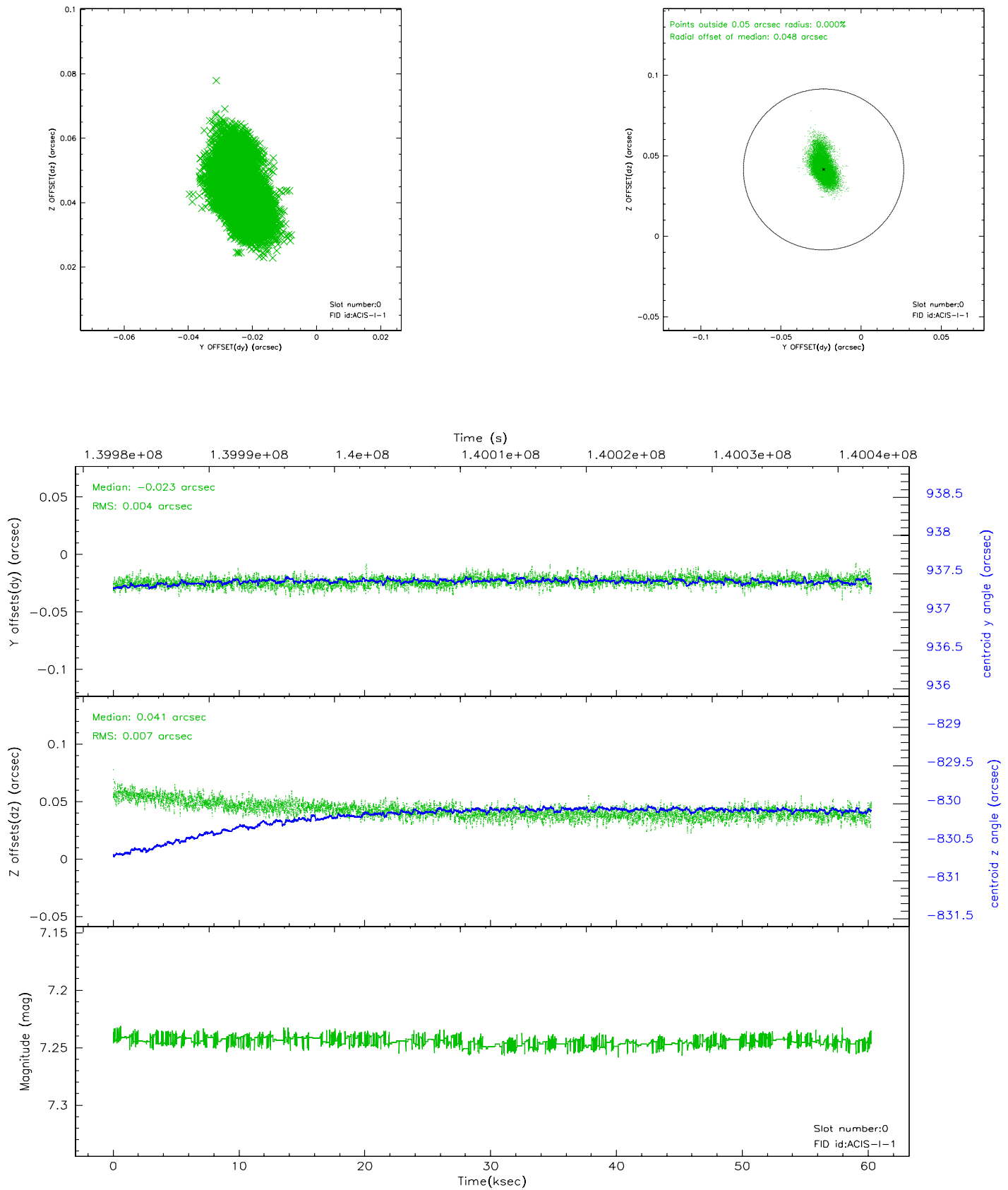


2.4.5 Slot 7

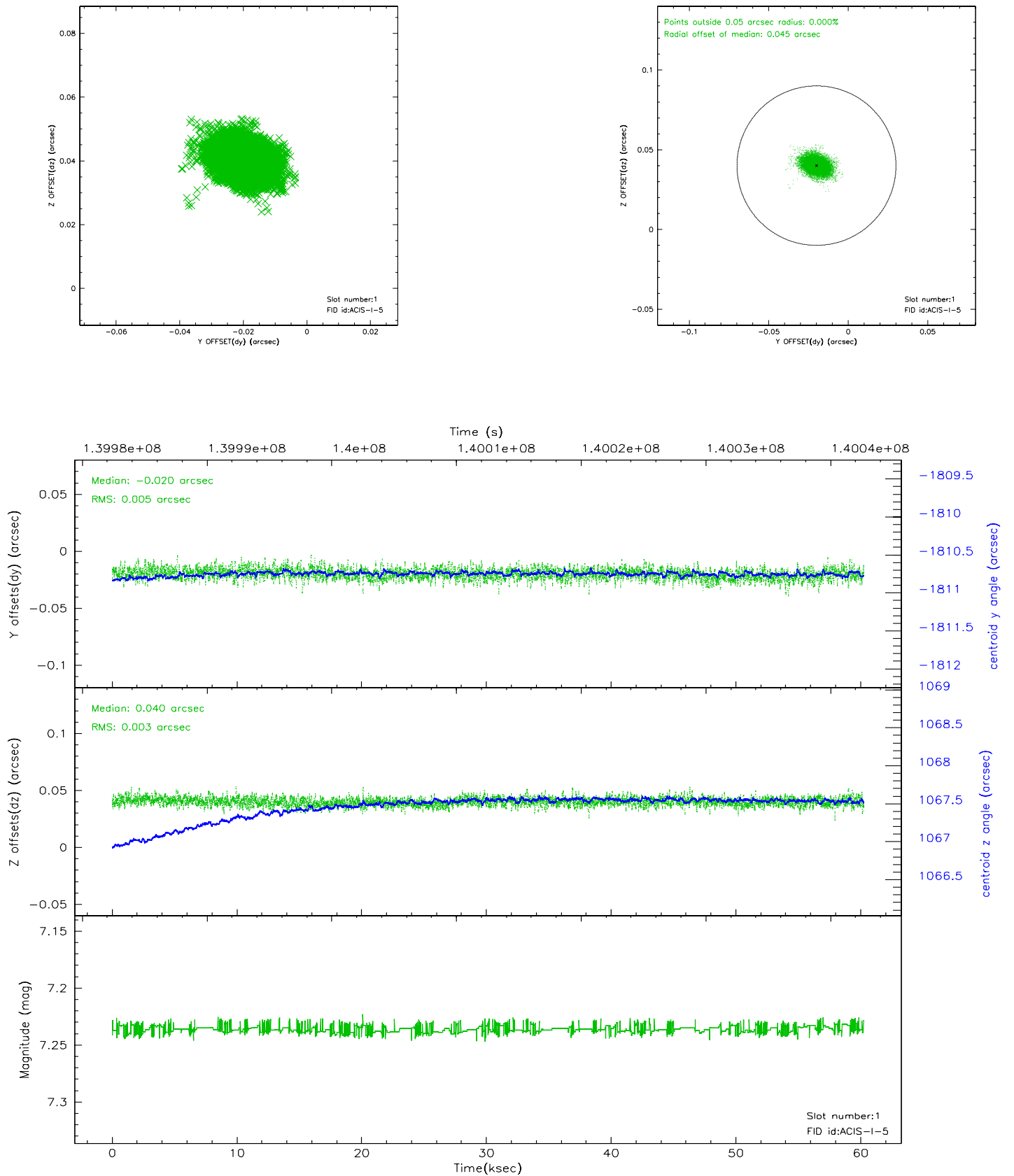


2.5 FID Slots

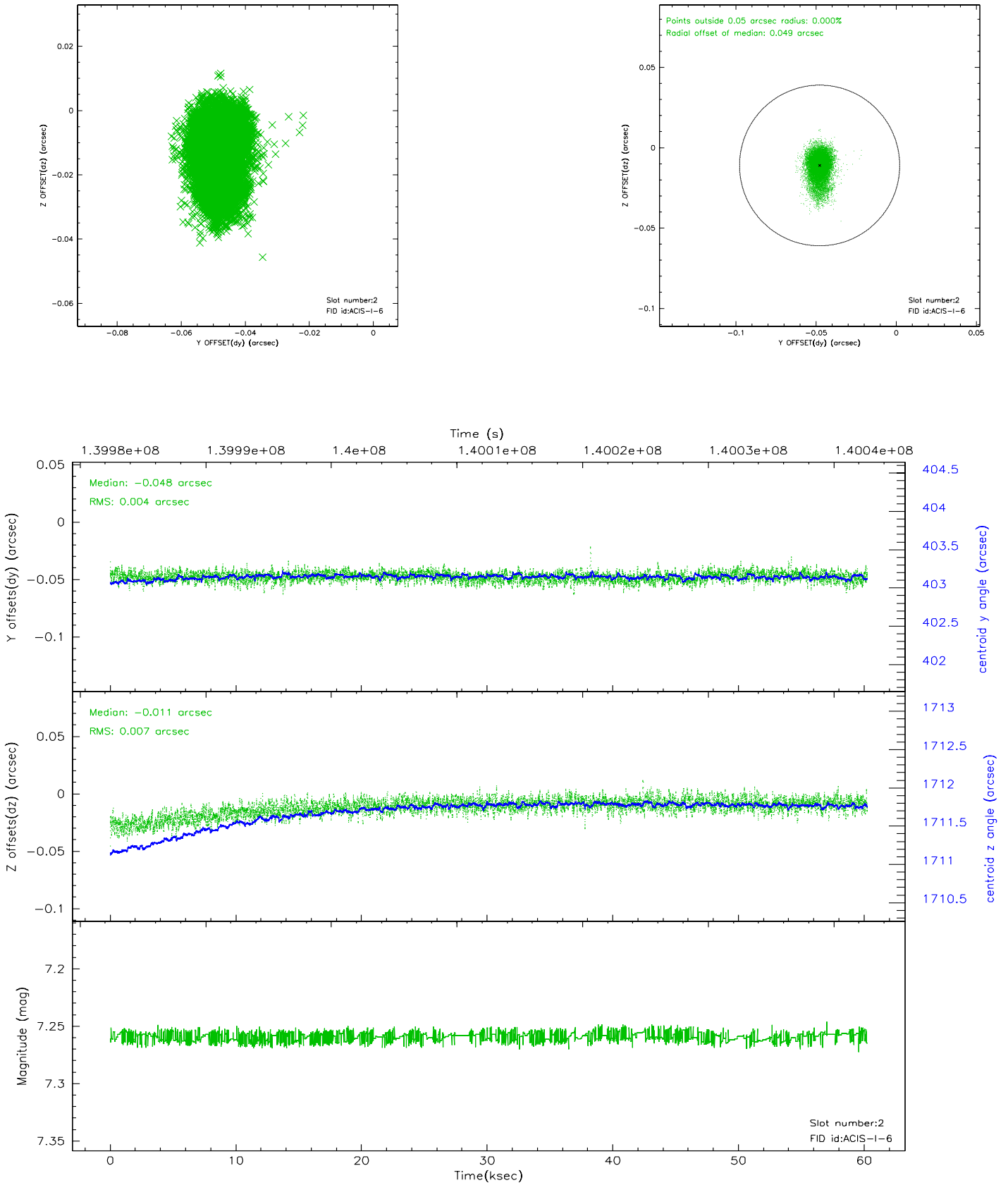
2.5.1 Slot 0



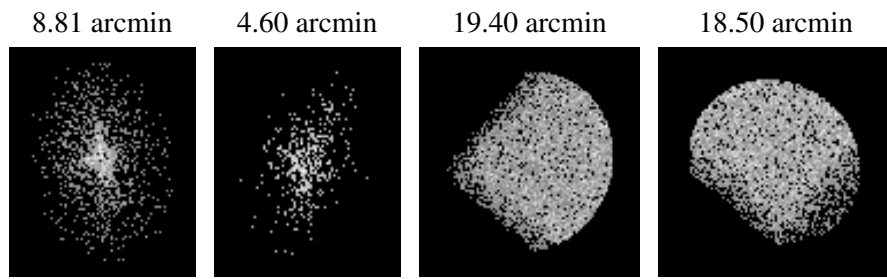
2.5.2 Slot 1



2.5.3 Slot 2



3 Point Sources



A Summary

A.1 Status

V&V Scientist	Beth Sundheim
V&V Date (YYYY-MM-DD)	2006.09.19
V&V Edition	1
V&V Disposition and Status	OK
V&V Charge Time	59.214

A.2 Comments