

# V&V Reference Report

## L2 ASCDS Version : 8.4.5

Observation 3292 - L2 Version 4  
Chandra X-Ray Center

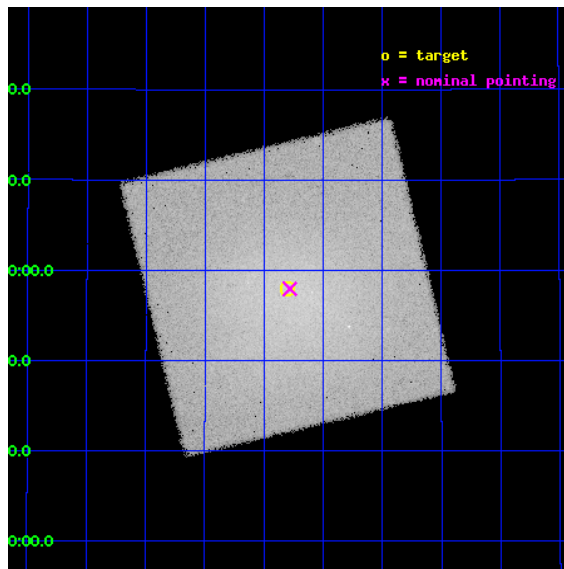
L2 Processing Date : Oct 7 2012

## Contents

<b>1</b>	<b>Front</b>	<b>2</b>
<b>2</b>	<b>OBI</b>	<b>3</b>
2.1	OBI . . . . .	3
2.1.1	Images . . . . .	3
2.1.2	Parameters . . . . .	4
2.1.3	Events . . . . .	4
2.2	Compared Parameters . . . . .	5
2.3	Aspect . . . . .	6
2.4	Star Slots . . . . .	9
2.4.1	Slot 3 . . . . .	9
2.4.2	Slot 4 . . . . .	10
2.4.3	Slot 5 . . . . .	11
2.4.4	Slot 6 . . . . .	12
2.4.5	Slot 7 . . . . .	13
2.5	FID Slots . . . . .	14
2.5.1	Slot 0 . . . . .	14
2.5.2	Slot 1 . . . . .	15
2.5.3	Slot 2 . . . . .	16
<b>A</b>	<b>Summary</b>	<b>17</b>
A.1	Status . . . . .	17
A.2	Comments . . . . .	17

# 1 Front

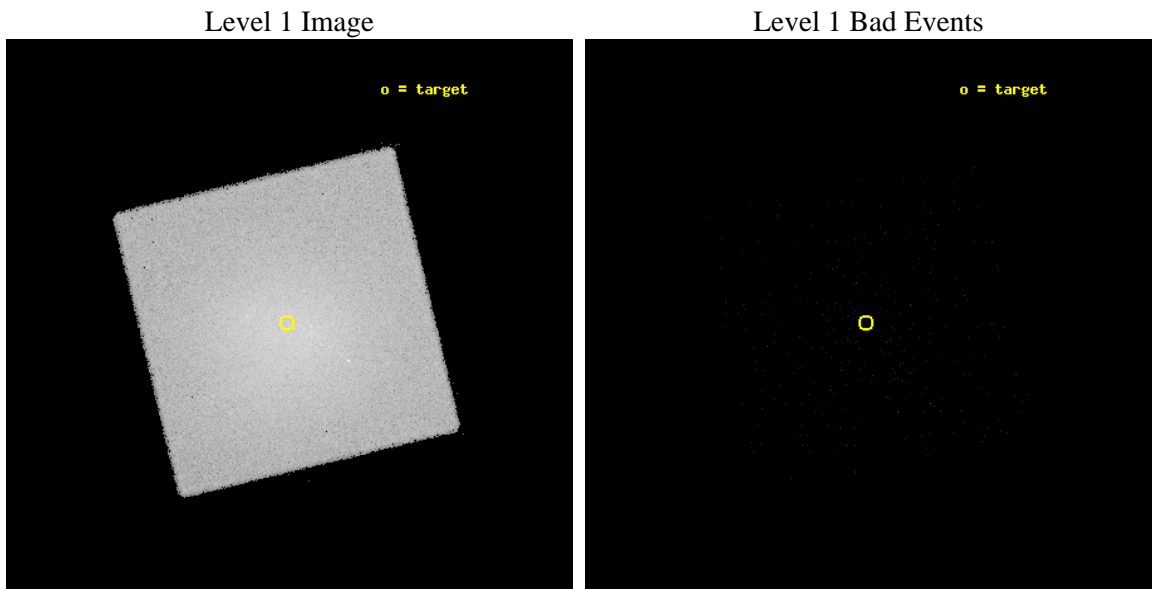
seq_num	890025	Sequence number
obs_id	3292	Observation id
title	AO3 CALIBRATION OBSERVATIONS OF THE COMA CLUSTER	Proposal title
observer	Dr. CXC Calibration	Principal investigator
object	COMA	Source name
ra_targ	194.95	Observer's specified target RA [deg]
dec_targ	27.966667	Observer's specified target Dec [deg]
ra_nom	194.94513314055	Nominal RA [deg]
dec_nom	27.96595924444	Nominal Dec [deg]
roll_nom	211.50402894199	Nominal Roll [deg]
revision	4	Processing version of data
ontime	9981.7066569328	[s]
liveltime	9915.3080990702	Ontime multiplied by DTCOR
l2events	446331	Number of level 2 events



## 2 OBI

### 2.1 OBI

#### 2.1.1 Images



### 2.1.2 Parameters

obi_num	0	Obi number	sched_exp_time	10000.000000	[s] Scheduled observation exposure time
ascdsver	8.4.5	Processing system revision	ontime	9981.7066569328	[s]
caldbver	4.5.2	&#160	l1events	597495	Number of level 1 events
date	2012-10-07T08:08:43	Date and time of file creation			
revision	4	Processing version of data			

### 2.1.3 Events

#### Level 1 Events

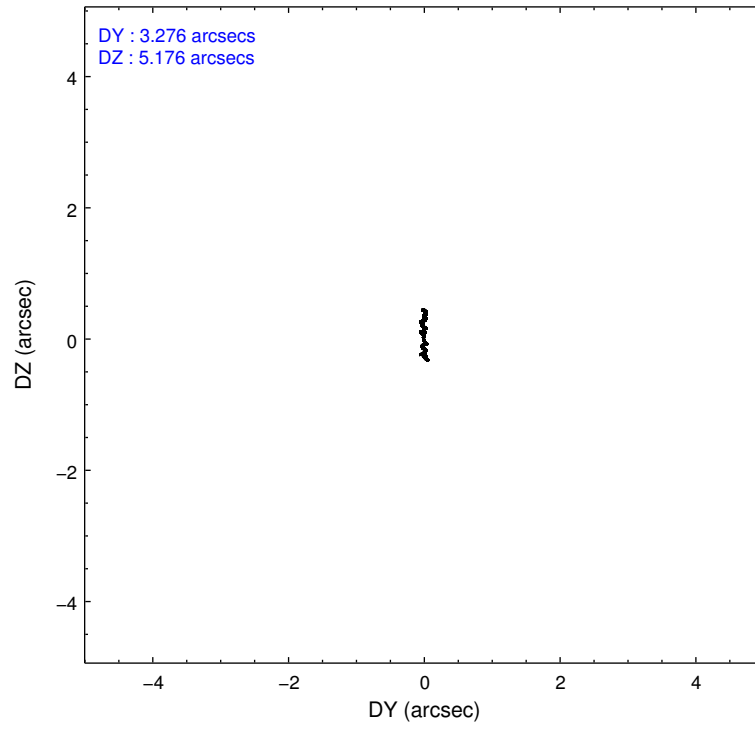
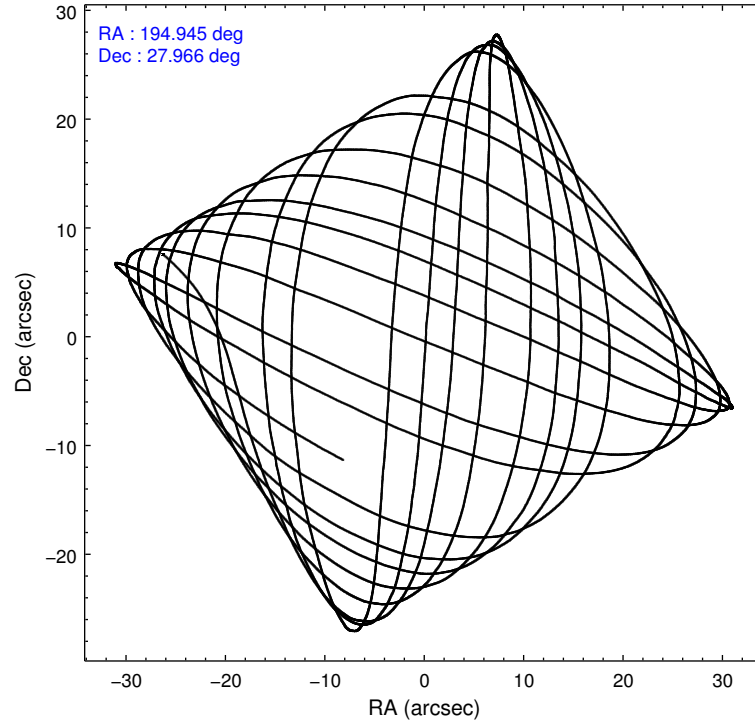
	<b>segment 0</b>
level 1 events	597495
rejected events	5564
rejected %	0%

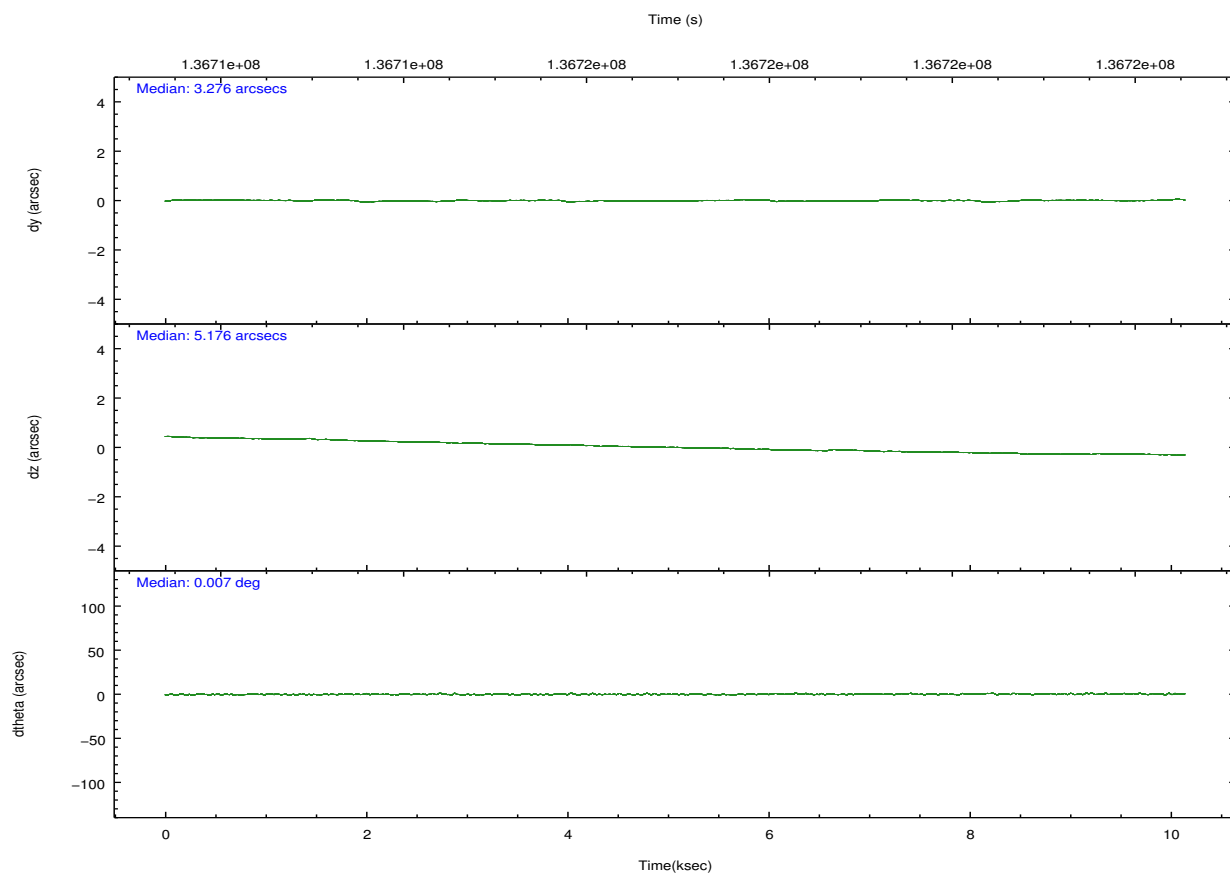
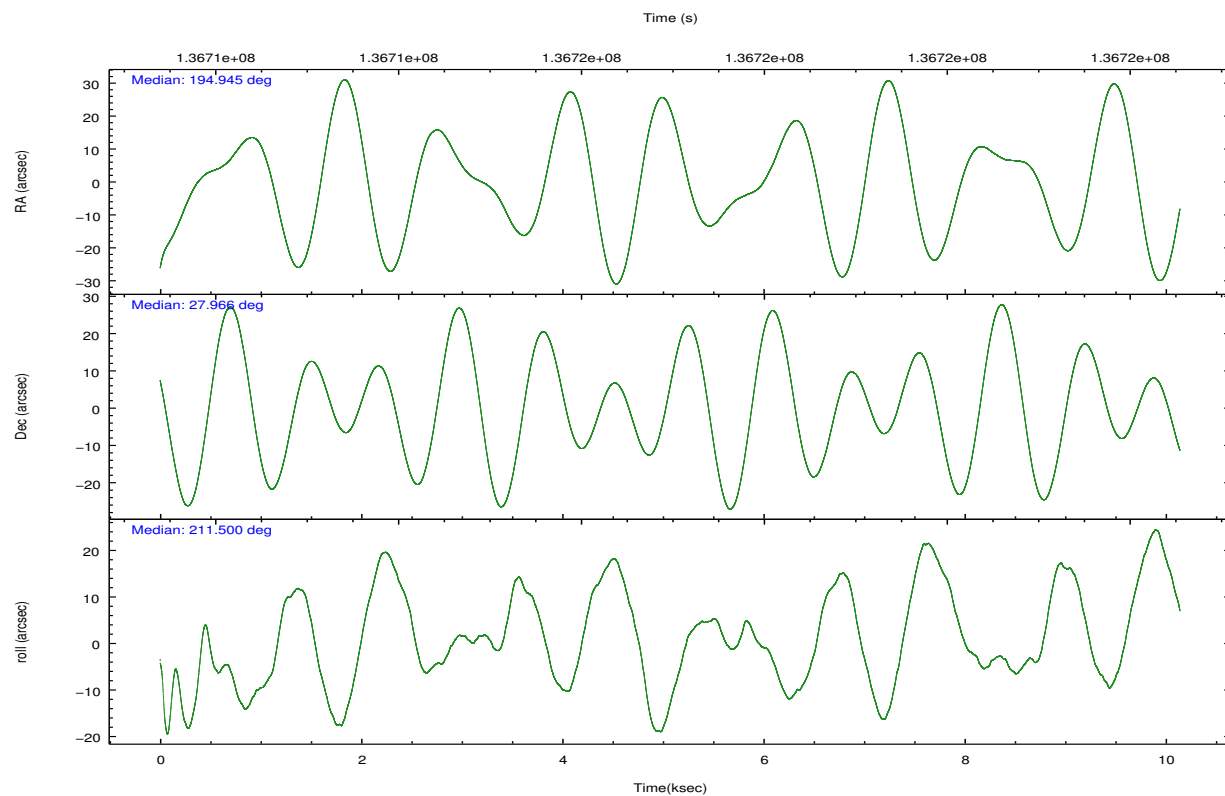


## 2.2 Compared Parameters

Parameter	Planned	Actual	Parameter	Planned	Actual
Instrument	HRC	HRC	Obspar format version number	7	7
Detector	HRC-I	HRC-I	Obspar file type	PREDICTED	ACTUAL
Grating	NONE	NONE	Obspar update status	NONE	UPDATED
Data mode	OBSERVING	OBSERVING			
Observation mode	POINTING	POINTING			
[deg] Pointing RA	194.959348	194.9451331405485			
[deg] Pointing Dec	27.990138	27.96595924444039			
[deg] Pointing Roll	211.592823	211.5040289419941			
[s] Window start time (MET)	134006464.184000	134006464.184000			
[s] Window stop time (MET)	139190464.184000	139190464.184000			
[mm] SIM focus pos	-1.040293	-1.038866356238299			
[mm] SIM defocus	0	0.001426264420575141			
[mm] SIM translation stage pos	126.985494	126.9829799899862			
[mm] SIM translation stage offset	0	0.002508901615314585			
[s] Observation start time (MET)	136712040.184000	136711214.68575			
Observation start date	2002-05-02T07:32:56	2002-05-02T07:20:14			
[s] Observation end time (MET)	136722040.184000	136722541.96121			
Observation end date	2002-05-02T10:19:36	2002-05-02T10:29:01			

## 2.3 Aspect



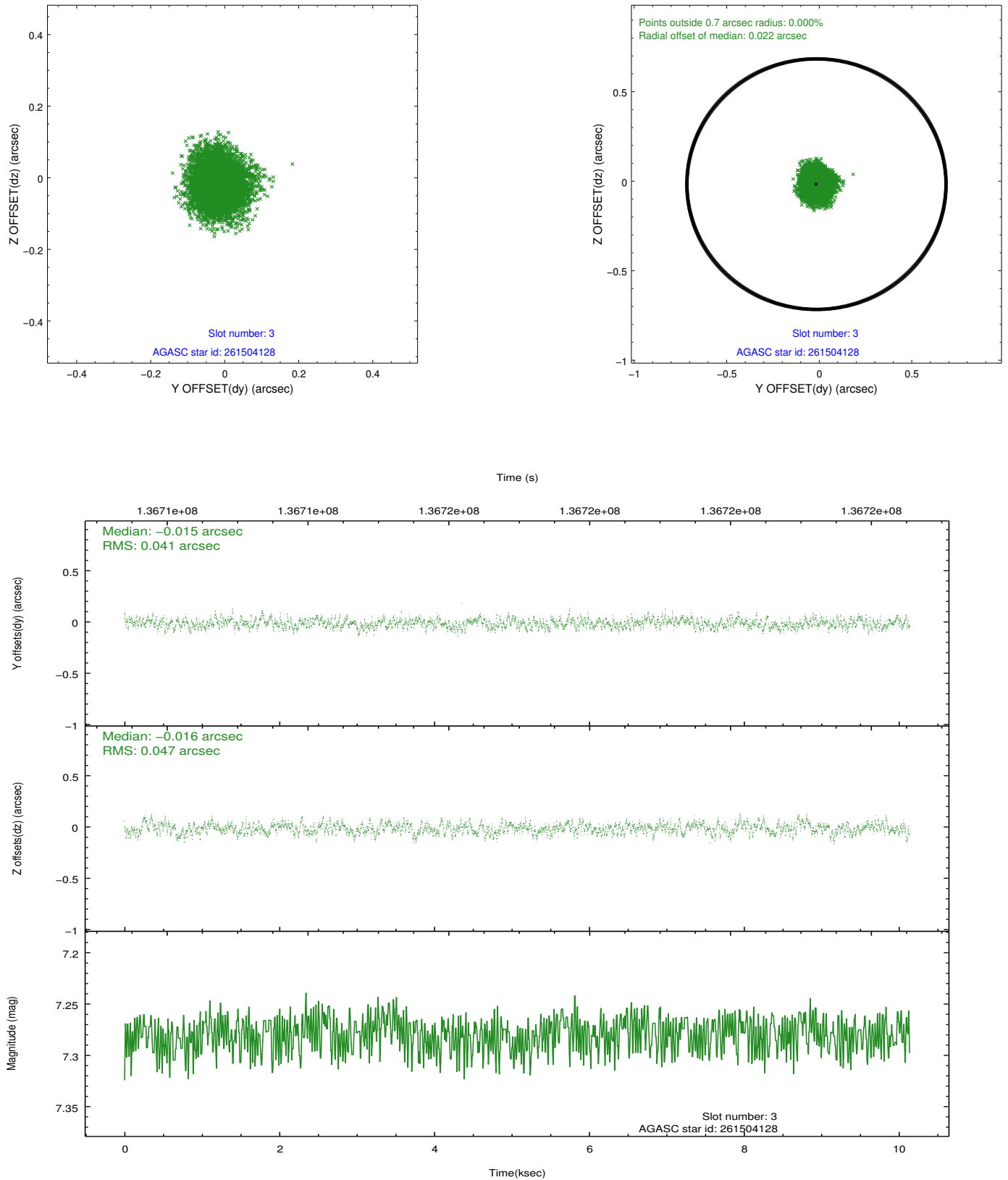


### Slot Statistics

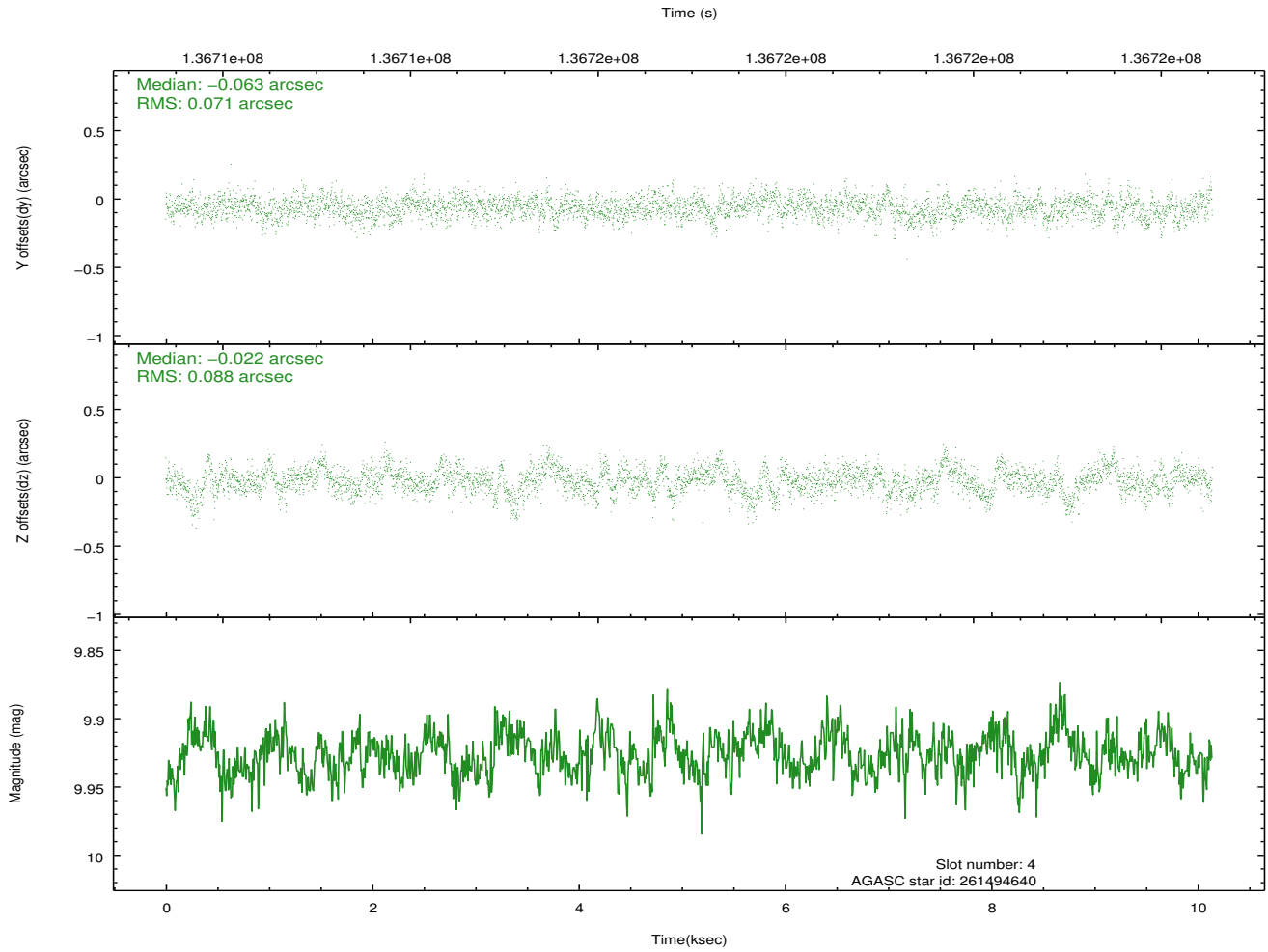
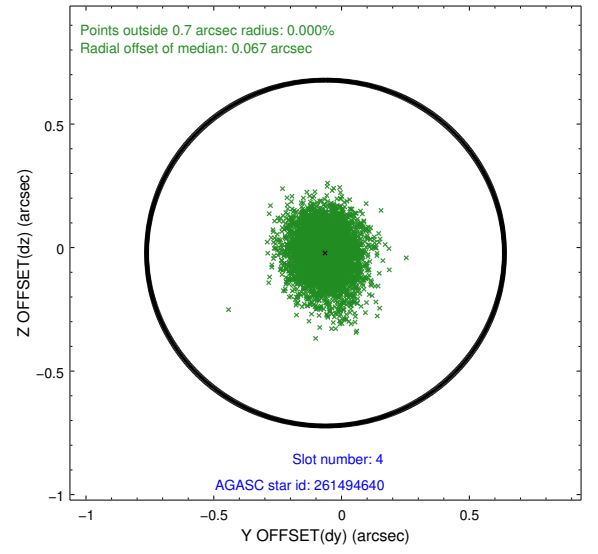
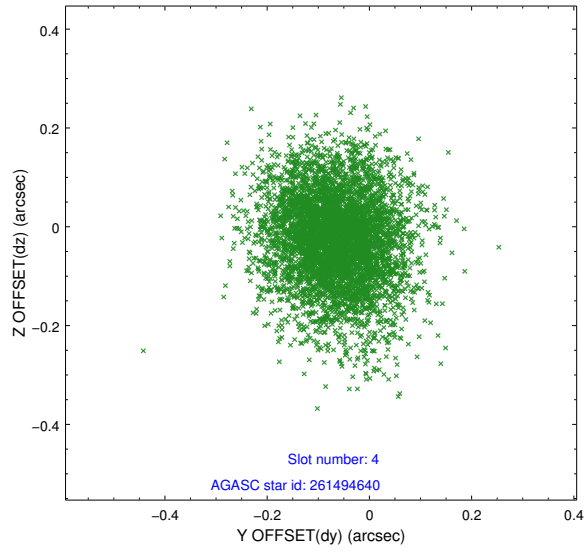
slot	status	id	mag	n_pts	med_dy	med_dz	dr1	dr2	ra	dec	mean_y	mean_z
0	FID	HRC-I-1	6.97	2474	0.000	0.042	0.013	0.020	0.000000	0.000000	-758.72	-1292.97
1	FID	HRC-I-2	7.01	2474	0.076	-0.042	0.008	0.013	0.000000	0.000000	853.68	-1295.11
2	FID	HRC-I-3	7.06	2474	0.043	-0.090	0.008	0.015	0.000000	0.000000	-1186.87	1010.94
3	GUIDE	261504128	7.28	4947	-0.015	-0.016	0.067	0.106	194.640935	28.319570	236.89	-1539.42
4	GUIDE	261494640	9.93	4933	-0.063	-0.022	0.119	0.199	195.174515	28.510071	-1561.41	-1238.08
5	GUIDE	261495096	9.93	4947	-0.053	0.146	0.132	0.222	194.411078	28.430653	644.58	-2262.88
6	GUIDE	261498392	8.32	4947	0.212	-0.073	0.065	0.108	194.888587	28.238913	-278.61	-880.34
7	GUIDE	261492080	9.28	4947	-0.082	-0.030	0.100	0.162	194.976344	28.631585	-1256.50	-1938.45

## 2.4 Star Slots

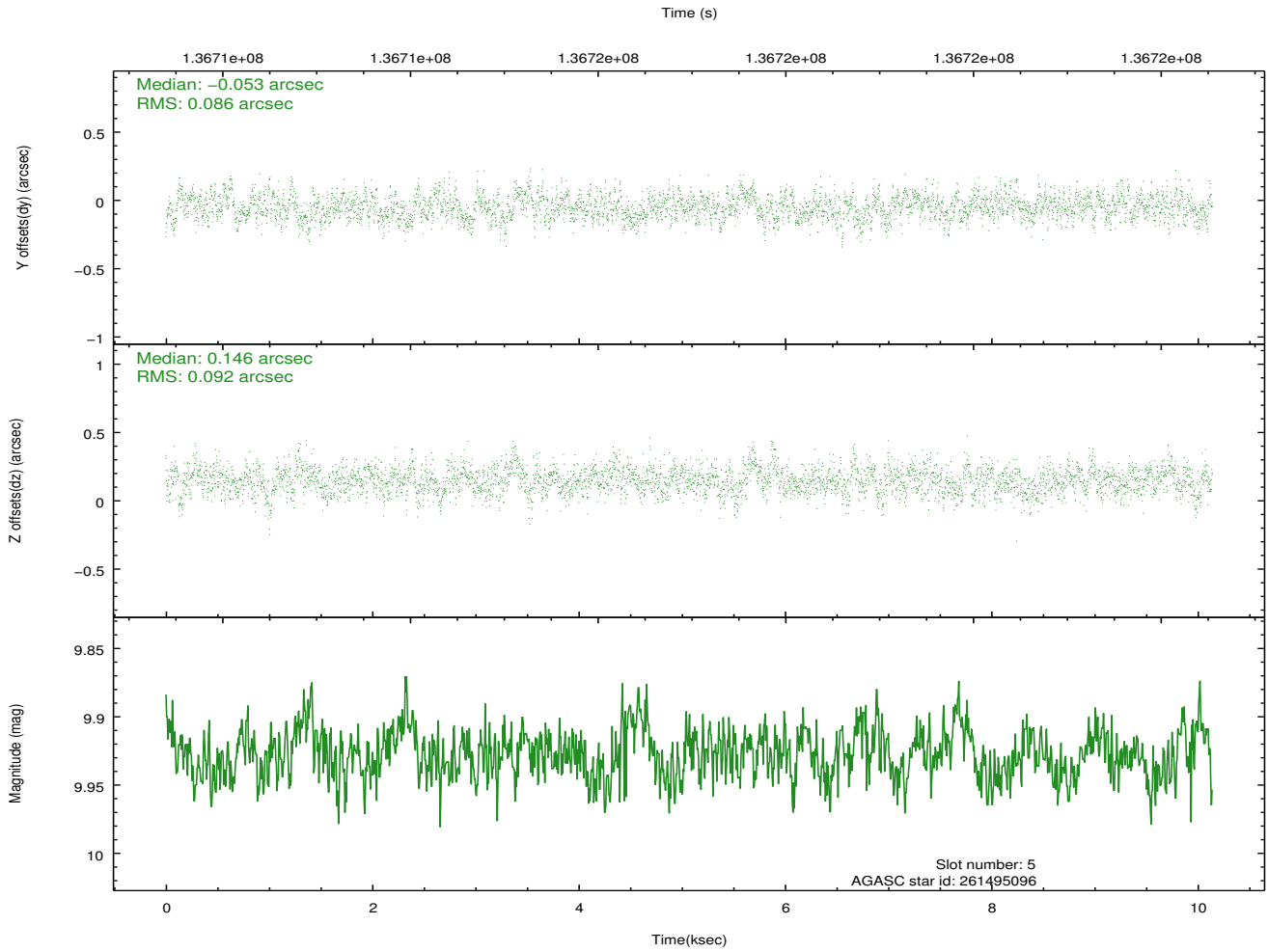
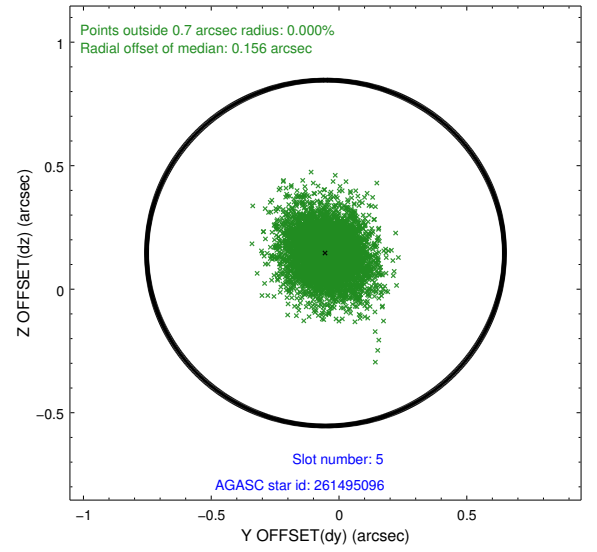
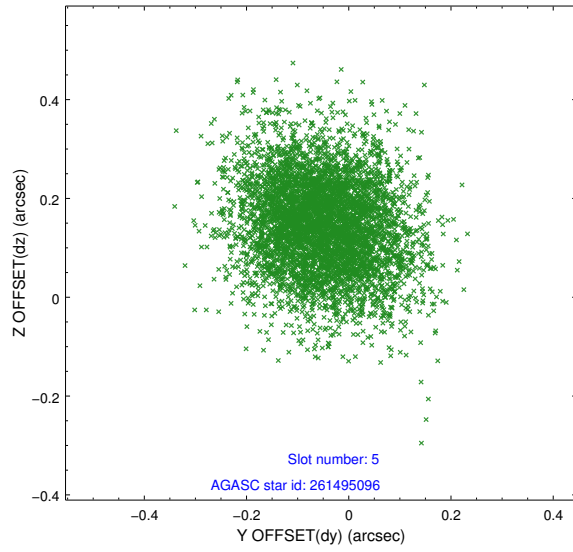
### 2.4.1 Slot 3



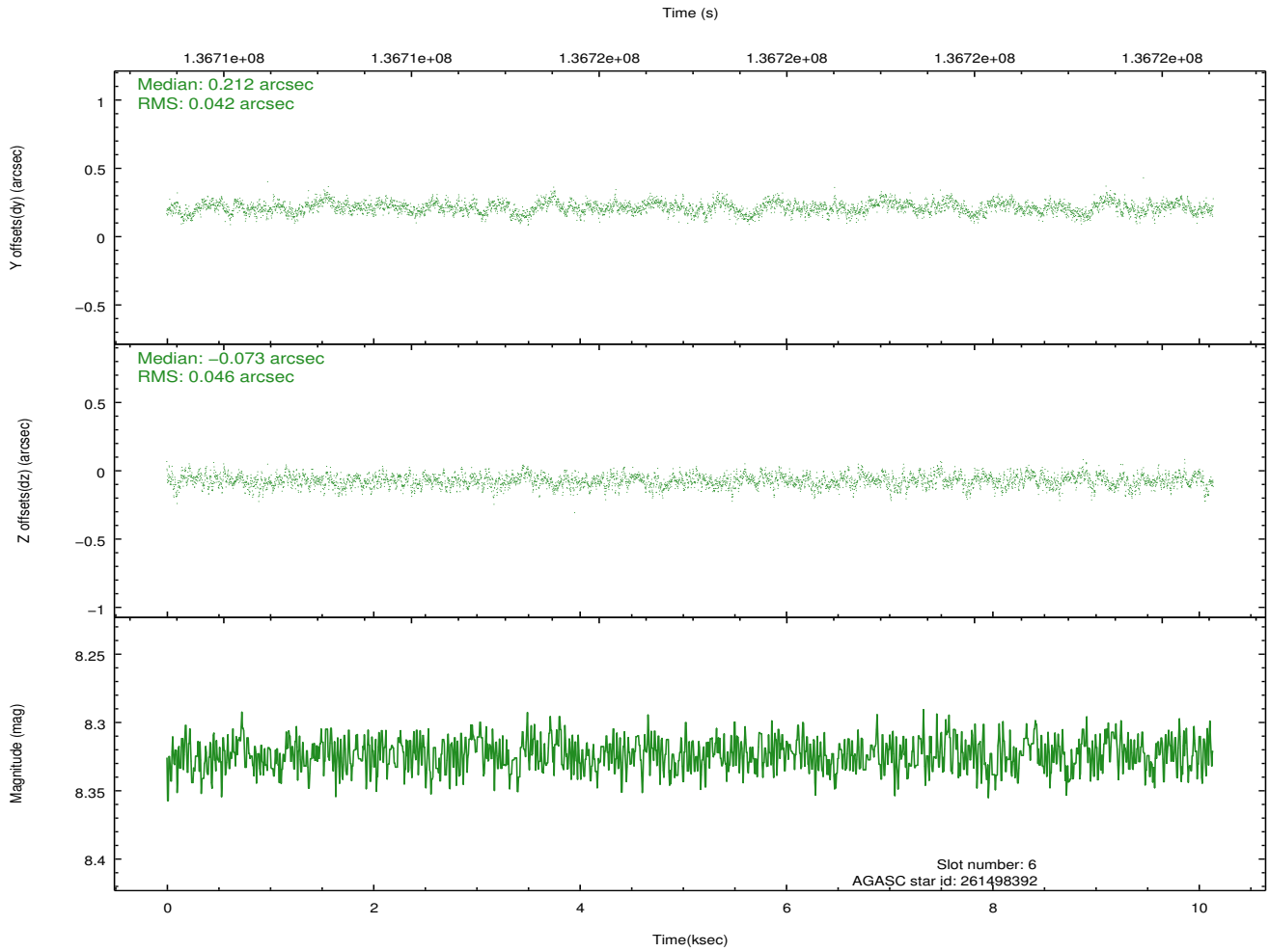
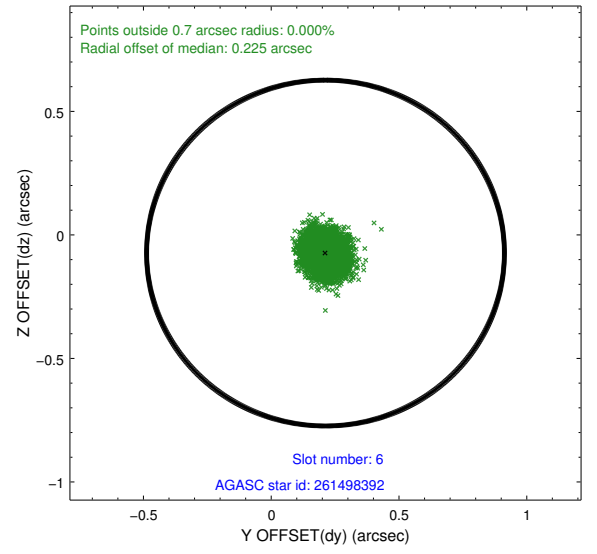
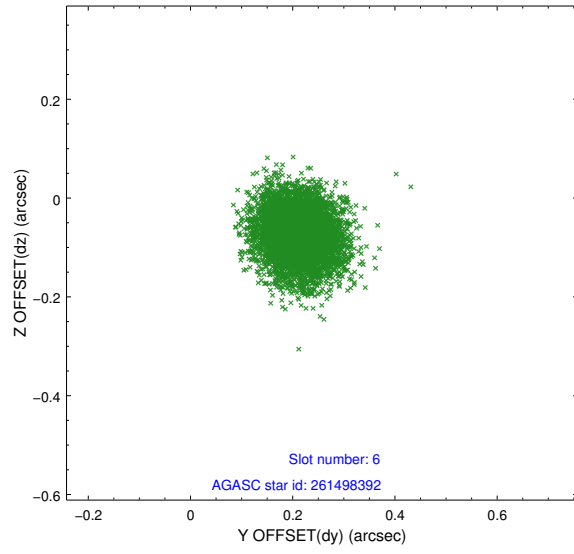
## 2.4.2 Slot 4



### 2.4.3 Slot 5

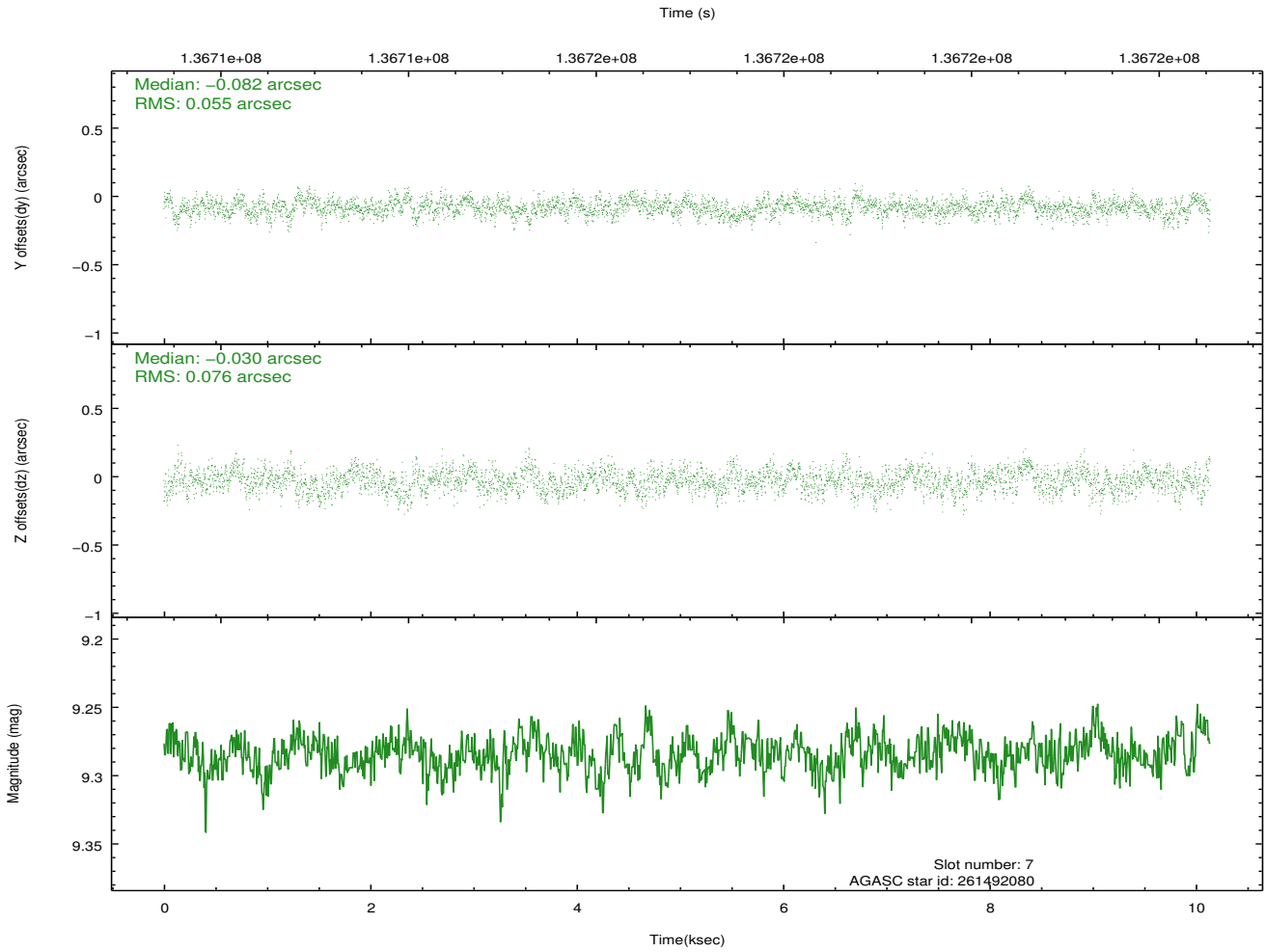
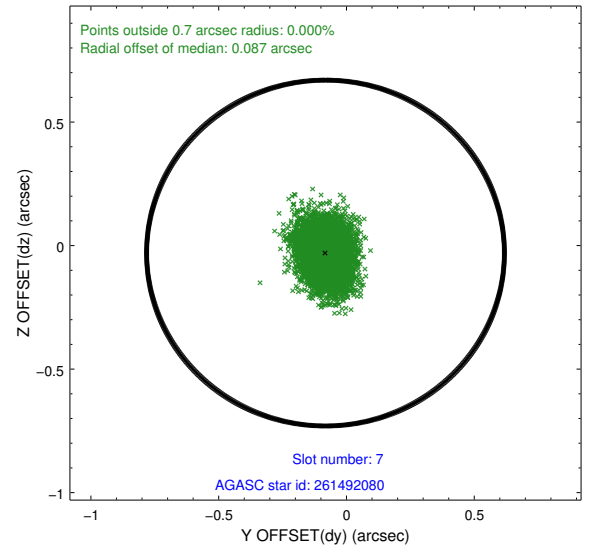
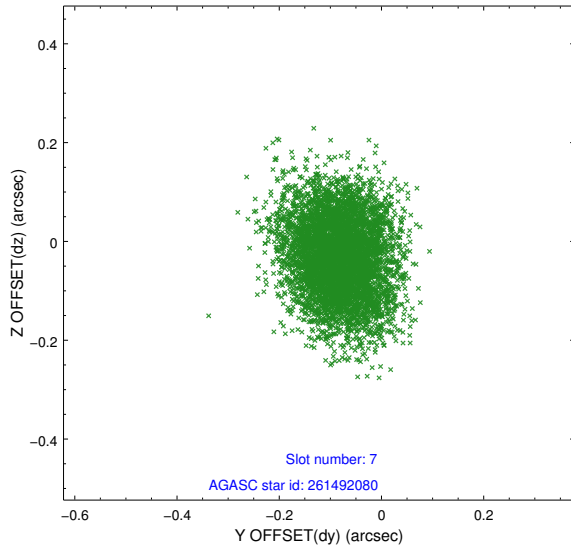


## 2.4.4 Slot 6



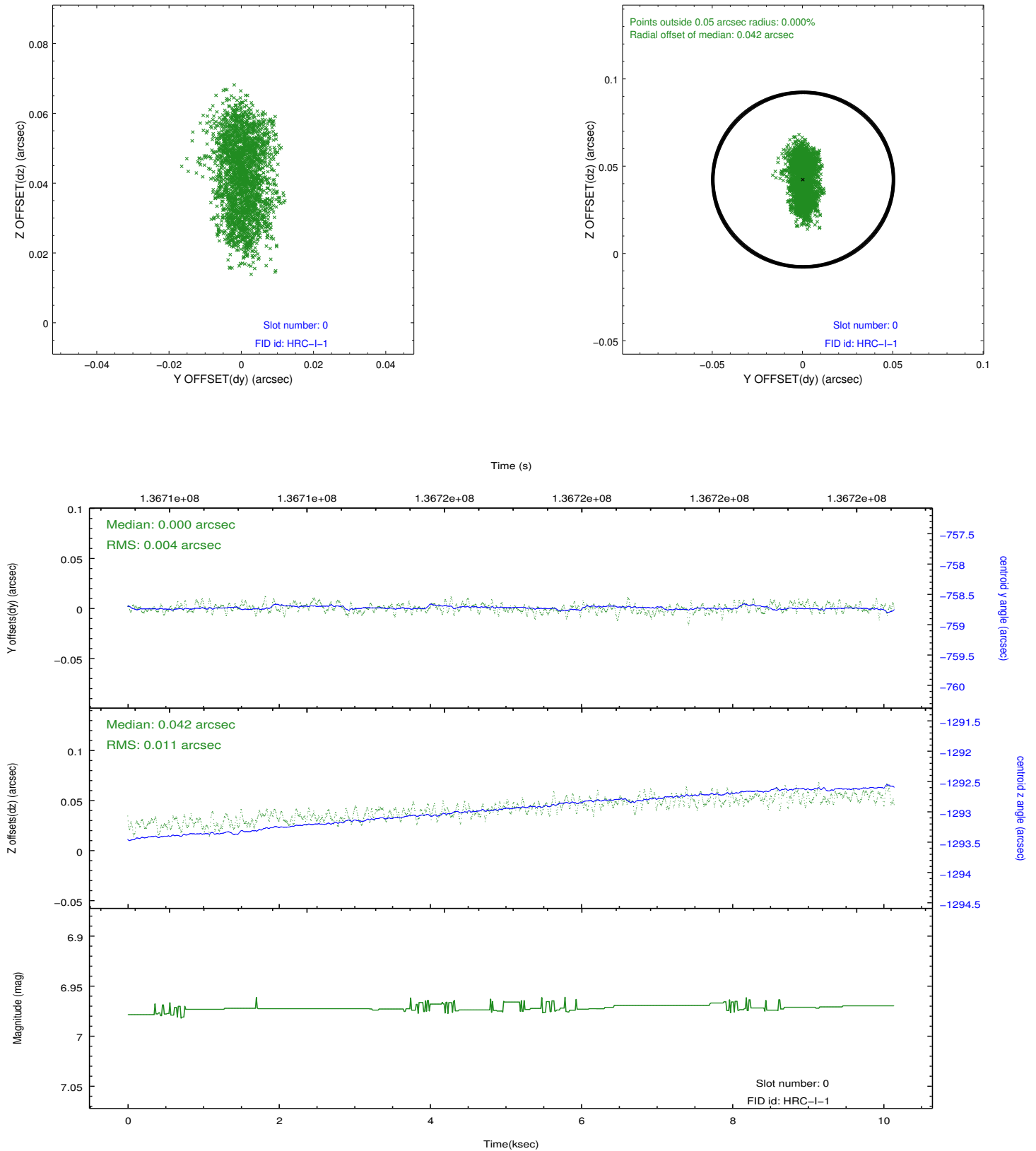


## 2.4.5 Slot 7

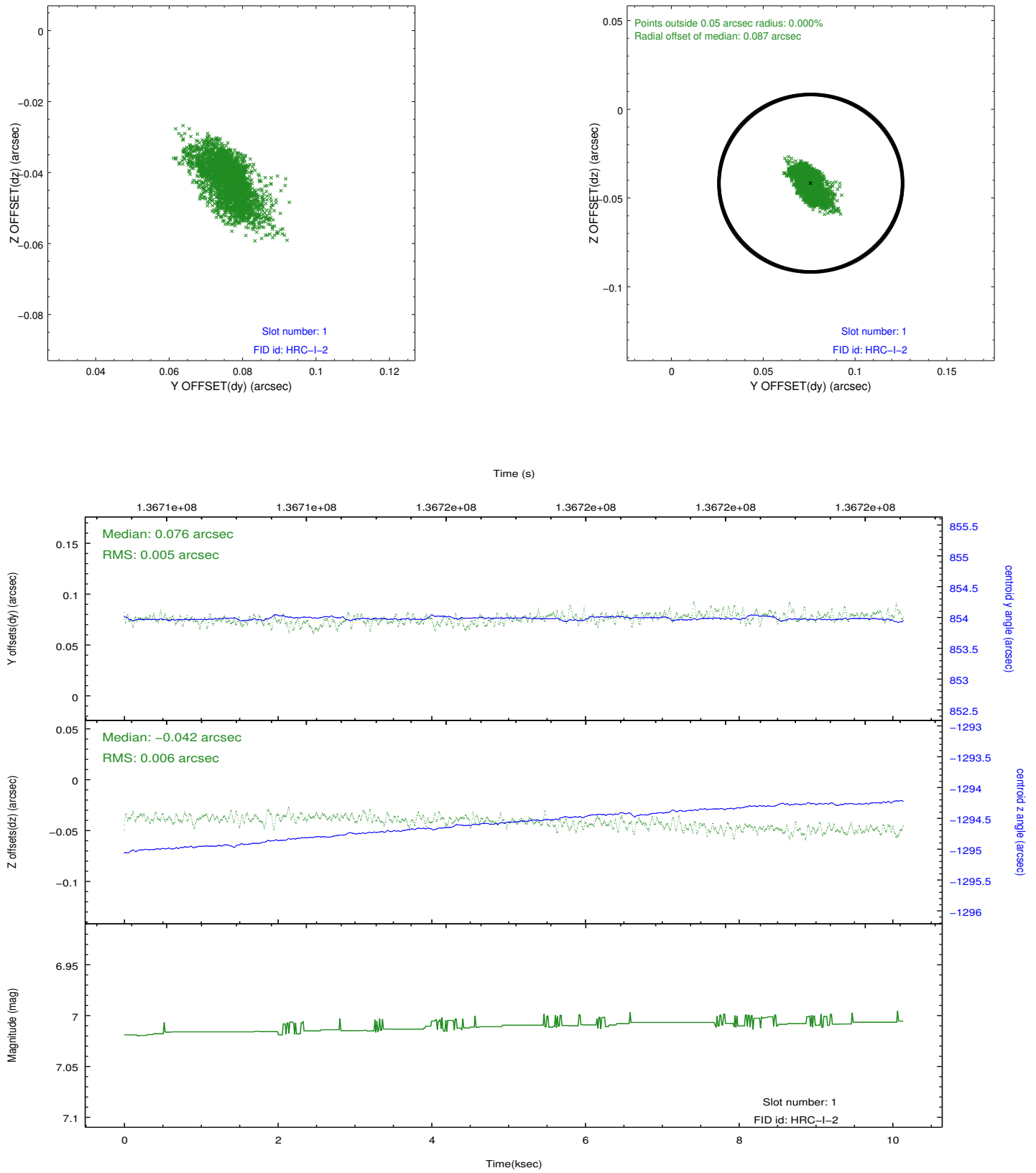


## 2.5 FID Slots

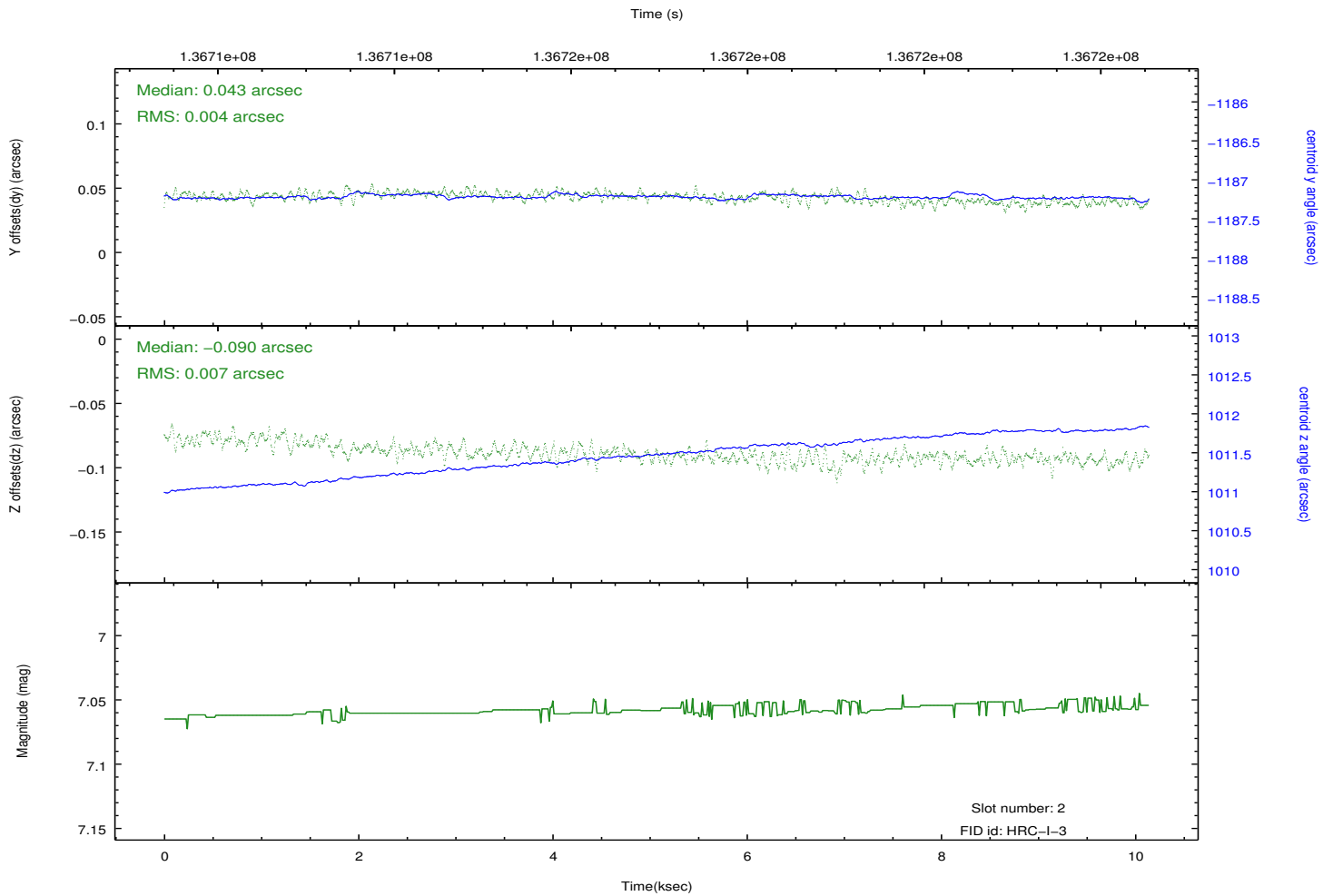
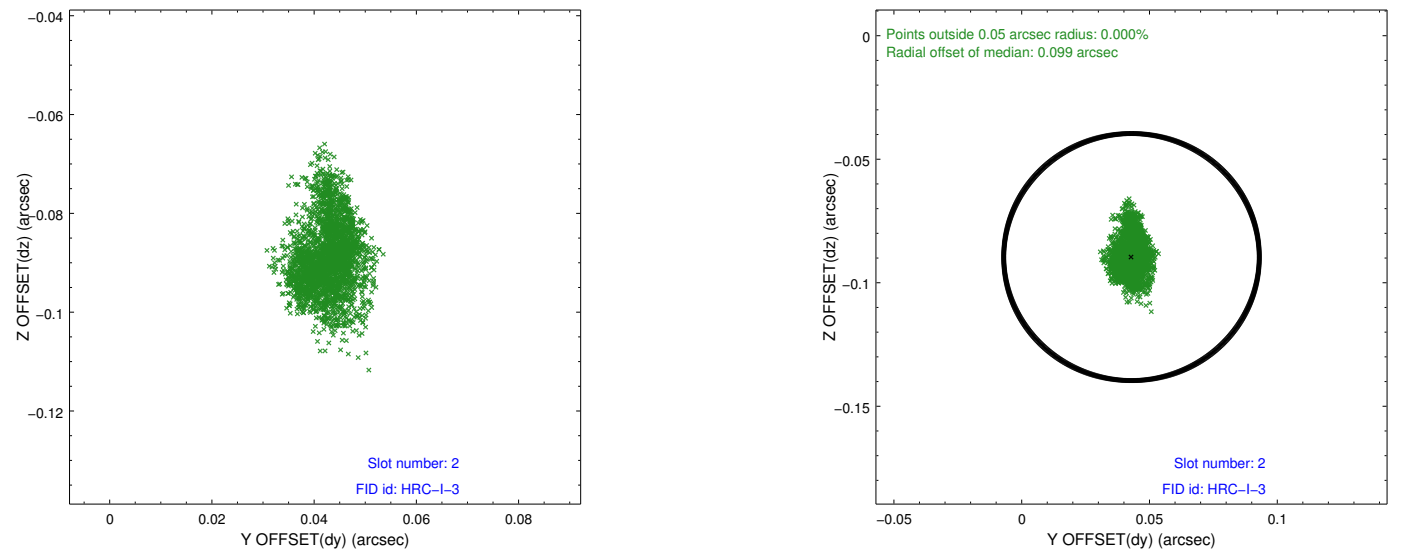
### 2.5.1 Slot 0



## 2.5.2 Slot 1



### 2.5.3 Slot 2



## A Summary

### A.1 Status

V&V Scientist	Beth Sundheim
V&V Date (YYYY-MM-DD)	2012.10.15
V&V Edition	1
V&V Disposition and Status	OK
V&V Charge Time	9.981

### A.2 Comments

Window preference met.