

V&V Reference Report

L2 ASCDS Version : 8.4.5

Observation 3262 - L2 Version 4
Chandra X-Ray Center

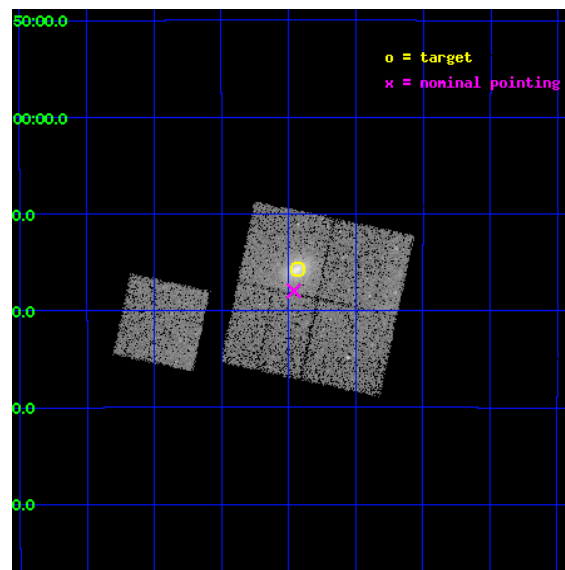
L2 Processing Date : Oct 21 2012

Contents

1	Front	2
2	OBI	3
2.1	OBI	3
2.1.1	Images	3
2.1.2	Bias	3
2.1.3	Parameters	4
2.1.4	Events	4
2.2	Compared Parameters	5
2.3	Aspect	6
2.4	Star Slots	9
2.4.1	Slot 3	9
2.4.2	Slot 4	10
2.4.3	Slot 5	11
2.4.4	Slot 6	12
2.4.5	Slot 7	13
2.5	FID Slots	14
2.5.1	Slot 0	14
2.5.2	Slot 1	15
2.5.3	Slot 2	16
A	Summary	17
A.1	Status	17
A.2	Comments	17

1 Front

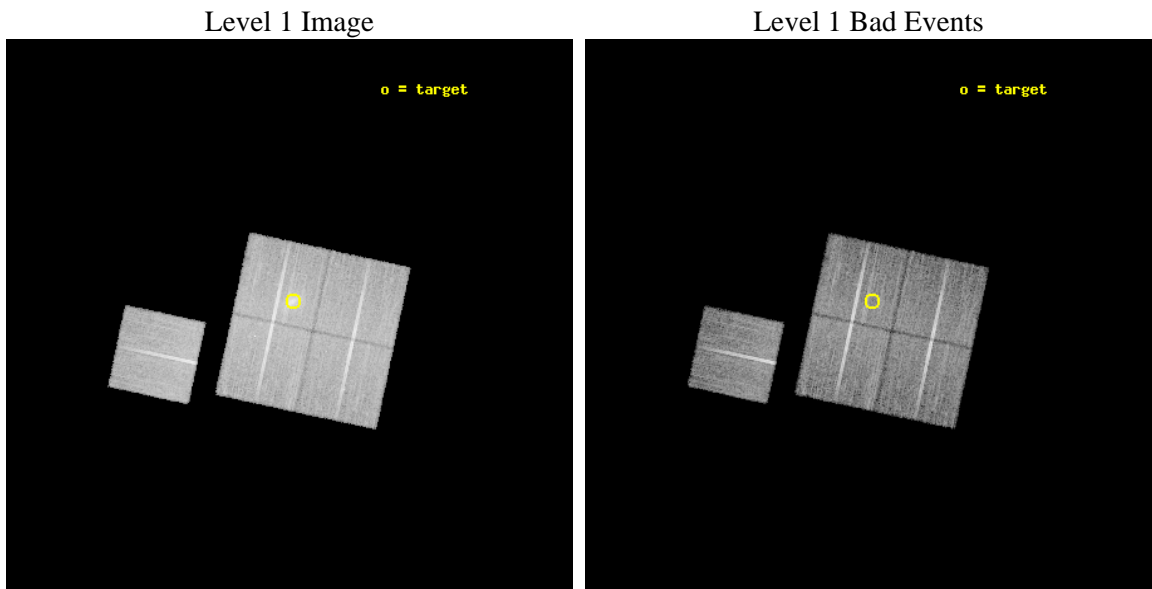
seq_num	800262	Sequence number
obs_id	3262	Observation id
title	MACS: THE X-RAY PROPERTIES OF THE MOST MASSIVE GALAXY CLUSTERS AT $Z>0.3$	Proposal title
observer	Dr. Harald Ebeling	Principal investigator
object	MACSJ0035.4-2015	Source name
dtcycle	0	
cycle	P	events from which exps? Prim/Second/Both
ra_targ	8.85875	Observer's specified target RA [deg]
dec_targ	-20.262222	Observer's specified target Dec [deg]
ra_nom	8.8651677155546	Nominal RA [deg]
dec_nom	-20.299354591762	Nominal Dec [deg]
roll_nom	282.18017794077	Nominal Roll [deg]
revision	4	Processing version of data
ontime	21640.936097413	Sum of GTIs [s]
livetime	21358.181335475	Livetime [s]
ontime0	21644.07705763	Sum of GTIs [s]
ontime1	21644.077037752	Sum of GTIs [s]
ontime2	21650.358968198	Sum of GTIs [s]
ontime3	21640.936097413	Sum of GTIs [s]
ontime6	21644.077097565	Sum of GTIs [s]
l2events	58487	Number of level 2 events



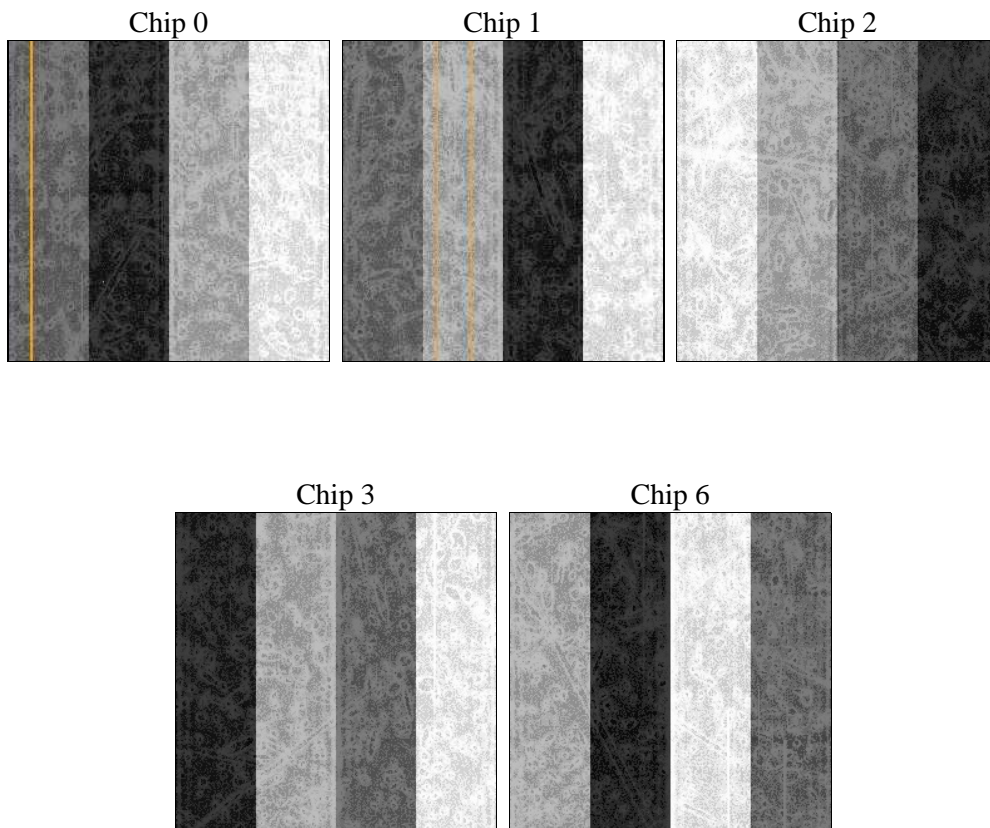
2 OBI

2.1 OBI

2.1.1 Images



2.1.2 Bias



2.1.3 Parameters

obi_num	0	Obi number	sched_exp_time	21500.000000	[s] Scheduled observation exposure time
ascdsver	8.4.5	Processing system revision	ontime	21640.936097413	Sum of GTIs [s]
caldbver	4.5.2	 	ontime0	21644.07705763	Sum of GTIs [s]
date	2012-10-21T03:19:55	Date and time of file creation	ontime1	21644.077037752	Sum of GTIs [s]
revision	4	Processing version of data	ontime2	21650.358968198	Sum of GTIs [s]
			ontime3	21640.936097413	Sum of GTIs [s]
			ontime6	21644.077097565	Sum of GTIs [s]
			l1events	588302	Number of level 1 events

2.1.4 Events

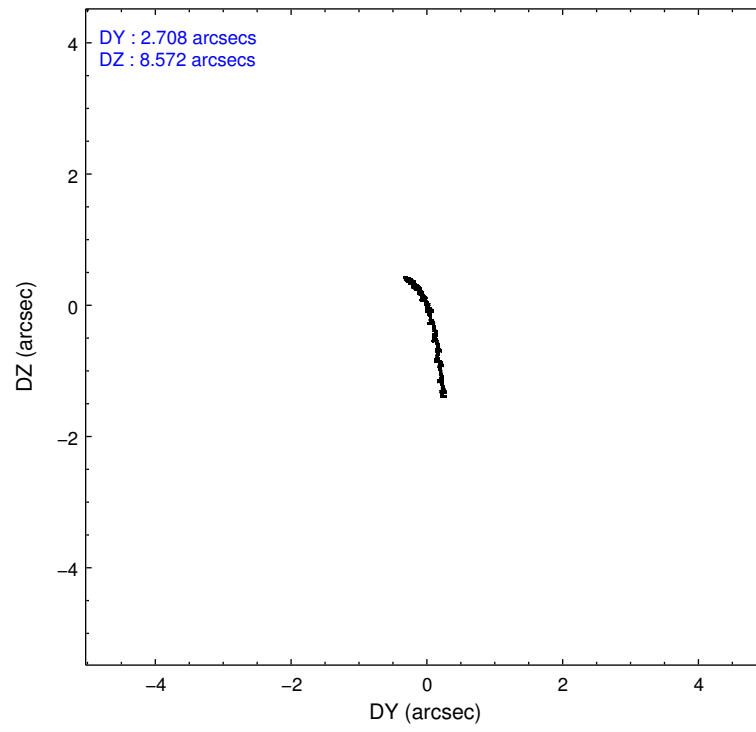
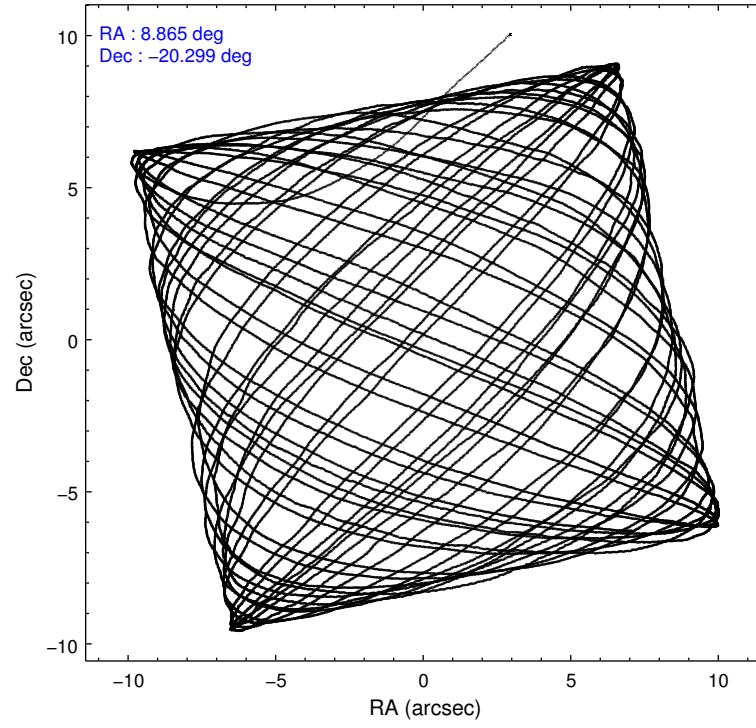
	ccd 0	ccd 1	ccd 2	ccd 3	ccd 6
level 1 events	108439	108160	124351	129501	117851
rejected events	97135	95413	112961	107749	106348
rejected %	89%	88%	90%	83%	90%

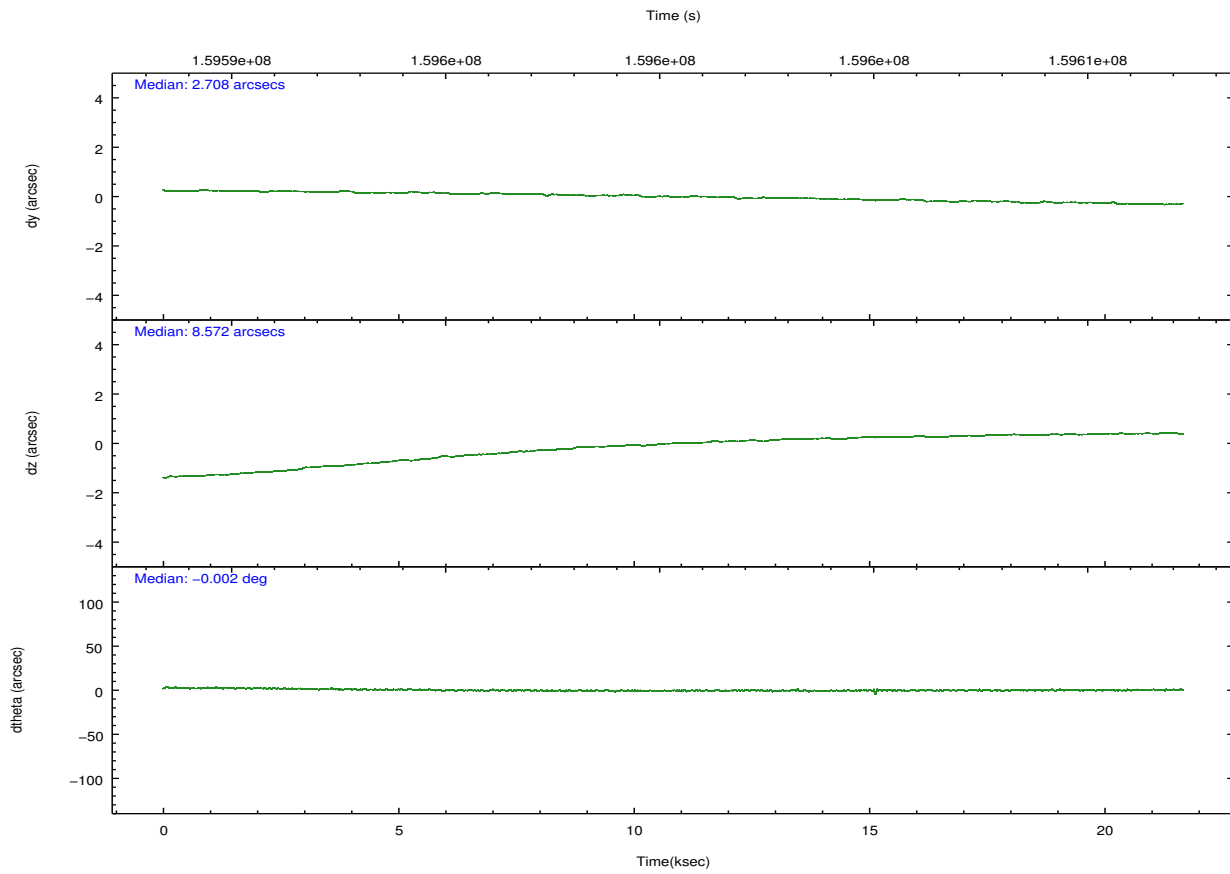
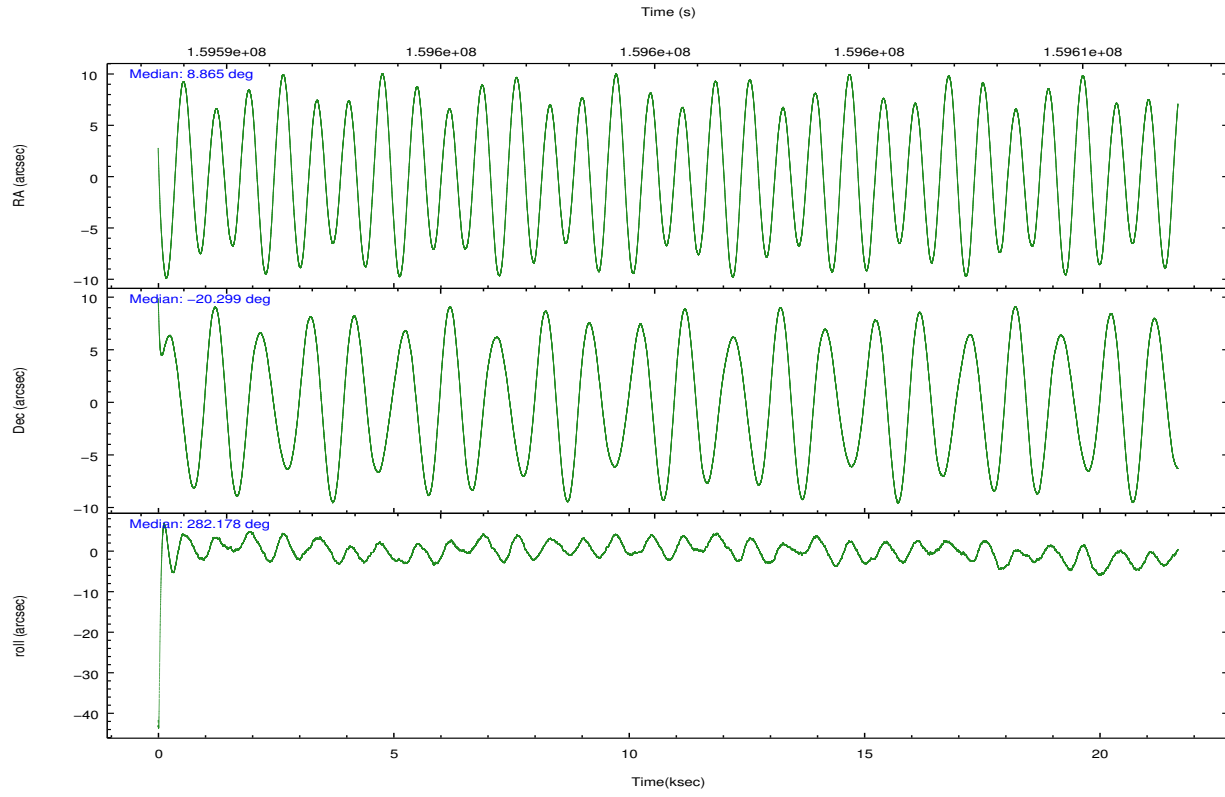
	ccd 0	ccd 1	ccd 2	ccd 3	ccd 6
grade 0 events	4036	4744	4308	13025	3948
	3%	4%	3%	10%	3%
grade 1 events	57	52	76	91	46
	0%	0%	0%	0%	0%
grade 2 events	2658	2738	2587	3353	2403
	2%	2%	2%	2%	2%
grade 3 events	1396	1446	1302	1618	1375
	1%	1%	1%	1%	1%
grade 4 events	1209	1473	1300	1585	1364
	1%	1%	1%	1%	1%
grade 5 events	3873	4093	3710	4468	4344
	3%	3%	2%	3%	3%
grade 6 events	2119	2486	2029	2363	2522
	1%	2%	1%	1%	2%
grade 7 events	93091	91128	109039	102998	101849
	85%	84%	87%	79%	86%

2.2 Compared Parameters

Parameter	Planned	Actual	Parameter	Planned	Actual
Instrument	ACIS	ACIS	Obspar format version number	7	7
Detector	ACIS-01236	ACIS-01236	Obspar file type	PREDICTED	ACTUAL
Grating	NONE	NONE	Obspar update status	NONE	UPDATED
Data mode	VFAINT	VFAINT	Number of optional ACIS chips dropped	0	0
Observation mode	POINTING	POINTING	On-chip summing requested	N	N
[deg] Pointing RA	8.845503	8.865167715554584	Subarray requested	NONE	NONE
[deg] Pointing Dec	-20.279162	-20.29935459176161	Alternating exposures requested	N	N
[deg] Pointing Roll	281.964703	282.1801779407684	[s] Primary exposure time	0.000000	3.1
[mm] SIM focus pos	-0.782348	-0.7809083437167272			
[mm] SIM defocus	0	0.001439871863259334			
[mm] SIM translation stage pos	-227.742463	-227.7391370694001			
[mm] SIM translation stage offset	-5.85	-5.853315933529558			
[s] Observation start time (MET)	159589643.184000	159588560.1435			
Observation start date	2003-01-22T02:26:19	2003-01-22T02:09:20			
[s] Observation end time (MET)	159611143.184000	159611819.95697			
Observation end date	2003-01-22T08:24:39	2003-01-22T08:36:59			
Read mode	TIMED	TIMED			

2.3 Aspect



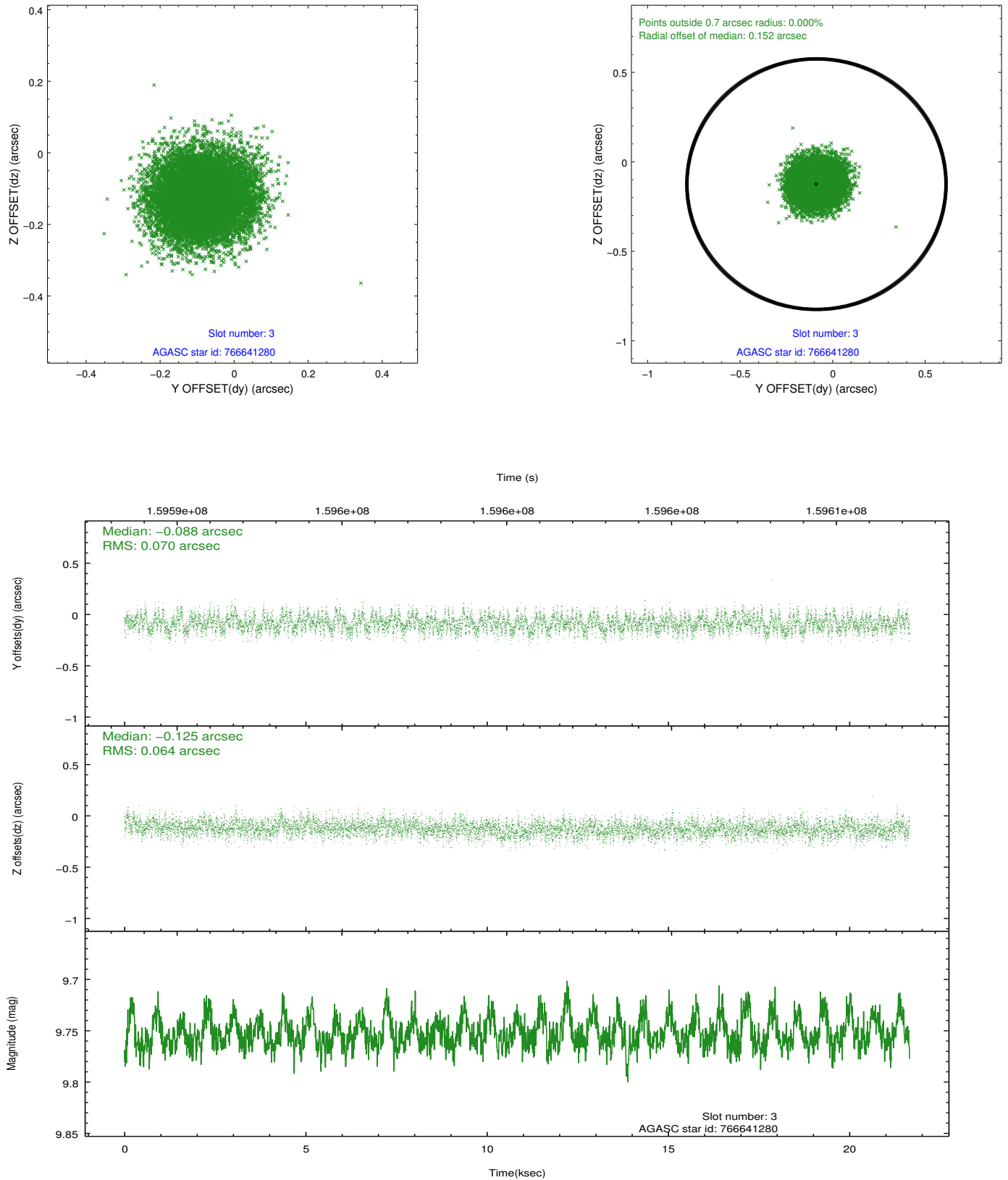


Slot Statistics

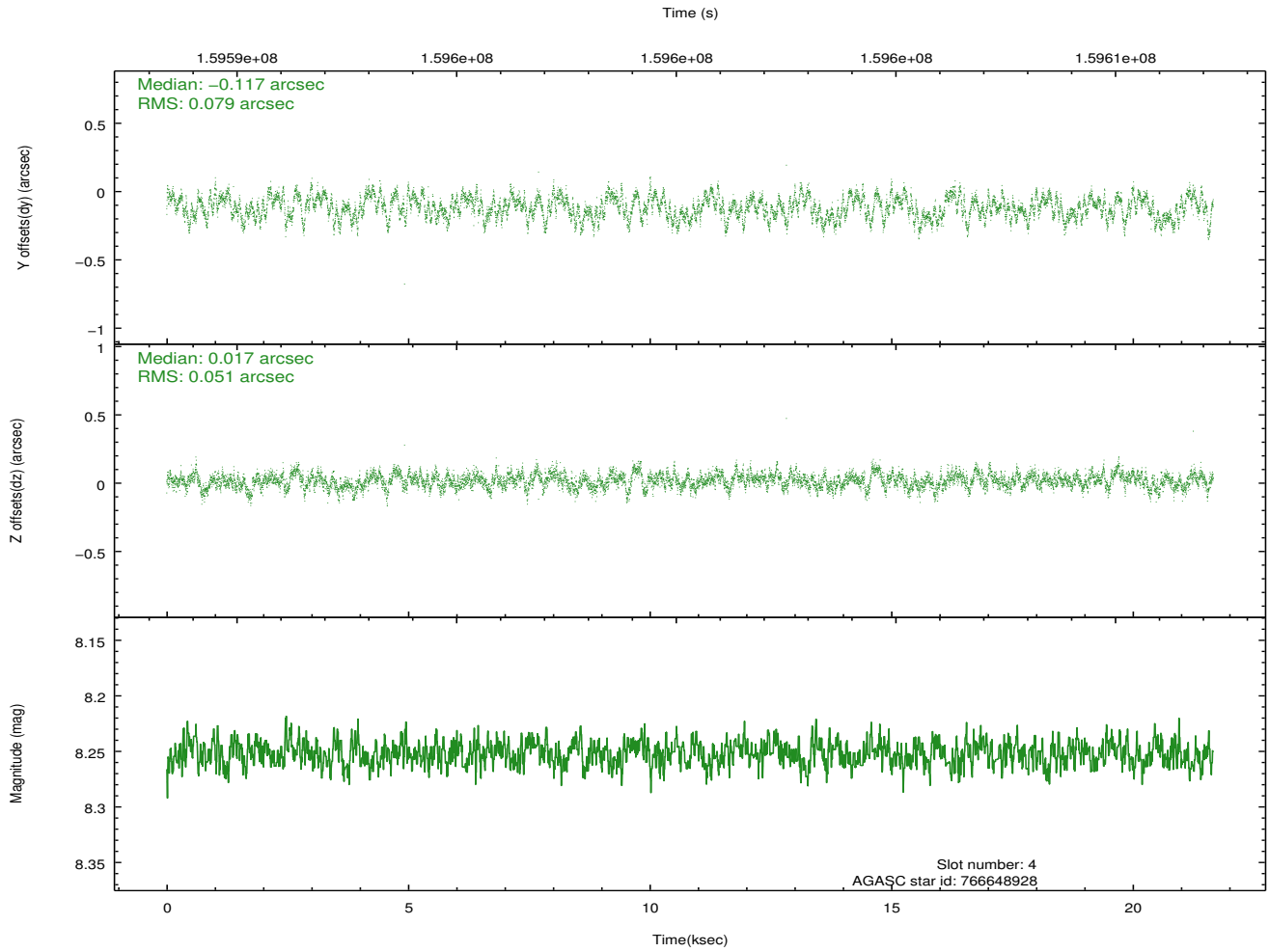
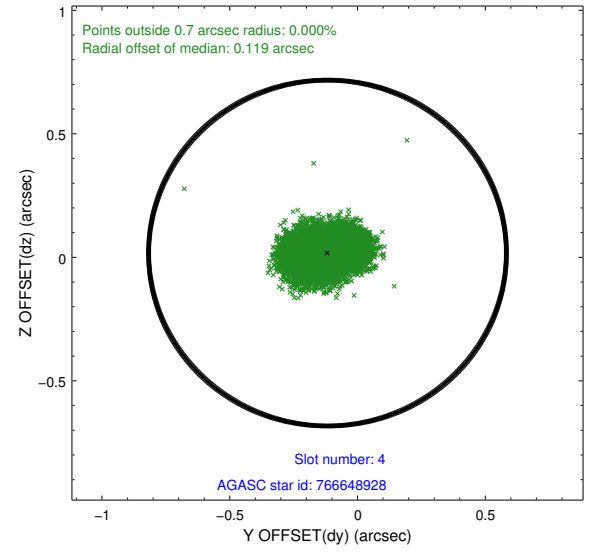
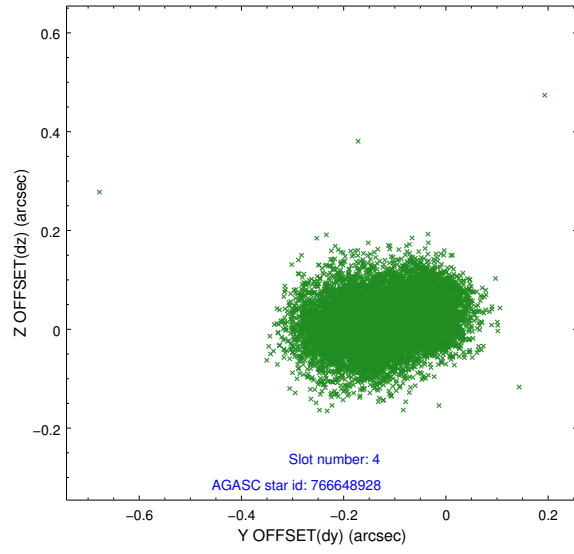
slot	status	id	mag	n_pts	med_dy	med_dz	dr1	dr2	ra	dec	mean_y	mean_z
0	FID	ACIS-I-1	7.24	5278	0.033	-0.004	0.018	0.027	0.000000	0.000000	937.02	-951.93
1	FID	ACIS-I-5	7.24	5278	-0.137	0.058	0.011	0.023	0.000000	0.000000	-1811.16	945.51
2	FID	ACIS-I-6	7.25	5279	0.014	0.018	0.021	0.042	0.000000	0.000000	402.38	1590.15
3	GUIDE	766641280	9.75	10554	-0.088	-0.125	0.102	0.162	8.181814	-19.808236	-2120.32	-1848.44
4	GUIDE	766648928	8.25	10557	-0.117	0.017	0.102	0.159	9.345627	-19.565028	-2161.33	2192.20
5	GUIDE	766654856	8.91	10552	0.155	0.093	0.087	0.135	9.569686	-20.539373	1427.77	2193.68
6	GUIDE	766658616	9.31	10553	0.036	-0.015	0.098	0.153	9.307616	-19.714562	-1661.61	1953.52
7	GUIDE	766640848	10.35	10197	0.019	0.036	0.172	0.271	9.063244	-19.667561	-2000.54	1178.77

2.4 Star Slots

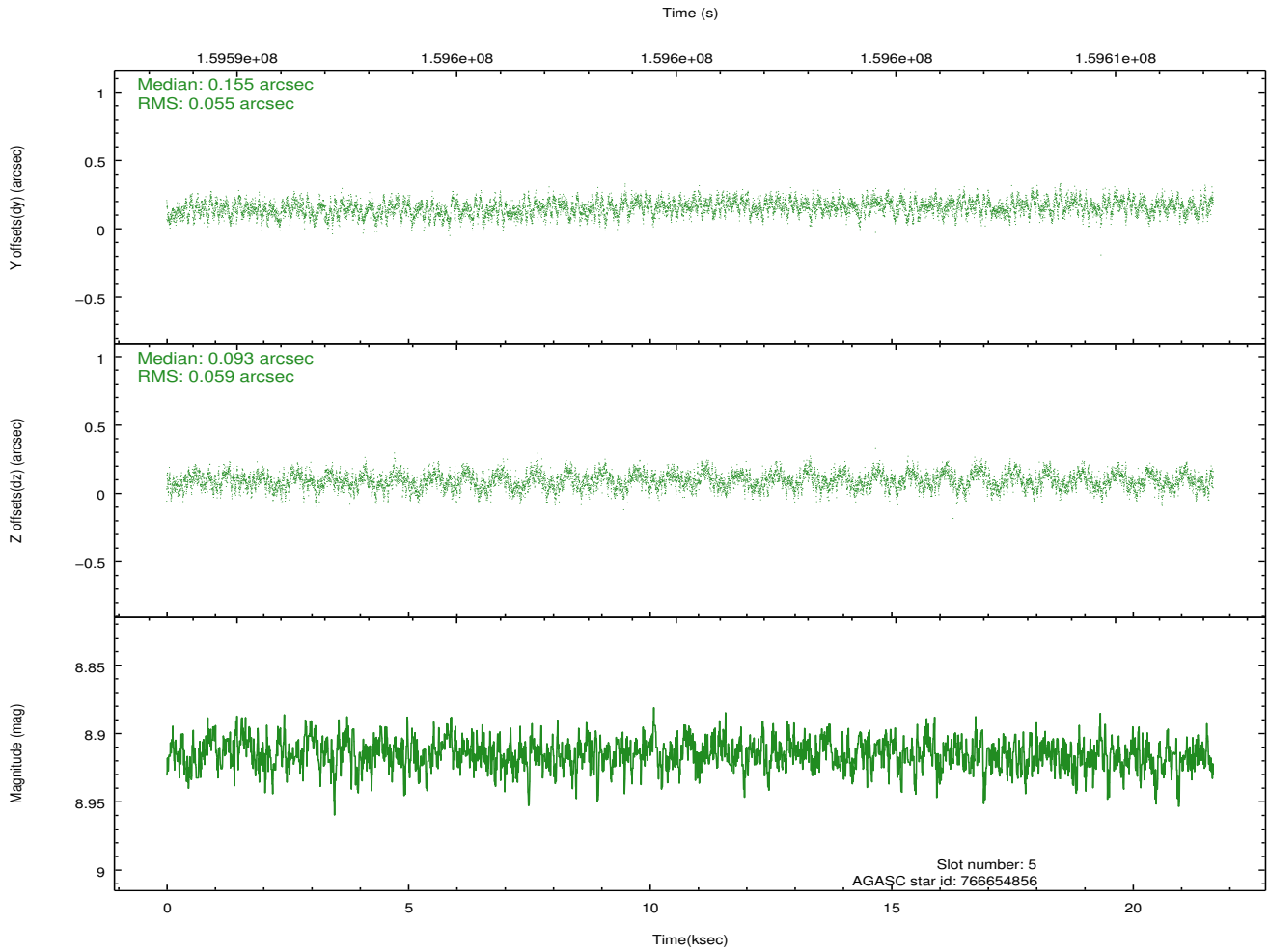
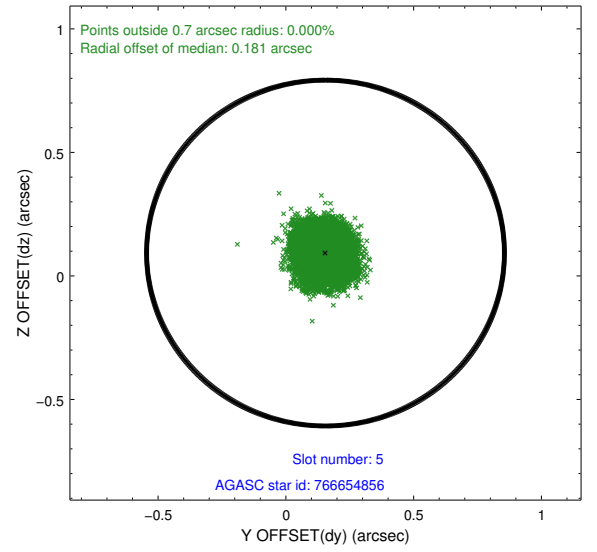
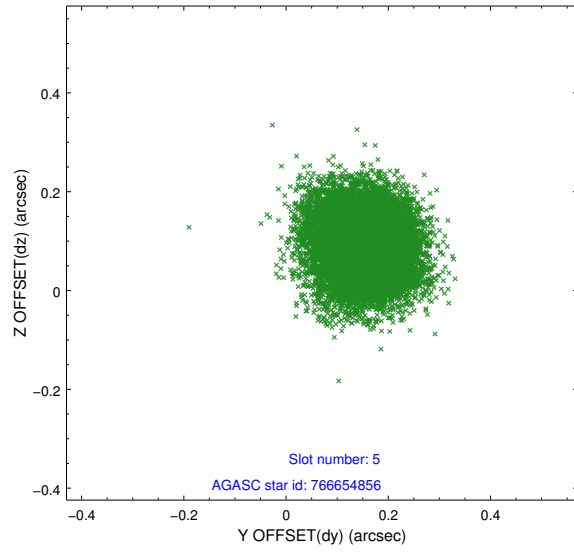
2.4.1 Slot 3



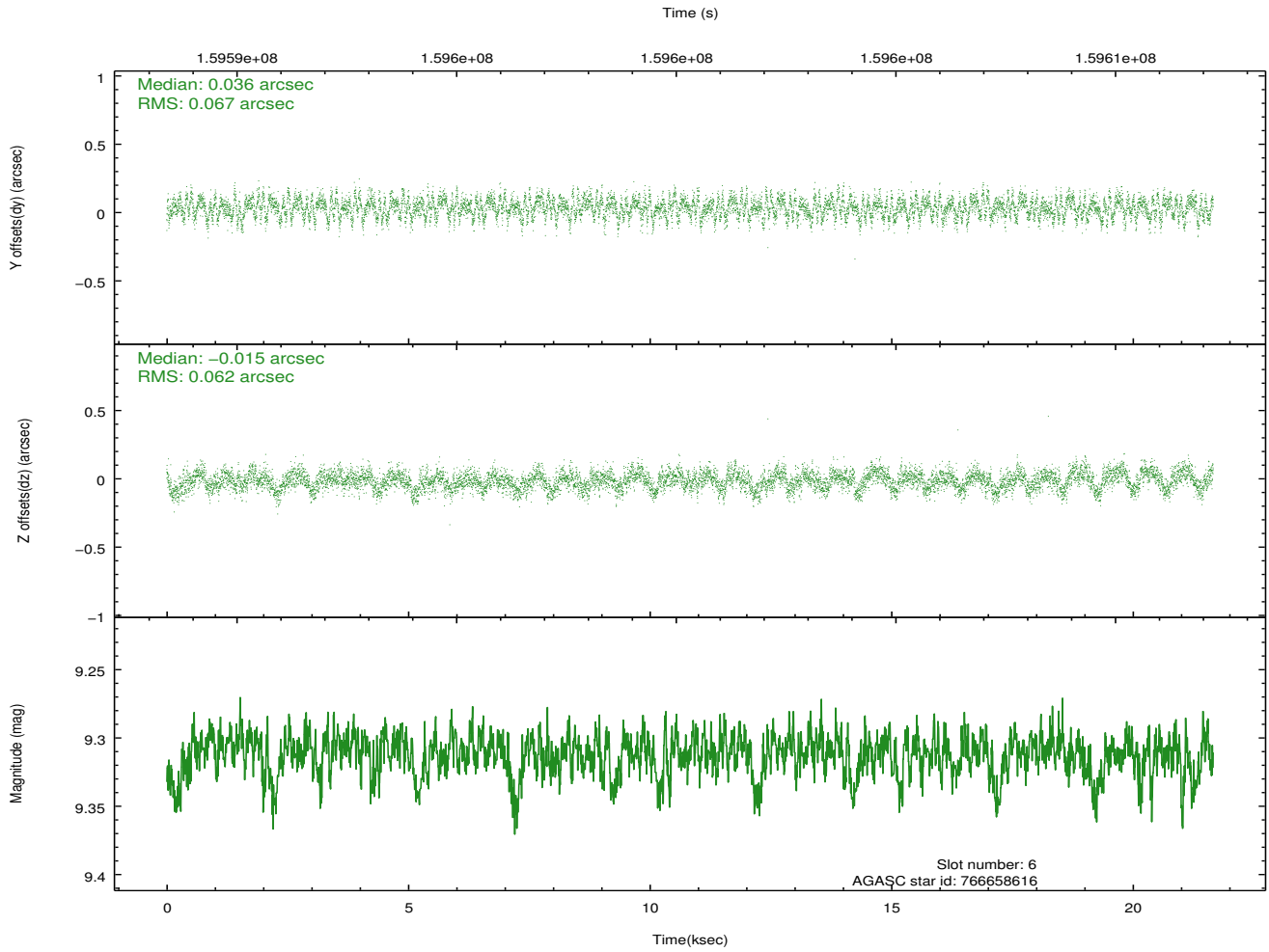
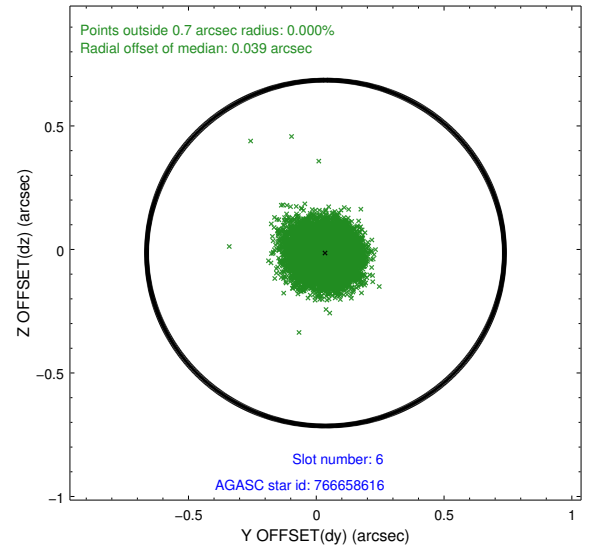
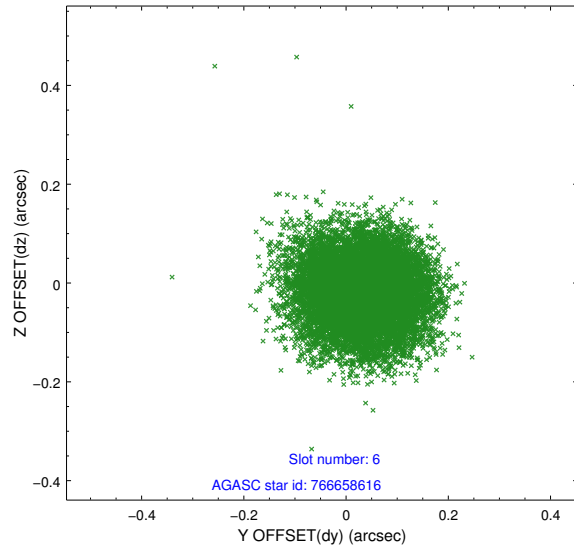
2.4.2 Slot 4



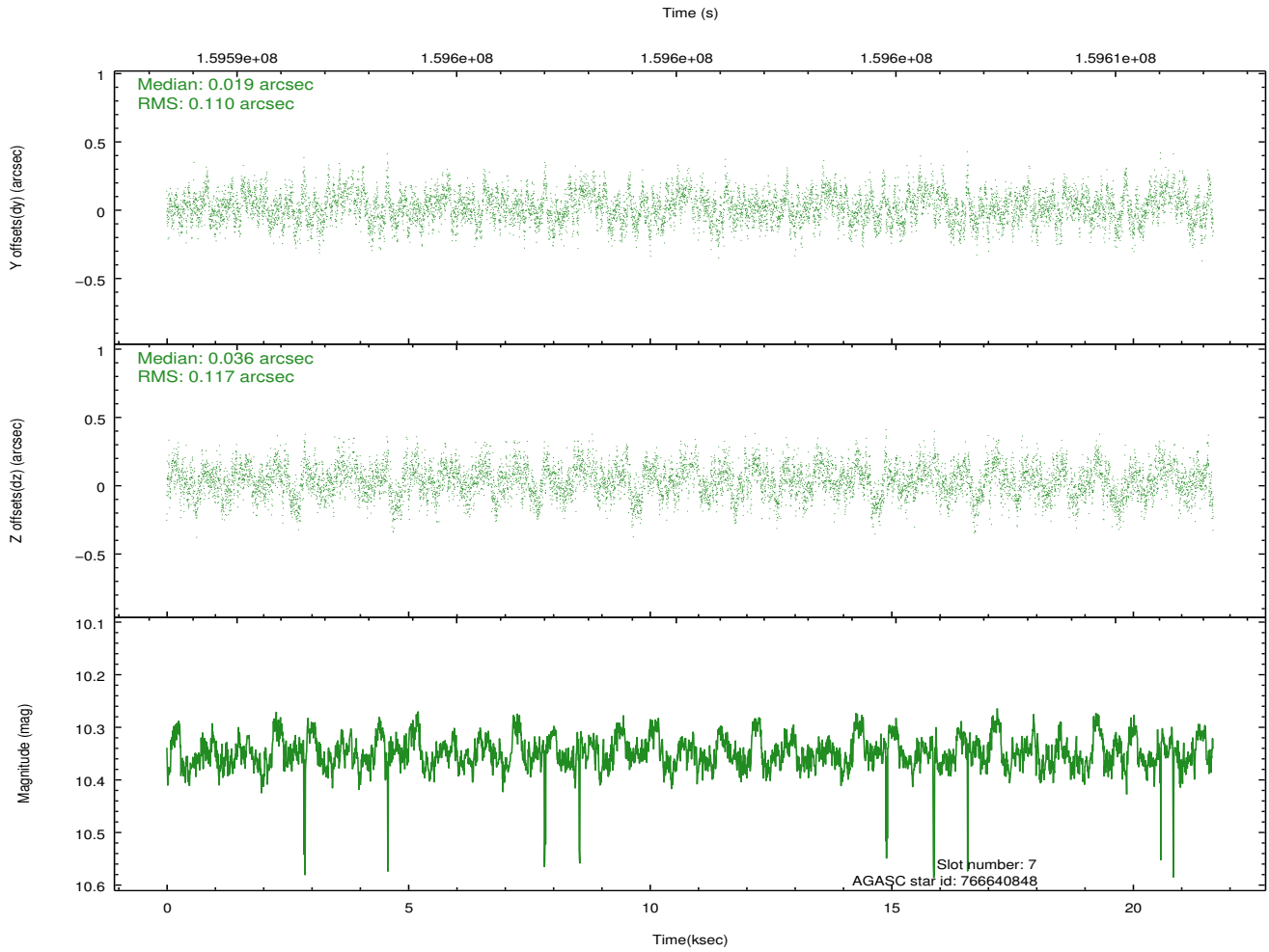
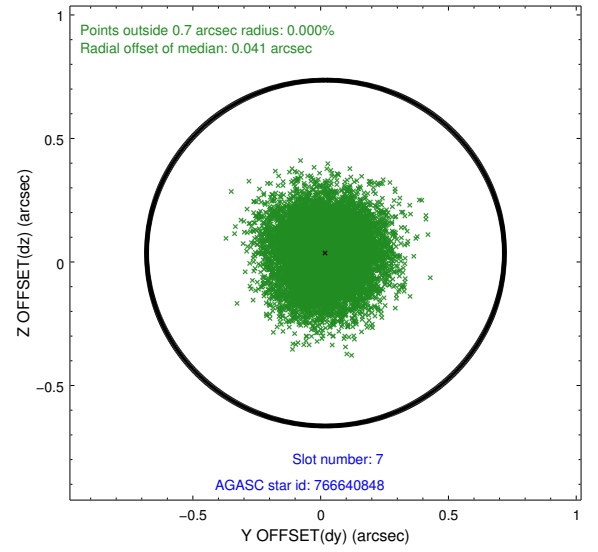
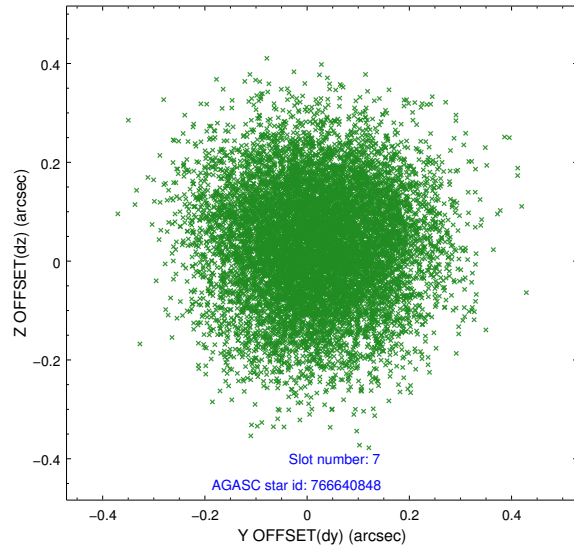
2.4.3 Slot 5



2.4.4 Slot 6

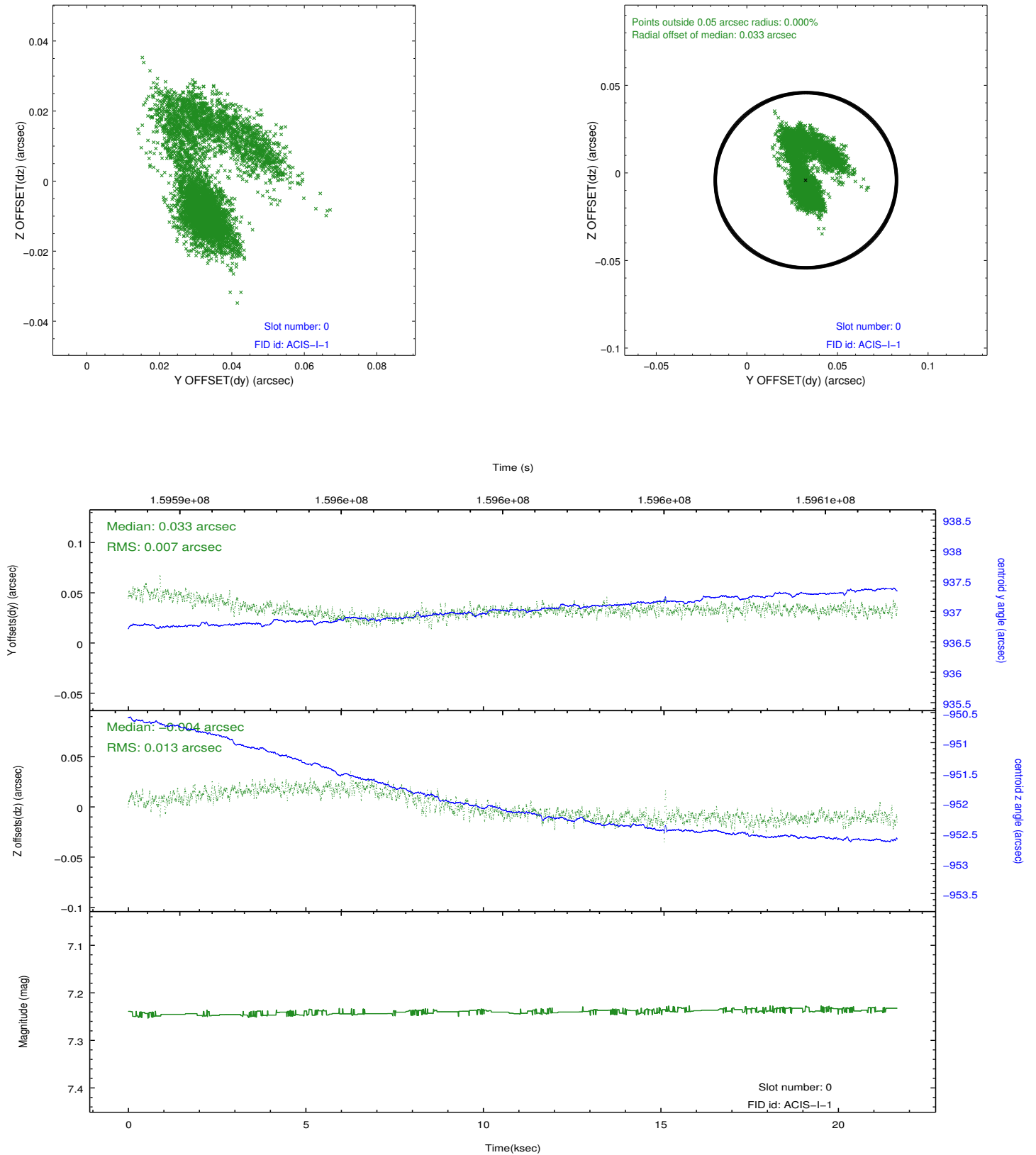


2.4.5 Slot 7

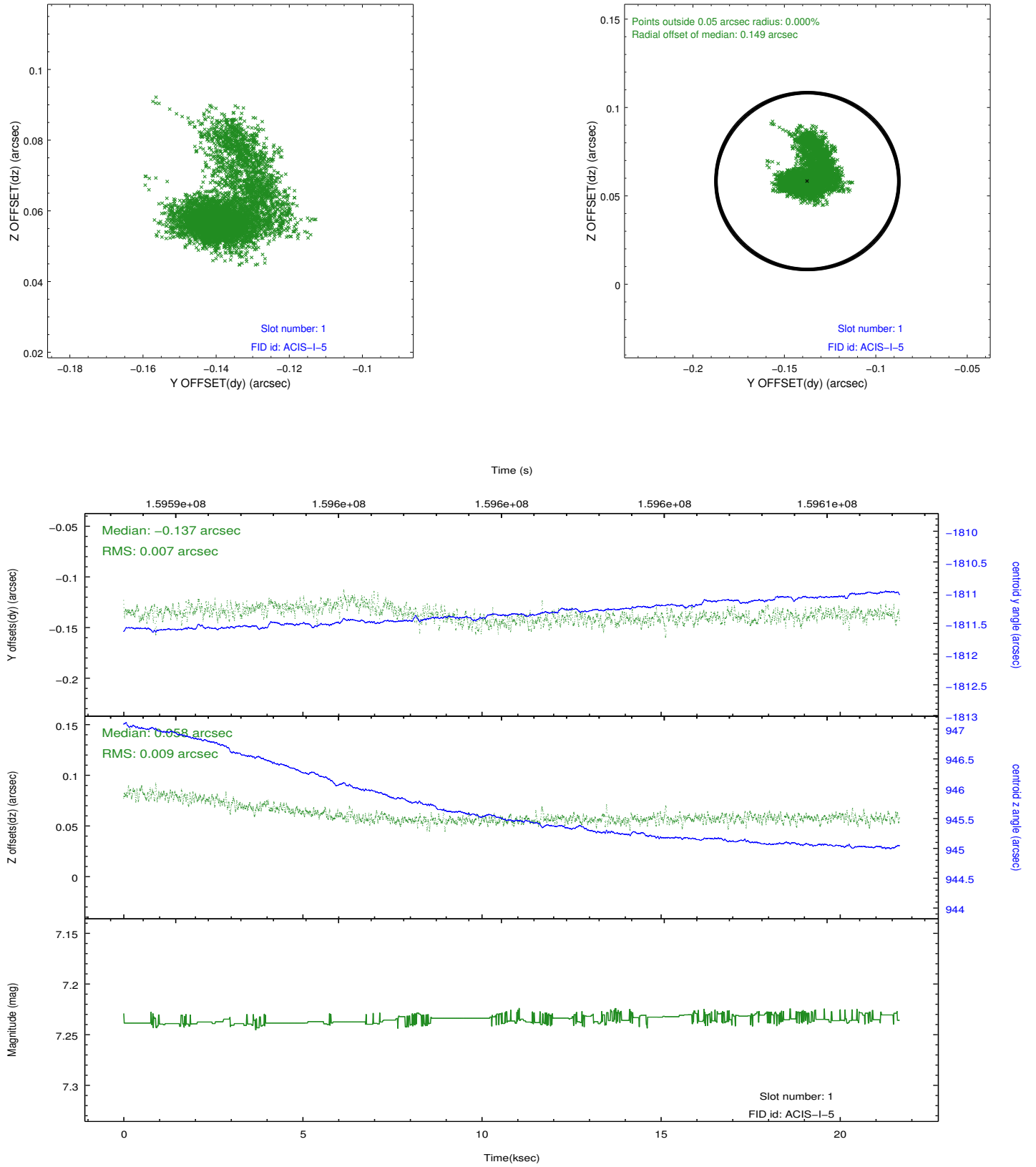


2.5 FID Slots

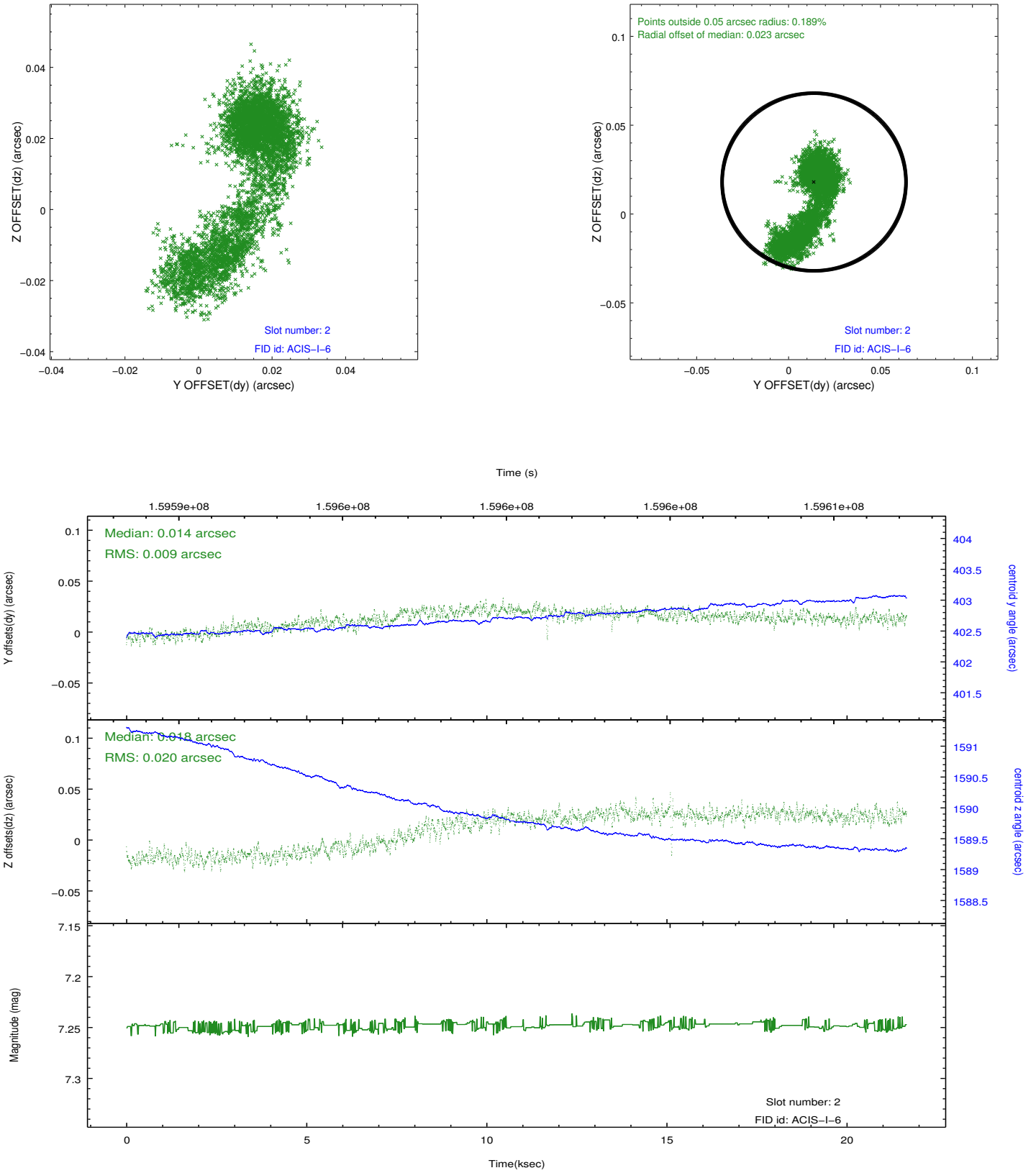
2.5.1 Slot 0



2.5.2 Slot 1



2.5.3 Slot 2



A Summary

A.1 Status

V&V Scientist	Jen Lauer
V&V Date (YYYY-MM-DD)	2012.11.01
V&V Edition	1
V&V Disposition and Status	OK
V&V Charge Time	21.64

A.2 Comments