

V&V Reference Report

L2 ASCDS Version : 8.4.5

Observation 3132 - L2 Version 3
Chandra X-Ray Center

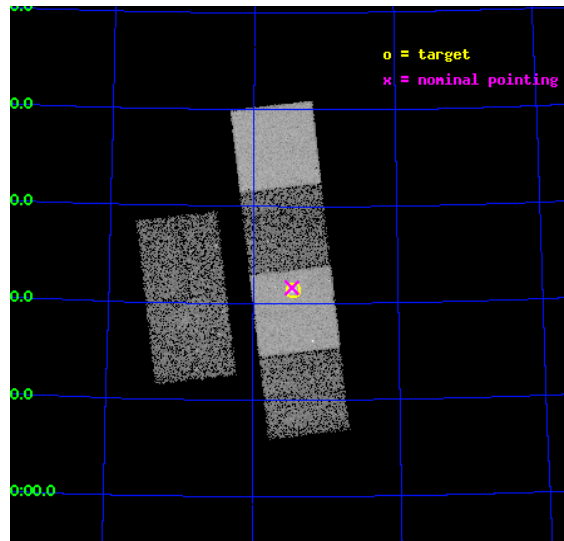
L2 Processing Date : Oct 14 2012

Contents

1	Front	2
2	OBI	3
2.1	OBI	3
2.1.1	Images	3
2.1.2	Bias	3
2.1.3	Parameters	4
2.1.4	Events	4
2.2	Compared Parameters	5
2.3	Aspect	6
2.4	Star Slots	9
2.4.1	Slot 3	9
2.4.2	Slot 4	10
2.4.3	Slot 5	11
2.4.4	Slot 6	12
2.4.5	Slot 7	13
2.5	FID Slots	14
2.5.1	Slot 0	14
2.5.2	Slot 1	15
2.5.3	Slot 2	16
A	Summary	17
A.1	Status	17
A.2	Comments	17

1 Front

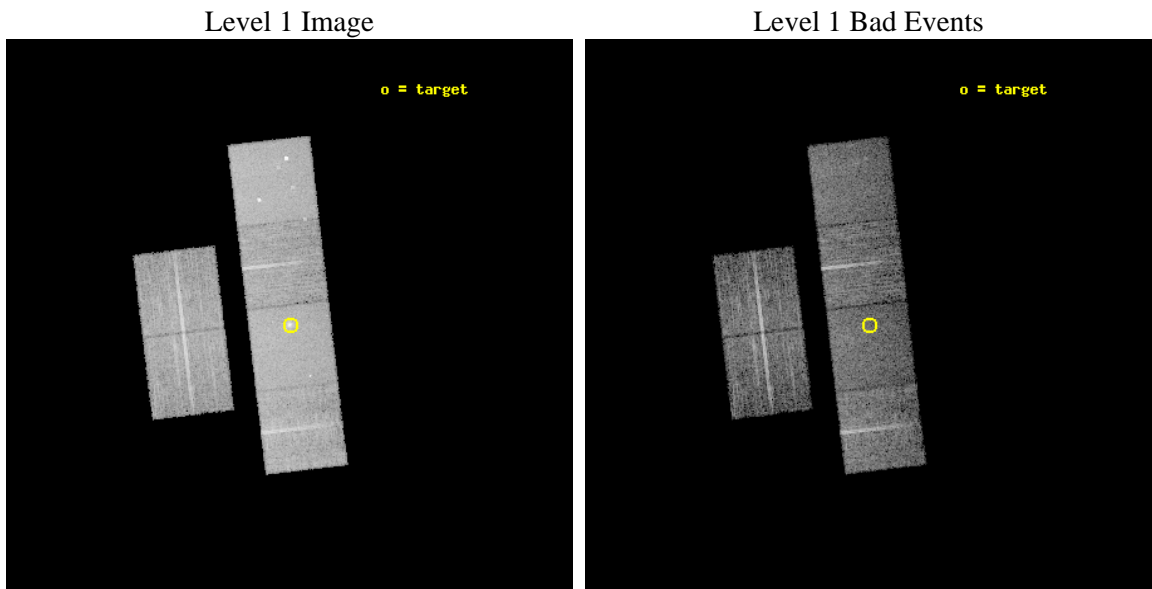
seq_num	700571	Sequence number
obs_id	3132	Observation id
title	SEARCH FOR AN INTERMEDIATE MASS BLACK HOLE IN THE STARBURST GALAXY NGC2146	Proposal title
observer	Dr Hironori Matsumoto	Principal investigator
object	NGC2146	Source name
dtcycle	0	
cycle	P	events from which exps? Prim/Second/Both
ra_targ	94.655417	Observer's specified target RA [deg]
dec_targ	78.356556	Observer's specified target Dec [deg]
ra_nom	94.666236805236	Nominal RA [deg]
dec_nom	78.360324998151	Nominal Dec [deg]
roll_nom	83.312856160126	Nominal Roll [deg]
revision	3	Processing version of data
ontime	9644.7999640703	Sum of GTIs [s]
livetime	9522.6716995239	Livetime [s]
ontime2	9641.5589738786	Sum of GTIs [s]
ontime3	9644.7999640703	Sum of GTIs [s]
ontime5	9644.7999640703	Sum of GTIs [s]
ontime6	9644.7999640703	Sum of GTIs [s]
ontime7	9644.7999640703	Sum of GTIs [s]
ontime8	9644.7999640703	Sum of GTIs [s]
l2events	99025	Number of level 2 events



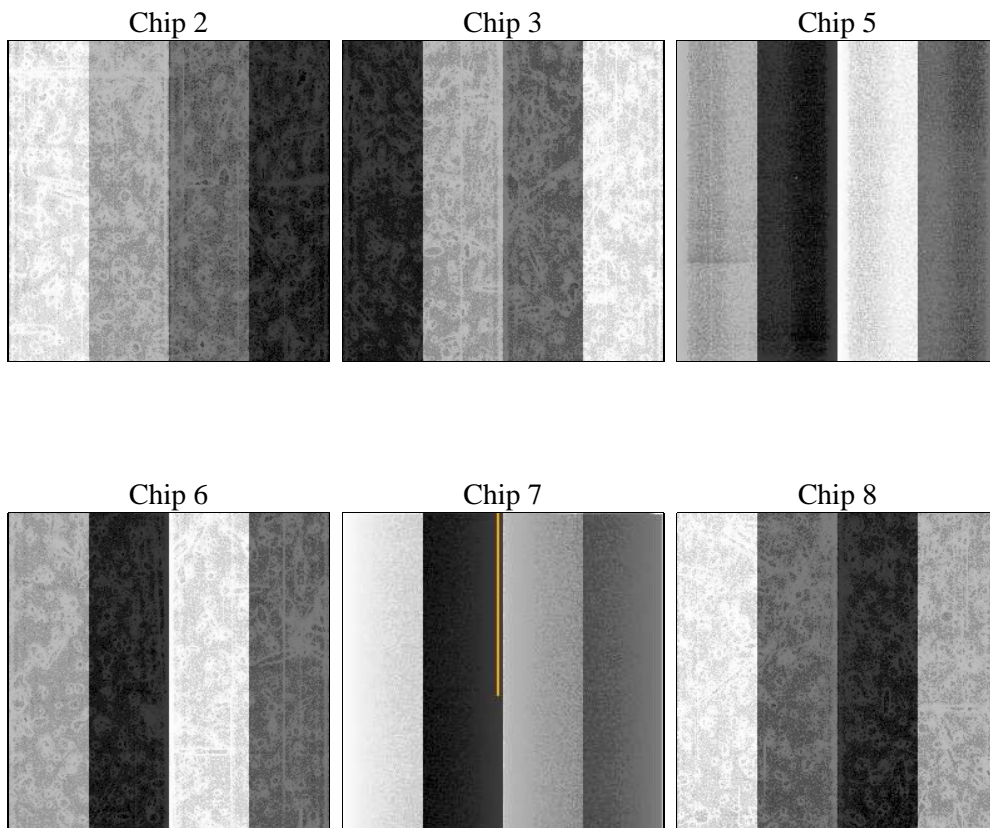
2 OBI

2.1 OBI

2.1.1 Images



2.1.2 Bias



2.1.3 Parameters

obi_num	0	Obi number	sched_exp_time	9500.000000	[s] Scheduled observation exposure time
ascdsver	8.4.5	Processing system revision	ontime	9644.7999640703	Sum of GTIs [s]
caldsver	4.5.2	 	ontime2	9641.5589738786	Sum of GTIs [s]
date	2012-10-14T18:42:54	Date and time of file creation	ontime3	9644.7999640703	Sum of GTIs [s]
revision	3	Processing version of data	ontime5	9644.7999640703	Sum of GTIs [s]
			ontime6	9644.7999640703	Sum of GTIs [s]
			ontime7	9644.7999640703	Sum of GTIs [s]
			ontime8	9644.7999640703	Sum of GTIs [s]
			l1events	437677	Number of level 1 events

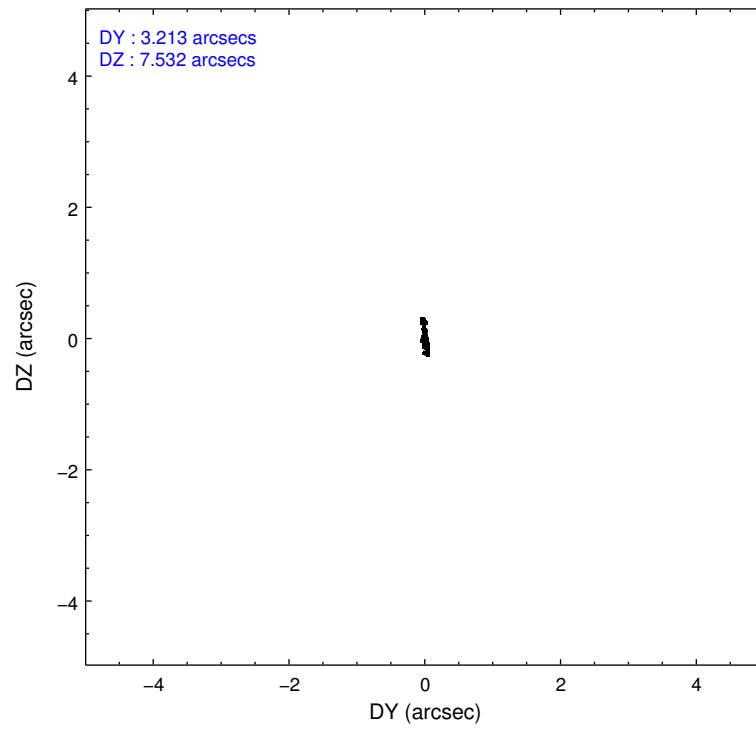
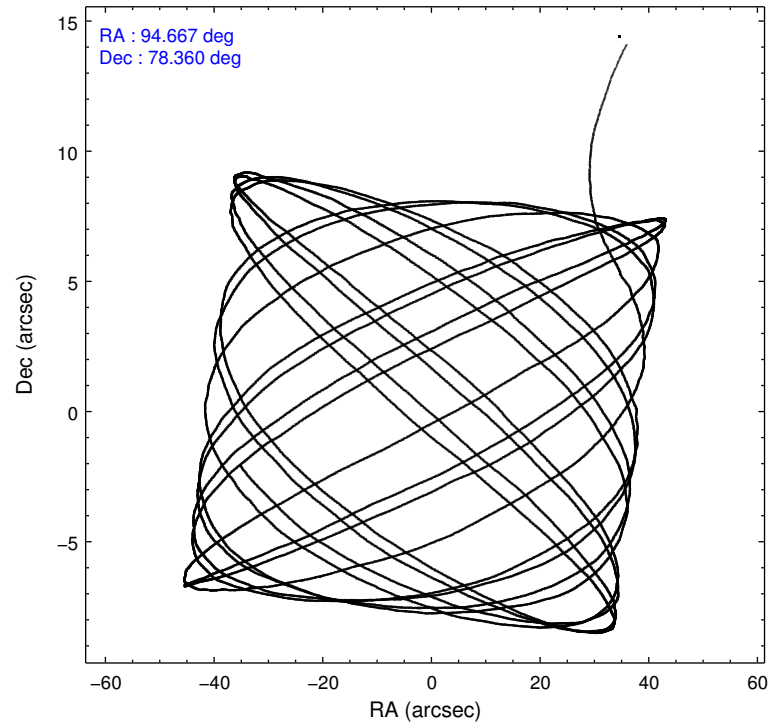
2.1.4 Events

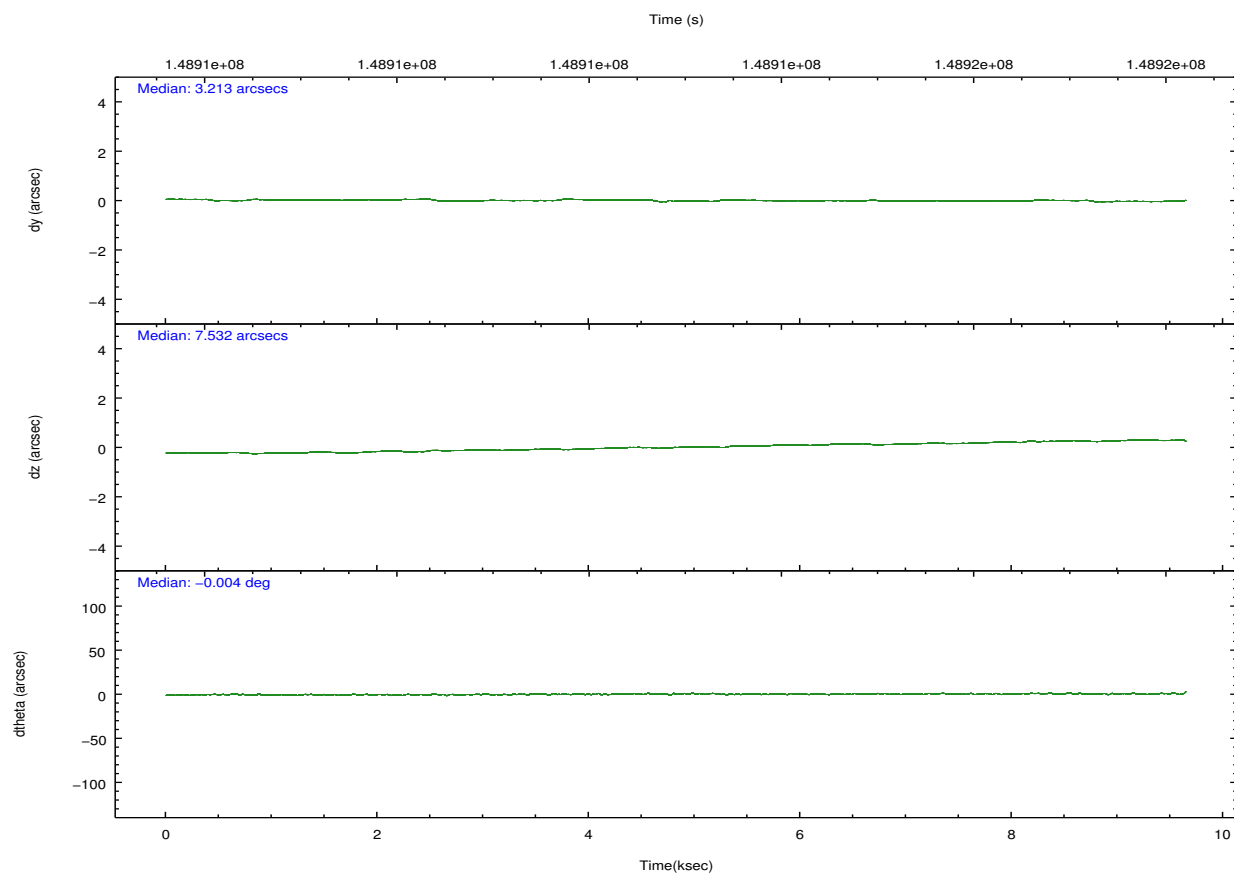
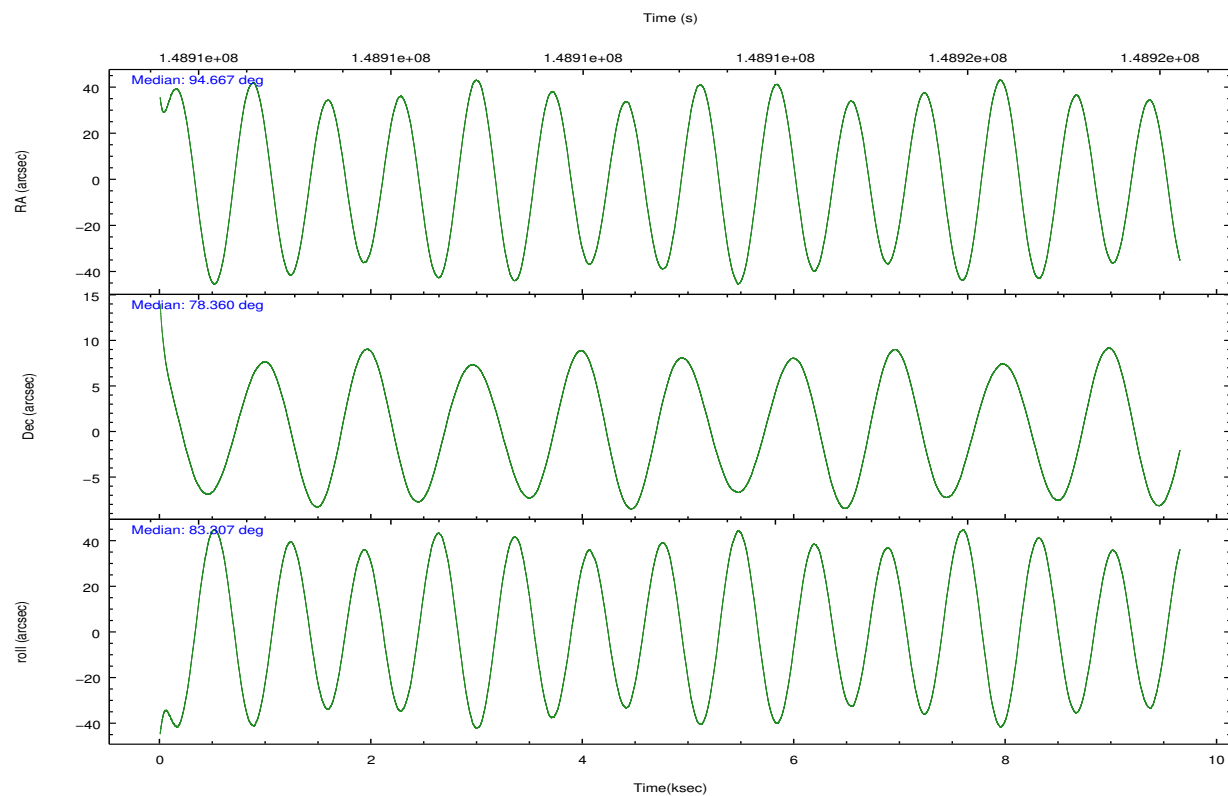
	ccd 2	ccd 3	ccd 5	ccd 6	ccd 7	ccd 8		ccd 2	ccd 3	ccd 5	ccd 6	ccd 7	ccd 8
level 1 events	61737	60327	91780	62542	84017	77274	grade 0 events	3209	3548	5730	2894	3935	5108
rejected events	54670	53044	49716	55481	47816	61365		5%	5%	6%	4%	4%	6%
rejected %	88%	87%	54%	88%	56%	79%	grade 1 events	37	36	194	23	74	45
								0%	0%	0%	0%	0%	0%
							grade 2 events	1413	1386	12132	1495	7547	3450
								2%	2%	13%	2%	8%	4%
							grade 3 events	685	647	1760	721	3417	1671
								1%	1%	1%	1%	4%	2%
							grade 4 events	692	668	1792	683	3333	1649
								1%	1%	1%	1%	3%	2%
							grade 5 events	2362	2550	6616	2773	7594	3478
								3%	4%	7%	4%	9%	4%
							grade 6 events	1219	1178	21597	1450	18724	4277
								1%	1%	23%	2%	22%	5%
							grade 7 events	52120	50314	41959	52503	39393	57596
								84%	83%	45%	83%	46%	74%

2.2 Compared Parameters

Parameter	Planned	Actual	Parameter	Planned	Actual
Instrument	ACIS	ACIS	Obspar format version number	7	7
Detector	ACIS-235678	ACIS-235678	Obspar file type	PREDICTED	ACTUAL
Grating	NONE	NONE	Obspar update status	NONE	UPDATED
Data mode	FAINT	FAINT	Number of optional ACIS chips dropped	0	0
Observation mode	POINTING	POINTING	On-chip summing requested	N	N
[deg] Pointing RA	94.720972	94.66623680523557	Subarray requested	NONE	NONE
[deg] Pointing Dec	78.335501	78.36032499815063	Alternating exposures requested	N	N
[deg] Pointing Roll	83.102632	83.31285616012597	[s] Primary exposure time	0.000000	3.2
[mm] SIM focus pos	-0.684267	-0.6828225247311905			
[mm] SIM defocus	0	0.001444936568705701			
[mm] SIM translation stage pos	-190.132523	-190.1400660498719			
[mm] SIM translation stage offset	0	0.00754346686406393			
[s] Observation start time (MET)	148908233.184000	148907076.21131			
Observation start date	2002-09-20T11:22:49	2002-09-20T11:04:36			
[s] Observation end time (MET)	148917733.184000	148918348.13678			
Observation end date	2002-09-20T14:01:09	2002-09-20T14:12:28			
Read mode	TIMED	TIMED			

2.3 Aspect



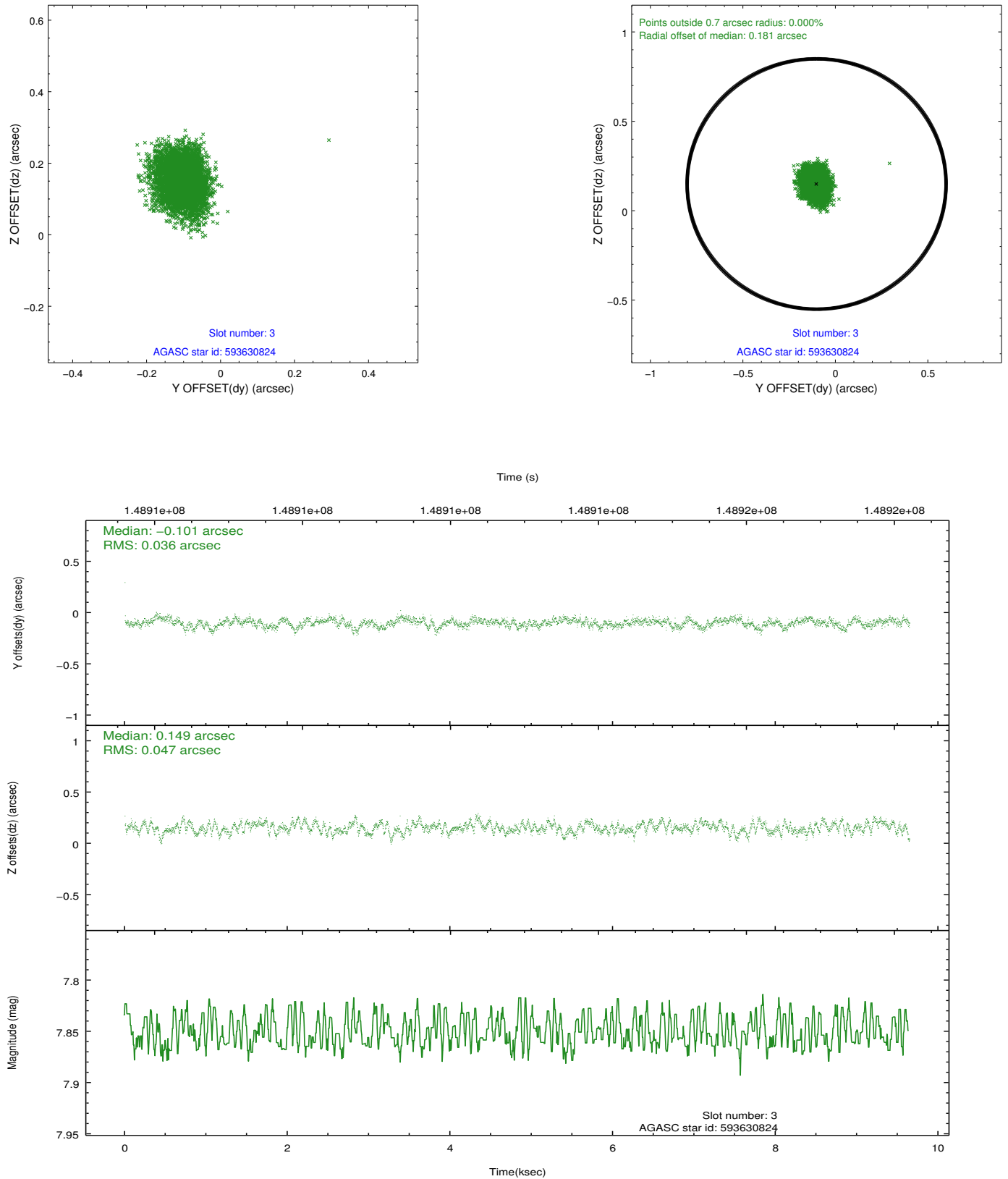


Slot Statistics

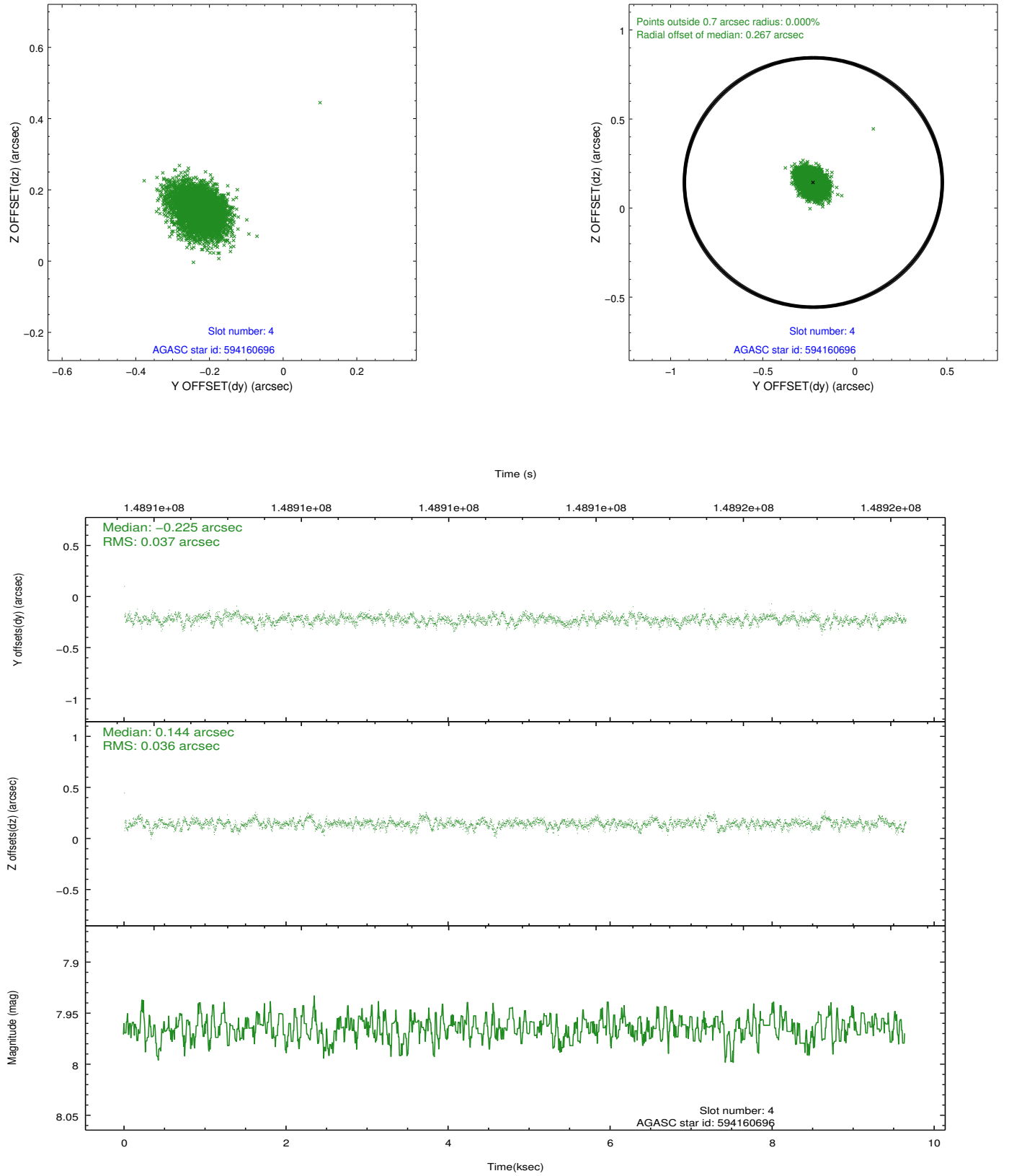
slot	status	id	mag	n_pts	med_dy	med_dz	dr1	dr2	ra	dec	mean_y	mean_z
0	FID	ACIS-S-2	7.11	2353	-0.013	-0.004	0.007	0.012	0.000000	0.000000	-755.89	-1728.72
1	FID	ACIS-S-4	7.20	2353	0.005	0.007	0.006	0.011	0.000000	0.000000	2157.17	179.18
2	FID	ACIS-S-5	7.24	2353	-0.023	0.005	0.007	0.012	0.000000	0.000000	-1808.01	173.51
3	GUIDE	593630824	7.85	4706	-0.101	0.149	0.063	0.102	97.139560	77.959365	-1089.16	-1960.20
4	GUIDE	594160696	7.96	4707	-0.225	0.144	0.054	0.091	96.554720	78.795378	1816.94	-1071.59
5	GUIDE	593628560	8.25	4705	0.066	-0.126	0.075	0.126	92.260818	78.027017	-1284.70	1694.84
6	GUIDE	593631272	8.36	4707	0.302	0.024	0.073	0.118	97.229274	77.907214	-1263.52	-2057.07
7	GUIDE	594155200	9.11	4705	-0.045	-0.190	0.069	0.110	91.887725	78.921956	1907.15	2204.31

2.4 Star Slots

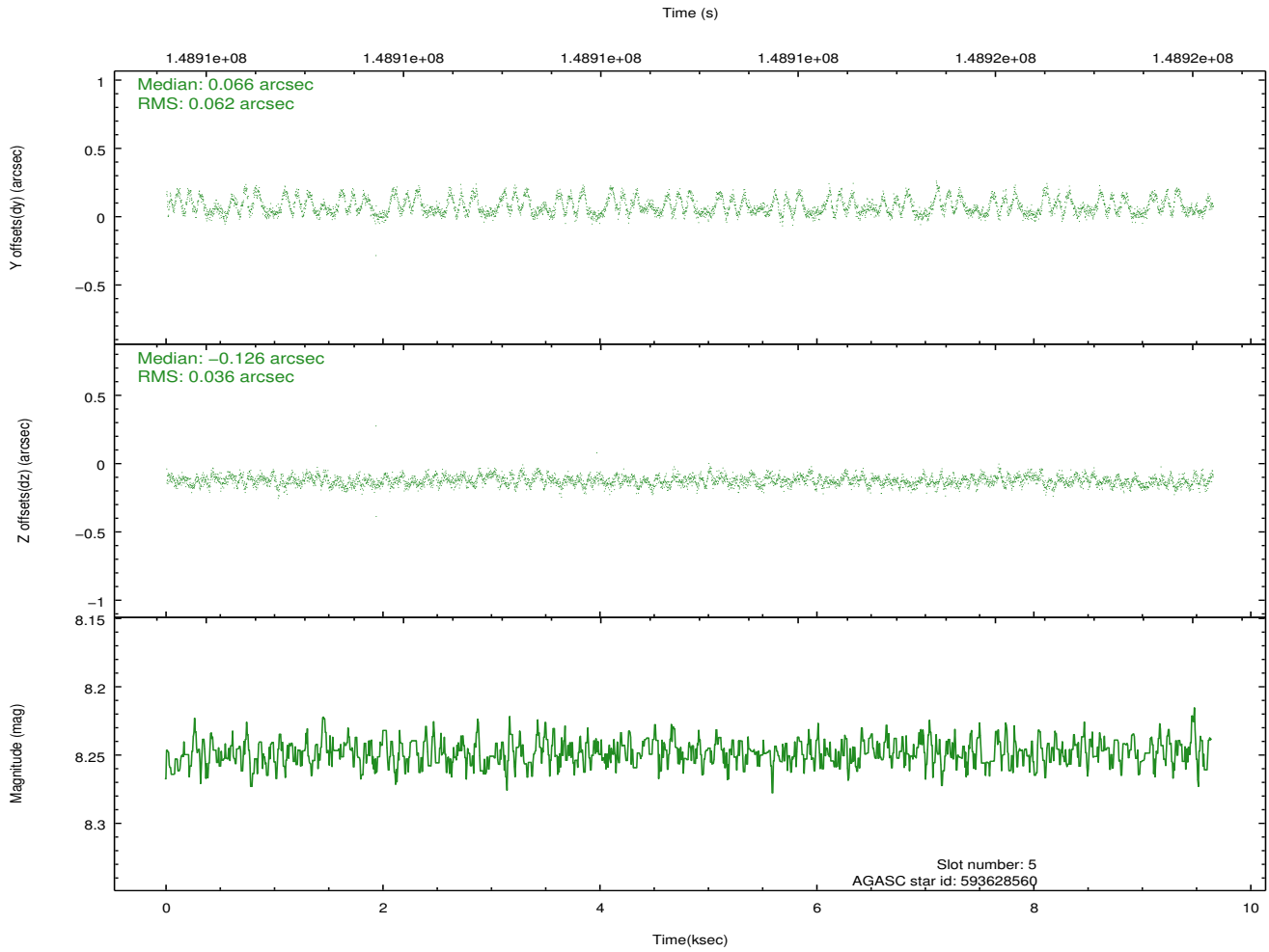
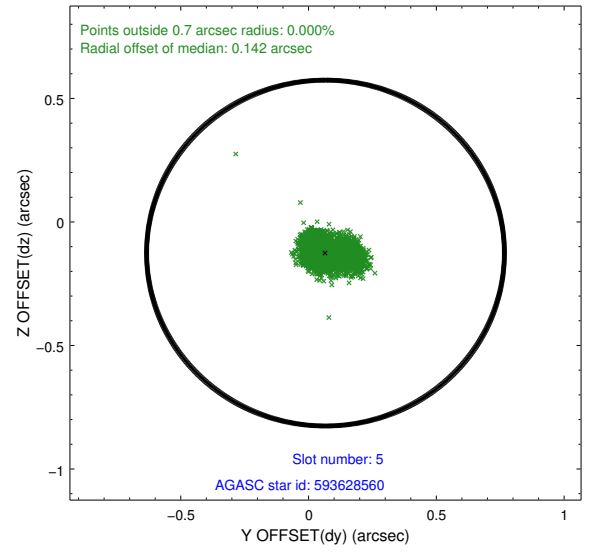
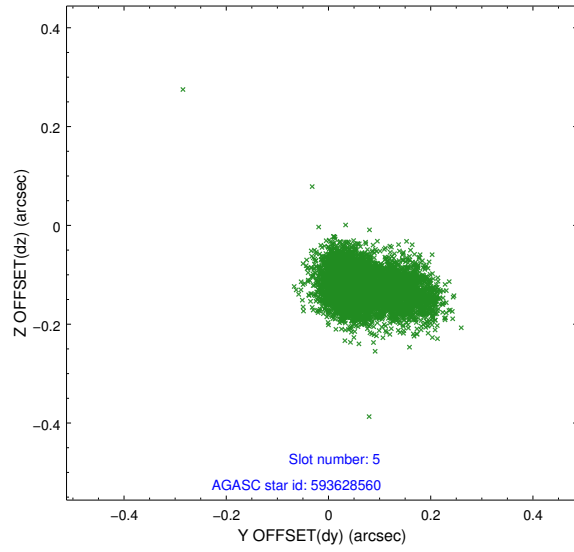
2.4.1 Slot 3



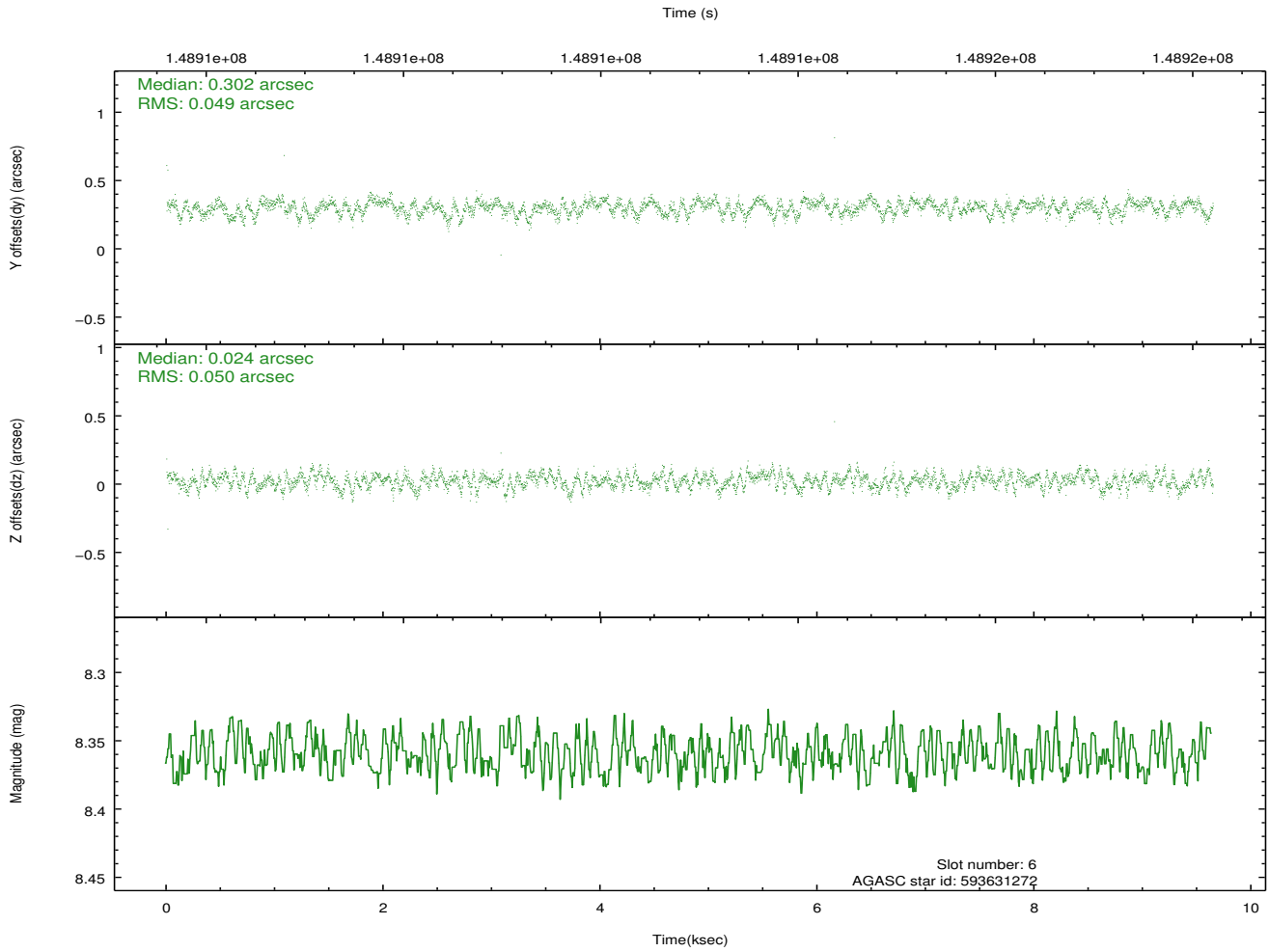
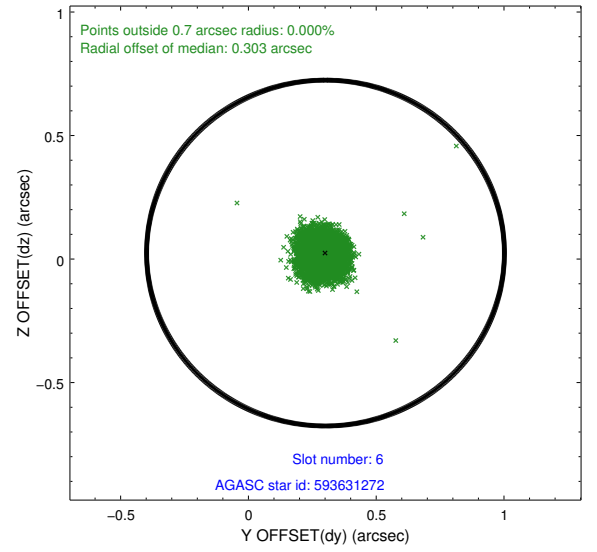
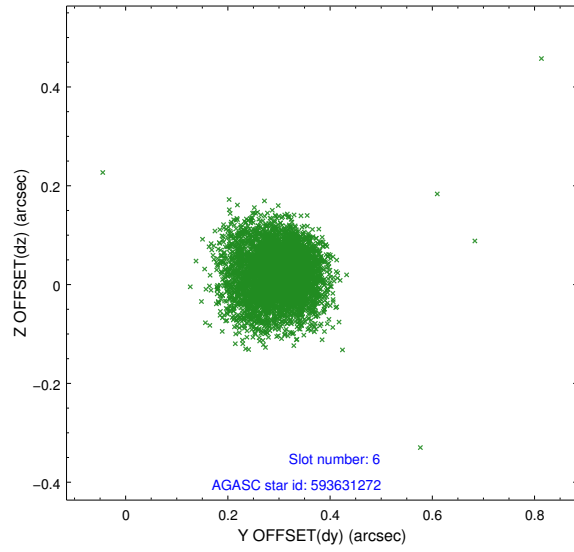
2.4.2 Slot 4



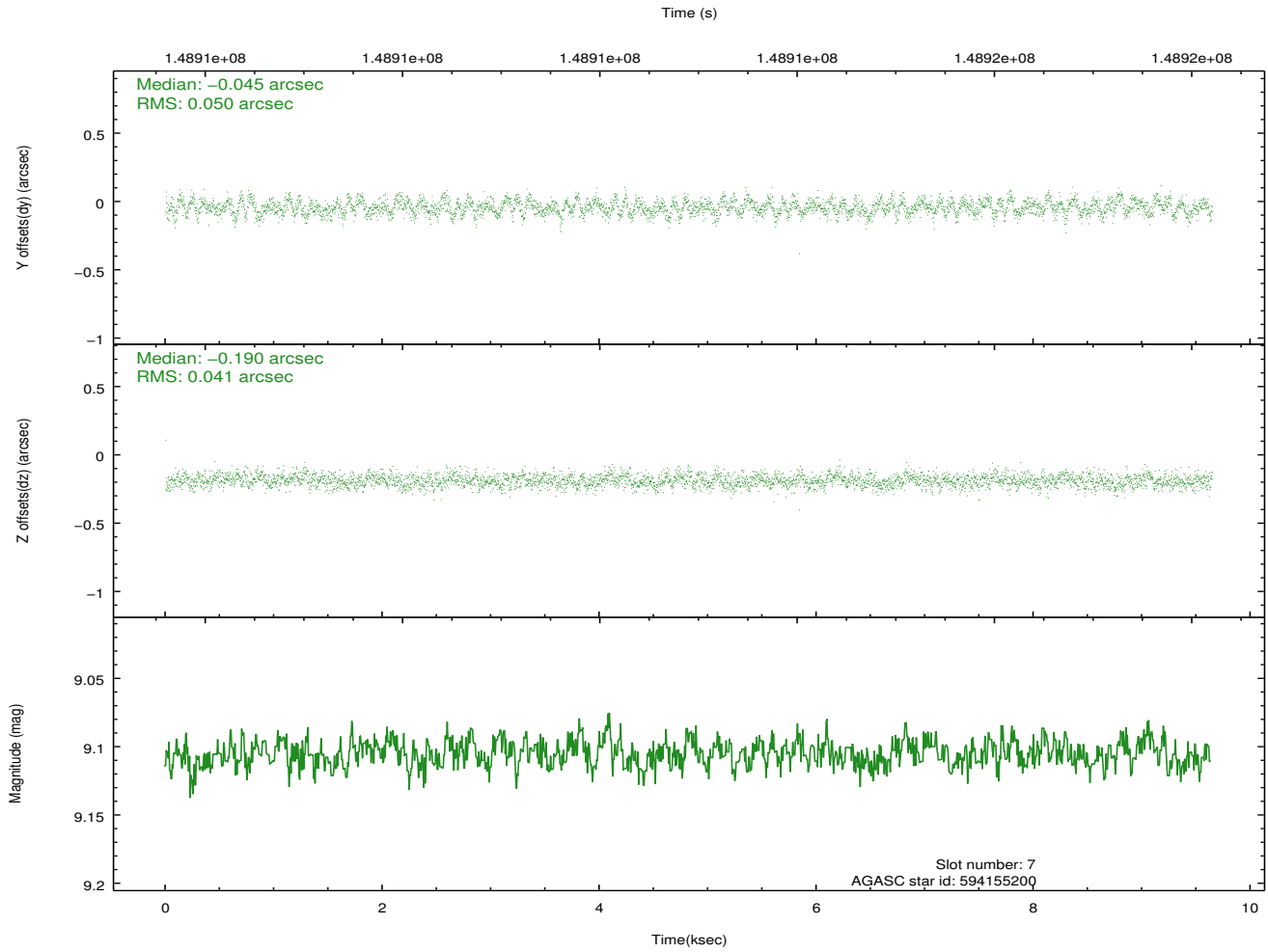
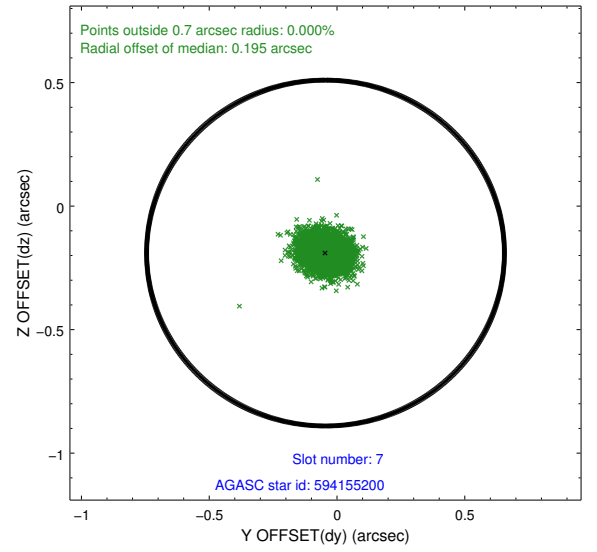
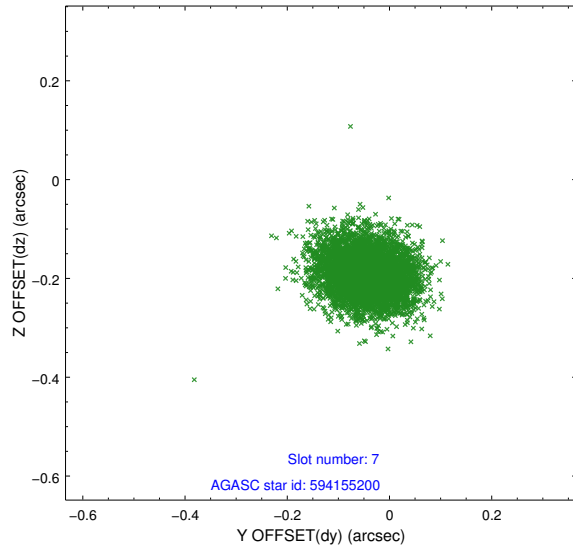
2.4.3 Slot 5



2.4.4 Slot 6

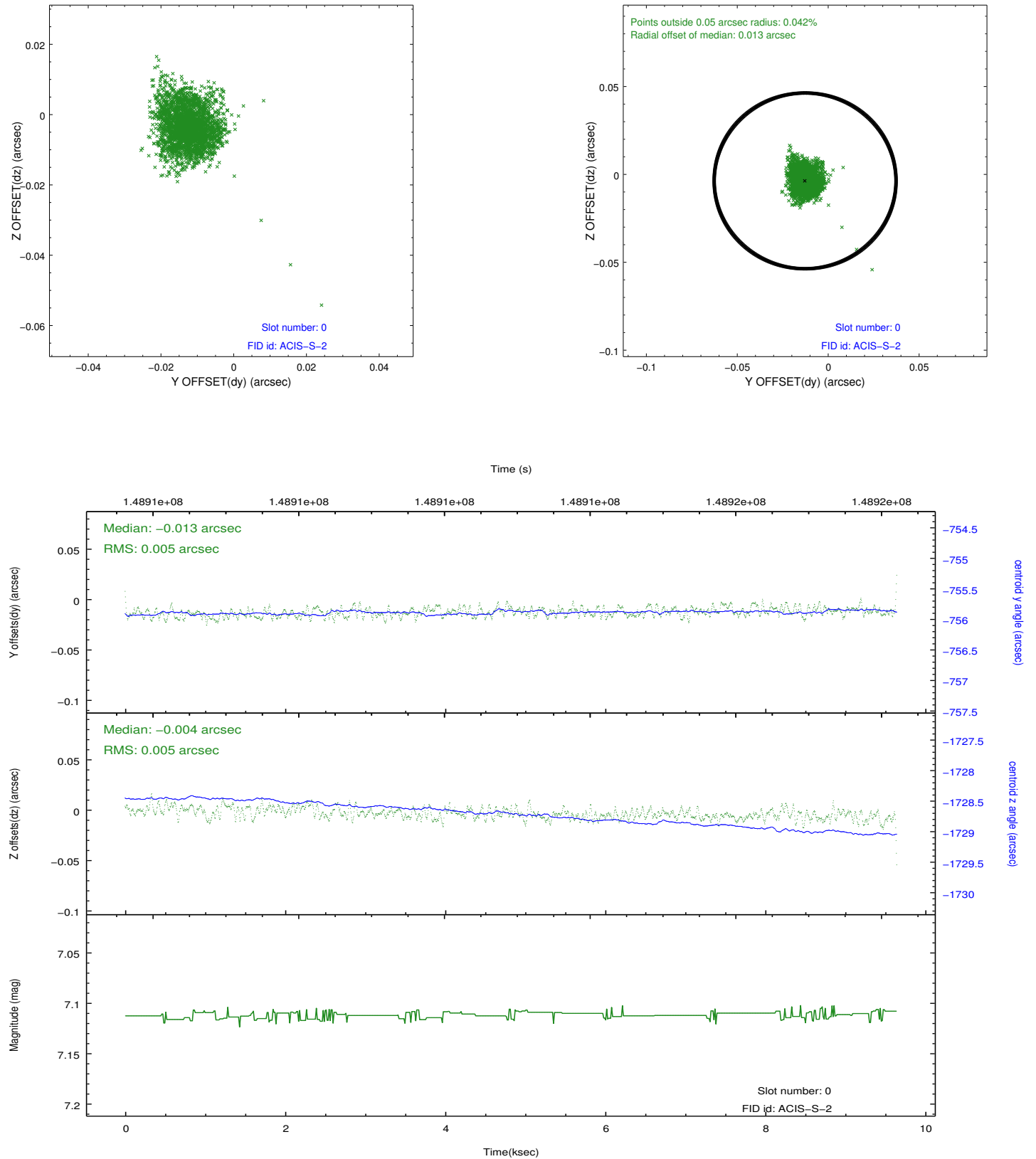


2.4.5 Slot 7

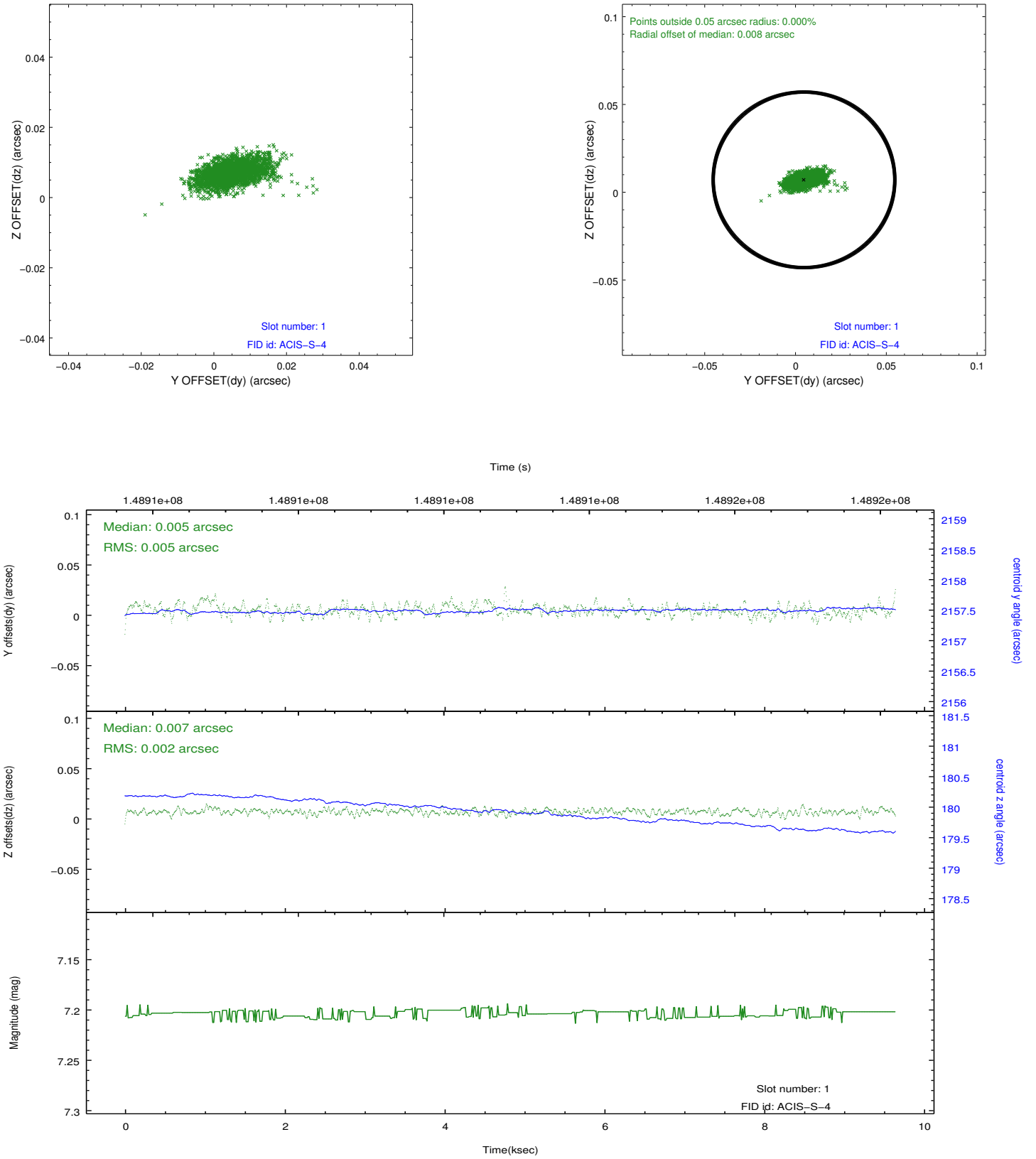


2.5 FID Slots

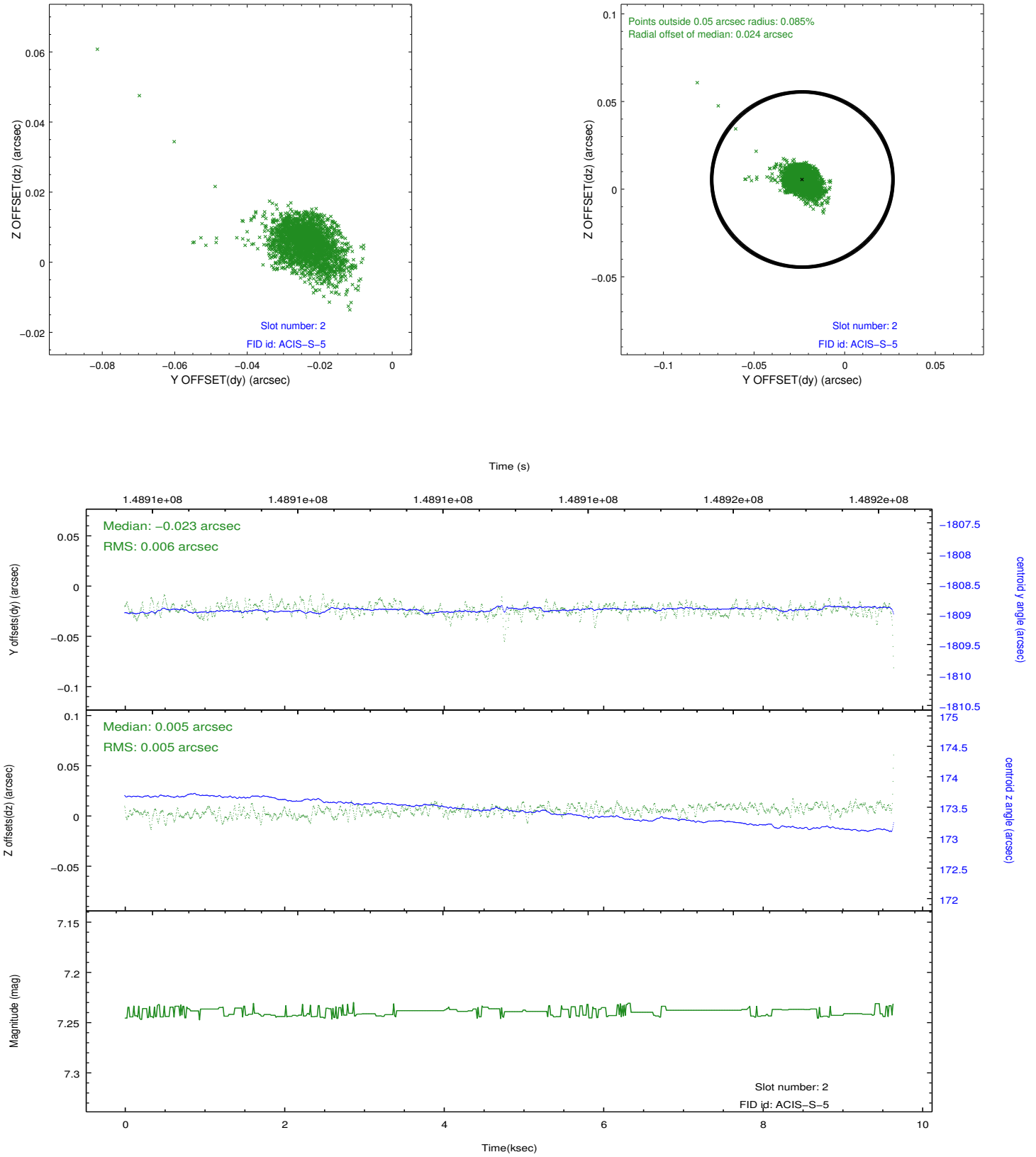
2.5.1 Slot 0



2.5.2 Slot 1



2.5.3 Slot 2



A Summary

A.1 Status

V&V Scientist	Jen Lauer
V&V Date (YYYY-MM-DD)	2012.10.24
V&V Edition	1
V&V Disposition and Status	OK
V&V Charge Time	9.644

A.2 Comments

Monitor constraint met.