

V&V Reference Report

L2 ASCDS Version : 7.6.9

Observation 3132 - L2 Version 001
Chandra X-Ray Center

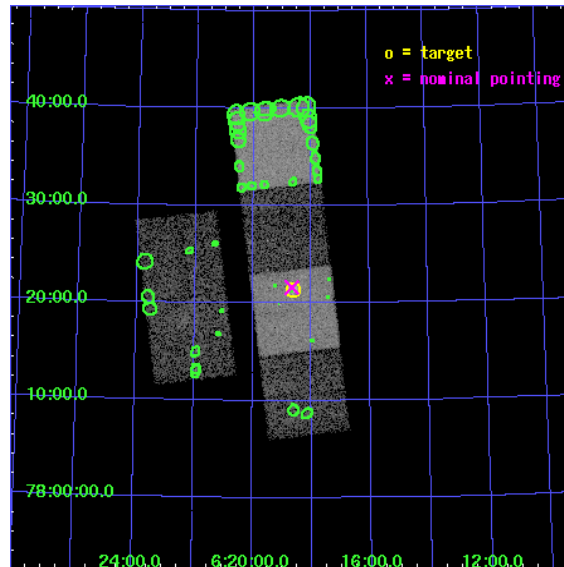
L2 Processing Date : Oct 4 2006

Contents

1	Front	2
2	OBI	3
2.1	OBI	3
2.1.1	Images	3
2.1.2	Bias	3
2.1.3	Parameters	4
2.1.4	Events	4
2.2	Compared Parameters	5
2.3	Aspect	6
2.4	Star Slots	9
2.4.1	Slot 3	9
2.4.2	Slot 4	10
2.4.3	Slot 5	11
2.4.4	Slot 6	12
2.4.5	Slot 7	13
2.5	FID Slots	14
2.5.1	Slot 0	14
2.5.2	Slot 1	15
2.5.3	Slot 2	16
3	Point Sources	17
A	Summary	18
A.1	Status	18
A.2	Comments	18

1 Front

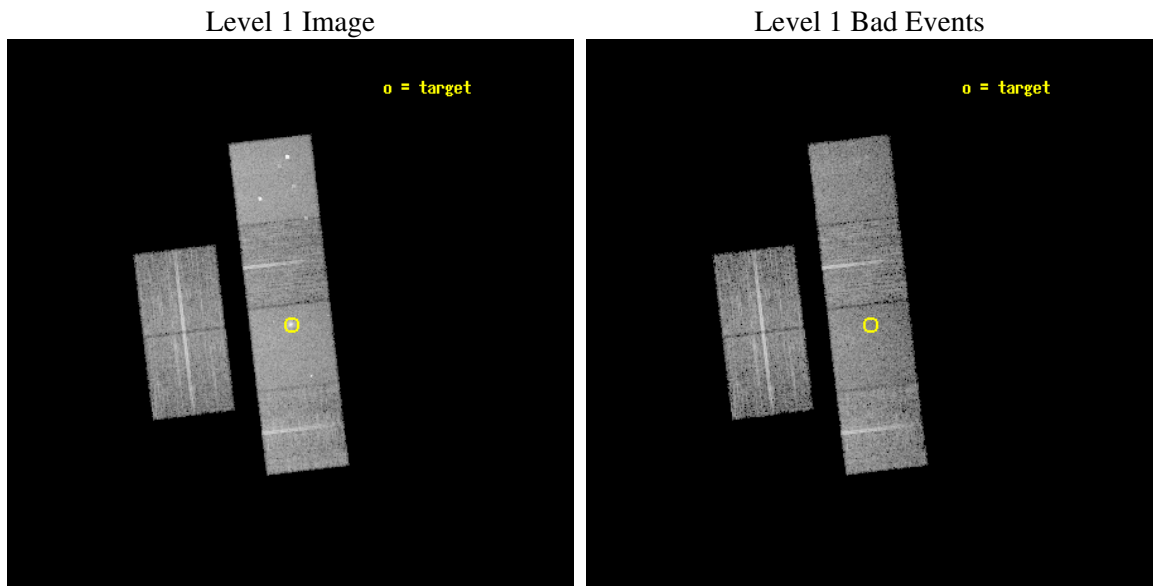
seq_num	700571
obs_id	3132
title	SEARCH FOR AN INTERMEDIATE MASS BLACK HOLE IN THE STARBURST GALAXY NGC2146
observer	Dr Hironori Matsumoto
object	NGC2146
dtcycle	0
cycle	P
ra_targ	94.655417
dec_targ	78.356556
ra_nom	94.666236805235
dec_nom	78.360324998151
roll_nom	83.312856160126
revision	2
ontime	9644.7999640703
livetime	9522.6716995239
ontime2	9641.5589738786
ontime3	9644.7999640703
ontime5	9644.7999640703
ontime6	9644.7999640703
ontime7	9644.7999640703
ontime8	9644.7999640703
l2events	95010



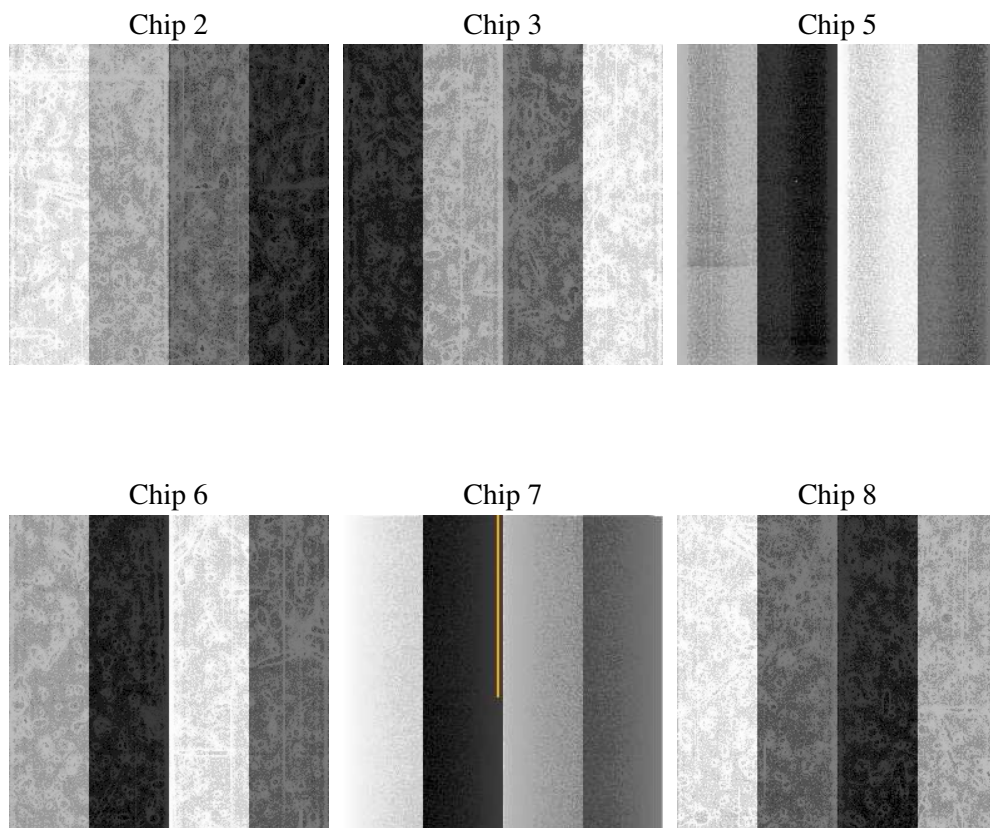
2 OBI

2.1 OBI

2.1.1 Images



2.1.2 Bias



2.1.3 Parameters

obi_num	0
ascdsver	7.6.9
caldbver	3.2.3
date	2006-10-04T14:36:40
revision	2

sched_exp_time	9500.000000
ontime	9859.1230681241
ontime2	9855.8820779324
ontime3	9859.1230681241
ontime5	9859.1230880618
ontime6	9859.1230681241
ontime7	9859.1230681241
ontime8	9859.1230681241
l1events	437677

2.1.4 Events

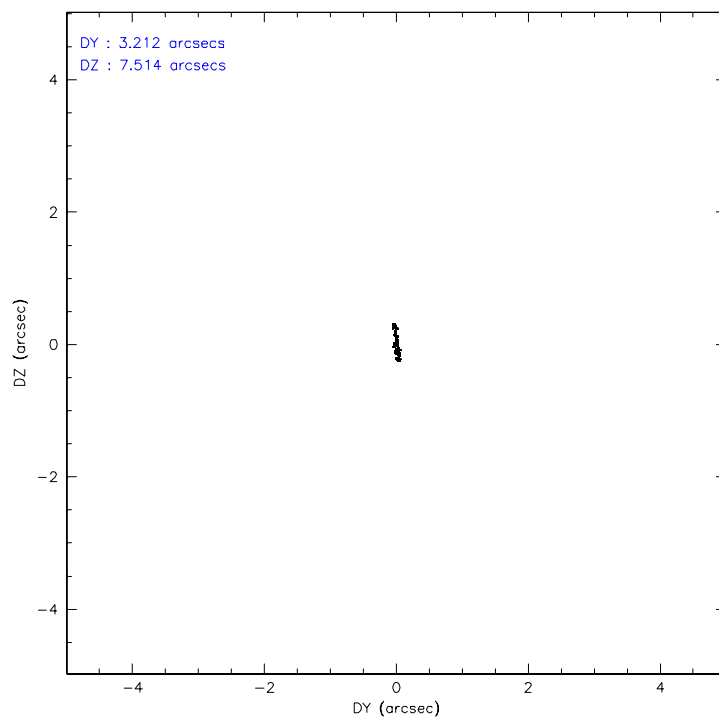
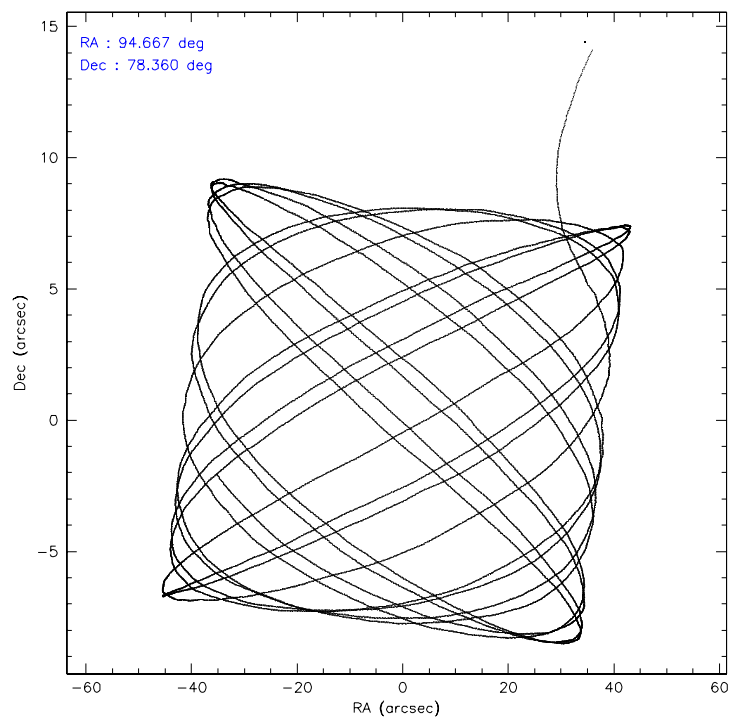
	ccd 2	ccd 3	ccd 5	ccd 6	ccd 7	ccd 8
level 1 events	61737	60327	91780	62542	84017	77274
rejected events	54674	53046	51171	55484	50445	61367
rejected %	88%	87%	55%	88%	60%	79%

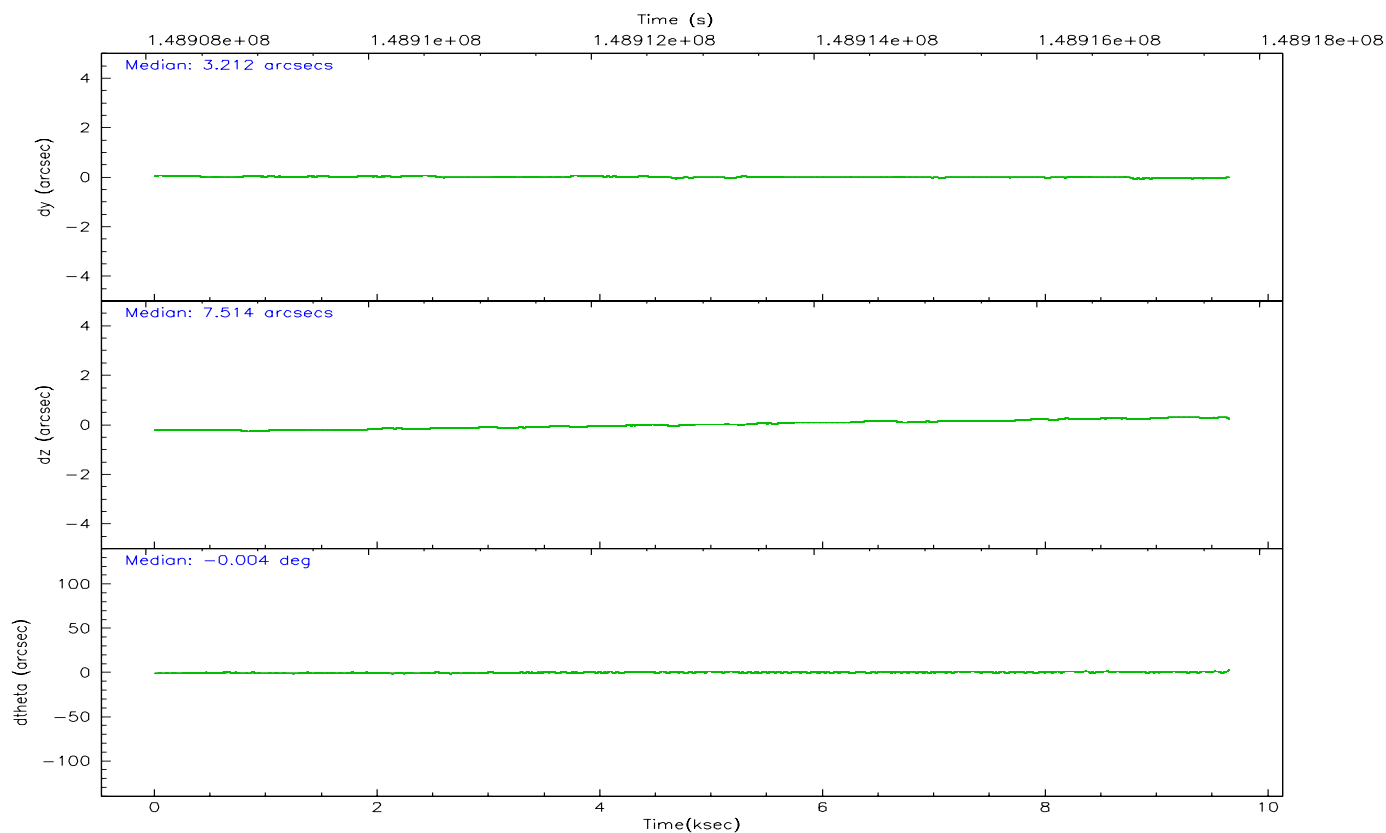
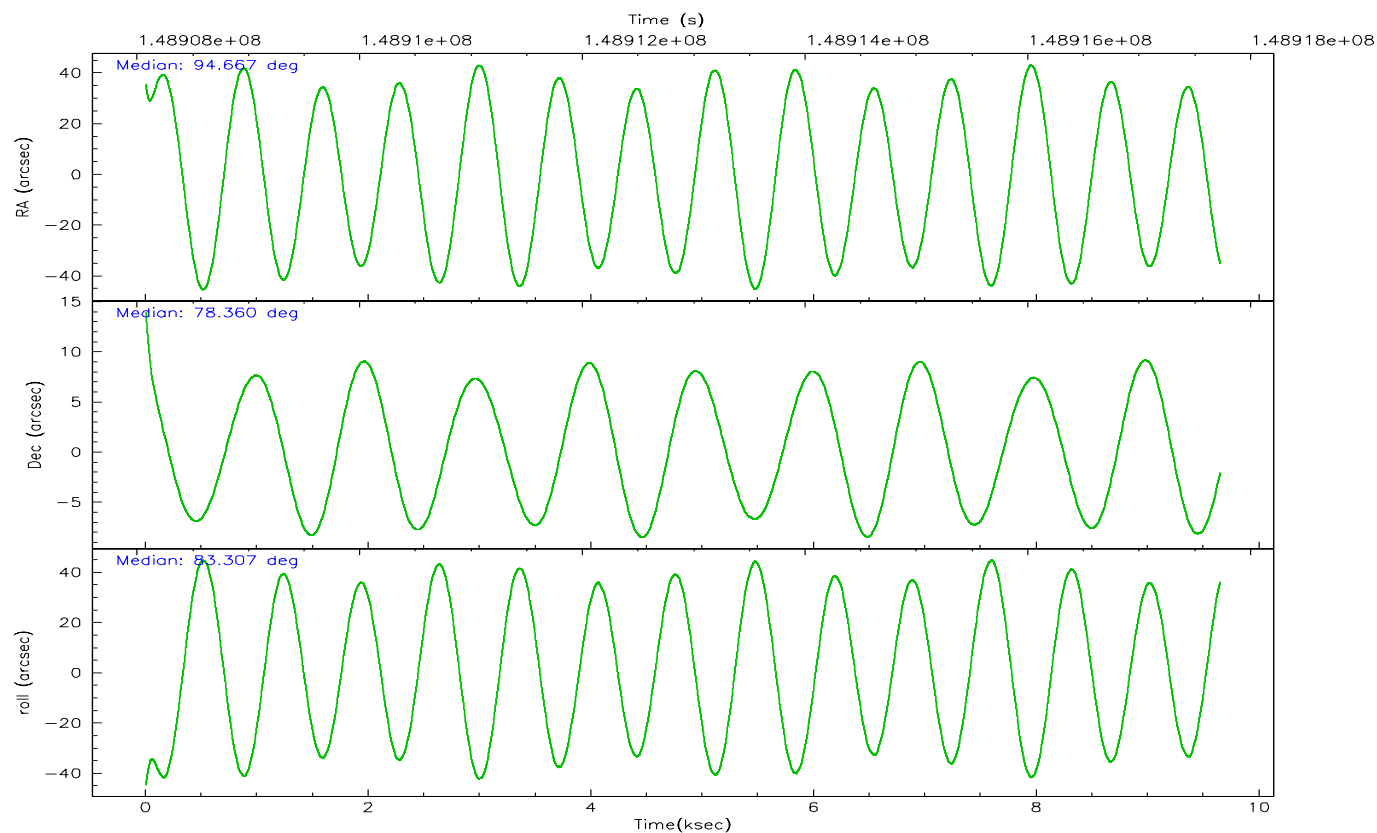
	ccd 2	ccd 3	ccd 5	ccd 6	ccd 7	ccd 8
grade 0 events	3209	3548	4640	2894	2614	5108
	5%	5%	5%	4%	3%	6%
grade 1 events	37	36	166	23	45	45
	0%	0%	0%	0%	0%	0%
grade 2 events	1413	1386	12434	1495	8592	3450
	2%	2%	13%	2%	10%	4%
grade 3 events	685	647	927	721	1953	1671
	1%	1%	1%	1%	2%	2%
grade 4 events	692	668	949	683	1857	1649
	1%	1%	1%	1%	2%	2%
grade 5 events	2362	2550	4243	2773	5287	3478
	3%	4%	4%	4%	6%	4%
grade 6 events	1219	1178	22600	1450	19270	4277
	1%	1%	24%	2%	22%	5%
grade 7 events	52120	50314	45821	52503	44399	57596
	84%	83%	49%	83%	52%	74%

2.2 Compared Parameters

Parameter	Planned	Actual	Parameter	Planned	Actual
Instrument	ACIS	ACIS	Obspar format version number	6	6
Detector	ACIS-235678	ACIS-235678	Obspar file type	PREDICTED	ACTUAL
Grating	NONE	NONE	Obspar update status	NONE	UPDATED
Data mode	FAINT	FAINT	Number of optional ACIS chips dropped	0	0
Observation mode	POINTING	POINTING	On-chip summing requested	N	N
Pointing RA	94.720972	94.66623680523534	Subarray requested	NONE	NONE
Pointing Dec	78.335501	78.36032499815093	Alternating exposures requested	N	N
Pointing Roll	83.102632	83.31285616012622	Primary exposure time	0.000000	3.2
SIM focus pos (mm)	-0.684267	-0.6828225247311905			
SIM defocus (mm)	0	0.001444936568705701			
SIM translation stage pos (mm)	-190.132523	-190.1400660498719			
SIM translation stage offset (mm)	0	0.00754346686406393			
Observation start time	148908233.184000	148907076.21131			
Observation start date	2002-09-20T11:22:49	2002-09-20T11:04:36			
Observation end time	148917733.184000	148918348.13678			
Observation end date	2002-09-20T14:01:09	2002-09-20T14:12:28			
Read mode	TIMED	TIMED			

2.3 Aspect



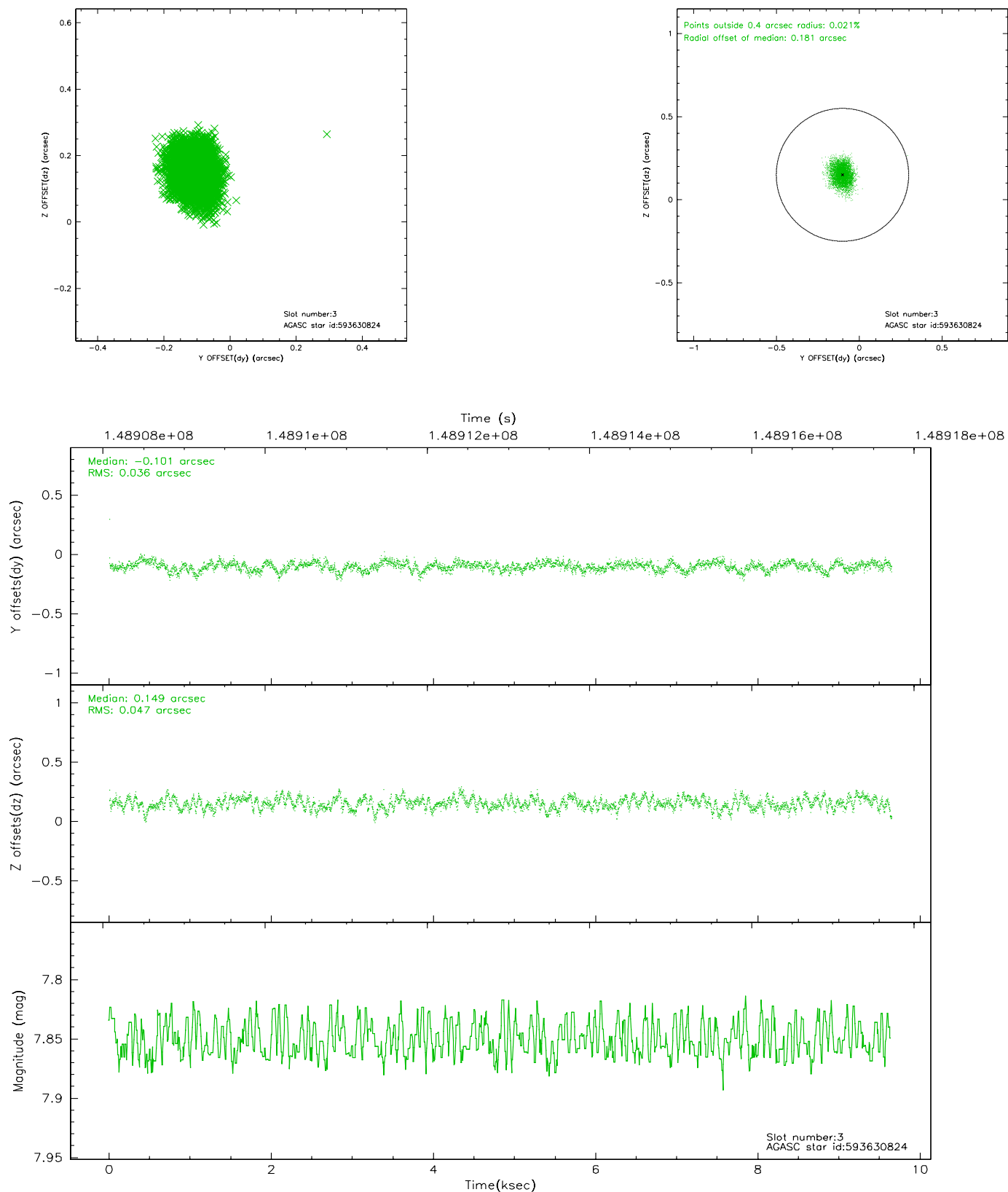


Slot Statistics

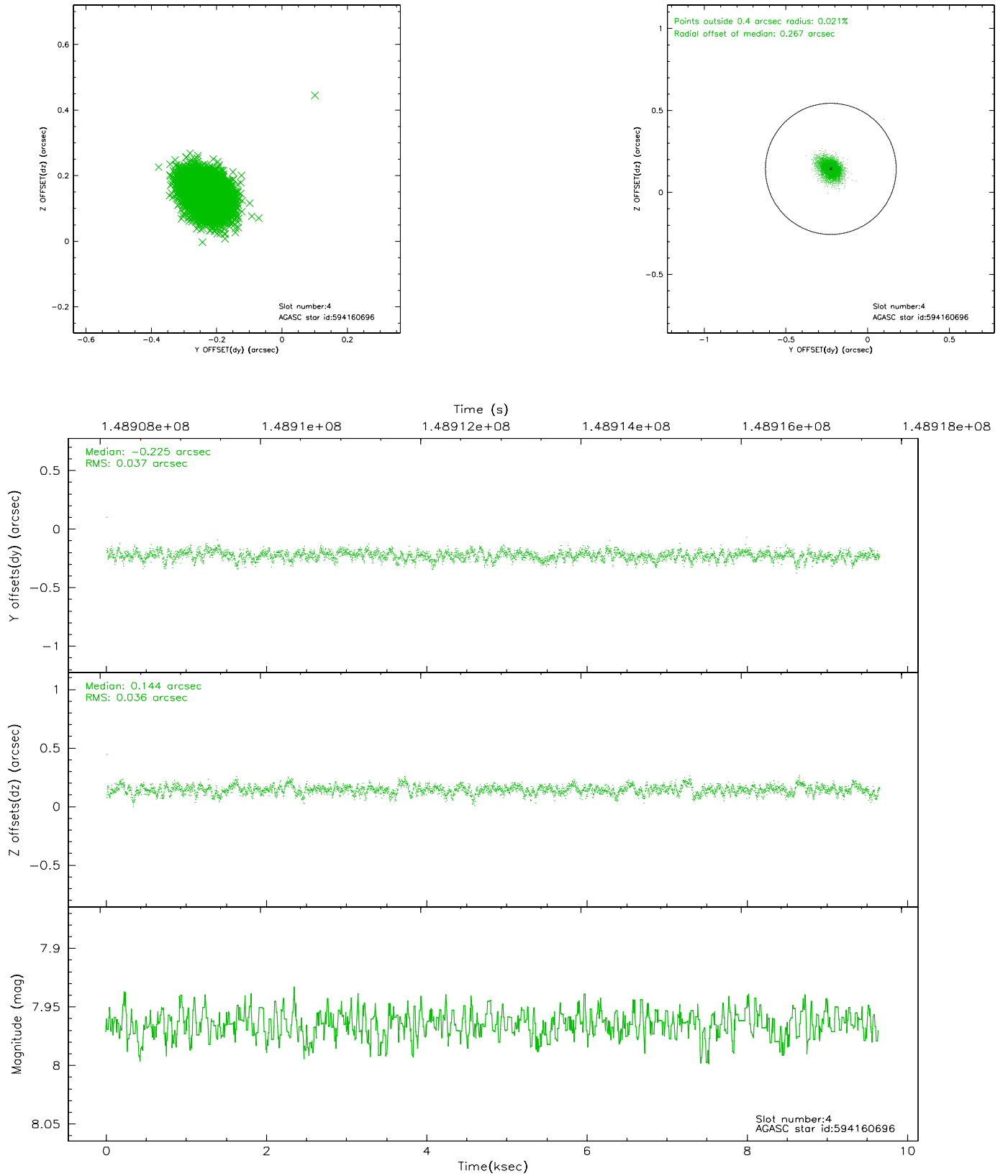
slot	status	id	mag	n_pts	med_dy	med_dz	dr1	dr2	ra	dec	mean_y	mean_z
0	FID	ACIS-S-2	7.11	2353	-0.001	0.020	0.007	0.011	0.000000	0.000000	-755.87	-1728.68
1	FID	ACIS-S-4	7.20	2353	-0.037	-0.005	0.005	0.009	0.000000	0.000000	2157.13	179.19
2	FID	ACIS-S-5	7.24	2353	0.007	-0.006	0.007	0.011	0.000000	0.000000	-1807.98	173.51
3	GUIDE	593630824	7.85	4706	-0.101	0.149	0.063	0.102	97.139560	77.959365	-1089.16	-1960.20
4	GUIDE	594160696	7.96	4707	-0.225	0.144	0.054	0.091	96.554720	78.795378	1816.94	-1071.59
5	GUIDE	593628560	8.25	4705	0.066	-0.126	0.075	0.126	92.260818	78.027017	-1284.70	1694.84
6	GUIDE	593631272	8.36	4707	0.302	0.024	0.073	0.118	97.229274	77.907214	-1263.52	-2057.07
7	GUIDE	594155200	9.11	4705	-0.045	-0.190	0.069	0.110	91.887725	78.921956	1907.15	2204.31

2.4 Star Slots

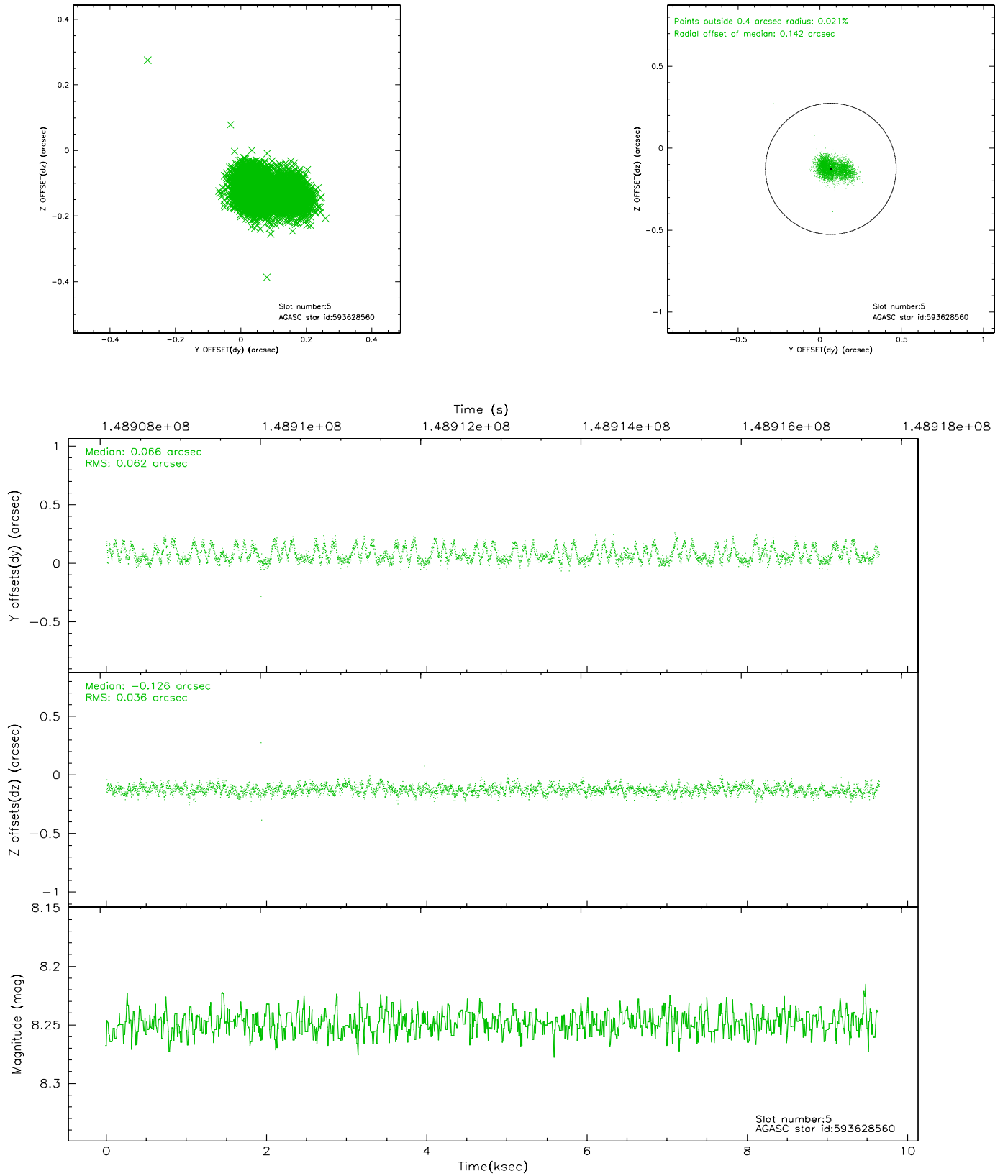
2.4.1 Slot 3



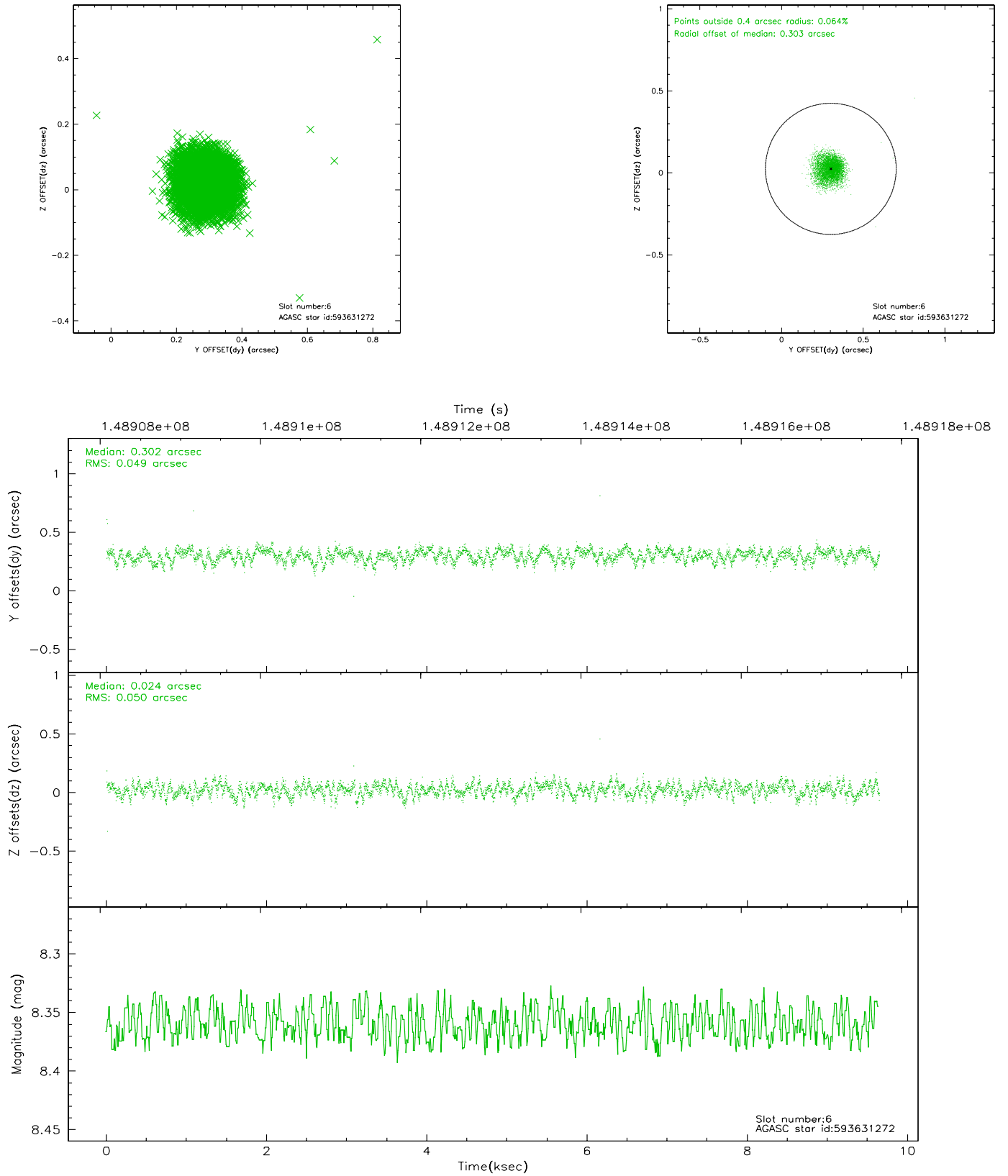
2.4.2 Slot 4



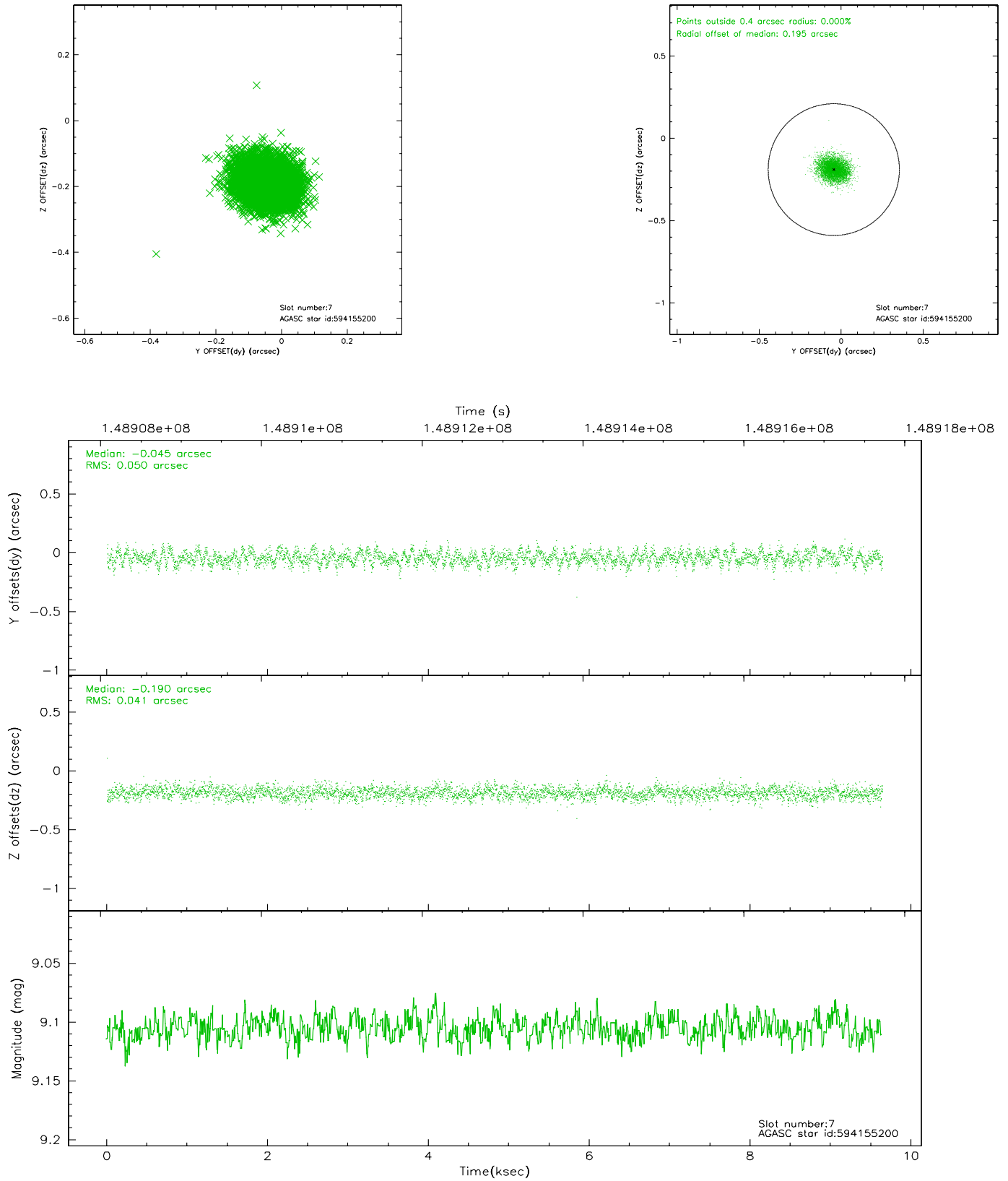
2.4.3 Slot 5



2.4.4 Slot 6

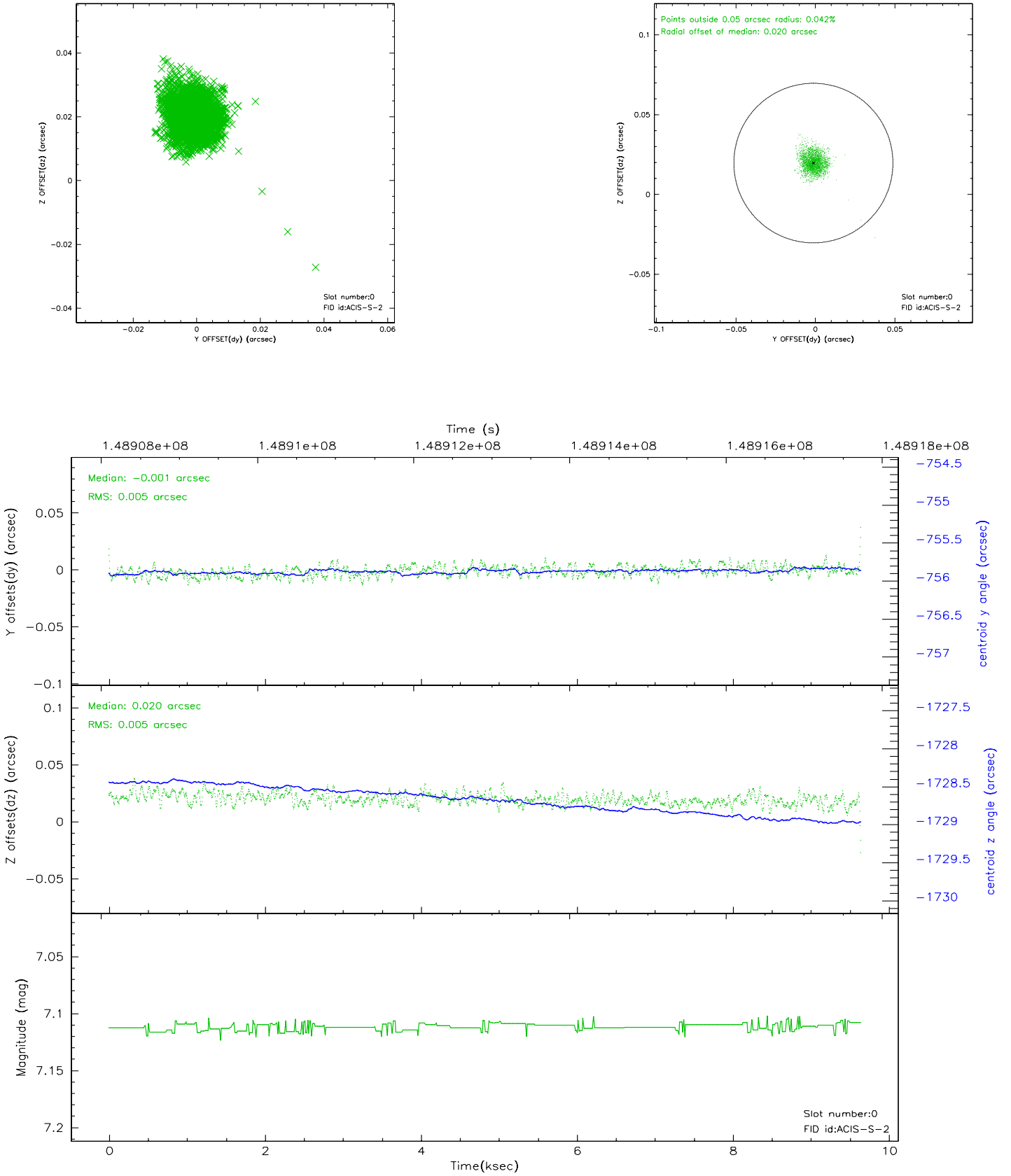


2.4.5 Slot 7

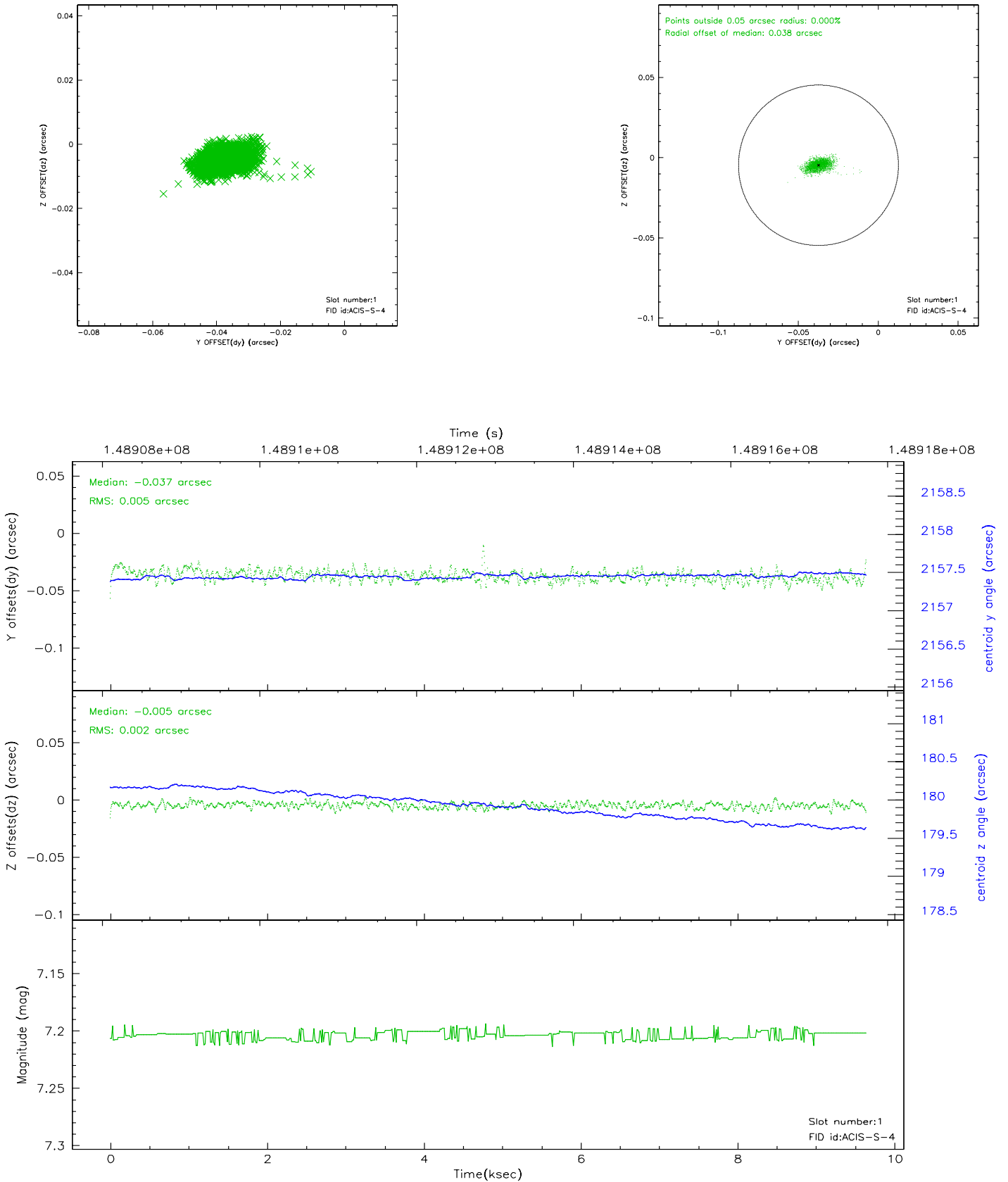


2.5 FID Slots

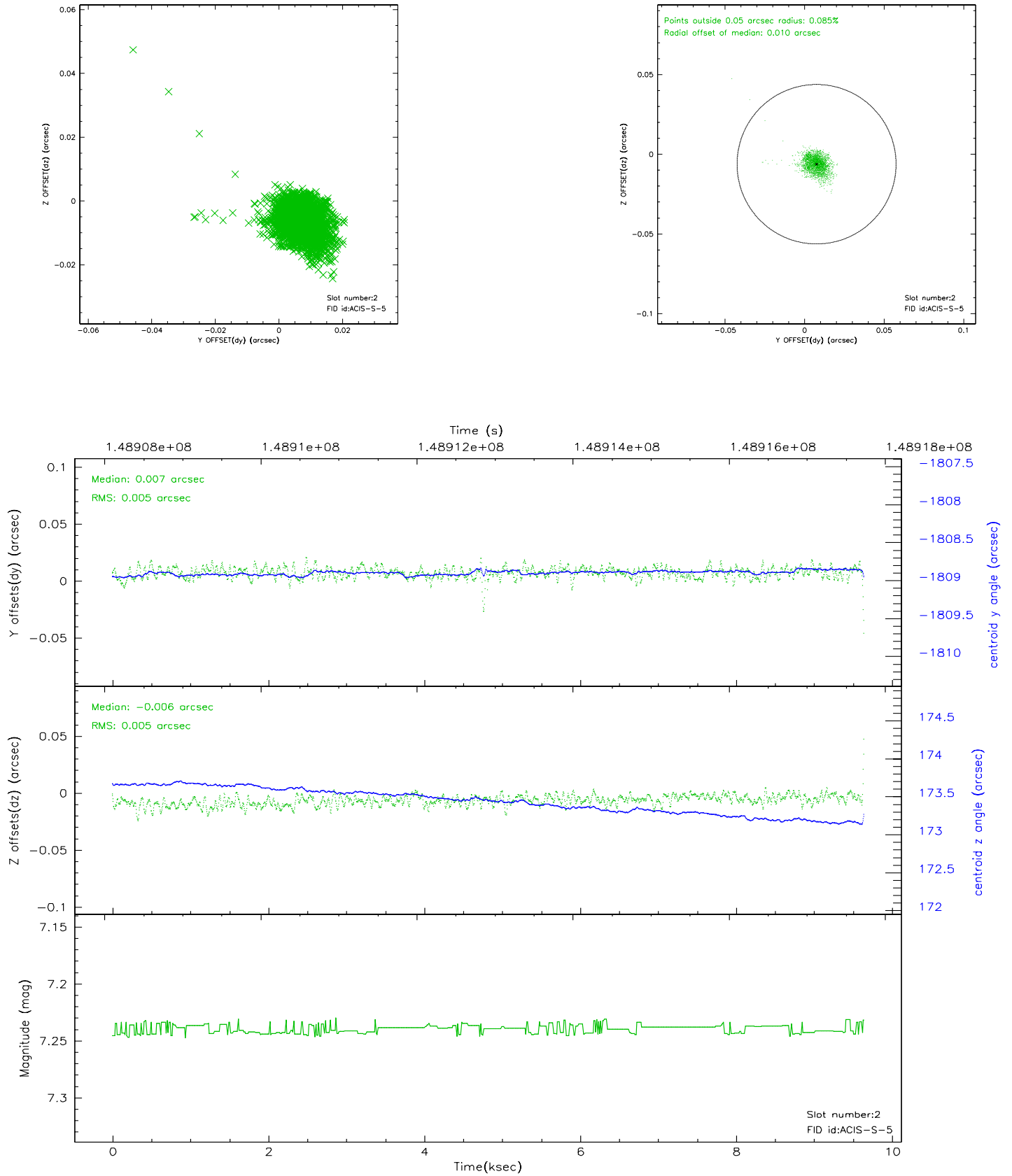
2.5.1 Slot 0



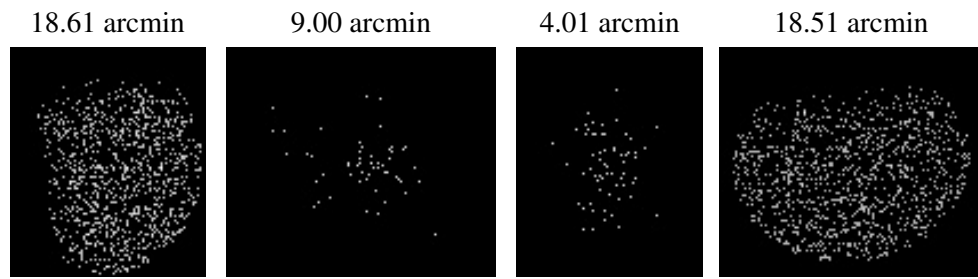
2.5.2 Slot 1



2.5.3 Slot 2



3 Point Sources



A Summary

A.1 Status

V&V Scientist	Jen Lauer
V&V Date (YYYY-MM-DD)	2006.10.04
V&V Edition	1
V&V Disposition and Status	OK
V&V Charge Time	9.644

A.2 Comments

Monitor constraint met.