

# V&V Reference Report

## L2 ASCDS Version : 8.4.5

Observation 3072 - L2 Version 3  
Chandra X-Ray Center

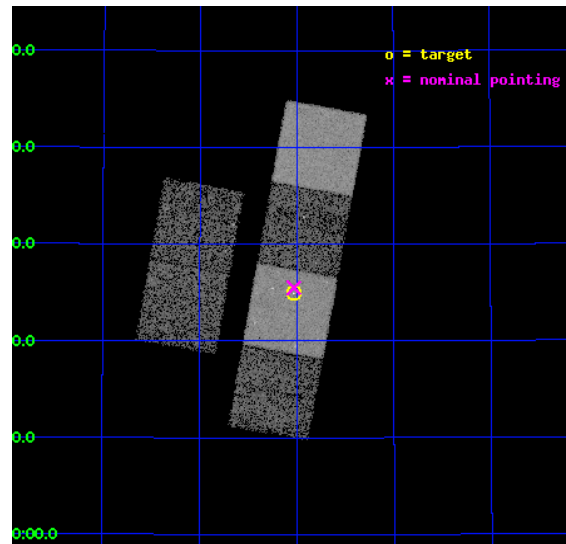
L2 Processing Date : Oct 21 2012

## Contents

<b>1</b>	<b>Front</b>	<b>2</b>
<b>2</b>	<b>OBI</b>	<b>3</b>
2.1	OBI . . . . .	3
2.1.1	Images . . . . .	3
2.1.2	Bias . . . . .	3
2.1.3	Parameters . . . . .	4
2.1.4	Events . . . . .	4
2.2	Compared Parameters . . . . .	5
2.3	Aspect . . . . .	6
2.4	Star Slots . . . . .	9
2.4.1	Slot 3 . . . . .	9
2.4.2	Slot 4 . . . . .	10
2.4.3	Slot 5 . . . . .	11
2.4.4	Slot 6 . . . . .	12
2.4.5	Slot 7 . . . . .	13
2.5	FID Slots . . . . .	14
2.5.1	Slot 0 . . . . .	14
2.5.2	Slot 1 . . . . .	15
2.5.3	Slot 2 . . . . .	16
<b>A</b>	<b>Summary</b>	<b>17</b>
A.1	Status . . . . .	17
A.2	Comments . . . . .	17

# 1 Front

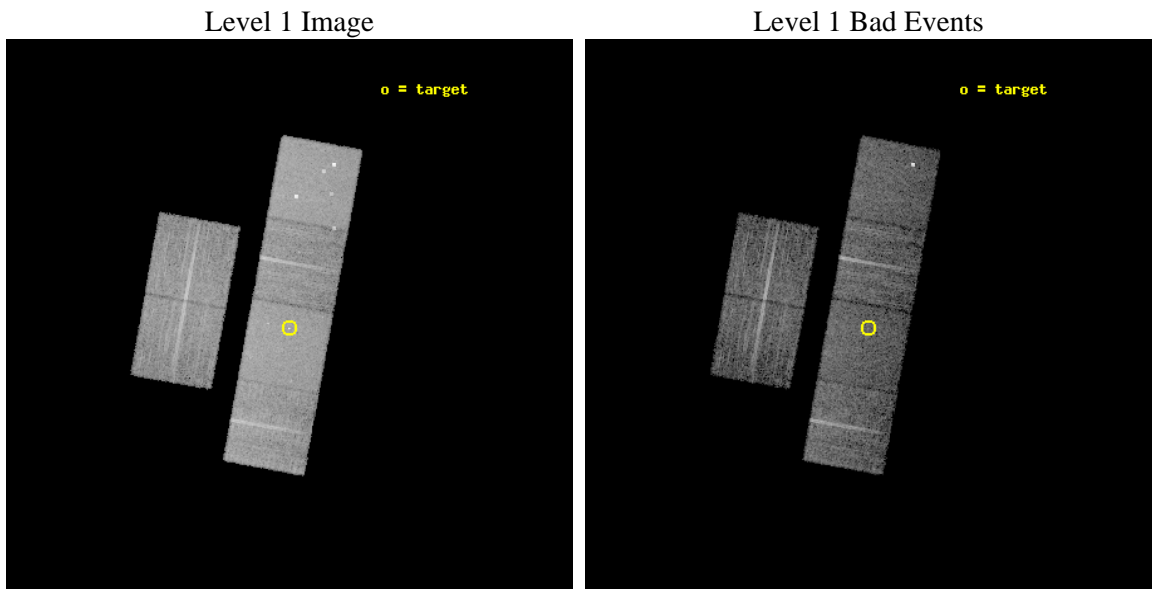
seq_num	700511	Sequence number
obs_id	3072	Observation id
title	X-RAY WEAK BROAD-LINE QUASARS: ABSORPTION OR INTRINSIC X_RAY WEAKNESS ?	Proposal title
observer	Dr Guido Risaliti	Principal investigator
object	HS 1230+4741	Source name
dtcycle	0	&#160
cycle	P	events from which exps? Prim/Second/Both
ra_targ	188.2575	Observer's specified target RA [deg]
dec_targ	47.415417	Observer's specified target Dec [deg]
ra_nom	188.25738679828	Nominal RA [deg]
dec_nom	47.425033383187	Nominal Dec [deg]
roll_nom	100.29865816679	Nominal Roll [deg]
revision	3	Processing version of data
ontime	10051.118020743	Sum of GTIs [s]
livetime	9923.8447123078	Livetime [s]
ontime2	10051.159060746	Sum of GTIs [s]
ontime3	10050.994900733	Sum of GTIs [s]
ontime5	10051.07698074	Sum of GTIs [s]
ontime6	10051.035940737	Sum of GTIs [s]
ontime7	10051.118020743	Sum of GTIs [s]
ontime8	10050.95386076	Sum of GTIs [s]
l2events	93043	Number of level 2 events



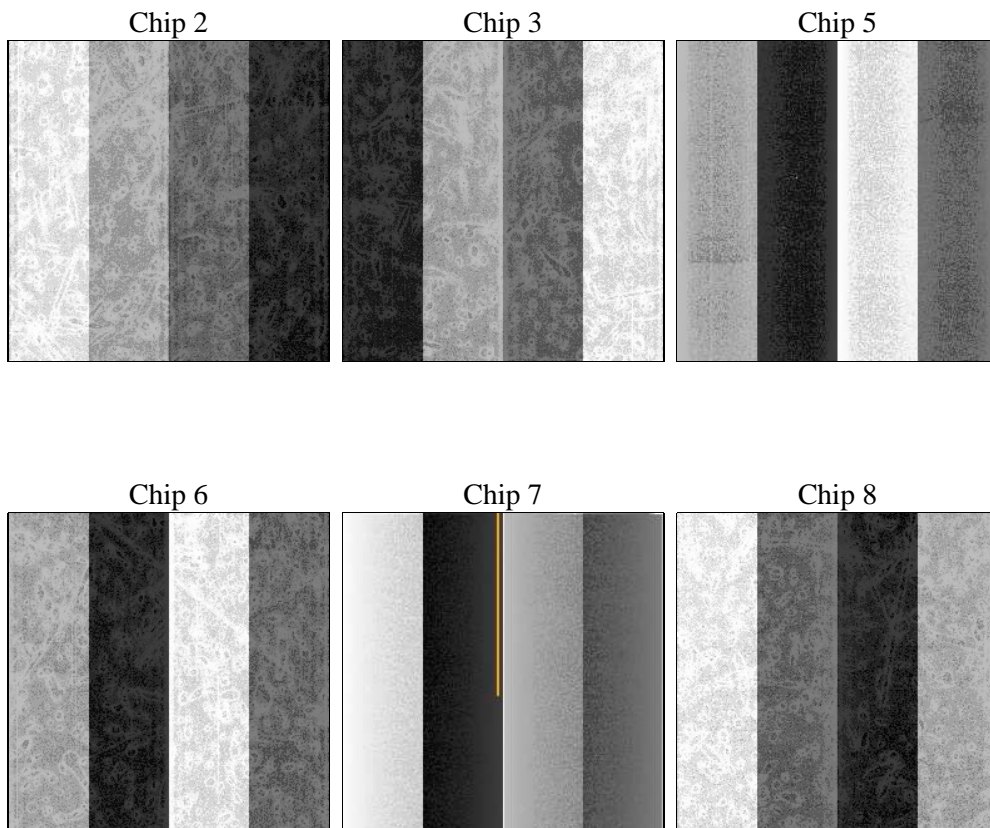
## 2 OBI

### 2.1 OBI

#### 2.1.1 Images



#### 2.1.2 Bias



### 2.1.3 Parameters

obi_num	0	Obi number	sched_exp_time	10000.000000	[s] Scheduled observation exposure time
ascdsver	8.4.5	Processing system revision	ontime	10051.118020743	Sum of GTIs [s]
caldbver	4.5.2	&#160	ontime2	10051.159060746	Sum of GTIs [s]
date	2012-10-21T04:55:03	Date and time of file creation	ontime3	10050.994900733	Sum of GTIs [s]
revision	3	Processing version of data	ontime5	10051.07698074	Sum of GTIs [s]
			ontime6	10051.035940737	Sum of GTIs [s]
			ontime7	10051.118020743	Sum of GTIs [s]
			ontime8	10050.95386076	Sum of GTIs [s]
			l1events	417258	Number of level 1 events

### 2.1.4 Events

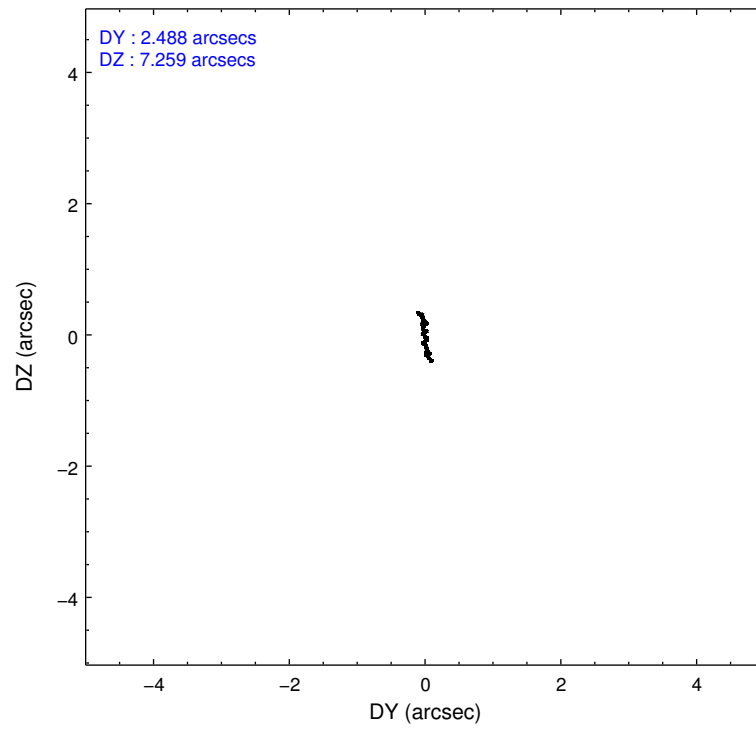
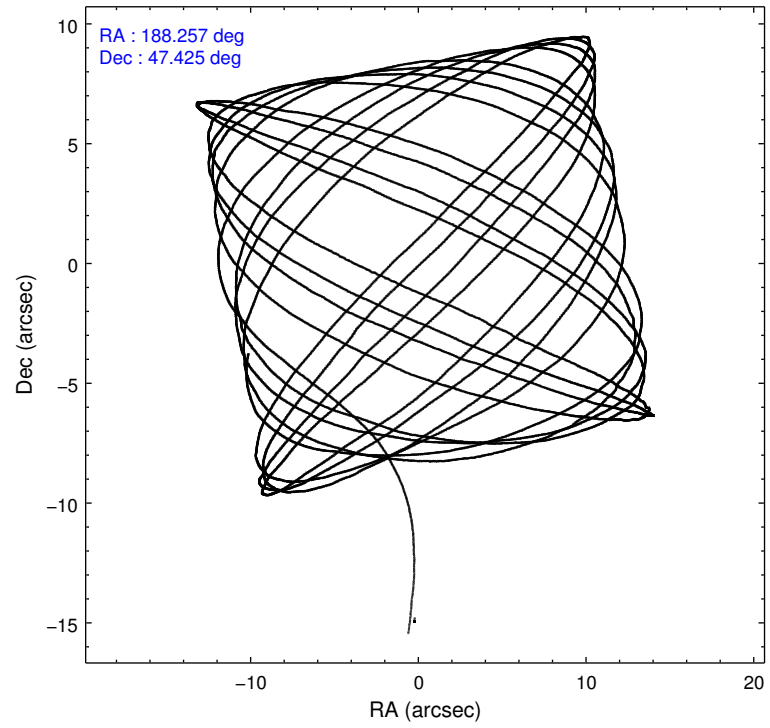
	ccd 2	ccd 3	ccd 5	ccd 6	ccd 7	ccd 8		ccd 2	ccd 3	ccd 5	ccd 6	ccd 7	ccd 8
level 1 events	60594	56122	89970	59231	79523	71818	grade 0 events	3105	2958	6512	2798	3549	4640
rejected events	53539	49474	48360	52173	46082	57059		5%	5%	7%	4%	4%	6%
rejected %	88%	88%	53%	88%	57%	79%	grade 1 events	37	35	111	27	70	43
								0%	0%	0%	0%	0%	0%
							grade 2 events	1457	1166	11685	1444	6661	3201
								2%	2%	12%	2%	8%	4%
							grade 3 events	679	644	1662	683	3054	1593
								1%	1%	1%	1%	3%	2%
							grade 4 events	680	688	1483	683	2942	1450
								1%	1%	1%	1%	3%	2%
							grade 5 events	2302	2483	7466	2657	7432	3439
								3%	4%	8%	4%	9%	4%
							grade 6 events	1138	1195	20296	1454	17255	3881
								1%	2%	22%	2%	21%	5%
							grade 7 events	51196	46953	40755	49485	38560	53571
								84%	83%	45%	83%	48%	74%

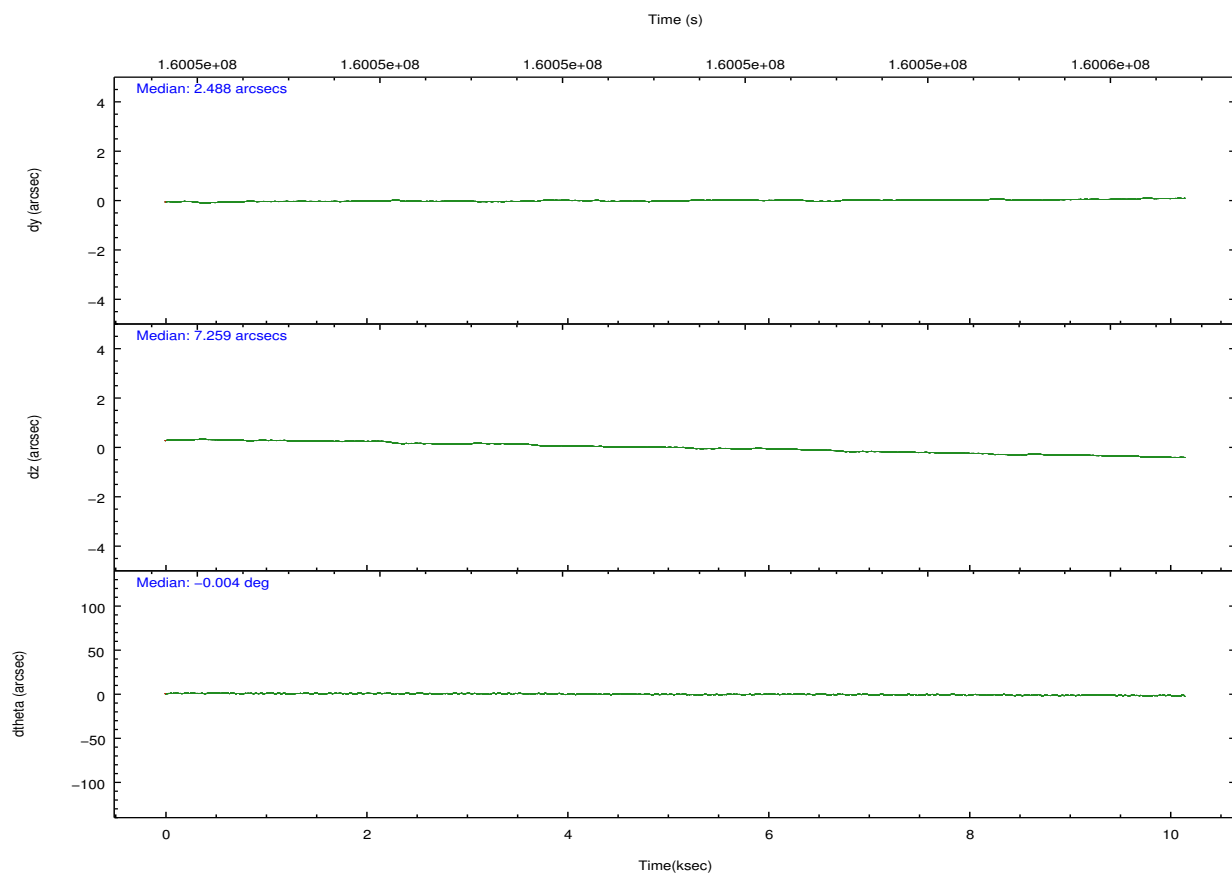
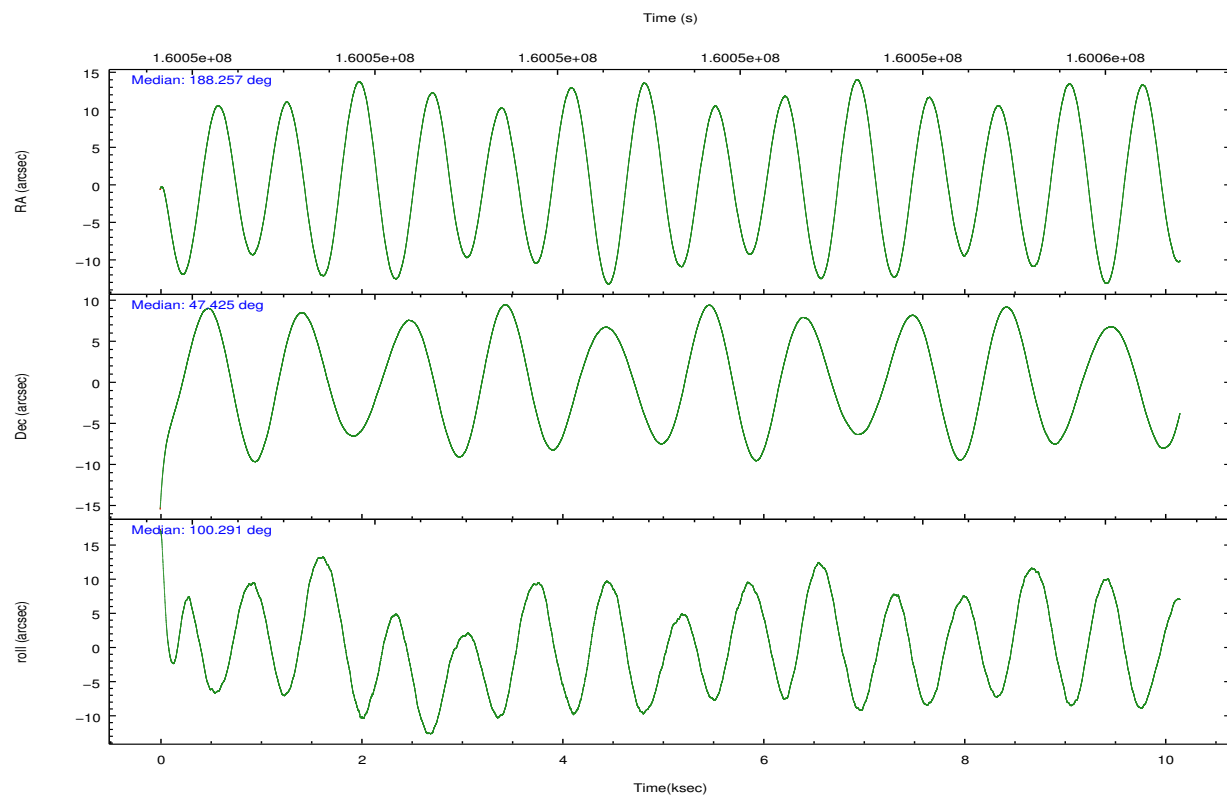


## 2.2 Compared Parameters

Parameter	Planned	Actual	Parameter	Planned	Actual
Instrument	ACIS	ACIS	Obspar format version number	7	7
Detector	ACIS-235678	ACIS-235678	Obspar file type	PREDICTED	ACTUAL
Grating	NONE	NONE	Obspar update status	NONE	UPDATED
Data mode	FAINT	FAINT	Number of optional ACIS chips dropped	0	0
Observation mode	POINTING	POINTING	On-chip summing requested	N	N
[deg] Pointing RA	188.283887	188.2573867982781	Subarray requested	NONE	NONE
[deg] Pointing Dec	47.404552	47.42503338318726	Alternating exposures requested	N	N
[deg] Pointing Roll	100.122486	100.2986581667909	[s] Primary exposure time	0.000000	3.2
[mm] SIM focus pos	-0.684267	-0.6828225247311905			
[mm] SIM defocus	0	0.001444936568705701			
[mm] SIM translation stage pos	-190.132523	-190.1425803651734			
[mm] SIM translation stage offset	0	0.01005778216563158			
[s] Observation start time (MET)	160046301.184000	160045294.01264			
Observation start date	2003-01-27T09:17:17	2003-01-27T09:01:34			
[s] Observation end time (MET)	160056301.184000	160056755.56312			
Observation end date	2003-01-27T12:03:57	2003-01-27T12:12:35			
Read mode	TIMED	TIMED			

## 2.3 Aspect



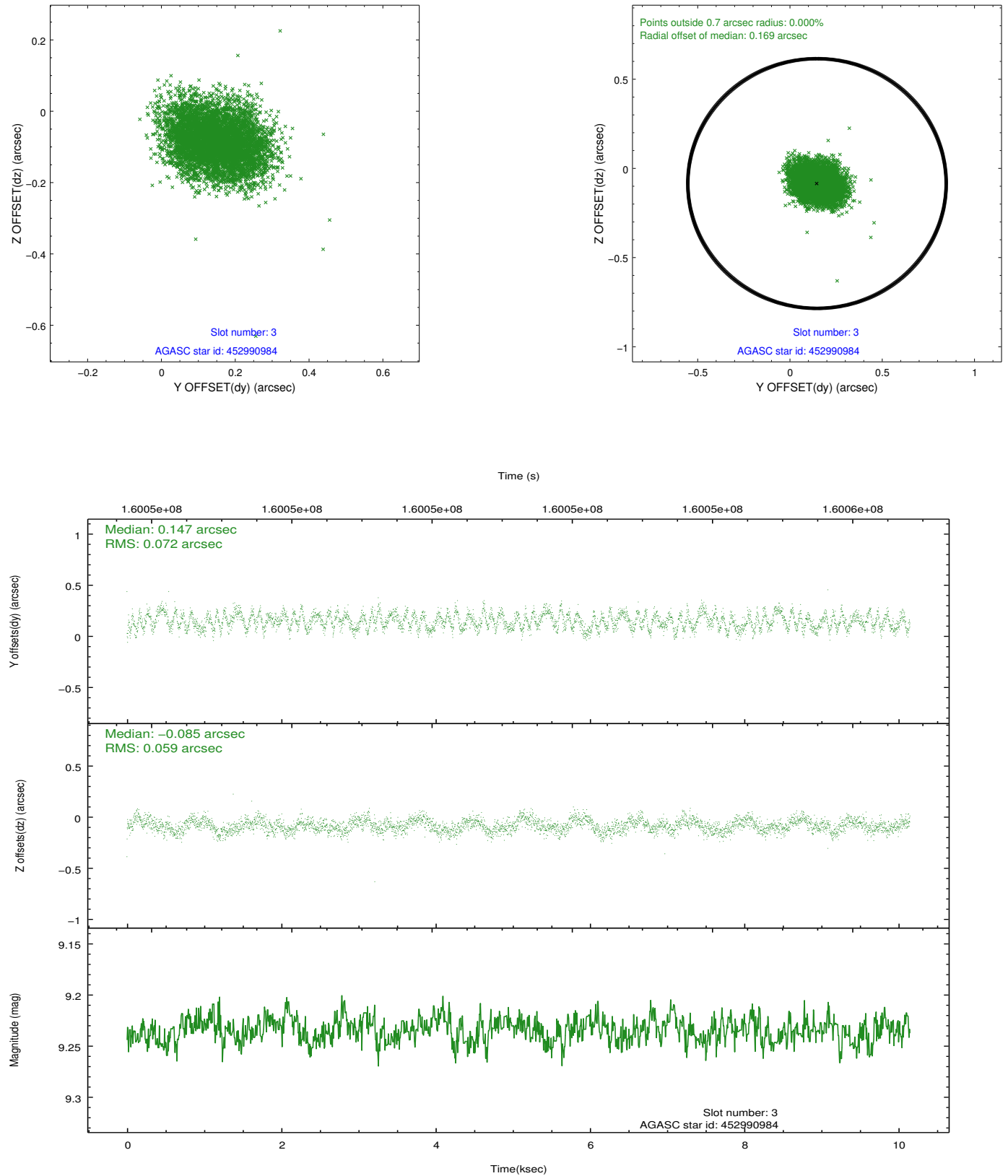


### Slot Statistics

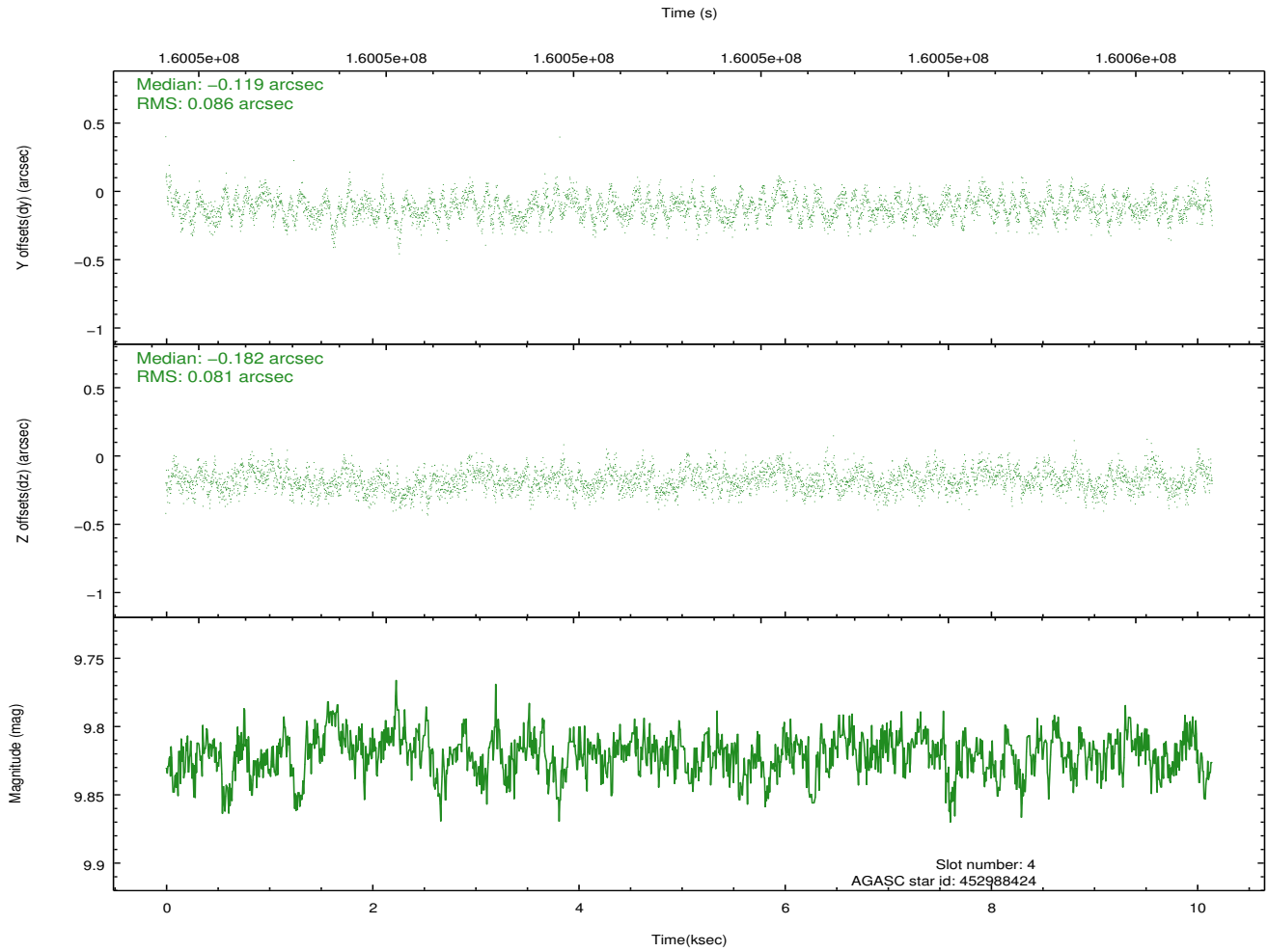
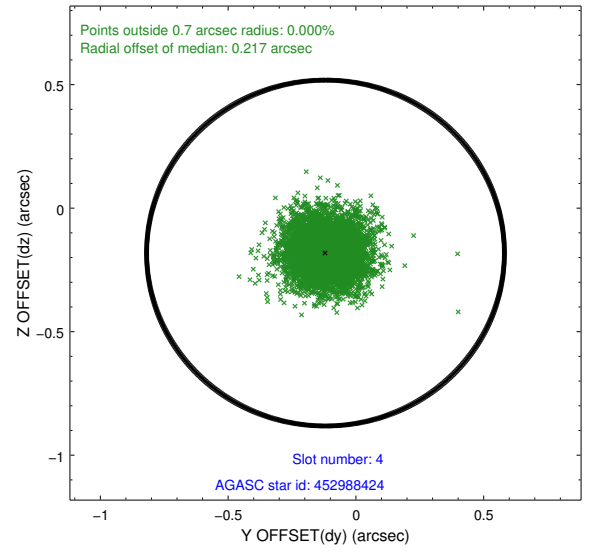
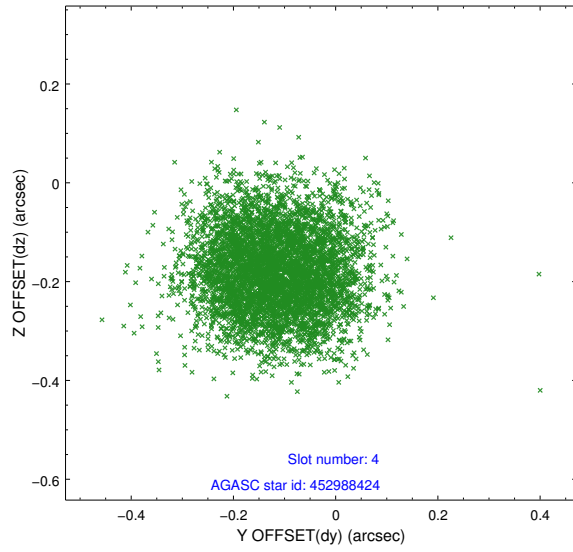
slot	status	id	mag	n_pts	med_dy	med_dz	dr1	dr2	ra	dec	mean_y	mean_z
0	FID	ACIS-S-2	7.11	2476	-0.020	0.007	0.009	0.014	0.000000	0.000000	-755.13	-1728.36
1	FID	ACIS-S-4	7.20	2476	-0.027	0.008	0.007	0.013	0.000000	0.000000	2157.90	179.60
2	FID	ACIS-S-5	7.24	2476	0.016	-0.006	0.007	0.013	0.000000	0.000000	-1807.27	173.84
3	GUIDE	452990984	9.23	4949	0.147	-0.085	0.100	0.155	187.742810	46.960122	-1336.72	1589.07
4	GUIDE	452988424	9.82	4925	-0.119	-0.182	0.126	0.199	187.420717	47.373654	271.42	2089.42
5	GUIDE	452988904	9.51	4945	-0.200	-0.020	0.094	0.153	187.918892	48.028746	2368.63	470.62
6	GUIDE	452993568	10.06	4947	0.084	0.156	0.126	0.212	189.249394	47.034081	-1713.86	-2100.12
7	GUIDE	452991784	9.79	4951	0.084	0.131	0.104	0.167	189.261403	47.058349	-1633.21	-2143.89

## 2.4 Star Slots

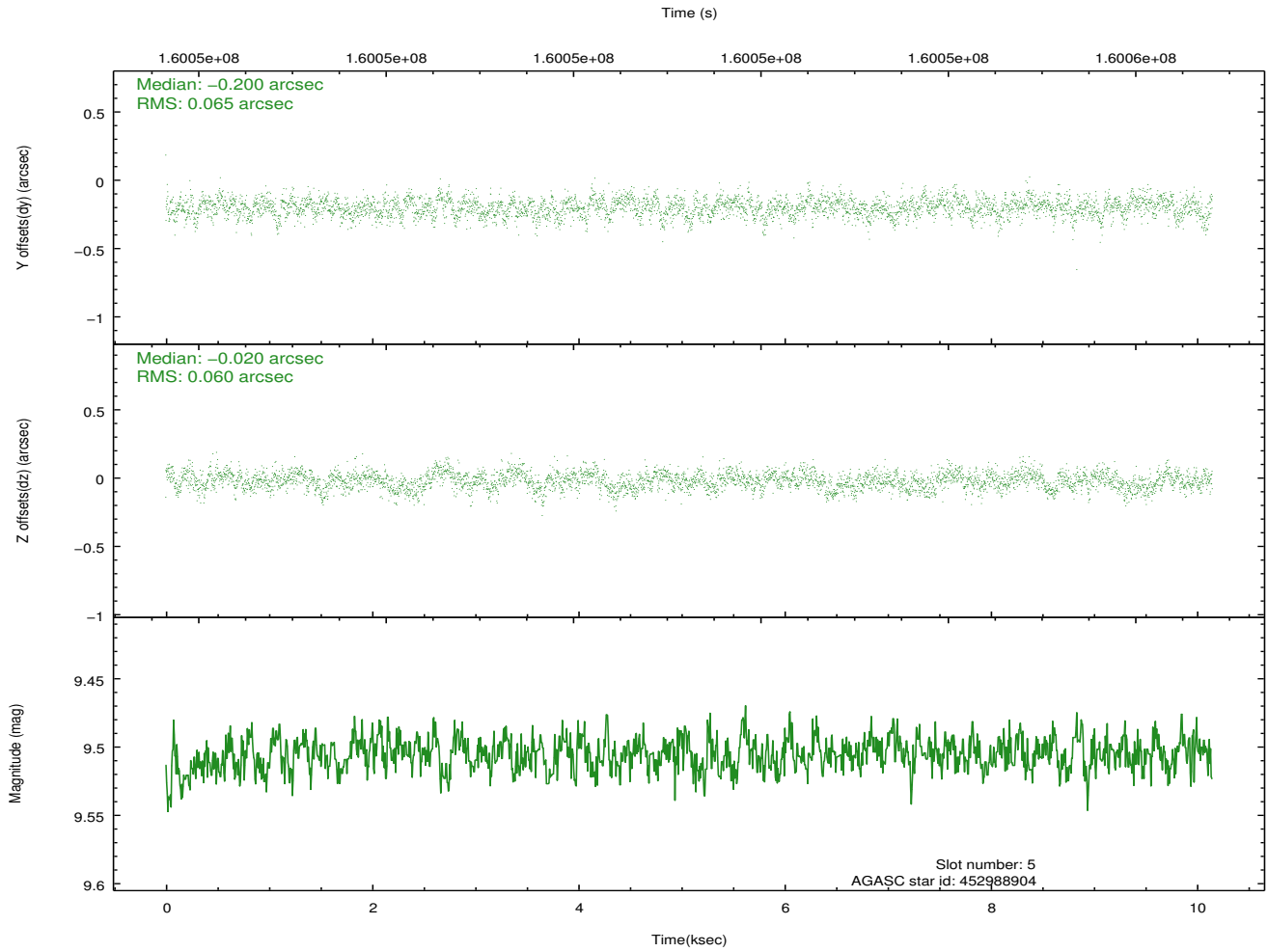
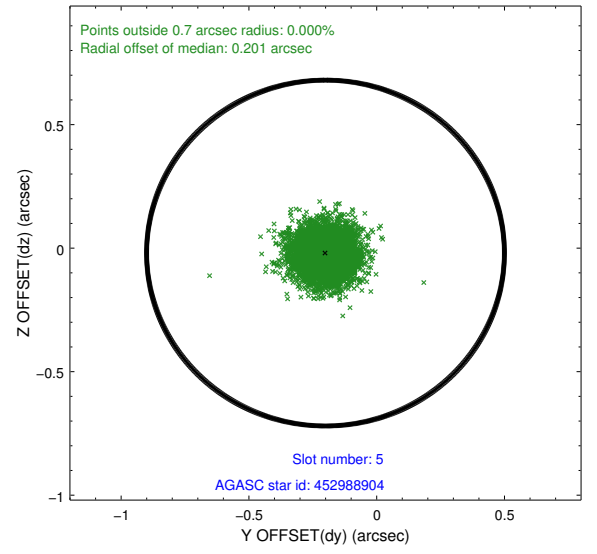
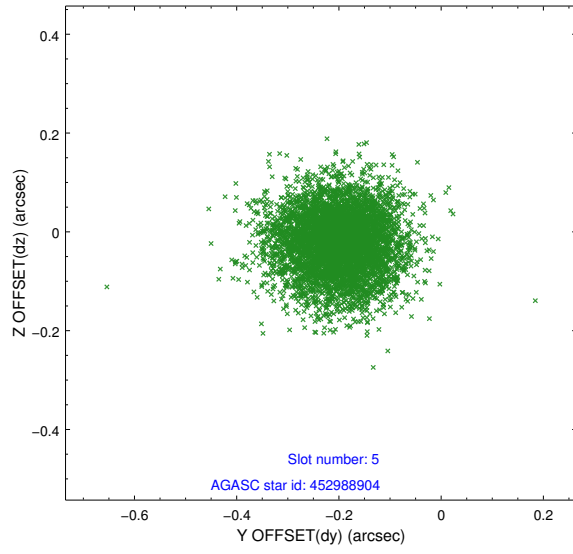
### 2.4.1 Slot 3



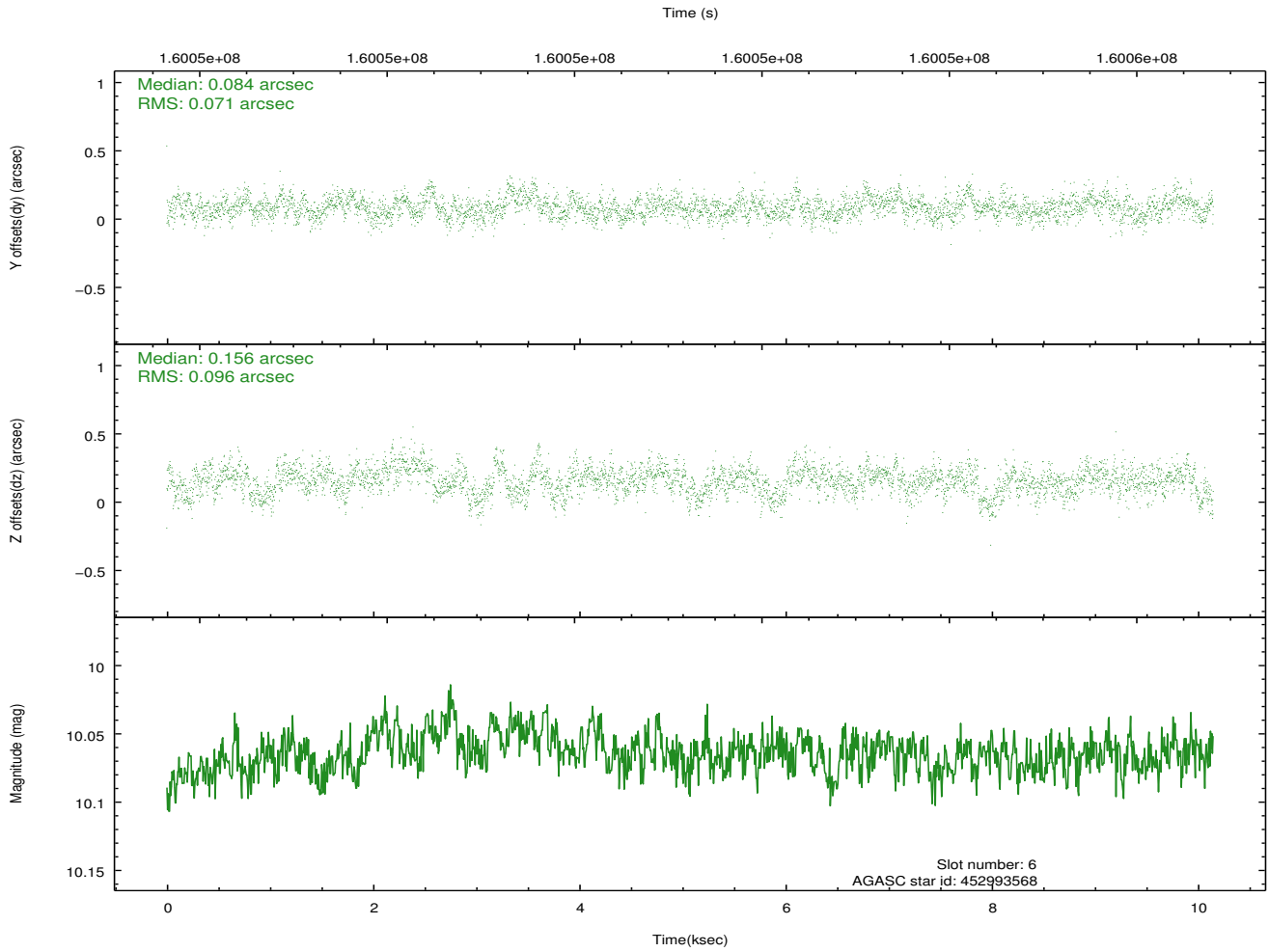
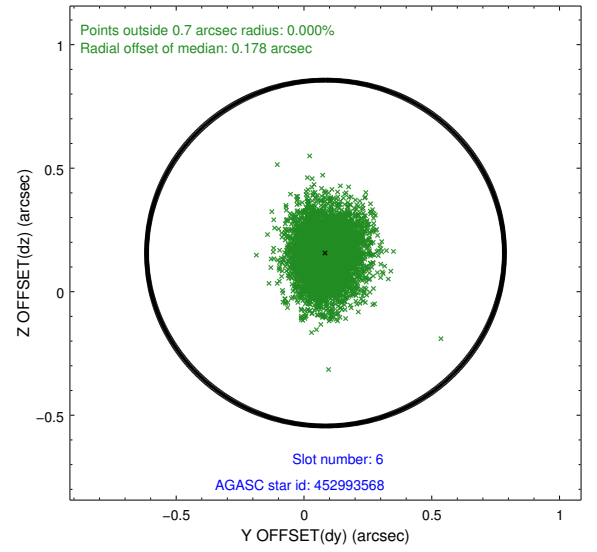
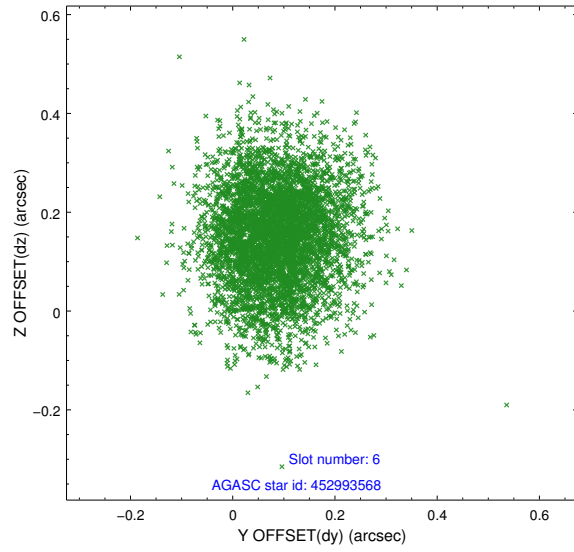
## 2.4.2 Slot 4



### 2.4.3 Slot 5

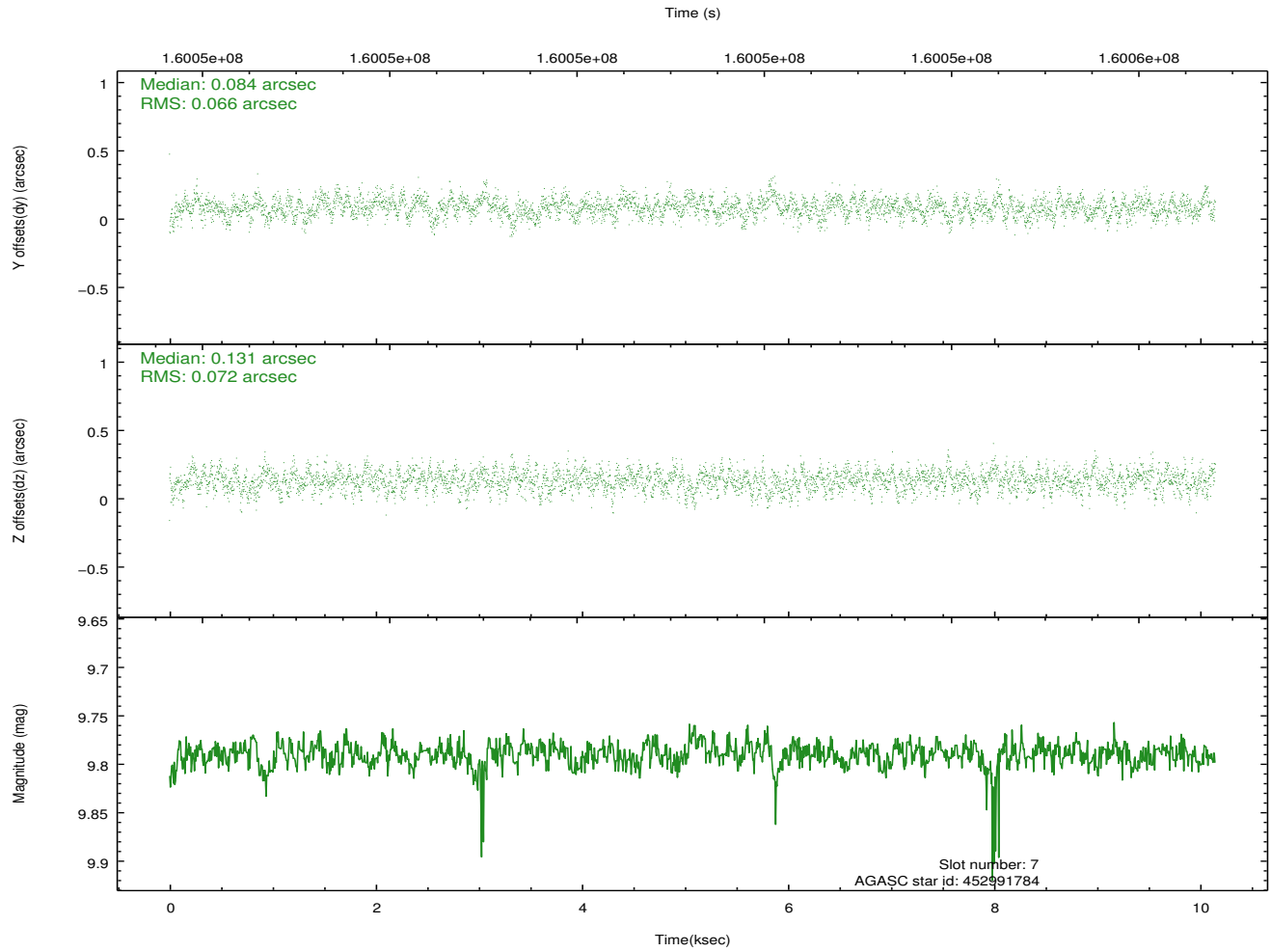
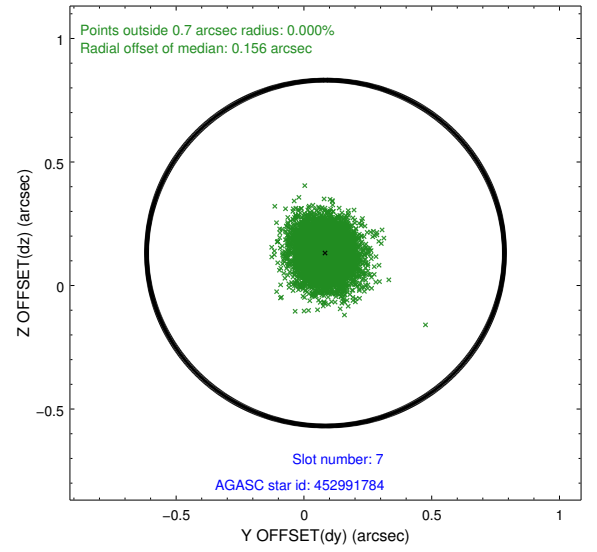
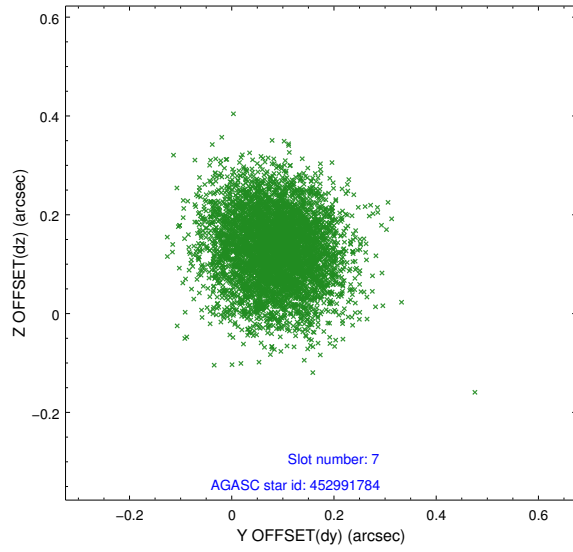


## 2.4.4 Slot 6



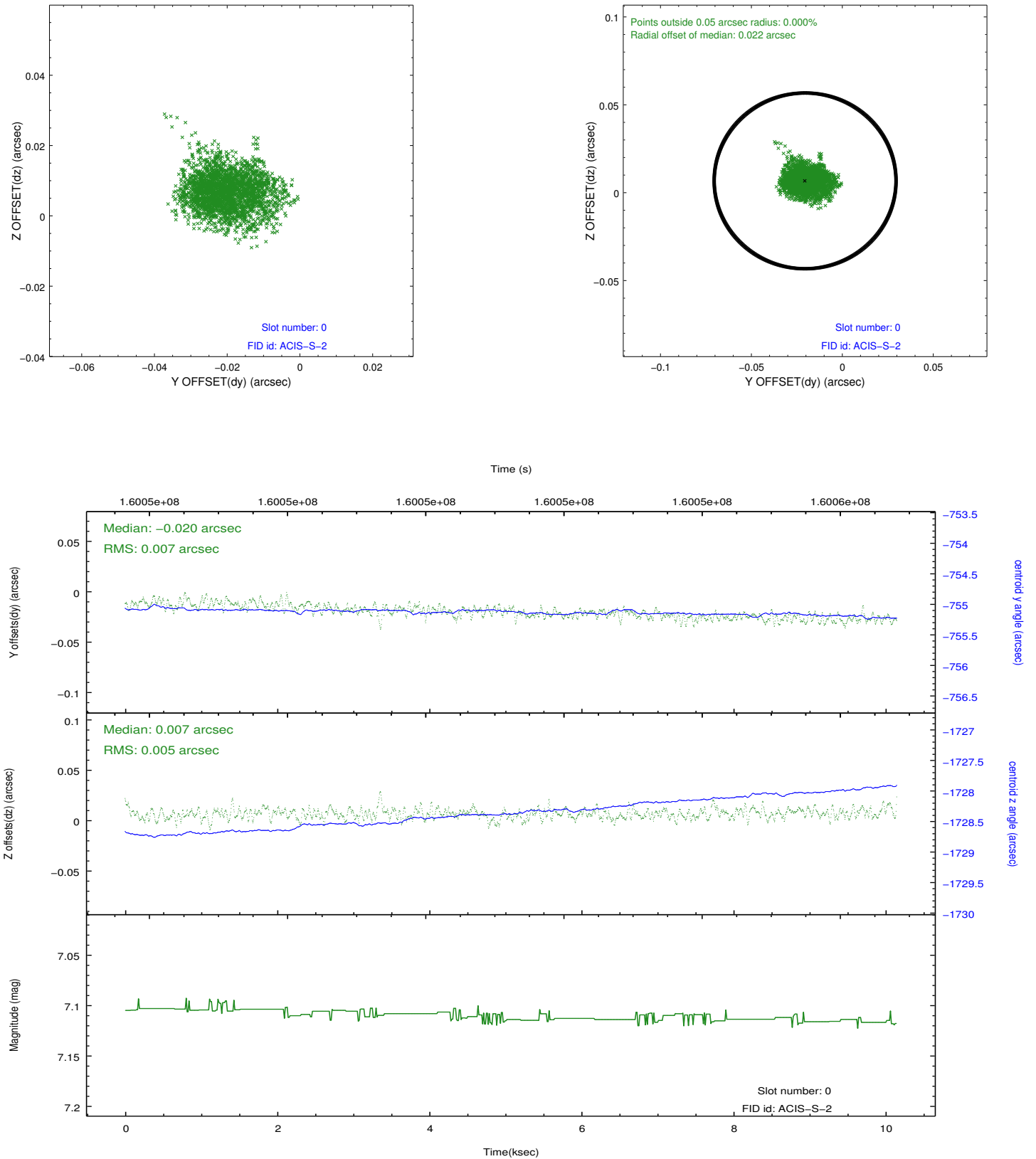


## 2.4.5 Slot 7

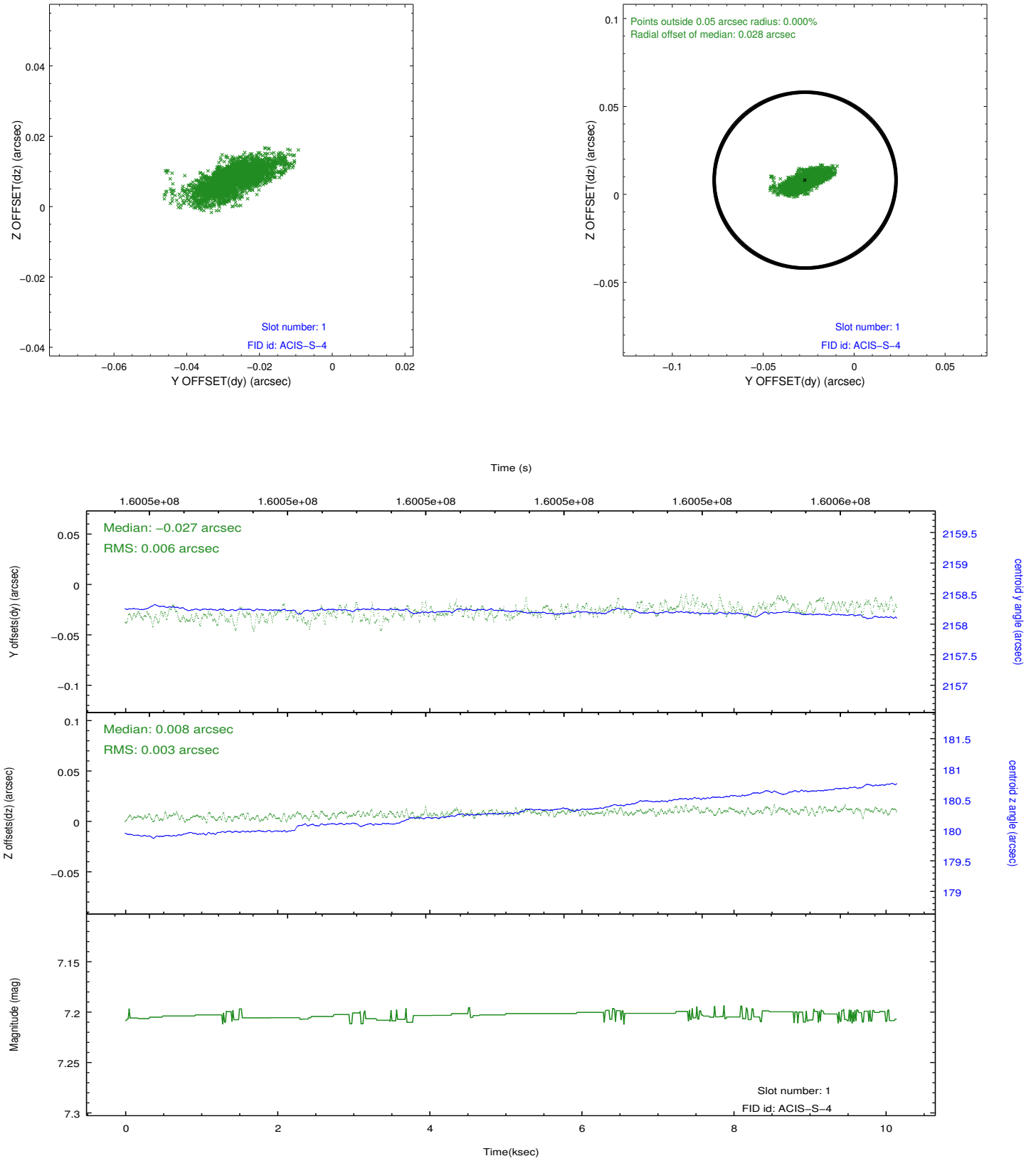


## 2.5 FID Slots

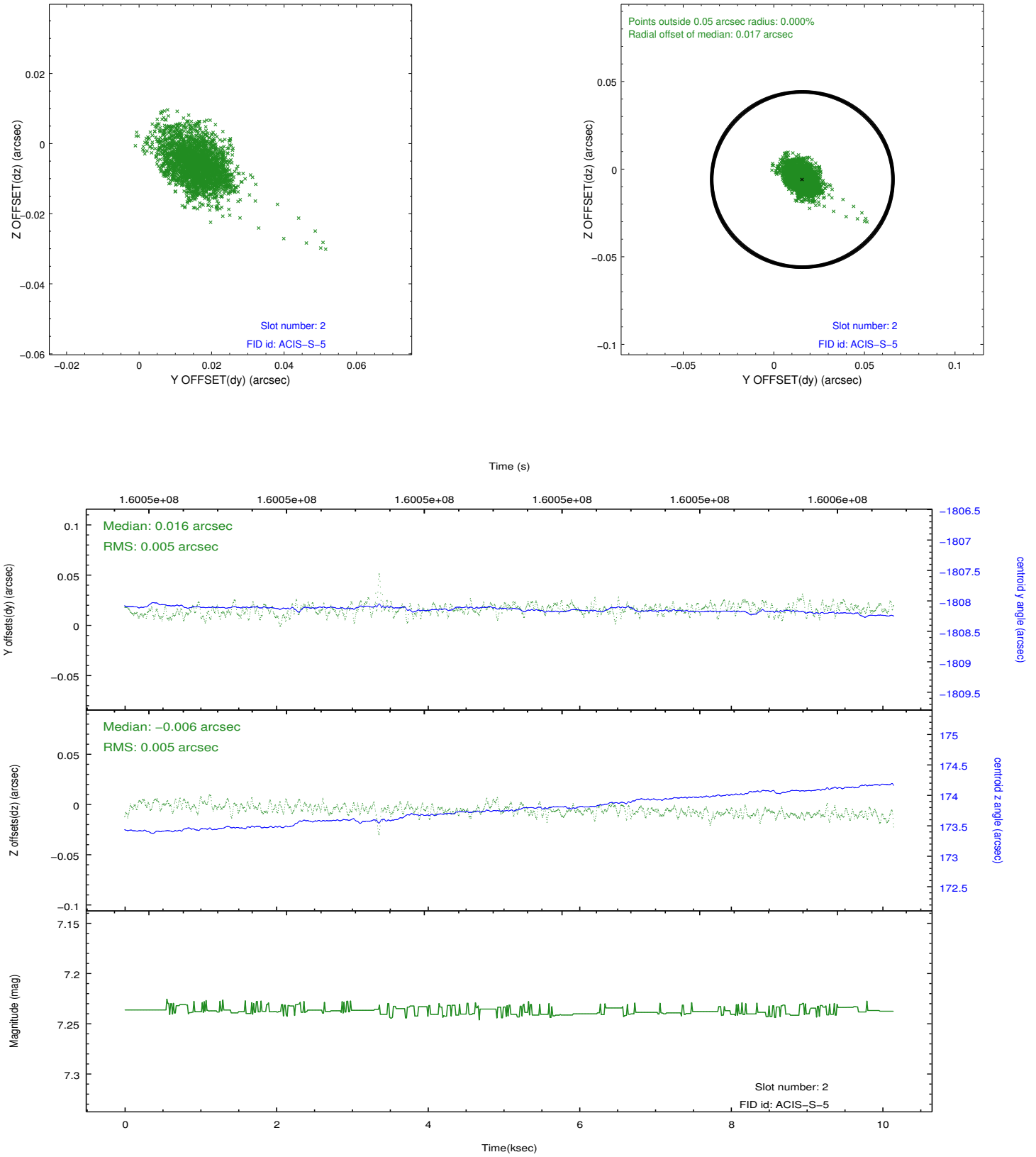
### 2.5.1 Slot 0



## 2.5.2 Slot 1



### 2.5.3 Slot 2



## **A Summary**

### **A.1 Status**

V&V Scientist	Jen Lauer
V&V Date (YYYY-MM-DD)	2012.11.01
V&V Edition	1
V&V Disposition and Status	OK
V&V Charge Time	10.051

### **A.2 Comments**