

V&V Reference Report

L2 ASCDS Version : 7.6.9

Observation 3042 - L2 Version 001
Chandra X-Ray Center

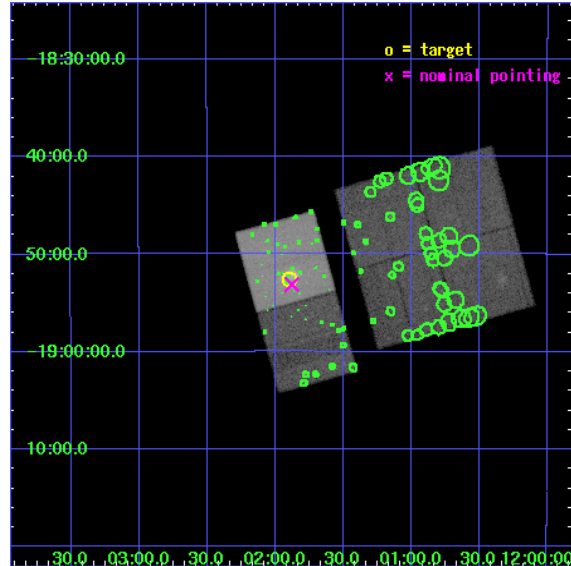
L2 Processing Date : Sep 18 2006

Contents

1	Front	2
2	OBI	3
2.1	OBI	3
2.1.1	Images	3
2.1.2	Bias	3
2.1.3	Parameters	4
2.1.4	Events	4
2.2	Compared Parameters	5
2.3	Aspect	6
2.4	Star Slots	9
2.4.1	Slot 3	9
2.4.2	Slot 4	10
2.4.3	Slot 5	11
2.4.4	Slot 6	12
2.4.5	Slot 7	13
2.5	FID Slots	14
2.5.1	Slot 0	14
2.5.2	Slot 1	15
2.5.3	Slot 2	16
3	Point Sources	17
A	Summary	18
A.1	Status	18
A.2	Comments	18

1 Front

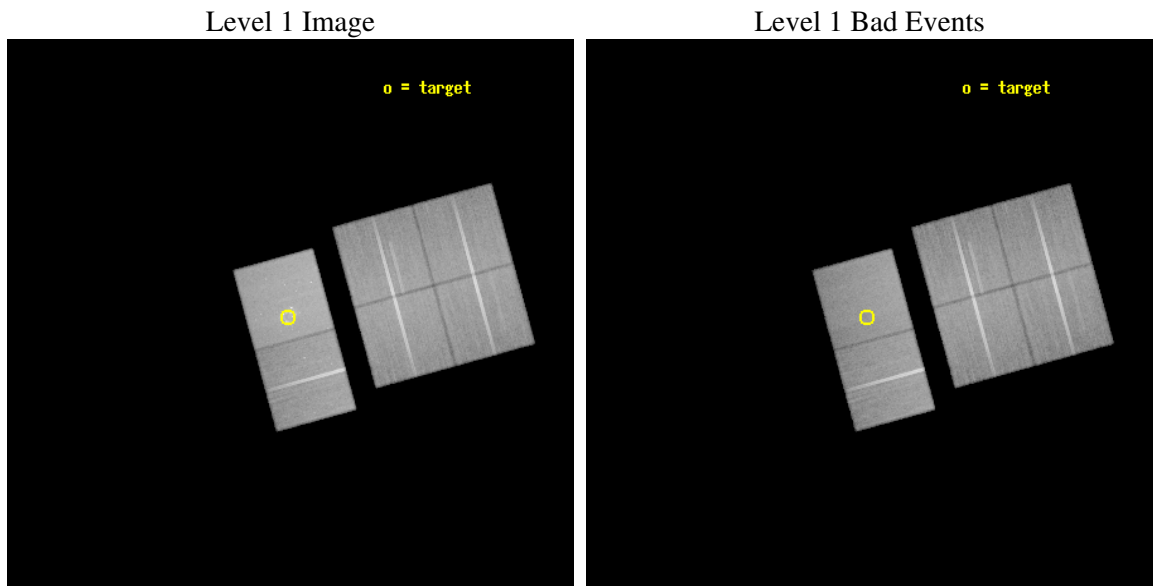
seq_num	700481
obs_id	3042
title	AN IN-DEPTH STUDY OF THE X-RAY SOURCE POPULATION AND HOT ISM OF THE ANTENNAE GALAXIES
observer	Dr Giuseppina Fabbiano
object	NGC 4038/NGC 4039
dtcycle	0
cycle	P
ra_targ	180.47375
dec_targ	-18.876528
ra_nom	180.46932988768
dec_nom	-18.885280684419
roll_nom	254.6248385652
revision	2
ontime	68140.75872609
livetime	67277.919409661
ontime0	68140.75872609
ontime1	68140.75872609
ontime2	68137.517785698
ontime3	68137.517755806
ontime6	68140.75872609
ontime7	68140.75872609
l2events	474048



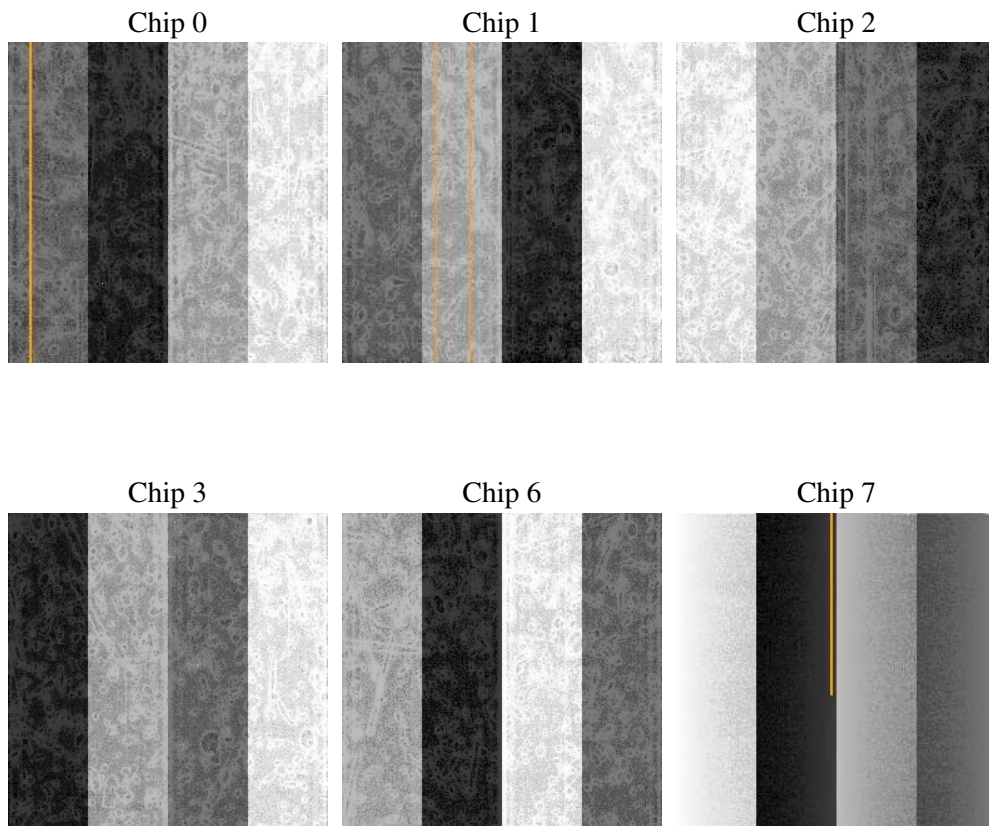
2 OBI

2.1 OBI

2.1.1 Images



2.1.2 Bias



2.1.3 Parameters

obi_num	0
ascdsver	7.6.9
caldsver	3.2.3
date	2006-09-18T02:45:23
revision	2

sched_exp_time	68000.000000
ontime	70112.619352311
ontime0	69999.182932377
ontime1	70008.906052381
ontime2	69999.183032006
ontime3	70008.906122118
ontime6	70008.906052381
ontime7	70112.619352311
l1events	2817462

2.1.4 Events

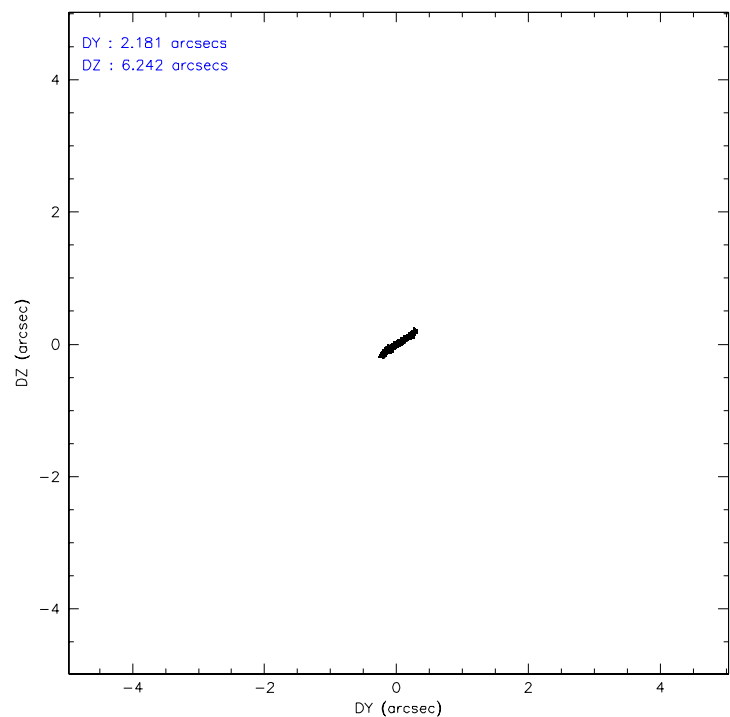
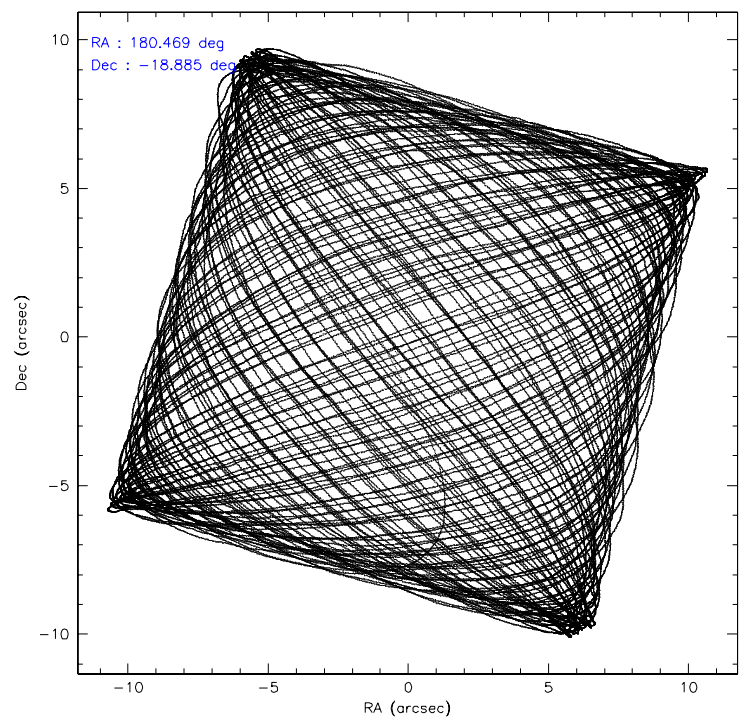
	ccd 0	ccd 1	ccd 2	ccd 3	ccd 6	ccd 7
level 1 events	433444	415776	449227	443991	462392	612632
rejected events	377897	359036	396459	390420	406723	370097
rejected %	87%	86%	88%	87%	87%	60%

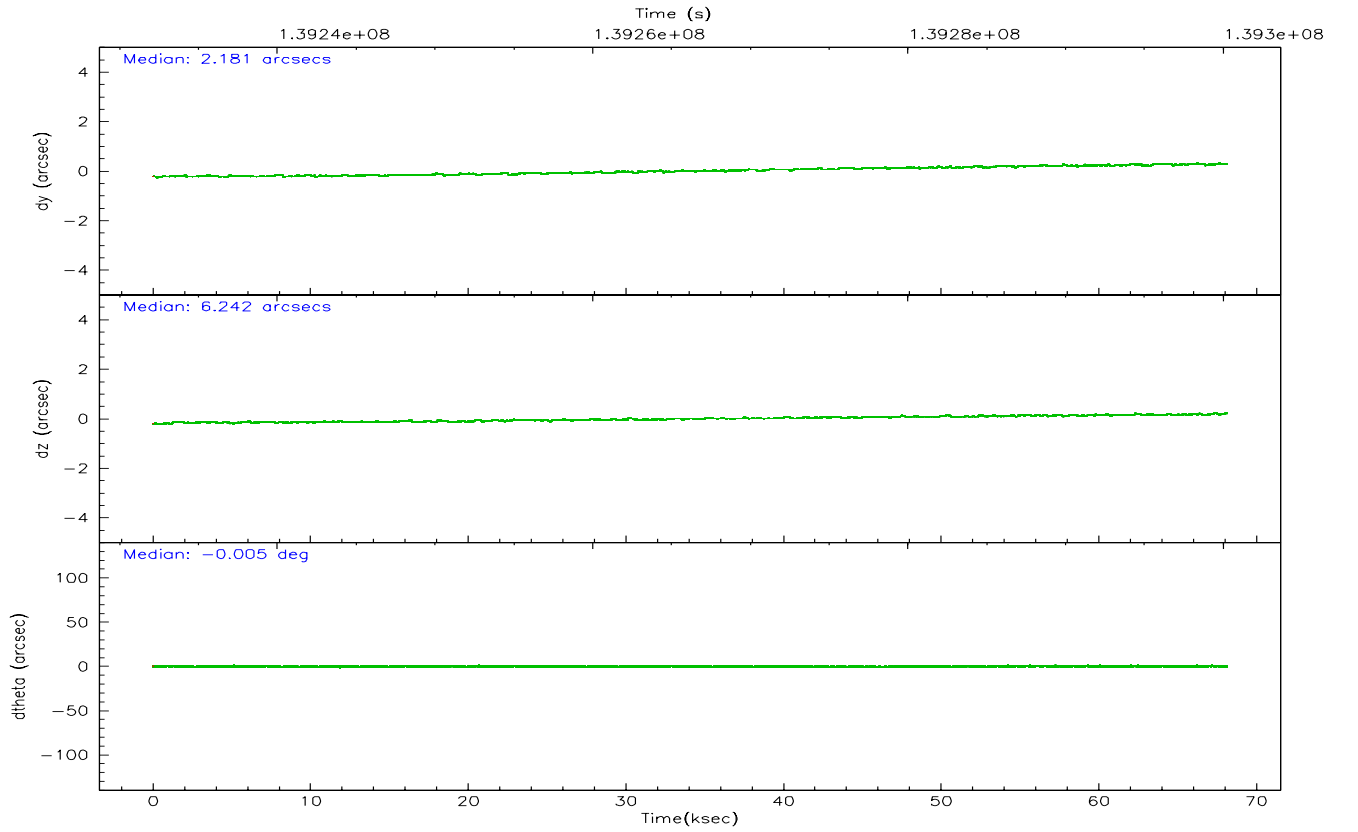
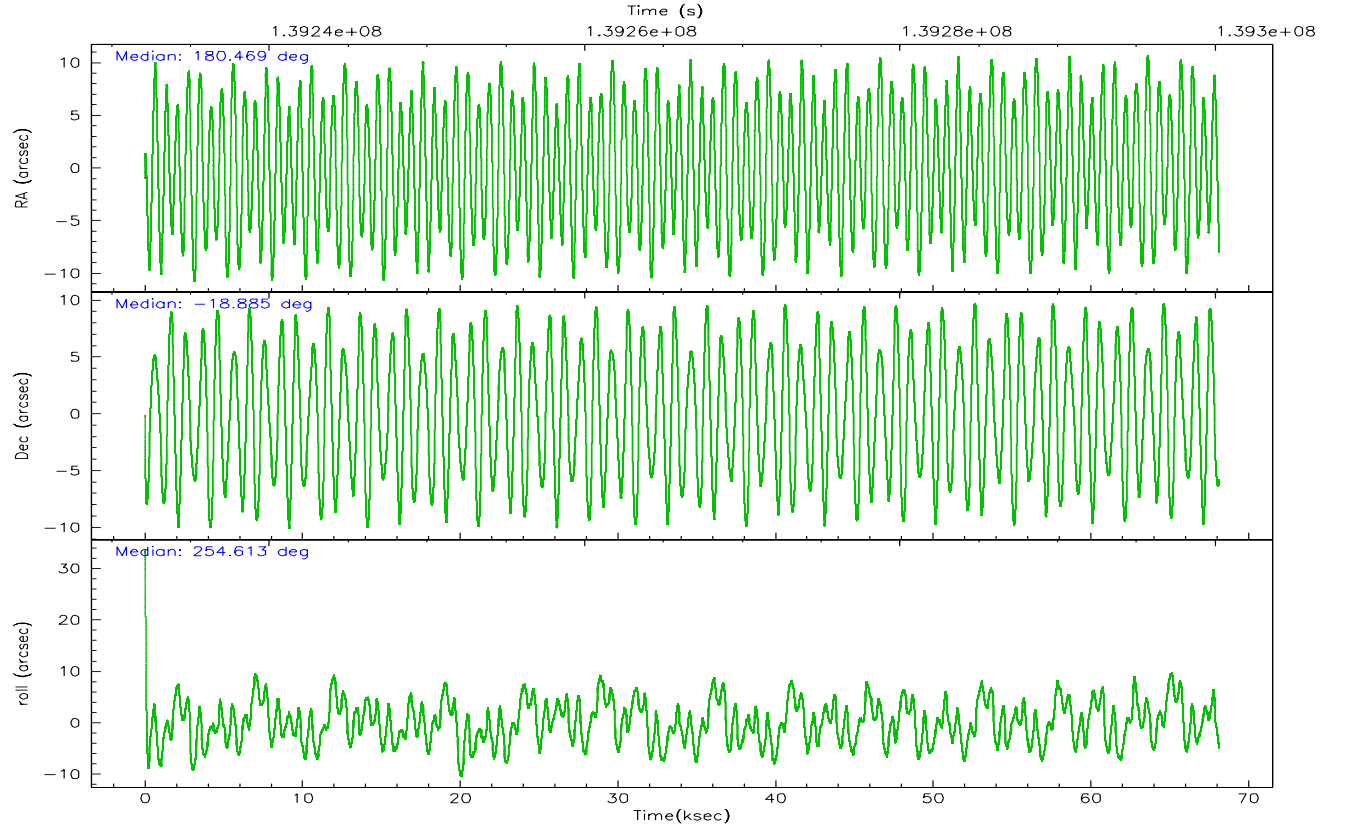
	ccd 0	ccd 1	ccd 2	ccd 3	ccd 6	ccd 7
grade 0 events	23616	23054	22671	23096	23289	21252
	5%	5%	5%	5%	5%	3%
grade 1 events	213	226	197	232	200	376
	0%	0%	0%	0%	0%	0%
grade 2 events	12881	12939	12111	11825	12409	61982
	2%	3%	2%	2%	2%	10%
grade 3 events	5189	5597	4725	4901	5249	14337
	1%	1%	1%	1%	1%	2%
grade 4 events	4887	5424	4832	5028	5114	13960
	1%	1%	1%	1%	1%	2%
grade 5 events	17225	17816	15554	17812	19558	39345
	3%	4%	3%	4%	4%	6%
grade 6 events	10377	11099	9729	10105	10983	137276
	2%	2%	2%	2%	2%	22%
grade 7 events	359056	339621	379408	370992	385590	324104
	82%	81%	84%	83%	83%	52%

2.2 Compared Parameters

Parameter	Planned	Actual	Parameter	Planned	Actual
Instrument	ACIS	ACIS	Obspar format version number	6	6
Detector	ACIS-012367	ACIS-012367	Obspar file type	PREDICTED	ACTUAL
Grating	NONE	NONE	Obspar update status	NONE	UPDATED
Data mode	FAINT	FAINT	Number of optional ACIS chips dropped	0	0
Observation mode	POINTING	POINTING	On-chip summing requested	N	N
Pointing RA	180.461712	180.4693298876779	Subarray requested	NONE	NONE
Pointing Dec	-18.859009	-18.88528068441876	Alternating exposures requested	N	N
Pointing Roll	254.465739	254.624838565199	Primary exposure time	0.000000	3.2
SIM focus pos (mm)	-0.684267	-0.6828225247311905			
SIM defocus (mm)	0	0.001444936568705701			
SIM translation stage pos (mm)	-190.132523	-190.1400660498719			
SIM translation stage offset (mm)	0	0.00754346686406393			
Observation start time	139232265.184000	139230146.65099			
Observation start date	2002-05-31T11:36:41	2002-05-31T11:02:26			
Observation end time	139300265.184000	139300918.80388			
Observation end date	2002-06-01T06:30:01	2002-06-01T06:41:58			
Read mode	TIMED	TIMED			

2.3 Aspect



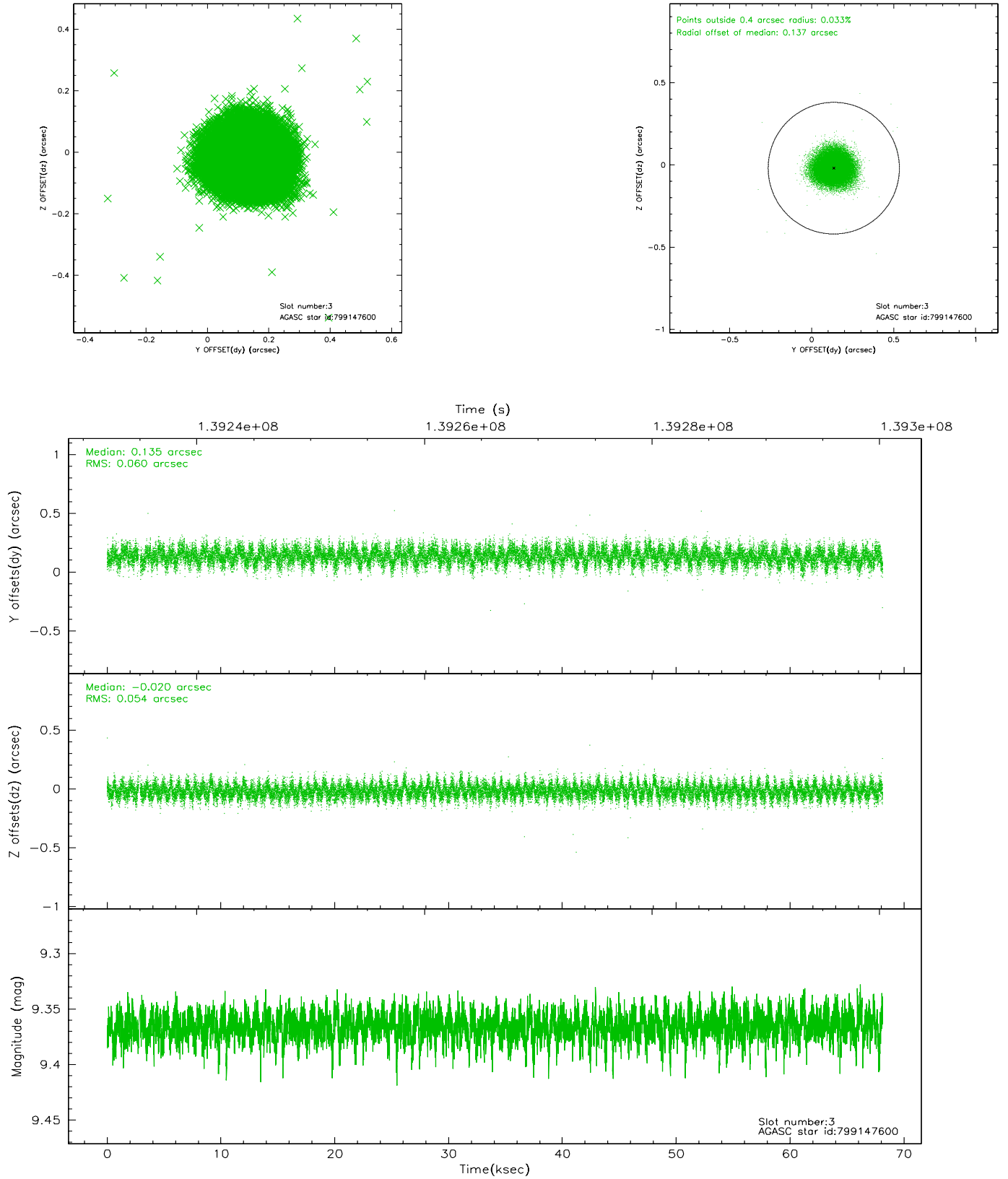


Slot Statistics

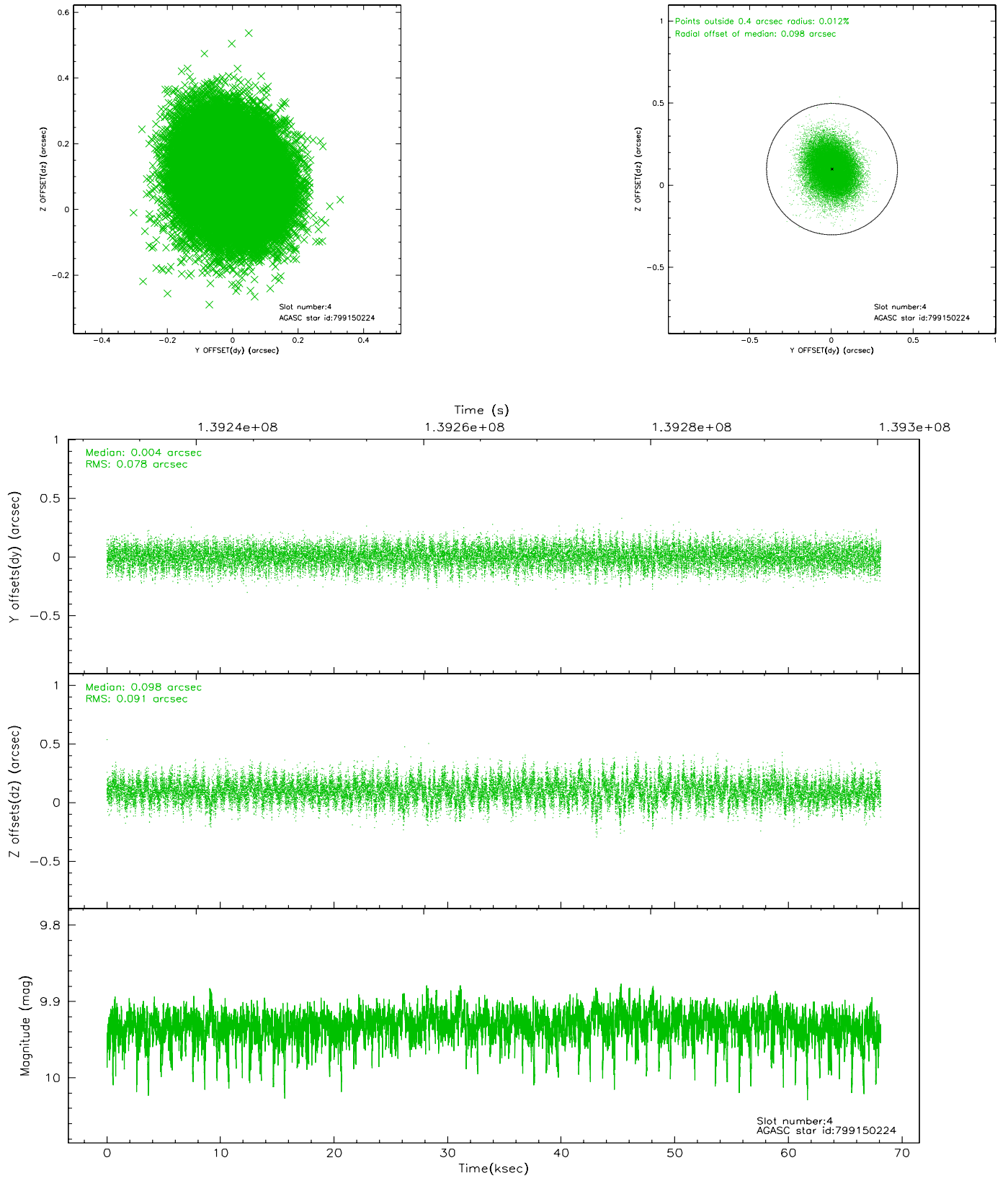
slot	status	id	mag	n_pts	med_dy	med_dz	dr1	dr2	ra	dec	mean_y	mean_z
0	FID	ACIS-S-2	7.11	16617	-0.005	0.004	0.009	0.035	0.000000	0.000000	-754.79	-1727.39
1	FID	ACIS-S-4	7.20	16618	-0.028	0.007	0.009	0.022	0.000000	0.000000	2158.46	181.19
2	FID	ACIS-S-6	7.36	16620	0.003	-0.005	0.010	0.016	0.000000	0.000000	407.09	818.48
3	GUIDE	799147600	9.37	33143	0.135	-0.020	0.087	0.137	180.387500	-19.402329	1953.05	281.78
4	GUIDE	799150224	9.93	33213	0.004	0.098	0.128	0.207	181.019441	-19.129543	433.52	2090.04
5	GUIDE	799149552	9.63	33215	-0.033	-0.081	0.107	0.171	179.918855	-18.889841	605.88	-1750.35
6	GUIDE	799154984	10.30	33206	-0.051	0.060	0.146	0.232	181.106277	-19.165154	479.02	2408.52
7	GUIDE	799152736	9.10	33231	-0.054	-0.055	0.103	0.166	180.259335	-18.516494	-1001.79	-995.38

2.4 Star Slots

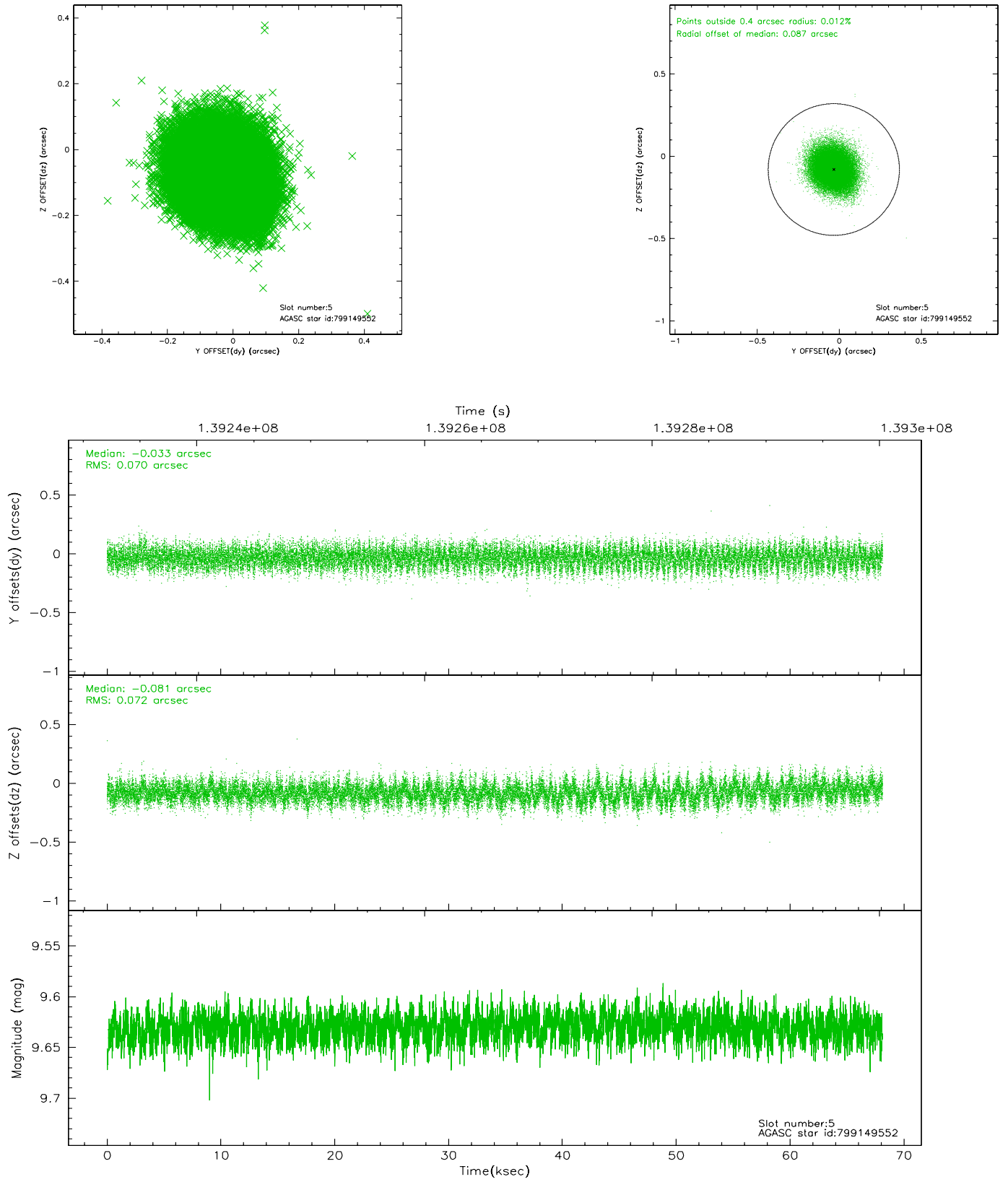
2.4.1 Slot 3



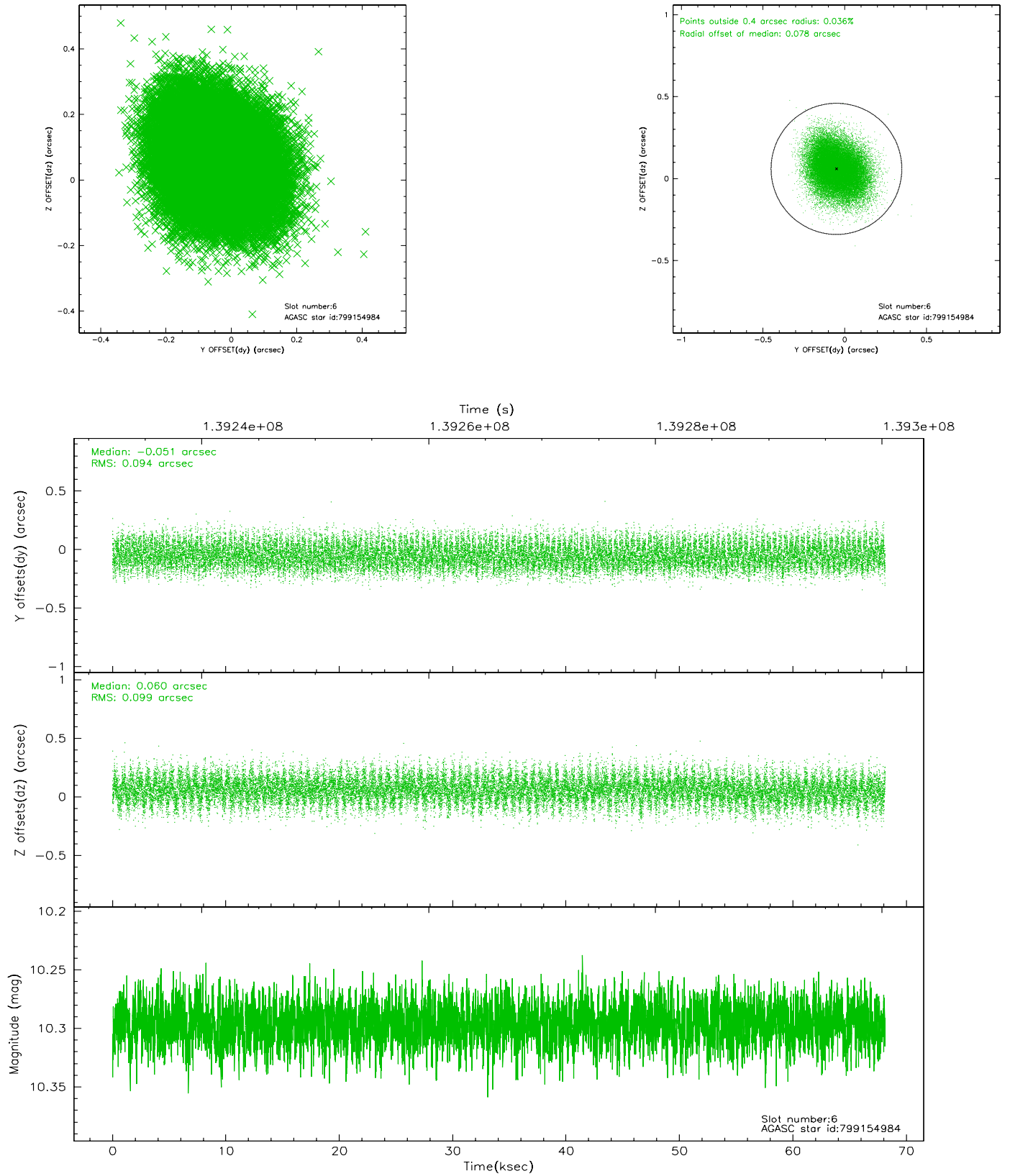
2.4.2 Slot 4



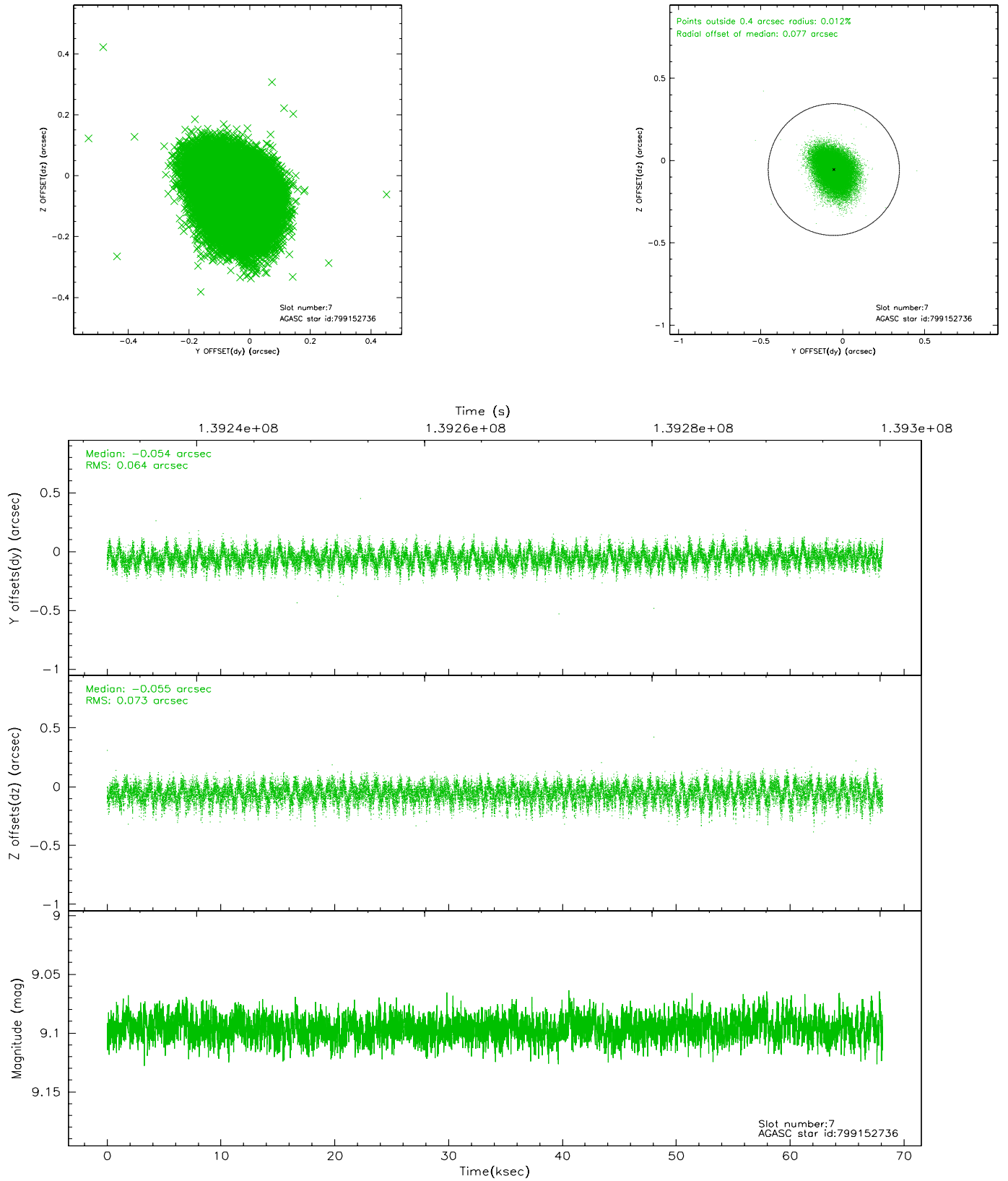
2.4.3 Slot 5



2.4.4 Slot 6

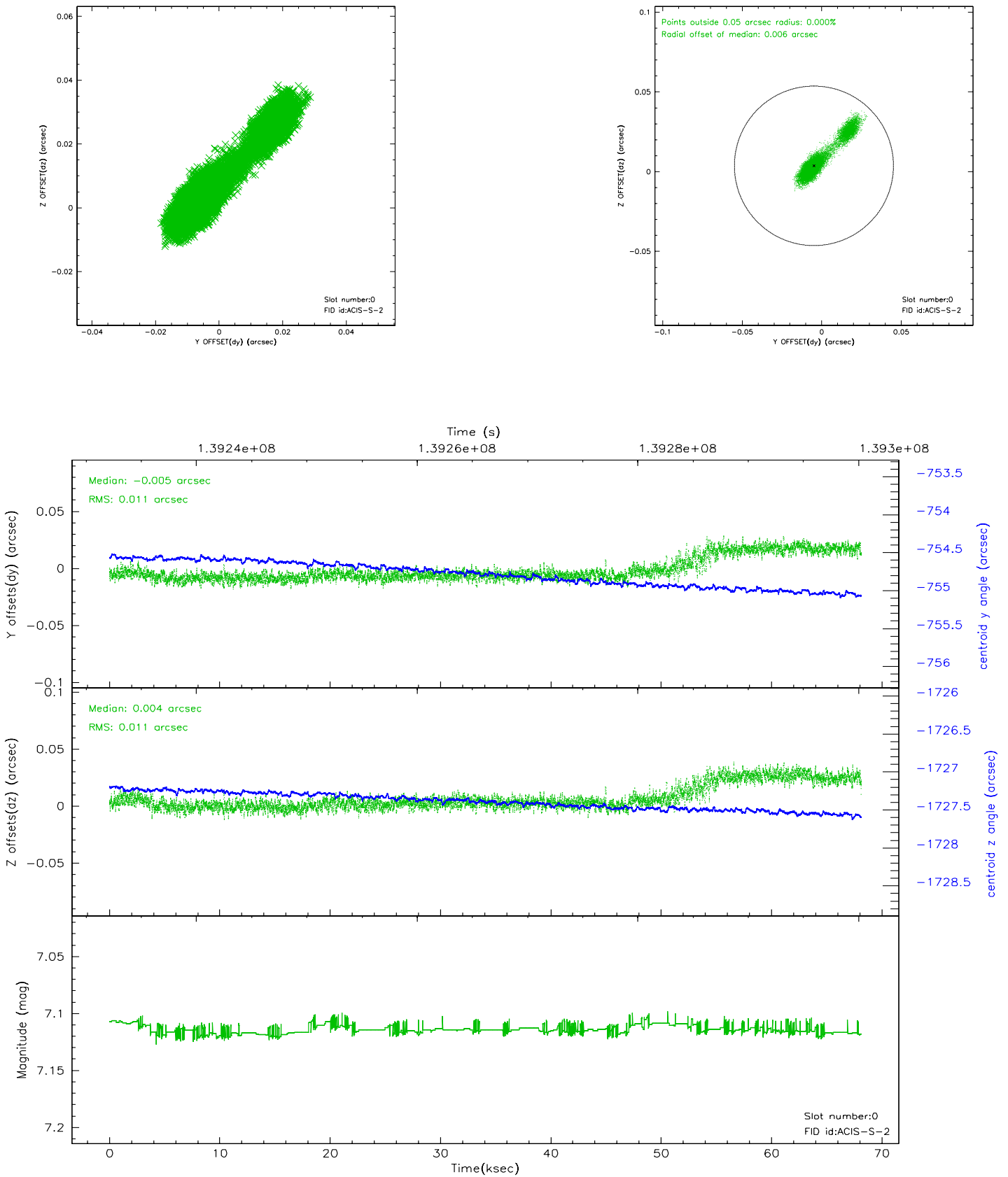


2.4.5 Slot 7

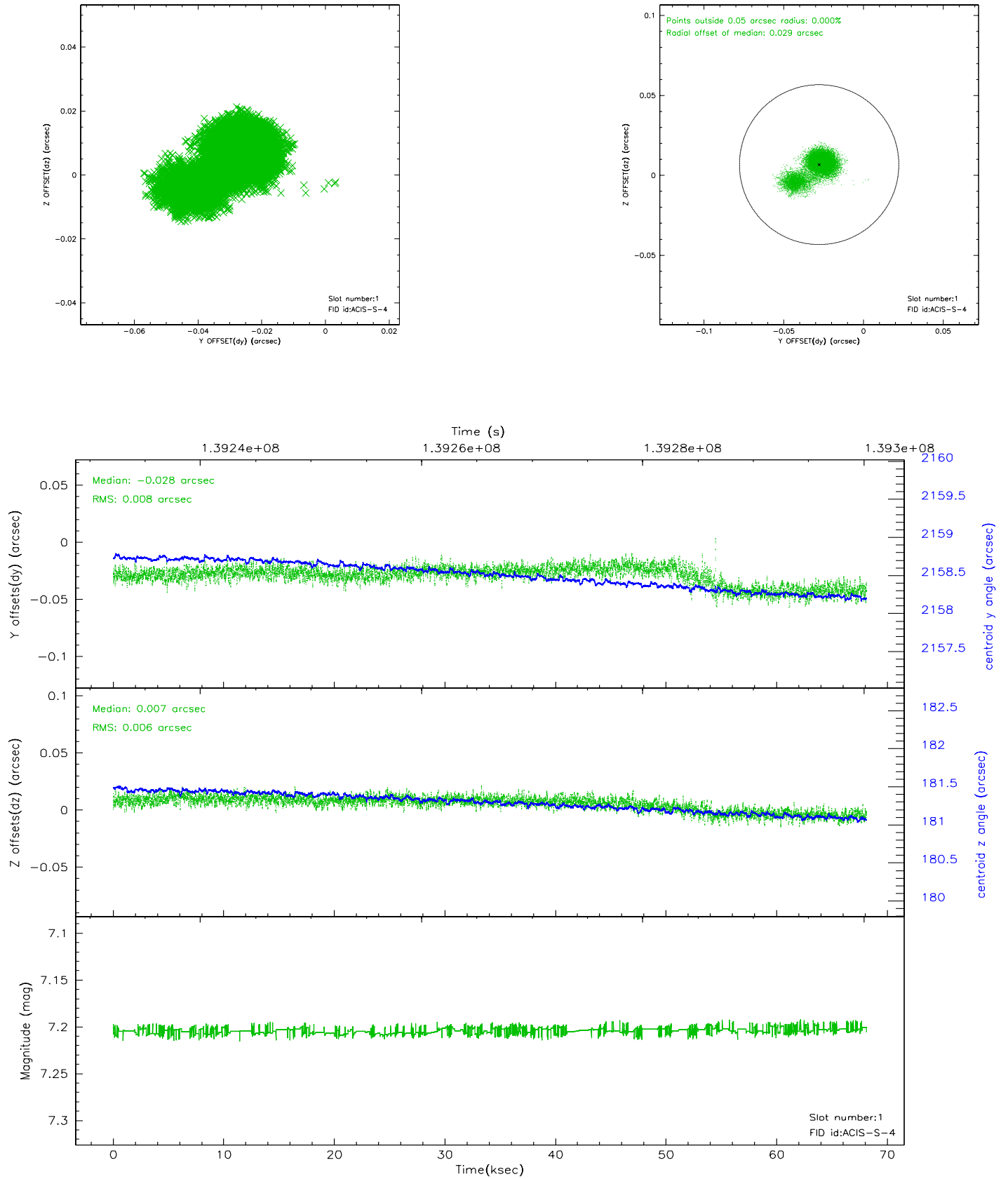


2.5 FID Slots

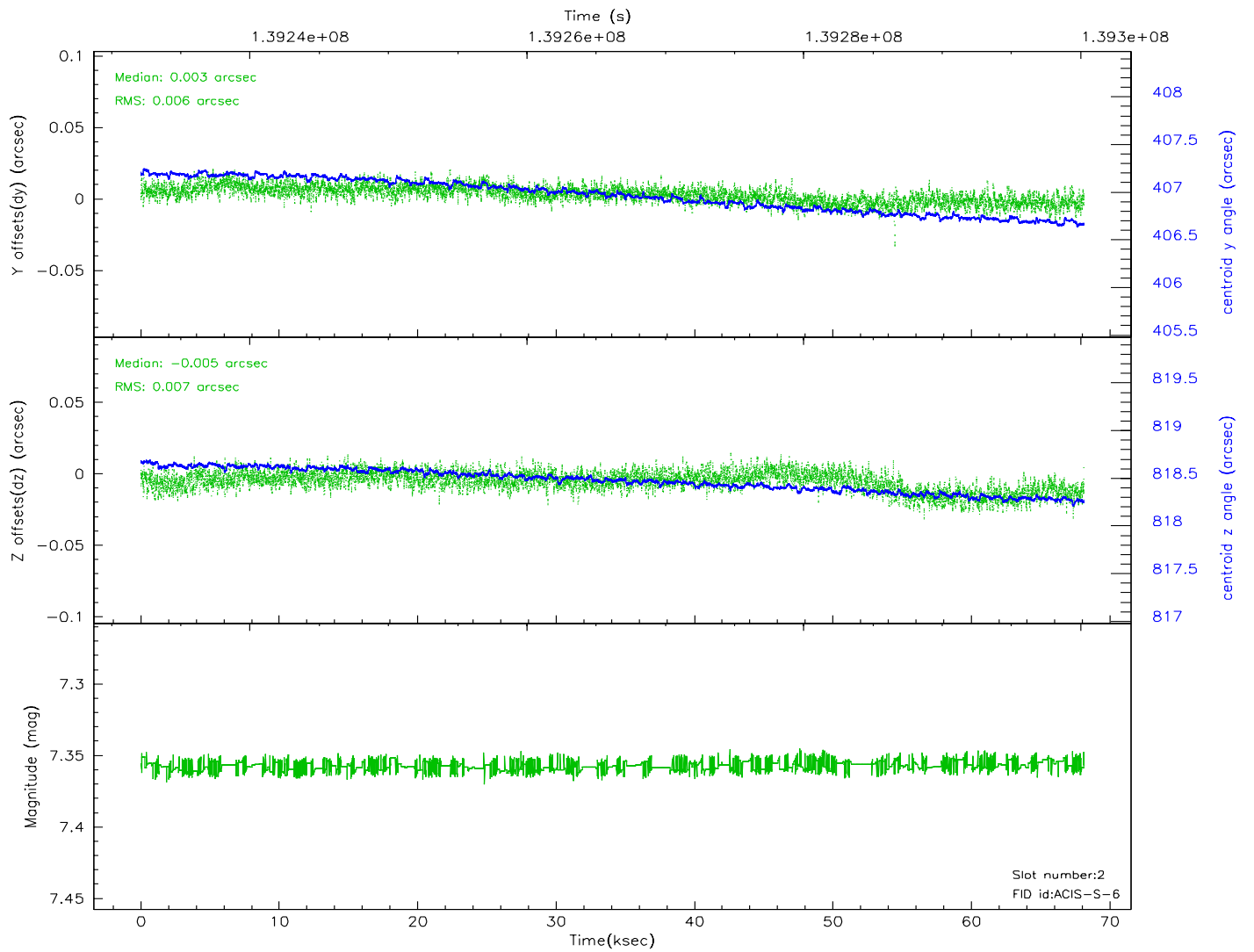
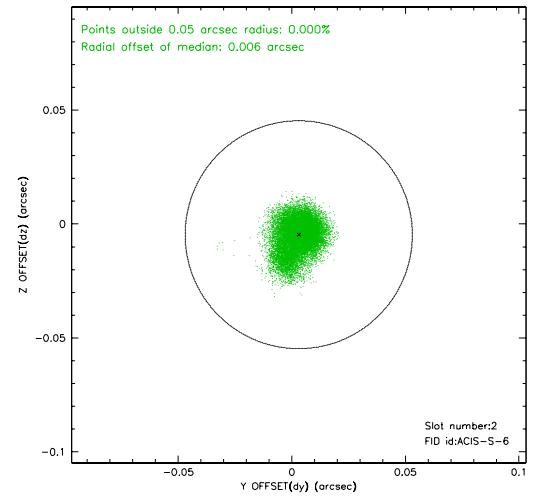
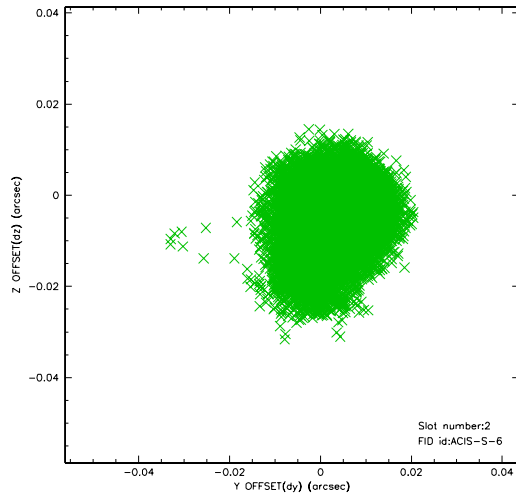
2.5.1 Slot 0



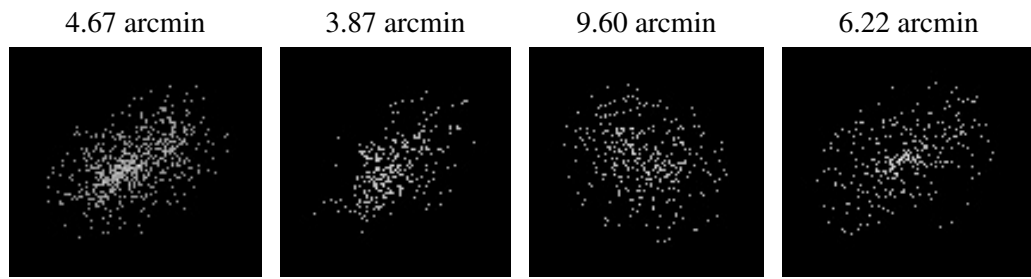
2.5.2 Slot 1



2.5.3 Slot 2



3 Point Sources



A Summary

A.1 Status

V&V Scientist	Jen Lauer
V&V Date (YYYY-MM-DD)	2006.09.18
V&V Edition	1
V&V Disposition and Status	OK
V&V Charge Time	68.14

A.2 Comments