

# V&V Reference Report

## L2 ASCDS Version : 7.6.8.1

Observation 2952 - L2 Version 001  
Chandra X-Ray Center

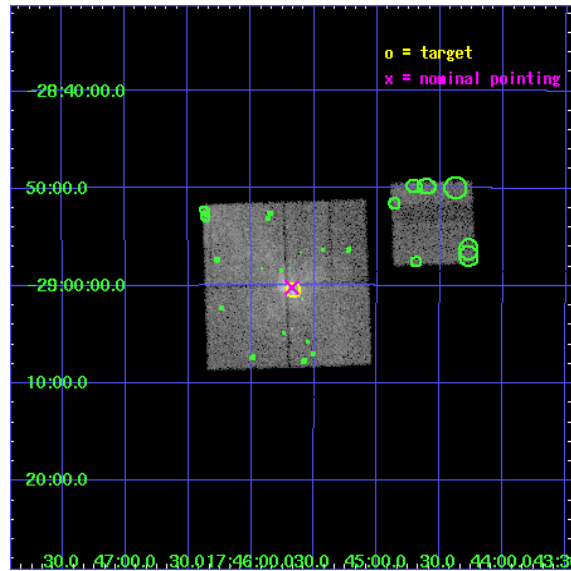
L2 Processing Date : Sep 8 2006

## Contents

<b>1</b>	<b>Front</b>	<b>2</b>
<b>2</b>	<b>OBI</b>	<b>3</b>
2.1	OBI . . . . .	3
2.1.1	Images . . . . .	3
2.1.2	Bias . . . . .	3
2.1.3	Parameters . . . . .	4
2.1.4	Events . . . . .	4
2.2	Compared Parameters . . . . .	5
2.3	Aspect . . . . .	6
2.4	Star Slots . . . . .	9
2.4.1	Slot 3 . . . . .	9
2.4.2	Slot 4 . . . . .	10
2.4.3	Slot 5 . . . . .	11
2.4.4	Slot 6 . . . . .	12
2.4.5	Slot 7 . . . . .	13
2.5	FID Slots . . . . .	14
2.5.1	Slot 0 . . . . .	14
2.5.2	Slot 1 . . . . .	15
2.5.3	Slot 2 . . . . .	16
<b>3</b>	<b>Point Sources</b>	<b>17</b>
<b>A</b>	<b>Summary</b>	<b>18</b>
A.1	Status . . . . .	18
A.2	Comments . . . . .	18

# 1 Front

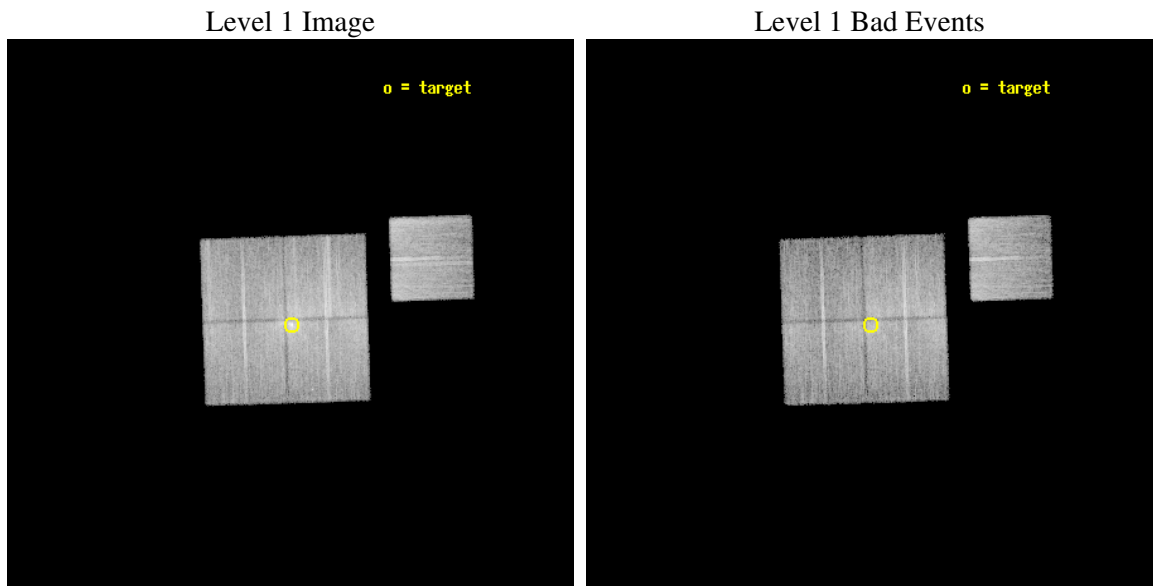
seq_num	600289
obs_id	2952
title	SIMULTANEOUS X-RAY/RADIO MONITORING OF SAGITTARIUS A*
observer	Professor Gordon Garmire
object	SGR A*
dtcycle	0
cycle	P
ra_targ	266.416667
dec_targ	-29.007778
ra_nom	266.41891240665
dec_nom	-29.003533579716
roll_nom	88.16807127701
revision	2
ontime	12012.499976903
livetime	11855.547821231
ontime0	12012.499976903
ontime1	12012.499976903
ontime2	12012.499976903
ontime3	12012.499976903
ontime6	12009.359016642
l2events	113030



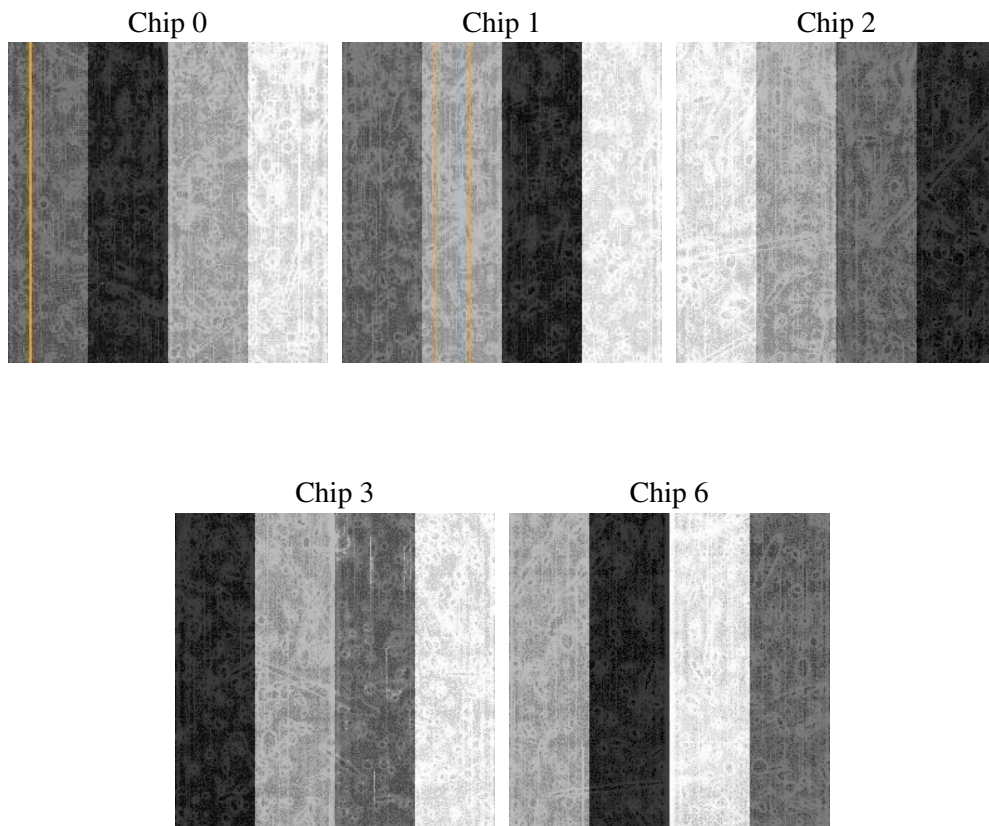
## 2 OBI

### 2.1 OBI

#### 2.1.1 Images



#### 2.1.2 Bias



### 2.1.3 Parameters

obi_num	1
ascdsver	7.6.8.1
caldbver	3.2.3
date	2006-09-08T08:54:55
revision	2

sched_exp_time	11900.000000
ontime	12017.473667011
ontime0	12017.473667011
ontime1	12017.473667011
ontime2	12017.473667011
ontime3	12017.473667011
ontime6	12014.332706749
llevents	721778

### 2.1.4 Events

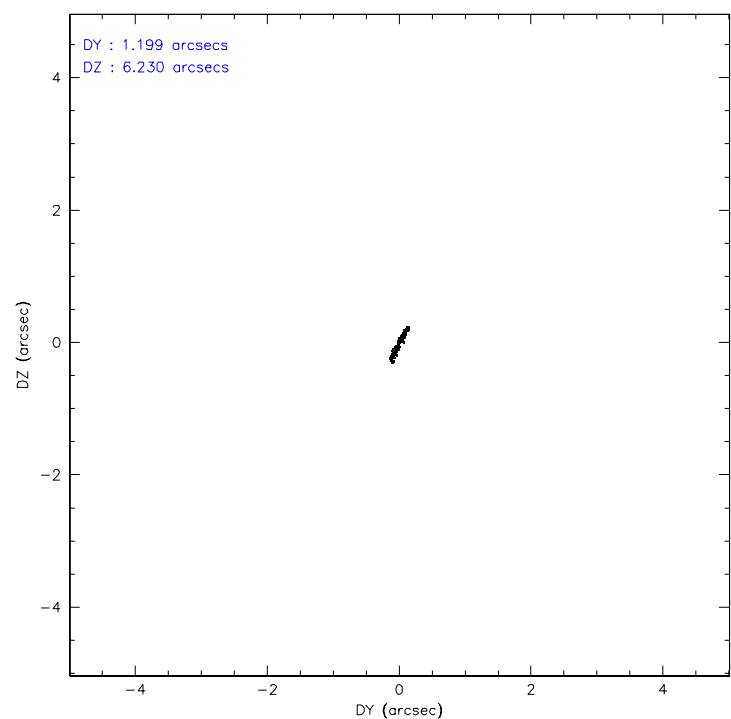
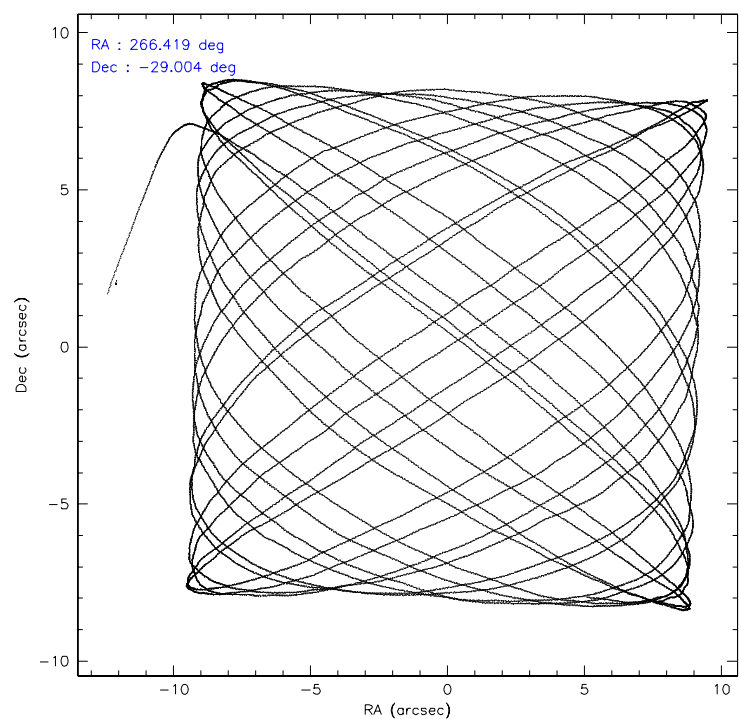
	ccd 0	ccd 1	ccd 2	ccd 3	ccd 6
level 1 events	130191	133064	160958	150216	147349
rejected events	92333	105603	128370	122381	126384
rejected %	70%	79%	79%	81%	85%

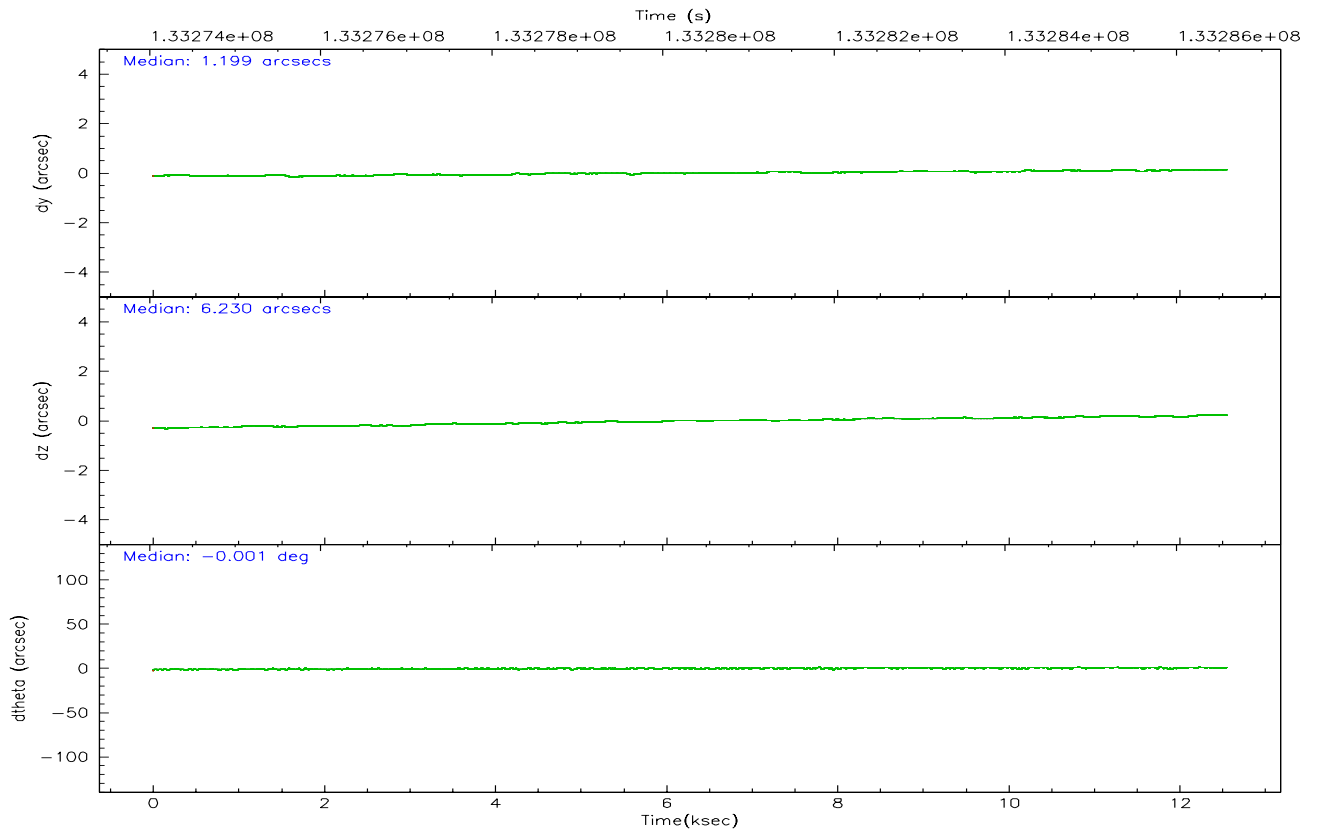
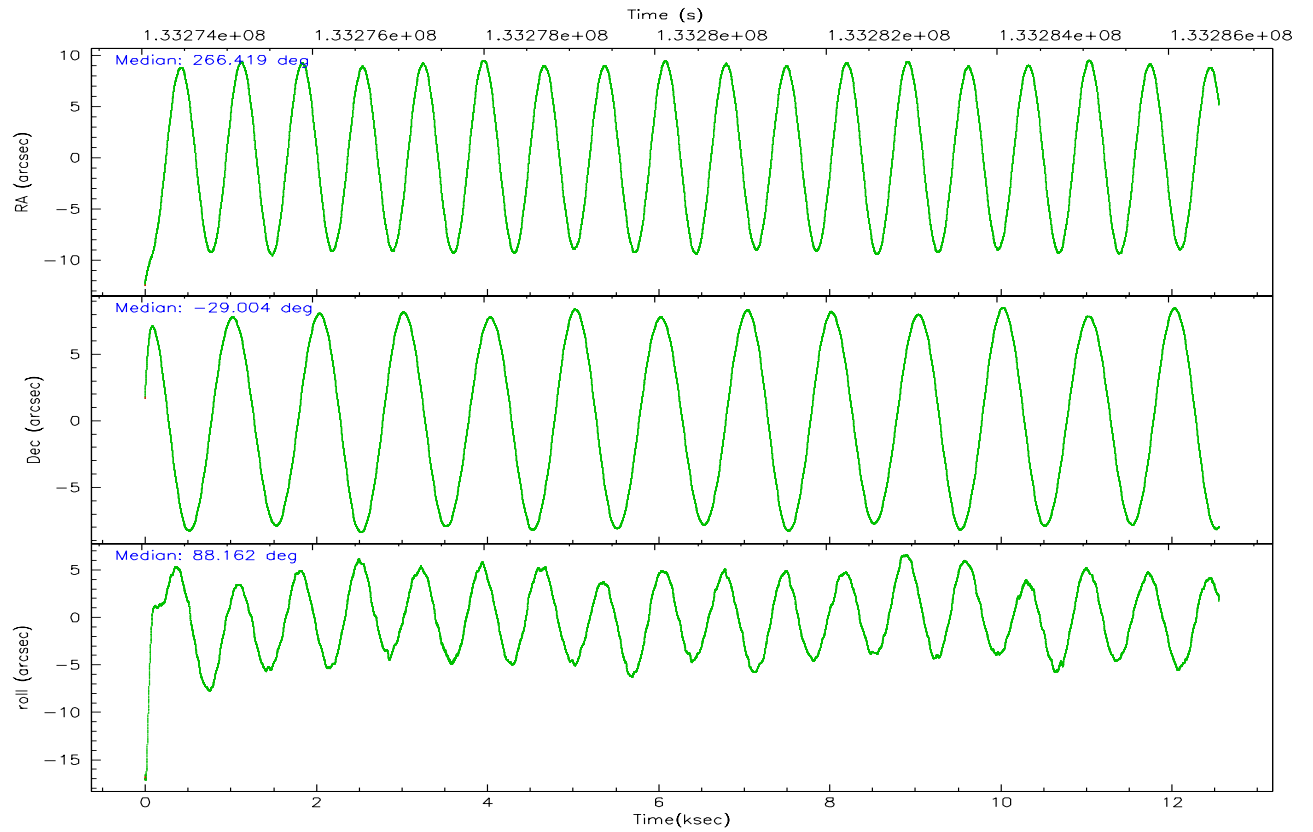
	ccd 0	ccd 1	ccd 2	ccd 3	ccd 6
grade 0 events	20080	13348	15888	13701	8733
	15%	10%	9%	9%	5%
grade 1 events	129	105	111	100	69
	0%	0%	0%	0%	0%
grade 2 events	9755	6826	9264	6551	7007
	7%	5%	5%	4%	4%
grade 3 events	1765	1489	1247	1448	998
	1%	1%	0%	0%	0%
grade 4 events	1753	1463	2008	1546	972
	1%	1%	1%	1%	0%
grade 5 events	2835	2980	2921	2988	3215
	2%	2%	1%	1%	2%
grade 6 events	4526	4352	4196	4606	3268
	3%	3%	2%	3%	2%
grade 7 events	89348	102501	125323	119276	123087
	68%	77%	77%	79%	83%

## 2.2 Compared Parameters

Parameter	Planned	Actual	Parameter	Planned	Actual
Instrument	ACIS	ACIS	Obspar format version number	6	6
Detector	ACIS-01236	ACIS-01236	Obspar file type	PREDICTED	ACTUAL
Grating	NONE	NONE	Obspar update status	NONE	UPDATED
Data mode	FAINT	FAINT	On-chip summing requested	N	N
Observation mode	POINTING	POINTING	Subarray requested	NONE	NONE
Pointing RA	266.433783	266.418912406648	Alternating exposures requested	N	N
Pointing Dec	-29.027663	-29.00353357971603	Primary exposure time	0.000000	3.1
Pointing Roll	87.966620	88.16807127700997			
Window start time	133274224.184000	133274224.184000			
Window stop time	133286824.184000	133286824.184000			
SIM focus pos (mm)	-0.782348	-0.7809083437167272			
SIM defocus (mm)	0	0.001439871863259334			
SIM translation stage pos (mm)	-233.592463	-233.5874344608287			
SIM translation stage offset (mm)	0	-0.005018542100998502			
Observation start time	133274692.184000	133273504.45853			
Observation start date	2002-03-23T12:43:48	2002-03-23T12:25:04			
Observation end time	133286592.184000	133287140.03409			
Observation end date	2002-03-23T16:02:08	2002-03-23T16:12:20			
Read mode	TIMED	TIMED			

### 2.3 Aspect





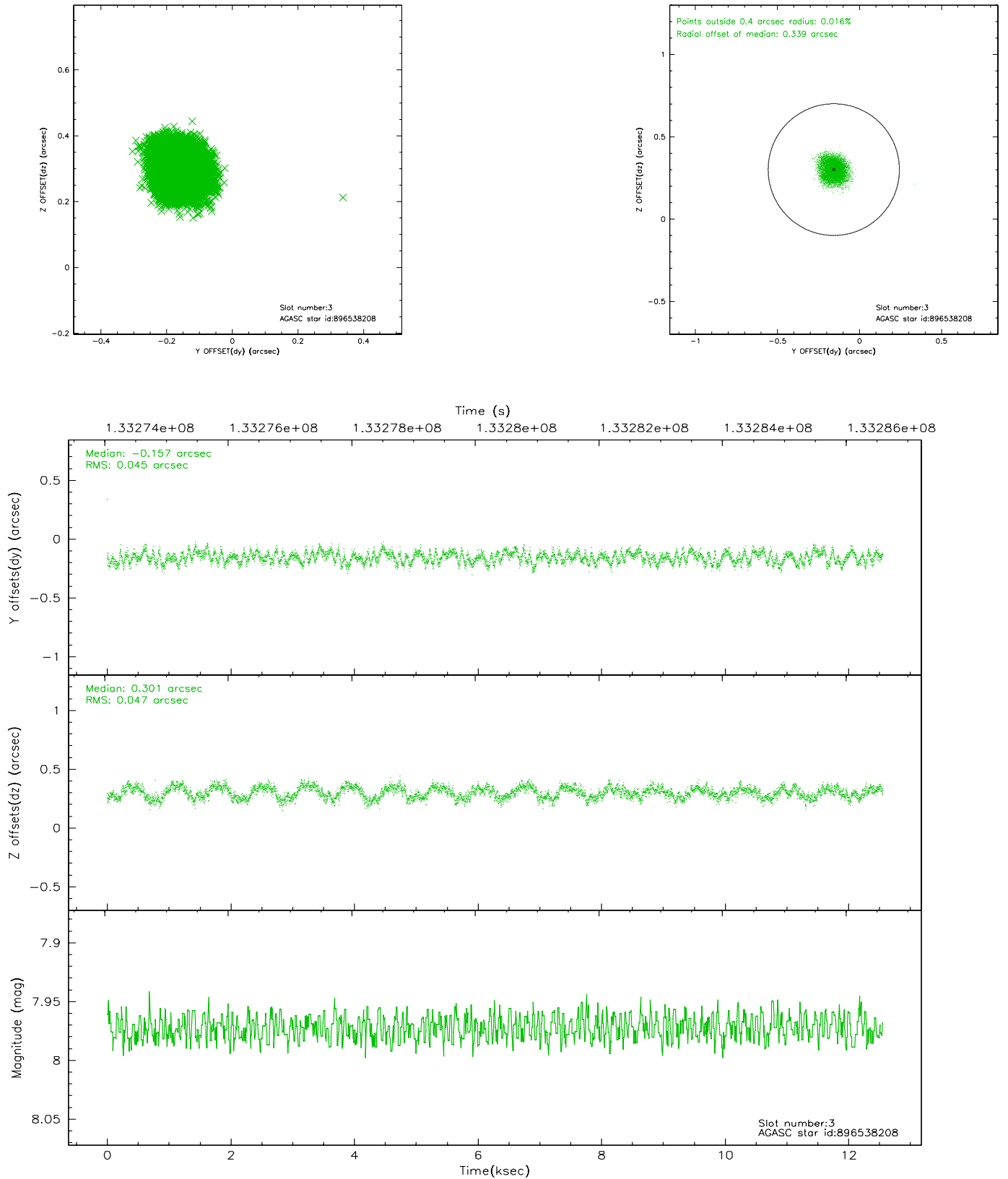
### Slot Statistics

slot	status	id	mag	n_pts	med_dy	med_dz	dr1	dr2	ra	dec	mean_y	mean_z
0	FID	ACIS-I-1	7.25	3063	-0.030	0.040	0.006	0.011	0.000000	0.000000	938.60	-829.56
1	FID	ACIS-I-5	7.24	3062	-0.027	0.030	0.007	0.011	0.000000	0.000000	-1809.25	1067.78
2	FID	ACIS-I-6	7.26	3062	-0.034	0.001	0.008	0.012	0.000000	0.000000	403.76	1712.66
3	GUIDE	896538208	7.97	6123	-0.157	0.301	0.070	0.105	267.176969	-28.671626	1357.81	-2300.71
4	GUIDE	896537776	7.52	6124	0.345	0.092	0.063	0.103	266.655684	-29.665673	-2269.97	-776.18
5	GUIDE	896540808	7.49	6124	0.135	-0.280	0.056	0.088	265.985401	-29.308604	-1062.95	1369.79
6	GUIDE	896535464	9.31	6121	-0.155	0.209	0.186	0.275	266.962550	-28.408631	2283.49	-1594.16
7	GUIDE	896544560	9.03	6121	-0.160	-0.319	0.071	0.117	265.902975	-28.371895	2296.77	1763.30

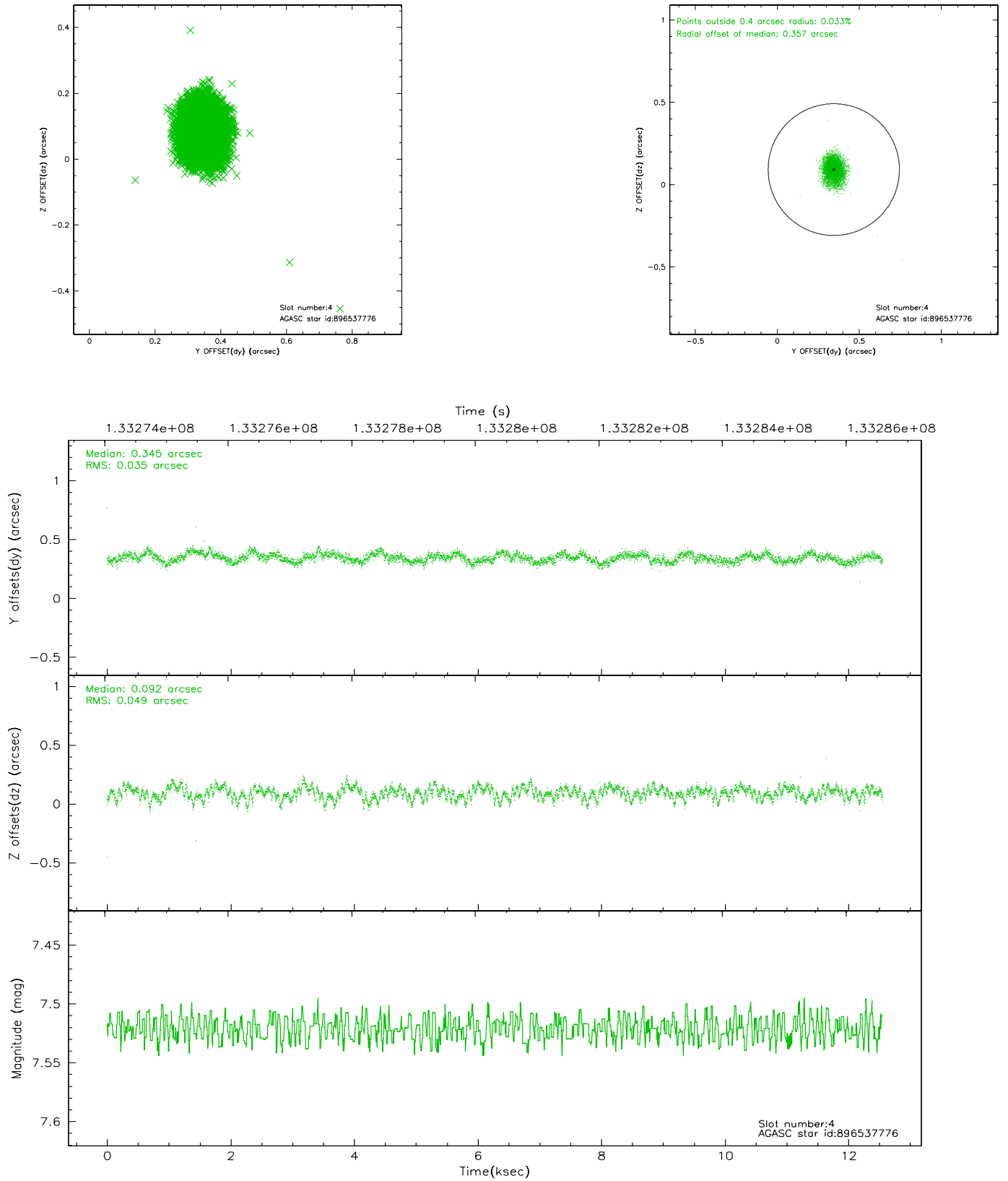


## 2.4 Star Slots

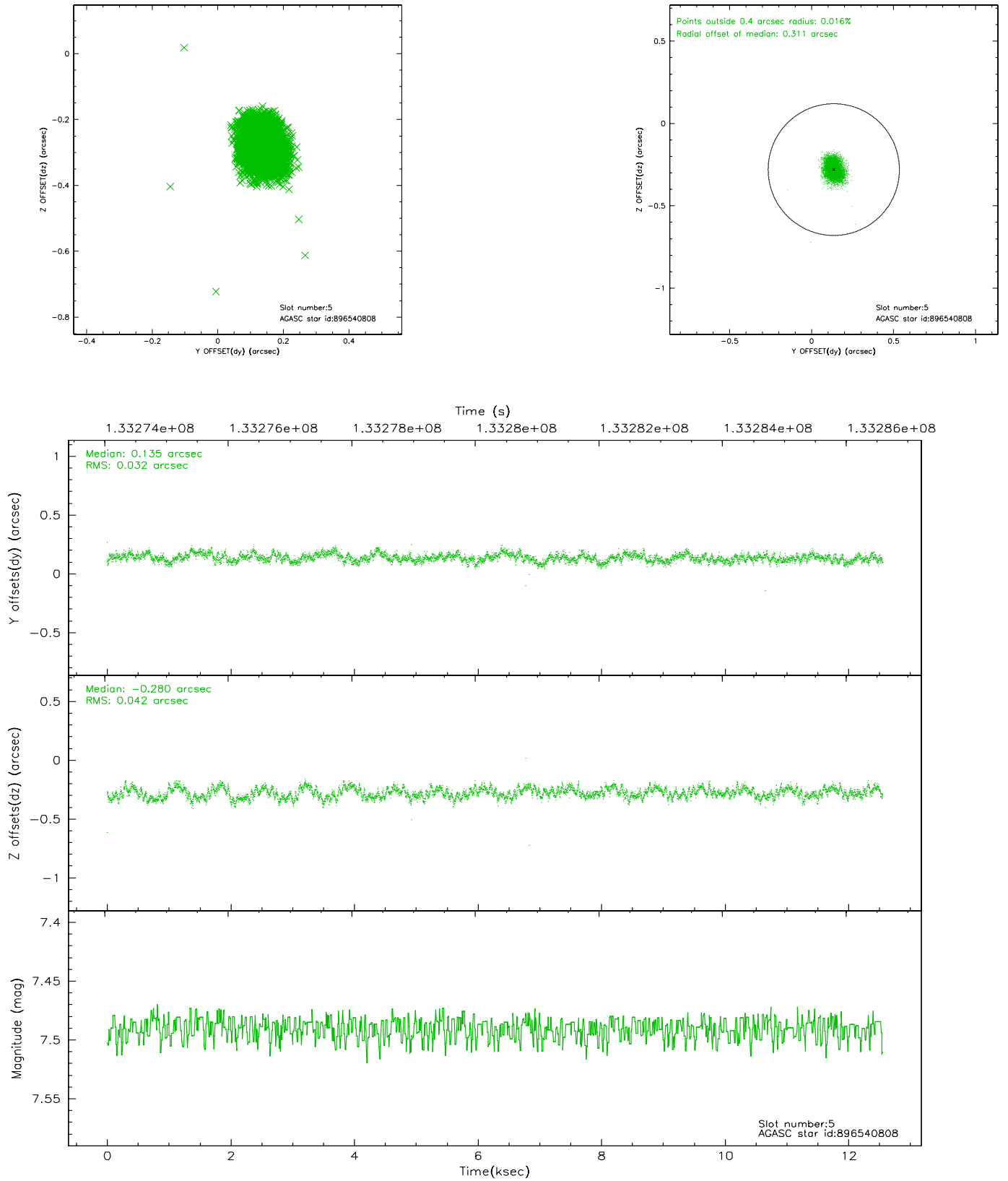
### 2.4.1 Slot 3



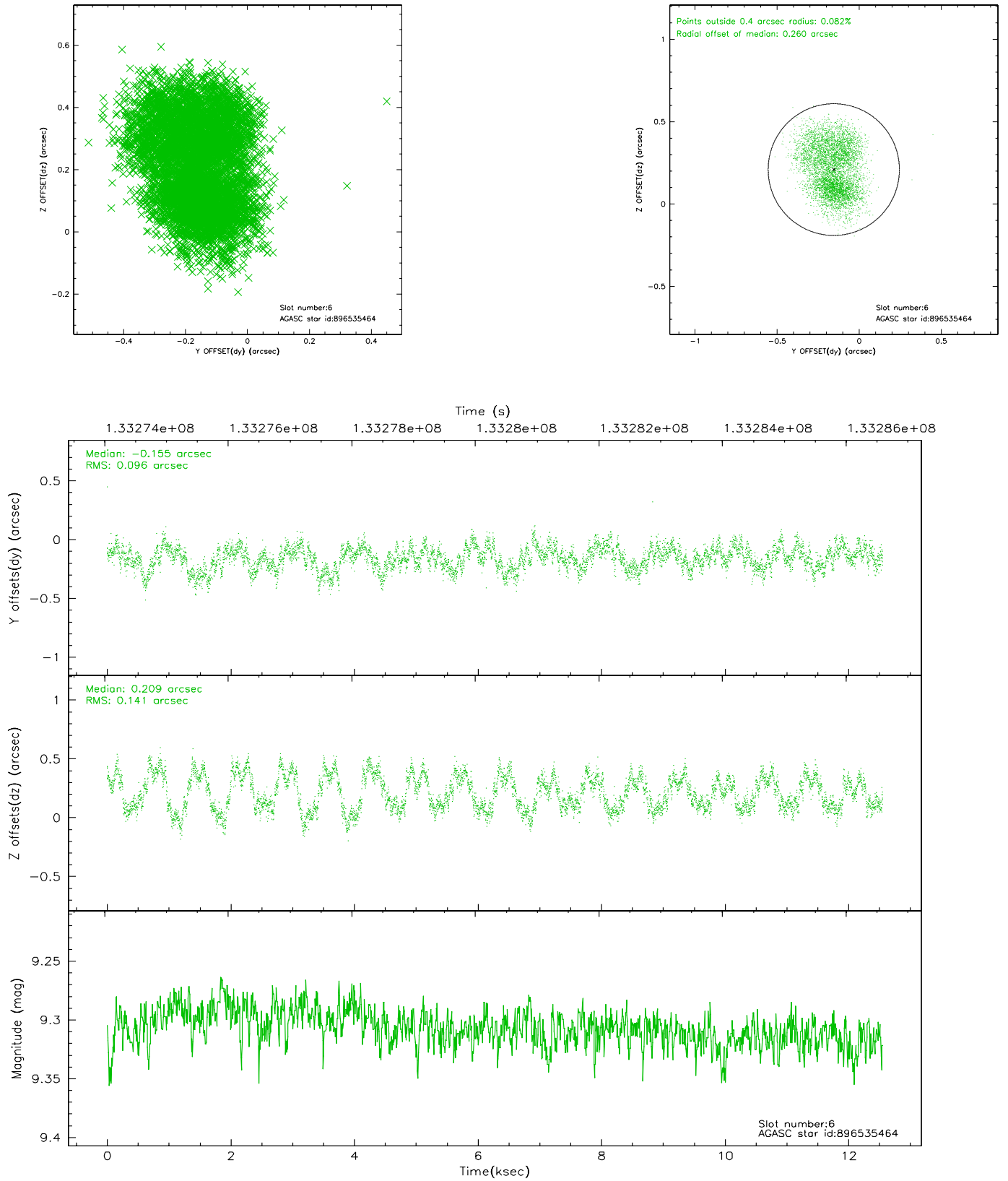
## 2.4.2 Slot 4



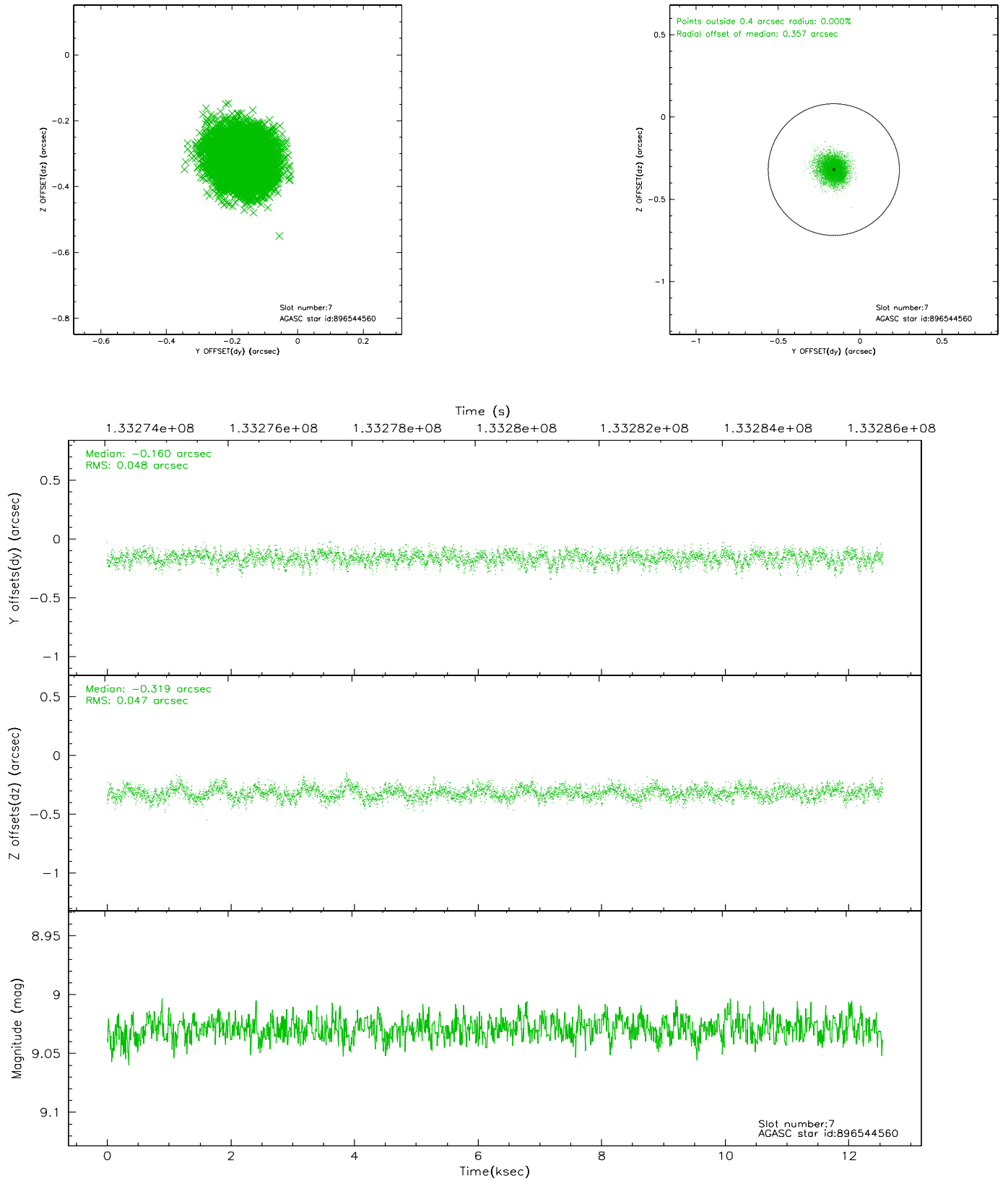
### 2.4.3 Slot 5



## 2.4.4 Slot 6

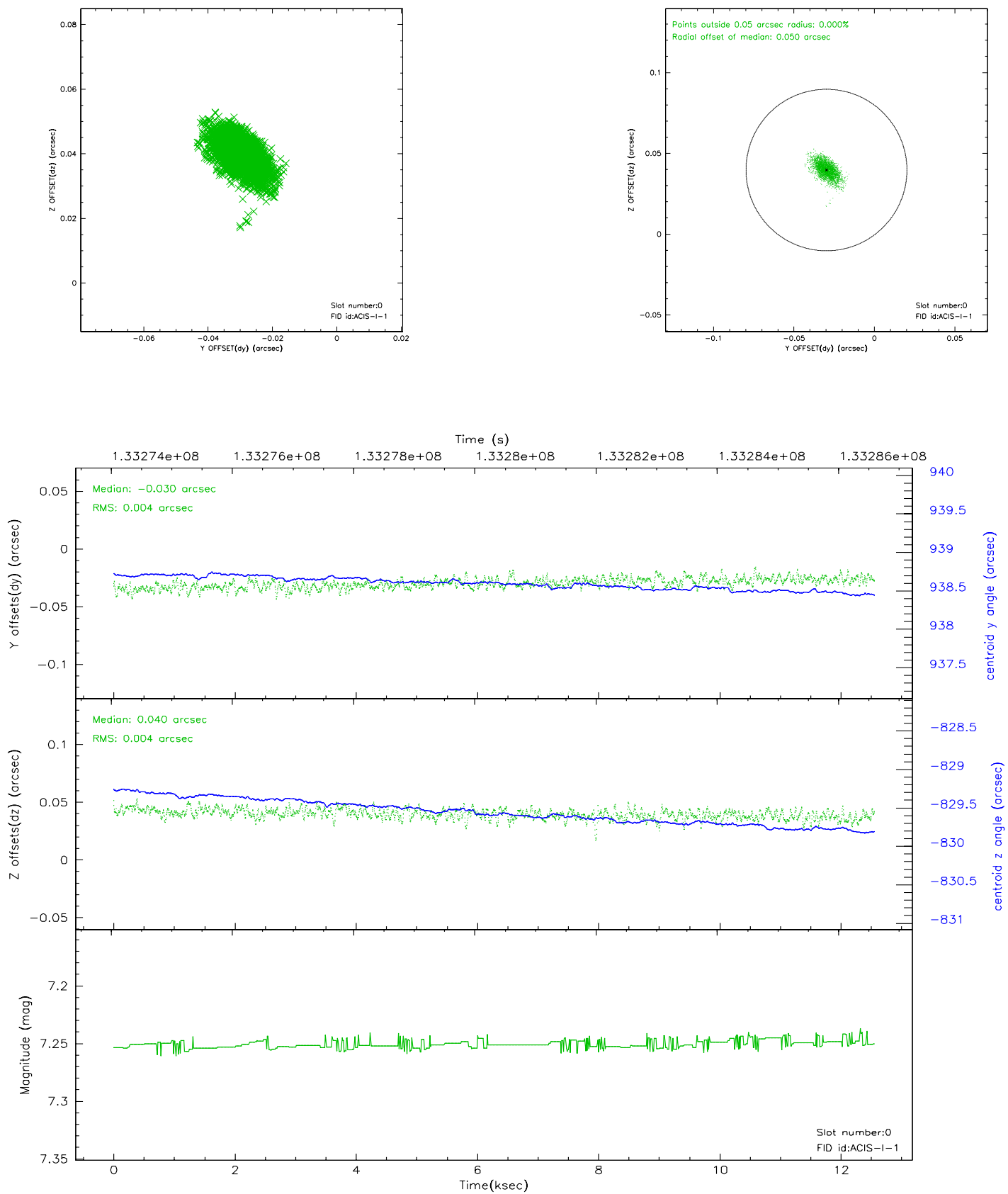


## 2.4.5 Slot 7

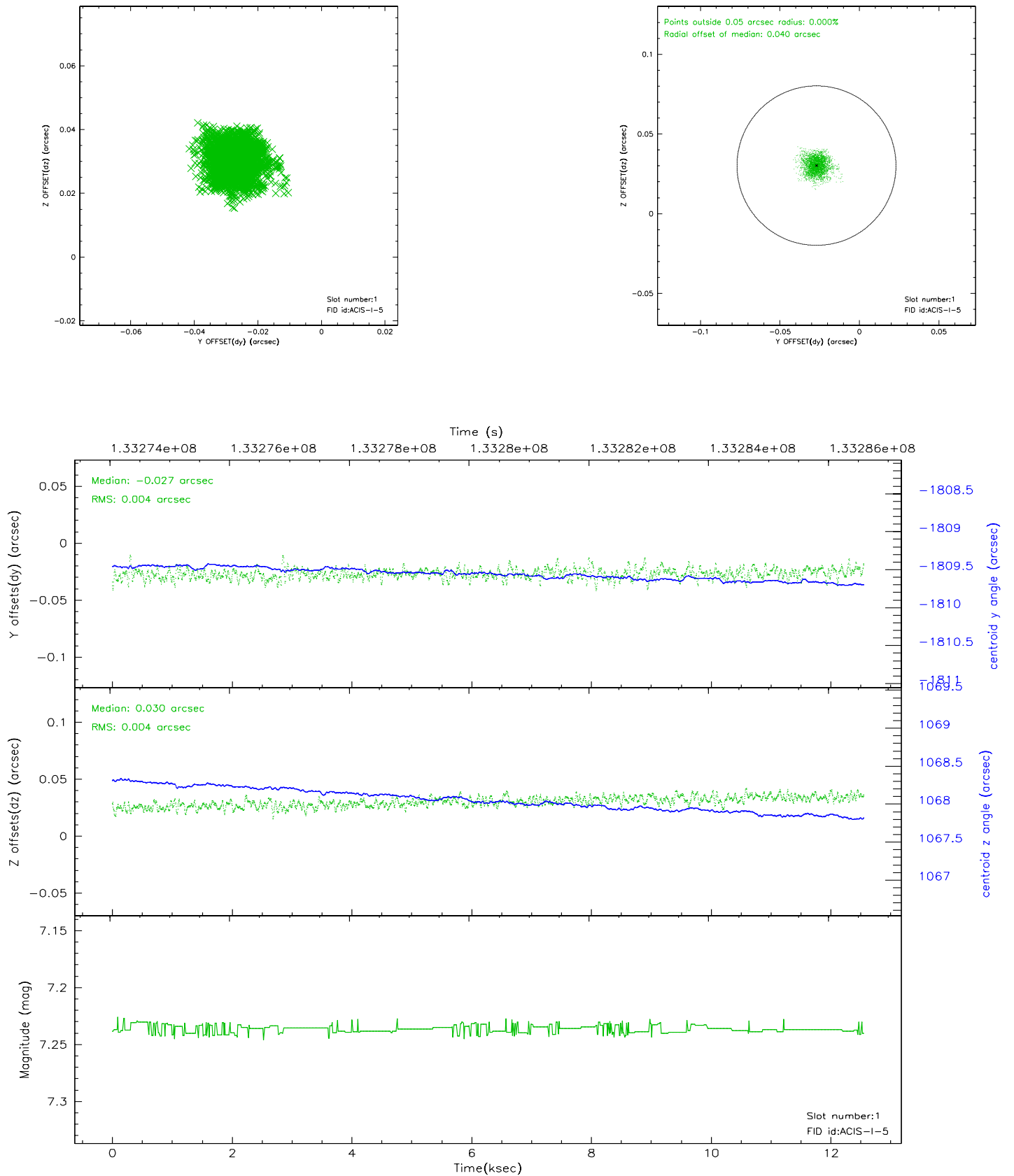


## 2.5 FID Slots

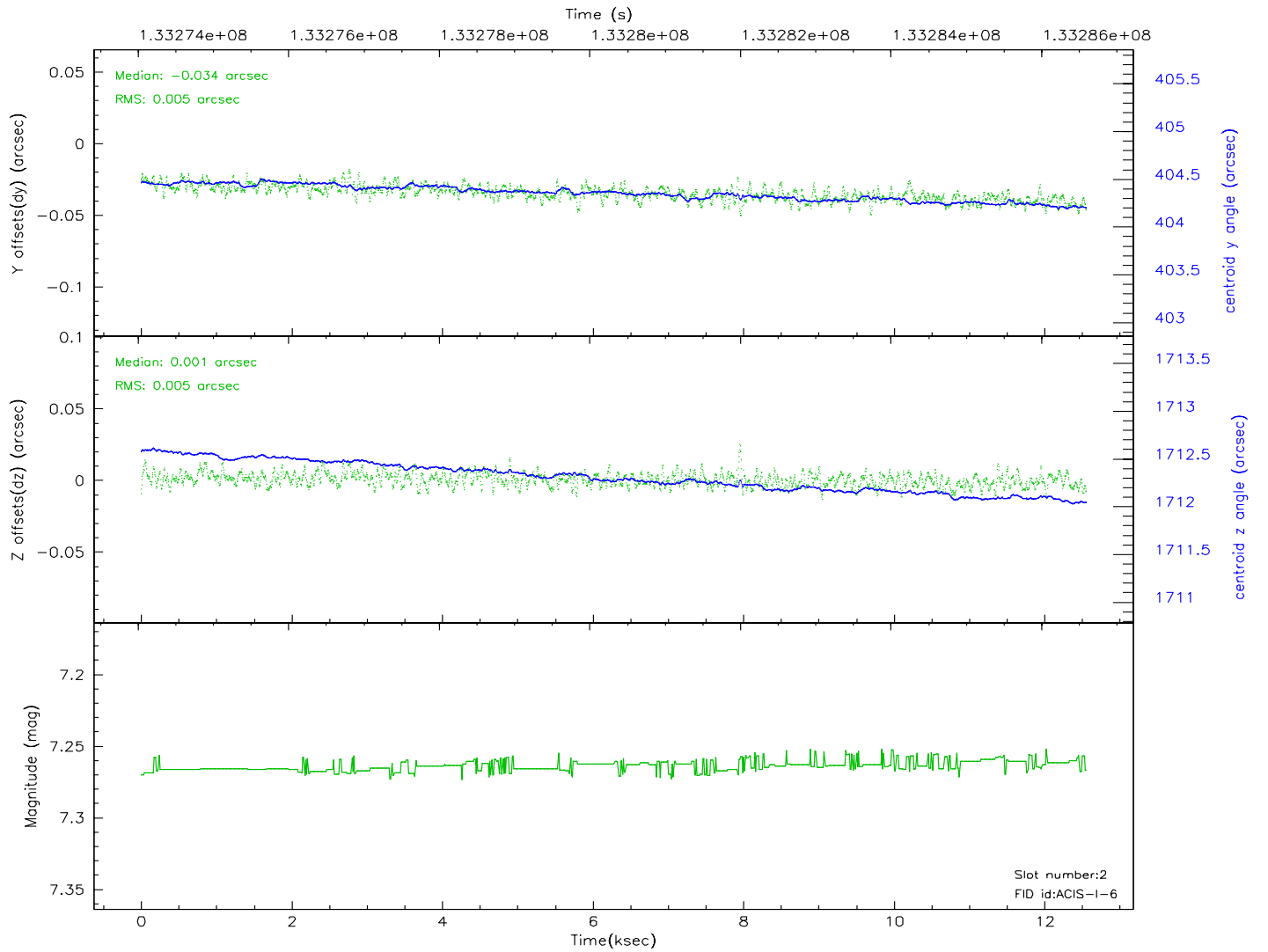
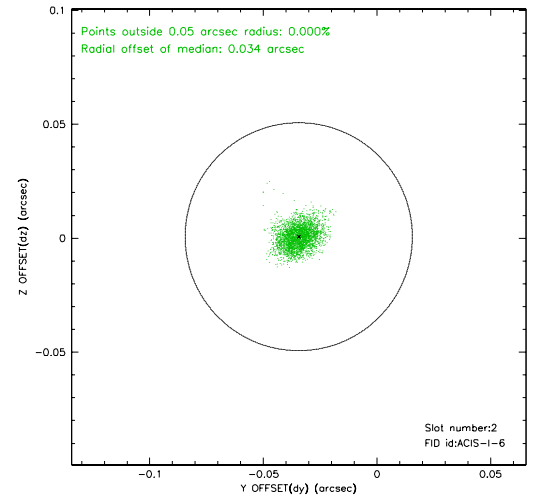
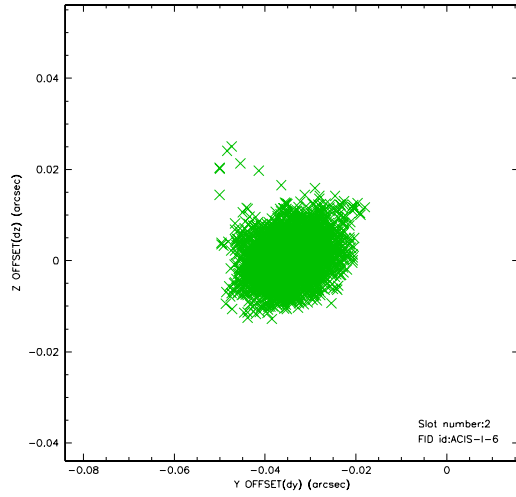
### 2.5.1 Slot 0



## 2.5.2 Slot 1

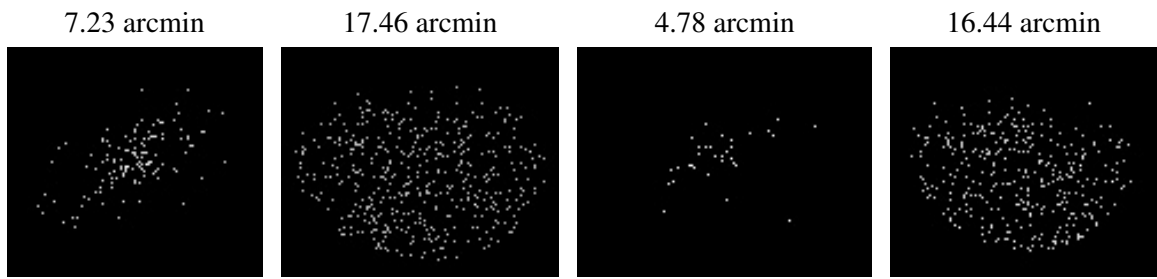


### 2.5.3 Slot 2





### 3 Point Sources



## A Summary

### A.1 Status

V&V Scientist	Jen Lauer
V&V Date (YYYY-MM-DD)	2006.09.08
V&V Edition	1
V&V Disposition and Status	OK
V&V Charge Time	12.015

### A.2 Comments

Window constraint met.